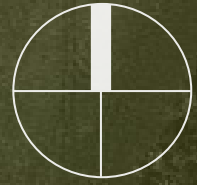




A Wetlands  
Research Center

Erin Saarela  
Fall 2013 Studio  
Arch 7721  
Mark Barnhouse

# Site Plan



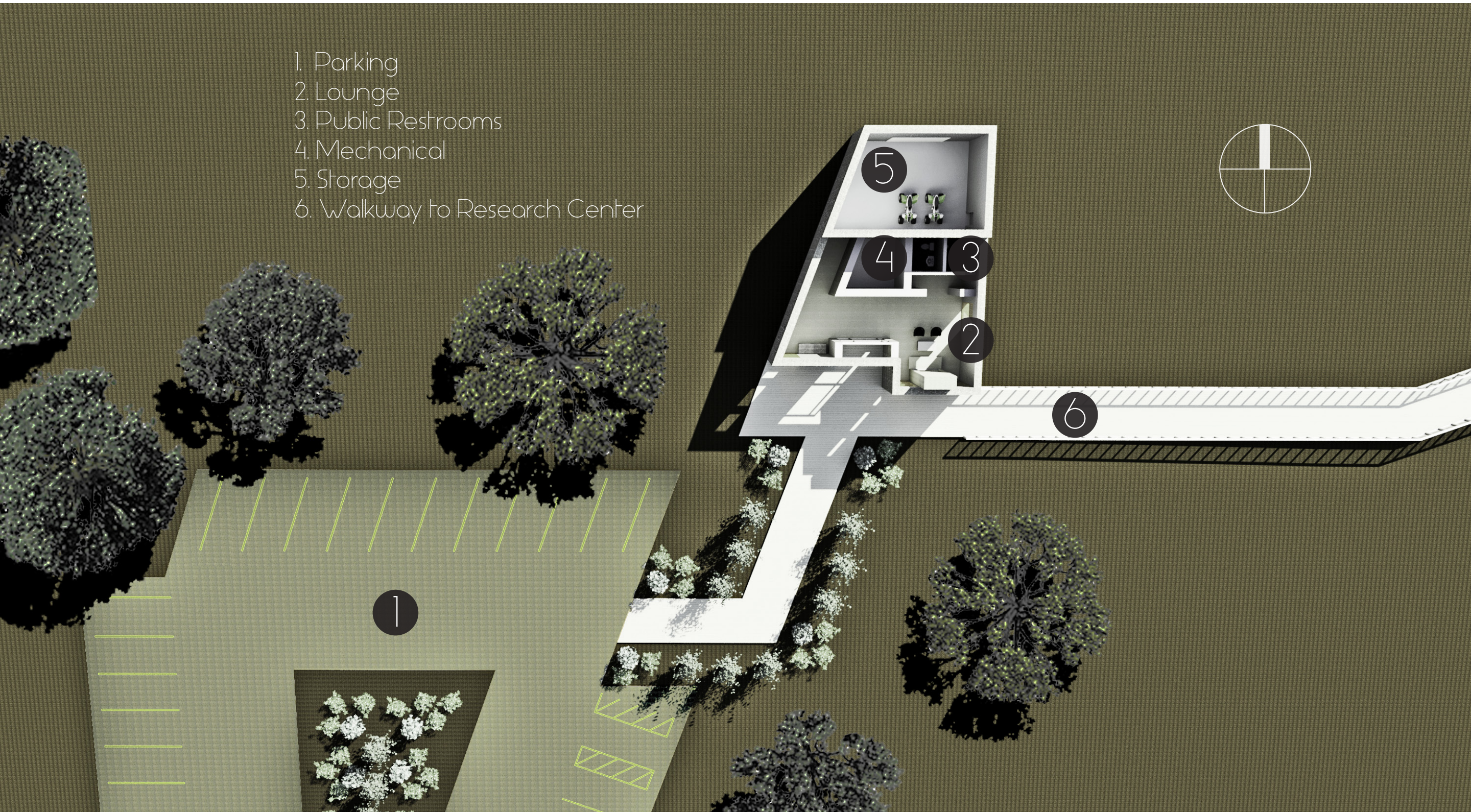
1. Parking
2. Entrance Pavilion
3. Walkway to Research Center
4. Research Center
5. Pond A
6. Pond B
7. Natural Wetland





# Entrance Pavilion Plan

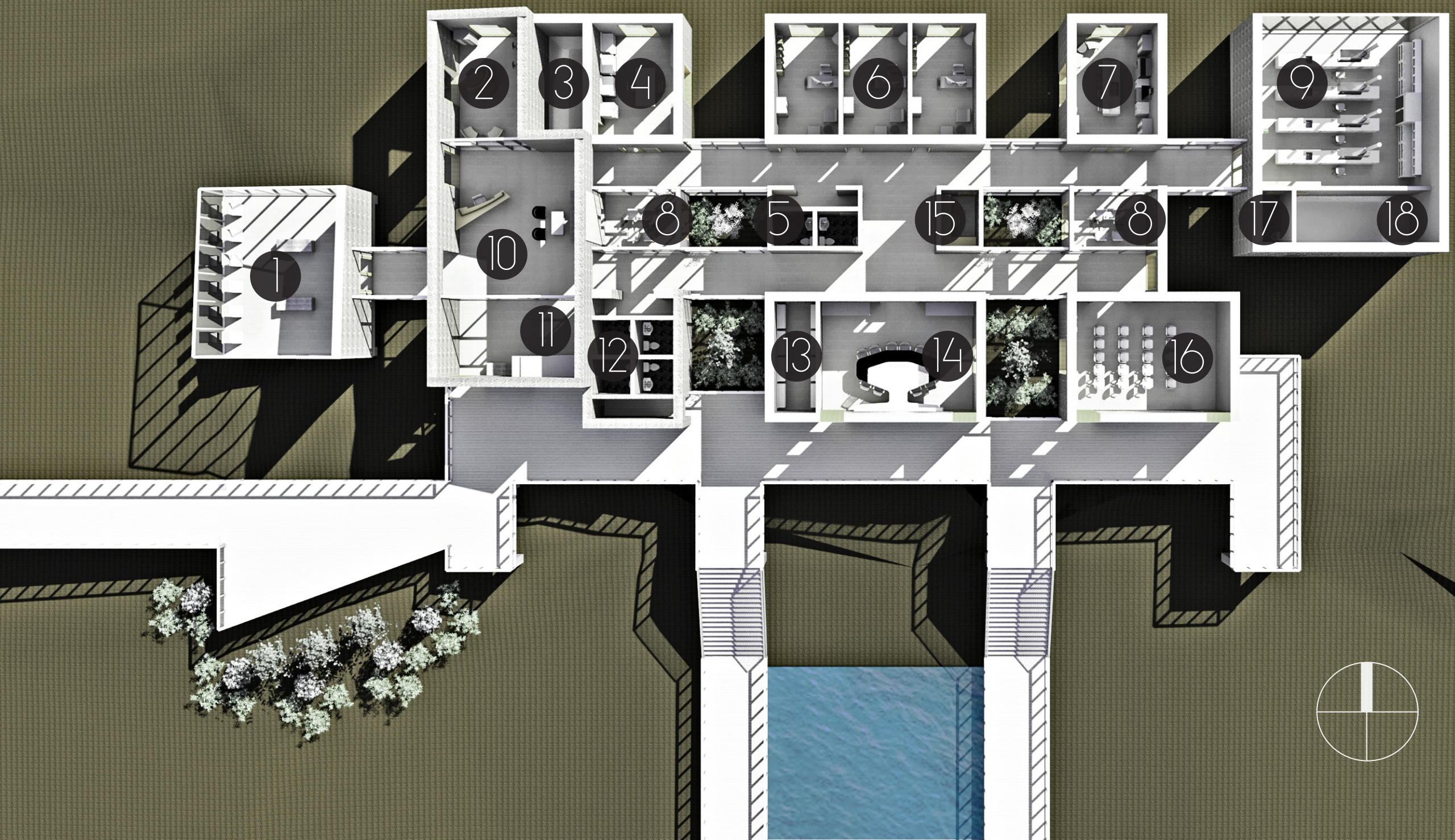
1. Parking
2. Lounge
3. Public Restrooms
4. Mechanical
5. Storage
6. Walkway to Research Center



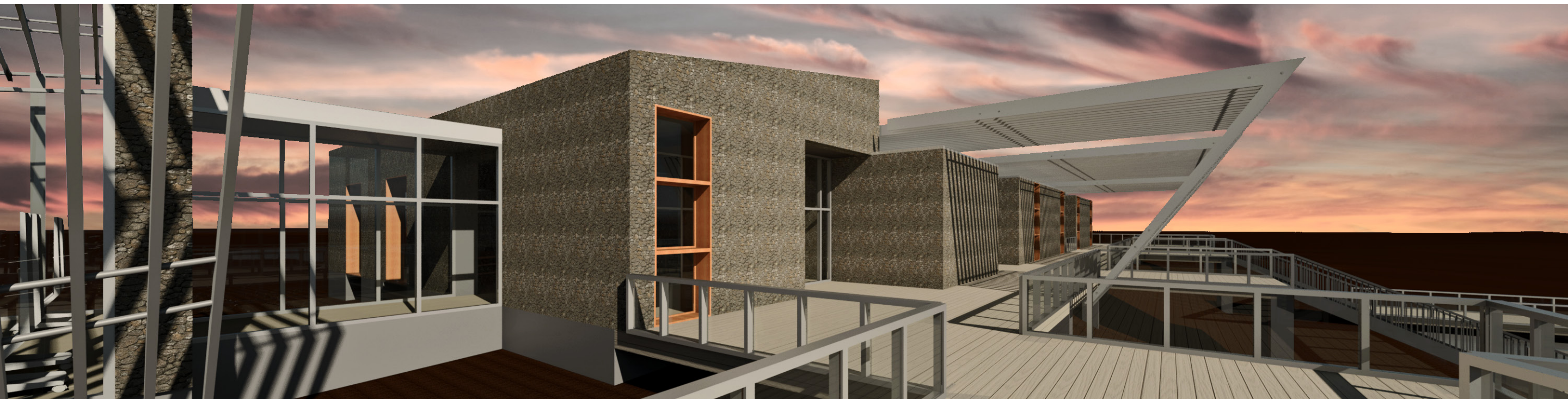


# Research Center Plan

1. Gallery
2. Director's Office
3. Mechanical
4. Mail Room
5. Office Restrooms
6. Researcher's Offices
7. Lounge
8. Small Conference Rooms
9. Laboratory
10. Reception
11. Entrance Vestibule
12. Public Restrooms
13. Storage
14. Large Conference Room
15. Computer Server Room
16. Presentation Room
17. Laboratory Restroom
18. Mechanical







Entrance



Northwest Corner



# Laboratory

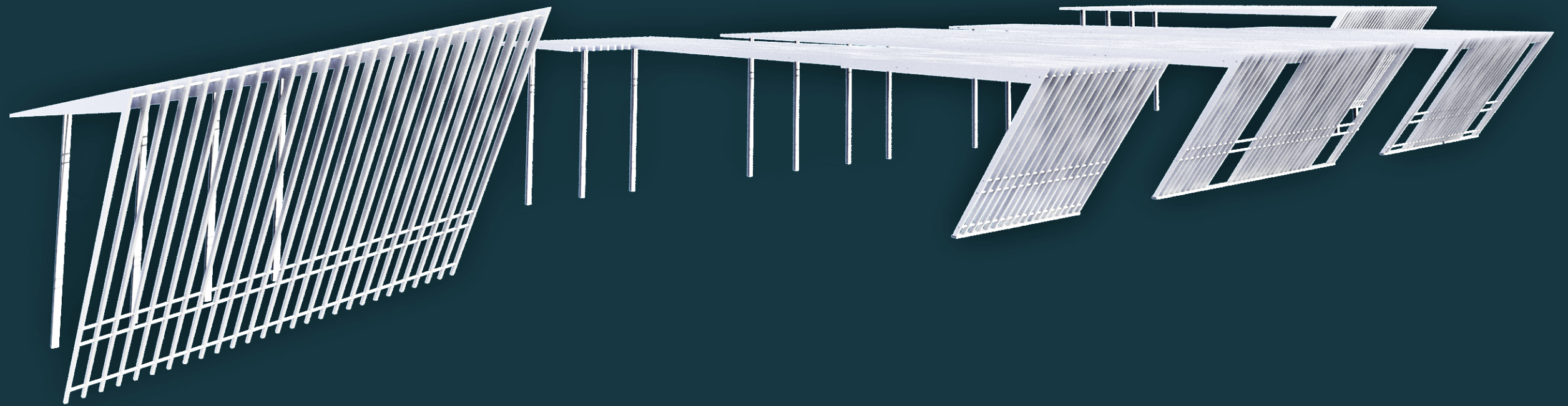




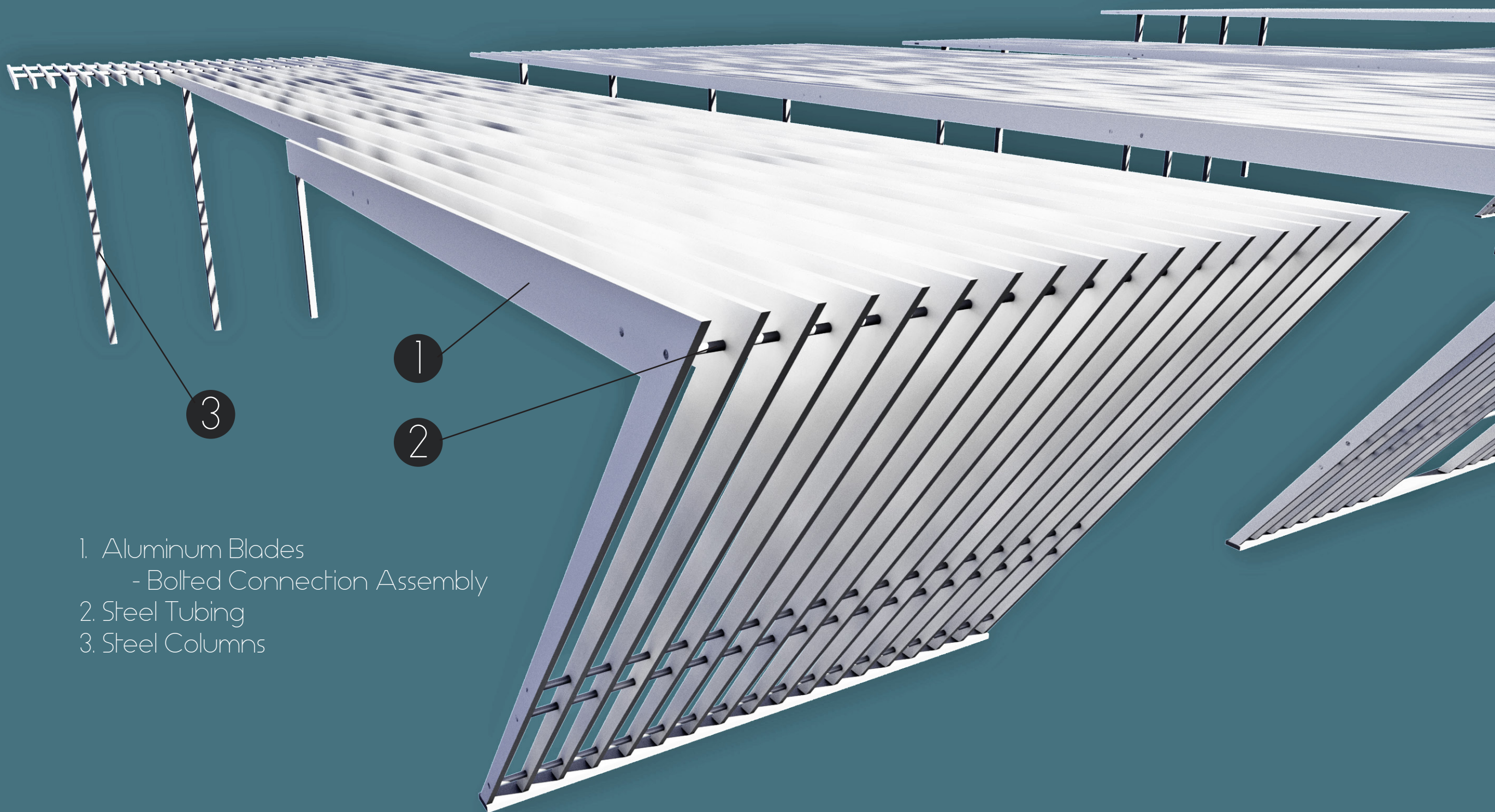
# Conference Room







# Sunscreen Structure Detail

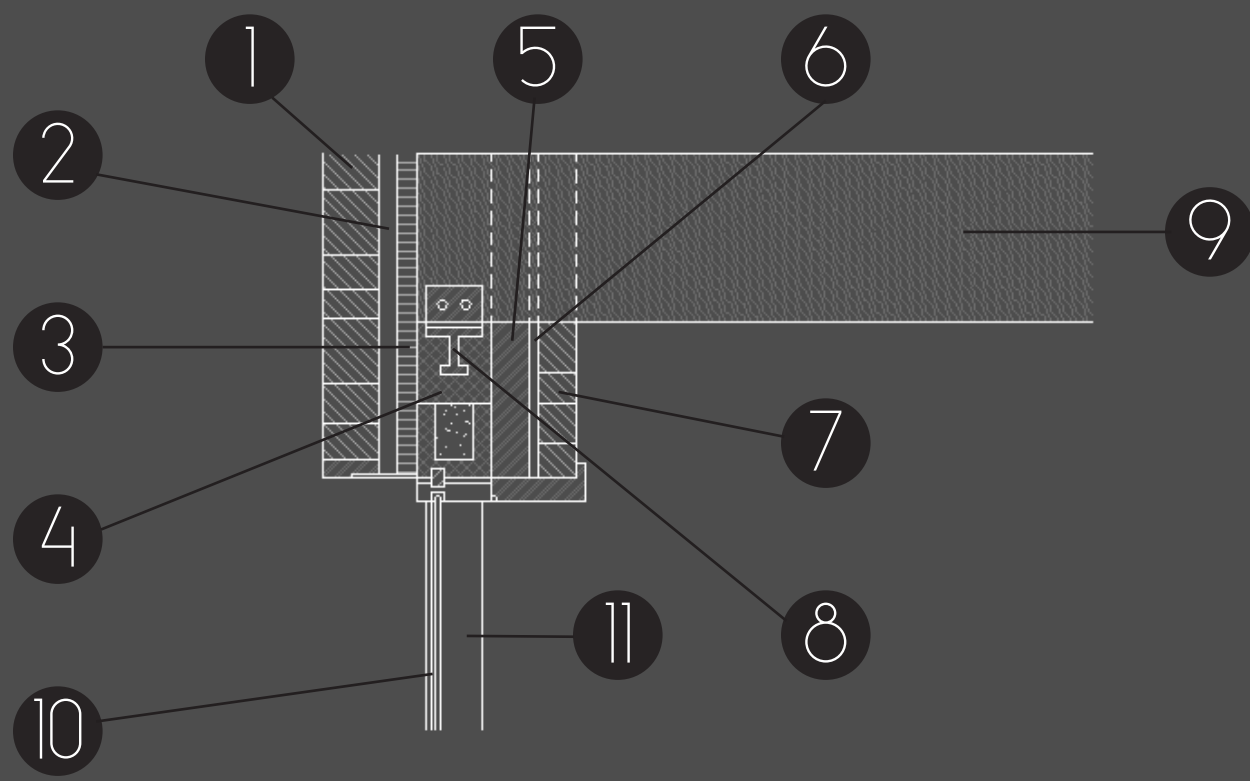


1. Aluminum Blades  
- Bolted Connection Assembly
2. Steel Tubing
3. Steel Columns

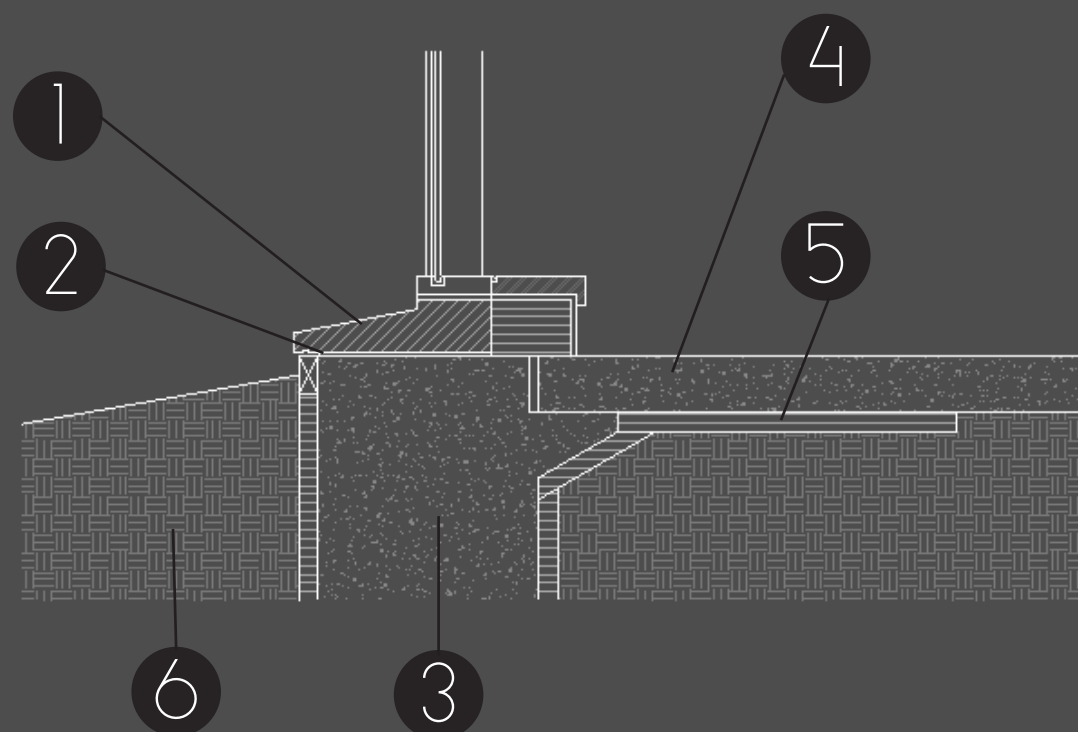


# Stone Bearing Wall Detail

1. 6" Stone
2. 2" Air Space
3. 2" Rigid Insulation
4. 8" Reinforced CMU
5. 4" Steel Studs
6. 1" Clearnace
7. 4" Stone Veneer
8. Steel Plate
9. 18" Glue Laminated Beam
10. 1" I.C. Unit
11. 6" Mullion



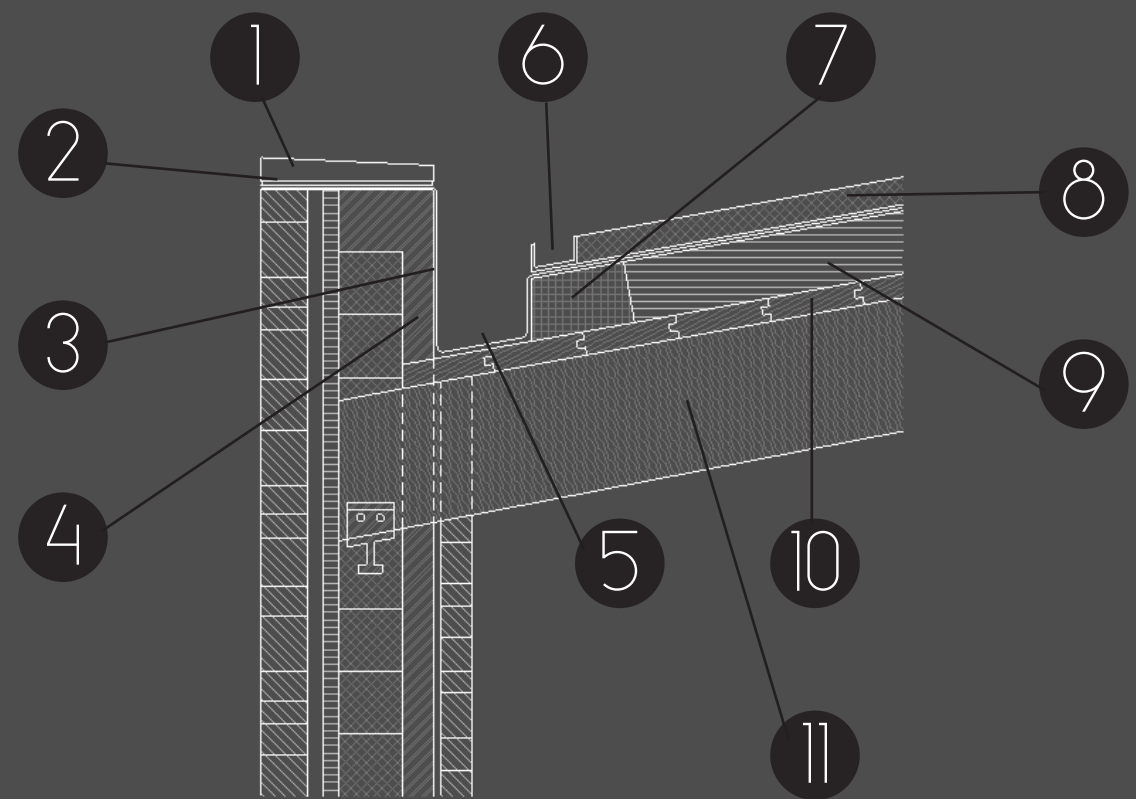
1. 6" Stone Sill
2. 1/2" Mortar Joint
3. 3' 0" Stem Wall
4. 6" Concrete Slab
5. 2" Rigid Insulation
6. Earth



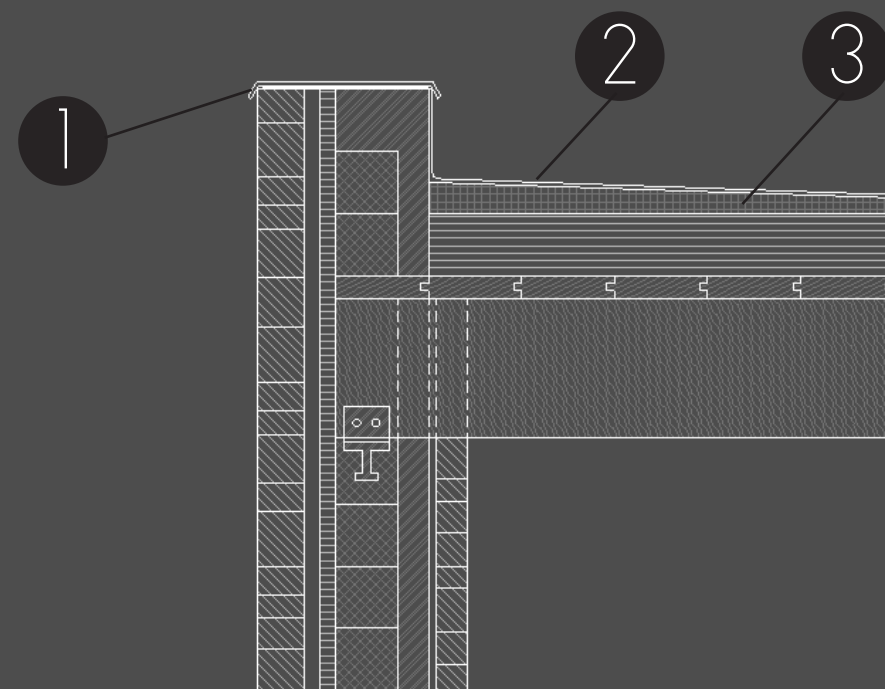


# Parapet Details

1. 3" Stone Cap
2. Flashing
3. EPDM Roof Membrane
4. Soy Based Foam Insulation
5. 1' 0" Gutter
6. 6" Gravel
7. Recycled Plastic Curb
8. 3 1/2" Growing Medium
9. 8" Rigid Insulation
10. 3" T&G Decking
11. 18" Glue Laminated Beam



1. 2" Aluminum Cap Flashing
2. EPDM Roof Membrane
3. Sloped Insulation





# Sectional Perspectives

