



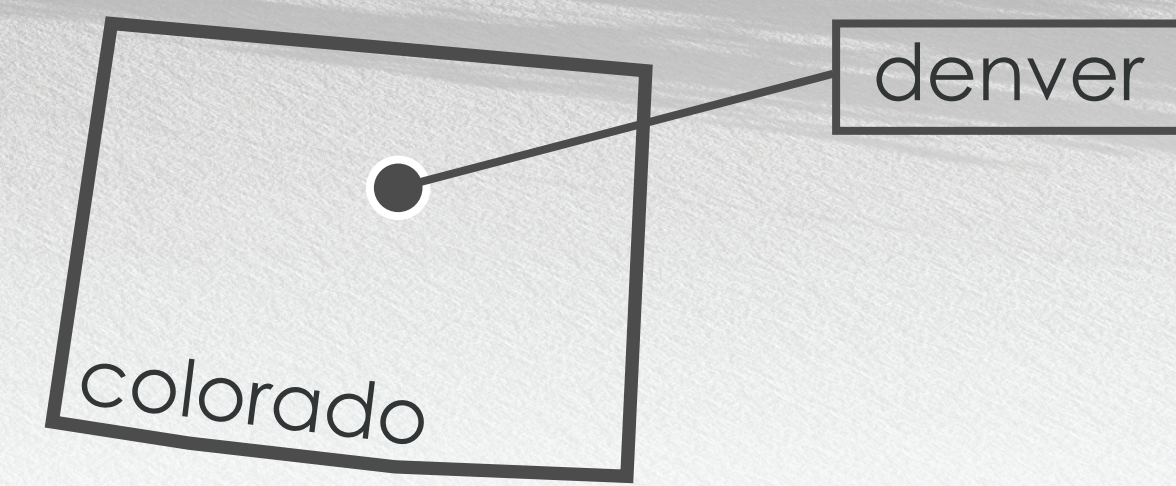
An architectural rendering of an elevated park in an urban space. The scene shows a walkway with a wooden railing and a large, dark, angular canopy structure supported by thin poles. In the background, a city skyline with various skyscrapers is visible. The text 'parks reinvented:' is written in a large, black, typewriter-style font at the top center. Below it, 'an elevated park in an urban space' and '.denver co' are written in a smaller, similar font. A white rectangular box on the right side contains the names of the primary and secondary advisors and the date and location of the project.

parks reinvented:

an elevated park in an urban space

.denver co

amanda ahrenholz
primary advisor | matthew kirkwood
secondary advisor | dominic fischer
spring 2014 | la 572



this oasis from the city is atop the Colorado Convention Center in downtown Denver, CO on 14th Street-right in the heart of the hustle and bustle. Because cities are becoming more and more dense, there is less space to save for urban green space and using space atop buildings is both a innovative and green solution. With framing the views of the beautiful Rocky Mountains, site users can experience the views of Denver while still remaining in an urban setting.

the Colorado Convention Center is located within walking distance of many hotels, restaurants, shopping and college campuses. The Convention Center holds more than 250 events annually, bringing both tourists and residents to the site.

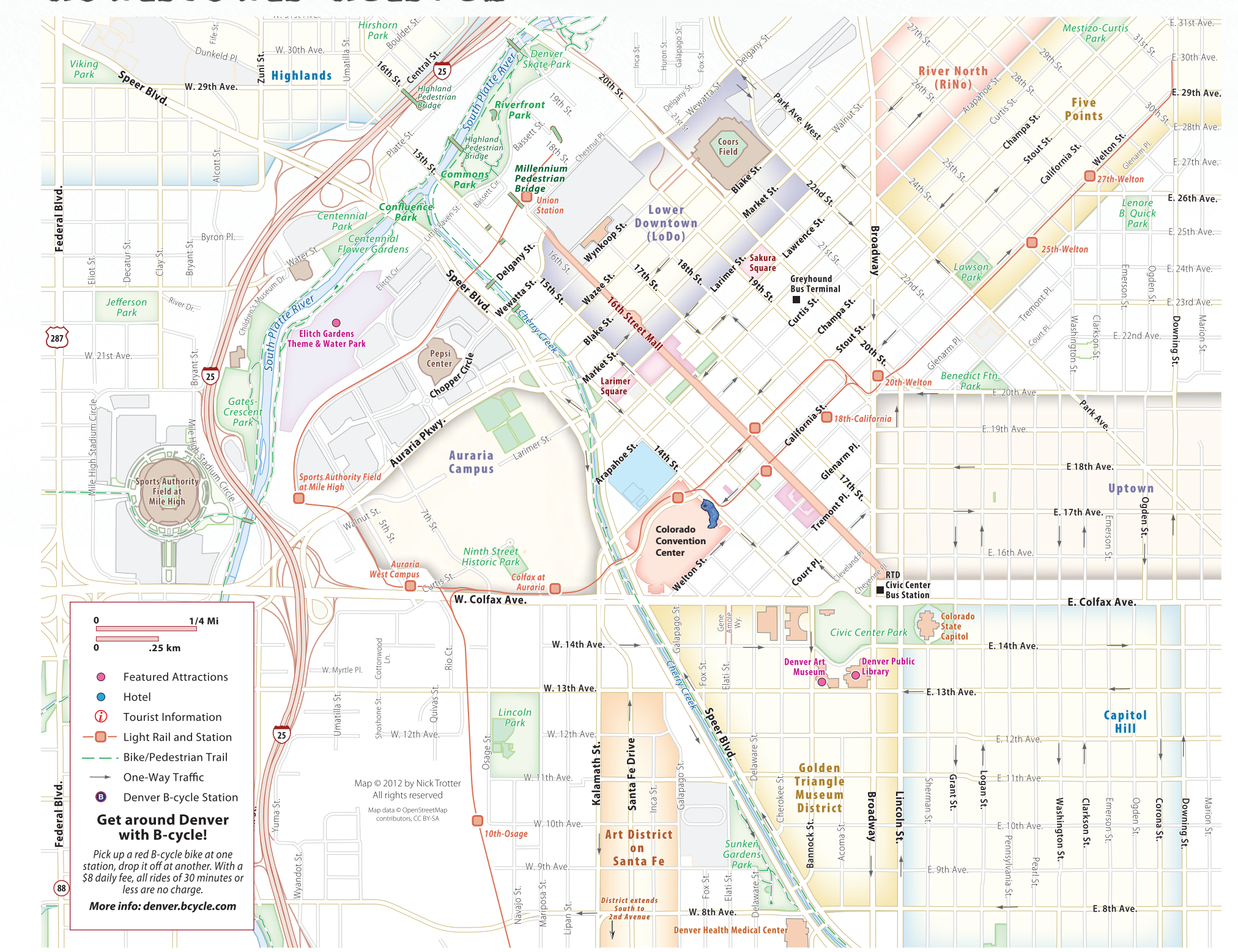
a strategy plan was created to plan the six acre site of the rooftop of the colorado convnetion center. to illustrate a design, a half acre site was then selected and detailed out.

the designed site is a place where visitors can go to escape the busy city life without leaving the city. the stage provides the opportunity to have large gatherings such as concerts, small parties and performances.

programs used to create this project:

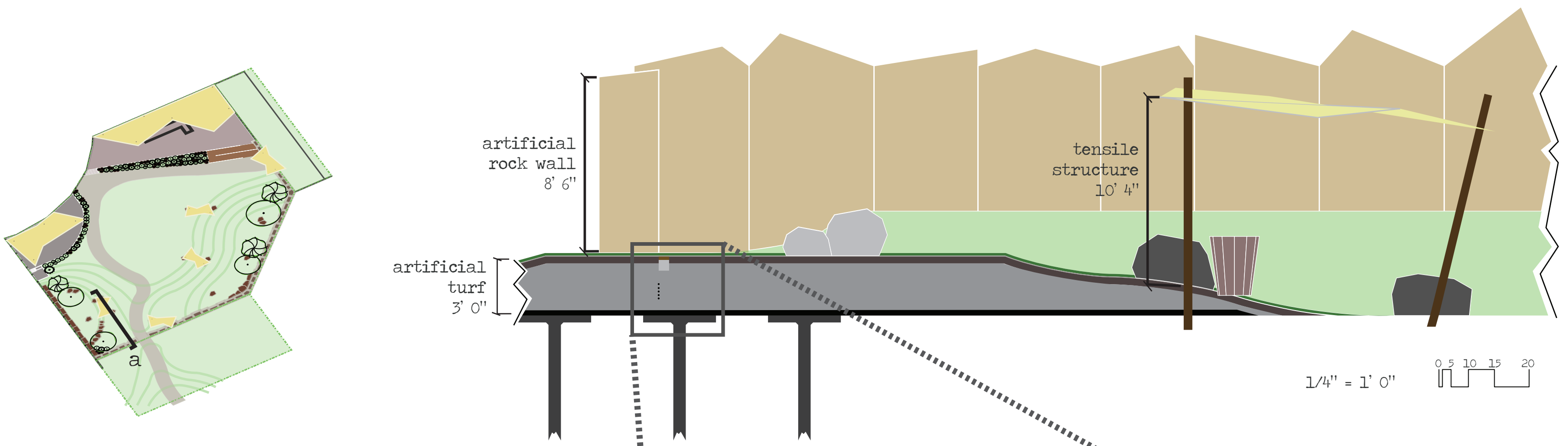


downtown denver

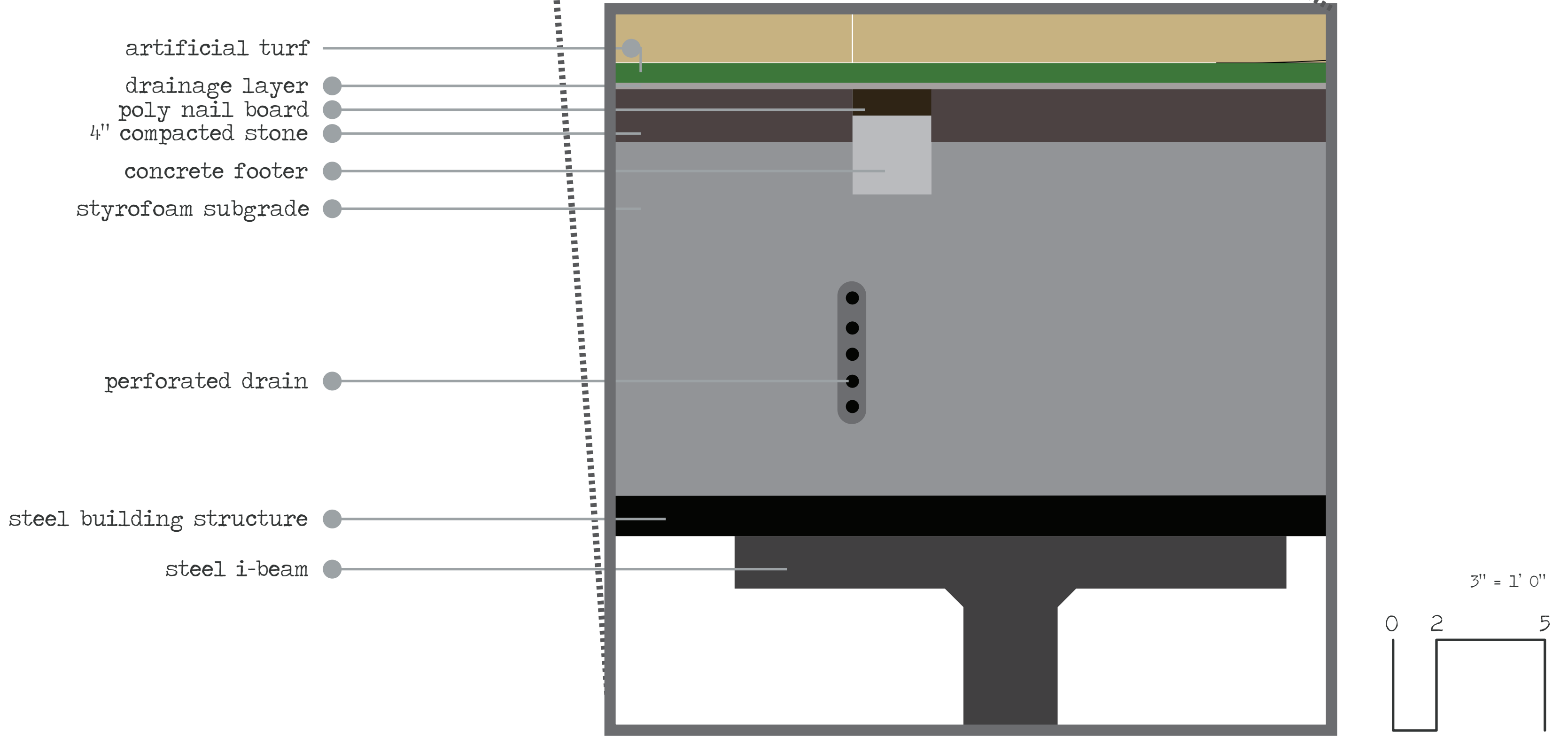


adapted by amanda ahrenholz

section



artificial turf detail

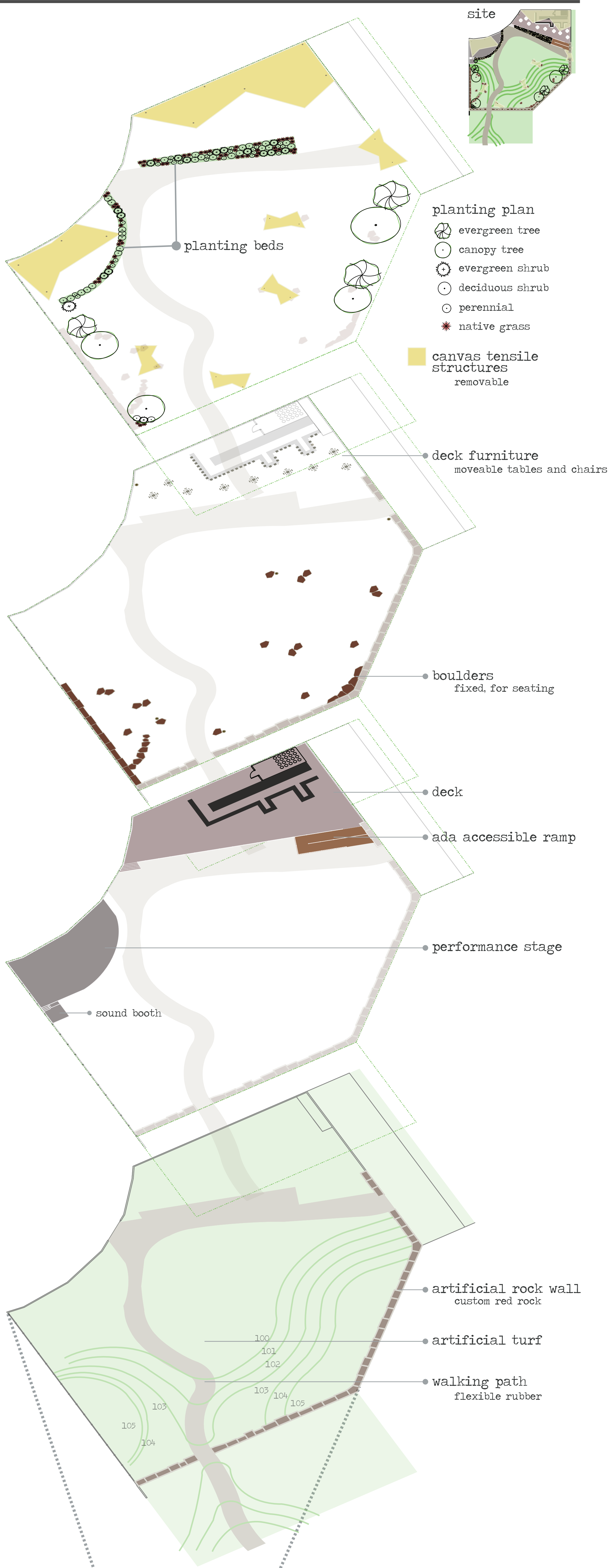


site master plan

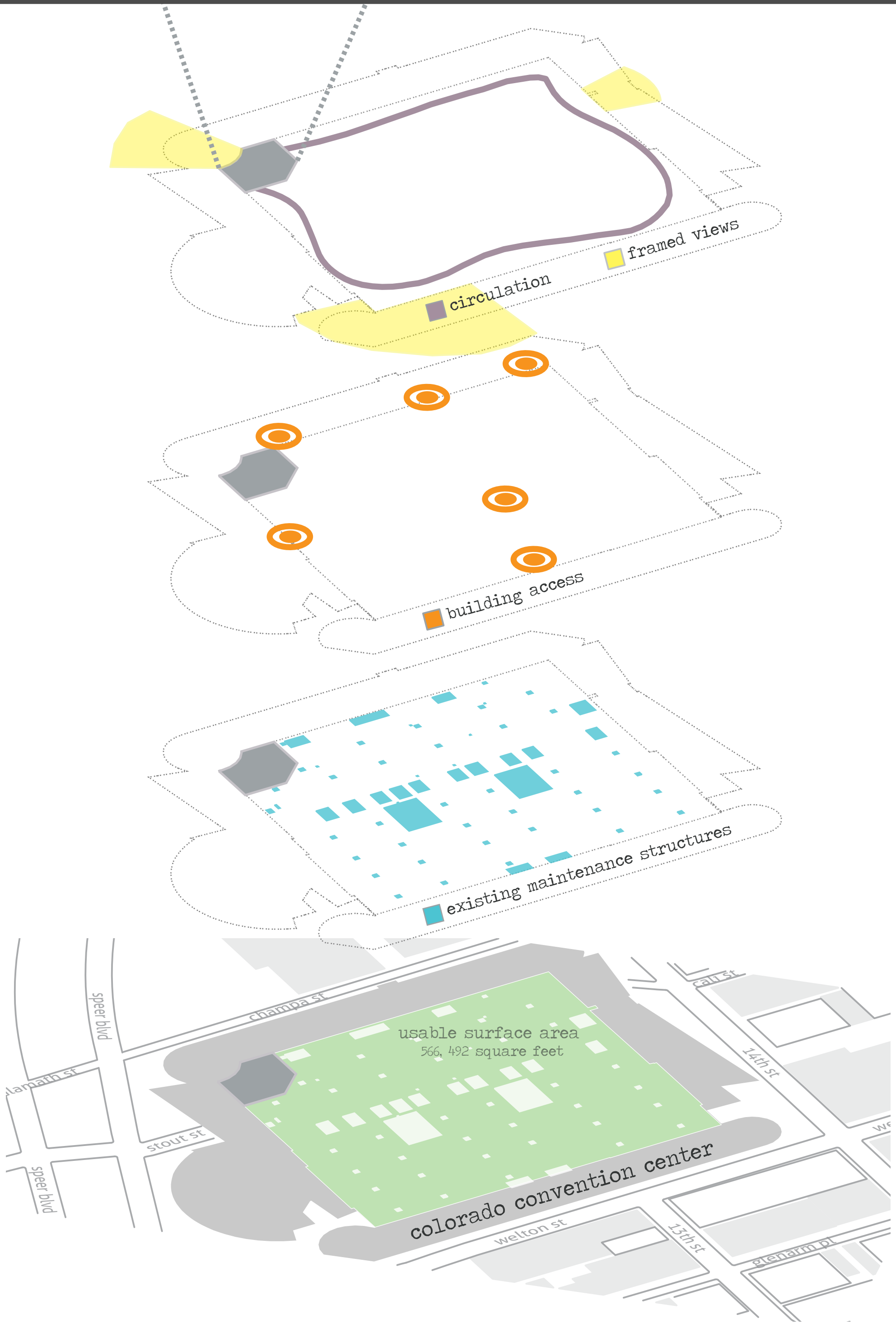
- ① artificial turf
- ② walkway
- ③ wooden deck
- ④ outdoor bar and cafe
- ⑤ tensile canopy
- ⑥ stage
- ⑦ boulder seating
- ⑧ ada accesible ramp
- ⑨ south entrance
- ⑩ north entrance
- ⑪ planting beds

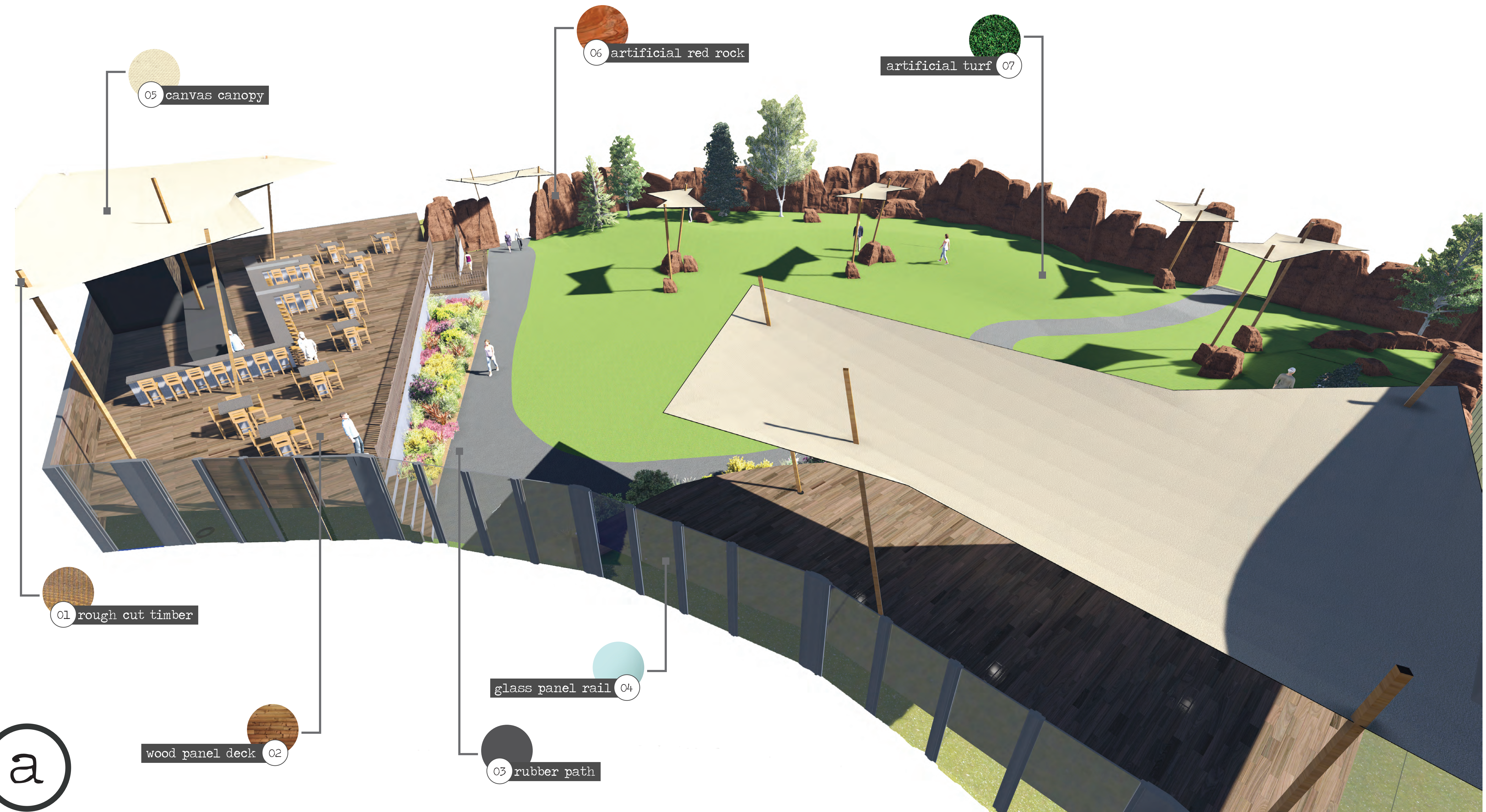


exploded master plan

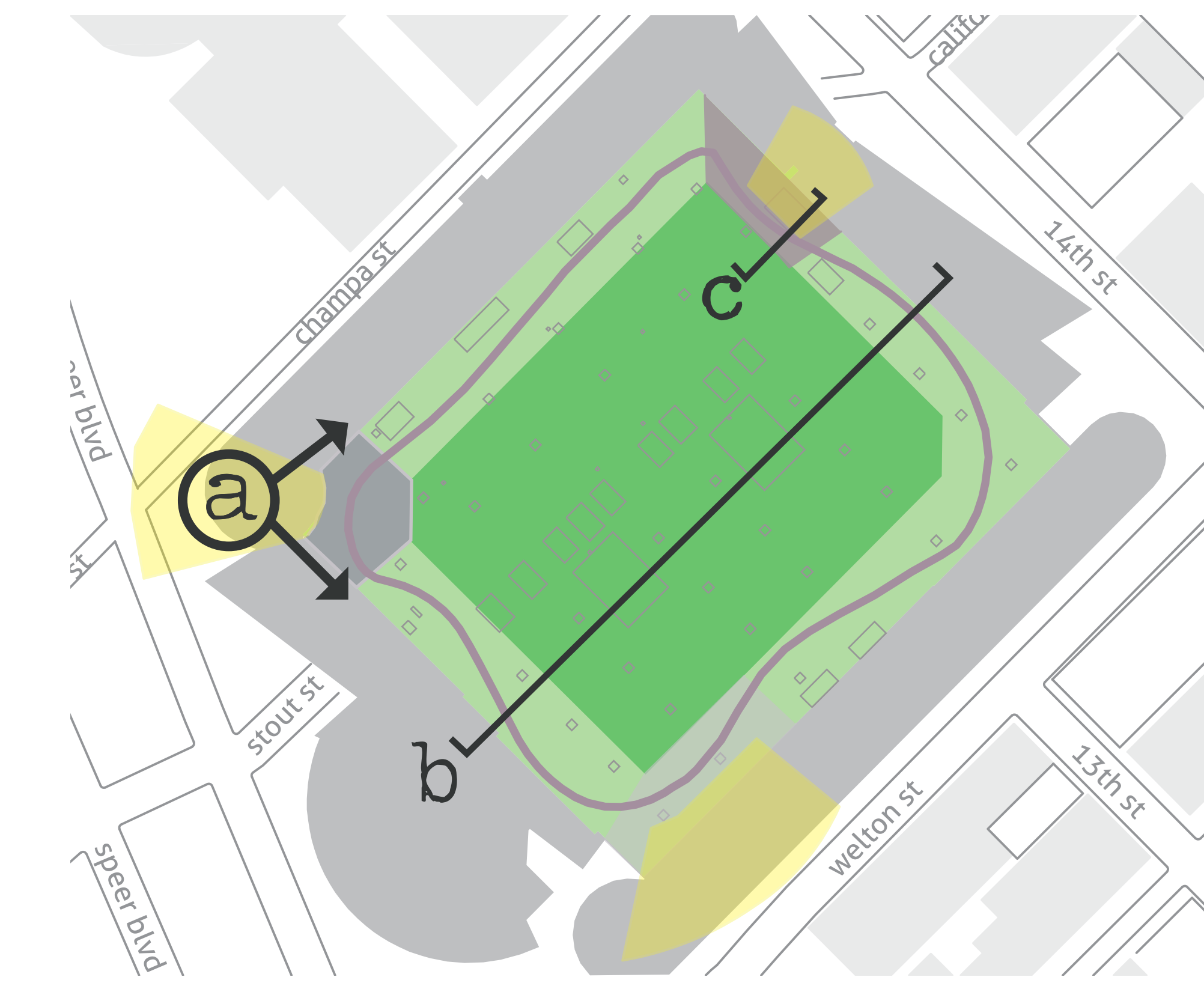


overall site analysis





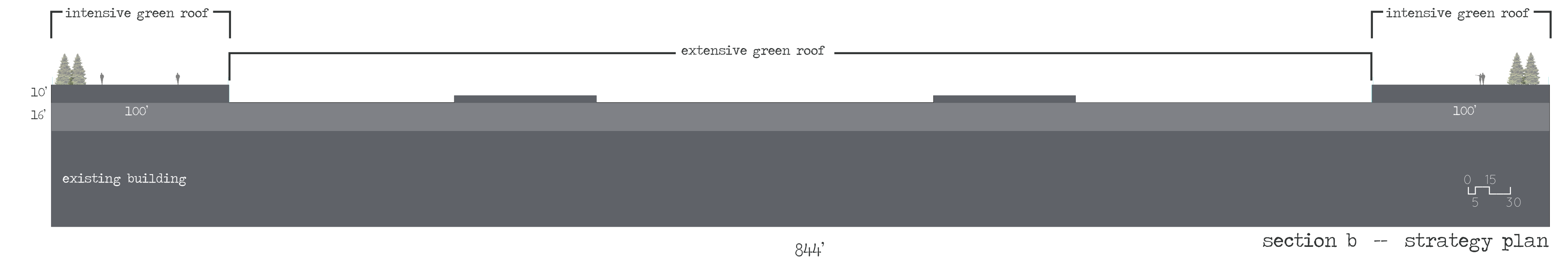
- city confluence
immersed views
- outsider influence
intensified inspirations
- the gridwork
new connections
- intensive rooftop
300 per
- extensive rooftop
140 per



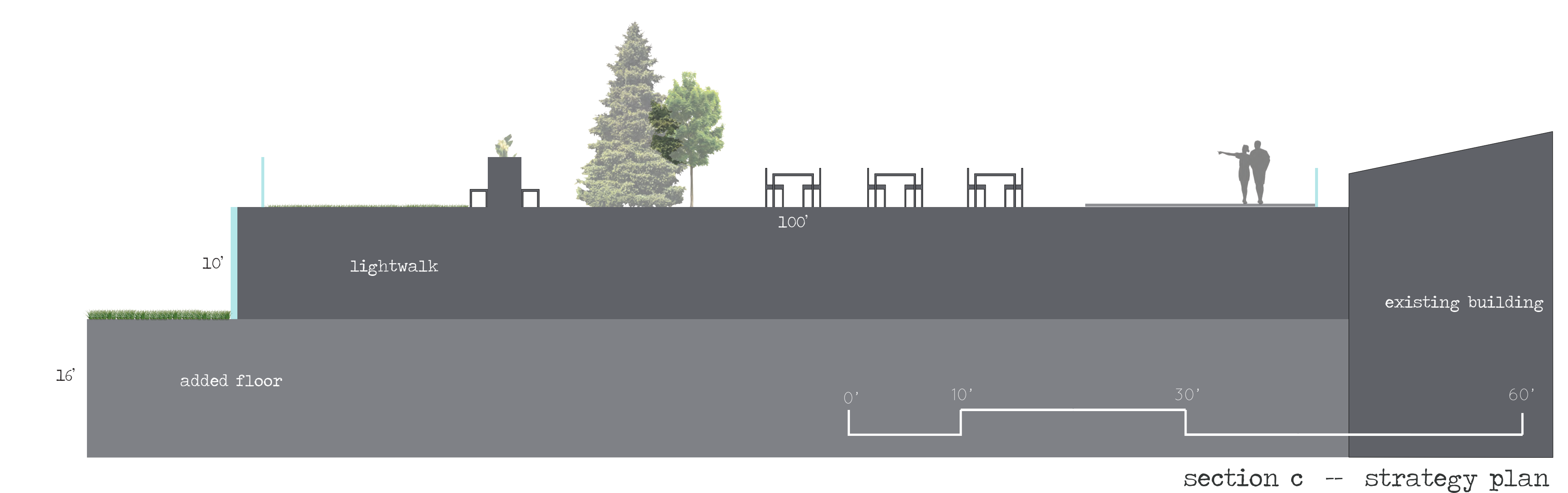
the strategy plan for the reinvented park frames views in three areas to the city and mountains and separates it into two different types of green roofs -- extensive and intensive.

intensive green roofs require more maintenance and have a wide variety of plantings, grasses and trees.

extensive green roofs are more low maintenance and have grasses with small root systems



the existing building was not strong enough to hold the load capacity of this project so an additional two floors were added. the first addition is 16 feet tall, with the potential for adding more meeting space to the convention center. the second added floor is a lightwalk which is a large square hallway along the perimeter of the building. adding the two floors will allow the building to sustain the load capacity of the project.



in the strategy plan, there are spaces for seating, a path that circulates through the whole site as well as five different access points. various plantings, based on the views are also featured in this strategy plan. outside views determine the theme of the immediate site.

a