

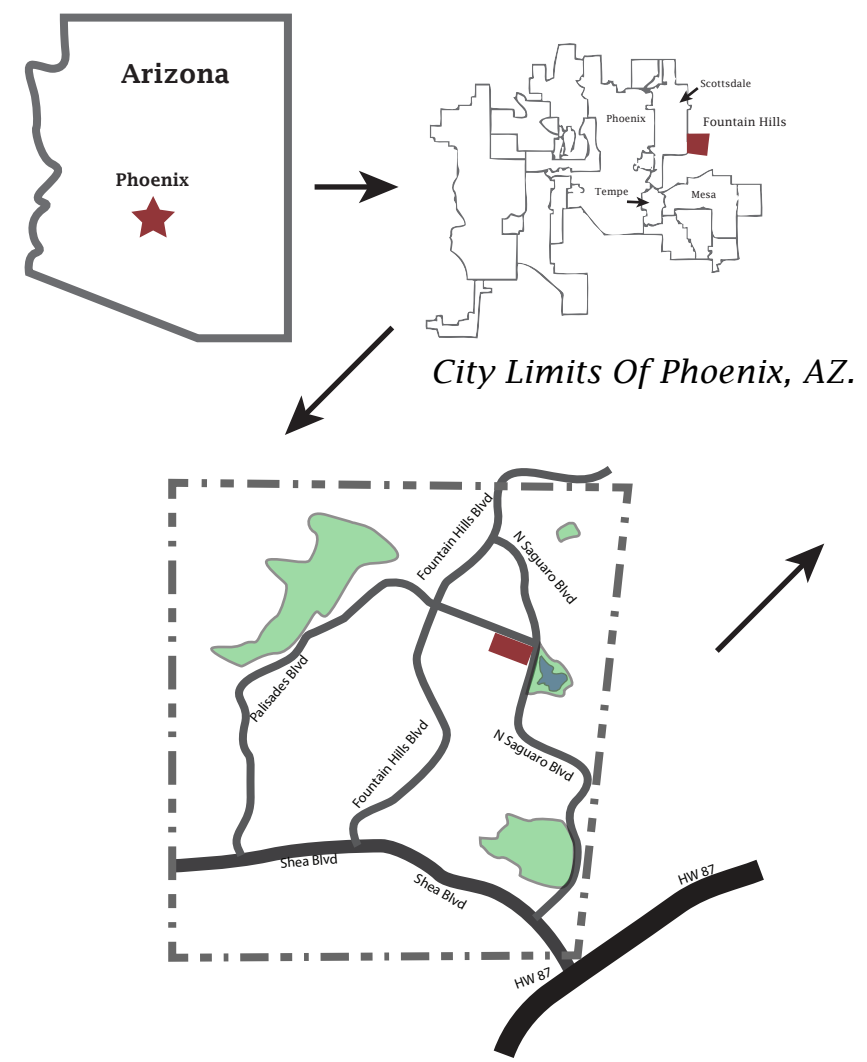
Fountain Plaza and Art Gardens

Urban Revitalization through Urban Agriculture and Art Park

Fountain Hills, Arizona



Context map of Fountain Hills, Arizona



Fountain Hills



Fountain Park

Study Site in Fountain Hills



General Informtion

- Population- 23,000
- Founded- December 15, 1970
- Landsize- 20.32 sq. mi.
- Altitude- 1,525 to 3,160 feet above sea level
(500 feet over Phoenix)
- Mountain Ranges surrounding- Scottsdale Mountains, McDowel Mountians, Supersitions Mountains
- Intresting Feature- Fountain Park Fountain runs for 15 minutes, every hour from 9 a.m. to 9 p.m.
- The fountian shoots an average of 330 ft. with a max height of 550 ft.

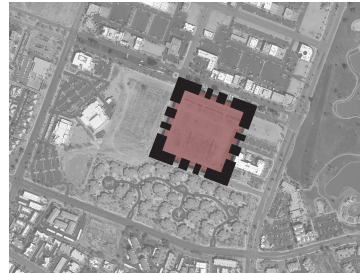


Fountain Plaza and Art Gardens

Urban Revitalization through Urban Agriculture and Art Park



Site Information



Site- 15 Acres

Land Type- Undeveloped Desert

Major Roads Surrounding- Ave of the Fountains,
and Saguaro Boulevard

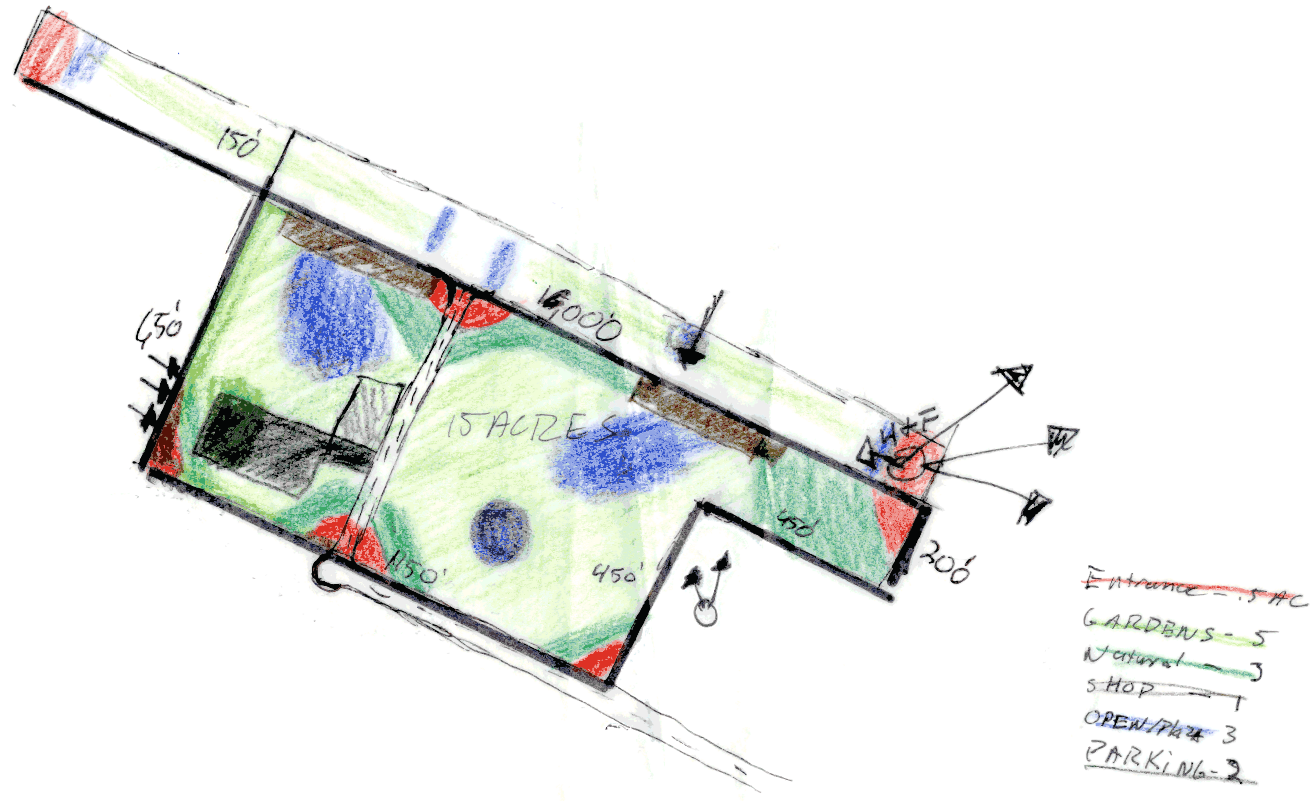
Plants- Volunteer Plants, No Formal Plantings on
the Site



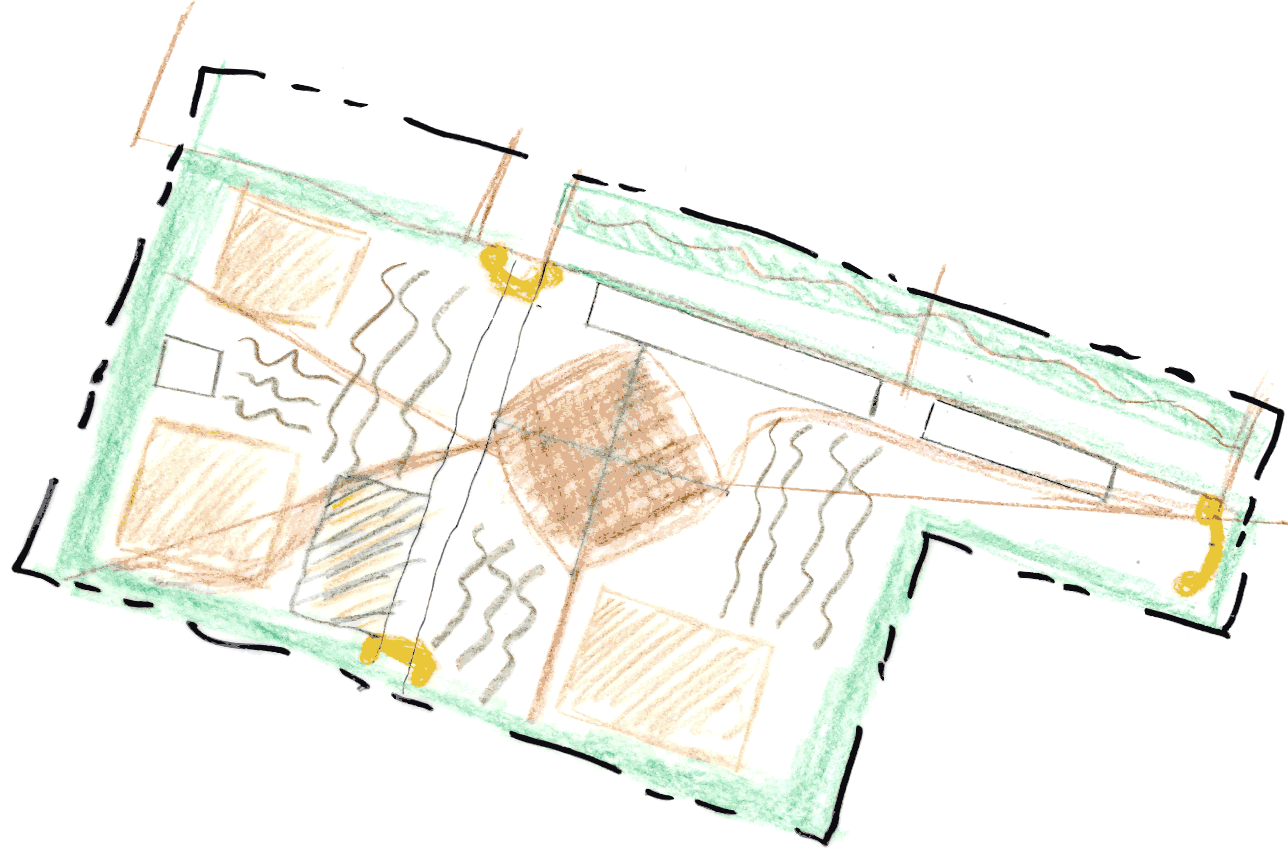
Fountain Plaza and Art Gardens

Urban Revitalization through Urban Agriculture and Art Park

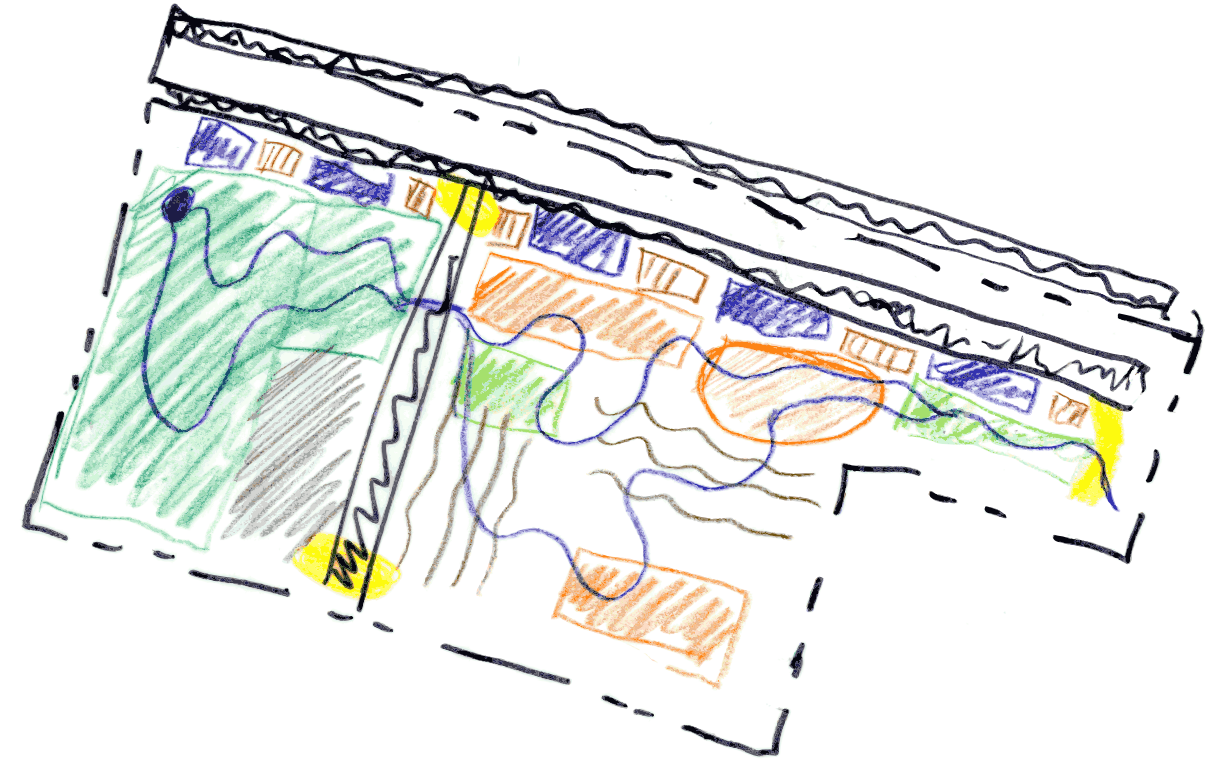
Concept Progression



Farm



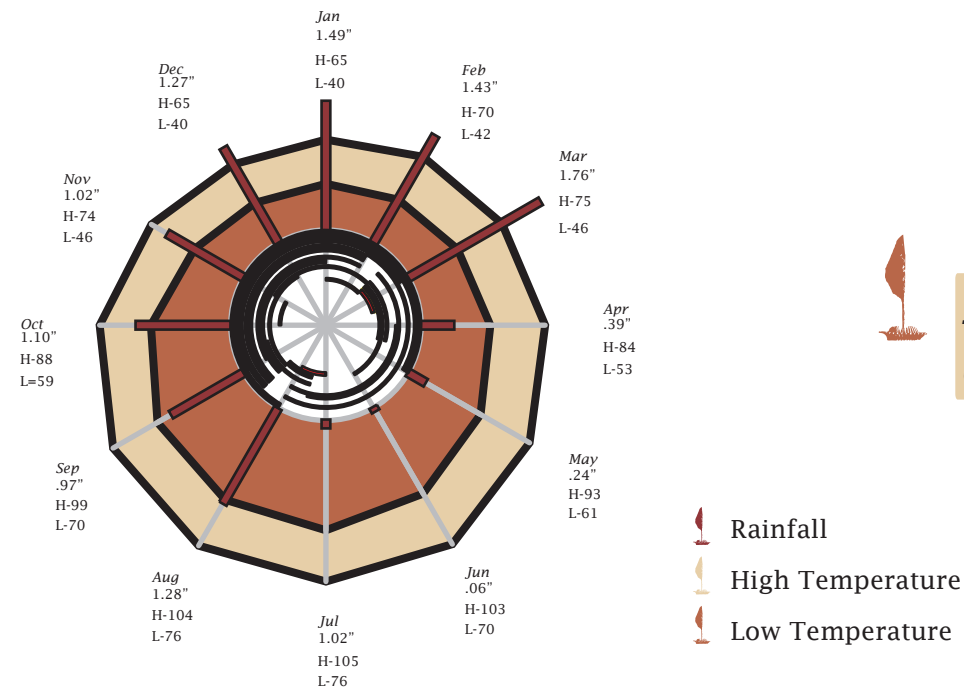
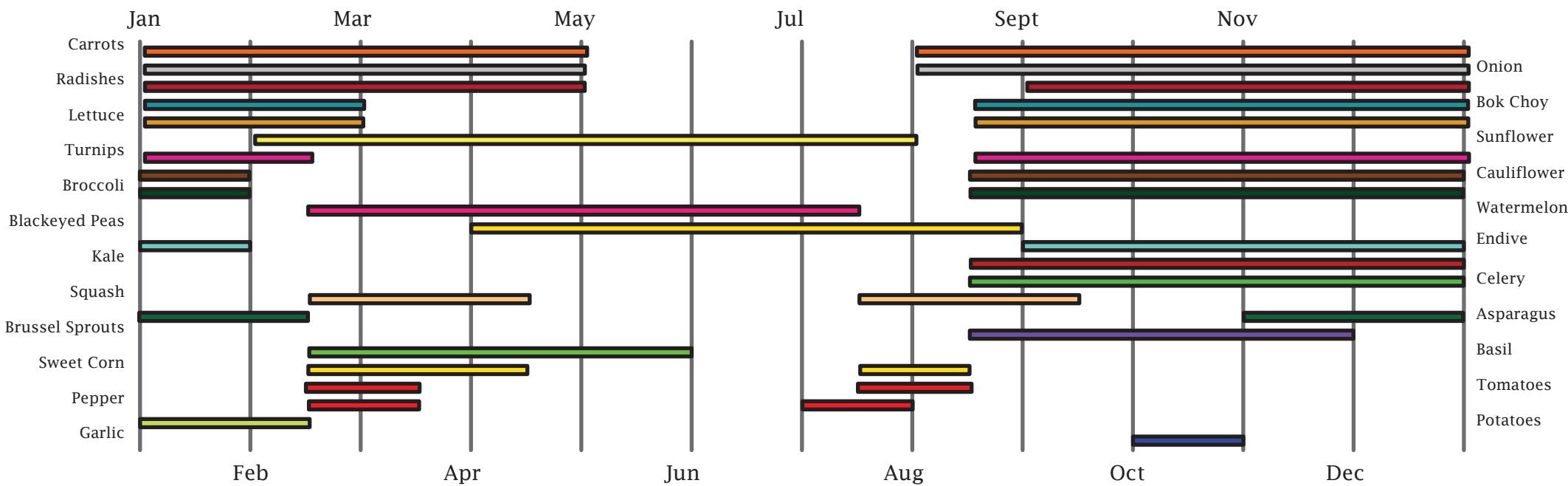
Plaza



River and Gardens

Fountain Plaza and Art Gardens

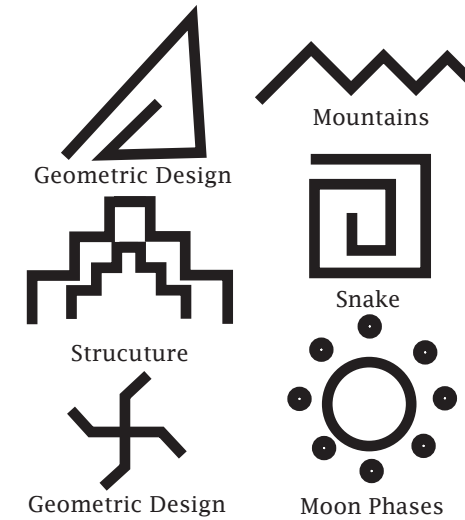
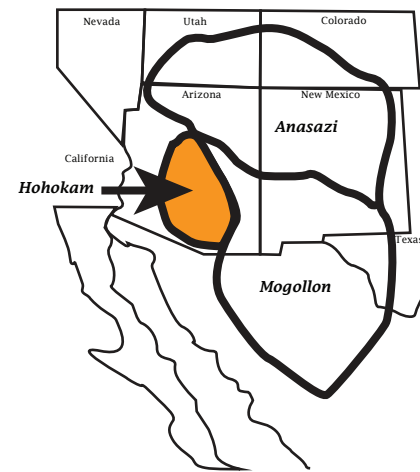
Urban Revitalization through Urban Agriculture and Art Park



Planting Schedule and Rainfall and Average Temperatures

- Rainfall
- High Temperature
- Low Temperature

Forms Derived from the Native Hohokam Culture



Rain Water Collection

From the research collected, the average production plant needs 1 to 2 inches of water per week. The average rainfall in Fountain Hills per month is 1 inch. It will take roughly 5 square feet of rain water collection for every square foot of plantings to allow enough water for the plant to survive.

By using the water runoff from the hardscapes and buildings, 82,600 sq ft of area was designed to collect water. The planter area amounts to 3,300 sq ft and the orchard area is 3,400 sq ft. There is 6,700 sq ft of planting area. Multiply that number by 5, and you get 33,500 sq ft of collection needed. The design can support and is able to collect extra water and store on site underground and use it at a later time.

82,600 sq ft of Rain Water Collection
 3,300 sq ft of Planters
 3,400 sq ft of tree line

5 sq ft of collection for every 1 sq ft of plantes

3,300 sq ft + 3,400 sq ft = 6,700 sq ft

6,700 sq ft x 5 = 33,500 sq ft

33,500 < 82,600

Production Plants

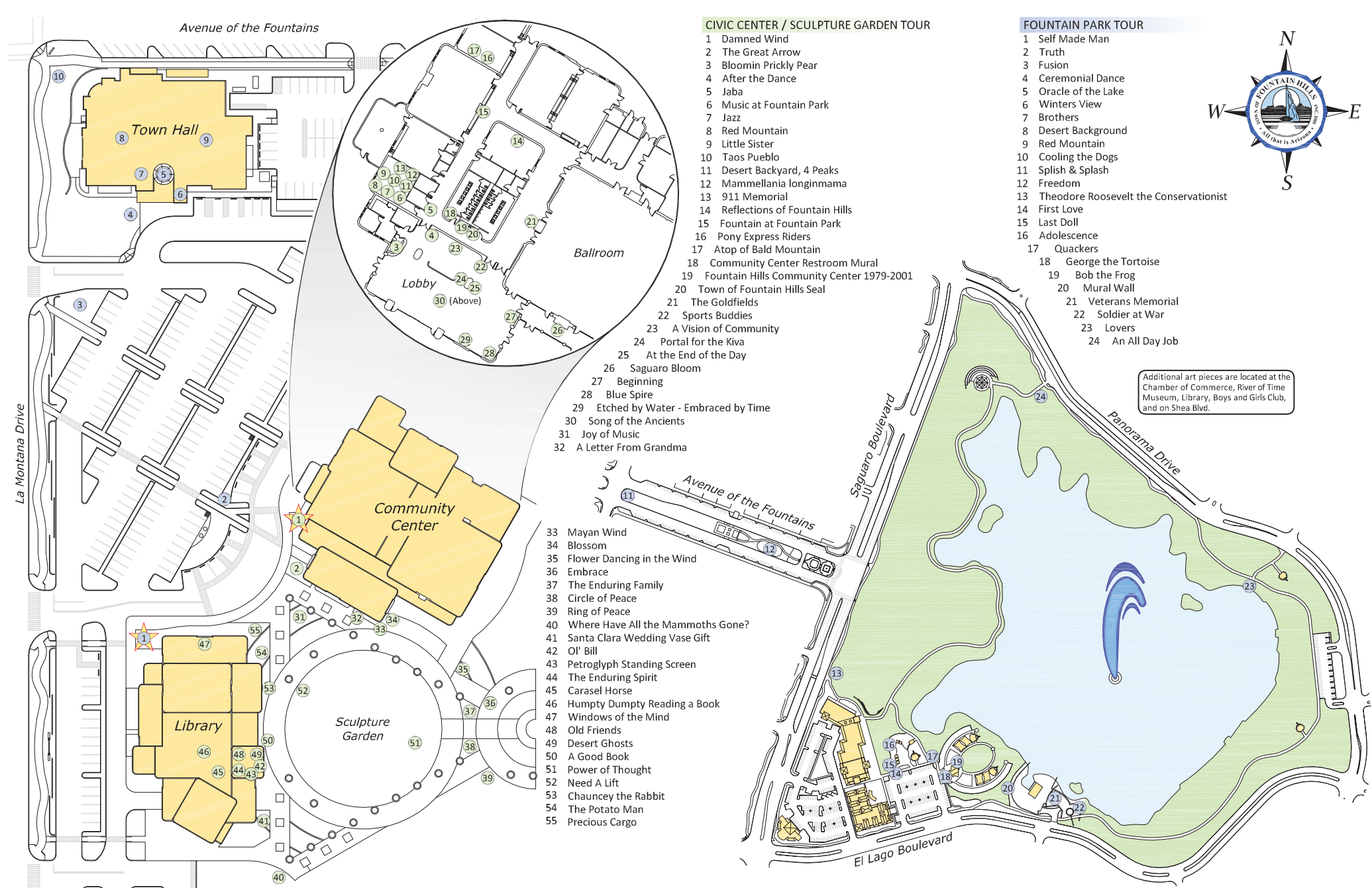
- Asparagus
- Basil
- Blackeyed Peas
- Bok Choy
- Broccoli
- Brussel Sprouts
- Carrots
- Cauliflower
- Celery
- Sweet Corn
- Endive
- Garlic
- Kale
- Lettuce
- Watermelon
- Onion
- Pepper
- Potatoes
- Radishes
- Squash
- Sunflower
- Tomatoes
- Turnips

Native Plants

- Lemon Tree
- Lime Tree
- Olive Tree
- Peach tree
- Pomegranate Tree
- Mesquite Tree
- Palo Verde Tree
- Saguaro Cactus
- Aloe Plant
- Barrel Cactus
- Mexican Fan Palm Tree
- Yucca
- Agave
- Prickly Pear
- Strawberry Hedgehog
- Organ Pipe Cactus

Fountain Plaza and Art Gardens

Urban Revitalization through Urban Agriculture and Art Park



 **Examples of Art on the Art Walk**

Fountain Plaza and Art Gardens

Urban Revitalization through Urban Agriculture and Art Park



Art and Ancient Symbols

Urban Agriculture and Art Gardens



Program



Completing the Avenue of the Fountains Streetscape to further promote commerce and draw visitors to Fountain Hills.



Design an Urban Agriculture installation that generates produce for area businesses and for a local farmers market to start.



Harvest storm water to be reused as the main source of irrigation for the plants on this site.



Further develop the existing Fountain Hills Art Walk and introduce new art into the landscape through sculptures, shade structures and plant specimens.



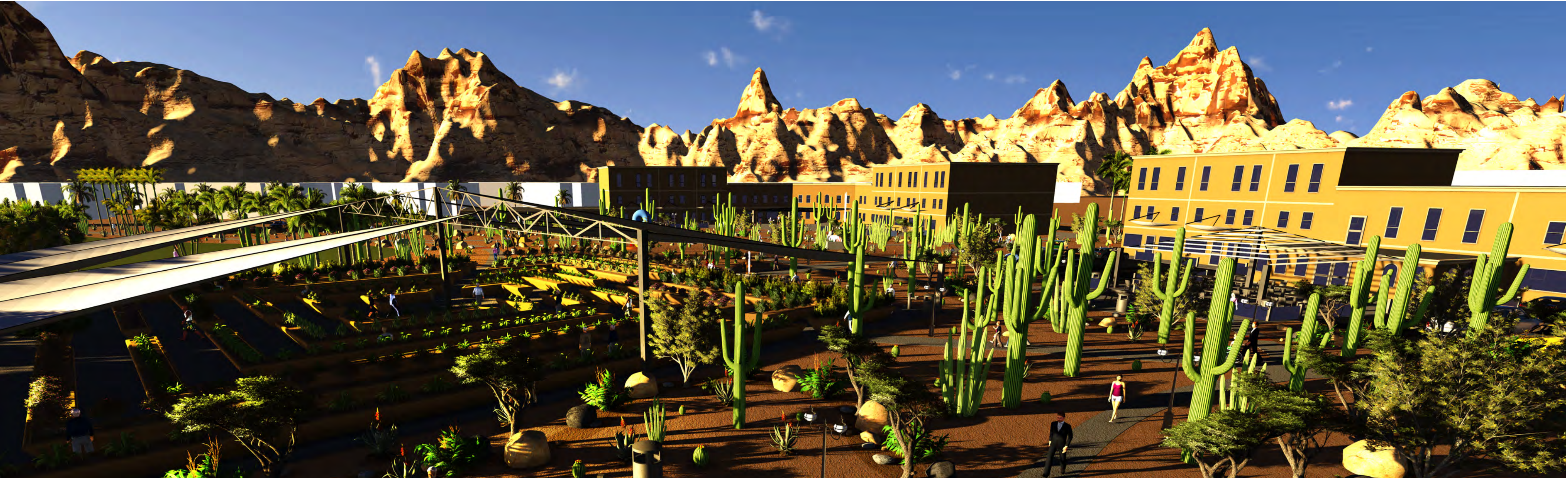
Create a connection between Fountain Park (across the street) and Fountain Plaza and Art Gardens for community events to be held simultaneously between the two.



Design a plaza and open spaces for events to be held at a community and individual scale.

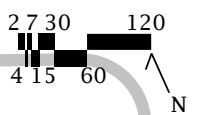
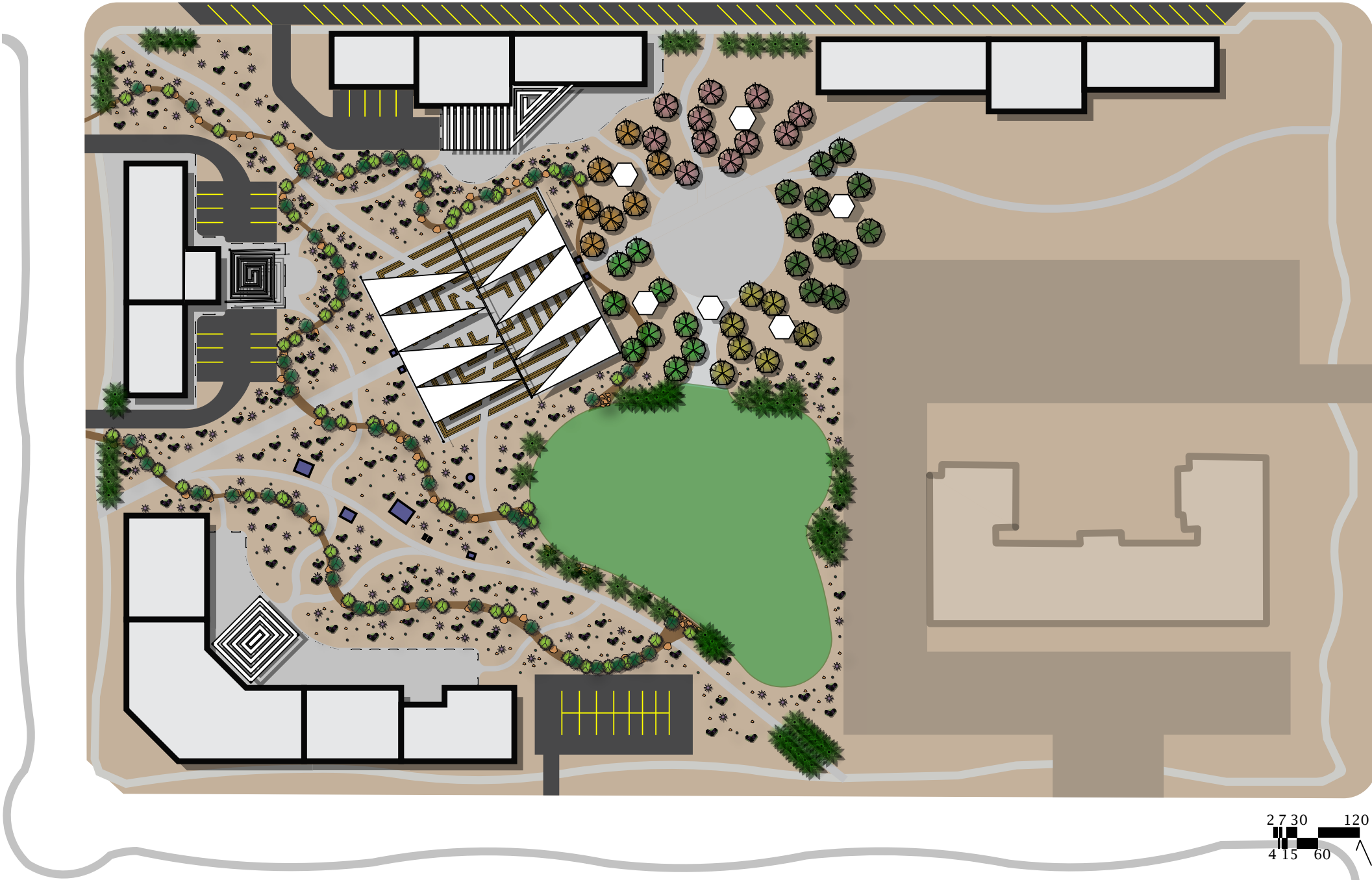
Fountain Plaza and Art Gardens

Urban Revitalization through Urban Agriculture and Art Park



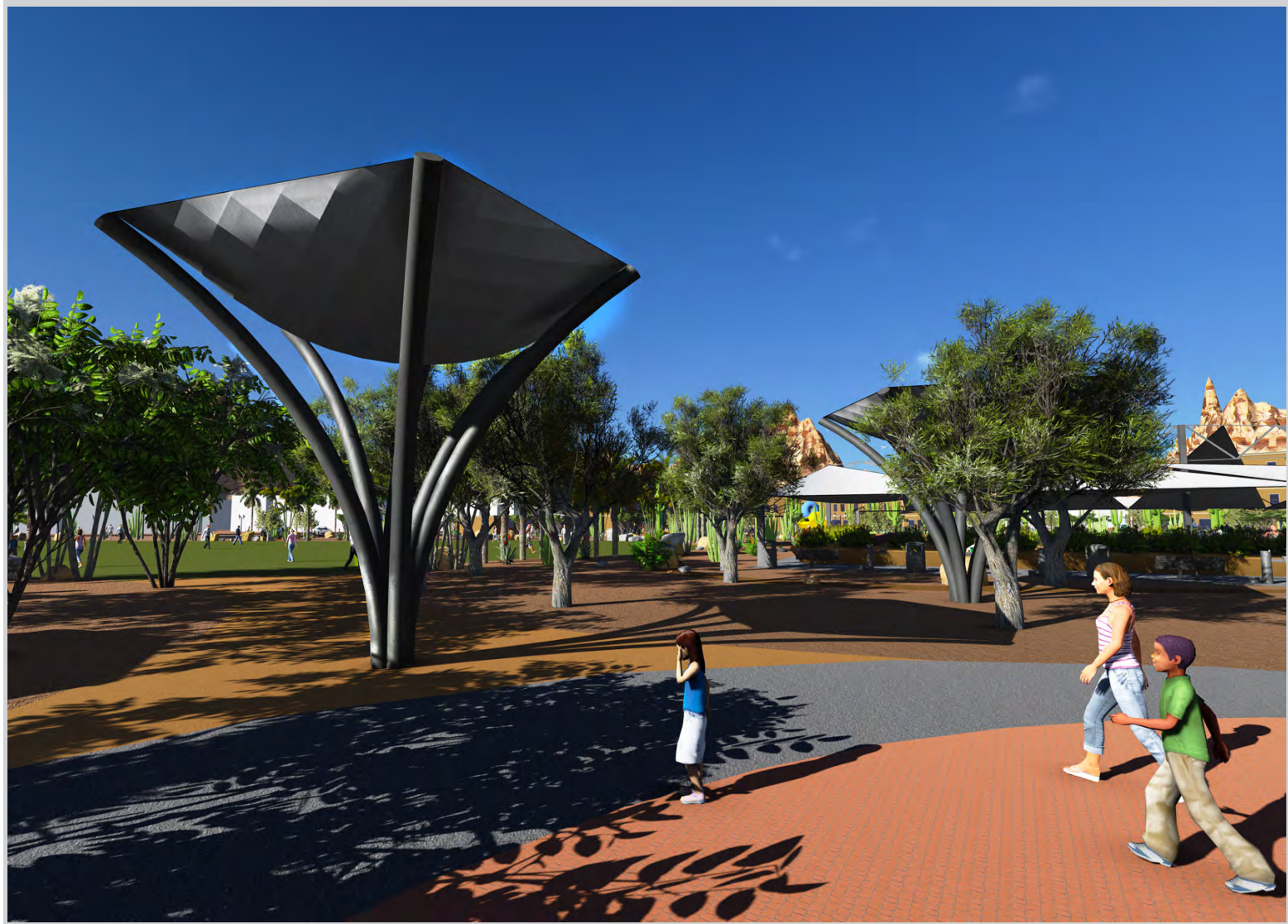
Fountain Plaza and Art Gardens

Urban Revitalization through Urban Agriculture and Art Park

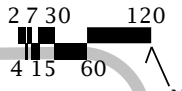
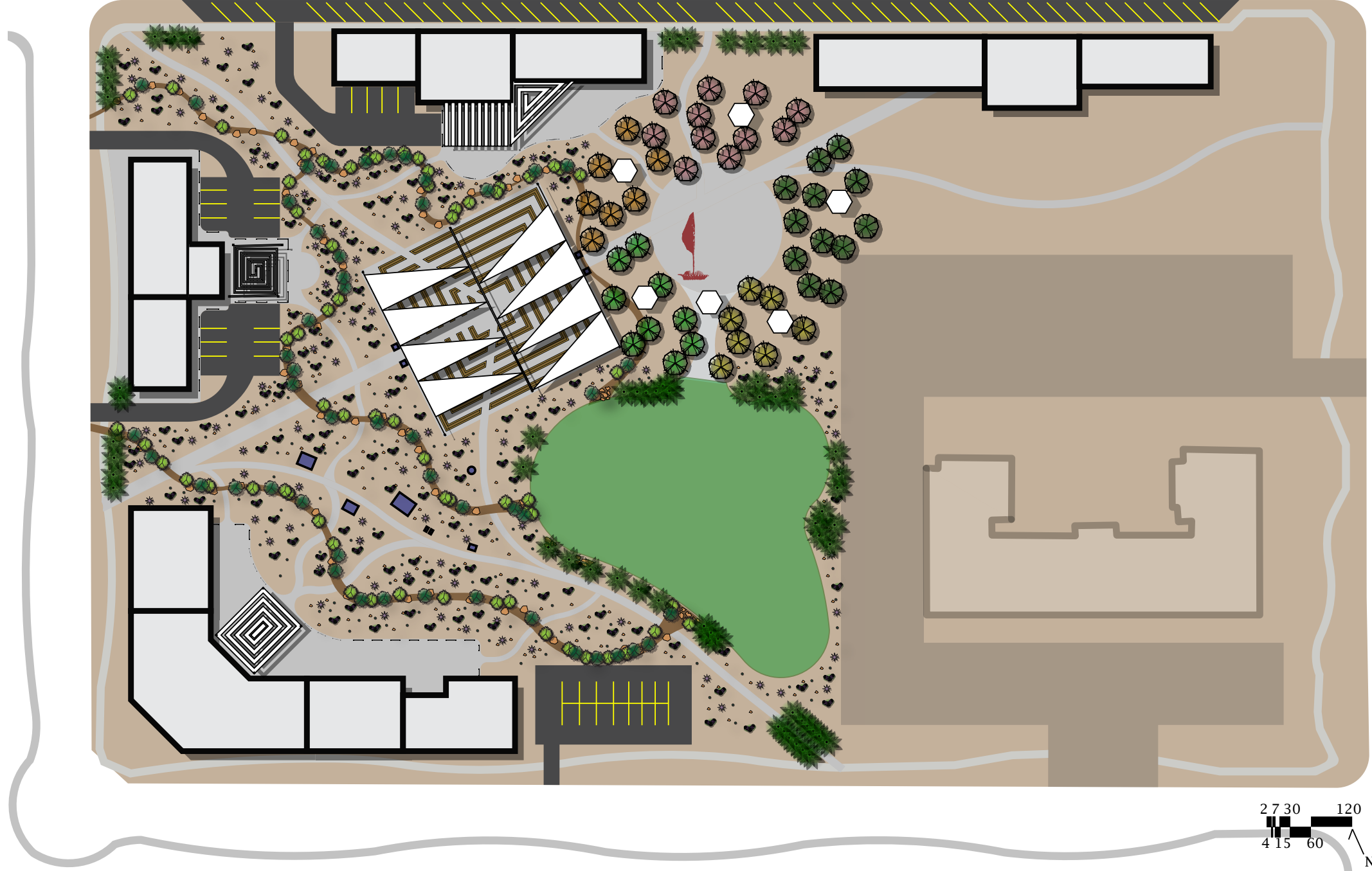


Fountain Plaza and Art Gardens

Urban Revitalization through Urban Agriculture and Art Park

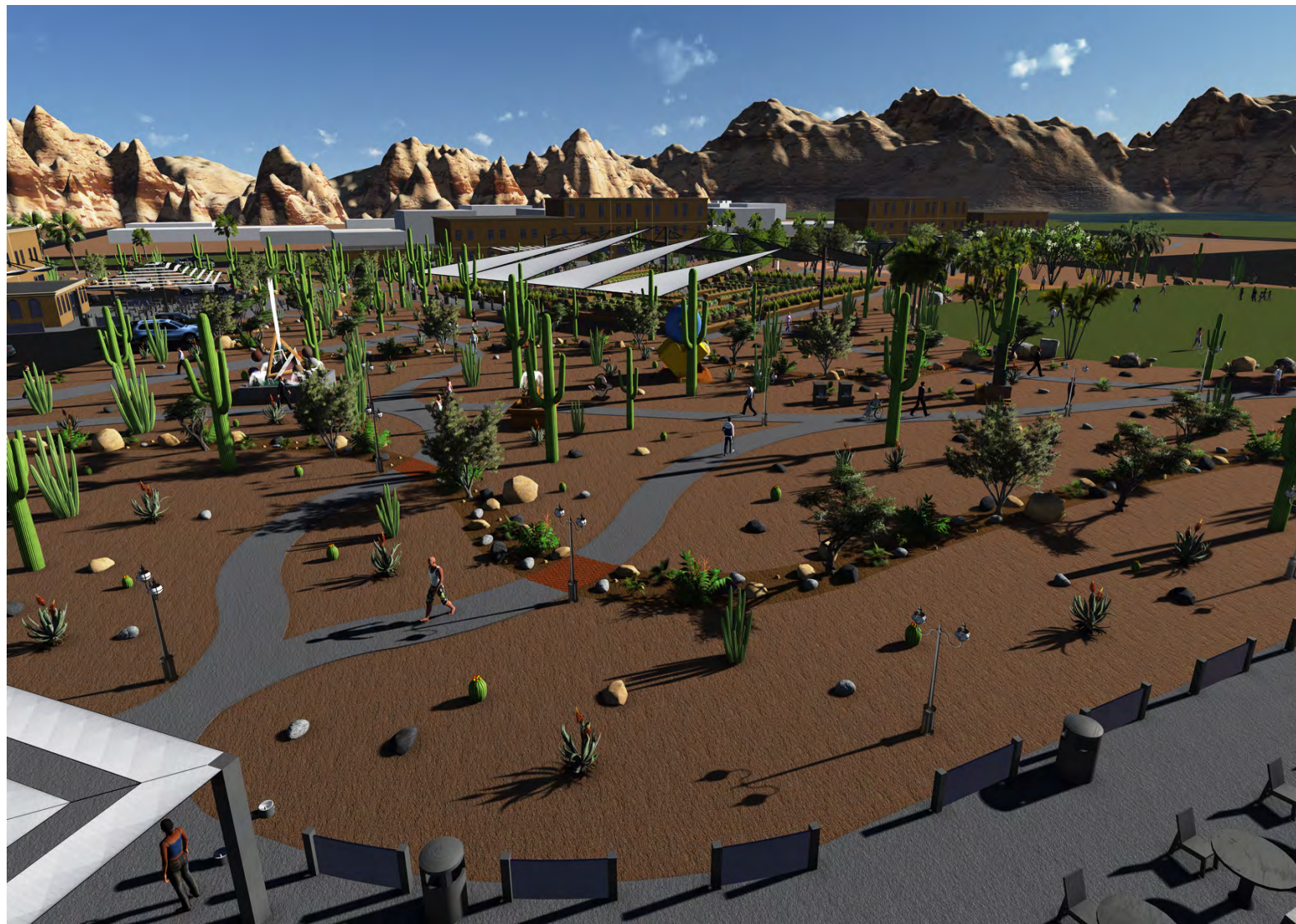


Tree Rain Sculptures

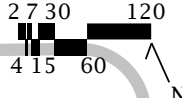
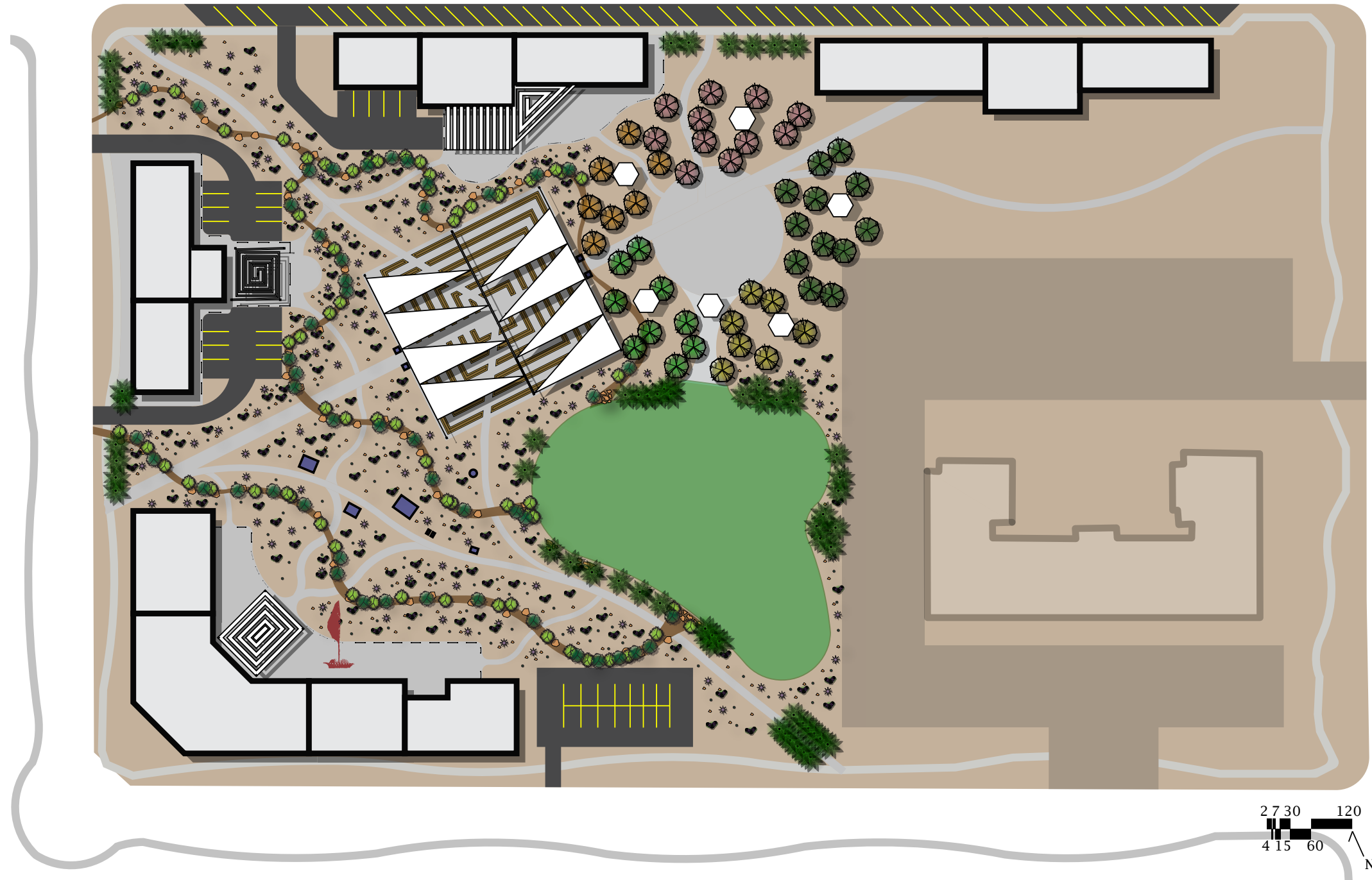


Fountain Plaza and Art Gardens

Urban Revitalization through Urban Agriculture and Art Park

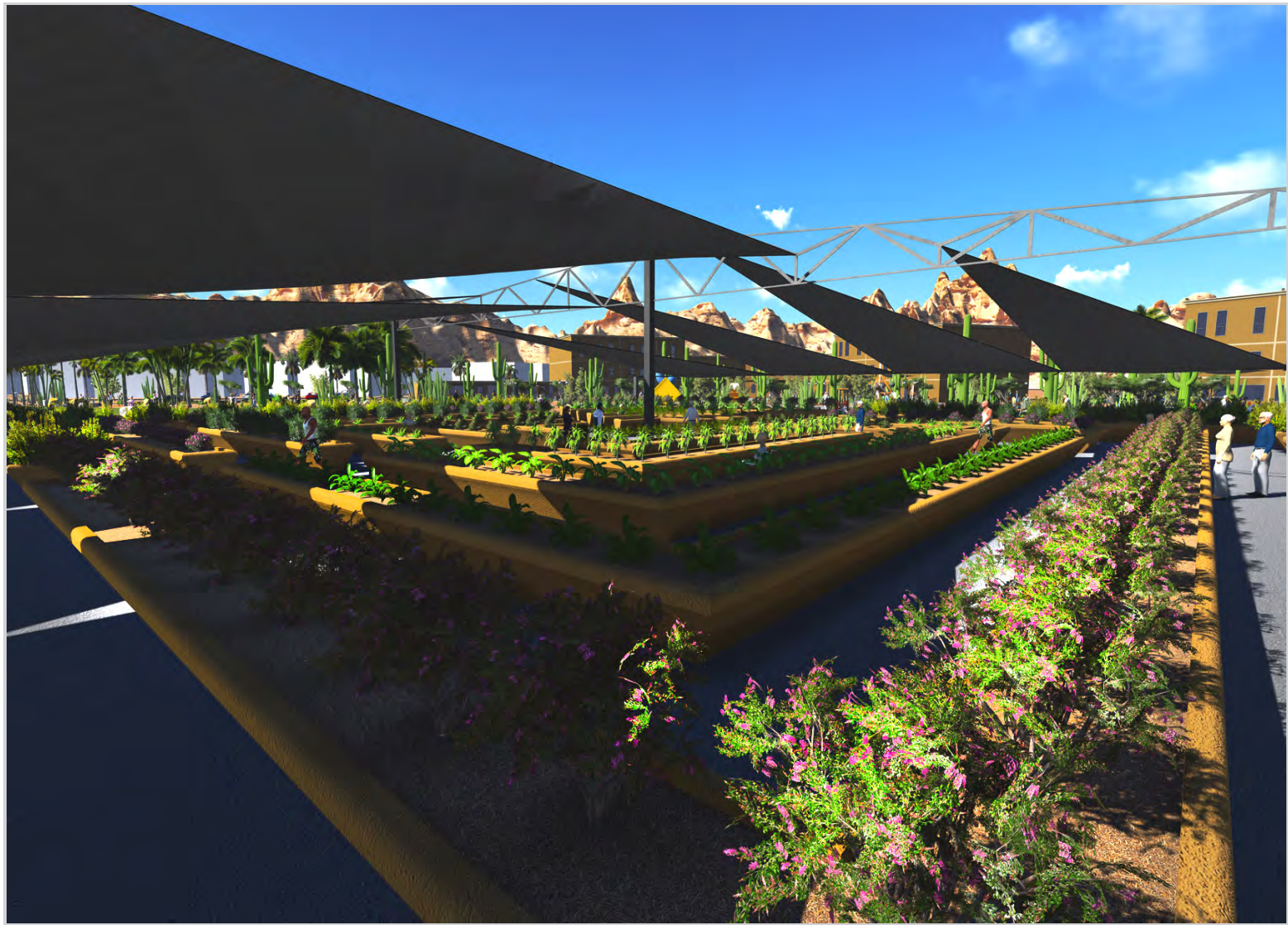


Art Gardens

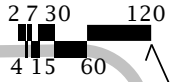
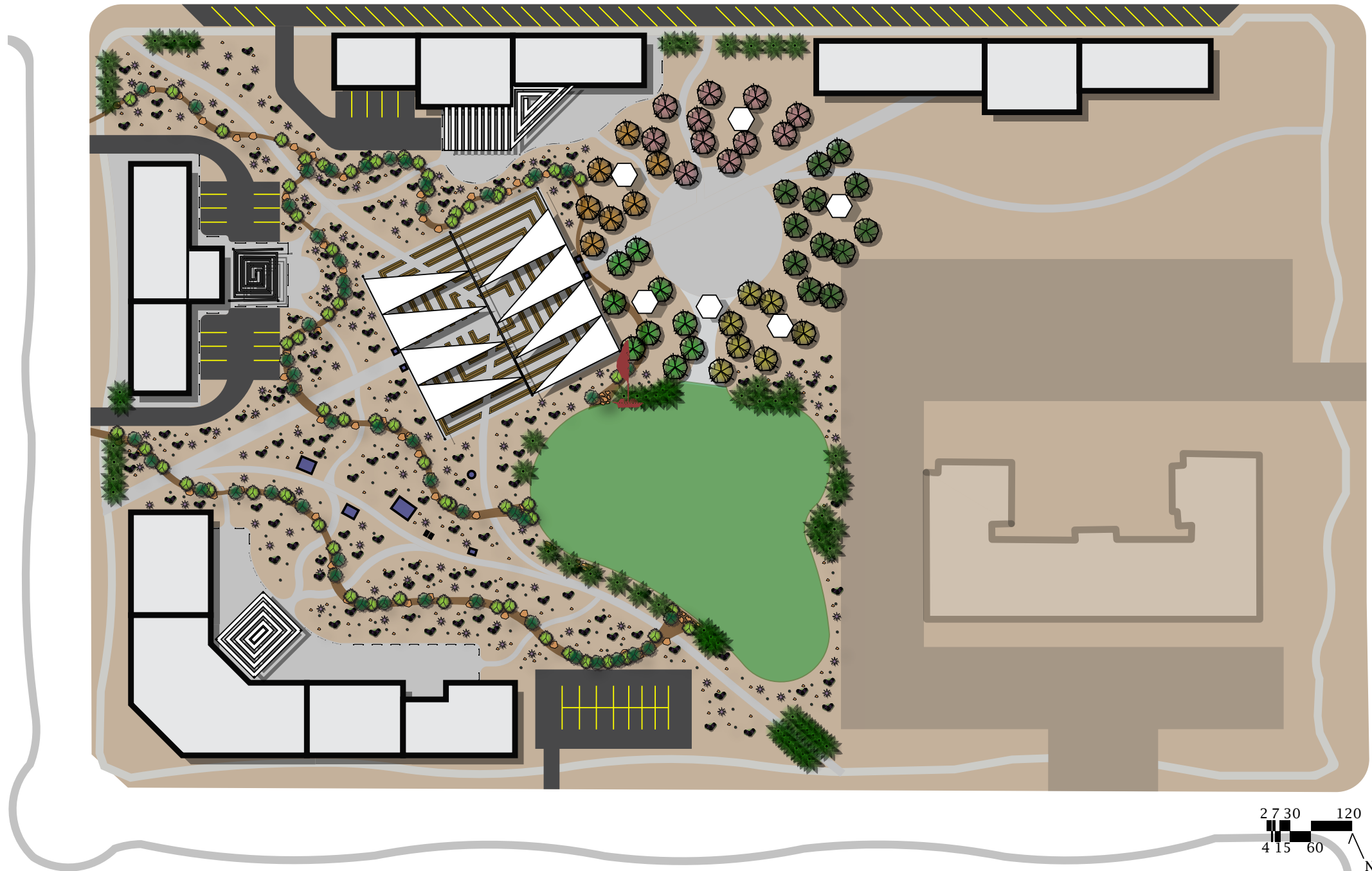


Fountain Plaza and Art Gardens

Urban Revitalization through Urban Agriculture and Art Park



Urban Planters

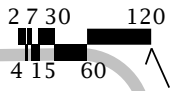
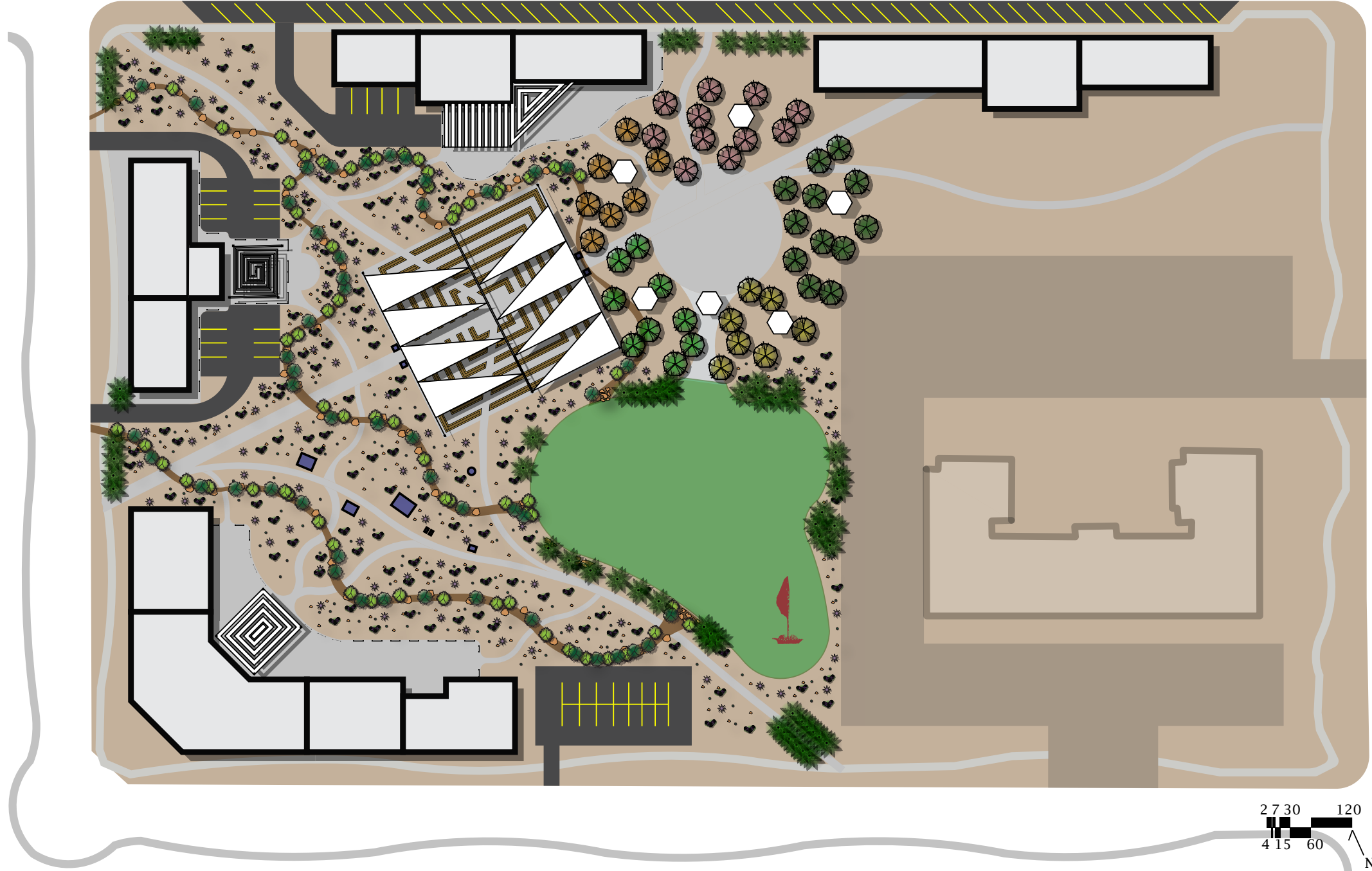


Fountain Plaza and Art Gardens

Urban Revitalization through Urban Agriculture and Art Park

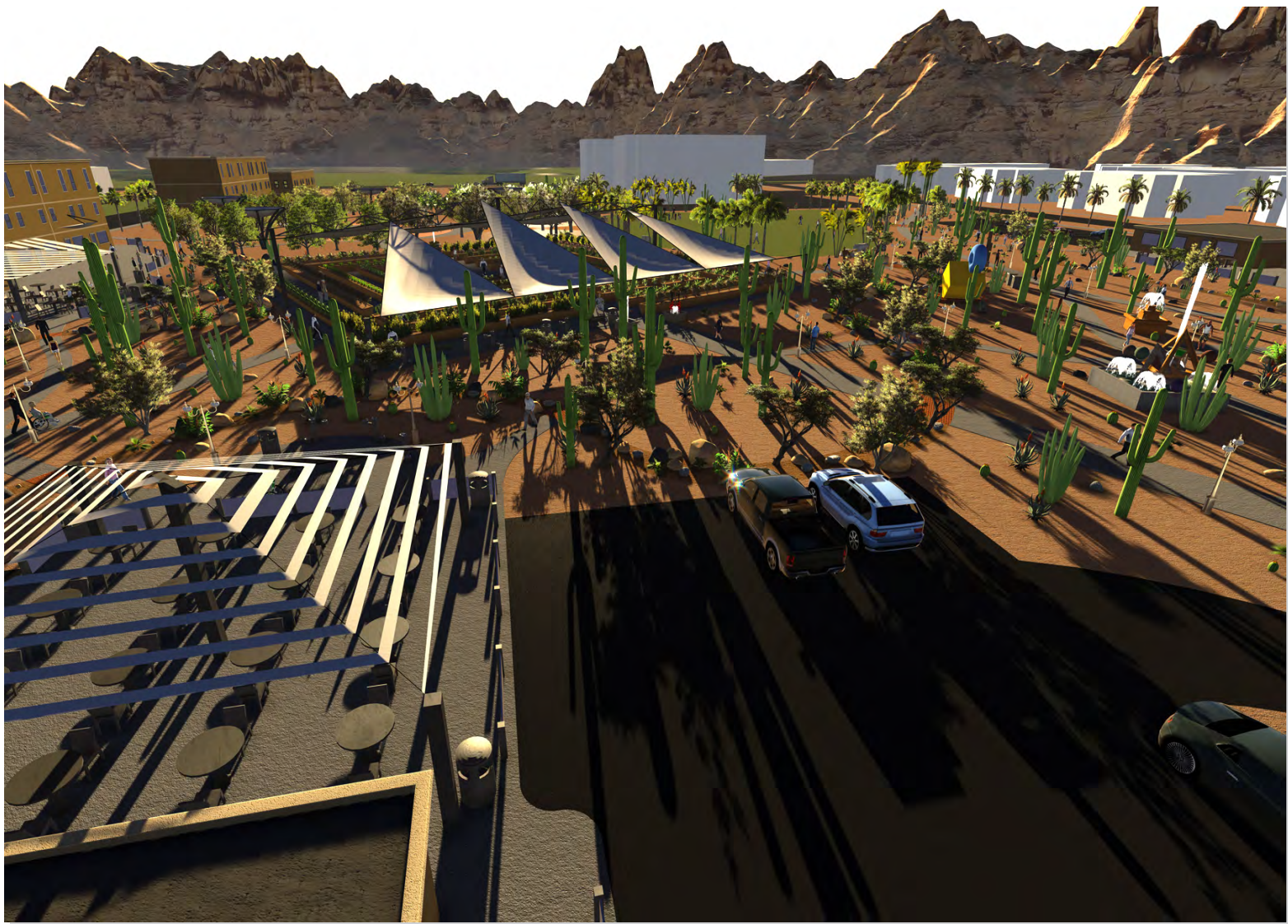


Active Grass Area

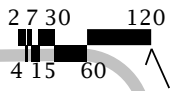
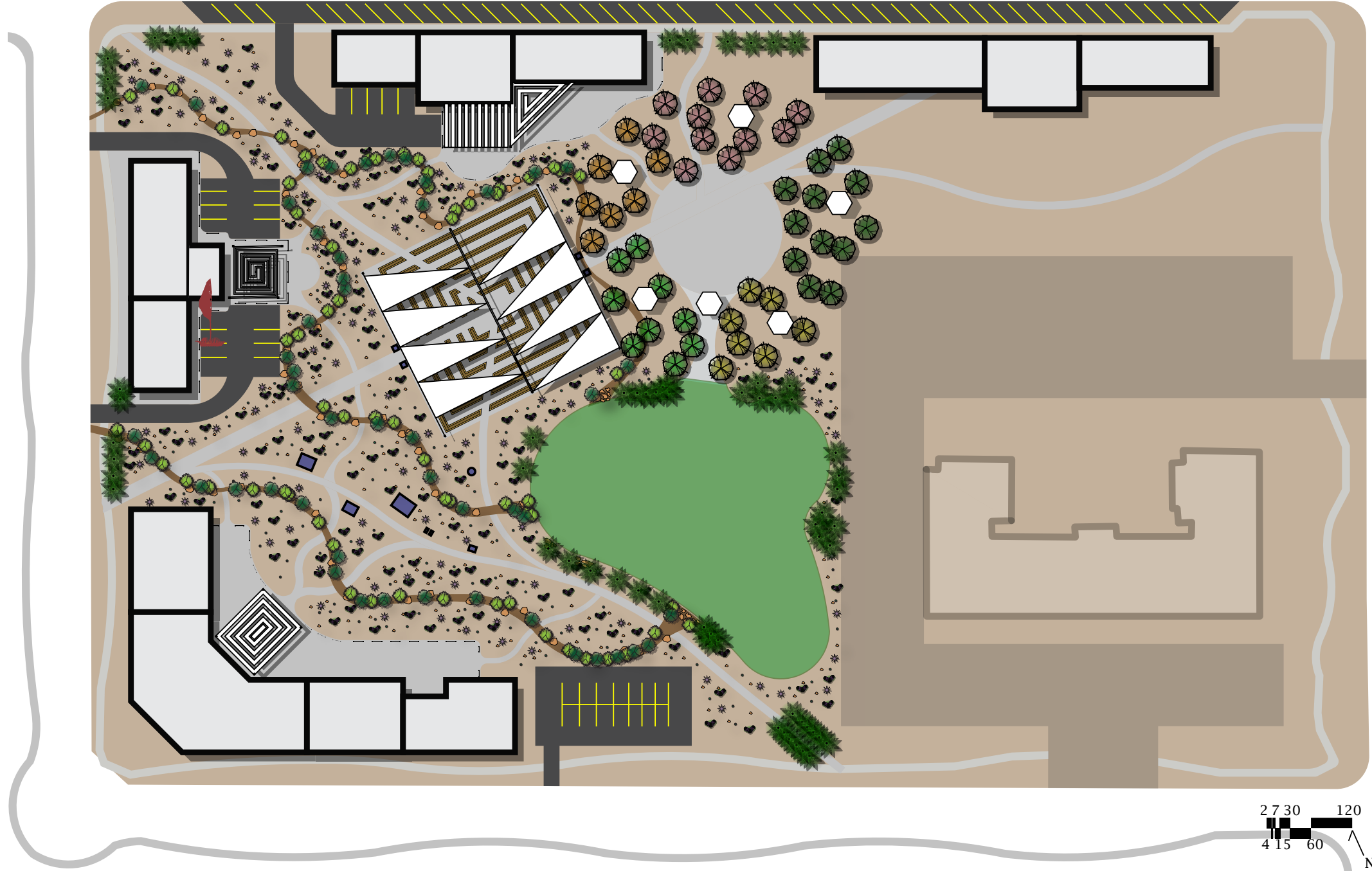


Fountain Plaza and Art Gardens

Urban Revitalization through Urban Agriculture and Art Park



Shade Structures



Fountain Plaza and Art Gardens

Urban Revitalization through Urban Agriculture and Art Park



Questions?

