

Brownfield *reclamation:* a plan for downtown Minot's riverfront.

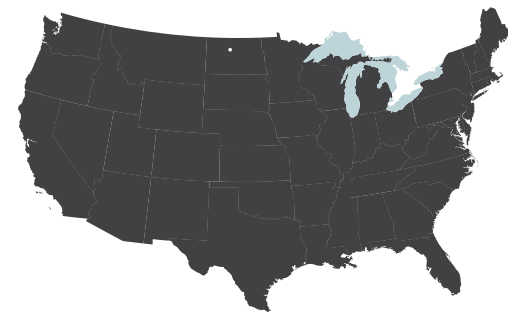
Ethan Gefroh.

Matthew Kirkwood.

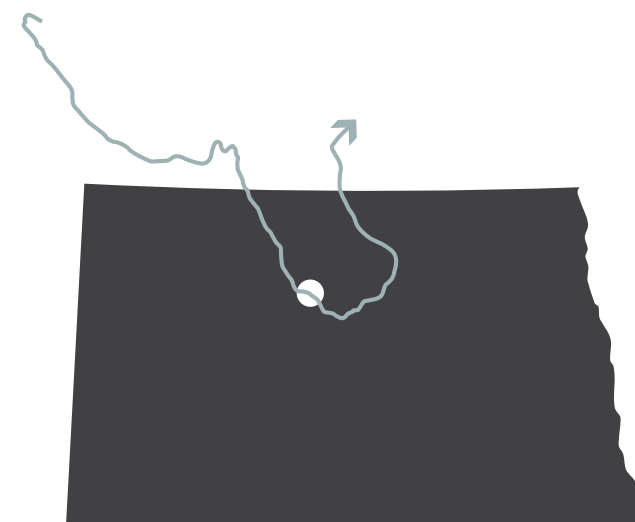
Michael Strand.

LA 572.

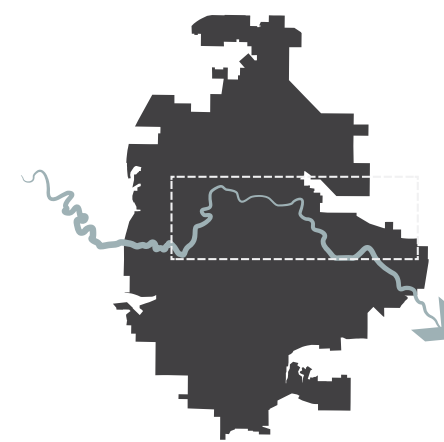
Spring 2014.



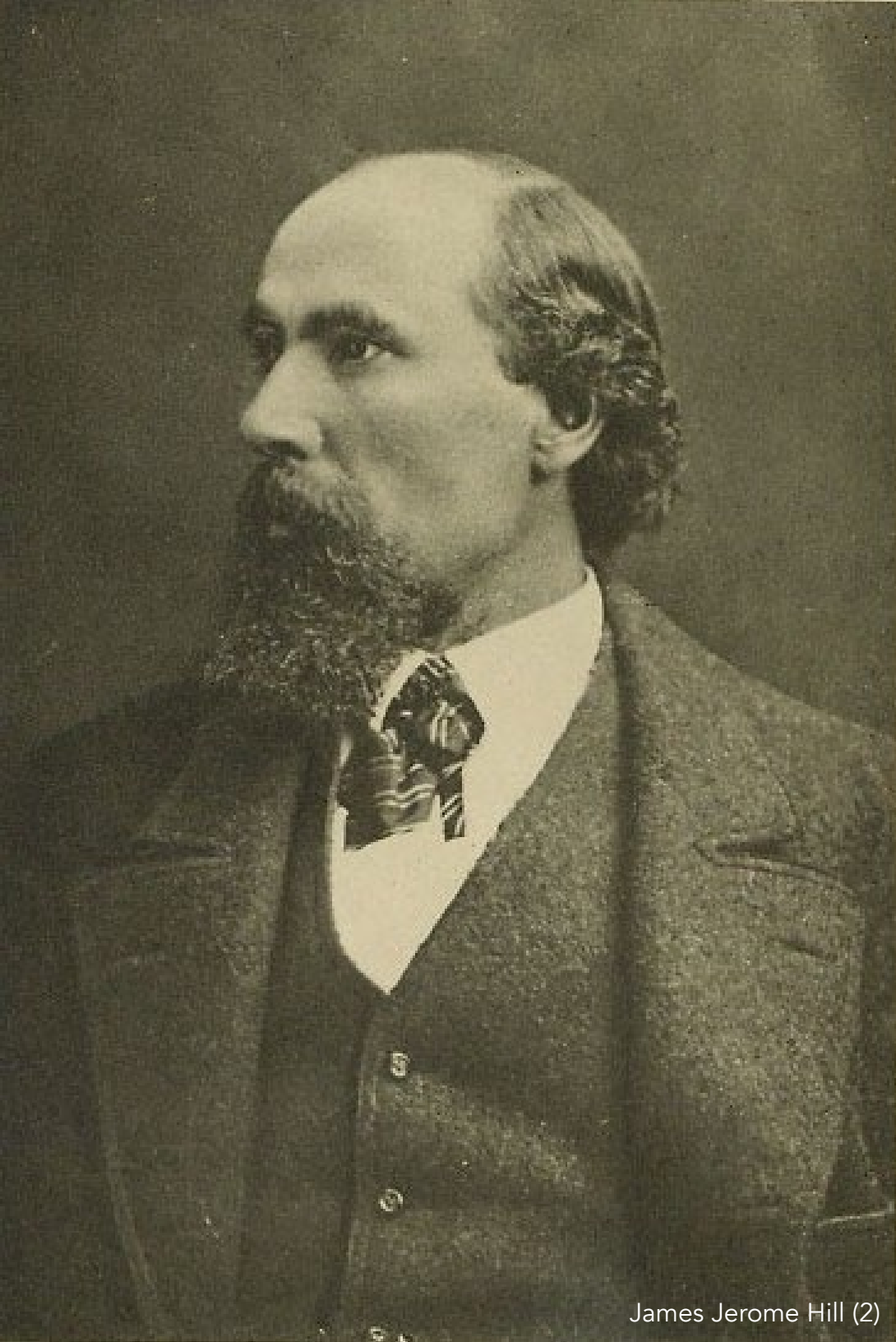
United States



North Dakota



Minot

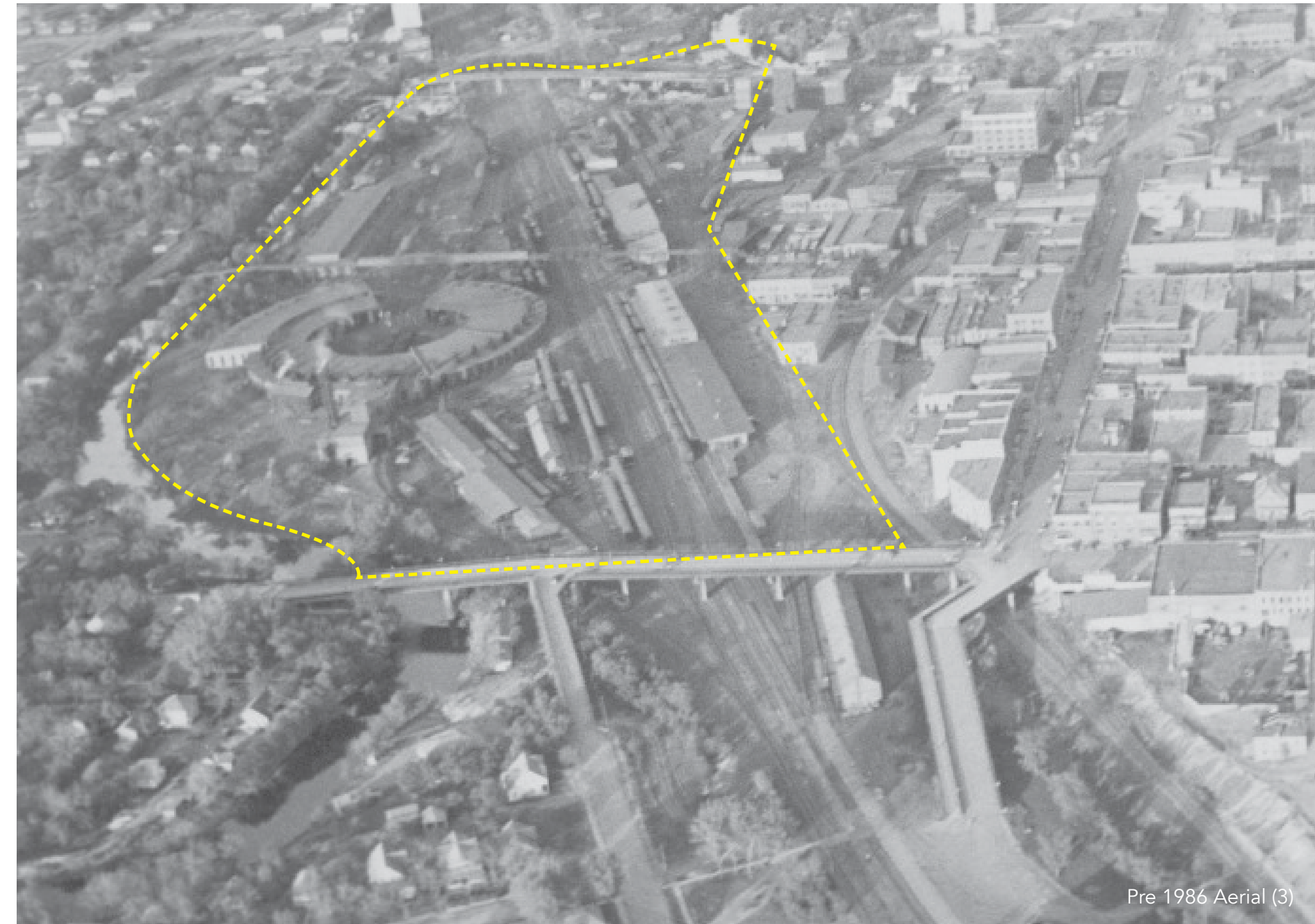


James Jerome Hill (2)

1882: Settled by Norwegian immigrant, Eric Ramstad.

1886: Purchased by SPM&M Railroad owner James Hill.

1886 - Present: Used as a Rail yard & Storage Site.



Pre 1986 Aerial (3)



United States



North Dakota



Minot

Souris River

scale | 1" = 200'



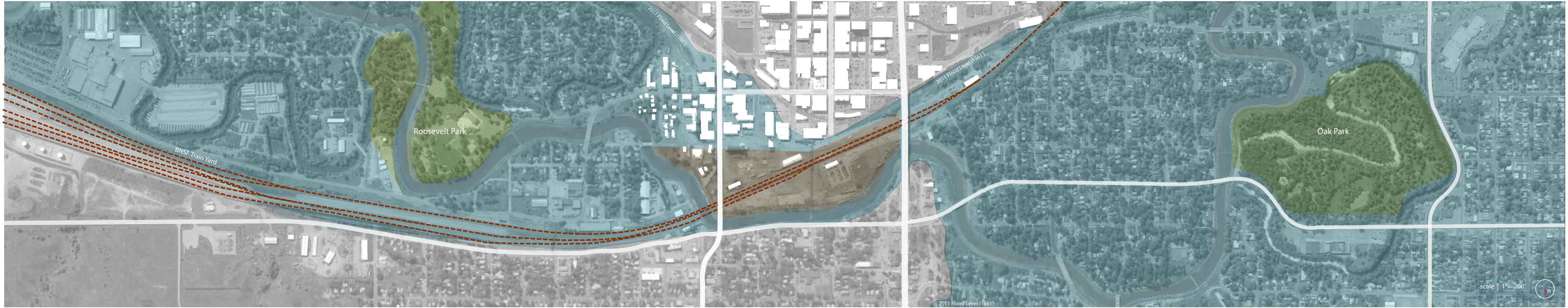


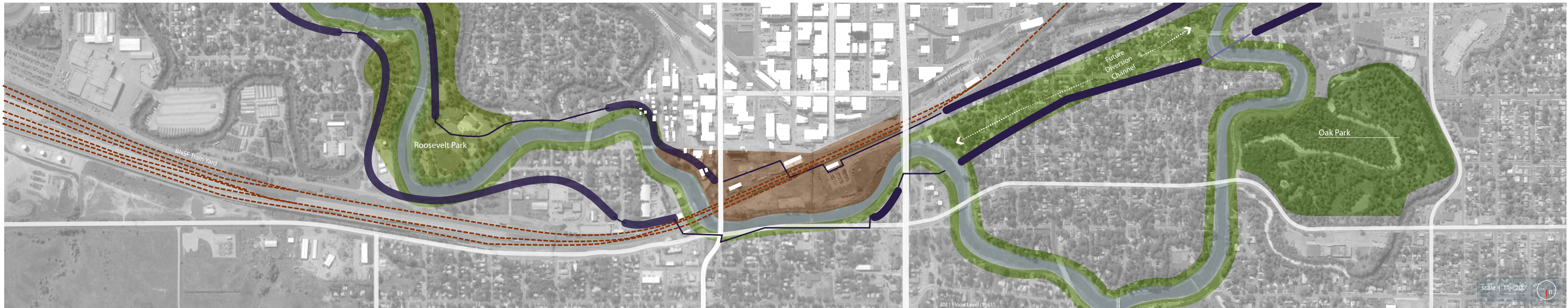














Anne Street Bridge





Anne Street Bridge

Broadway Bridge





3rd St Bridge

Anne
Street
Bridge





3rd St Bridge

Anne Street Bridge





Buffalo Bones

Anne Street Bridge

3rd St Bridge



DevelopmentProcess



Existing Conditions



DevelopmentProcess



Railroad Alignment



DevelopmentProcess



3rd Street Alignment



DevelopmentProcess

Brownfield Removal





Grain Elevator



Anne Street Bridge



Railroad Tracks

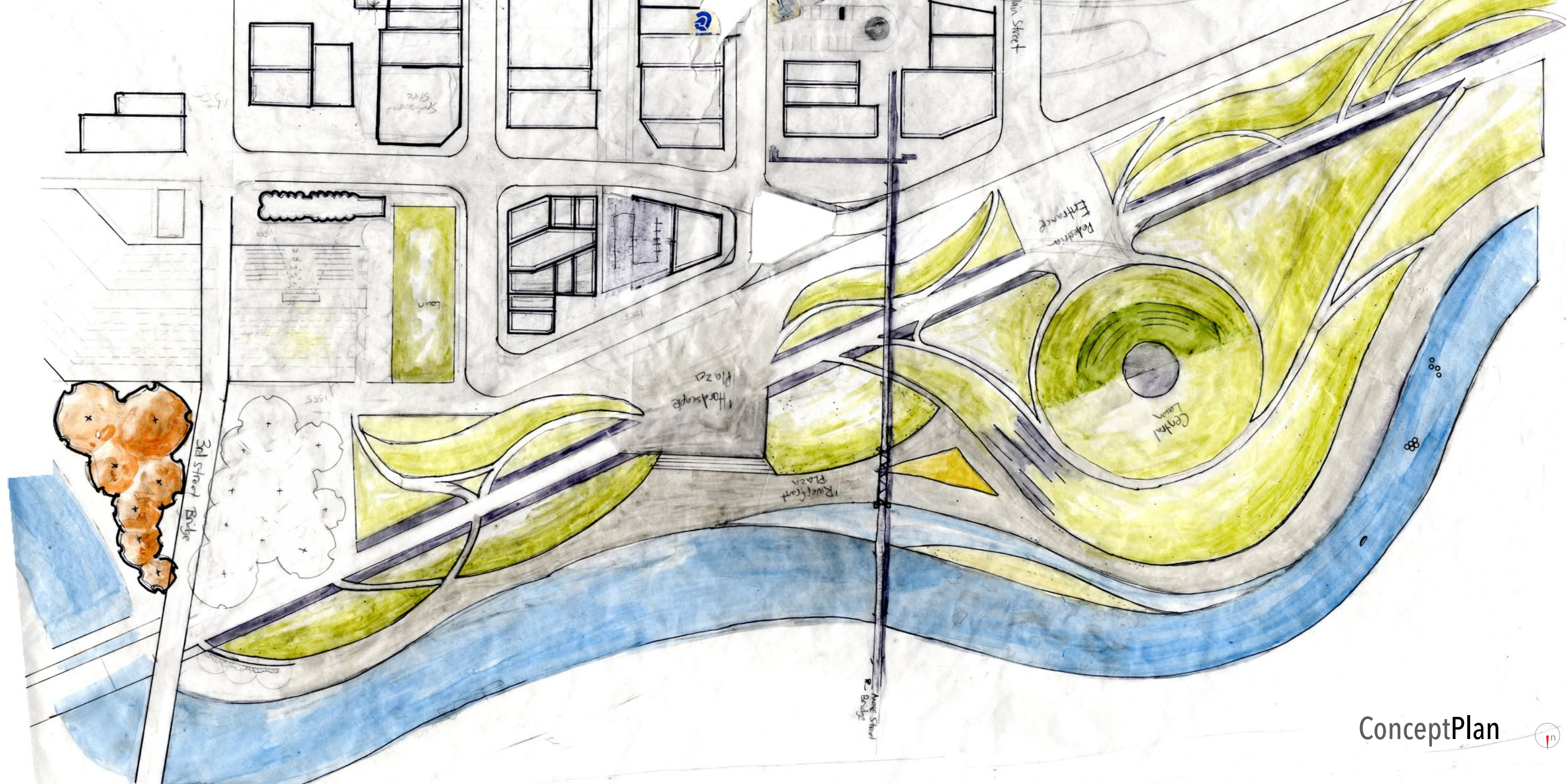
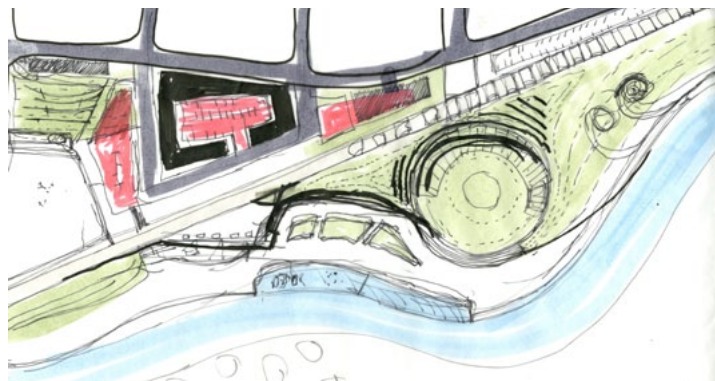
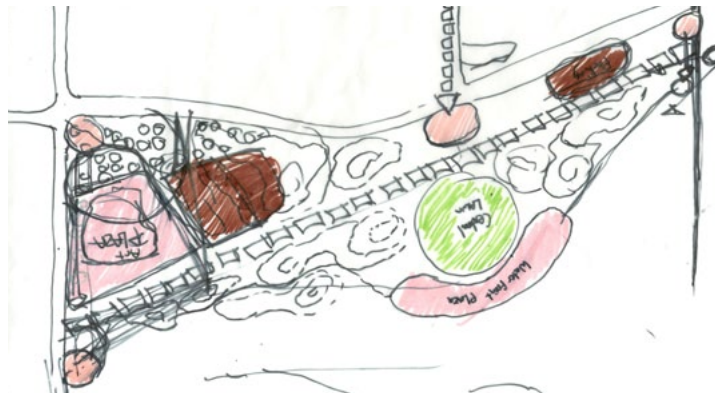
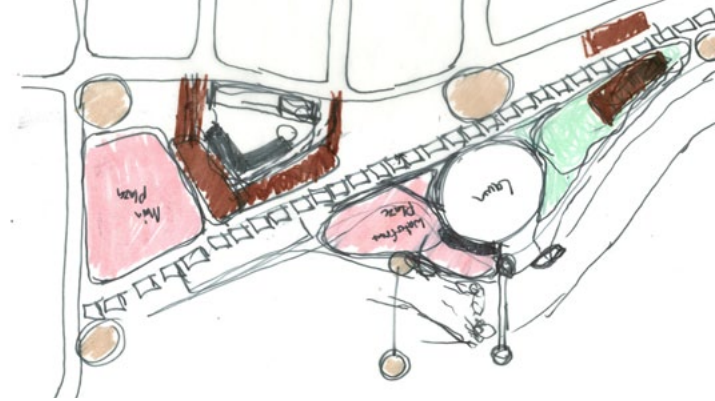


Roundhouse Foundation



Historical Remnants







DevelopmentProcess



Greenfield Implementaion



DevelopmentProcess



Development Catalyst





1550' Flood



1555' Flood



1562' Flood



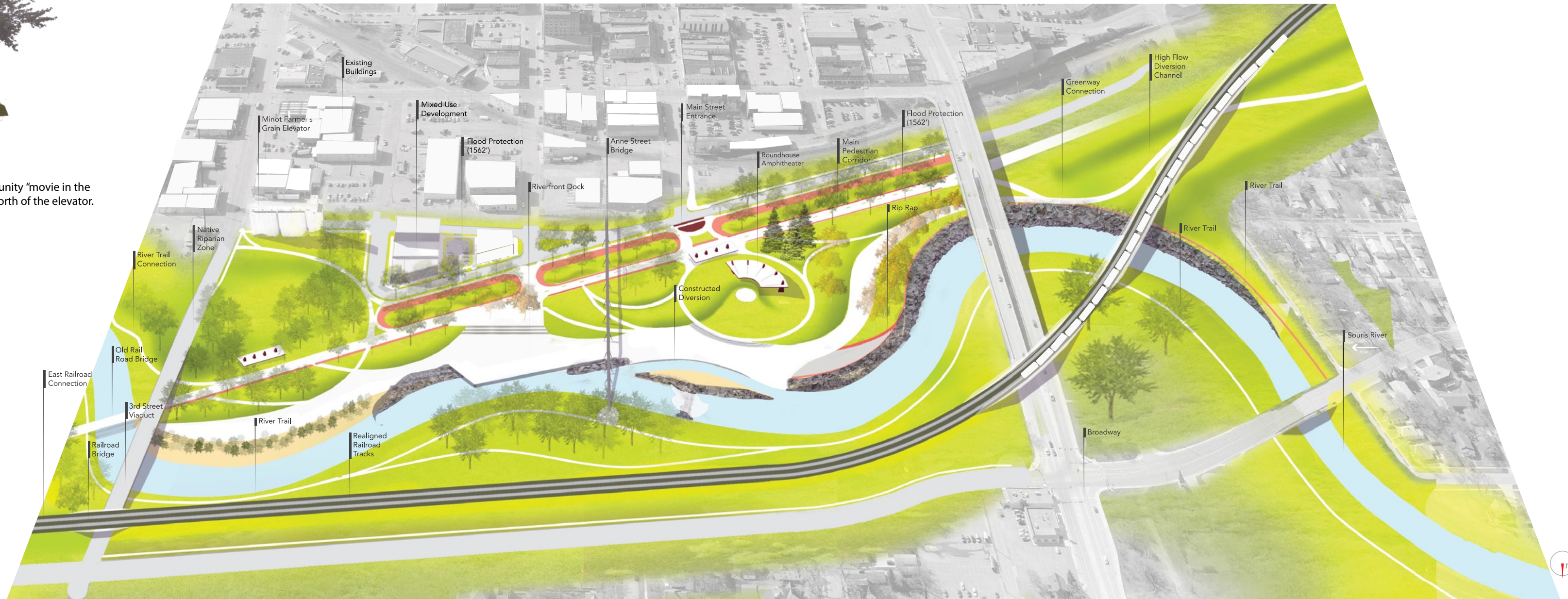
Minot Farmers Grain Elevator

A 100' projection screen is hung on the north side of the elevator for community "movie in the park" nights. Movie viewers are welcomed to sit on the gently sloping hill north of the elevator.

Riverfront Plan

Seasonal flooding is a reoccurring issue for the City of Minot. Since 1881 there have been ten recorded floods, the biggest flood however occurred in June of 2011. During the 2011 flood, the Souris River flowed through Minot's valley for approximately 2 weeks and crested at a surface elevation of 1562'. In total, over 4,000 homes were damaged beyond repair, and approximately \$800,000 dollars worth of damage was done to public and private property.

Subsequent to the 2011 flood, city officials adopted an enhanced flood protection plan consisting of: levees, flood walls, high flow diversions, and river channel alignments. The brownfield reclamation project fits within the parameters of the adopted flood protection plan and enhances the connectivity between the downtown and riverfront.





MasterPlan

1. Main Street Entrance

The entry ground material consists of Purlington Pavers (dating back to the early 1900's) which were uncovered during a recent Amtrak Depot renovation. The pavers were previously used as a railroad platform serving as the entrance to Minot in the early 1900's. Today, they will welcome pedestrians to the new riverfront park just as they welcomed train passengers to Minot in the past.

2. Crushed Gravel Path

3. Flood Protection

Flood protection consists of 4' mounds with a top elevation of 1662'. The mounds are vegetated with native grasses, which stabilize the mounds during a flood event. To allow for unobstructed access to the park, the mounds are not continuous, and therefore sand bagging will be needed should the river level rises above 1558'.

4. Public Art Display

The main pedestrian corridor unifies the park. The corridor is constructed between the former railroad tracks. The Salvaged tracks are incorporated into the paving pattern and serve as a transition between the colored concrete and crushed gravel path.

6. Restrooms / Concessions

7. Playscape

8. Roundhouse Amphitheater

The Roundhouse Amphitheater is an outdoor amphitheater designed for the performing arts community. The 50' performance pad is big enough to accommodate any event from an outdoor lecture to an outdoor concert. The form and location of the overhead structure is inspired by the Great Northern Round House which previously occupied the area.

9. Roundhouse Lawn

The Roundhouse Lawn is a robust space for active recreation or leisurely activity. The Lawn is designed to be flooded in the winter as an outdoor ice skating rink. The tapering mounds that define the space give onlookers unobstructed views to the lawn.

10. Riverfront Plaza

11. Splash Pad

The splash pad is an interactive water feature geared toward children. However, the splash pad will also serve as a memorial of the 2011 flood. Between the dates of June 21st and July 2nd, the splash pad fountains will be projected to the river level in 2011. This feature becomes a visual reminder and measures the time frame of the historic flood.

12. Constructed Diversion

The constructed diversion is a 3' deep concrete channel that provides pedestrians direct access to the Souris River. The diversion is bordered by step terraces to the south and a sandy beach front on the north.

13. Outcropping Weir

14. Seating Dock

15. Rip Rap

16. Native Riparian Zone

17. River Trail Connection

18. Anne Street Bridge

19. Lawn

20. Minot Farmers Grain Elevator

The Minot Farmers Grain elevator is an iconic structure within the park. The elevator is restored and re-purposed as an outdoor projection screen. A 100' projection screen is hung on the north side of the elevator for community "Movie in the Park" nights. Movie viewers are welcomed to sit on the gently sloping hill North of the elevator.

21. Decorative Crosswalk

Existing Building

In fill

3rd Street

