

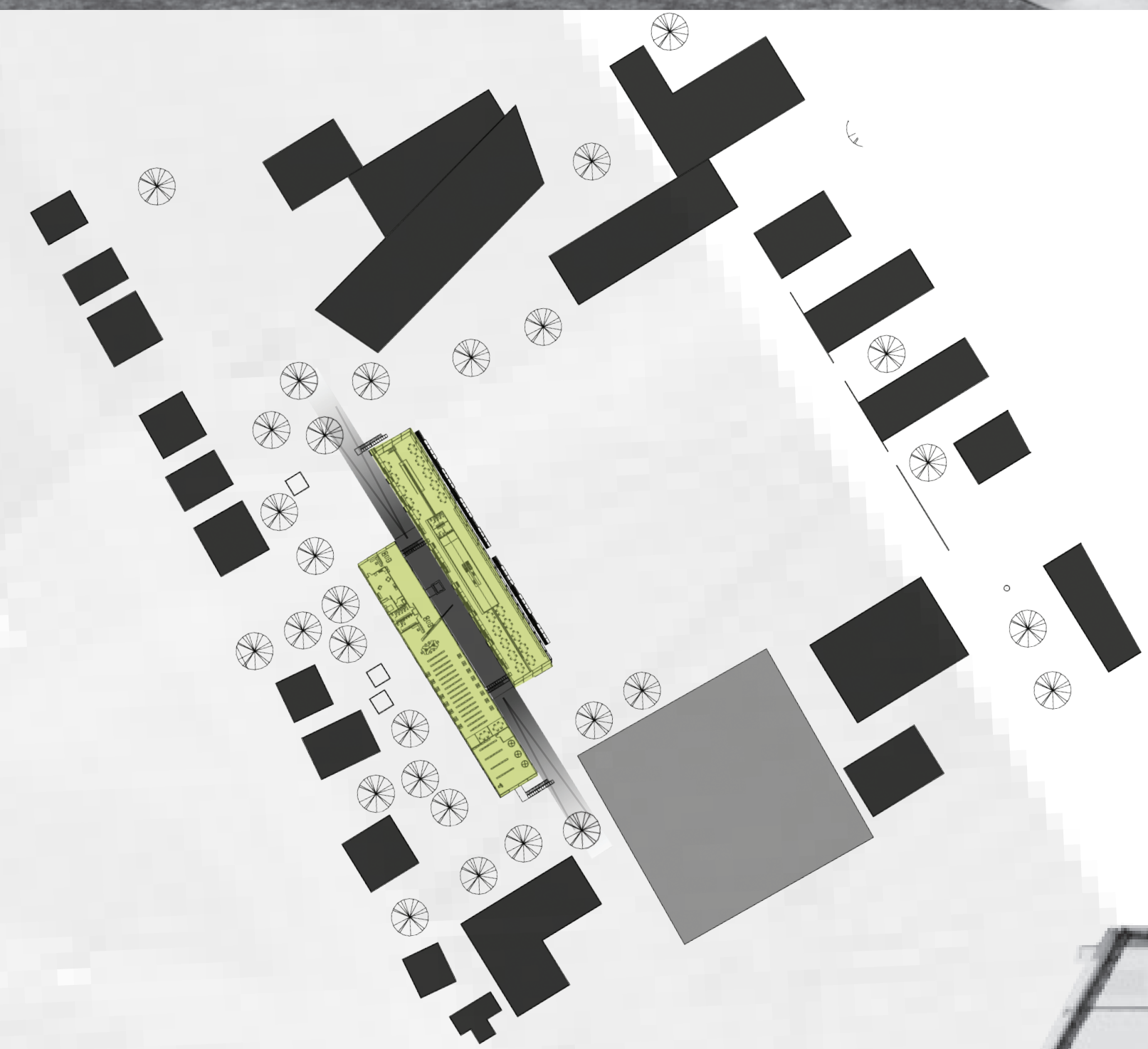
Bridging the Gap - Sustainability through Techné

A study of green applications in student housing for Wesleyan University



Famous German philosopher Martin Heidegger speaks of techné as a platform to allow something to present itself - a way of revealing

Located at Wesleyan University in Middletown, CT the dormitory will provide much needed dwellings for their undergraduate students, who are required to live in campus housing for the entirety of their schooling. The building is placed within an under utilized field and offers a *bridge* between campus and the students, the main campus to outlying buildings, the public to the school, and the students to one another.



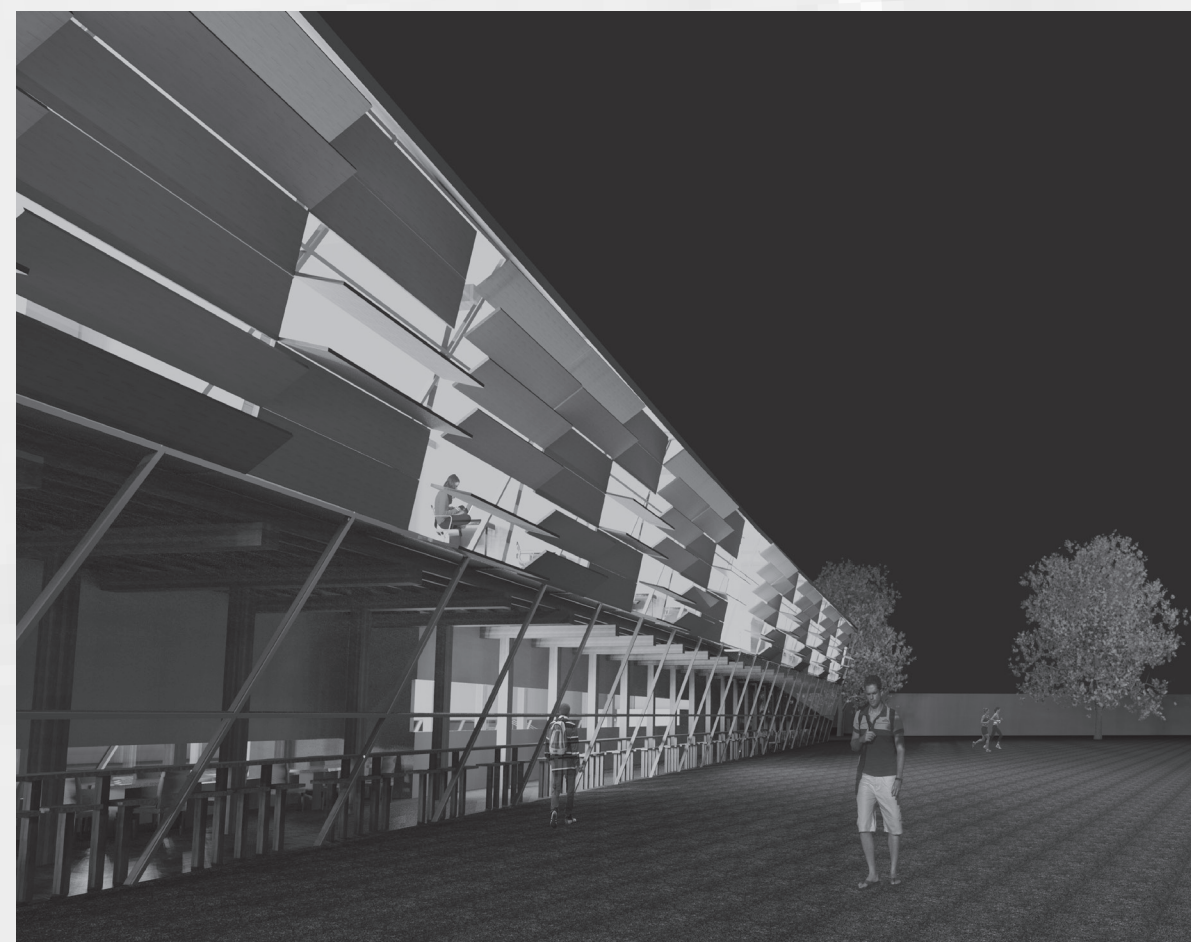
“It is the tragic fate of our modern civilization that the development and specialization of scientific and technical abilities has crippled our powers to treat ourselves (properly)”
-Hans Georg Gadamer - *The Enigma of Health*

In the time of technical solutions, it is important to reawaken a participatory action.
Gadamer’s theory can be applied to the *balance* in the environment as well. The focus, then, lies in the ability to implement technical sustainable solutions without alienating our experiences. By engaging participatory actions we can add another dimension to the technology-focused field of sustainability.
Through the program of student housing, my thesis reinterprets sustainability in an *experiential* realm, and creates a design that encourages connections with nature and one another. The architecture seeks to form long-lasting habits that benefit the ecosystem and students alike.

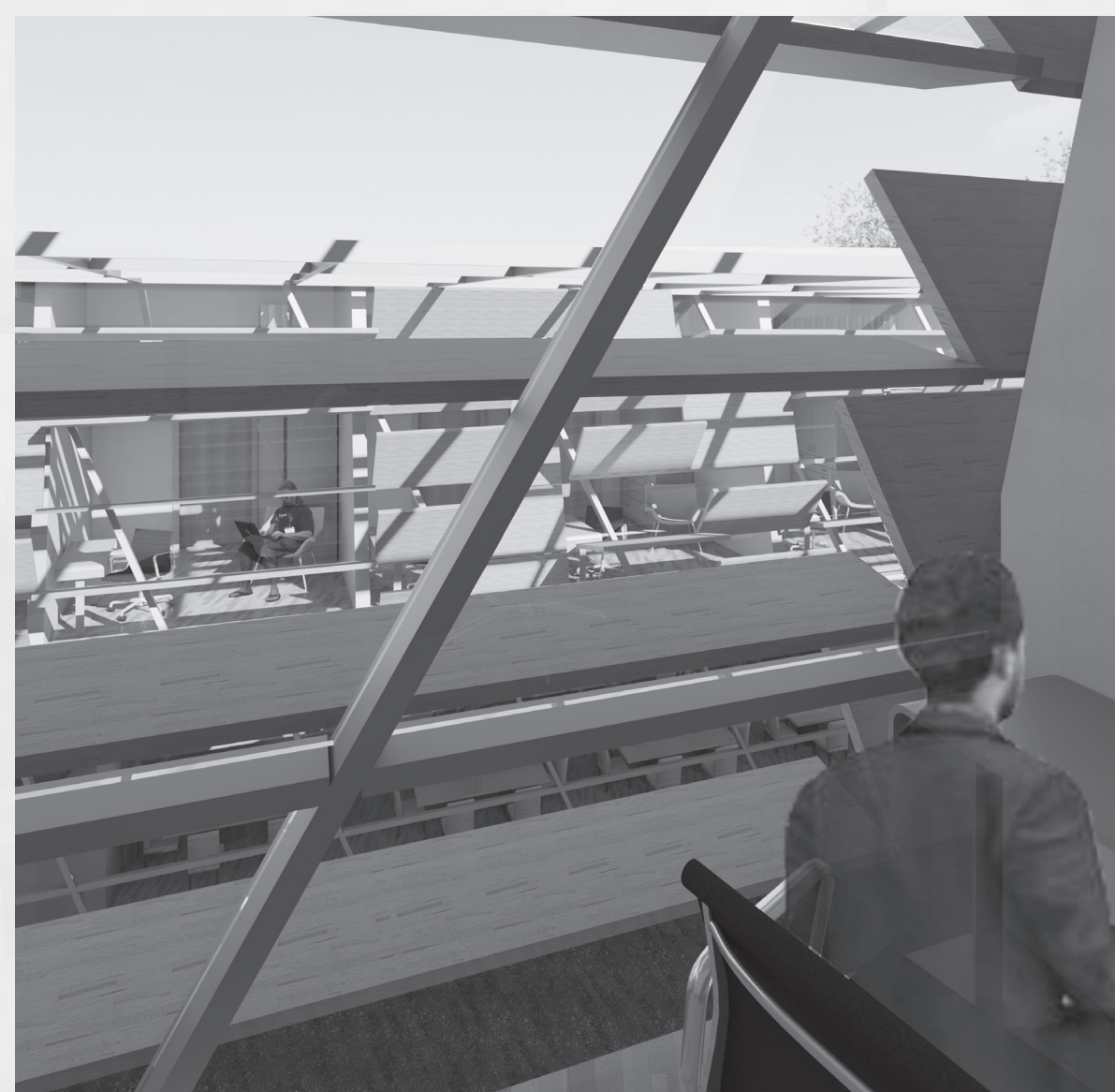




The dining area is designed to limit views to the other side. When standing, the partial wall impedes views - but when seated, the opportunity is provided to make *contact* with diners on the opposite side of the wall.

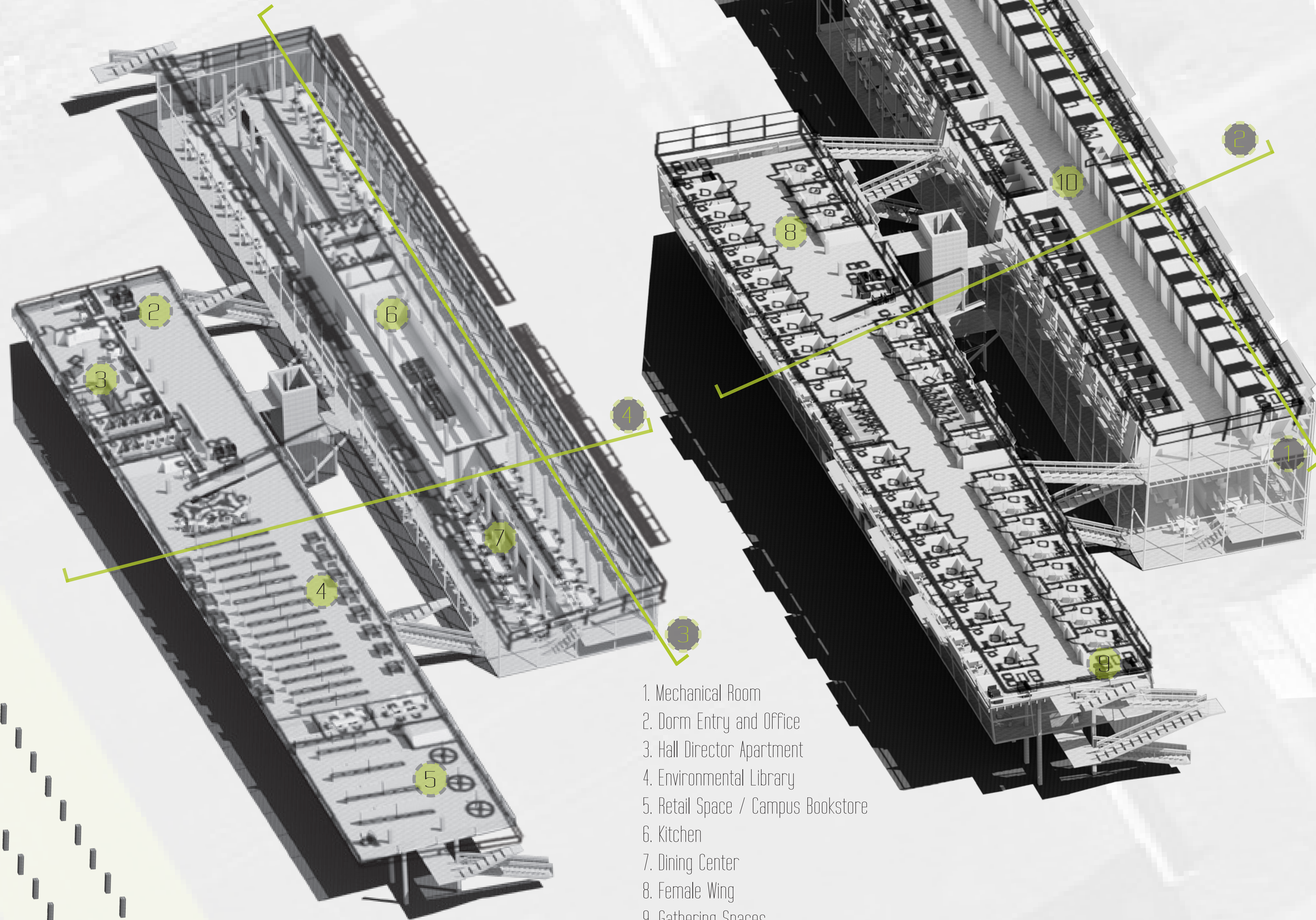
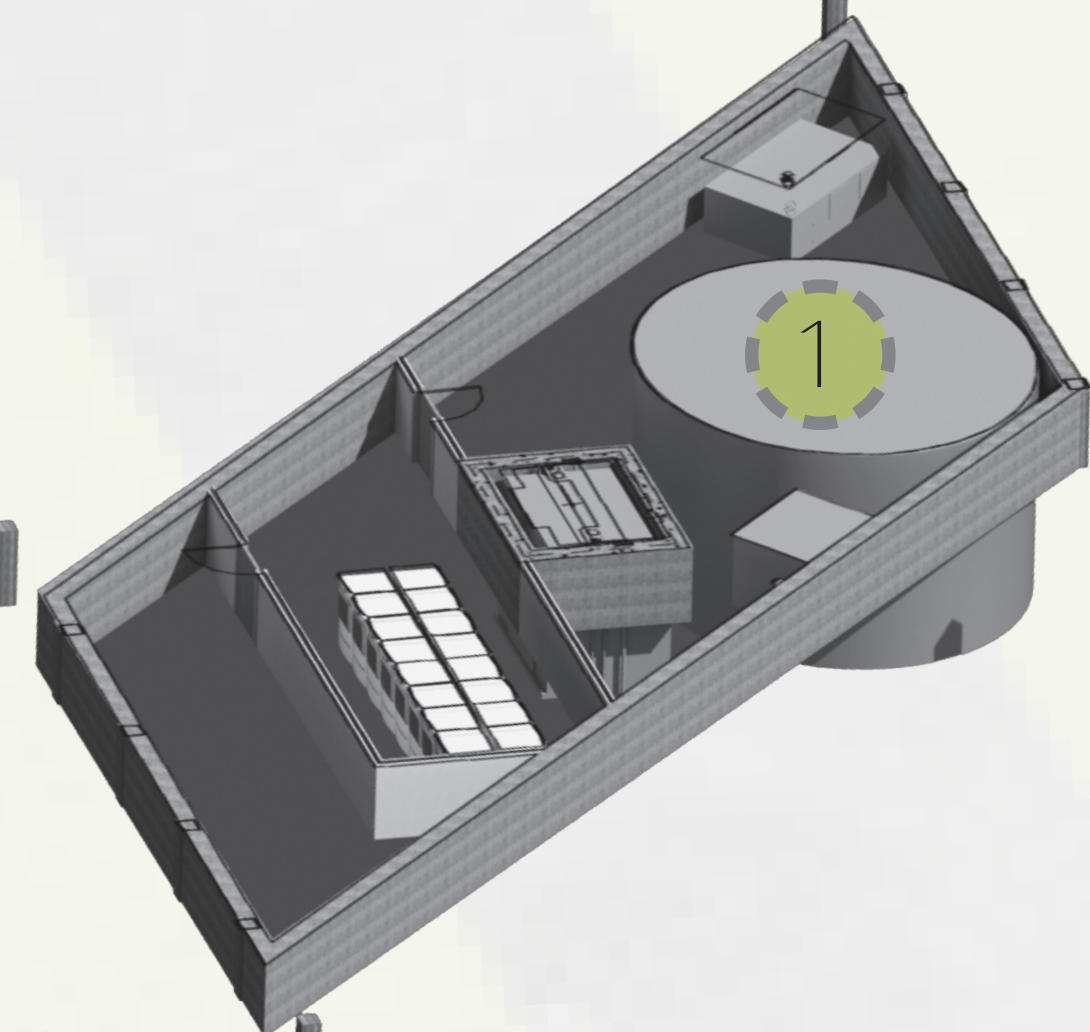


Exterior louvers are *offset* from the curtain wall to allow ambient light in even when closed. When open, the angles and size limit views from the ground.

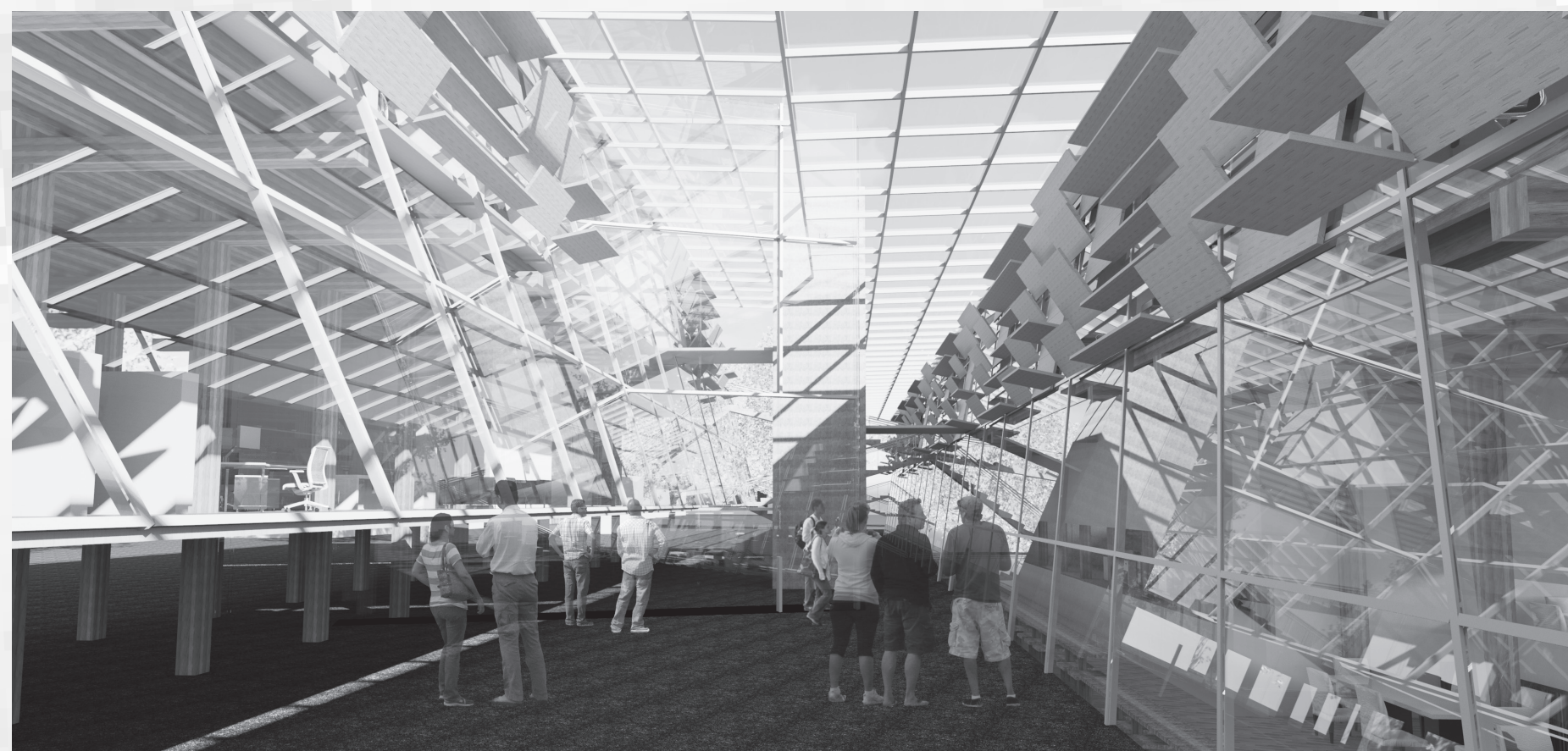
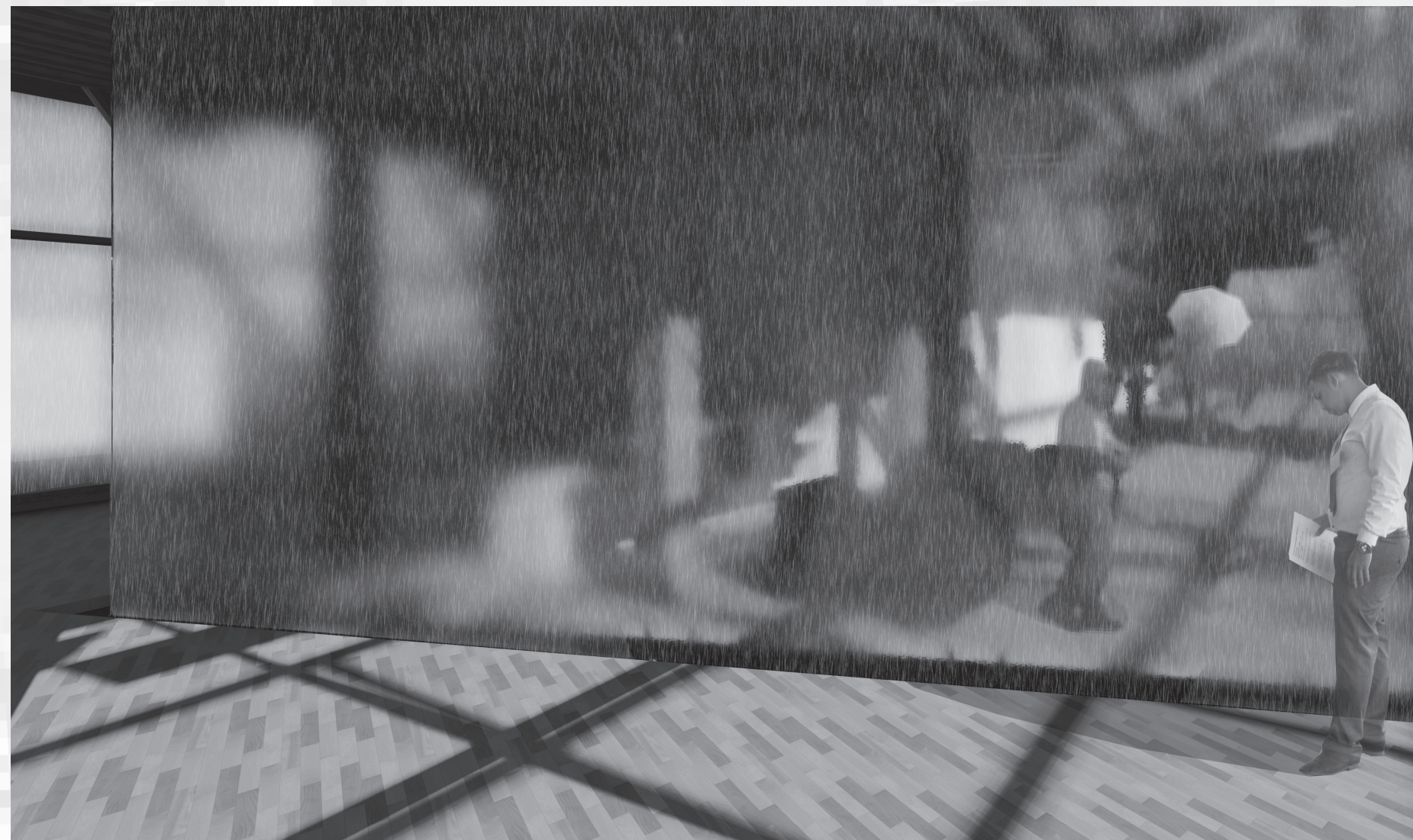
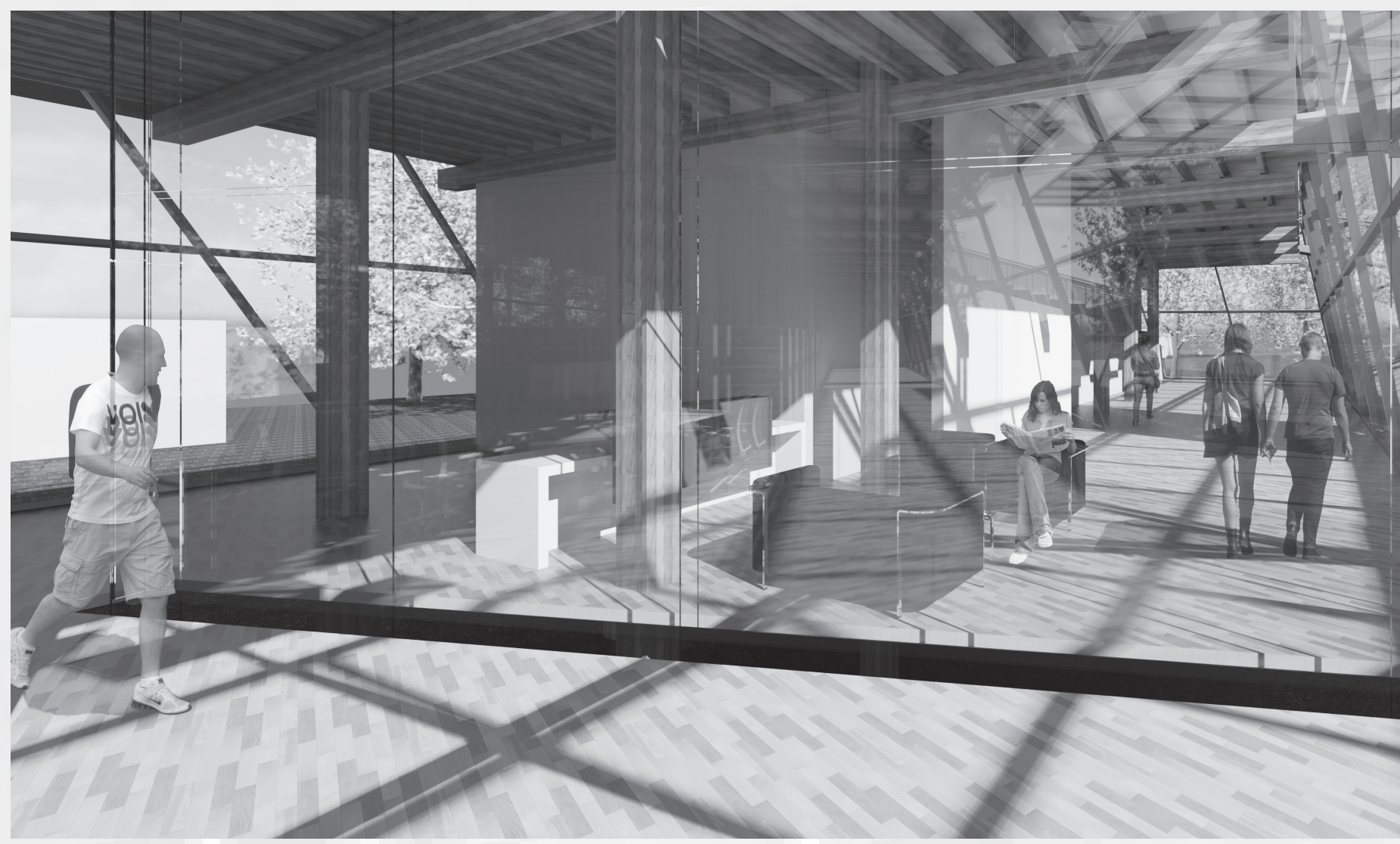


Views from dorm rooms create an opportunity to *bridge* from wing to wing.

Structure consists of a heavy timber post and beam system. Columns are kept towards the interior to preserve the *floating* feeling and as the floor plates offset, the columns allow for recognition of movement.



1. Mechanical Room
2. Dorm Entry and Office
3. Hall Director Apartment
4. Environmental Library
5. Retail Space / Campus Bookstore
6. Kitchen
7. Dining Center
8. Female Wing
9. Gathering Spaces
10. Male Wing



The rain wall functions as a connection to nature when it is or is not raining. The double glass curtain wall cuts through the floors and exterior wall to call attention to our relationships with the sky, the ground, and each other. The wall extends into the library space functioning as a checkpoint at the desk and out into the courtyard. These areas provide an opportunity to impede traffic and reveal a less romantic side of nature. When it is raining, the gradual butterfly roofs, and courtyard overhangs guide the rain into the wall, through the building, and into the water collection system, combining a technical approach while inviting an experience.

The offset of the heights creates an interaction between the wings and allows the stairs to connect each floor. In the Heideggerian sense, the bridge is a point of *creation* for the places it connects. (Heidegger, *Basic Writings*) Because of the distance between the wings, the stair's runners can be stretched to nearly triple the typical length. The tedious nature of climbing these stairs is reminiscent of *lifting* the artifact and draws attention to the floating nature of the stairs while pointing beyond itself.

