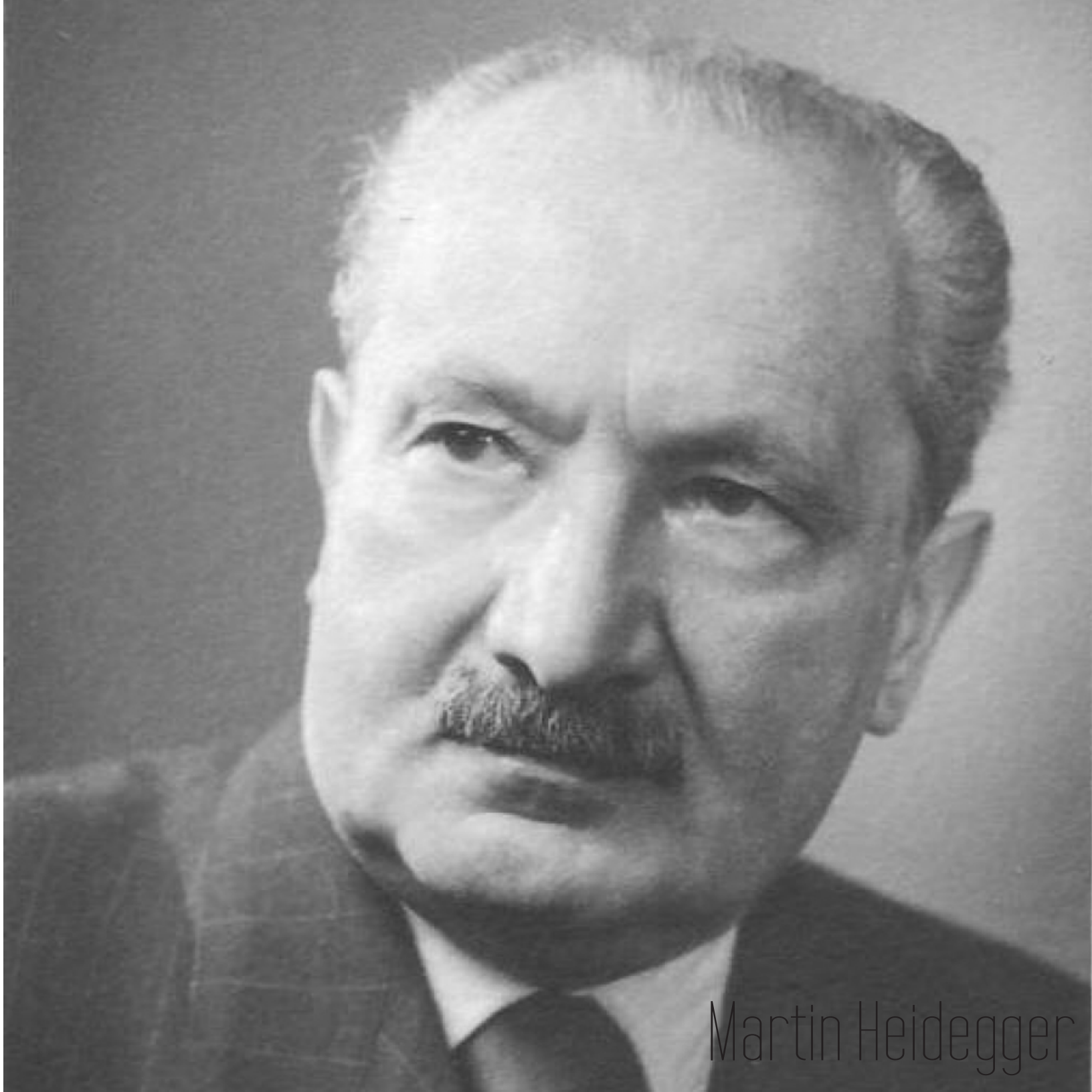


Bridging the Gap
Sustainability Through Techné
A Thesis By: Holly Burley

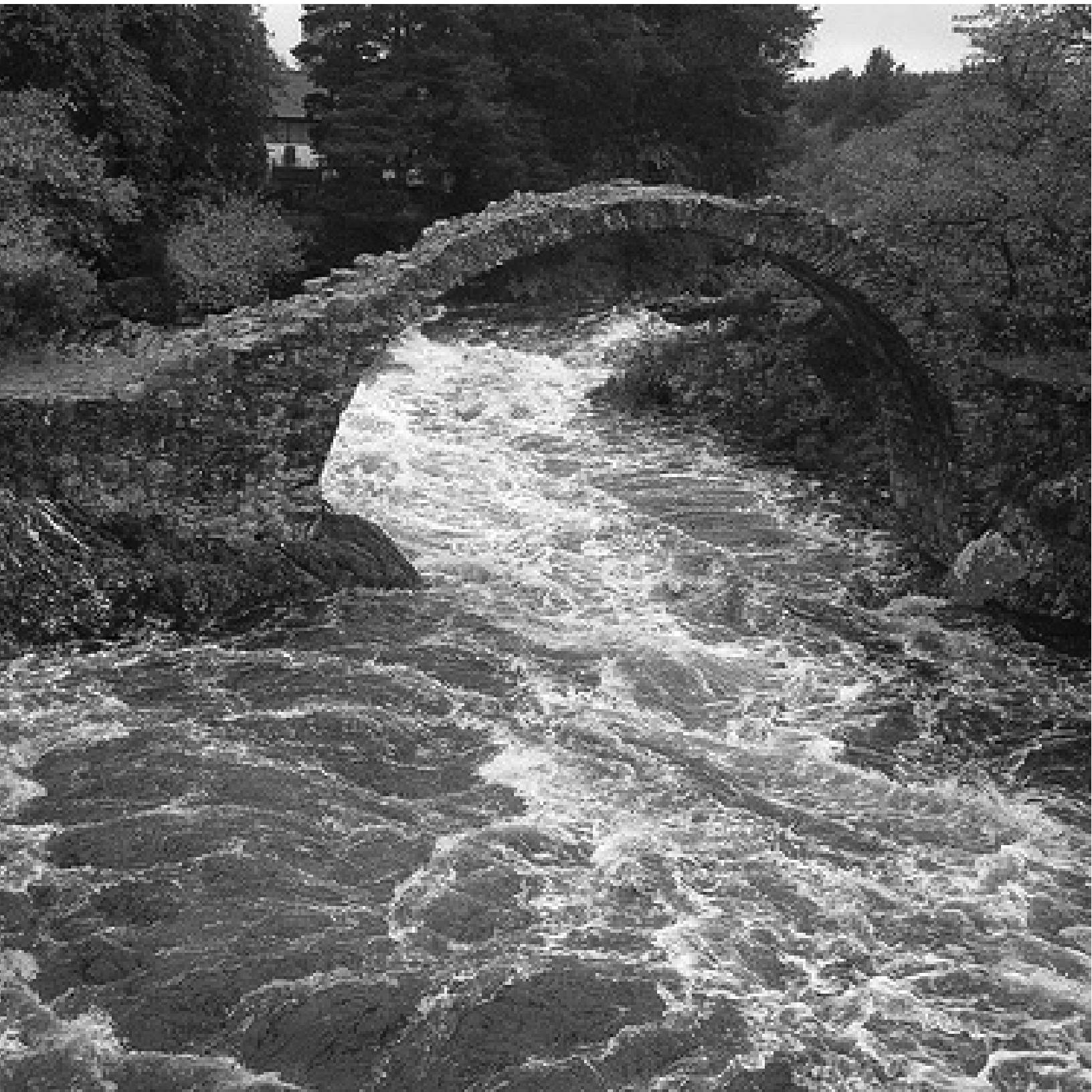
How can an architectural interaction
awaken a participant's responsibility
to a sustainable future?



Martin Heidegger

Bauen: To build, derived from baun
(to dwell), refers to a remaining,
caring , and preserving

“To be a human being means to be
on the earth as a mortal. It means
to dwell” -Martin Heidegger







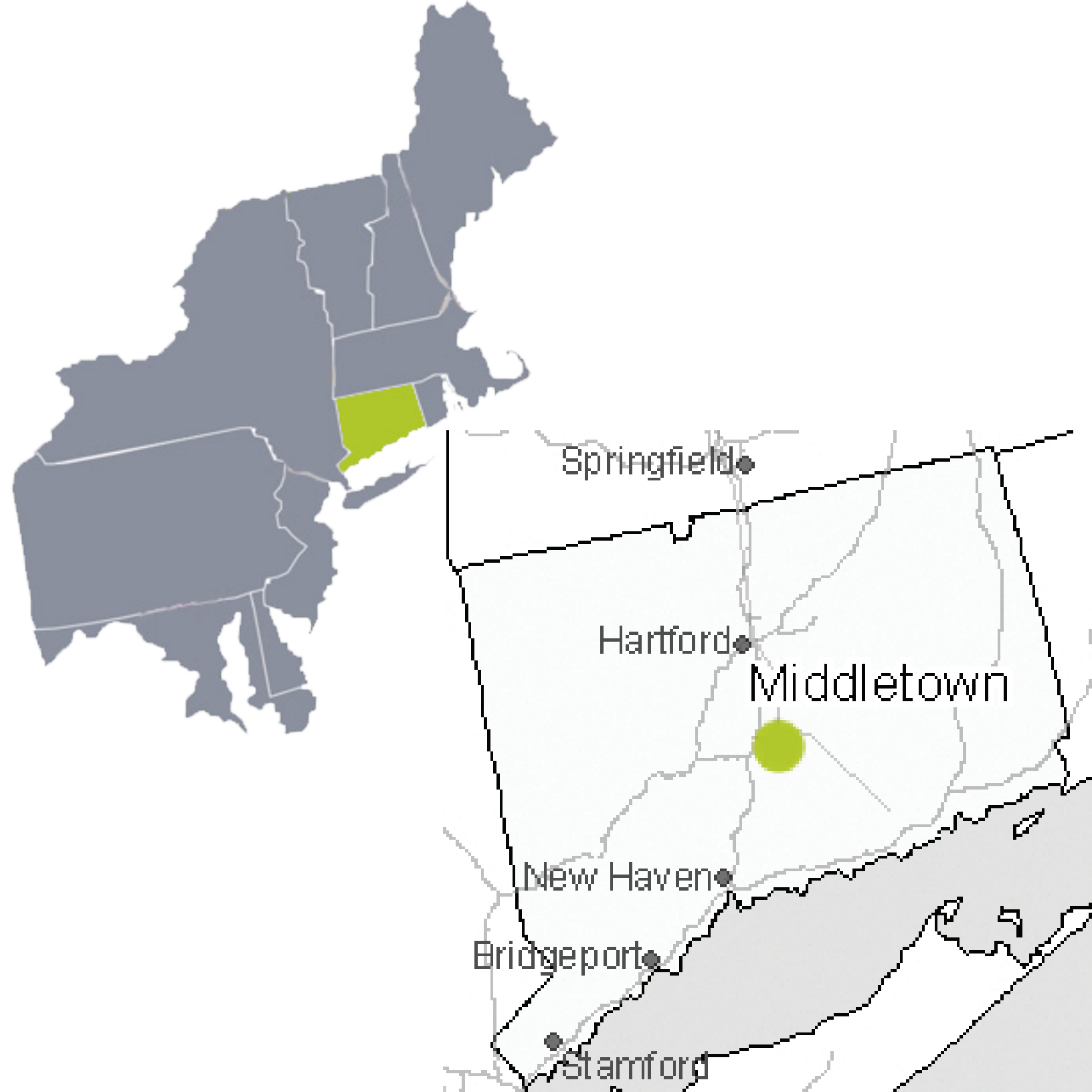
“(intervention must) be seen as a case of supporting those factors that help sustain equilibrium” -Hans Geog Gadamer





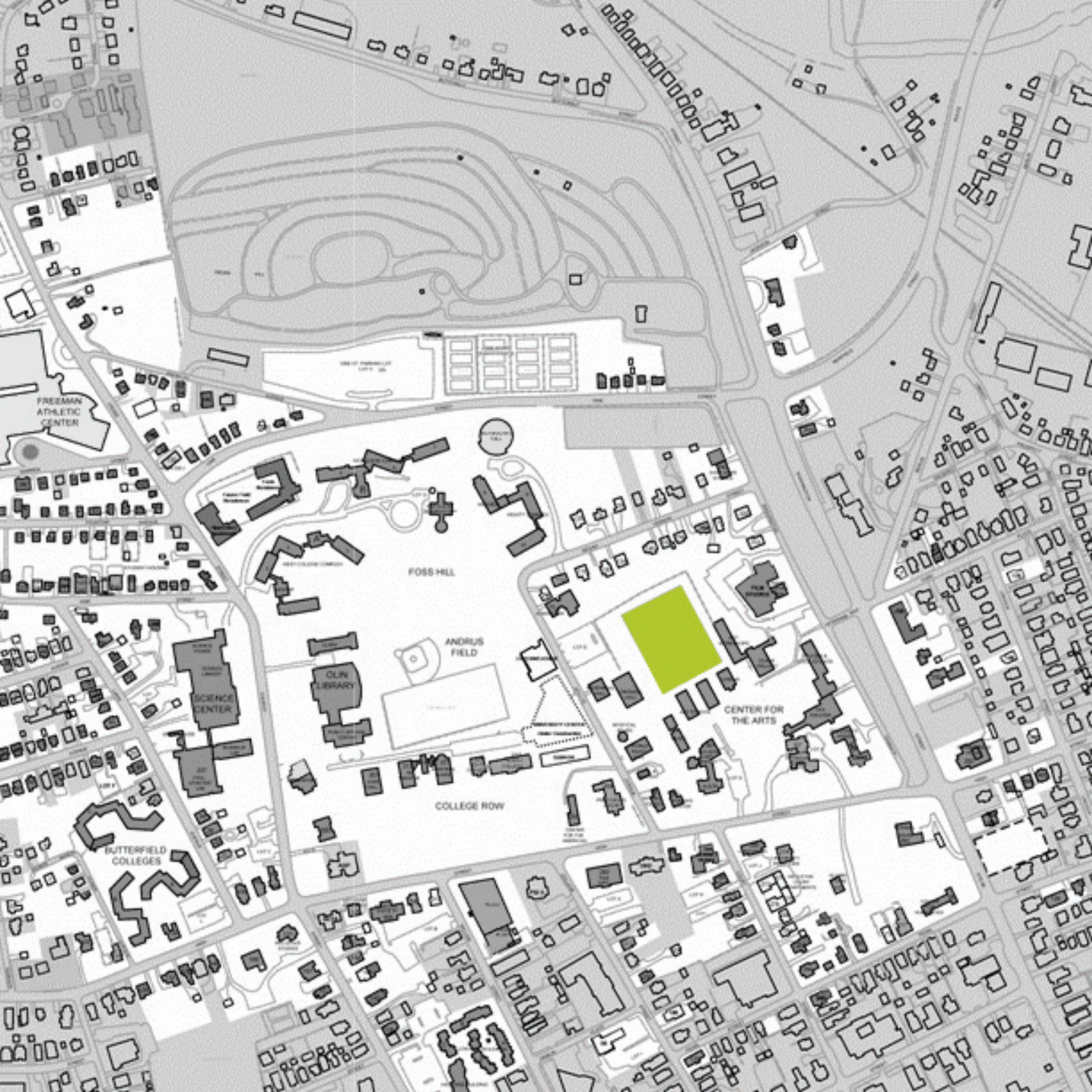








Fountain Ave
Middletown, CT



FREEMAN ATHLETIC CENTER

FOSS HILL

ANDRUS FIELD

SCIENCE CENTER

OLD LIBRARY

CENTER FOR THE ARTS

BUTTERFIELD COLLEGES

COLLEGE ROW



FREEMAN
ATHLETIC
CENTER

FOSS HILL

ANDRUS
FIELD

SCIENCE
CENTER

OLIN
LIBRARY

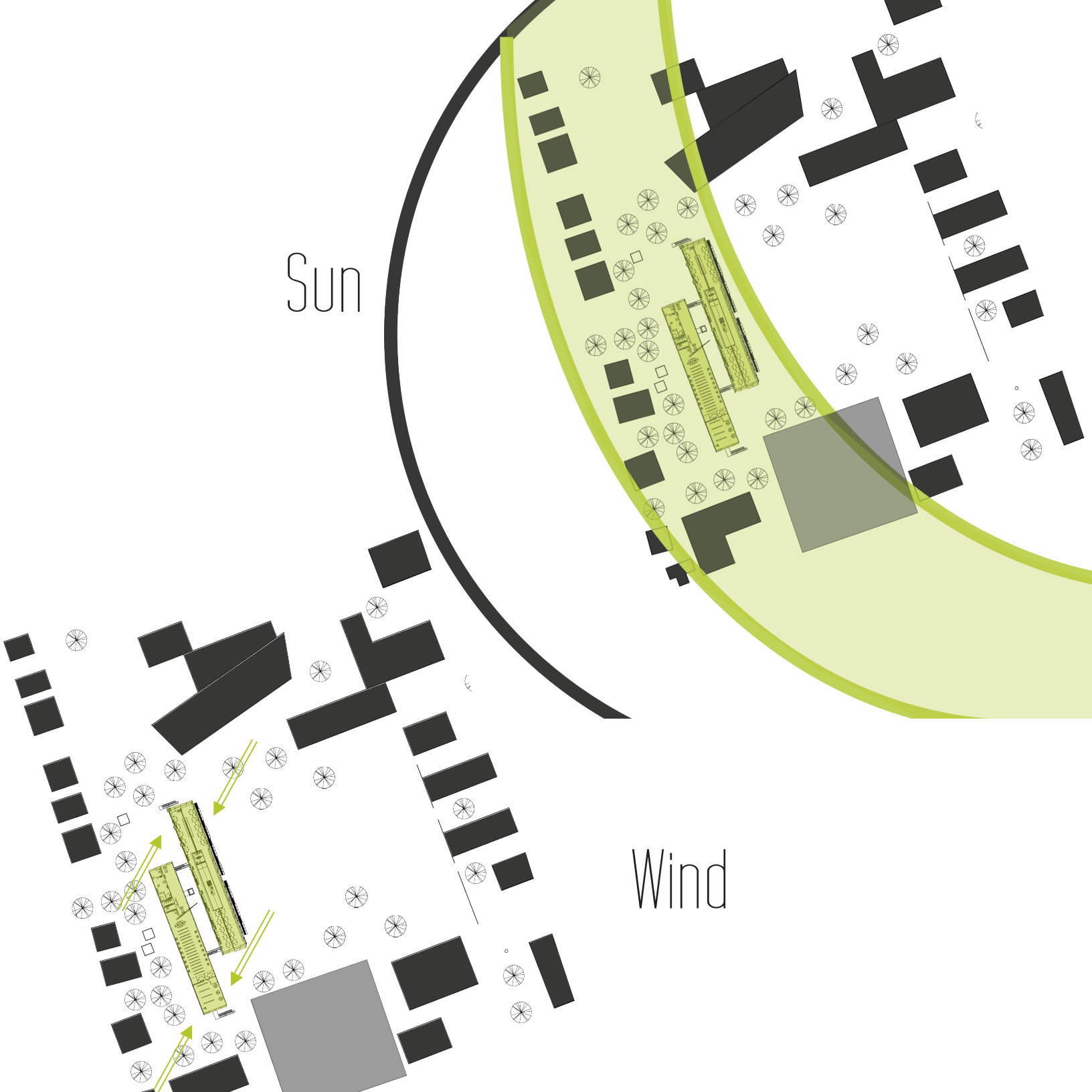
CENTER FOR
THE ARTS

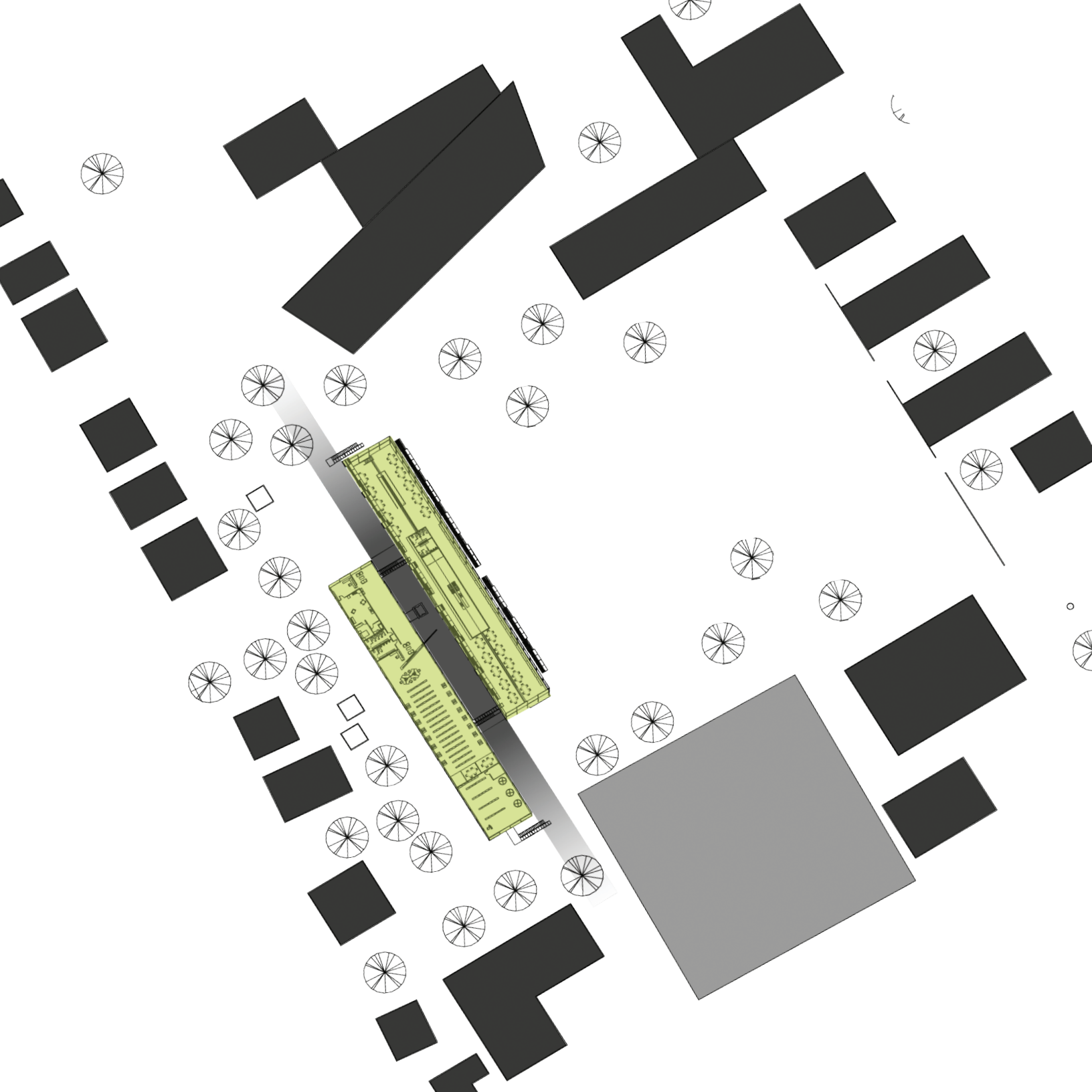
COLLEGE ROW

BUTTERFIELD
COLLEGES

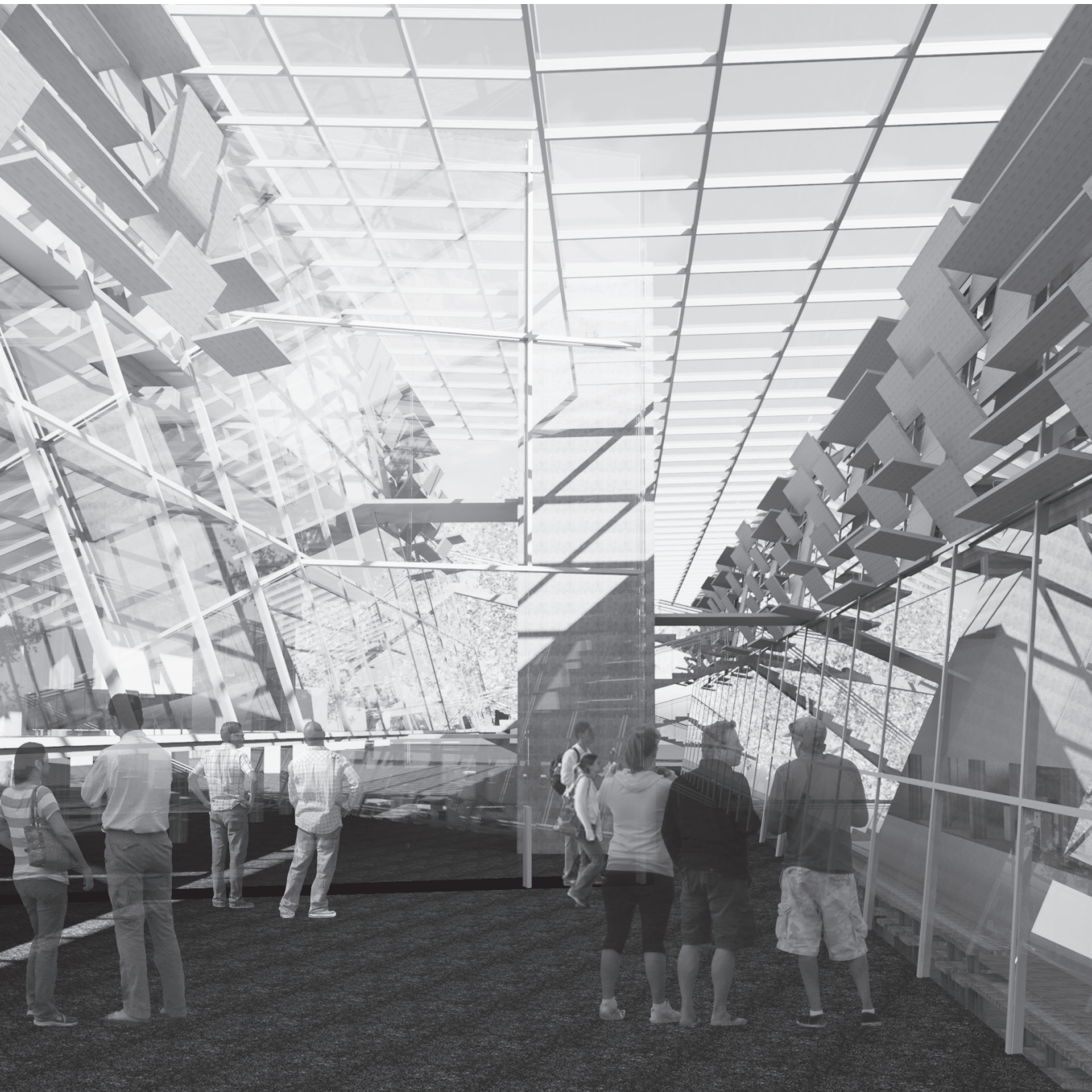
Sun

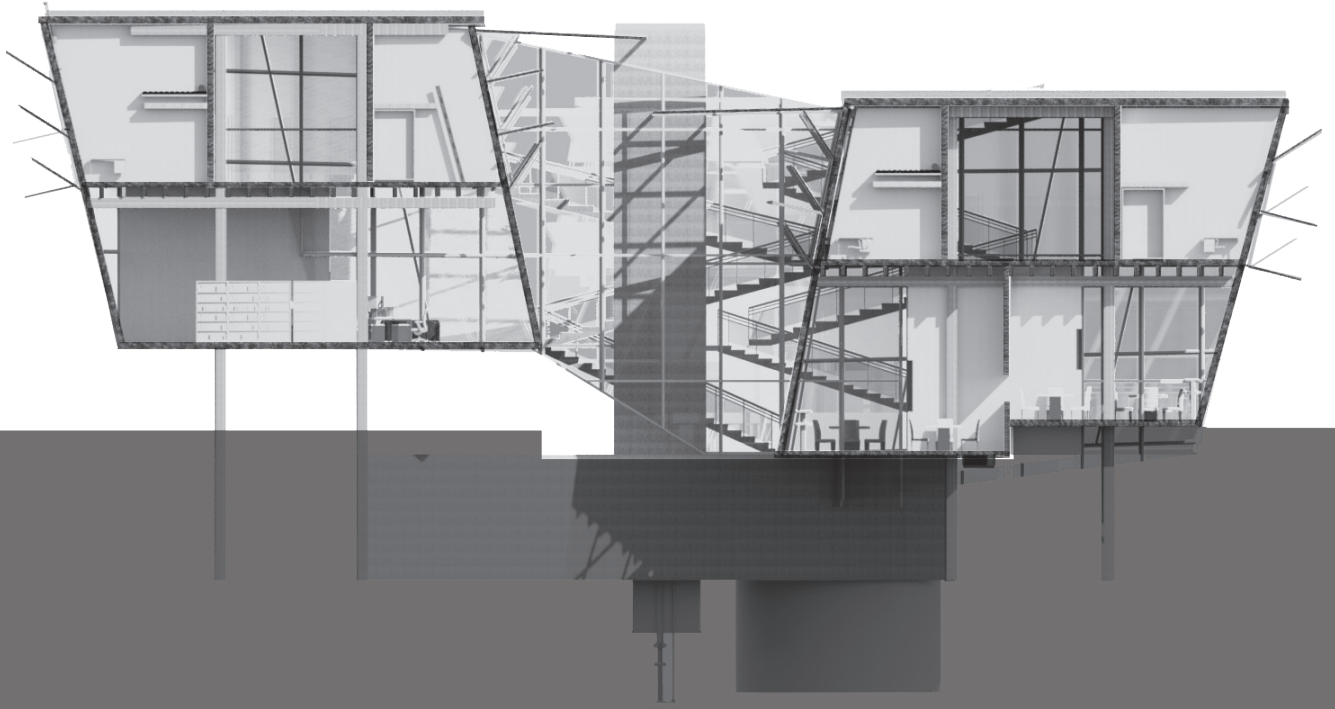
Wind

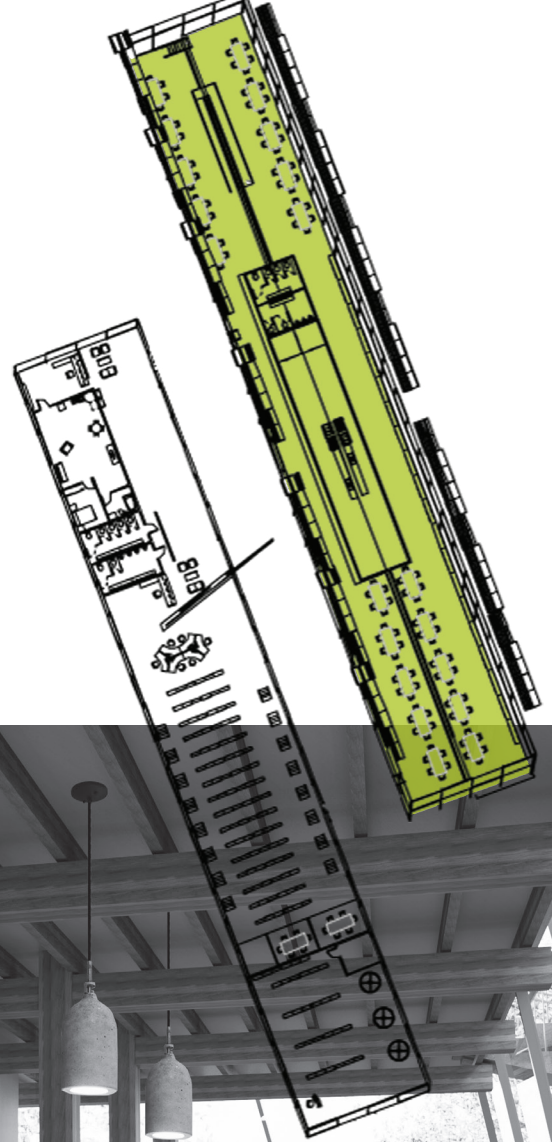




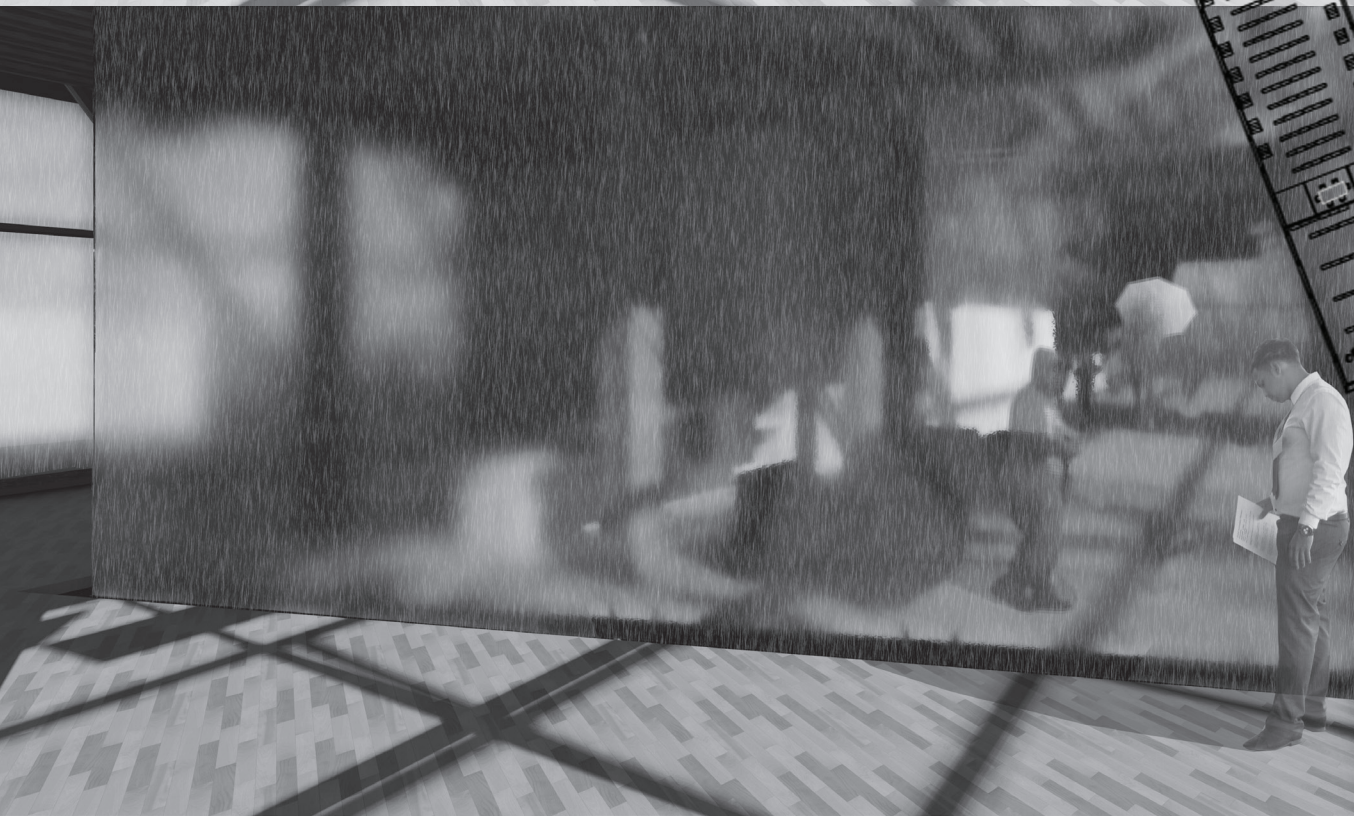
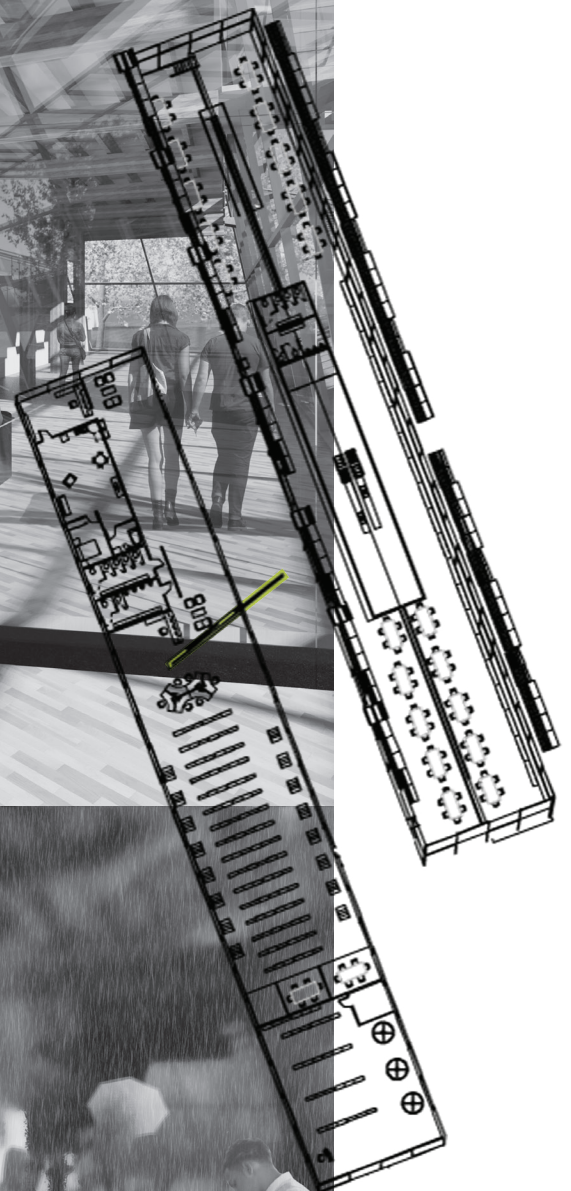
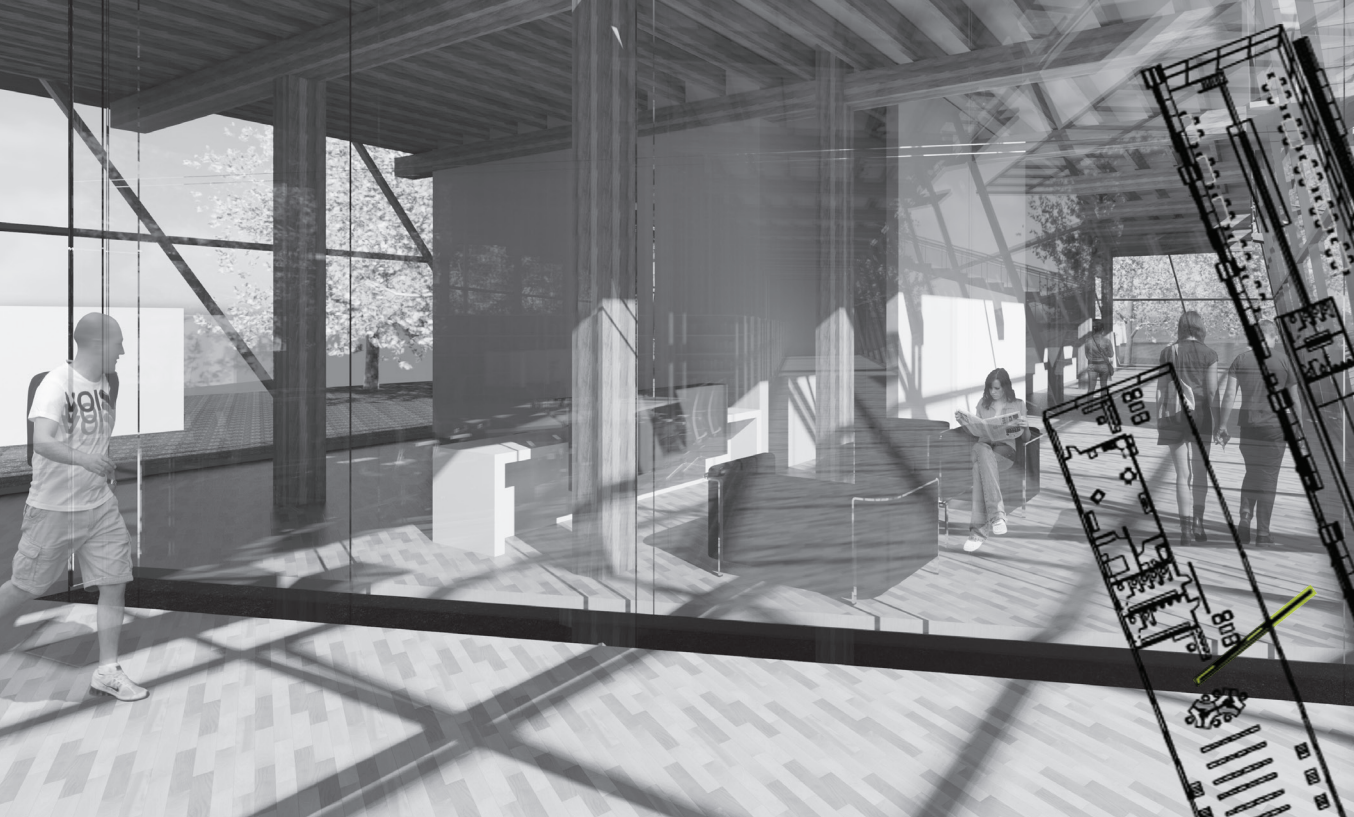


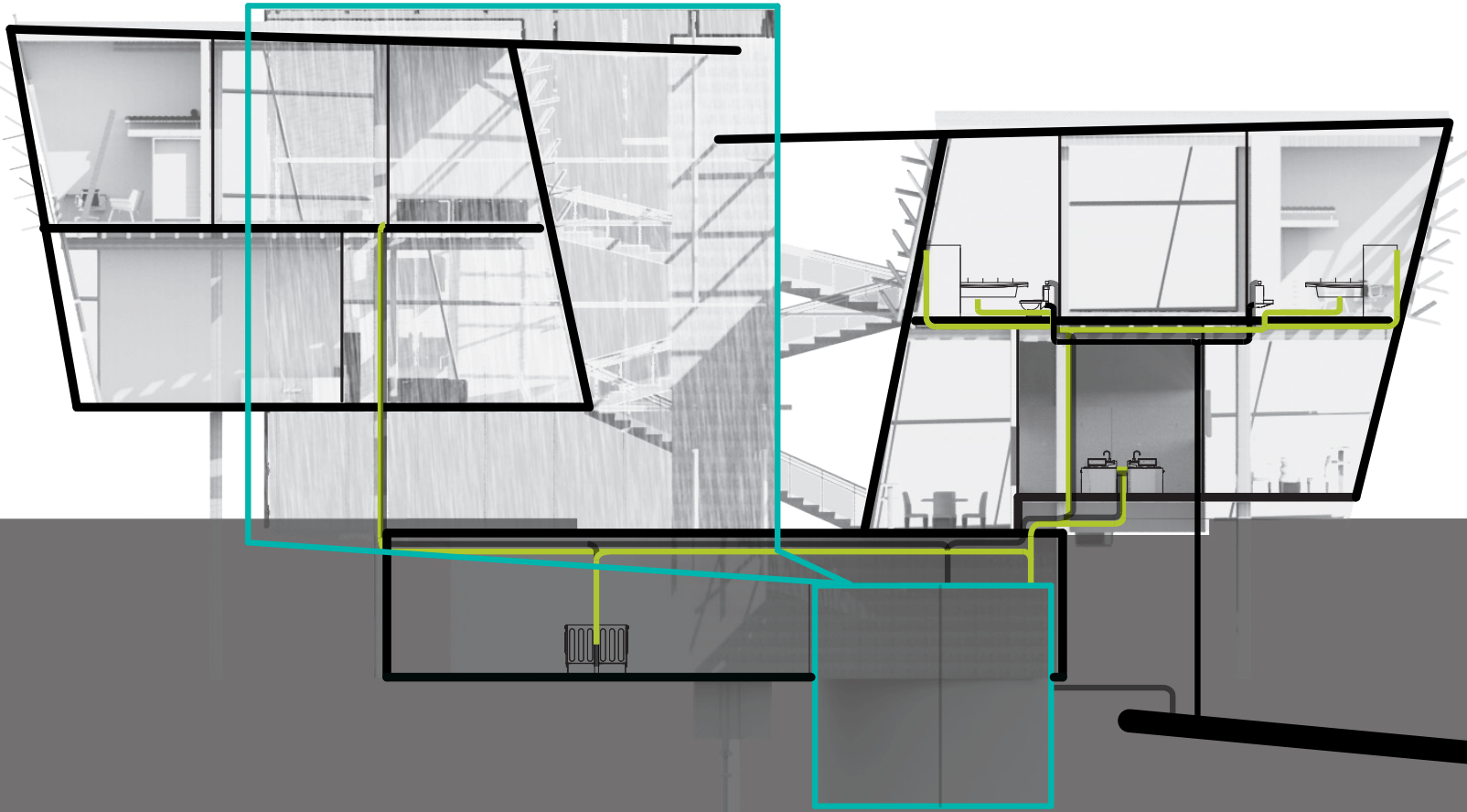


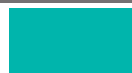







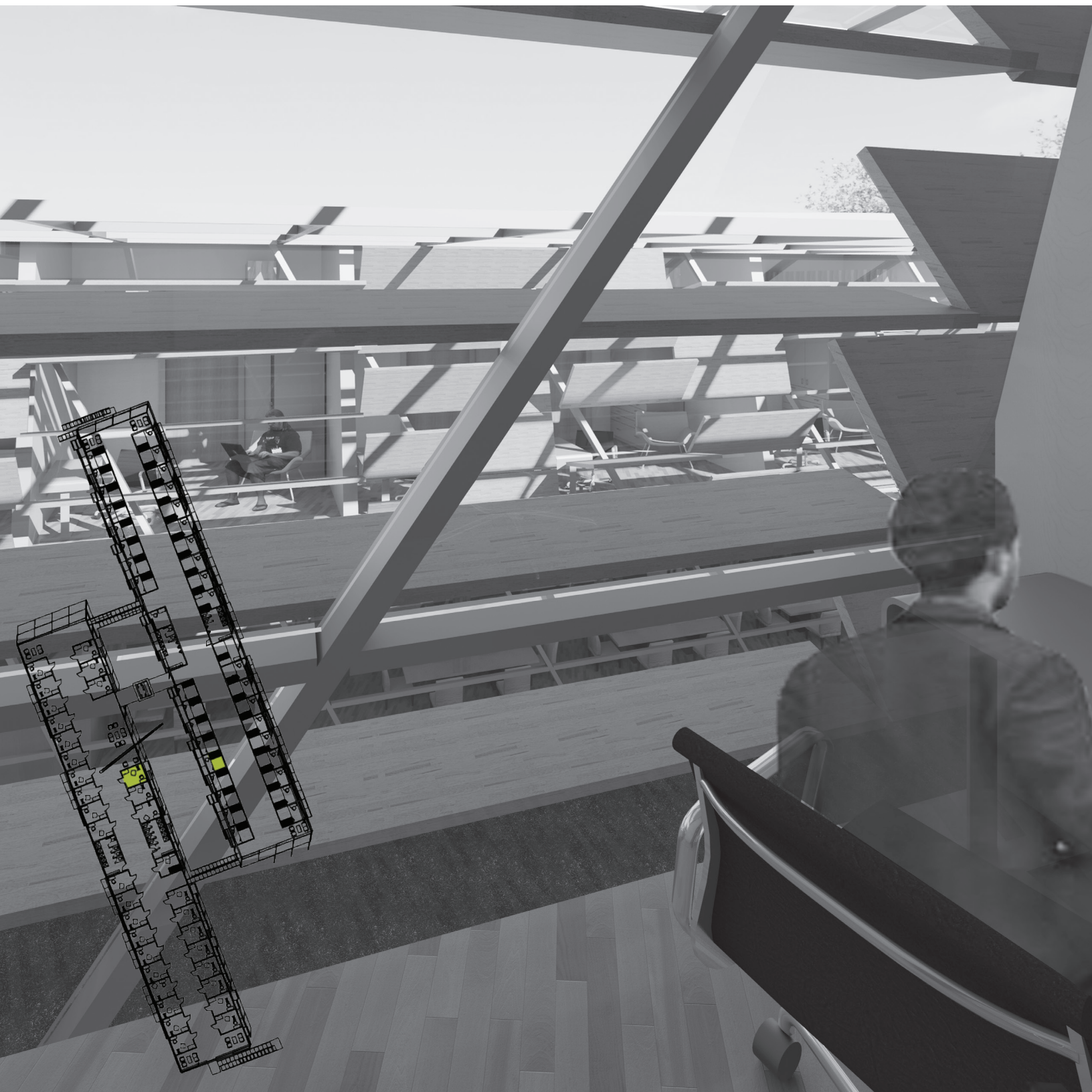


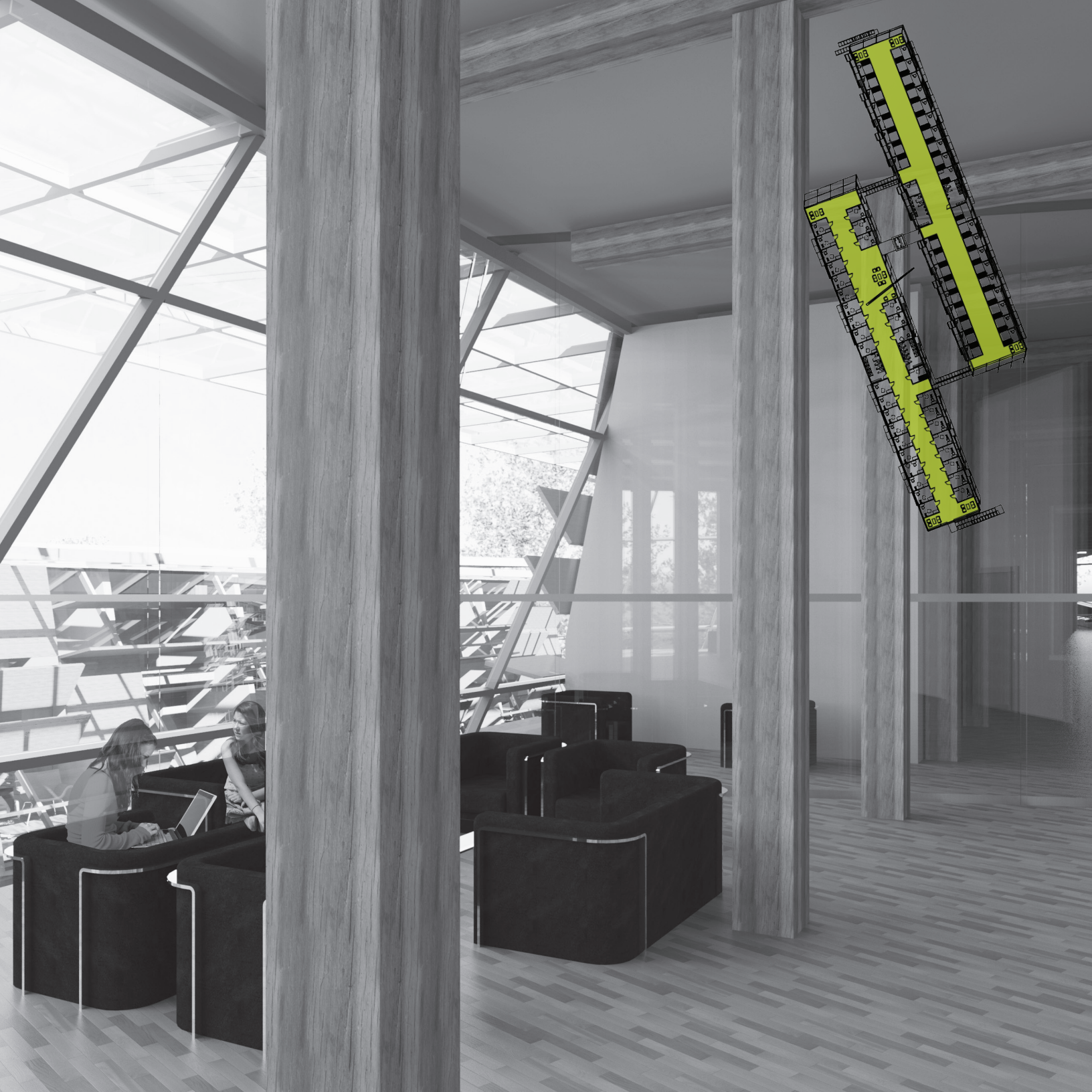




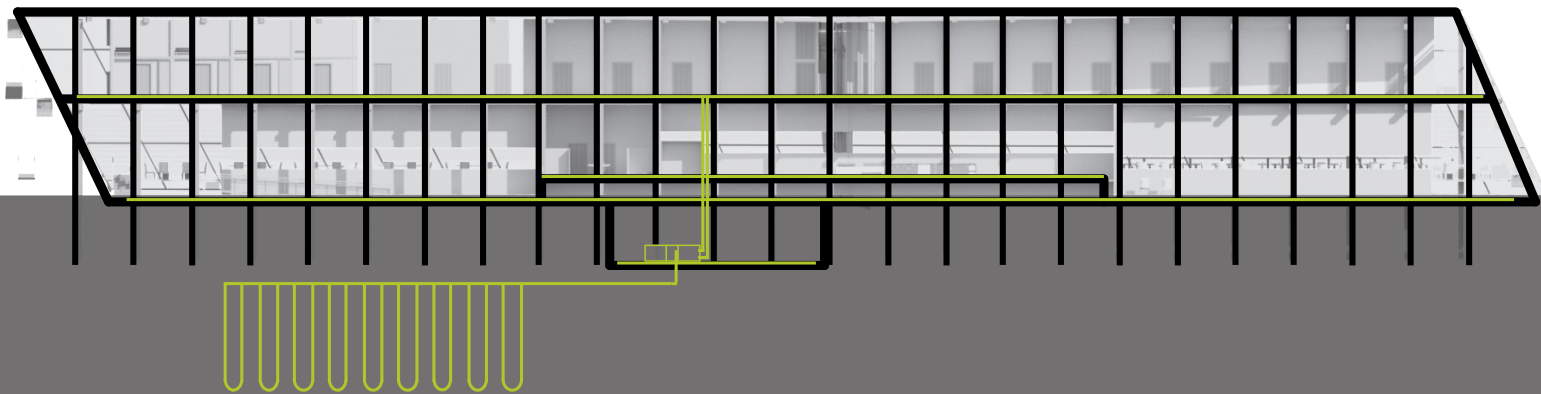
-  Water collection and filtration
-  Water to be filtered for reuse
-  Filtered gray water
-  Water to sewer



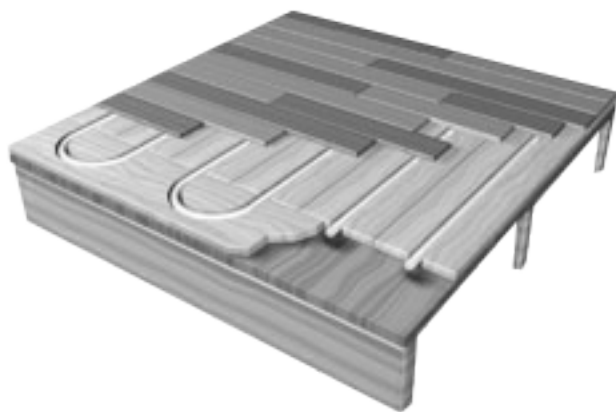








■ Geothermal and radiant heating and cooling system



EC Series 120 242 Horizontal units - Dual supply

30,000 sqft roof space

50 in average rainfall per year

Possible collection: 841,500 gallons/year

16,763 gallons/inch of rainfall

77 people in building

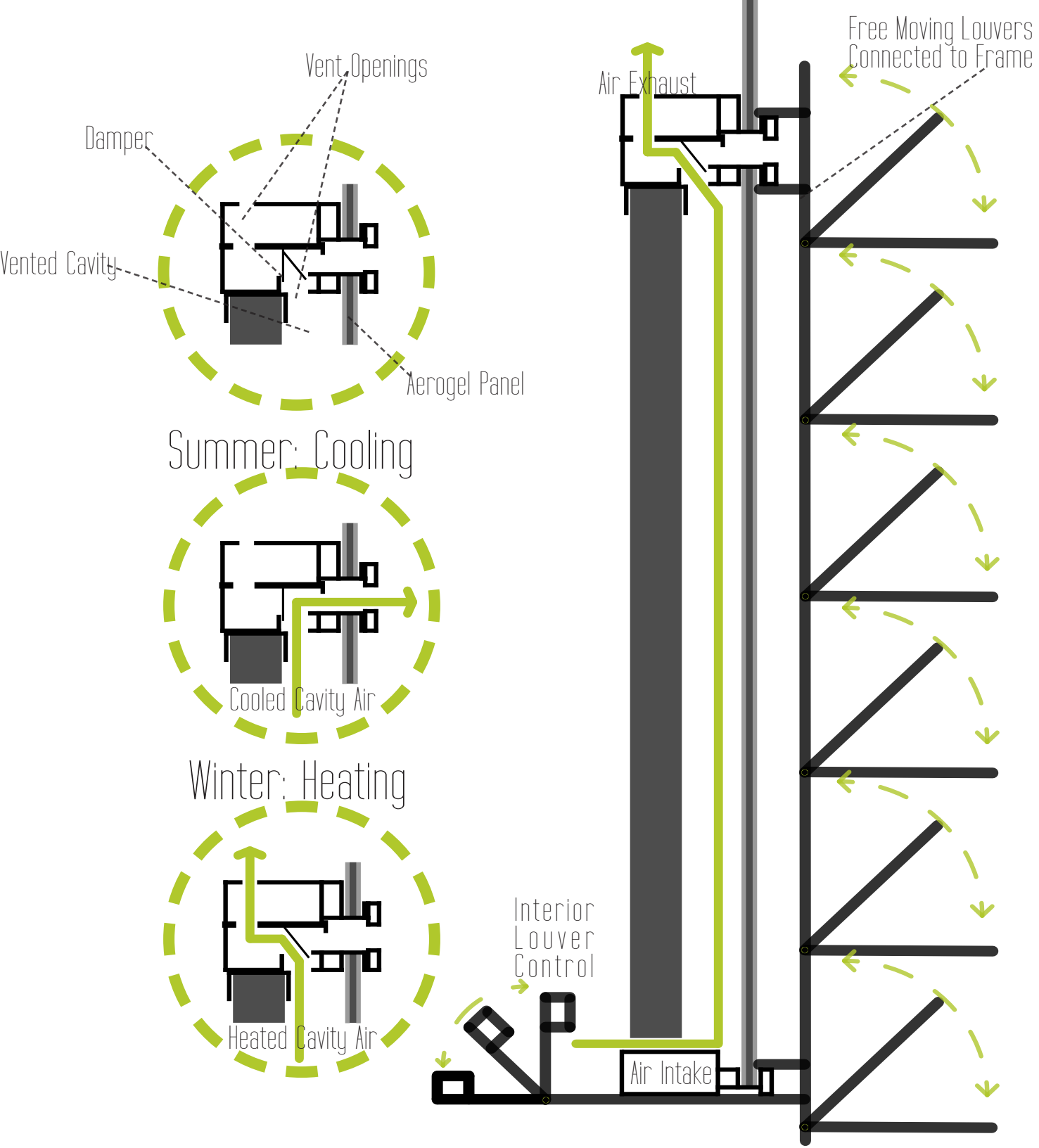
60 loads of laundry in front load washing machines

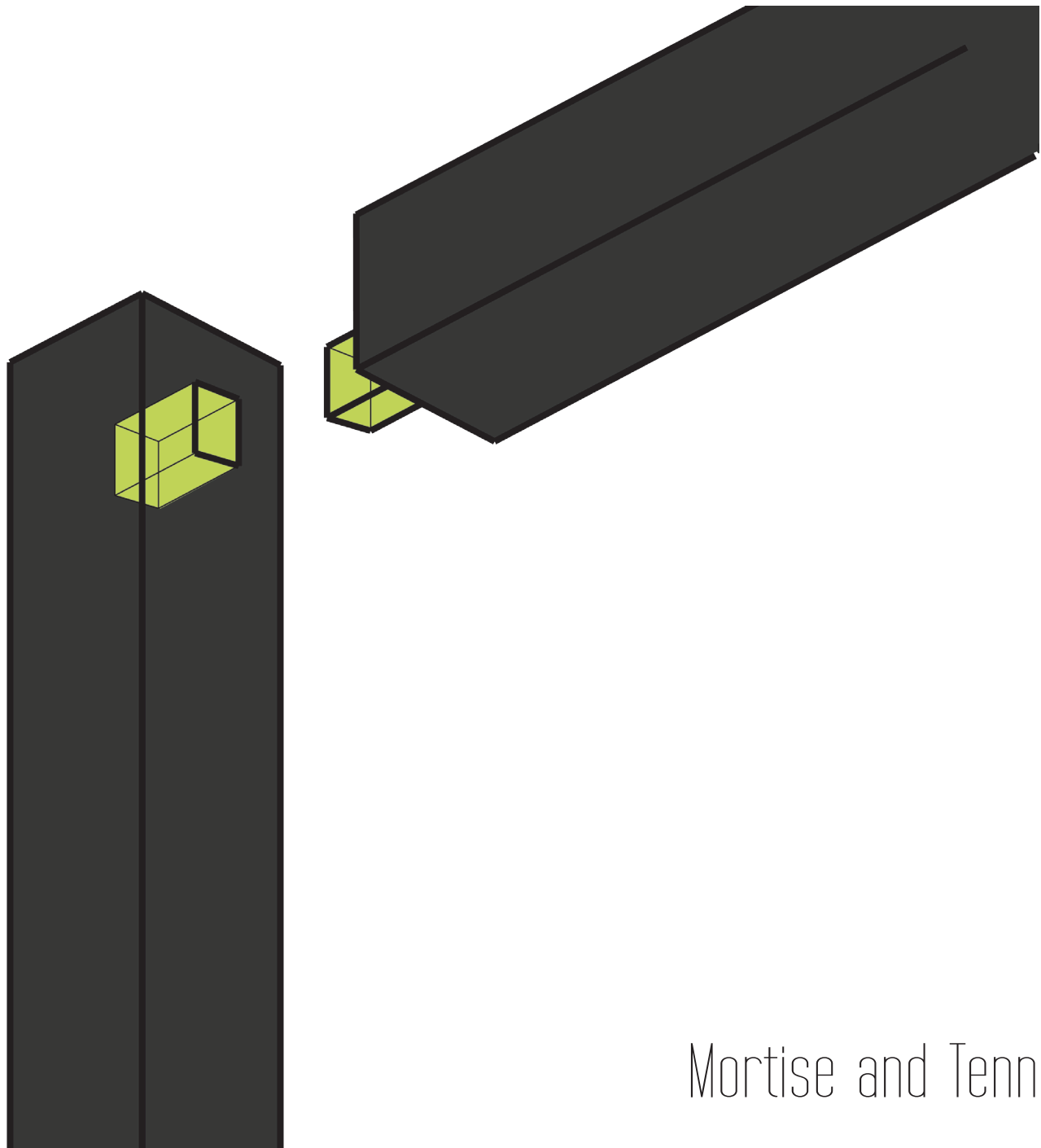
6 average showers/week/person

10 minutes average water run time/person

1 industrial kitchen

Average usage: 80,000 gallons/month





Mortise and Tennon

