

A high-contrast, black and white photograph of a person's hands. The hands are positioned in the center, with the left hand holding a lit cigarette. The skin appears wrinkled and textured, suggesting age or a specific environment. The lighting is dramatic, highlighting the contours of the fingers and the texture of the skin against a dark background. The overall mood is somber and contemplative.

CRADLE FOR CHANGE

Finding the space between home and homelessness



The homeless dwell in a space between Nomadism and Modern Living. They dwell a space of experience, linked to a certain place of active engagement and forced solitude. Their struggle viewed as a nuisance to polite society, they grasp for a foothold where there is none.



The modern homeless shelter
Cramped Spaces
No Privacy
No Security



Most homeless chose the streets
over these conditions.



Spring Gardens provides an environment similar to a hostel, where homeless may go to learn but are free to leave whenever they feel ready.



The Bridge treats mental illness and addiction in long term supportive housing situations.

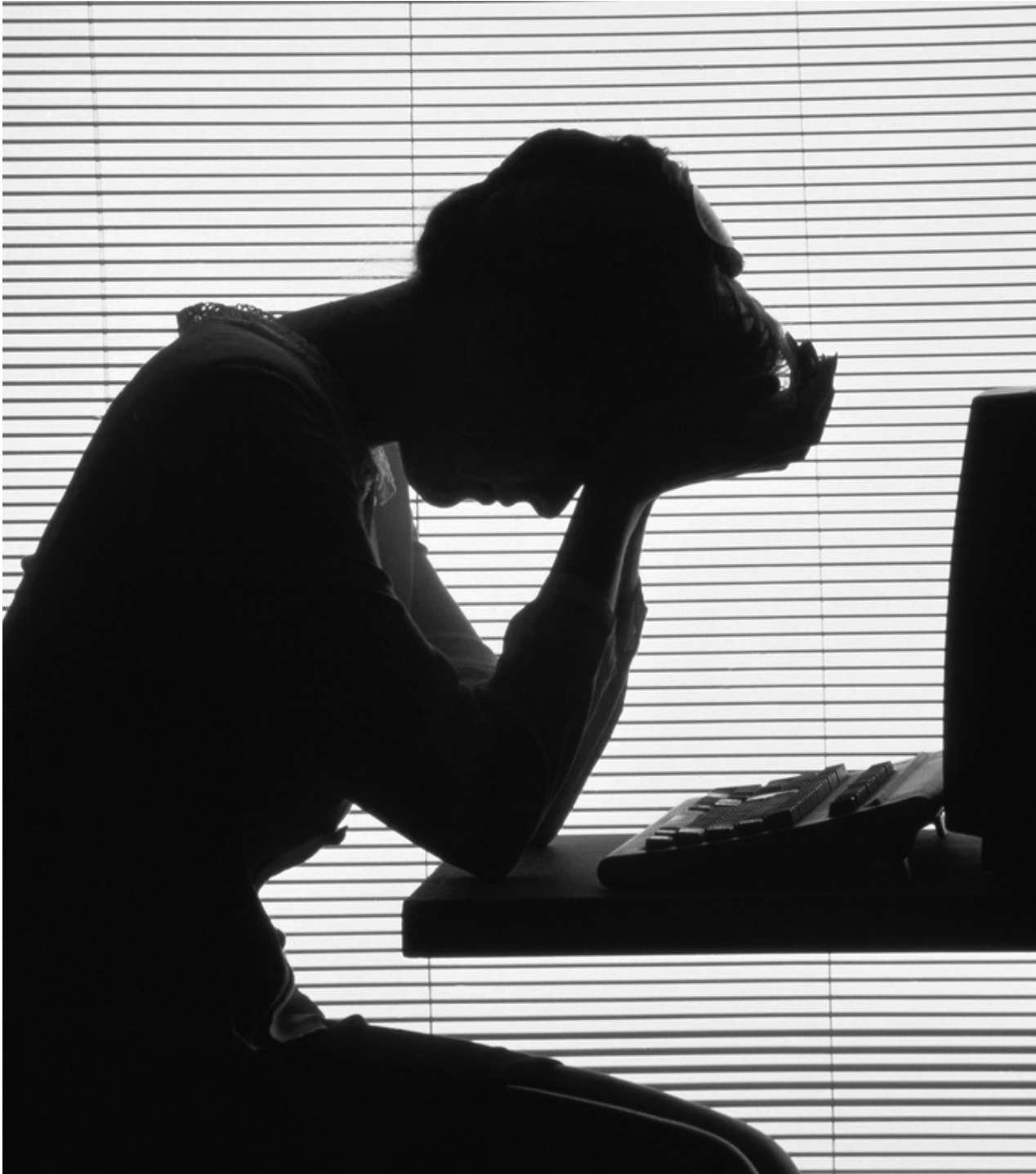






This lack of care for the homeless can be made extremely clear in the difference in treatment of the pristinely maintained gravestones of the veterans who lost their lives in battle and those who had the misfortune of remaining alive only to be unable to reintegrate into society.





How can one stimulate emotional and social well-being within a design?



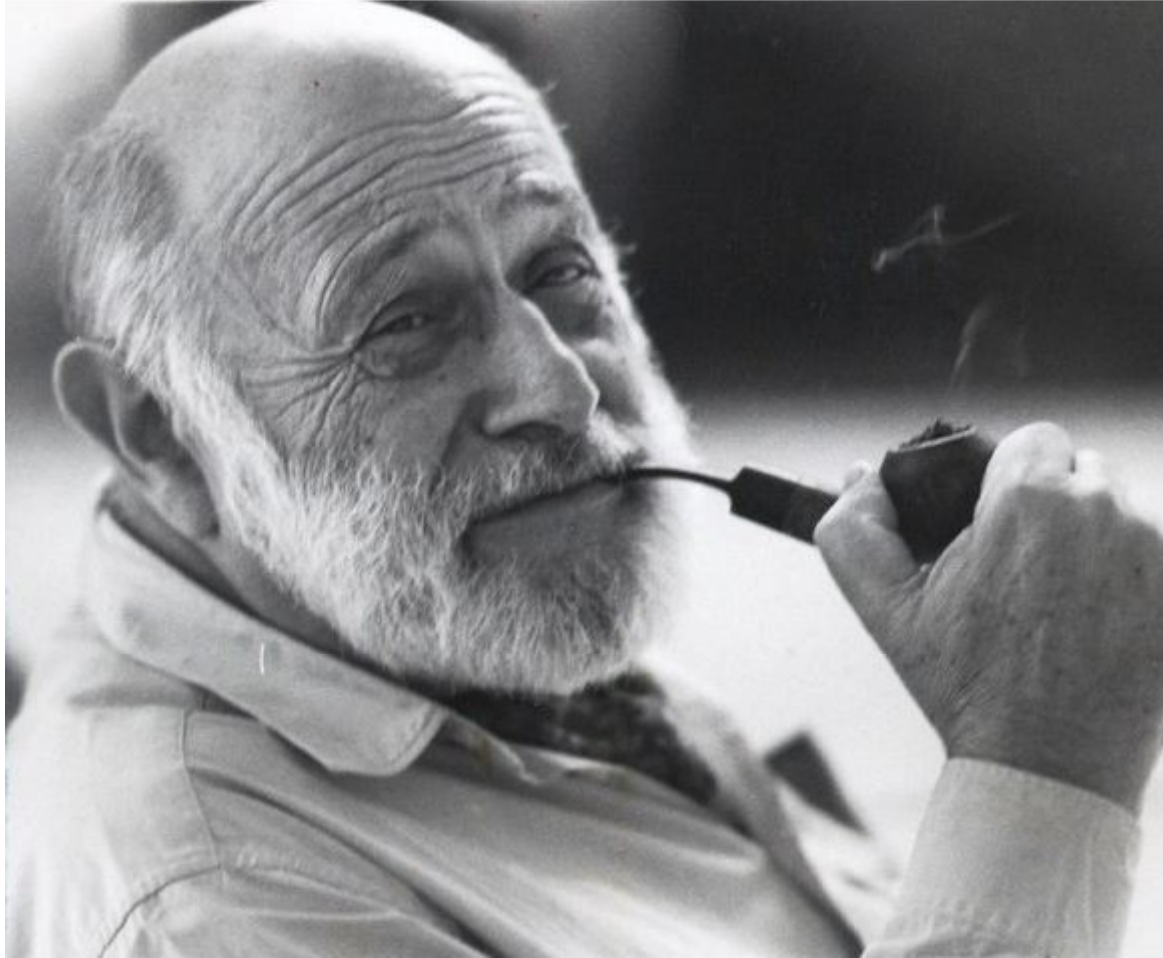
Martin Heidegger

“In today’s housing shortage even this much is reassuring and to the good; residential buildings do indeed provide shelter; today’s houses may even be well planned, easy to keep, attractively cheap, open to air, light and sun, but – do the houses in themselves hold any guarantee that *dwelling* occurs?”

What is the nature of Dwelling?

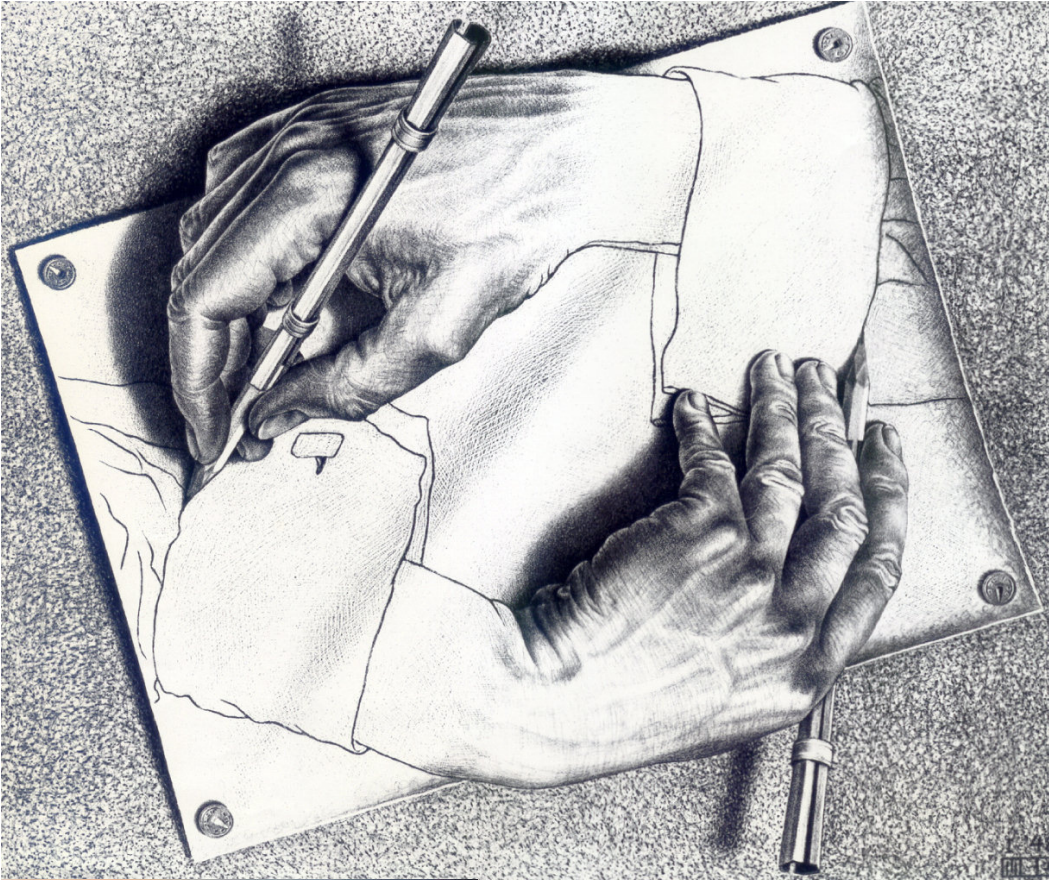
What is the nature of Dwelling?

Is it not true that spaces are bound by experience?



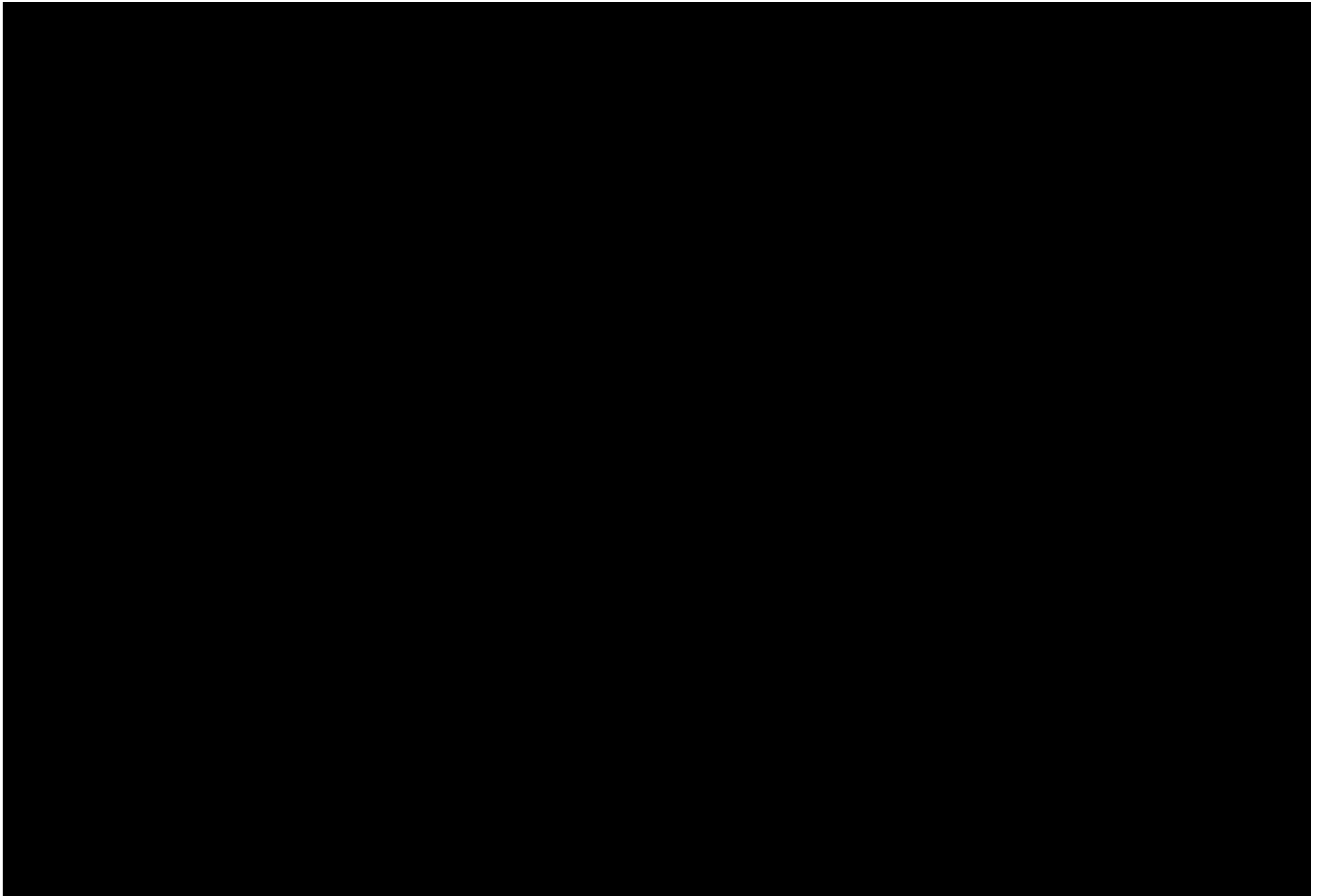
Vilem Flusser

Flusser, a refugee during WWII, found many homes after being removed from his first, and through engagement with the different cultures, different homes, he felt less pain with each separation and each new home *modified* his concept of home.

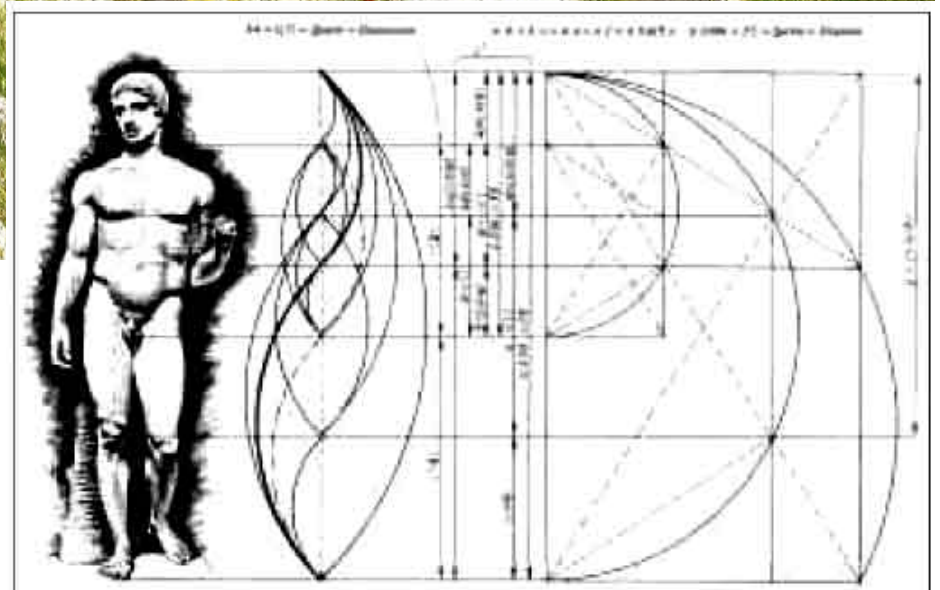
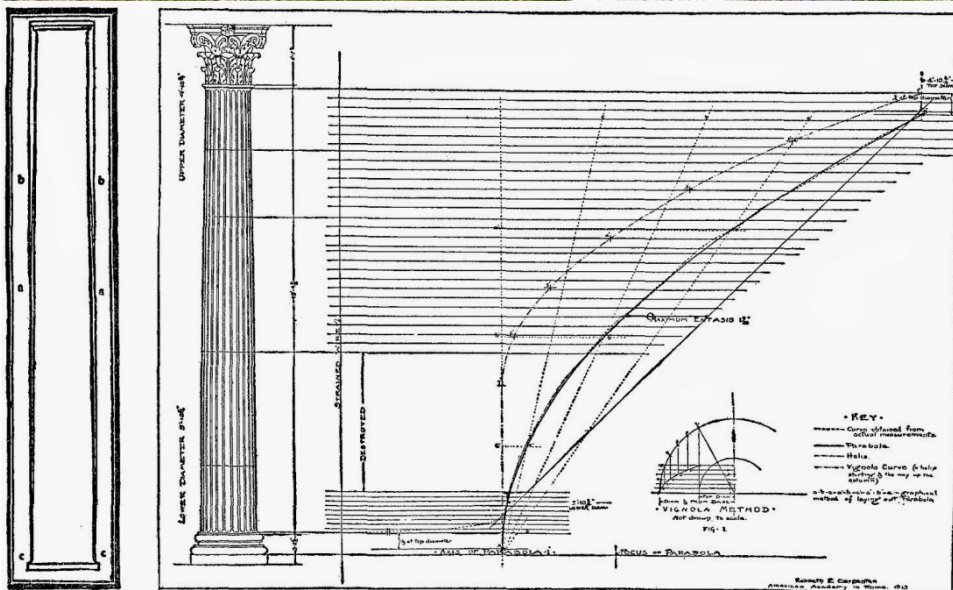


Are we truly looking for what it means to *be* in our search for the nature of *dwelling*? Does how we move the world around us define who we are?











“Philosophy abandoned the Ding an Sich, and thus the search to discover the way things really are, and limited itself to formal statements of pure logic, pure mathematics and pure grammar or to the discussion about Existence, to the exclusion of Being as such.” Flusser, The Shape of Things

Ding an Sich or Thing-in-Itself is a term relating to the experience of an object in reality through the act of not knowing, by not sensing the object, but by relating to the experience of the object within space and time. In other words, the object itself is transformed based upon how it is experienced differently depending on its situation in reality.

“The risk for man is to be uprooted not only from his reality, from his world, but also from himself. If we think meditatively, however, we allow ourselves to be aware of the risk implied in the technological age and its usefulness, and we can hence act upon it.” Heidegger on Gelassenheit.

Does modern society's need for efficiency and longing to be entertained; without need for active engagement and without thought actually remove the essence of dwelling from modern society?

Does this lack of dwelling mean that modern society is truly "taking up residence in homelessness" through our disregard for active participation within design?



How does one create a sense of dwelling in the nomadic, experiential sense within the modern city?

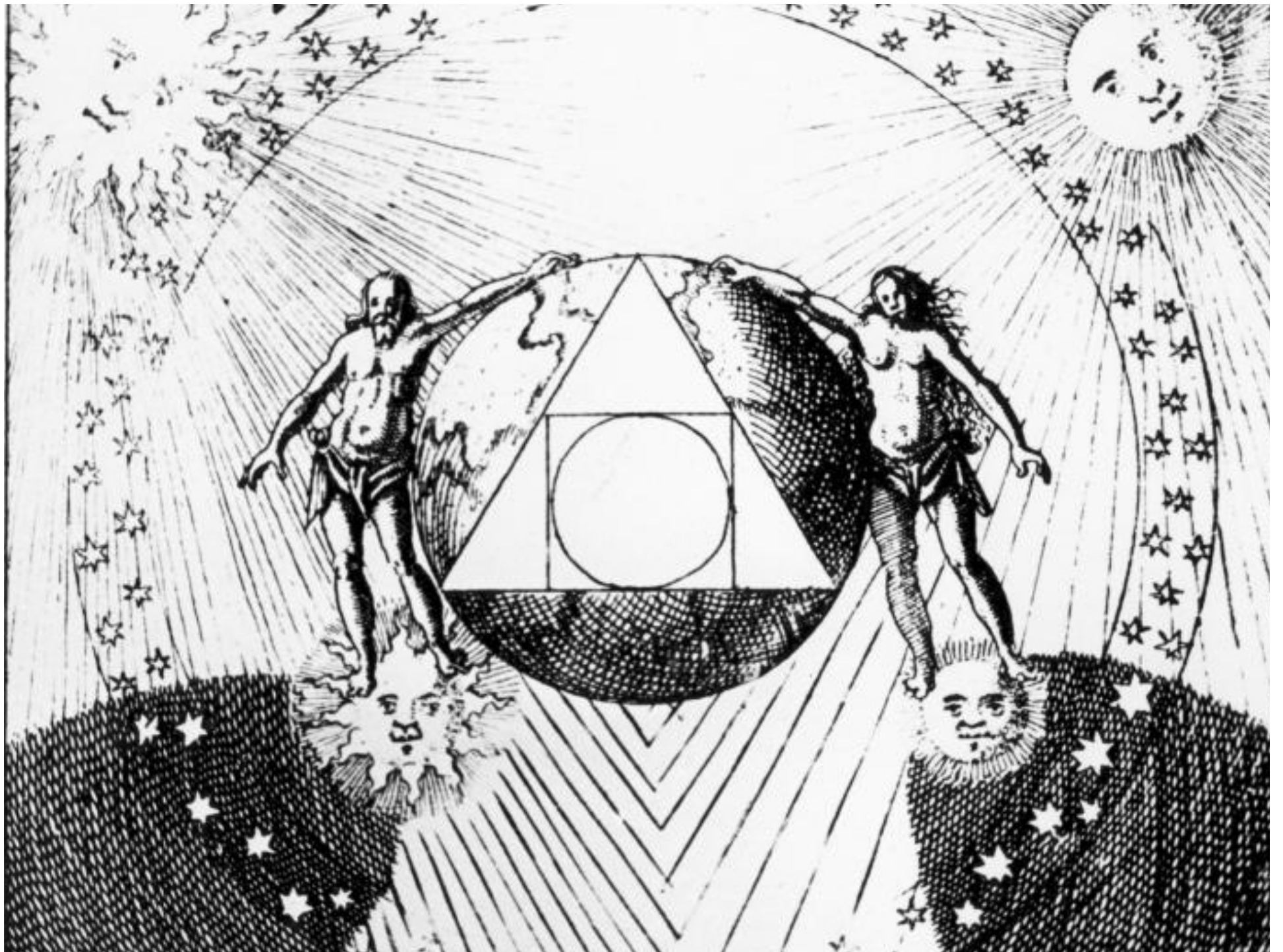




Nomadism was once the primary method of living for the human population, whether it be pastoral, hunter-gatherer, or trade-based nomadic cultures.

However, modern society has moved to marginalize the lifestyles of nomadic cultures, including the homeless.

My design aims to square the circle, or find the space between, nomadic and settled cultures, the homeless and society.



My design must:

Engage the ephemerality of nomadism

My design must:

Engage the ephemerality of nomadism

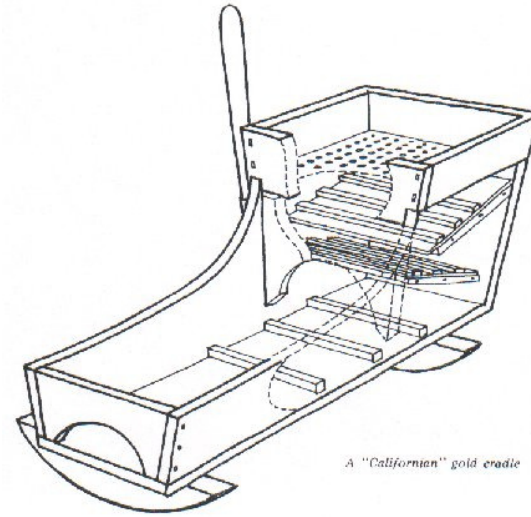
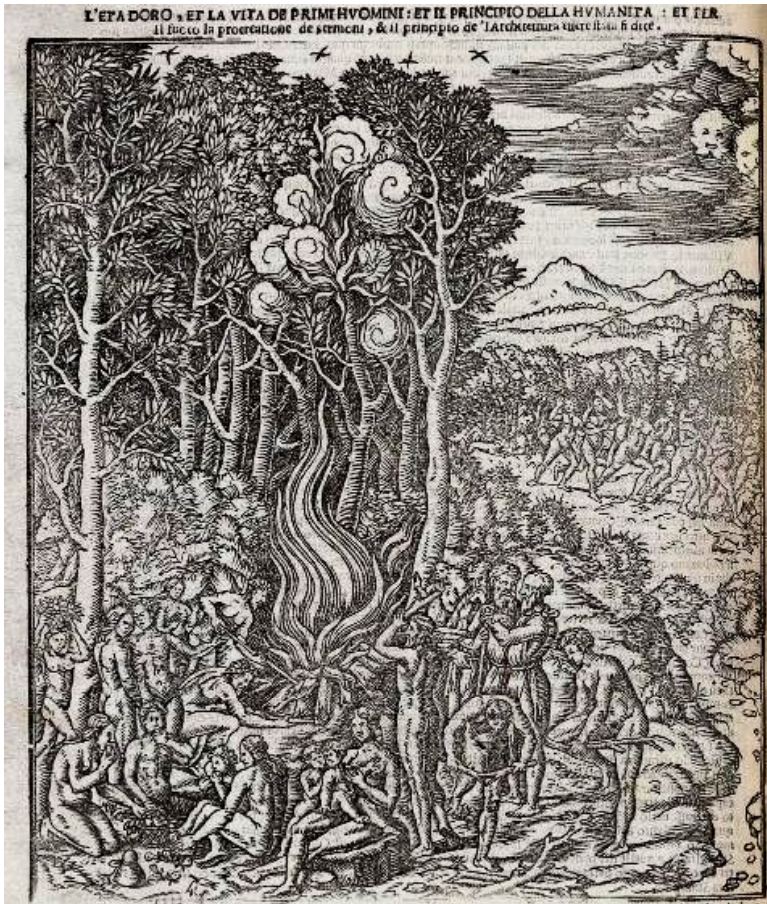
Engage the monumentality of settled cultures

My design must:

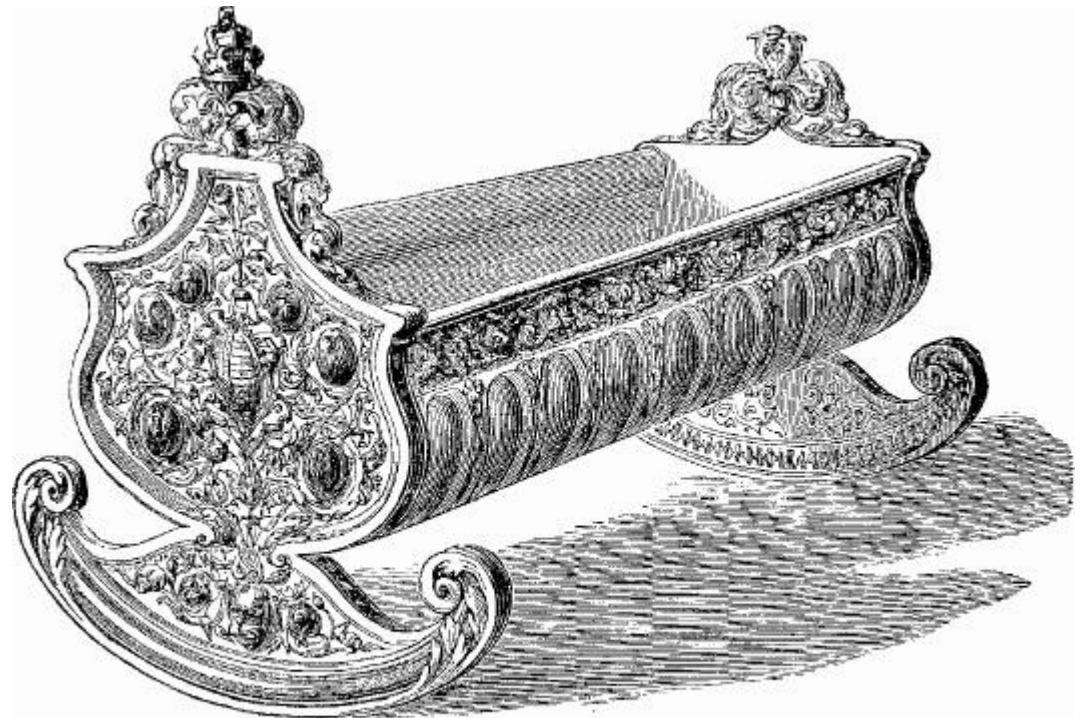
Engage the ephemerality of nomadism

Engage the monumentality of settled cultures

Engage the occupants physically, mentally and socially



A "Californian" gold cradle

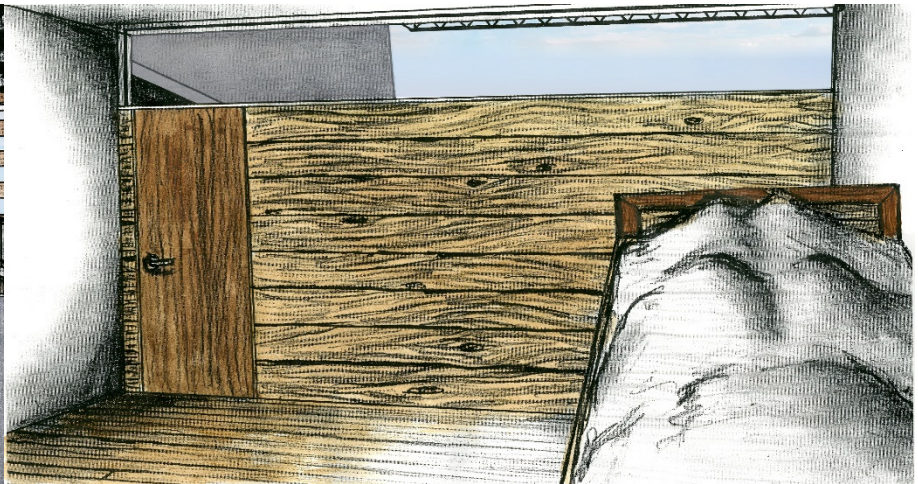
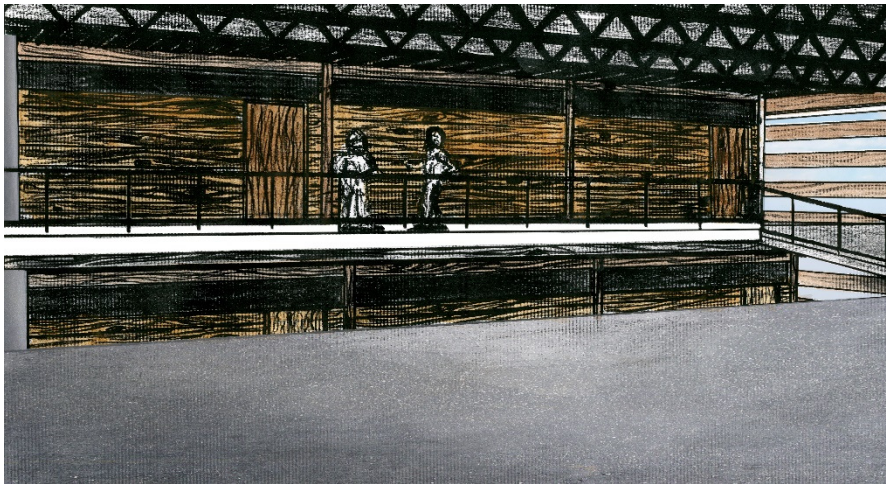
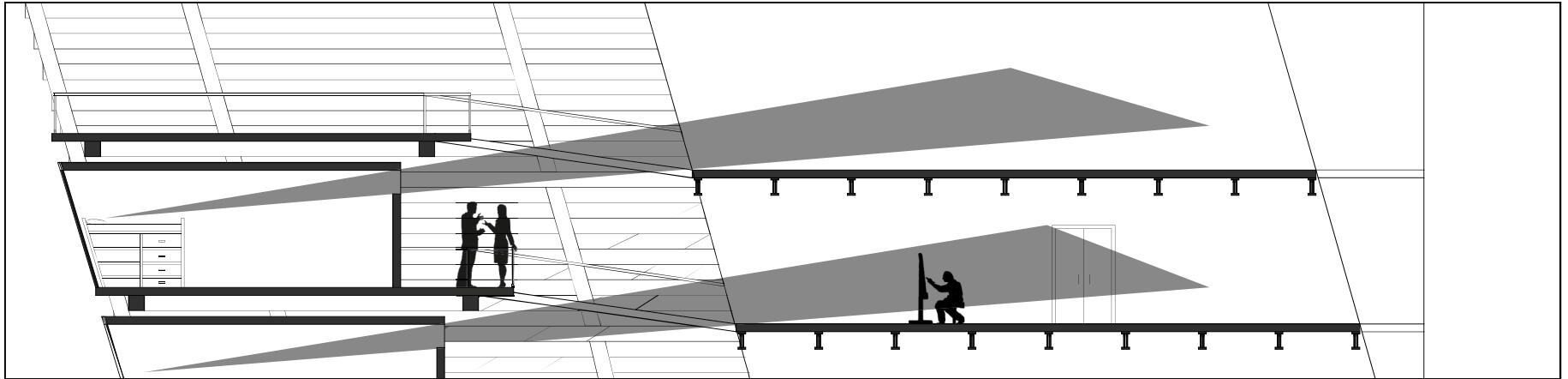


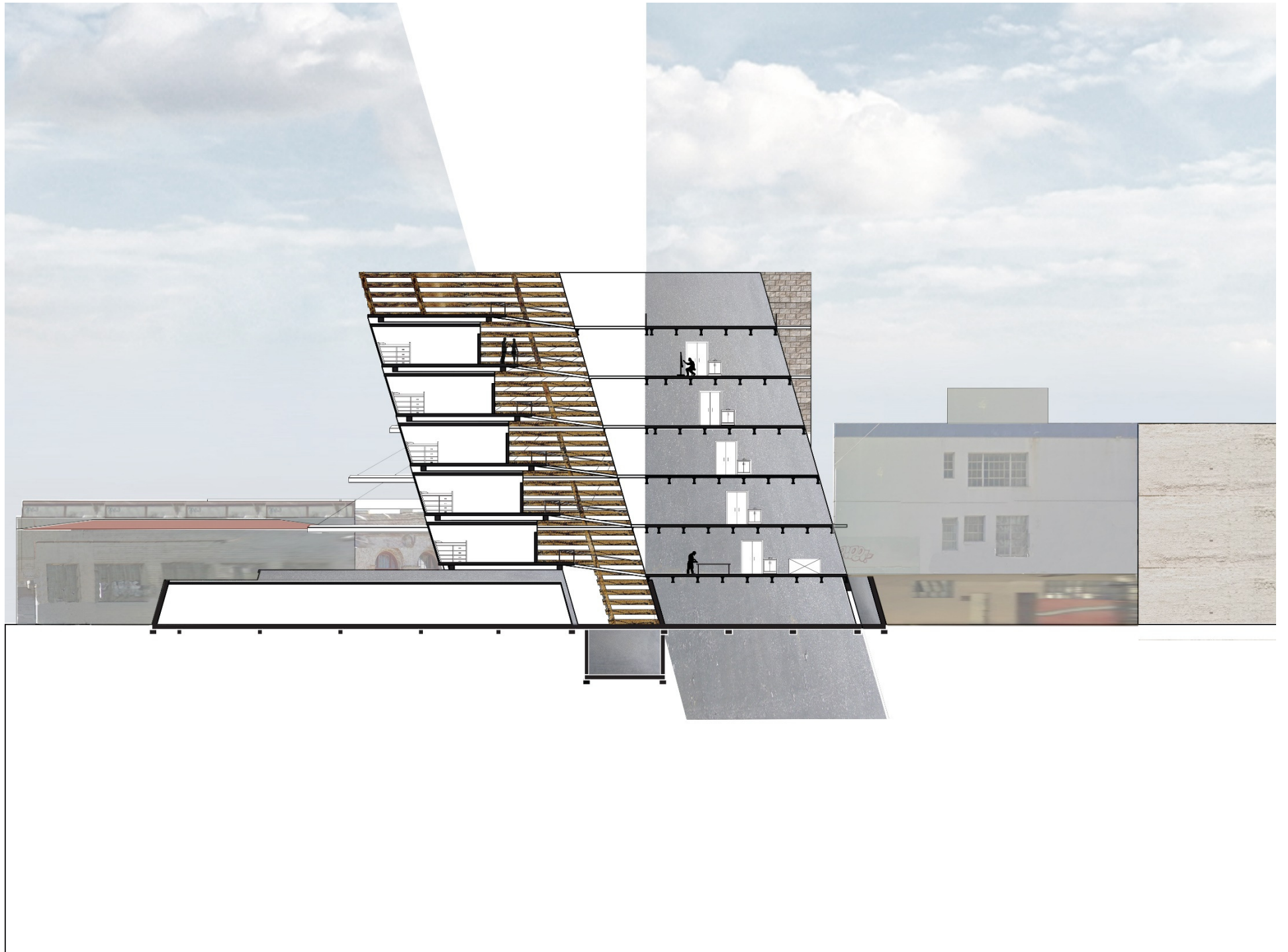
Cradle

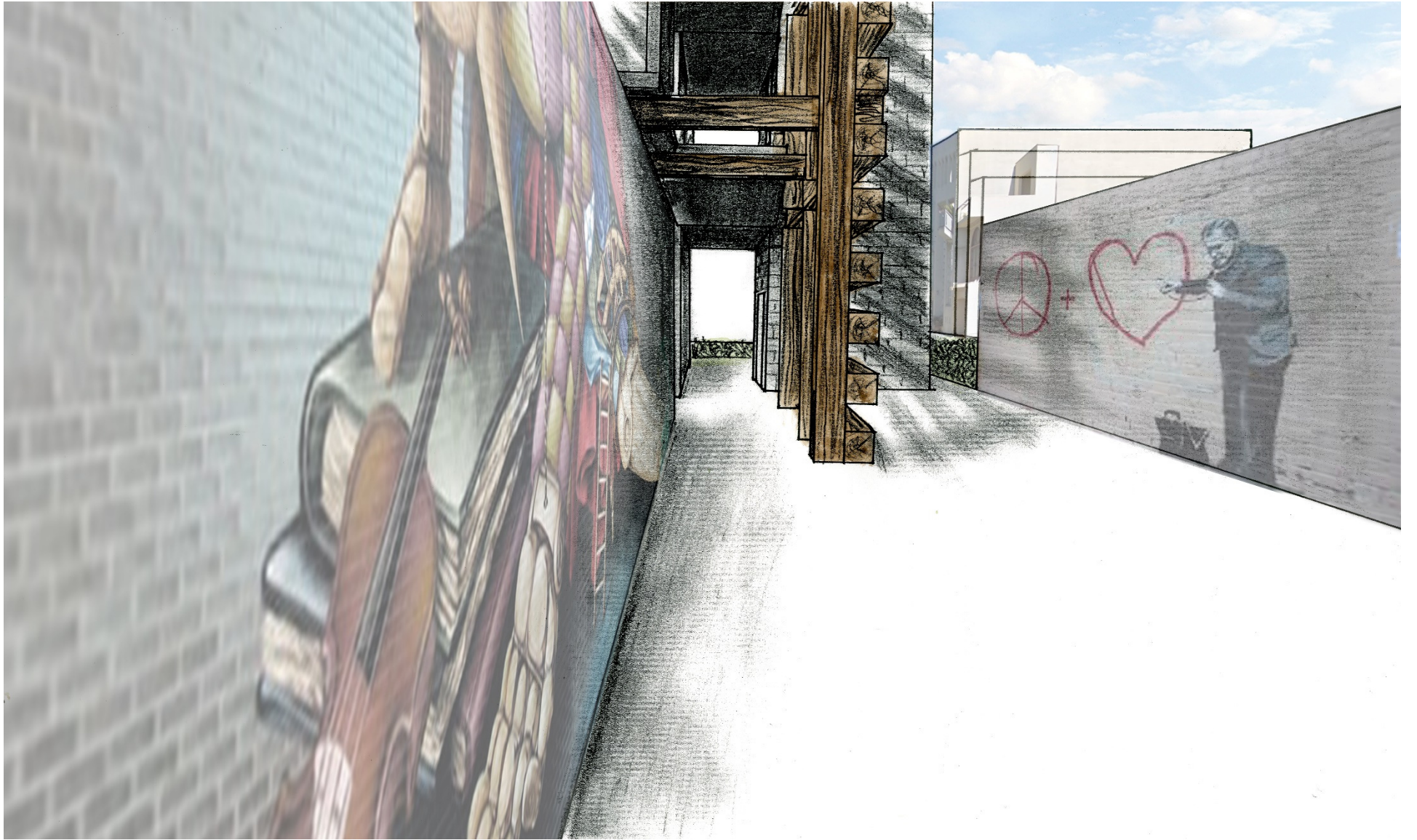
Source

Refining

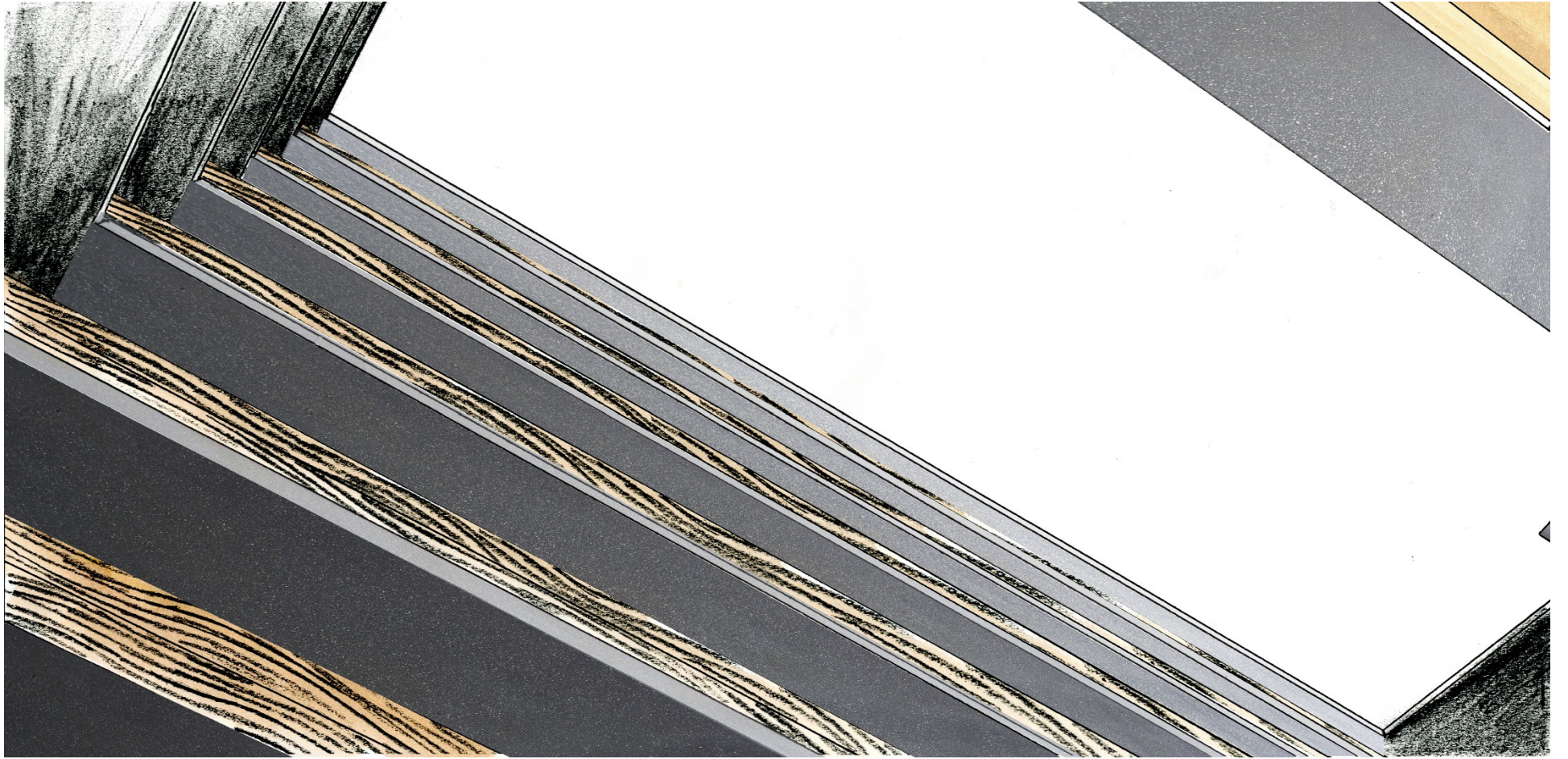
Rest



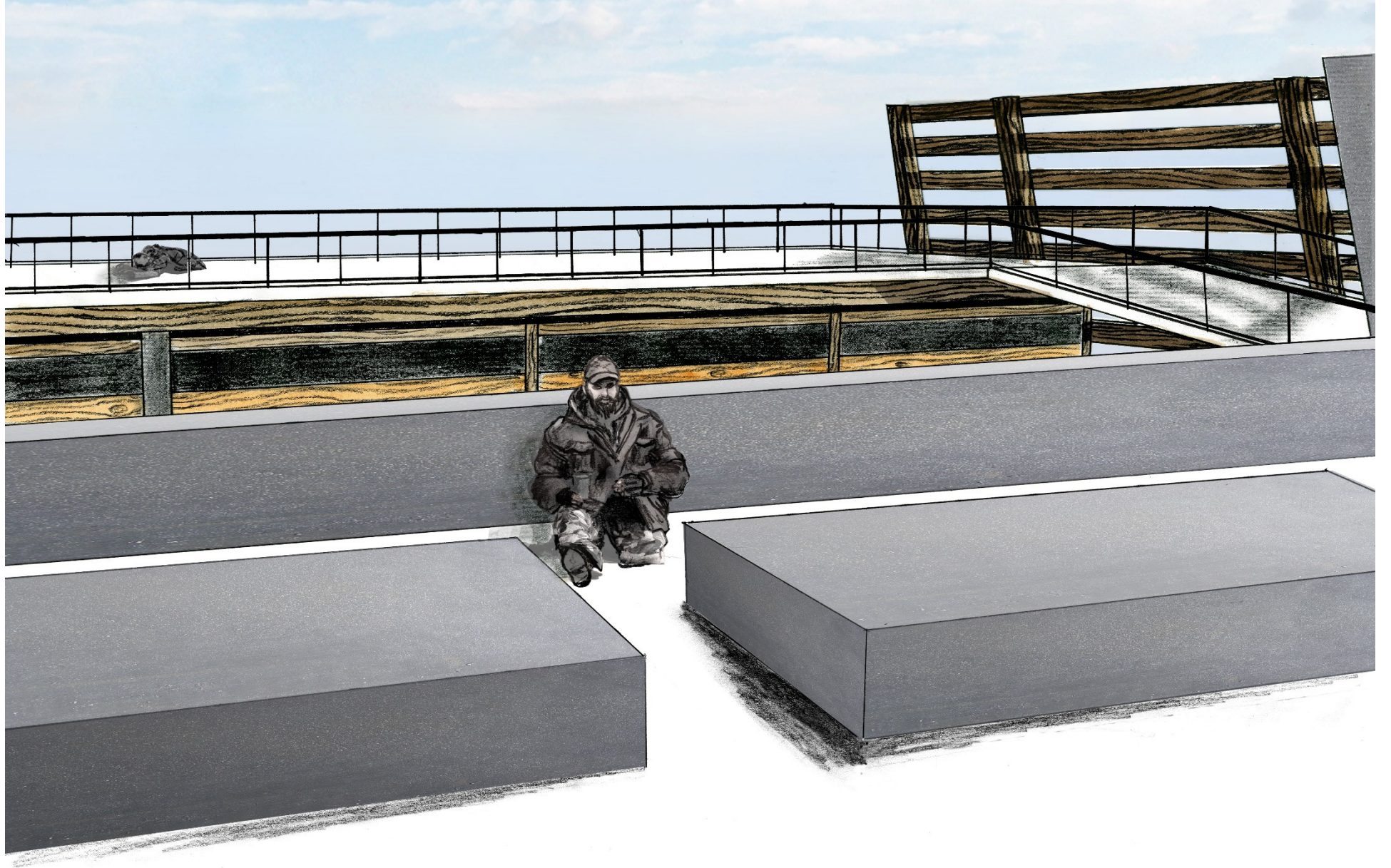




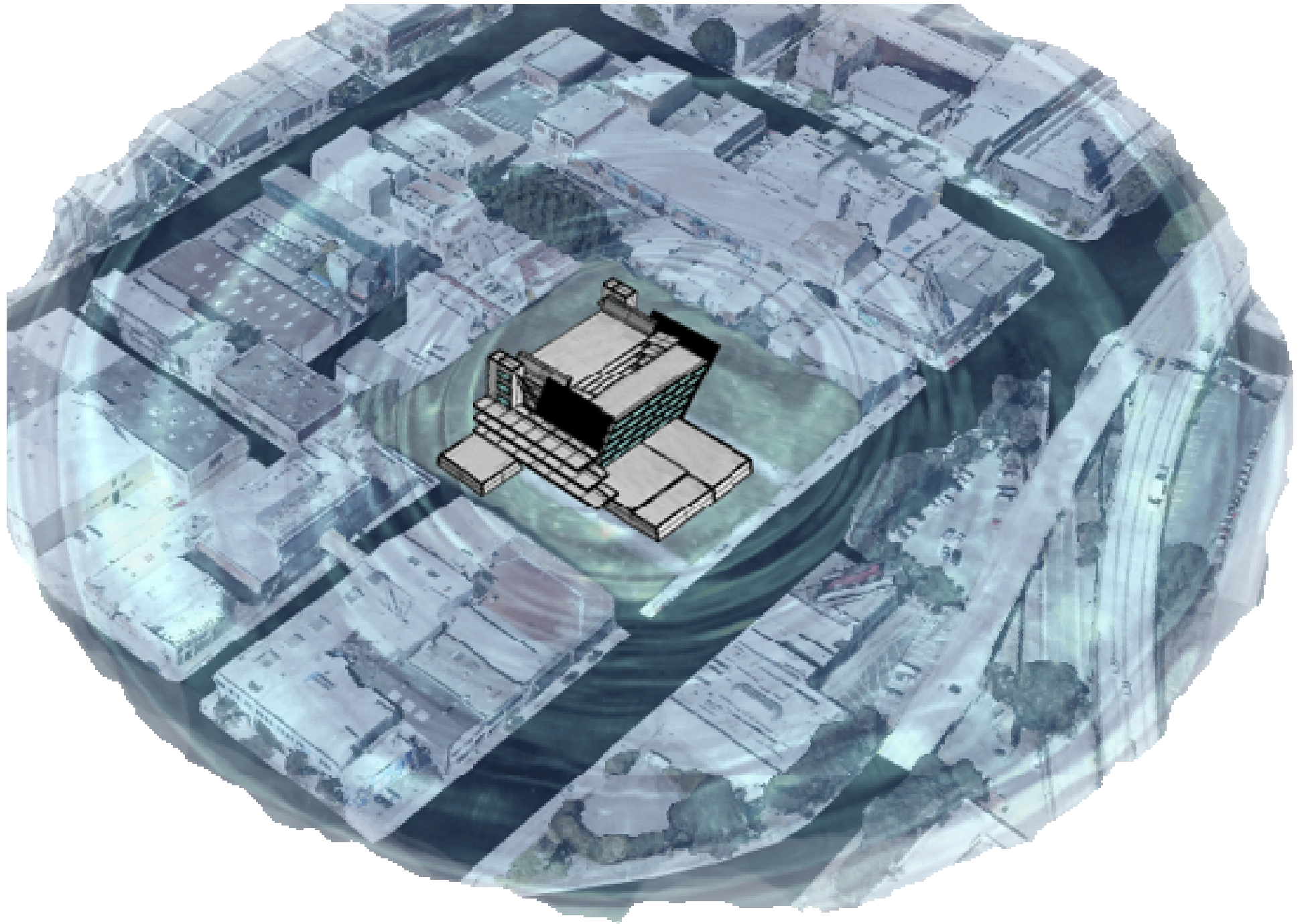




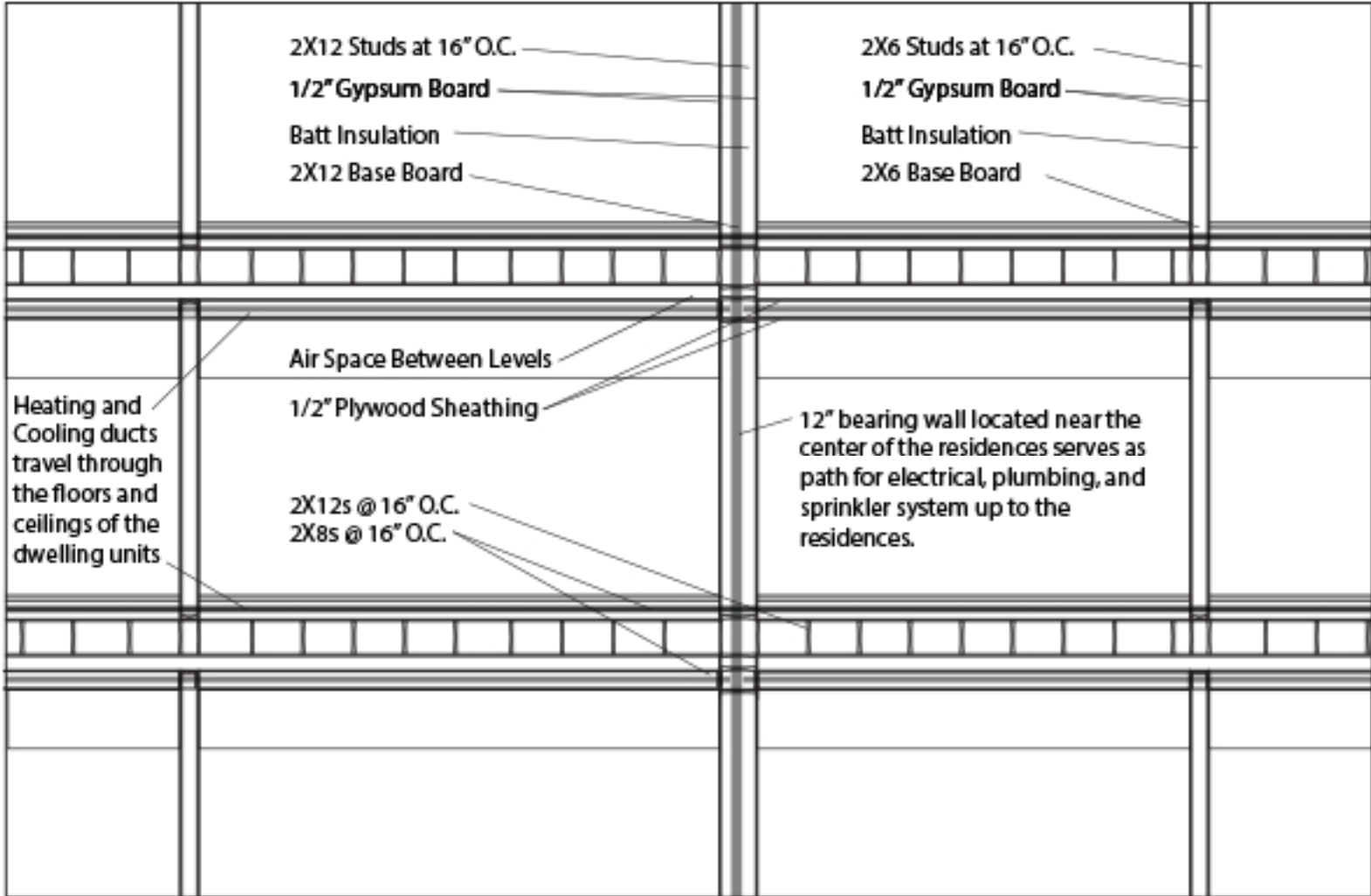


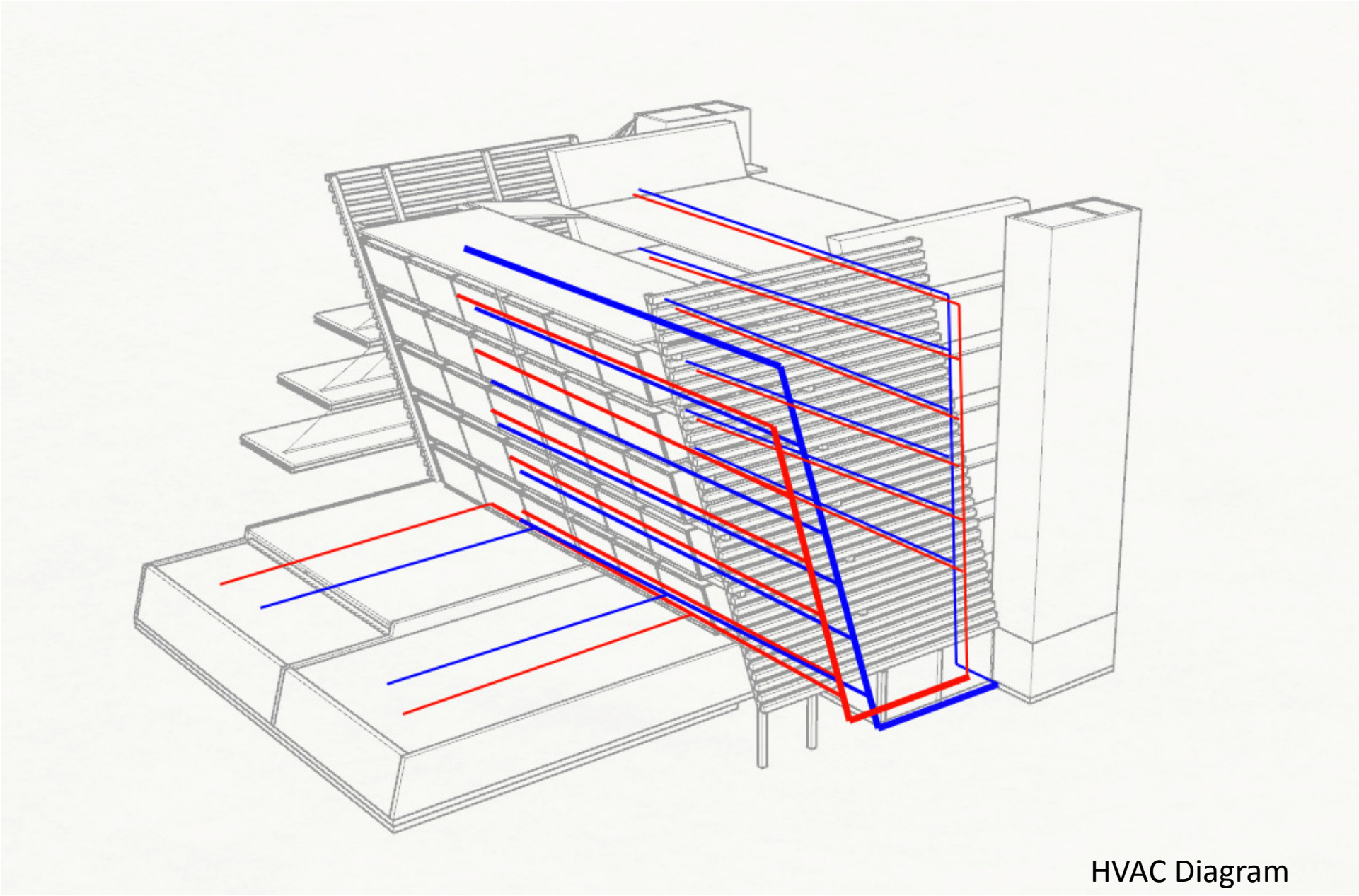




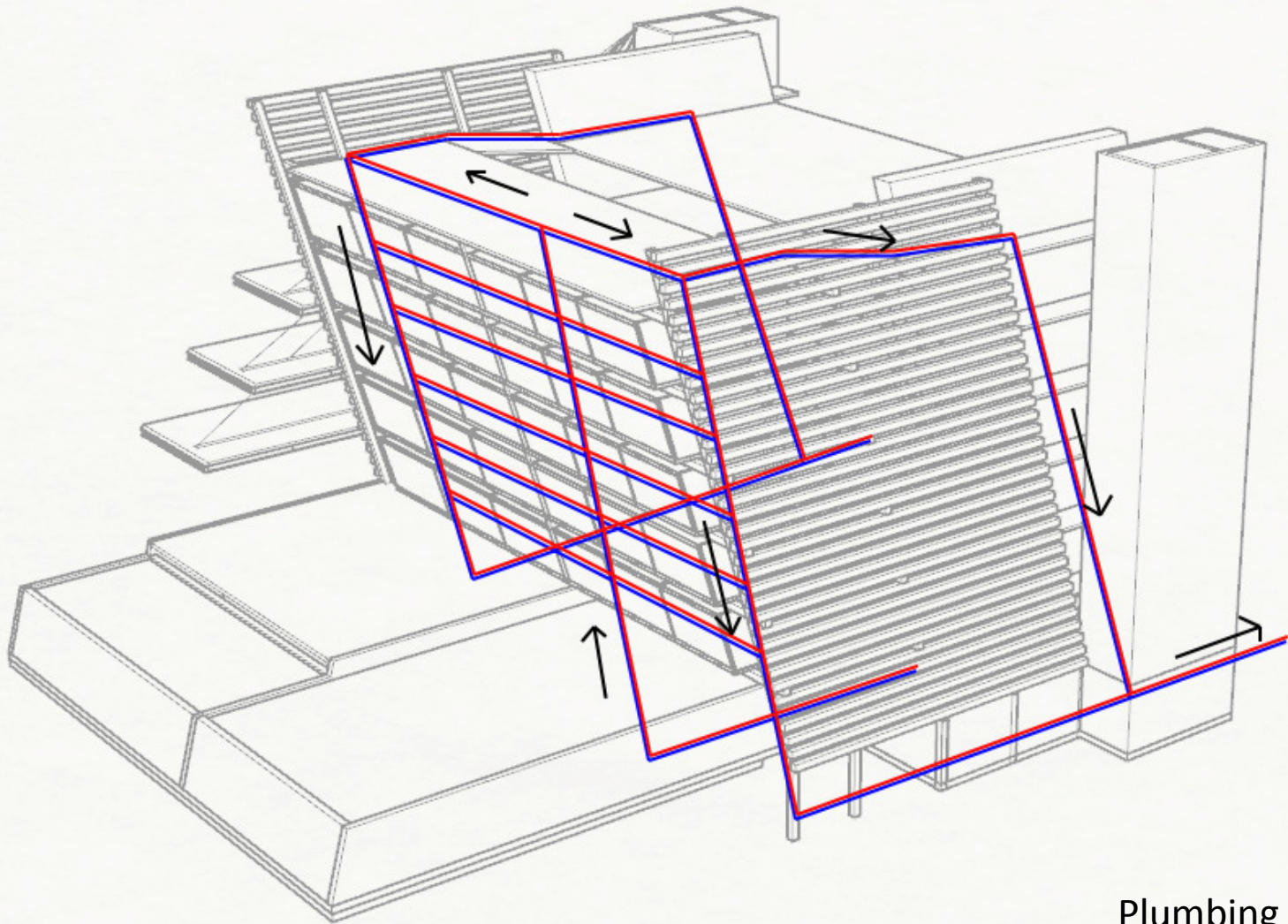








HVAC Diagram



Plumbing
Diagram