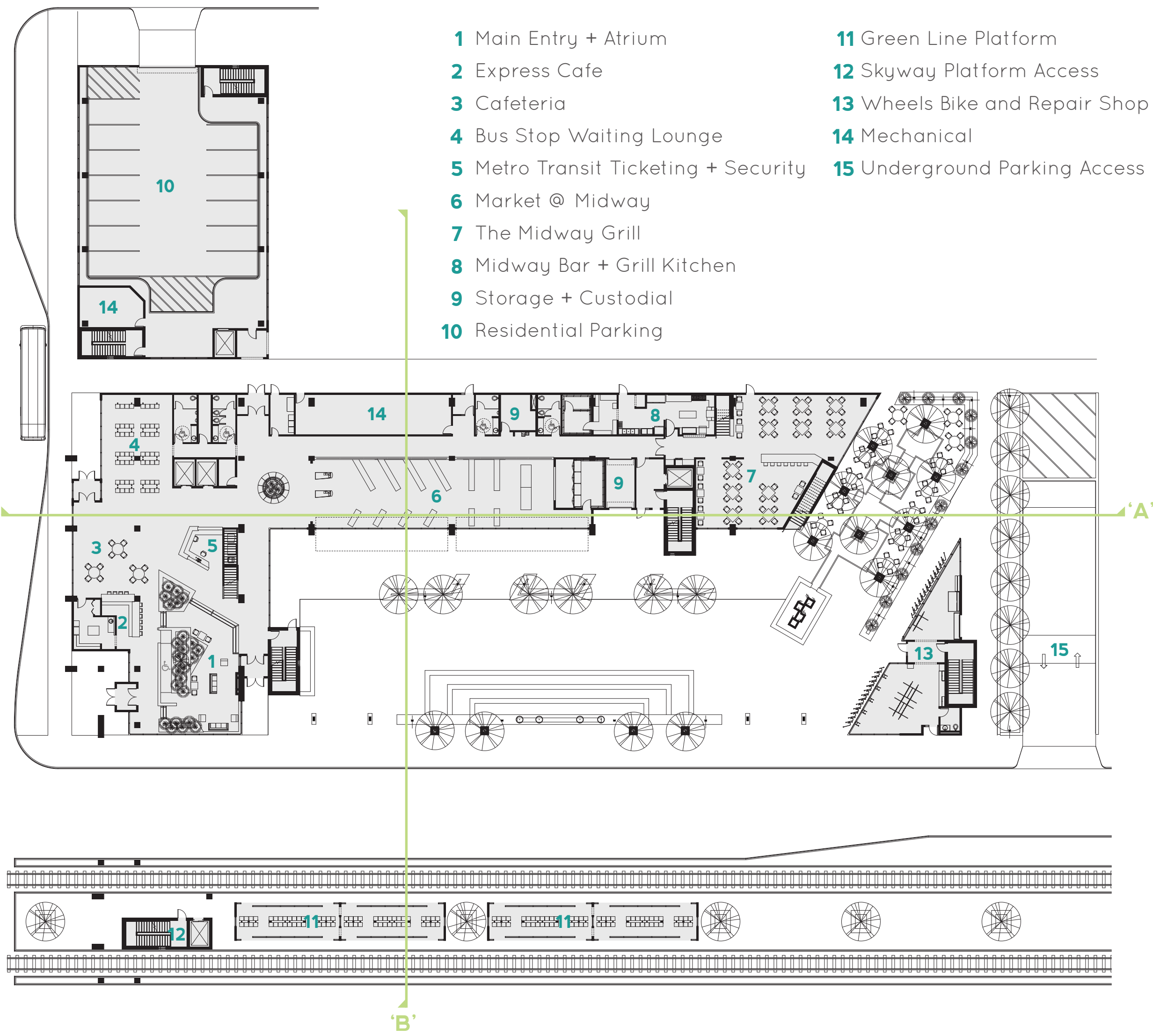
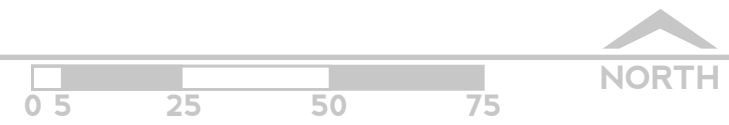
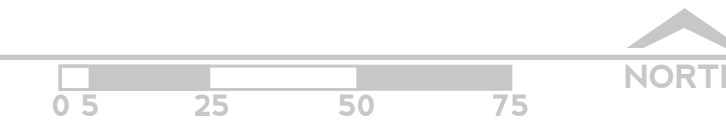


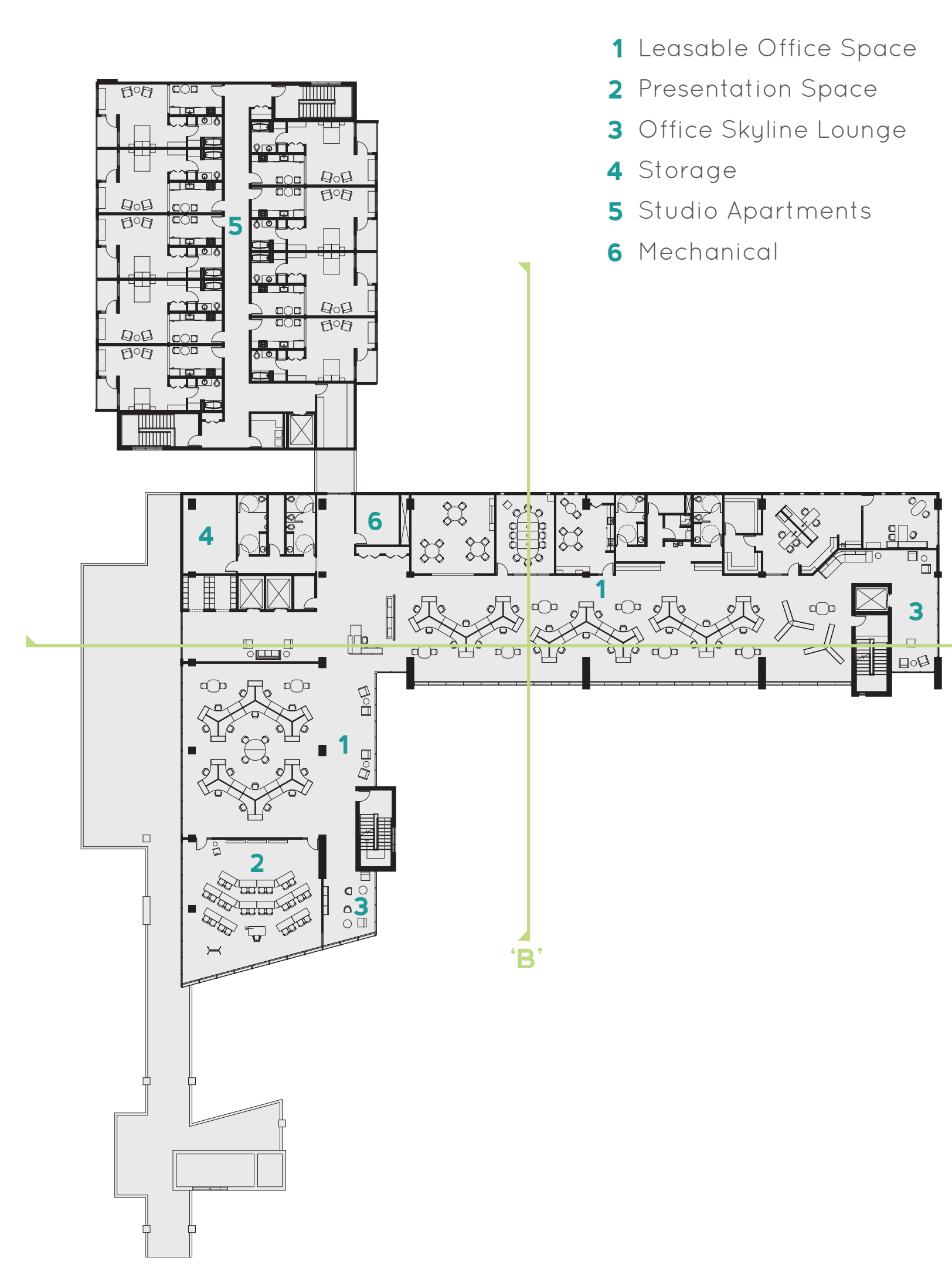
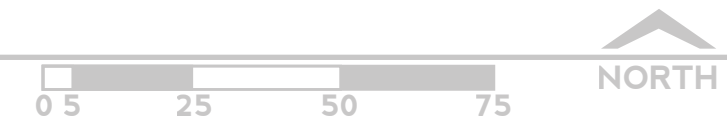
FIRSTLEVEL



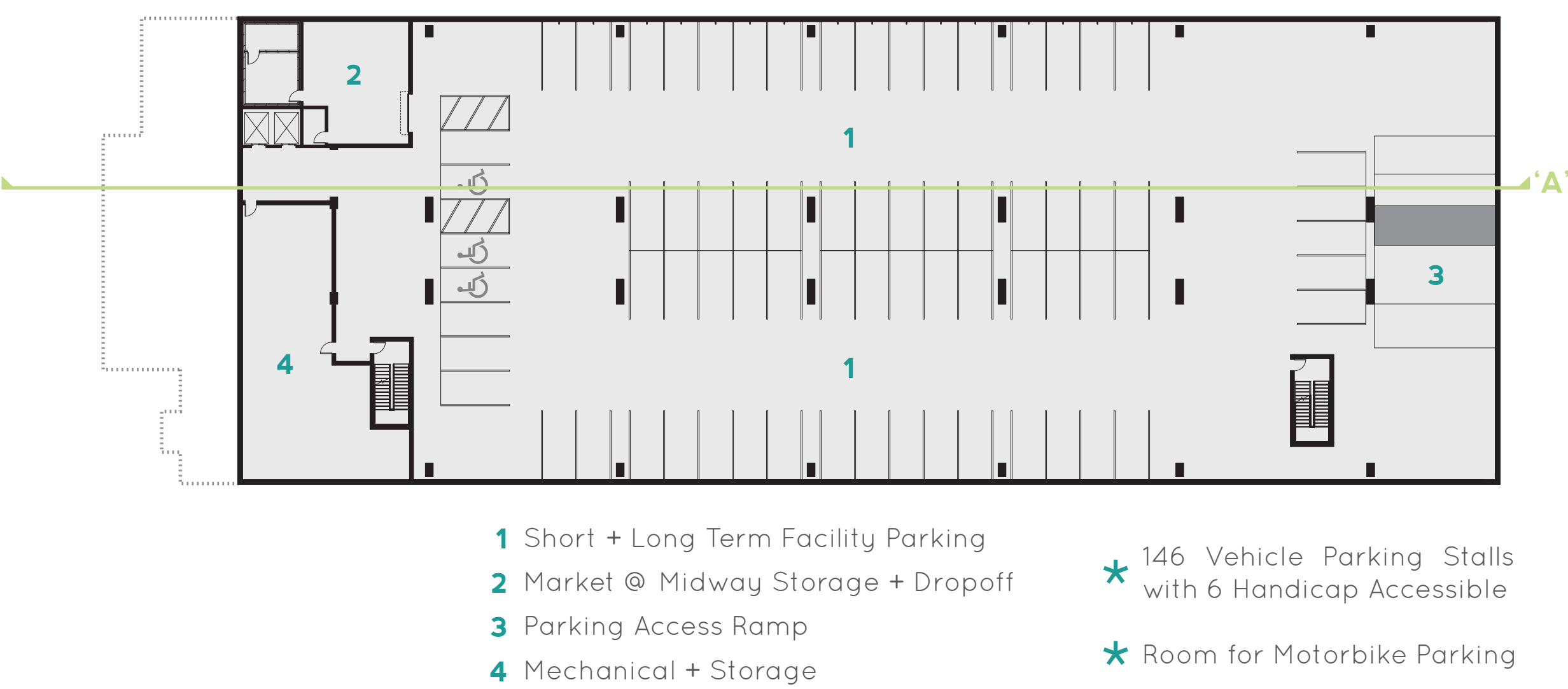
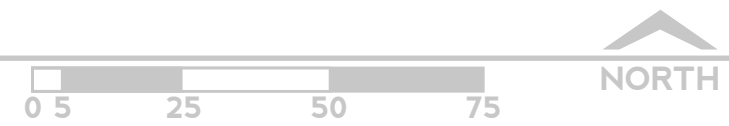
SECONDLEVEL



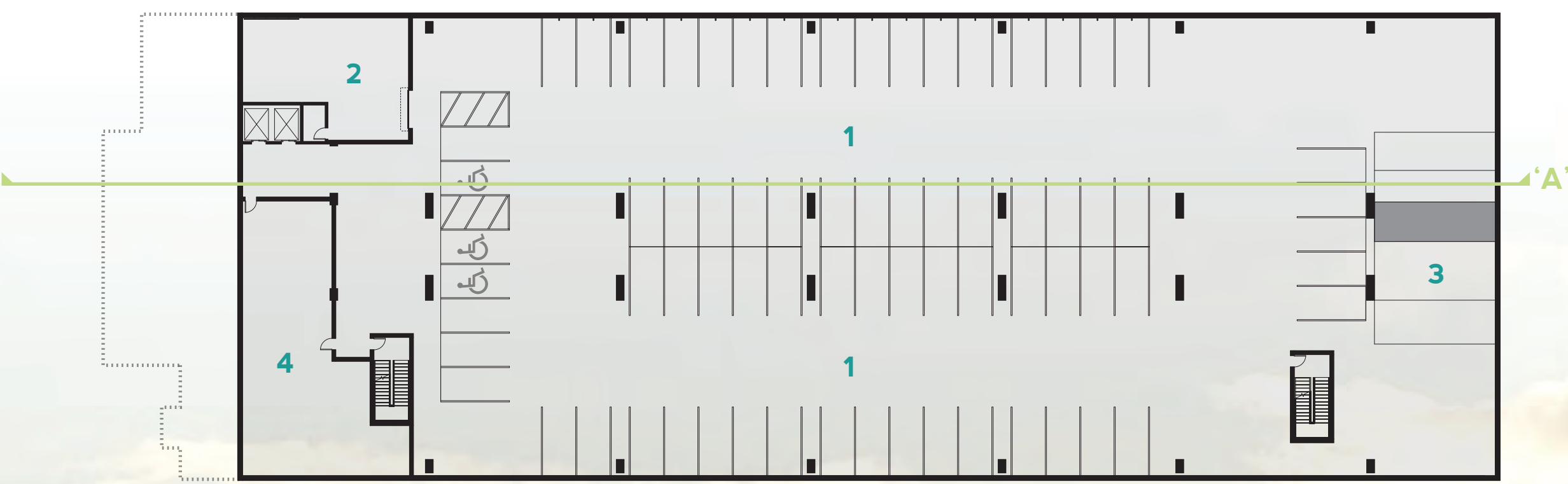
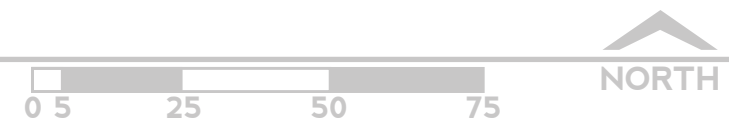
THIRDLEVEL



SUBGRADEPARKING01



SUBGRADEPARKING02



SEASONAL USES

- WINTER**
 - Snowman Building Contests
 - Ice and Snow Carving Displays
 - Holiday Light Display
 - Winter Bike Storage for Residents
 - Food Carts - Hot Drinks
 - Cross Country Skiing in the Alley Bike Lane
 - 'North Pole' Display and Holiday Tree Sales
 - Neighborhood Winter Festival
 - Snowtire Bike Race
- FALL**
 - Farmers Market
 - Market is Open through Early Fall
 - Fountains Remain Active through Early Fall
 - Lounge and Patio Furniture
 - School and Local Art Shows
 - Standing Canopy Heaters around Furniture
 - Street Performers
 - Food Carts
 - Bike Season Closes
- SPRING**
 - Lounge and Patio Furniture
 - Local School Art Shows
 - Standing Canopy Heaters around Furniture
 - Fountains Begin in Late Spring
 - Market Opens to Outside in Late Spring
 - Bike Season Begins
 - Street Performers
 - Food Carts
 - Gardening Fairs
- SUMMER**
 - Farmers Market
 - Market is Open to Outside
 - Fountains Remain Active
 - Craft and Art Fairs
 - Food / Cooking Contests
 - Neighborhood Festival
 - Concerts
 - Street Performers
 - Food Carts

ACTIVATED SPACES

