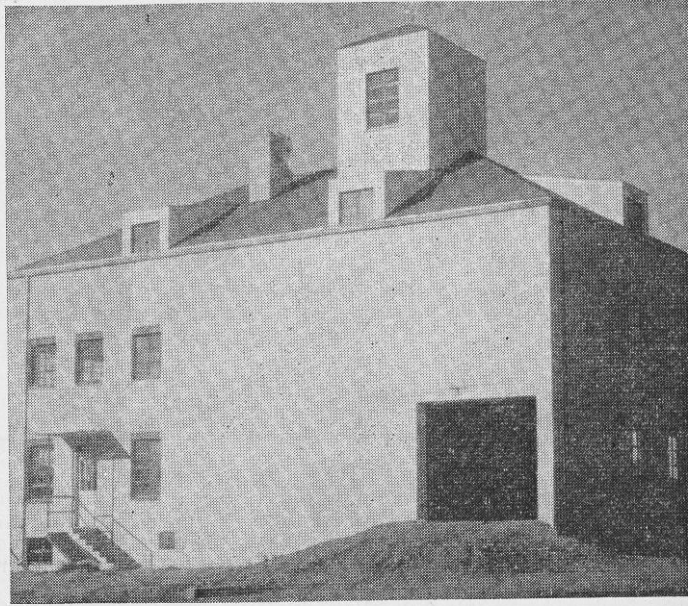
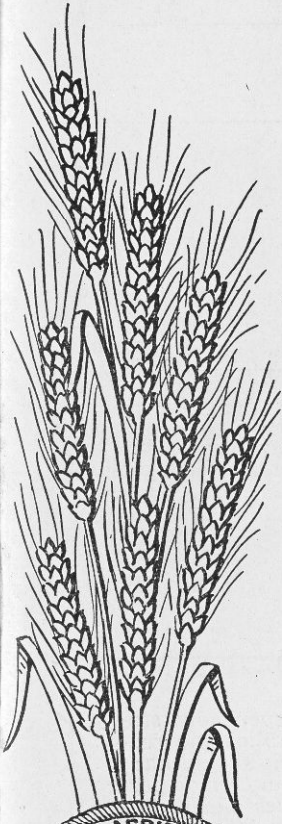


MAR 2 '50

Bi-monthly BULLETIN

NORTH DAKOTA AGRICULTURAL
EXPERIMENT STATION
FARGO, NORTH DAKOTA



New Seedhouse, completed just this past summer at North Central Experiment Station, Minot. It is constructed of concrete and is equipped with modern grain handling elevating and cleaning machinery. Bin capacity over 10,400 bushels.

TABLE OF CONTENTS

Phytotoxic Effects of Aqueous Extracts of Field Bindweed and of Canada Thistle by E. A. Helgeson and Richard Konzak	71
Potato Fungicide Experiments in 1949 by Wm. G. Hoyman	77
Control of Stomach and Intestinal Worms of Sheep by D. F. Eveleth	80
Observations on the Addition of Chemical Ingredients to Flour and Bread by Rae H. Harris	81
Virus Disease Problems on Hardy Stone Fruits In North Dakota by J. H. Schultz	84
Marking Experimental and Demonstration Plots by Richard Lewis Post	88
Native Bees by O. A. Stevens	90
Effects of Storage on Potato Quality by Rae H. Harris	99
Barley Varieties in North Dakota, 1949 by C. J. Heltemes and L. W. Orvold	100

"I do not believe that the work of our experiment stations is at present fully appreciated by the public. The reason: The story of research has not been told as it should have been over a period of years. Only a comparatively small percentage of our rural people appreciate the values and profits they are receiving from our experiment station laboratories. If our research work is to forge ahead, or even if it is not to stand still or retrench, its benefits to society at large must be made increasingly apparent to the public."

—W. L. Treaster, Director of Public Relations,
Michigan State College.