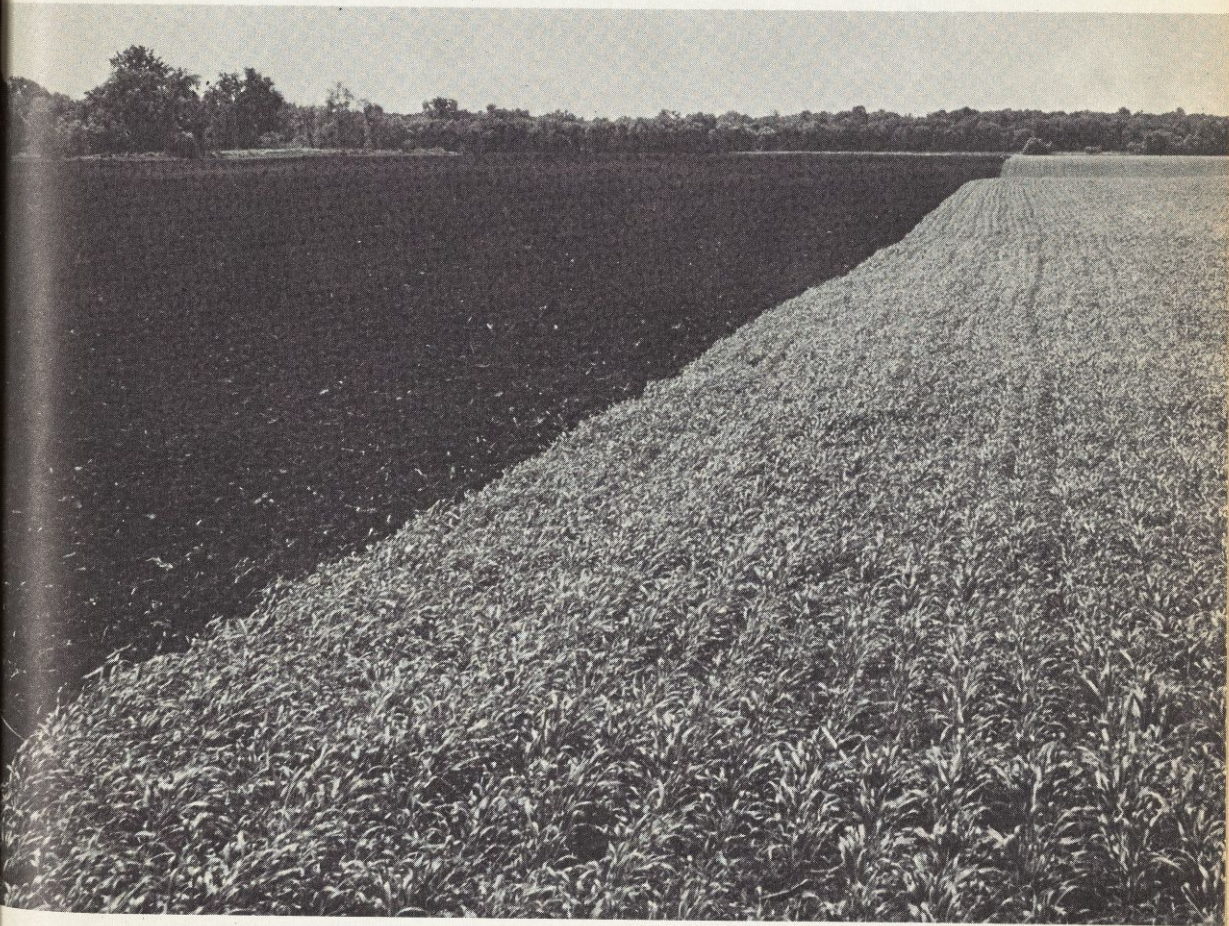




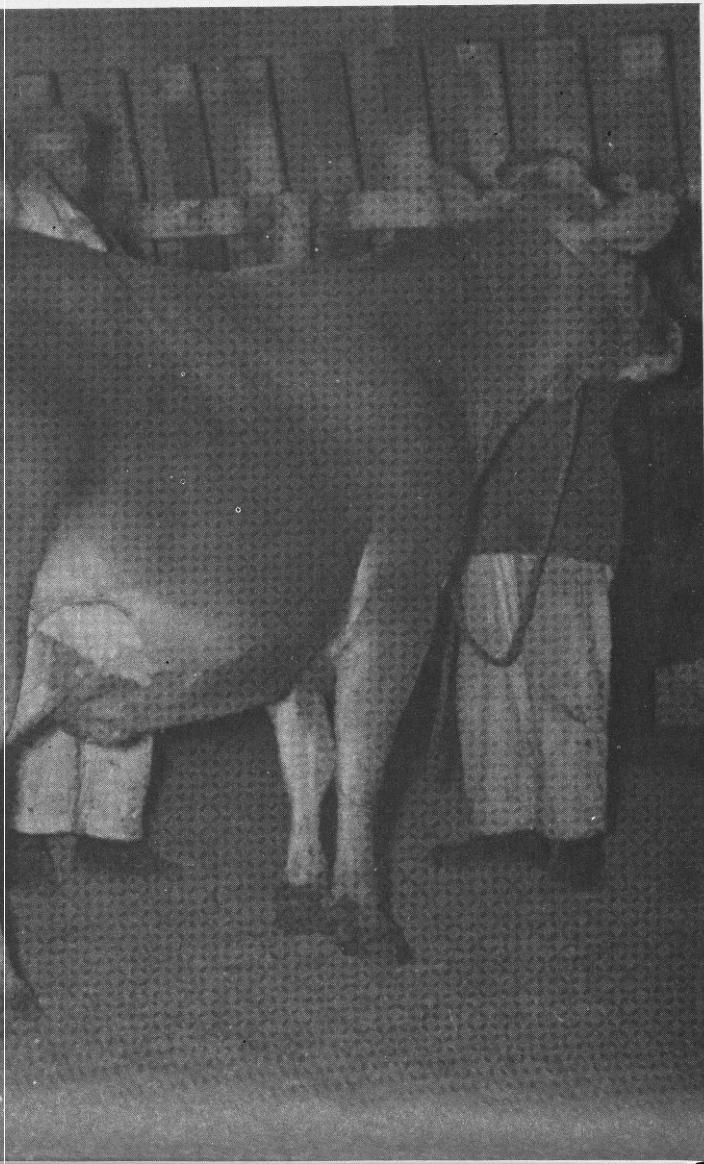
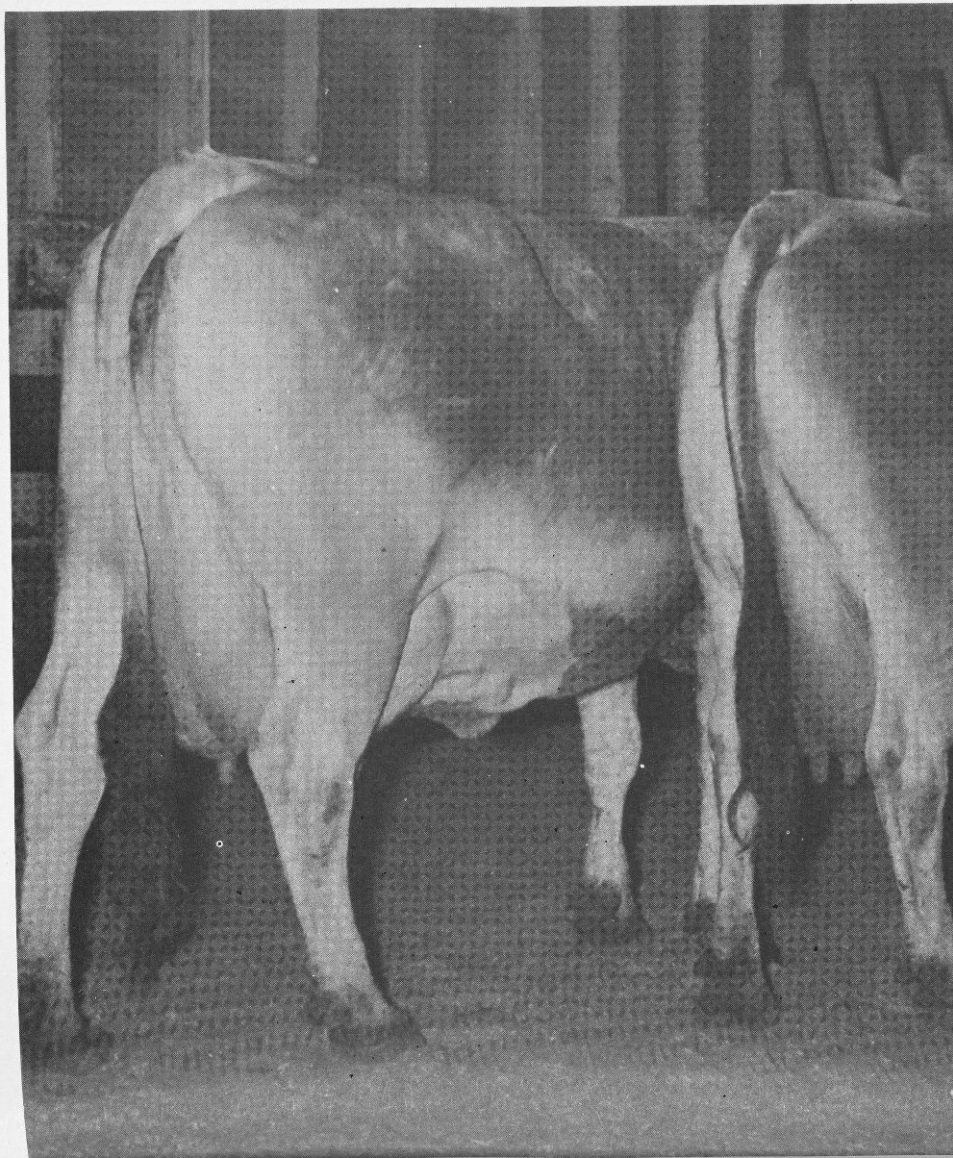
NORTH DAKOTA
Farm Research

Bimonthly
Bulletin

Vol. 24, No. 11
May-June, 1967

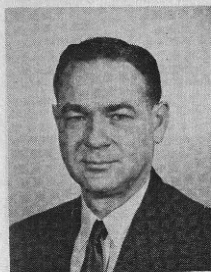


Soybeans in North Dakota . . . Page 4



FROM THE DIRECTOR —

NEW CROPS, NEW USES



Director Hazen

Wheat still is king of cash crops in North Dakota. Our climate and soils are well adapted to production of hard red spring and durum, specialty crops for bread and pasta products.

Since the time of the bonanza farms, our farmers have enjoyed growing wheat. It is a major part of our agricultural tradition.

Since the founding of the North Dakota Agricultural Experiment Station, wheat research, particularly wheat breeding for increased yield, disease resistance and better quality, has been a major effort. Wheat research will continue to be a major portion of the total program for the foreseeable future.

Yet the world is our market and the world is changing. We will continue to specialize in hard red spring wheat for bread, and durum for pastas. But, we also are looking at our specialty wheats for other purposes.

Over the past several years the researchers have published a number of articles concerning their work with wheat as a feed for livestock. This issue of Farm Research contains one on wheat as feed for laying hens. Research has been done with our wheats as major ingredients in other type foods, including types of quick breads liked in other lands. We have experimented in uses of wheat straw. We are trying to diversify our wheat — give it a broader base of use and appeal.

(Continued on Page 27)

In This Issue

Soybeans in North Dakota — History and Development	4
North Dakota Grown Grains for Laying Hens, a Comparison	8
Wheat Seed Size Influences Yield	12
On Non-Fallowed, Stored Soil Moisture Best Guide to Nitrogen Needed	15
Field Peas Tested at North Central Station, Minot	25

COVER: Early summer in southeastern North Dakota.

INSIDE COVER: Two record - holding Brown Swiss from the Experiment Station herd.

NORTH DAKOTA Farm Research

Bimonthly
Bulletin

Vol. 24, No. 11

May-June, 1967

A BIMONTHLY progress report published
by the

**Agricultural Experiment Station,
North Dakota State University of
Agriculture and Applied Science**
Fargo, N. D.

ARLON G. HAZEN

*Dean of Agriculture, and Director
of Agricultural Experiment Station*

EDITORS

Dorothea McCullough

James Berg