

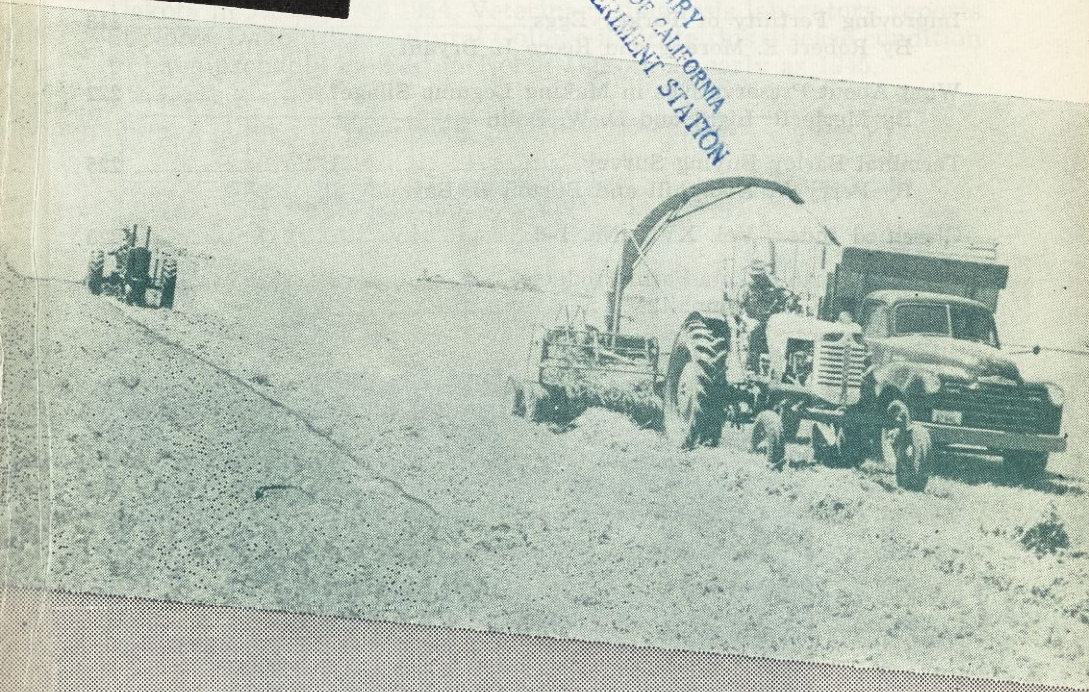
AUG 3 '55

July-August
1955

BIMONTHLY

bulletin

LIBRARY OF CALIFORNIA
UNIVERSITY OF CALIFORNIA
RIVERS EXPERIMENT STATION



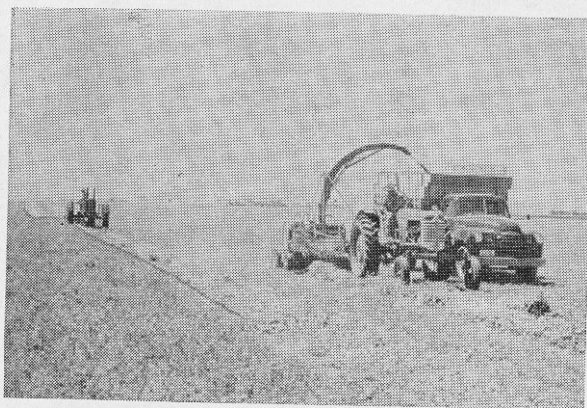
NORTH DAKOTA AGRICULTURAL
EXPERIMENT STATION
FARGO, NORTH DAKOTA

Vol. XVII

No. 6

TABLE OF CONTENTS

	Page
Mucosal Disease in North Dakota By I. A. Schipper and D. F. Eveleth	203
Parasitism is Increasing By R. F. Shumard	207
Fattening Rations Fed to Steers By Larkin H. Langford and Raymond J. Douglas	209
Distribution of Sulfur in Alfalfa By A. F. Kingsley	212
Improving Fertility of Turkey Eggs By Robert E. Moreng and Reece L. Bryant	218
What About Preservatives in Making Legume Silage? By Merle R. Light and D. W. Bolin	222
Terminal Barley Buying Survey By Perry V. Hemphill and Burton B. Barr	225
Classified Index, Vol. XVII, No. 1-6	229
Prices of North Dakota Farm Products By Perry V. Hemphill	234



COVER PICTURE—This is the season for making grass silage, as portrayed in this picture taken in an alfalfa field in Cass County, North Dakota. An article about making legume silage, by M. R. Light and D. W. Bolin, appears in this issue of the *Bimonthly Bulletin*.