

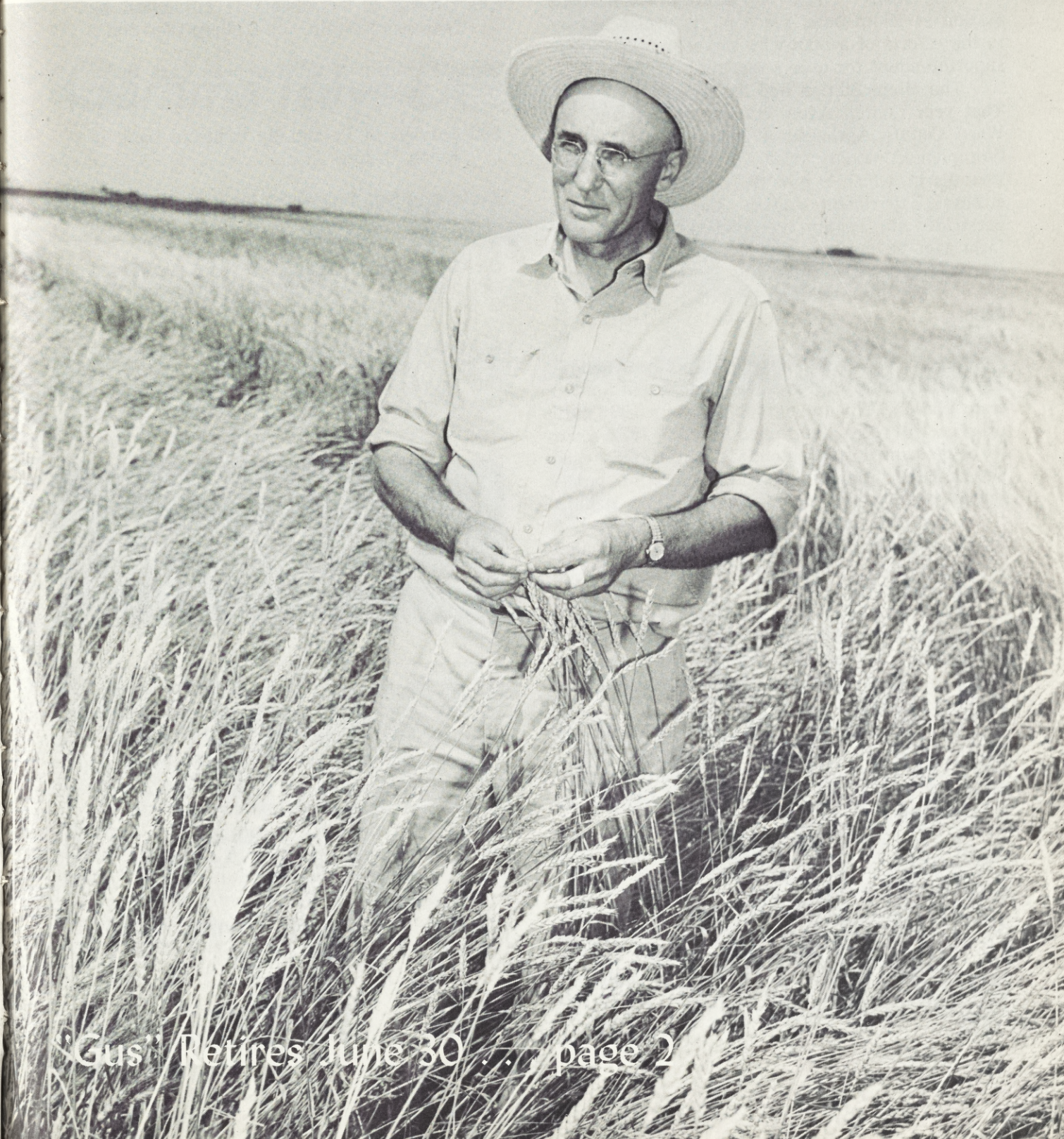


# NORTH DAKOTA Farm Research

Bimonthly  
Bulletin

Volume 29, Number 4

March - April, 1972



Gus Retires June 30 . . . page 2



# From the DIRECTOR



**A. G. HAZEN**

The North Central Agricultural Experiment Station at Minot owes much of its proud history to the efforts of a man who served unselfishly as superintendent for over a quarter-century.

The Minot Station had its beginning in 1944. That year County Agent Stanley Morrill and the Ward County Agricultural Improvement Association planted variety trials on the Ward County Poor Farm, which is now the North Central Agricultural Experiment Station. Morrill and others persuaded the county commissioners to turn the farm over to the Agricultural Experiment Station, North Dakota State University. So the commissioners donated three quarters of land to the state for experimental purposes, and the 1945 Legislature created the Station.

Gustav N. "Gus" Geiszler, superintendent of the North Central Agricultural Experiment Station from 1945 to 1970, and agronomist from 1970 until present, will retire due to age June 30, 1972. Prior to being named superintendent, Mr. Geiszler had accumulated approximately 17 years of public service employment for the state of North Dakota.

I take this opportunity to publicly thank Gus for his years of devoted service in the development of the program of the North Central Agricultural Experiment Station.

From the beginning, the Station assumed a major role in seed increase. Today, 500 acres of the Station's six quarters are devoted to seed increase. A seedhouse was added to the Station's facilities in 1948.

In addition to the work on the Station, off-station trials are conducted at Rugby and Velva. The Station program is currently under the supervision of Ben Hoag, who succeeded Geiszler as superintendent in 1970.

An advisory Board of Visitors for the Station was established by the legislature in 1945. It is composed of two farmers from each of the 12 counties surrounding the Station. These members are designated by their respective county commissioners. In addition to Ward, these counties include Rolette, Benson, McLean, Mountrail, McHenry, Pierce, Sheridan, Renville, Bottineau, Burke and Wells.

# In This Issue

Gamma Rays Determine Soil Water Content of Soil-Plant Systems .....	3
Potato Storage During the Curing Period .....	8
Your Ration Can Fit Your Feed Supply .....	16
The Growth of Sugarbeets as Influenced by Nitrogen Fertilizer on a Fargo Clay Soil .....	17
Natural Control of the European Corn Borer by Parasites .....	22
Soil Surveys of Potentially Irrigable Land in North Dakota .....	24
Evaluating Soil and Water for Irrigation .....	25

**On The Cover:** Thousands of North Dakota farmers and ranchers will long remember this view of G. N. "Gus" Geiszler, for 27 years superintendent of the North Central Branch Experiment Station, as he explains to them the virtues or disadvantages of a new wheat variety under test at the Station. Gus retires on June 30, after 42 years of public service to the State of North Dakota.



**Vol. 29, No. 4**

**March - April, 1972**

A BIMONTHLY progress report published  
by the  
**Agricultural Experiment Station,  
North Dakota State University of  
Agriculture and Applied Science**  
Fargo, North Dakota 58102

**Arlon G. Hazen**

*Dean of Agriculture, and Director  
of Agricultural Experiment Station*

**EDITORIAL ADVISOR**

*H. Roald Lund*

**EDITORS**

*Robert A. Jarnagin*

*J. J. Feight*

*Gary Moran*

*Dorothea McCullough*

**Farm Research**