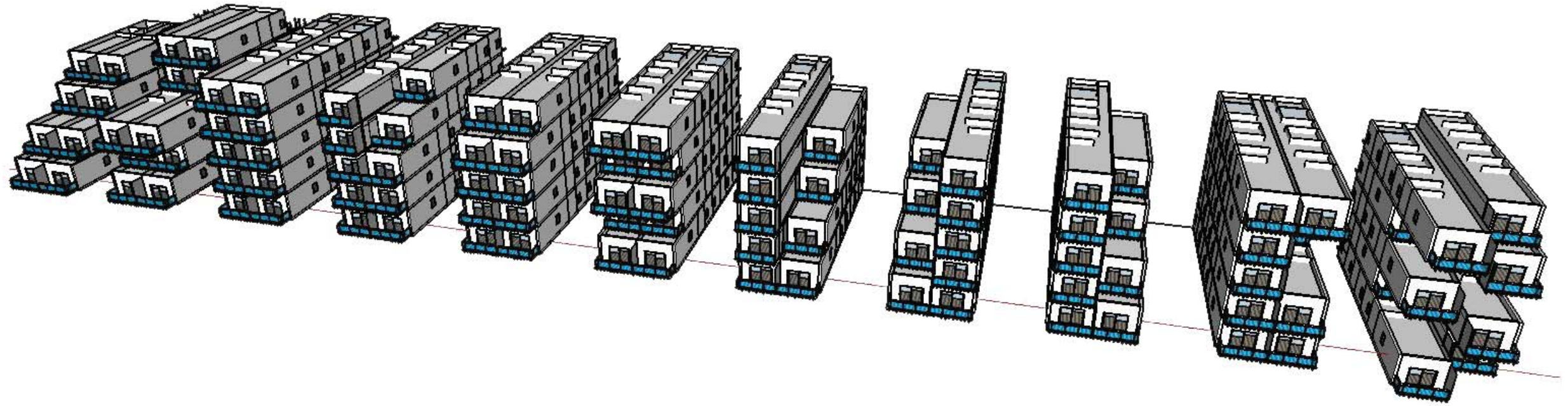
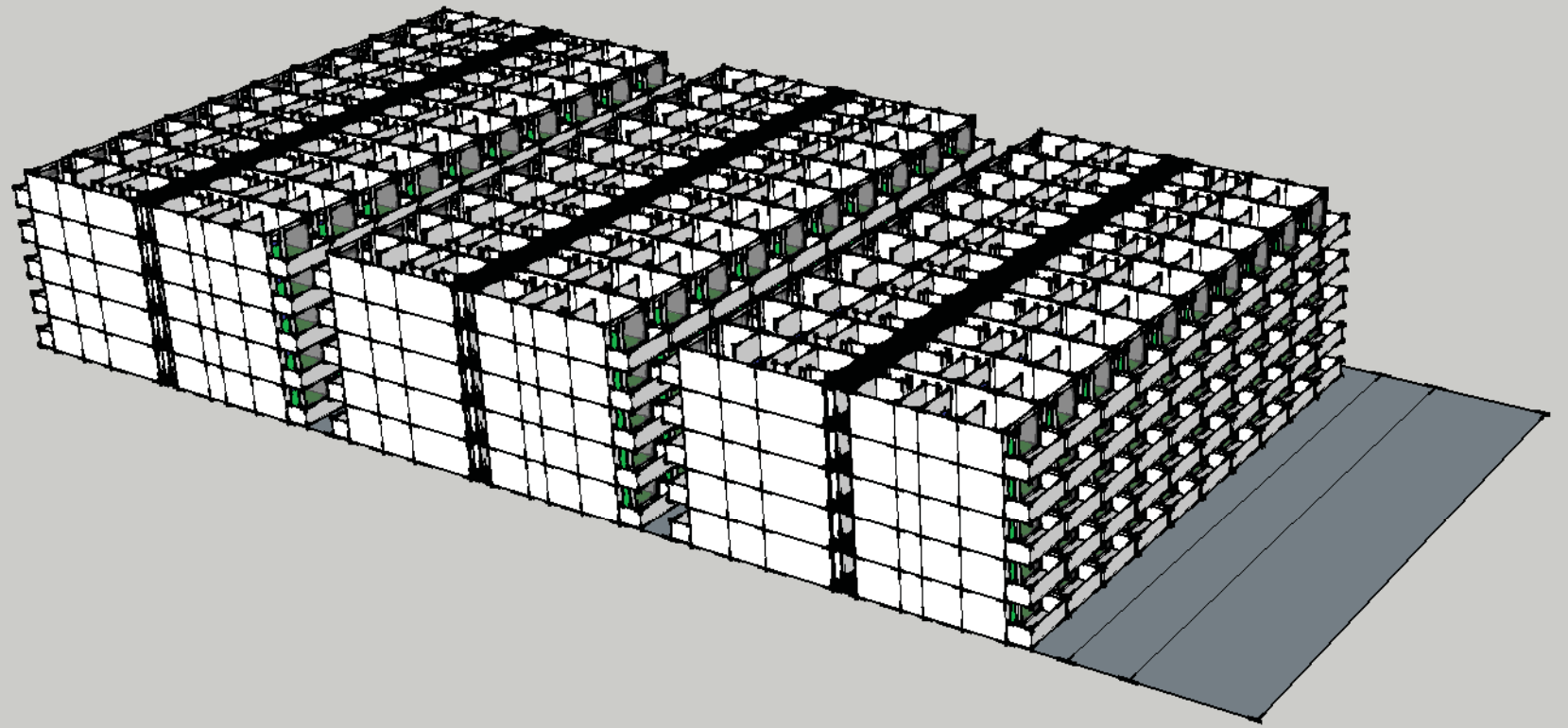
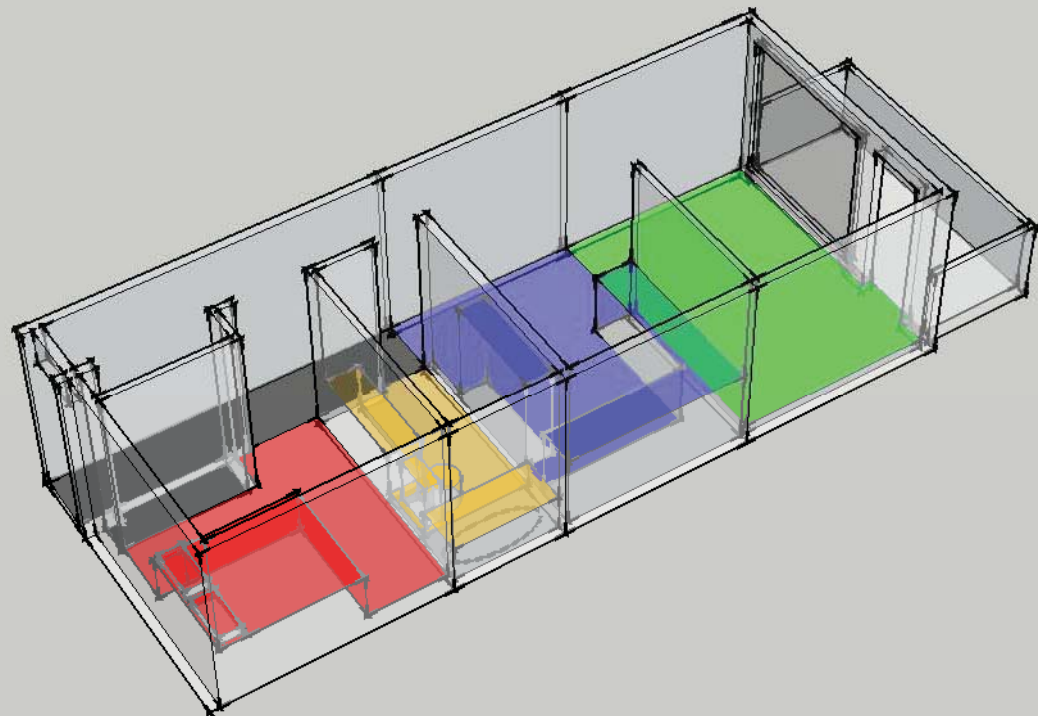
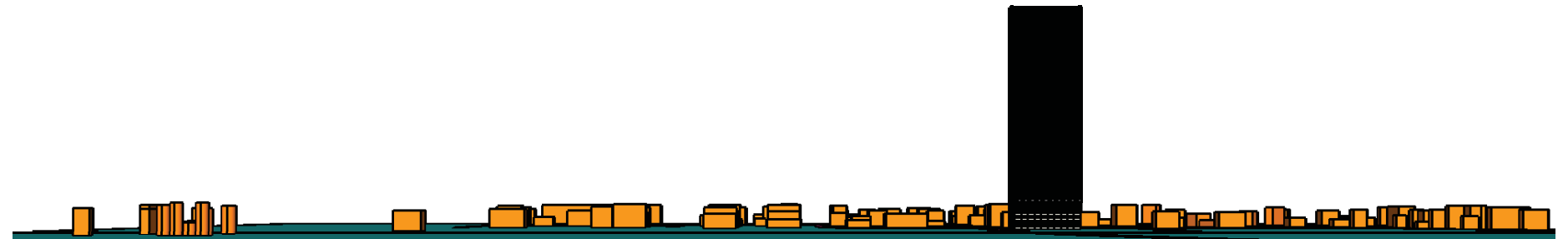


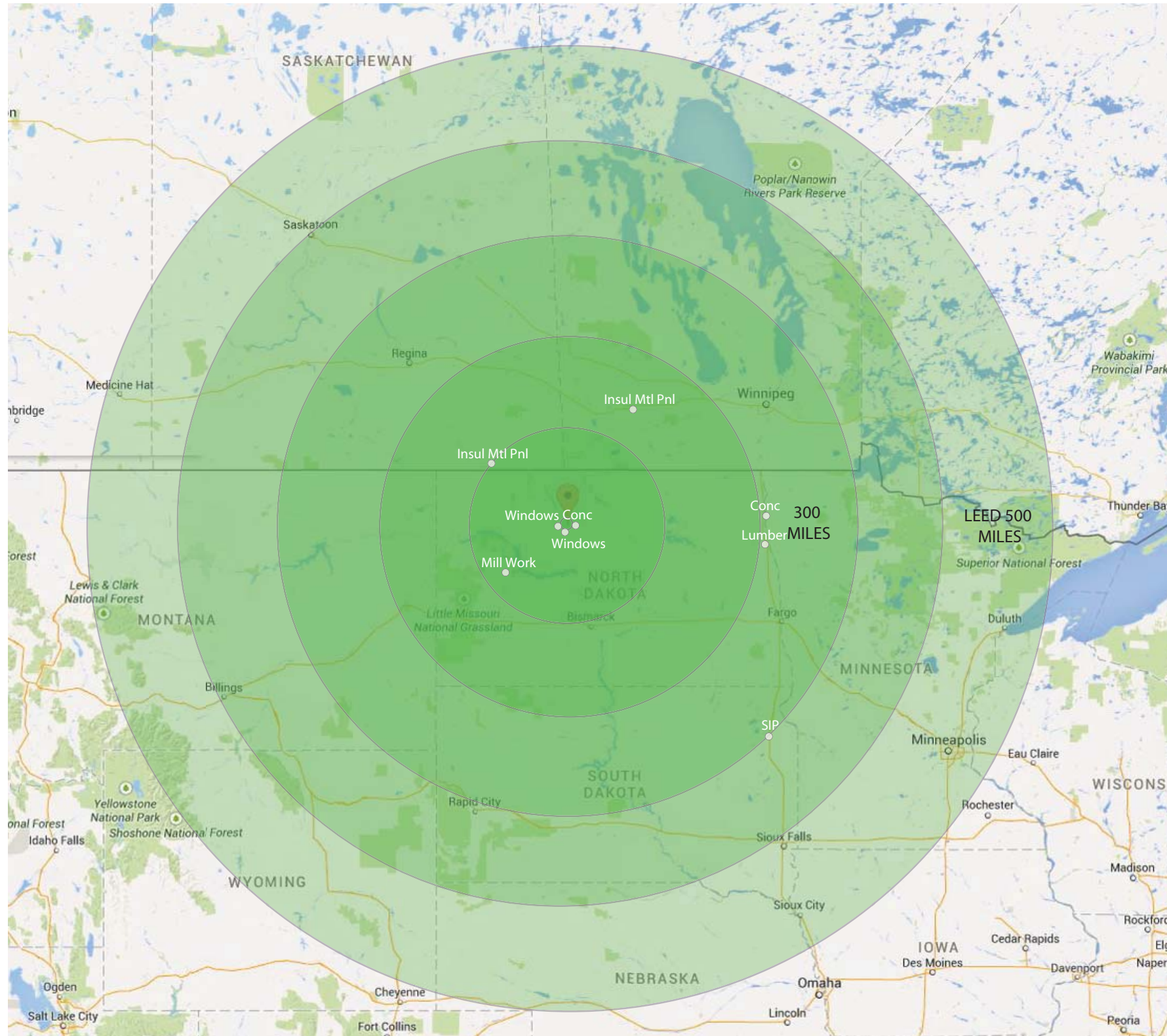
INHERITANCE



THE UNIT



MATERIAL DISTANCE



FIRE RATING

FIRE RATING



MAGNET SENSOR



Structural Insulated Panels

Typ fire rating. 1/2 hour to hour ratings

Exterior materials
wood, plastic, metal, cement-board siding, masonry stone
brick and or veneer.

RESCHECK RESULTS

Energy Code: 2009 IECC
Location: Minot, North Dakota
Construction Type: Multi-family
Project Type: New Construction
Conditioned Floor Area: 13,640 ft²
Glazing Area 8%
Climate Zone: 7 (9193 HDD)

Compliance: Passes using UA trade-off
18.7% Better Than Code
Maximum UA: 1335 Your UA: 1085



Site	Area SF	Cost
1	101671	\$915,039.00
2	52420	\$471,780.00
3	56830	\$511,470.00
4	130169	\$1,171,521.00
Total		\$3,069,810.00

Area Costs Costs Per Square foot 220

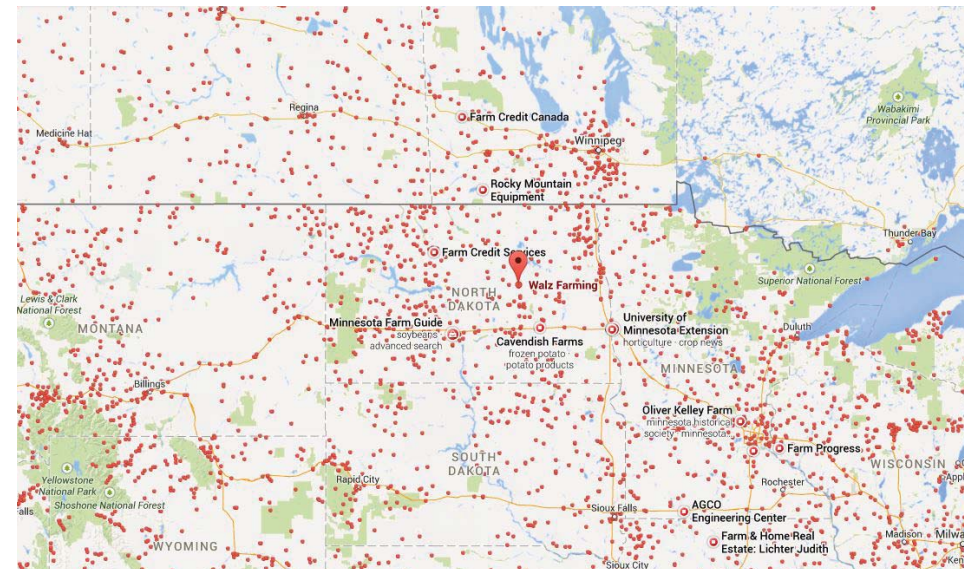
Units	#	Area per unit	Total Unit Area	Cost
4	168	1276	214368	\$47,160,960.00
3	52	1116	58032	\$12,767,040.00
2	87	841	73167	\$16,096,740.00
1	63	667	42021	\$9,244,620.00
Total Cost				\$85,269,360.00

LAND COST ESTIMATE

LAND ACQUISITION - \$3,069,810.00
 PROJECT COST PER SQUARE FOOT - \$9
 PREMIUM FOR PARKING SITE
 CONSTRUCTION CONTINGENCY FEE 5% - \$4,263,468.00
 DESIGN FEE 10% - \$8,953,282
 COST FEE - 101,555,920
 FINANCING BANK 6% - \$6,093,335

RECYCLED MATERIALS

1. Fiber Cement Siding
2. Wood from barns and rapid renewable source
 From the source below I counted approximately 150 cities then counted the first 10 towns. Those towns had 13 deserted house or barns. I then calculated approximately 200 usable bars or deserted homes only in ND. SD, MN, MT, WY and Canada would still fall within the 300 limit.
3. Carpets from post consumer Shaw
4. Blacks farm wood- Flooring



BUILDING COST

Type 3 - \$220.00 PER SQUARE FOOT

The exterior of a building constructed of SIPs can be finished like any wood-frame building: combustible (wood or plastic) or noncombustible (metal or cement-board) siding, masonry (stone or brick) veneer, or other materials.



<http://www.ghostsofnorthdakota.com/category/badlands/>
http://www2.iccsafe.org/states/newjersey/NJ_Building/PDFs/NJ_Bldg_Chapter6.pdf



UNITS AVAILABLE

1- UNIT

2- UNIT

In addition to the conformity of the unit no overall shape of the buildings will be the same. Materials will vary creating a unique neighborhood down town Minot.

Site 1-2

Units #	People
4	102
3	33
2	24
1	21
Total	180

Site 3-4

Units #	People
4	66
3	19
2	63
1	42
Total	190

Overall total 1065

3- UNIT

4 - UNIT

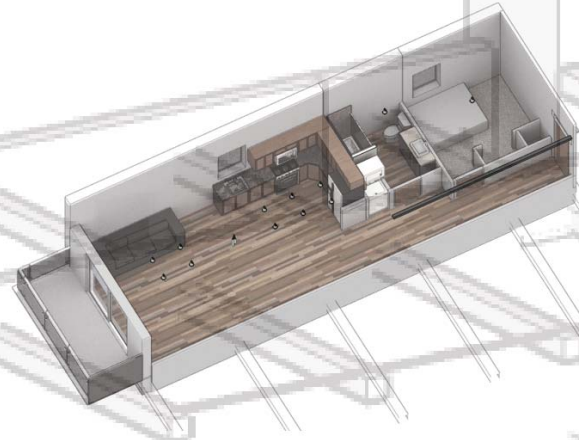
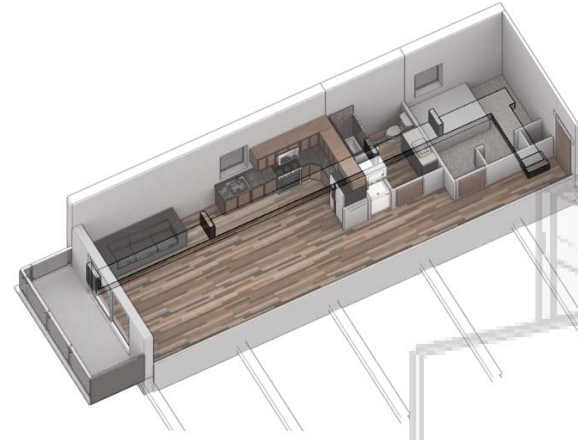
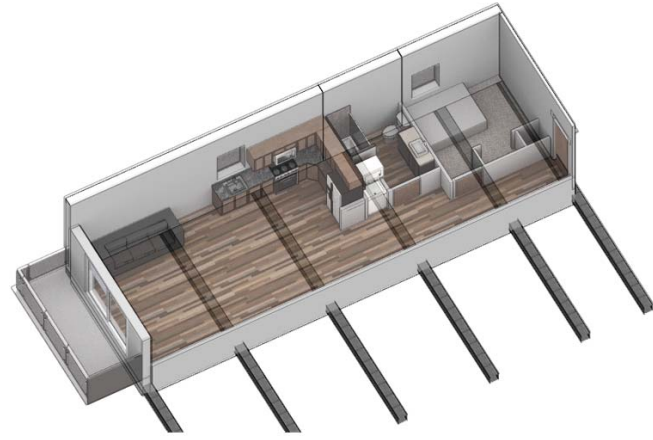
STRUCTURE

MECHANICAL

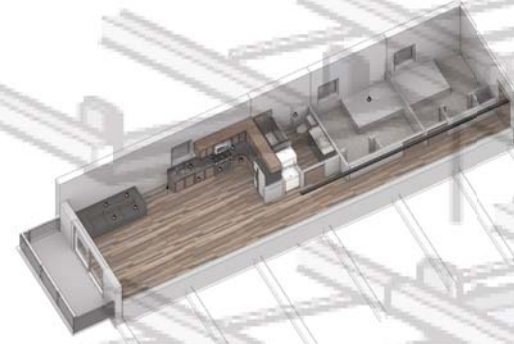
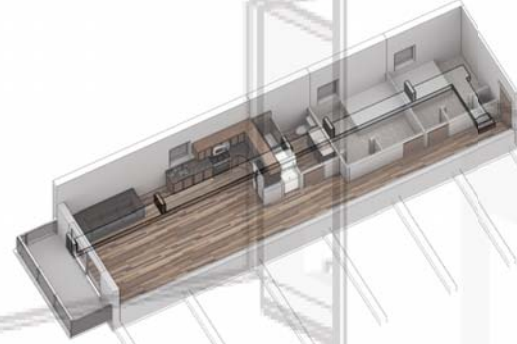
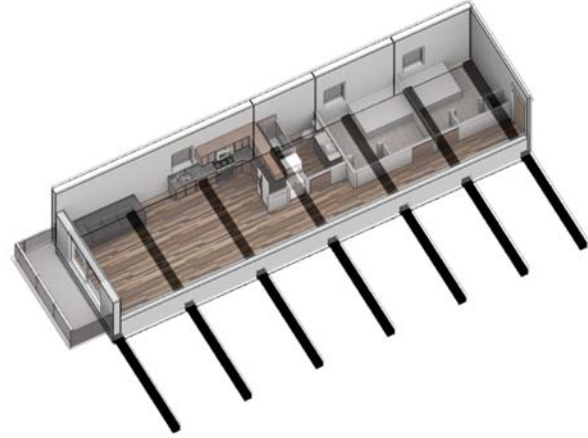
LIGHTING

SYSTEMS

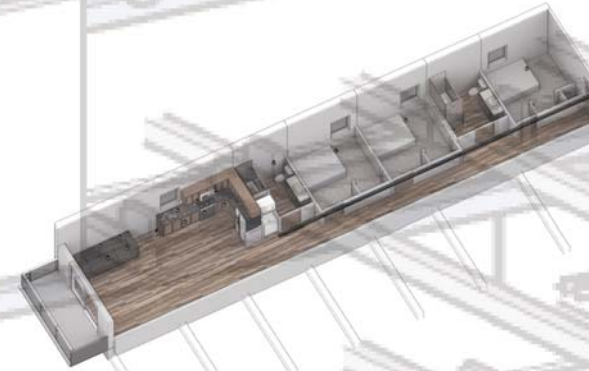
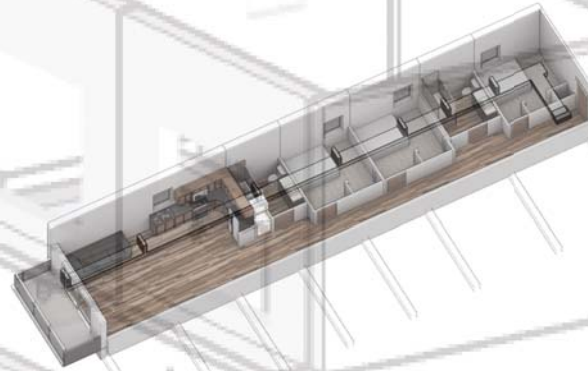
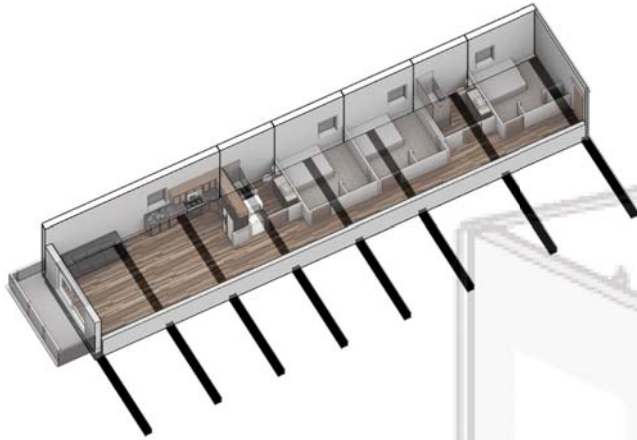
1-UNIT



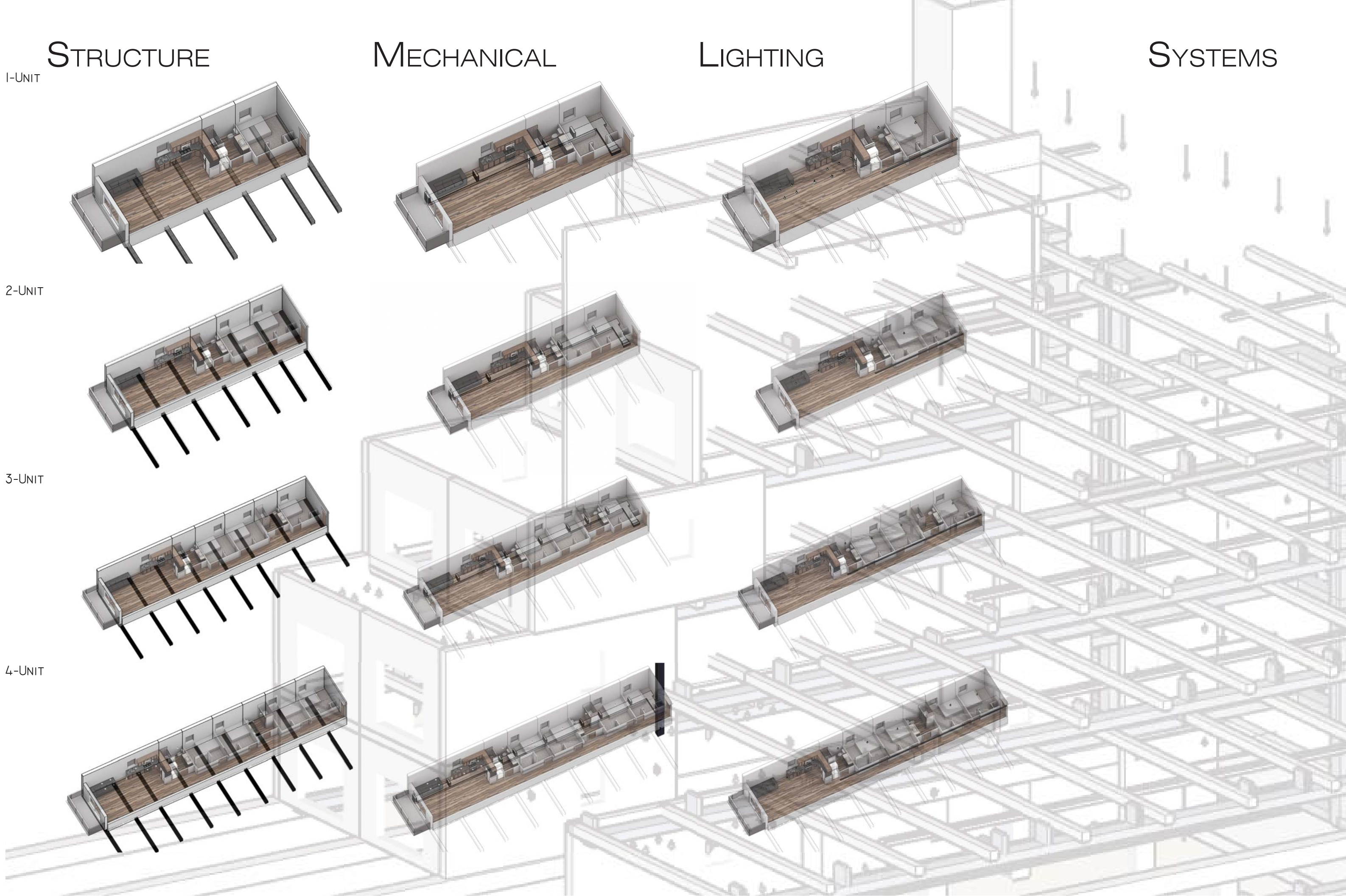
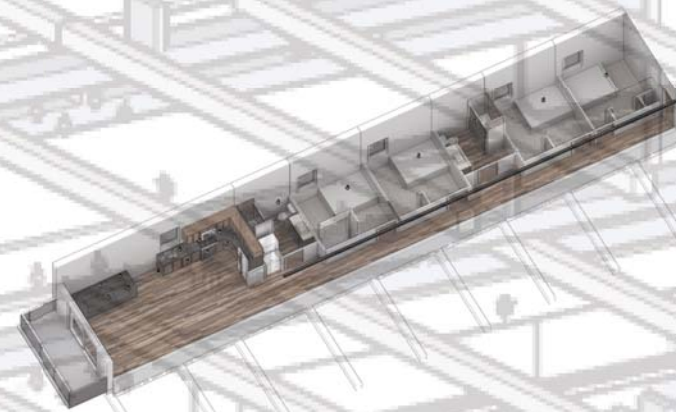
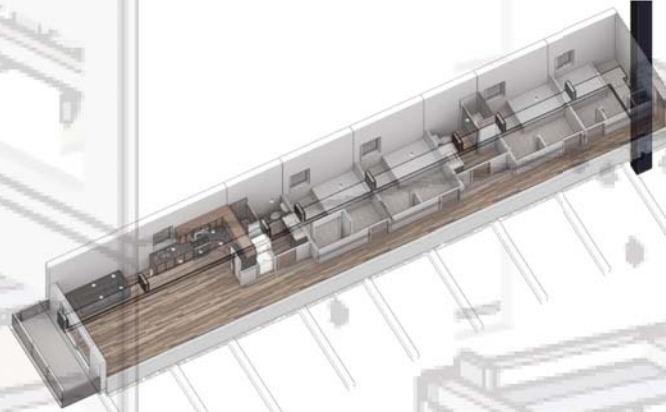
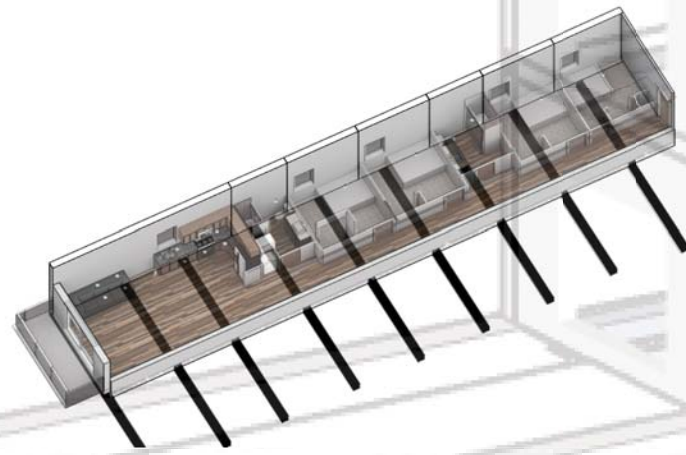
2-UNIT



3-UNIT

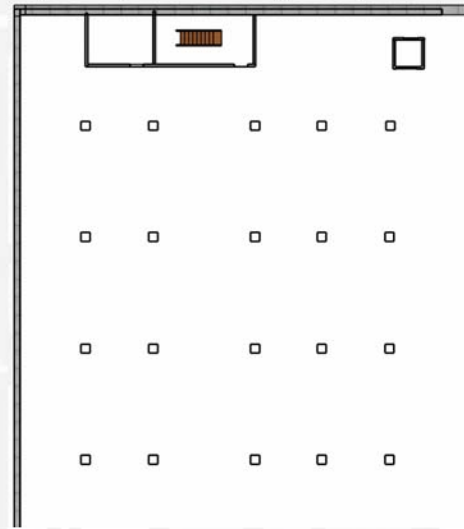


4-UNIT



TYPICAL FLOOR
PLANS UNITS VARY

Basement - Parking



1st Floor



2nd Floor



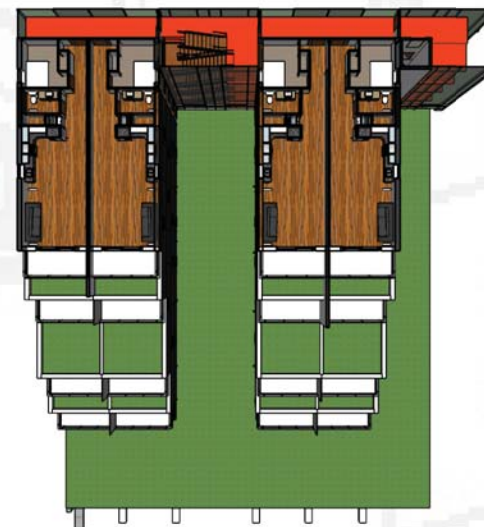
3rd Floor



4th Floor



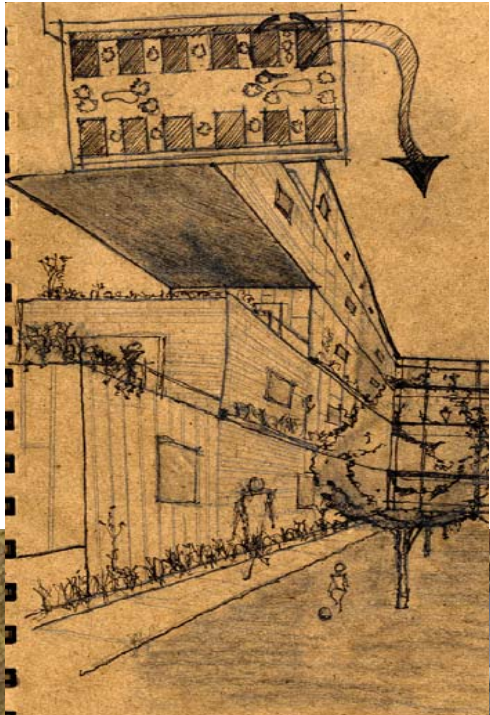
5th Floor



Roof Top Garden



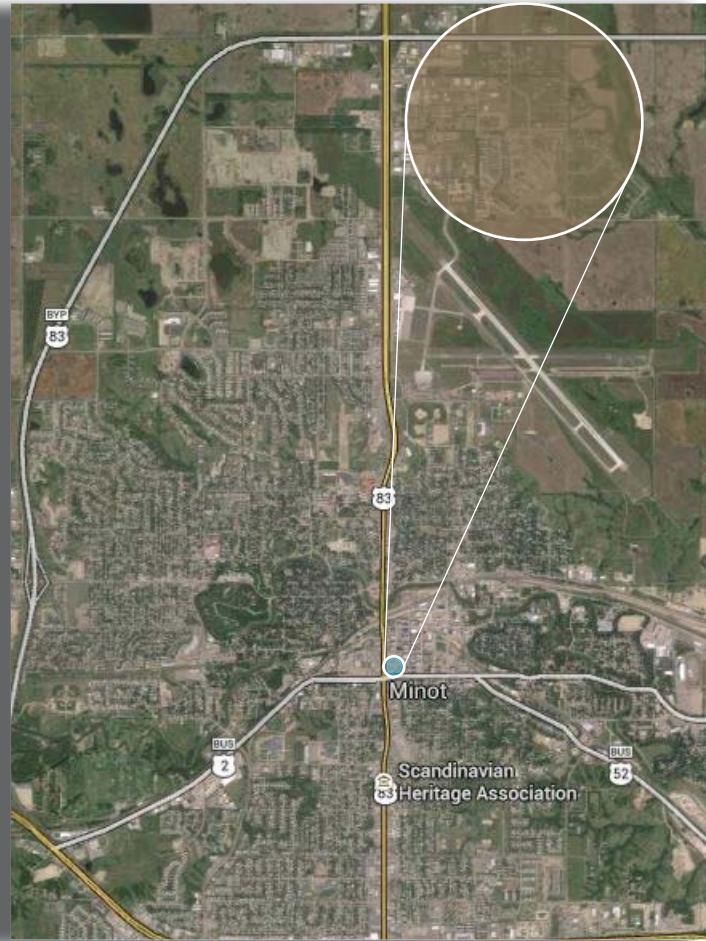
VARIETY OF
DESIGN FORMS



THE AFTERMATH

Reducing Urban Sprawl

- Concentrate area affecting less land
- Adding greens space to the environment
- Preserve the landscape / Farms
- Less risk of empty house

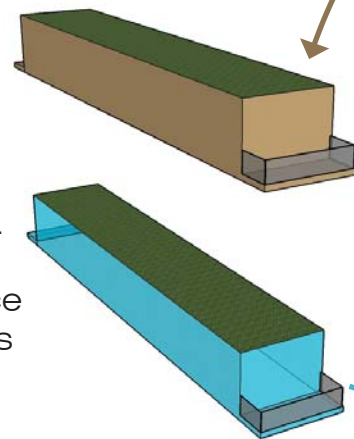


SITE PLAN



The Swap

Empty units convert to Commercial, Retail or Restaurant spaces. They may also be bought for more space from neighboring units



ELEVATIONS

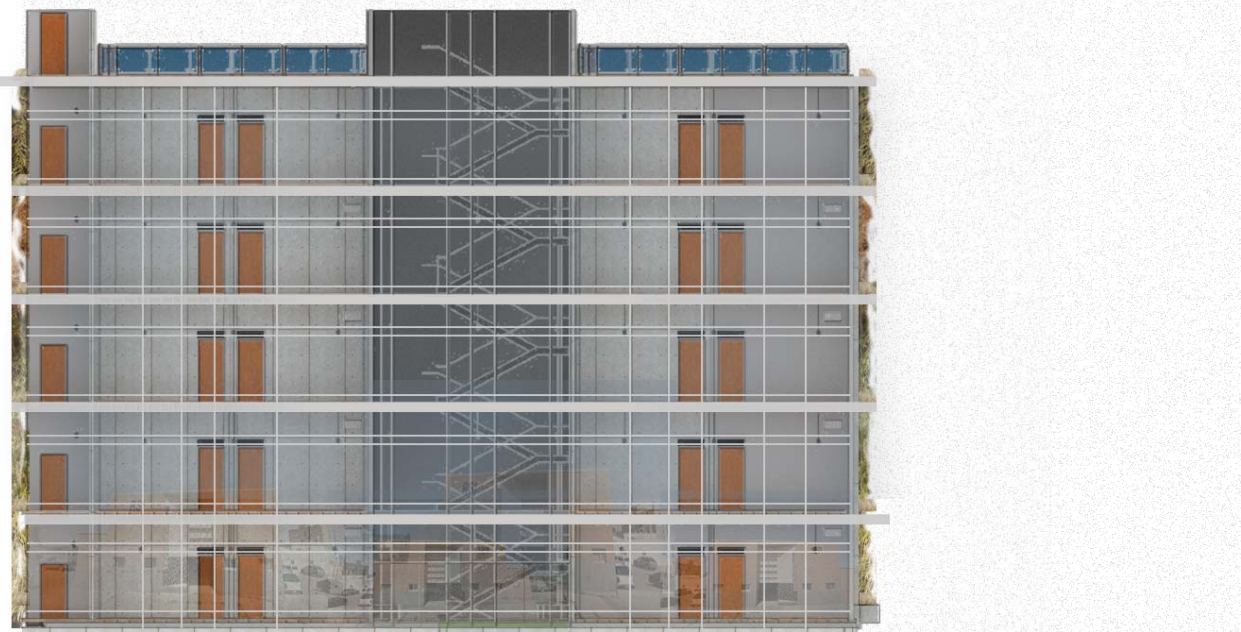
West



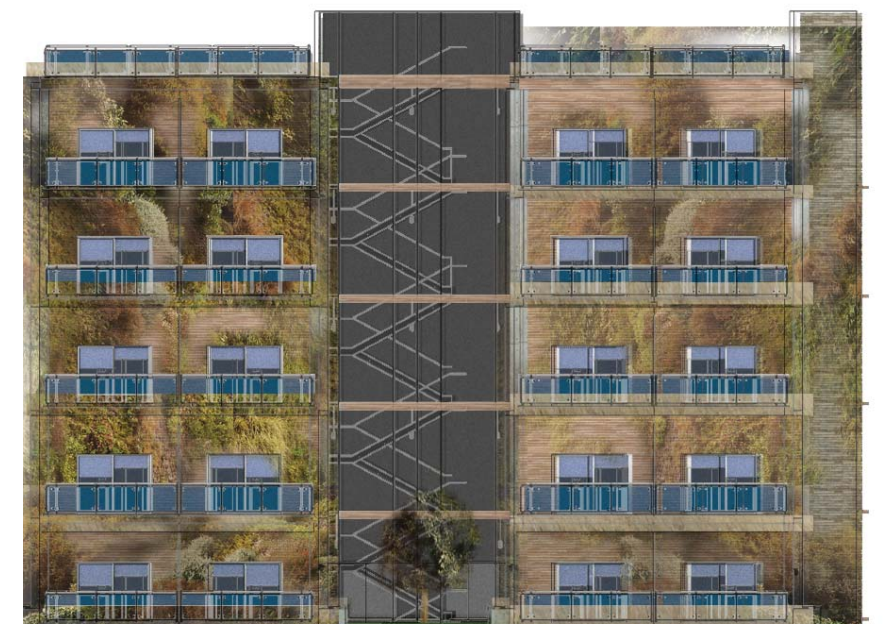
East



North



South



LONGITUDINAL SECTION



Systems



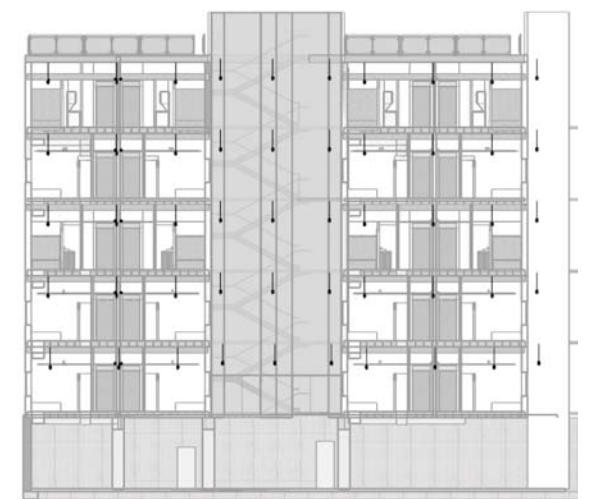
Structure



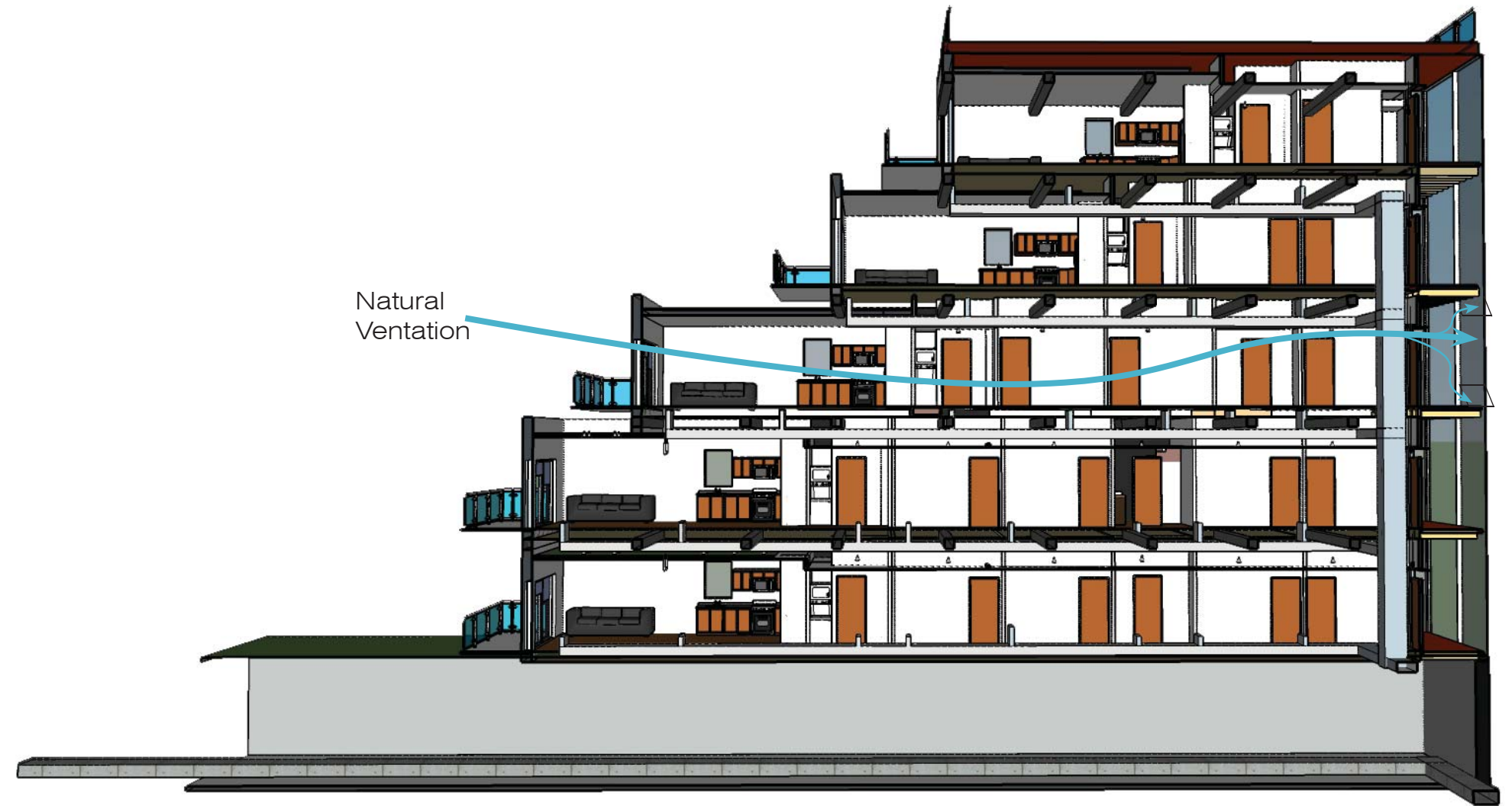
HVAC



Lighting



HORIZONTAL SECTION

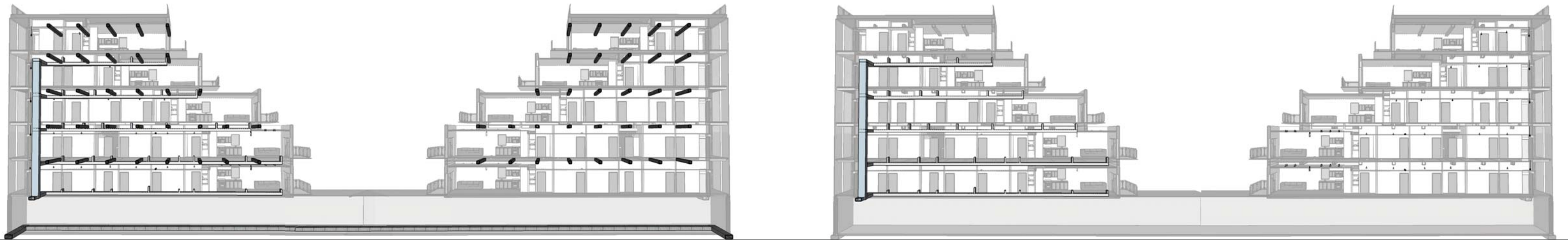


Systems

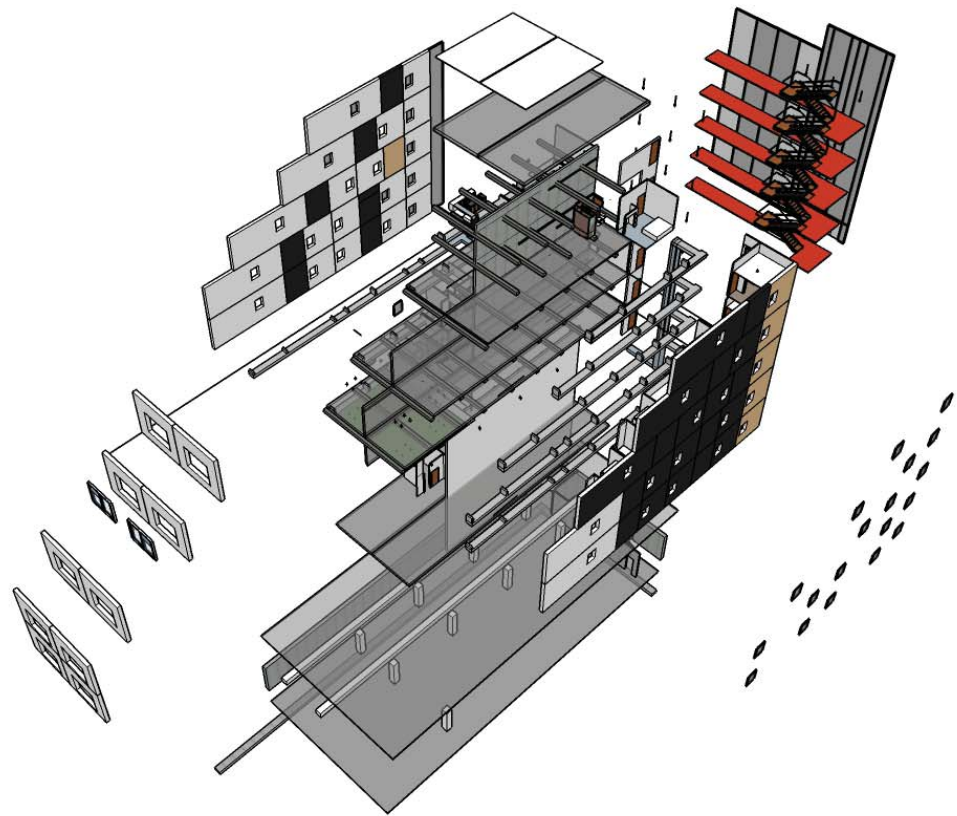
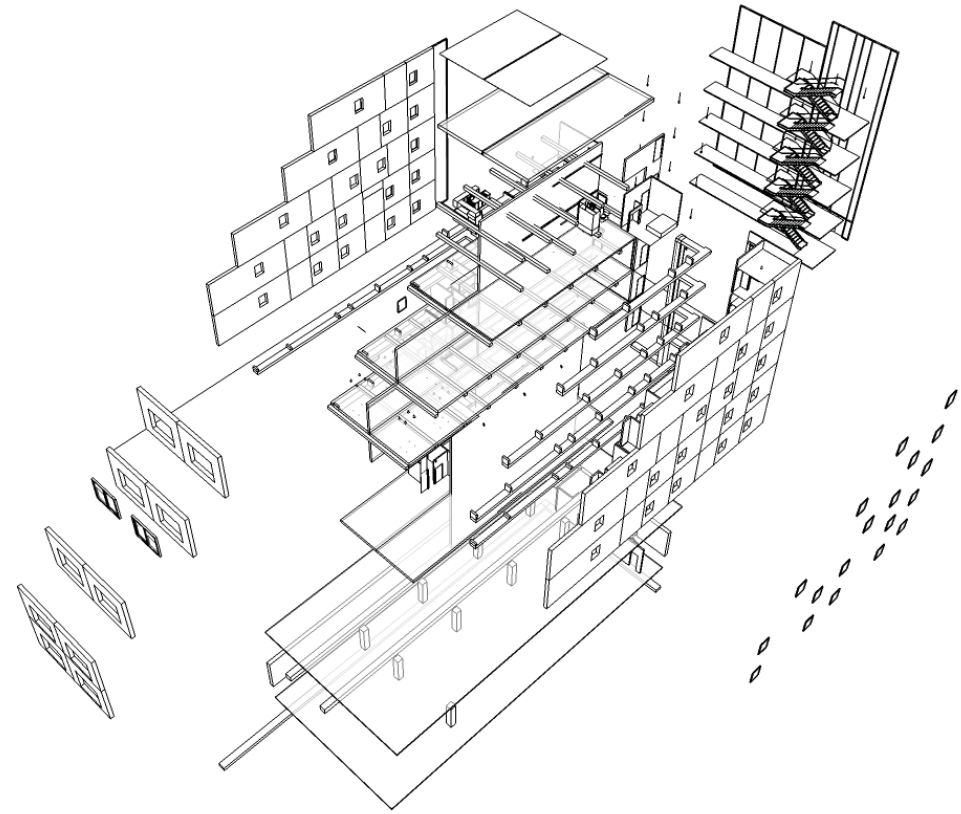
Structure

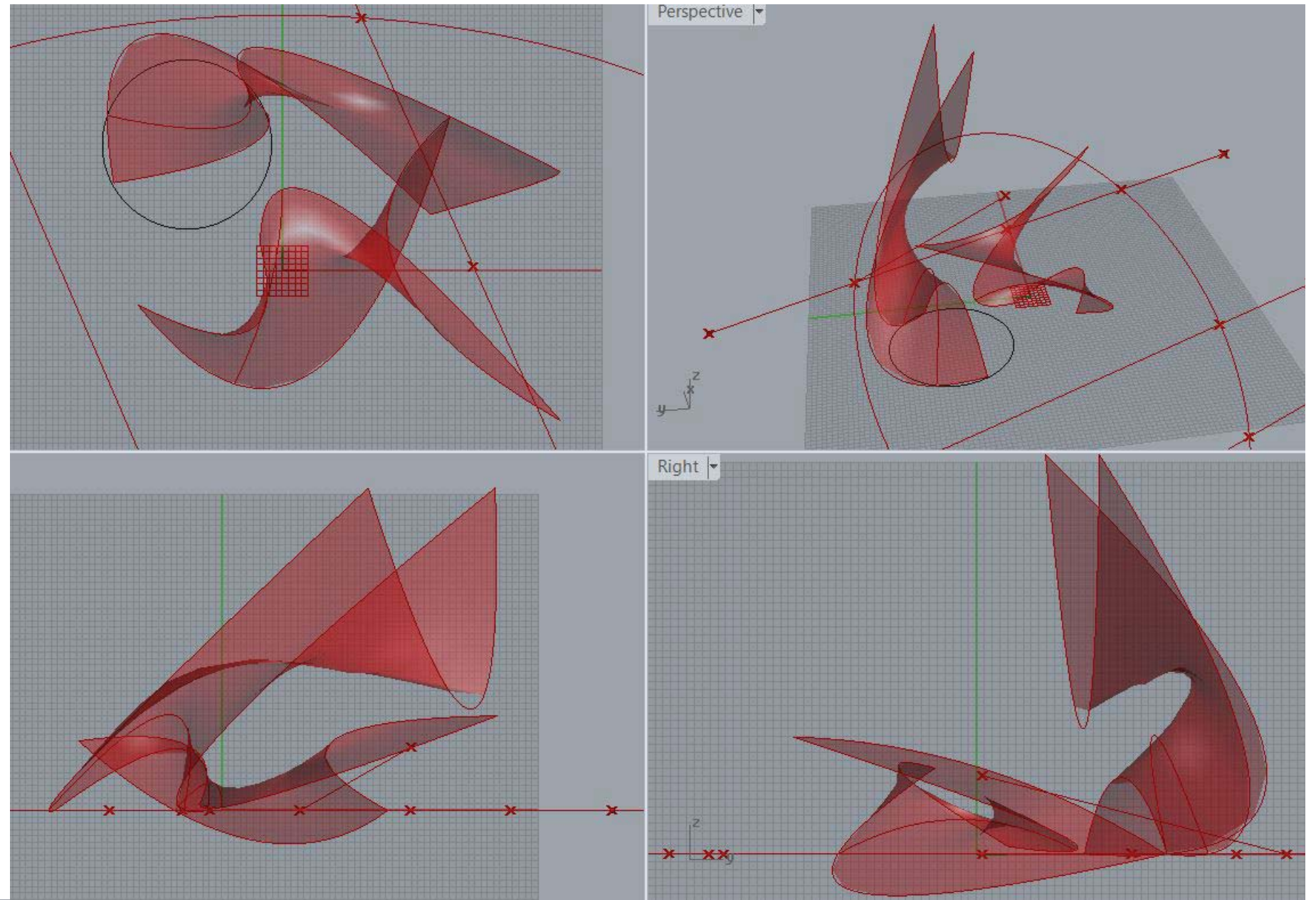
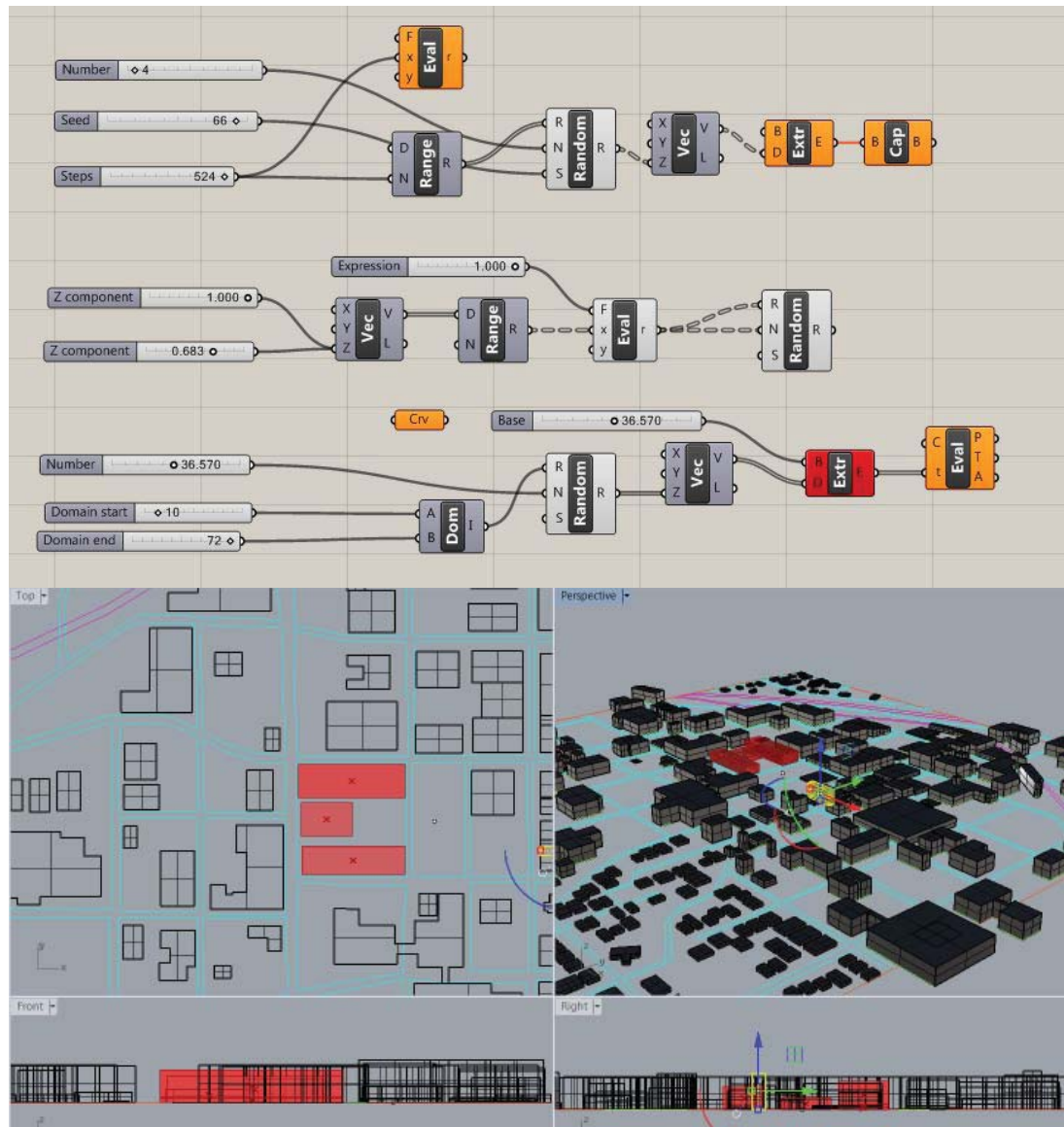
HVAC

Lighting



LONGITUDINAL SECTION





RHINO/
GRASSHOPPER

