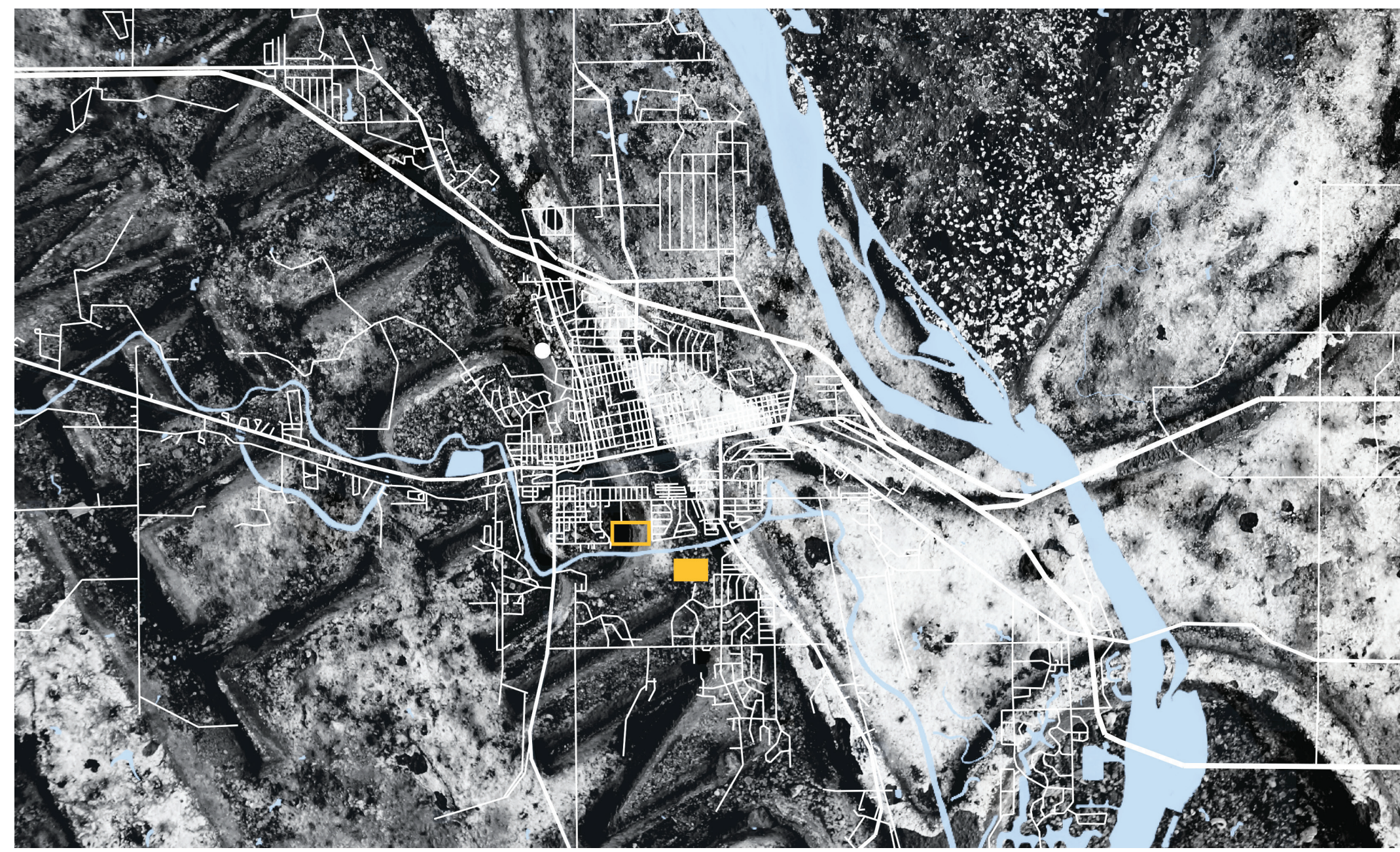


SITE MAP || SCALE 1"=80'



MANDAN, ND



MANDAN MAP || SCALE 1"=80'



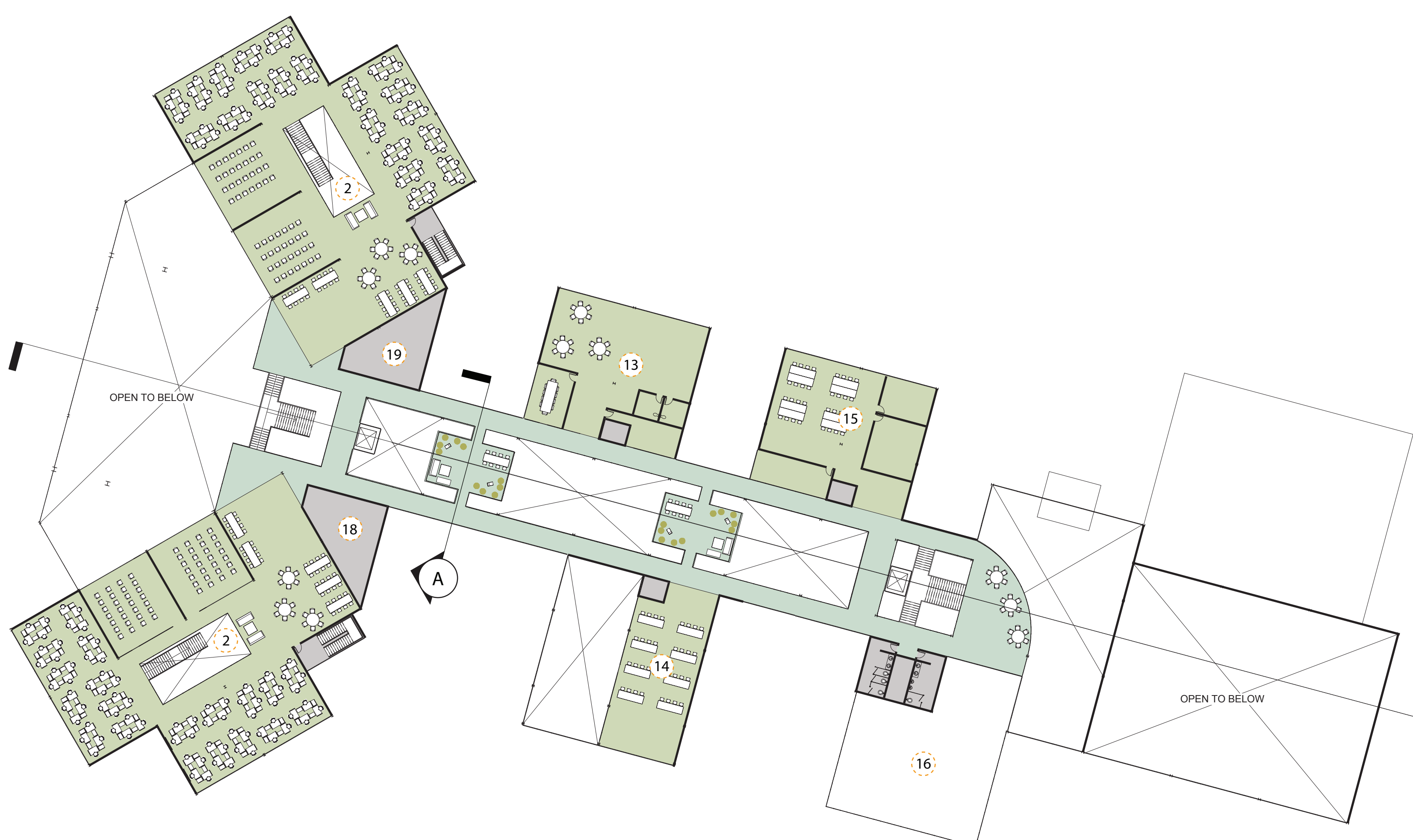
VIEW OF HEART RIVER



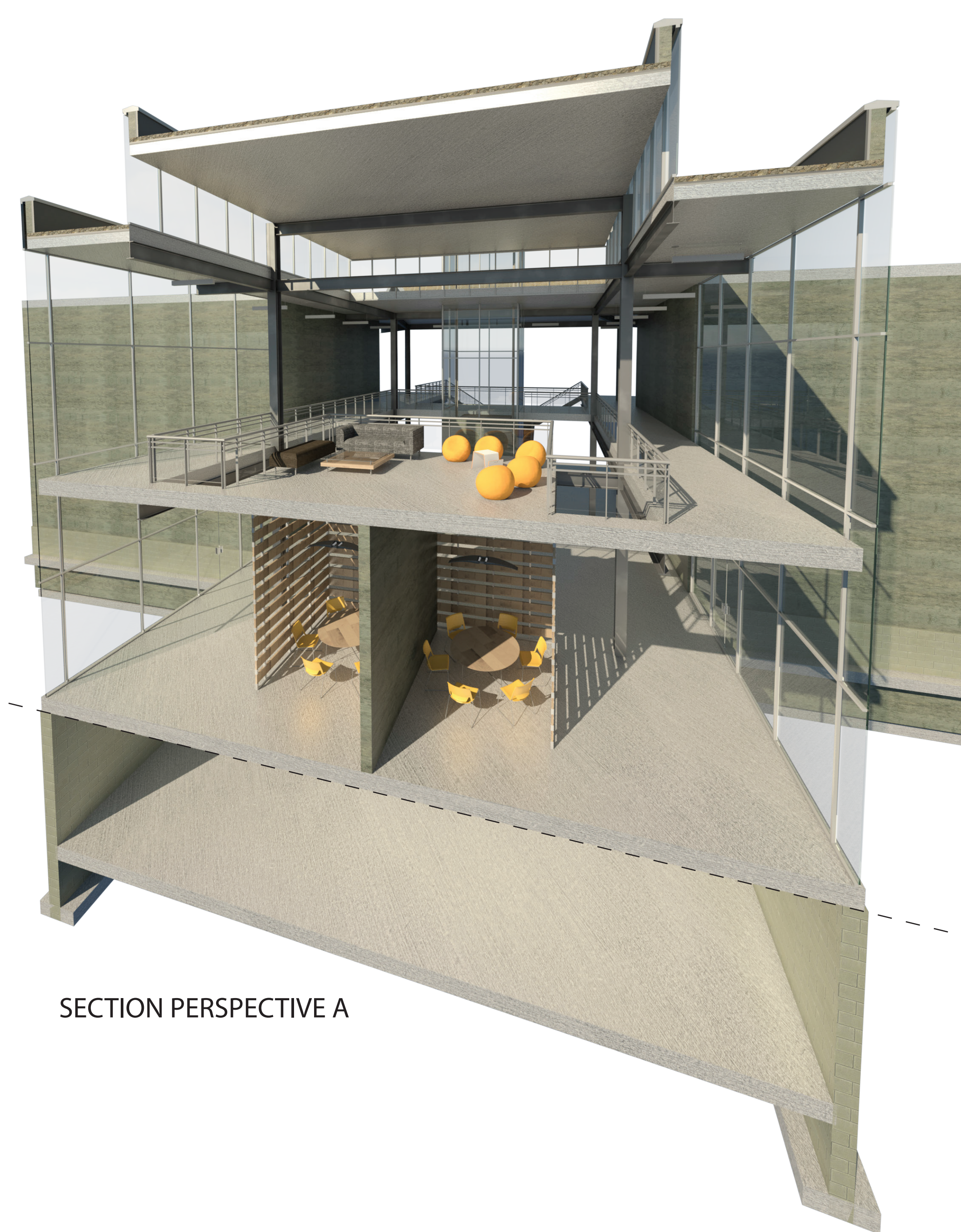
MAIN ENTRY

A school is an institution designed for the teaching of students, yet so often our school buildings do little to suggest that any learning occurs inside. Our schools should be designed in a way that enhances the learning experience and encourages students to take control of their education. The Mandan Alternative Learning Center strives for a new approach to education design, one that seeks a stronger connection between the program and the place.

The Mandan Alternative Learning Center serves as one possible solution for what a school could become if specific design concepts are applied throughout the design process. Some of the concepts considered in this project include: air quality, natural lighting and lighting levels, wayfinding and circulation, connection to nature, active design, social interaction, flexible design, occupant control, site location and context, etc. Research has found many of these design concepts to have a positive influence upon both student learning and productivity, as well as student wellbeing. All of which are essential for future success, however it may be defined. The goal of this project is to reshape the way in which our schools are designed and experienced to enhance student learning and wellbeing.



LEVEL 2 || SCALE 1"=30'

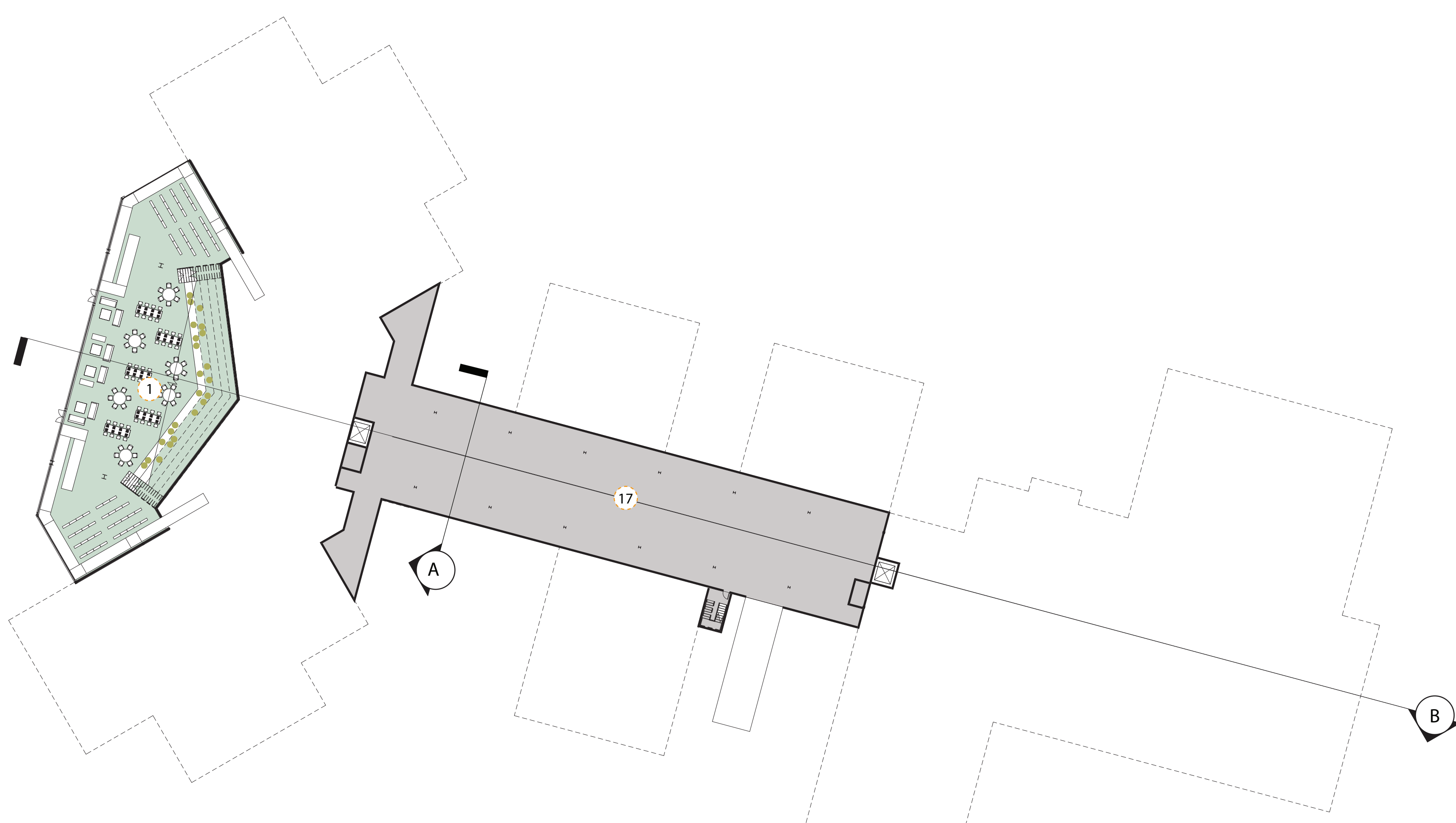


SECTION PERSPECTIVE A



LEVEL 1 || SCALE 1"=30'

- FLOOR PLAN KEY**
- 1 THE COMMONS
 - 2 STUDIOS
 - 3 THE HUB
 - 4 SCIENCE LABS
 - 5 CAFETERIA
 - 6 MUSIC DEPT
 - 7 ADMINISTRATION
 - 8 GYMNASIUM
 - 9 LOCKER ROOMS
 - 10 ATHLETIC OFFICE
 - 11 DANCE STUDIO
 - 12 WEIGHT ROOM
 - 13 SPECIAL EDUCATION
 - 14 CULINARY LAB
 - 15 ART DEPT
 - 16 OUTDOOR PATIO
 - 17 MECHANICAL ROOM
 - 18 TELECOM ROOM
 - 19 ELECTRICAL ROOM
- COLLABORATION SPACE
 - CLASSROOM/STUDIO
 - DINING SERVICES
 - ADMINISTRATION
 - ATHLETICS
 - SUPPORT



LOWER LEVEL || SCALE 1"=30'



BRIDGING PROGRAM AND PLACE

AN ALTERNATIVE LEARNING CENTER FOR MANDAN, ND



