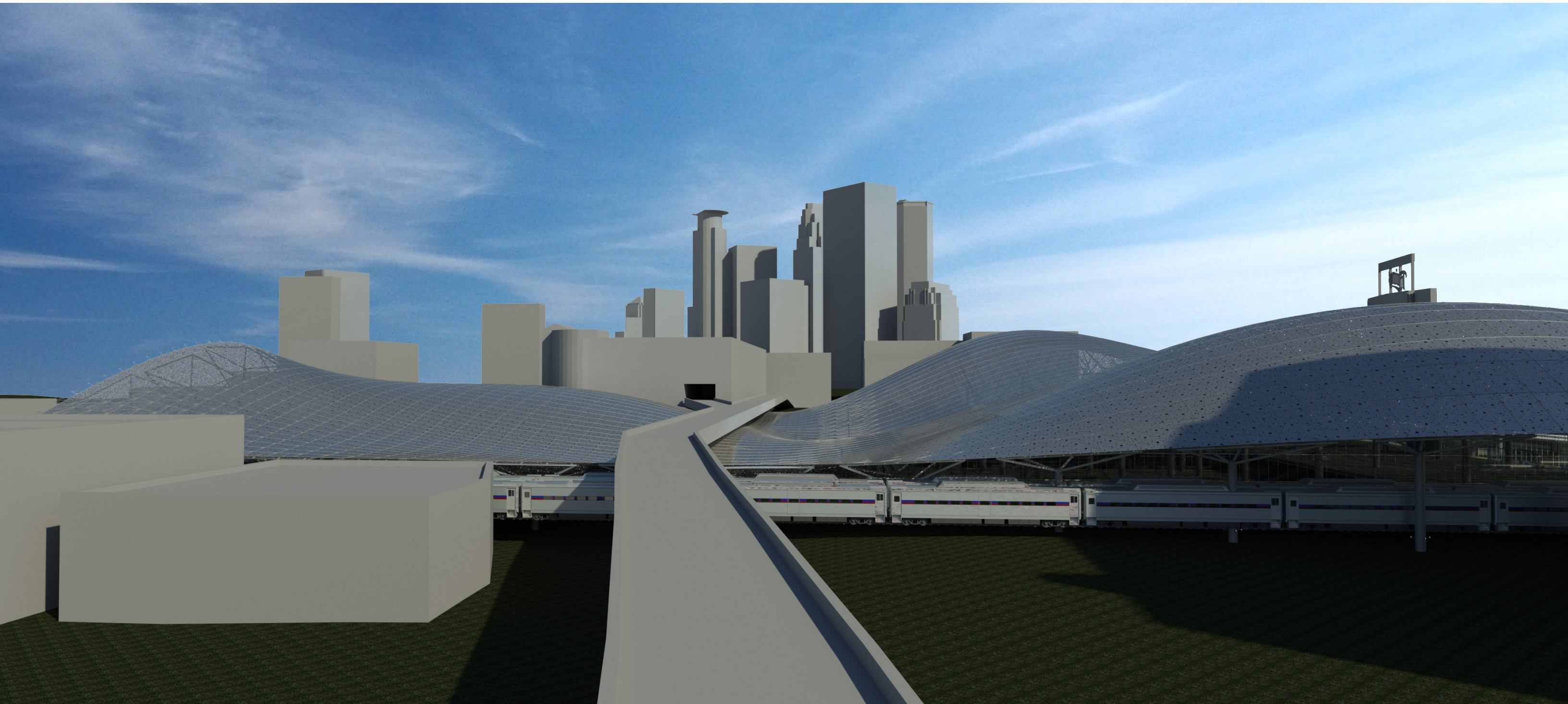


# MINNEAPOLIS TRANSPORTATION TERMINAL

---

LOGAN DIEHL - SPRING 2015





## THEORETICAL PREMISE:

THE PURPOSE OF THIS THESIS IS TO EXAMINE THE WAY THAT ALL THE DIFFERENT MODES OF TRANSPORT IN AN URBAN TRANSPORTATION SYSTEM CAN BE BROUGHT TOGETHER INTO ONE SEAMLESS SOLUTION.

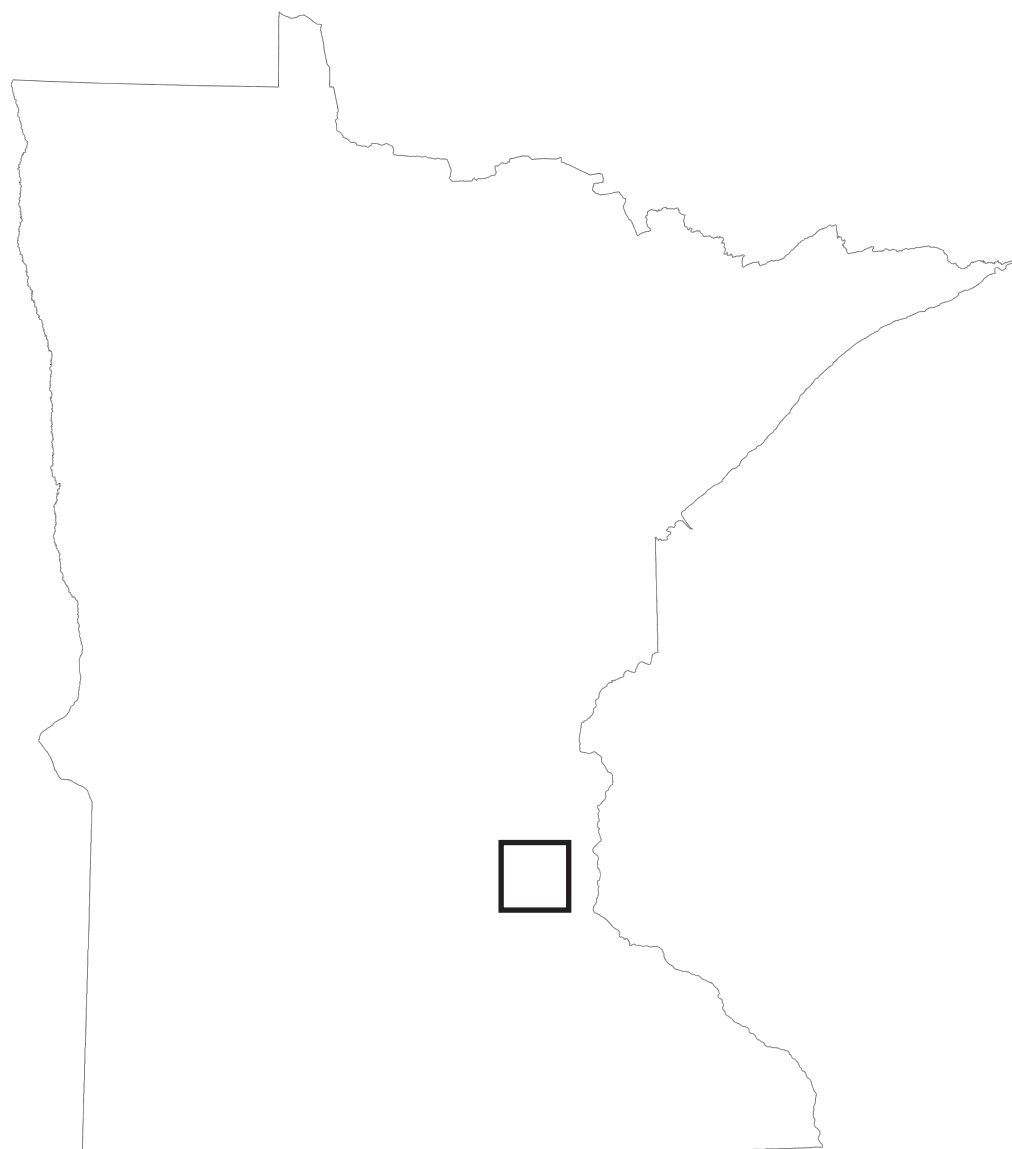
### INFORMATION:

THIS THESIS IS SET IN THE METROPOLITAN AREA OF THE TWIN CITIES, MINNEAPOLIS/ST. PAUL. LINKING TRAIN, LIGHT RAIL, BUS, AUTOMOTIVE AND PEDESTRIAN TRAFFIC WILL SET MINNEAPOLIS/ST. PAUL APART FROM OTHER METROS AND PROVIDE A WAY FOR ITS CITIZENS TO MOVE QUICKLY AND EFFICIENTLY AROUND THE URBAN AREA.

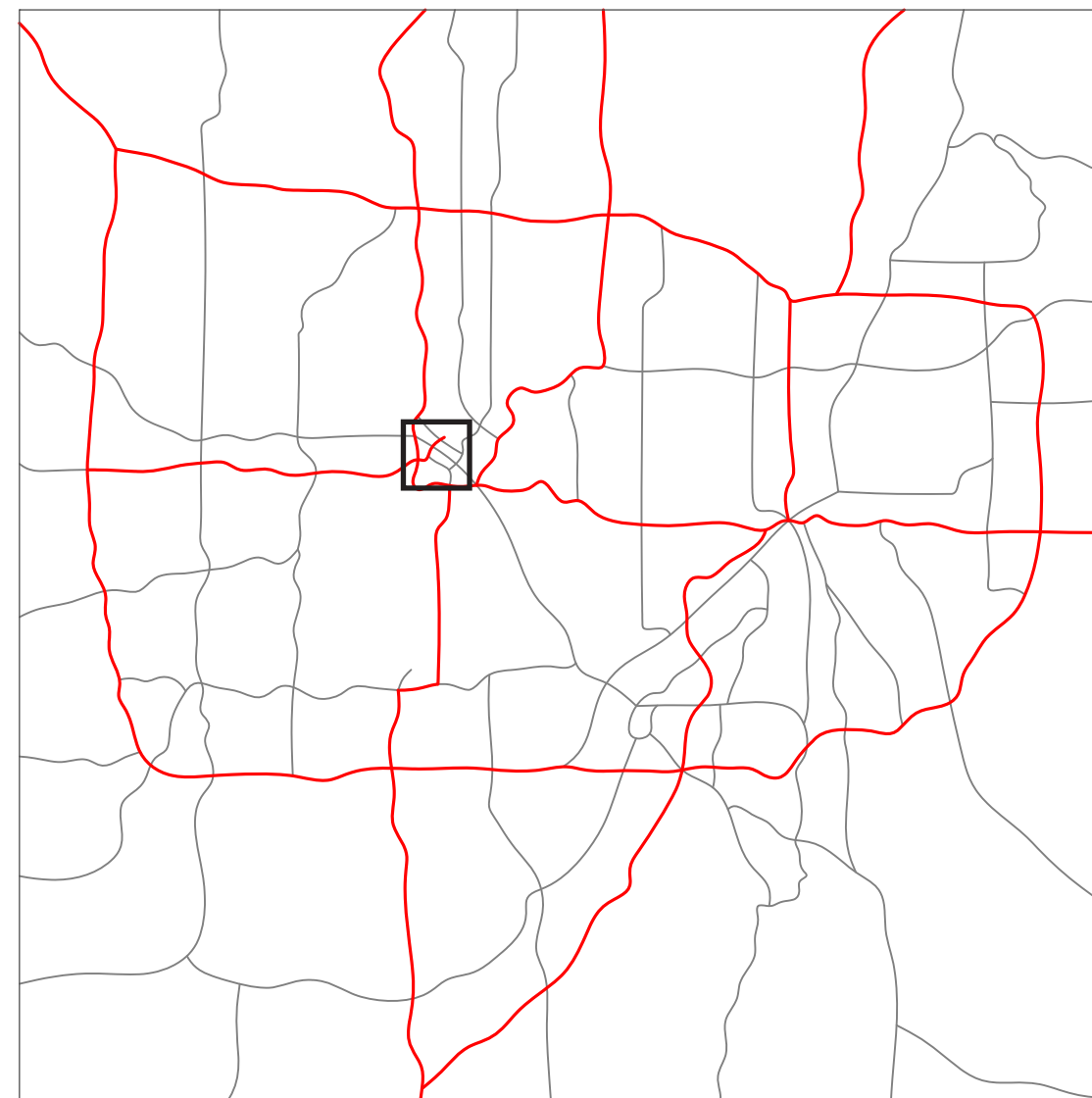
THE TWIN CITIES HAVE ALWAYS BEEN ON THE CUTTING EDGE OF DIFFERENT TRANSPORTATION TYPES. IN THE PAST, MUCH OF THE TWIN CITIES, MINNEAPOLIS & ST. PAUL WERE INTERCONNECTED BY STREETCAR SYSTEMS, AUTOMOBILE HIGHWAYS AND ROADS, AND A LARGE BUS SYSTEM. WITH THE ADDITION OF THE LIGHT RAIL IN THE TWIN CITIES METROPOLITAN AREA IN THE LAST FEW YEARS, THE NECESSITY FOR AN URBAN TRANSPORTATION TERMINAL HAS INCREASED. WITH THE PROPOSED TWIN CITIES TRANSPORTATION TERMINAL, AUTOMOBILE TRAFFIC, BUS TRAFFIC, LIGHT RAIL, AND FOOT TRAFFIC WILL ALL HAVE A CENTRALIZED LOCATION TO MEET AND FACILITATE QUICK AND EFFICIENT TRANSFER BETWEEN DIFFERENT MODES OF TRANSPORTATION.

WITH THE SITE BEING IN CLOSE PROXIMITY TO THE MAIN HEART OF COMMERCIAL BUSINESS OF DOWNTOWN MINNEAPOLIS, NEXT TO TARGET FIELD, AND A BLOCK AWAY FROM TARGET CENTER, IT IS IN A PRIME LOCATION FOR A TRANSPORTATION TERMINAL. PEOPLE COMING IN TO THE AREA FOR WORK OR PLEASURE, WILL BOTH BE ABLE TO BENEFIT FROM THIS PROPOSED SOLUTION.



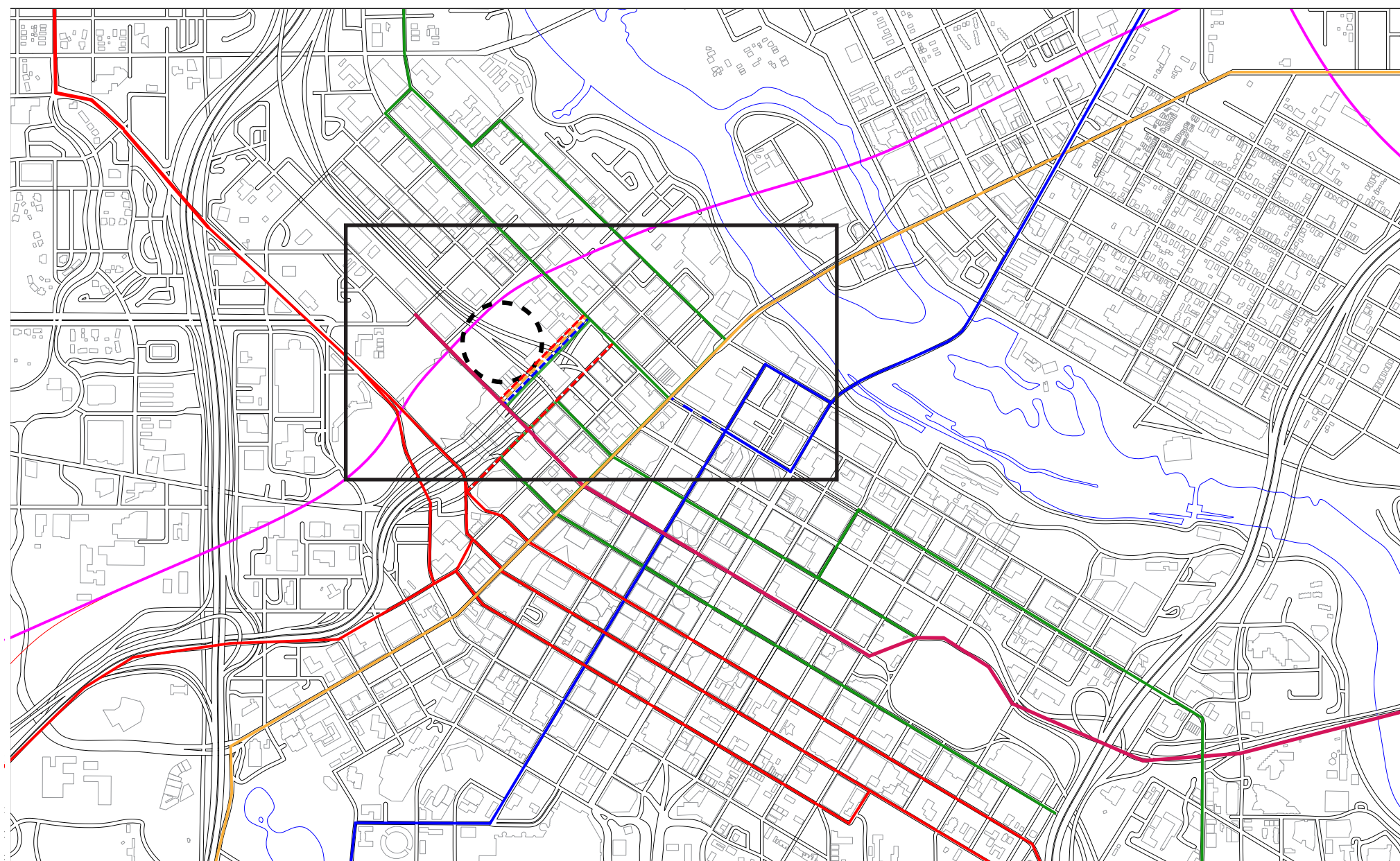


MINNESOTA



TWIN CITIES METRO AREA - MAIN ROADWAYS SHOWN

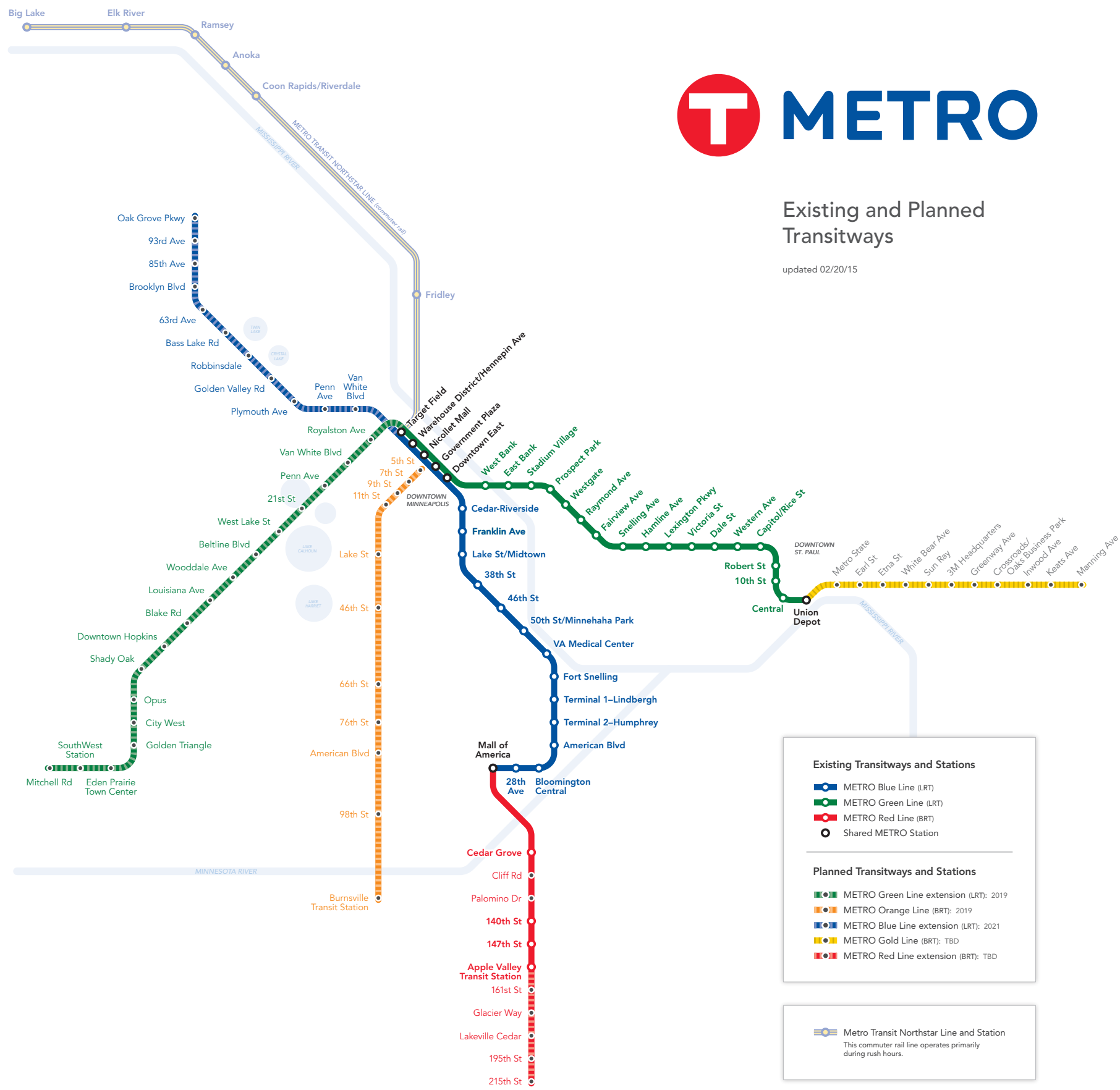




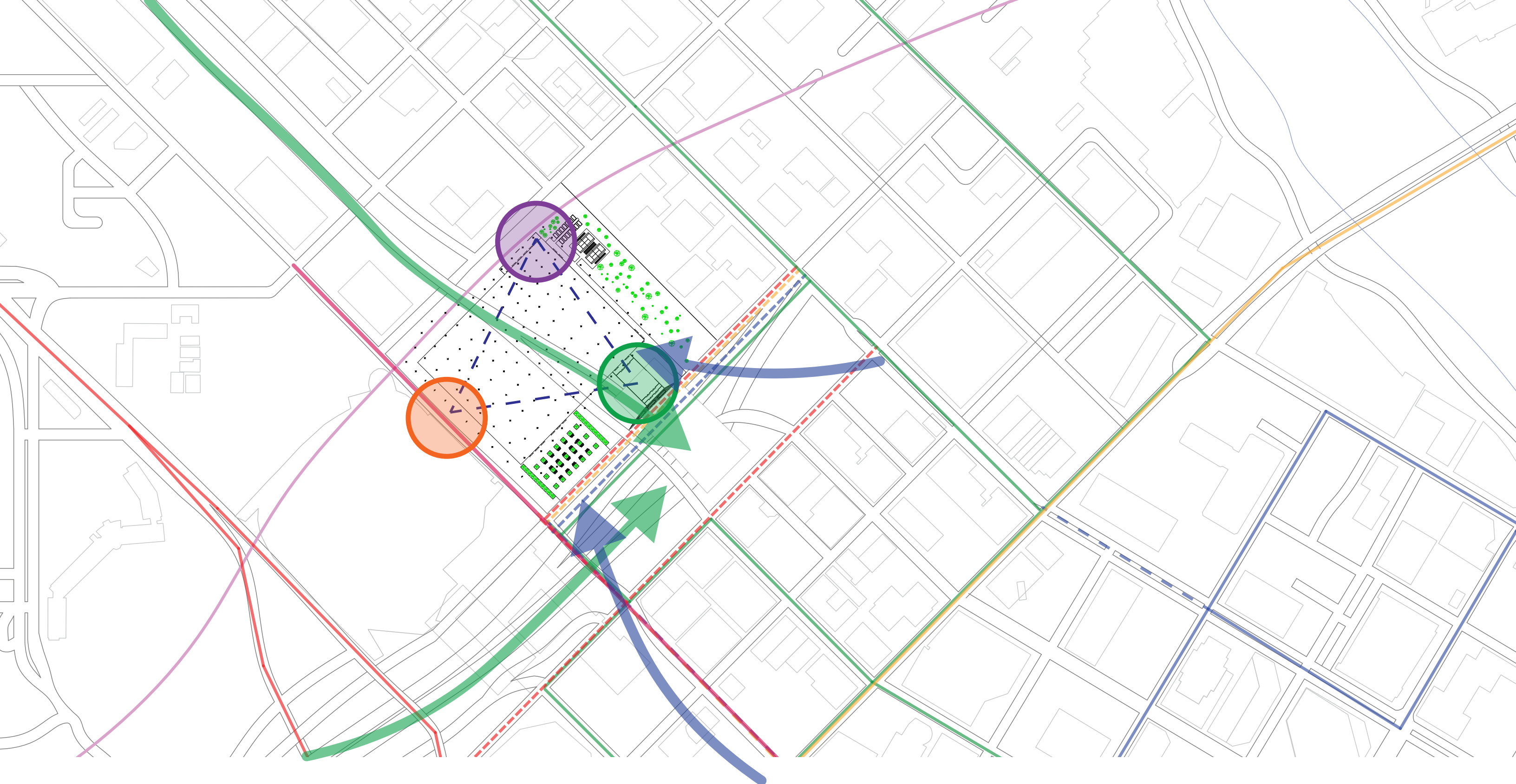
- BUS LINES: 4, 6, 12, 61
  - BUS LINES: 3, 7, 14, 16, 50, 94
  - BUS LINES: 10, 11, 17, 18, 25
  - BUS LINES: 5, 9, 19, 22
  - LIGHT RAIL LINES: BLUE AND GREEN
  - COMMUTER TRAIN LINE
- ALL PROPOSED ADDITIONS TO BUS LINES SHOWN AS A DASHED LINE

DOWNTOWN MINNEAPOLIS WITH BUS LINES, LIGHT RAIL AND TRAIN LINES IN COLOR





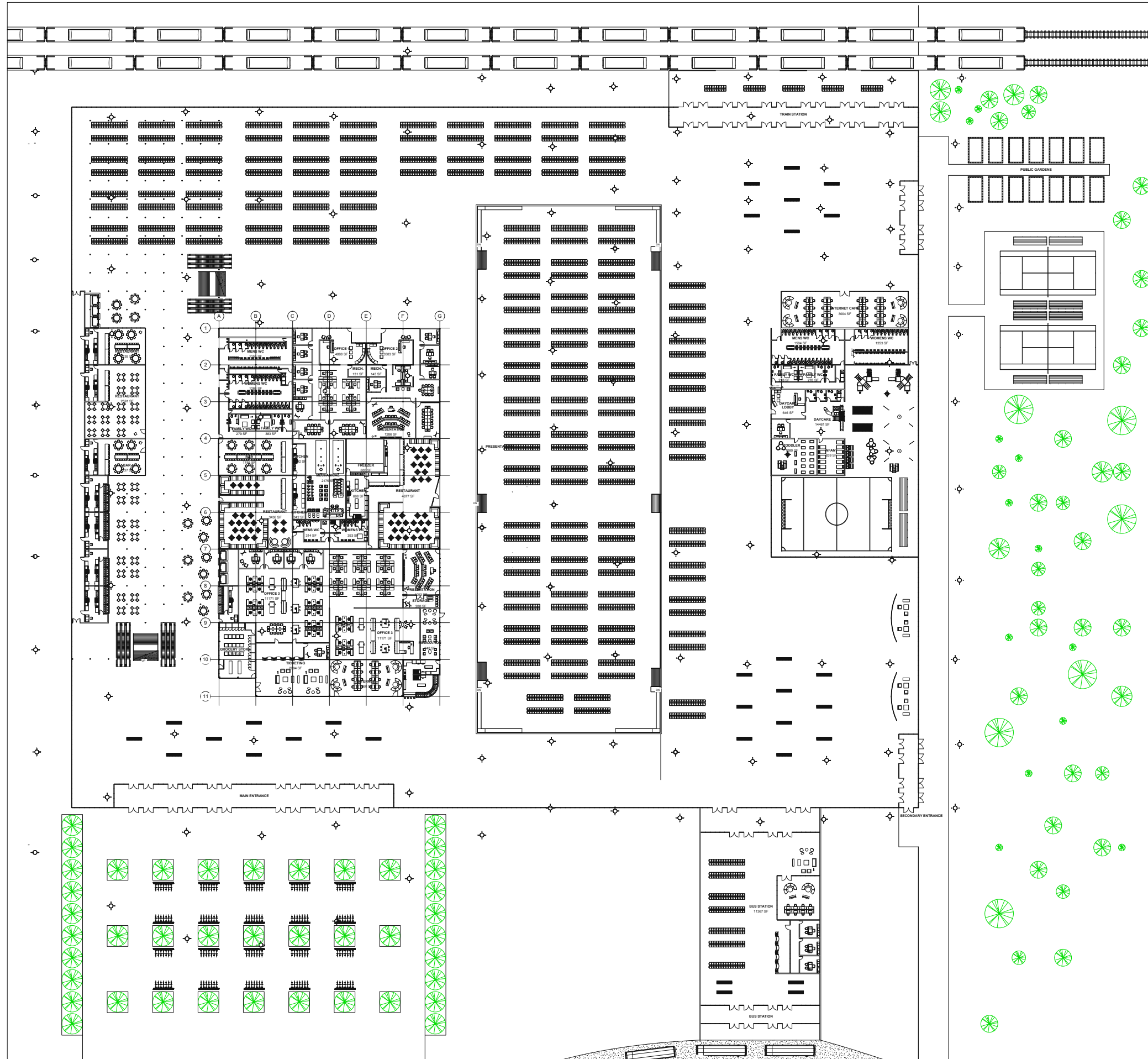




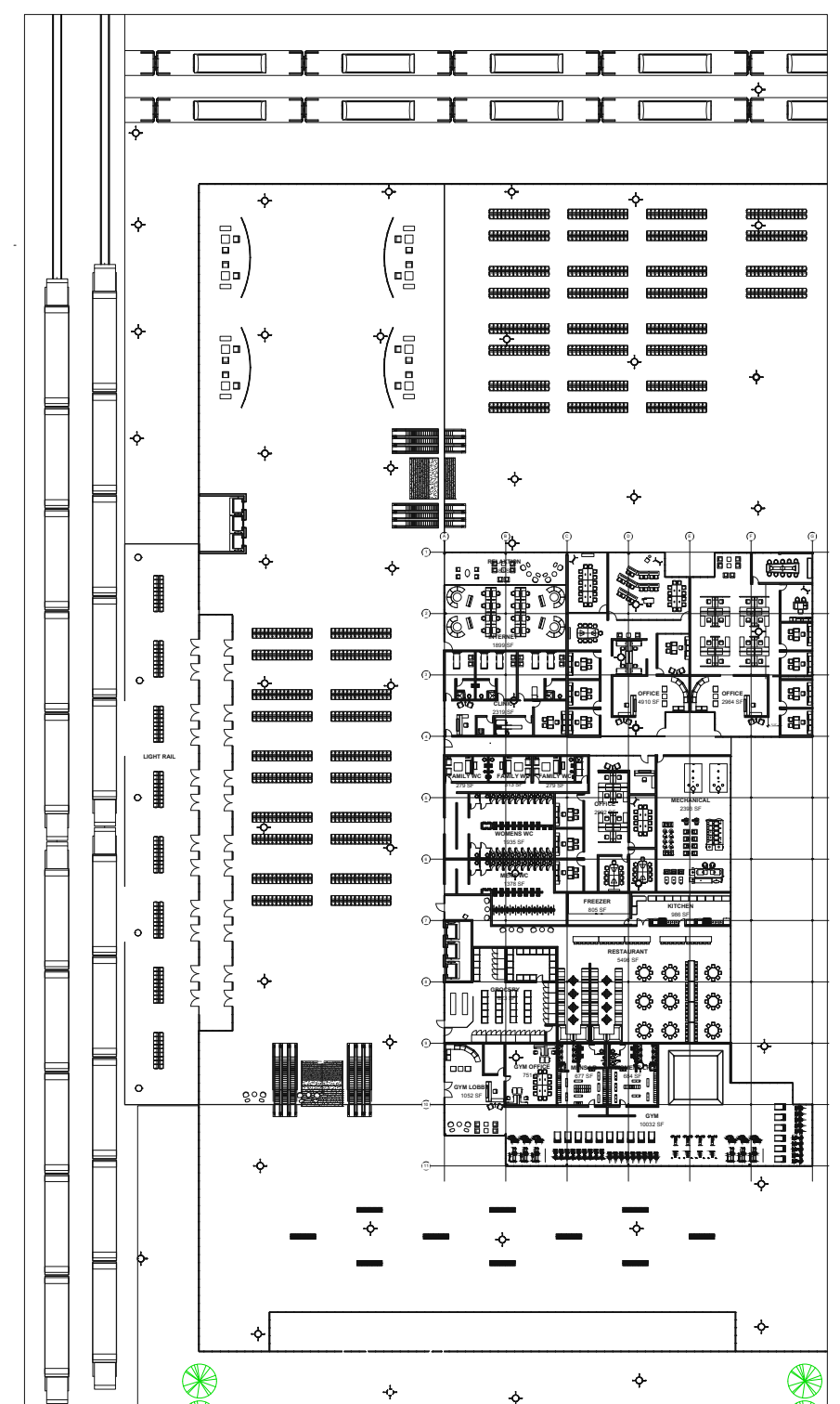
SITE PLAN: DOWNTOWN MINNEAPOLIS, COMMUTER  
TRANSPORTATION SYSTEMS SHOWN IN COLOR

- BUS/AUTO TERMINAL
- LIGHT RAIL TERMINAL
- TRAIN TERMINAL
- PEDESTRIAN TRAVEL TO SITE (WITH ARROW)
- AUTO TRAVEL TO SITE (WITH ARROW)





## GROUND LEVEL FLOOR PLAN



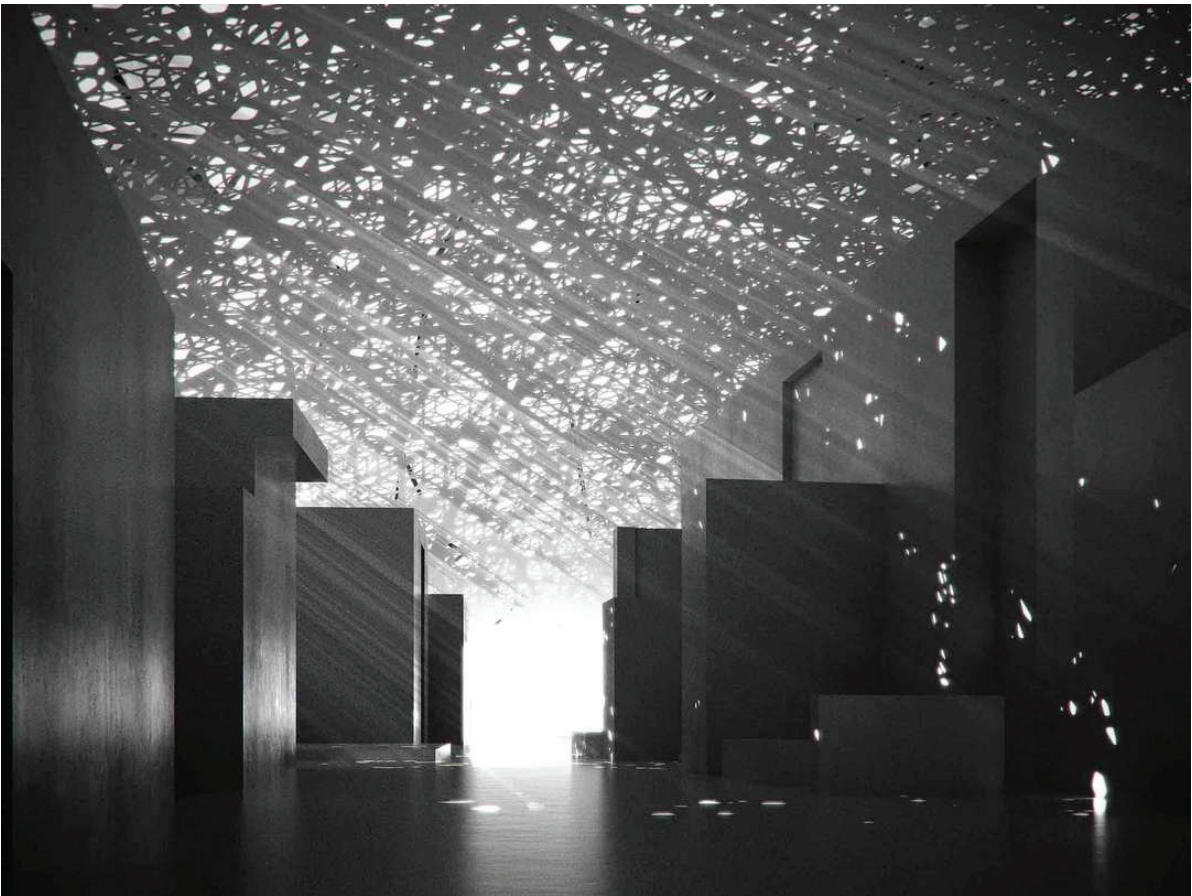
## SECOND LEVEL FLOOR PLAN







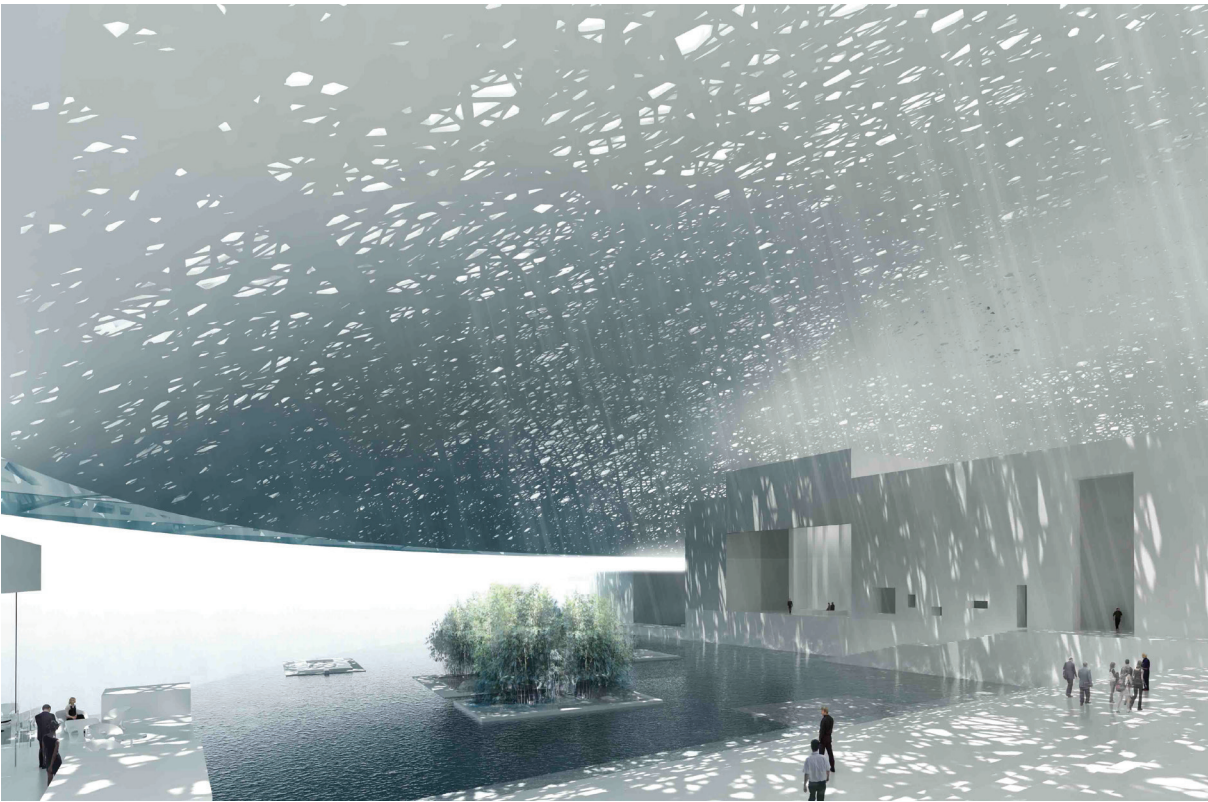
<http://www.fosterandpartners.com/media/Projects/0300/img2.jpg>



<https://acdn.architizer.com/thumbnails-PRODUCTION/64/b2/64b2859d307932f04424737192aa4346.jpg>

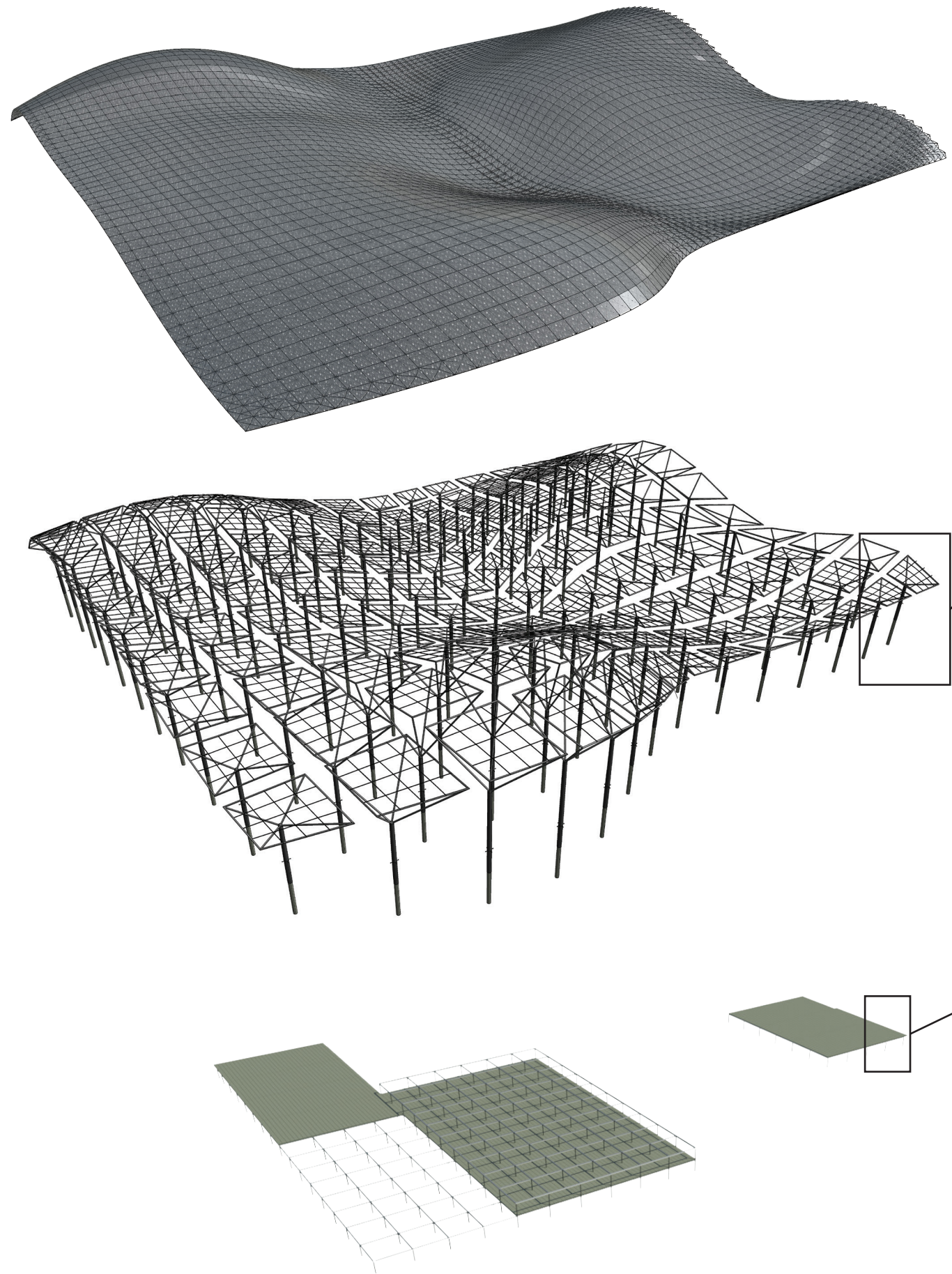


[http://upload.wikimedia.org/wikipedia/commons/3/37/Kansai\\_International\\_Airport01n4272.jpg](http://upload.wikimedia.org/wikipedia/commons/3/37/Kansai_International_Airport01n4272.jpg)

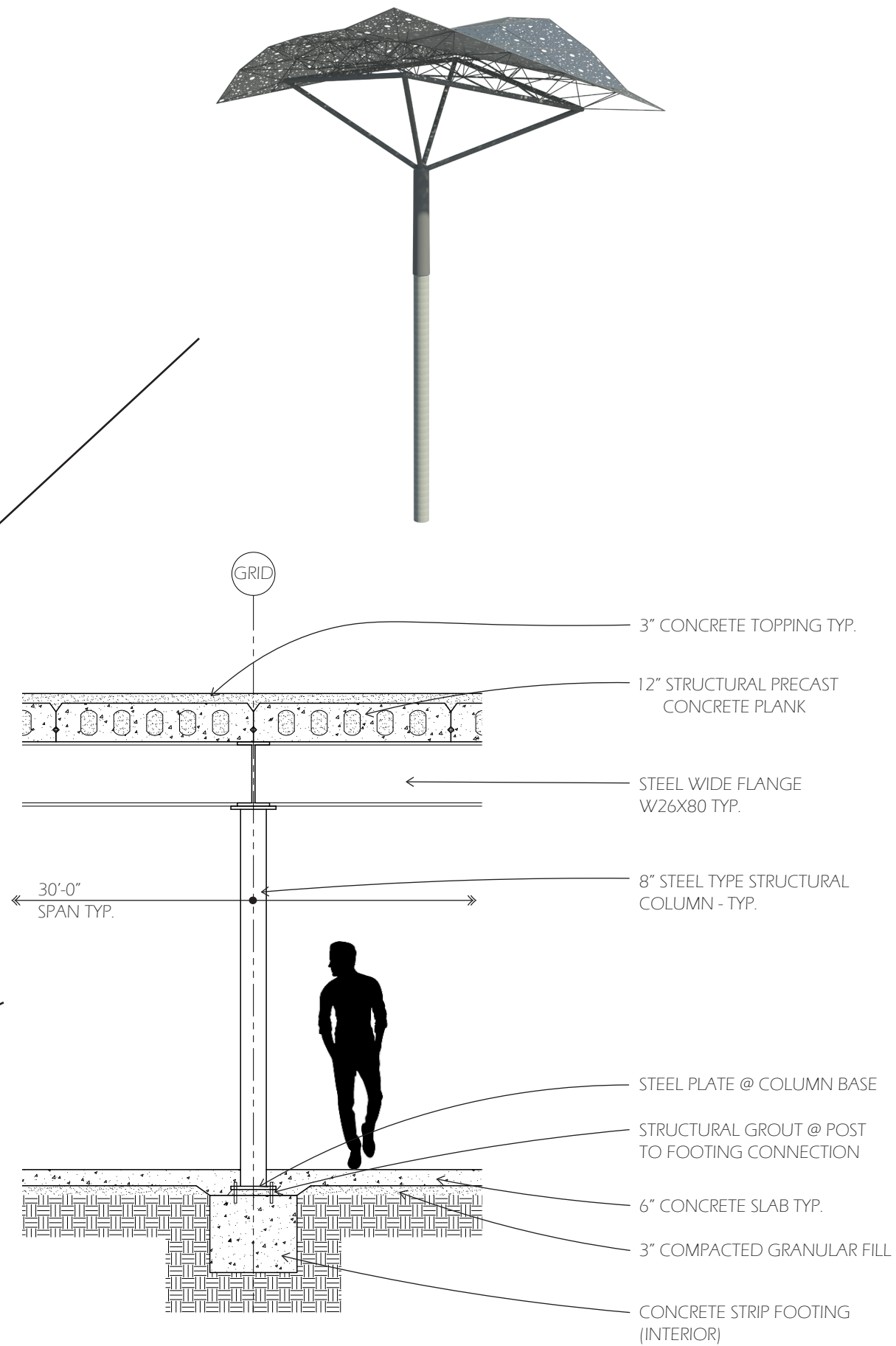


<http://ad009cdnb.archdaily.net/wp-content/uploads/2012/11/1353906634-ajn-abu-dhabi-louvre-view3.jpg>



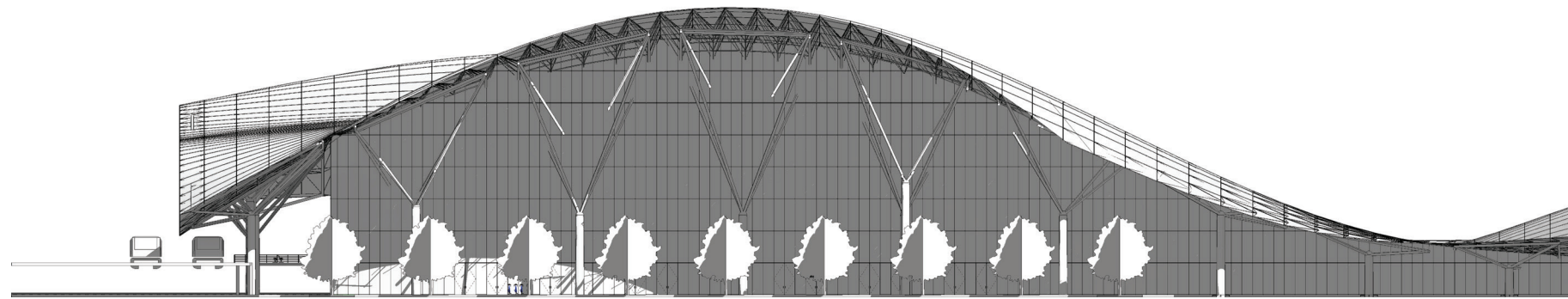


EXPLODED STRUCTURAL SYSTEM

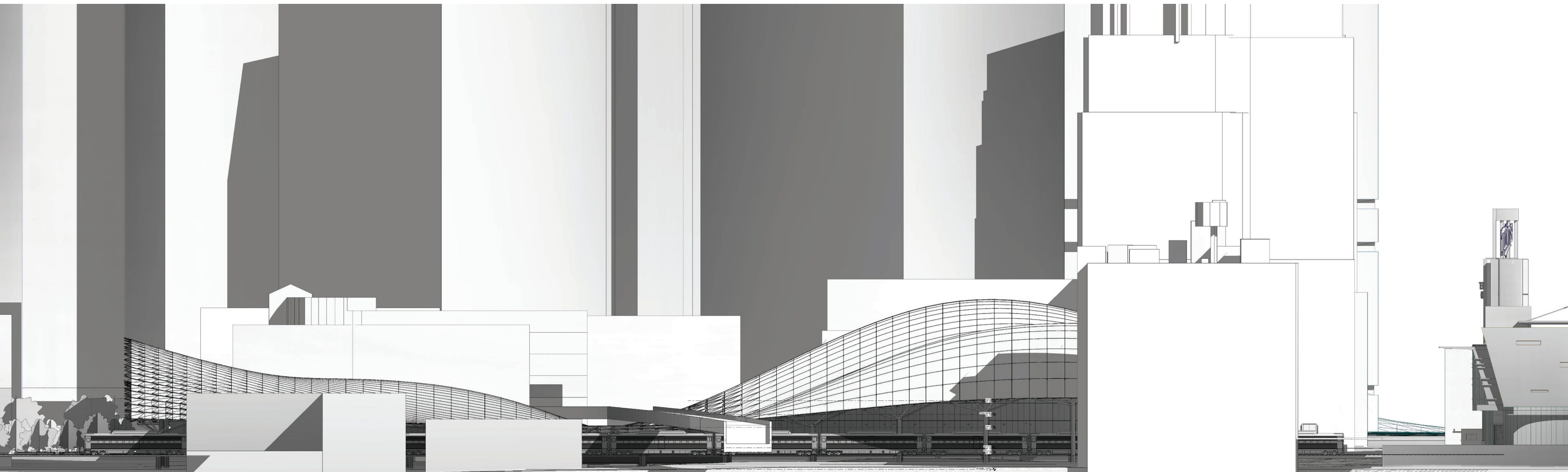
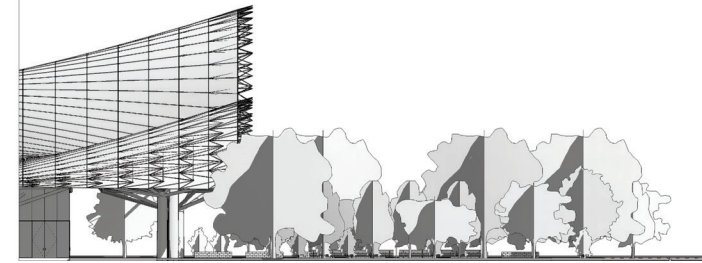


STRUCTURAL DETAILS



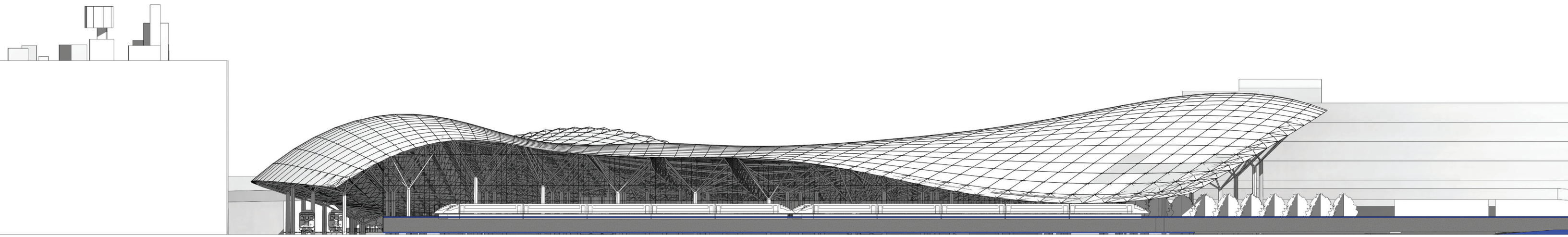


SOUTH ELEVATION

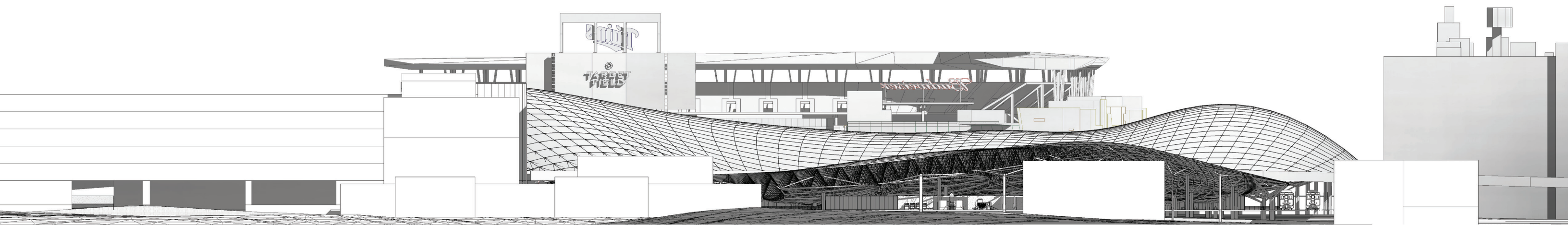


NORTH ELEVATION



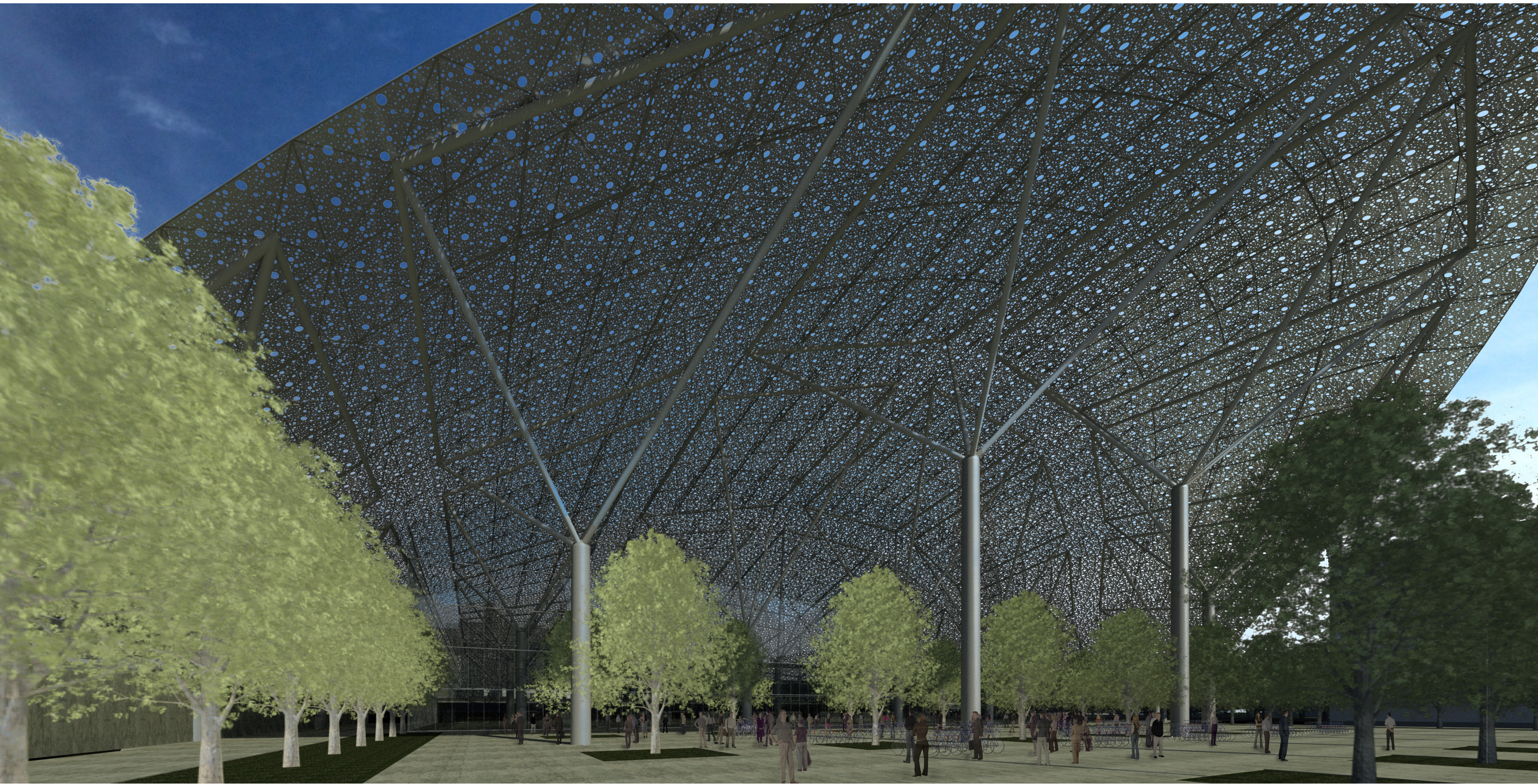


WEST ELEVATION



EAST ELEVATION





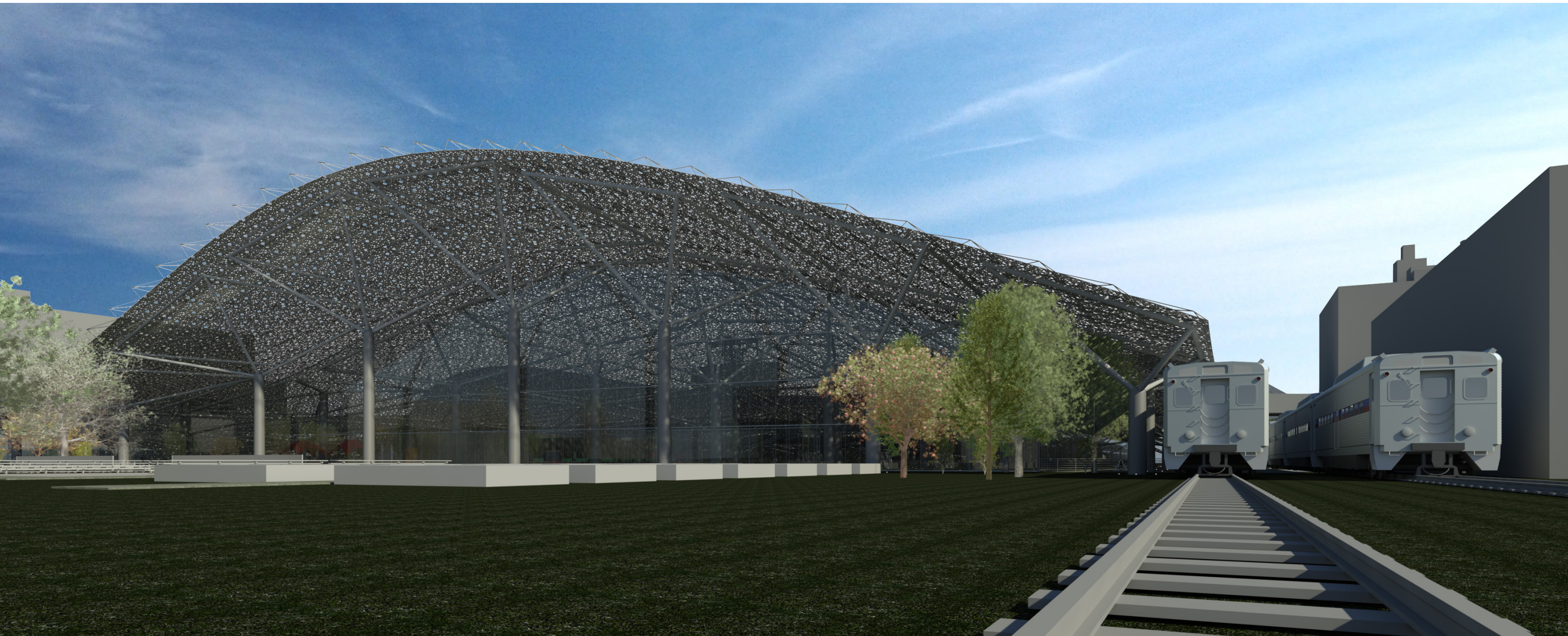
MAIN ENTRANCE





VIEW TOWARDS LIGHT RAIL





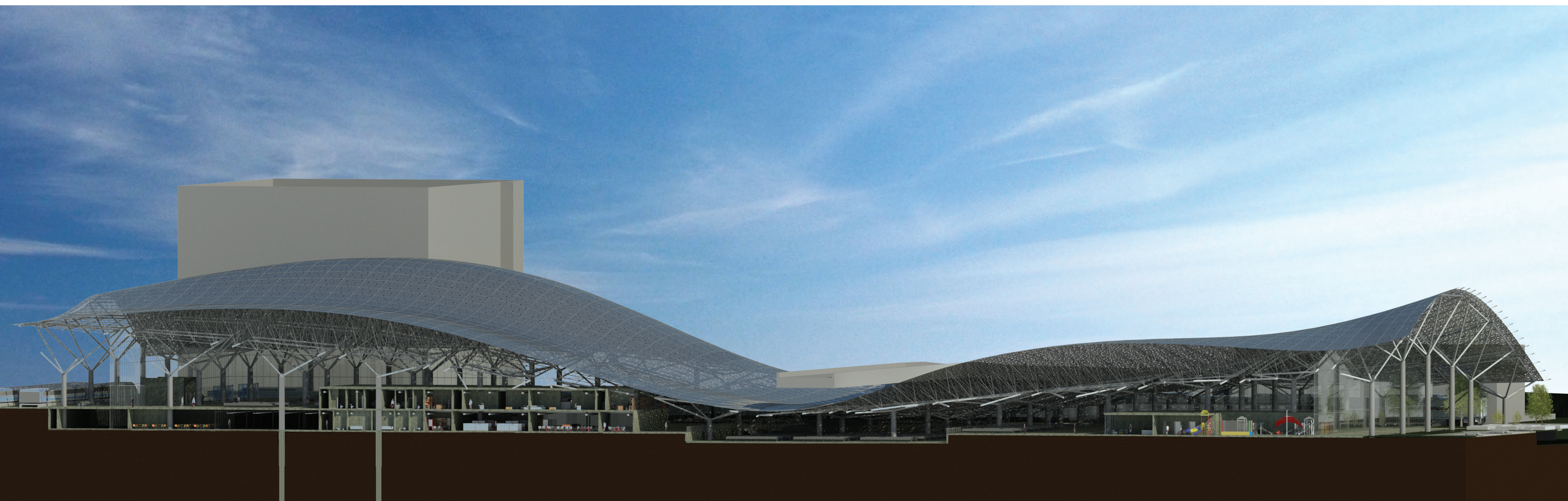
EAST VIEW FROM TRAIN APPROACH





LATITUDINAL SECTION





LONGITUDINAL SECTION



# MINNEAPOLIS TRANSPORTATION TERMINAL

---

