

uncomfortable

heavy

depressing

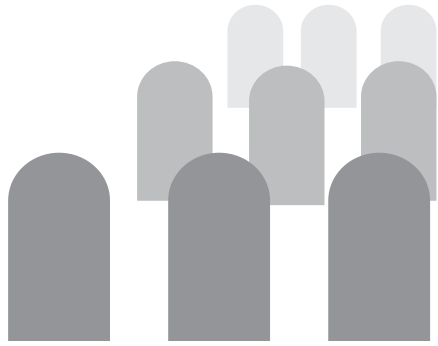
morbid



rethinking deathcare







CURRENT FUNERAL INDUSTRY

	MN	ND	USA
Burials	37.7%	61.3%	45.8%
Cremations	59.3%	36.5%	46.7%

Burials - each year

Embalming fluid	827,060 gallons
Hardwood caskets	30 million board feet
Steel vaults	14,000 tons
Reinforced concrete	1,636,000 tons

-- via Casket and Funeral Association of America, Cremation Association of America, Doric Inc.,
The Rainforest Action Network, Pre-Posthumous Society

Cremations - per body

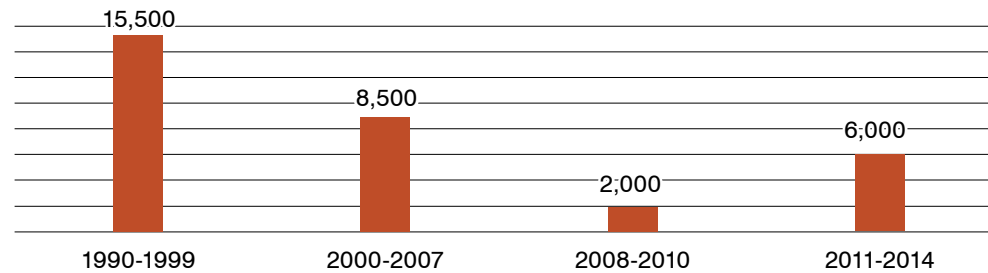
Electricity consumed	4 kWh
Natural gas consumed	2,000 ft ³
Carbon dioxide produced	250 lbs

-- via "The Green Hereafter", 2009



DIVERSITY

Migration in Minnesota -- via MN.gov



Religion in the US -- via Gallup

	Christian	Jewish	Mormon	Other	None	NA
2000	82	2	2	5	8	2
2005	79	2	2	5	10	2
2010	74	2	2	4	14	4
2014	70	2	2	6	16	4



ECONOMICS

2013 median costs

Direct cremation (no services)	\$2,260
Cremation with memorial (no viewing)	\$3,250
Casketed funeral with viewing and cremation	\$5,410
Urn	\$ 275
Cremation casket	\$ 995

Adult funeral costs by year

2000	\$5,180
2006	\$6,195
2009	\$6,560
2012	\$7,045

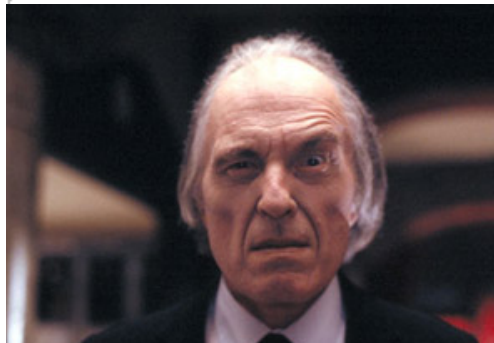
-- via National Funeral Directors Association



PERCEPTION / INDUSTRY



WAITING FOR A CUSTOMER.



THE UNDERTAKER.



PERCEPTION / FUNERARY SPACES





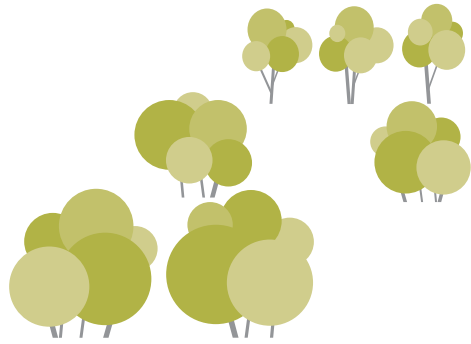
environmental disregard



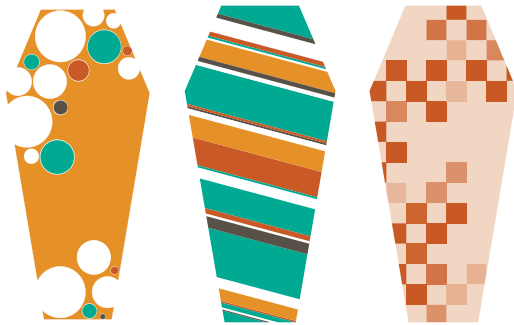
lack of identity



emotional neglect



environmental stewardship



individualization

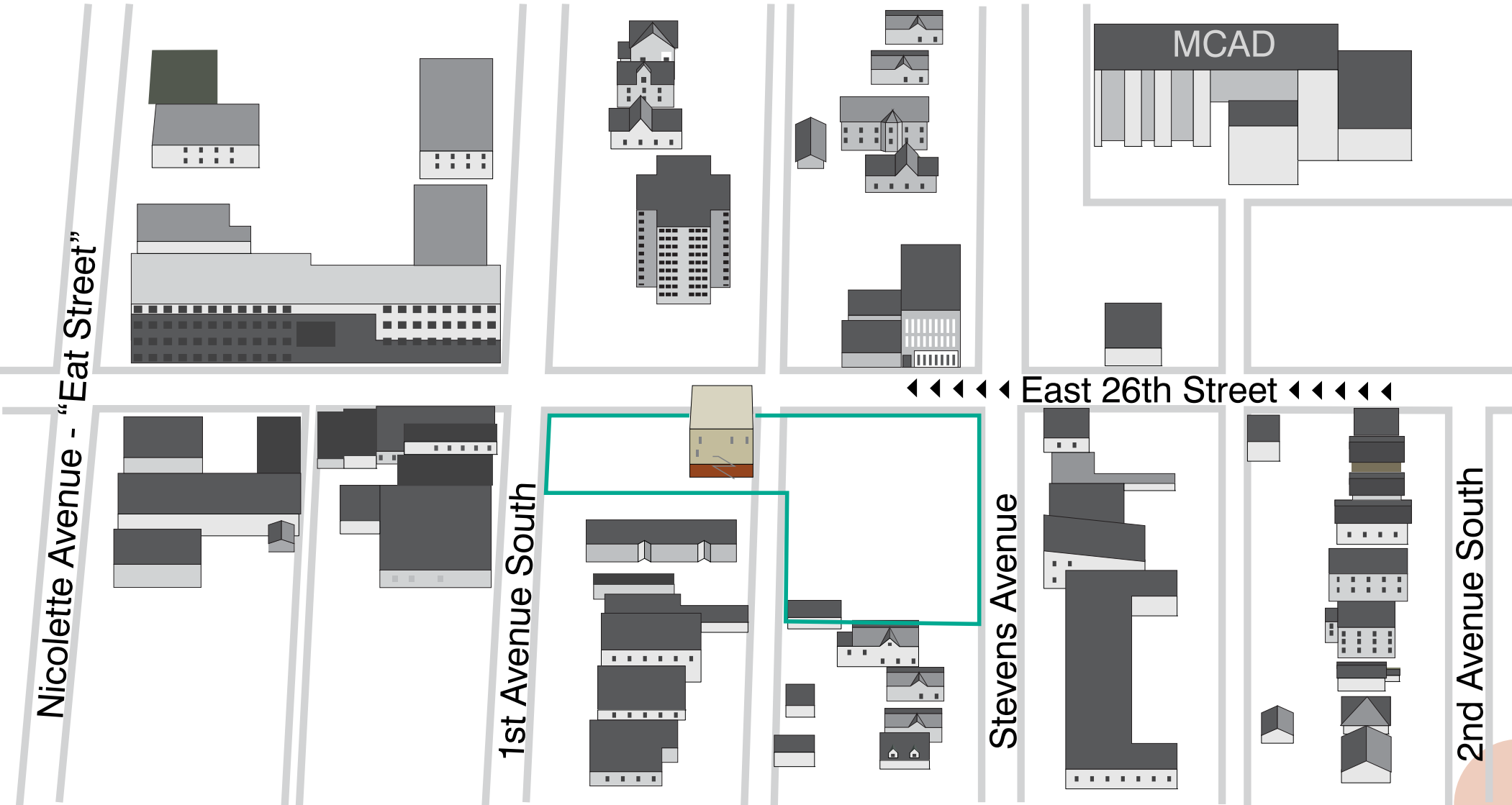


emotional responsiveness

SITE SELECTION



SITE SELECTION



Streetcars brought to neighborhood

McCullough Hall built by McEachern and Tomlinson

E. neighbor: Garage, laundromat. W. neighbor: 8 shops

8 apartments owned by clerks, painter(s), salesmen

Deemed ineligible for NRHP. Storefront replaced with CMU.

Third floor apartment fire

Demo, spot tucking, window replacement permit filed

1880

1887

1912

1930

1990

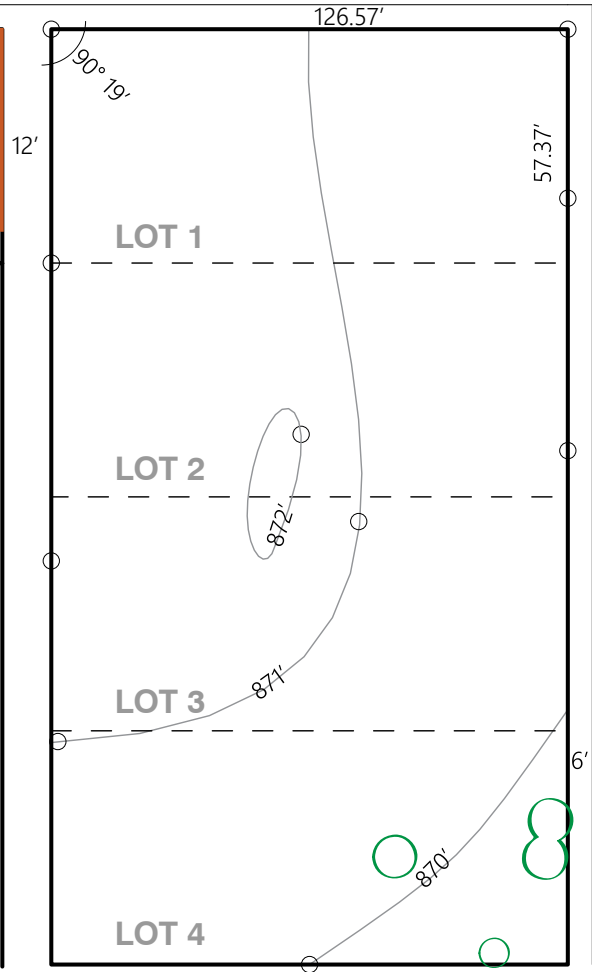
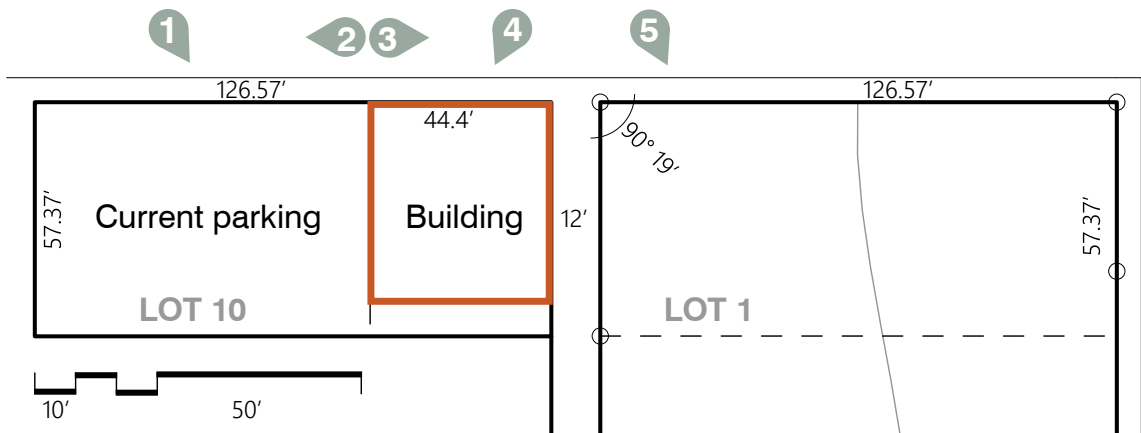
2001

2011



Joe's CHICKEN shack
TAKE OUT FOOD





6

4

5

7

6

7

PROGRAM

Assembly

Small

Medium

Large

Fellowship

Rooftop

Conservatory

Administration

Workspaces

Offices (3)

Copier/storage

Break room

Event support

Food prep

Storage (2)

Restrooms

Parking

Deathcare

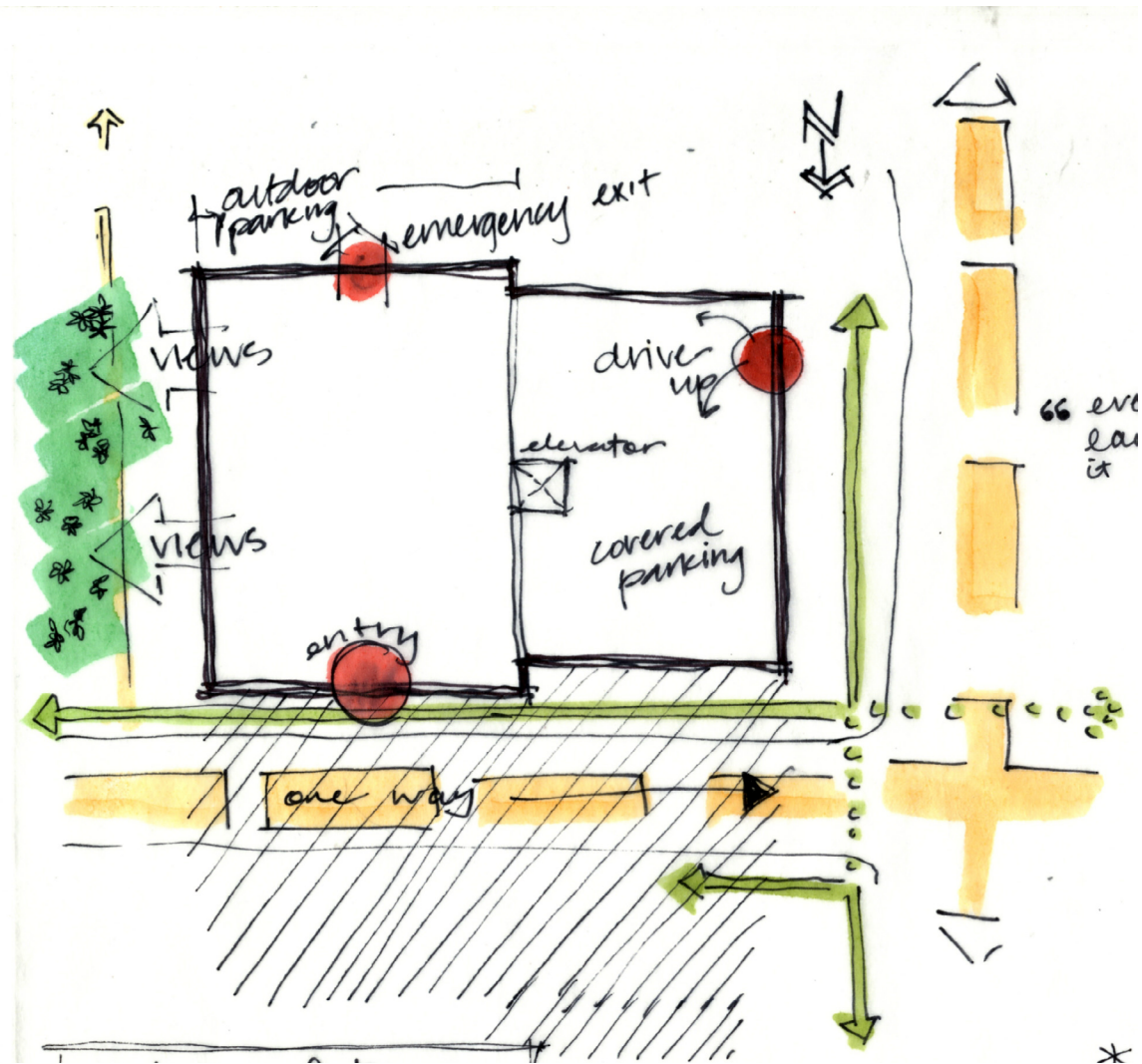
Cremation

Refrigerated storage

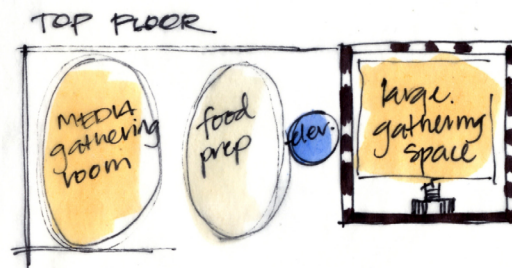
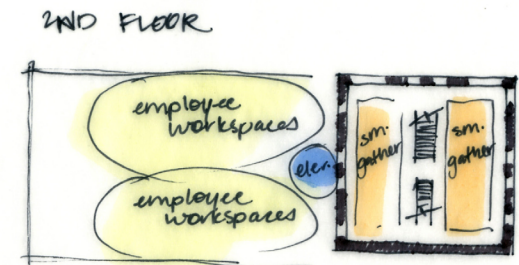
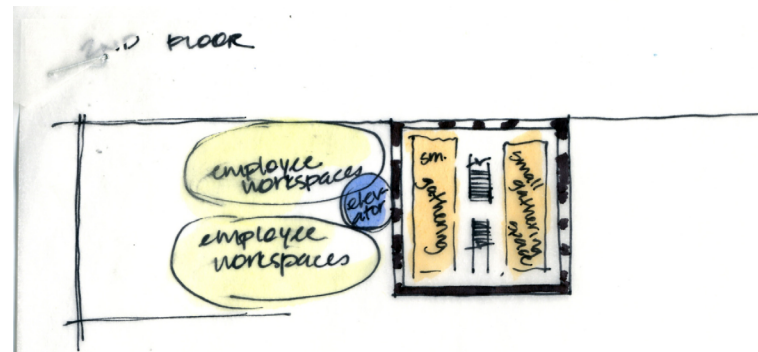
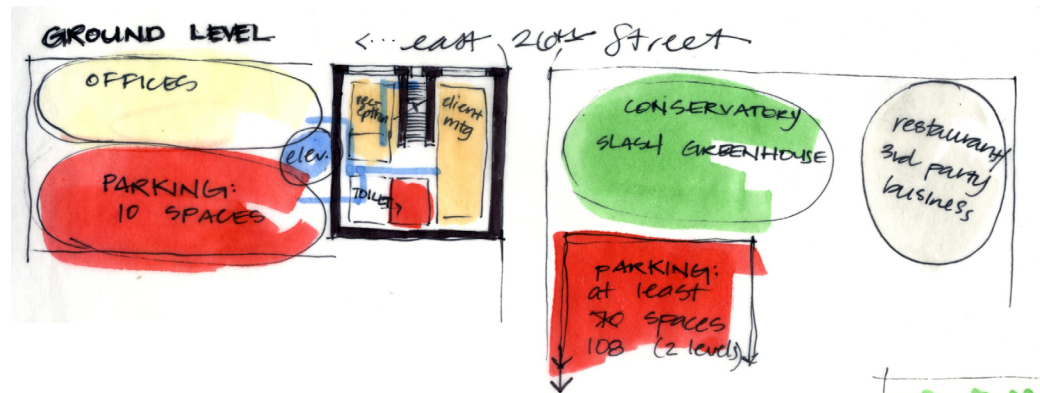
Composting

Storage

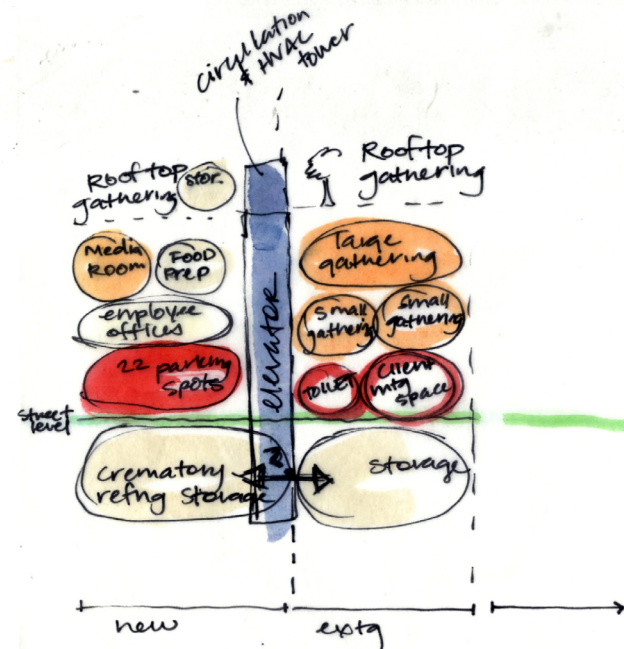
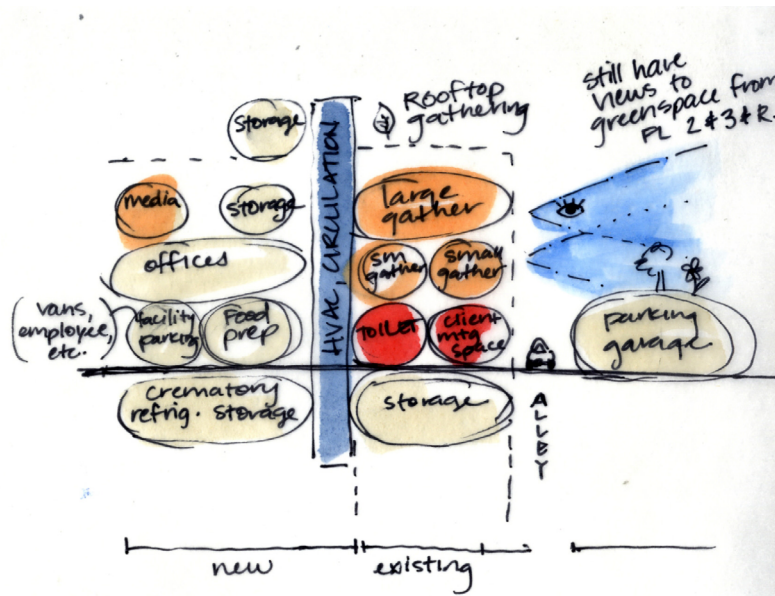
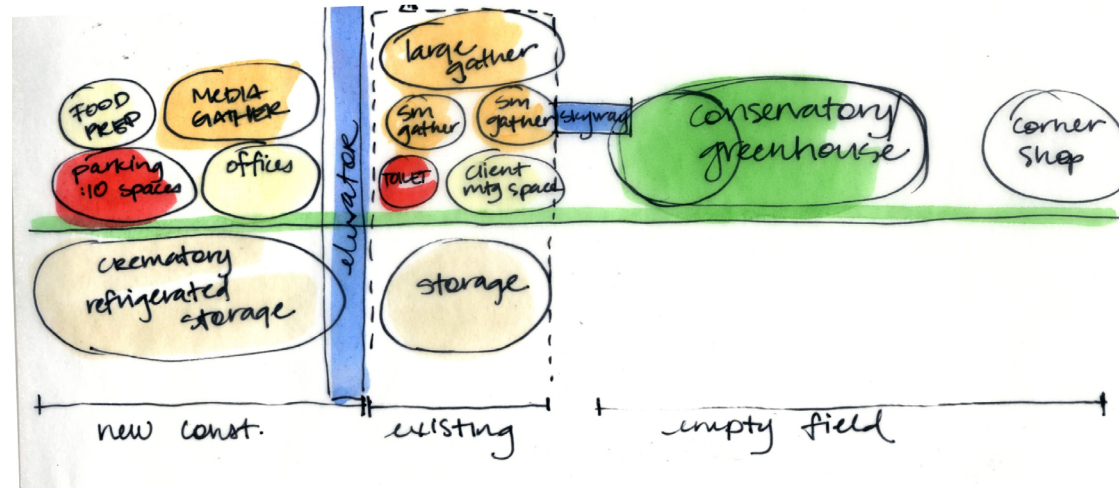
PRELIMINARY SPACE PLANNING



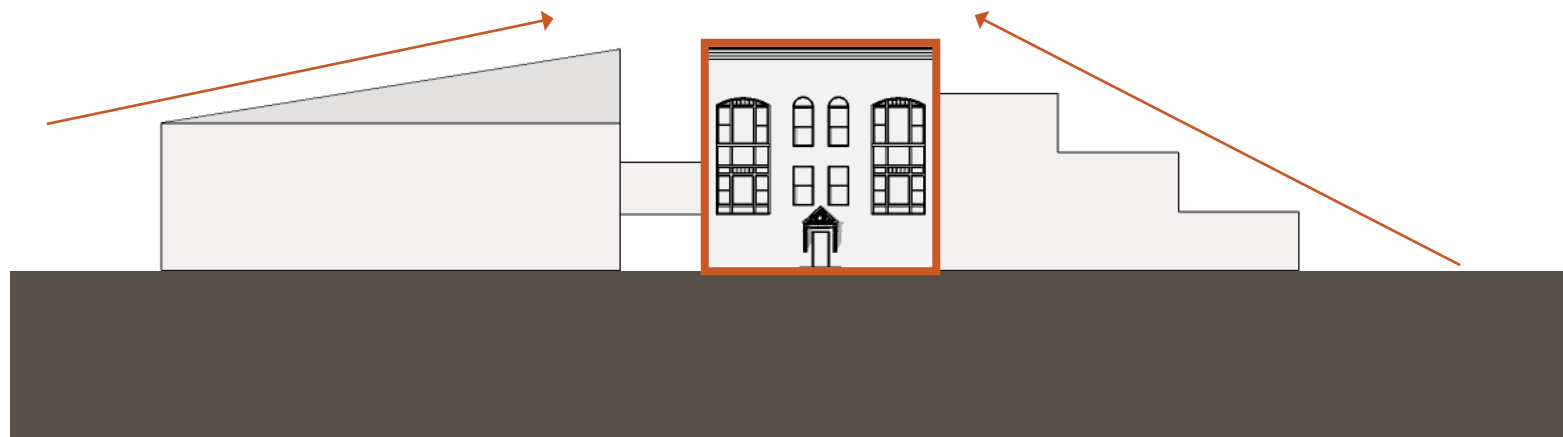
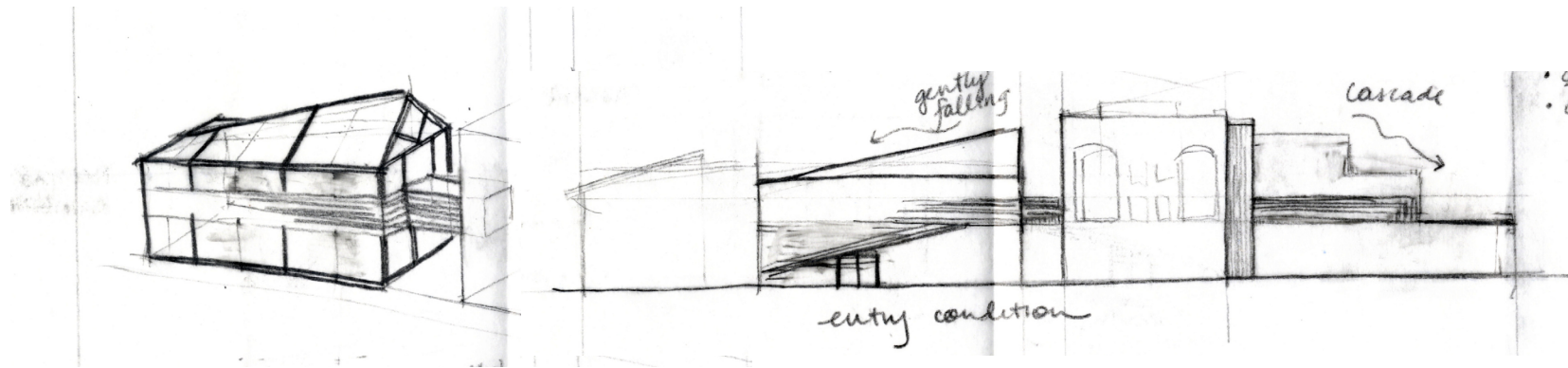
PRELIMINARY SPACE PLANNING



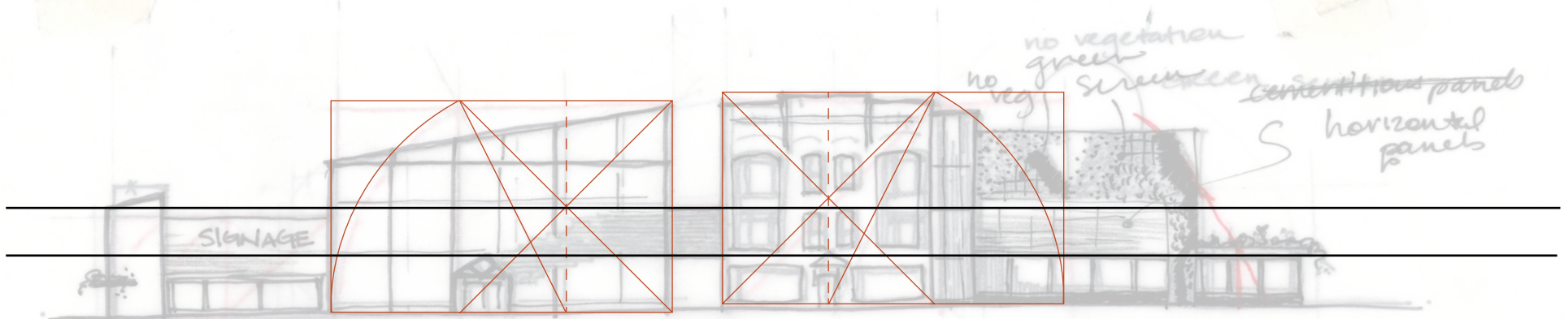
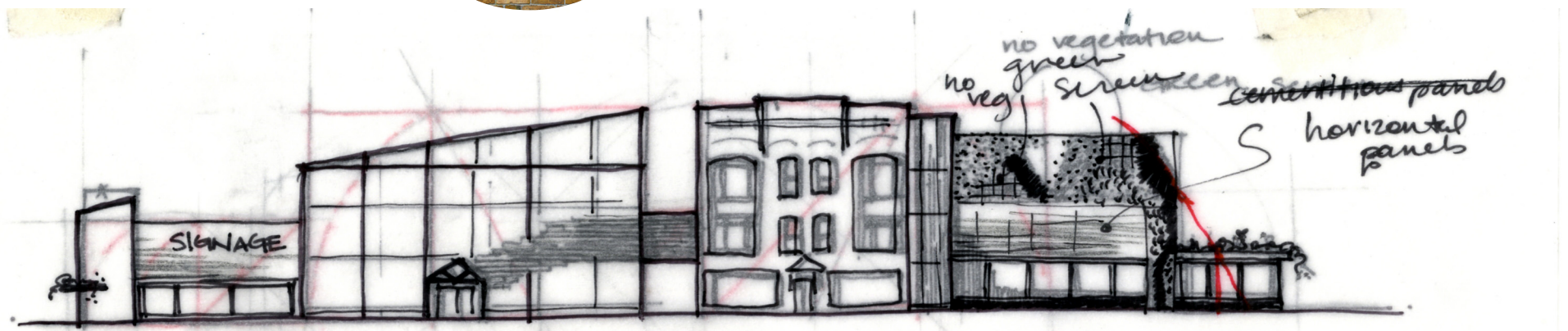
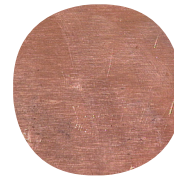
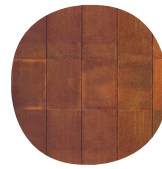
PRELIMINARY SPACE PLANNING



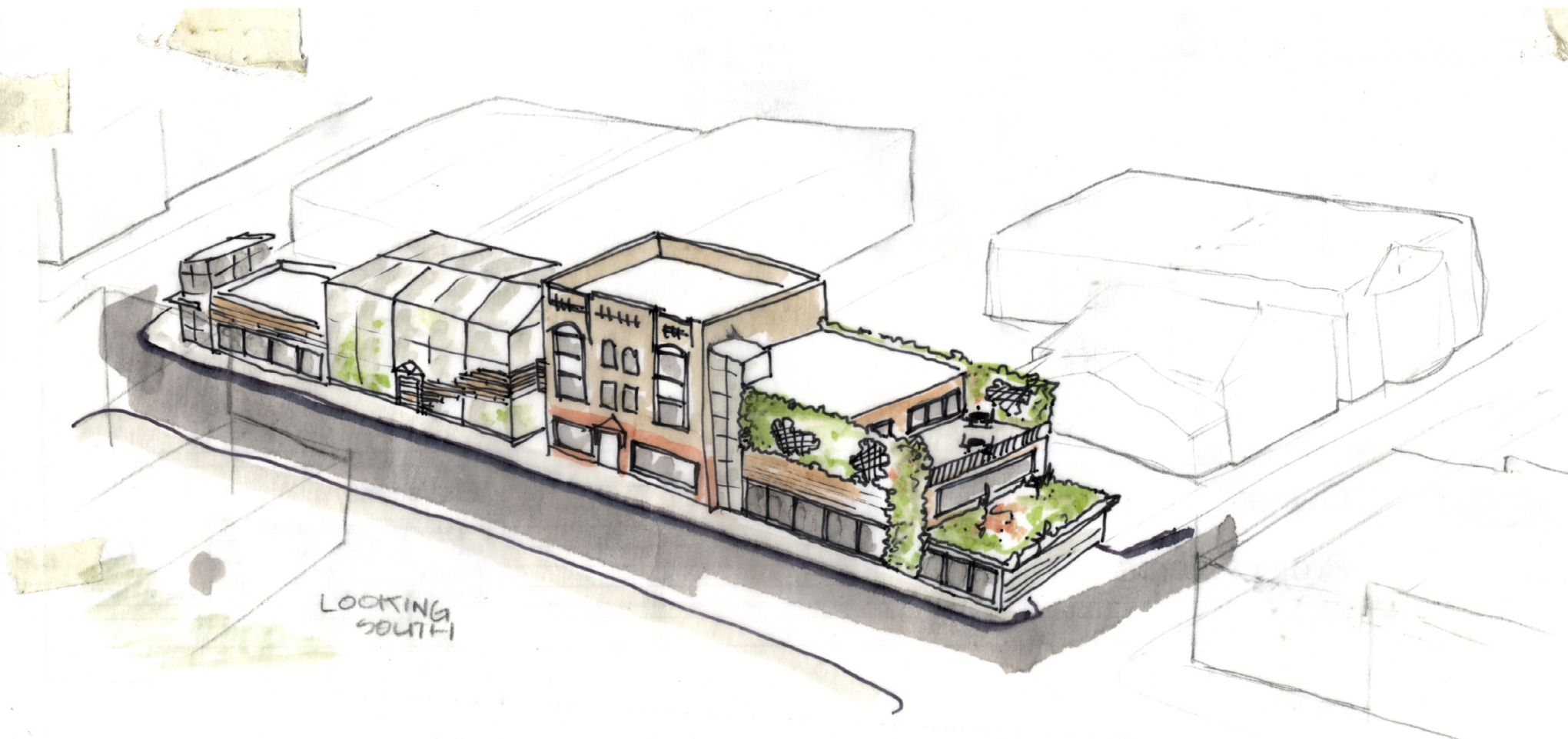
MASSING STUDIES



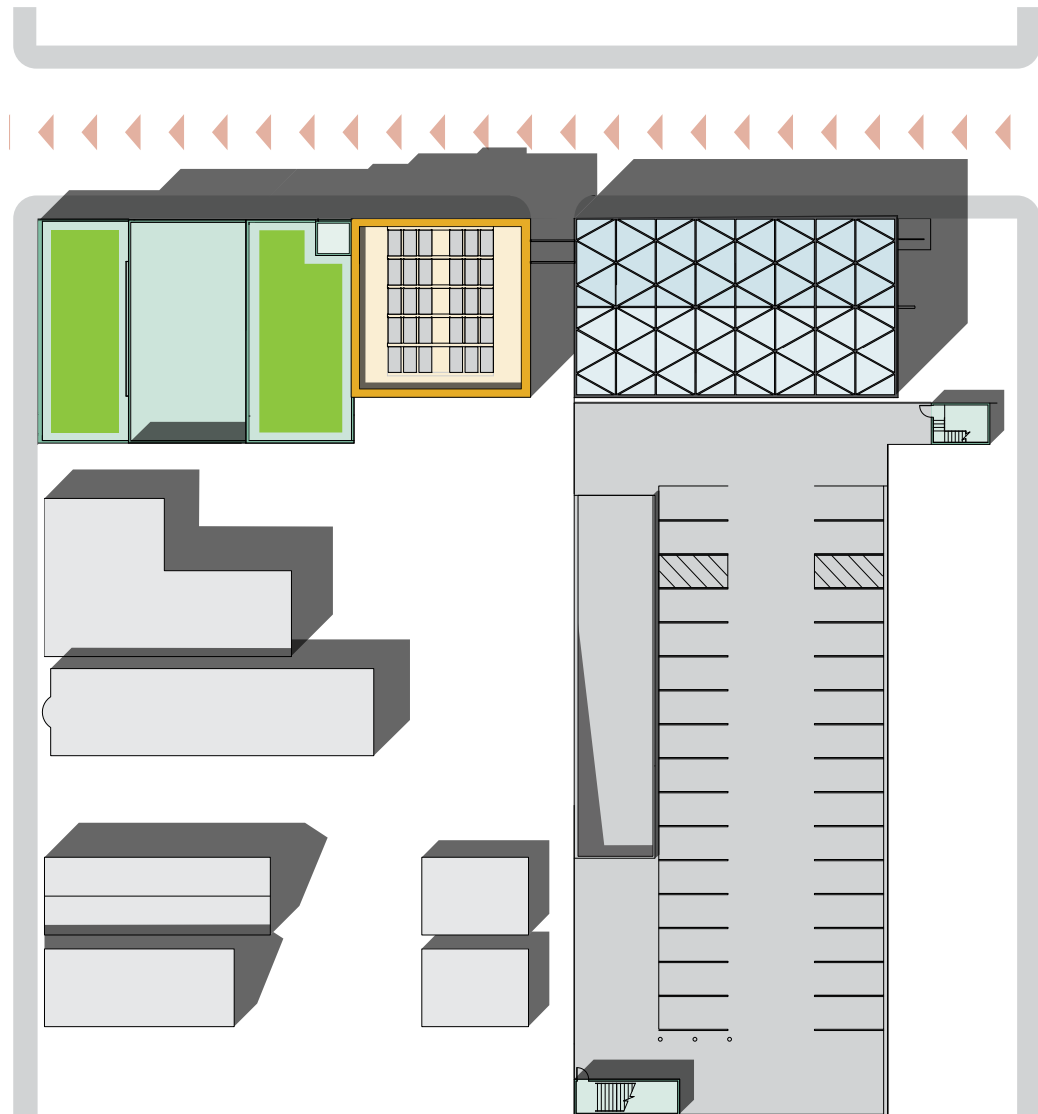
ELEVATION / MATERIAL STUDIES



ELEVATION / MATERIAL STUDIES

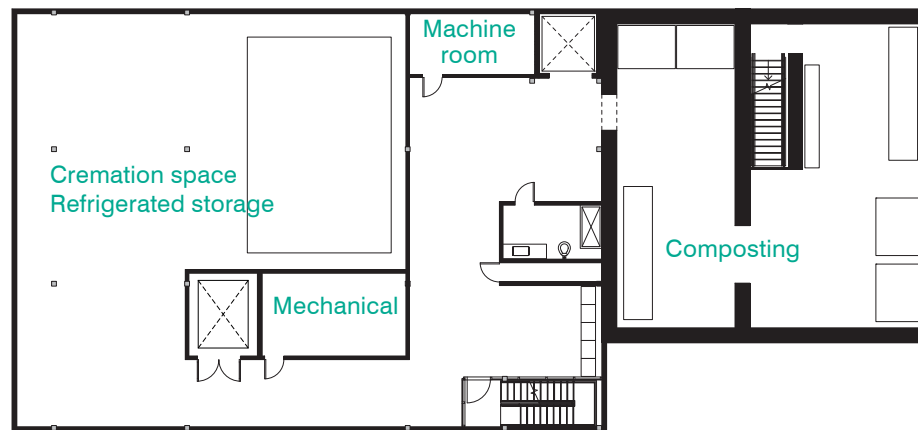


SITE PLAN

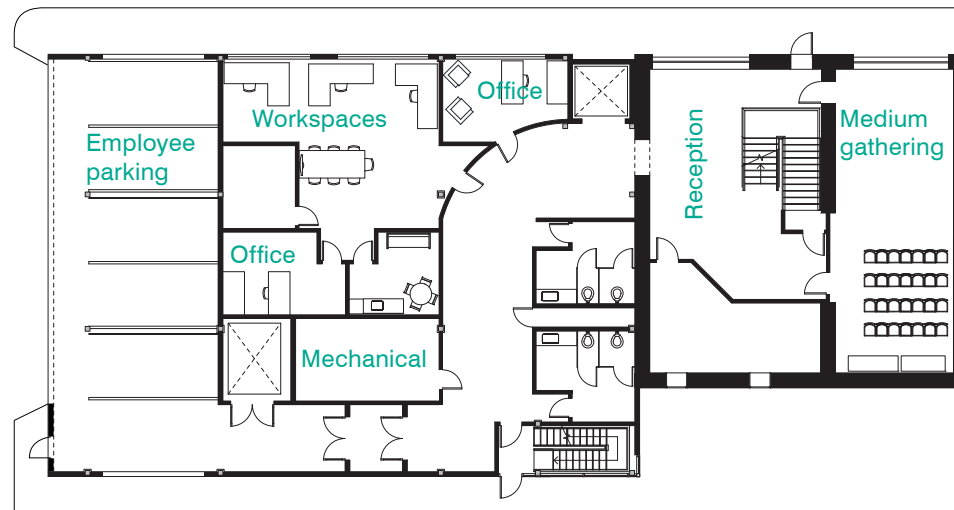


- C2 (commercial) zoning district
- Pedestrian Overlay
- 48 spaces minimum, 86 maximum
- 30 parking spaces above, 4 ADA
- 50 below grade

FLOOR PLANS · Lower level and floor one

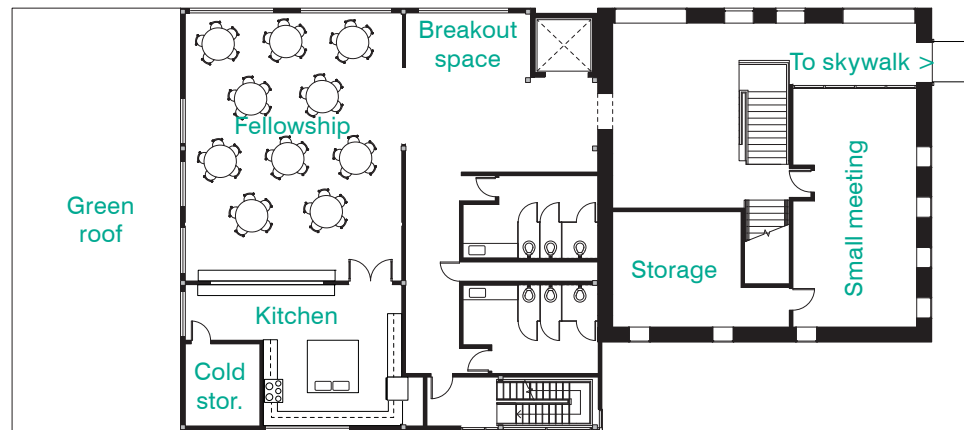


- Secure access
- Alkaline hydrolysis BioCremation machine
- Four composting containers

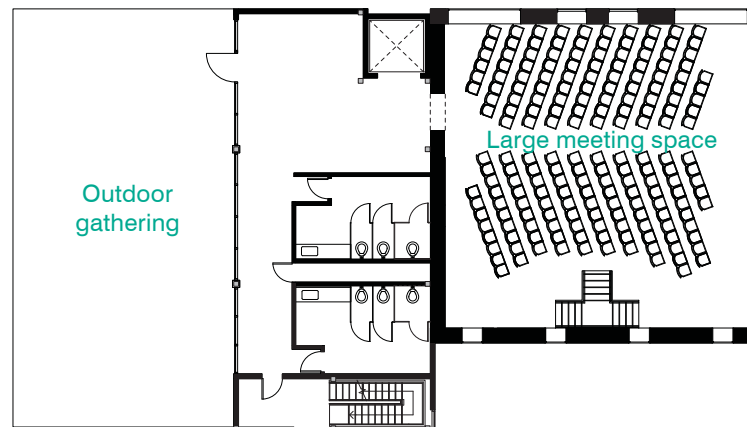


- Sidewalk entry
- Transparent/welcoming administrative spaces
- Service elevator and public elevator

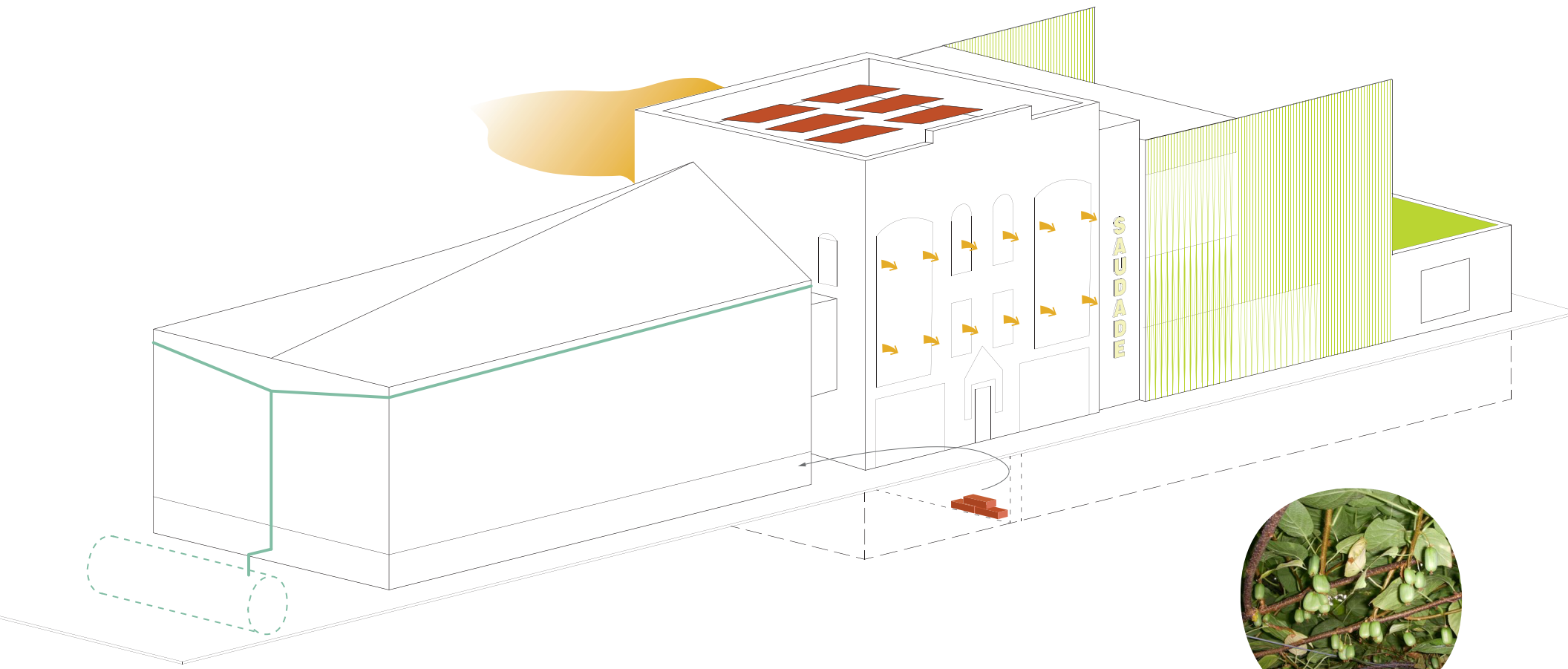
FLOOR PLANS · Floor two and floor three (top)



- Overflow/spillway spaces
- 50 seats shown for sharing a meal/potluck



- 189 seats shown for major assembly space



WATER COLLECTION

6,500 gallons in the summer months

PASSIVE COOLING

Double hung windows + Chicago-style windows can capture incoming summer breezes.

VEGETATION

Steel frame and steel cable trellises on north, west, and south facades

Green roof with prairie grass xeriscape

BRICK REUSE

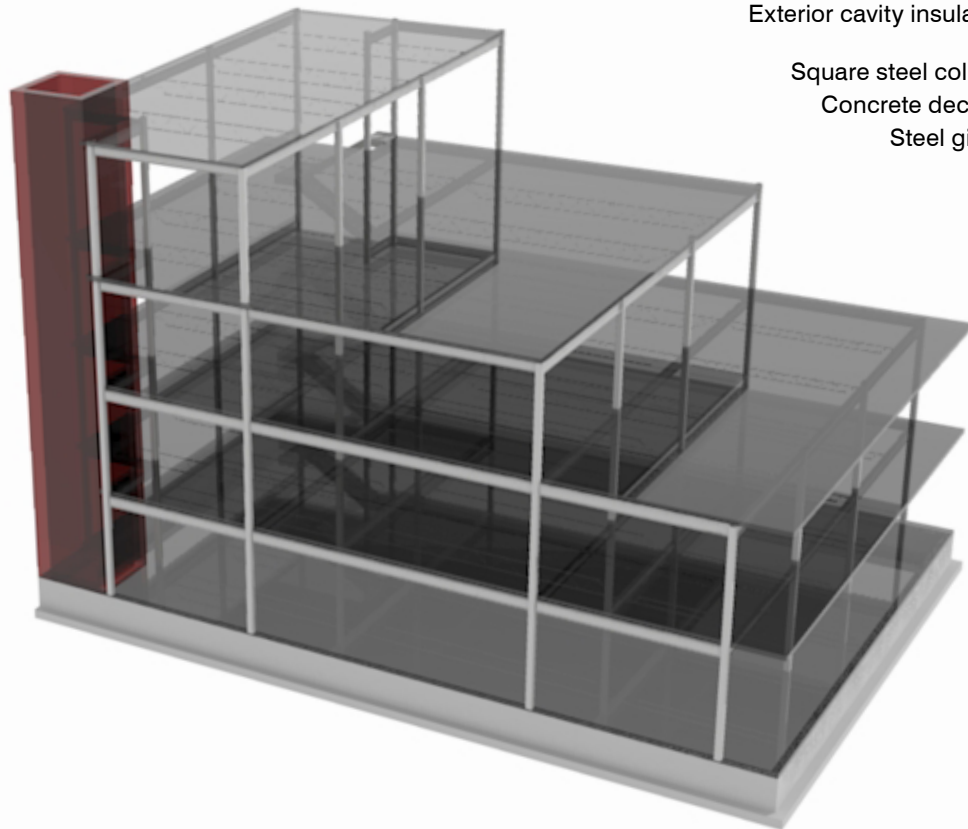
Displaced interior bricks provide 413 ft² of rainscreen for conservatory

PHOTOVOLTAICS

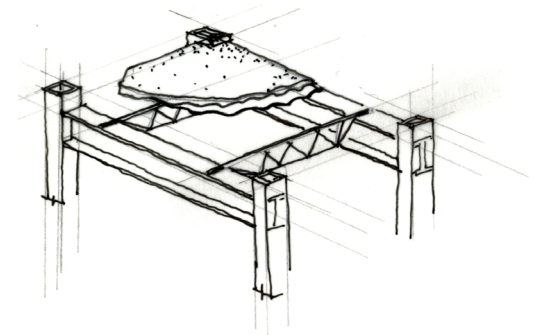
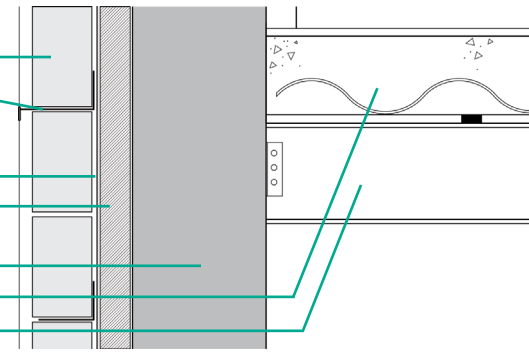
5% tilt, 20% efficiency
36 panels
15 kWh/day array output



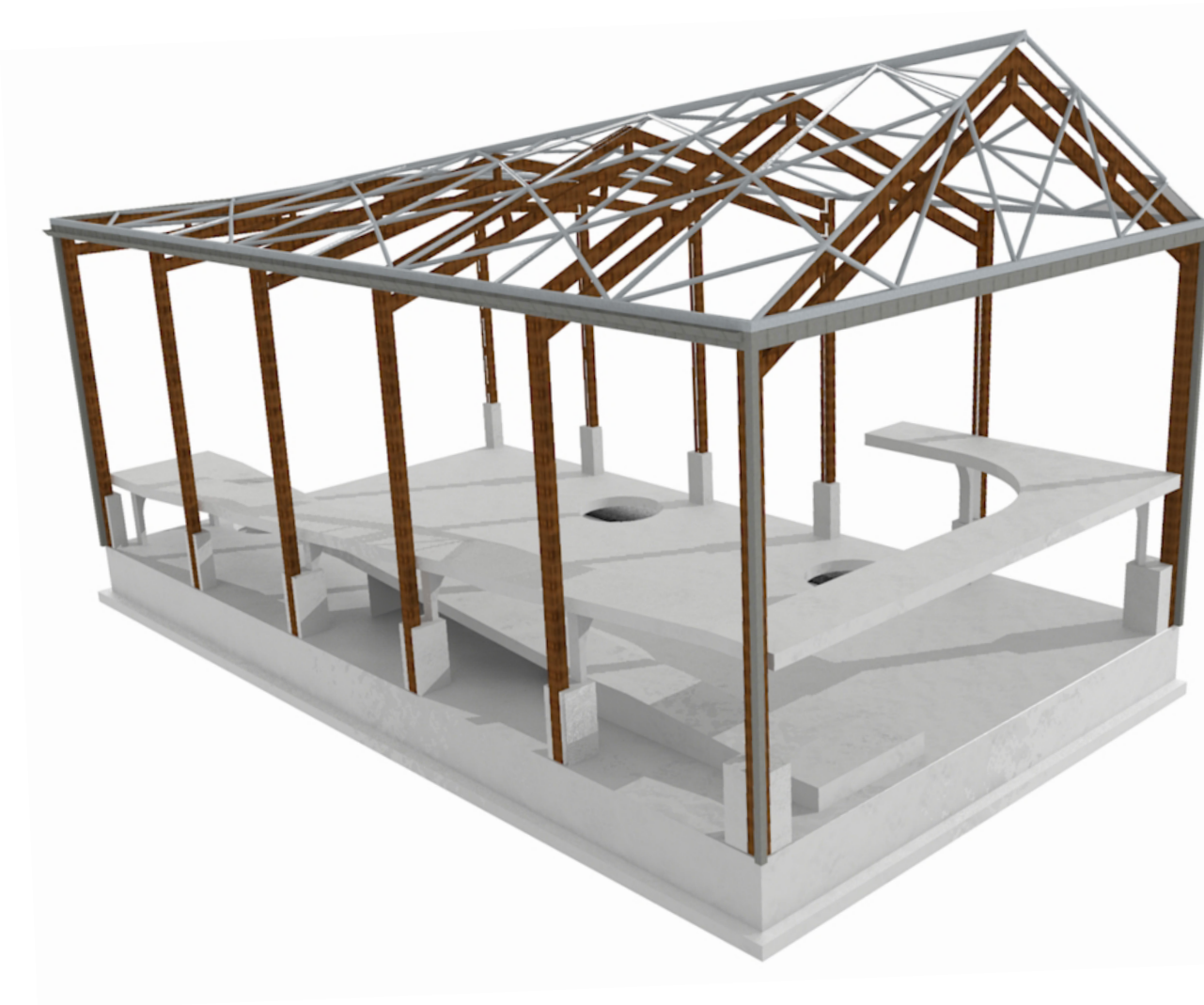
STRUCTURAL SYSTEM



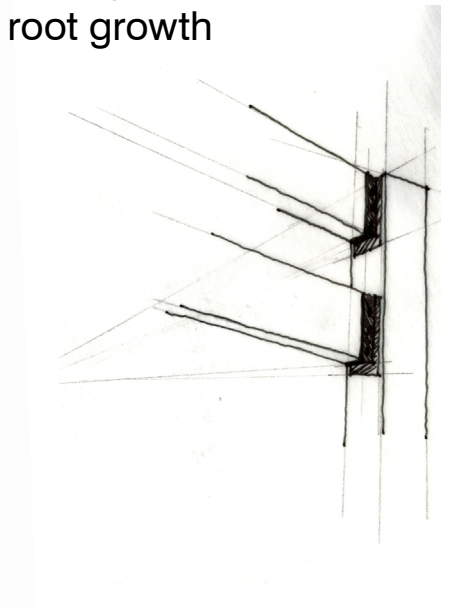
- Stone cladding
- Trellis anchor/stone anchor
- Vapor barrier
- Exterior cavity insulation
- Square steel column
- Concrete decking
- Steel girder



CONSERVATORY PLAN

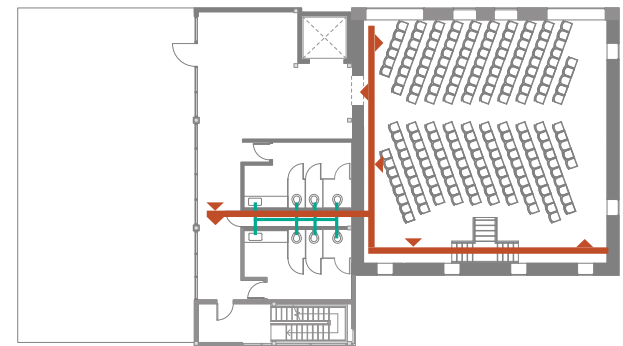
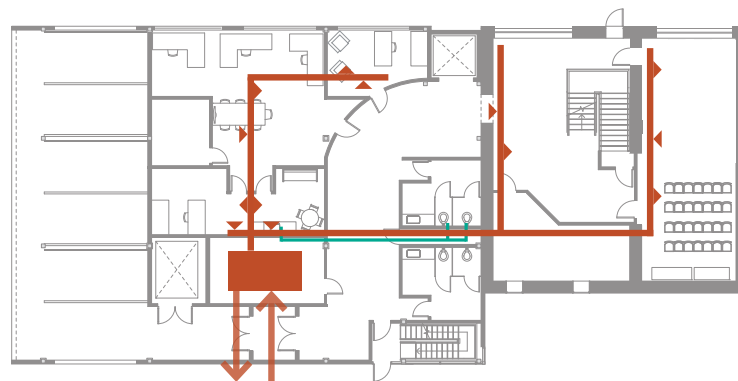
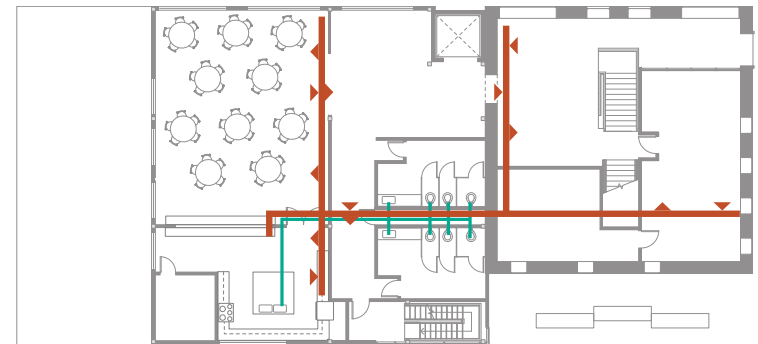
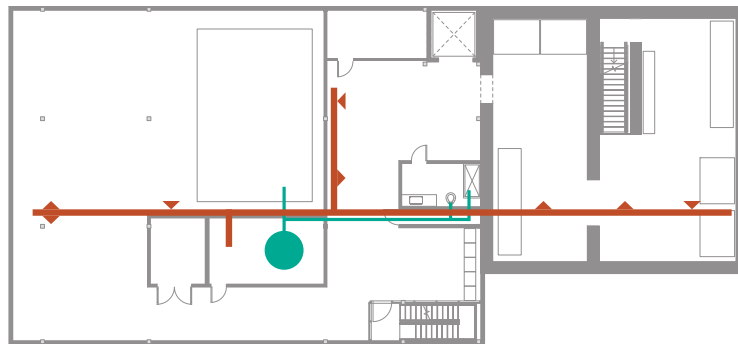


- 12" x 12" glue-lam heavy timber columns
- 12" x 6" glue-lam trusses
- Steel storefront glazing
- Diagrid glass roof
 - Low-E glazing / south
- Concrete slab
- Floor punctured for tree root growth



ACTIVE SYSTEMS

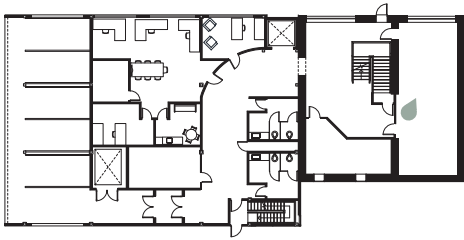
Plumbing · VAV heating/cooling



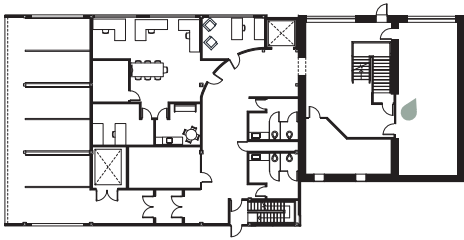
DESIGN SOLUTION



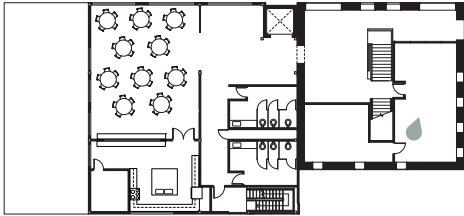
GALLERY-STYLE SERVICE



PRE-PLANNING WORKSHOP



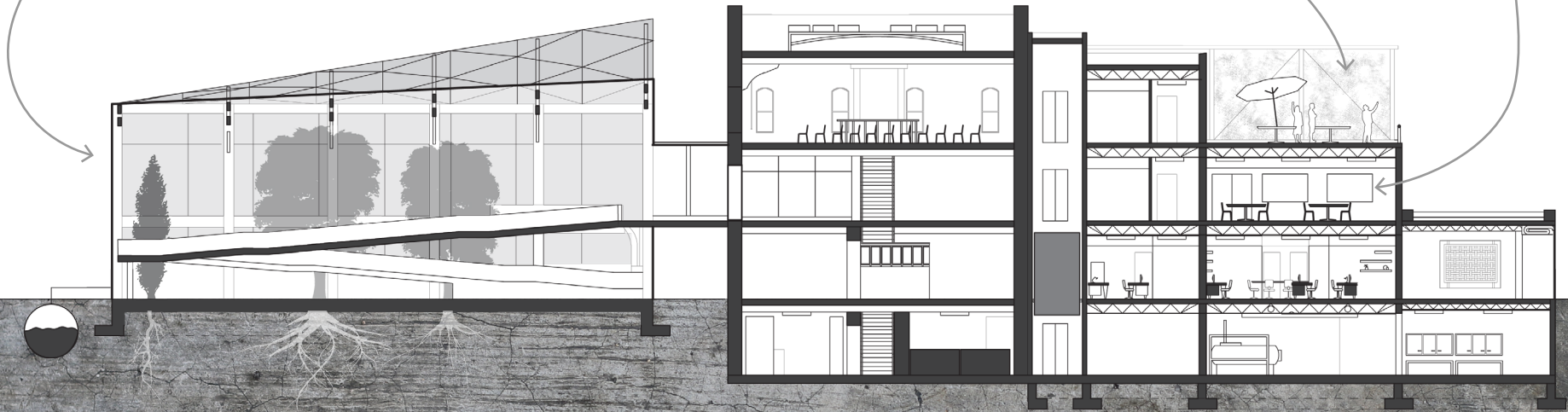
CASUAL SERVICE



CONSERVATORY



NON-TRADITIONAL CELEBRATIONS



NAVIGATIONAL SLIDE

Plans

- Neighborhood
- Site
- Lower level, Fl 1
- Floor 2, floor 3

Views

- Site photos
- Overall exterior
- Gallery service
- Workshop
- Casual service
- Conservatory
- Section -other svcs

Technical

- Exterior technology
- New structure
- Conserv. structure
- HVAC/plumbing

- Project justification
- Ideation
- Design solution