
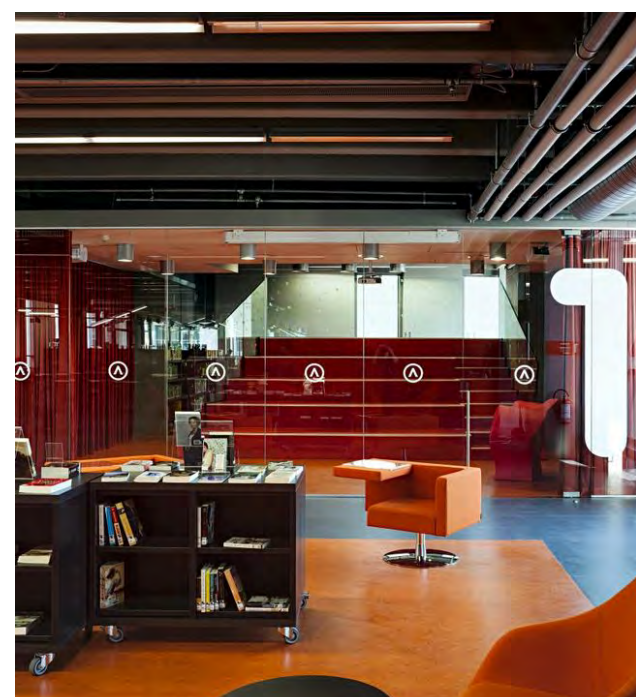


# CASE STUDIES

**Project Type**  
Knowledge Center

**Location**  
Roosdare, Belgium

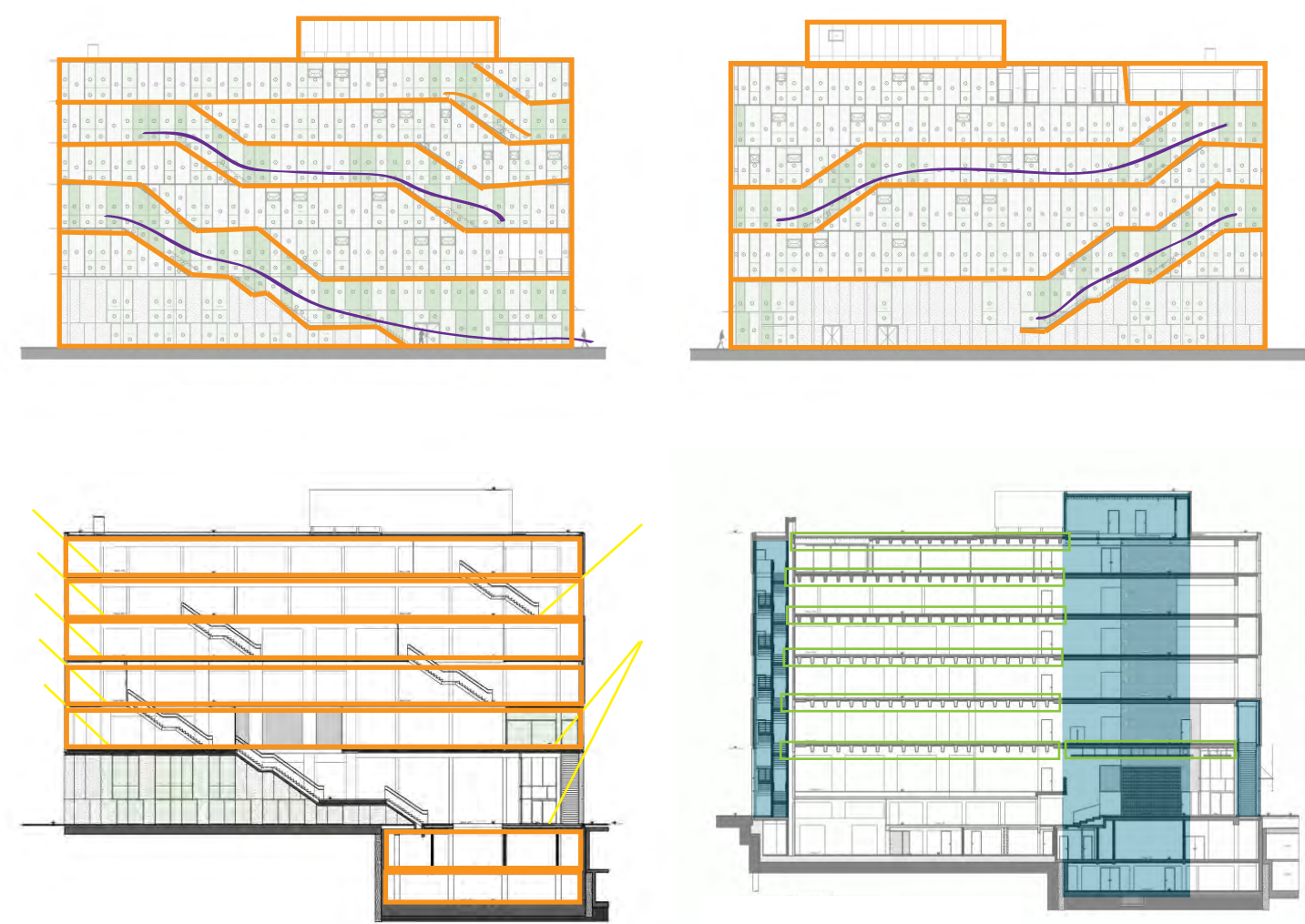
**Design Team**  
BURO I & ARCH+I

**Size**  
7,460 sqm

**Year**  
2014

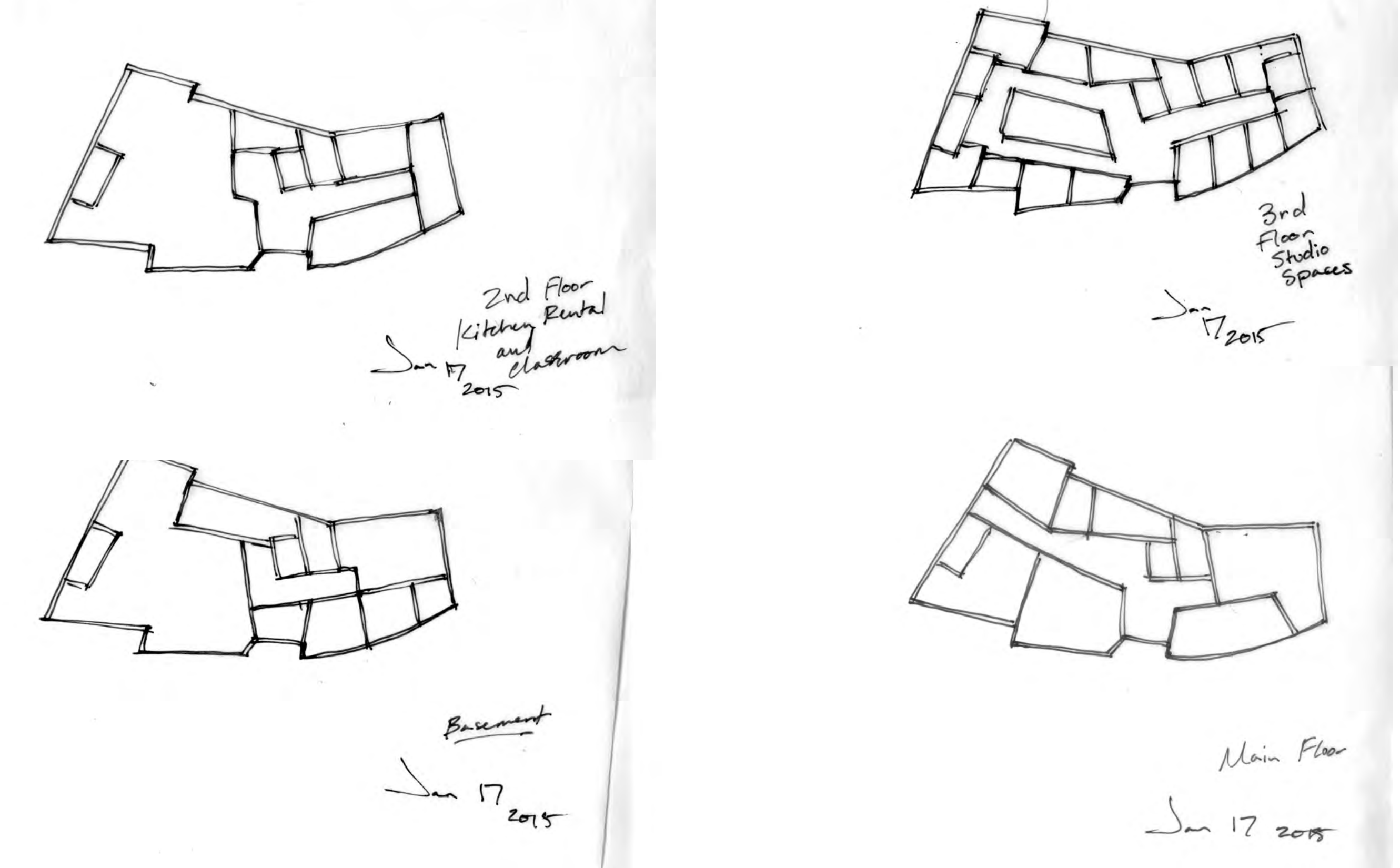
**Project Elements**  
Offices  
Knowledge Library  
Shops  
Exhibition Spaces

**Characteristics**  
Both Private and Public  
Functions  
Multifunctional Facility  
Open House



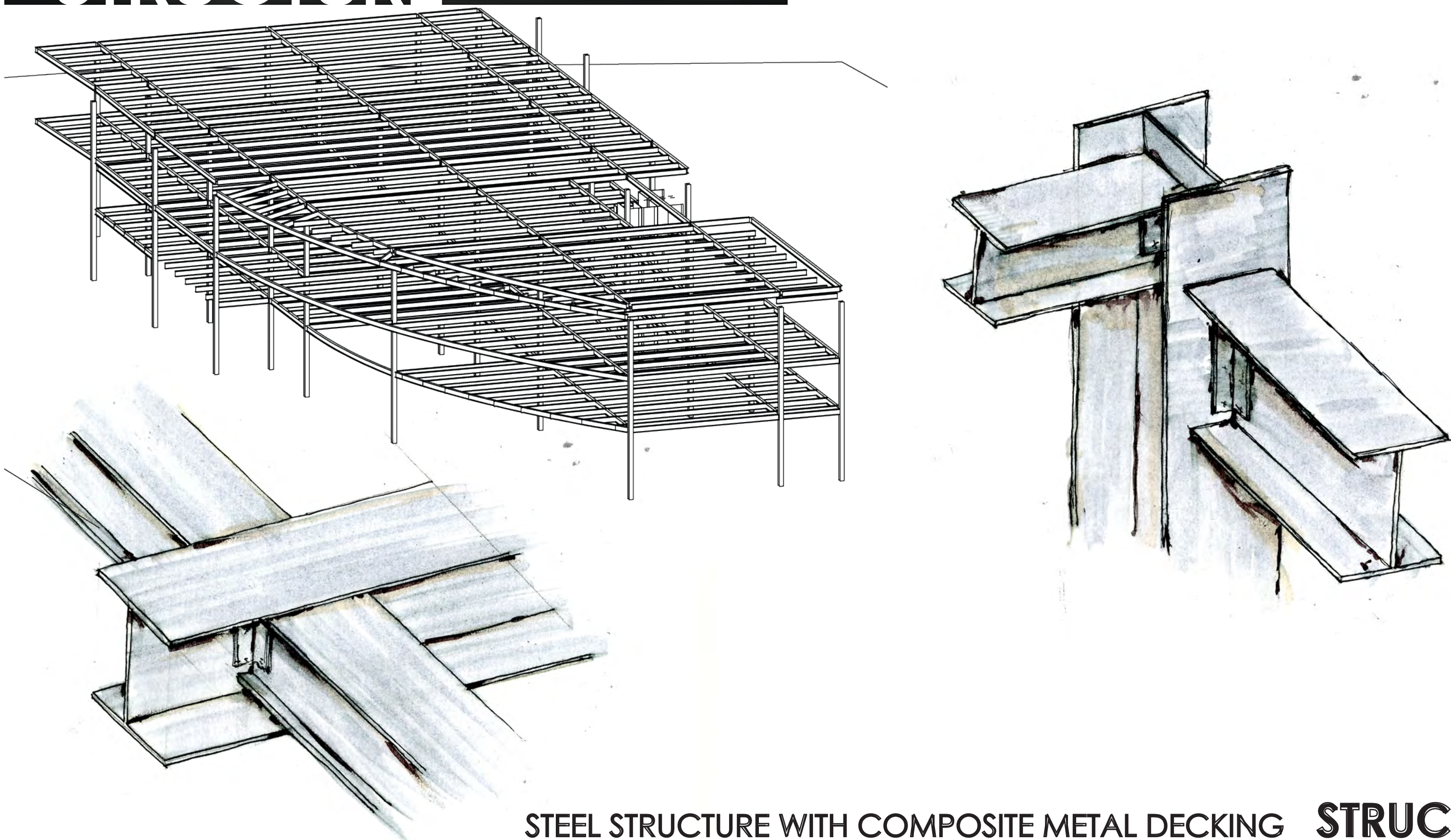
ARHUS KNOWLEDGE CENTER CASE STUDIES

# PROCESS



PROCESS

# STRUCTURE



STEEL STRUCTURE WITH COMPOSITE METAL DECKING STRUCTURE



**Project Type**  
Culinary School

**Location**  
Omaha, Nebraska

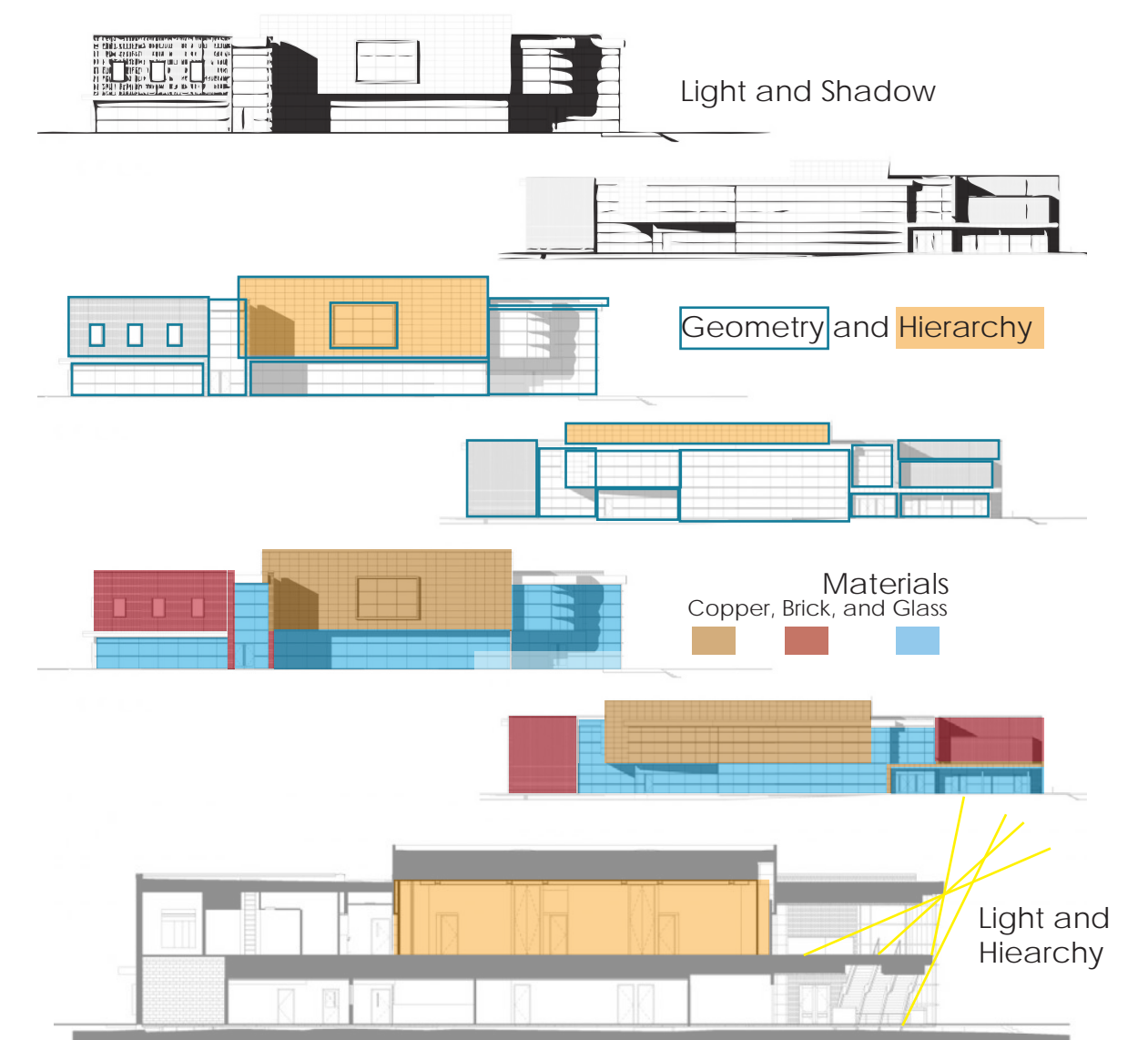
**Design Team**  
HDR Architecture

**Size**  
39,000 sq. ft.

**Year**  
2009

**Project Elements**  
Instructional Spaces  
Services Spaces  
Bakery  
Coffee Shop  
Demonstration Lab  
Production Kitchen  
Theory Labs

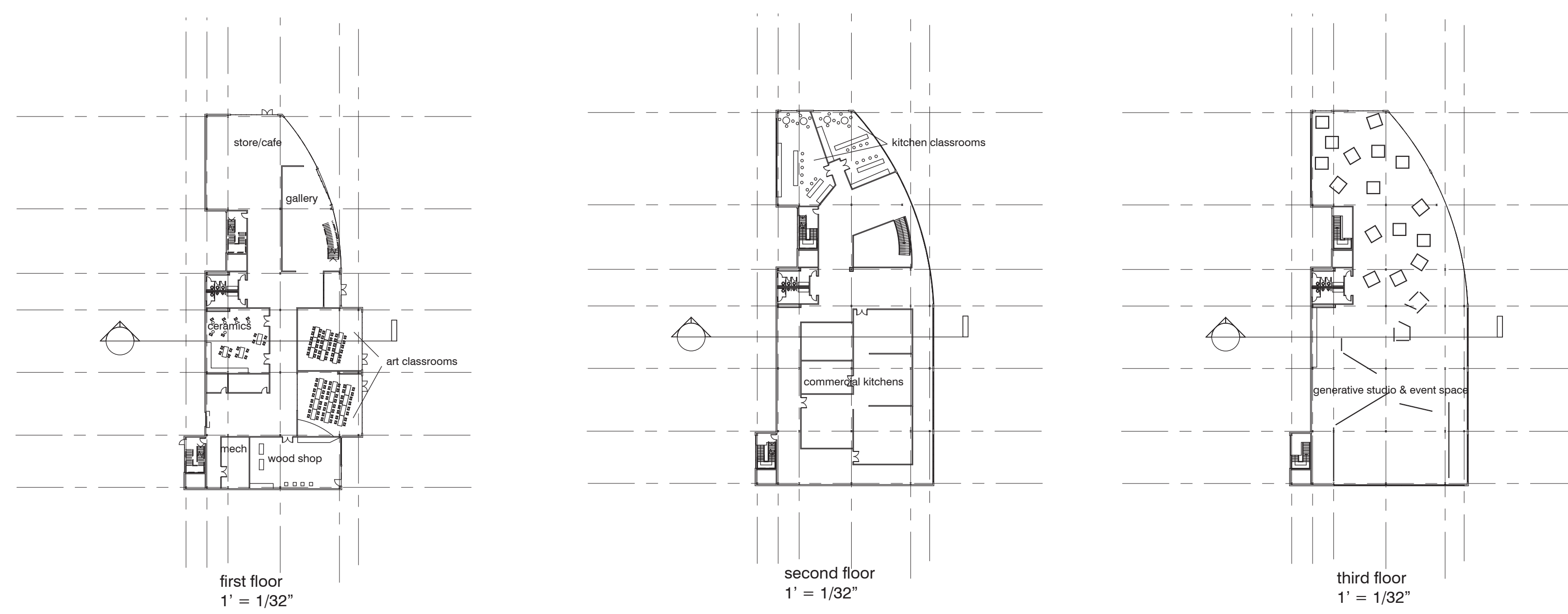
**Characteristics**  
Institutional  
Unique Materials



"The face of the culinary arts world has changed. Chefs have become household names, cooking shows are taking television by storm, and new and exotic restaurants are replacing the old and mundane." -ArchDaily

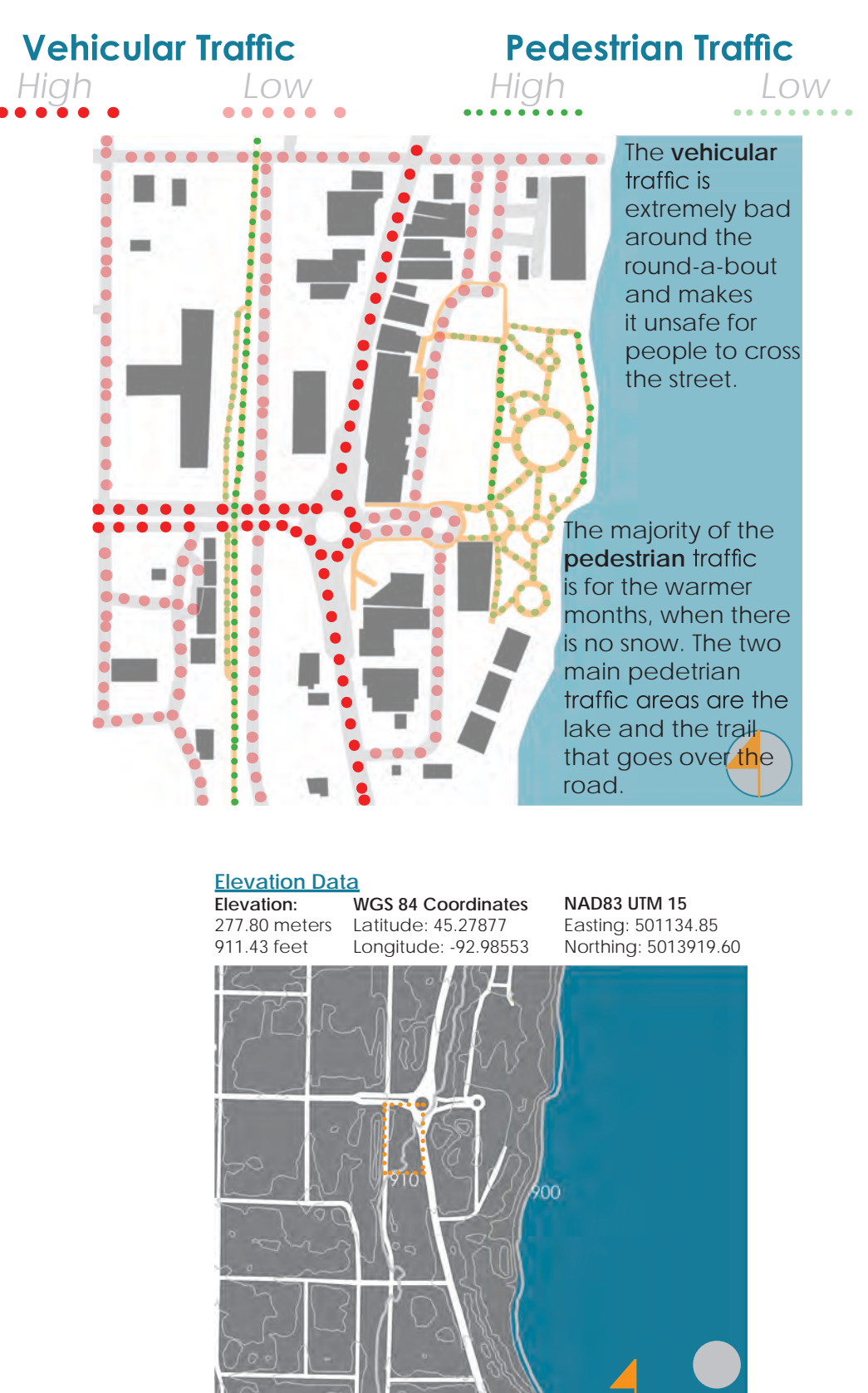
INSTITUTE FOR CULINARY ARTS CASE STUDIES

"Art Projects are often put forth as examples of sustainable development because they improve community collaboration, learning outcomes for children, and civic participation, bridge ethnic and class divides, and contribute to environmental sustainability through connections with nature and "clean" industry" (Fleming 2009)



PROCESS

# SITE ANALYSIS



## Soils

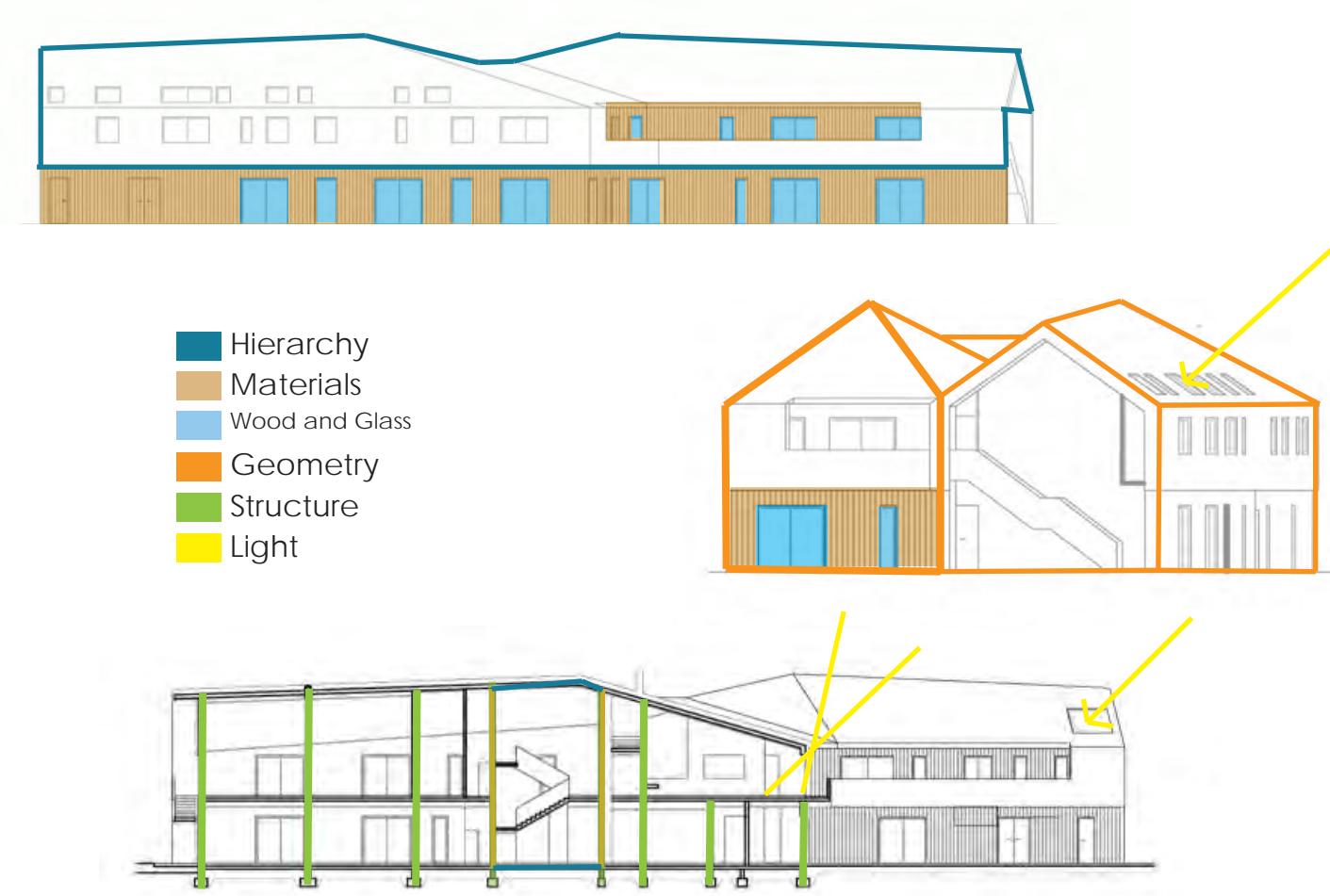
Dominant Soil Order: Alfisols  
Percent Alfisols: 40%  
Dominant Soil Suborder: Udalfs  
Percent Udalfs: 40%  
Parent Material: Not Prime Farmland



Alfisols are moderately leached soils that have relatively high native fertility. These soils have mostly formed under forest and have a subsurface horizon in which clays have accumulated. Alfisols are primarily found in temperate humid and subhumid regions of the world.

Udalfs - Alfisols of humid climates (McDaniel).

## shade and shadow



**Project Type**  
Occupational Activity Center

**Location**  
Menges, Slovenia

**Design Team**  
Jereb in Budja arhitekti

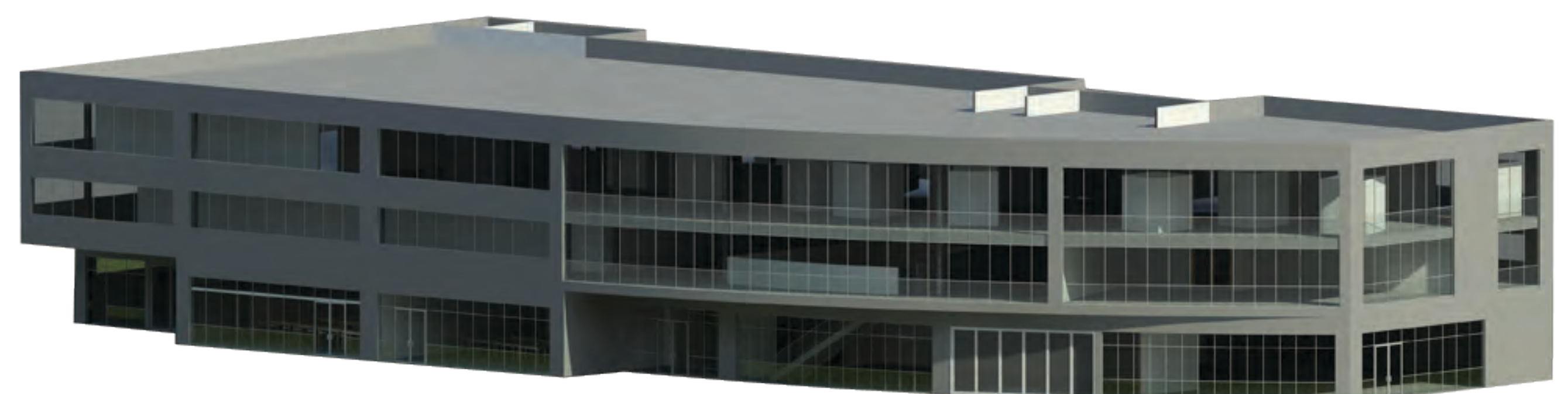
**Size**  
1650 sqm

**Year**  
2013

**Project Elements**  
Offices  
Workshops  
Kitchen  
Dining  
Library  
Gym

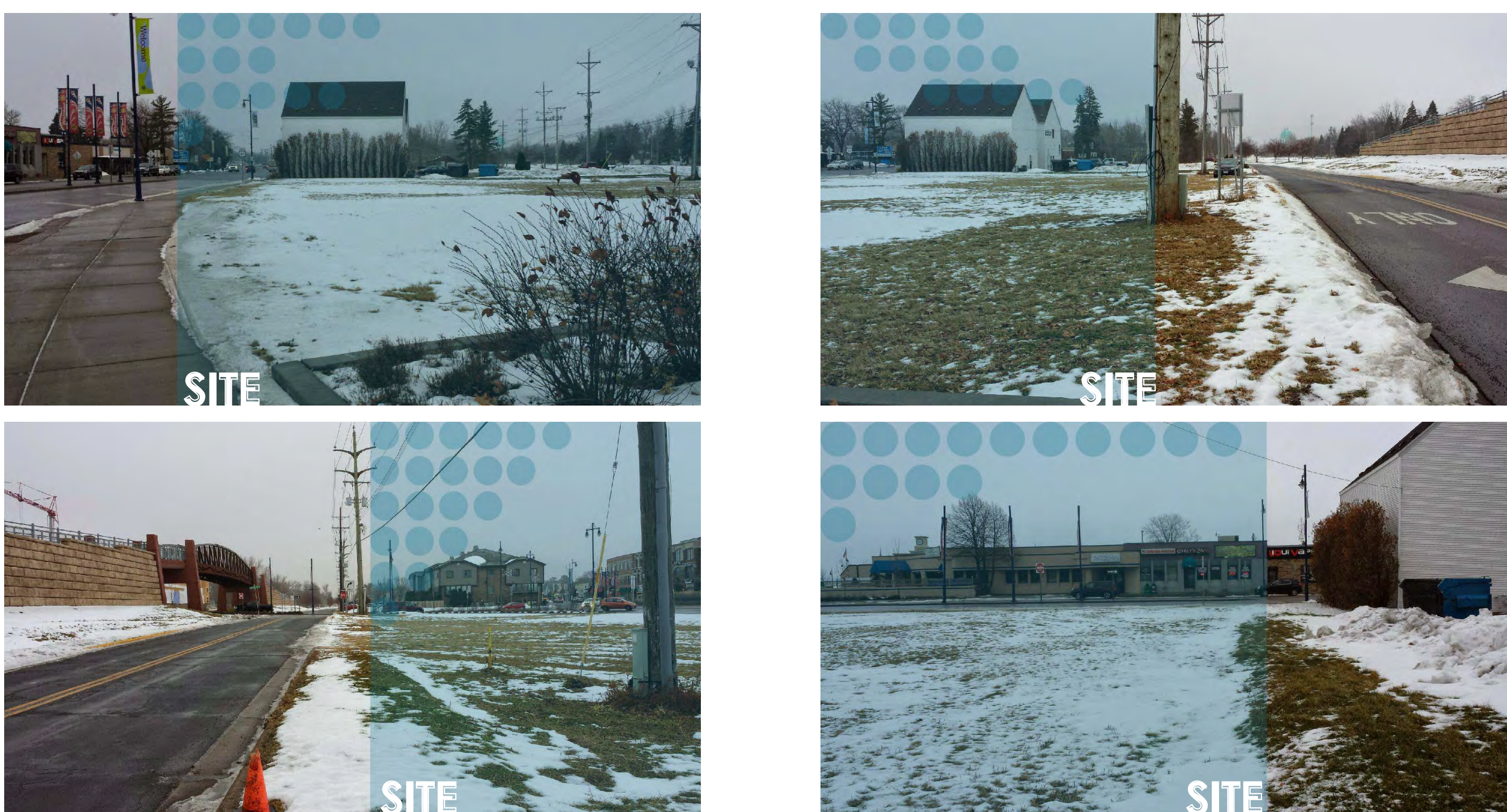
**Characteristics**  
Institutional Care  
Occupational Therapy  
Community Spaces

OCCUPATIONAL ACTIVITY CENTER INCE MENGES CASE STUDIES

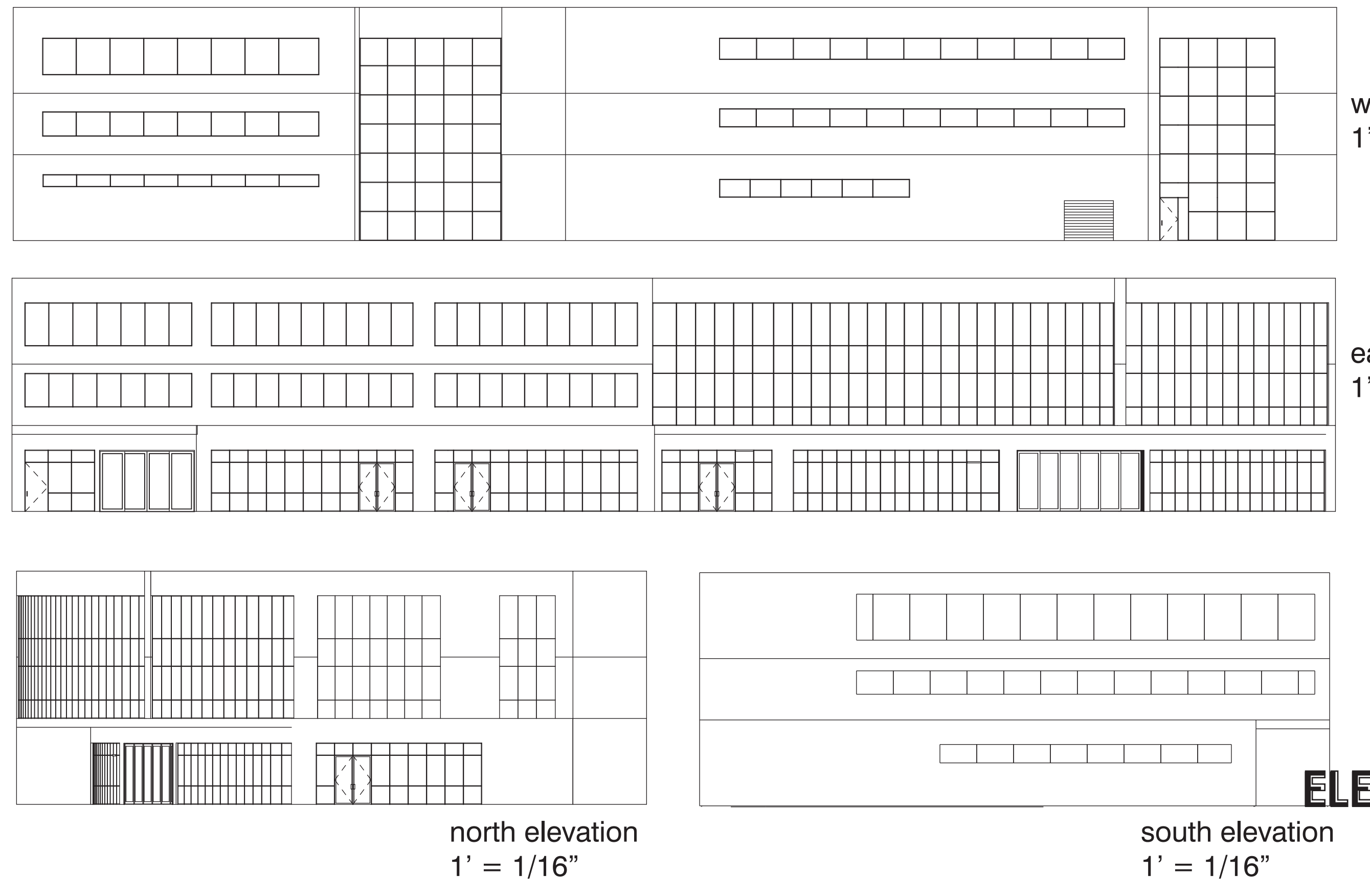


PROCESS

# SITE PICTURES

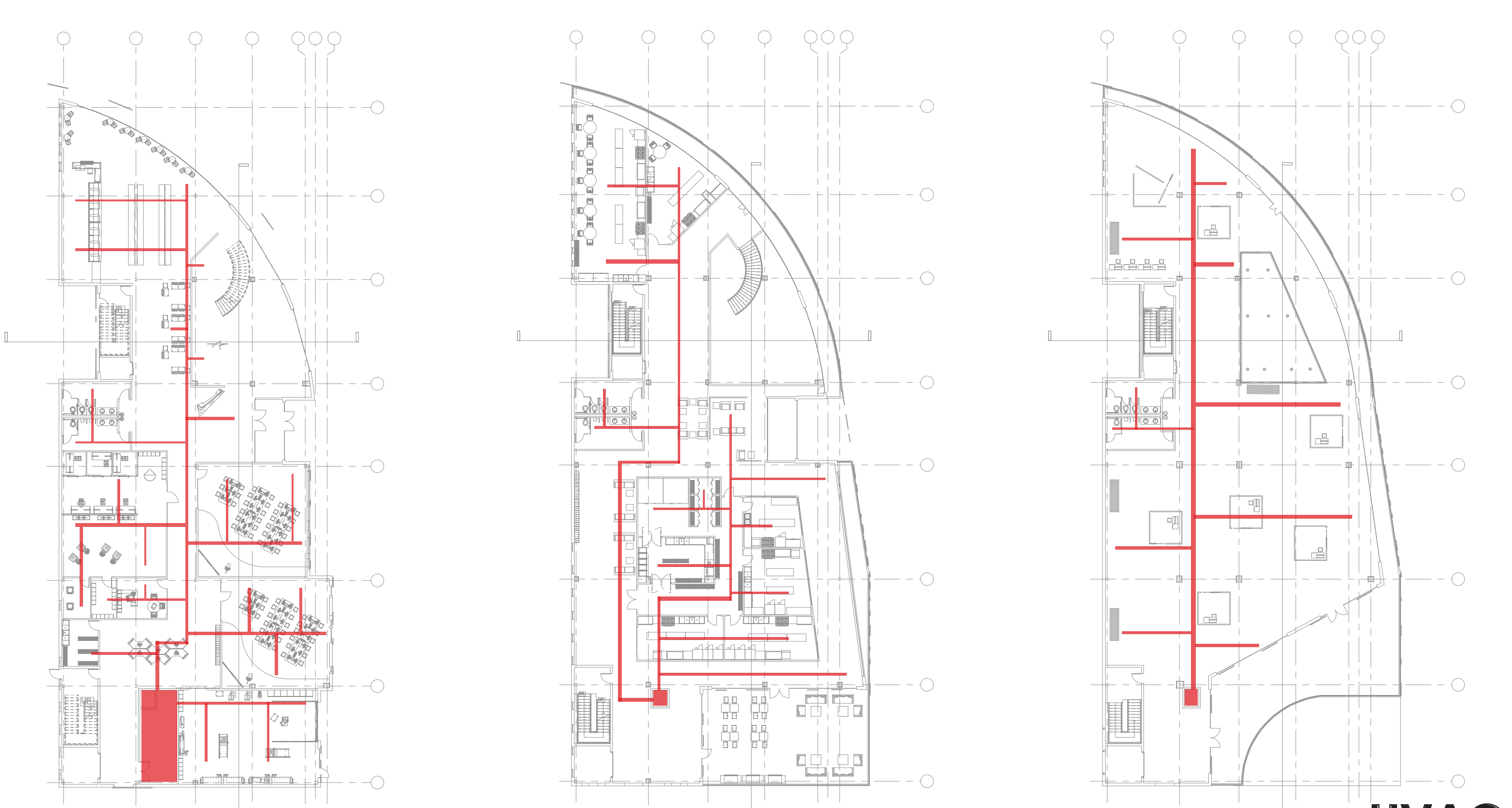


# ELEVATION STUDIES



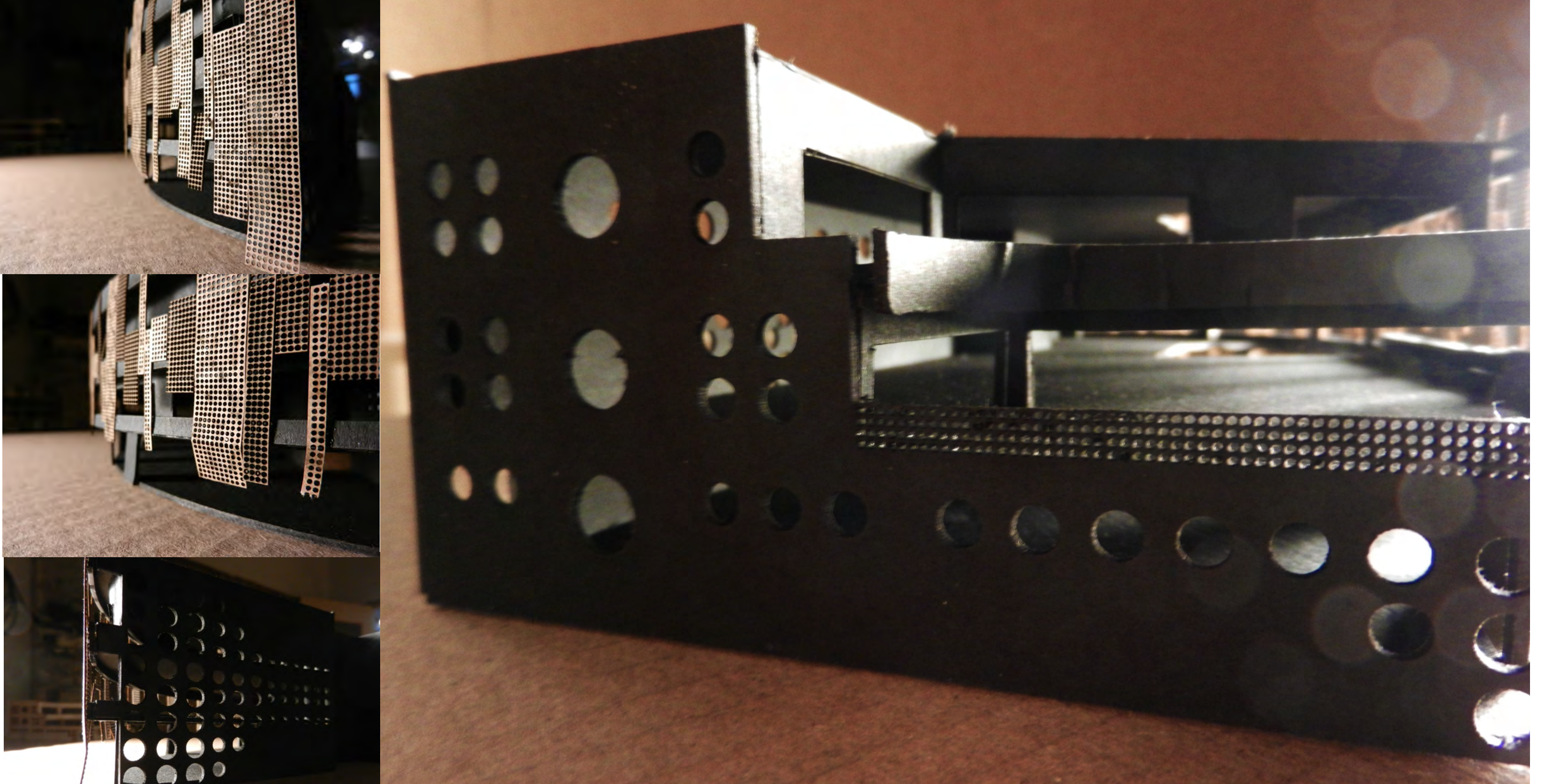
ELEVATION STUDIES

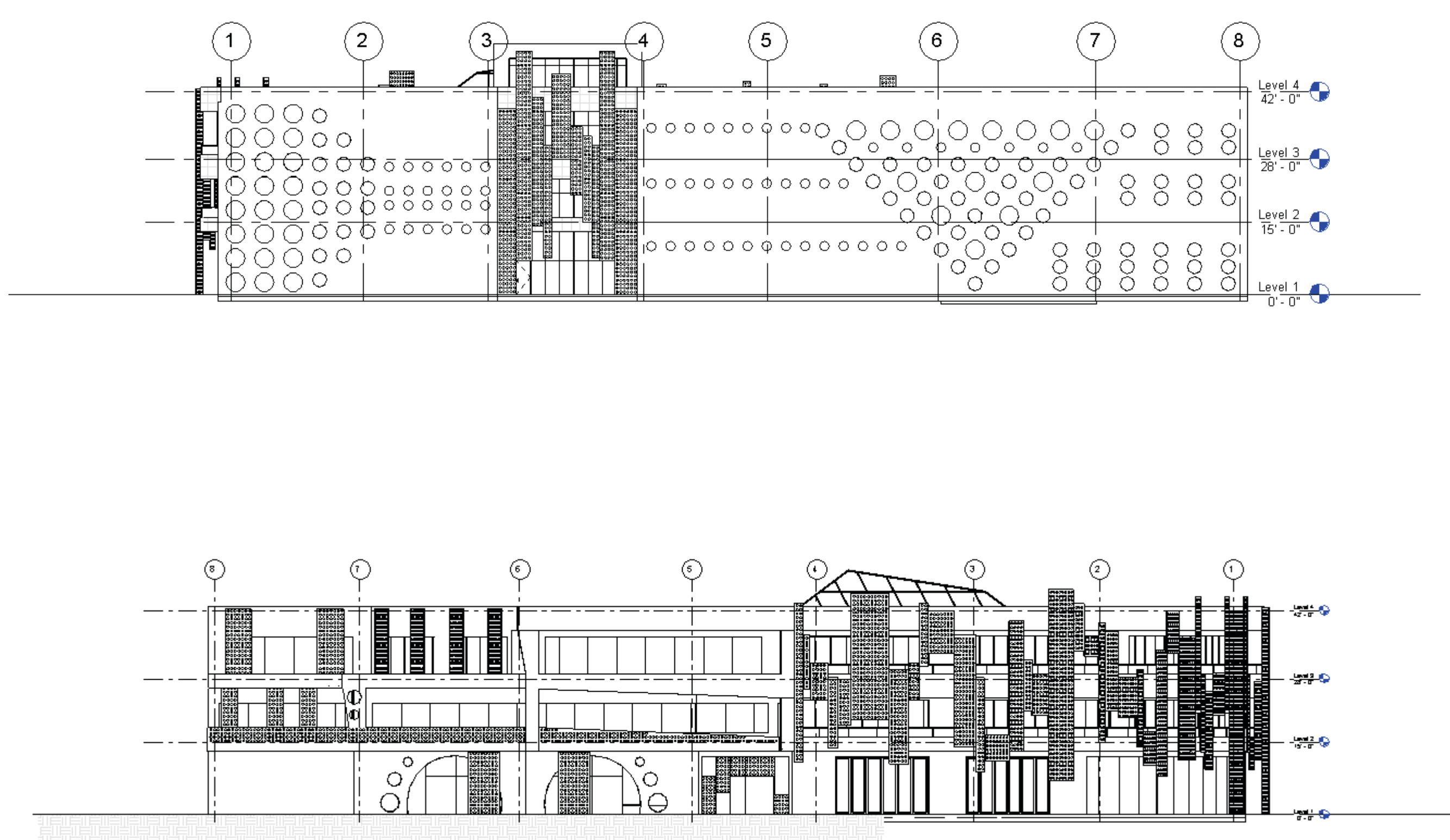
# HVAC



VARIABLE AIR VOLUME SYSTEM HVAC

# MODEL PICTURES

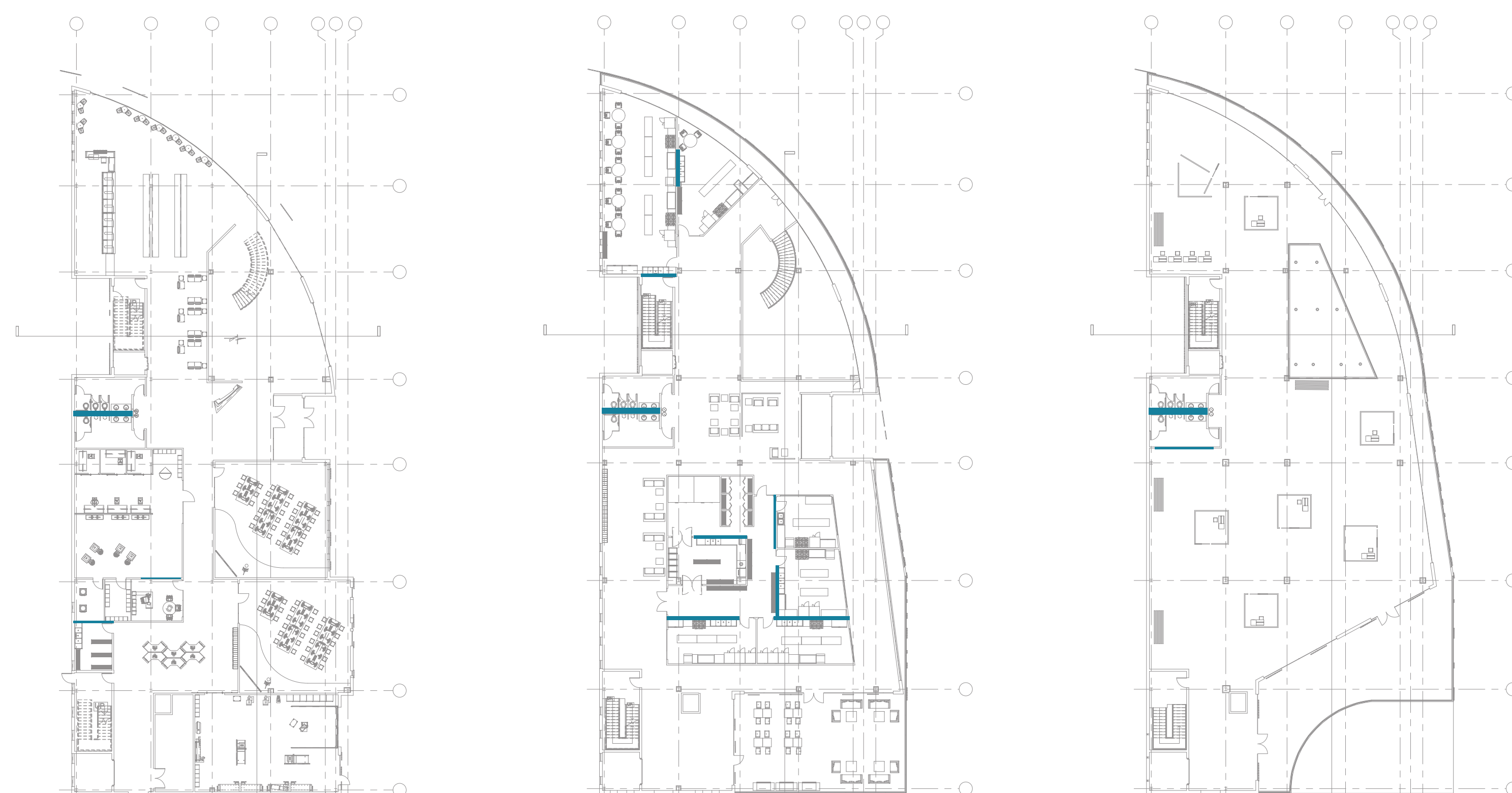




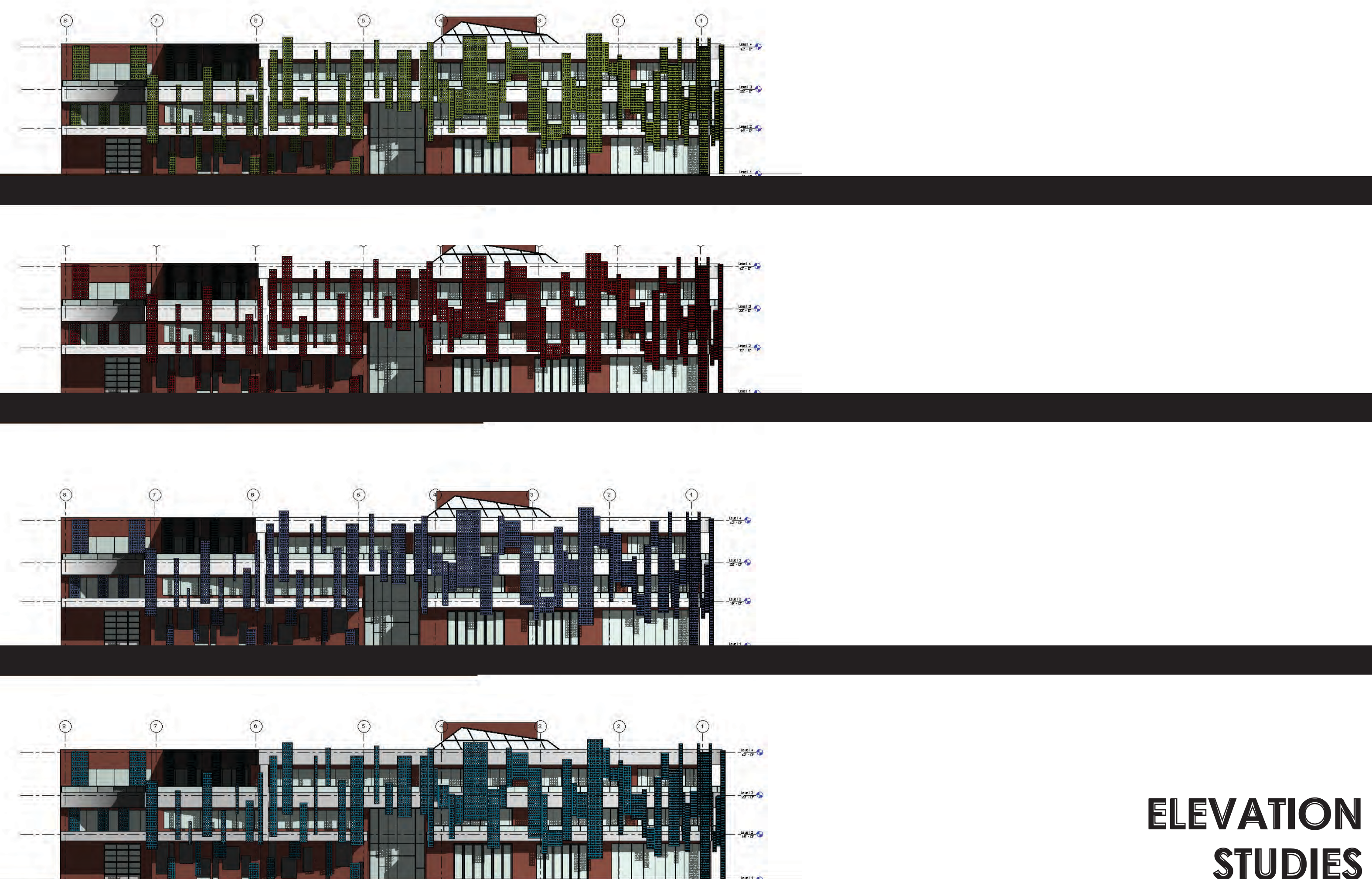
### ELEVATION STUDIES



## PLUMBING

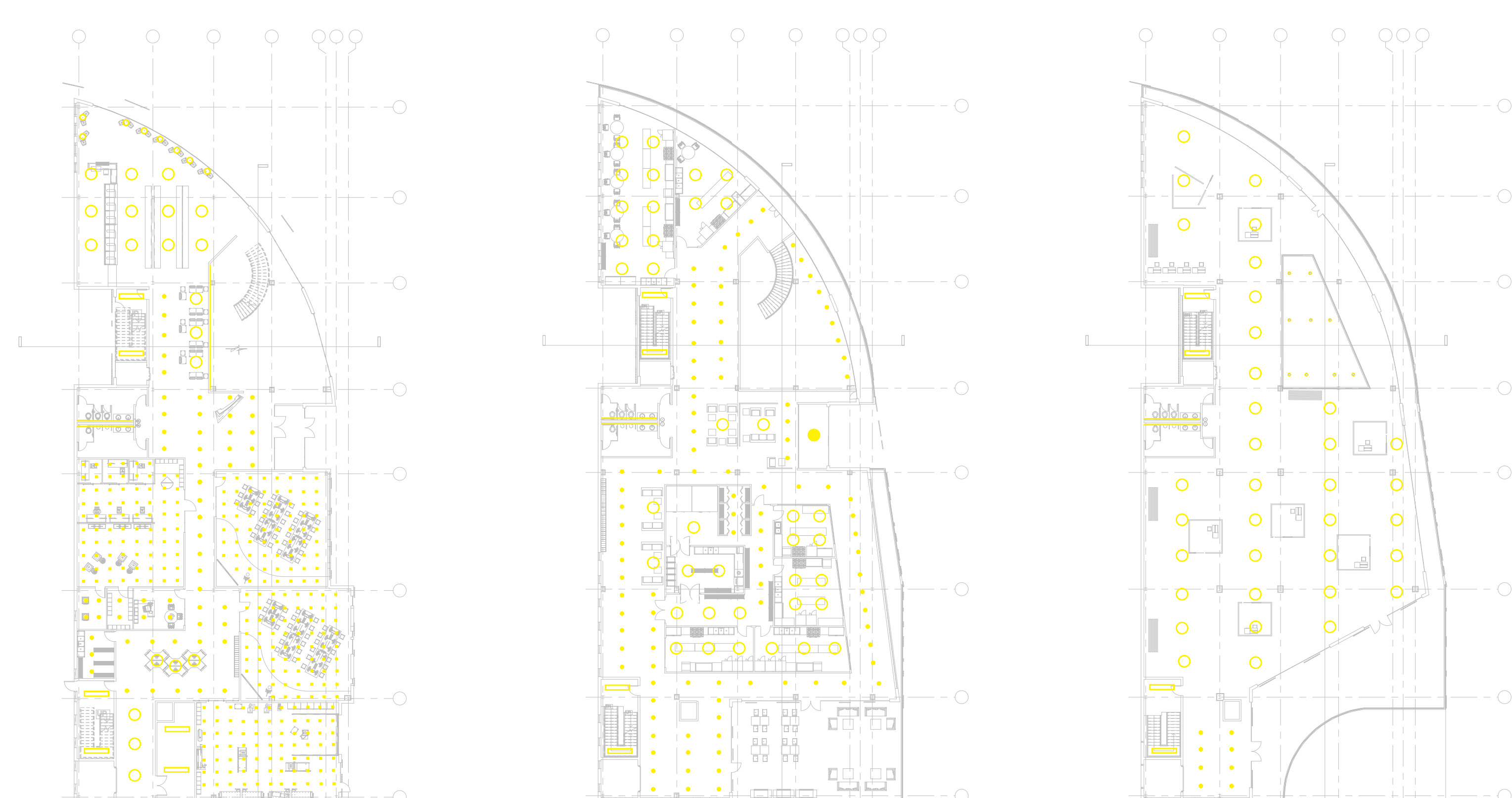


SOME AREAS WILL HAVE PLUMBING WALLS IN PLACE FOR FUTURE SINK SPACE IF NEEDED **PLUMBING**



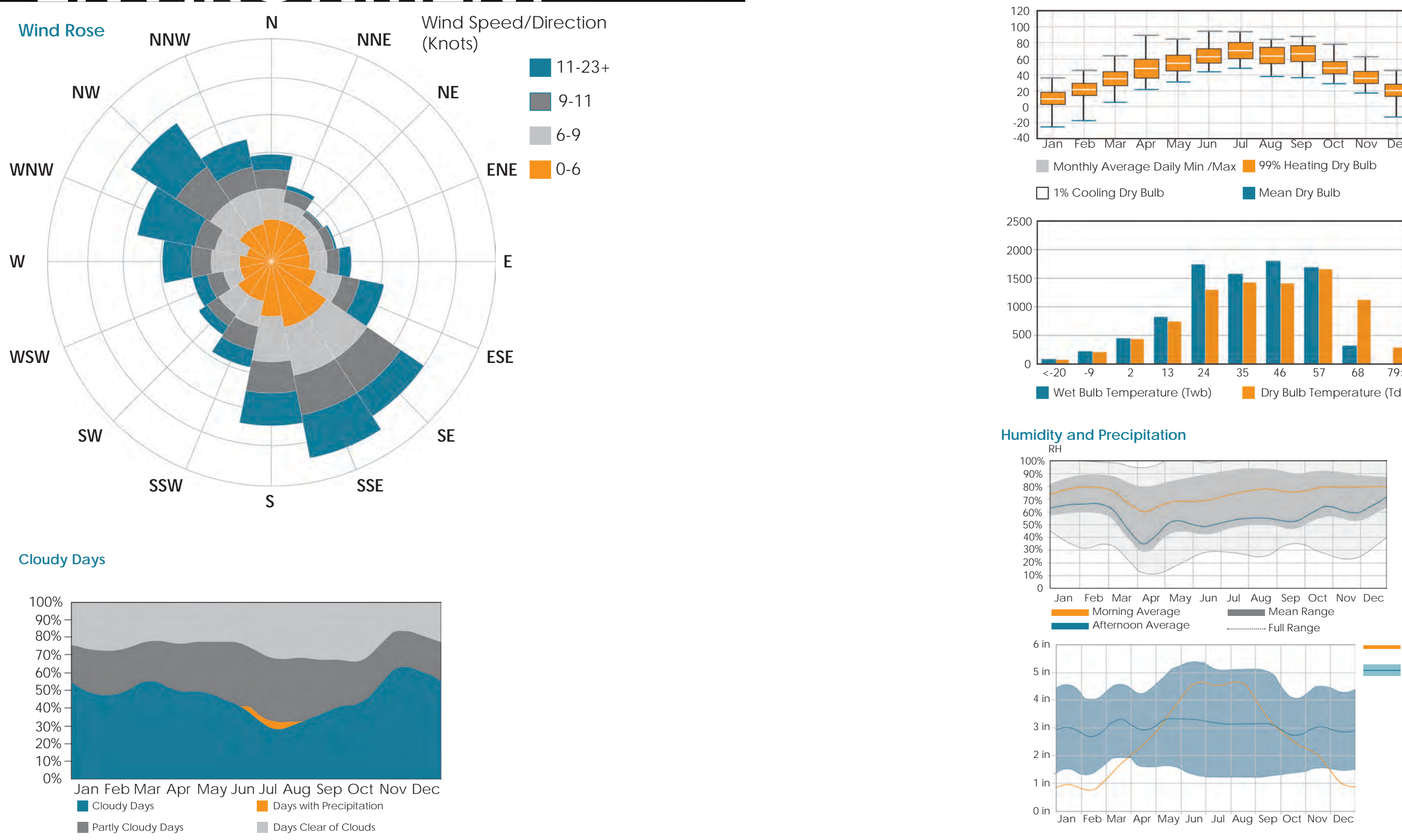
### ELEVATION STUDIES

## ELECTRICAL



LIGHTING THROUGH OUT THE BUILDING WILL BE PROVIDED BY LED FIXTURES **LIGHTING**

## ENVIRONMENT



NMIT Arts & Media is well-known as an arts incubator. The building is comprised by 3 levels of art teaching and 1 level of studio/media facilities. The building was designed for a competition to feature the structure which is comprised of heavy timber construction.

Architects: Iving Smith Jack Architects  
Location: Nelson, New Zealand  
Built: 2010  
Area: 2,900 sqm

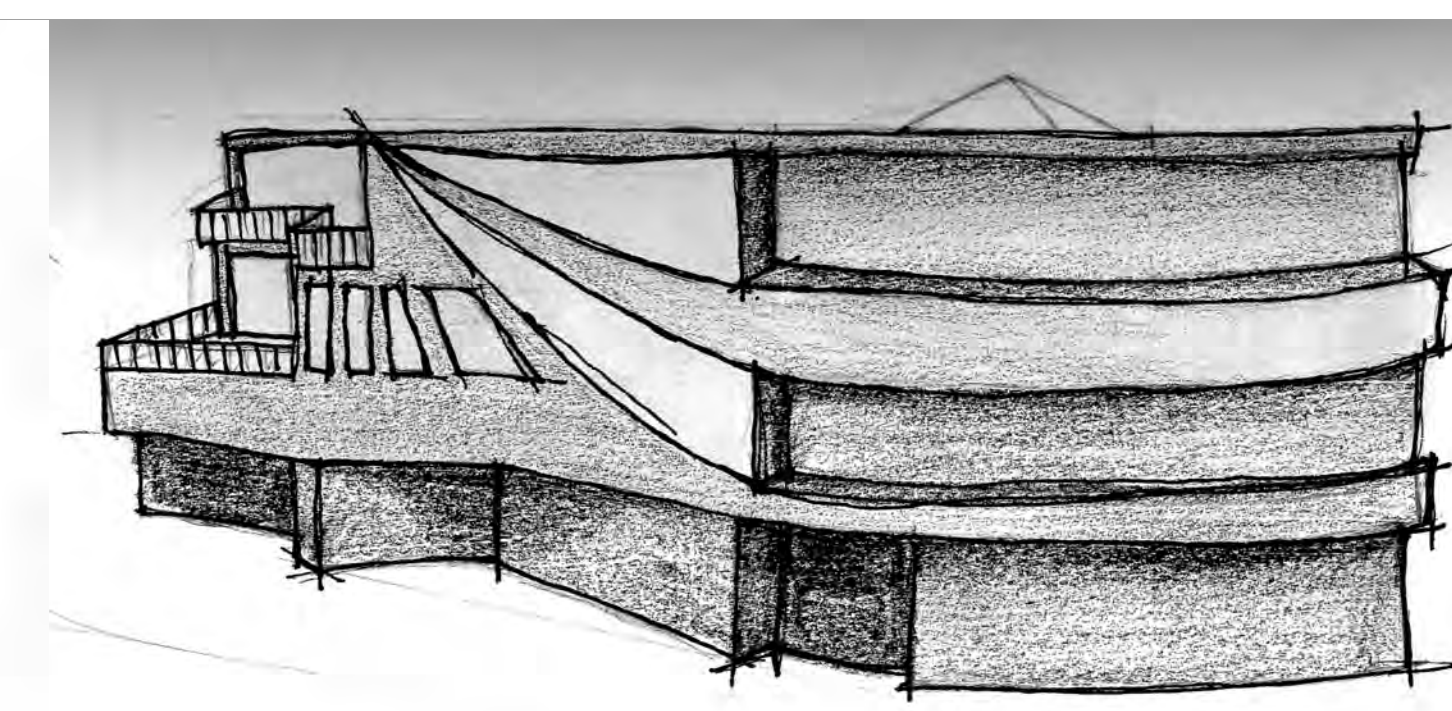
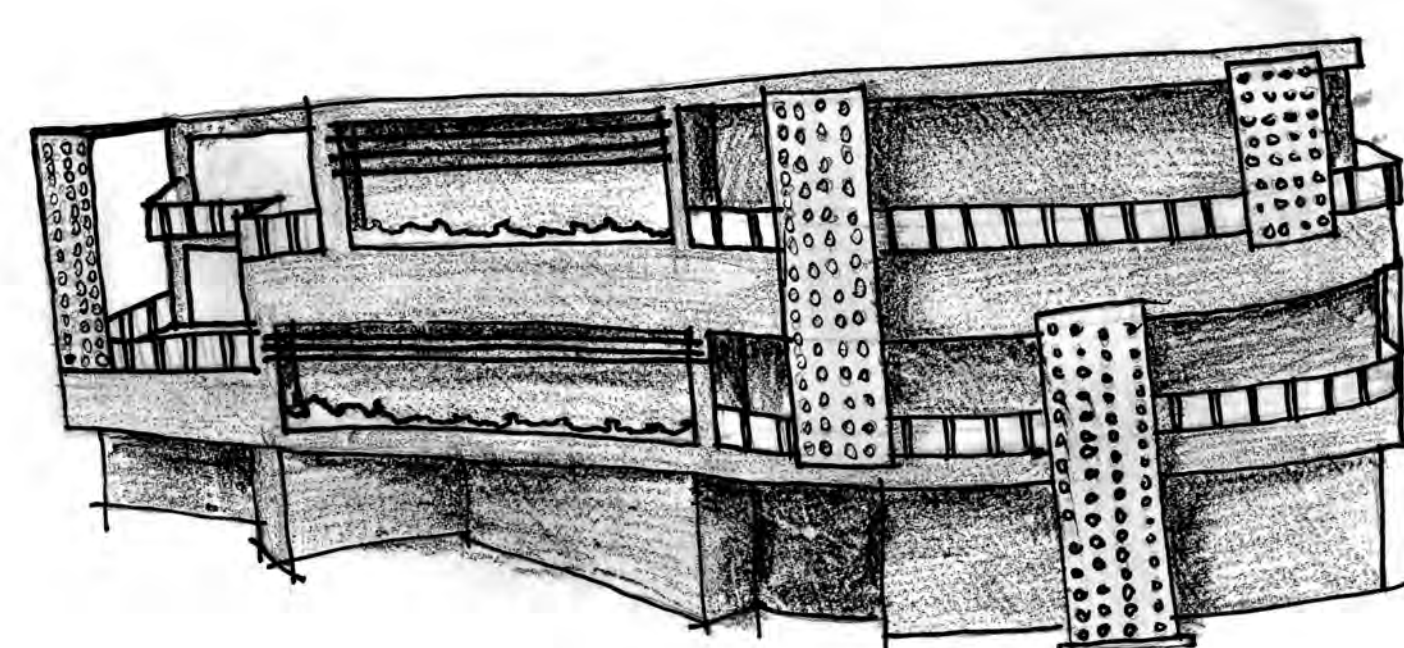
"Regardless of artisan entrepreneurs' motivations, joining organized peer networks (in this context, seller teams) allows them to network with like-minded peers and foster stronger ties. Seller teams are voluntarily formed on the basis of common interests, typically have clearly state objectives, and a framework conducive to the development of trust. Thus, artisan entrepreneurs who join seller teams may not only report receiving more peer assistance overall, as would be expected from networking theory, teams may be an especially effective way to receive better quality and/or trusted advice and support" (Kuhn & Galloway 2013).



### NMIT ARTS & MEDIA: ART INCUBATOR CASE STUDIES

"The **creative economy** is revitaliz[ing] manufacturing, services, retailing, and entertainment industries. It is changing where people want to live, work and learn - where they think, invent and produce. The **creative economy** is based on a new way of thinking and doing. The primary inputs are our individual talent or skill. These inputs may be familiar or novel; what is more important is that our creativity transforms them in novel ways. In some sectors the output value depends on their uniqueness; in others, on how easily it can be copied and sold to large numbers of people. The heartlands are art, culture, design and innovation."

-John Howkins



### PROCESS



SITE



SITE

## MATERIALS



CONCRETE IDEAS

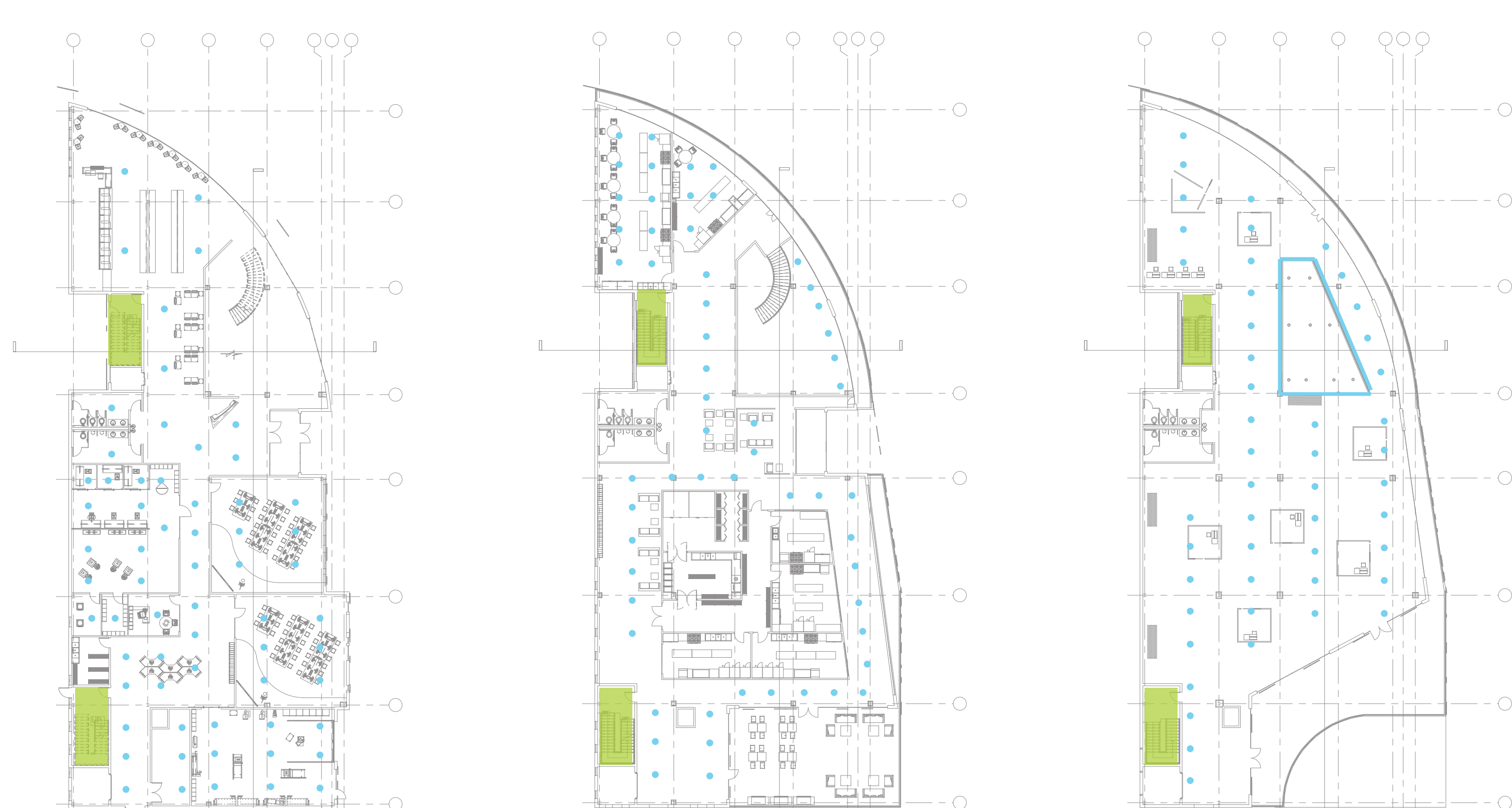
BRICK IDEAS

METAL PANEL IDEAS

SITE

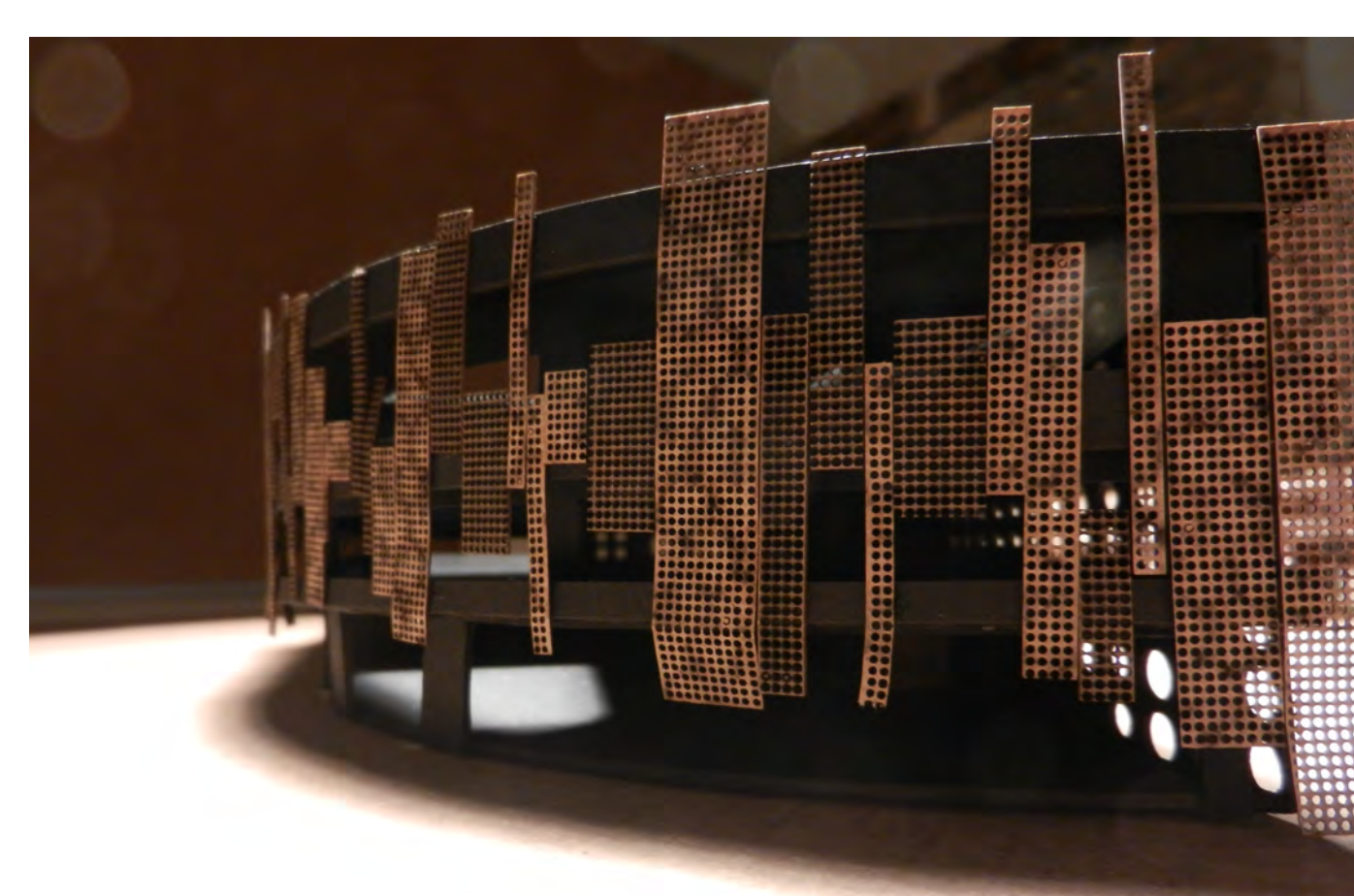
MATERIALS

## LIFE SAFETY



THIRD FLOOR INCLUDES A DELUGE SYSTEM FOR THE GLASS ON THE INTERIOR **SAFETY**

## PASSIVE STRATEGIES



EXTERIOR SHADING DEVICES

**GLASS OVER GALLERY SPACE**  
PHOTOVOLTAIC TRANSPARENT GLASS  
-ALLOWS ENTRANCE OF SUNLIGHT WHILE BLOCKING UV RADIATION AND INFRARED RADIATION.

**WINDOWS**  
OPERABLE WINDOWS FOR CROSS VENTILATION

**RAIN WATER HARVESTING SYSTEM**