

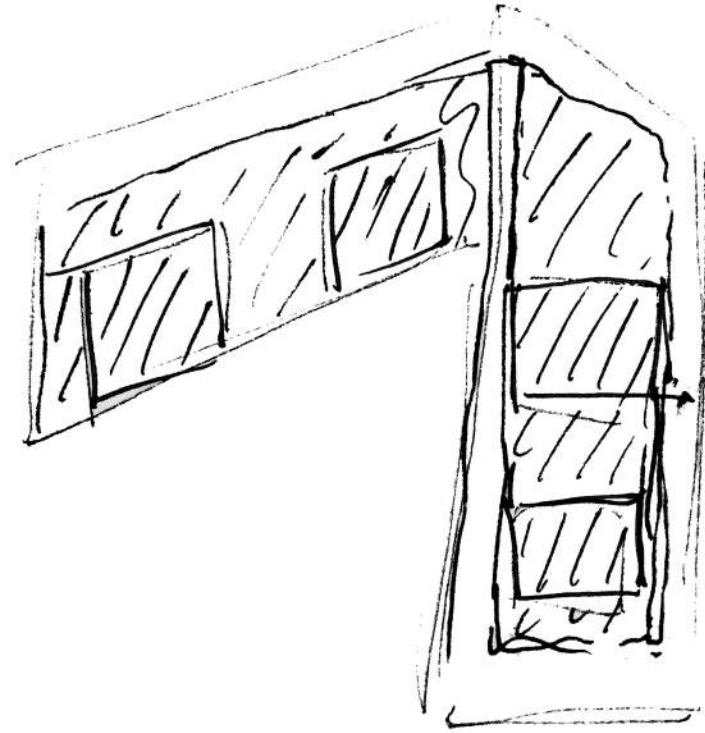


WETLANDS RESEARCH FACILITY

ALLIE HIRSTEIN | NORTH DAKOTA STATE UNIVERSITY | ARCH 771 | FALL 2015



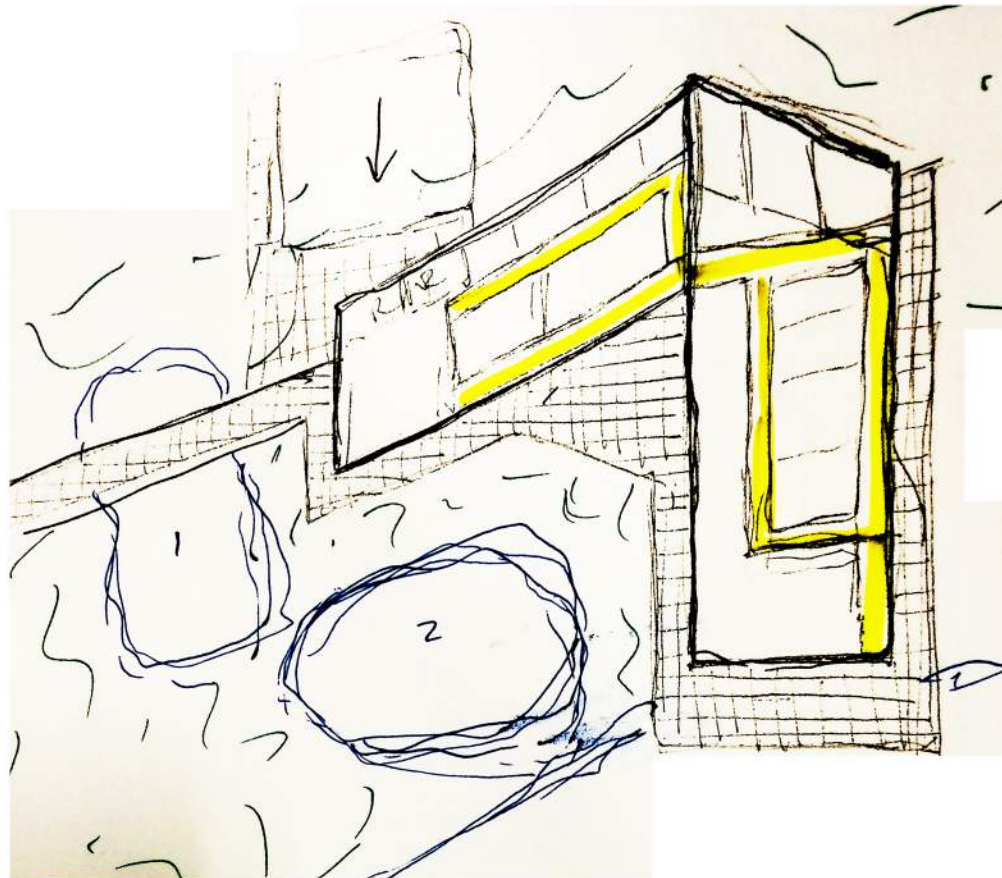
PROCESS



LOOKING EAST



FOREST NORTH OF SITE



LAKE TO THE SOUTH



LOOKING WEST AT THE SITE ENTRANCE

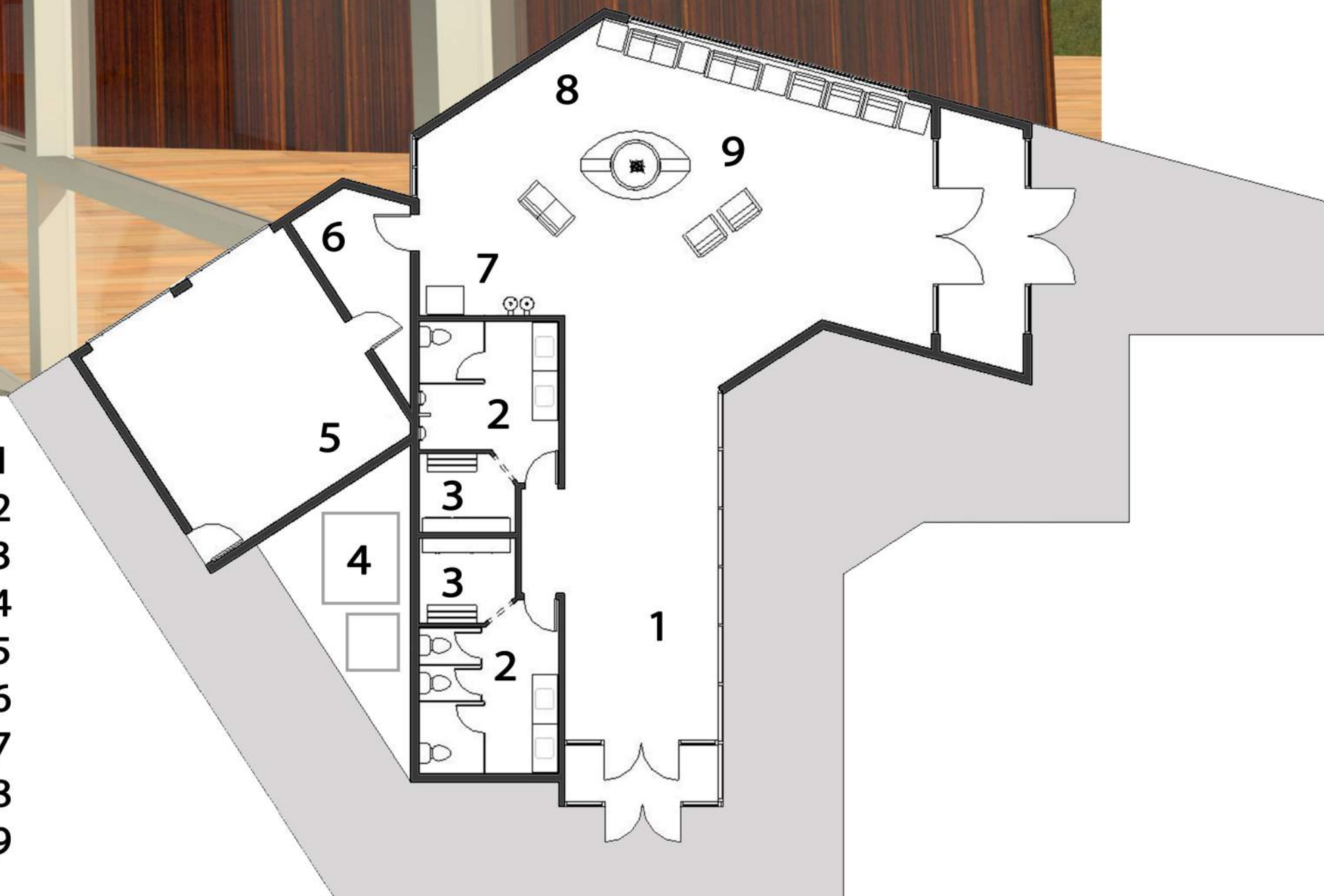
SITE PLAN





ENTRY PAVILLION

- LOBBY 1
- RESTROOMS 2
- CHANGING ROOMS 3
- BACK UP GENERATOR 4
- ATV STORAGE 5
- MECHANICAL 6
- VENDING 7
- GALLERY 8
- LOUNGE 9



RESEARCH LABORATORY



- | | | | |
|---|--------------------|----|--------------------|
| 1 | RECEPTION | 10 | SERVER ROOM |
| 2 | SEATING AREA | 11 | LABORATORY |
| 3 | MECHANICAL | 12 | LAB STORAGE |
| 4 | PUBLIC RESTROOMS | 13 | LAB RESTROOM |
| 5 | LOUNGE AREA | 14 | EMPLOYEE RESTROOM |
| 6 | DIRECTOR'S OFFICE | 15 | WORKROOM |
| 7 | PRESENTATION SPACE | 16 | PRIVATE OFFICE |
| 8 | DISPLAY AREA | 17 | CONFERENCE ROOM |
| 9 | BREAKOUT SPACES | 18 | GREENHOUSE STORAGE |
| | | 19 | GREENHOUSE |
| | | 20 | RAIN GARDEN |



LOBBY PERSPECTIVE

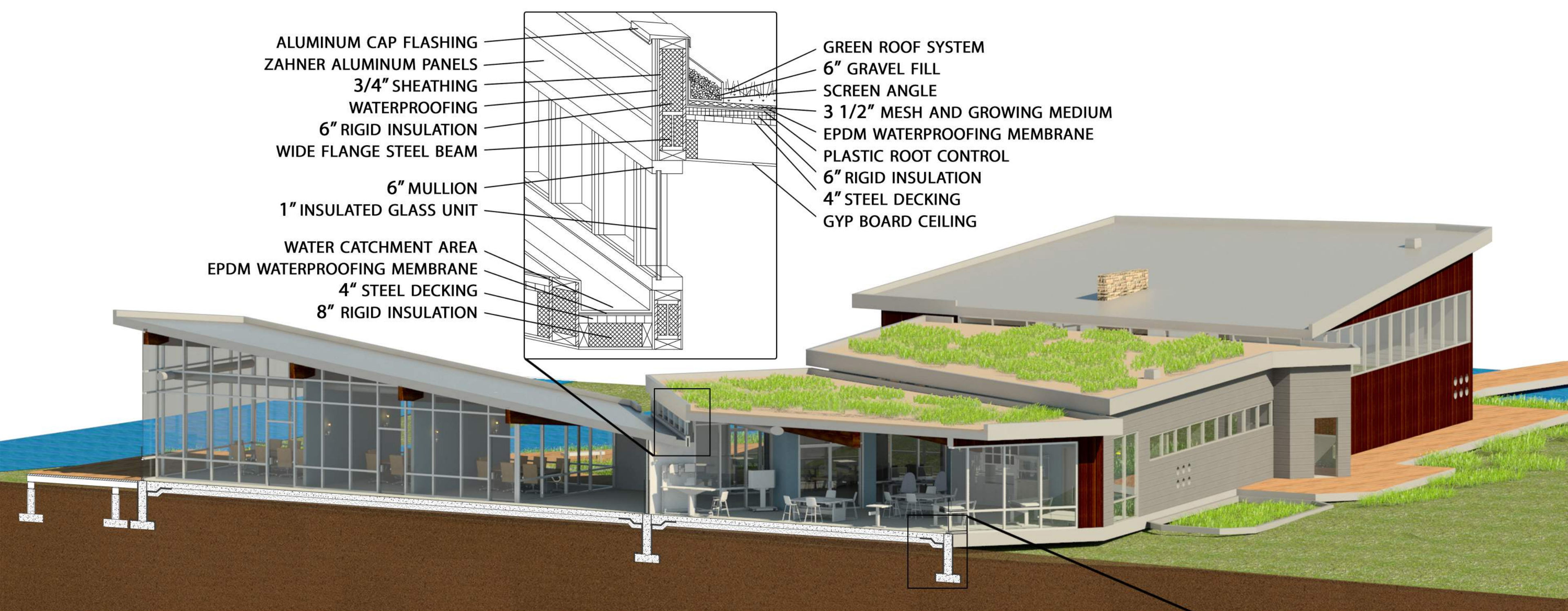


GREENHOUSE



ALUMINUM CAP FLASHING
 ZAHNER ALUMINUM PANELS
 3/4" SHEATHING
 WATERPROOFING
 6" RIGID INSULATION
 WIDE FLANGE STEEL BEAM
 6" MULLION
 1" INSULATED GLASS UNIT
 WATER CATCHMENT AREA
 EPDM WATERPROOFING MEMBRANE
 4" STEEL DECKING
 8" RIGID INSULATION

GREEN ROOF SYSTEM
 6" GRAVEL FILL
 SCREEN ANGLE
 3 1/2" MESH AND GROWING MEDIUM
 EPDM WATERPROOFING MEMBRANE
 PLASTIC ROOT CONTROL
 6" RIGID INSULATION
 4" STEEL DECKING
 GYP BOARD CEILING

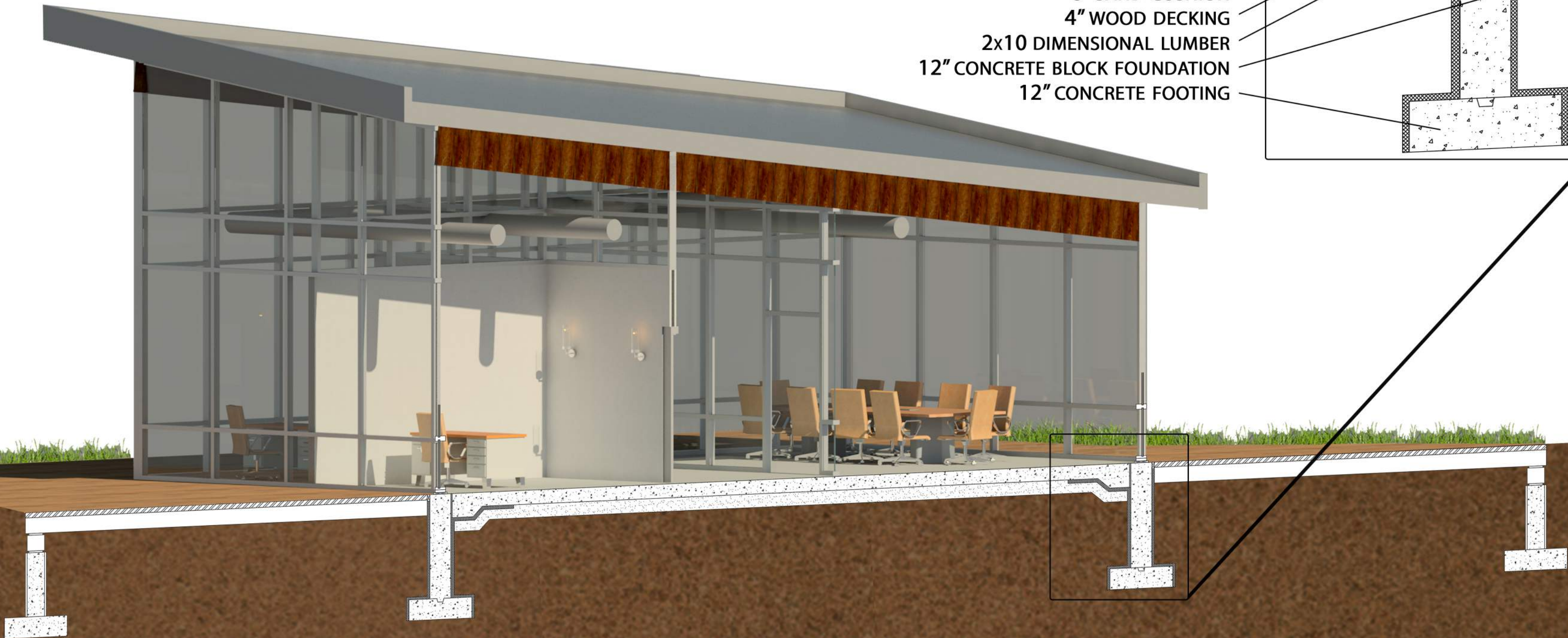
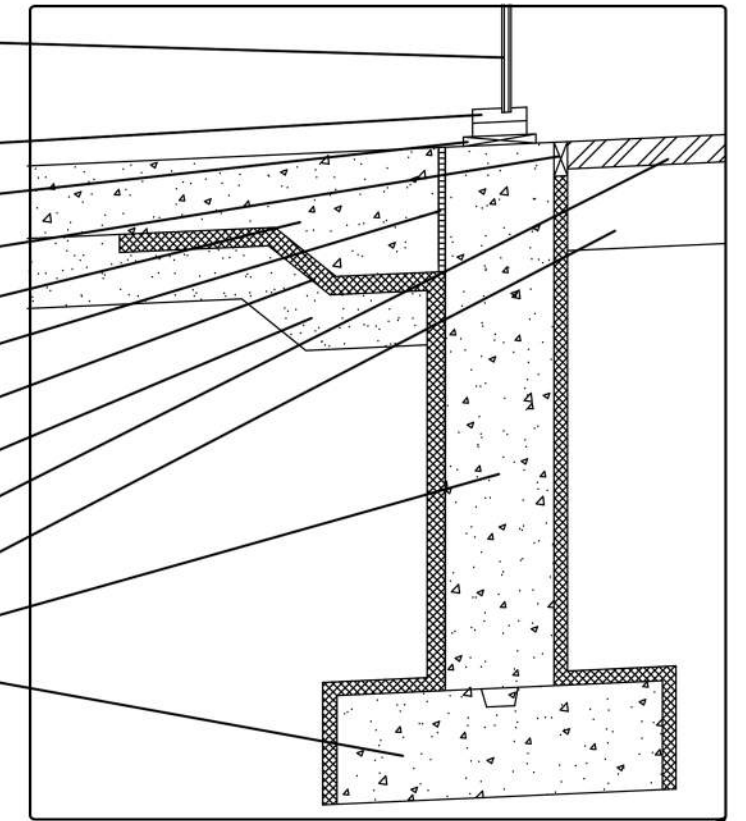


LABORATORY SECTION PERSPECTIVE

1" INSULATED GLASS
 FOR OPERABLE WINDOWS
 6" MULLION
 2" SHIM
 INSULATION CAP
 8" CONCRETE SLAB ON GRADE
 EPDM WATERPROOFING MEMBRANE
 2" RIGID INSULATION
 6" SAND CUSHION
 12" CONCRETE BLOCK FOUNDATION
 12" CONCRETE FOOTING

TRANSVERSE SECTION PERSPECTIVE

- 1" INSULATED GLASS FOR OPERABLE WINDOWS
- 6" MULLIONS
- 2" SHIM
- INSULATION CAP
- 8" CONCRETE SLAB ON GRADE
- EPDM WATERPROOFING MEMBRANE
- 2" RIGID INSULATION
- 6" SAND CUSHION
- 4" WOOD DECKING
- 2x10 DIMENSIONAL LUMBER
- 12" CONCRETE BLOCK FOUNDATION
- 12" CONCRETE FOOTING



OUTDOOR CIRCULATION

