



# ORE DOCK NO. 1

MINING + MARITIME MUSEUM

SUPERIOR, WISCONSIN

"Come gather 'round friends and I'll tell you a tale, of when  
The red iron pits they ran plenty.  
But the cardboard filled windows and old men on the benches  
Tell you now that the whole town is empty..."

"The iron ore poured as the years passed the door, the drag  
Lines an' the shovels they was a-humming.  
'Till one day my brother failed to come home the same as my  
Father before him..."

"So the mining gates locked, and the red iron rotted, and the  
room it smelled heavy from drinking.  
Where the sad, silent song made the hour twice as long as I  
Waited for the sun to go sinking..."

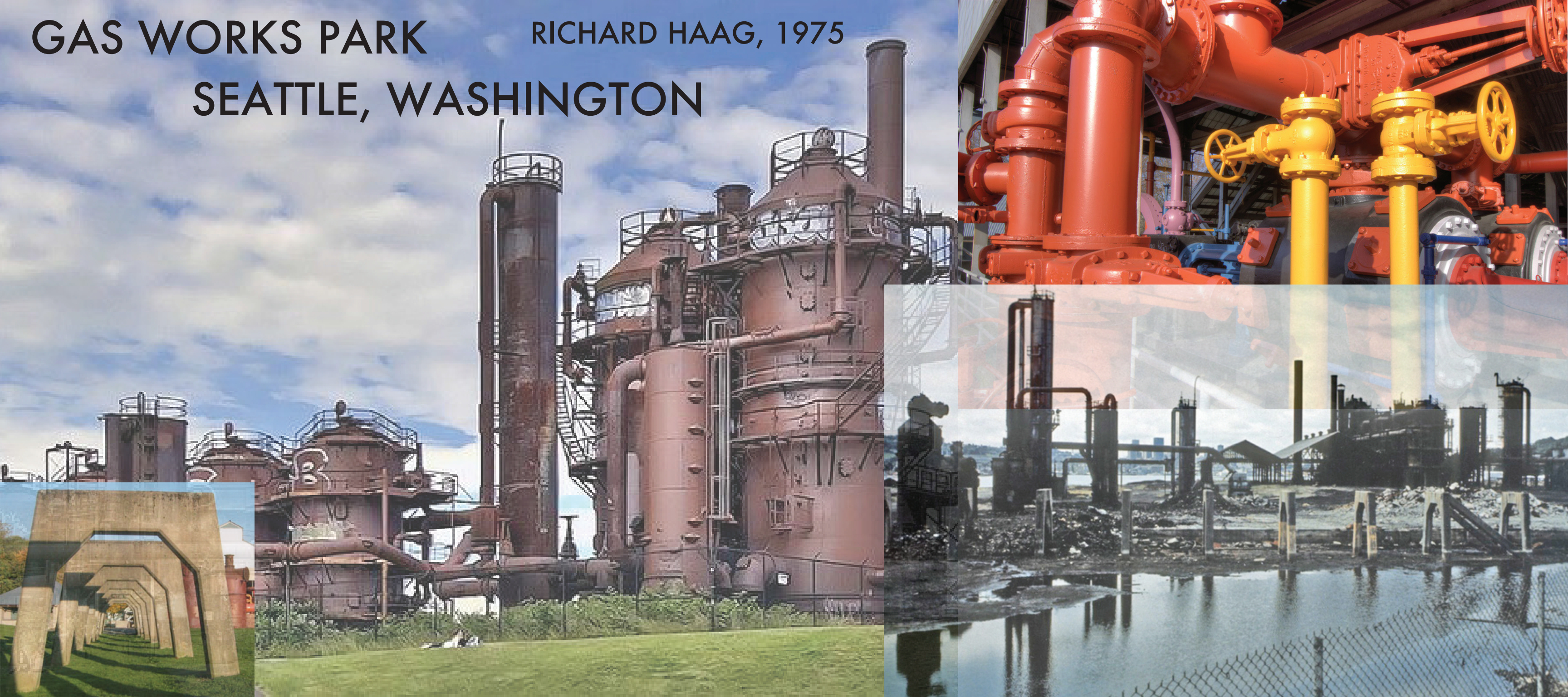
- Bob Dylan, North Country Blues.



# GAS WORKS PARK

RICHARD HAAG, 1975

## SEATTLE, WASHINGTON





# MILL CITY MUSEUM MSR ARCHITECTS, 2003 MINNEAPOLIS, MN



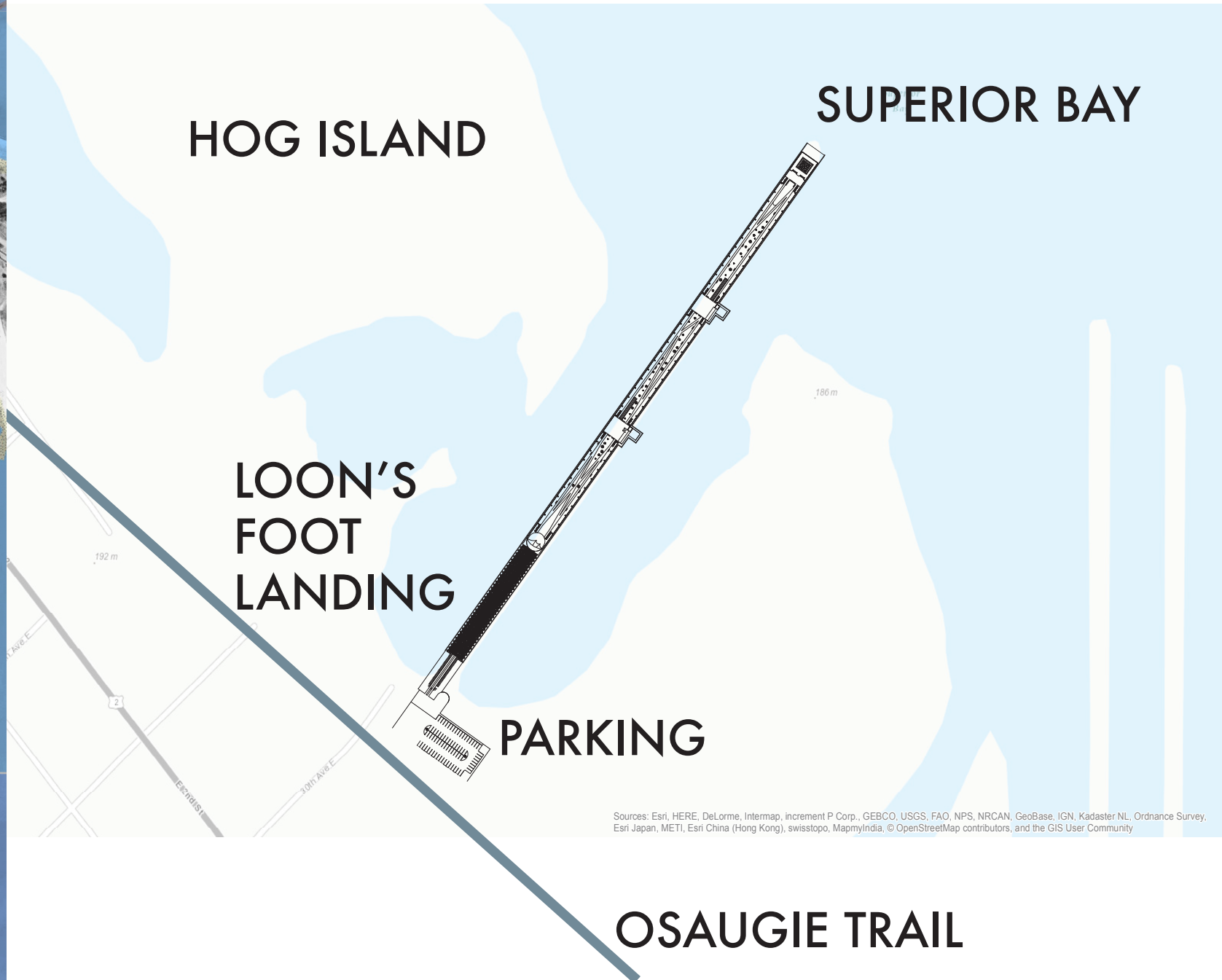
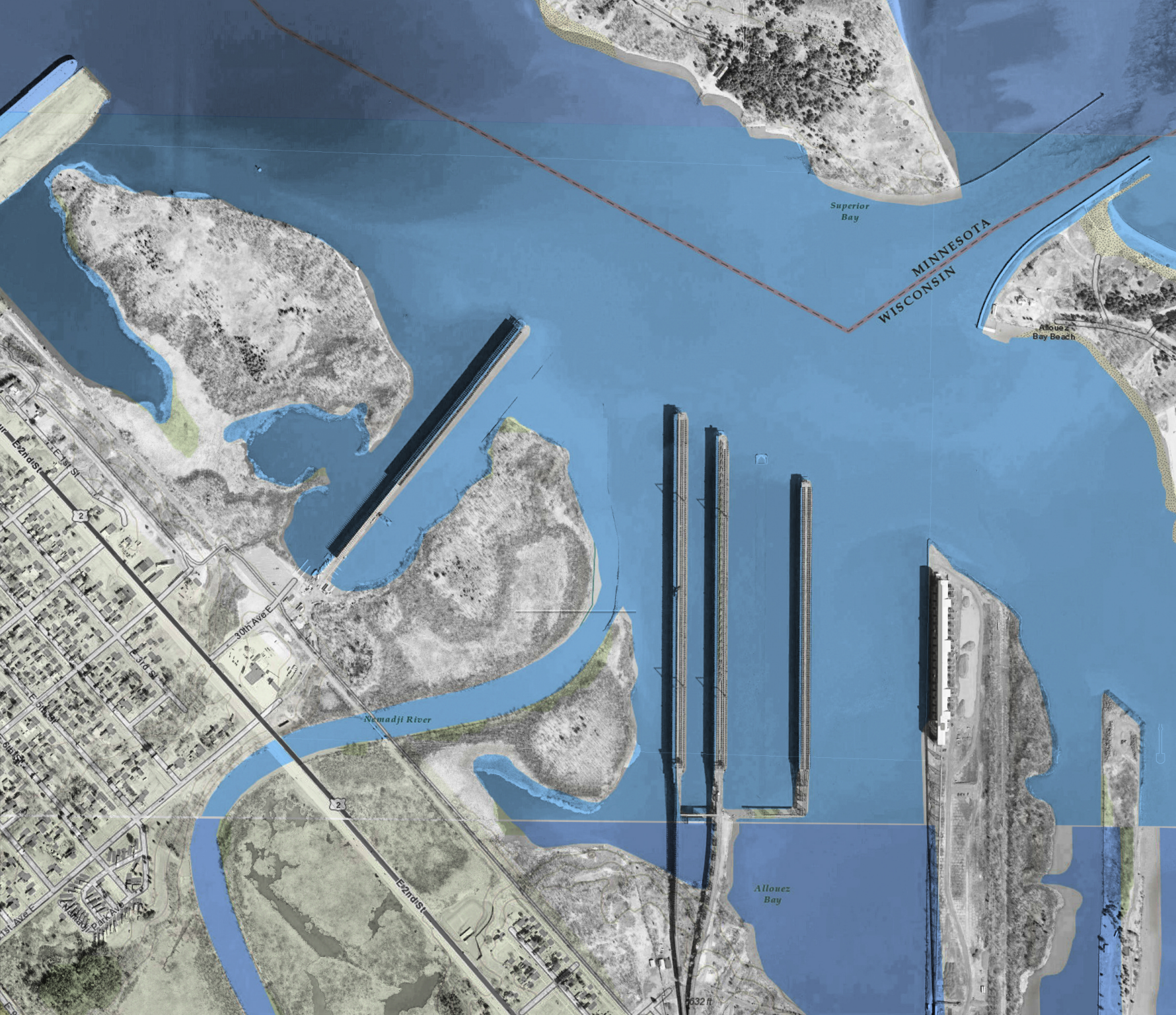


# HIGHLINE PARK NEW YORK, NEW YORK

DILLER, SCOFIDO, + RENFRO, JAMES CORNER

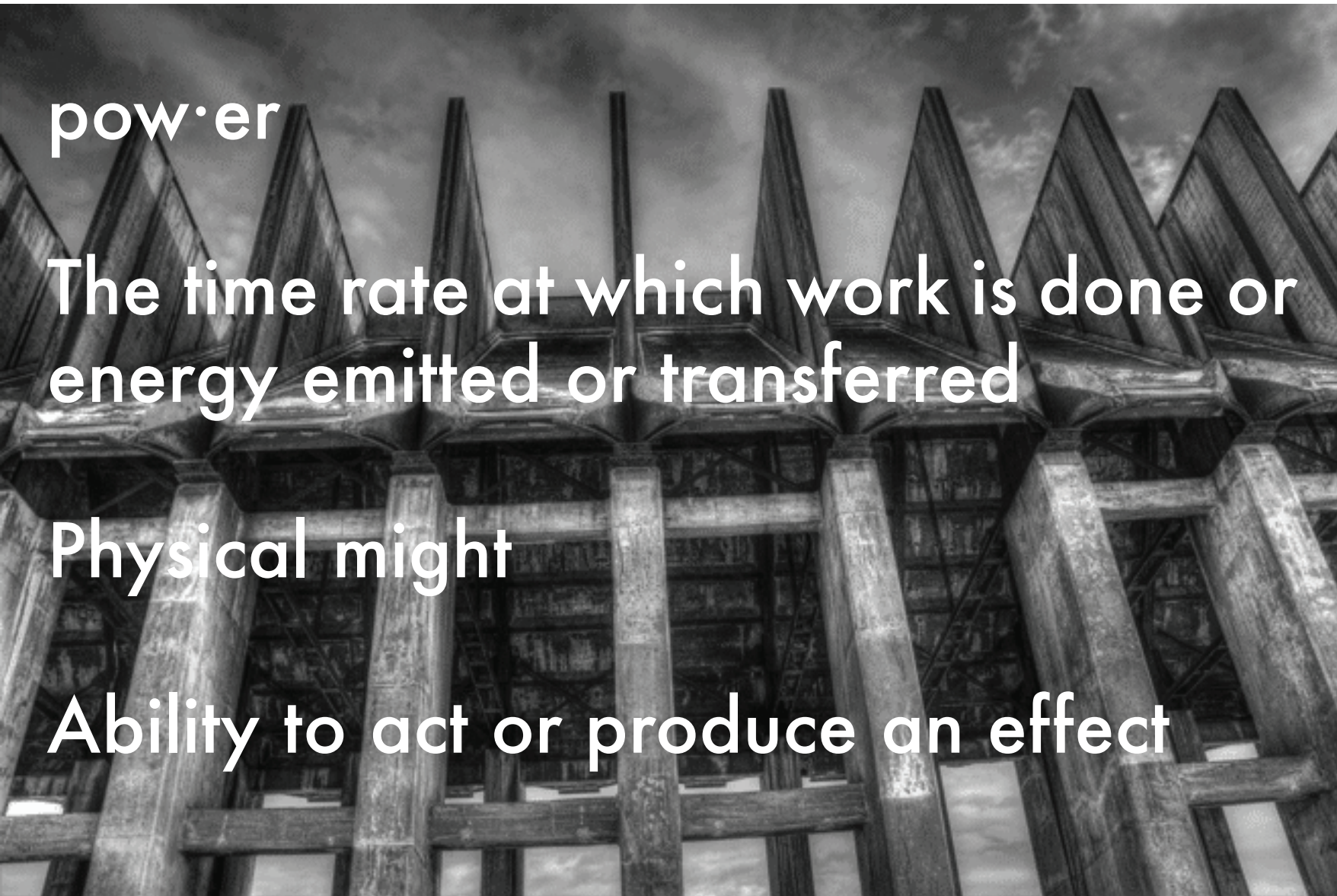






Sources: Esri, HERE, DeLorme, Intermap, increment P Corp., GEBCO, USGS, FAO, NPS, NRCAN, GeoBase, IGN, Kadaster NL, Ordnance Survey, Esri Japan, METI, Esri China (Hong Kong), swisstopo, MapmyIndia, © OpenStreetMap contributors, and the GIS User Community





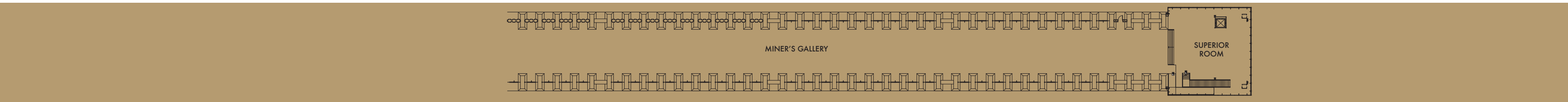
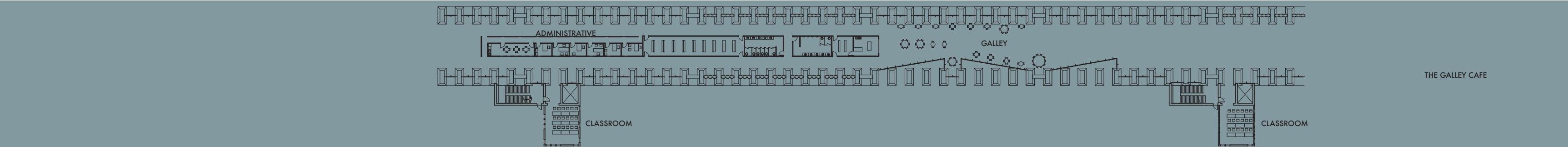
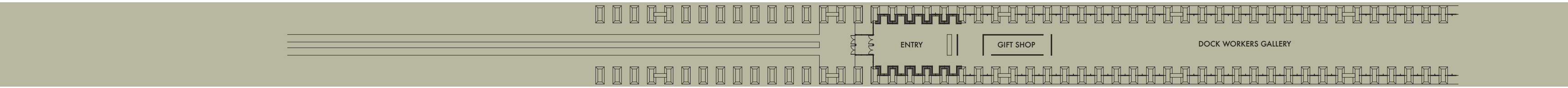
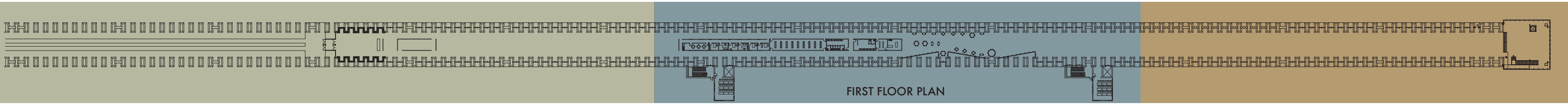
power

The time rate at which work is done or energy emitted or transferred

Physical might

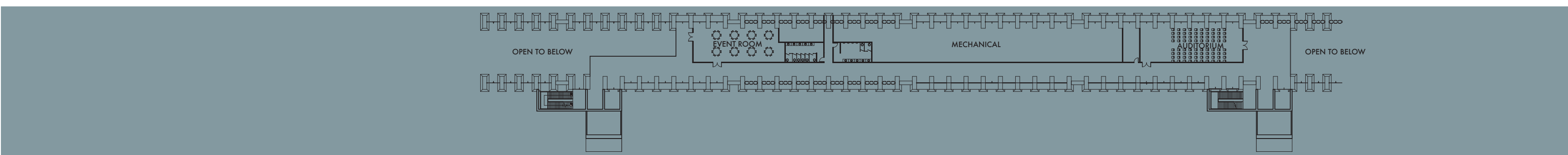
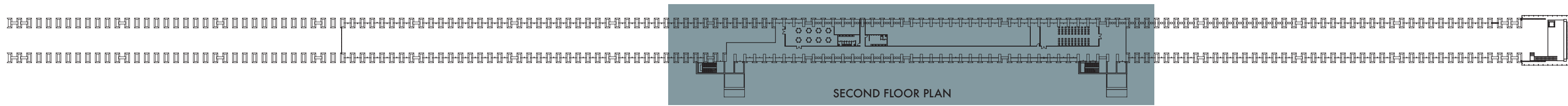
Ability to act or produce an effect





← PRONOUNCED LINEARITY →





# CATHEDRAL OF INDUSTRY

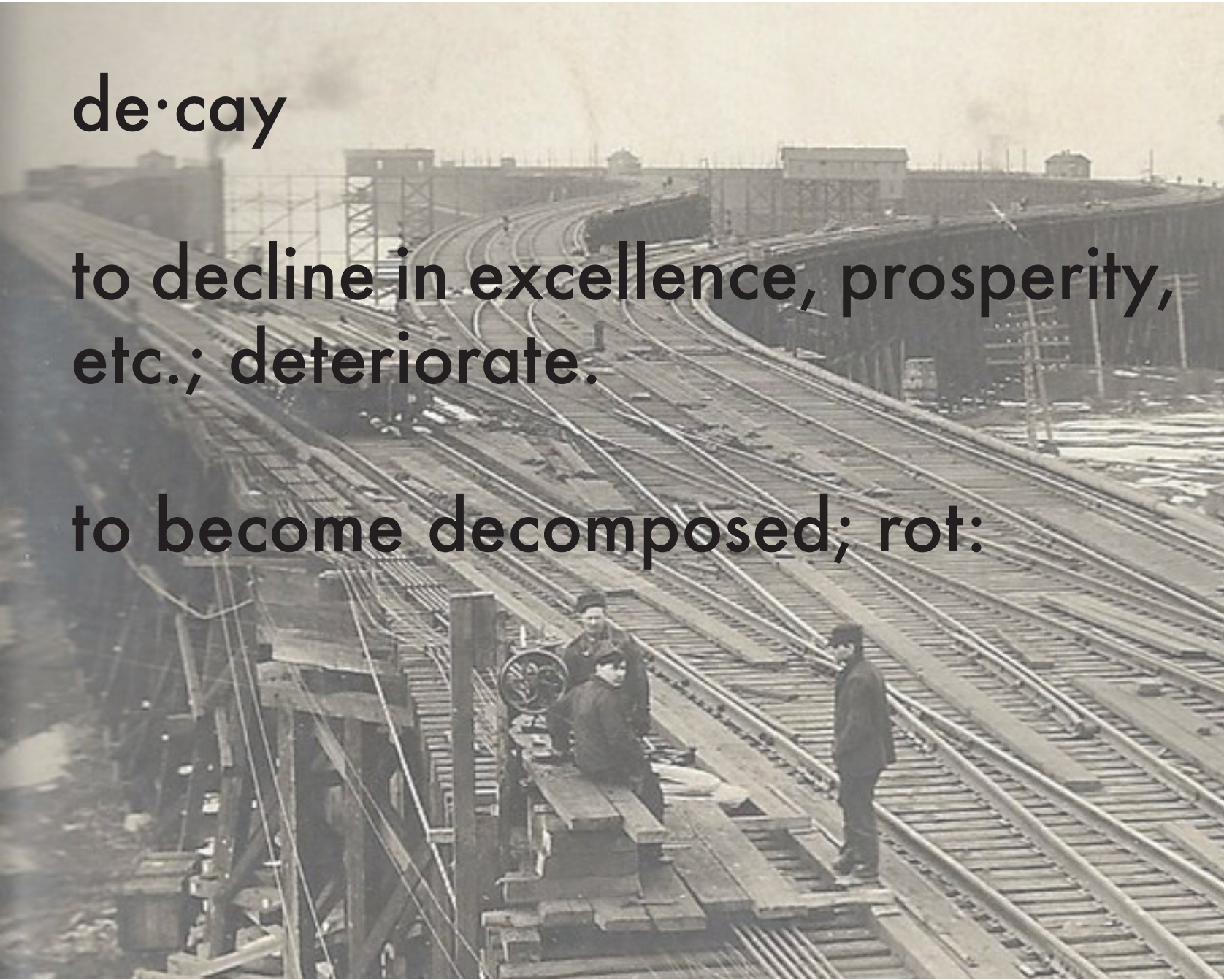




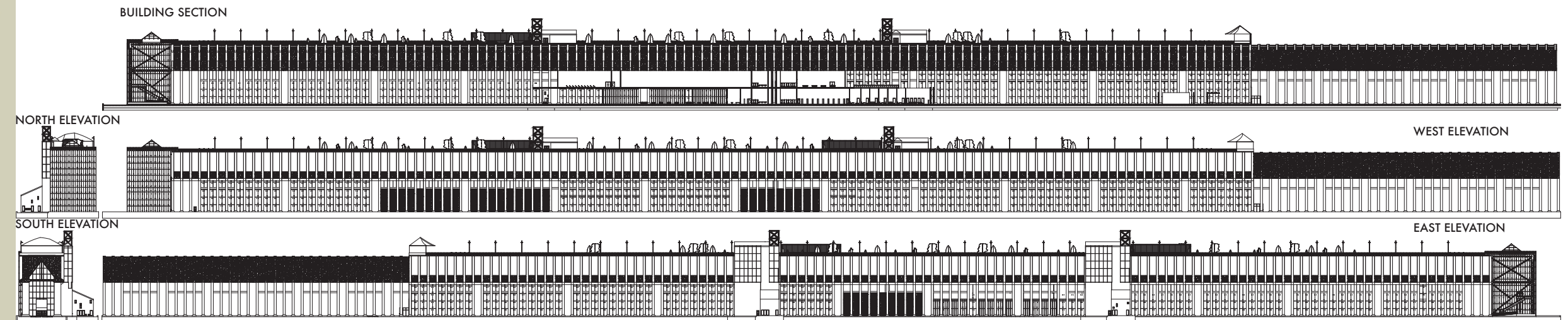
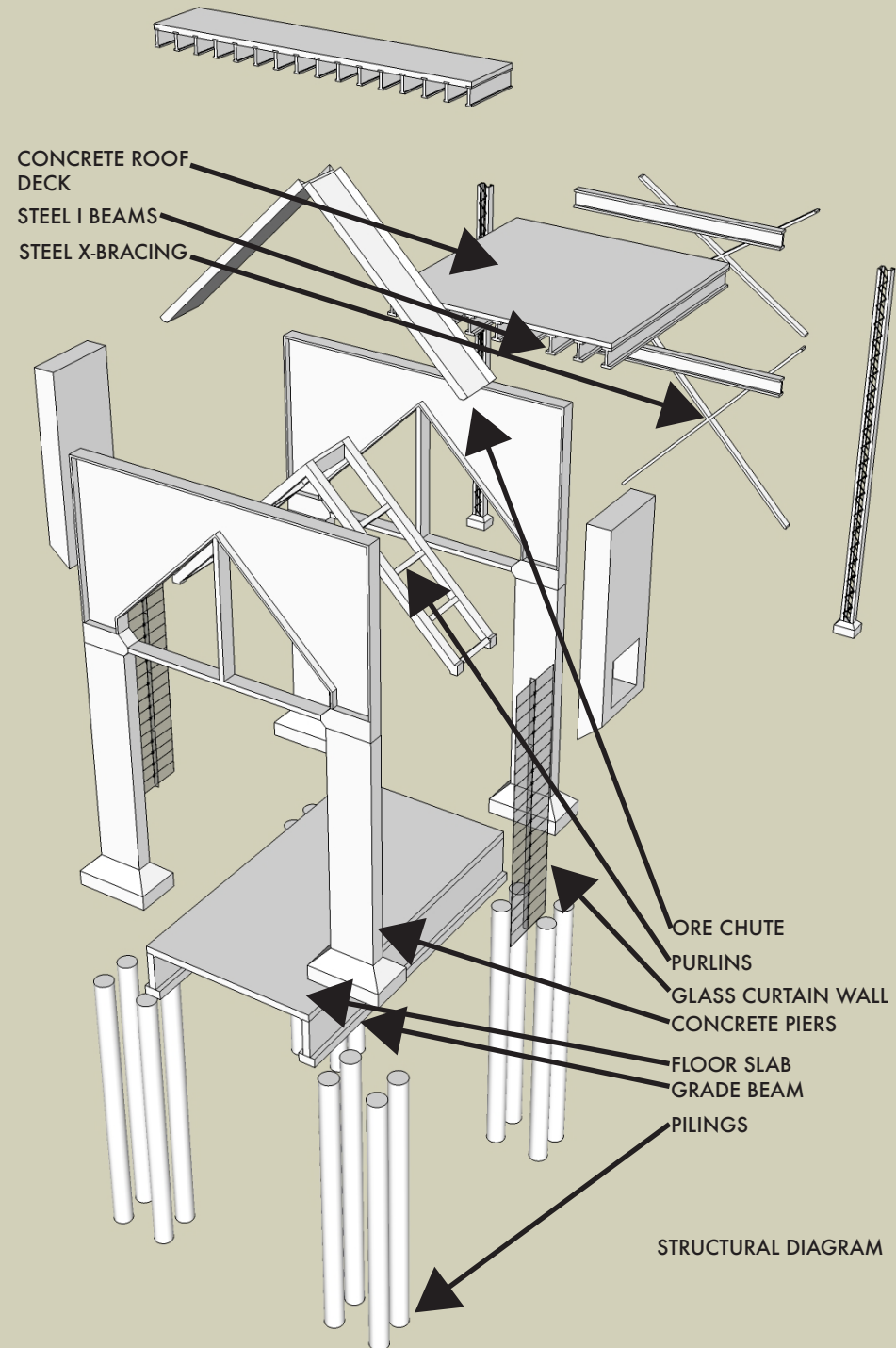
de·cay

to decline in excellence, prosperity,  
etc.; deteriorate.

to become decomposed; rot:









# MUSEUM APPROACH



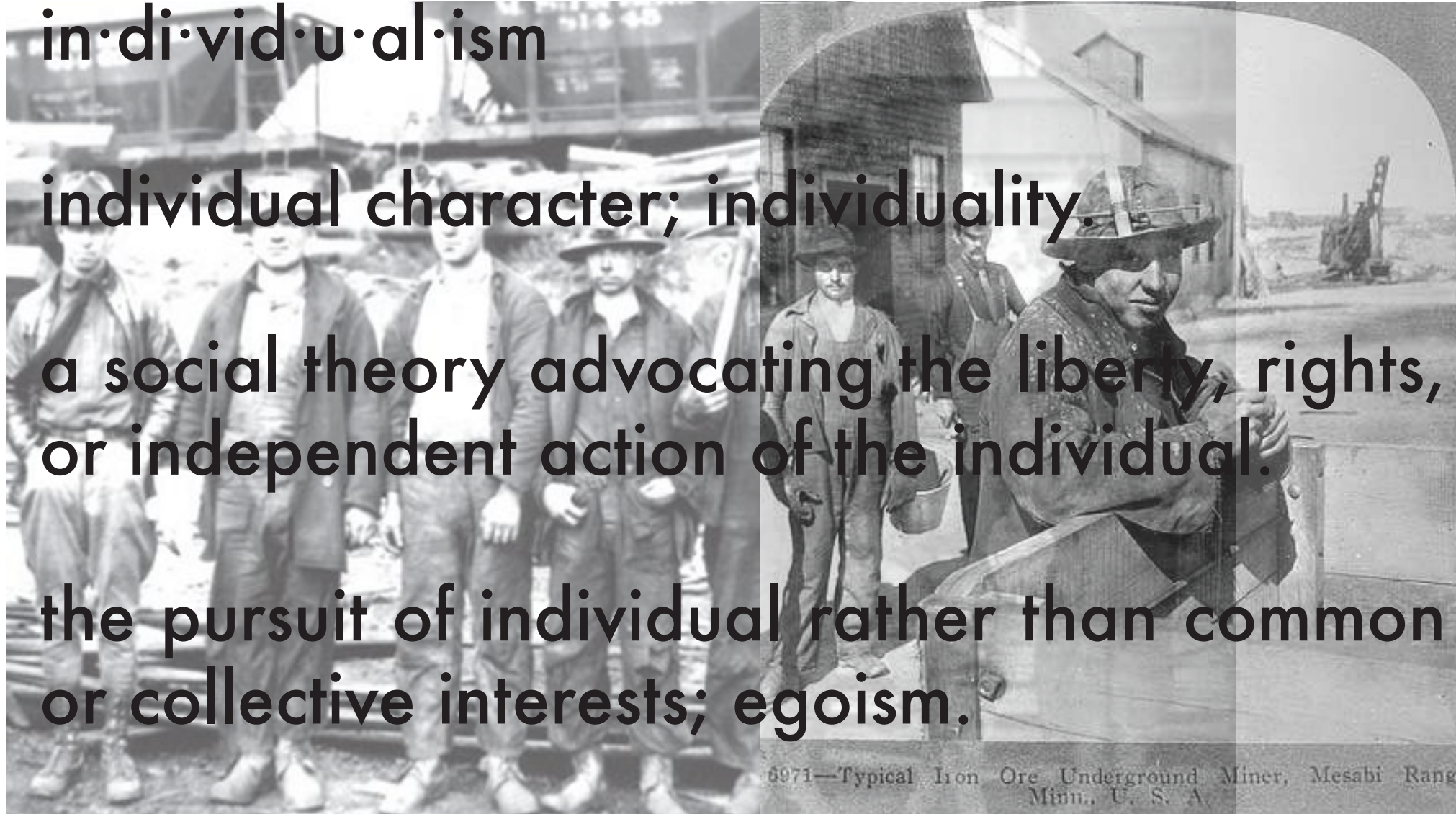


in·di·vid·u·al·ism

individual character; individuality.

a social theory advocating the liberty, rights, or independent action of the individual.

the pursuit of individual rather than common or collective interests; egoism.



6971—Typical Iron Ore Underground Miner, Mesabi Range Minn., U. S. A.







THE SUPERIOR ROOM



VIEWING DECK





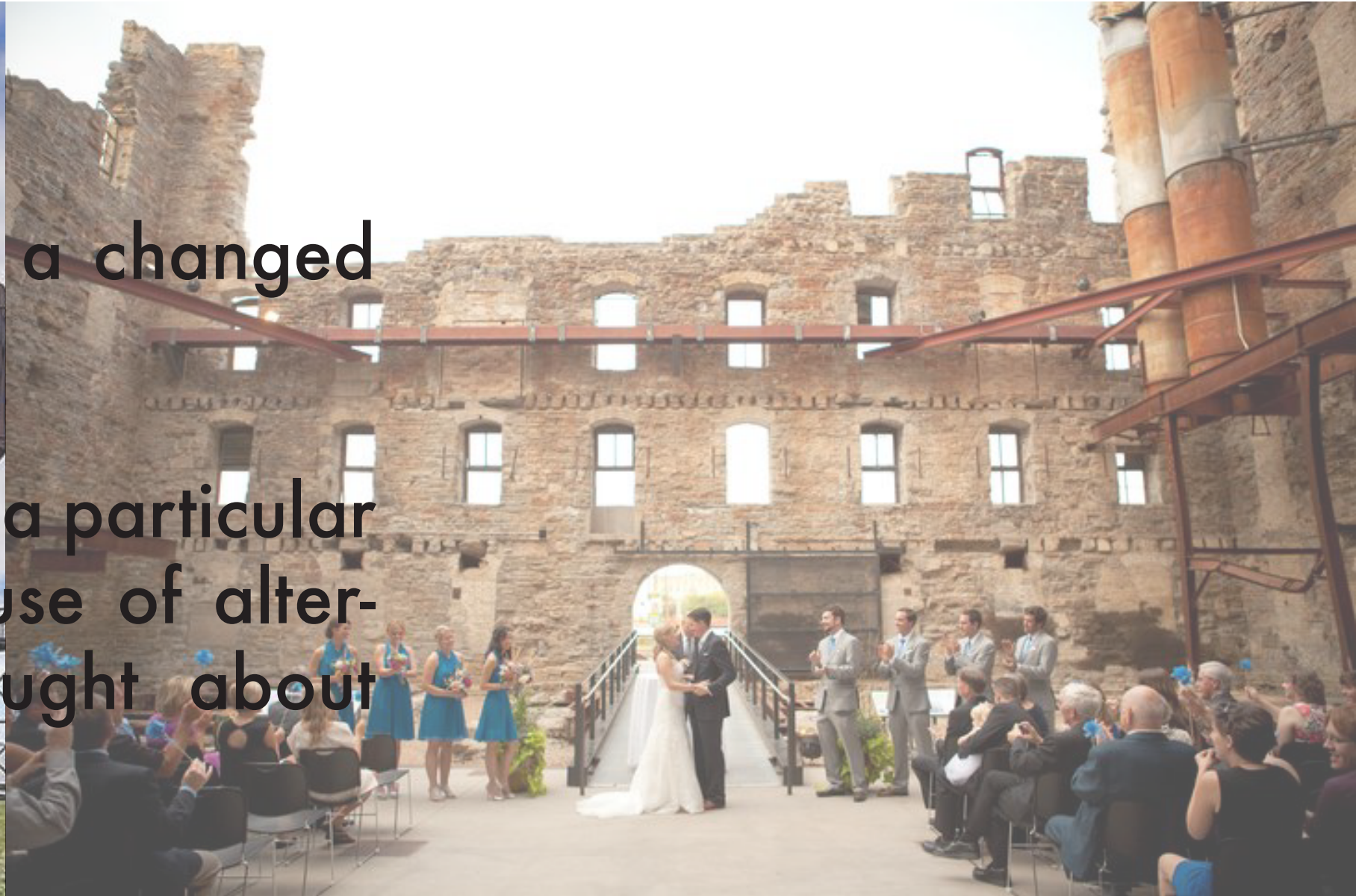
VIEW FROM SUPERIOR BAY



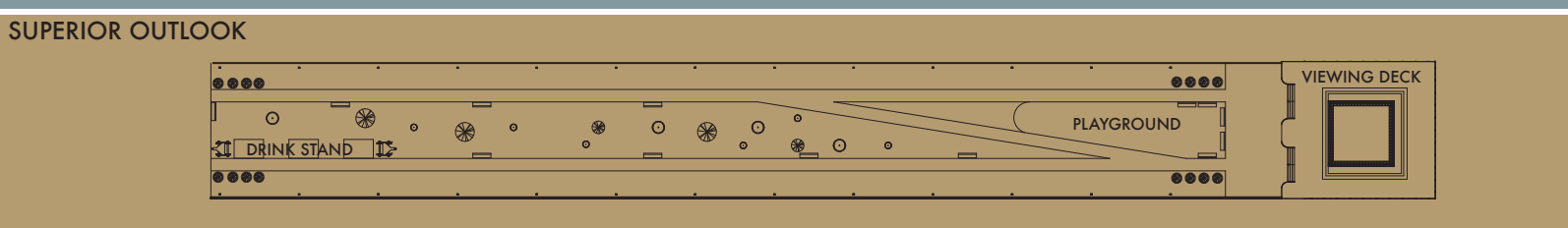
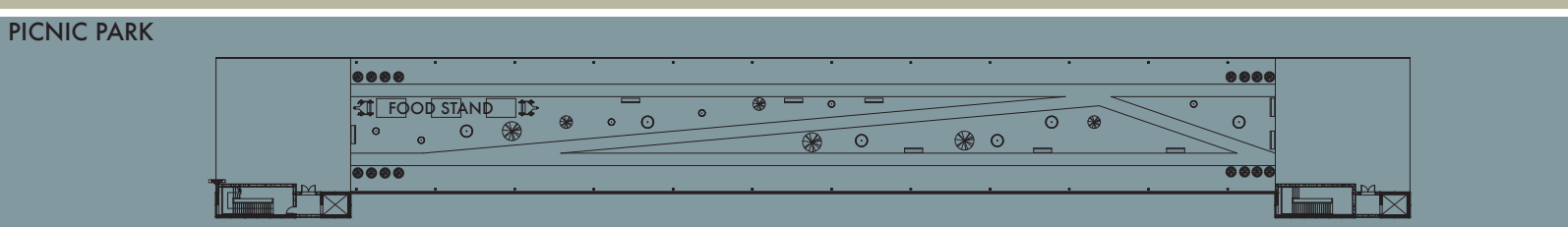
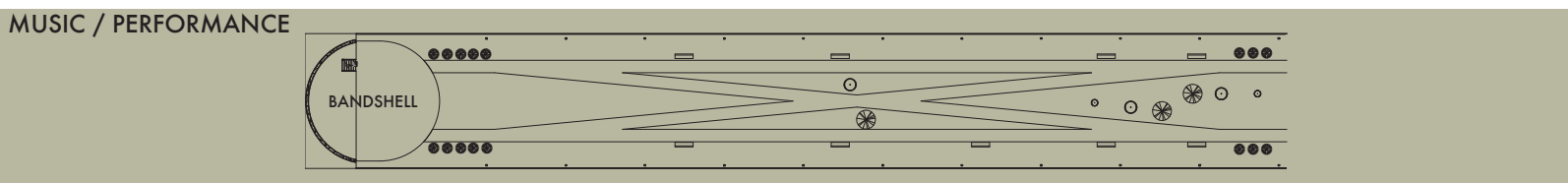
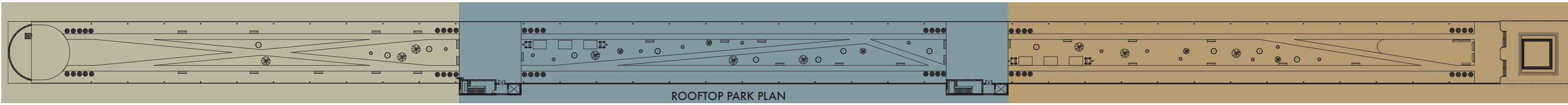
ad·ap·ta·tion

a form or structure modified to fit a changed environment.

the ability of a species to survive in a particular ecological niche, especially because of alterations of form or behavior brought about through natural selection.









# PICNIC PARK







CLASSROOM SPACE



GALLERY SPACE



**in·dus·try**

**the aggregate of manufacturing or technically productive enterprises in a particular field, often named after its principal product**

**any general business activity; commercial enterprise**







MARITIME + MINING MUSEUM

RECEPTION HALL



# THE GALLEY CAFE





CIRCULATION TOWERS



SECTION PERSPECTIVE







# re·demp·tion

SERVED THE CUYUNA ORE RANGE  
BUILT IN : 1913

LENGTHENED IN : 1917 + 1925

DECOMMISSIONED IN : 1970

RECOMMISSIONED IN : 2016





Special Thanks To:

Steve Martens

Jeff Lemke

Steve Martz

My Family

Dedicated To:

My Grandfather

Robert Everson

Gas Workers Local 340