

COLLECTING VARIED ENERGIES WITHIN A
DISCONNECTED COMMUNITY


Megan Oakes



WHAT MAKES A CITY **INTERESTING**?

WHY DO YOU LIKE A CITY?

WHAT IS THE CITY **MISSING/LACKING**?



THE MISSISSIPPI RIVER HAS SHAPED MANY CITIES AND HAS PROVIDED MANY GOOD THINGS, BUT IT HAS ALSO BROUGHT MANY ISSUES. THERE IS A TREMENDOUS AMOUNT OF HISTORY THAT LIES IN THE ROOTS OF THE MISSISSIPPI AND THE CITIES THAT ARE STATIONED AROUND IT. MANY COMMUNITIES LIVE THEIR EVERYDAY LIVES NOT KNOWING THE HISTORICAL ASPECTS OF THEIR HOMETOWNS.

NATURE HAS AN EVER-CHANGING PATTERN, RICH COMPLEXITY, AND VARIOUS FORMS THAT APPEAL TO THE DEEPEST ASPECTS OF HUMAN CONSCIOUSNESS. WHAT WAS ONCE A DAILY CENTERPEICE OF DAILY LIFE HAS NOW SHIFTED INTO THE SUBCONSCIOUSNESS AND IS OFTEN TAKEN FOR GRANTED. IT HAS BEEN UNDERSTOOD THAT IMMERSION IN NATURE BRINGS PEACE AND HAPPINESS TO THE HUMAN MIND.

BEING EDUCATED AND REMINDED OF THE IMPORTANCE OF A MAJOR FRESH WATER RESOURCE IN THE UNITED STATES IS SOMETHING THAT WOULD IMPROVE THE PROTECTION OF THE MISSISSIPPI RIVER AND THE NATURE AND WILDLIFE THAT SURROUNDS IT.

NATURE HAS A WAY OF PLEASING OUR EMOTIONAL SENSE OF AWE AND AMAZEMENT. ARCHITECTURAL MOVEMENTS HAVE OPPORTUNITIES OF PROVIDING OPENINGS TO NATURE IN EVERYDAY LIVES, WETHER ITS IN THE COUNTRY OR IN THE CITY- AT HOME, IN THE WORKPLACE, OR IN SCHOOLS AND NEIGHBORHOODS.

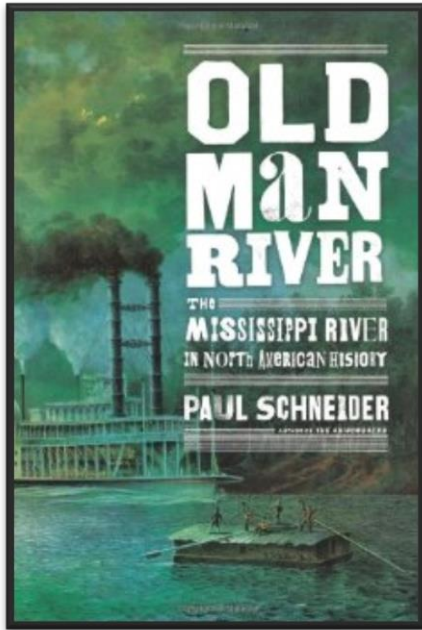
PROTECTING OUR ENVIRONMENT IS BECOMING MORE AND MORE CRUTIAL AS EACH DAY PASSES, AND IT IS IMPORTANT TO FIND WAYS TO LET NATURE BALANCE OUR LIVES. THE MOST SUCESSFUL FORM OF PROTECTION IS TO INFORM AND EDUCATE COMMUNITIES ABOUT THIS DISCONNECTION. ARCHITECTS AND SEVERAL TYPES OF SCIENTISTS HAVE SEEN THIS GAP AND ARE NOW TYRING TO REINFORCE THIS CONNECTION FOR OUR OWN PROTECTION. ARCHITECTURAL SPACES CAN PROVIDE FOR EDUCATING COMMUNITIES ABOUT THE PAST, PRESENT, AND FUTURE OF NATURE THAT SURROUNDS US.

THE BEGINNING.



[FILL THE VOID WITHIN THE COMMUNITY OF HASTINGS TO
MAKE IT A GREATER AND MORE SUCCESSFUL RIVER TOWN]

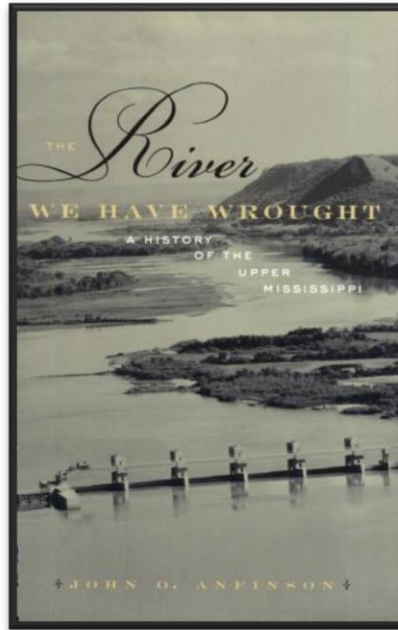
THE BEGINNING.



OLD MAN RIVER- THE MISSISSIPPI RIVER IN NORTH AMERICAN HISTORY. PAUL SCHNIEDER.

Paul Schnieder has taken a journey along the Mississippi River encompassing several aspects including prehistory to the engineered source of the River.

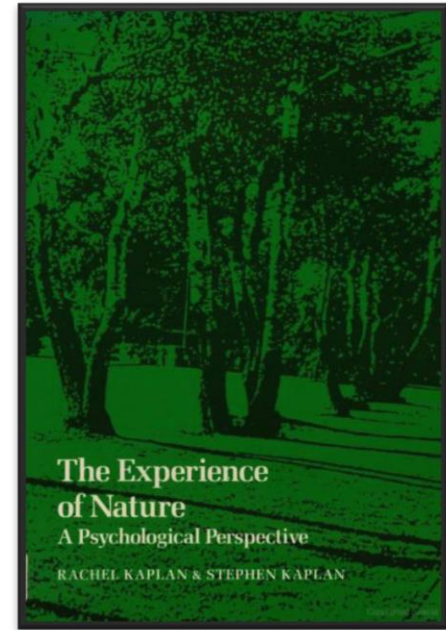
How it has affected various people including: loggers, slaves, hunters, archaeologists.



THE RIVER WE HAVE WROUGHT. A HISTORY OF THE UPPER MISSISSIPPI. JOHN ANFINSON.

Describes the discovery of the Mississippi River and that it was the main source of transportation. The Upper Mississippi was described as "an enterprise of the boldest, most extraordinary nature".

Rich history and amount of time spent on this bold piece of landscape.



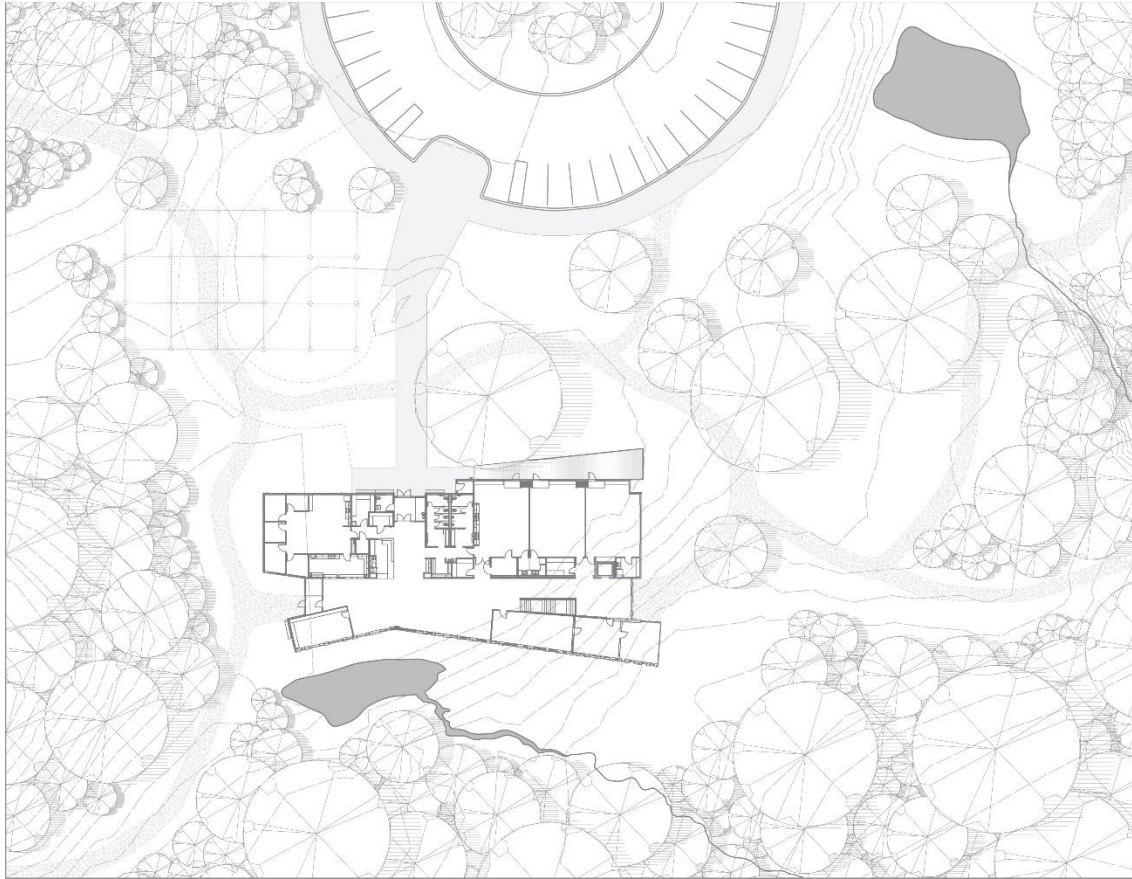
THE EXPERIENCE OF NATURE. A PSYCHOLOGICAL PERSPECTIVE. RACHEL KAPLAN & STEPHEN KAPLAN.

Relationship between people and the environment that surrounds them is valuable piece of life. Nature provides spirit to humans that are different for each individual, and to embrace that spirit allows for good health and well-being.

Solutions to experience with the environment

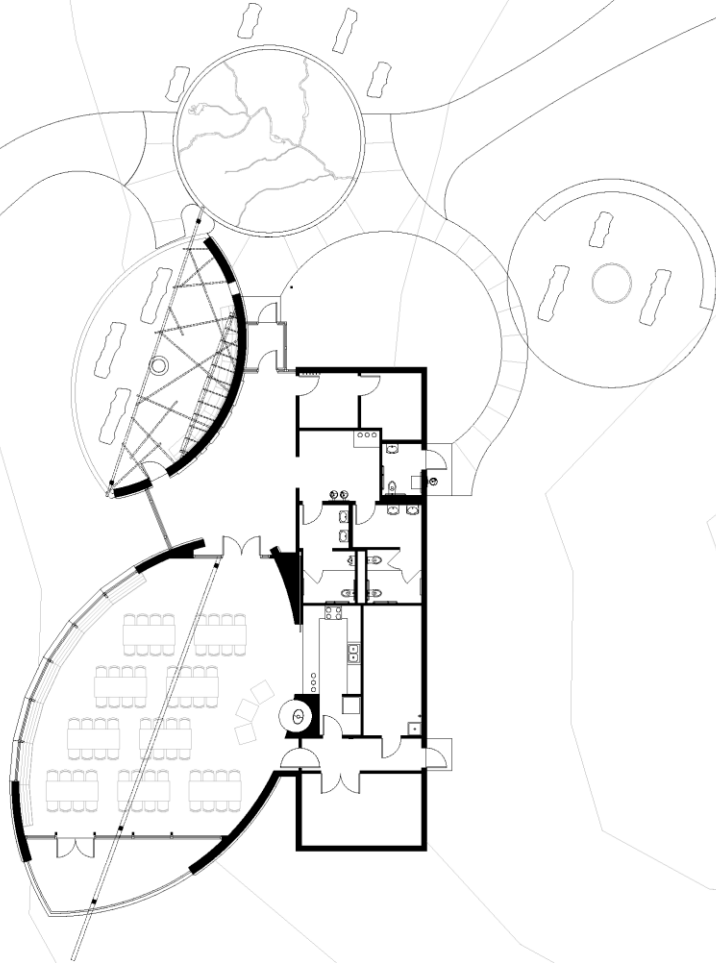
INSPIRE.

HOLLISTIC EXPERIENCE. OPERABLE WINDOWS (SENSES). WATER COLLECTION (WILDLIFE ATTRACTION).



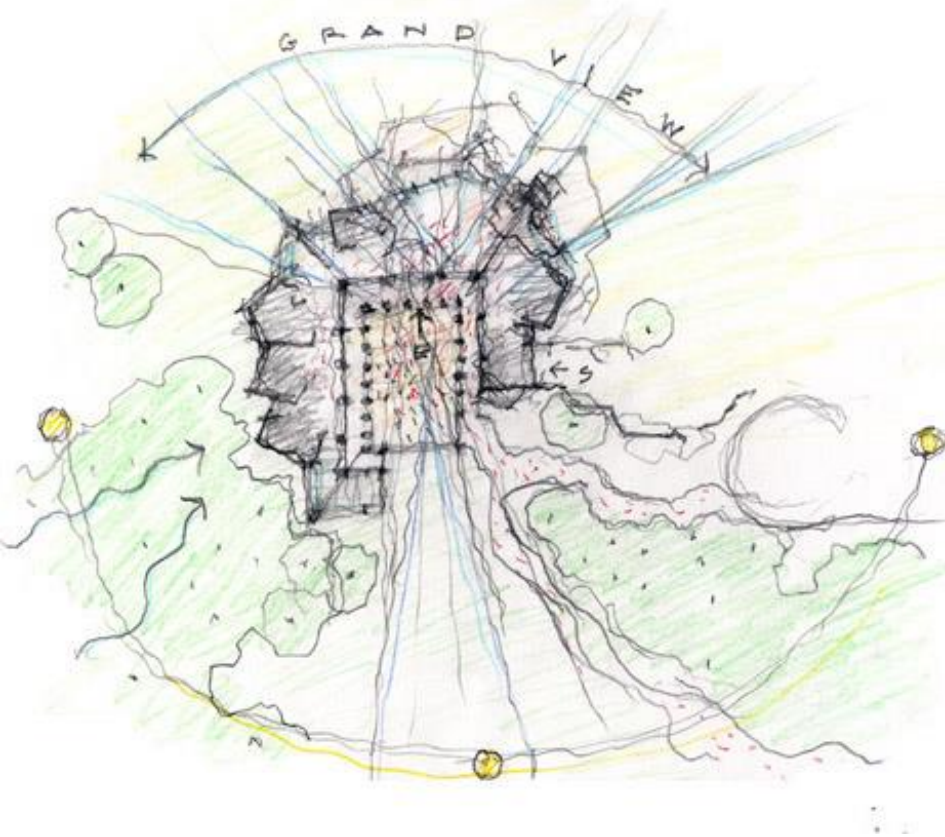
INSPIRE. Eastman Nature Center. Dayton, Minnesota.

SITE EXPERIENCE. ELEGANT/SIMPLE.



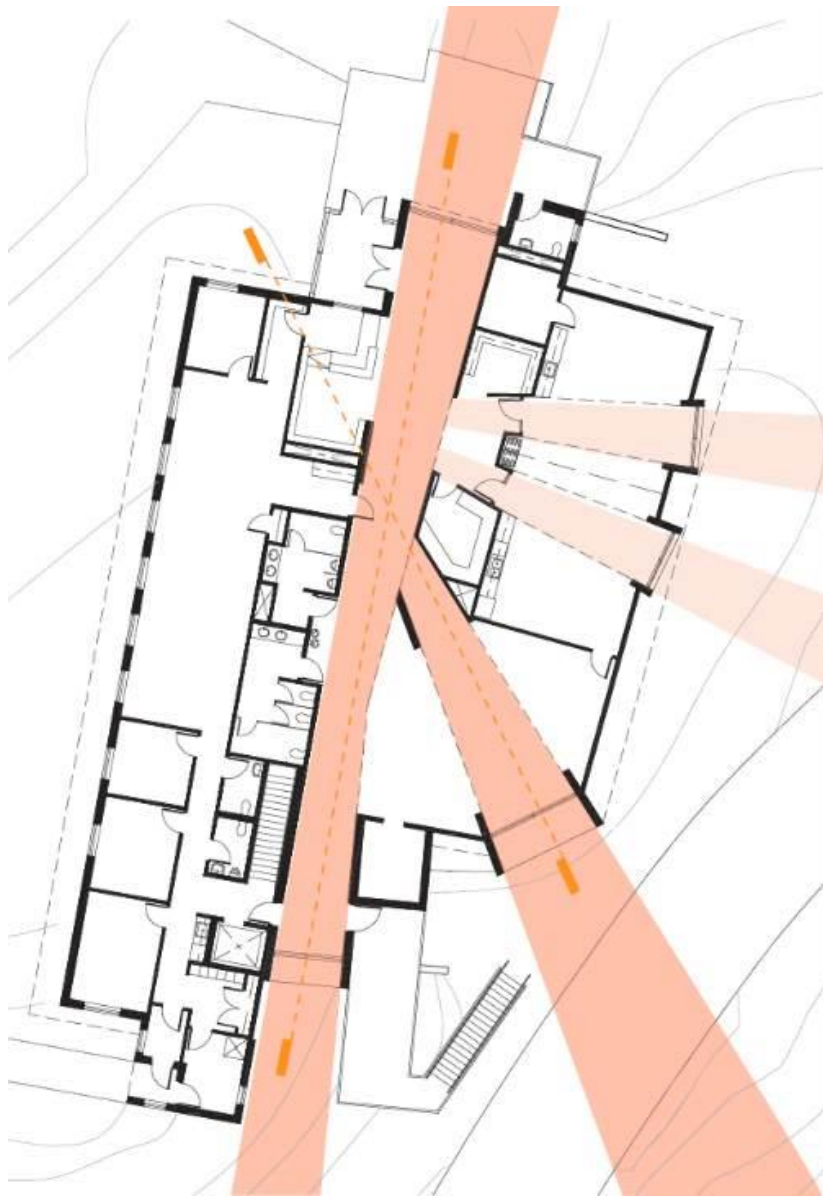
INSPIRE. Schaar's Bluff Gathering Center. Hastings, Minnesota.

WINDOWS EMPHASIZED. LARGE OPEN GATHERING SPACE.

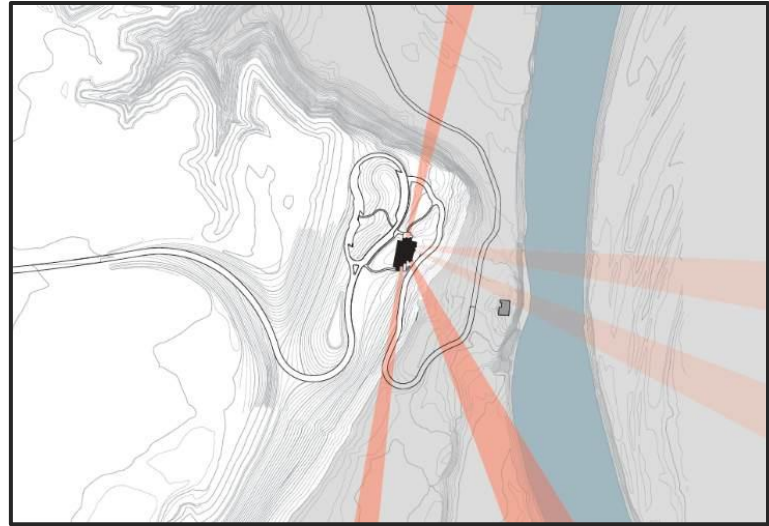


INSPIRE.

Grand Teton Discovery and Visitor Center. Moose, Wyoming.

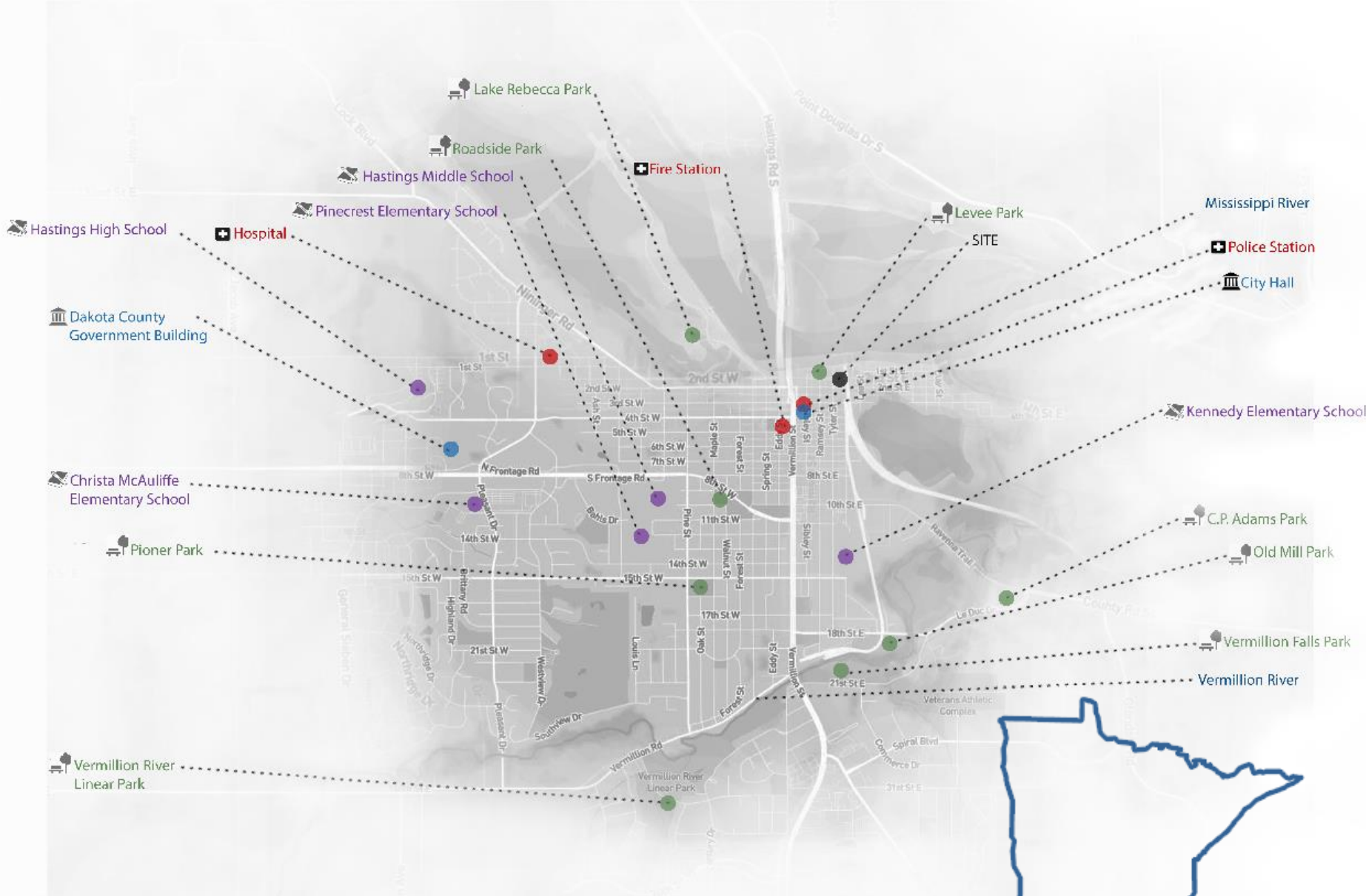


FRAMED WINDOWS. SLIGHT ANGLES (DIRECTION OF EMPAHSIS)



INSPIRE.

Minnesota Valley Wildlife Refuge Visitor Center. Carver, Minnesota



INTEGRATE.

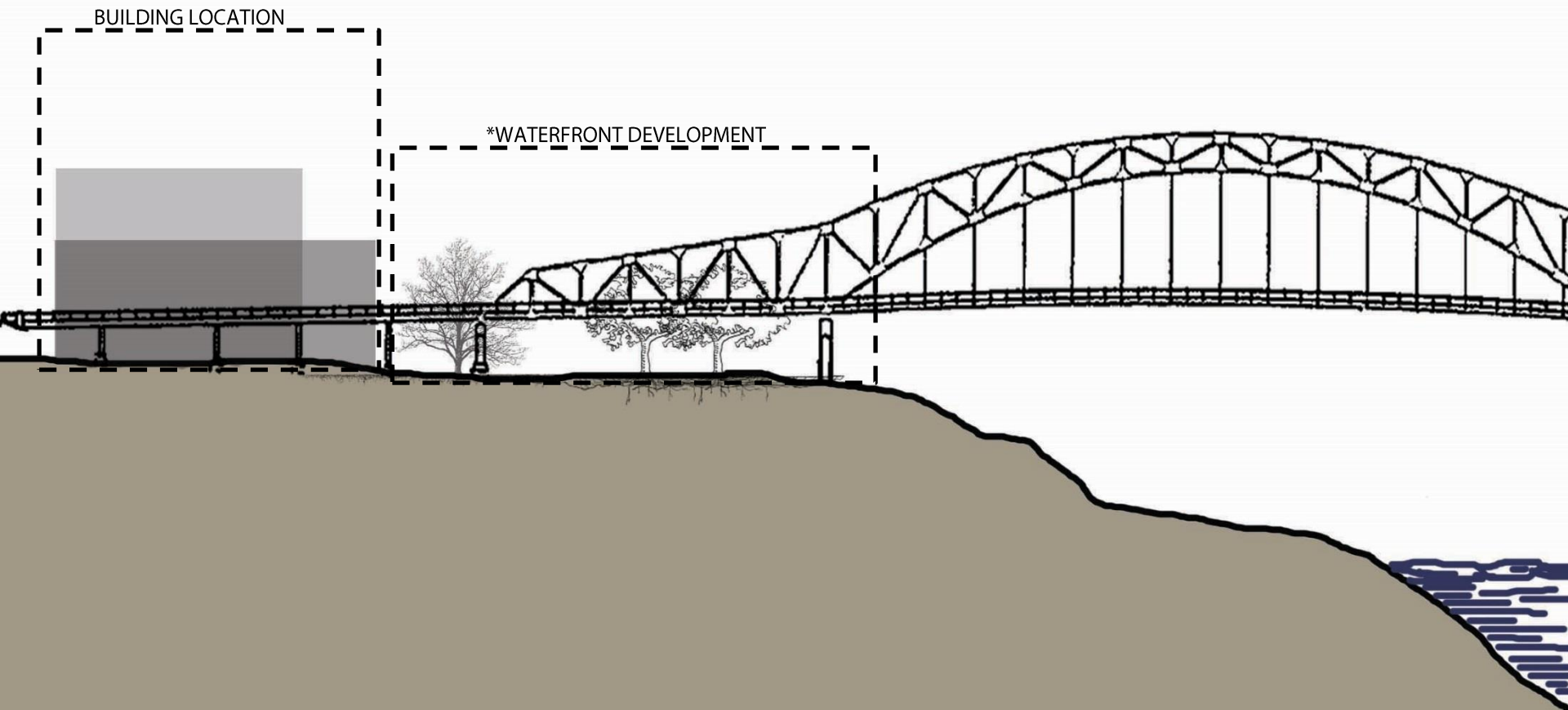
[fill the void within a community to make a stronger relationship]





MOVEMENT

[connect to the Mississippi River to have greater potential of a 'river town']



MOVEMENT. [connect to the Mississippi River to have greater potential of a 'river town']



MOVEMENT. [connect to the Mississippi River to have greater potential of a 'river town']

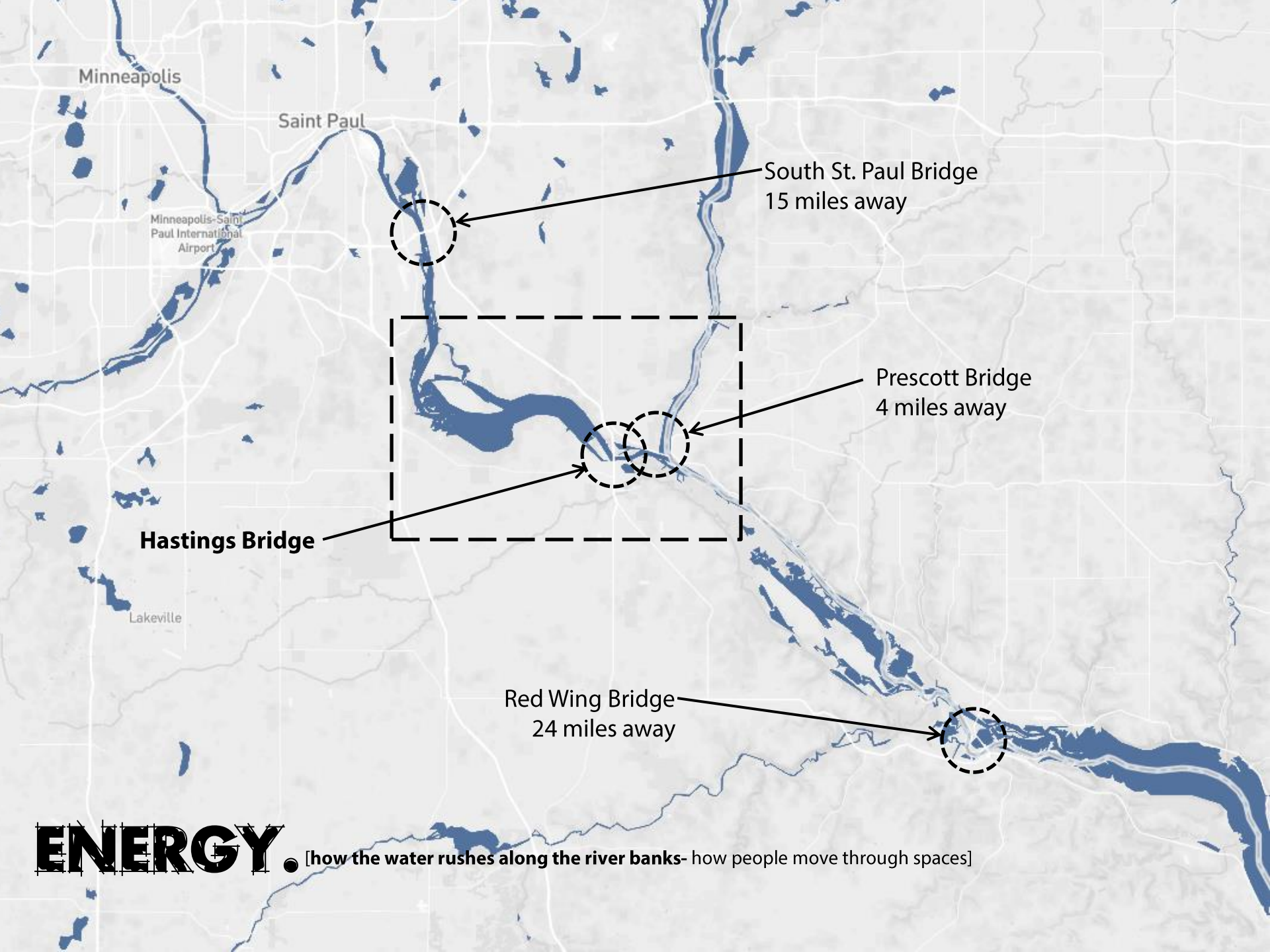


MOVEMENT. [connect to the Mississippi River to have greater potential of a 'river town']



MOVEMENT.

[connect to the Mississippi River to have greater potential of a 'river town']



Minneapolis

Saint Paul

Minneapolis-Saint Paul International Airport

South St. Paul Bridge
15 miles away

Prescott Bridge
4 miles away

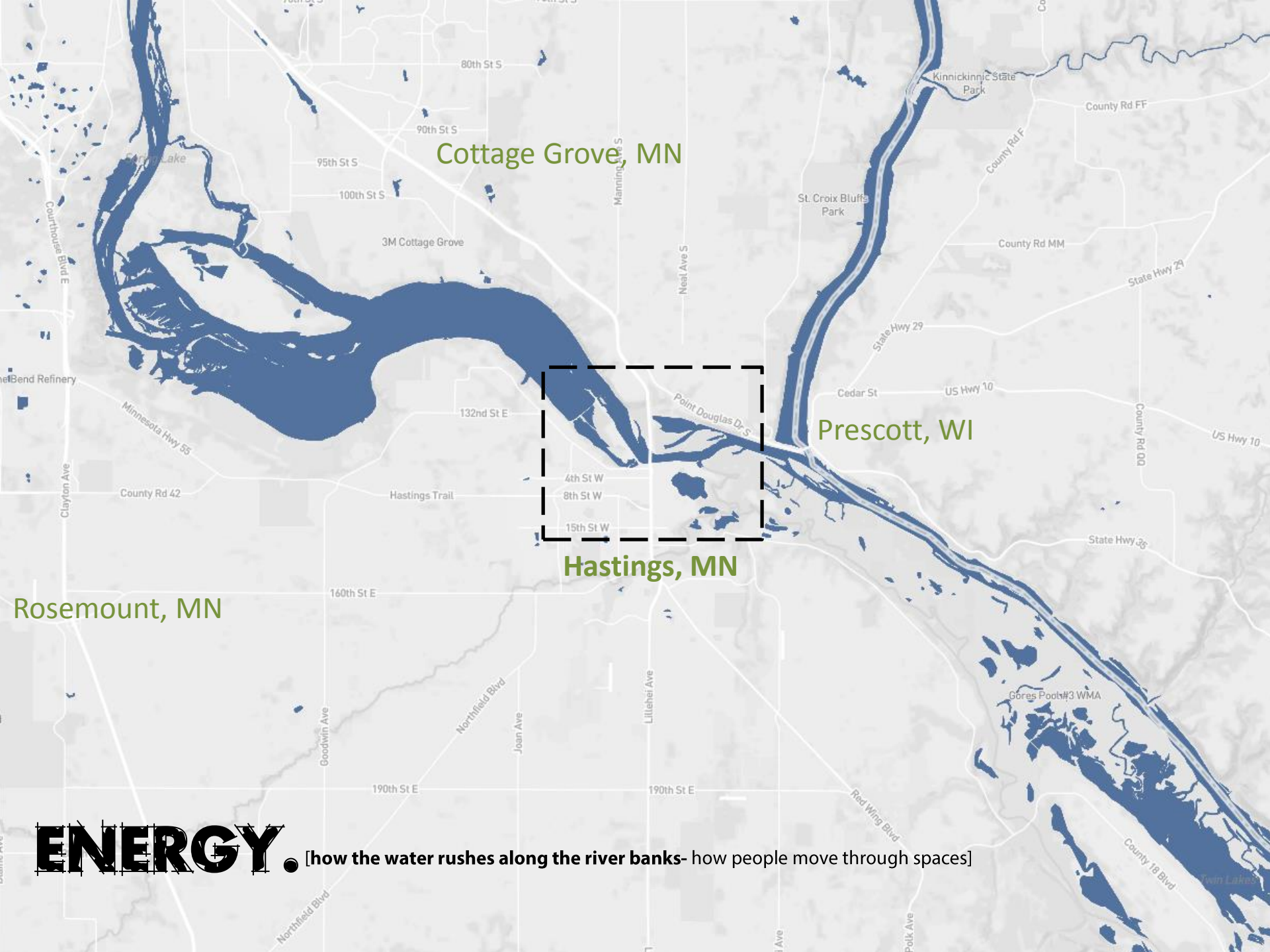
Hastings Bridge

Lakeville

Red Wing Bridge
24 miles away

ENERGY.

[how the water rushes along the river banks- how people move through spaces]



Cottage Grove, MN

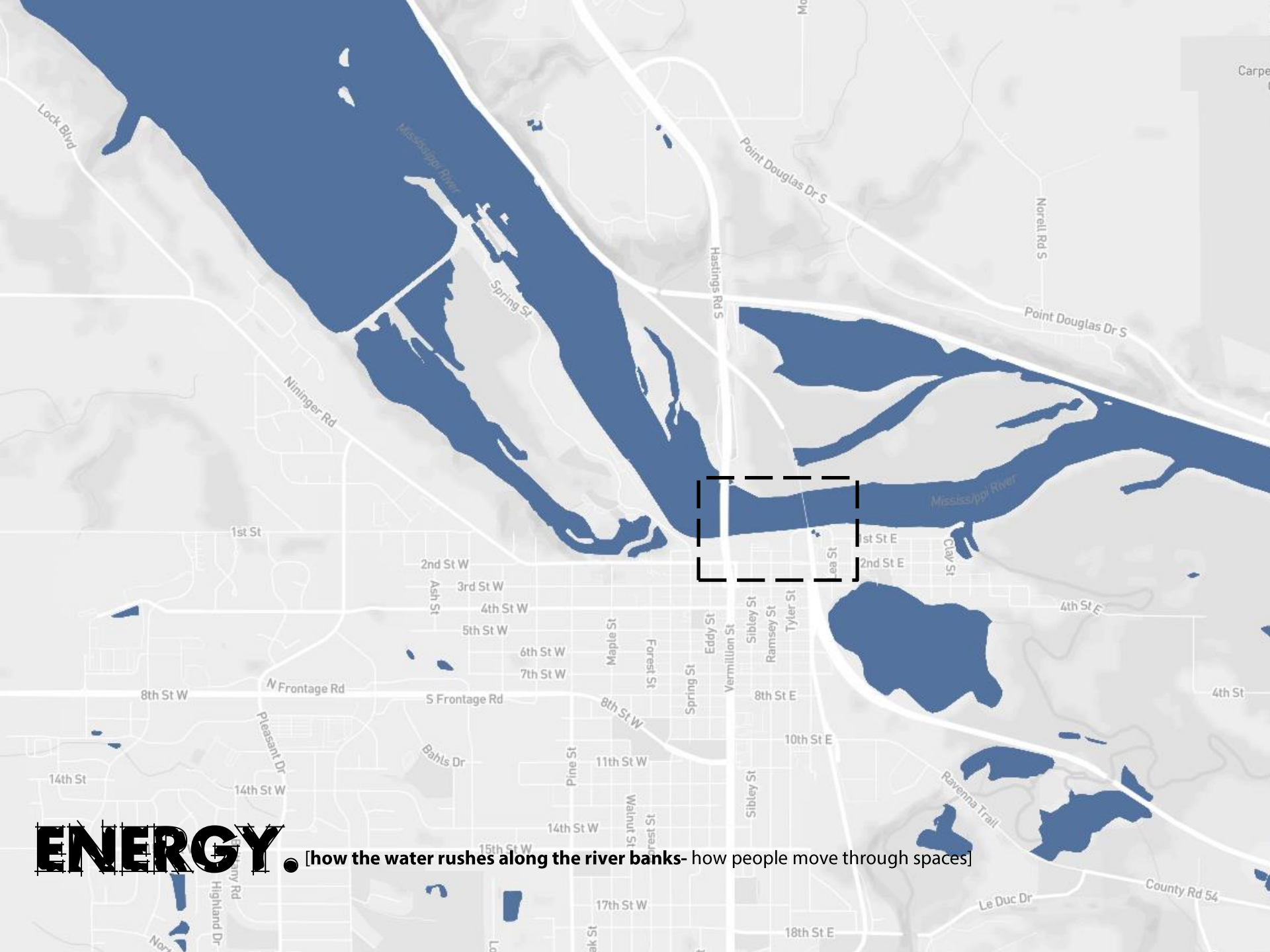
Prescott, WI

Hastings, MN

Rosemount, MN

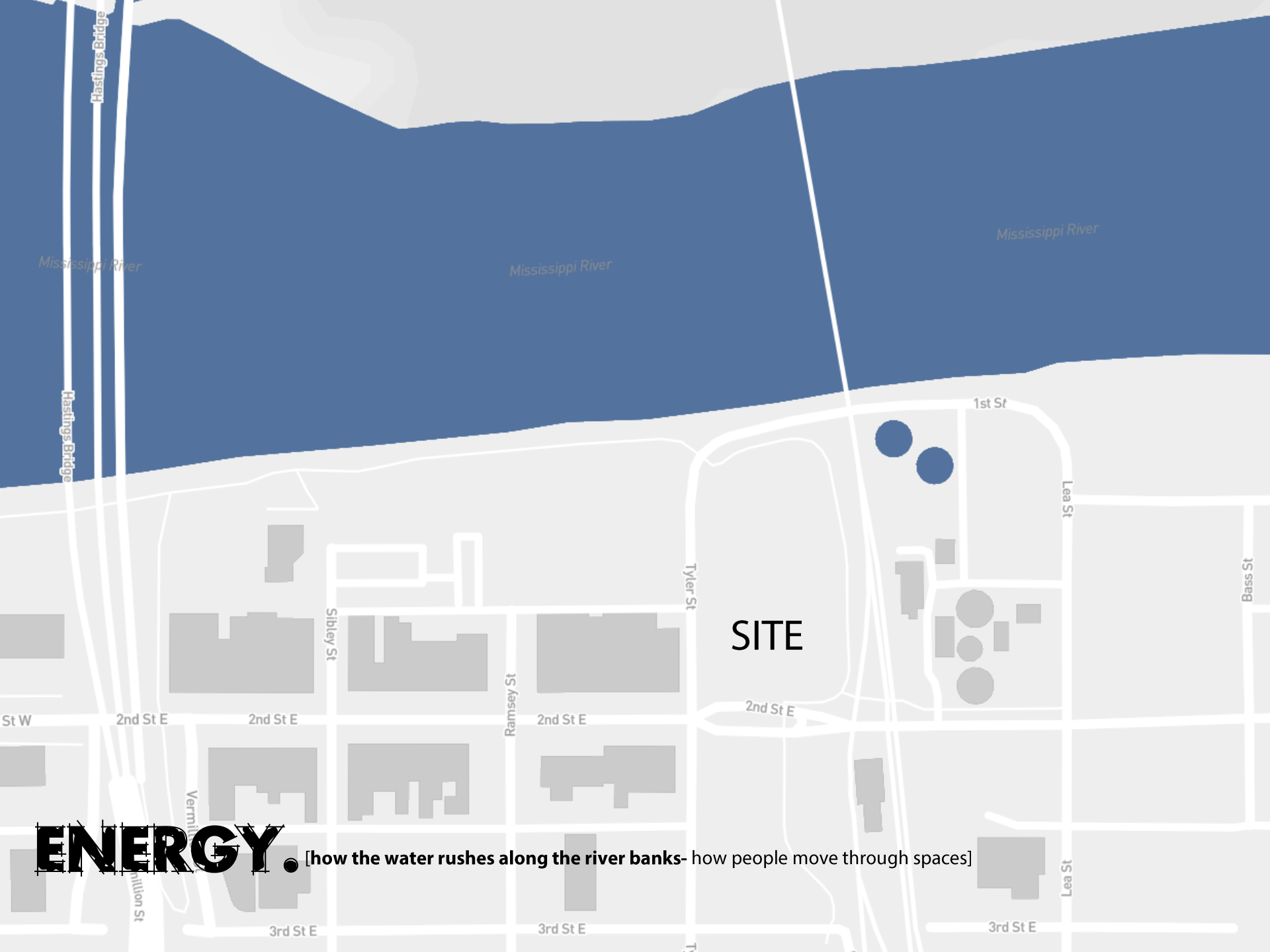
ENERGY

[how the water rushes along the river banks- how people move through spaces]



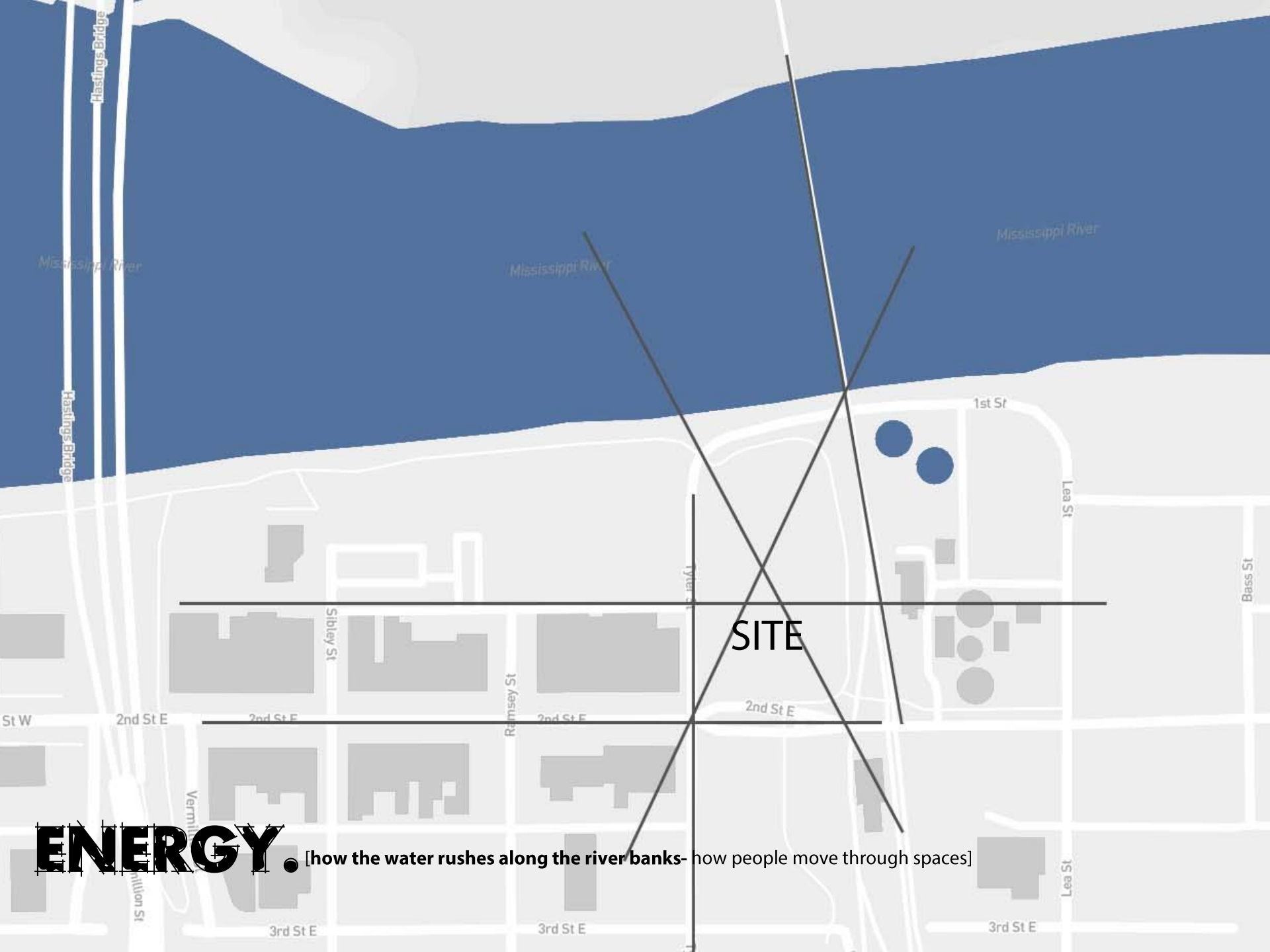
ENERGY

[how the water rushes along the river banks- how people move through spaces]



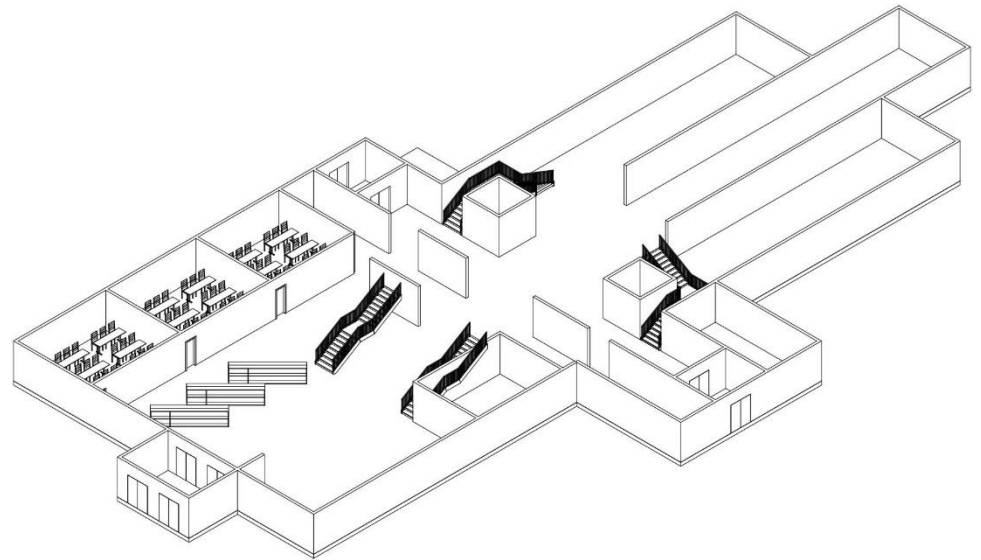
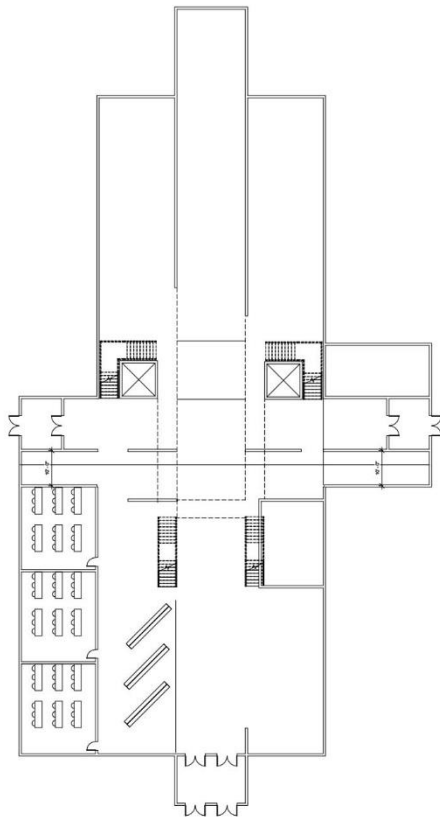
ENERGY

[how the water rushes along the river banks- how people move through spaces]



ENERGY.

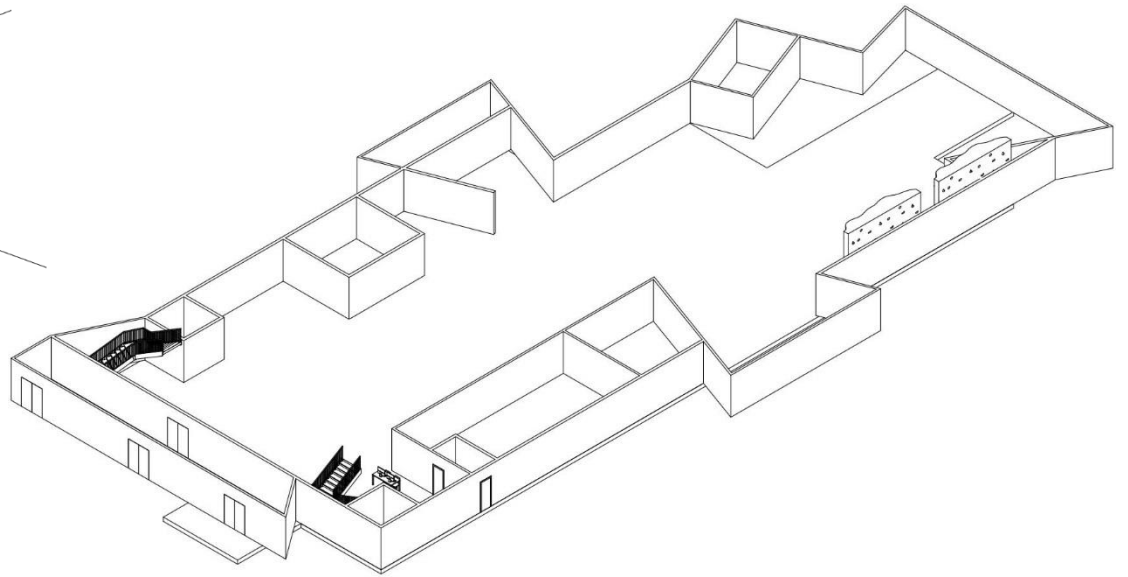
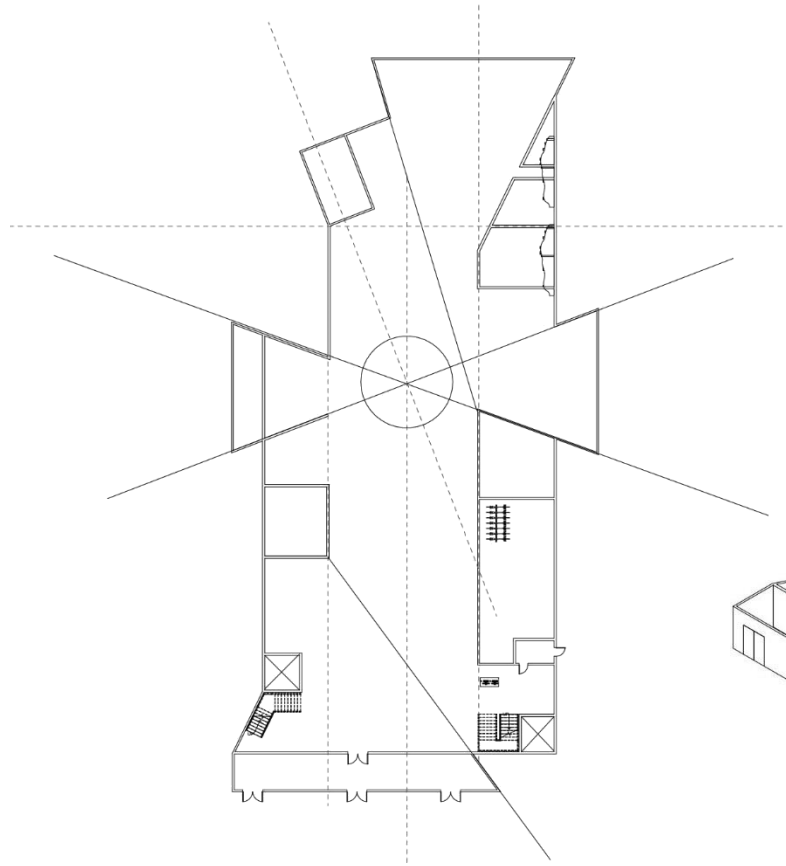
[how the water rushes along the river banks-how people move through spaces]



Design Process 1

ENERGY

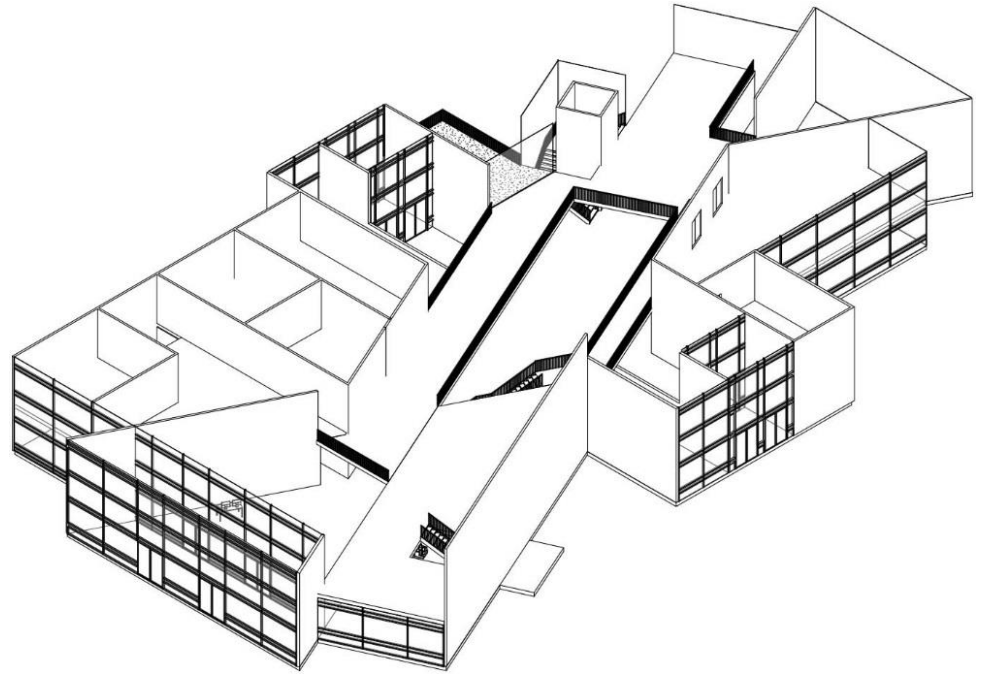
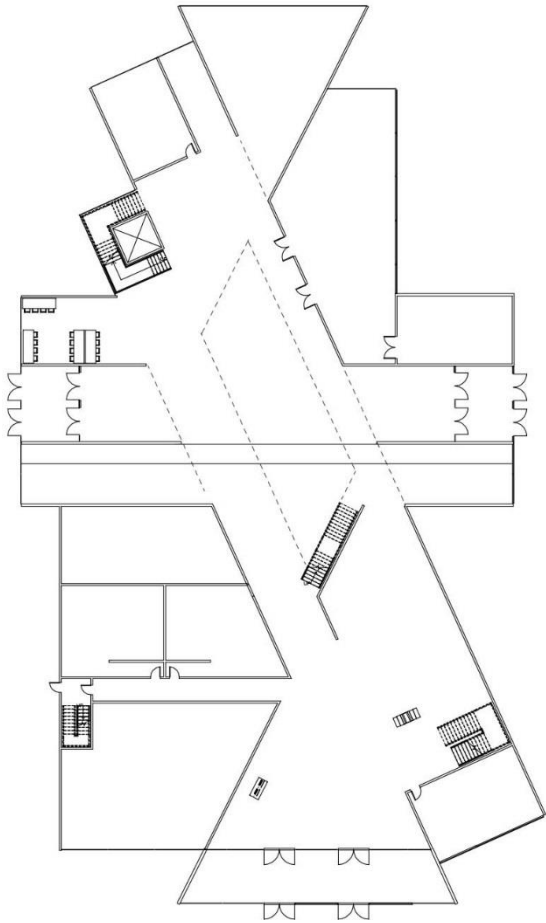
● [how the water rushes along the river banks- **how people move through spaces**]



Design Process 2

ENERGY

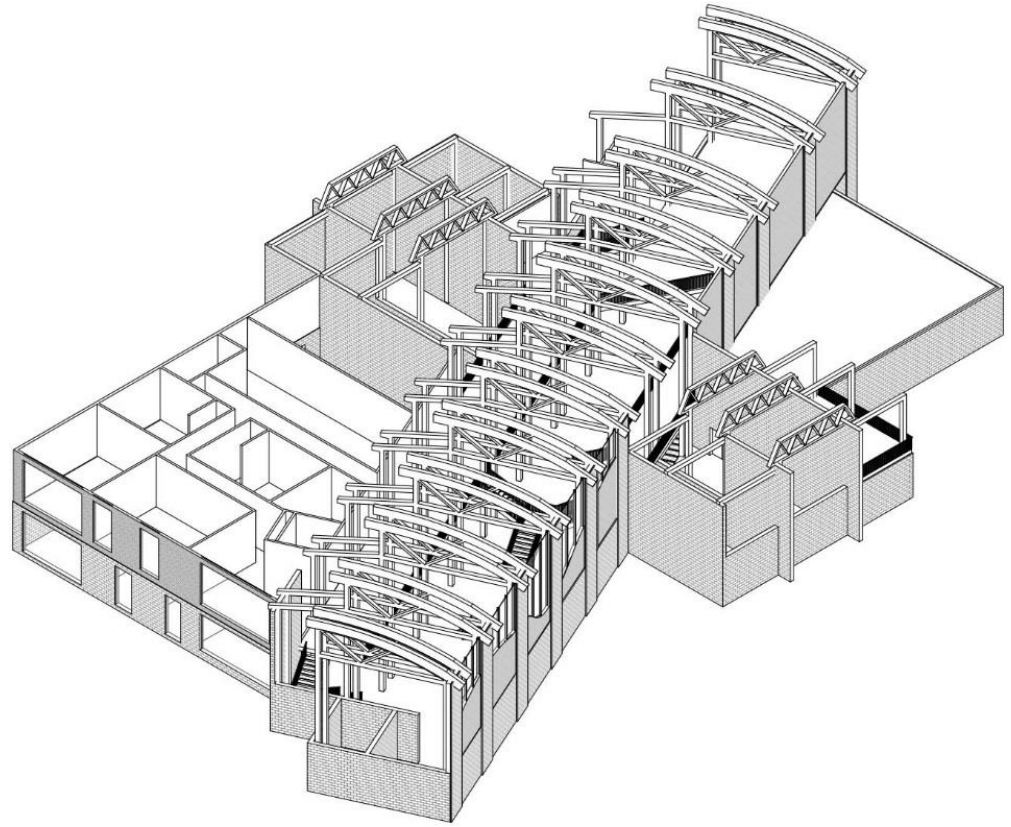
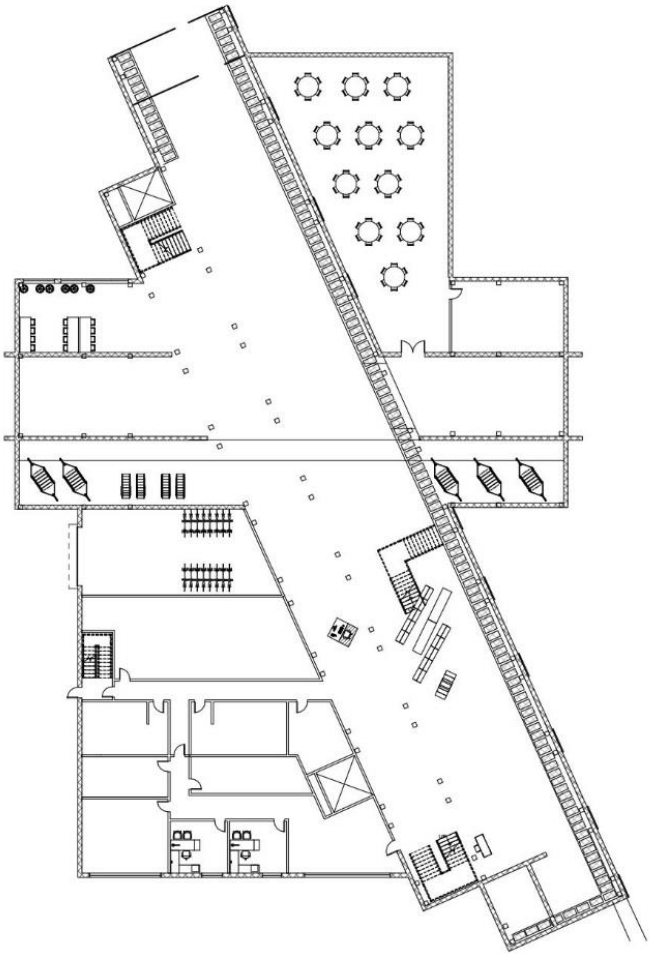
● [how the water rushes along the river banks- **how people move through spaces**]



Design Process 3

ENERGY.

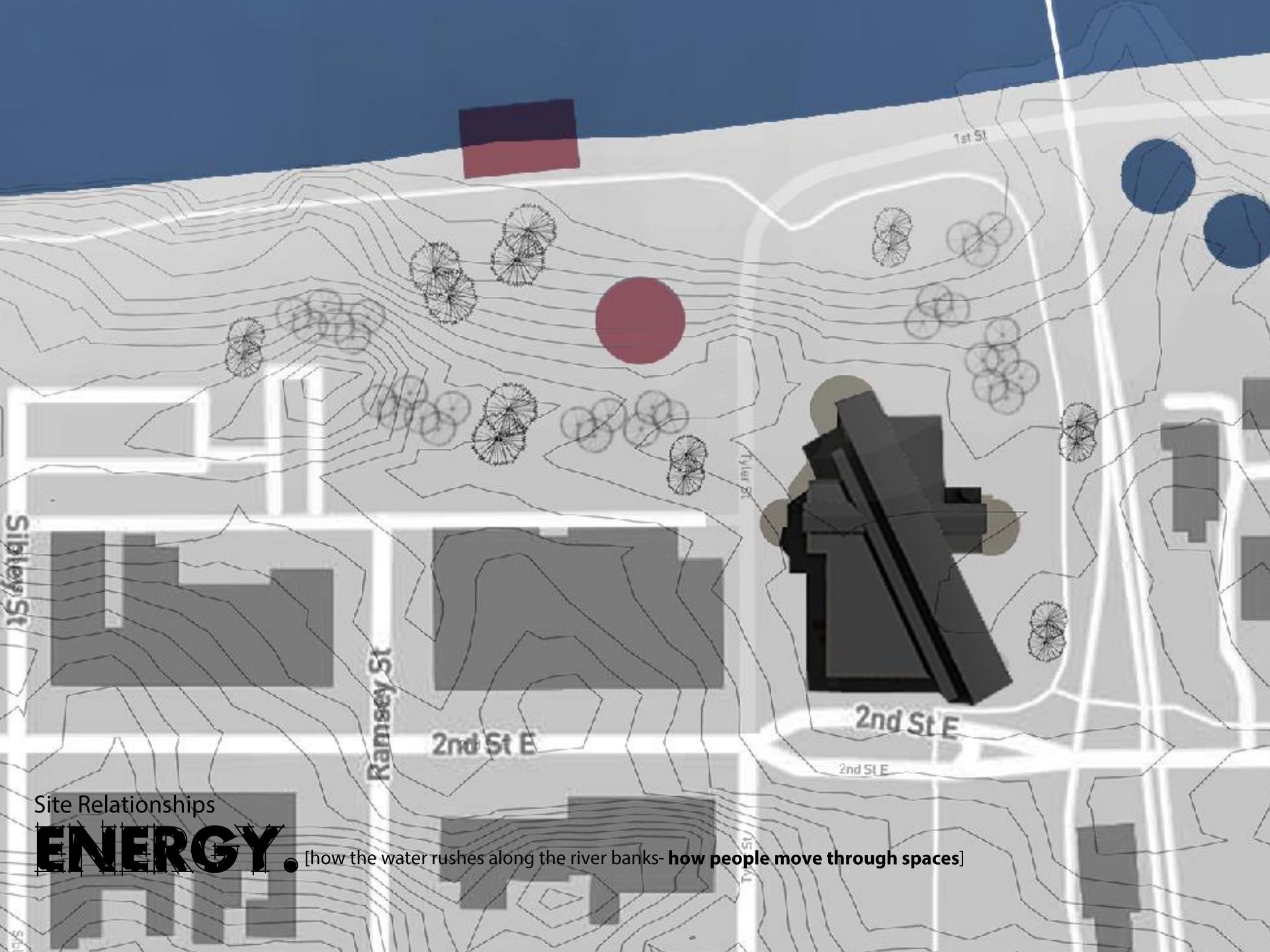
● [how the water rushes along the river banks- **how people move through spaces**]



Design Process 4

ENERGY

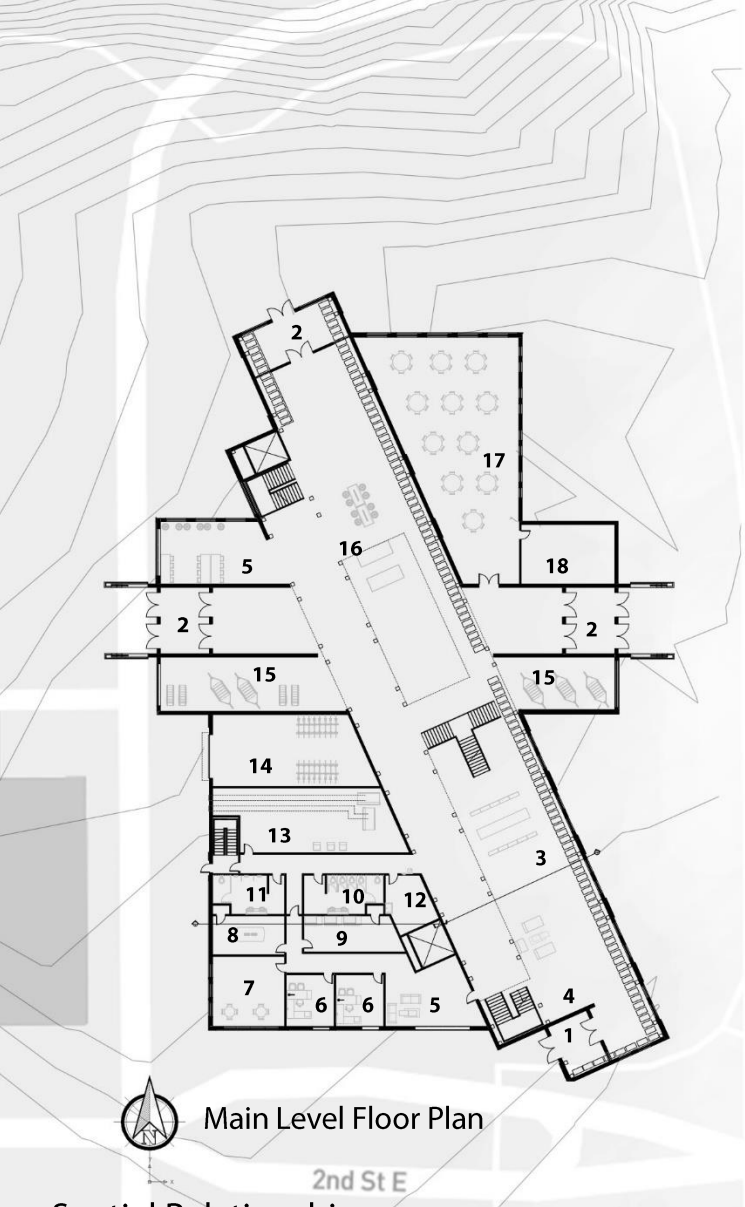
● [how the water rushes along the river banks- how people move through spaces]



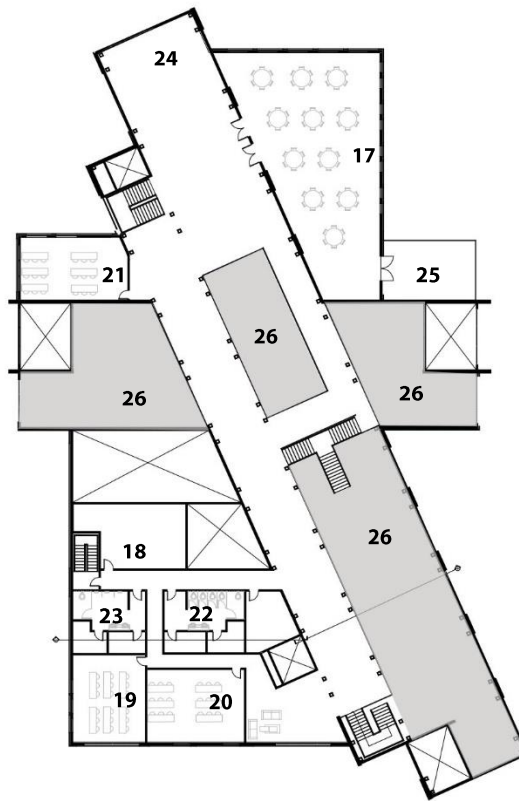
Site Relationships

ENERGY.

[how the water rushes along the river banks- how people move through spaces]



Main Level Floor Plan



Upper Level Floor Plan

Floor Plan Legend

- 1 Main Entry
- 2 Secondary Entry
- 3 Library Space
- 4 Activities Board
- 5 Seating Area
- 6 Office
- 7 Lunchroom
- 8 Conference Room
- 9 Printing Room
- 10 Women's W.C
- 11 Men's W.C
- 12 Janitor Closet
- 13 Mechanical Room
- 14 Garage for rental equipment
- 15 Reading Area
- 16 Exhibit Space
- 17 Community Room
- 18 Storage Space
- 19 Historic Classroom
- 20 Community Classroom
- 21 River Classroom
- 22 Women's Locker room
- 23 Men's Locker room
- 24 Viewing/ Gathering Space
- 25 Outdoor Patio (private)
- 26 Open to below

Spatial Relationships

ENERGY

● [how the water rushes along the river banks- how people move through spaces]



REMEMBRANCE [intersecting materials resembles community working together]



East Elevation



North Elevation

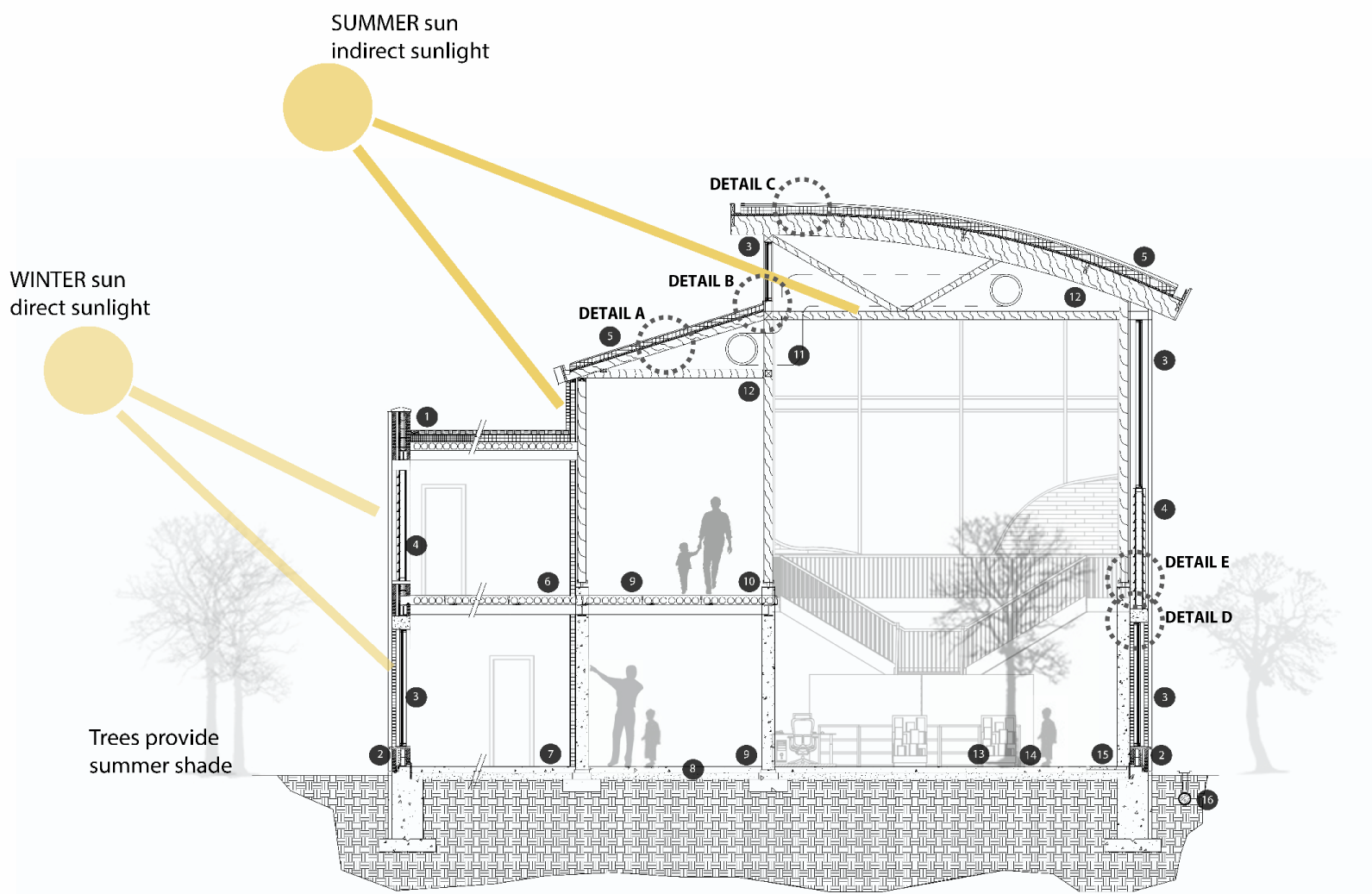


West Elevation



South Elevation

REMEMBRANCE. [intersecting materials resembles community working together]



SUMMER sun
indirect sunlight

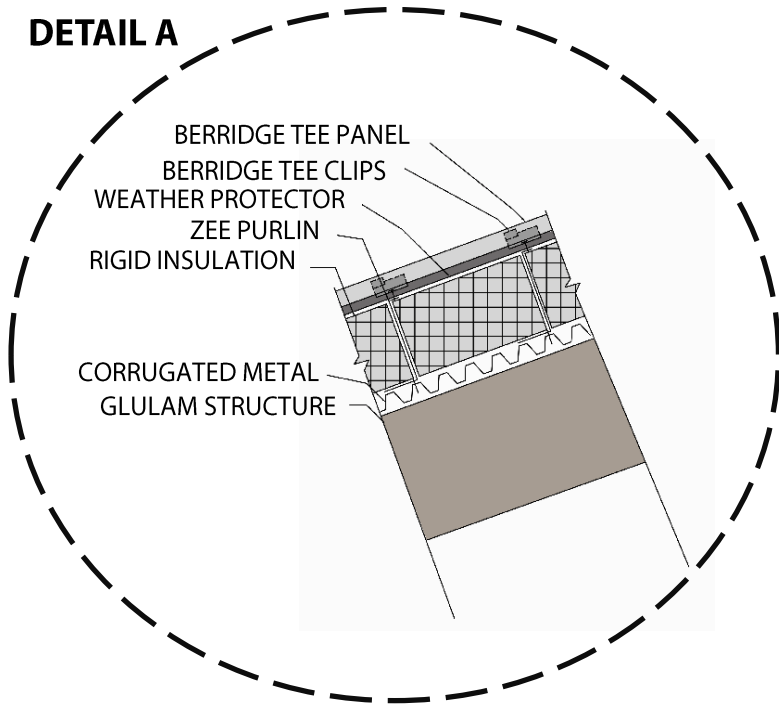
WINTER sun
direct sunlight

Trees provide
summer shade

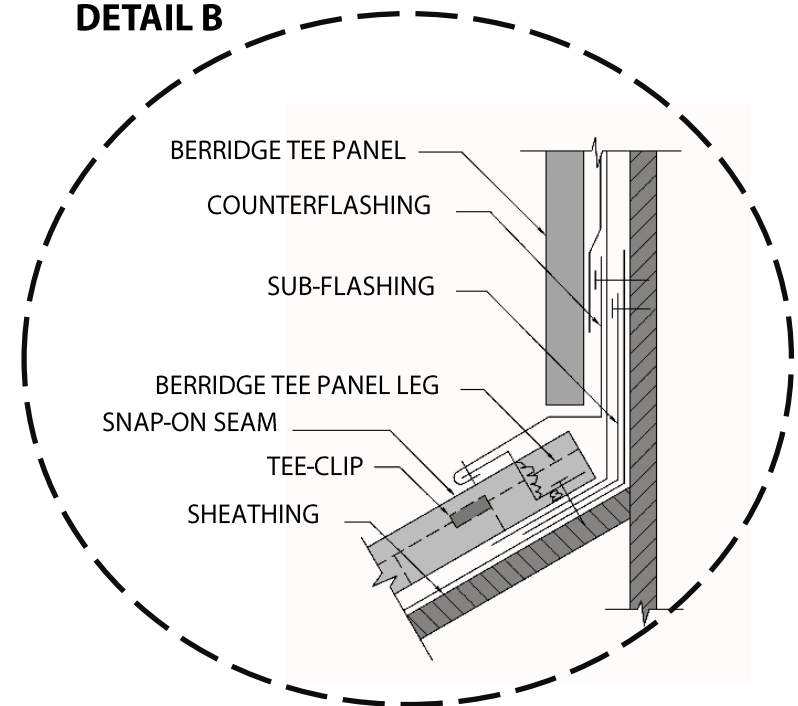
- | | | | |
|--|-----------------------------|---------------------|---|
| 1 Green roof system | 5 Metal panel roof | 9 Corridor | 13 Library (exhibit space beyond) |
| 2 Structural brick wall system (window openings in between glulam structure) | 6 Locker rooms | 10 Saddle detail | 14 Plants emit O2 for healthy indoor environment |
| 3 Electrochromic glass system | 7 Office spaces | 11 HVAC system | 15 Water feature |
| 4 SIPS with wooden paneling | 8 Concrete floor throughout | 12 Glulam structure | 16 Rainwater is harvested and stored for irrigation |

REMEMBRANCE. [intersecting materials resembles community working together]

DETAIL A

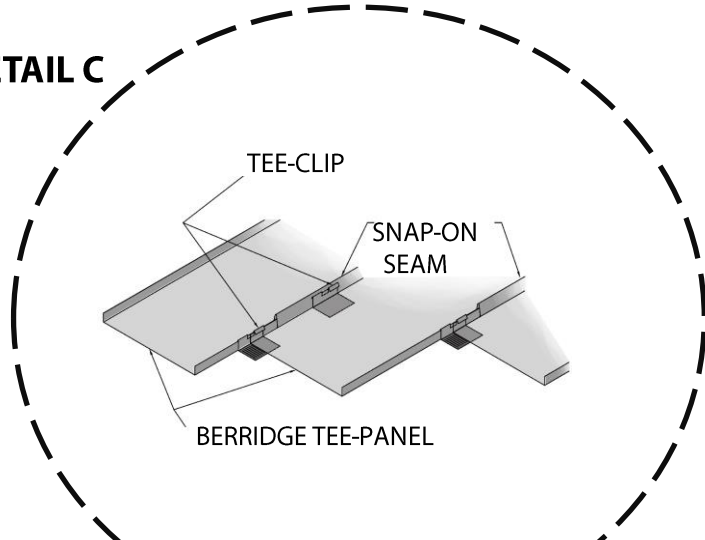


DETAIL B

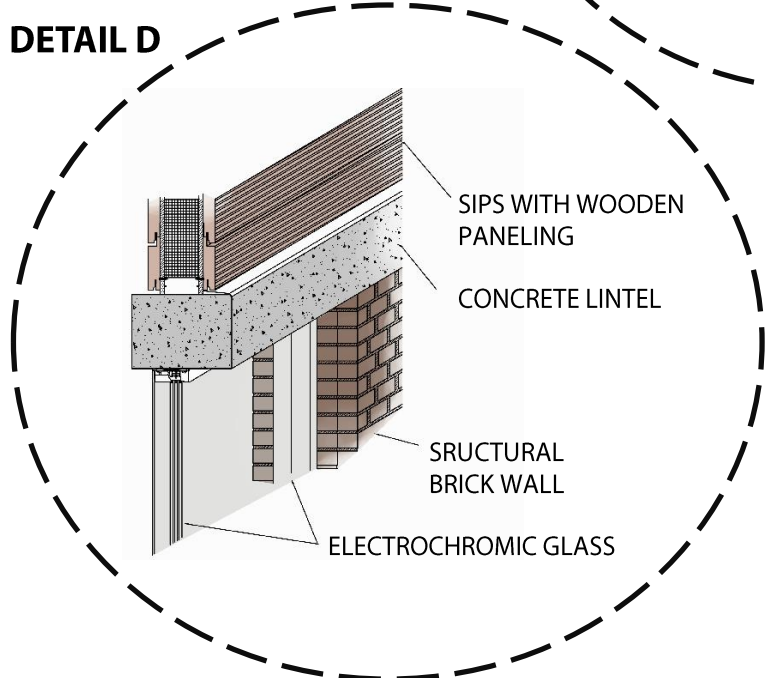


REMEMBRANCE. [intersecting materials resembles community working together]

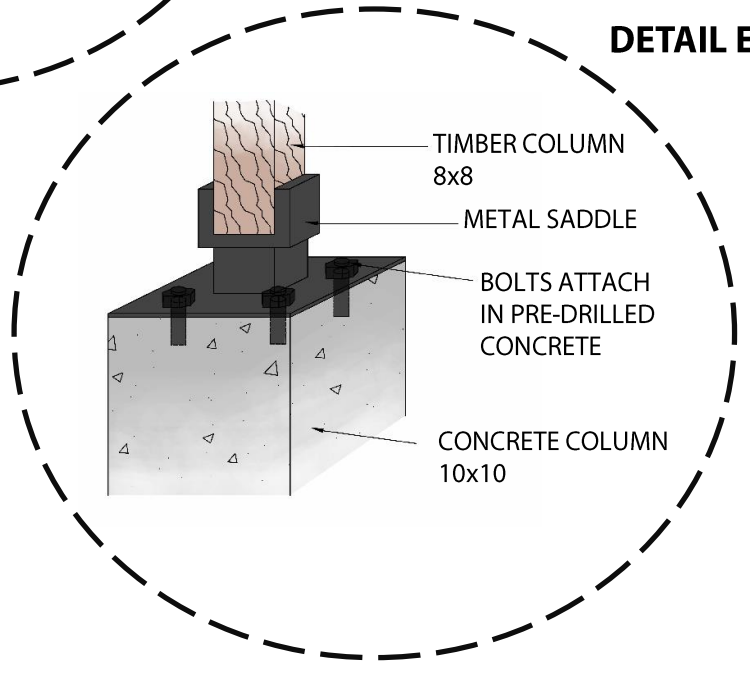
DETAIL C



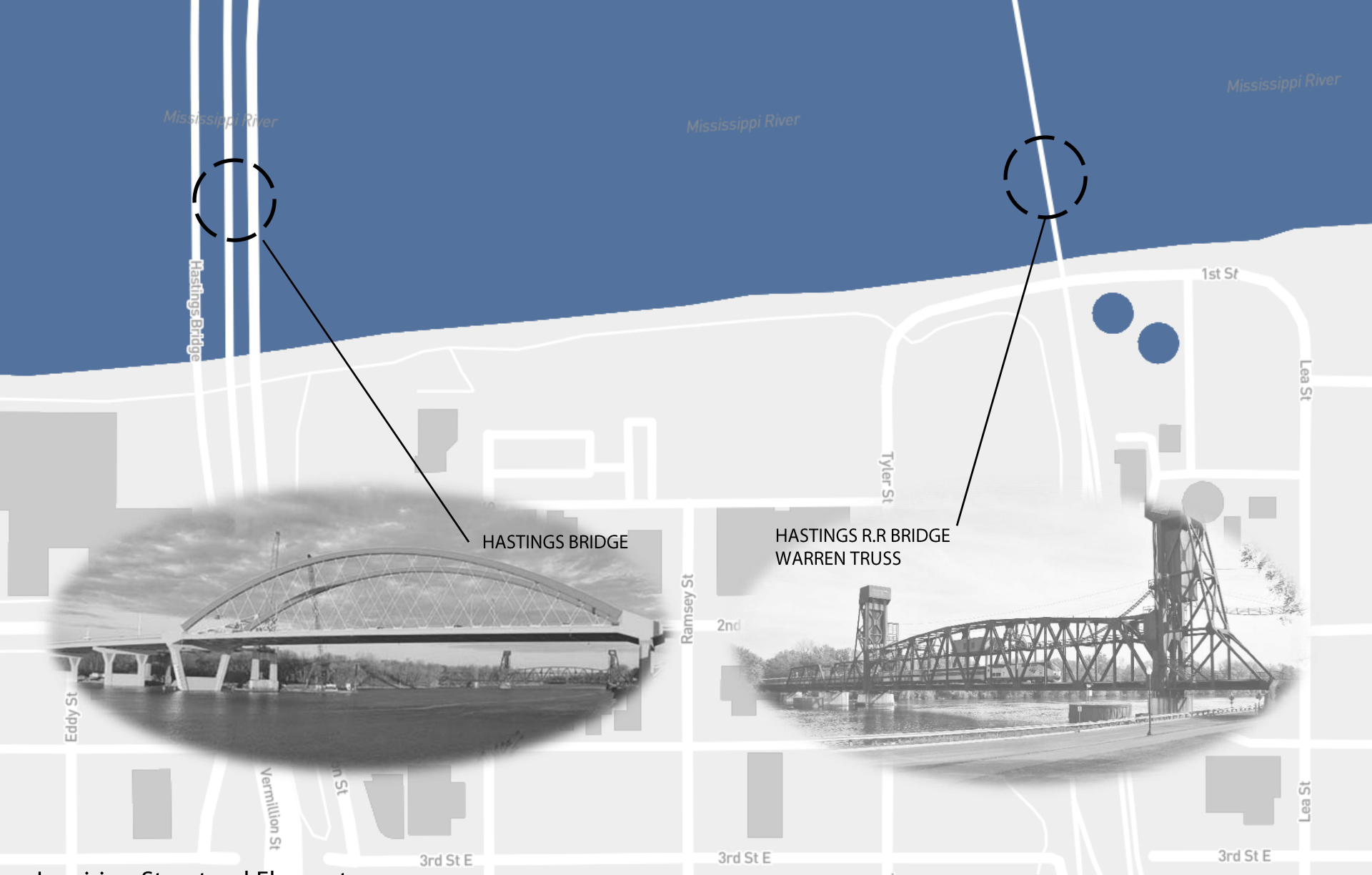
DETAIL D



DETAIL E



REMEMBRANCE. [intersecting materials resembles community working together]



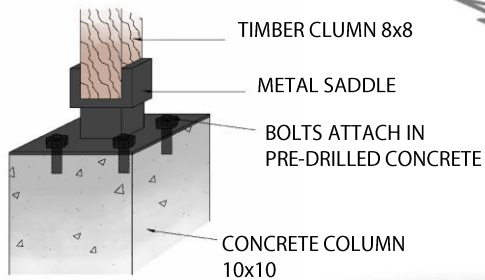
HASTINGS BRIDGE

HASTINGS R.R BRIDGE
WARREN TRUSS

Inspiring Structural Elements

REMEMBRANCE.

[intersecting materials resembles community working together]



HASTINGS BRIDGE



HASTINGS R.R BRIDGE
WARREN TRUSS



Inspiring Structural Elements

REMEMBRANCE.

[intersecting materials resembles community working together]



REMEMBRANCE. [intersecting materials resembles community working together]

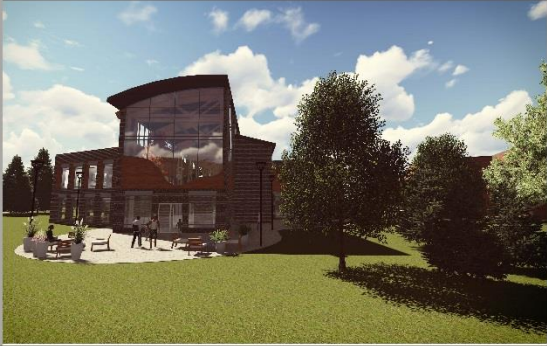
Main Entrance (south)



Side Entrance (east)



View from dock



Back Entrance (north)



Side Entrance (west)



Skating rink

RELAX. [allow for nature to come within- rather than block it out]

Full view of interior



Reading space



Classroom (river)



Community Space



Overlooking Exhibit



Gathering/ Viewing area

RELAX. [allow for nature to come within- rather than block it out]

**THANK YOU...
QUESTIONS OR COMMENTS AFTER THE VIDEO**

