

THE END OF THE MILL;

A FORENSIC INTERPRETATION OF SWANY WHITE AND RECONSTRUCTION OF A LOCAL BREWERY

How a historic site of a mill in central Minnesota can be revived to benefit a small community.



PAISLEY PARK - FRIDAY, APRIL 29TH - 1:00 PM



WHAT DOES PRINCE HAVE TO DO WITH IT?



MILL CITY MUSEUM

MINNESOTA PRIDE FOR FLOUR



SURLY BREWERY

MINNESOTA PRIDE FOR BEER



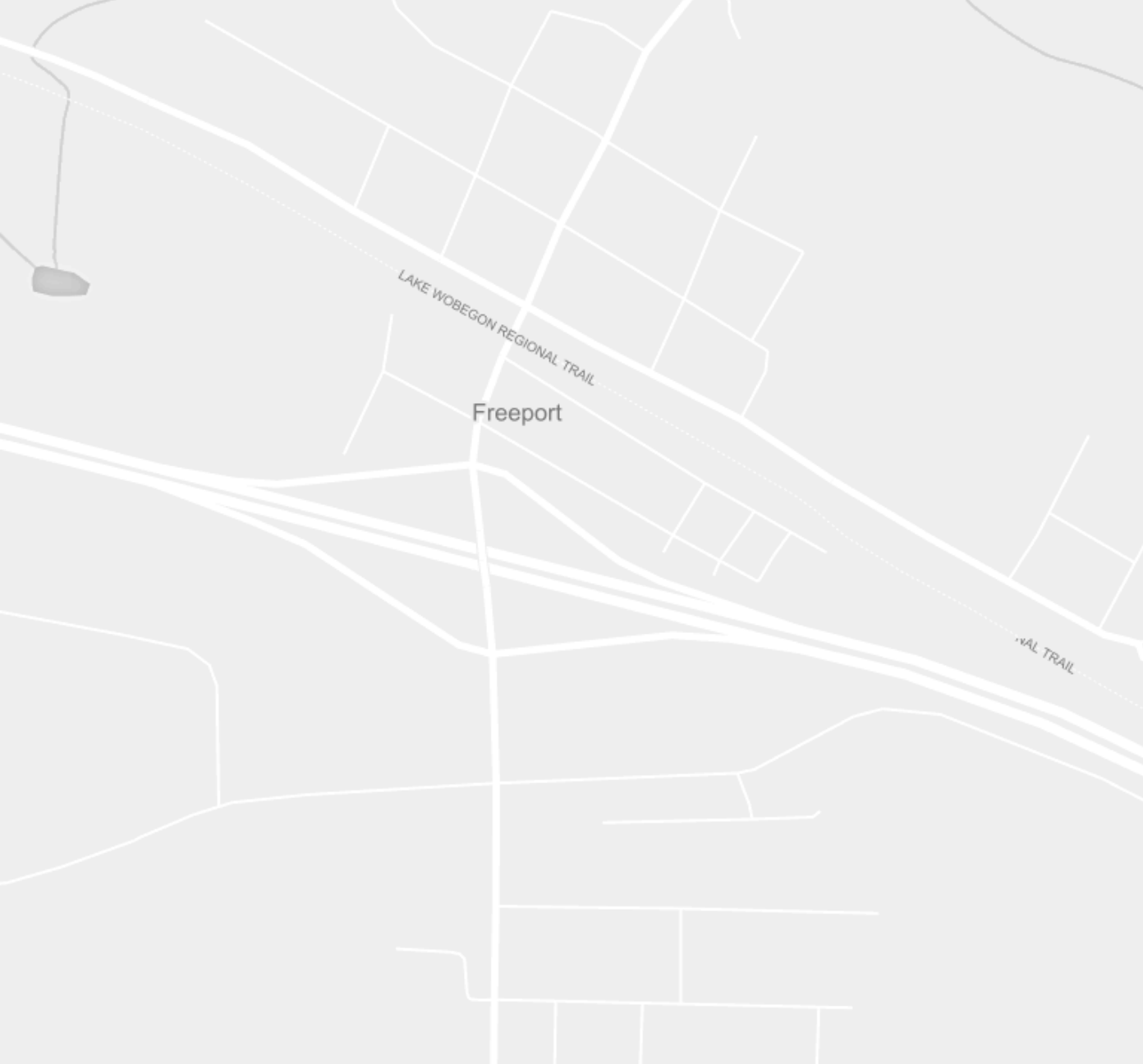
FREEPORT & THE RUINS OF THE OLD MILL



FREEPORT



FREEPORT



FREEPORT

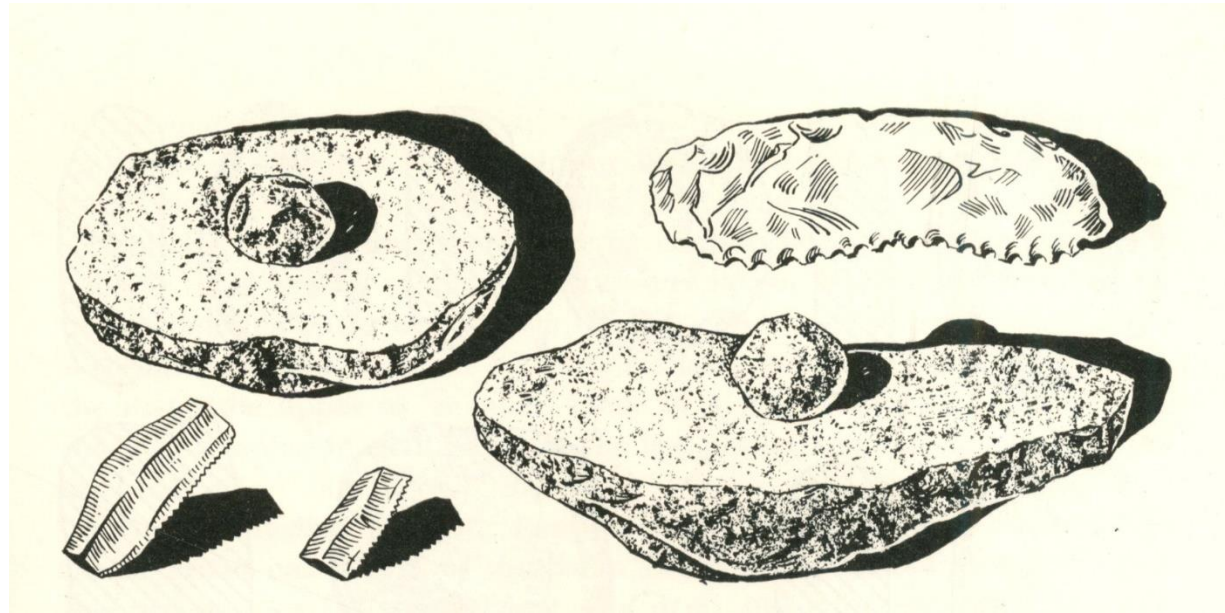








FLOUR & ITS IMPACT ON MINNESOTA



Prehistoric nomads use stones to grind down grains to make them easier to eat.

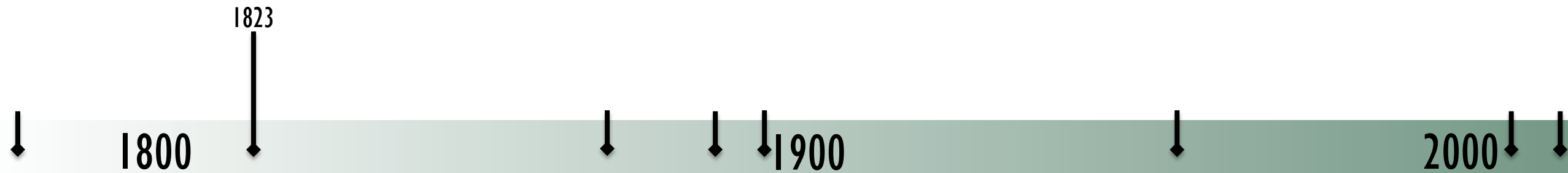
1800

1900

2000

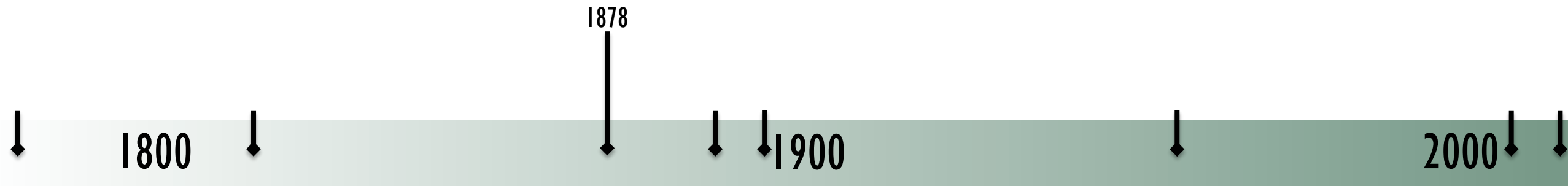


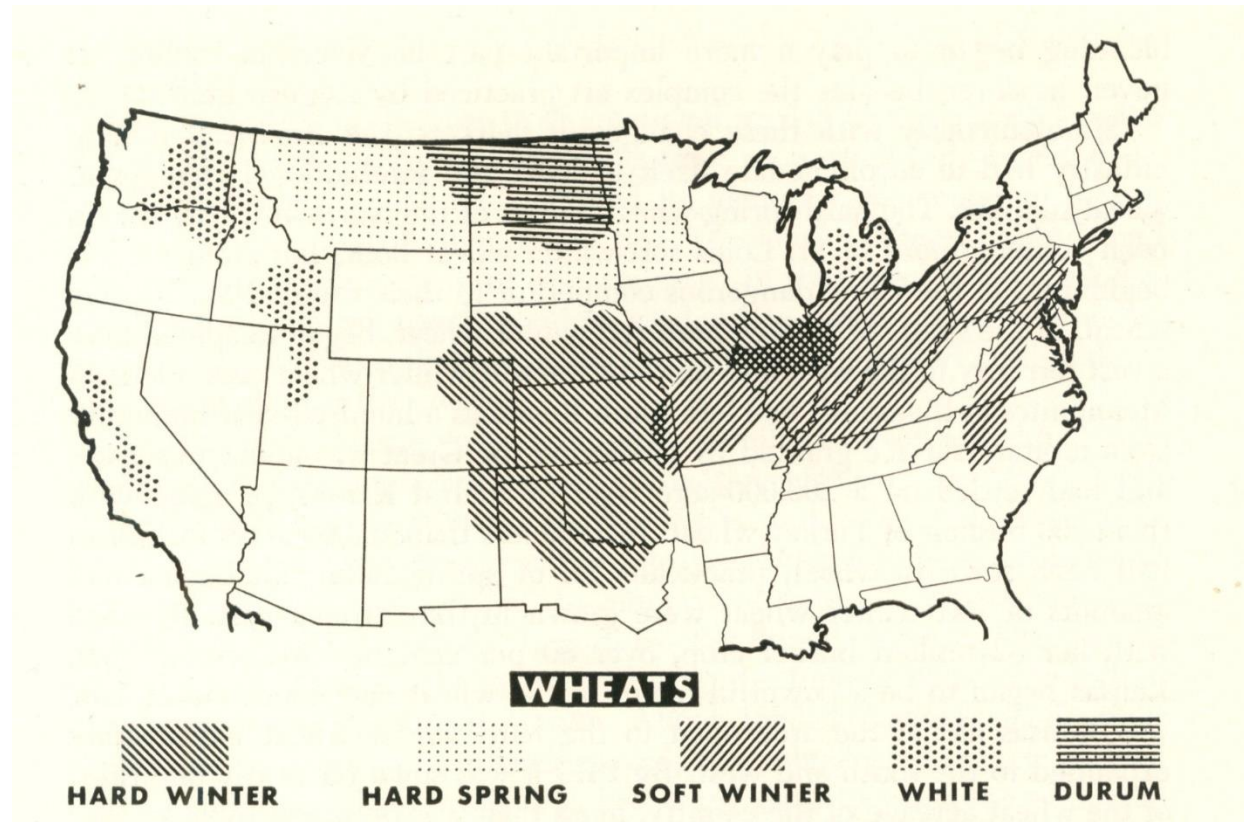
First Steam boat reaches St. Anthony Falls in Minneapolis.



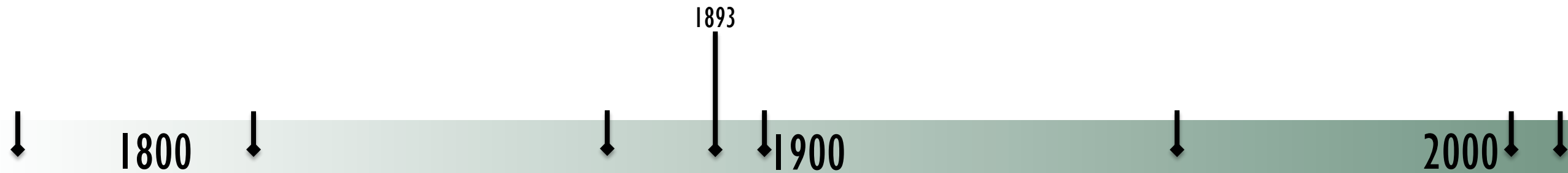


Explosion at Washburn Mill in Minneapolis, the largest mill in the world at the time. Reducing statewide flour production by 1/3.





Minnesota produces more flour than anywhere else in the world.





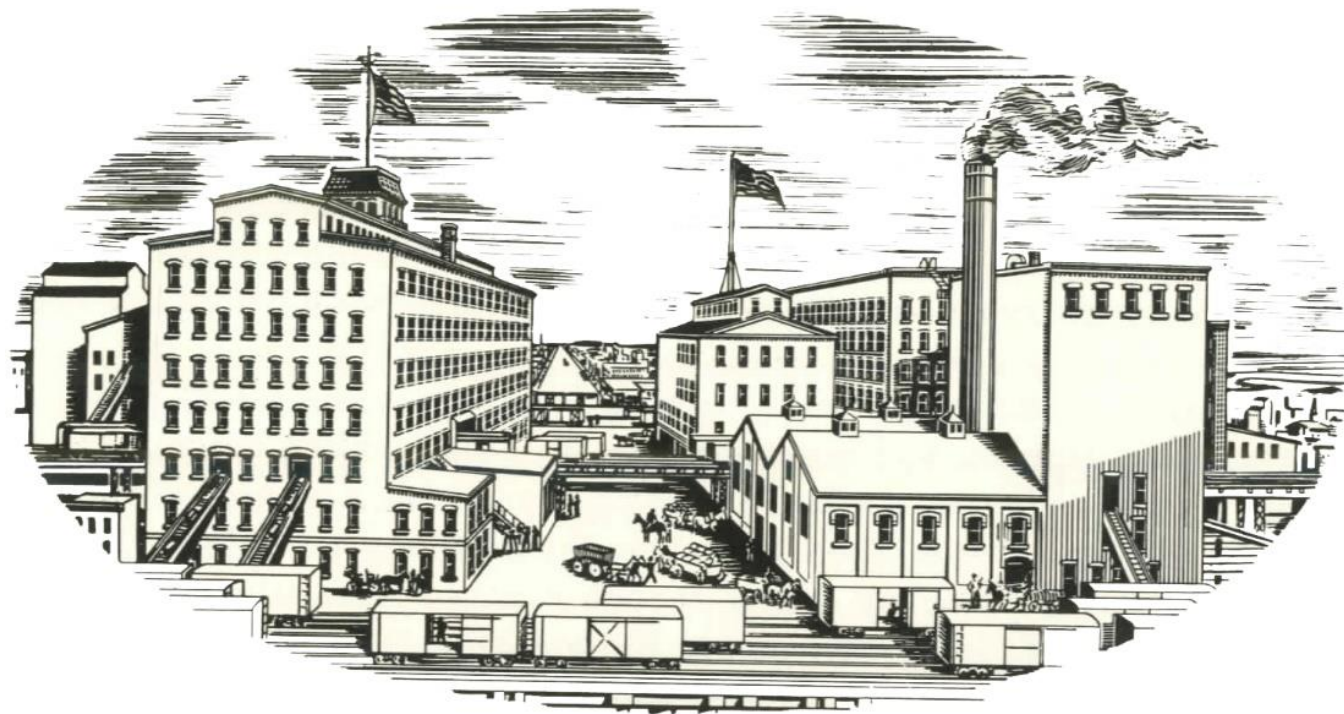
Swany White Flour opens in Freeport.

1898

1800

1900

2000



The Washburn Mill in Minneapolis closes.

↓
1800 ↓

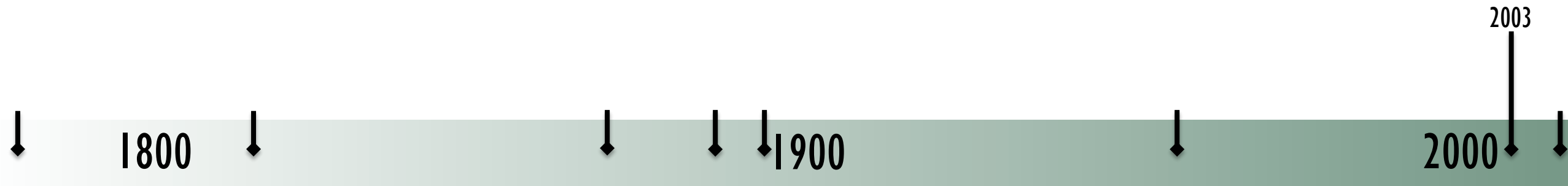
↓ ↓ ↓
1900

1965

↓ ↓
2000 ↓ ↓

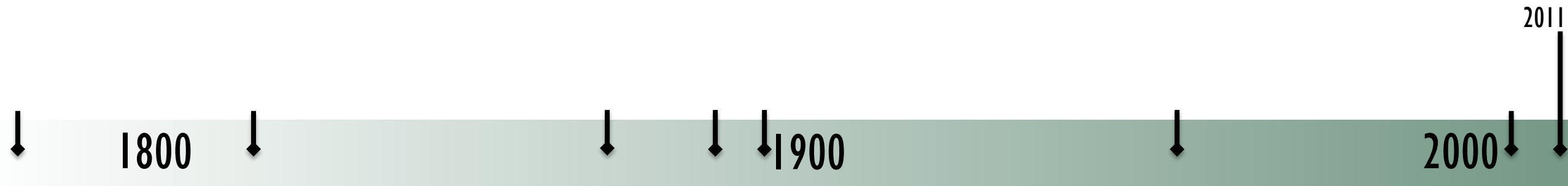


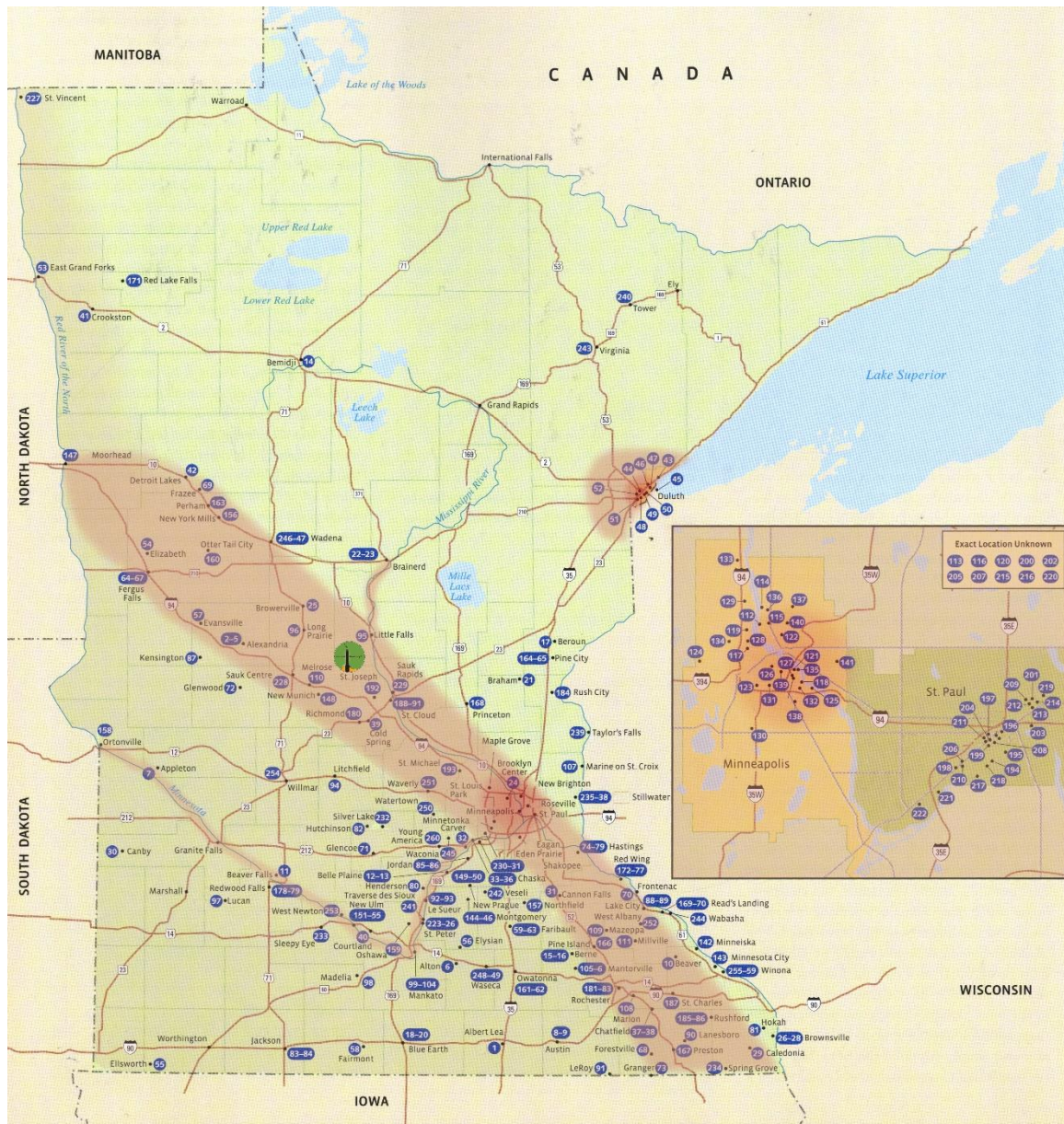
Mill City Museum opens in the ruins of the old Washburn Mill.





Swany White Flour burns down.





EXPANSION OF MINNESOTA FLOUR



BEER & THE SHIFT AWAY FROM LOCAL BREWERIES

FROM



1896

TO



1919

TO



2016

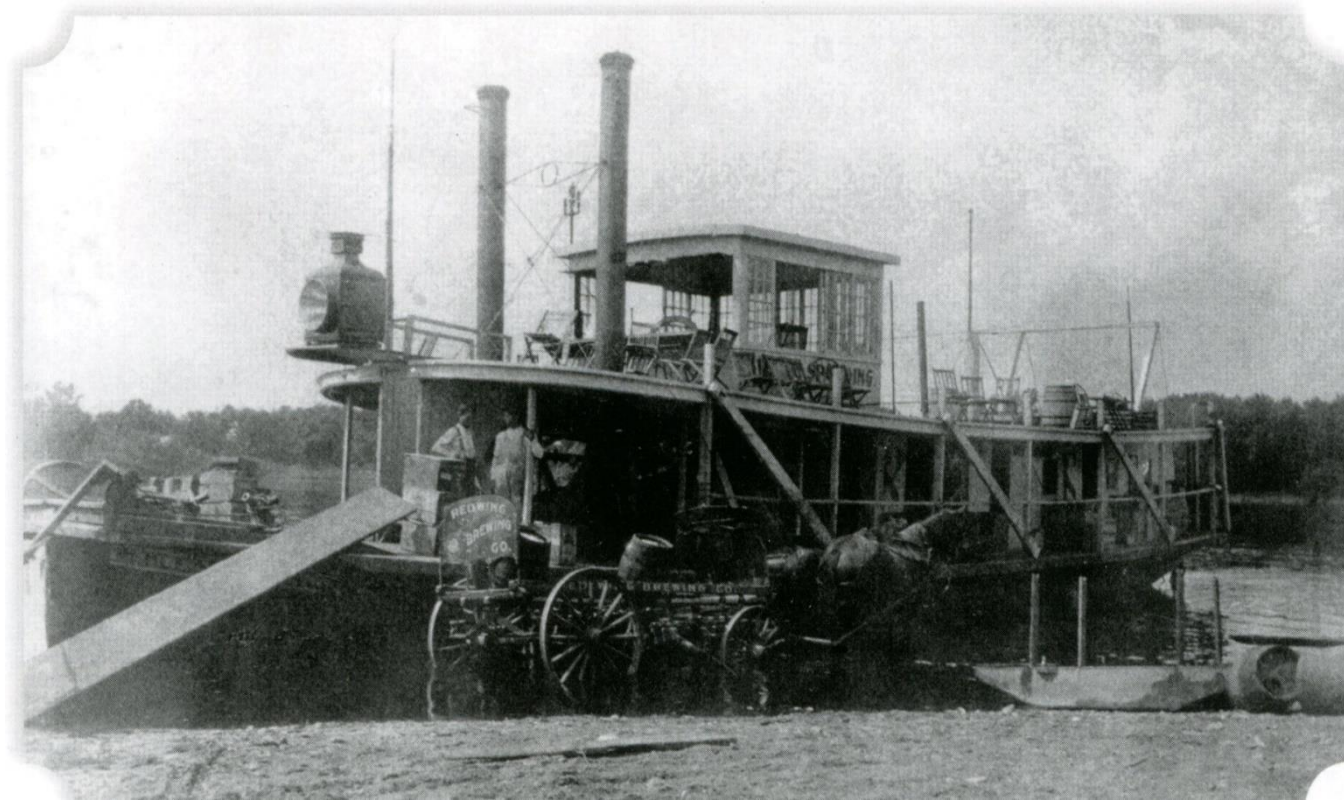


Historians speculate that Prehistoric nomads made beer before learning to make bread.

1800

1900

2000



Minnesota becomes a State with 30 breweries already established.





The amount of breweries in the state double from 30 to 60 in one year.

1862

1800

1900

2000



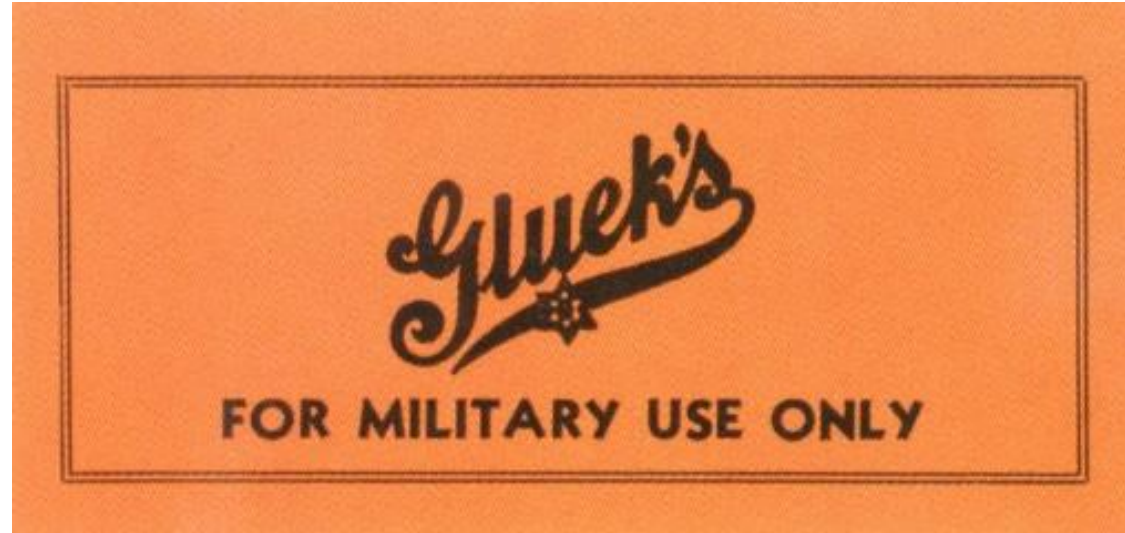
Prohibition begins: While some breweries continued to secretly make beer, most closed down for good.





Prohibition ends: Most small breweries were unable to reopen.





WWII — Minnesota breweries are contracted by the government to brew beer, with lower alcohol, specifically for the military.



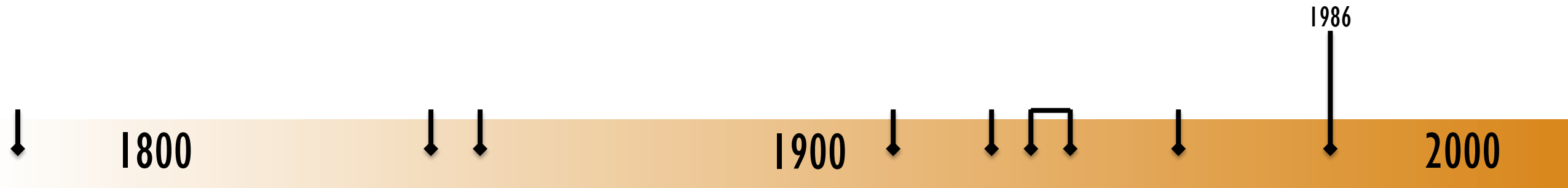


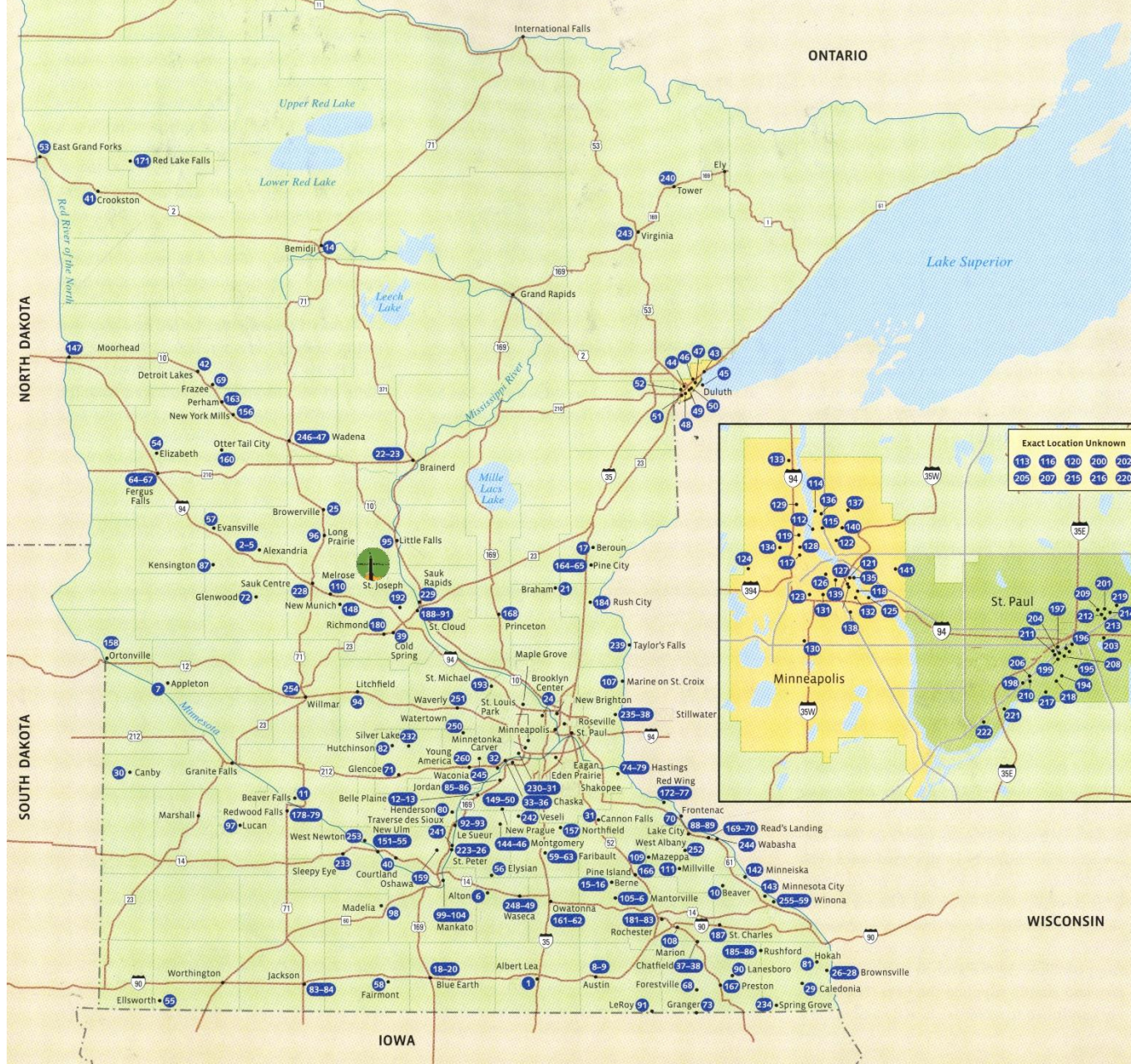
Most local breweries in the state are closed, while the larger breweries gain control of the market.





Summit Brewing Company opens as the first craft brewery in the state.





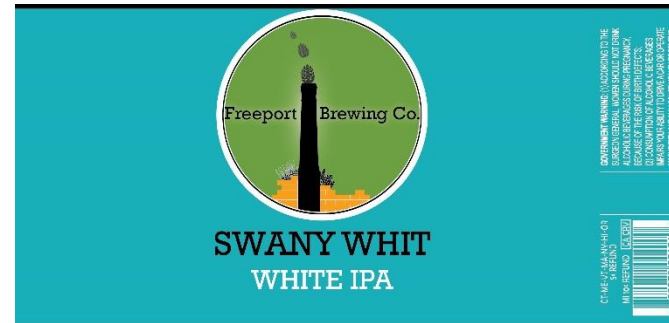
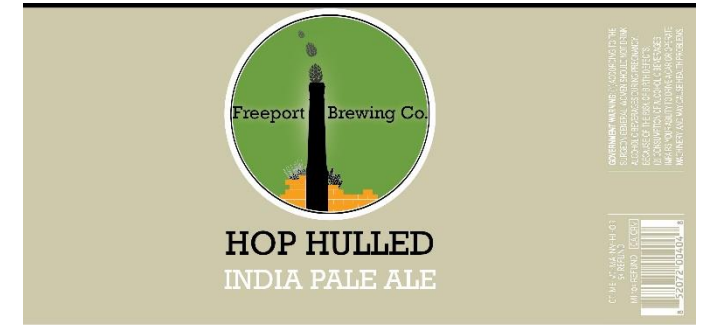
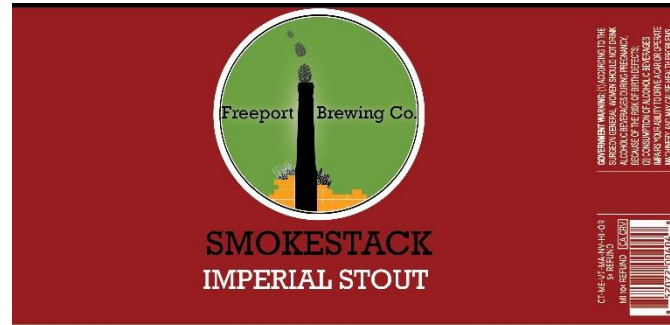
EXPANSION OF MINNESOTA BEER

How a historic site of a mill in central Minnesota can be revived to benefit a small community.

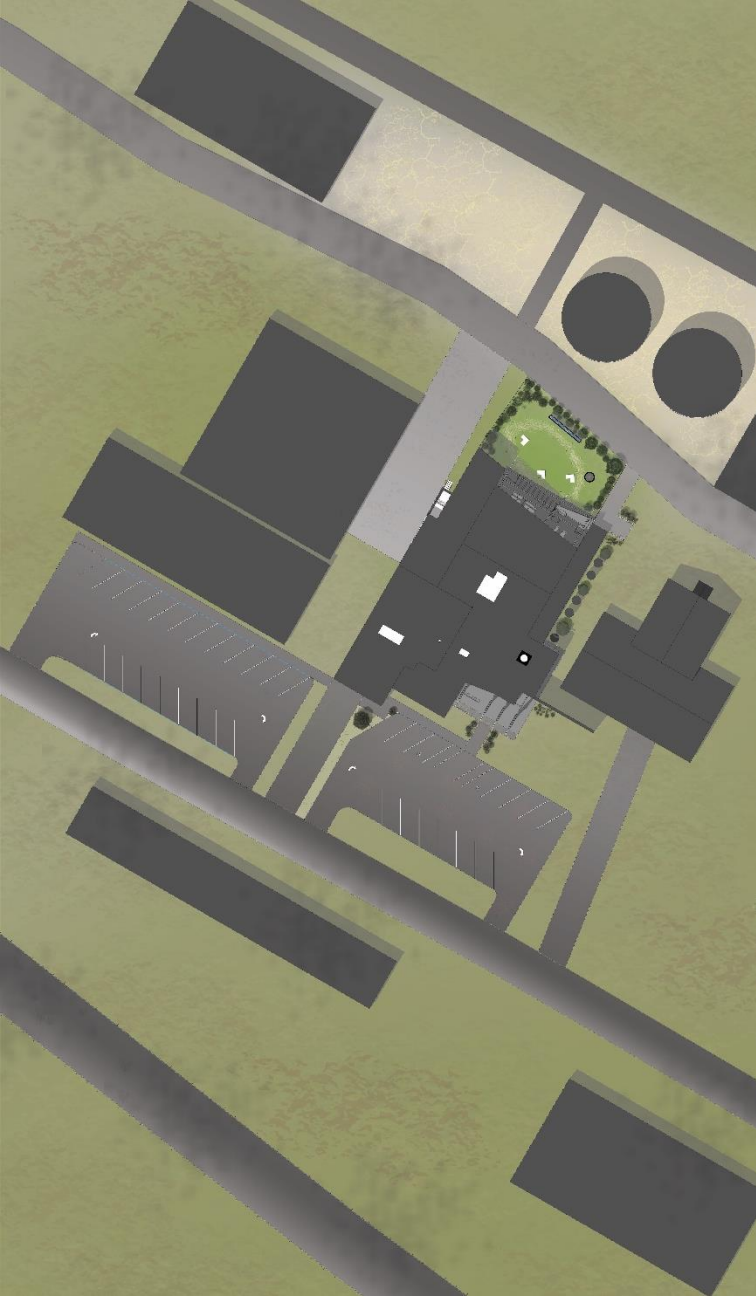
RESTORED PLACE NOT REPLACEMENT



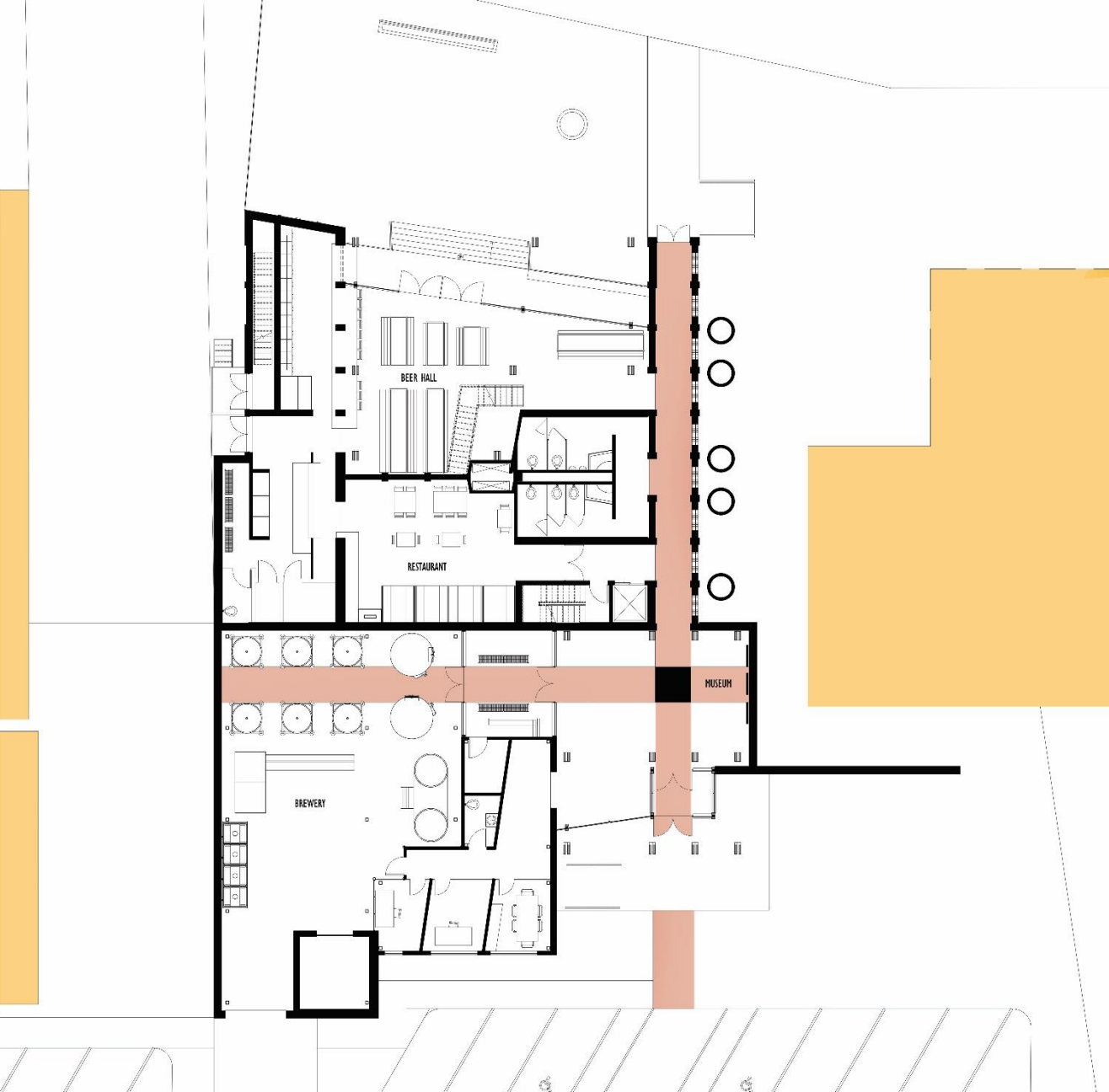
SITE LOCATION



MORE THAN JUST ARCHITECTURE



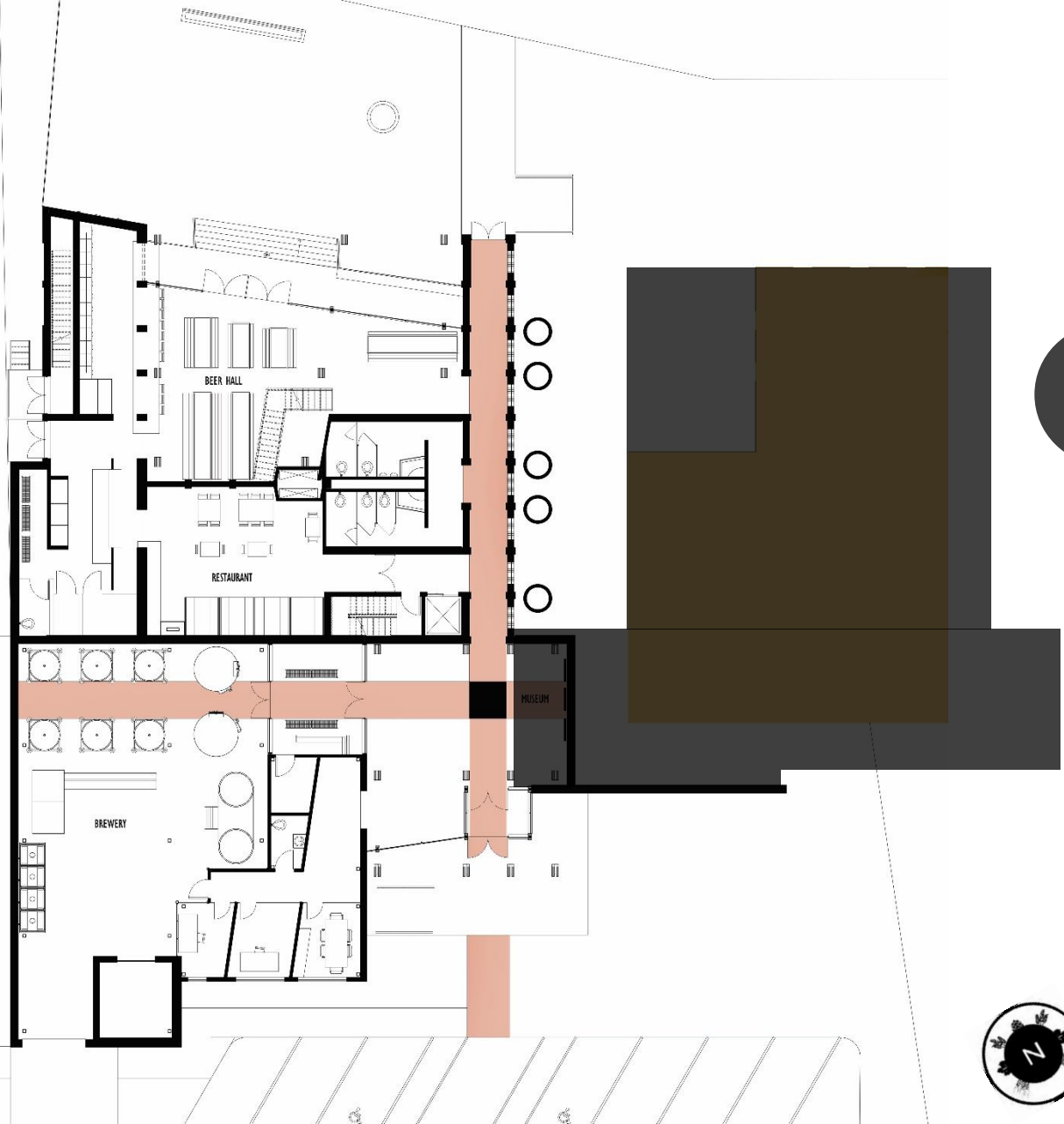
SITE PLAN



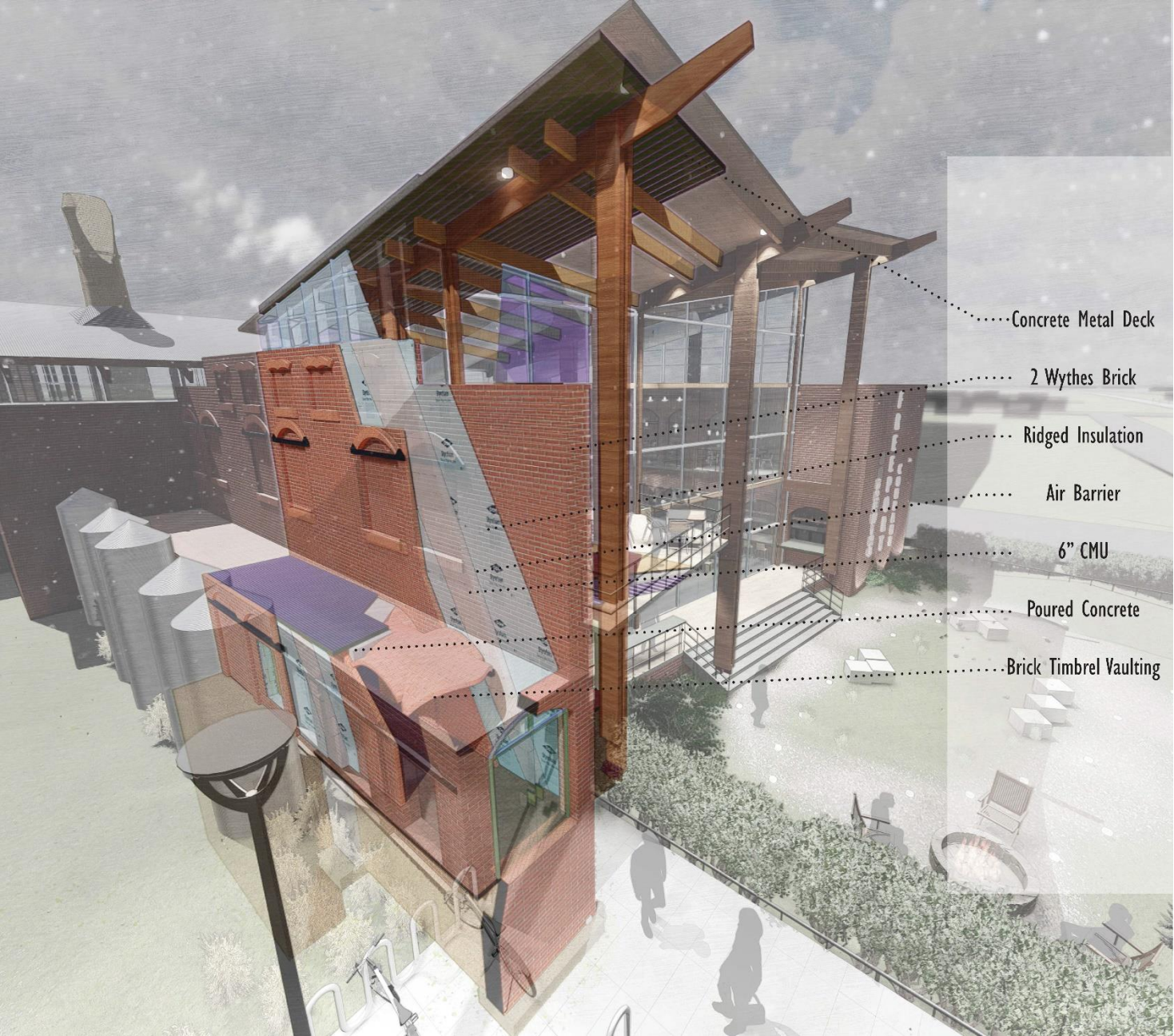
FIRST FLOOR



SECOND FLOOR

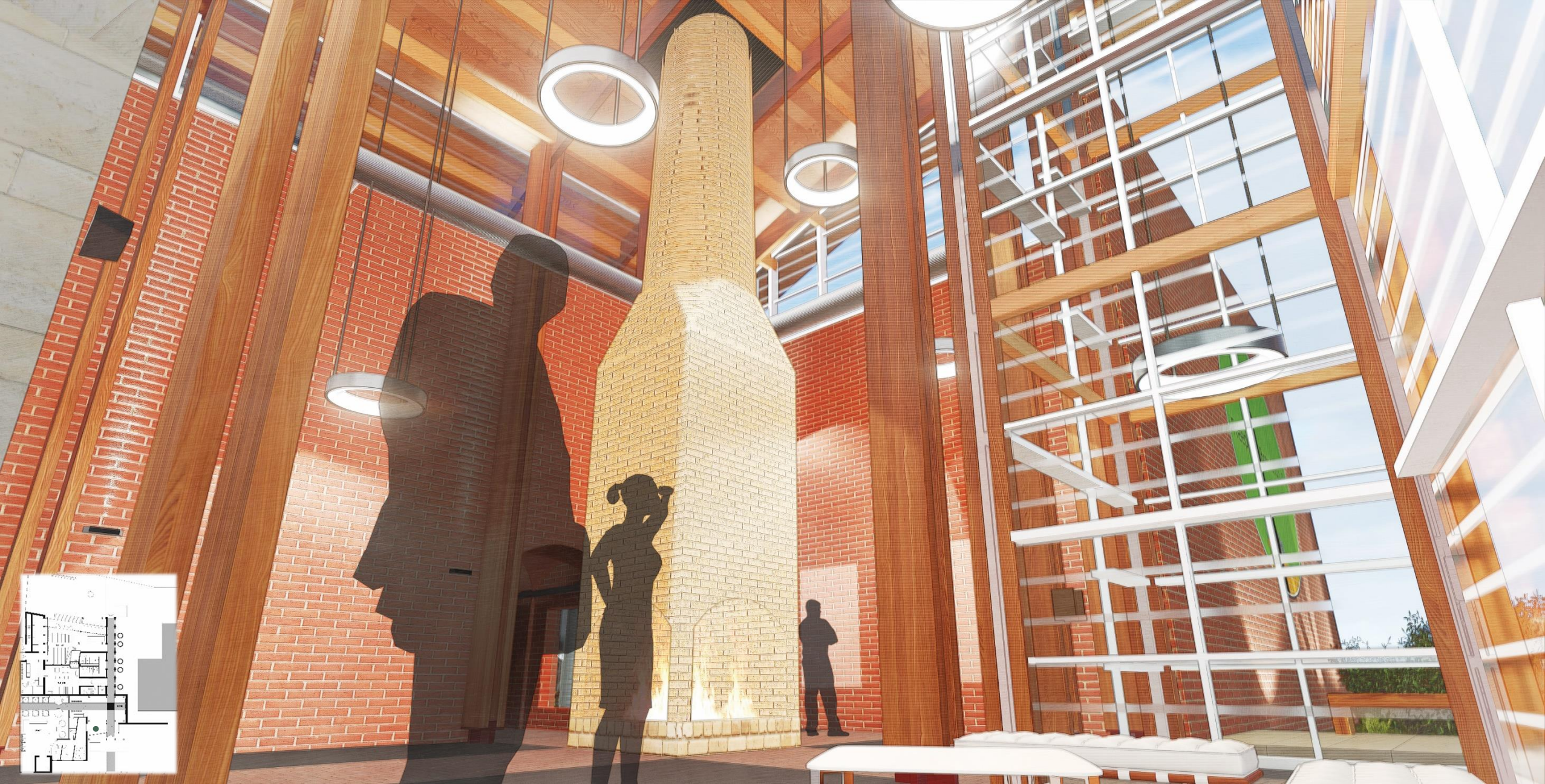


OLD MILL LOCATION



-Concrete Metal Deck
- 2 Wythes Brick
- Ridged Insulation
- Air Barrier
- 6" CMU
- Poured Concrete
- Brick Timbrel Vaulting

CONSTRUCTION DETAIL



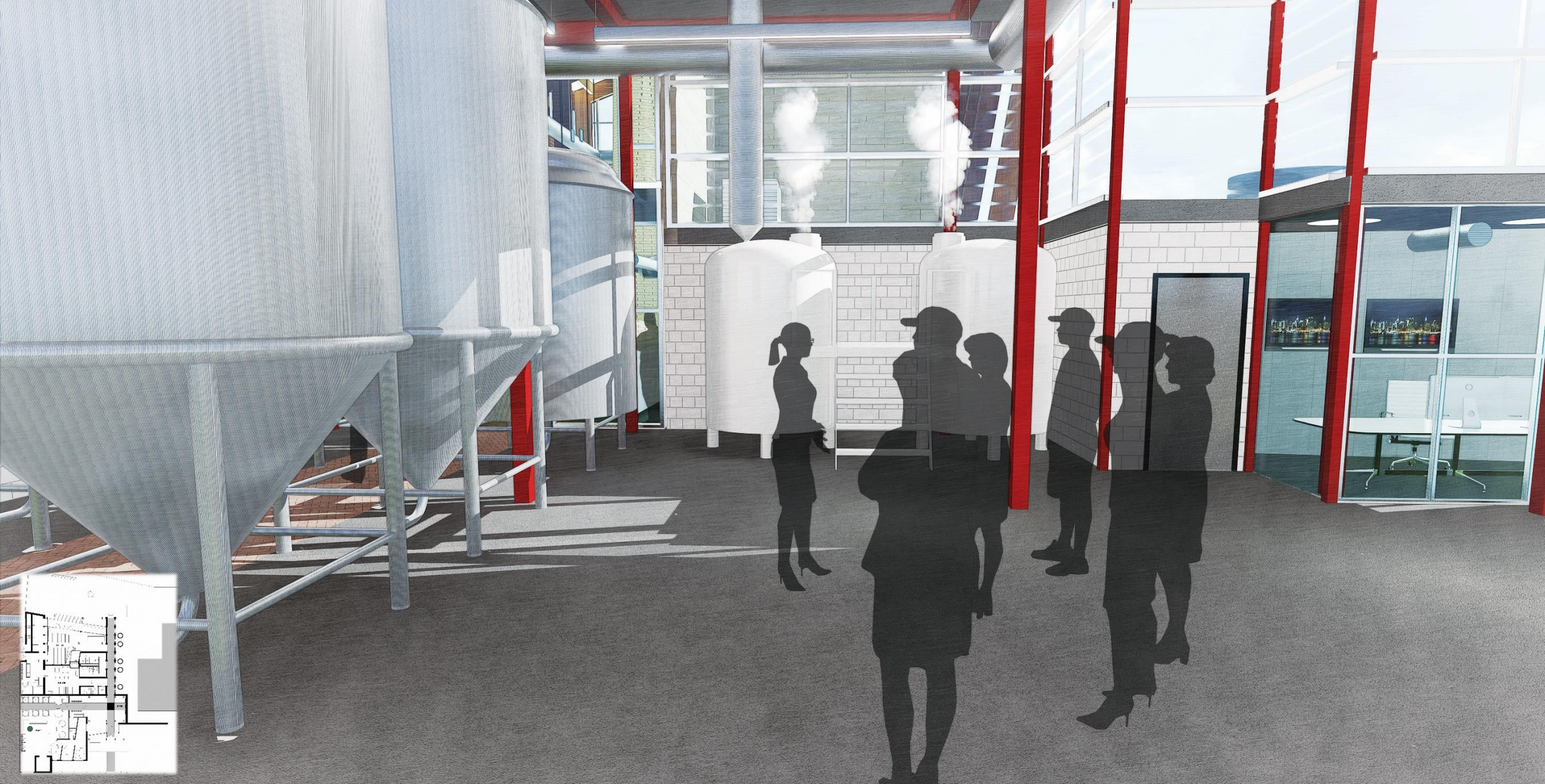
MAIN ENTRANCE



MUSEUM



VAULTED CORRIDOR



TOUR



BEER HALL



BACKYARD



PROST!