

# *Human's Offense – Nature's Defense*



Craig Cusick  
Final Architectural Design Thesis  
Steve Martens, Architect  
ARCH 772, Spring 2016

# What's The *Point*?

No matter how long or to what extent humans intervene with a natural setting, mother nature will always eventually take back ownership of the land.



As humans, we must accept this reality, learn from past mistakes, and design for its eventuality



# Describe The *Point*

Site Selection & Its Impact  
Culture of the North Shore  
A Design for the Public  
A Design With Nature's Future in Mind



# Where's The *Point*?

## Site Selection & Its Impact



35 Minute Drive to Duluth  
25 Minute Drive to Two Harbors

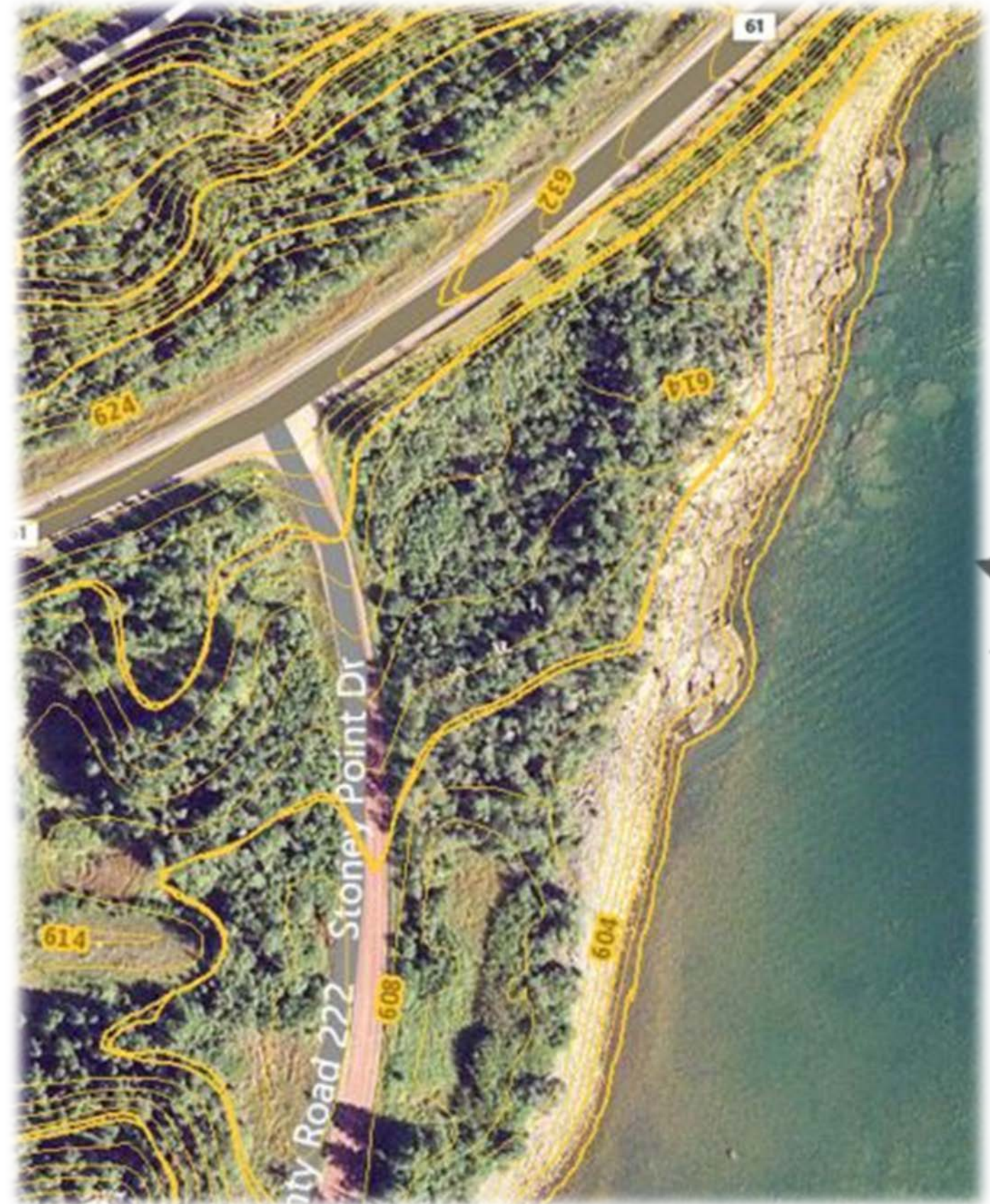


Stoney Point

# The Old *Point*

Existing Site Conditions...

Topography  
Geology  
Vegetation  
Wildlife  
The Lake



Stoney Point

# The New *Point*

Intersection of North Shore Scenic Drive and Stoney Point Drive – Along shore of Lake Superior

- Visited by thousands of people each year
- Protected under governing agencies
- Misunderstood by many
- Understood by few



# The New Point

Building Visible From Roads – Easy Access

Building Open to Lake to Maximize Views from Top Floor

Foot Traffic to Increase on the Point



Short Hiking Trails Throughout Site

Building Placed Where Plantings Are Minimal to Decrease Amount of Plants to be Removed

Exhibits Located Along Trails



# Remember The *Point*

Culture of The North Shore

Remembrance of What is Important



Split Rock Lighthouse



Hiking Trail – Tettegouche State Park

Remember The Point

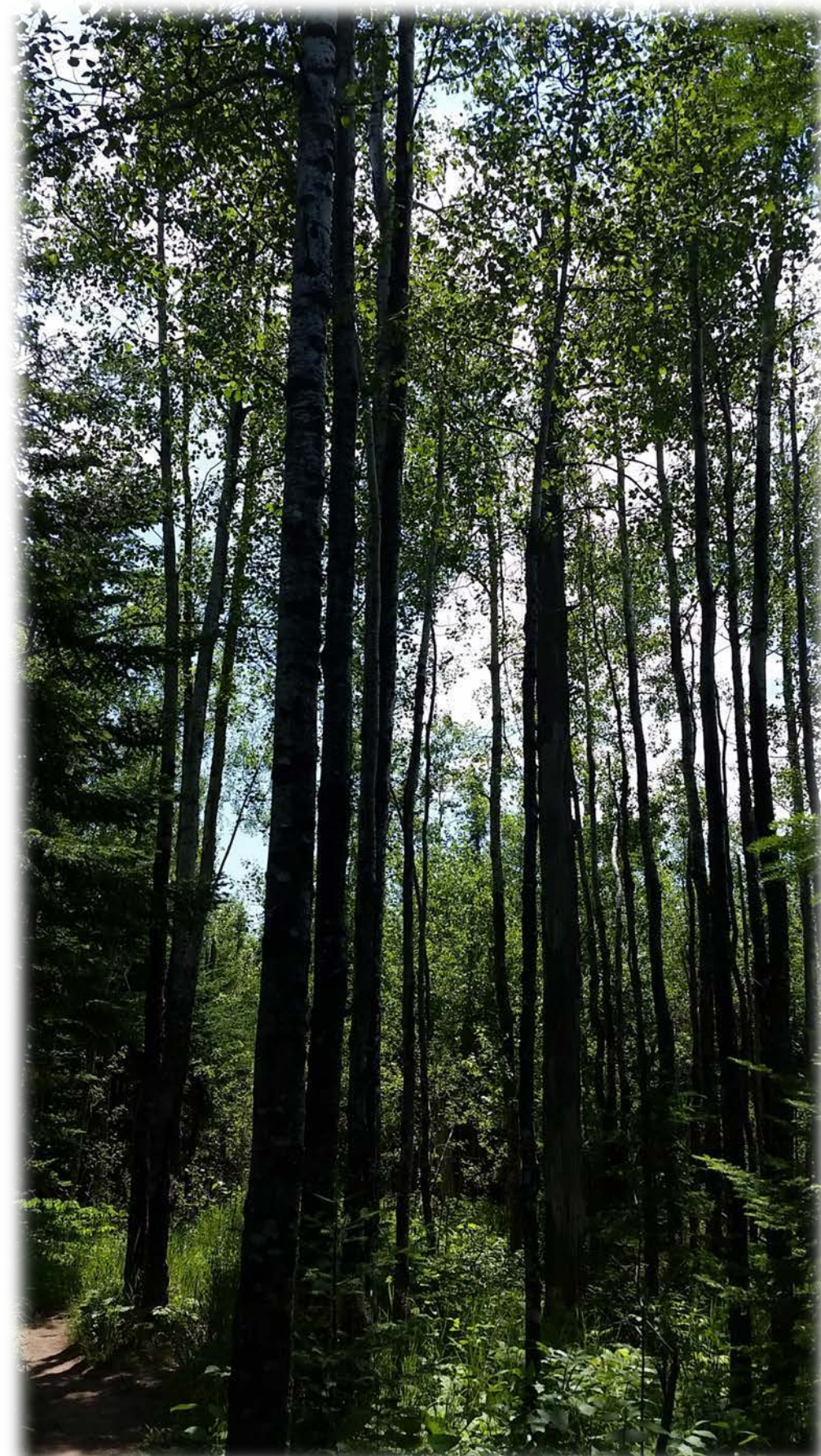


# Remember The *Point*

Scenic Views  
Hiking Trails  
Natural Phenomenon



Gooseberry Falls State Park



Forest – Tettegouche State Park

Remember The Point

# Remember The *Point*



Remember The Point

Hiking Trail – Gooseberry Falls State Park

Discover The *Point*

A Design for the Public



Stoney Point



# Engage The *Point*



Stoney Point

Stoney Point

# Engage The *Point*

Before



# Engage The *Point*

After



# Engage The *Point*

Before



# Engage The *Point*

After



WATERWORKS



# Engage The *Point*

Before



WATERFRONT

# Engage The *Point*

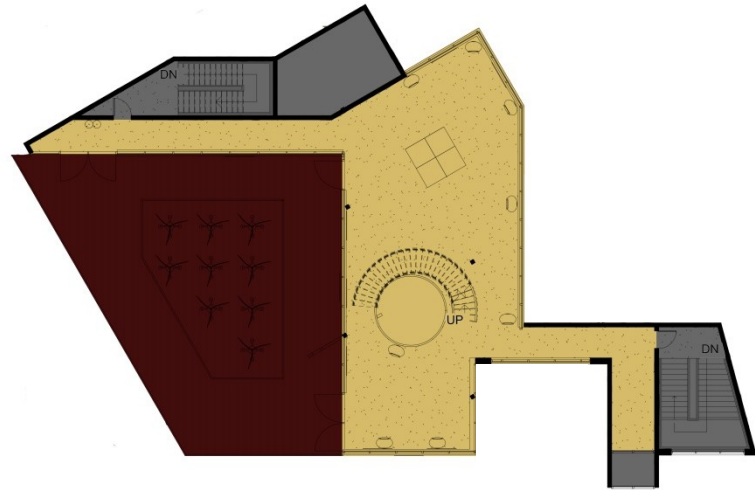
After



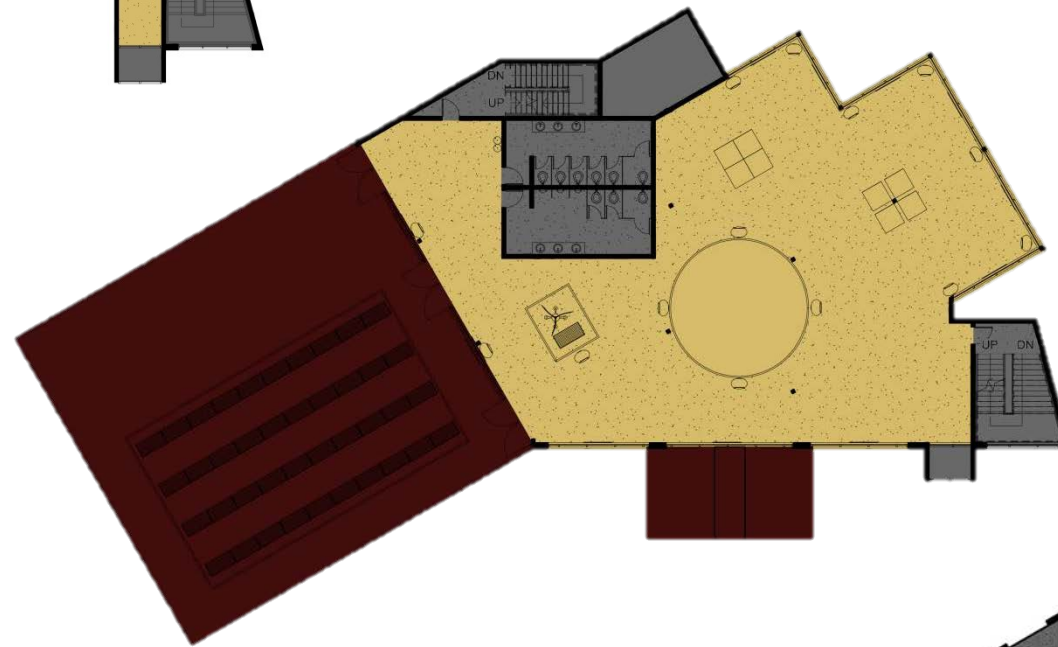
WATERFRONT

# Respect The *Point*

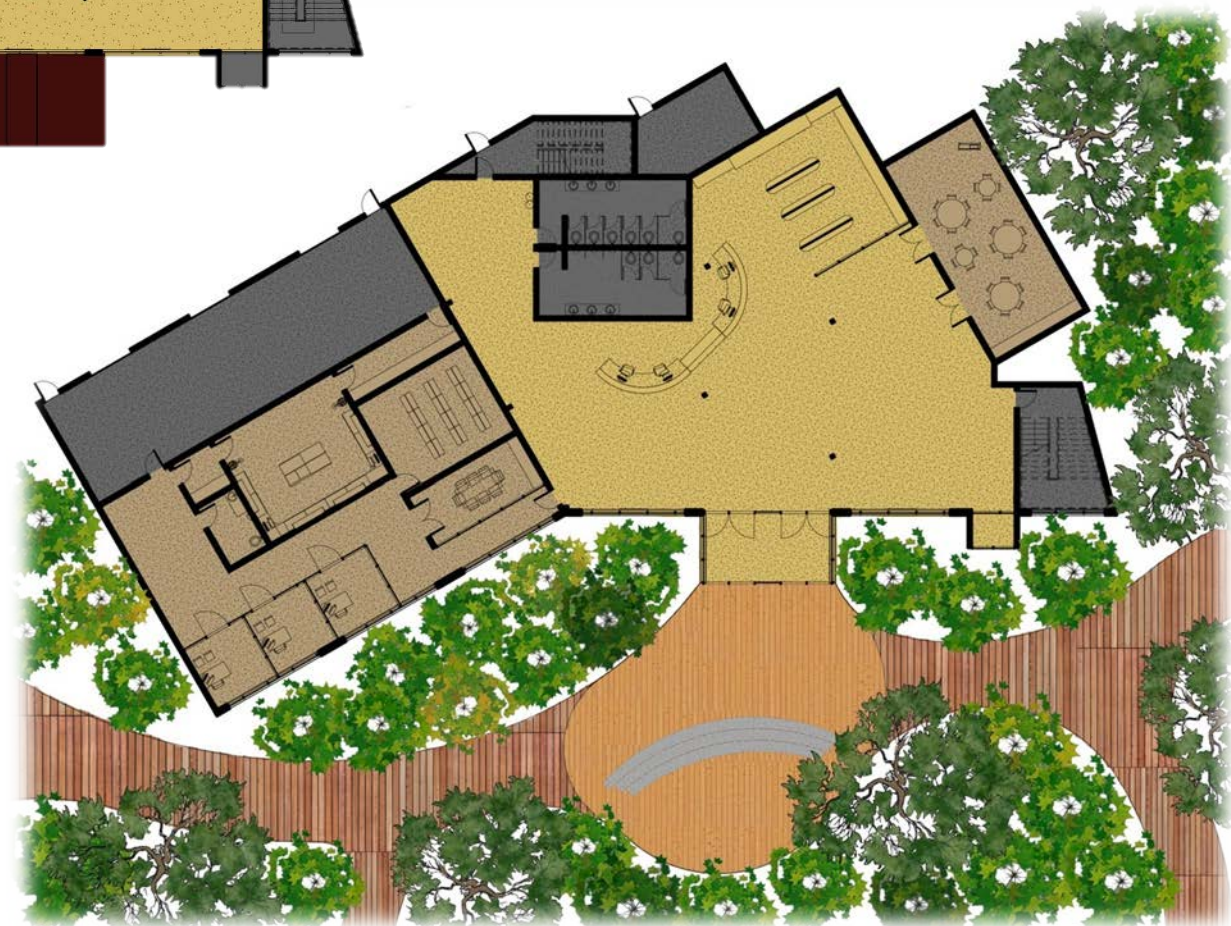
- Public Spaces
- Faculty/Staff Spaces
- Outdoor Roof Patios
- Support Spaces



Third Floor Plan



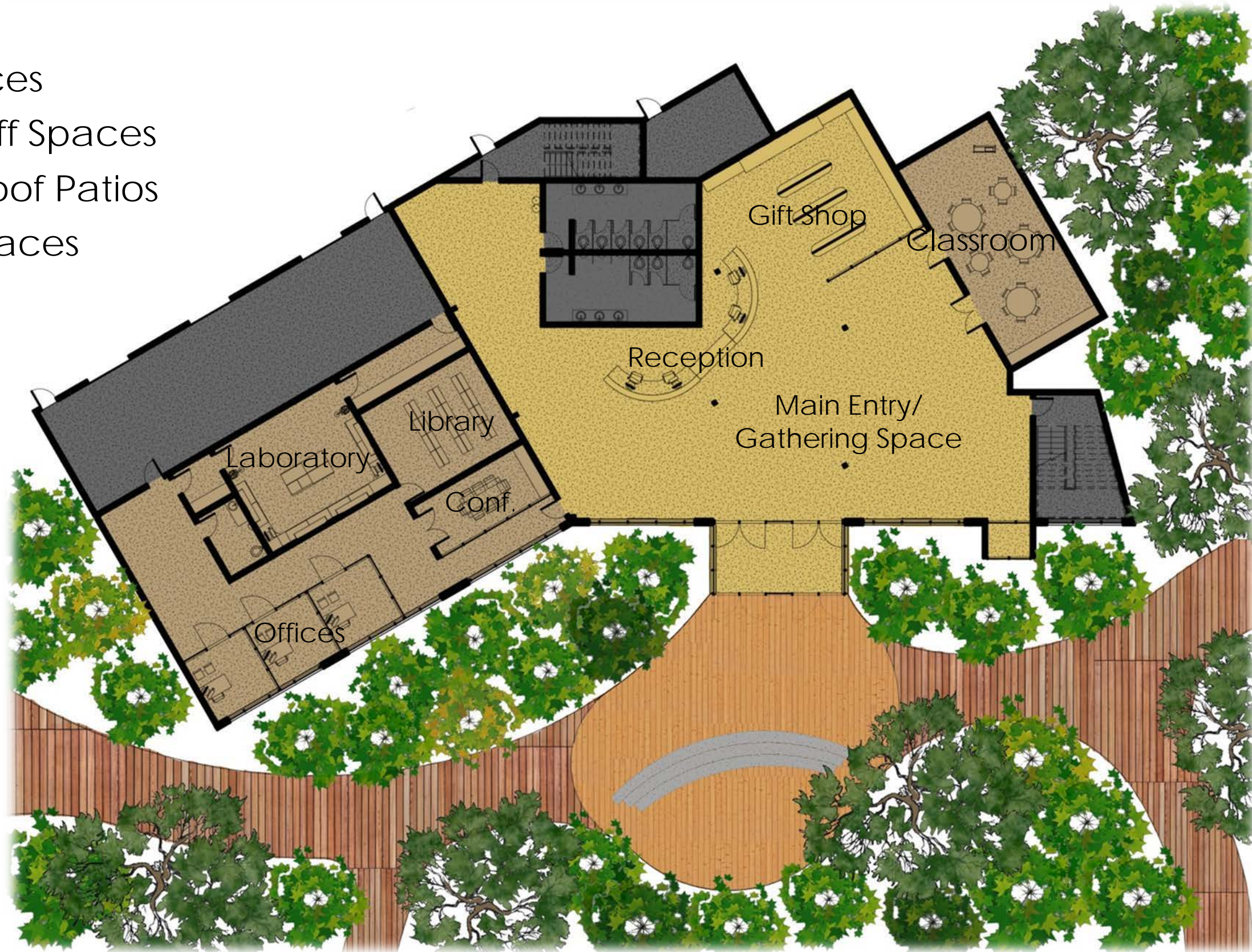
Second Floor Plan



First Floor Plan

# Respect The *Point*

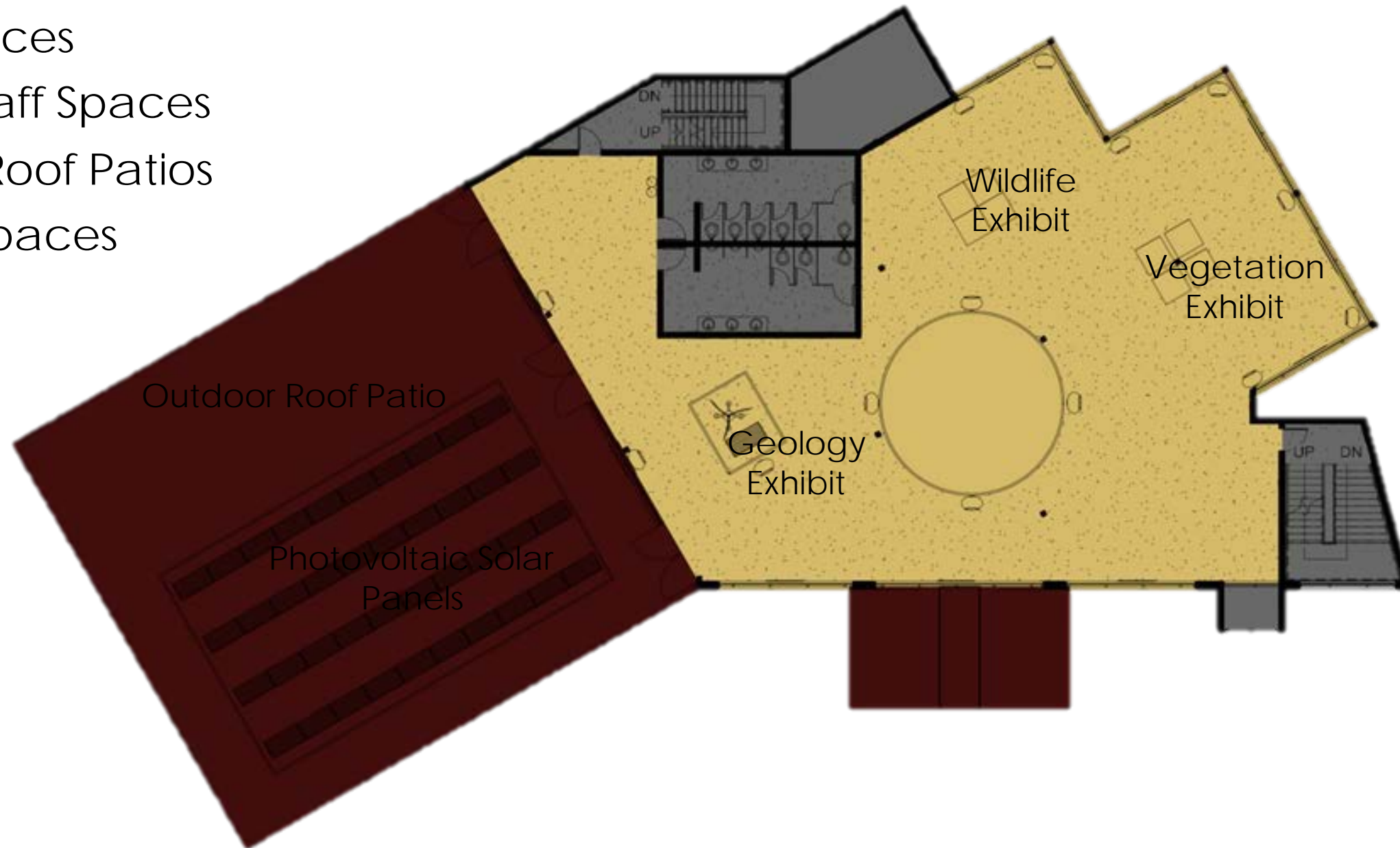
- Public Spaces
- Faculty/Staff Spaces
- Outdoor Roof Patios
- Support Spaces



First Floor Plan

# Respect The *Point*

- Public Spaces
- Faculty/Staff Spaces
- Outdoor Roof Patios
- Support Spaces

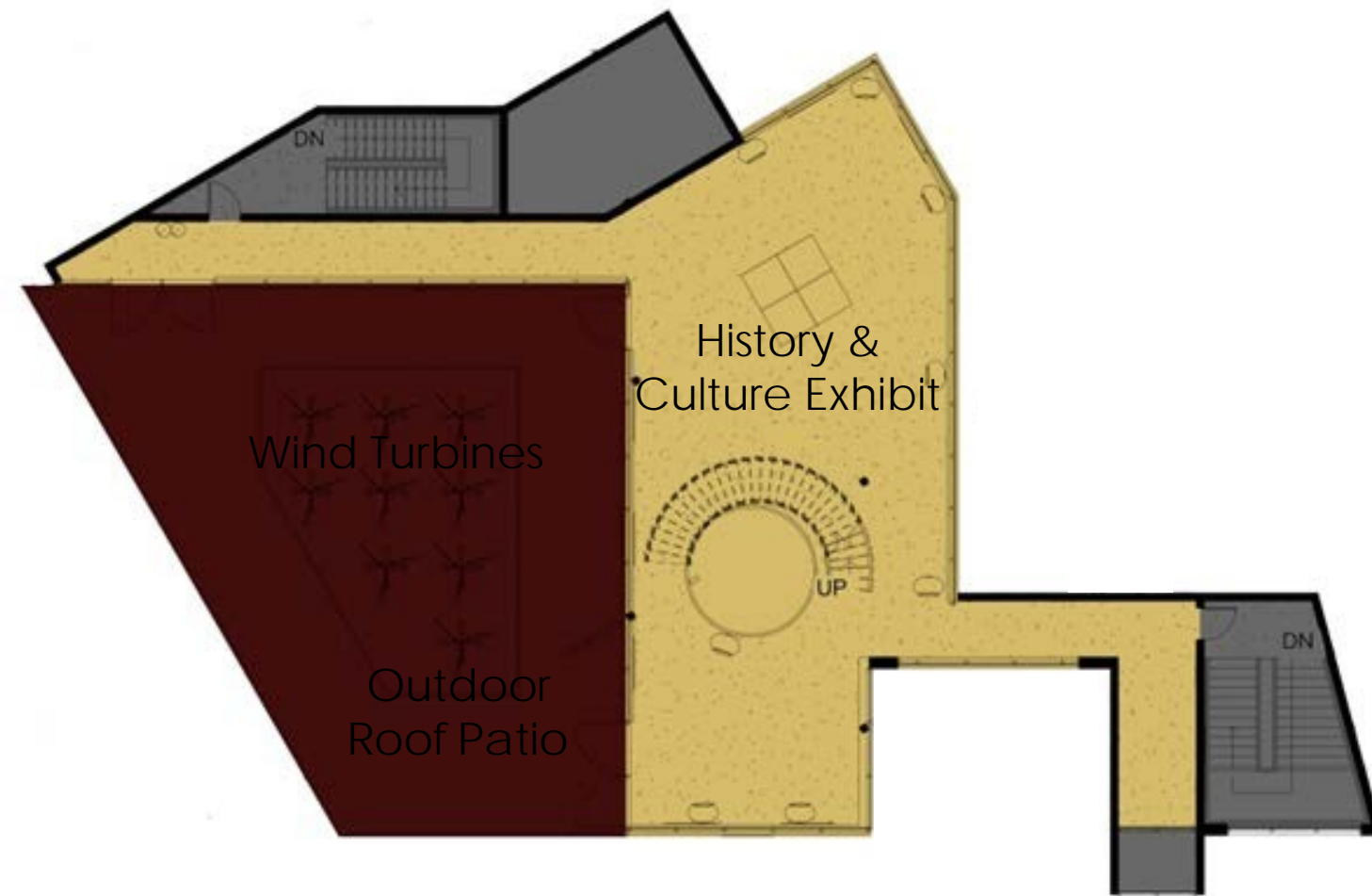


Second Floor Plan



# Respect The *Point*

- Public Spaces
- Faculty/Staff Spaces
- Outdoor Roof Patios
- Support Spaces



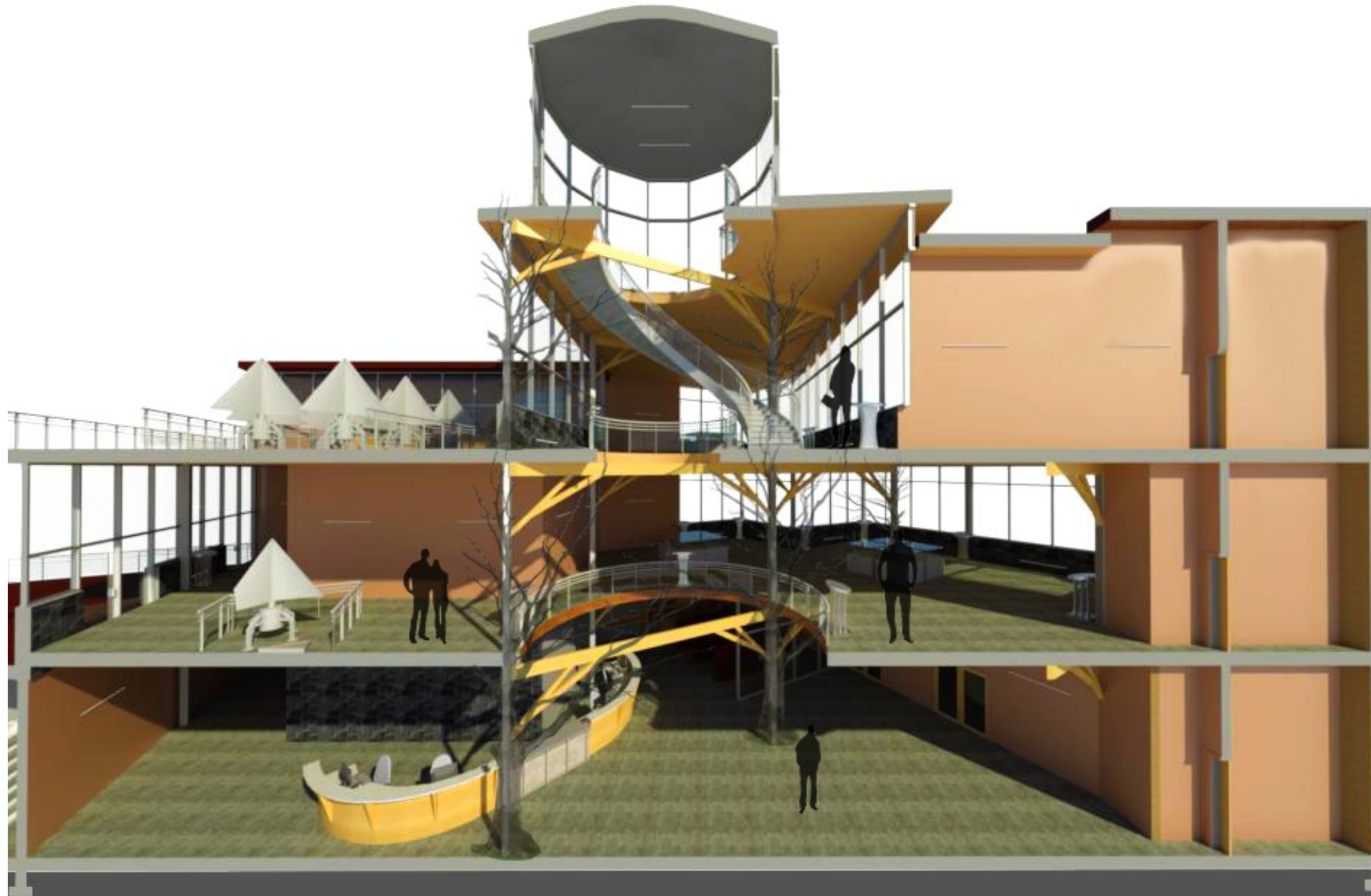
Third Floor Plan



# Understand The *Point*

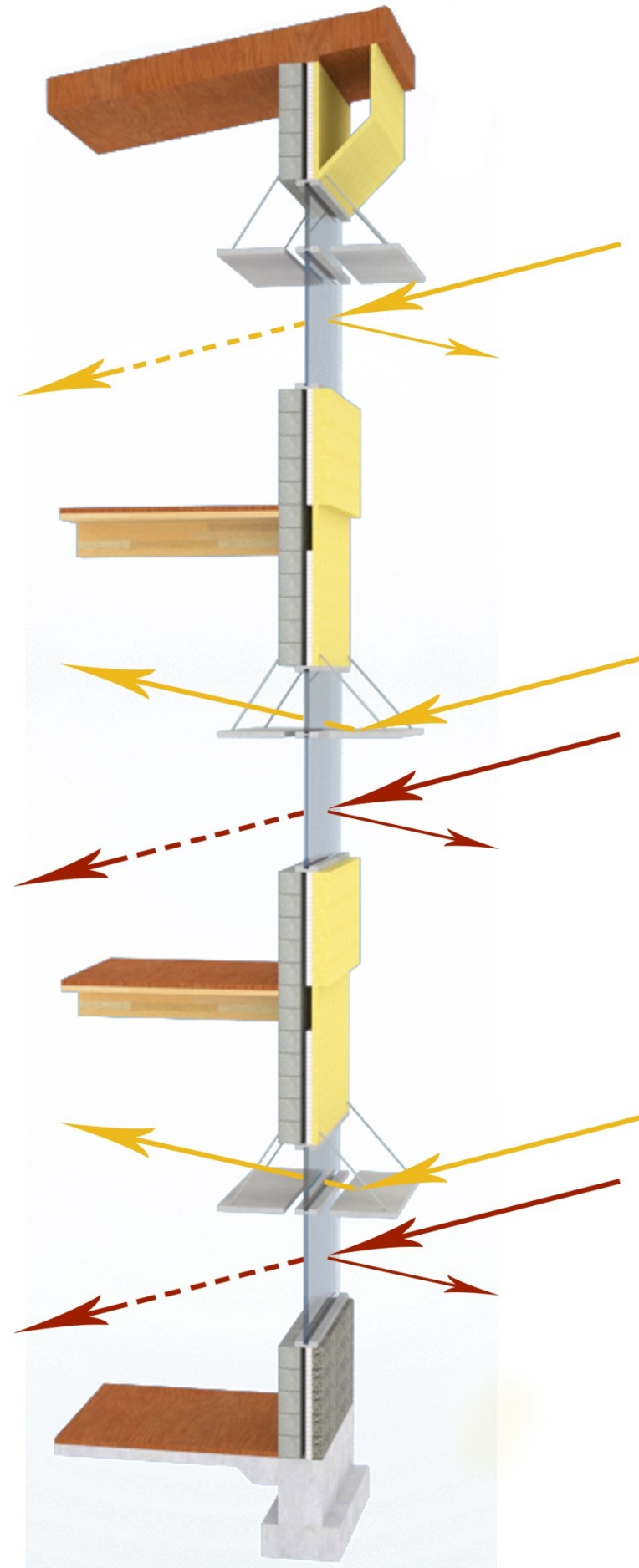


# Understand The *Point*





# Preserve The *Point*



## SAGE GLASS APPLICATION

- SUNLIGHT
- SUN HEAT

Glass gives occupants of a building a visual connection to the outdoors. With natural light filling a space, people are happier, healthier, and more productive. When the heat and glare from the sun are prevented, the quality of life of those occupants increases.

Sage glass significantly reduces the energy consumption needed to heat and cool a building. This product truly gives occupants individual control over how they want a space to feel. The glass can become as opaque or transparent as the users want/need, which creates a space that can be bright and vibrant or dark and intimate.



Photovoltaic Solar Panels



Wind Turbine



Birch Plywood Panels



# Encounter The *Point*

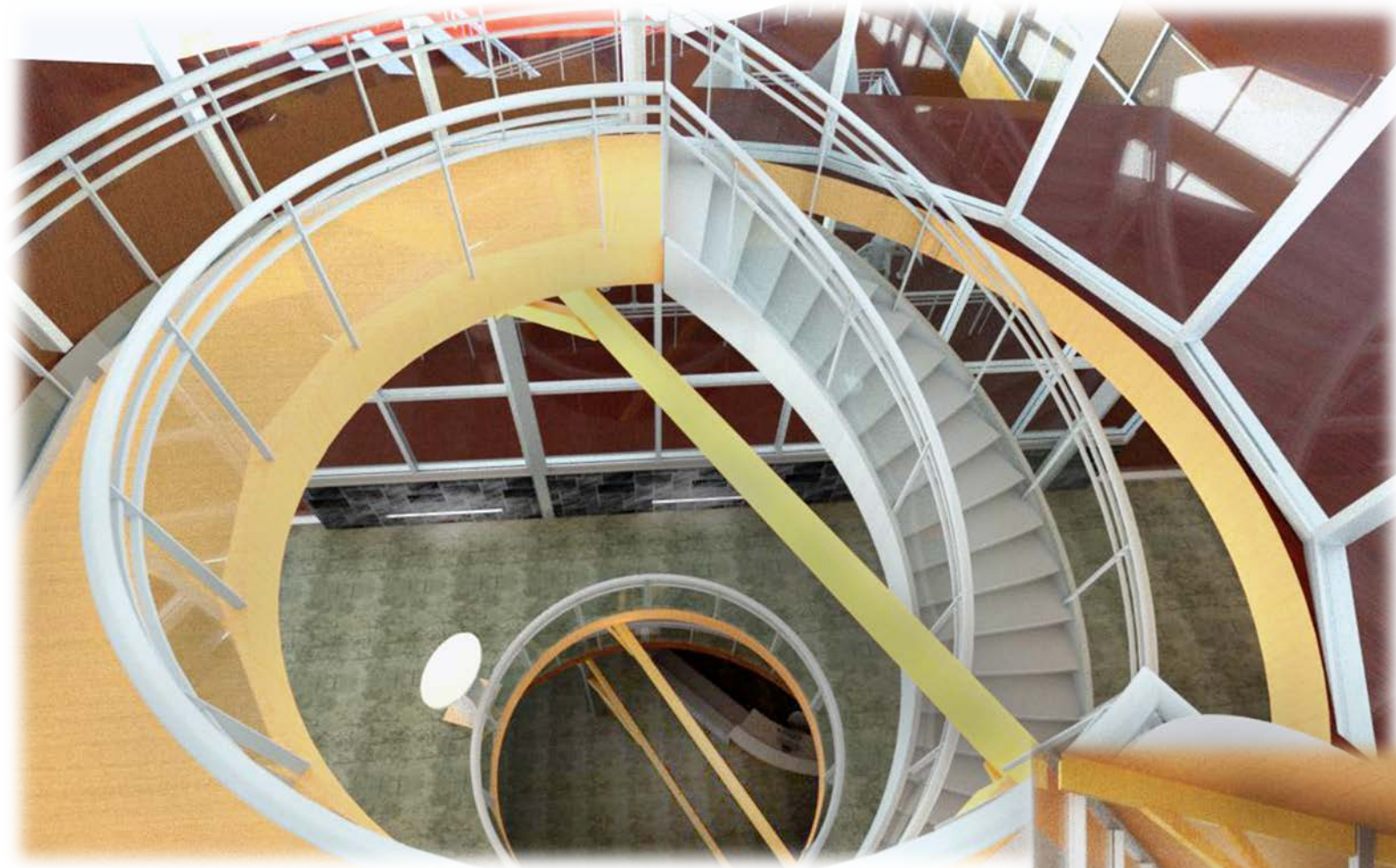


Second Floor Exhibit Space

First Floor Gathering Space



# Experience The *Point*



Looking Down Atrium

Third Floor Culture Exhibit



# Take Back The *Point*

Future



WISCONSIN

# That's The *Point*



Thank You  
Questions/Comments

