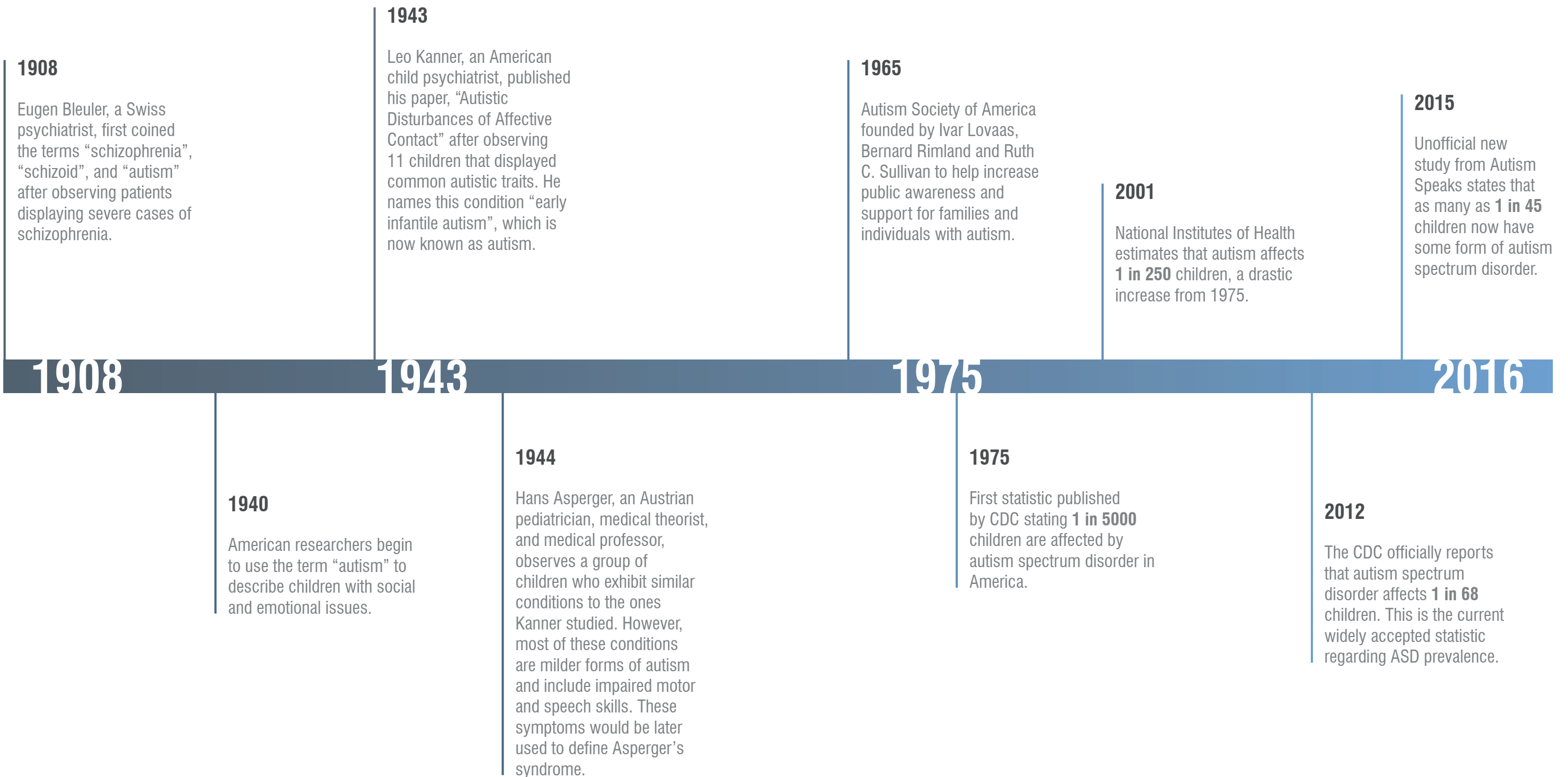


# A BRIEF HISTORY OF AUTISM SPECTRUM DISORDERS





**EAST TO SOUTH**



**SOUTH TO WEST**



**WEST TO NORTH**

*“HERE IS A TRUTH ABOUT CHILDREN WITH AUTISM: THEY GROW UP TO BECOME ADULTS WITH AUTISM. AND YET THE LIFE EXPECTANCY OF PEOPLE WITH AUTISM IS MORE OR LESS AVERAGE. HERE IS ANOTHER TRUTH, THEN, ABOUT CHILDREN WITH AUTISM: THEY CAN’T STAY AT HOME FOREVER.”*

- Michael Tortorello, *The Architecture of Autism*, The New York Times



**KAI MARKHAM**



**ERIN HORST**



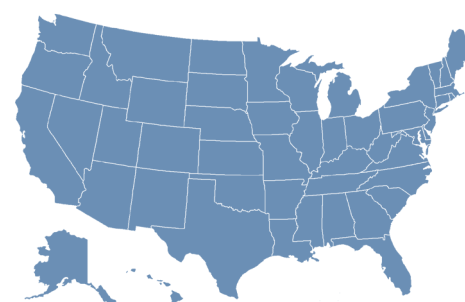
**JACOB BARNETT**



**MALCOLM FAIRWEATHER**

**500,000**

children with ASD will become adults within the next decade in the U.S.



**\$2.3 MILLION**

lifetime support costs for someone with autism verses \$1.4 million for someone unaffected.



# AIRMOUNT WOODS

**LOCATION:** Ramsey, New Jersey

**BUILD YEAR:** 2014

**SIZE:** 6,000 SF [ Eight 400 SF residencies ]

**COST:** \$2,800,000

**ARCHITECTS:** Virgona + Virgona Architects / James Virgona

**FEATURES:** Long-term housing, quiet rooms, eight bedrooms, common restrooms, common living spaces, passive and active outdoor recreation areas, community kitchen and dining areas, flexible spaces, and a connecting breezeway

**TAGS:** Community Living, Healthcare, Multifamily, Specialized Housing



# EDEN OUTREACH CENTER

**LOCATION:** Princeton, New Jersey

**BUILD YEAR:** 2011

**SIZE:** 38,300 SF [ 12,900 SF Renovation + 25,400 SF Addition ]

**COST:** \$8,000,000

**ARCHITECTS:** KSS Architects

**FEATURES:** Classrooms with kitchens, restrooms, offices, observation rooms, multipurpose room, gymnasium, weight room, occupational/physical therapy sensory room, vocational and educational centers, school store, butterfly-shaped roof



# SWEETWATER SPECTRUM COMMUNITY

**LOCATION:** Sonoma, California

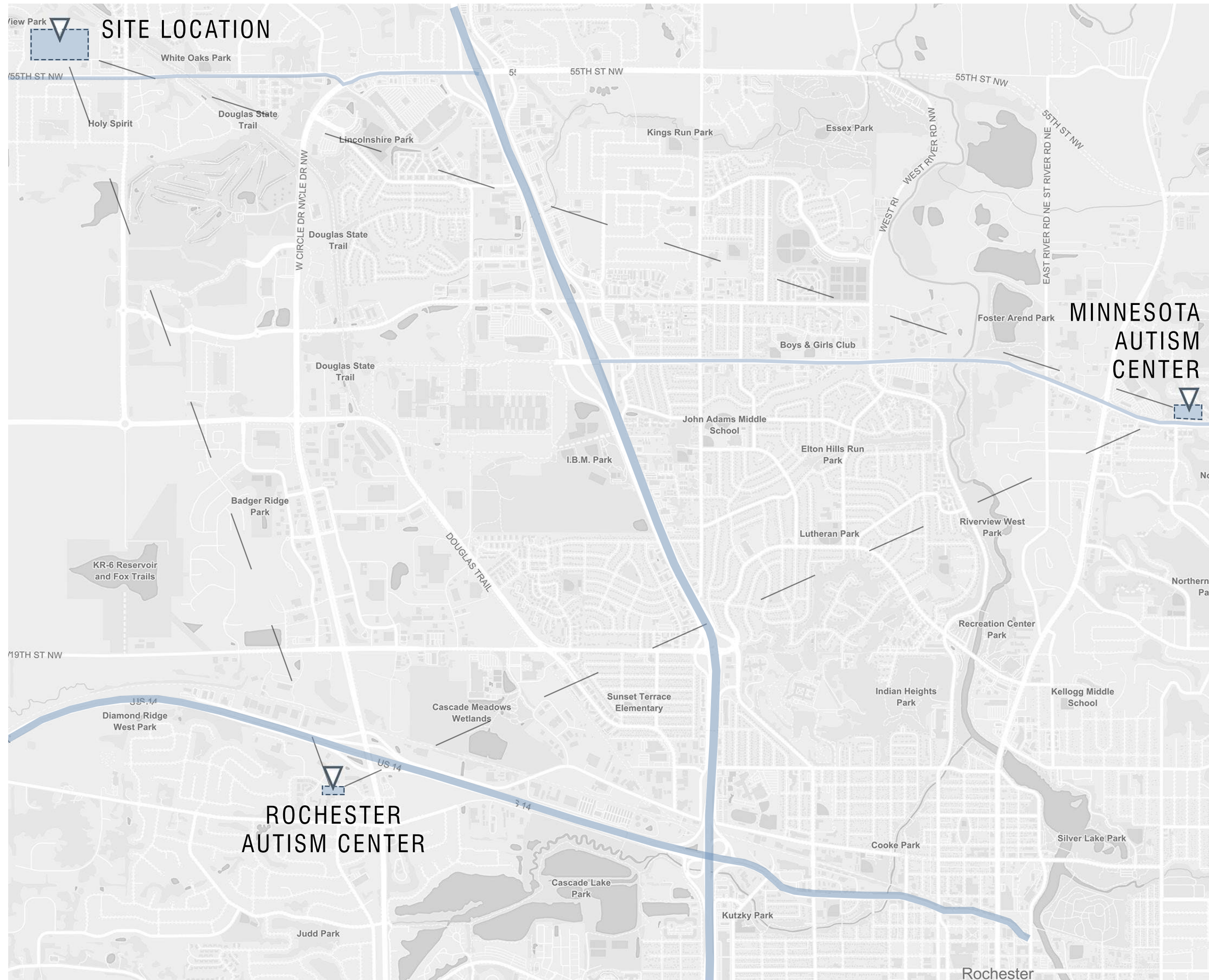
**BUILD YEAR:** 2013

**SIZE:** 16,315 SF [ Four 3,250 SF bedroom homes / 2,300 SF community center ]

**COST:** \$6,884,896

**ARCHITECTS:** Leddy Maytum Stacy Architects

**FEATURES:** Permanent housing, staff offices, restrooms, utility rooms, storage, community center, fitness center, library, teaching kitchen, pantry, therapy pool and spa, hammock garden, urban farm, orchard, and greenhouse

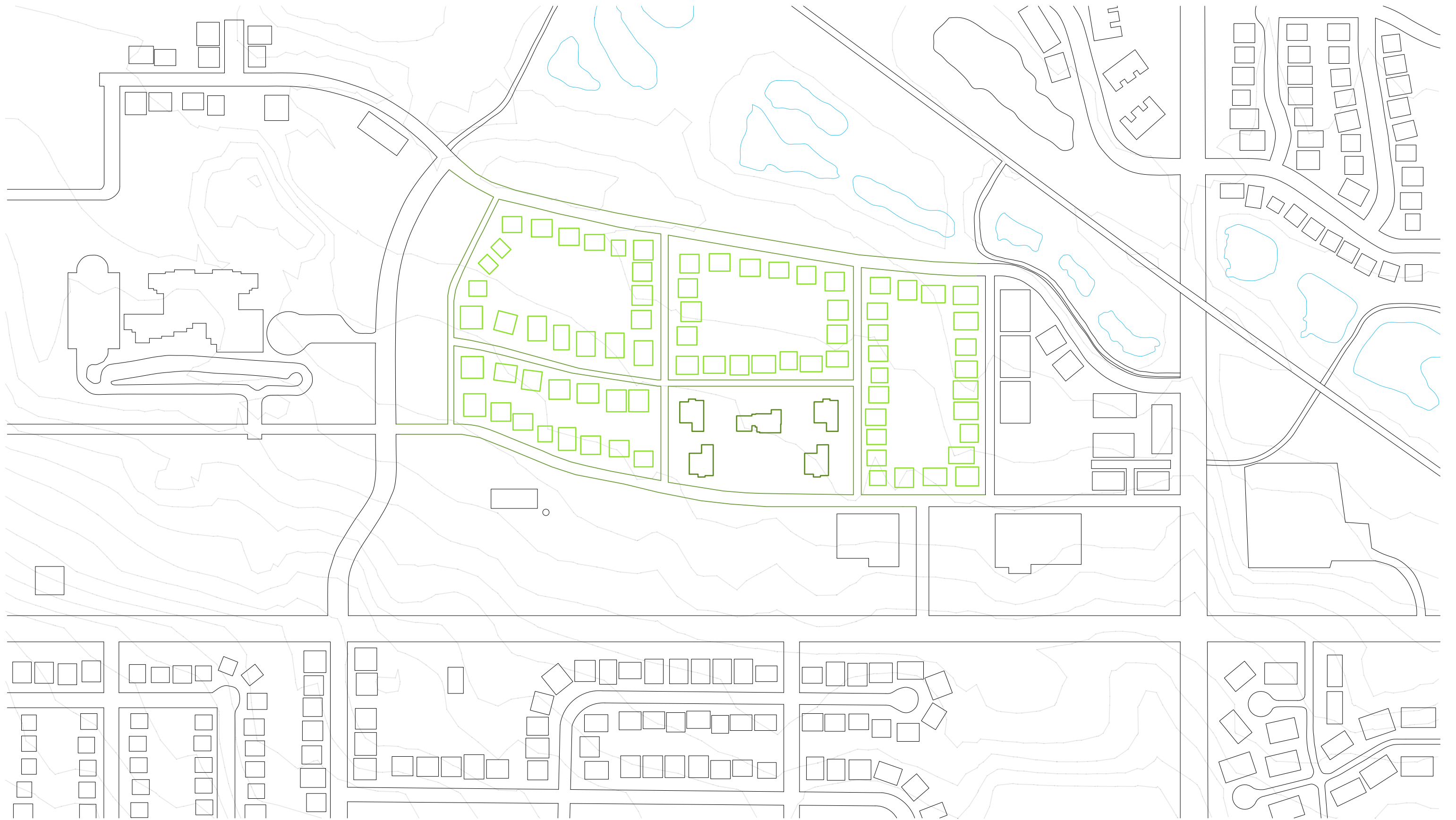


# SITE LOCATION

MINNESOTA  
AUTISM  
CENTER

ROCHESTER  
AUTISM CENTER

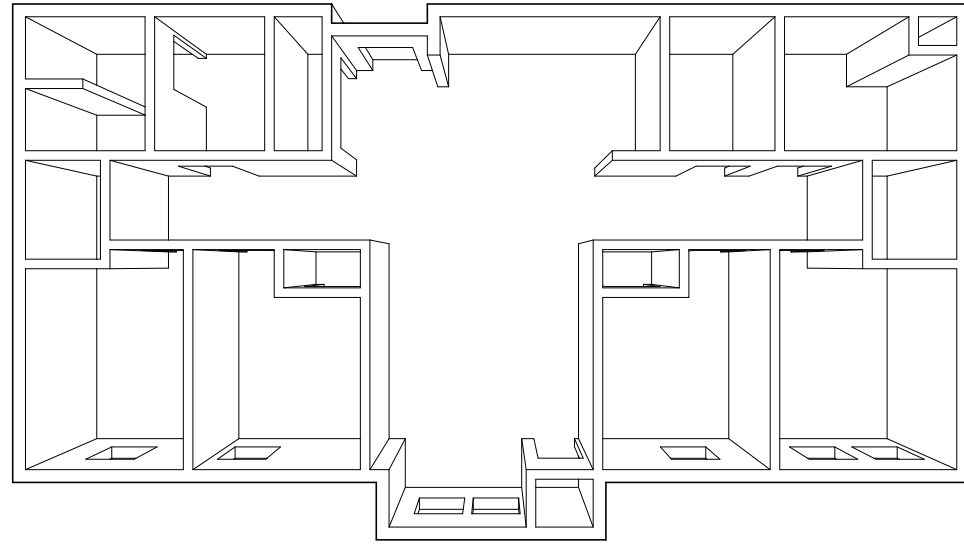
Rochester



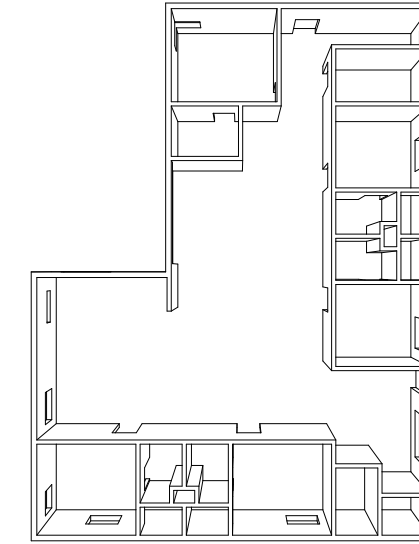
**POTENTIAL SITE DEVELOPMENT**

# CITYSCAPES STUDY - 4 BEDROOM - 1,250 SQ FT

# DRAFT FLOOR PLAN - 4 BEDROOMS - 2,560 SQ FT

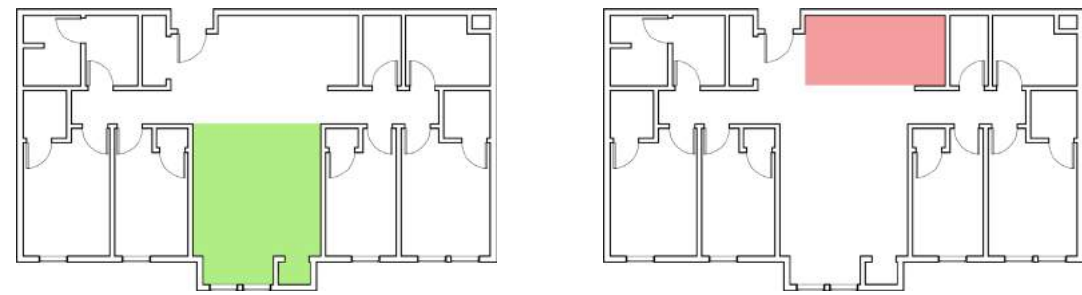


## SPACE COMPARISON

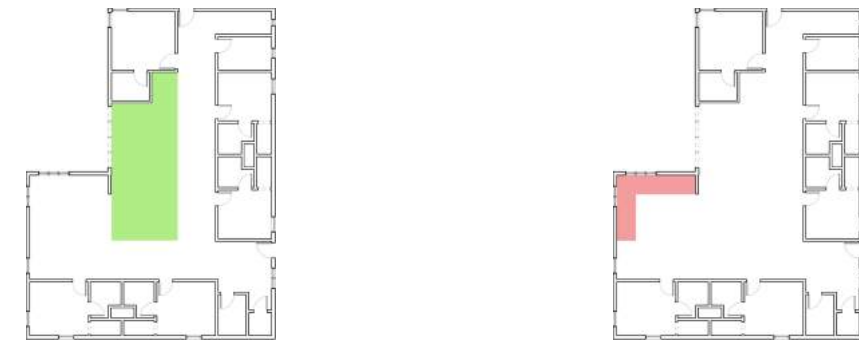
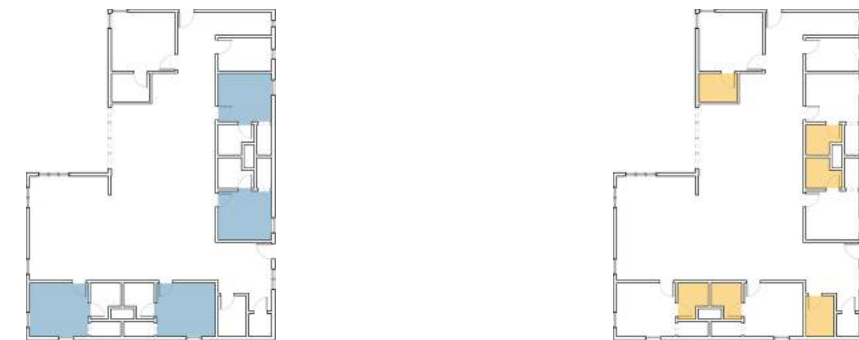


## SPATIAL ORGANIZATION STUDY

-  BEDROOMS
-  BATHROOMS
-  COMMON SPACE
-  KITCHEN



## ASD DESIGN CONSIDERATIONS





**COMMUNITY CENTER - COMMON SPACE**

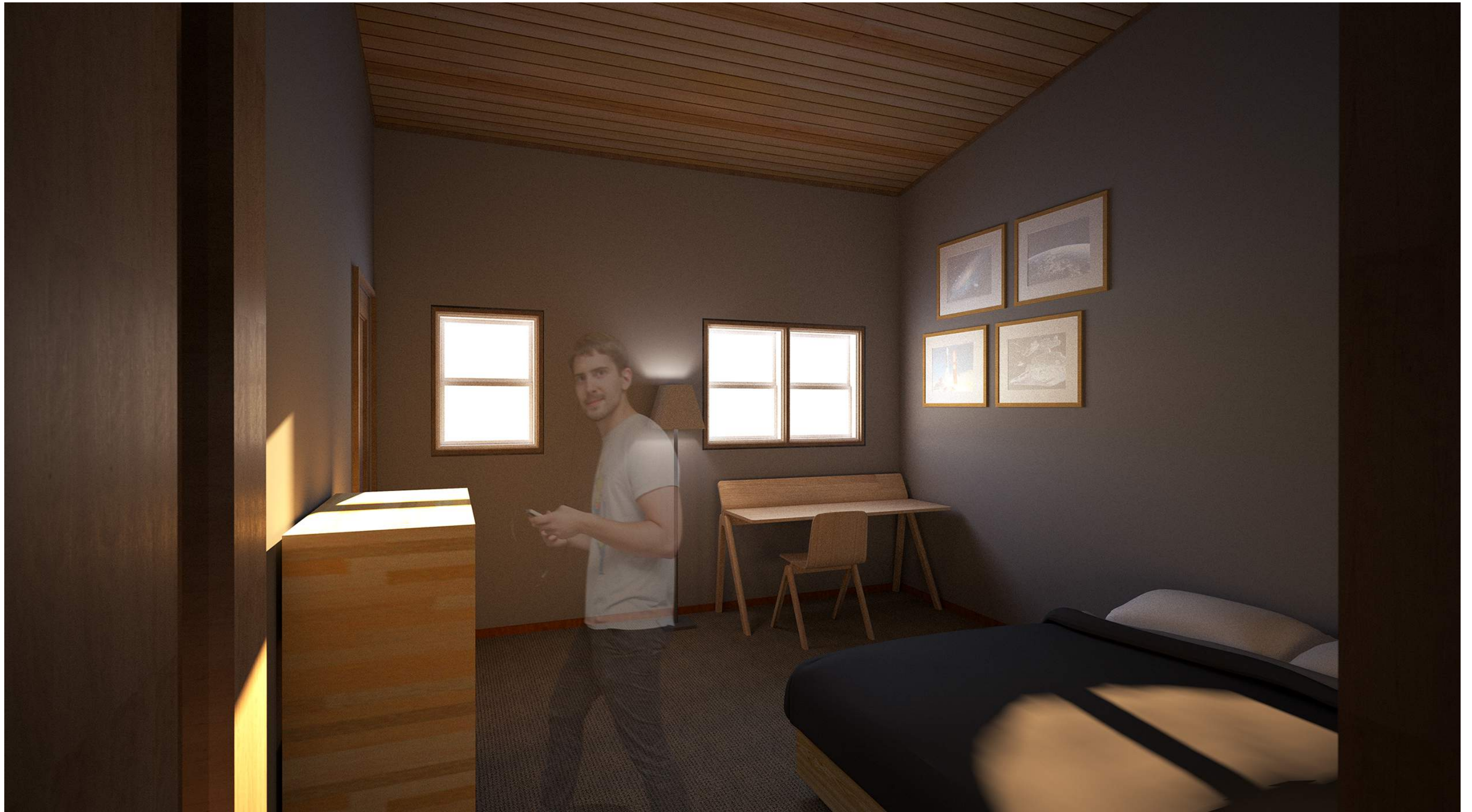




**COMMUNITY CENTER - EXERCISE SPACE**

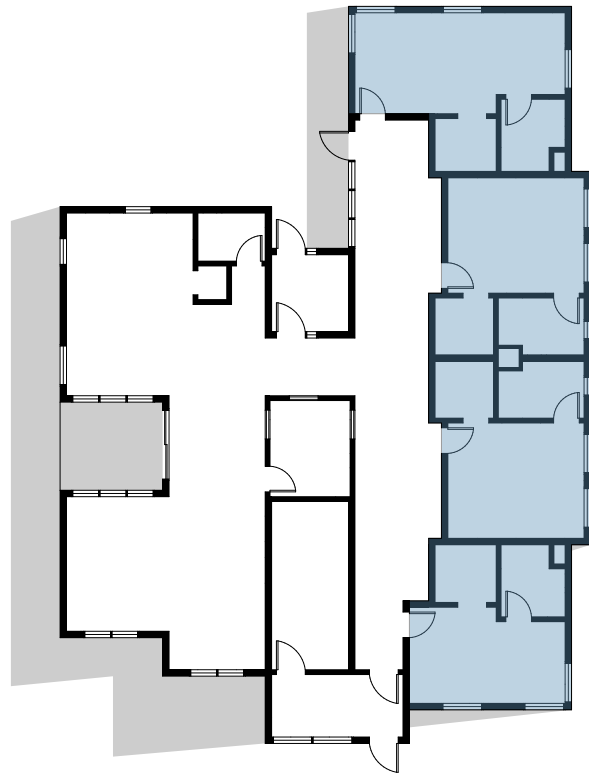


**RESIDENTIAL - TRANSITION SPACE**



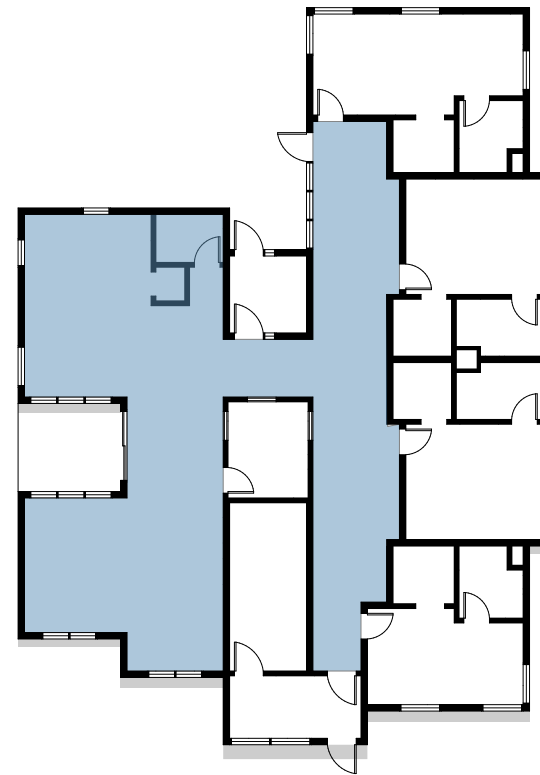
**RESIDENTIAL - BEDROOM LAYOUT**

# MOVEMENT PATTERNS DURING THE DAY



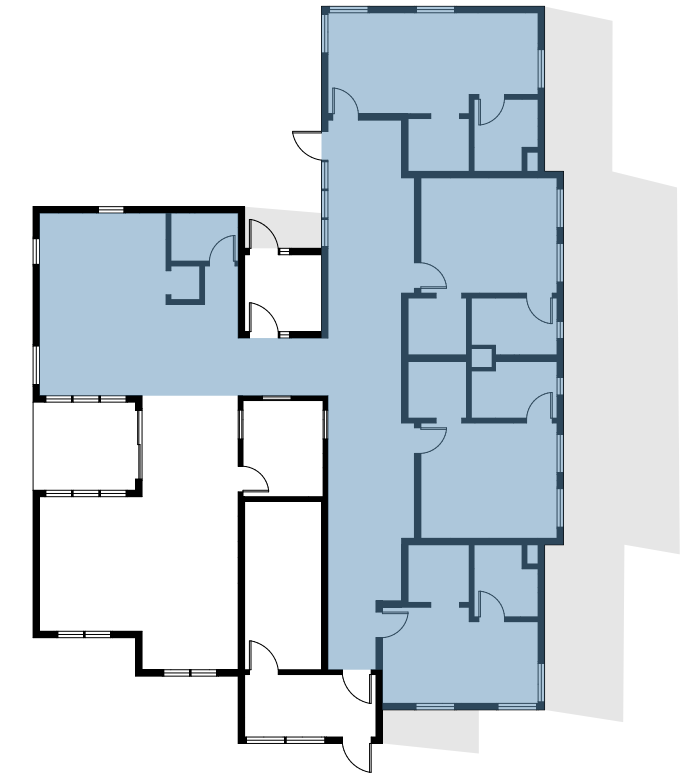
## MORNING HOURS

Users are able to establish a more natural, daily rhythm and routine that takes advantage of the sun cycles.



## AFTERNOON HOURS

As the sun reaches its highest point in the day, users are able to utilize the more active spaces without relying on the need for artificial lighting.



## EVENING HOURS

As the day ends, users may move back towards the transitional and more private spaces, concluding their day with the rhythm of the sun.