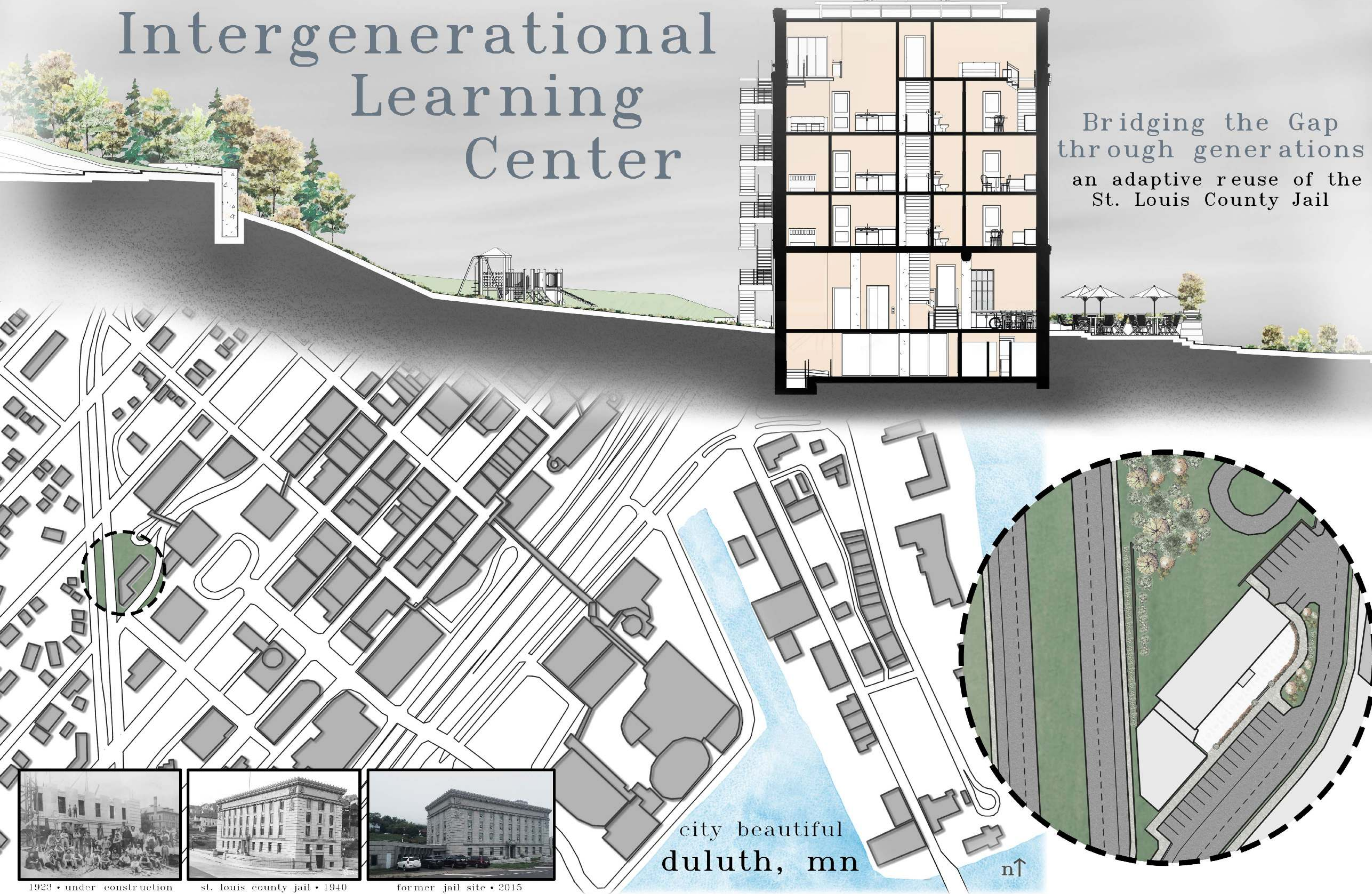


# Intergenerational Learning Center

Bridging the Gap through generations  
an adaptive reuse of the St. Louis County Jail



the future

the past

- gathering space
- apartment lofts

fifth floor

- lofted apartment units

fourth floor

- apartment units

third floor

- apartment units
- preschool classrooms

second floor

- inter generational learning center
- staff offices
- coffee bar
- outdoor space
- gathering area

first floor

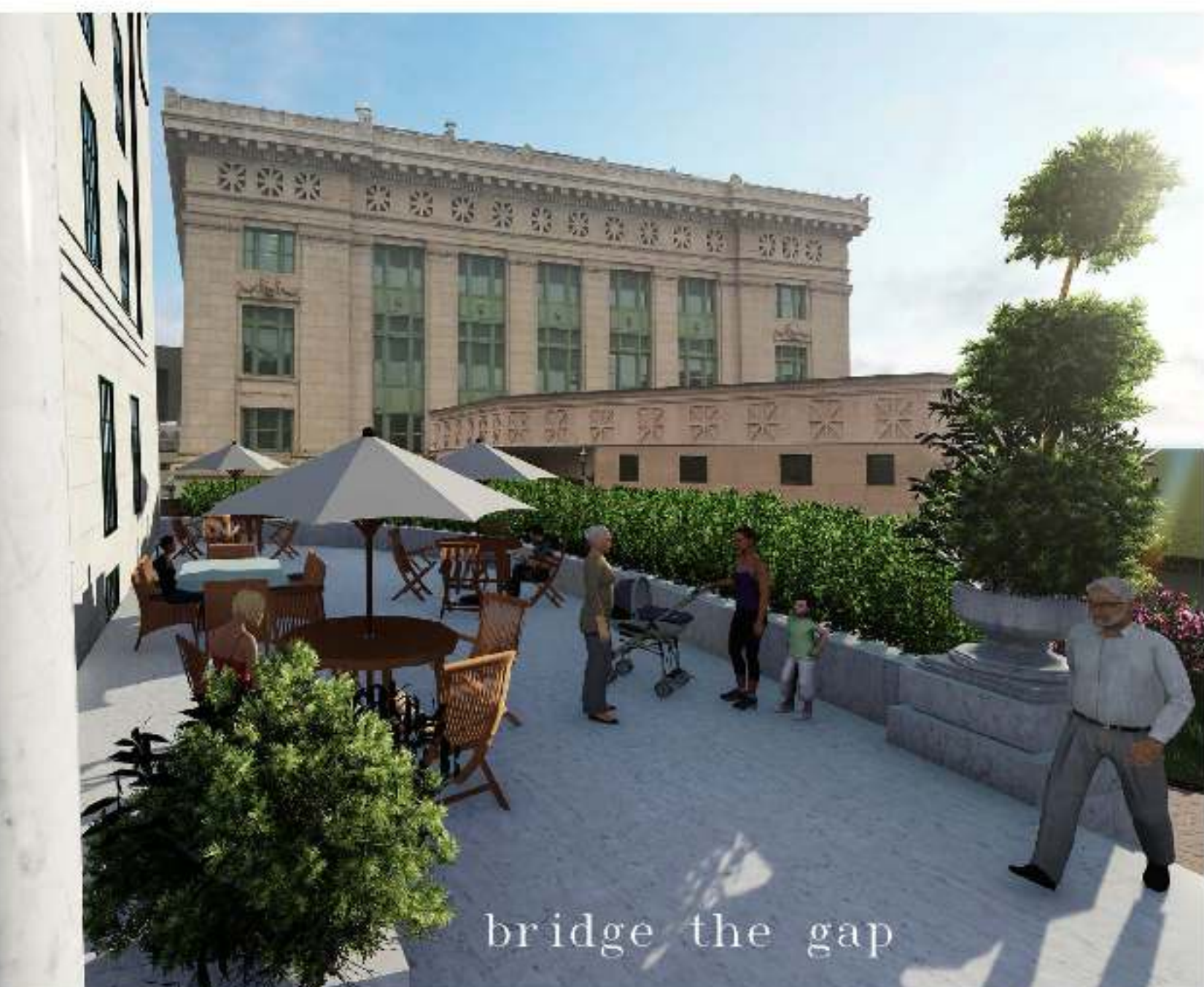
- therapy · exercise
- mechanical
- storage
- laundry

basement

This thesis explores how preschoolers and the elderly interact and learn from one another and how this type of bond can rise above differences in age and ability.

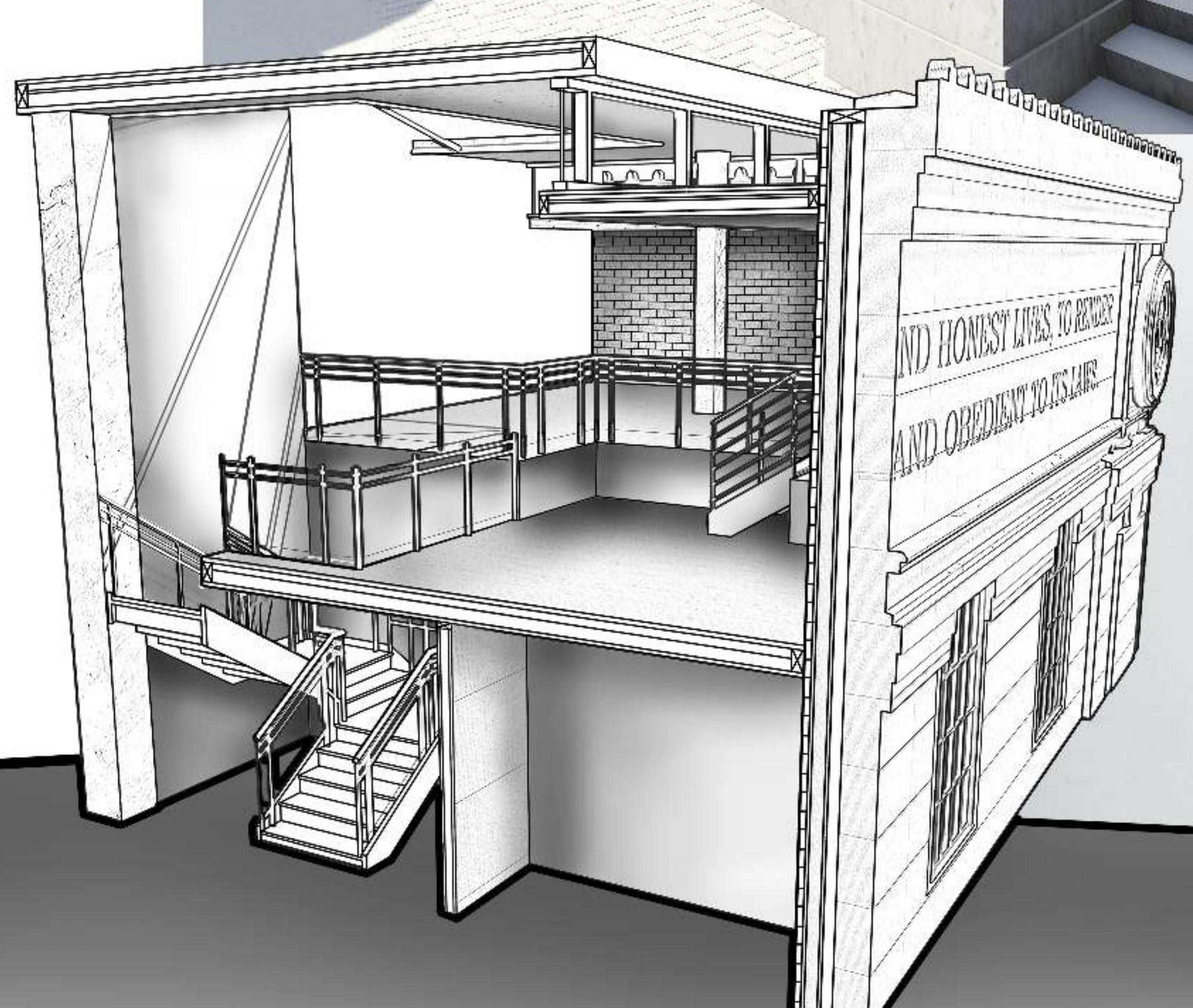
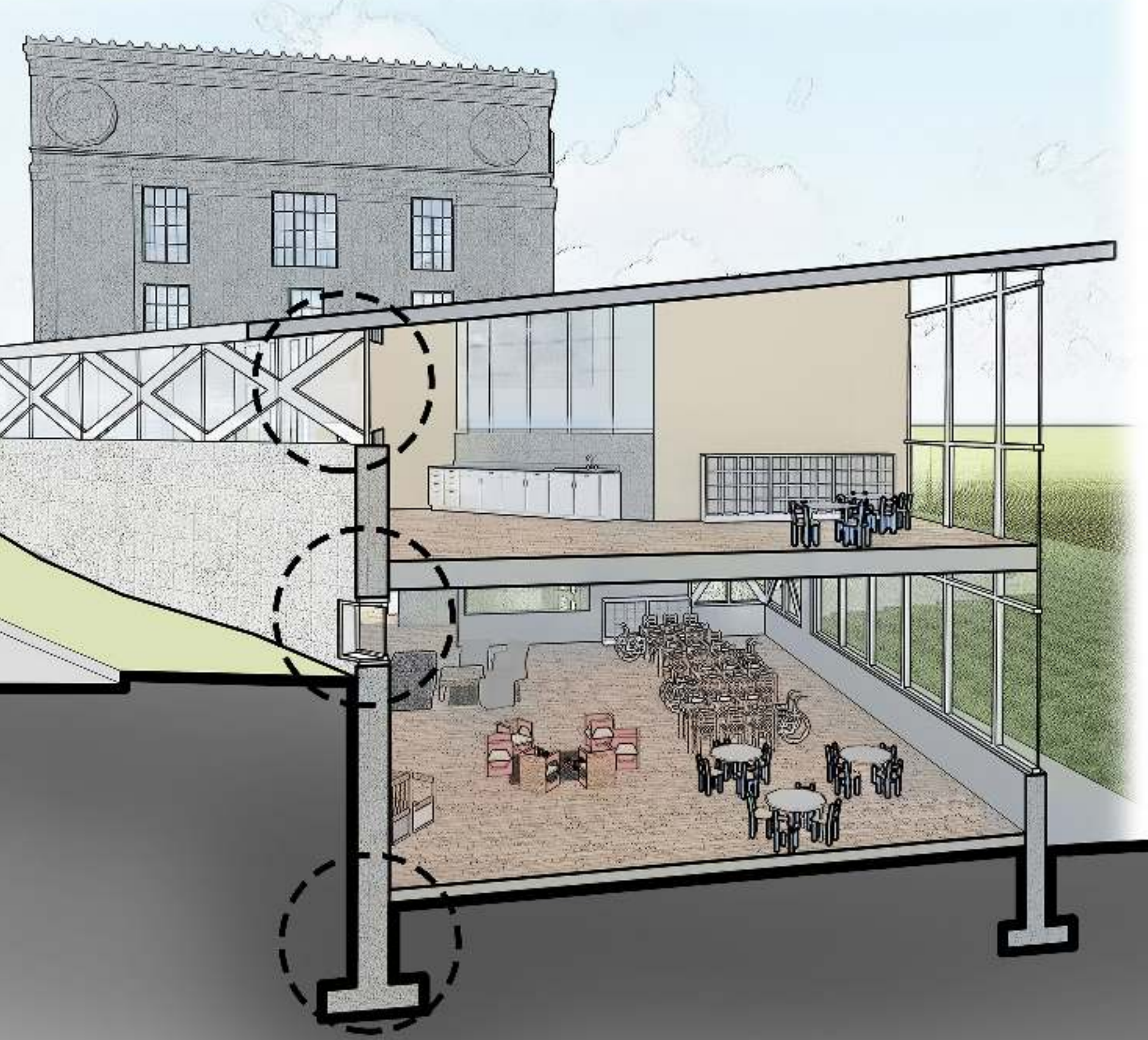
Examining how generationally segregated we are as a society and working to bring that back together within a historically preserved building generates a significant portion of this design exploration. The unique architectural features of the jail bring life and spirit to the building program and create stimulating and engaging environments in a former place of punishment.

The ultimate objective of this design thesis is to implement a program that repositions the building socially from a vacant reminder of trouble into a place people are compelled to be a part of and create a common ground.



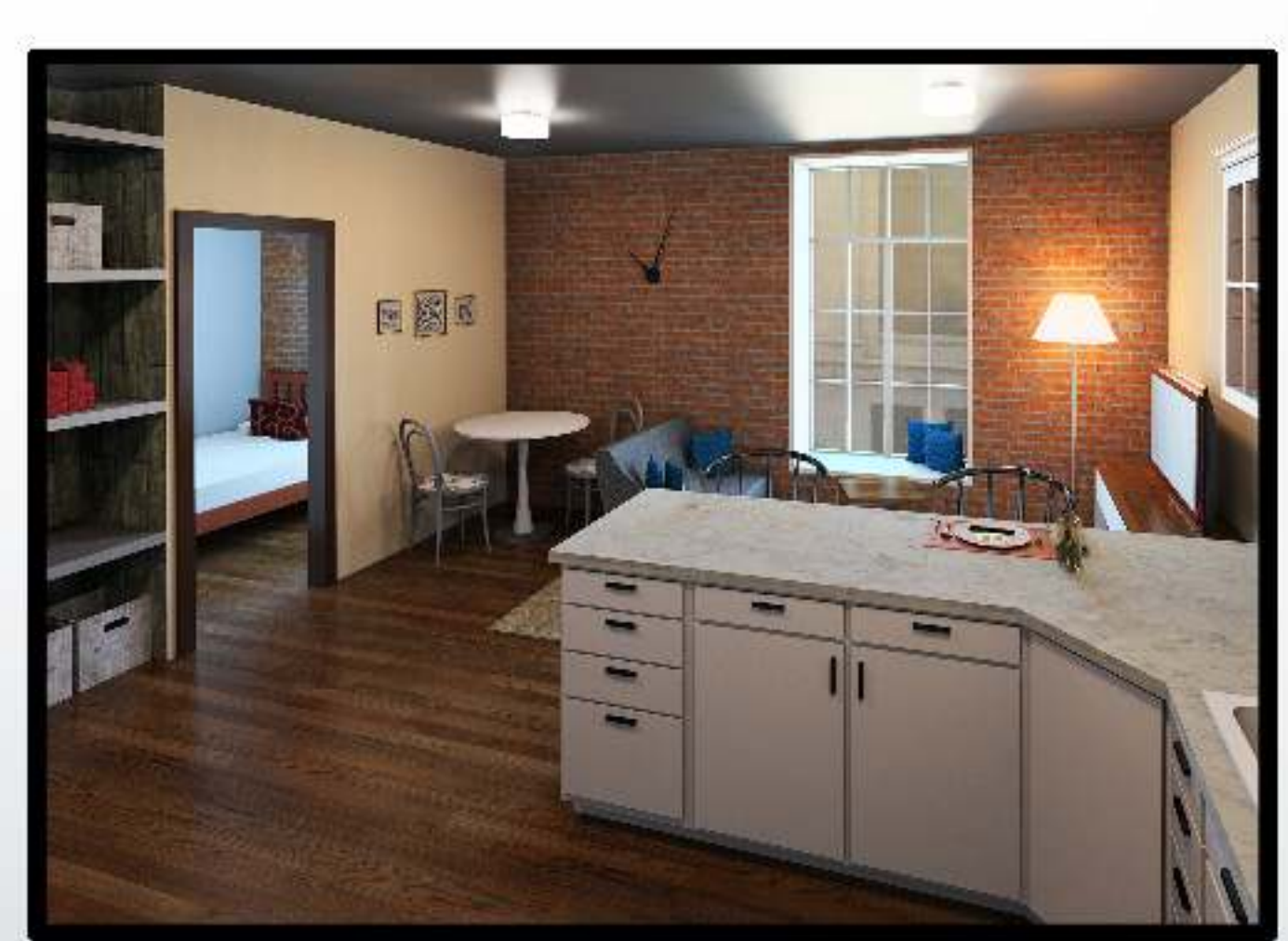
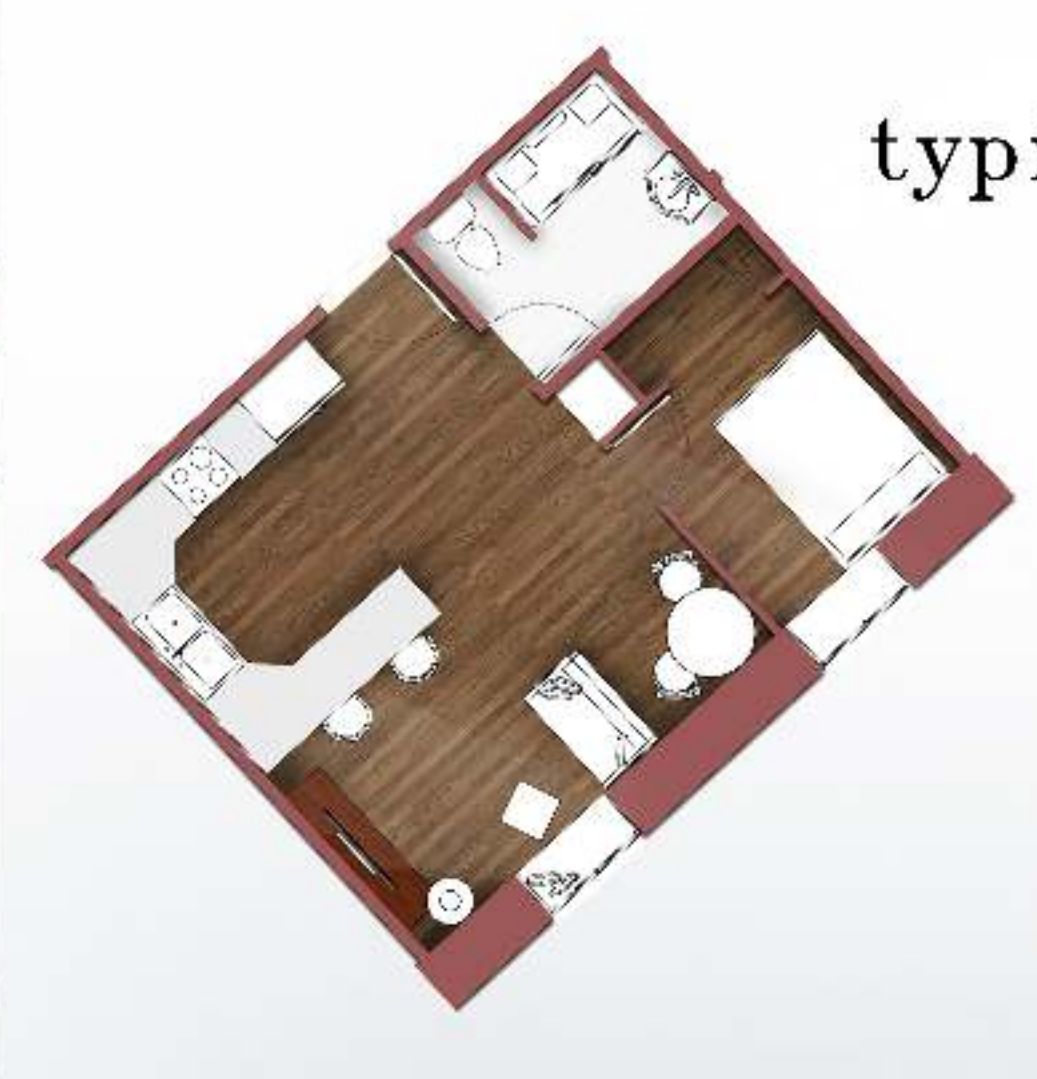
Common Ground  
Alexandra Hirslein  
Arch 772 Design Thesis  
Steve Martens  
Revit - Autocad - Lumion - Photoshop

- cpdm waterproofing membrane
- rigid insulation
- steel decking
- gyp board ceiling
- curtain wall glazing panels
- structural trusses
- window sill
- sill plate
- stone tile
- sheathing
- finished wood floor
- flashing
- gyp board ceiling
- insulated glass unit
- insulated precast concrete wall
- cpdm waterproofing membrane
- thermal insulation
- drainage medium
- drain tile
- 2" shim
- insulation cap
- cpdm waterproofing membrane
- finished wood floor
- 8" concrete slab
- 2" rigid insulation
- 12" concrete block foundation
- 12" concrete footing



typical living environment

lofted living environment



With neither their pasts nor futures in common, the relationships between the young children and the elderly residents exist entirely in the present.

