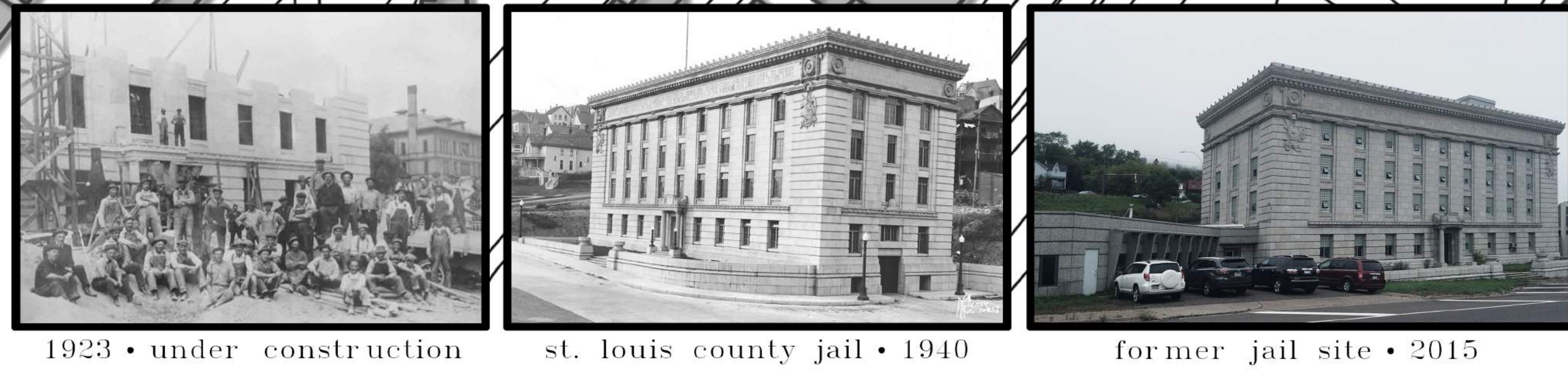
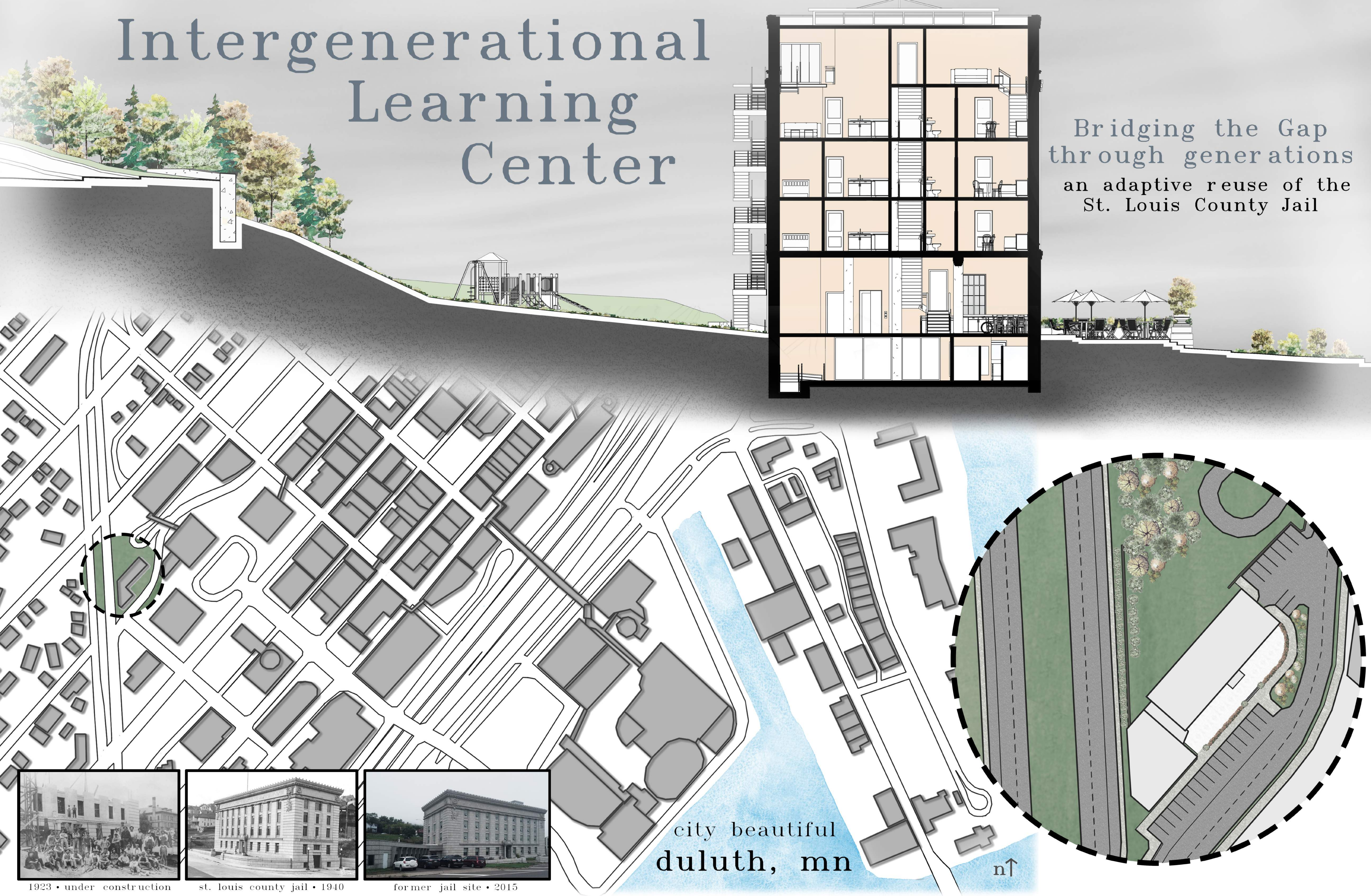


# Intergenerational Learning Center

Bridging the Gap through generations  
an adaptive reuse of the St. Louis County Jail



city beautiful  
duluth, mn

This thesis explores how preschoolers and the elderly interact and learn from one another and how this type of bond can rise above differences in age and ability.

Examining how generationally segregated we are as a society and working to bring that back together within a historically preserved building generates a significant portion of this design exploration. The unique architectural features of the jail bring life and spirit to the building program and create stimulating and engaging environments in a former place of punishment.

The ultimate objective of this design thesis is to implement a program that repositions the building socially from a vacant reminder of trouble into a place people are compelled to be a part of and create a common ground.



bridge the gap

revitalize the community



promote community connectivity



emphasize intergenerational interactions



evolve design standards