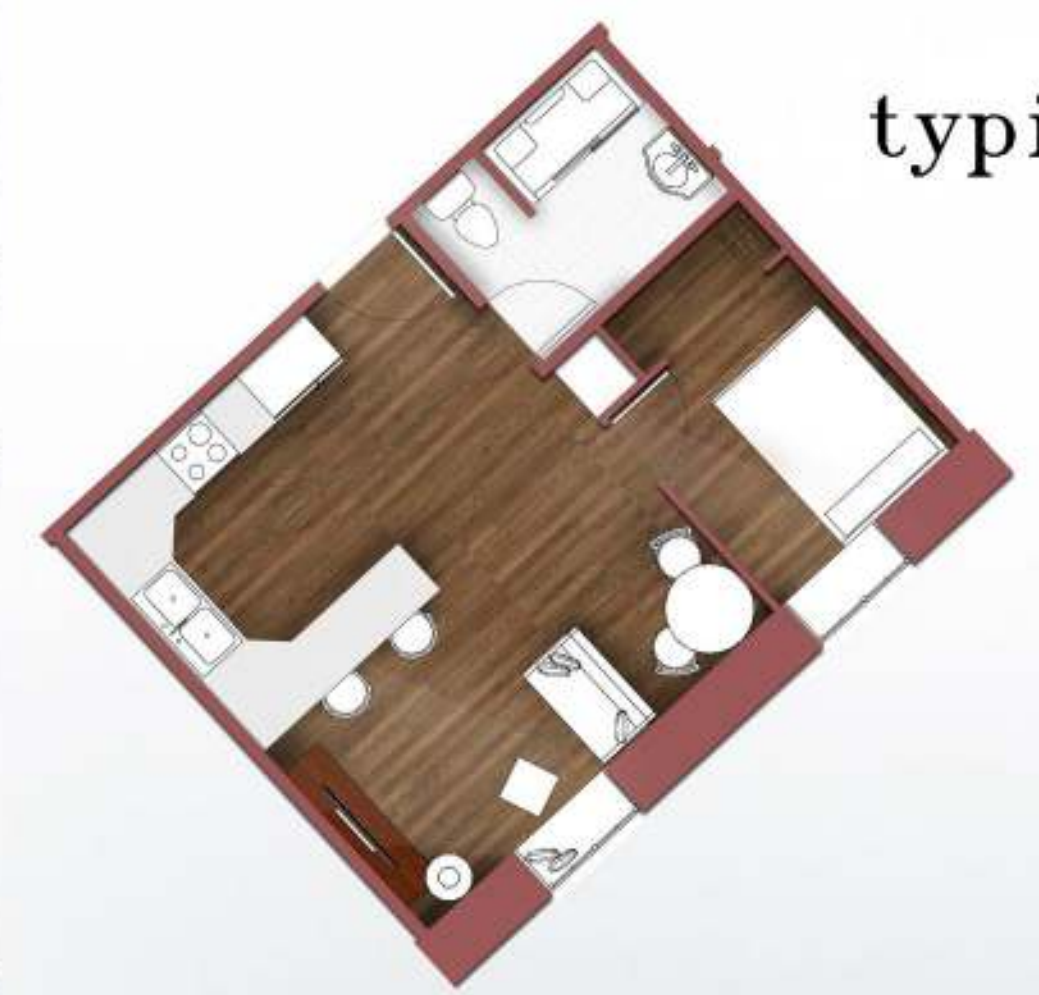


Common Ground
 Alexandra Hirstein
 Arch 772 Design Thesis
 Steve Martens
 Revit • Autocad • Lumion • Photoshop



typical living environment

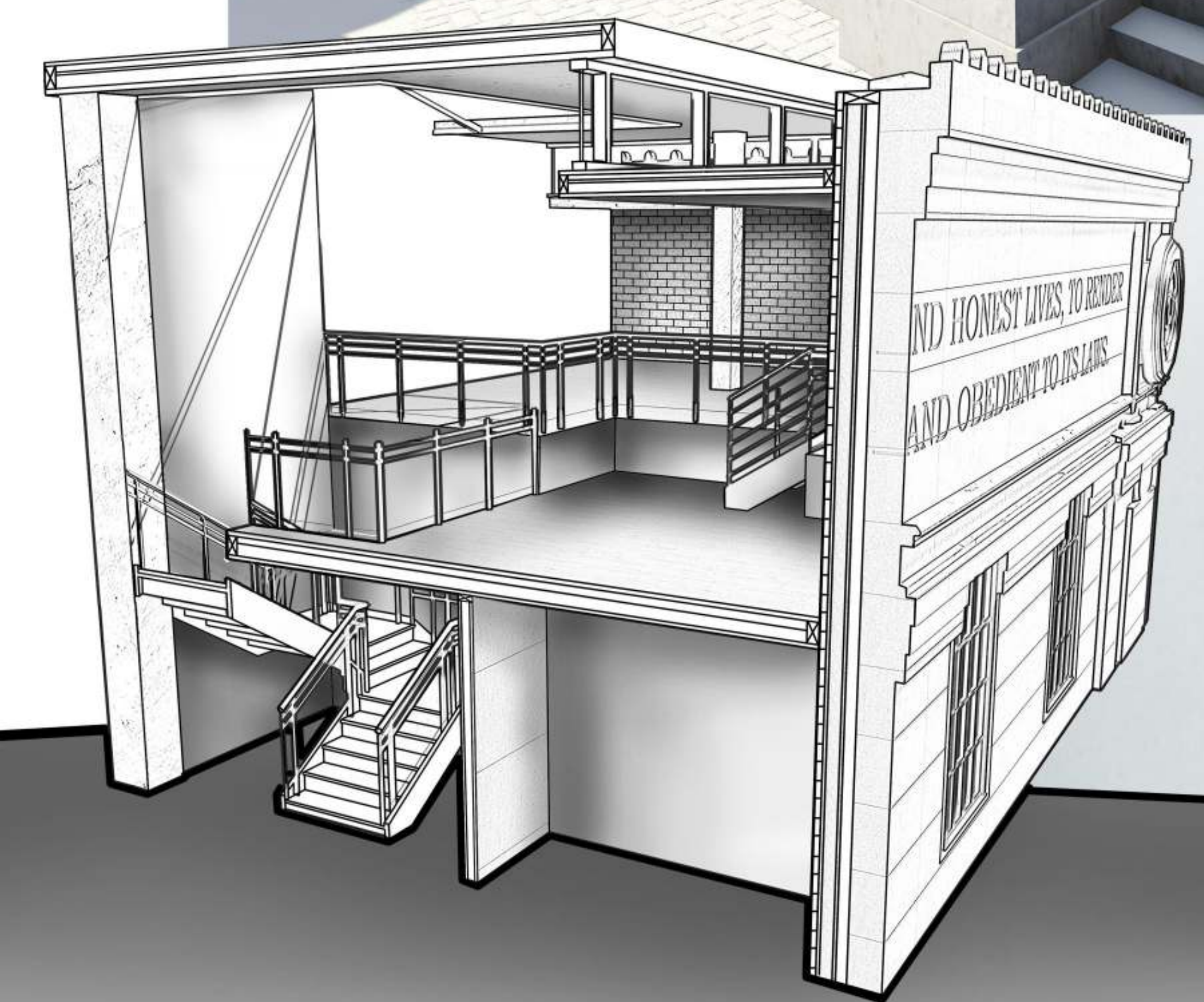
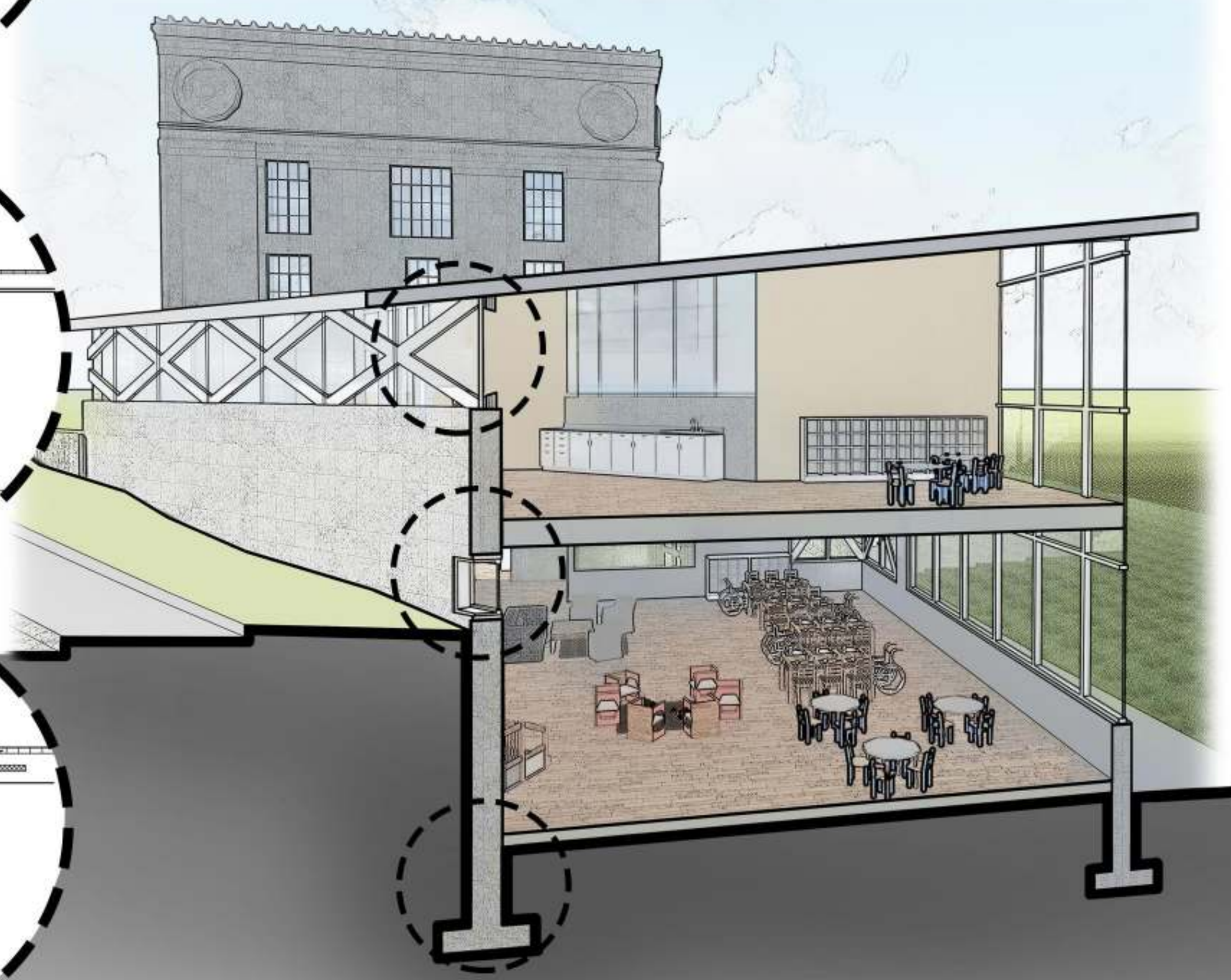


lofted living environment



With neither their pasts nor futures in common,
 the relationships between the young children and the
 elderly residents exist entirely in the present.

- epdm waterproofing membrane
- rigid insulation
- steel decking
- gyp board ceiling
- curtain wall glazing panels
- structural trusses
- window sill
- sill plate
- stone tile
- sheathing
- finished wood floor
- flashing
- gyp board ceiling
- insulated glass unit
- insulated precast concrete wall
- epdm waterproofing membrane
- thermal insulation
- drainage medium
- drain tile
- 2" shim
- insulation cap
- epdm waterproofing membrane
- finished wood floor
- 8" concrete slab
- 2" rigid insulation
- 12" concrete block foundation
- 12" concrete footing



formal entry • southeast



service entry • northeast