



THE AMERICAN CONVERSATION

AN ARCHITECTURAL DEBATE BETWEEN POLITICS AND THE PEOPLE



A black and white historical photograph showing several soldiers in a trench or on a battlefield. They are gathered around a flagpole, and one soldier is raising the American flag. The scene is set against a backdrop of a cloudy sky and a distant horizon. The image has a grainy, historical quality.

These American moments.
Moments that defined a nation.
Moments influenced by an idea.



1776

The Creation of America



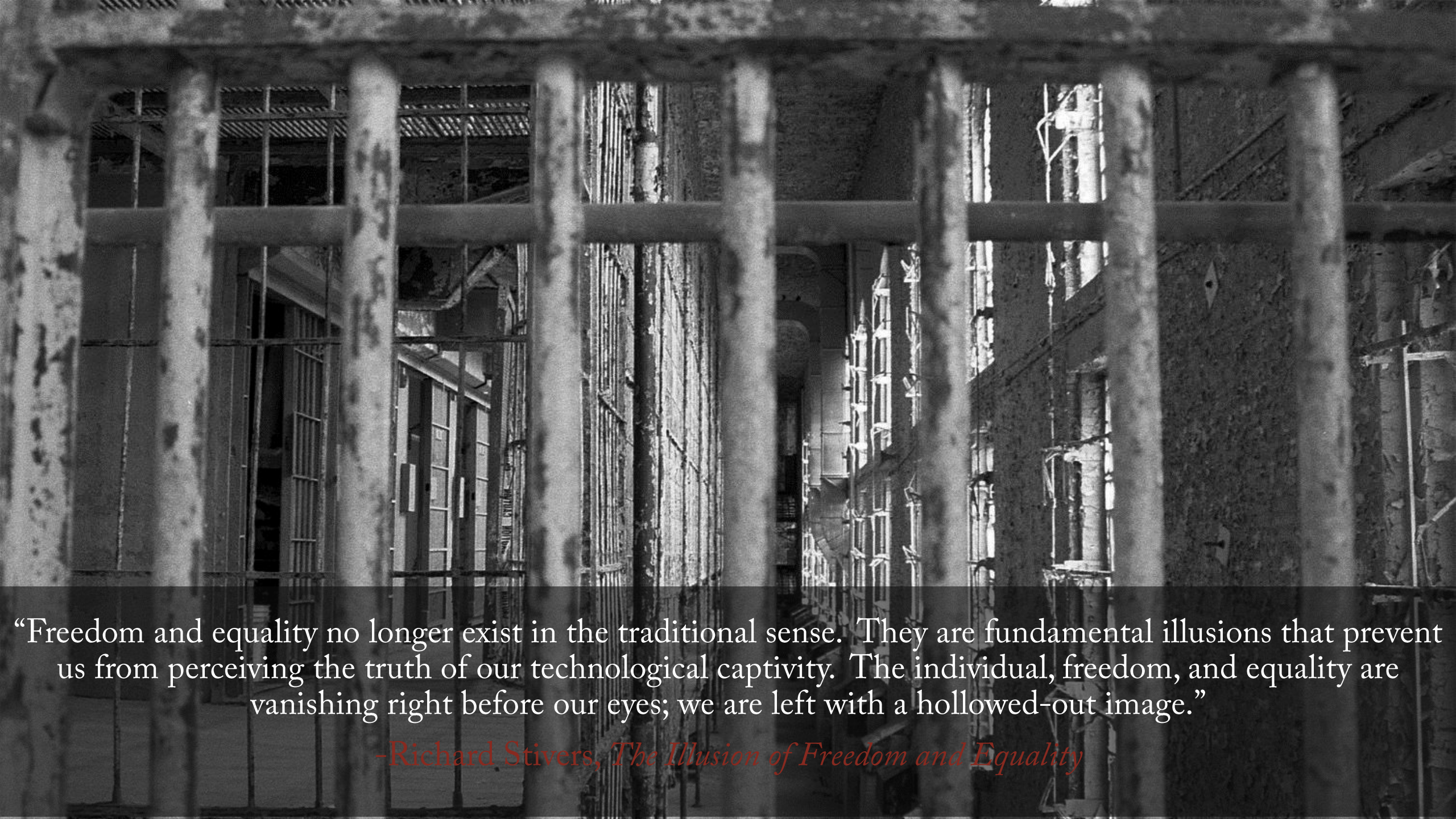
1860

The Preservation of America

TODAY

The image features a dark, textured background with a central horizontal band. The band is a dark, almost black color, providing a high-contrast area for the white text. The background outside the band has a mottled, aged appearance with shades of brown, tan, and dark blue, suggesting a worn or historical surface. The text is centered within the dark band and consists of three lines.

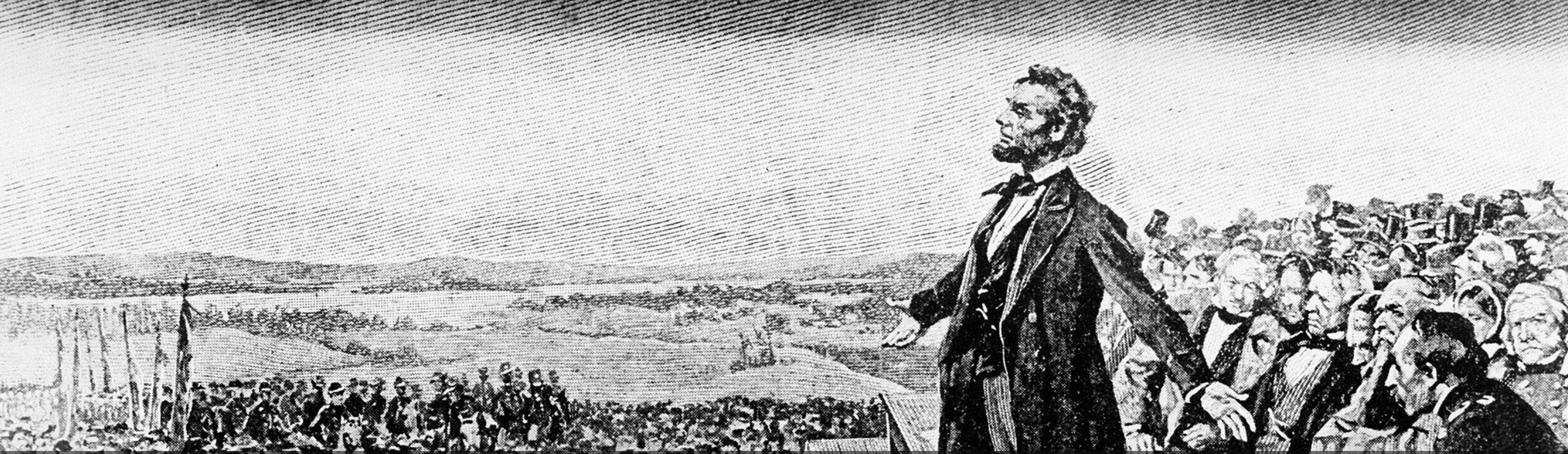
Media: Technological Captivity
Lack of Traditions and Values
Lost Sense of Politics in the Public Realm



“Freedom and equality no longer exist in the traditional sense. They are fundamental illusions that prevent us from perceiving the truth of our technological captivity. The individual, freedom, and equality are vanishing right before our eyes; we are left with a hollowed-out image.”

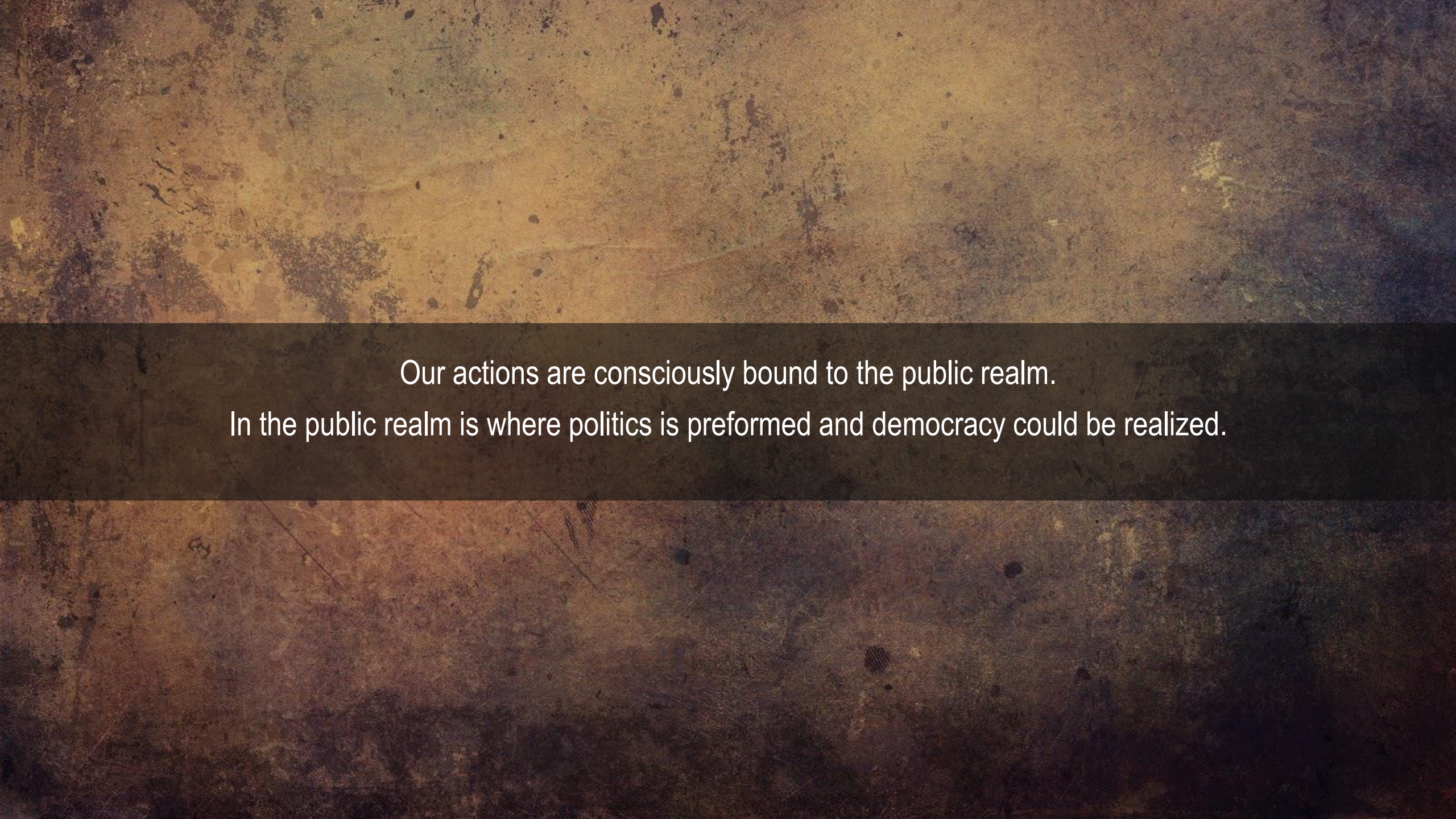
-Richard Stivers, *The Illusion of Freedom and Equality*





“Shall we expect some transatlantic military giant to step the ocean and crush us at a blow? Never! All the armies of Europe, Asia and Africa combined, with all the treasure of the earth in their military chest, with a Bonaparte for a commander, could not by force take a drink from the Ohio or make a track on the Blue Ridge in a trial of a thousand years. At what point then is the approach of danger to be expected? I answer. If it ever reach us it must spring up amongst us; it cannot come from abroad. If destruction be our lot we must ourselves be its author and finisher. As a nation of freemen we must live through all time or die by suicide.”

-Abraham Lincoln, Lyceum Address 1838

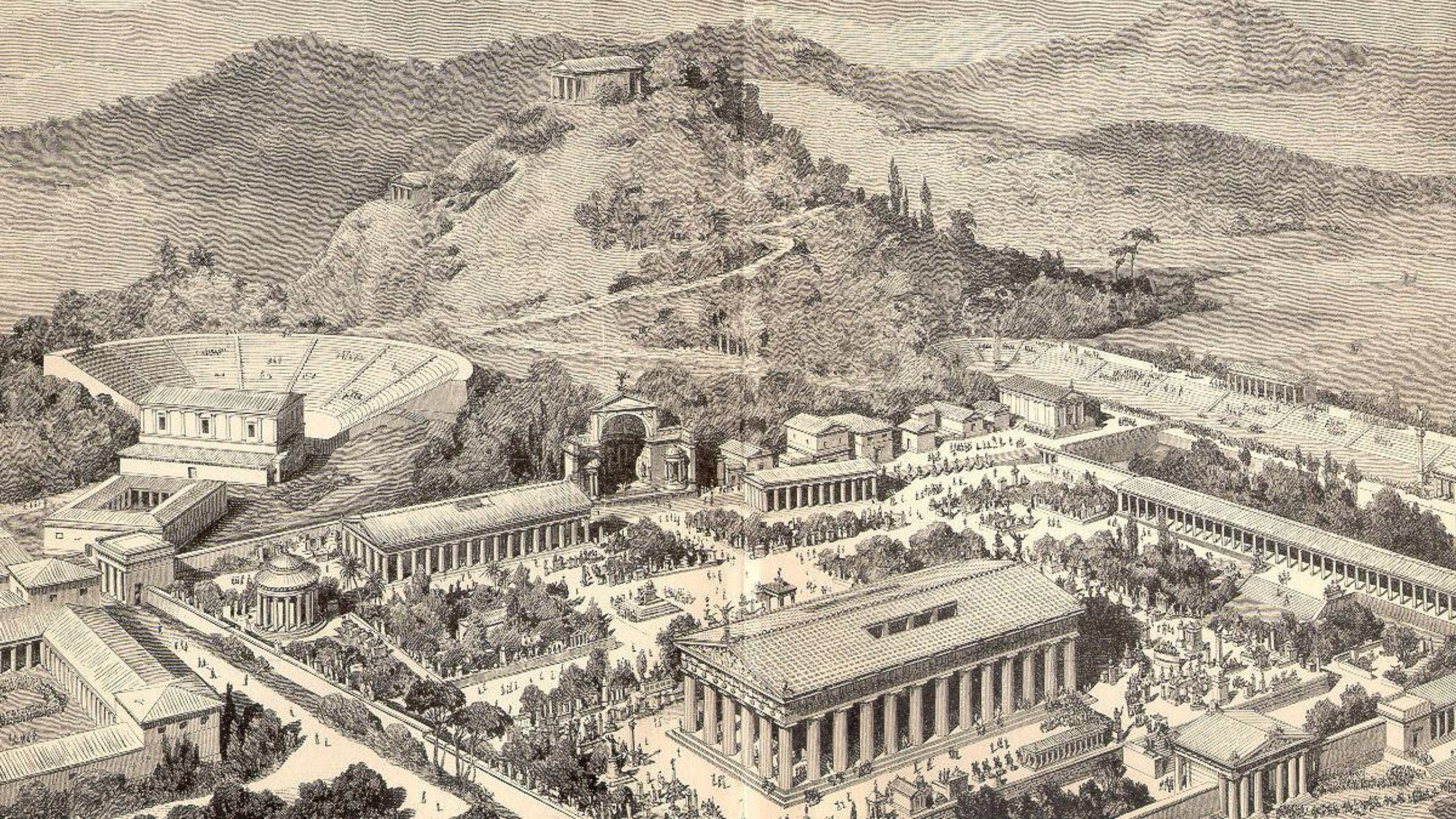


Our actions are consciously bound to the public realm.
In the public realm is where politics is preformed and democracy could be realized.

“In politics, preservation and action, tenderness and the capacity to initiate come together.”

- Hannah Arendt







The Reichstag always remained a symbol of Democracy. Christo and Jeanne Claude in 1995 wrapped the Reichstag in 1,076,390 square feet of thick woven fabric to highlight its features and proportions of the imposing structure. The fabric, like skin, is fragile and “translates the unique quality of impermanence”.

Impermanence: Without exception, is transient, or in a constant state of flux.



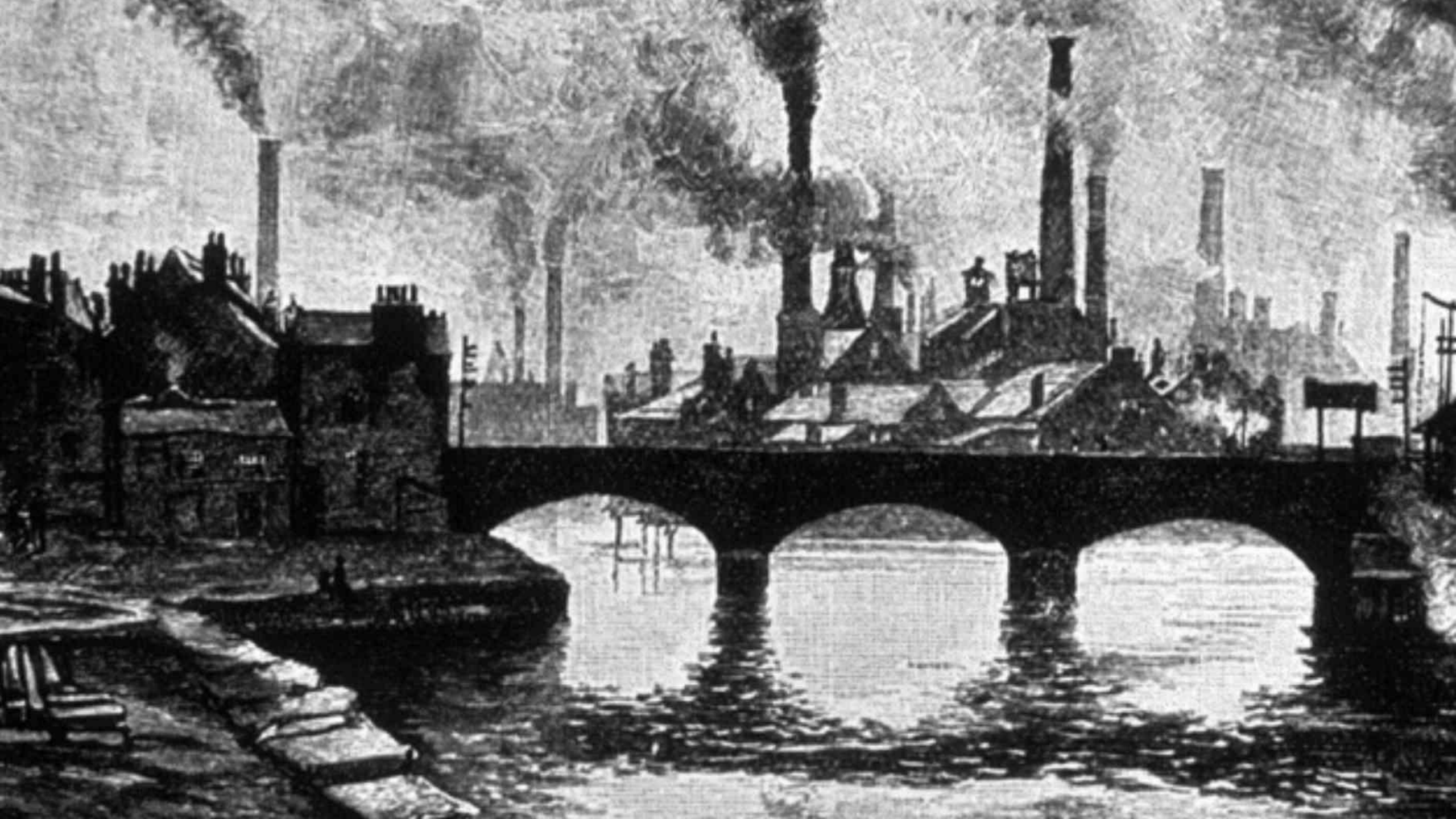
The Reichstag
Berlin, Germany



The transparent dome, the cupola, also symbolizes that people are above the government. The structure, symbolic of rebirth, becomes a beacon on the skyline, signaling the vigor of the German democratic process.

de•mocr•a•cy (dī-n
de•mo•bil•i•ty
discharge
exercised
People,
representatives, 2.

American architecture embodies the ideas of democracy for which our revolution was fought and our Constitution created. Philadelphia embodies revolution and preservation of the political and public realm. That embodiment today is disappearing or a shell of the former.





THE PHILADELPHIA ELECTRIC COMPANY



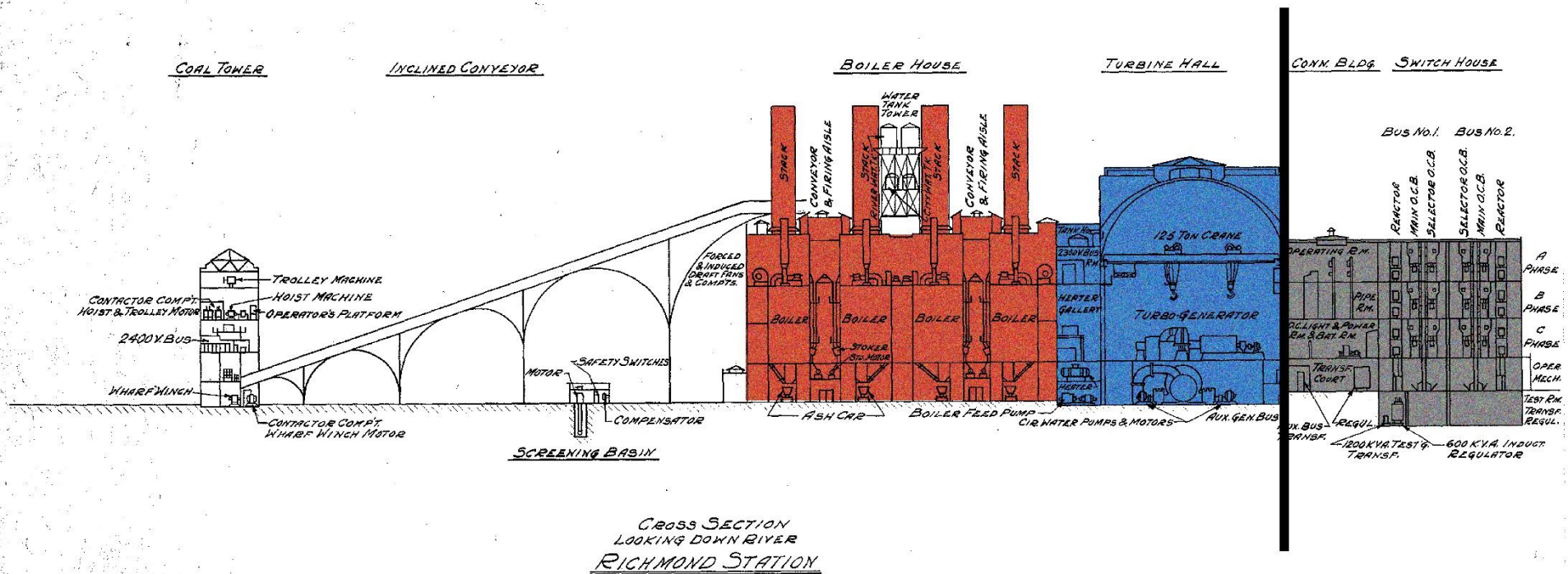
225

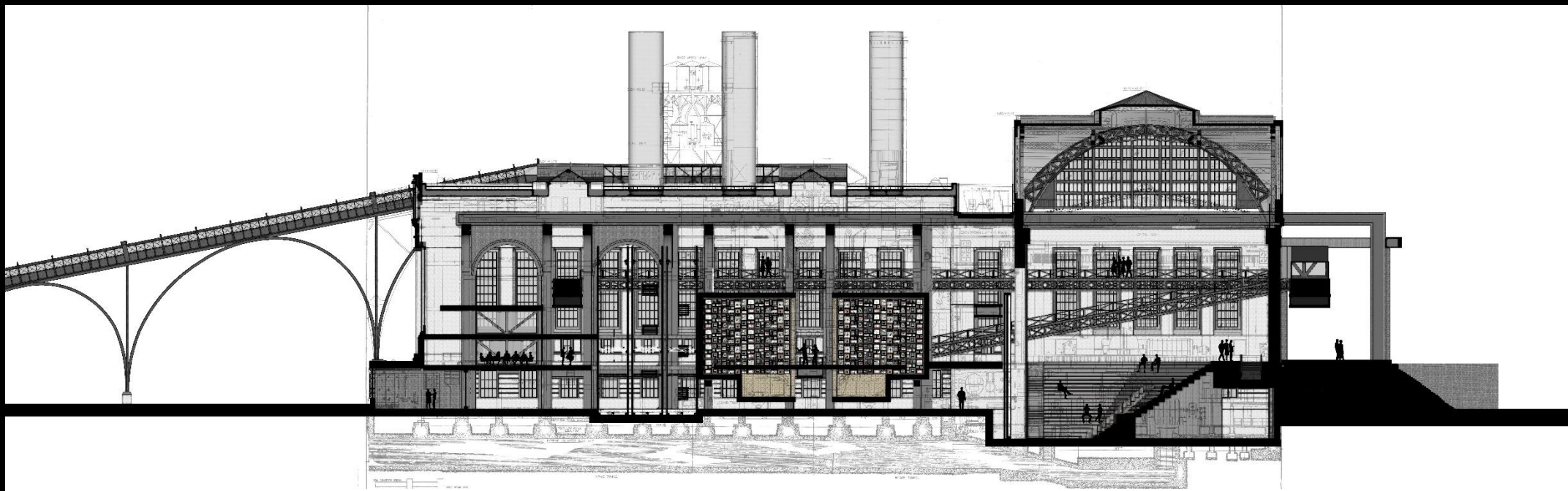
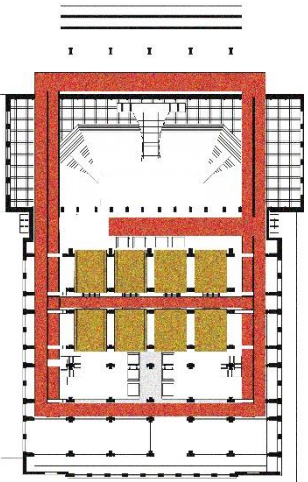
THE PHILADELPHIA
ELECTRIC COMPANY

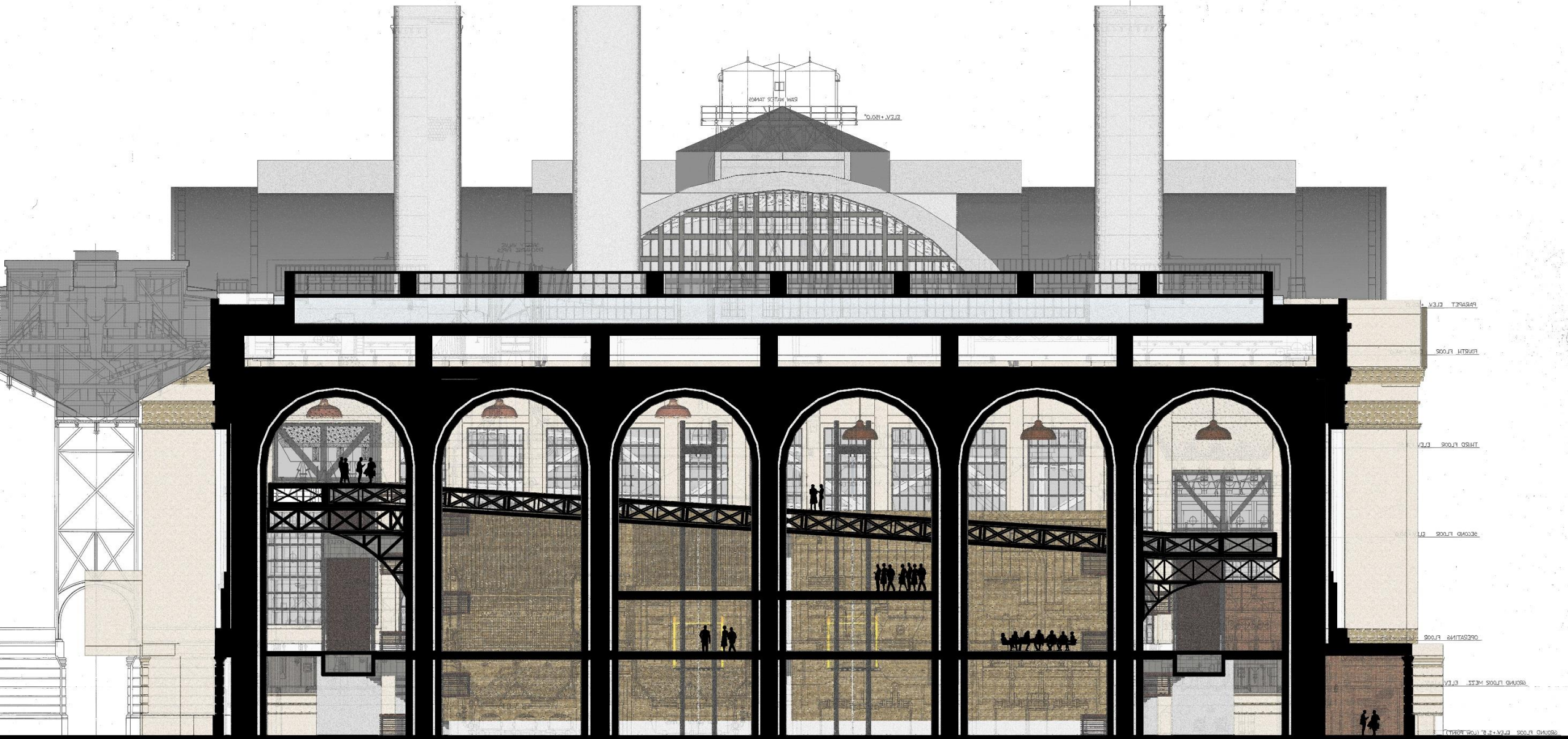


Philadelphia, PA.

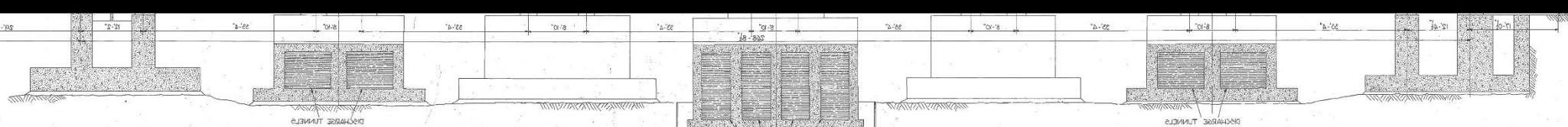




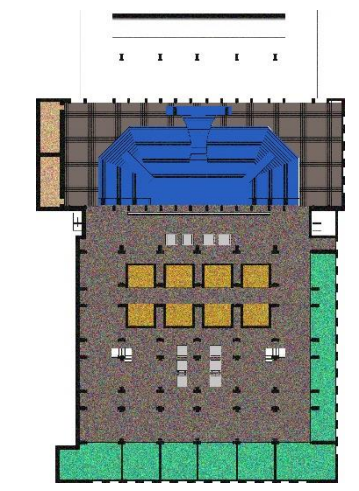


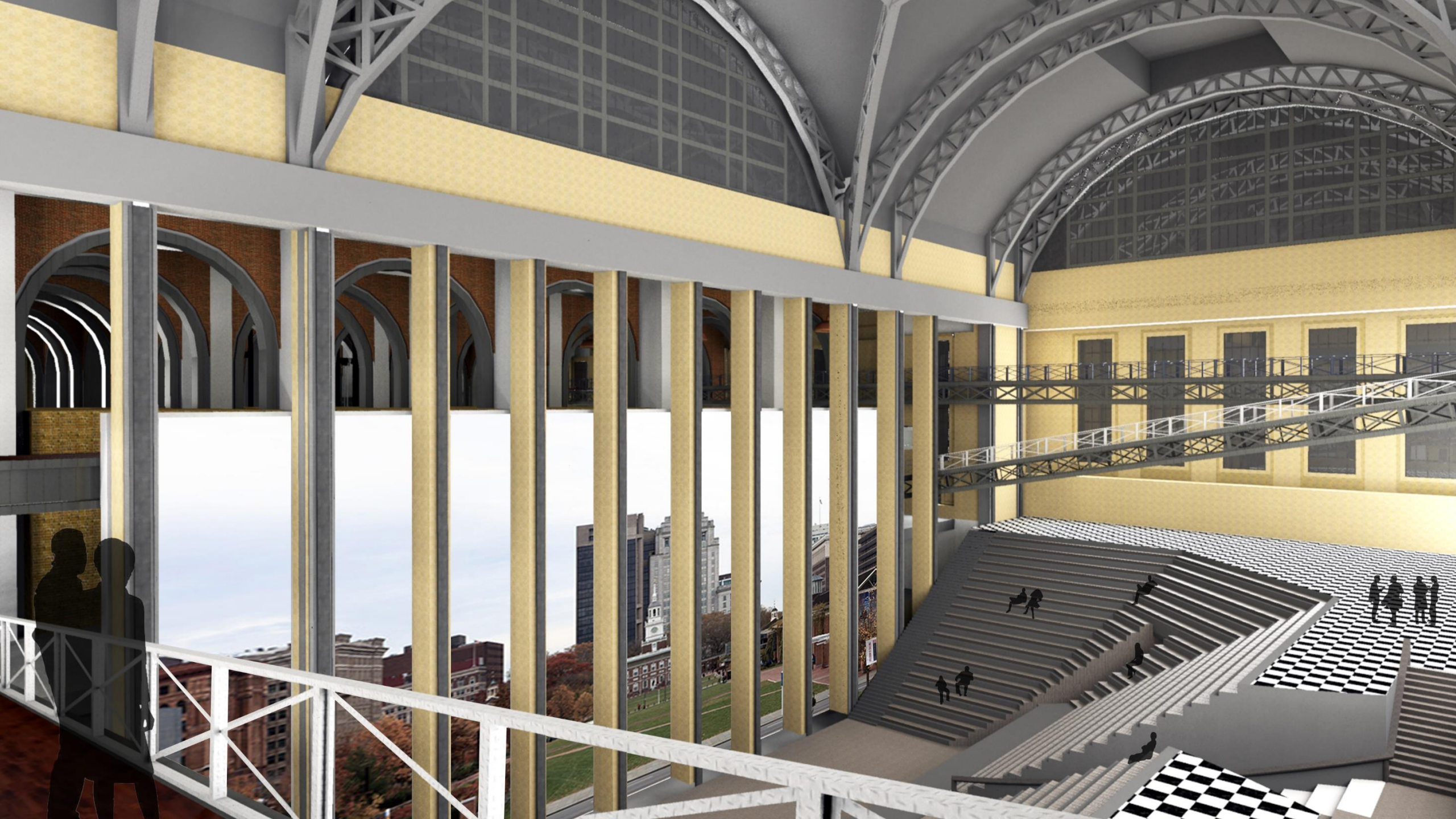


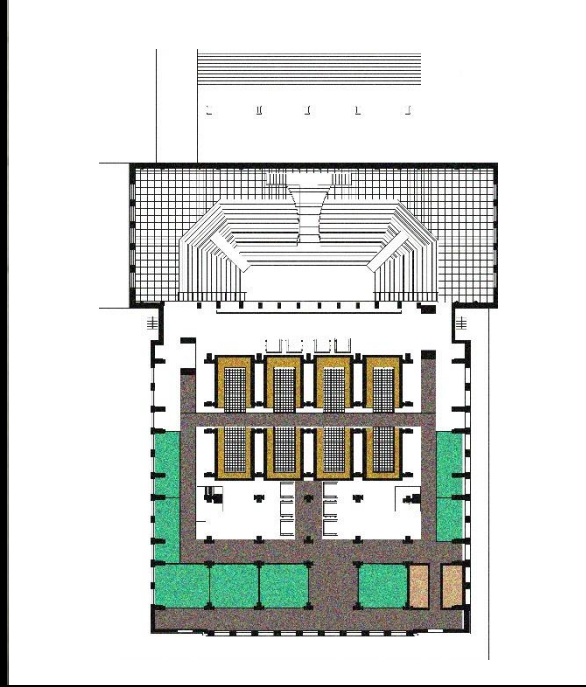
PARAPET ELEV.
FIFTH FLOOR
THIRD FLOOR ELEV.
SECOND FLOOR
OPERATING FLOOR
GROUND FLOOR



ELEVATOR FOR WATER ELEV.-11.5L
ELEVATOR FOR WATER ELEV.-11.5L








THE NSA
facebook
SENT YOU
A FRIEND
REQUEST

GO FORTH AND PROCREATE


FORCE

YOUR BELIEFS ON YOUR CHILDREN



SUSTAIN RELIGION • FOR THE GREATER GOOD

DEFEND
AMERICAN
FREEDOM
IT'S EVERYBODY'S JOB



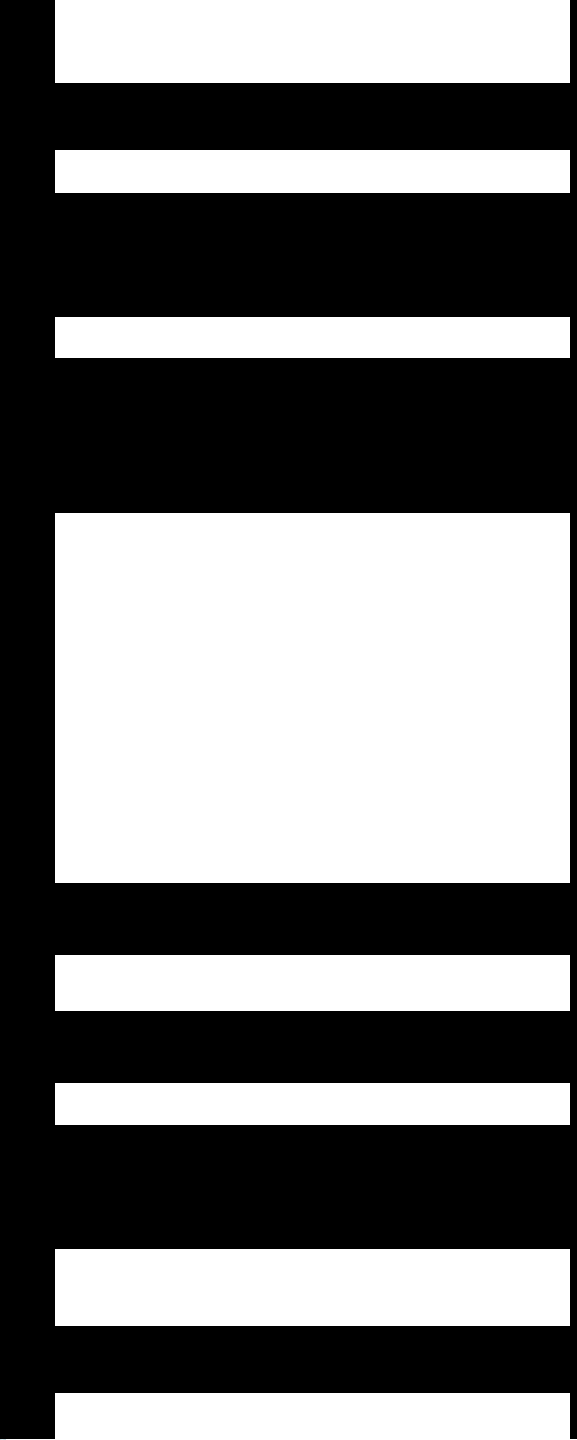
(C) Cleveland Graphics

QUIET!



KNOW YOUR PLACE!
SHUT YOUR FACE!


A MESSAGE FROM THE MINISTRY OF HOMELAND SECURITY



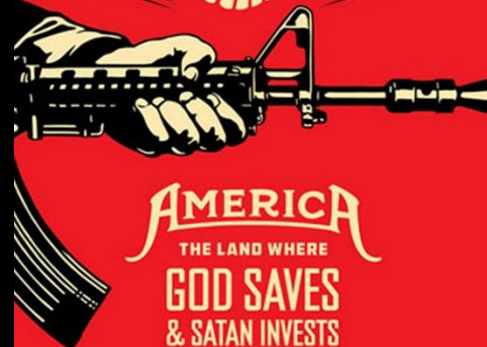
HUMAN
Pro-LIFE
should be PROTECTED

VS.

the
Pro-CHOICE
of WHEN human life
should be protected



NRA



AMERICA
THE LAND WHERE
GOD SAVES
& SATAN INVESTS
IN ASSAULT WEAPONS AND
HIGH CAPACITY MAGAZINES

YOU WRITE WHAT
YOU'RE TOLD!

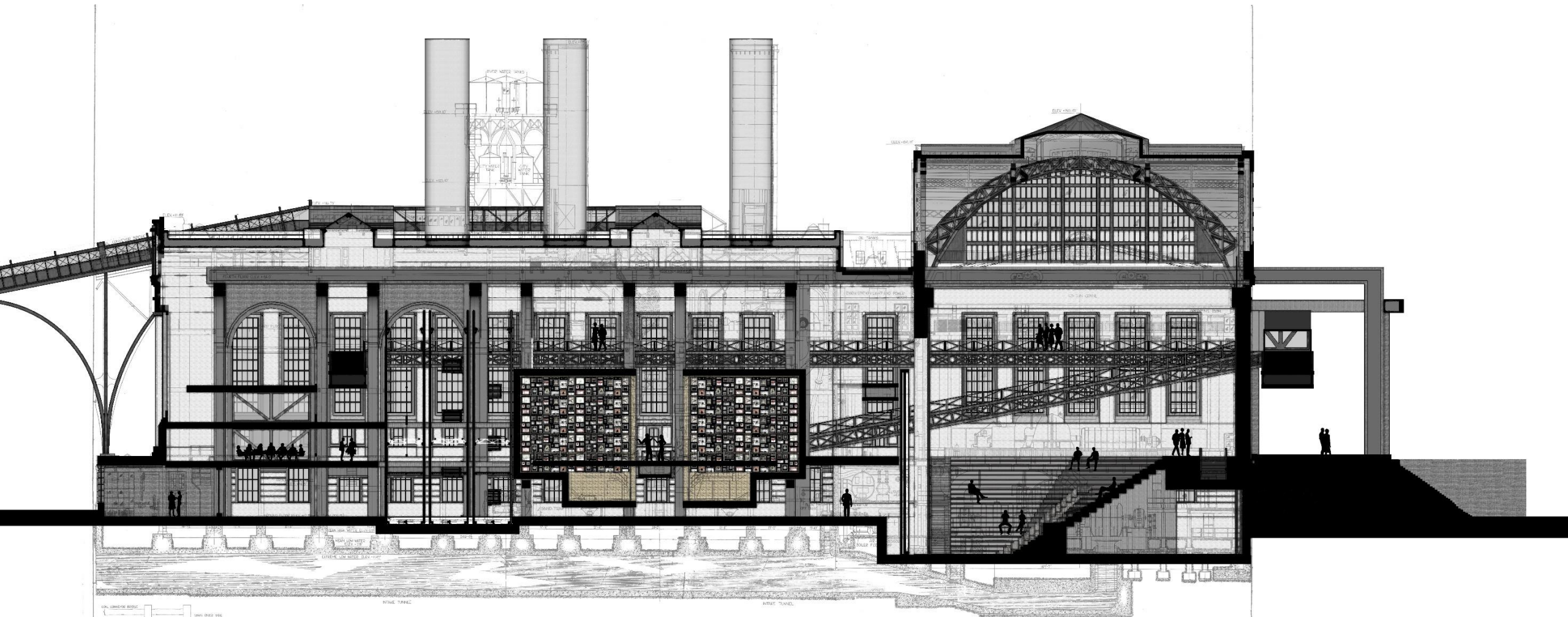


THANKS, CORPORATE NEWS!
We Couldn't Control The People Without You

A MESSAGE FROM THE MINISTRY OF HOMELAND SECURITY



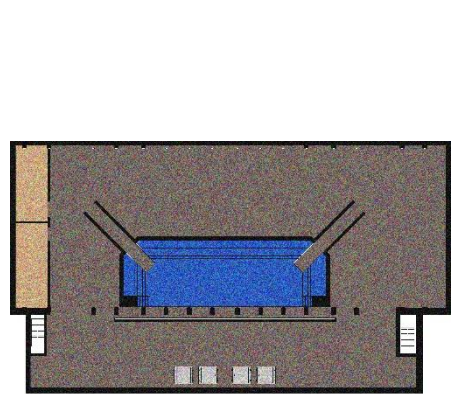
FREEDOM
NOT ECONOMIC TYRANNY



1/4" = 1'-0" (VERTICAL SCALE)
1/8" = 1'-0" (HORIZONTAL SCALE)

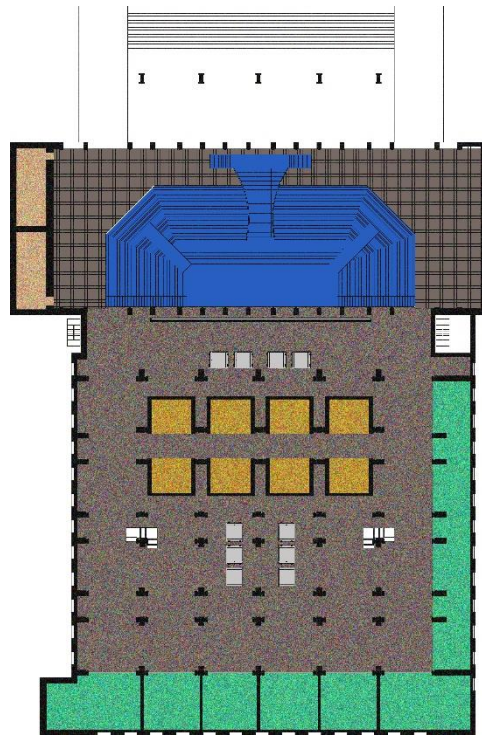
WALKWAY

ENTRANCE

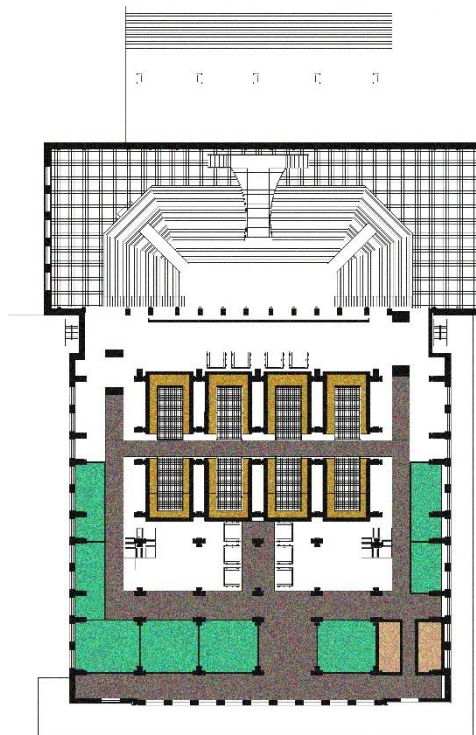


Lower Level

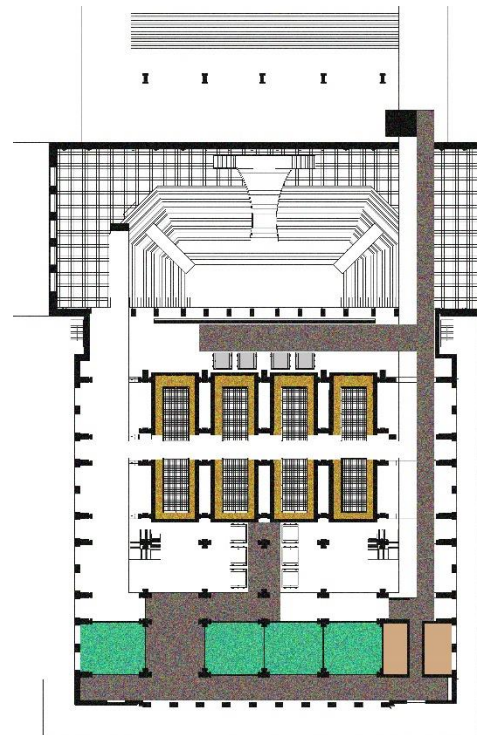
- Elevated Ramps/Platform
- Grand Debate Space
- Circulation/House Space
- Refinements
- Political Offices (Halls)
- Continuous Conversation Spaces



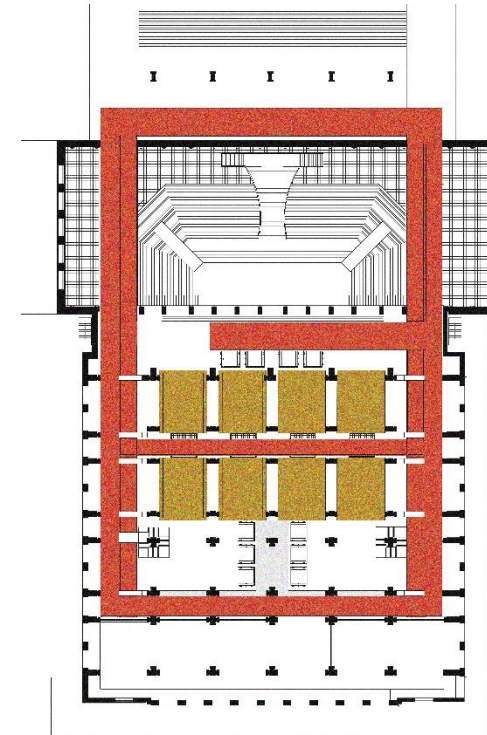
Main Level



Second Level



Third Level



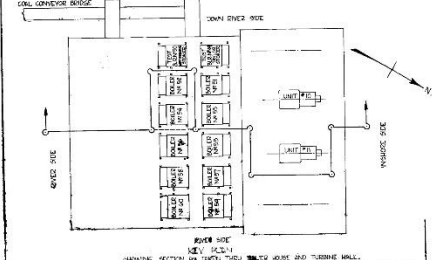
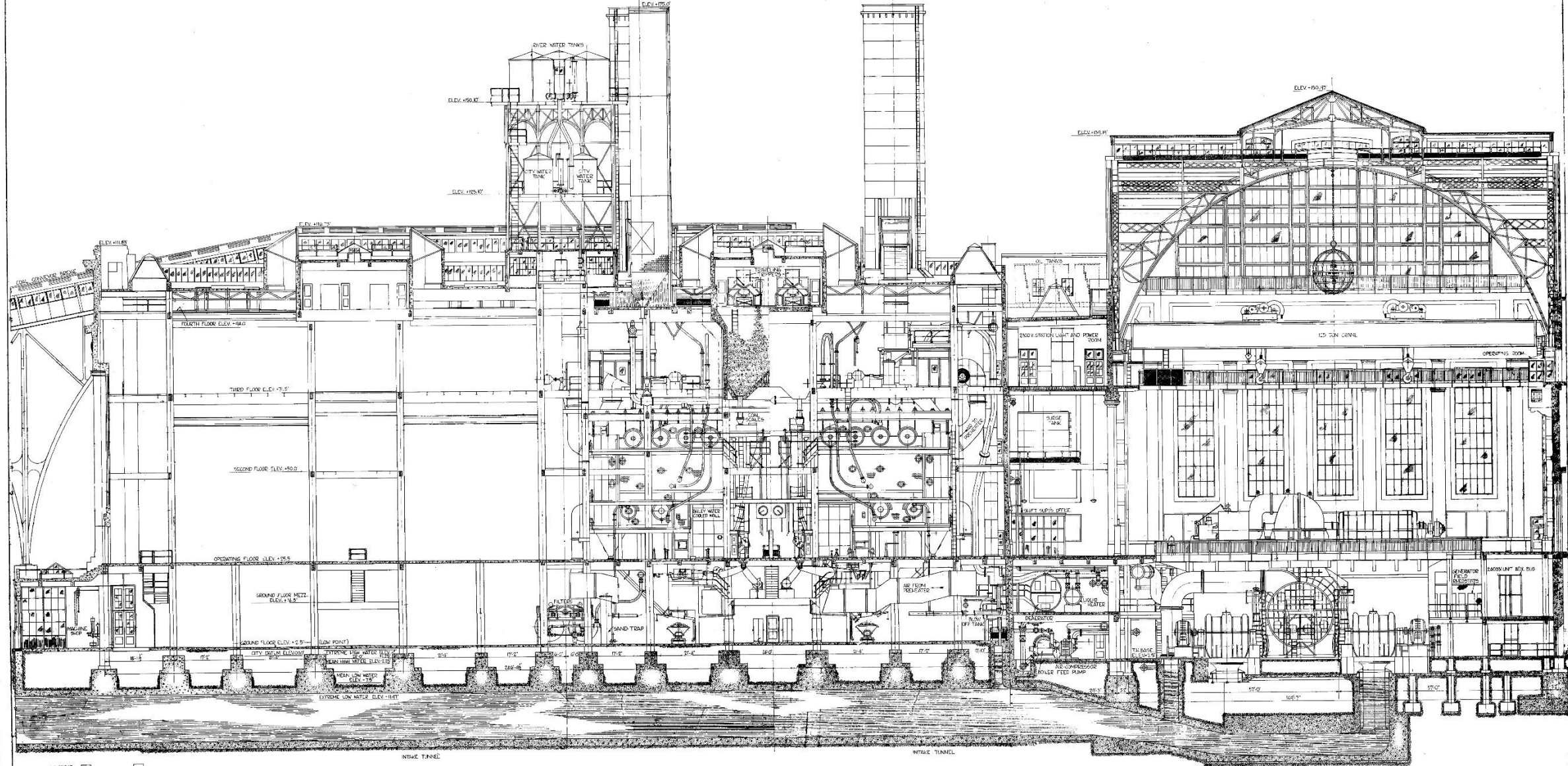
Circulation/Elevated Ramp





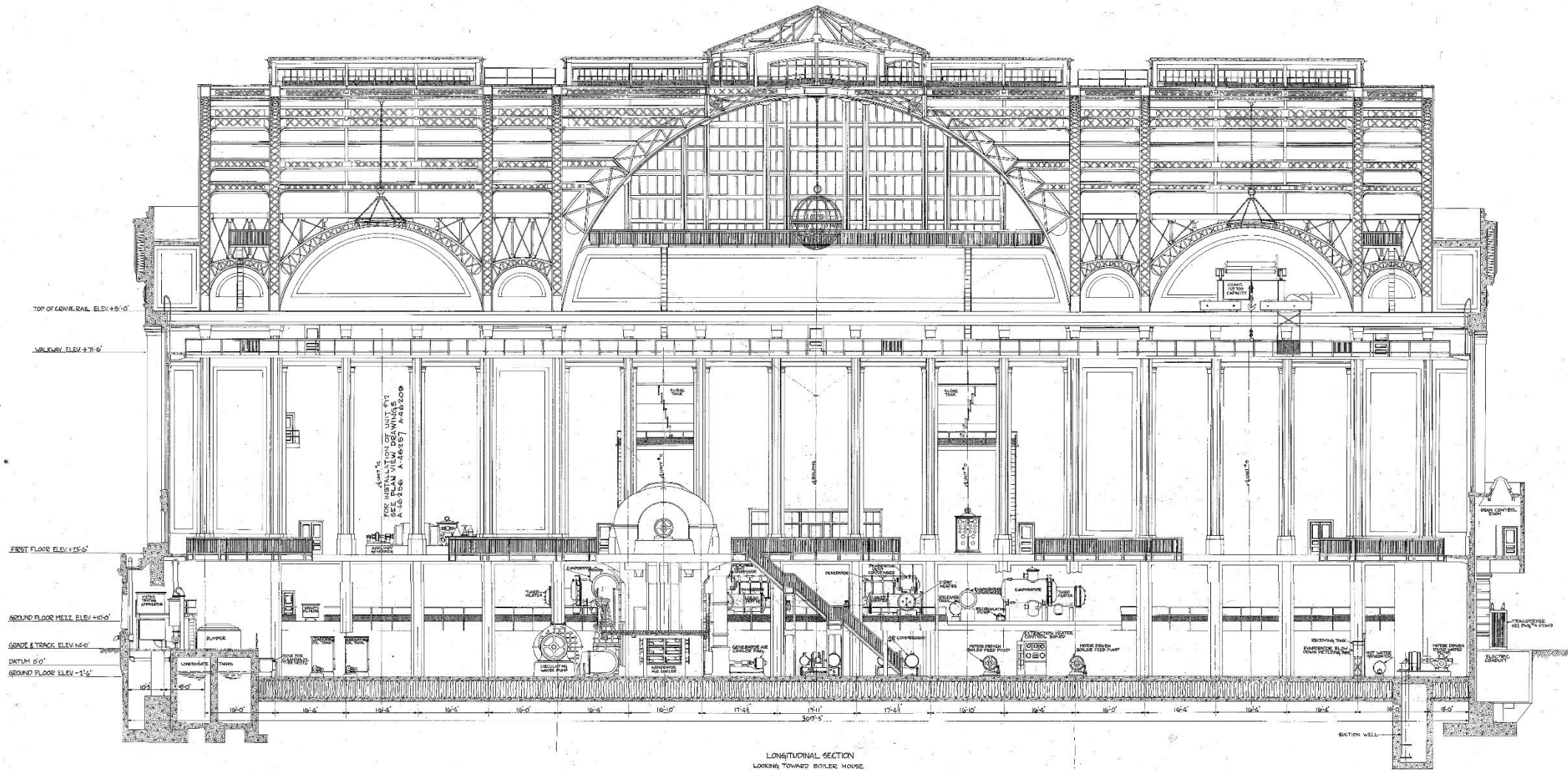
YOU ARE AT 300

DANGER
KEEP OFF
WHITE BARS

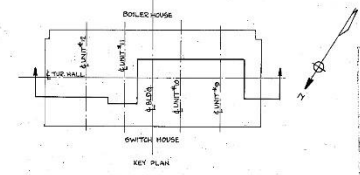


CROSS SECTION THRU BOILER HOUSE AND TURBINE HALL NO. 3
RICHMOND STATION
 THE PHILADELPHIA ELECTRIC COMPANY.
 MECHANICAL BRANCH.

SCALE: 1/4" = 1'-0"
 APPROVED: [Signature]
 APPROVED: [Signature]
 ESTIMATE 45110
 A-46255



LONGITUDINAL SECTION
LOOKING TOWARD BOILER HOUSE

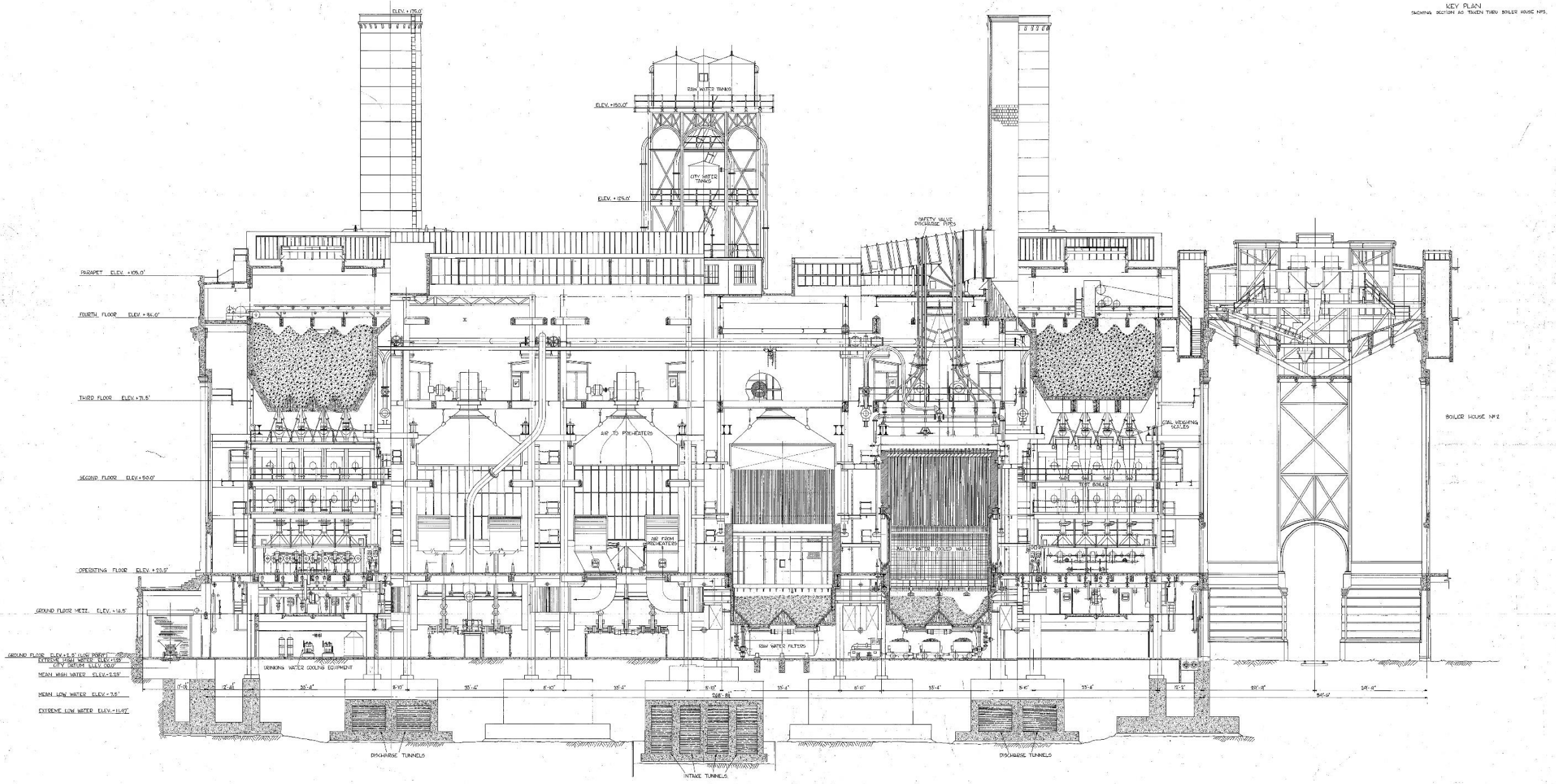
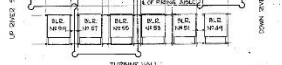


LONGITUDINAL SECTION
THRU
TURBINE HALL No. 3
RICHMOND STATION
THE PHILADELPHIA ELECTRIC CO.
MECHANICAL BRANCH

DESIGNED BY
DRAWN BY
CHECKED BY
APPROVED BY
DATE

45110
47938

46274



LONGITUDINAL SECTION
THRU
BOILER HOUSE N° 3
RICHMOND STATION
THE PHILADELPHIA ELECTRIC COMPANY
MECHANICAL DEPARTMENT