

≡ DWELLING IN NOMADIC ARCHITECTURE ≡

TRANSITIONAL HOUSING FOR THE SUDDENLY AND CHRONICALLY HOMELESS



WHAT IS THE RELATIONSHIP BETWEEN HOMELESSNESS AND NOMADISM?

WHY HAVE WE MOVED AWAY FROM NOMADISM?



NOMADISM HAS A NEED FOR SMOOTH SPACE WITHIN STRIATED SPACE.

WHAT IS IN SMOOTH AND STRIATED SPACE?



THERE IS A NEED FOR PLACE AND NON-PLACE AS DEFINED BY MARC AUGE

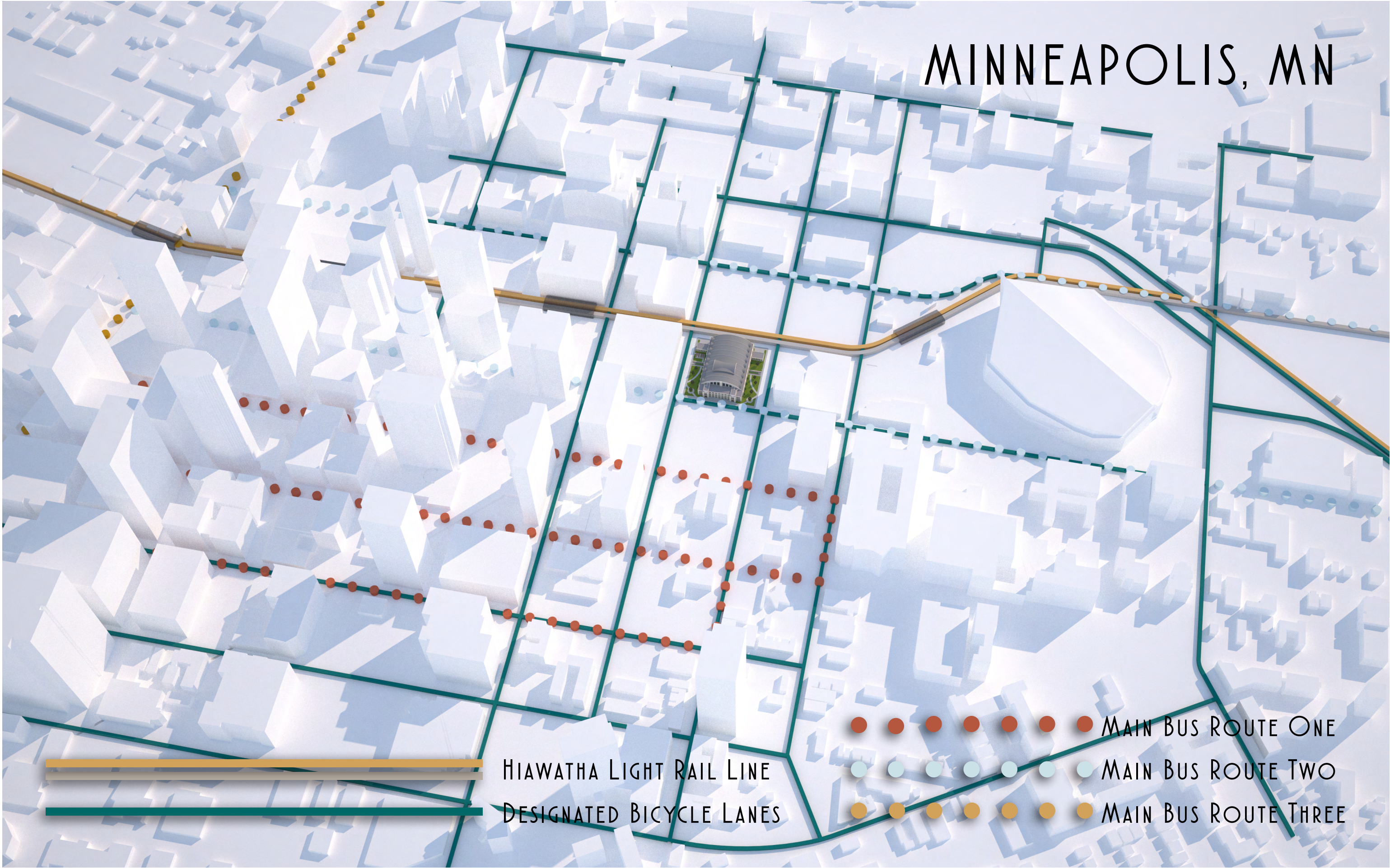
IT IS IMPORTANT TO HAVE SPACES THAT ALLOW FOR ANONYMITY WHILE
BEING PART OF A LARGER GROUP

THE MINNEAPOLIS ARMORY – A BRIDGE TO OPPORTUNITY



AN ADAPTIVE REUSE TO BRIDGE SEDENTARY LIVING AND NOMADIC HOMELESSNESS

MINNEAPOLIS, MN



HIAWATHA LIGHT RAIL LINE

DESIGNATED BICYCLE LANES

● ● ● ● ● ● ● MAIN BUS ROUTE ONE

● ● ● ● ● ● ● MAIN BUS ROUTE TWO

● ● ● ● ● ● ● MAIN BUS ROUTE THREE



MINNEAPOLIS ARMORY

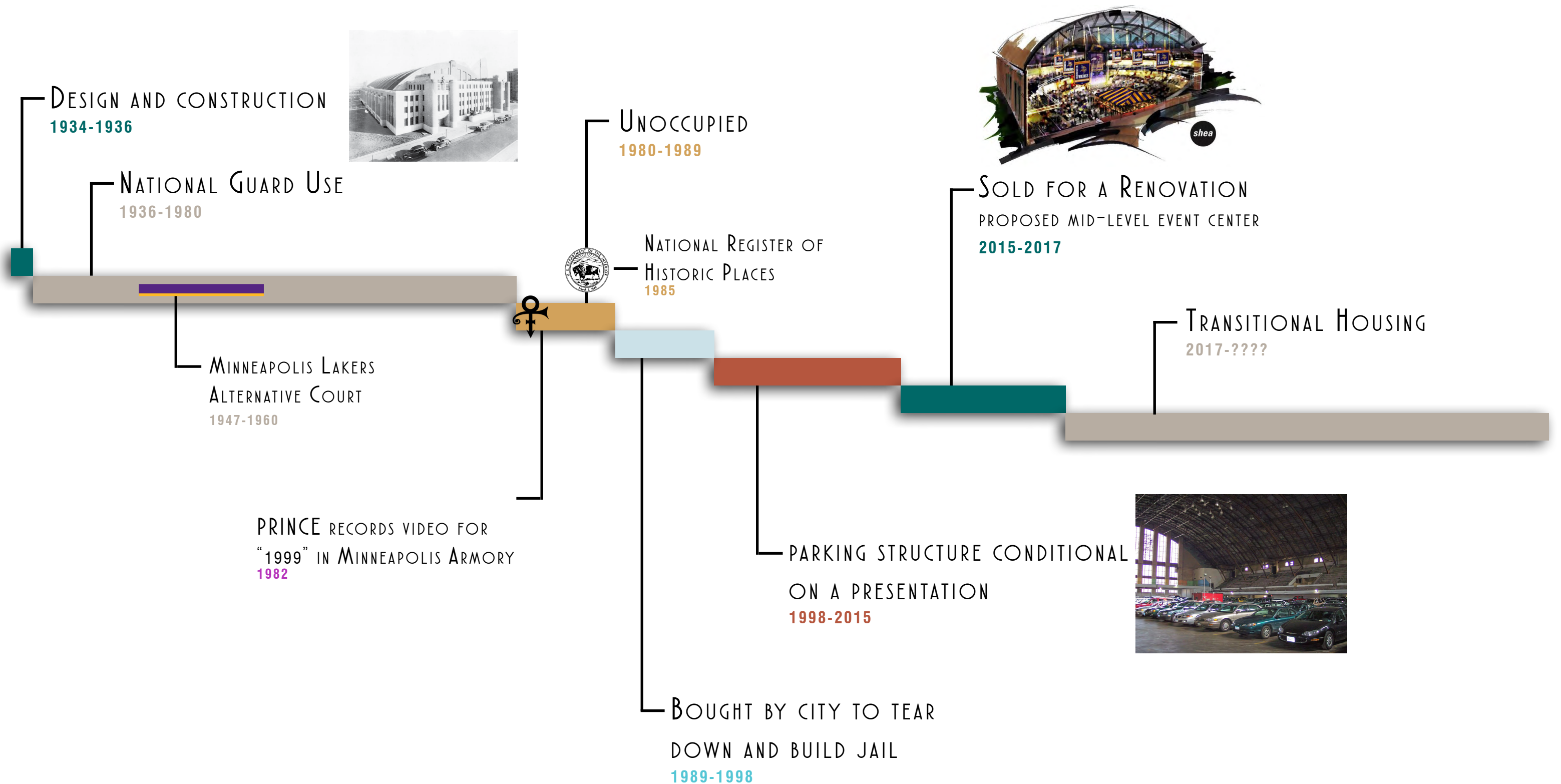
BUILT IN 1936 AS PART OF THE PUBLIC WORKS ADMINISTRATION DURING THE GREAT DEPRESSION ERA.

-DESIGNED BY MN NATIONAL GUARD ARCHITECT MAJOR PHILIP C. BETTENBURG

THE PUBLIC WORKS ADMINISTRATION DID NOT CONSIDER ITSELF A RELIEF AGENCY, BUT A WAY TO STIMULATE RECOVERY.

JUST AS THE PWA PROVIDED AN OPPORTUNITY TO TRANSITION OUT OF UNEMPLOYEMENT, THE ARCHITECTURE I HAVE DESIGNED HOPES TO PROVIDE AN OPPORTUNITY TO TRANSITION TO A MORE COMPLETE SENSE OF DWELLING.

MINNEAPOLIS ARMORY THROUGHOUT HISTORY

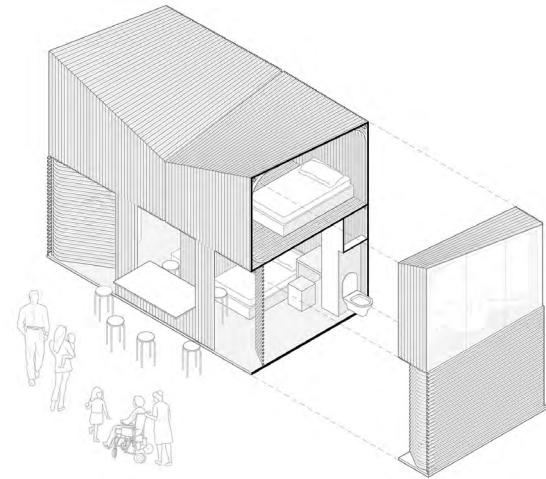
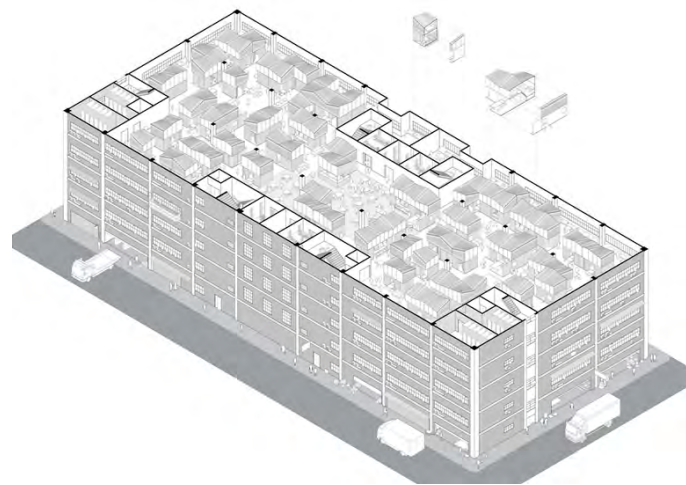
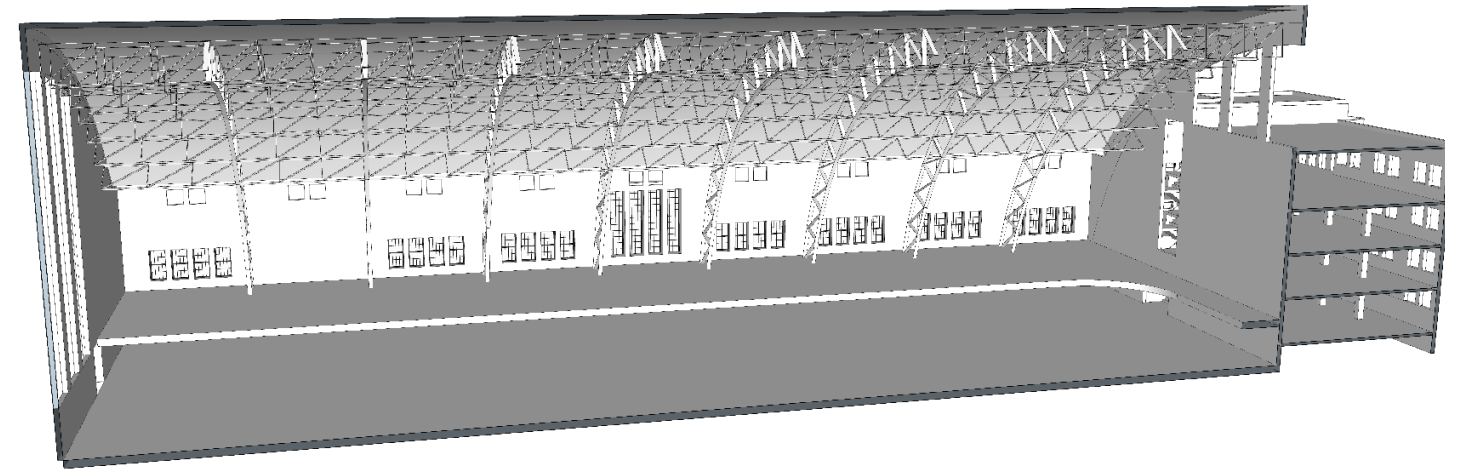


TRANSITION FROM THEORY TO PRACTICE

DRAWN TO ARMORY FOR ITS VOLUMINOUS OPEN SPACE, AND VARIETY OF SPACES.

INITIALLY WANTED AS MUCH OPEN SPACE AS POSSIBLE TO ALLOW FOR BUILDING PERSONAL DWELLINGS.

HOWEVER THAT MEANT NOT MAXIMIZING THE AMOUNT OF SPACE, SEVERELY LIMITING THE AMOUNT OF PEOPLE THE ARCHITECTURE WOULD BE ABLE TO ASSIST.

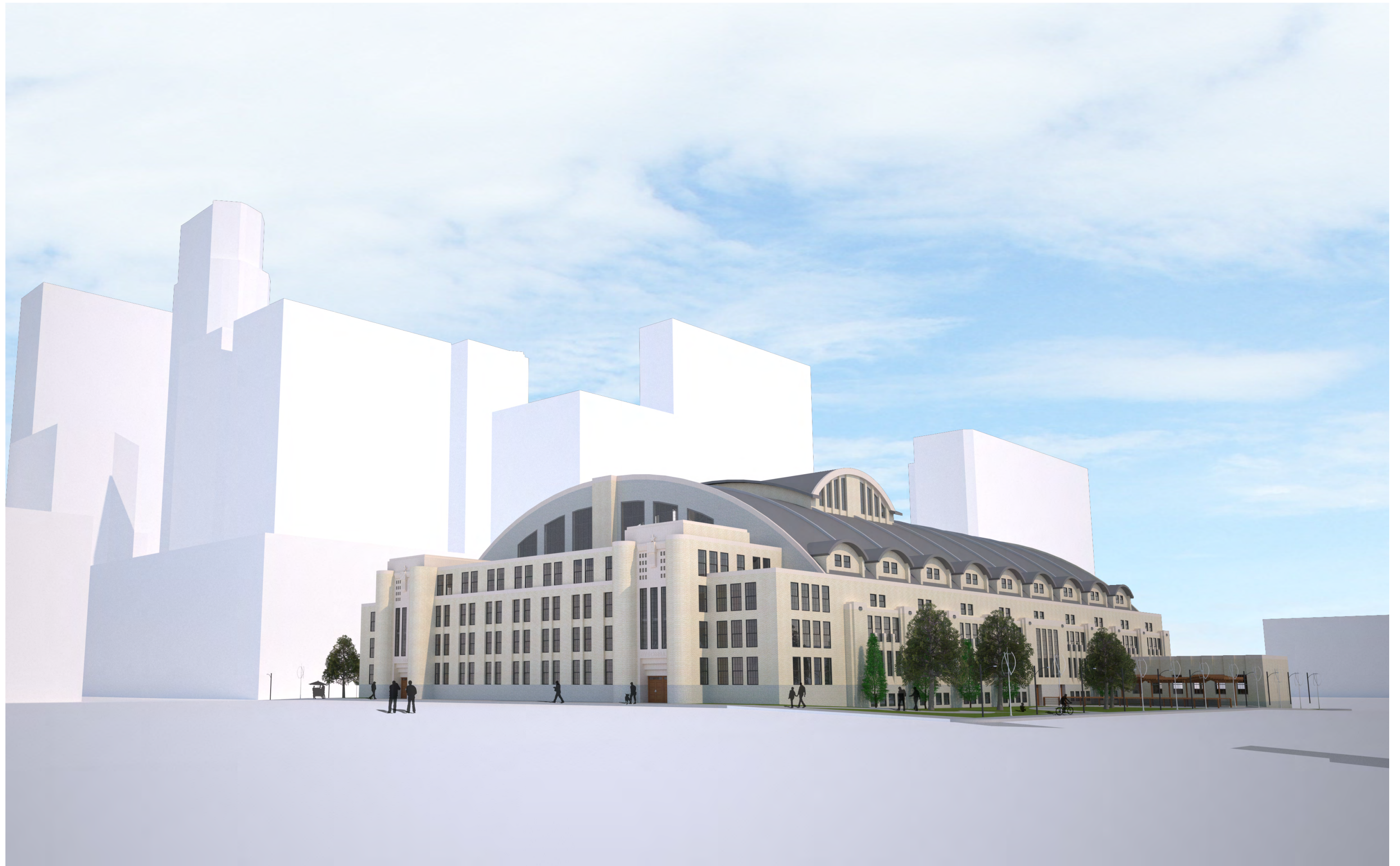


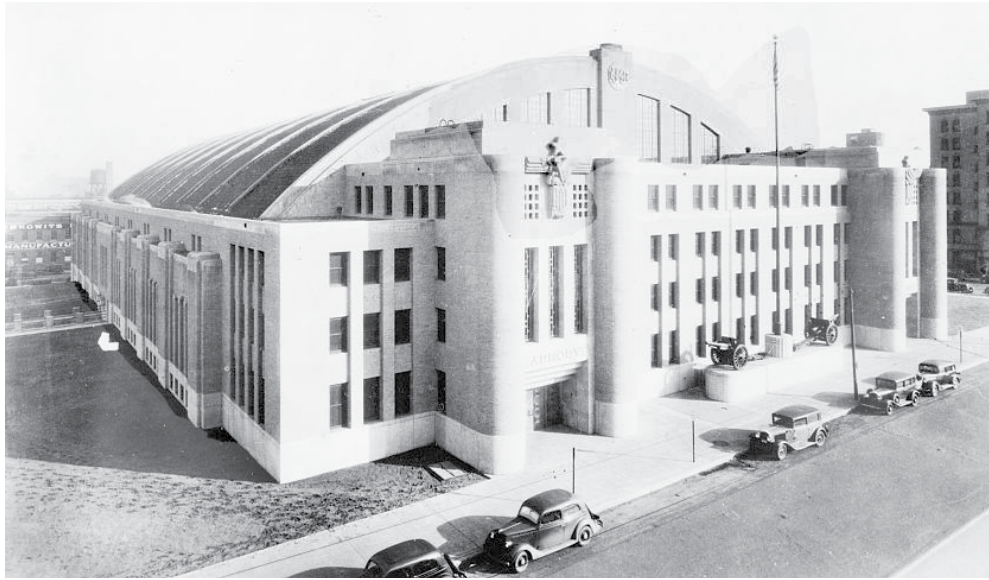
ESTIMATED 104 PEOPLE
79,000 SQ FT.

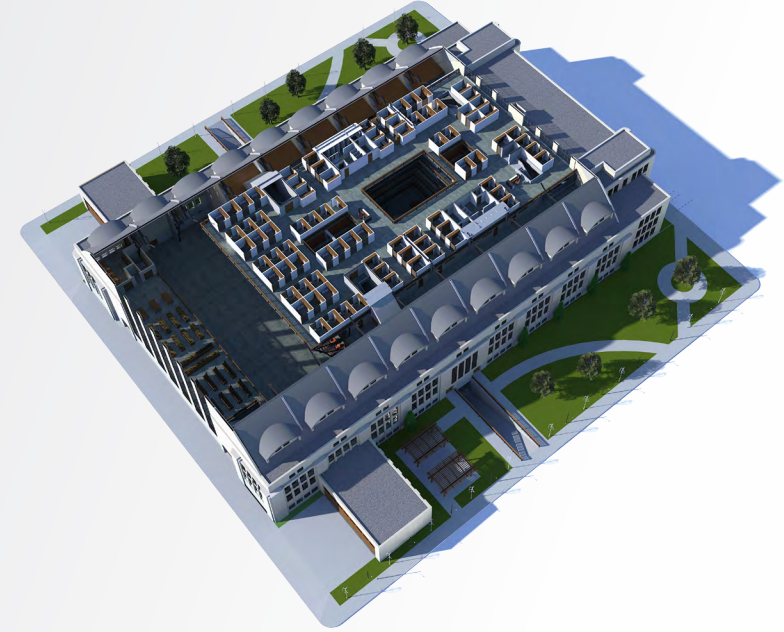
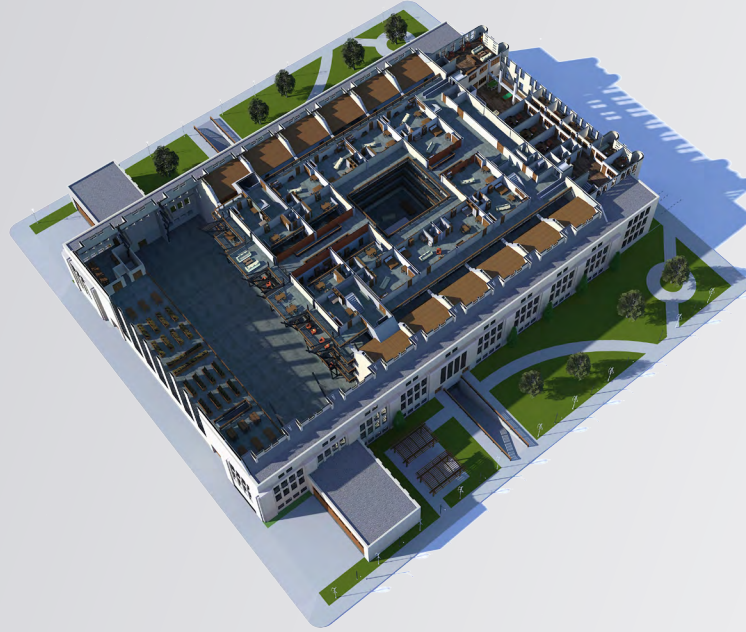
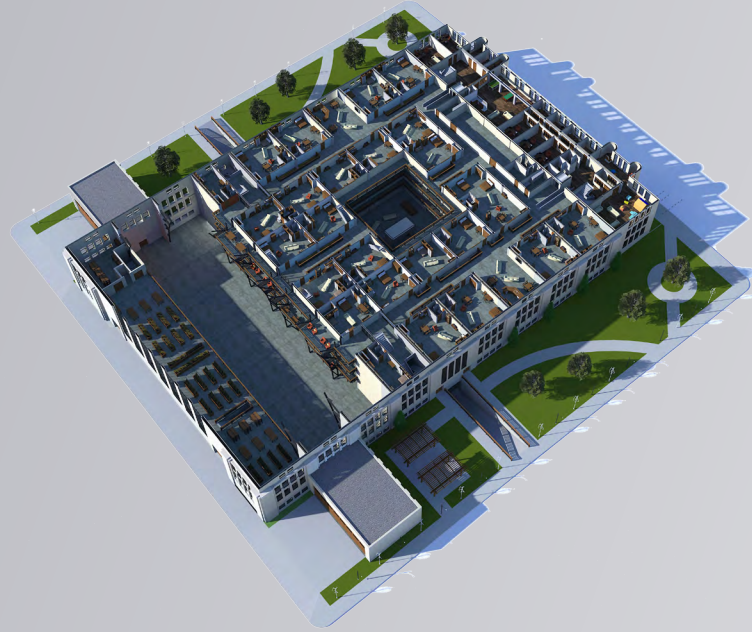
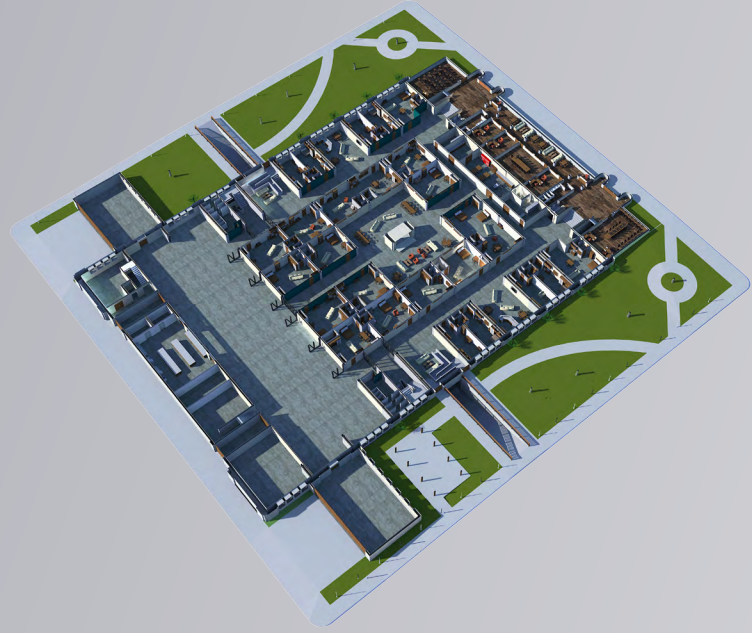


MINIMUM OF 203 PEOPLE
196,000 SQ FT.
NUMBER WILL INCREASE WITH FAMILIES
TARGET OF 282 PEOPLE
PLUS 82 OVERFLOW SLEEPING UNITS





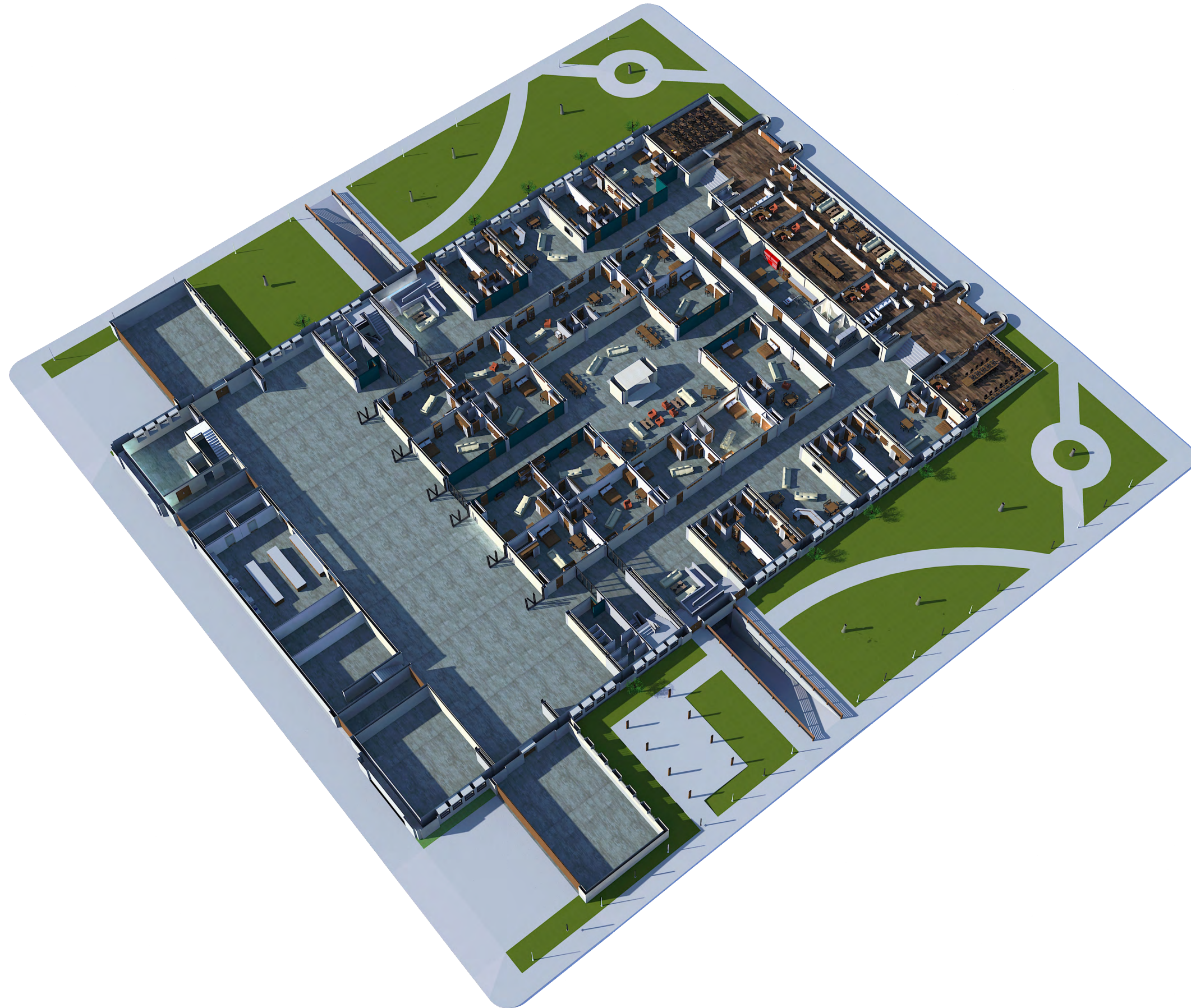




FIRST FLOOR

SINGLE UNITS: 8
DOUBLE UNITS: 16

MINIMUM NUMBER
OF RESIDENTS: 42



SECOND FLOOR

SINGLE UNITS: 17
DOUBLE UNITS: 16

MINIMUM NUMBER
OF RESIDENTS: 49



THIRD FLOOR

SINGLE UNITS: 17
DOUBLE UNITS: 12

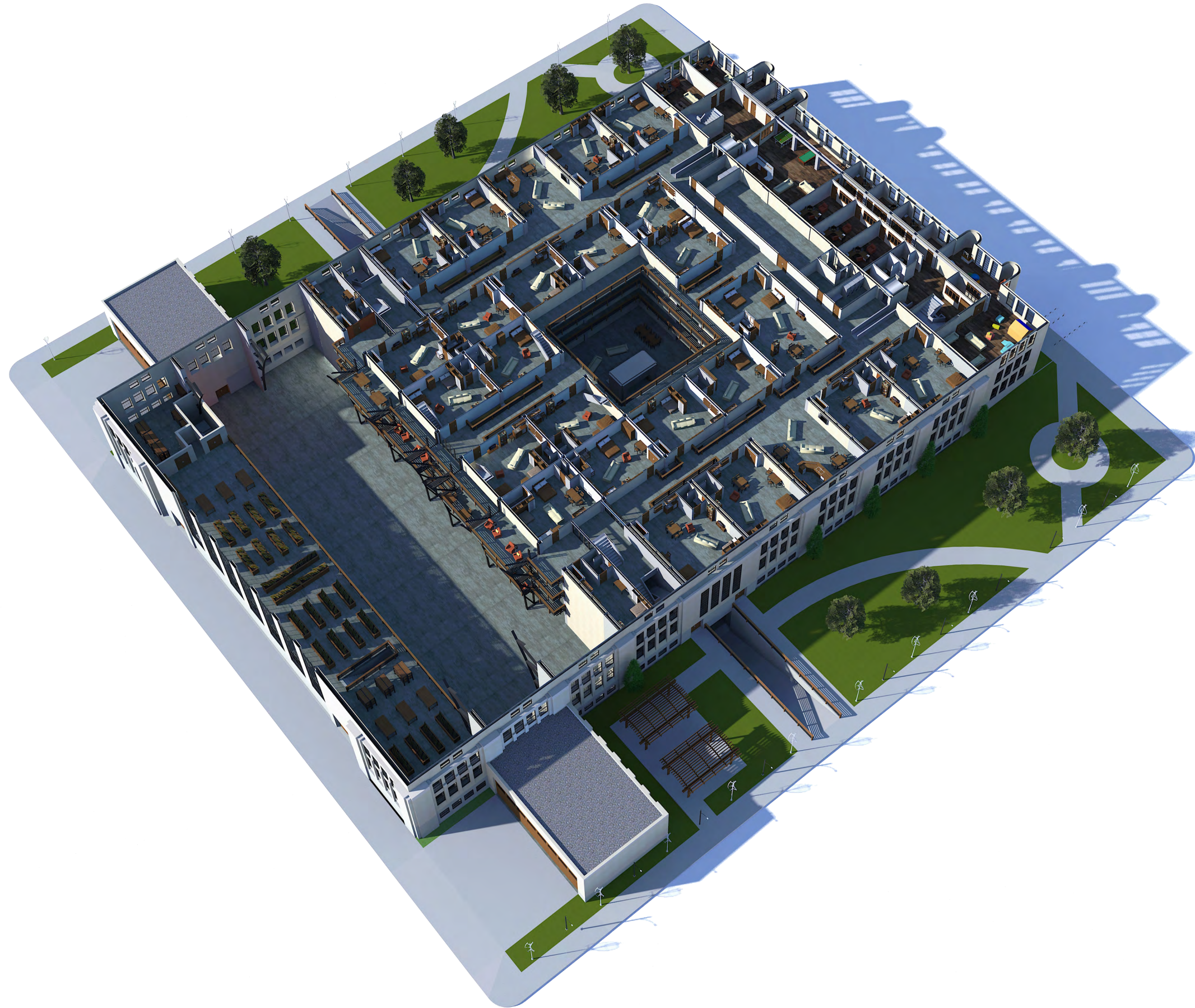
MINIMUM NUMBER
OF RESIDENTS: 41



FOURTH FLOOR

SINGLE UNITS: 2
DOUBLE UNITS: 24

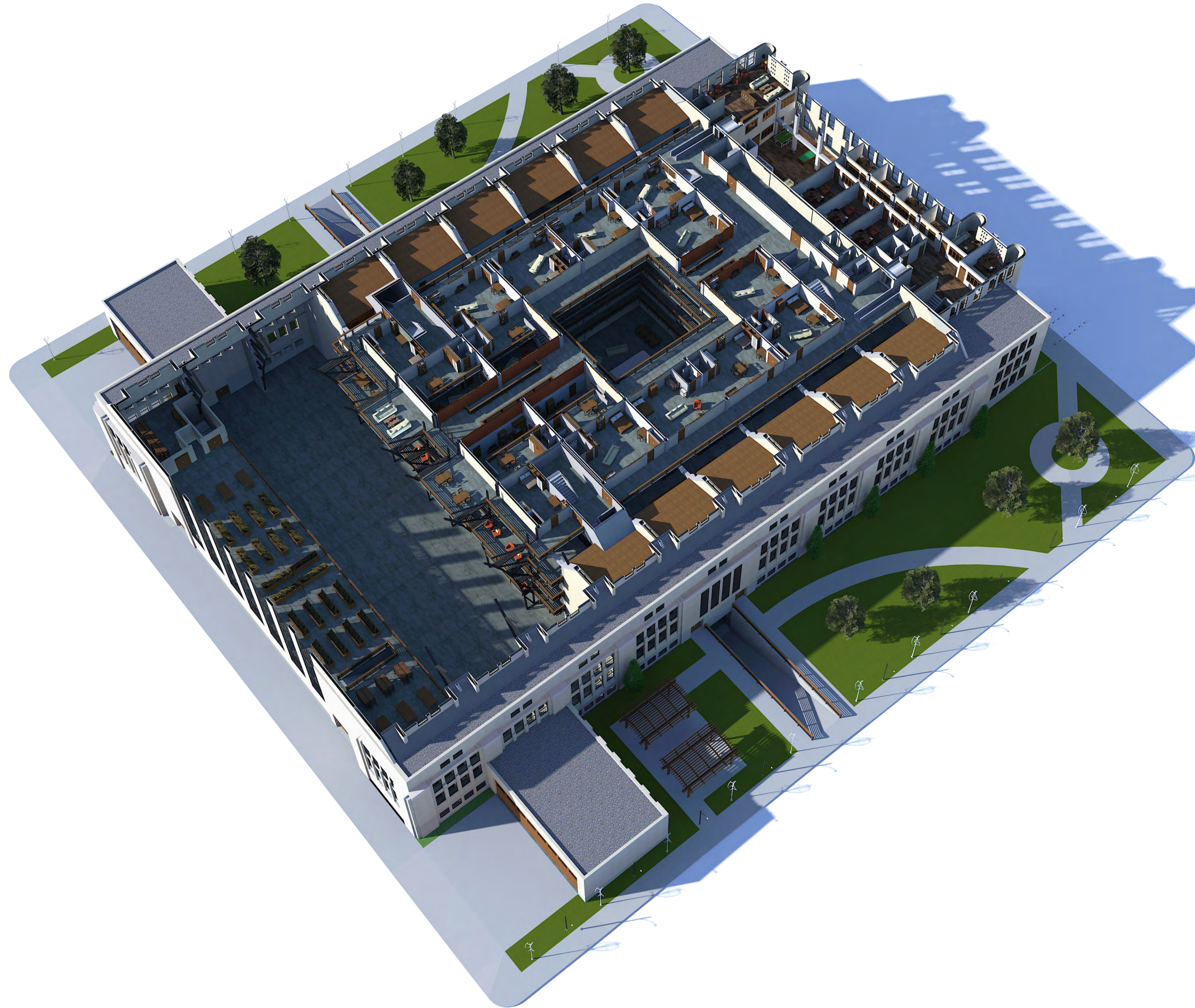
MINIMUM NUMBER
OF RESIDENTS: 50



FIFTH FLOOR

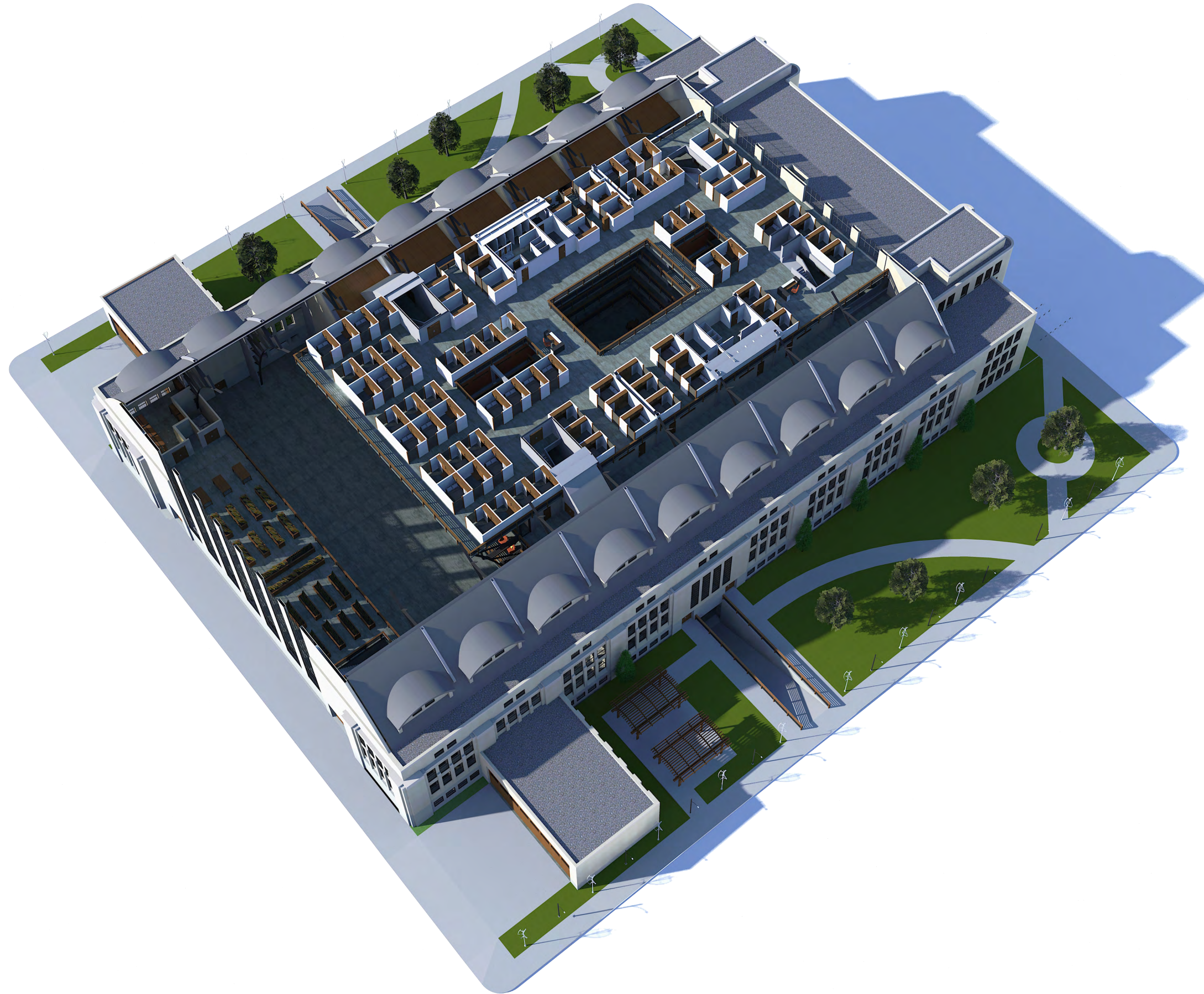
SINGLE UNITS: 2
DOUBLE UNITS: 10

MINIMUM NUMBER
OF RESIDENTS: 22

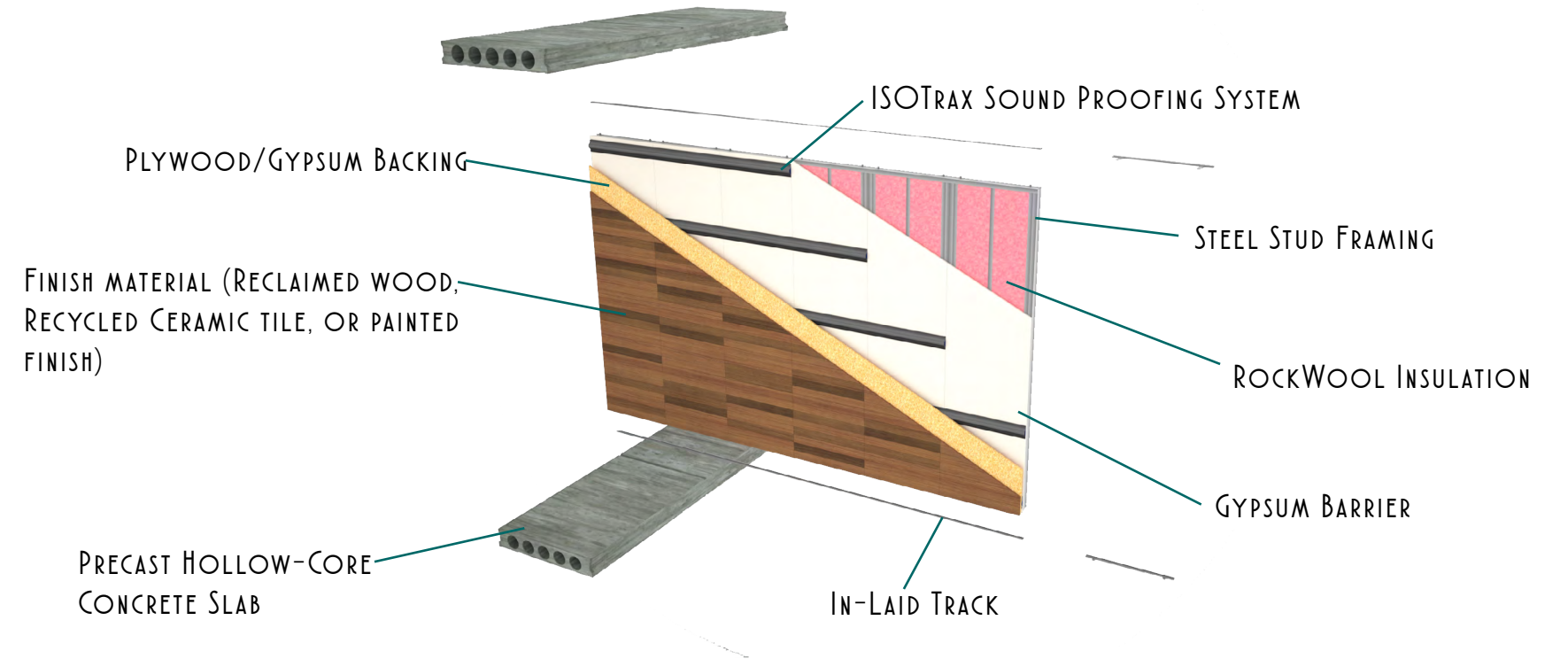
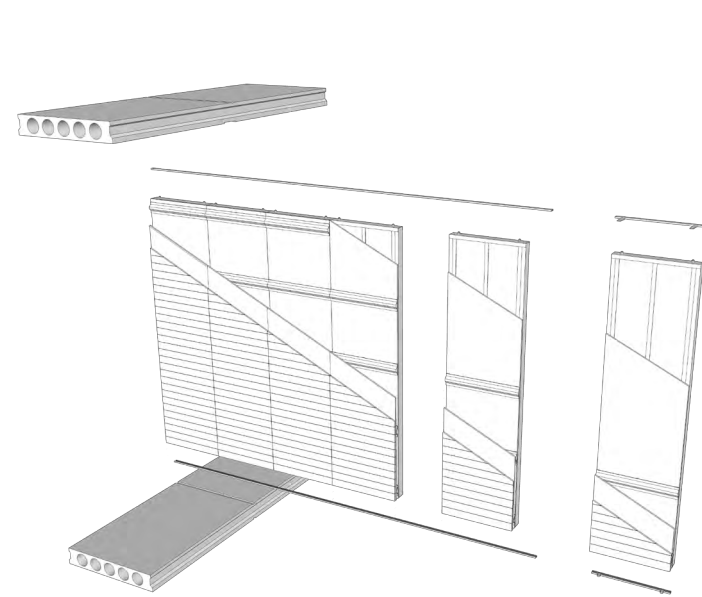


SIXTH FLOOR

MINIMUM OF 82
EMERGENCY SLEEPING
UNITS



ADAPTABLE WALL DETAIL

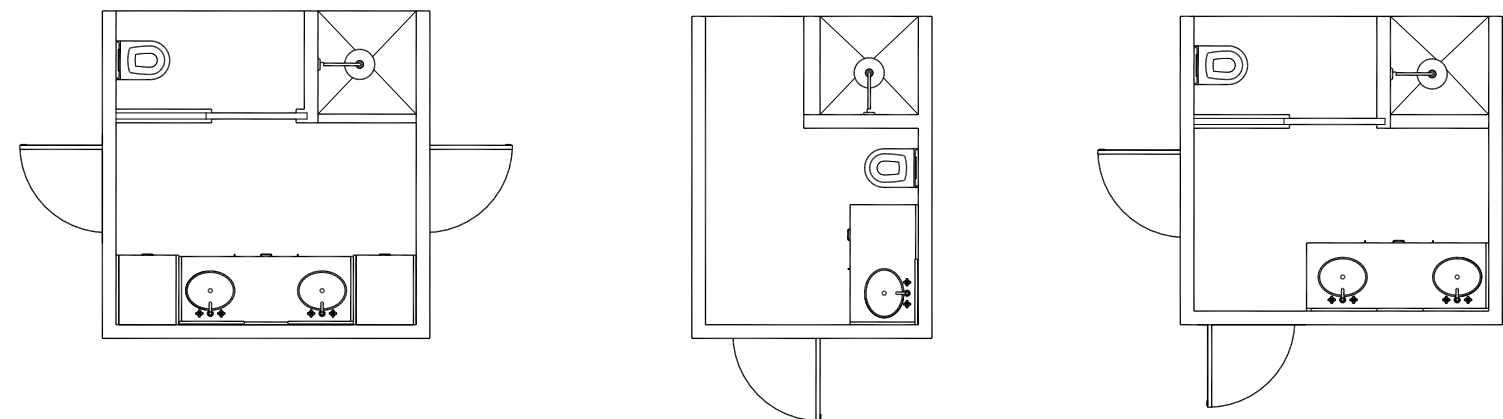


PREFABRICATED WATER CLOSETS

MOST UNITS SHARE BATHROOM UNITS WITH NEIGHBOR

SHARING SAVES SPACE AND RESOURCES

VALUABLE EXPERIENCE SHARING FOR LIVING WITH A FUTURE ROOMMATE





FIRST FLOOR

SUPPORT SPACES

1. COMPUTER RESEARCH LAB
2. LARGE CLASSROOM
3. CONFERENCE ROOM
4. COUNCILOR OFFICE
5. KITCHEN

COMMUNITY SPACES

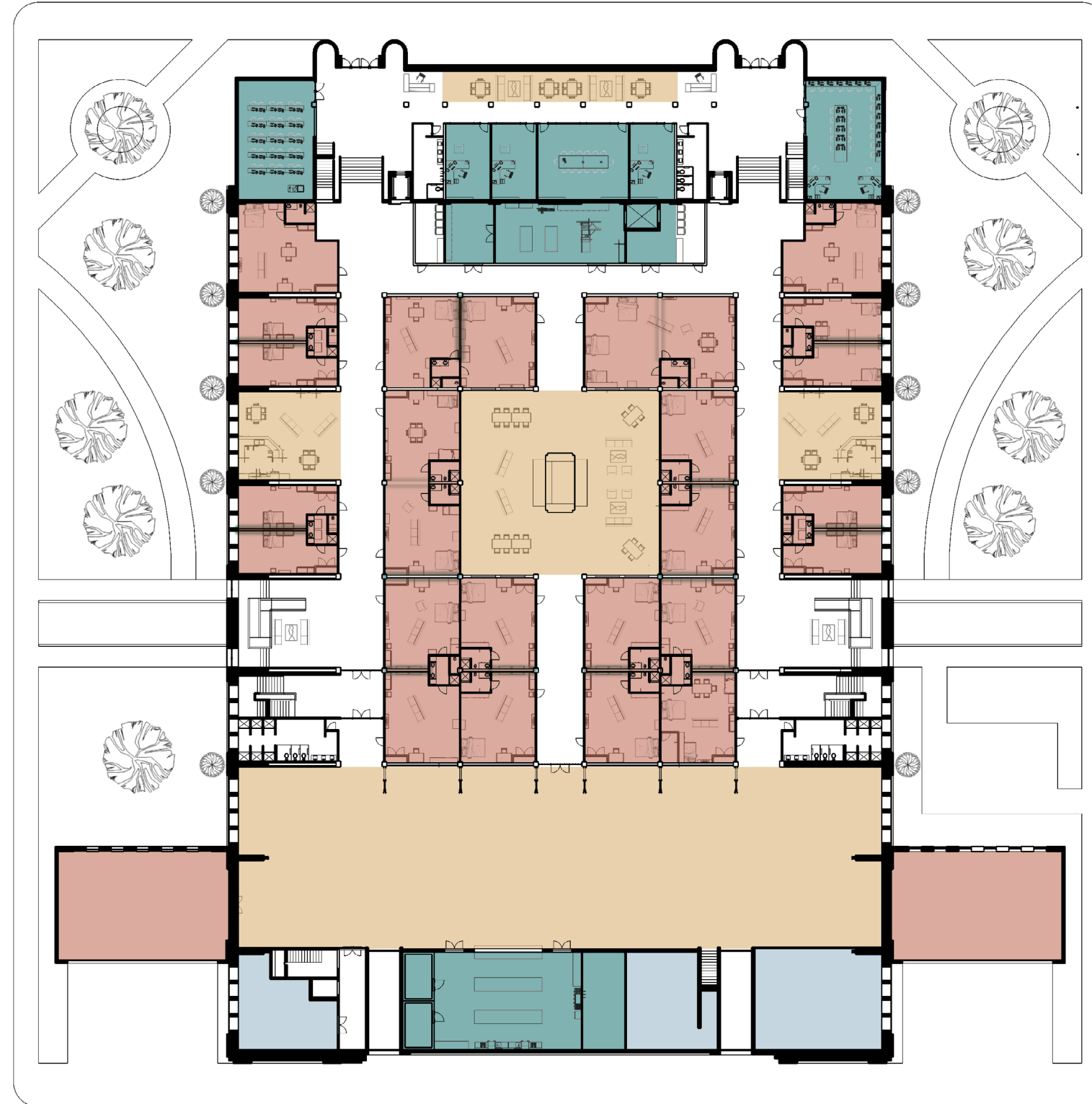
1. CENTRAL FIREPLACE COMMUNITY ROOM
2. NEIGHBORHOOD KITCHEN AND LOUNGES
3. WELCOME WAITING AREA
4. FLEXIBLE SMOOTH SPACE

RESIDENTIAL SPACES

1. SINGLE
2. DOUBLE
3. RESIDENT MANAGER
4. SEMI-OUTDOOR SLEEPING SPACES

STORAGE SPACES

1. FOOD AND KITCHEN STORAGE
2. DINING TABLE STORAGE



SECOND FLOOR

COMMUNITY SPACES

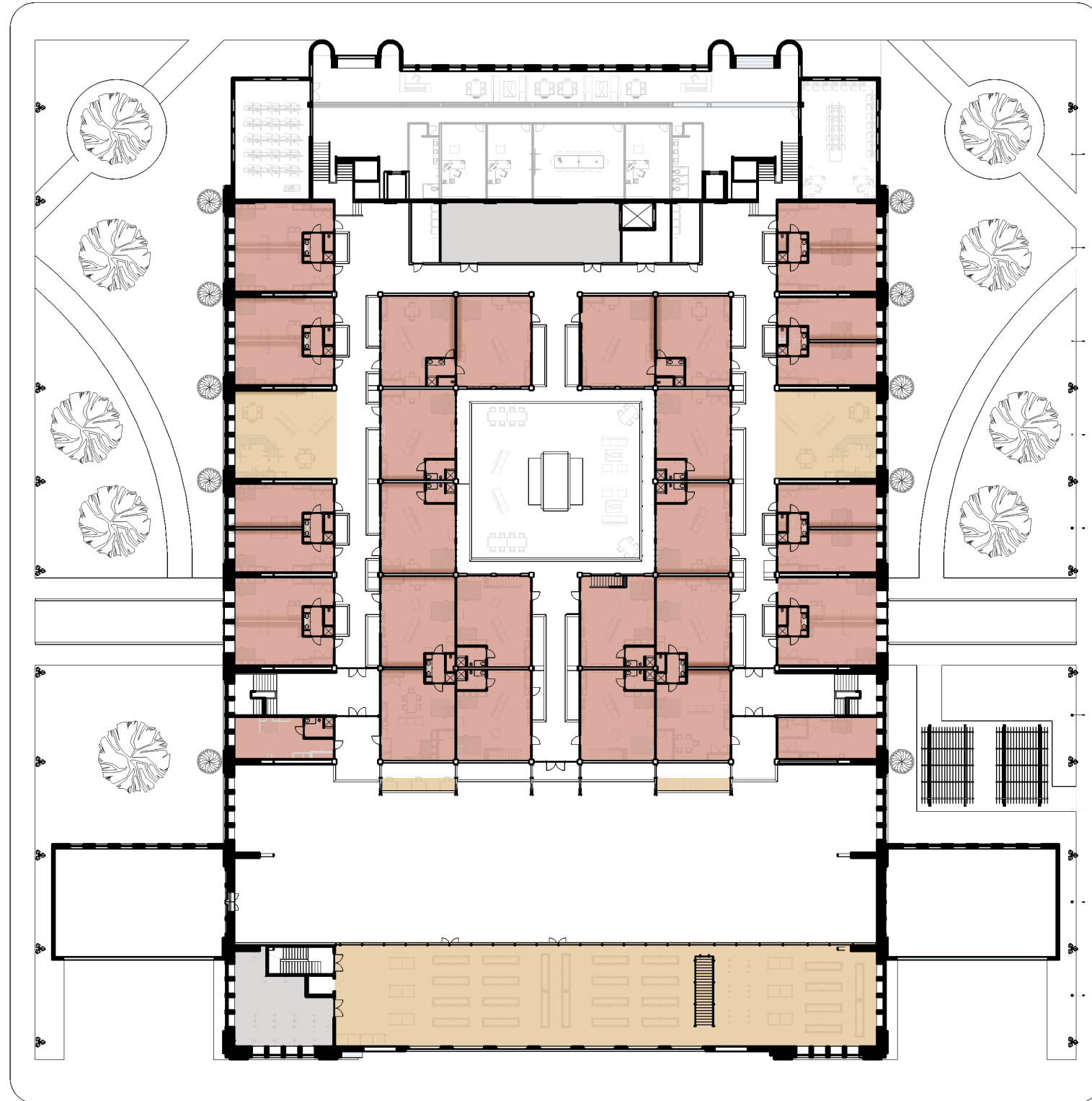
1. COMMUNITY GARDEN
2. NEIGHBORHOOD KITCHEN AND LOUNGES
3. CONVERSATION NOOKS

RESIDENTIAL SPACES

1. SINGLE
2. DOUBLE
3. LOFT
4. RESIDENT ASSISTANT

STORAGE SPACES

1. COMMUNITY GARDEN STORAGE
2. ADAPTABLE WALL MATERIAL STORAGE



THIRD FLOOR

SUPPORT SPACES

1. CASE WORKER OFFICES
2. PSYCHIATRIC PRACTITIONER OFFICES
3. FITNESS ROOM
4. ART CLASSROOM

COMMUNITY SPACES

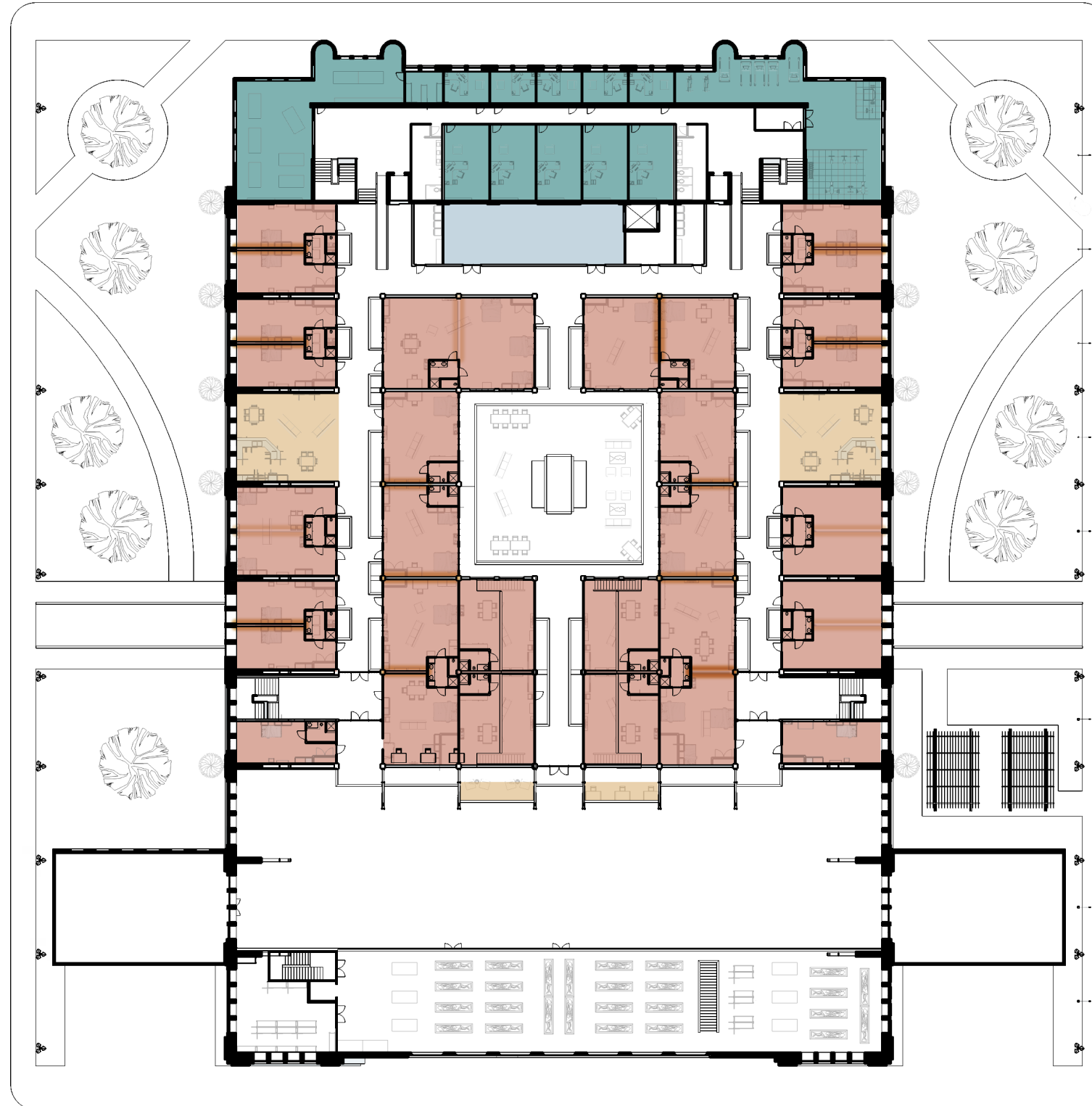
1. NEIGHBORHOOD KITCHEN AND LOUNGES
2. COMMUNITY WORK DESK SPACE

RESIDENTIAL SPACES

1. SINGLE
2. DOUBLE
3. LOFT
4. RESIDENT ASSISTANT

STORAGE SPACES

1. FURNITURE STORAGE



FOURTH FLOOR

SUPPORT SPACES

1. CASE WORKER OFFICES
2. PSYCHIATRIC PRACTITIONER OFFICES
3. CHILDREN'S PLAY ROOM
4. MUSIC ROOMS

COMMUNITY SPACES

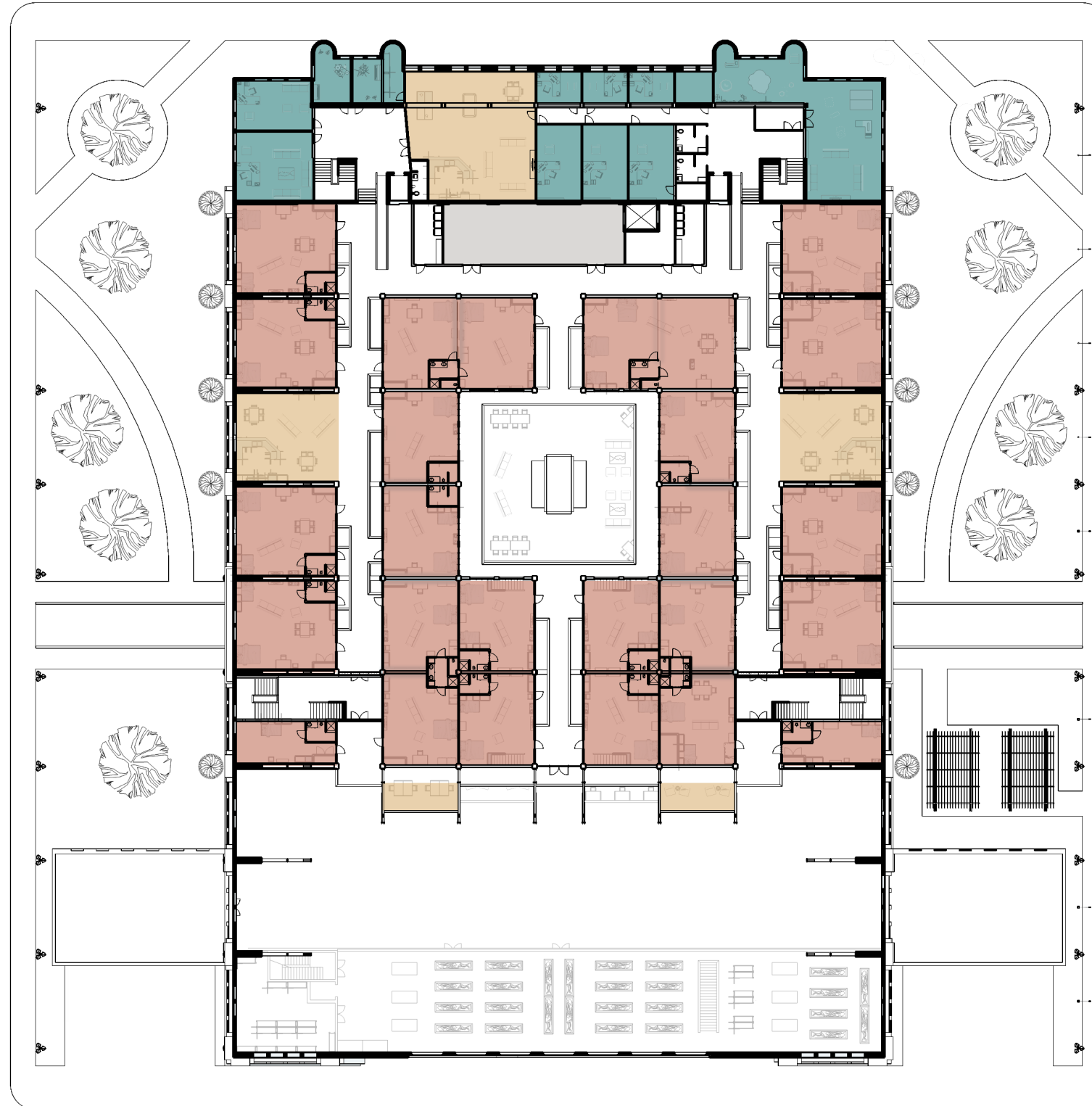
1. NEIGHBORHOOD KITCHEN AND LOUNGES
2. COMMUNITY WORK SPACE
3. READING SPACE
4. CHILD-FREE LOUNGE

RESIDENTIAL SPACES

1. DOUBLE
2. LOFT
3. RESIDENT ASSISTANT

STORAGE SPACES

1. CLOTHING STORAGE



FIFTH FLOOR

SUPPORT SPACES

1. LIBRARY
2. CASE WORKER OFFICES
3. CONFERENCE ROOM
4. COUNCILOR OFFICE
5. PERSONAL BREAKOUT SPACE

COMMUNITY SPACES

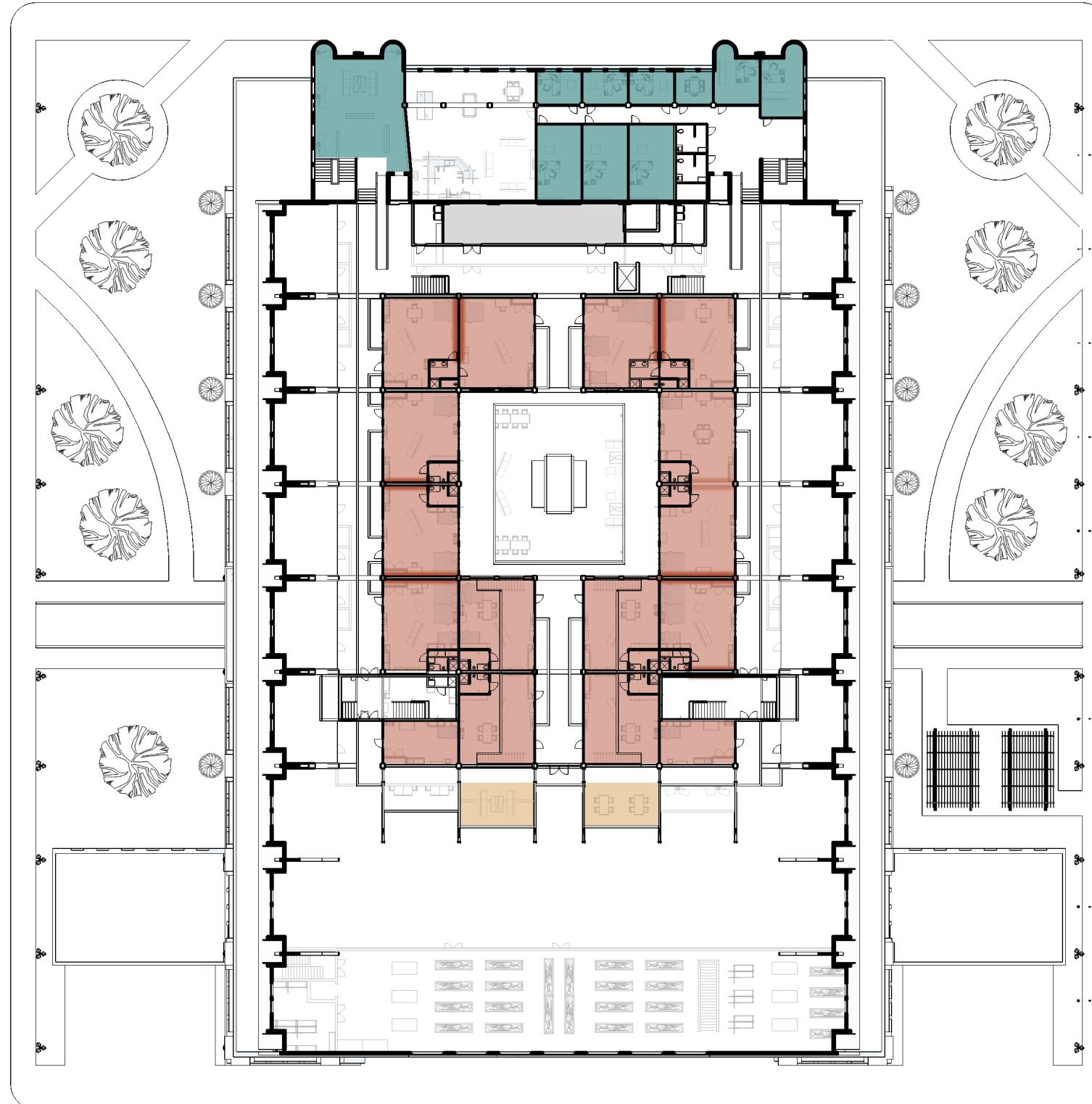
1. SMALL LOUNGE SPACE
2. COMMUNITY WORK DESK SPACE

RESIDENTIAL SPACES

1. DOUBLE
2. LOFT
3. RESIDENT ASSISTANT

STORAGE SPACES

1. HOME STARTER KIT AND PERSONAL ITEM STORAGE



SIXTH FLOOR

SUPPORT SPACES

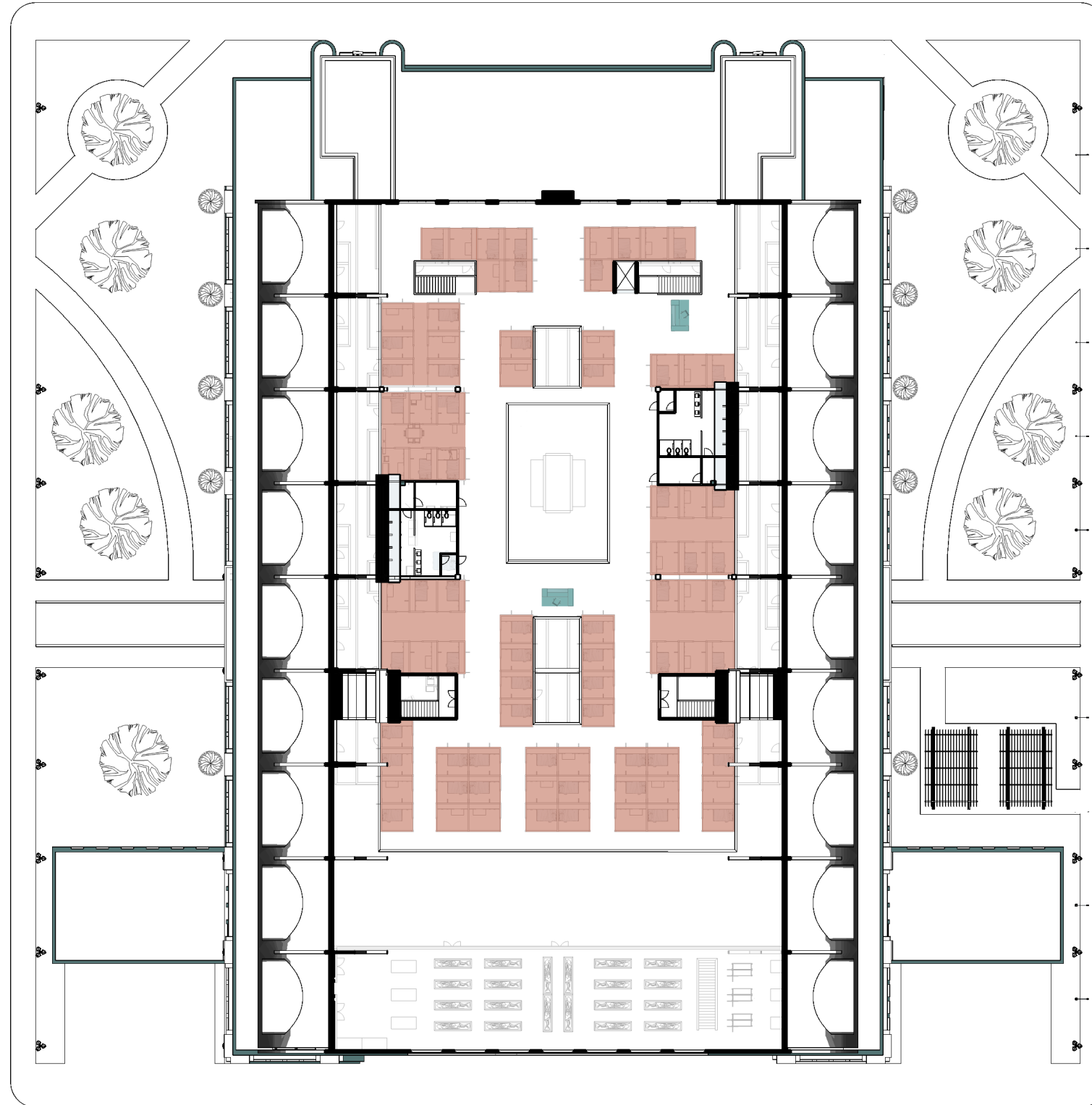
1. SUPERVISION STATIONS

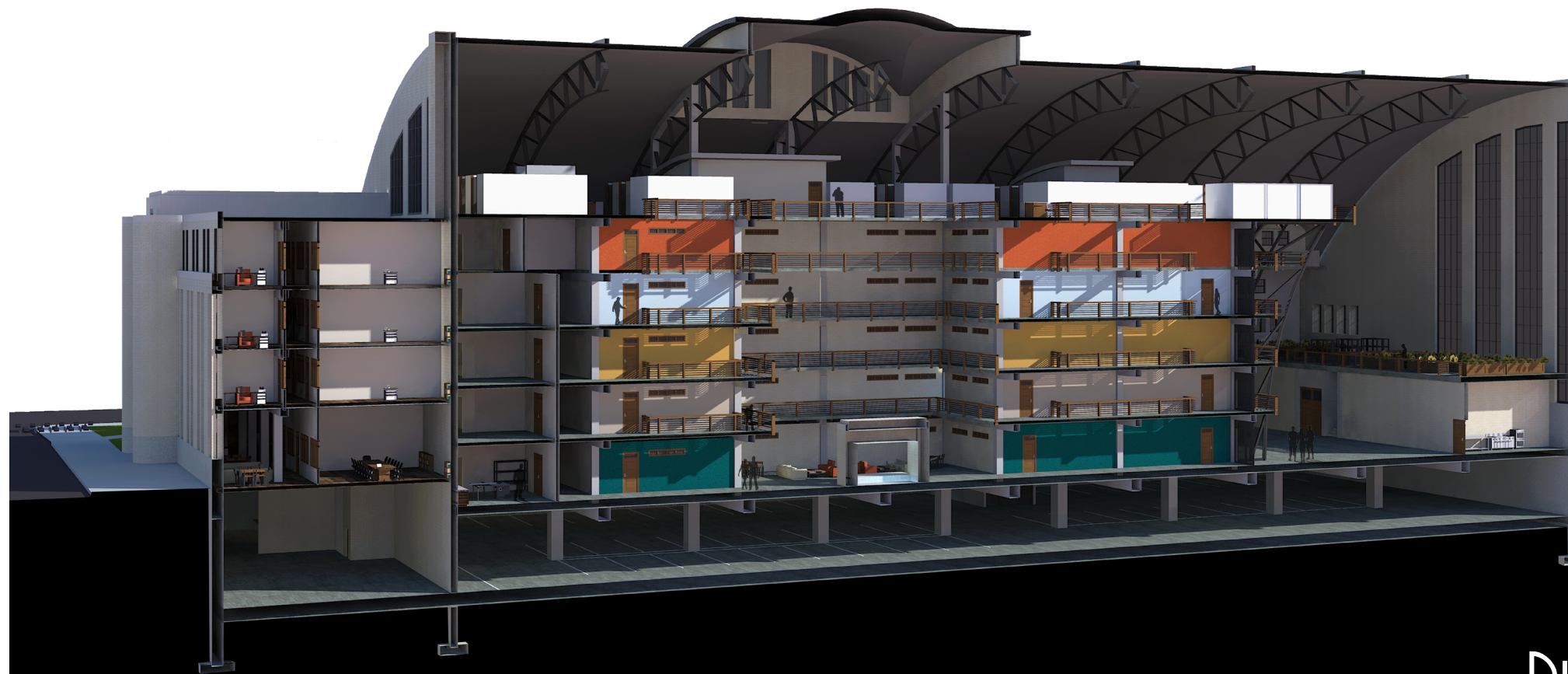
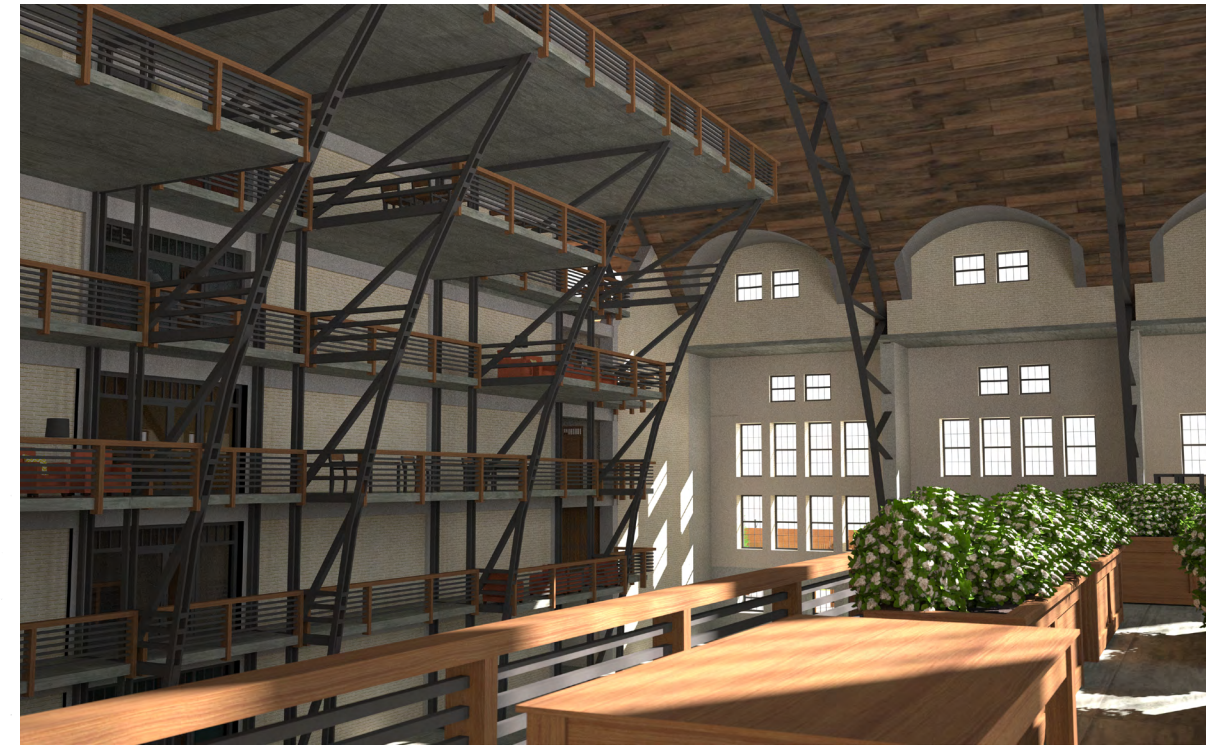
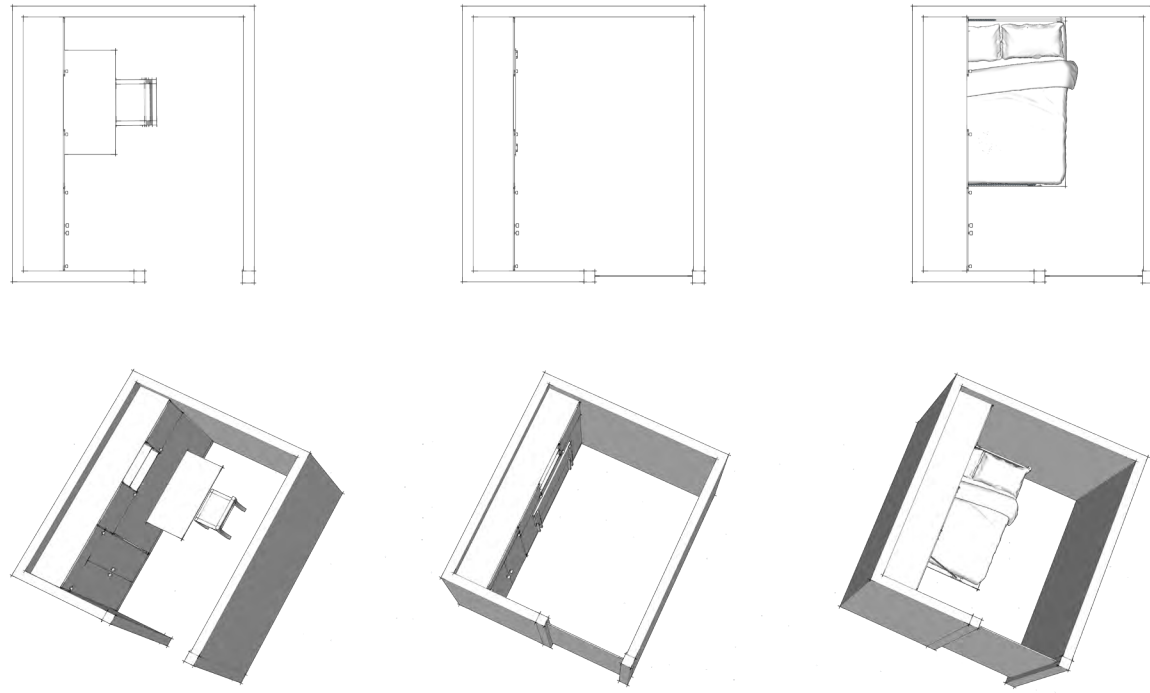
COMMUNITY SPACES

1. USE SPACES OF FIFTH AND FIRST FLOOR

RESIDENTIAL SPACES

1. OVERFLOW SLEEPING UNITS





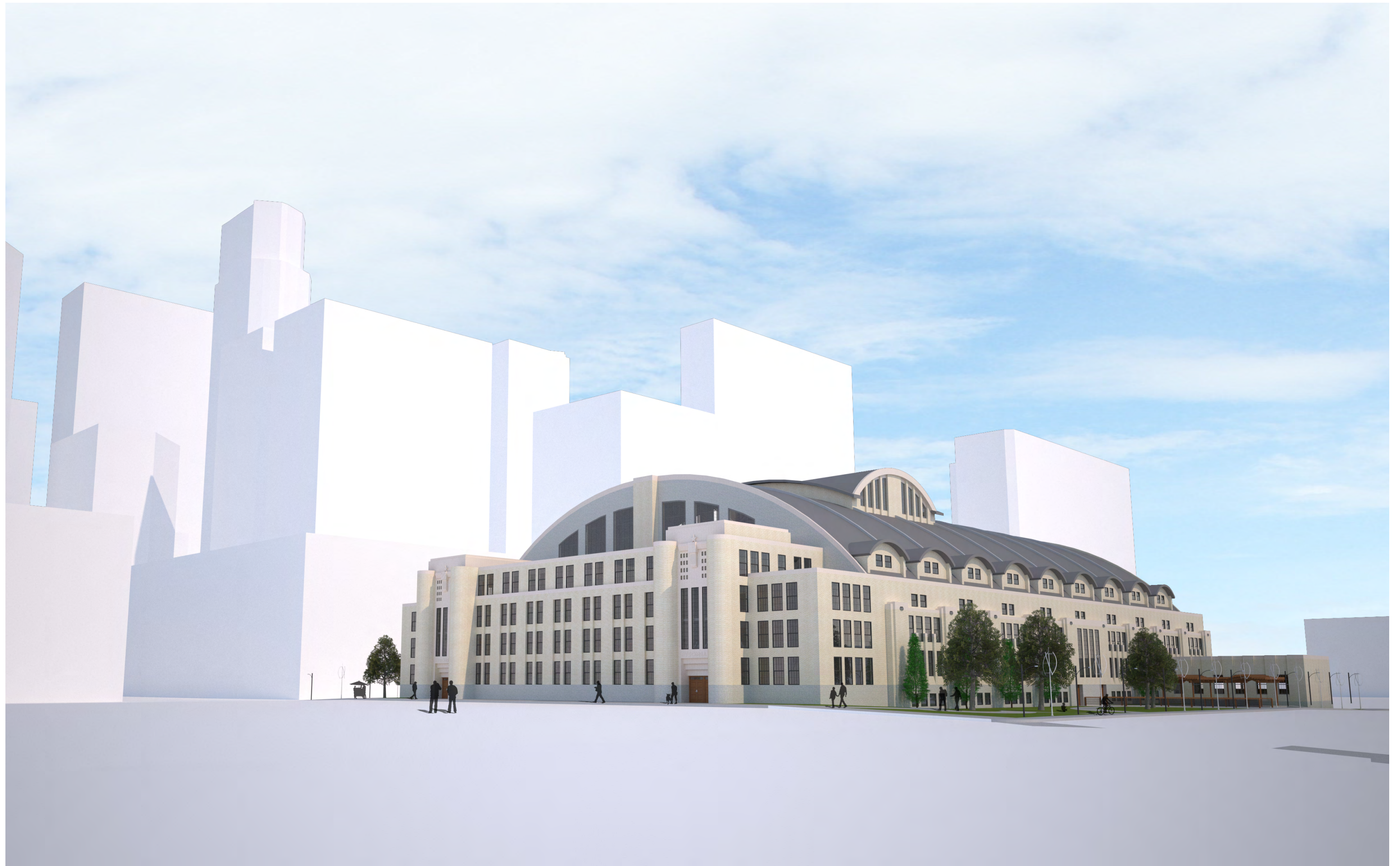
MANY HOMELESS SHELTERS HAVE ONLY ROWS OF BUNK-BEDS OR COTS FOR EMERGENCY SLEEPING SPACE. IN THE MINNEAPOLIS ARMORY EACH PERSON IS ALLOTTED A MURPHY BED WITH A LOCKABLE CLOSET TO KEEP THEIR VALUABLES SAFE. EACH UNIT ALSO HAS A TRANSLUCENT COLLAPSIBLE SCREEN TO ALLOW FOR SOME PRIVACY AND SAFETY.

DISCOVERING A PLACE OF EQUILIBRIUM

STRUCTURAL TRANSPARENCY



-  AIR RETURN
-  AIR SUPPLY
-  PLUMBING



≡ THANK YOU FOR YOUR TIME ≡

