



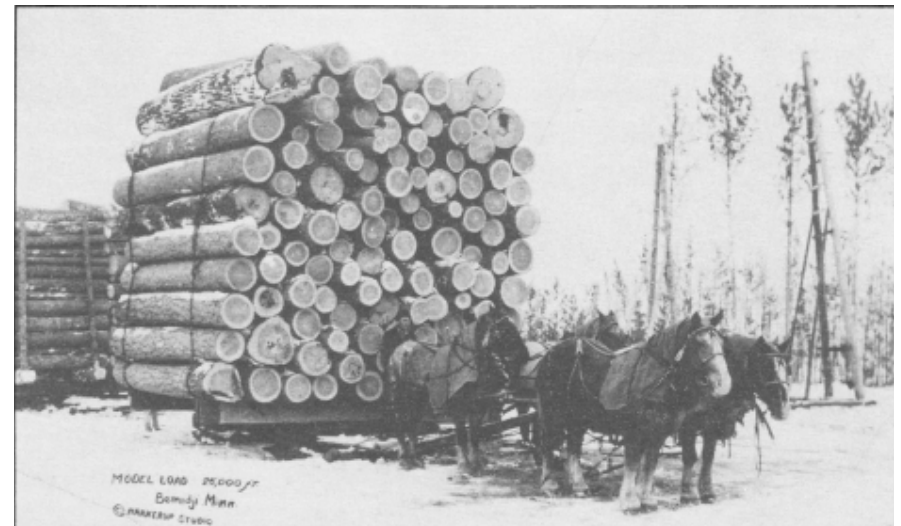
# CULTURAL CONFLUENCE: A SPIRITED LEARNING ENVIRONMENT

# GUIDING PRINCIPLES

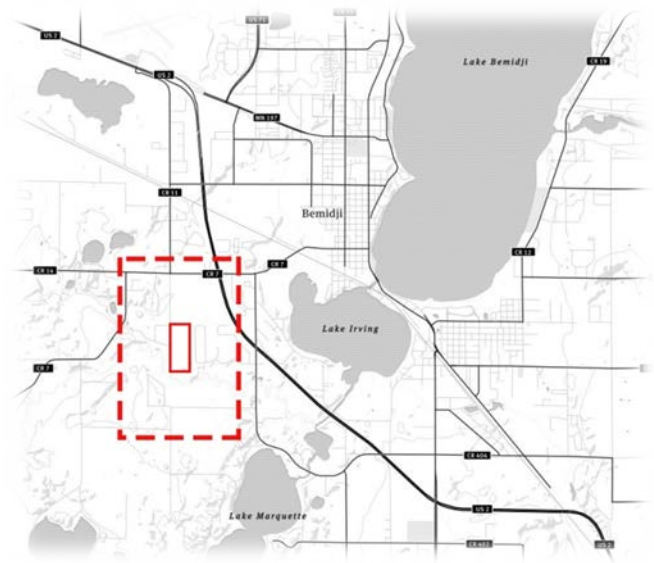
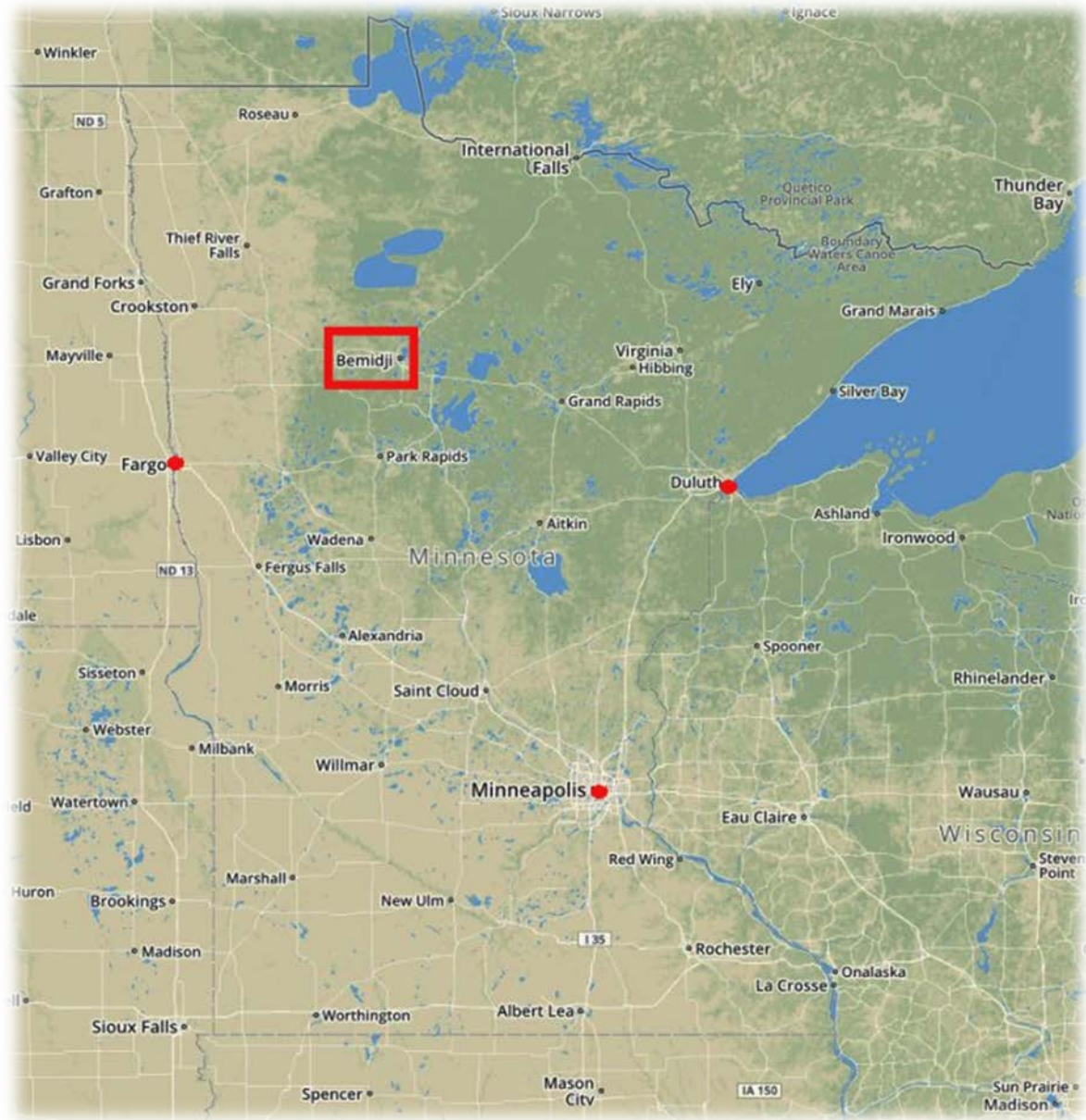
1. Identification of student learning methods that push the development of today's students.
2. Integration of traditional and 21<sup>st</sup> century learning environments in an architectural setting.
3. Creation of a space in which its users feel engaged, safe, and inspired within the school community.
4. Incorporation of Native American and Non-Native traditions and cultures to unify the community of Bemidji Public Schools.

# CONNECT

The history of Bemidji has taken it from a small village to a booming city of commerce. This expansion has resulted in a constantly growing school district with a large influence from the Cass Lake Indian Reservation.

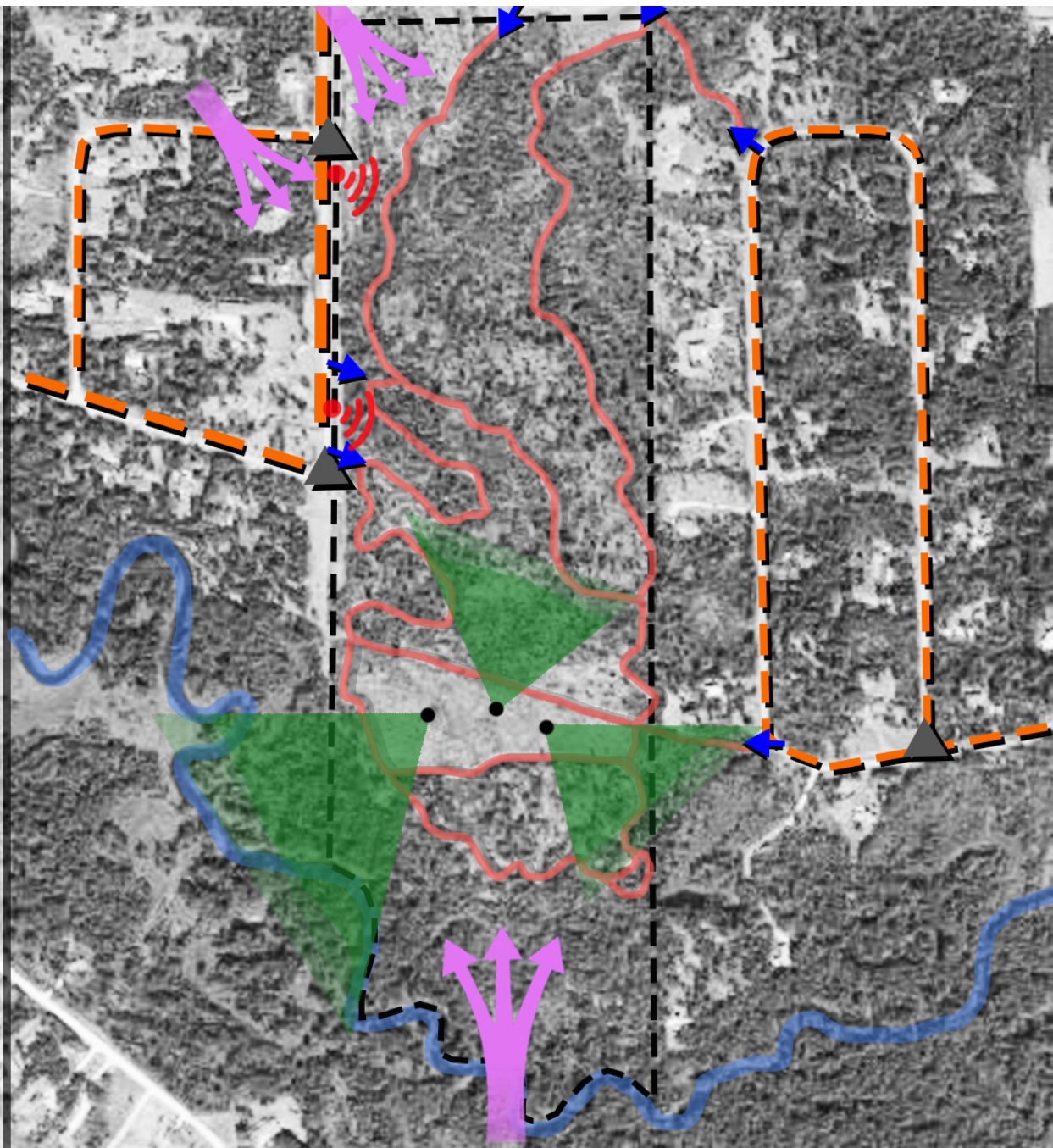


# SITE INFORMATION



# KEY

- Site Boundary
- Primary Vehicle Traffic
- Secondary Vehicle Traffic
- Intersection
- Pedestrian Access
- Noise Pollution
- View Sheds
- River
- Walking Trail



# PROPOSED SITE PLAN



Existing High School

Residential Neighborhood

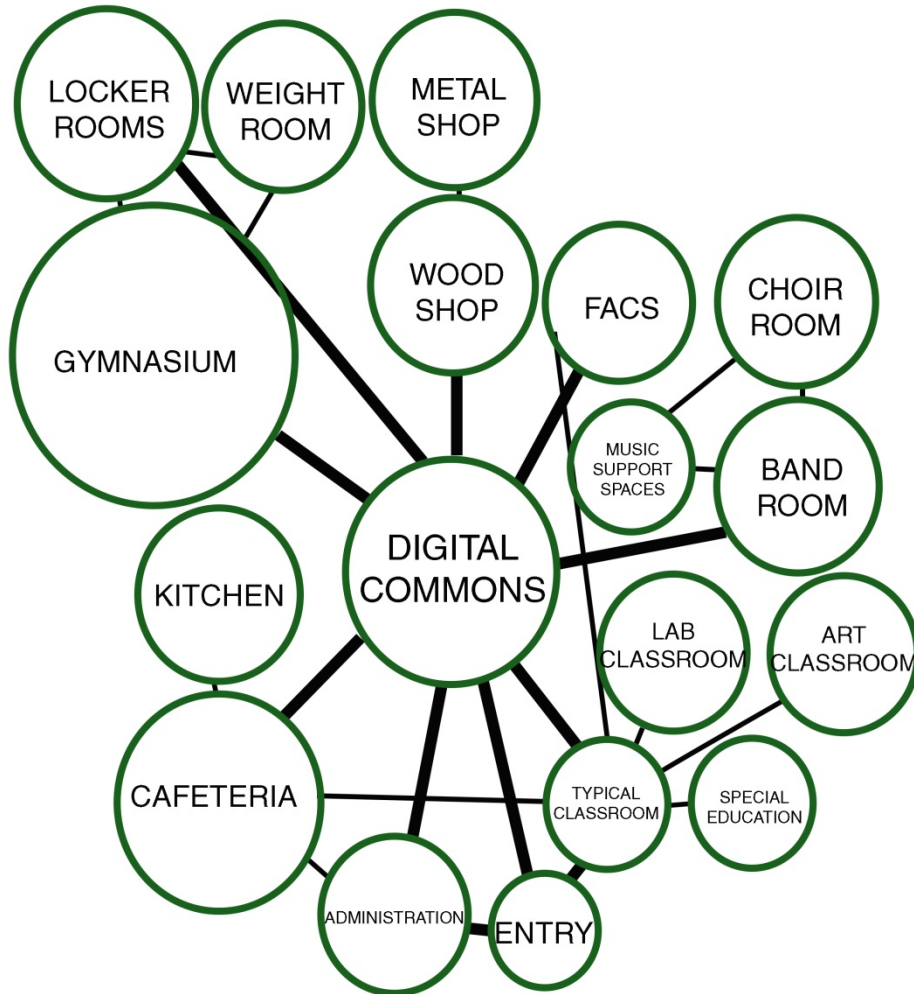
Hwy 71

Residential Neighborhood

Mississippi River



# RELATIONSHIP GRAPHIC



Architectural solutions and programmatic relationships respond to the shifting needs of today's learning from traditional to 21<sup>st</sup> century learning environments.



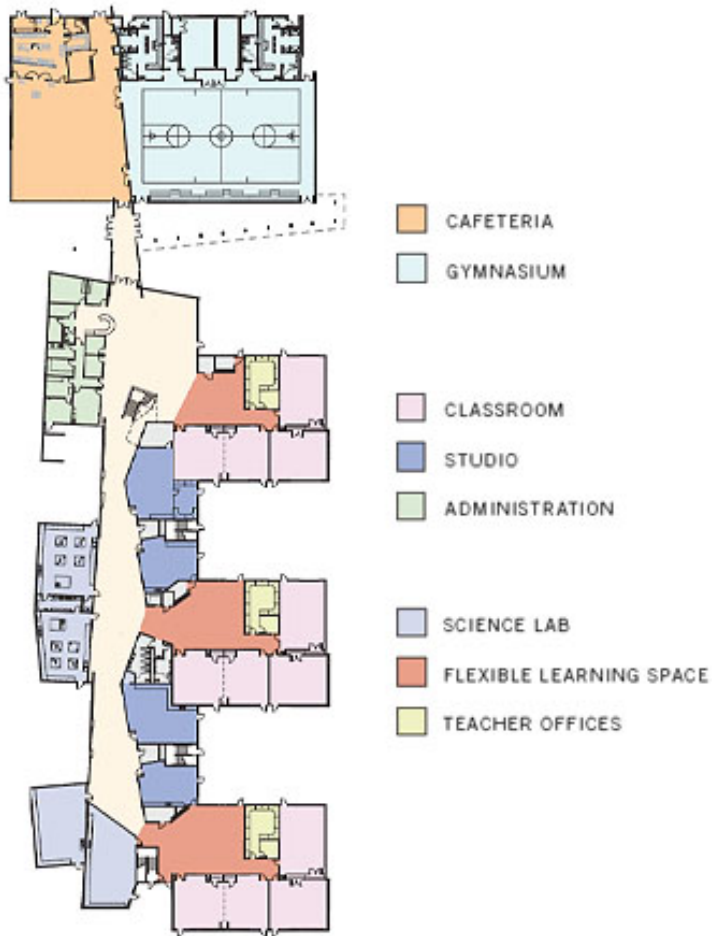
# CASE STUDY – MILLE LACS

Spiritual Stimulation, Structural Elegance, and Materiality...



# CASE STUDY – STAPLETON HS

Technology, Organization, and Hierarchy...



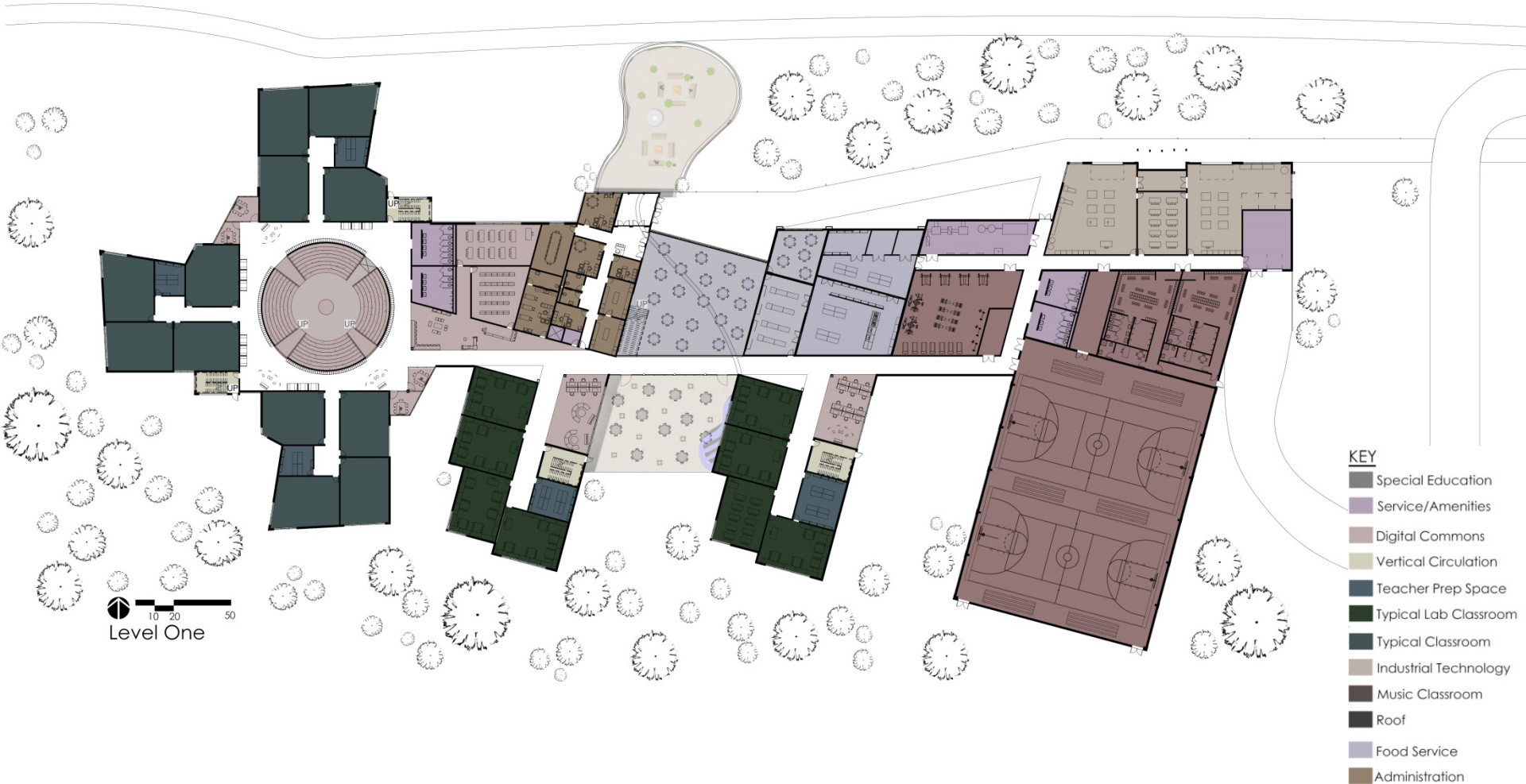
# CASE STUDY – ROSA PARKS ES

Community, Exterior Details, and Unique...





# FLOOR PLAN-LEVEL ONE



# FLOOR PLAN-LEVEL TWO



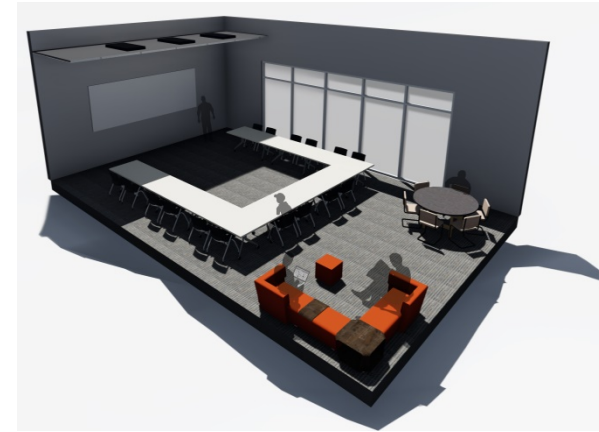
# INTEGRATE - CLASSROOM DESIGN



Traditional lecture-based instruction allows students to be individually engaged and task oriented.

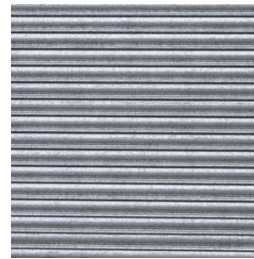
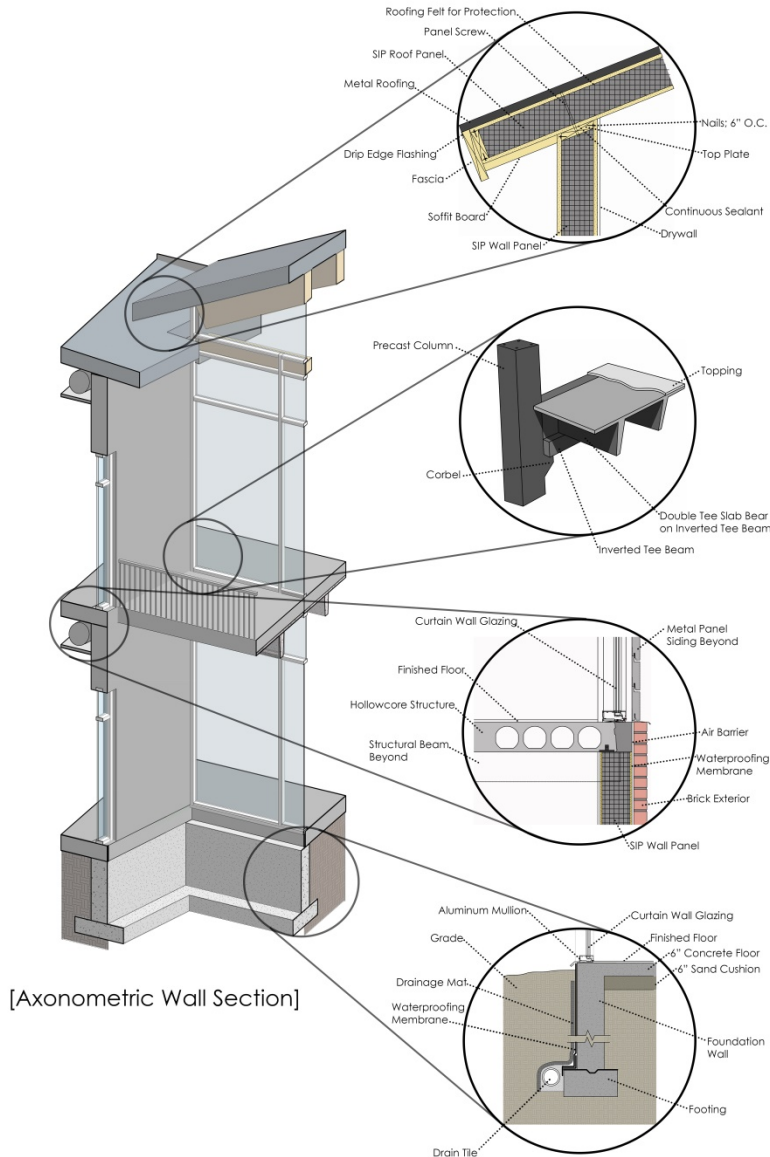


Tables can be arranged to promote group oriented projects and collaboration among peers.



Arranging a U-shape allows for groups to present projects and information to the rest of the class.

# DETAILS AND MATERIAL PALETTE



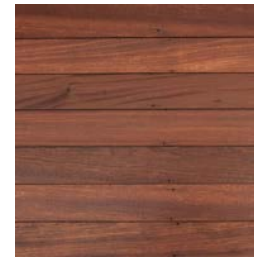
Corrugated Metal Panel



Batten Seam Metal Roofing



Red Brick



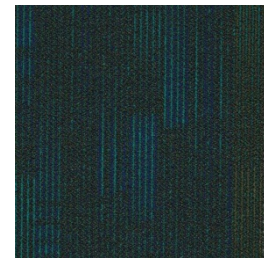
Hardwood Siding



Wood LVT Flooring



Glulam Member



Accent Carpet Tile



Carpet Tile

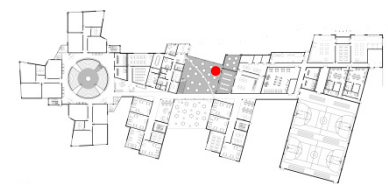


Stone Tile



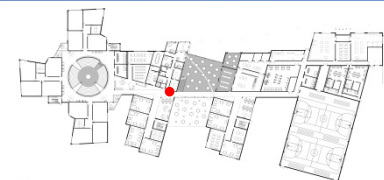


CONNECT [Cafeteria]



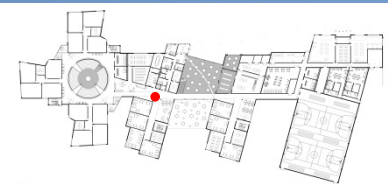


[Lab Breakout Space]



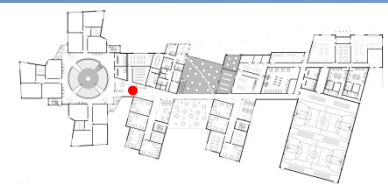


[Digital Commons]



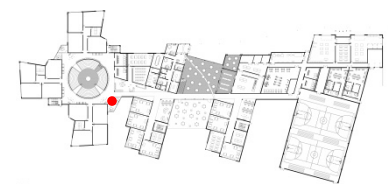


[Digital Commons Seating]



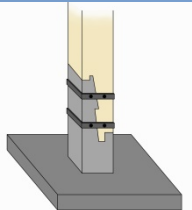
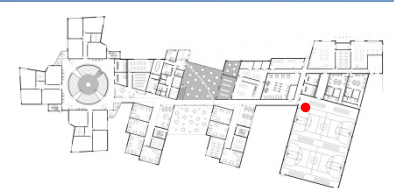


[Classroom Breakout Space]





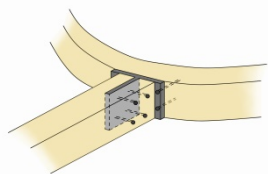
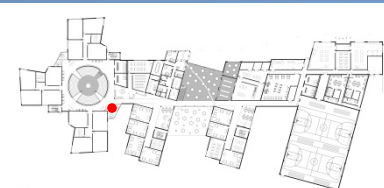
	19:27	
HOME	116	GUEST
FOULS	12	FOULS
REBOUNDS	23-4	REBOUNDS
POINTS	43	POINTS



EXPRESS [Recreational Gymnasium]

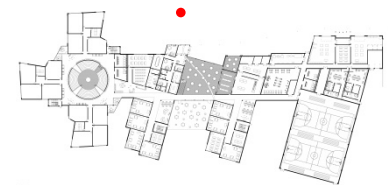


CELEBRATE [Pow Wow/Lecture Hall]





[Outdoor Patio]







THANK YOU!