

Joining Man and Cosmos:
A Pinnacle Observatory in South Fork, Colorado

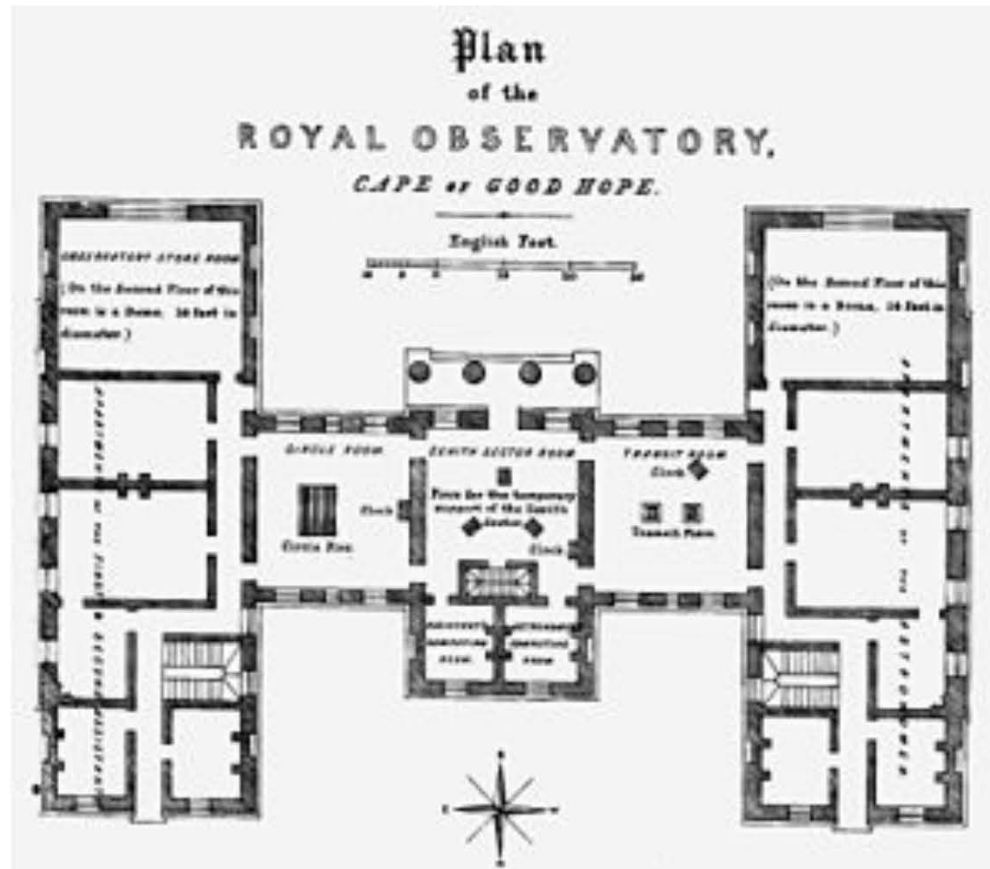


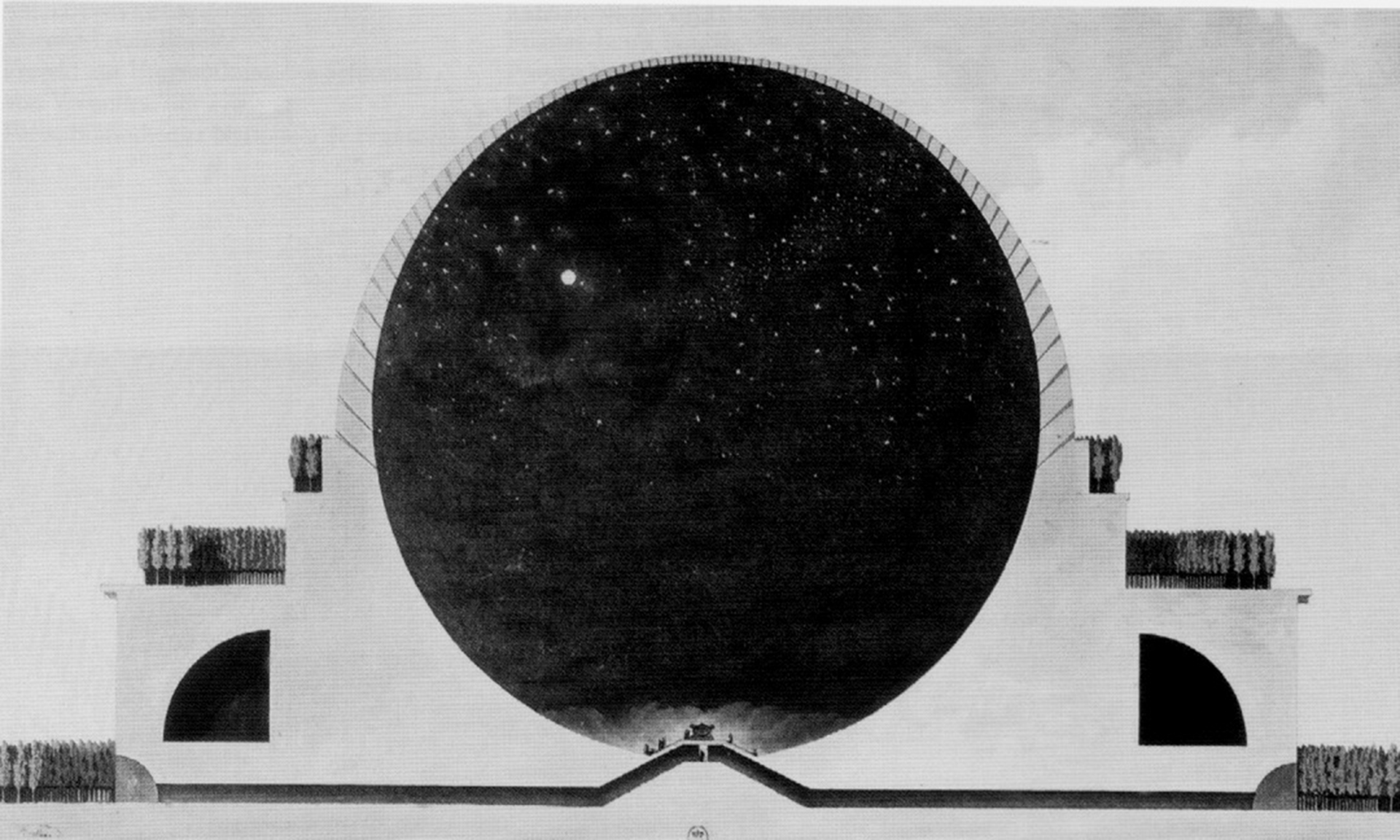






Cologne Cathedral- Barbara Schock-Werner
Cologne Germany



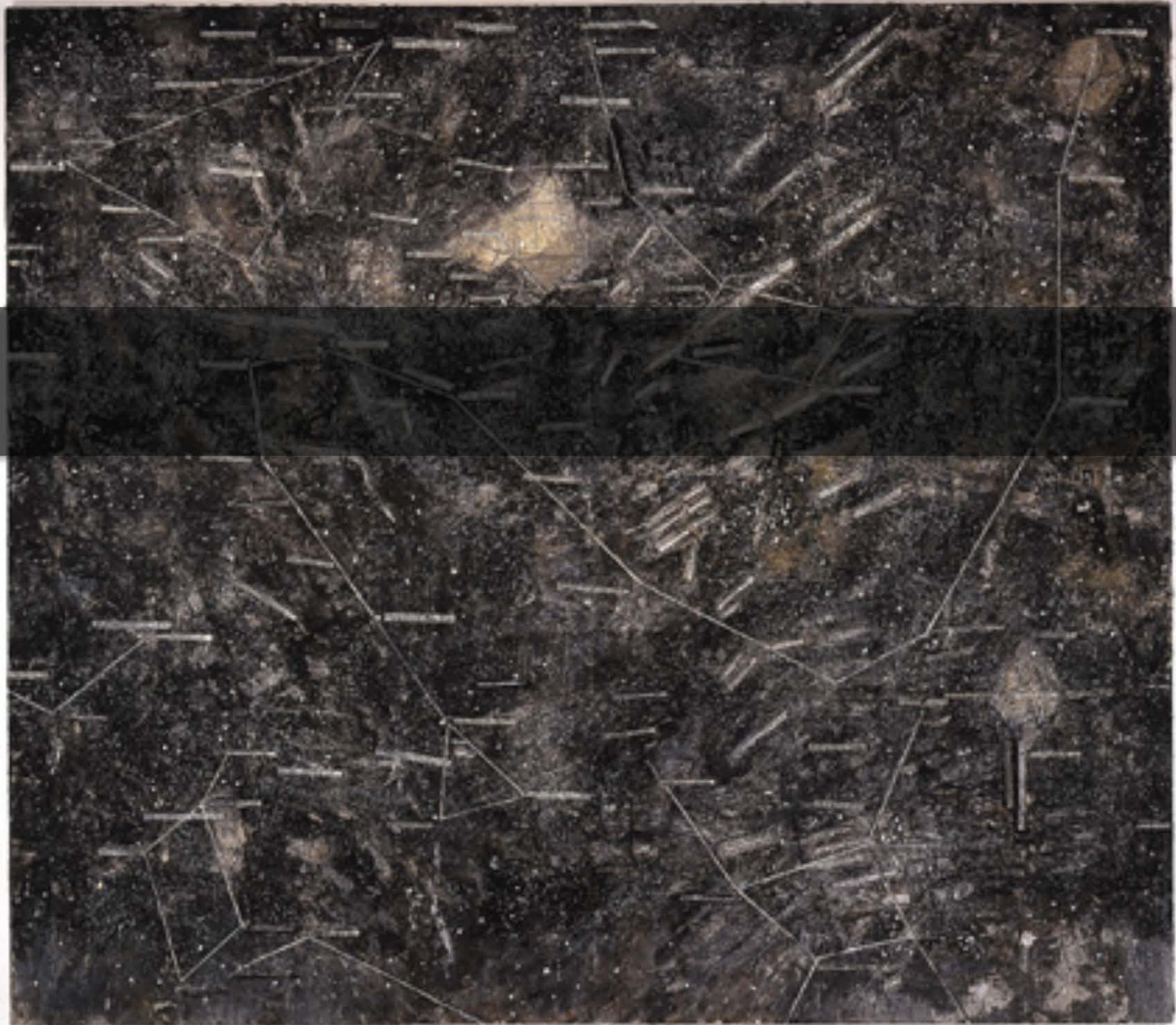


Anselm Kiefer:
"The Secret Life of Plants"

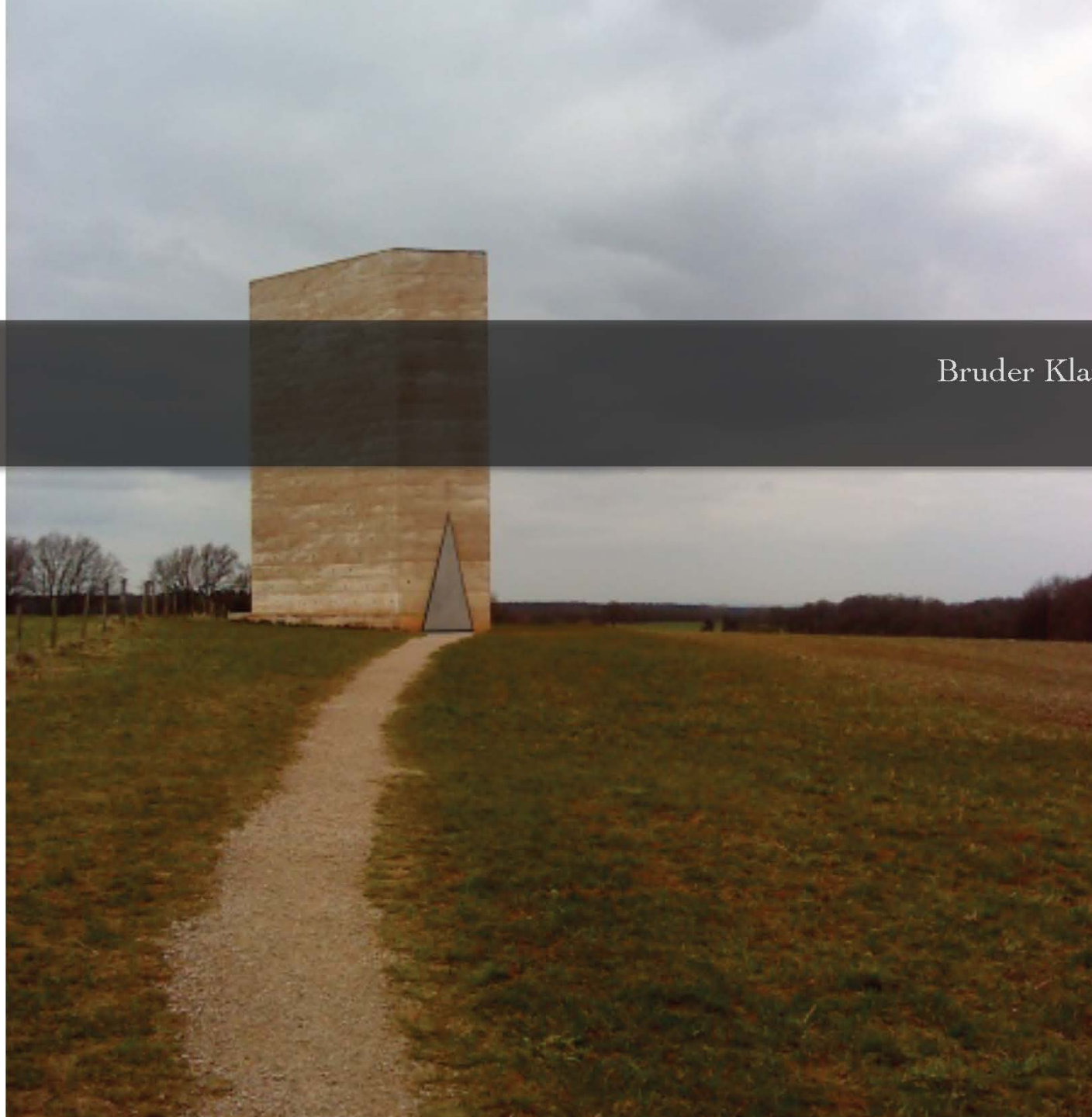


Anselm Kiefer:
"Sternenfall"

049495+022737255B2p50K1

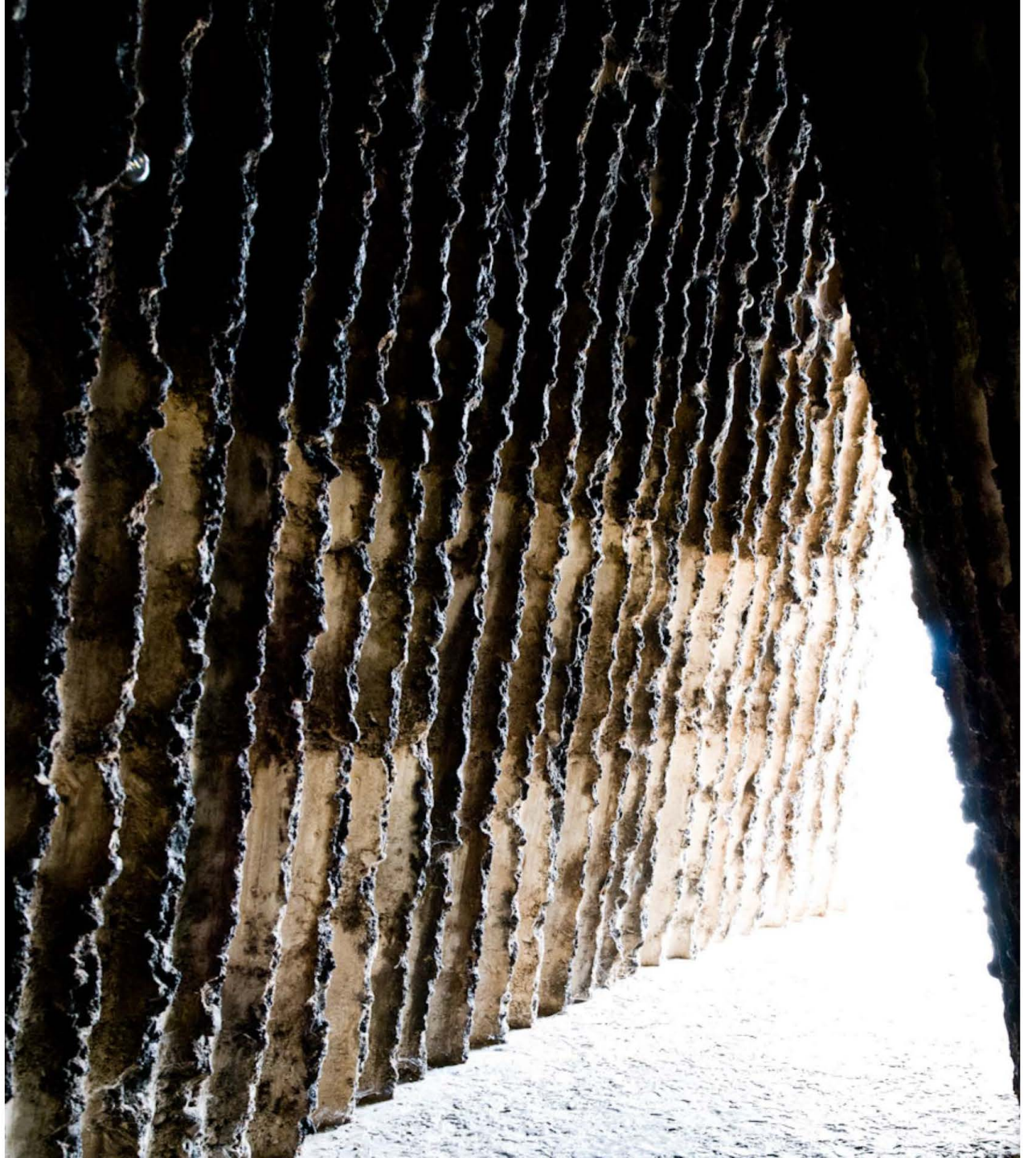


Anselm Kiefer:
"Sternenfall"



Bruder Klaus Field Chapel- Peter Zumthor
Mechernich, Germany

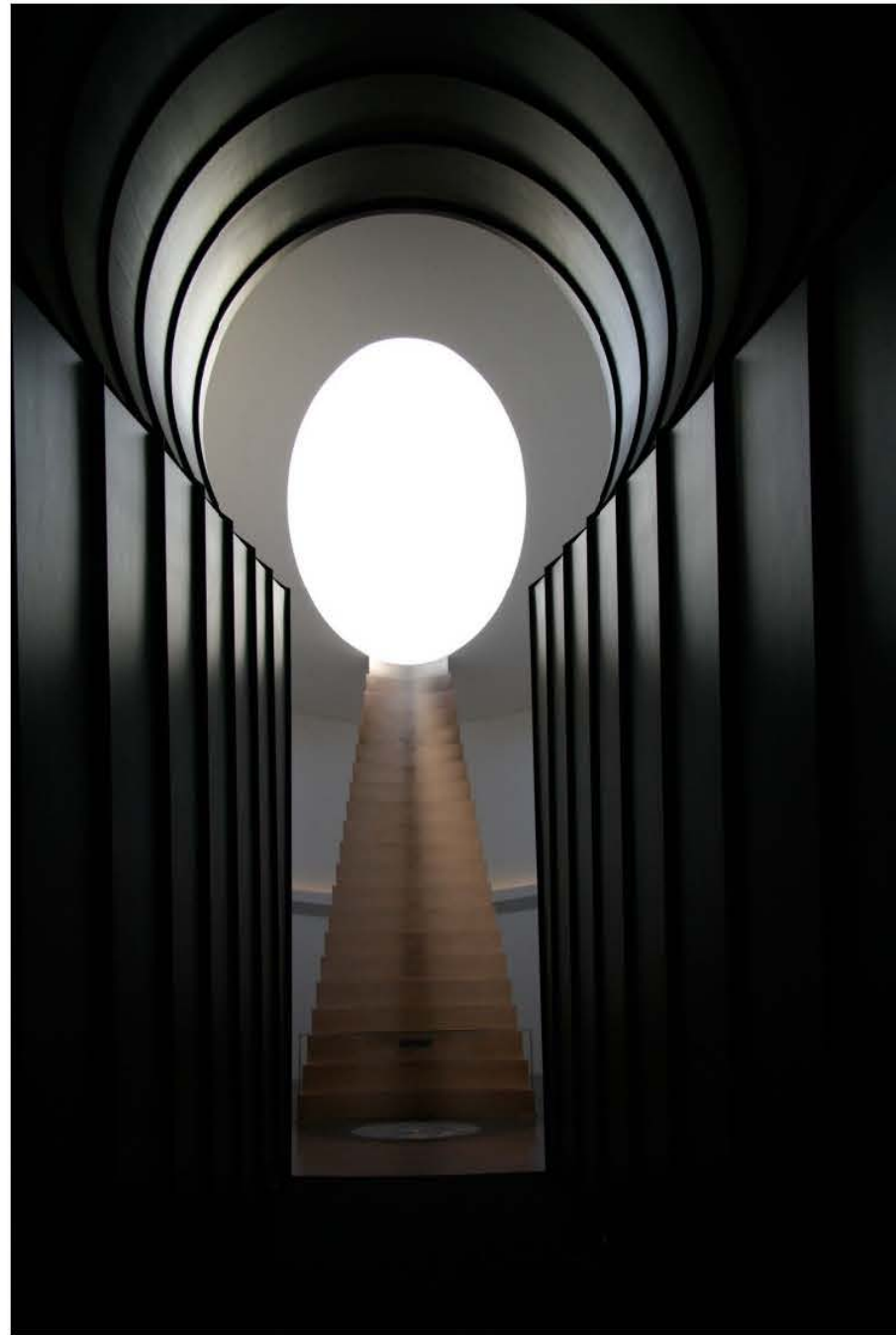






Roden Crater- James Turrell
Flagstaff, Arizona

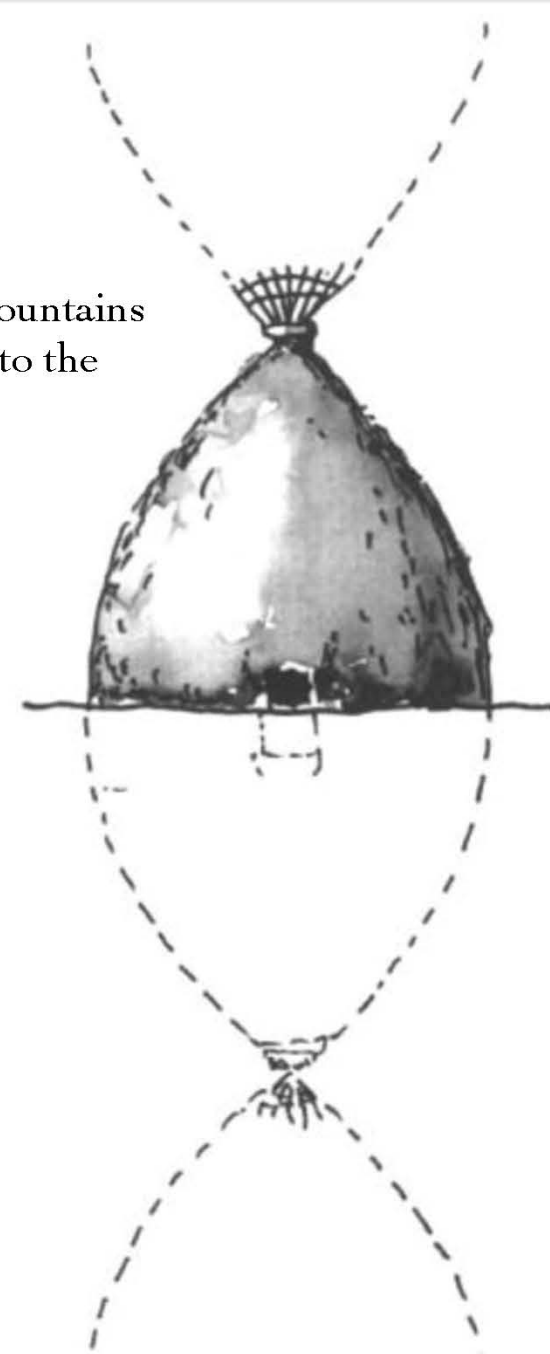


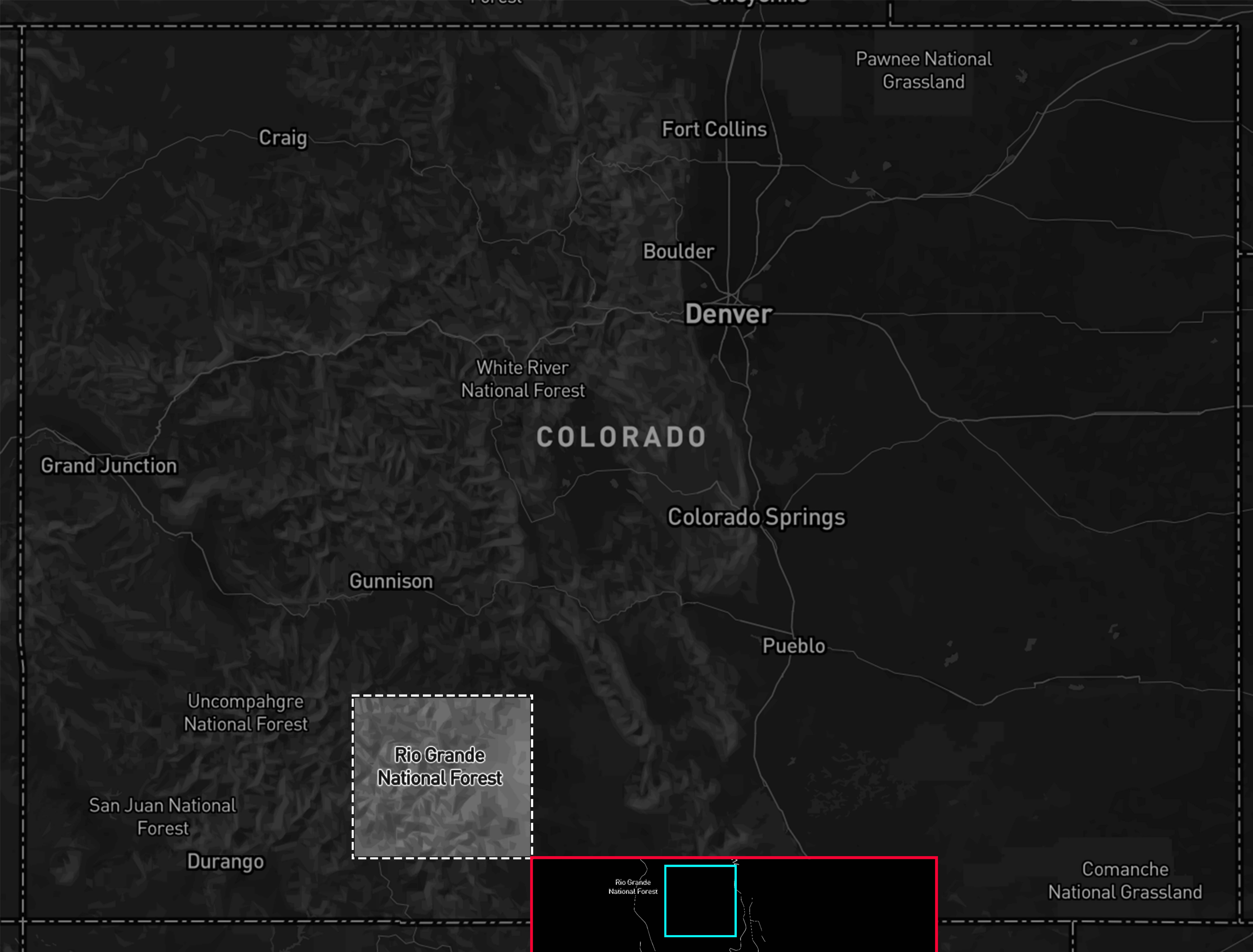


The Ute people are the oldest residents of Colorado. Inhabiting the mountains majority of the year. Mountains are believed to be sacred to them because it is where the earth and sky meet.



The Kogi's and people of Colorado see temple, houses and mountains to be sacred because they believe the form is repeated above to the cosmos.





SOUTH FORK COLORADO BALANCES BETWEEN THE RIO GRANDE NATIONAL FOREST AND THE RIO GRANDE RIVER IN SOUTH-CENTRAL COLORADO. A PINNACLE OBSERVATORY IS BOTH BRIDGE AND LADDER.

