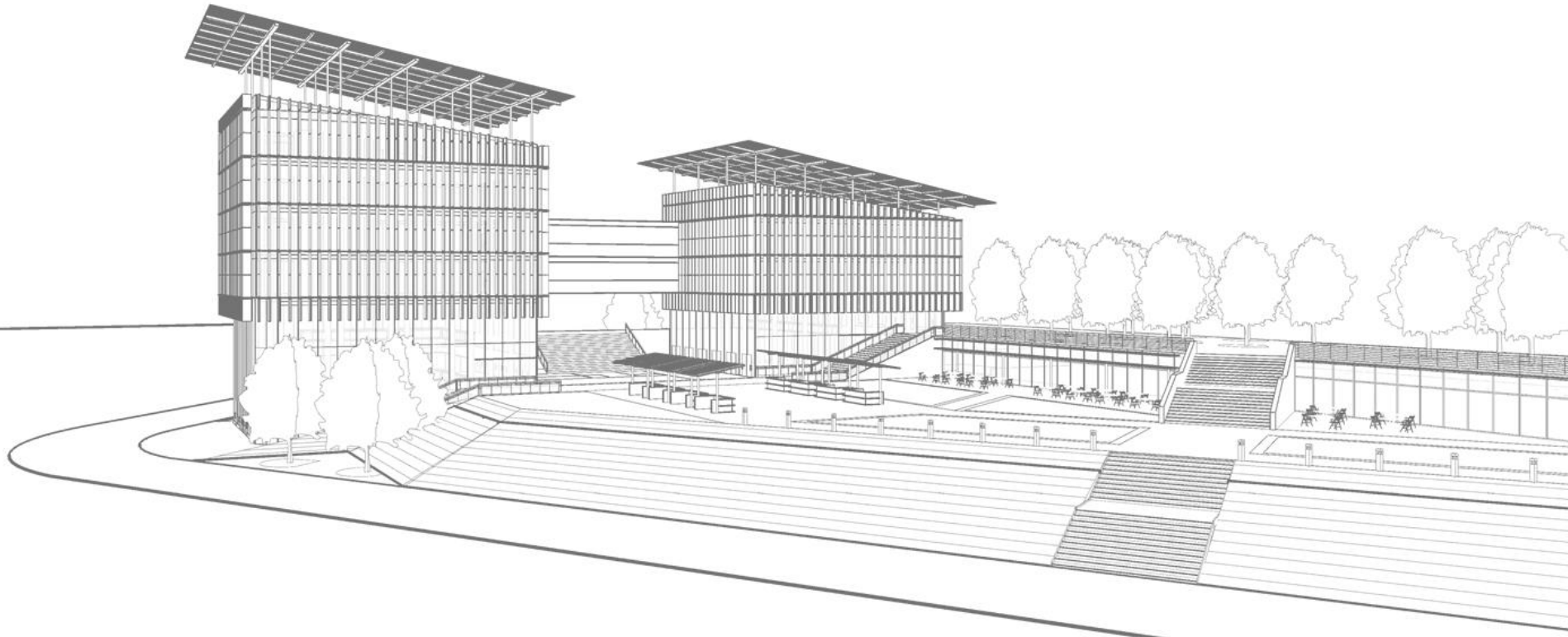


COMMON  
CULTURE  
KELLEN PLUTOWSKI



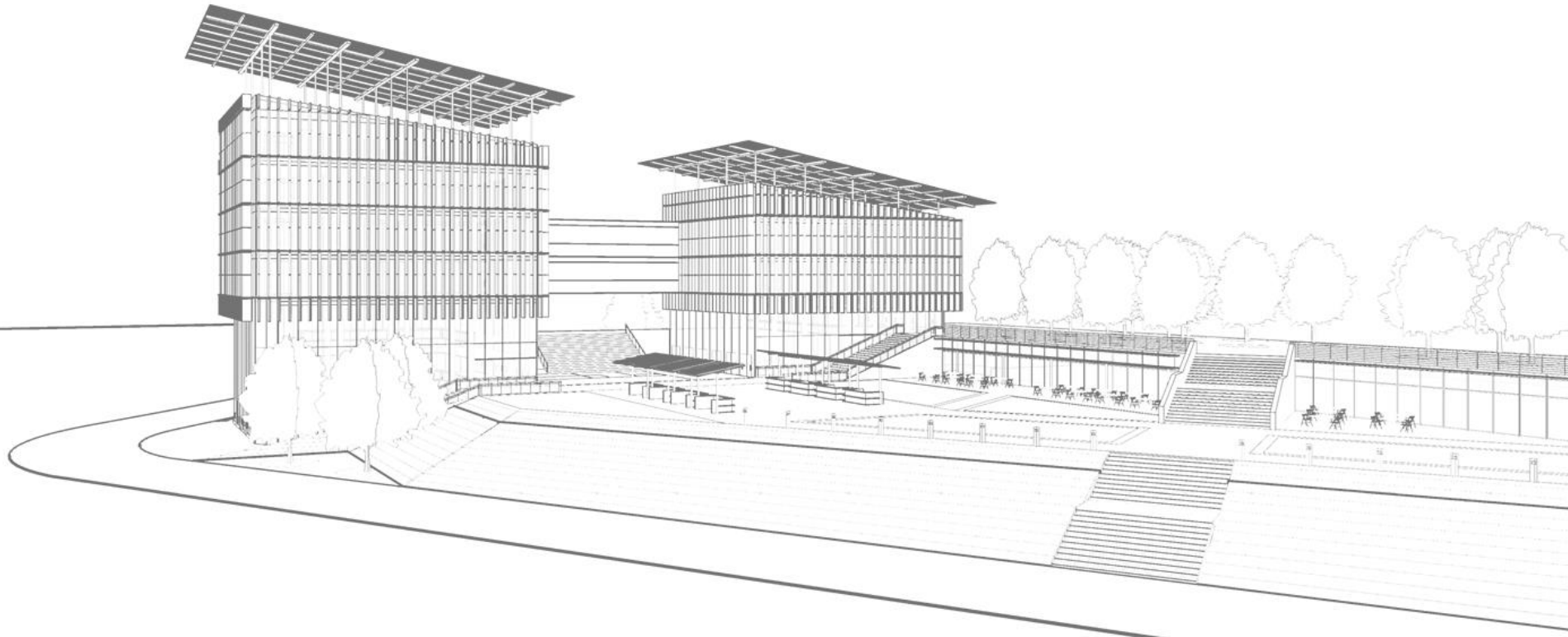
# THESIS NARRATIVE

- The influence of public spaces in urban life have been an issue that has been apparent since the formation of ancient cities.



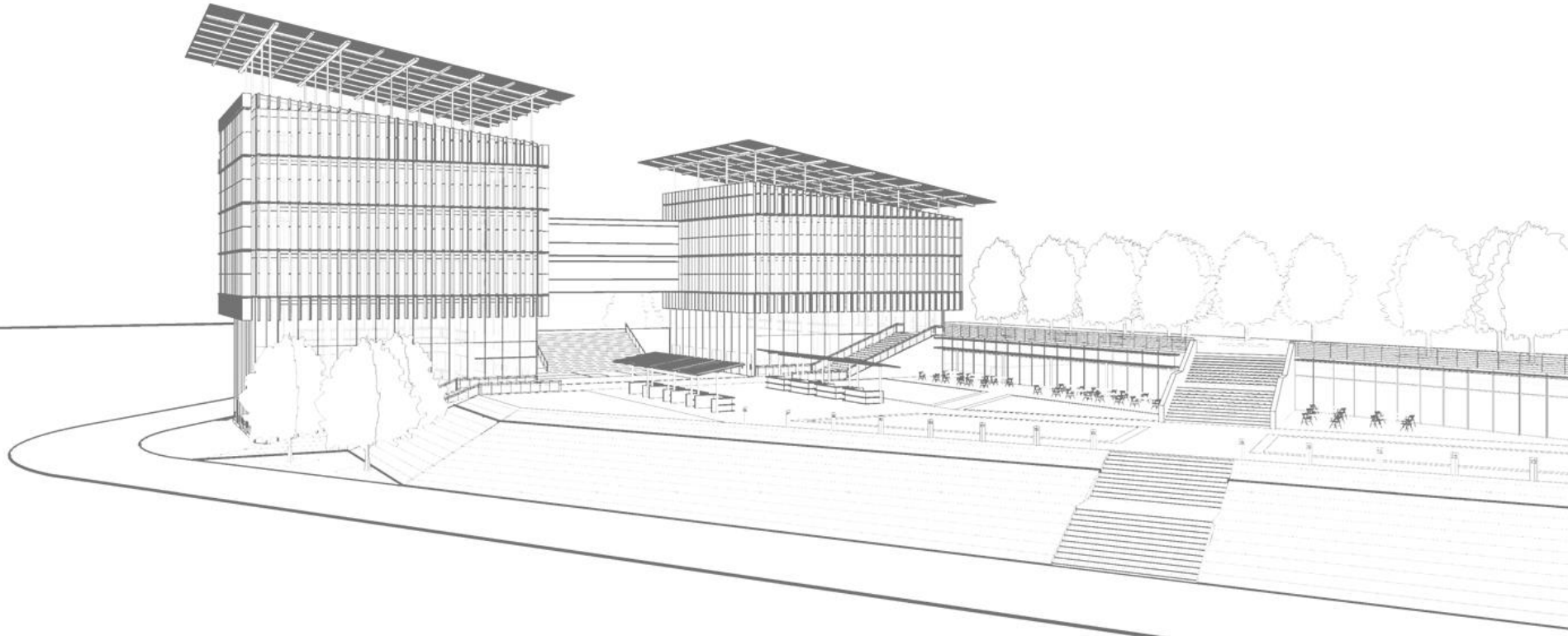
# THESIS NARRATIVE

- The influence of public spaces in urban life have been an issue that has been apparent since the formation of ancient cities.
- These spaces allow opportunities to socialize, interact, and exchange ideas which allow members of a community to contribute to their cities development.



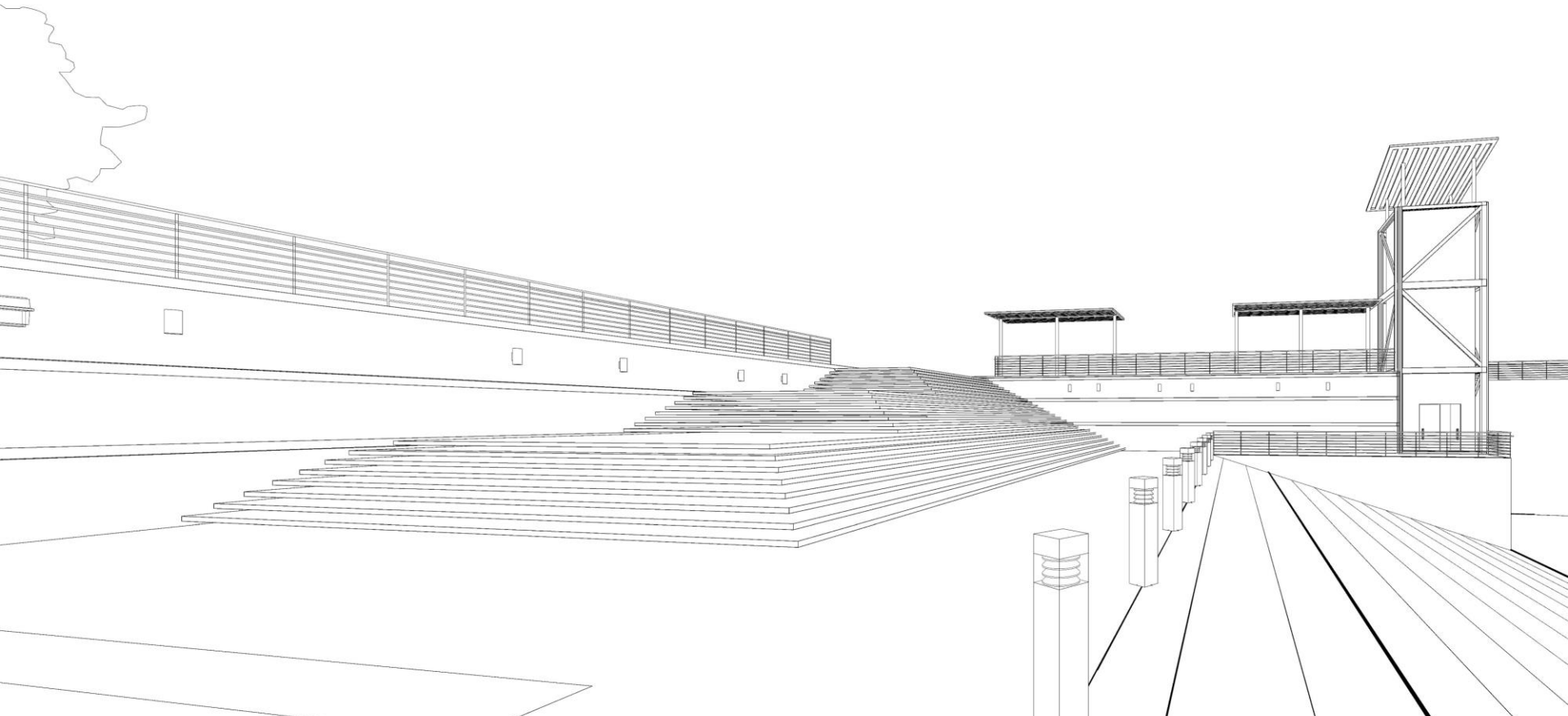
# THESIS NARRATIVE

- The influence of public spaces in urban life have been an issue that has been apparent since the formation of ancient cities.
- These spaces allow opportunities to socialize, interact, and exchange ideas which allow members of a community to contribute to their cities development.
- These opportunities occur more frequently when public space is accessible to everyone.



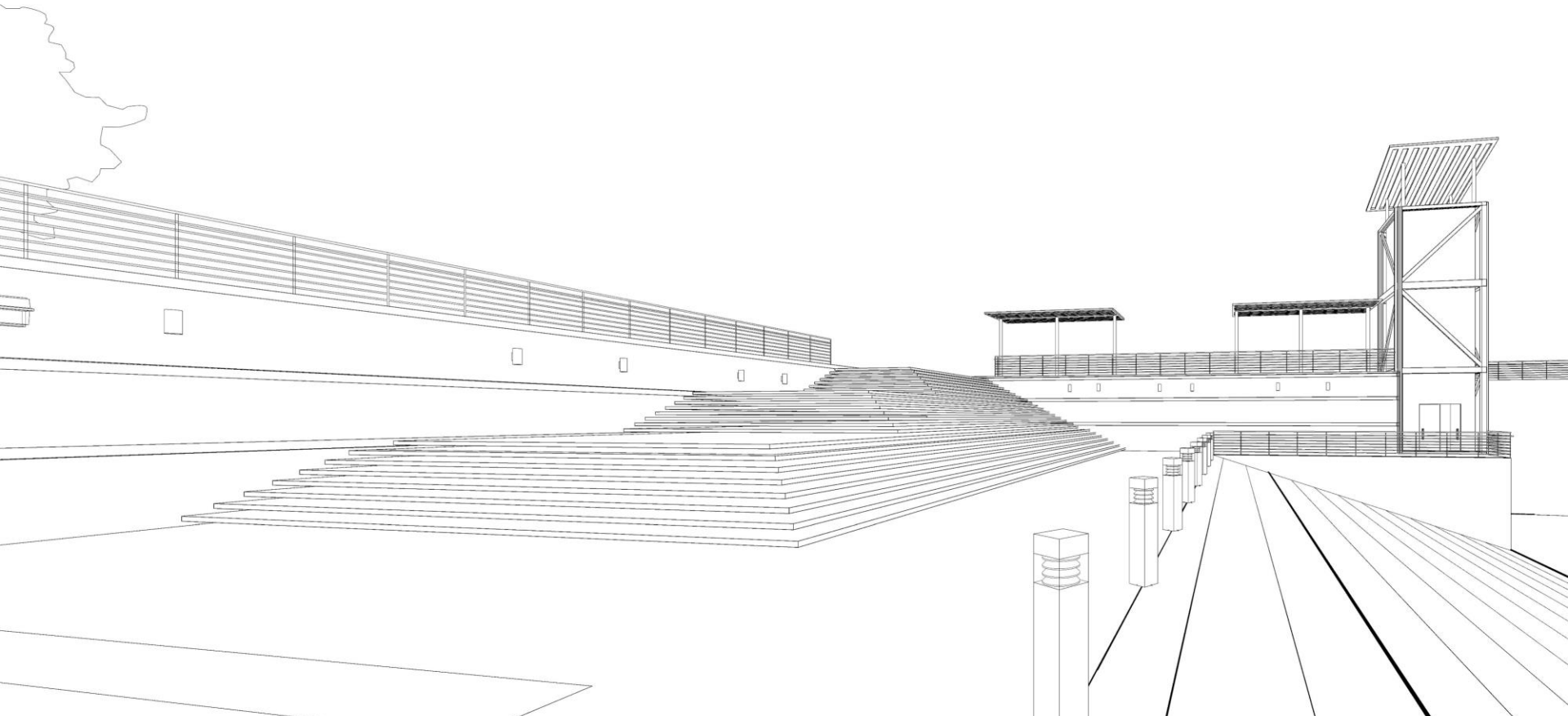
# THESIS NARRATIVE

- The impact of public spaces in American cities has been diminished and limited due to the overabundance of automobiles



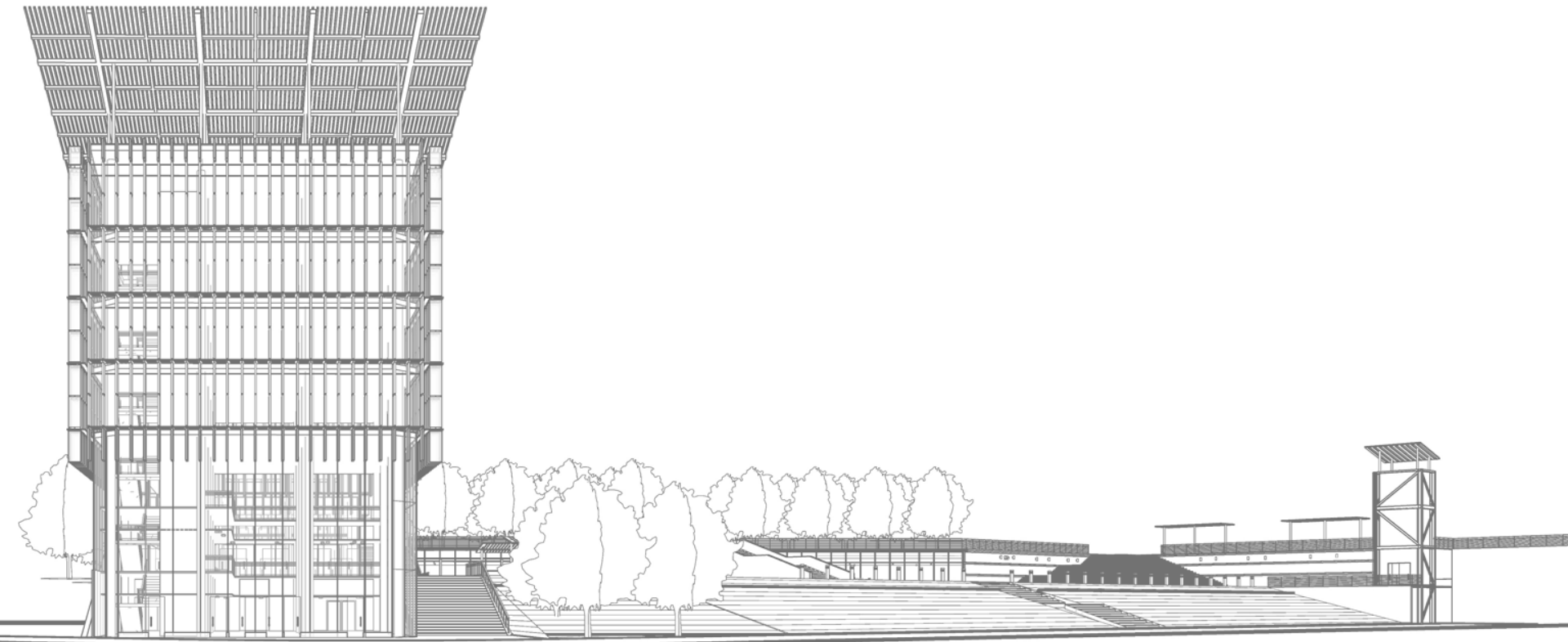
# THESIS NARRATIVE

- The impact of public spaces in American cities has been diminished and limited due to the overabundance of automobiles
- Directed civic life to streets and privately owned areas



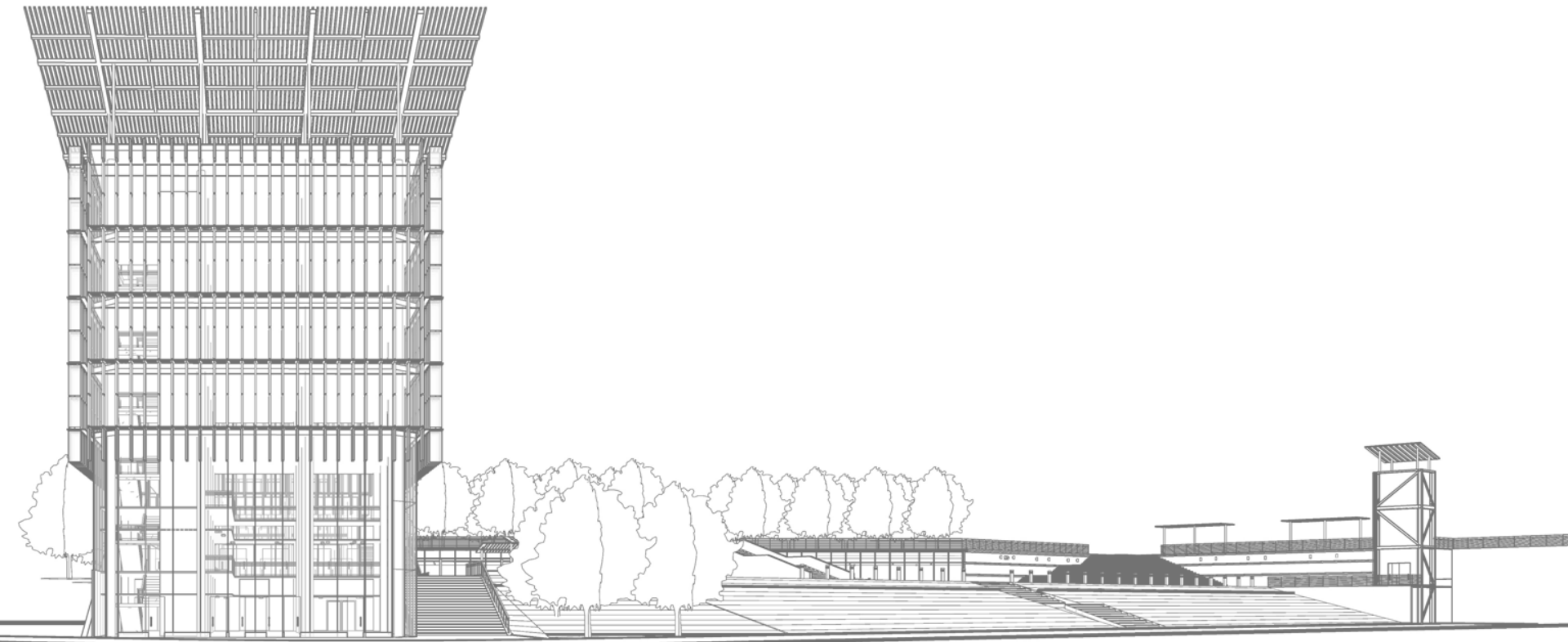
# THESIS NARRATIVE

- By understanding the relationship between civic architecture and public engagement, this thesis aims to provide spaces which incorporate civic pride, civic dignity, and the common ground of a city's citizens in relation to different scales of user interaction.



# THESIS NARRATIVE

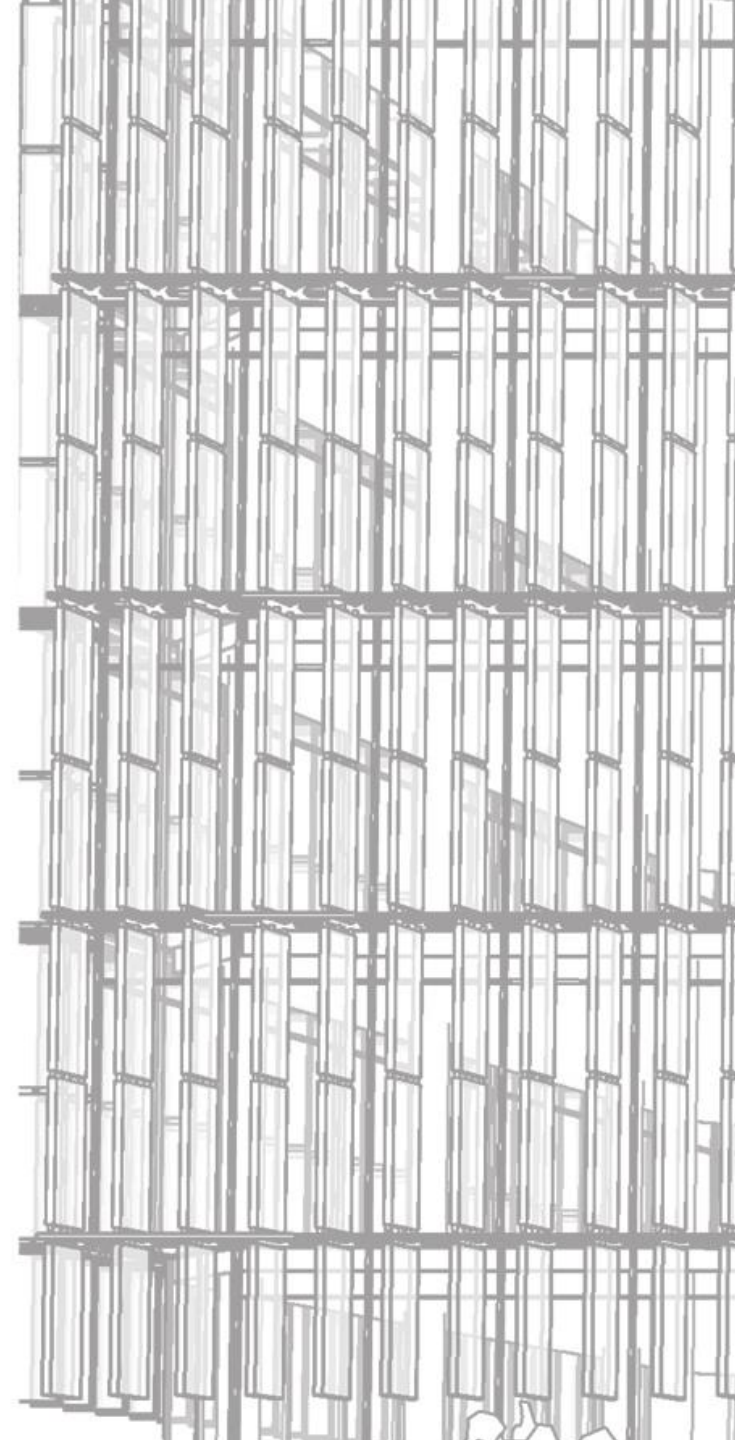
- The goal of the design is to provide spaces which collectively contribute to a sense of community, expression of diversity, and the discovery of a city's common culture.





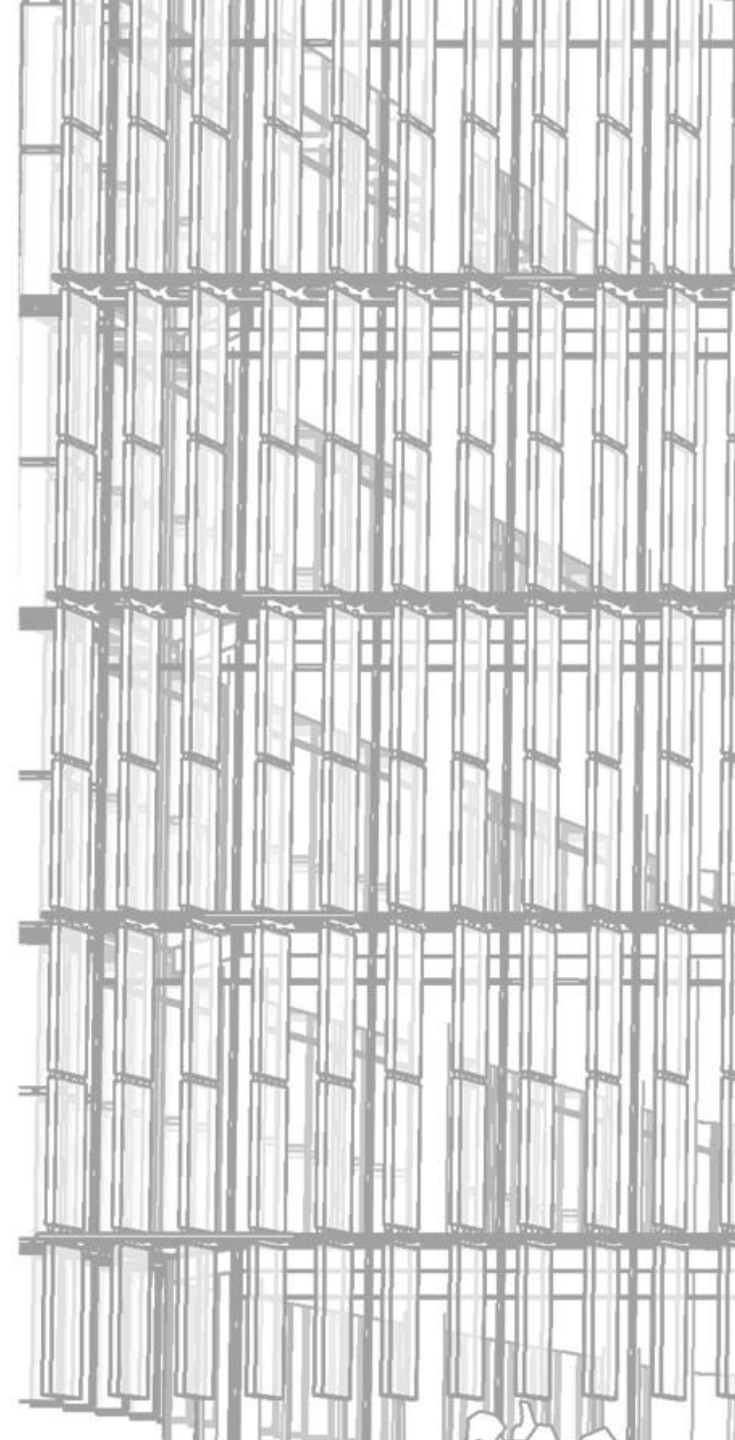
# THE PROBLEM IN CHICAGO...

- Chicago has many areas which are available for public engagement.
- These spaces are becoming more and more privatized.
- Requiring people to adhere to trespass laws.



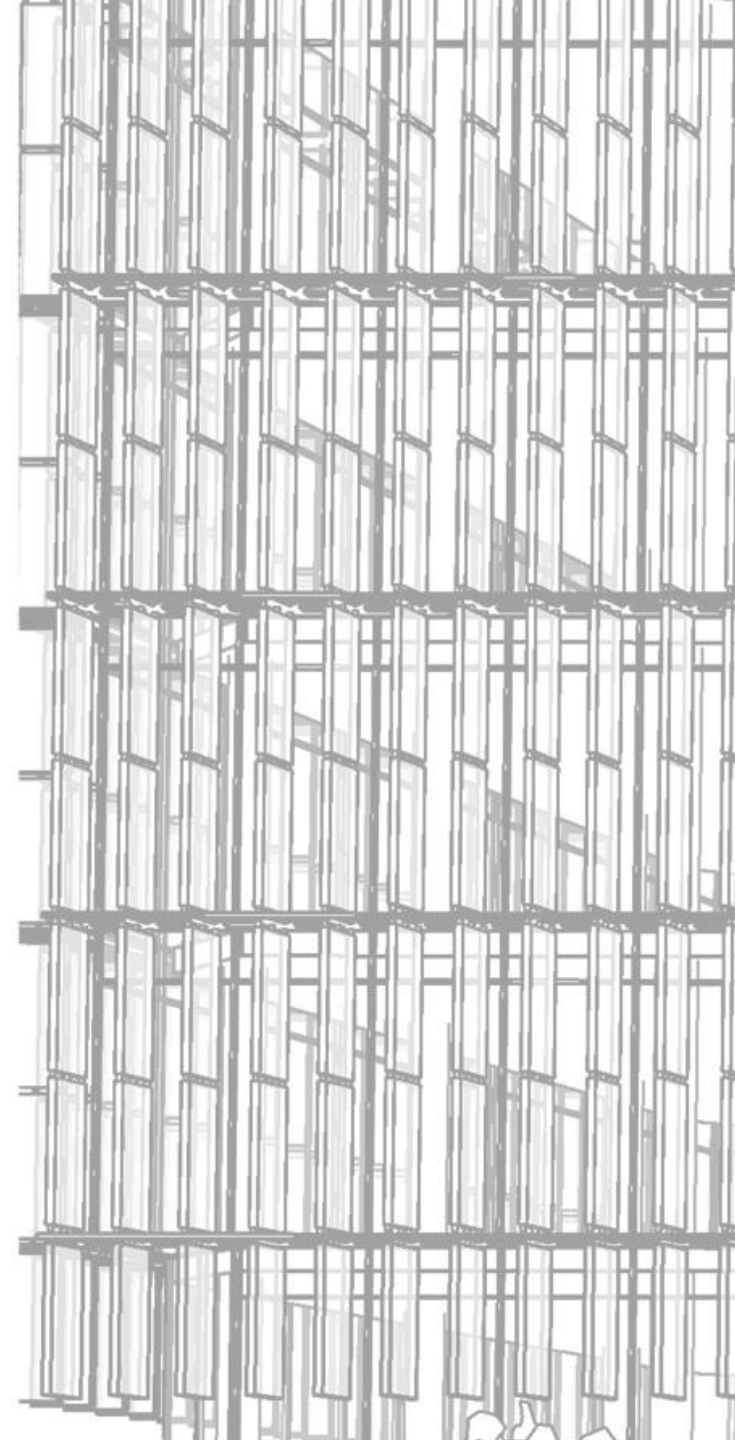
# THE PROBLEM IN CHICAGO...

- Places that are not private:
  - Parks
  - Streets



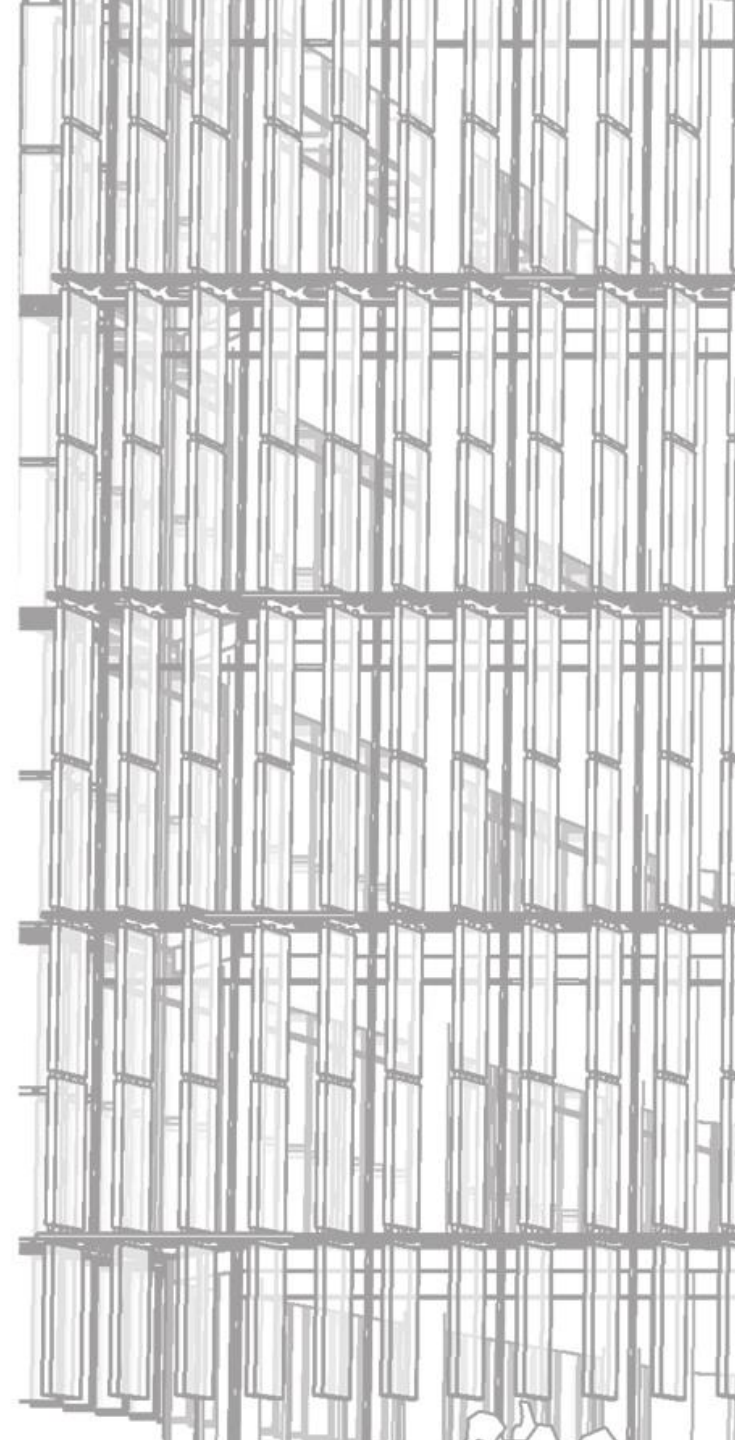
# THE PROBLEM IN CHICAGO...

- Places that are not private:
  - Parks
  - Streets



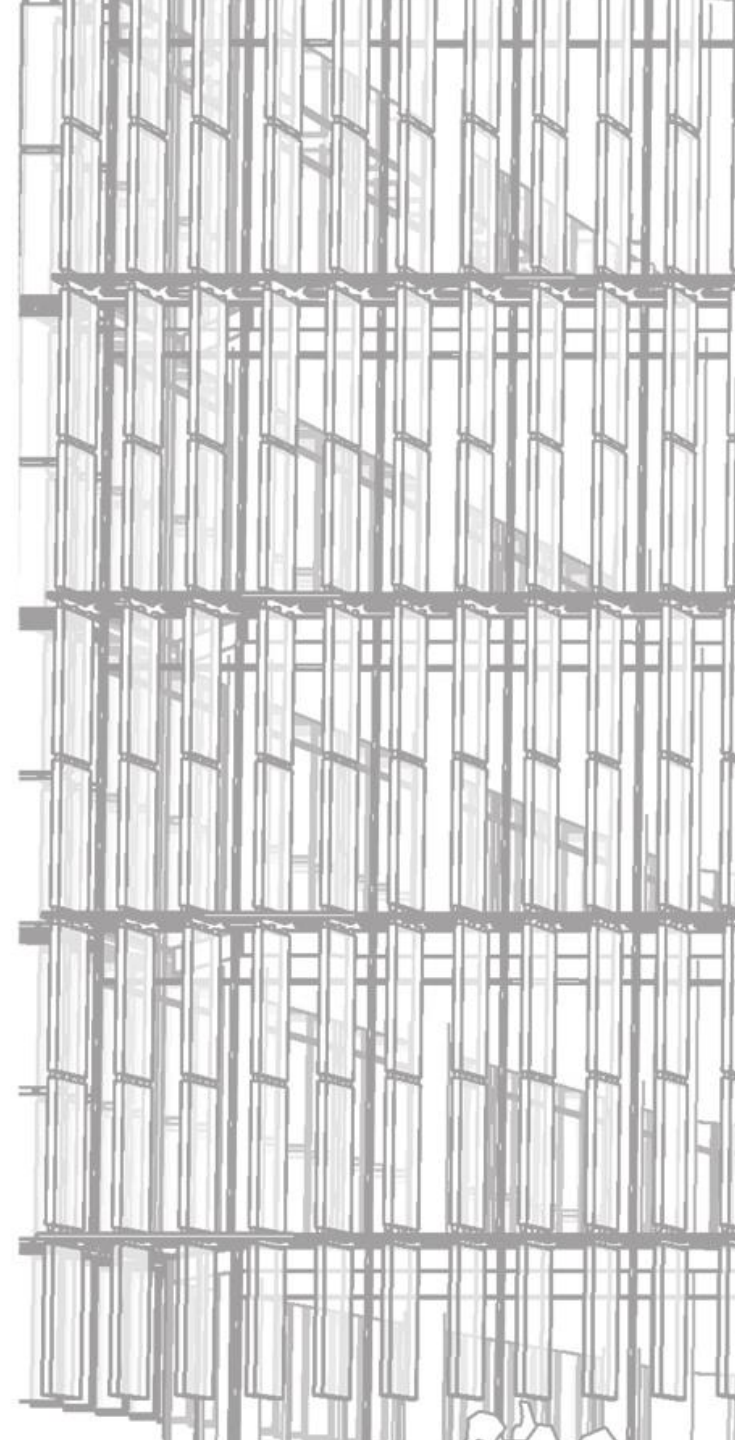
# THE PROBLEM IN CHICAGO...

- Places that are not private:
  - Parks
  - Streets



# THE PROBLEM IN CHICAGO...

- Places that are not private:
  - Daley Plaza
  - Federal Plaza
  - James R. Thompson Center



# DALEY PLAZA

- Located next to city hall
- Large open plaza with next to no greenery
- November and December it is the site for Christkindlmarket
- Bordered by the modern Richard J. Daley Center



# DALEY CENTER

- Very modern
- Lacks personal connection with Chicagoans



# FEDERAL PLAZA

- Another large and open plaza
- Seemingly barren
- Surrounded by multiple modern buildings designed by Mies





# FEDERAL PLAZA

- Modern buildings like Daley Center, but much larger



# JAMES R. THOMPSON CENTER

- Large civic center
- Restricts activities to indoors



# JAMES R. THOMPSON CENTER

- Any sort of displays are not seen from the common passers-by in the civic realm.



# THE PROBLEM WITH CHICAGO...

- Great that people have spaces where they are free to express themselves.
- No variety in scale of these spaces.
- Citizens often feel they are not reflected in the architecture.

# SIZE OF CIVIC SPACES IN CHICAGO

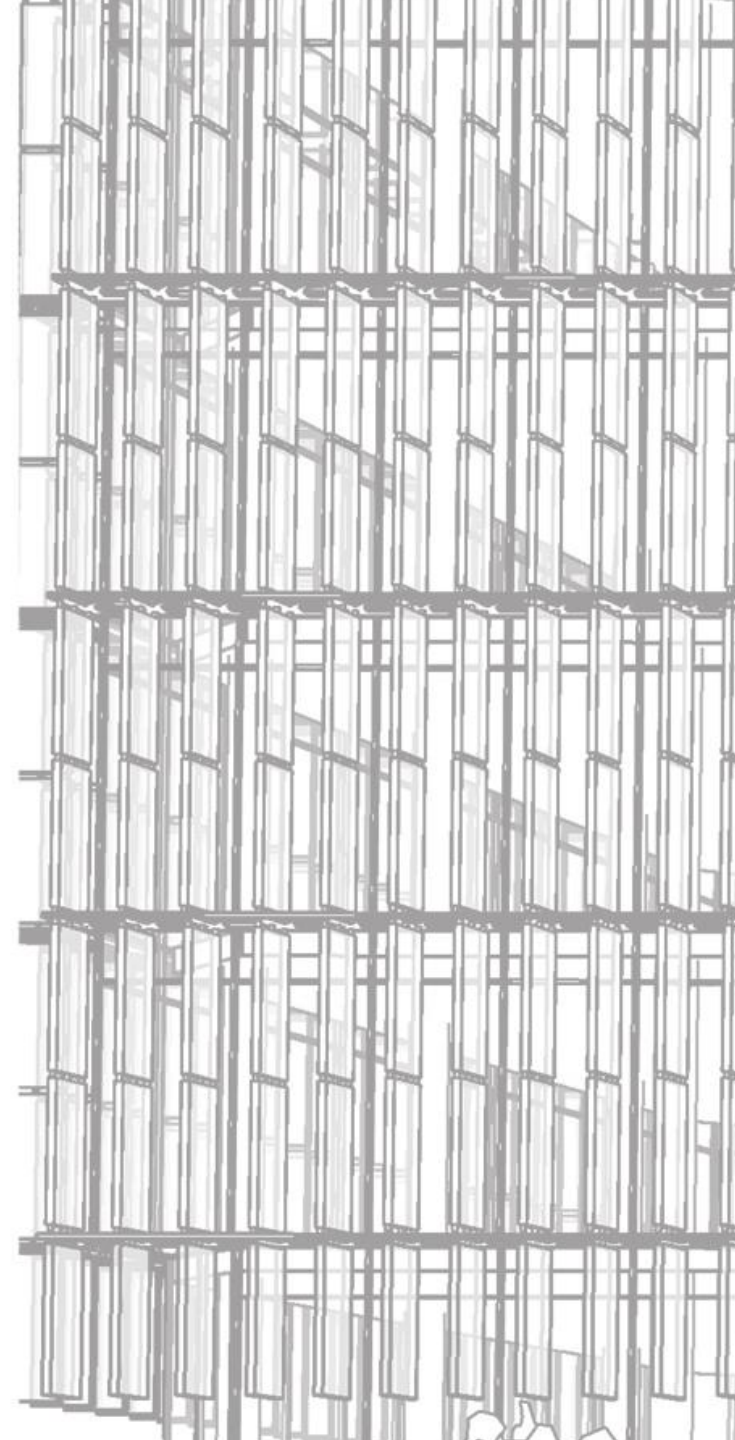
- When disregarding streetscapes and parks, Chicago currently offers 91,415 square feet to its citizens.

# SIZE OF CIVIC SPACES IN CHICAGO

- Chicago currently serves 9.5 million residents

# FINDING A SOLUTION

- Understand successful civic architecture successful public spaces.
- Study how to create engagement with the public through architecture.



# FINDING A SOLUTION

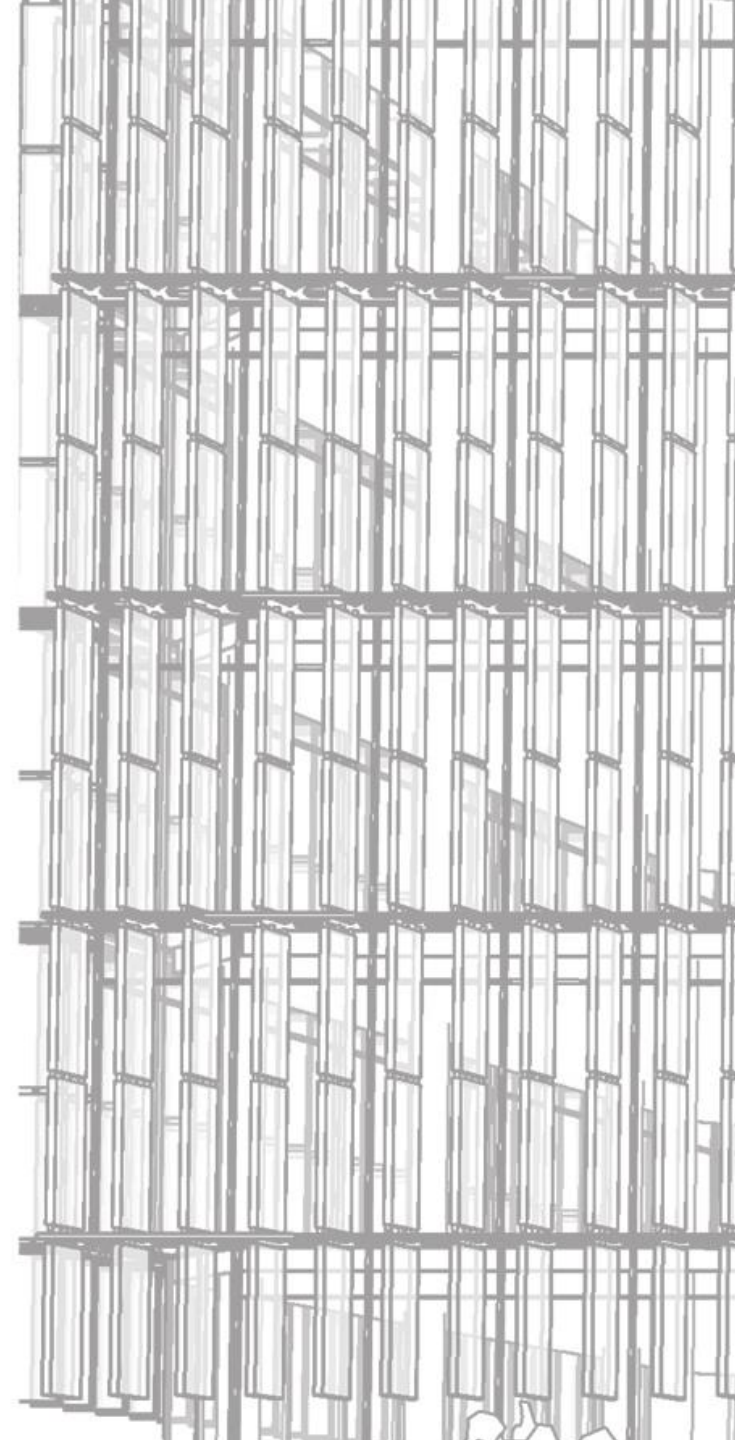
How can civic architecture influence and facilitate public engagement within an urban environment?

The research for this thesis had the goal of using an emancipatory system of inquiry to understand the multiple realities that overlap through historical, social, cultural, and empowerment identity. This research was used to allow the architecture to apply to those multiple realities.

Research strategies included producing logical arguments, through iterations, and interpretive and qualitative research.

Research techniques used were logical iterations in site selection as well as a large dependency on literary reviews.

The following strategies, techniques, and goals resulted in a research based design to facilitate engagement through public space and civic architecture.





# PUBLIC ENGAGEMENT

## CIVIC ARCHITECTURE

		PUBLIC ENGAGEMENT			
CIVIC ARCHITECTURE					

# TARGET FIELD STATION



# CENTRE GEORGES POMPIDOU

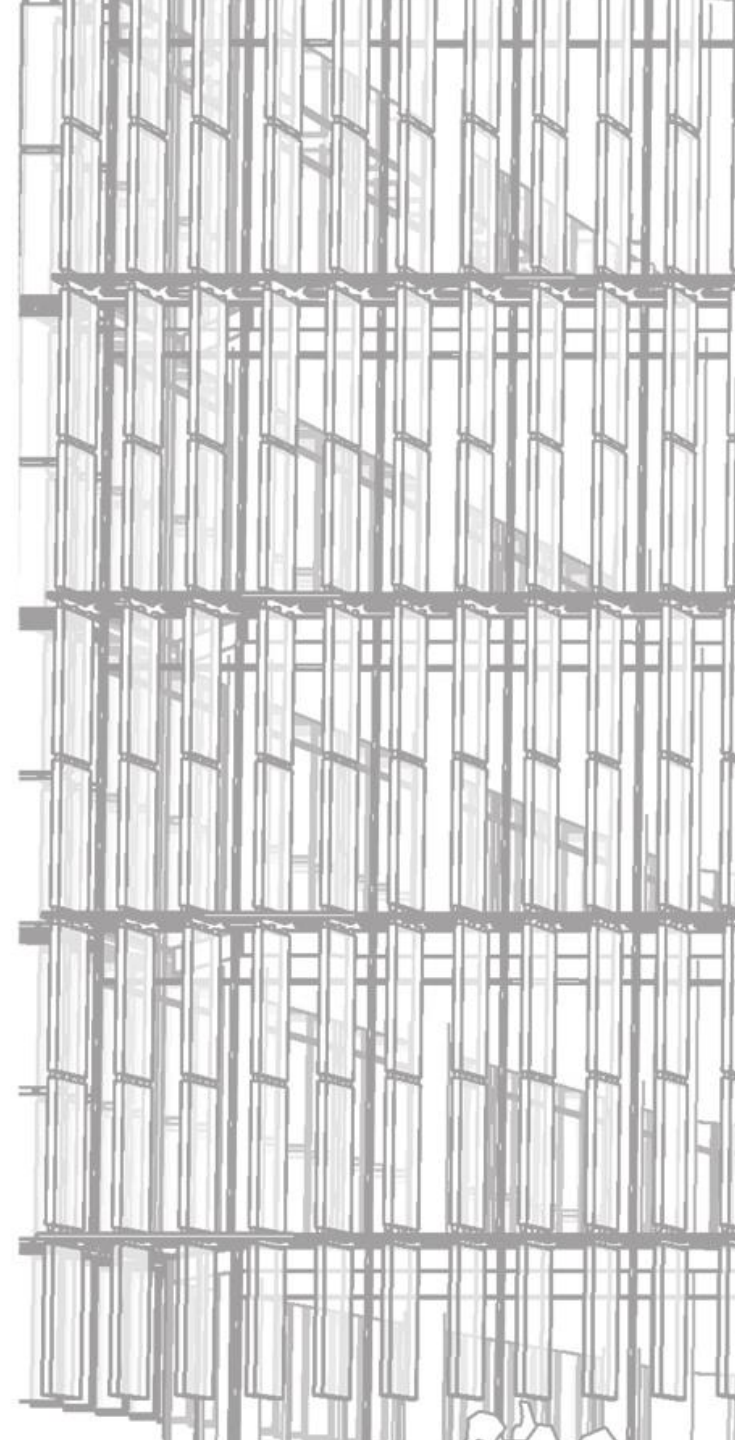


# THE ROMAN FORUM



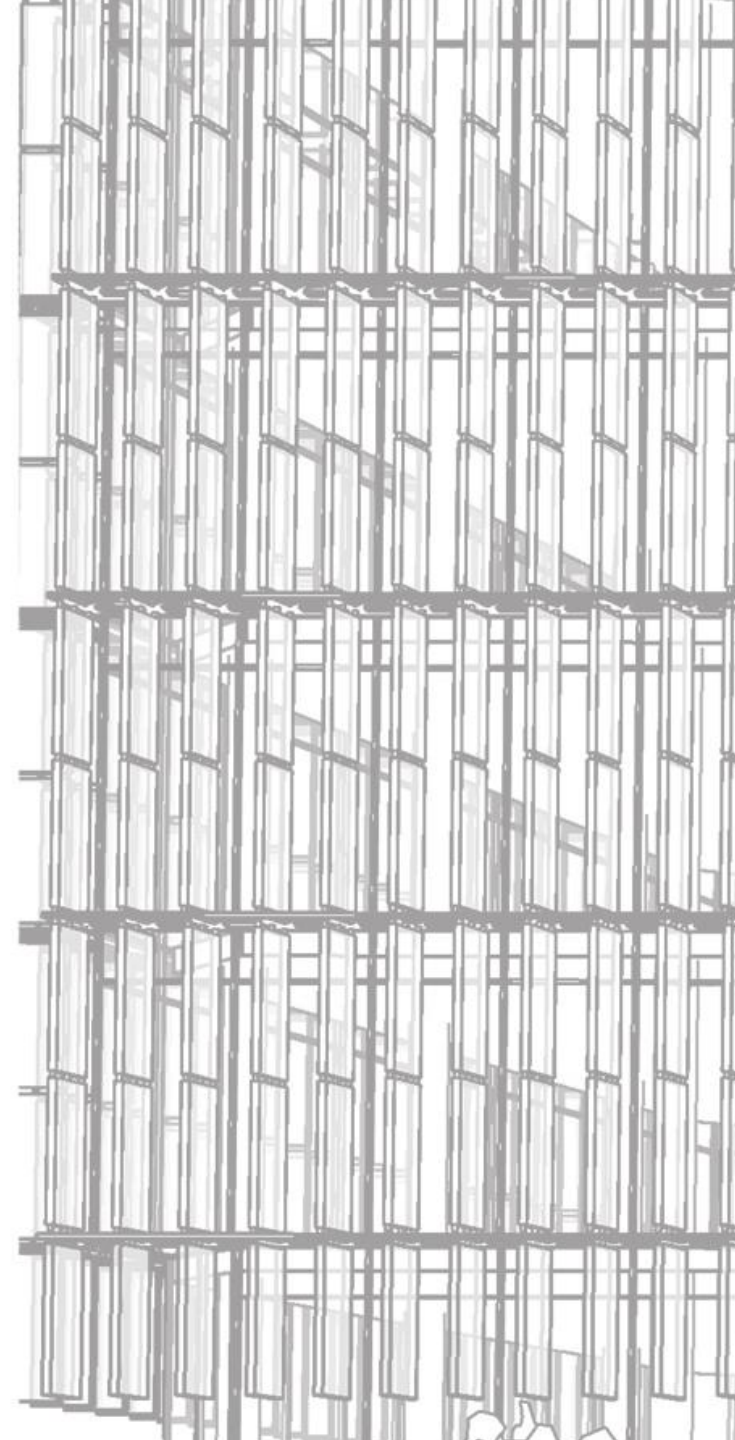
# COMMON GROUND

- The similarities between people in community regardless of background.



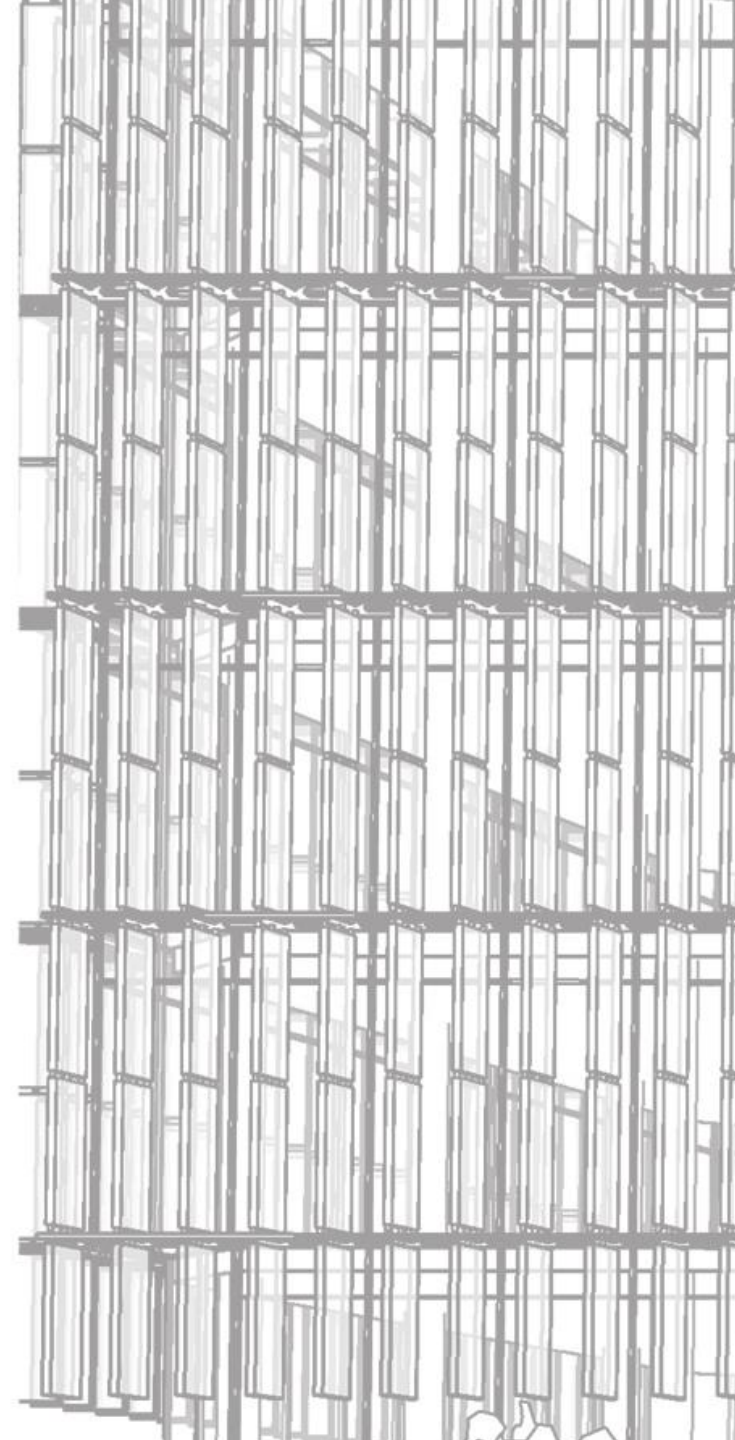
# CIVIC PRIDE

- Pride in one's community or city



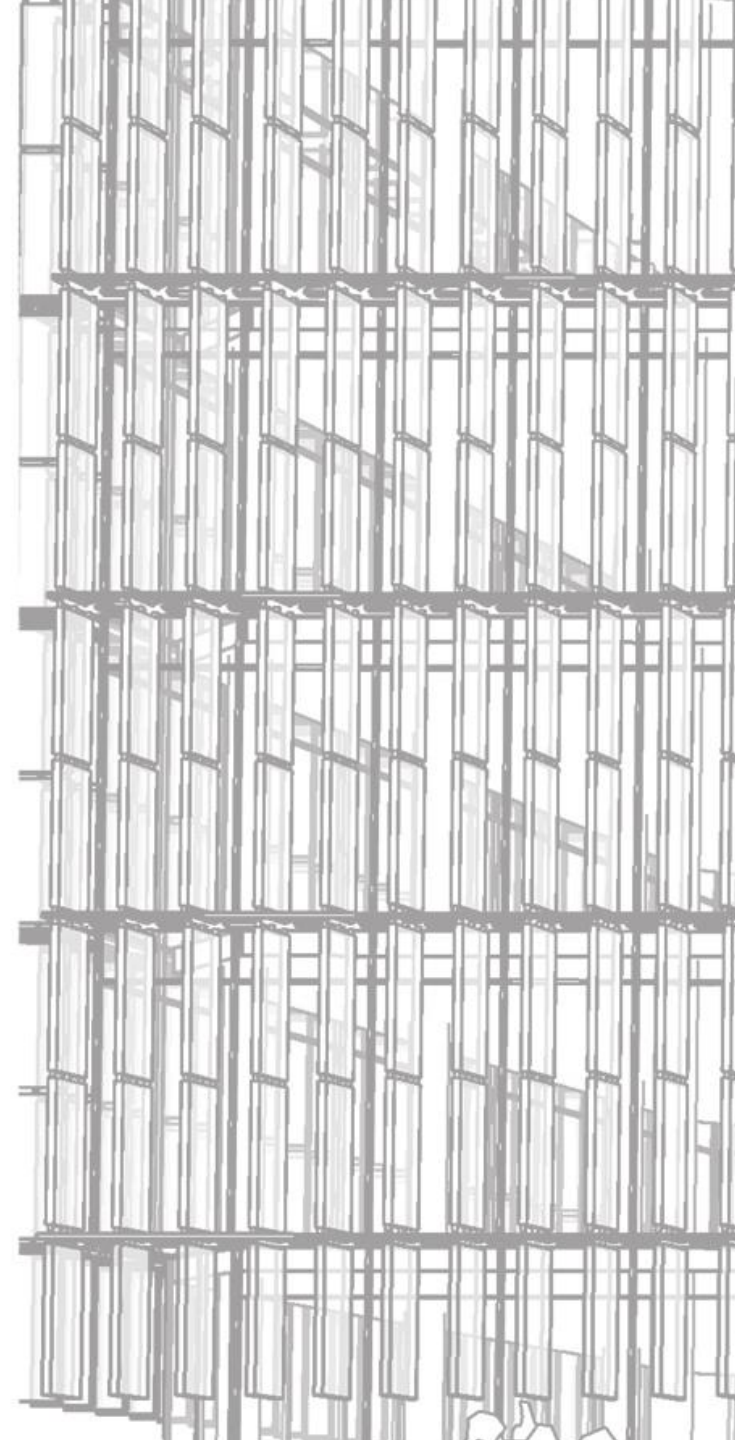
# CIVIC DIGNITY

- Self appreciation, representation, and worthiness.



# CIVIC DIGNITY

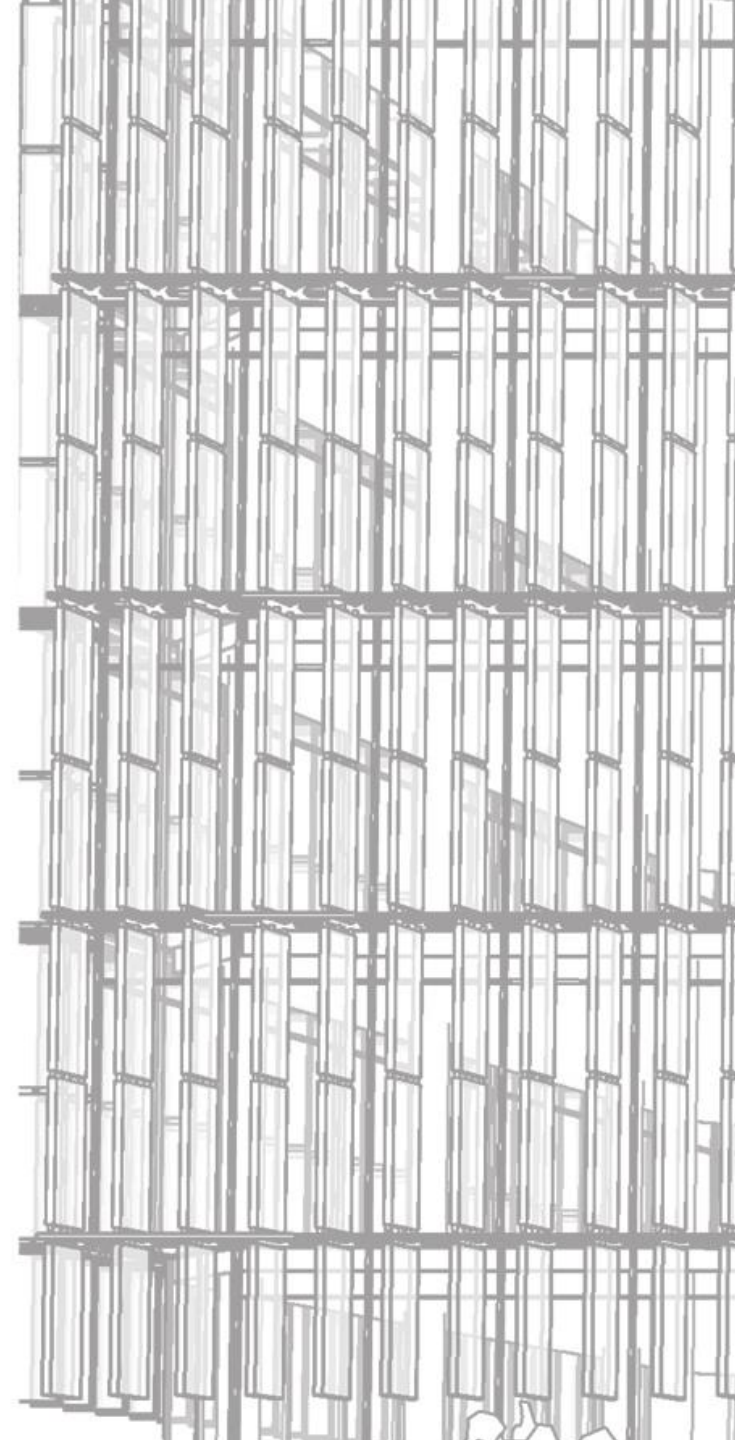
- Self appreciation, representation, and worthiness.
- Our civic dignity is lost when our voice and opinions go unacknowledged.





# AESTHETICS

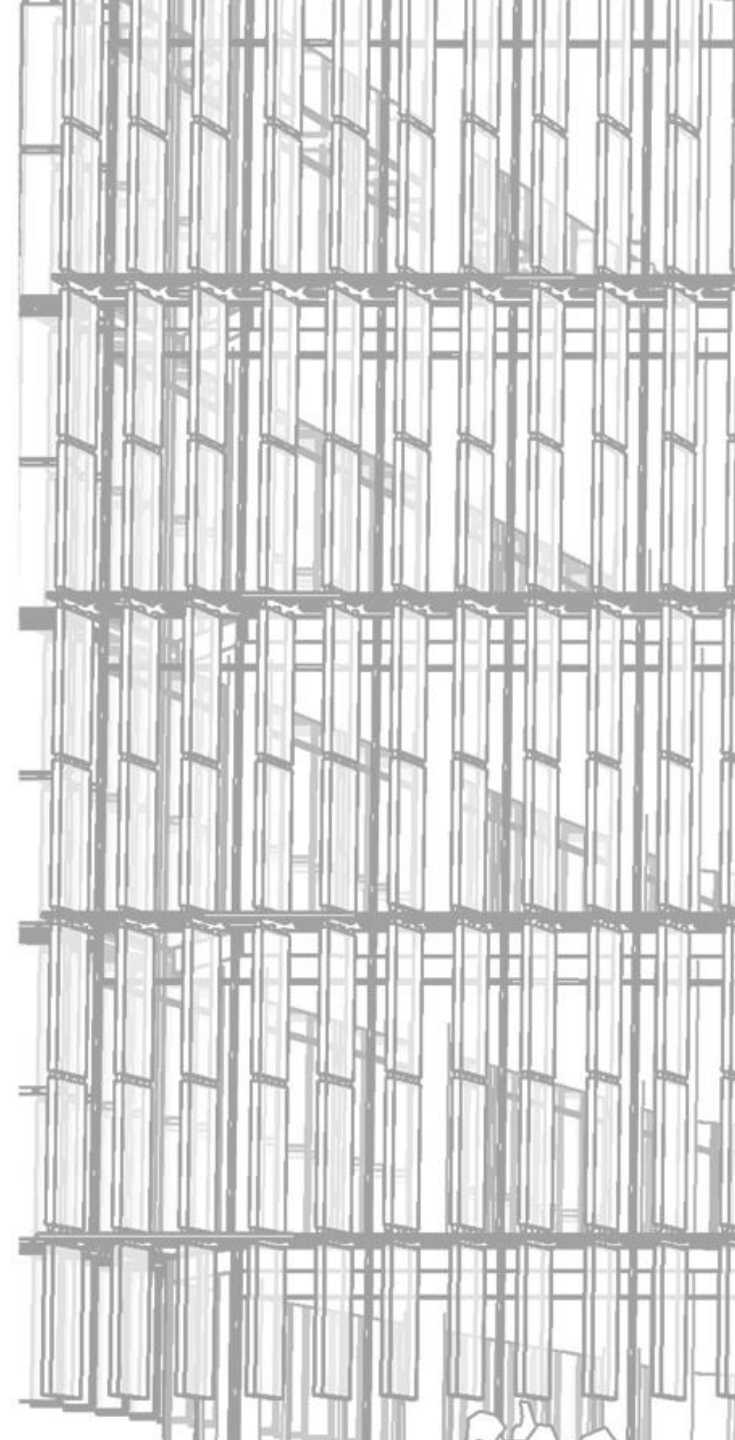
- Aesthetics that appeal to multiple realities, not just one group.



# AESTHETICS

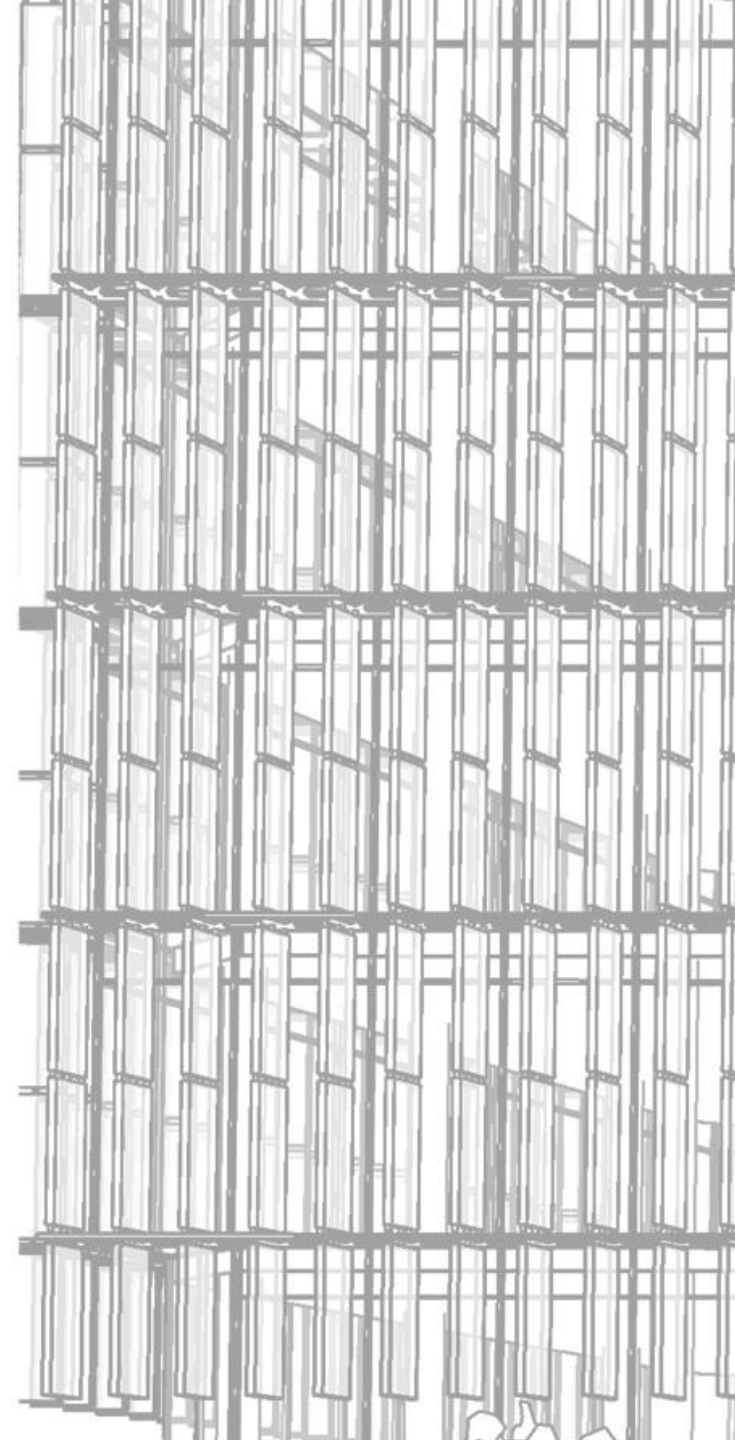
- Aesthetics that appeal to multiple realities, not just one group.

i.e. neoclassicism



# AESTHETICS

- A study of city hall in Philadelphia showed that most minority groups felt no connection to the area for multiple reasons.



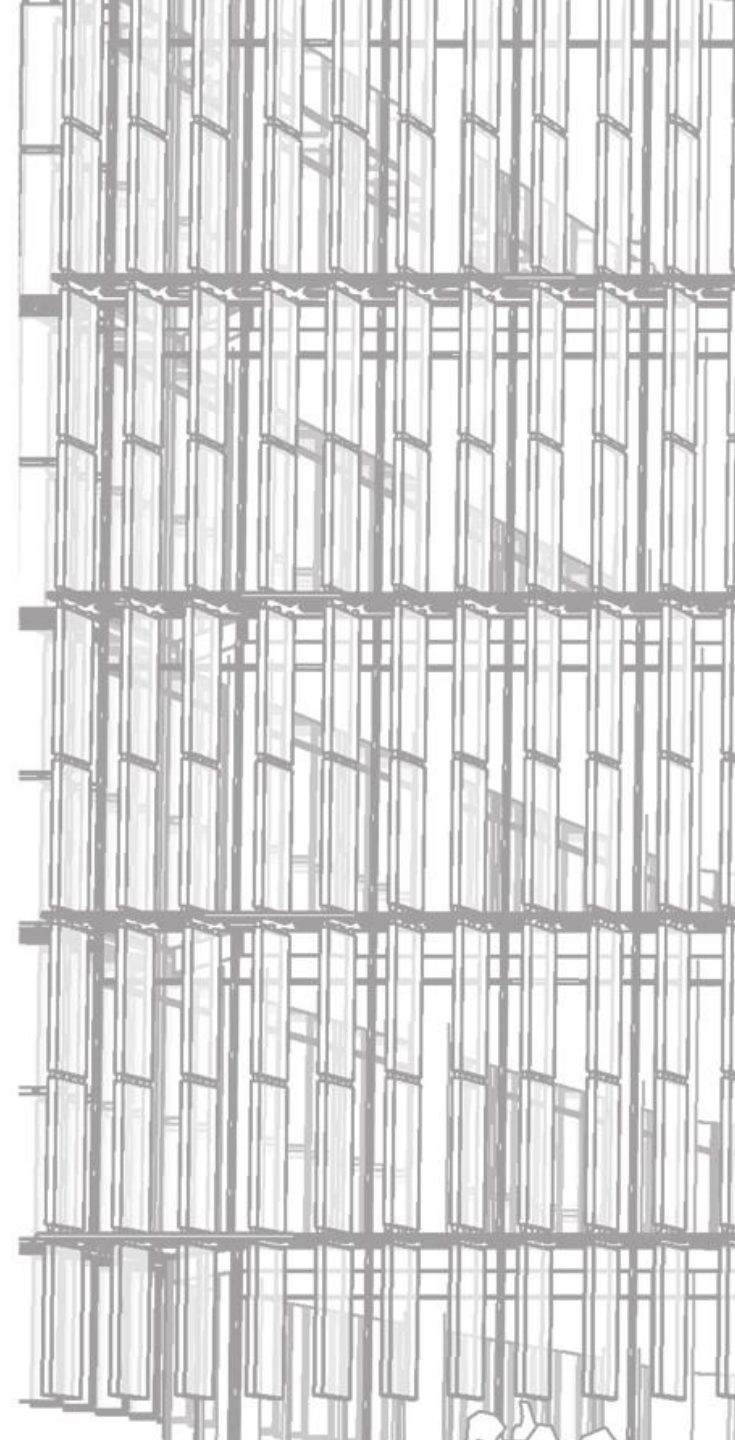
AESTHETICS

African Americans

Asian Americans

Jewish Americans

Italian Americans



# AESTHETICS

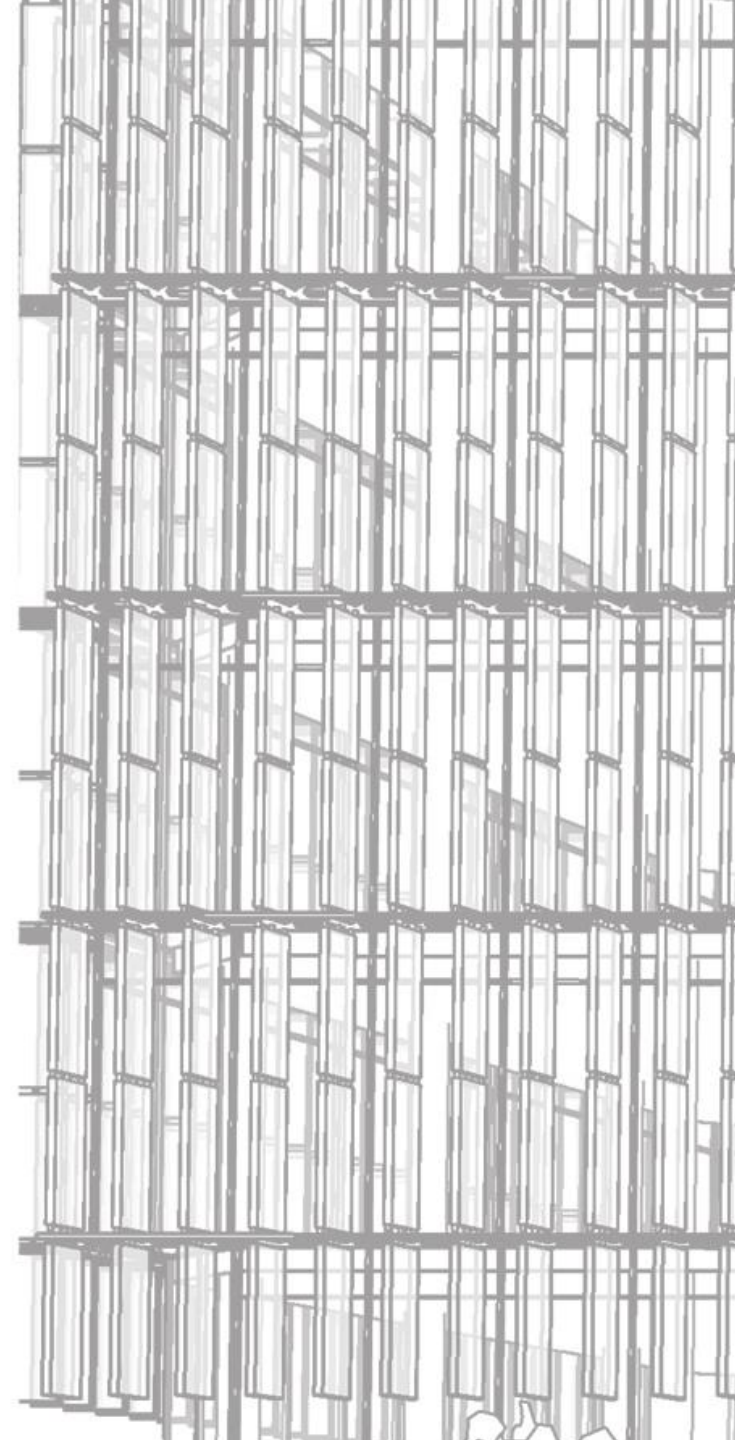
## African Americans

*Felt their history wasn't represented in the attraction so they didn't visit often.*

## Asian Americans

## Jewish Americans

## Italian Americans



# AESTHETICS

## African Americans

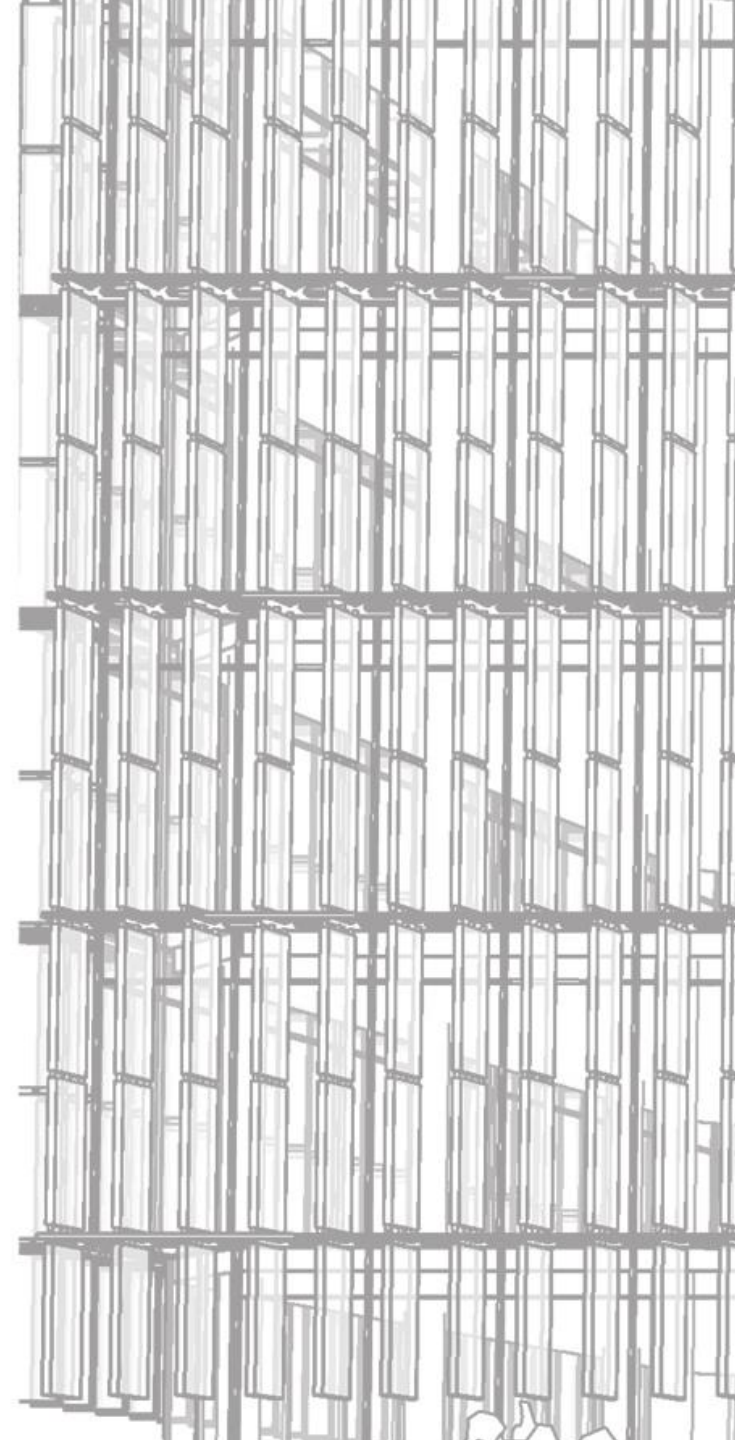
*Felt their history wasn't represented in the attraction so they didn't visit often.*

## Asian Americans

*Had similar thoughts as African Americans*

## Jewish Americans

## Italian Americans



# AESTHETICS

## African Americans

*Felt their history wasn't represented in the attraction so they didn't visit often.*

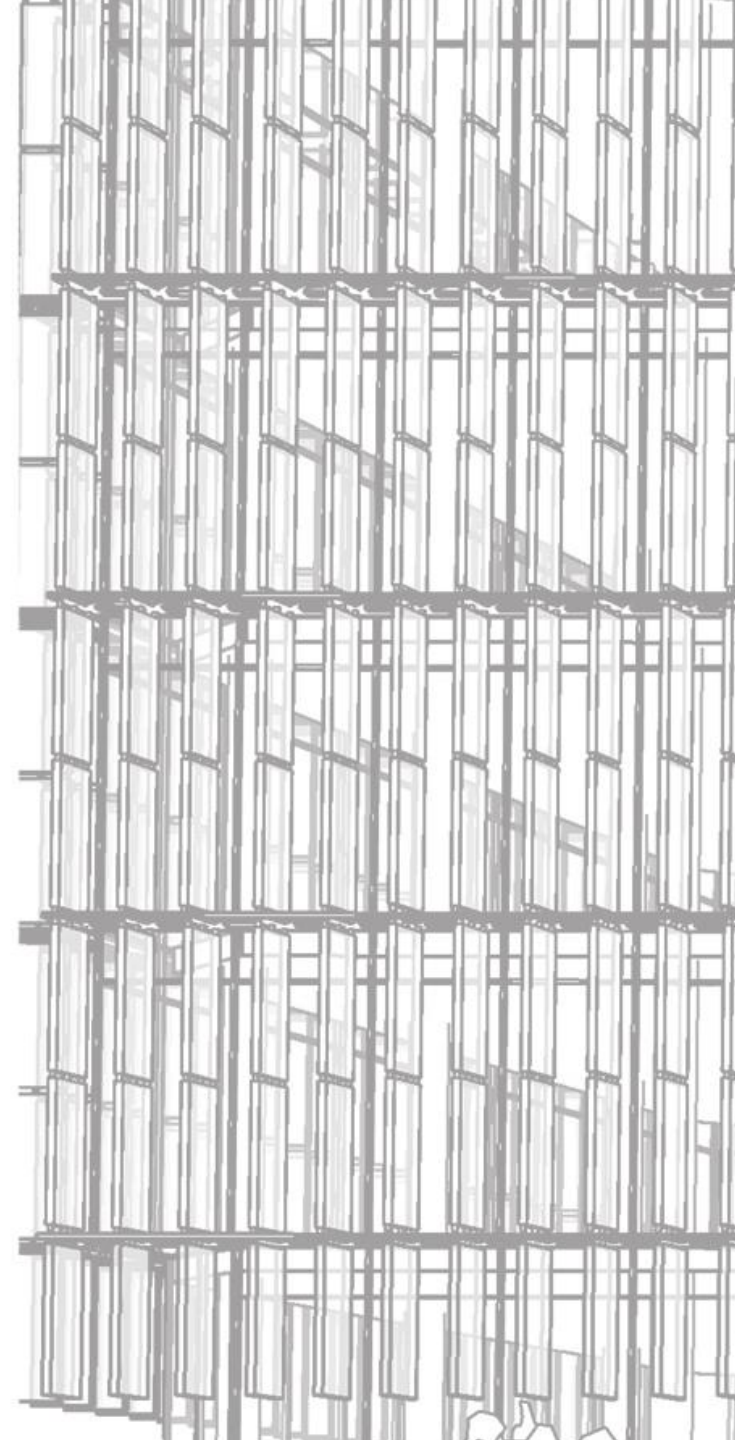
## Asian Americans

*Had similar thoughts as African Americans*

## Jewish Americans

*Thought it was a nice building, but never visit the site because it does not represent Jewish values*

## Italian Americans



# AESTHETICS

## African Americans

*Felt their history wasn't represented in the attraction so they didn't visit often.*

## Asian Americans

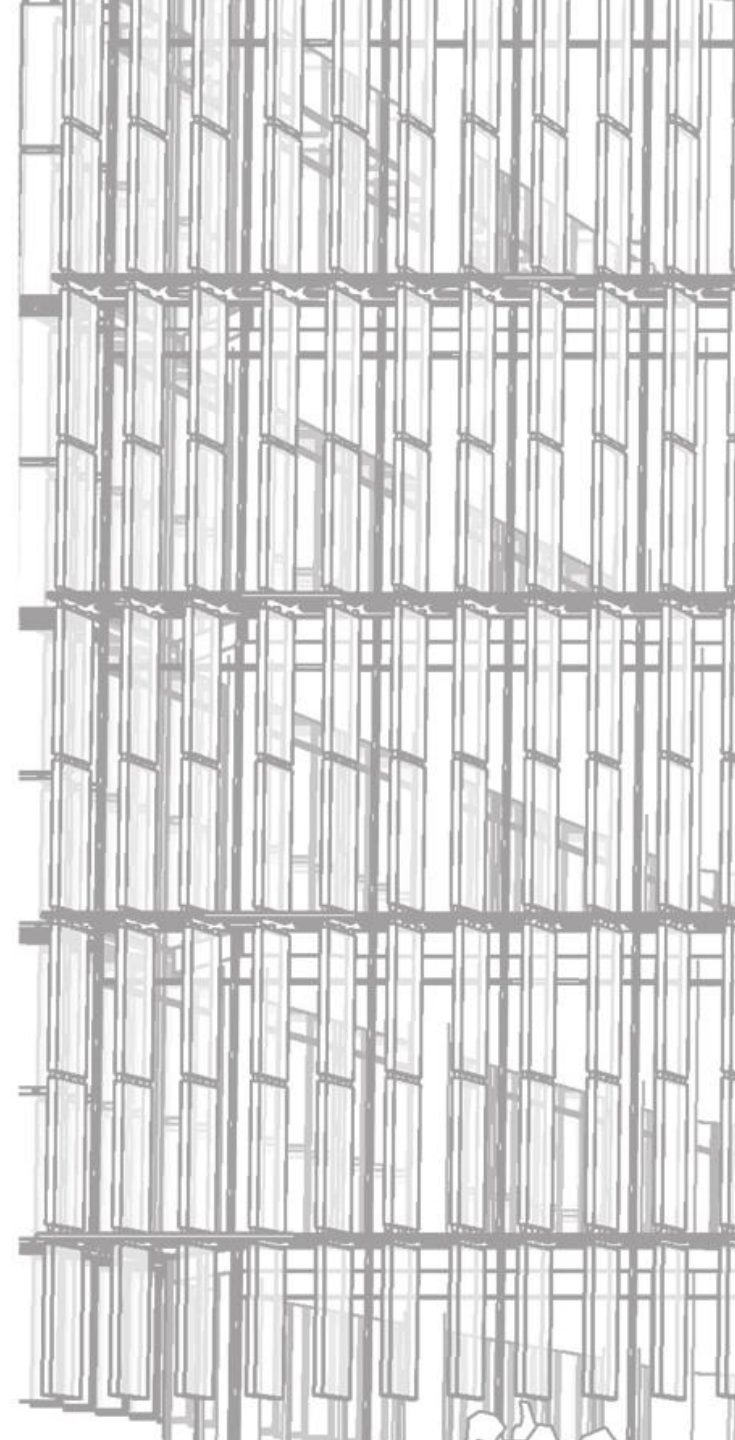
*Had similar thoughts as African Americans*

## Jewish Americans

*Thought it was a nice building, but never visit the site because it does not represent Jewish values*

## Italian Americans

*"Kind of a neat place, but needs more to attract me."*





# AESTHETICS

## African Americans

*Felt their history wasn't represented in the attraction so they didn't visit often.*

## Asian Americans

*Had similar thoughts as African Americans*

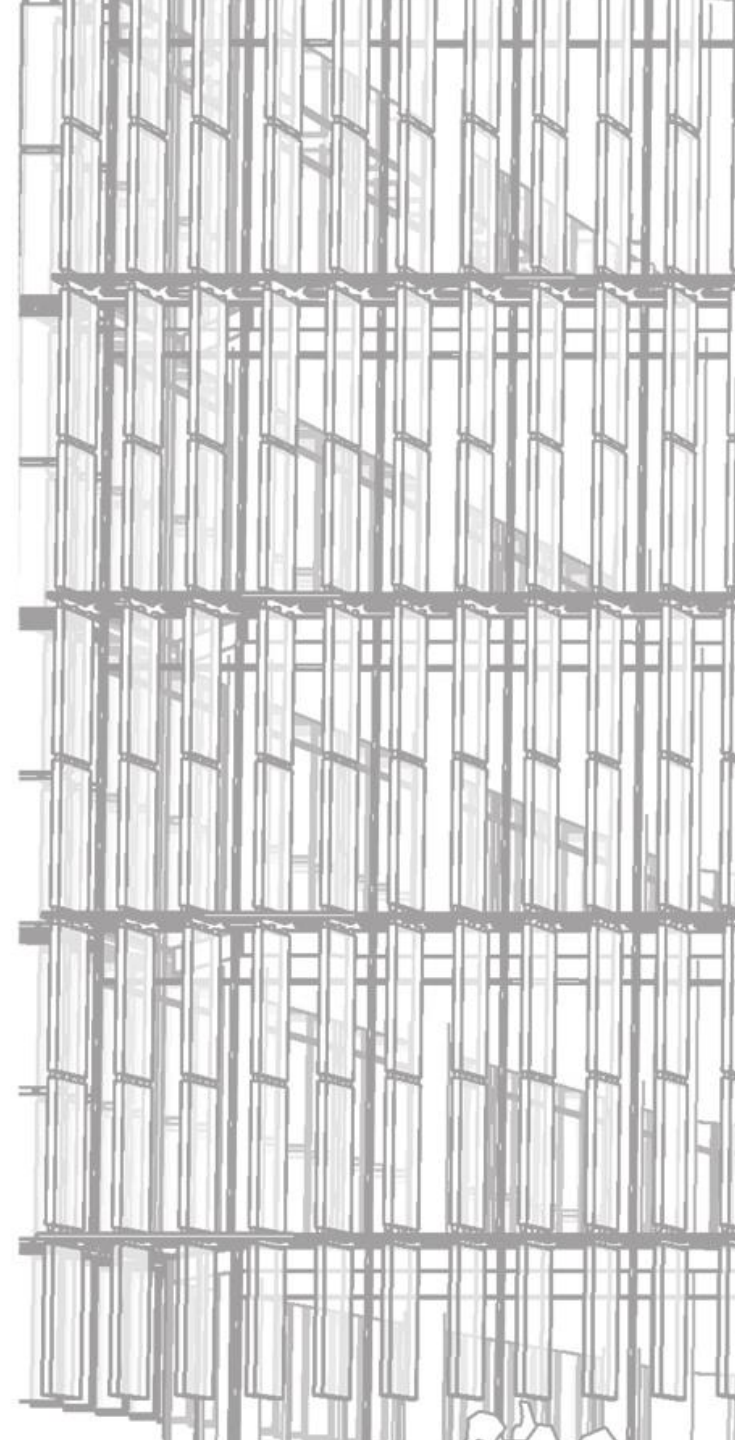
## Jewish Americans

*Thought it was a nice building, but never visit the site because it does not represent Jewish values*

## Italian Americans

*"Kind of a neat place, but needs more to attract me."*

*"Needs more hoagies."*



# CIVIC ARCHITECTURE

AESTHETICS

CIVIC  
DIGNITY

CIVIC  
PRIDE

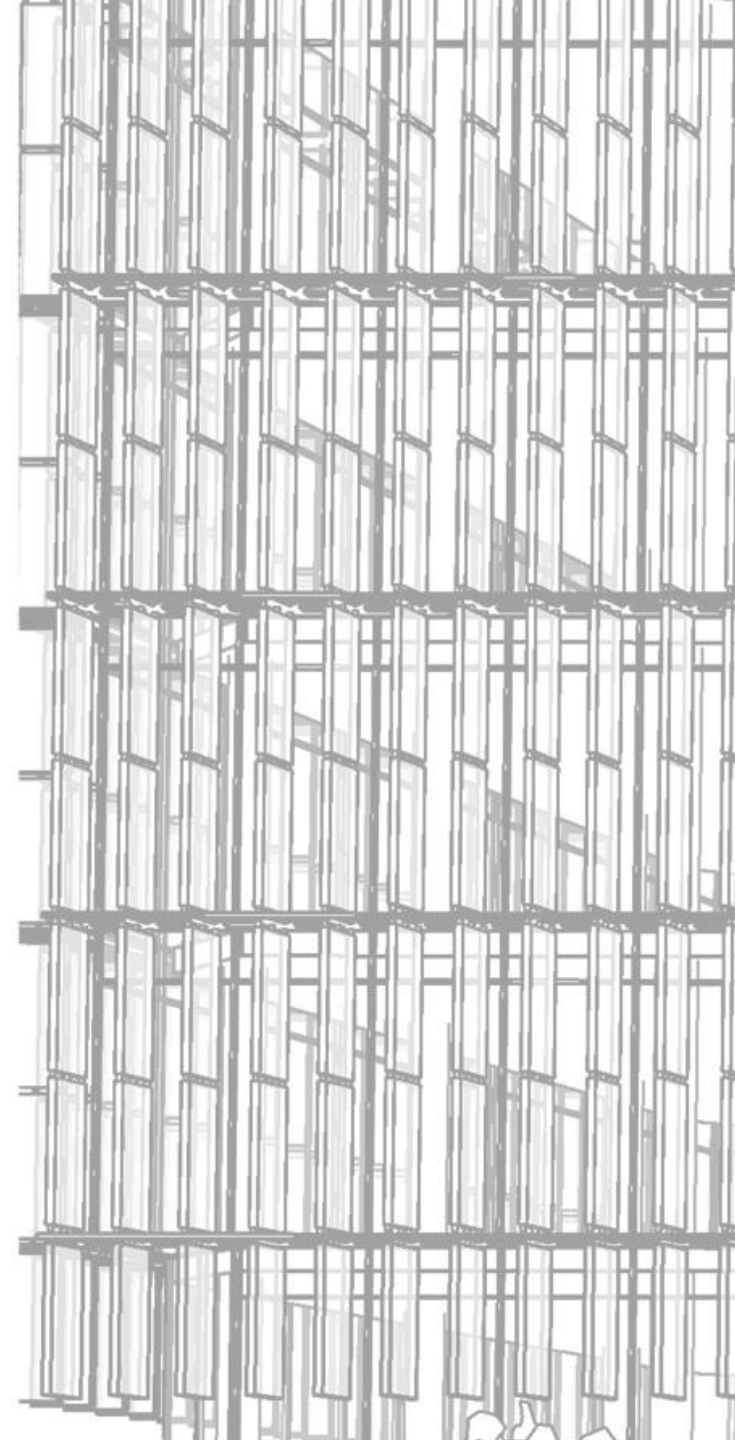
COMMON  
GROUND

# PUBLIC ENGAGEMENT

CIVIC ARCHITECTURE				PUBLIC ENGAGEMENT			
AESTHETICS	CIVIC DIGNITY	CIVIC PRIDE	COMMON GROUND				

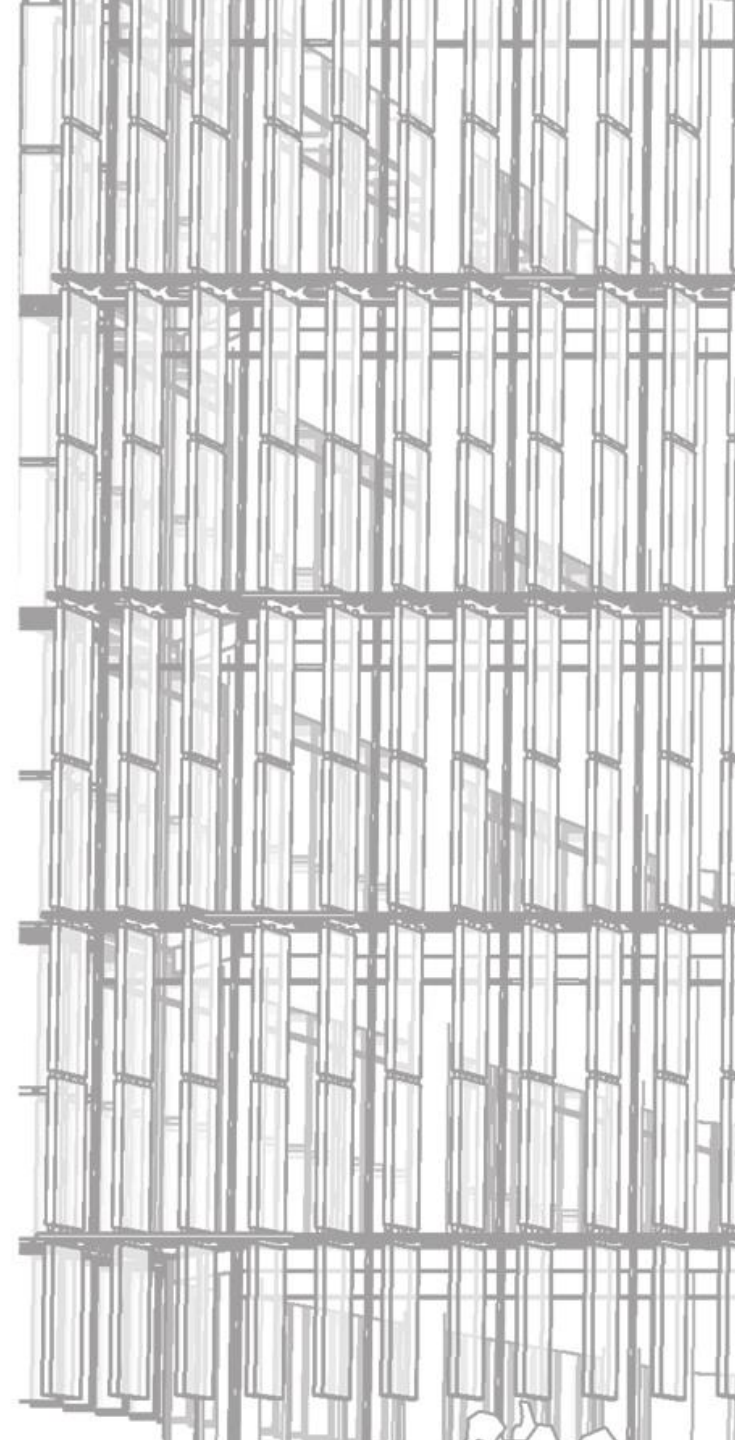
# SOLVING THE PROBLEM

- Looking into public engagement it was important to research the three terms most commonly associated with it.



# SOLVING THE PROBLEM

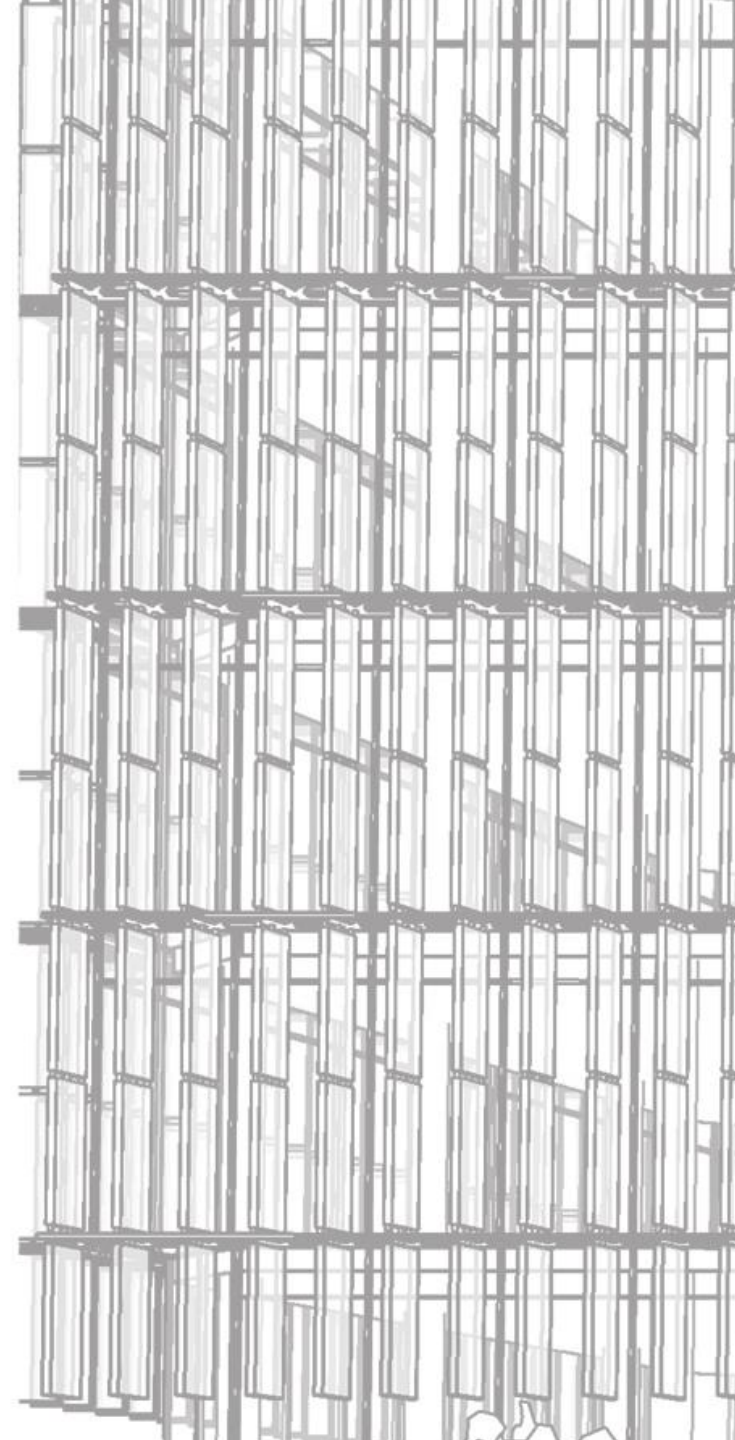
- Looking into public engagement it was important to research the three terms most commonly associated with it:
- Transmission
- Reception
- Collaboration



		PUBLIC ENGAGEMENT			
		PERSONAL SCALE	SMALL SCALE	LARGE SCALE	INFO/ PEDAGOGY
CIVIC ARCHITECTURE	COMMON GROUND				
	CIVIC PRIDE				
	CIVIC DIGNITY				
	AESTHETICS				

# SOLVING THE PROBLEM

- Using literary resources to find the links between civic architecture and public engagement.



		PUBLIC ENGAGEMENT			
		PERSONAL SCALE	SMALL SCALE	LARGE SCALE	INFO/ PEDAGOGY
CIVIC ARCHITECTURE	COMMON GROUND				
	CIVIC PRIDE				
	CIVIC DIGNITY				
	AESTHETICS				

		PUBLIC ENGAGEMENT			
		PERSONAL SCALE	SMALL SCALE	LARGE SCALE	INFO/ PEDAGOGY
CIVIC ARCHITECTURE	COMMON GROUND	OBSERVATION			
	CIVIC PRIDE				
	CIVIC DIGNITY				
	AESTHETICS				



		PUBLIC ENGAGEMENT			
		PERSONAL SCALE	SMALL SCALE	LARGE SCALE	INFO/ PEDAGOGY
CIVIC ARCHITECTURE	COMMON GROUND	OBSERVATION	TRIANGULATION		
	CIVIC PRIDE				
	CIVIC DIGNITY				
	AESTHETICS				

		PUBLIC ENGAGEMENT			
		PERSONAL SCALE	SMALL SCALE	LARGE SCALE	INFO/ PEDAGOGY
CIVIC ARCHITECTURE	COMMON GROUND	OBSERVATION	TRIANGULATION	DIVERSITY	
	CIVIC PRIDE				
	CIVIC DIGNITY				
	AESTHETICS				

		PUBLIC ENGAGEMENT			
		PERSONAL SCALE	SMALL SCALE	LARGE SCALE	INFO/ PEDAGOGY
CIVIC ARCHITECTURE	COMMON GROUND	OBSERVATION	TRIANGULATION	DIVERSITY	RELATION TO BUILDING
	CIVIC PRIDE				
	CIVIC DIGNITY				
	AESTHETICS				

		PUBLIC ENGAGEMENT			
		PERSONAL SCALE	SMALL SCALE	LARGE SCALE	INFO/ PEDAGOGY
CIVIC ARCHITECTURE	COMMON GROUND	OBSERVATION	TRIANGULATION	DIVERSITY	RELATION TO BUILDING
	CIVIC PRIDE	SENSE OF COMMUNITY			
	CIVIC DIGNITY				
	AESTHETICS				

		PUBLIC ENGAGEMENT			
		PERSONAL SCALE	SMALL SCALE	LARGE SCALE	INFO/ PEDAGOGY
CIVIC ARCHITECTURE	COMMON GROUND	OBSERVATION	TRIANGULATION	DIVERSITY	RELATION TO BUILDING
	CIVIC PRIDE	SENSE OF COMMUNITY	SENSE OF COMMUNITY		
	CIVIC DIGNITY				
	AESTHETICS				

		PUBLIC ENGAGEMENT			
		PERSONAL SCALE	SMALL SCALE	LARGE SCALE	INFO/ PEDAGOGY
CIVIC ARCHITECTURE	COMMON GROUND	OBSERVATION	TRIANGULATION	DIVERSITY	RELATION TO BUILDING
	CIVIC PRIDE	SENSE OF COMMUNITY	SENSE OF COMMUNITY	COMMON GOALS	
	CIVIC DIGNITY				
	AESTHETICS				

		PUBLIC ENGAGEMENT			
		PERSONAL SCALE	SMALL SCALE	LARGE SCALE	INFO/ PEDAGOGY
CIVIC ARCHITECTURE	COMMON GROUND	OBSERVATION	TRIANGULATION	DIVERSITY	RELATION TO BUILDING
	CIVIC PRIDE	SENSE OF COMMUNITY	SENSE OF COMMUNITY	COMMON GOALS	REPUTATION OF CITY
	CIVIC DIGNITY				
	AESTHETICS				

		PUBLIC ENGAGEMENT			
		PERSONAL SCALE	SMALL SCALE	LARGE SCALE	INFO/ PEDAGOGY
CIVIC ARCHITECTURE	COMMON GROUND	OBSERVATION	TRIANGULATION	DIVERSITY	RELATION TO BUILDING
	CIVIC PRIDE	SENSE OF COMMUNITY	SENSE OF COMMUNITY	COMMON GOALS	REPUTATION OF CITY
	CIVIC DIGNITY	PARTICIPATORY OPPORTUNITY			
	AESTHETICS				



		PUBLIC ENGAGEMENT			
		PERSONAL SCALE	SMALL SCALE	LARGE SCALE	INFO/ PEDAGOGY
CIVIC ARCHITECTURE	COMMON GROUND	OBSERVATION	TRIANGULATION	DIVERSITY	RELATION TO BUILDING
	CIVIC PRIDE	SENSE OF COMMUNITY	SENSE OF COMMUNITY	COMMON GOALS	REPUTATION OF CITY
	CIVIC DIGNITY	PARTICIPATORY OPPORTUNITY	EQUAL RECOGNITION		
	AESTHETICS				

		PUBLIC ENGAGEMENT			
		PERSONAL SCALE	SMALL SCALE	LARGE SCALE	INFO/ PEDAGOGY
CIVIC ARCHITECTURE	COMMON GROUND	OBSERVATION	TRIANGULATION	DIVERSITY	RELATION TO BUILDING
	CIVIC PRIDE	SENSE OF COMMUNITY	SENSE OF COMMUNITY	COMMON GOALS	REPUTATION OF CITY
	CIVIC DIGNITY	PARTICIPATORY OPPORTUNITY	EQUAL RECOGNITION	INSTITUTIONAL ACCOUNTABILITY	
	AESTHETICS				

		PUBLIC ENGAGEMENT			
		PERSONAL SCALE	SMALL SCALE	LARGE SCALE	INFO/ PEDAGOGY
CIVIC ARCHITECTURE	COMMON GROUND	OBSERVATION	TRIANGULATION	DIVERSITY	RELATION TO BUILDING
	CIVIC PRIDE	SENSE OF COMMUNITY	SENSE OF COMMUNITY	COMMON GOALS	REPUTATION OF CITY
	CIVIC DIGNITY	PARTICIPATORY OPPORTUNITY	EQUAL RECOGNITION	INSTITUTIONAL ACCOUNTABILITY	TRANSMISSION AND RECEPTION
	AESTHETICS				

		PUBLIC ENGAGEMENT			
		PERSONAL SCALE	SMALL SCALE	LARGE SCALE	INFO/ PEDAGOGY
CIVIC ARCHITECTURE	COMMON GROUND	OBSERVATION	TRIANGULATION	DIVERSITY	RELATION TO BUILDING
	CIVIC PRIDE	SENSE OF COMMUNITY	SENSE OF COMMUNITY	COMMON GOALS	REPUTATION OF CITY
	CIVIC DIGNITY	PARTICIPATORY OPPORTUNITY	EQUAL RECOGNITION	INSTITUTIONAL ACCOUNTABILITY	TRANSMISSION AND RECEPTION
	AESTHETICS	REPRESENTATION OF ENTIRE CITY			

		PUBLIC ENGAGEMENT			
		PERSONAL SCALE	SMALL SCALE	LARGE SCALE	INFO/ PEDAGOGY
CIVIC ARCHITECTURE	COMMON GROUND	OBSERVATION	TRIANGULATION	DIVERSITY	RELATION TO BUILDING
	CIVIC PRIDE	SENSE OF COMMUNITY	SENSE OF COMMUNITY	COMMON GOALS	REPUTATION OF CITY
	CIVIC DIGNITY	PARTICIPATORY OPPORTUNITY	EQUAL RECOGNITION	INSTITUTIONAL ACCOUNTABILITY	TRANSMISSION AND RECEPTION
	AESTHETICS	REPRESENTATION OF ENTIRE CITY	ICONIC ATTRACTION		

		PUBLIC ENGAGEMENT			
		PERSONAL SCALE	SMALL SCALE	LARGE SCALE	INFO/ PEDAGOGY
CIVIC ARCHITECTURE	COMMON GROUND	OBSERVATION	TRIANGULATION	DIVERSITY	RELATION TO BUILDING
	CIVIC PRIDE	SENSE OF COMMUNITY	SENSE OF COMMUNITY	COMMON GOALS	REPUTATION OF CITY
	CIVIC DIGNITY	PARTICIPATORY OPPORTUNITY	EQUAL RECOGNITION	INSTITUTIONAL ACCOUNTABILITY	TRANSMISSION AND RECEPTION
	AESTHETICS	REPRESENTATION OF ENTIRE CITY	ICONIC ATTRACTION	SCALE	

		PUBLIC ENGAGEMENT			
		PERSONAL SCALE	SMALL SCALE	LARGE SCALE	INFO/ PEDAGOGY
CIVIC ARCHITECTURE	COMMON GROUND	OBSERVATION	TRIANGULATION	DIVERSITY	RELATION TO BUILDING
	CIVIC PRIDE	SENSE OF COMMUNITY	SENSE OF COMMUNITY	COMMON GOALS	REPUTATION OF CITY
	CIVIC DIGNITY	PARTICIPATORY OPPORTUNITY	EQUAL RECOGNITION	INSTITUTIONAL ACCOUNTABILITY	TRANSMISSION AND RECEPTION
	AESTHETICS	REPRESENTATION OF ENTIRE CITY	ICONIC ATTRACTION	SCALE	INFORMATIVE DISPLAYS

# PUBLIC ENGAGEMENT

# PROGRAM

		PERSONAL SCALE	SMALL SCALE	LARGE SCALE	INFO/ PEDAGOGY
CIVIC ARCHITECTURE	COMMON GROUND	OBSERVATION	TRIANGULATION	DIVERSITY	RELATION TO BUILDING
	CIVIC PRIDE	SENSE OF COMMUNITY	SENSE OF COMMUNITY	COMMON GOALS	REPUTATION OF CITY
	CIVIC DIGNITY	PARTICIPATORY OPPORTUNITY	EQUAL RECOGNITION	INSTITUTIONAL ACCOUNTABILITY	TRANSMISSION AND RECEPTION
	AESTHETICS	REPRESENTATION OF ENTIRE CITY	ICONIC ATTRACTION	SCALE	INFORMATIVE DISPLAYS



# PUBLIC ENGAGEMENT

# PROGRAM

		PUBLIC ENGAGEMENT			
		PERSONAL SCALE	SMALL SCALE	LARGE SCALE	INFO/ PEDAGOGY
CIVIC ARCHITECTURE	COMMON GROUND	OBSERVATION	TRIANGULATION	DIVERSITY	RELATION TO BUILDING
	CIVIC PRIDE	SENSE OF COMMUNITY	SENSE OF COMMUNITY	COMMON GOALS	REPUTATION OF CITY
	CIVIC DIGNITY	PARTICIPATORY OPPORTUNITY	EQUAL RECOGNITION	INSTITUTIONAL ACCOUNTABILITY	TRANSMISSION AND RECEPTION
	AESTHETICS	REPRESENTATION OF ENTIRE CITY	ICONIC ATTRACTION	SCALE	INFORMATIVE DISPLAYS

		PUBLIC ENGAGEMENT			
		PERSONAL SCALE	SMALL SCALE	LARGE SCALE	INFO/ PEDAGOGY
CIVIC ARCHITECTURE	COMMON GROUND	OBSERVATION	TRIANGULATION	DIVERSITY	RELATION TO BUILDING
	CIVIC PRIDE	SENSE OF COMMUNITY	SENSE OF COMMUNITY	COMMON GOALS	REPUTATION OF CITY
	CIVIC DIGNITY	PARTICIPATORY OPPORTUNITY	EQUAL RECOGNITION	INSTITUTIONAL ACCOUNTABILITY	TRANSMISSION AND RECEPTION
	AESTHETICS	REPRESENTATION OF ENTIRE CITY	ICONIC ATTRACTION	SCALE	INFORMATIVE DISPLAYS

## PROGRAM

- Food/Retail

		PUBLIC ENGAGEMENT			
		PERSONAL SCALE	SMALL SCALE	LARGE SCALE	INFO/ PEDAGOGY
CIVIC ARCHITECTURE	COMMON GROUND	OBSERVATION	TRIANGULATION	DIVERSITY	RELATION TO BUILDING
	CIVIC PRIDE	SENSE OF COMMUNITY	SENSE OF COMMUNITY	COMMON GOALS	REPUTATION OF CITY
	CIVIC DIGNITY	PARTICIPATORY OPPORTUNITY	EQUAL RECOGNITION	INSTITUTIONAL ACCOUNTABILITY	TRANSMISSION AND RECEPTION
	AESTHETICS	REPRESENTATION OF ENTIRE CITY	ICONIC ATTRACTION	SCALE	INFORMATIVE DISPLAYS

## PROGRAM

- Food/Retail
- Comitium

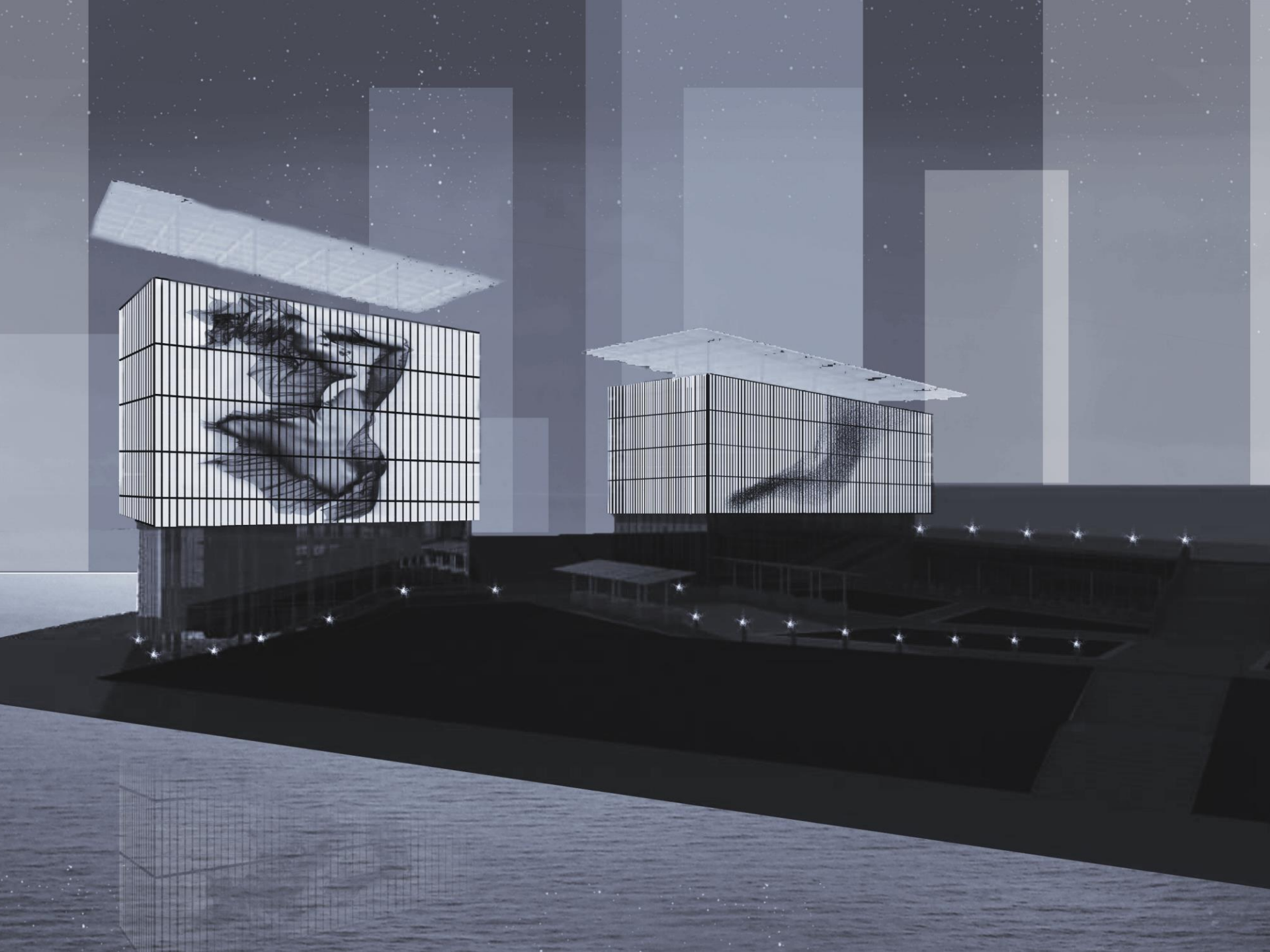
		PUBLIC ENGAGEMENT			
		PERSONAL SCALE	SMALL SCALE	LARGE SCALE	INFO/ PEDAGOGY
CIVIC ARCHITECTURE	COMMON GROUND	OBSERVATION	TRIANGULATION	DIVERSITY	RELATION TO BUILDING
	CIVIC PRIDE	SENSE OF COMMUNITY	SENSE OF COMMUNITY	COMMON GOALS	REPUTATION OF CITY
	CIVIC DIGNITY	PARTICIPATORY OPPORTUNITY	EQUAL RECOGNITION	INSTITUTIONAL ACCOUNTABILITY	TRANSMISSION AND RECEPTION
	AESTHETICS	REPRESENTATION OF ENTIRE CITY	ICONIC ATTRACTION	SCALE	INFORMATIVE DISPLAYS

## PROGRAM

- Food/Retail
  - Comitium
  - Outdoor Plaza
  - Indoor Atrium
  - Electronic Displays
  - Venue Space
  - Information Area
  - Seating
- 
- Site
  - Form
  - Art
  - Aesthetics
- 
- Restrooms
  - Mechanical
  - Storage
  - Shipment Reception



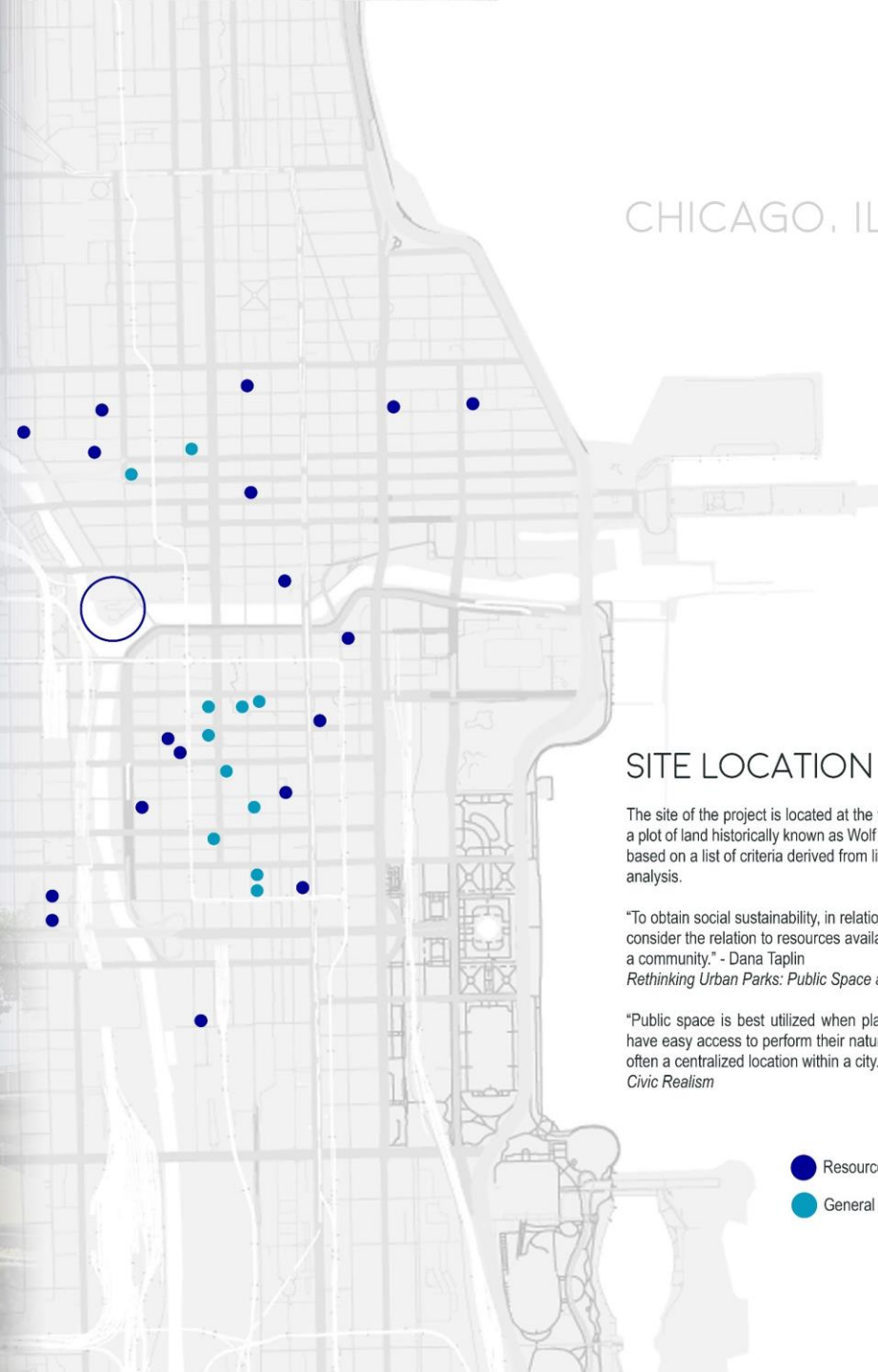




		PUBLIC ENGAGEMENT			
		PERSONAL SCALE	SMALL SCALE	LARGE SCALE	INFO/ PEDAGOGY
CIVIC ARCHITECTURE	COMMON GROUND	OBSERVATION	TRIANGULATION	DIVERSITY	RELATION TO BUILDING
	CIVIC PRIDE	SENSE OF COMMUNITY	SENSE OF COMMUNITY	COMMON GOALS	REPUTATION OF CITY
	CIVIC DIGNITY	PARTICIPATORY OPPORTUNITY	EQUAL RECOGNITION	INSTITUTIONAL ACCOUNTABILITY	TRANSMISSION AND RECEPTION
	AESTHETICS	REPRESENTATION OF ENTIRE CITY	ICONIC ATTRACTION	SCALE	INFORMATIVE DISPLAYS



# CHICAGO, IL



## SITE LOCATION

The site of the project is located at the fork of the Chicago River on a plot of land historically known as Wolf Point. The site was selected based on a list of criteria derived from literary research and iterative analysis.

"To obtain social sustainability, in relation to site selection, one must consider the relation to resources available to diverse groups within a community." - Dana Taplin  
*Rethinking Urban Parks: Public Space and Cultural Diversity*

"Public space is best utilized when placed in areas where people have easy access to perform their natural civic life activities. This is often a centralized location within a city." - Peter G. Rowe  
*Civic Realism*

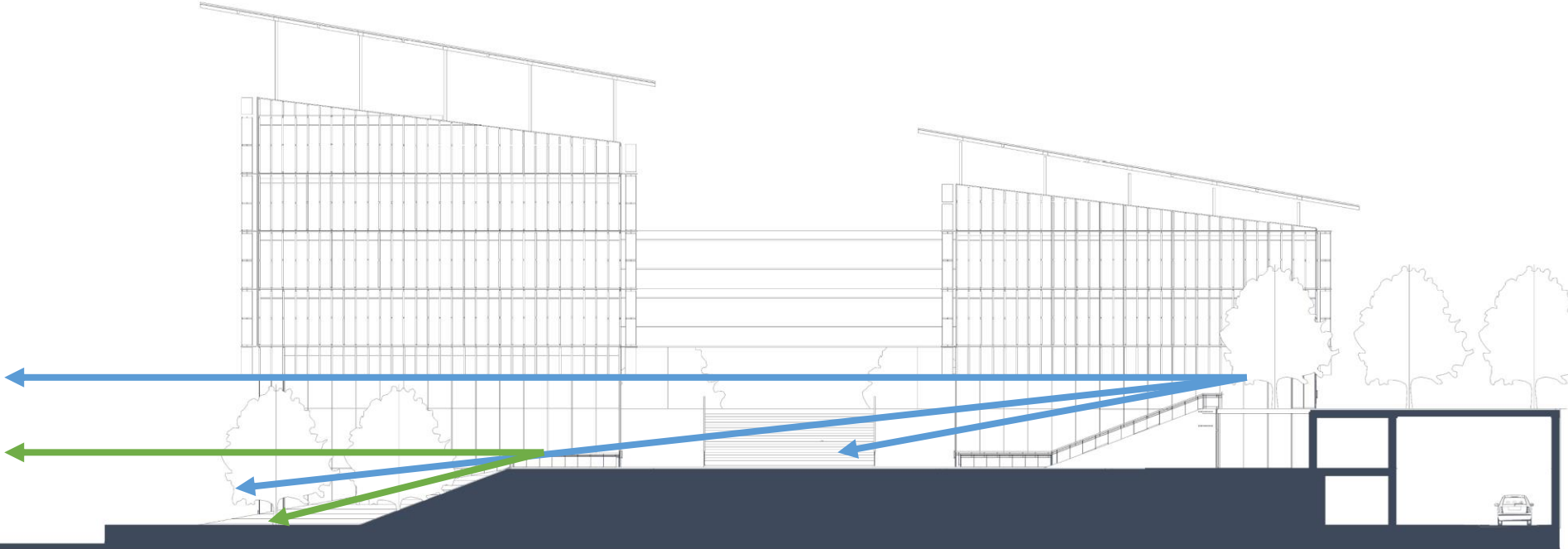
- Resources for Diverse Communities
- General Resources for All Citizens



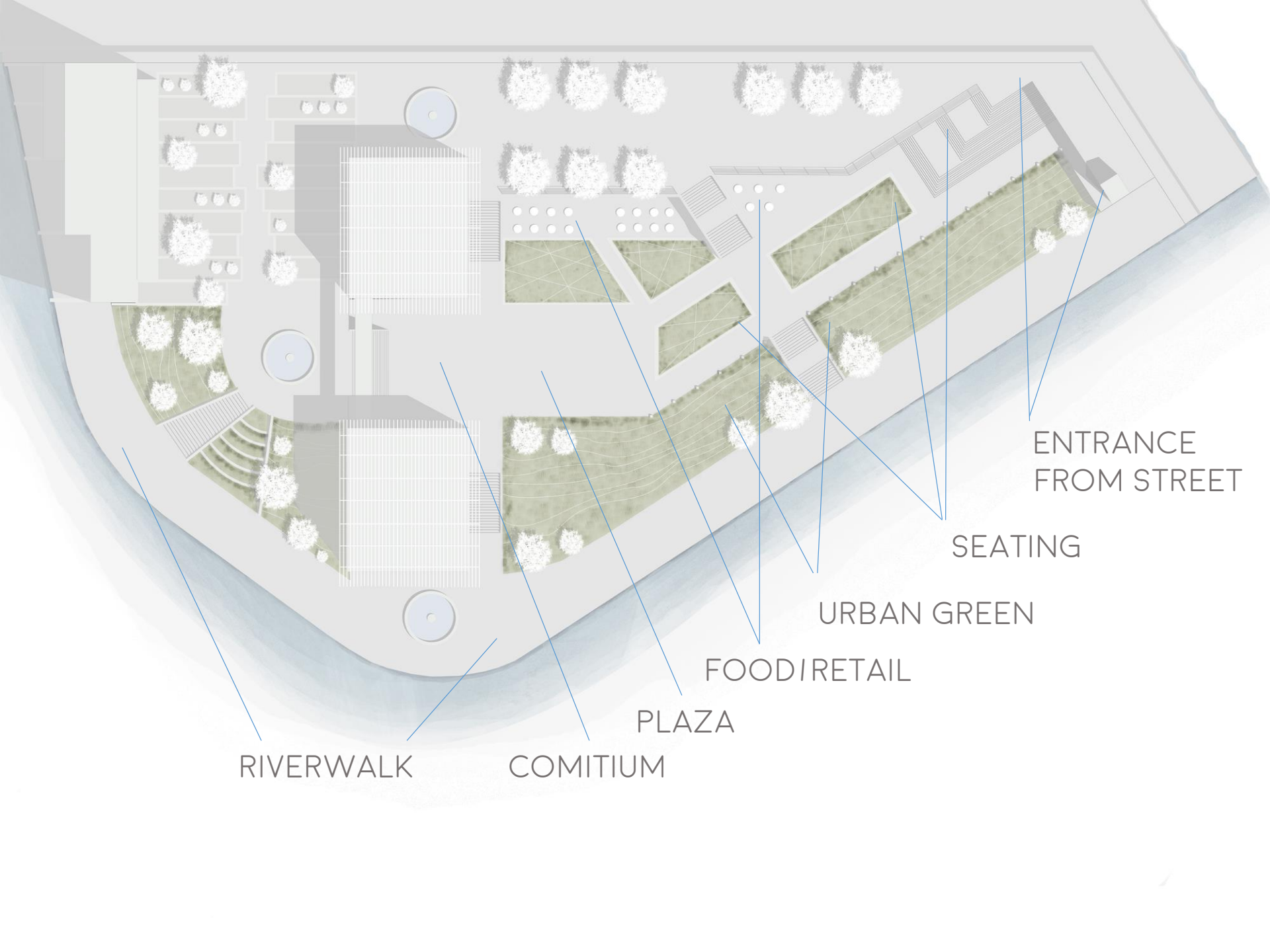
# OBSERVATION



# OBSERVATION







RIVERWALK

COMITIUM

PLAZA

FOOD|RETAIL

URBAN GREEN

SEATING

ENTRANCE FROM STREET

# POETICS

The shape of the architecture is formed by the poetics of Chicago's civic life. The reaching rooftops and the descending staircases create the angles referencing public life being relocated from the streets and extended out into the city. The stoic stance of building hints to the notion of public ownership of their community.

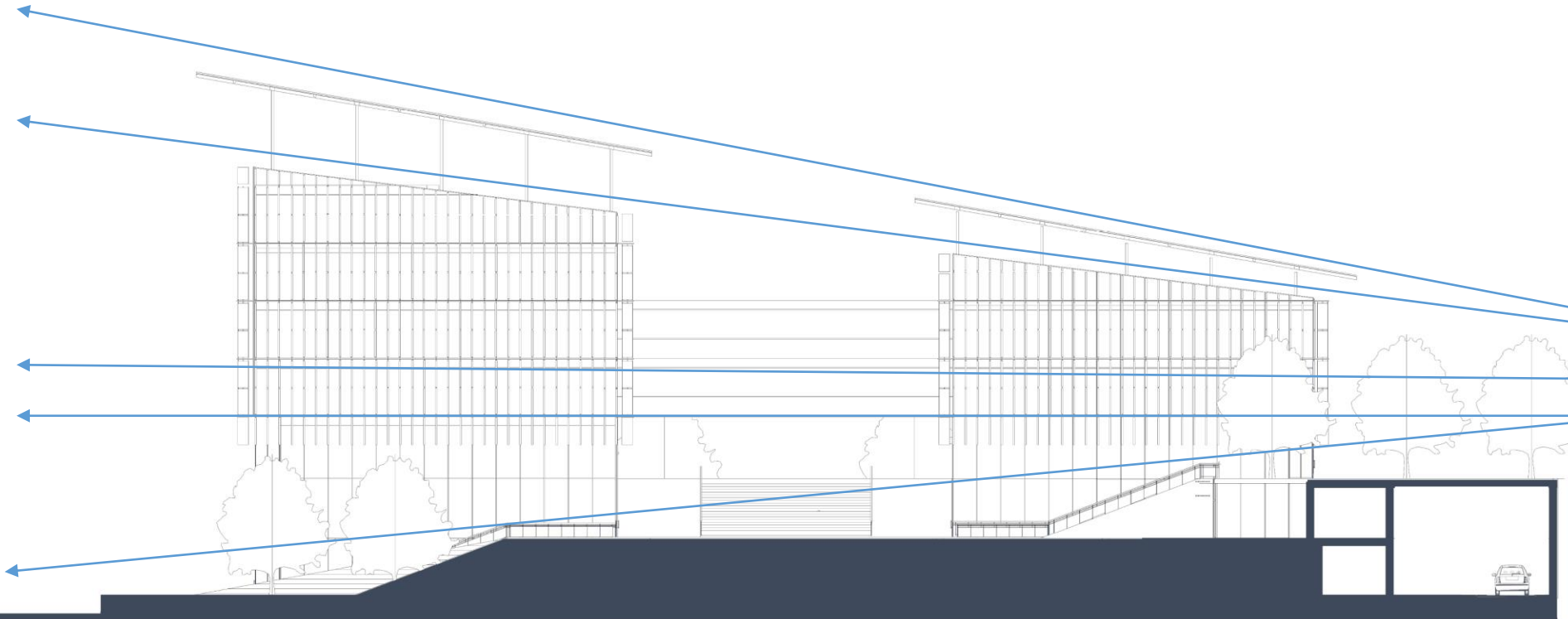
The opening between the two forms acknowledges the division between dichotomies, often resulting with one majority and one minority group. The divide also symbolizes the ever important role of transparency between the city and the people it serves, mediating the connection between opposing forces and creating common ground.



# POETICS

The shape of the architecture is formed by the poetics of Chicago's civic life. The reaching rooftops and the descending staircases create the angles referencing public life being relocated from the streets and extended out into the city. The stoic stance of building hints to the notion of public ownership of their community.

The opening between the two forms acknowledges the division between dichotomies, often resulting with one majority and one minority group. The divide also symbolizes the ever important role of transparency between the city and the people it serves, mediating the connection between opposing forces and creating common ground.





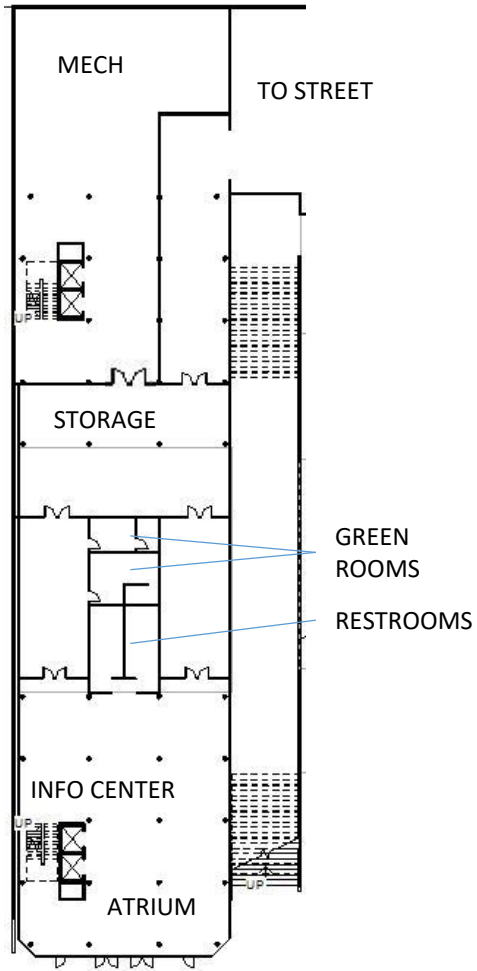
# CIRCULATION

“Because there is not one specific answer for any type of conflict, the greatest thing a city can do for its people is to provide flexible space which can be used for an array of events, ceremonies, and celebrations.”

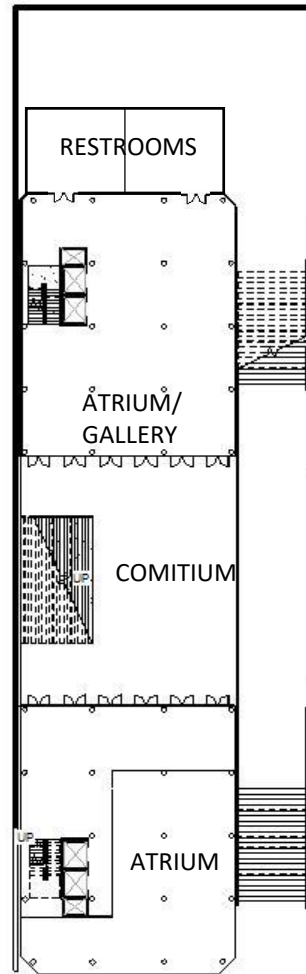
-Charles T. Goodsell *The Social Meaning of Civic Space*

The building's program is designed to be utilized for nearly any event possible. The flexible venue space allows for a multitude of events to happen in the same location. The center can also host large events of any nature. The circulation of the building is intended to draw users to multiple smaller event areas in order to discover what is going on. When the spaces are being utilized by multiple parties, users are welcome to adventure through its many spaces, finding diverse gatherings, and exploring the various facets which make up their city.

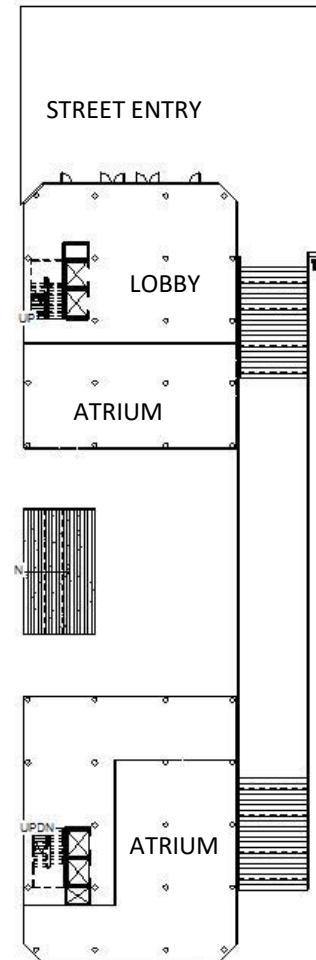
# 1<sup>ST</sup> FLOOR GROUND LEVEL



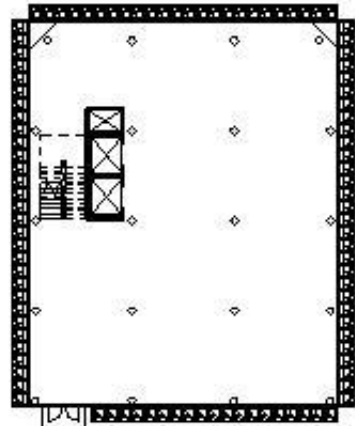
# 2<sup>ND</sup> FLOOR PLAZA LEVEL



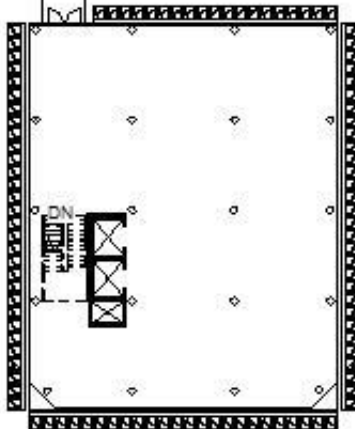
# 3<sup>RD</sup> FLOOR STREET LEVEL



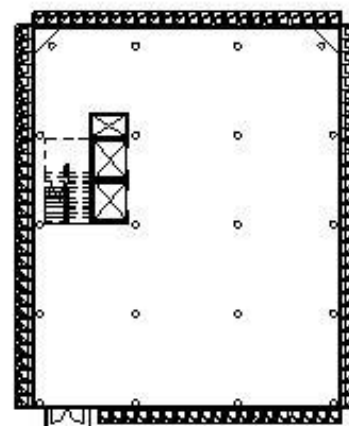
# 4<sup>TH</sup> FLOOR VENUE SPACE



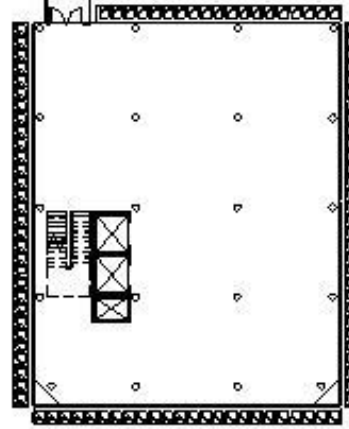
SKY  
CONNECTION



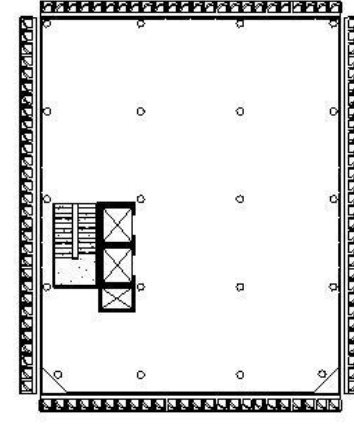
# 5<sup>TH</sup> FLOOR VENUE SPACE



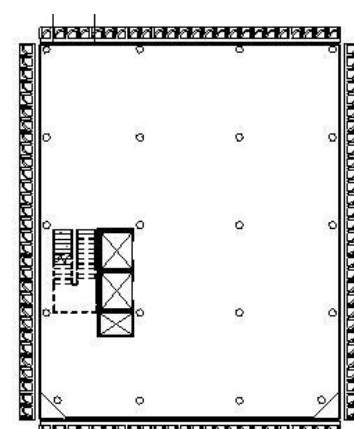
SKY  
CONNECTION



# 6<sup>TH</sup> FLOOR SOUTH WING



# 7<sup>TH</sup> FLOOR SOUTH WING



# CONCLUSION

- Civic architecture must incorporate civic pride, civic dignity, and appropriate aesthetics to effectively find common ground within a community.
- Civic architecture must accommodate to small groups, large groups, and the personal scale to fully enhance citizens quality of civic life.
- Civic architecture can influence and facilitate public engagement through equal opportunities and the discovery of a city's common culture.

# QUESTIONS & COMMENTS

© 2010 Pearson Education, Inc. All rights reserved. No part of this publication may be reproduced, stored in a retrieval system, or transmitted, in any form or by any means, electronic, mechanical, photocopying, recording, or by any information storage or retrieval system, without the prior written permission of Pearson Education, Inc.

