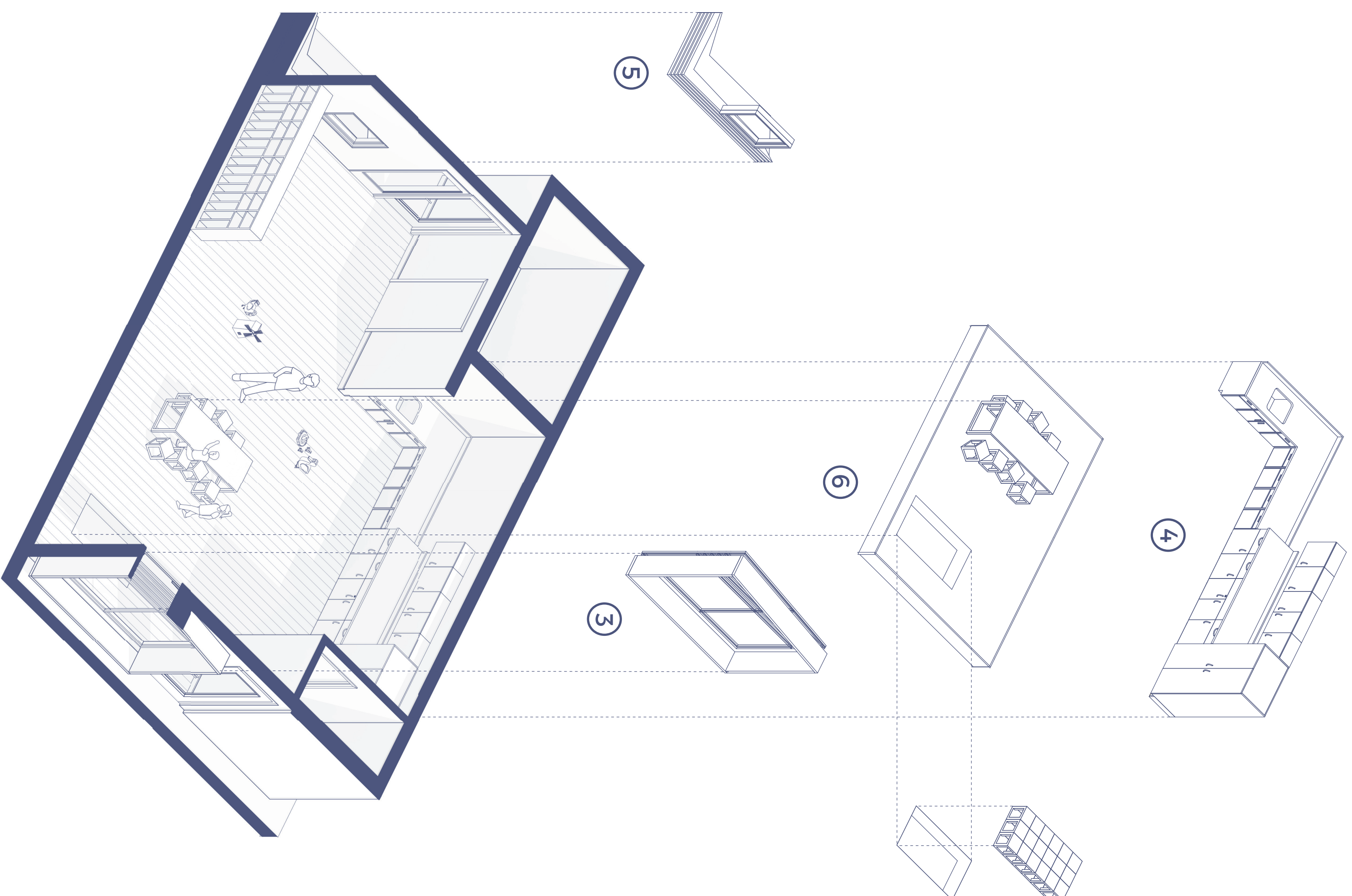


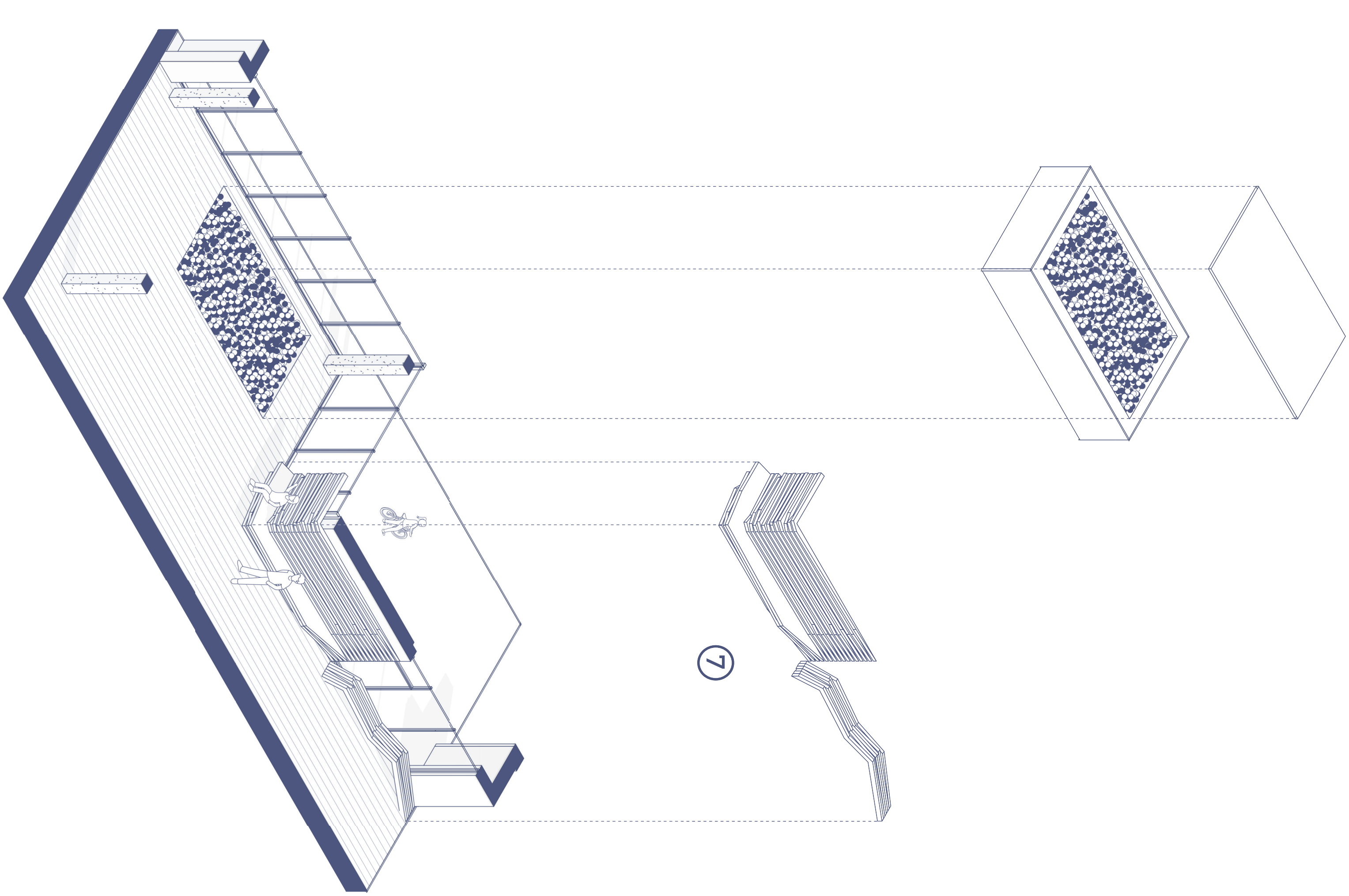
PLAY YARD EXPLODED ISOMETRIC

The exterior play yard focuses on gross motor development through natural play. Connection to water and sand and the ability to mix them is an important part of child development and understanding. The three separate play yards were created to represent the abilities of the age groups they are connected to. The north play yard is seasonal for spring, summer and fall and contains two moderate sand sand pits and a three inch deep fillable concrete wading pool and washing station. The infant through older toddler yard contains a sand pit, stream, and small beam. As we reach the final play yard for the three to five year olds the complexity of the yard becomes more involved. This area contains two sand pits, balance objects, a raised platform for dramatic play, a king of the hill mound, swings, and a wading stream system with water pumps.



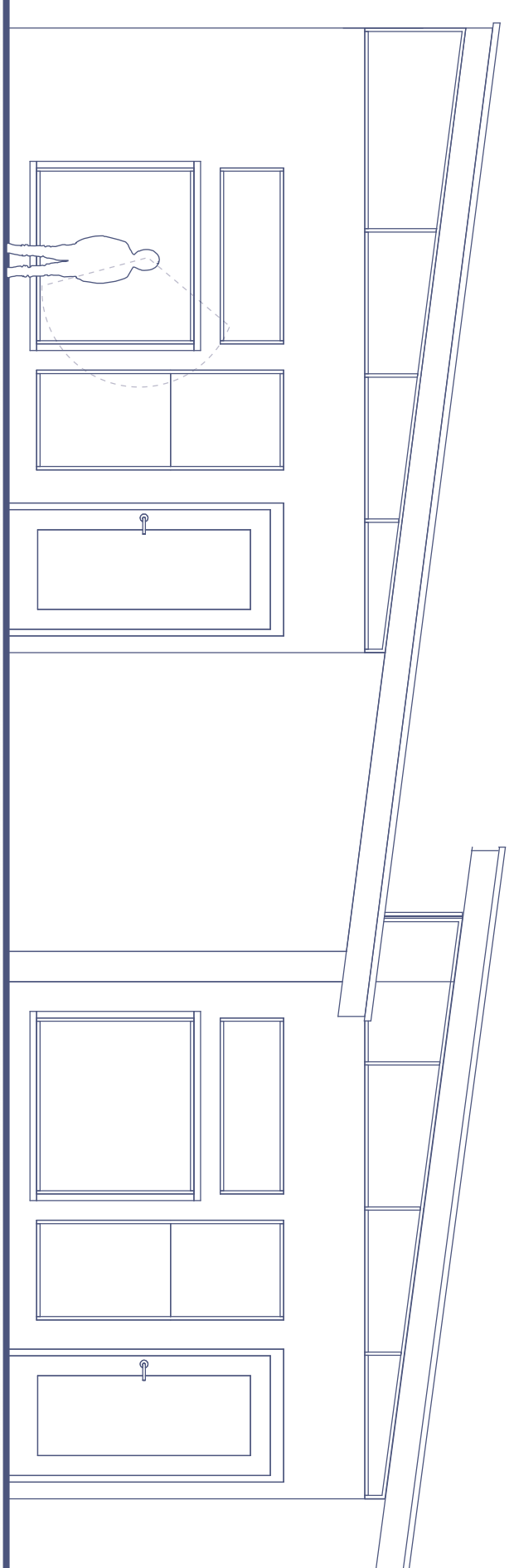
CLASSROOM EXPLODED ISOMETRIC

Each classroom was specifically designed to accommodate a large minimum square footage per child. Currently, each classroom has a minimum of 82 square feet per child, which unfortunately has become the standard. According to several research studies, a good floor per child should be set as the minimum standard. This allows for quiet and active areas for different types of behavioral patterns. Other key influential design aspects include a pit and box chair design adopted from the Delft Montessori School. These chairs make the classroom flexible by either fitting in the pit or being removed for seating by the table or within the pit. The kitchen cabinetry was also designed to accommodate each specific age group from 3-5 while also providing cabinetry designed for adults. The children have their own hand washing and art sink, and storage. Finally upon entry of each of the classrooms, there is a viewing port at their eye level and a "window" texture wall that provides seating for that age group.

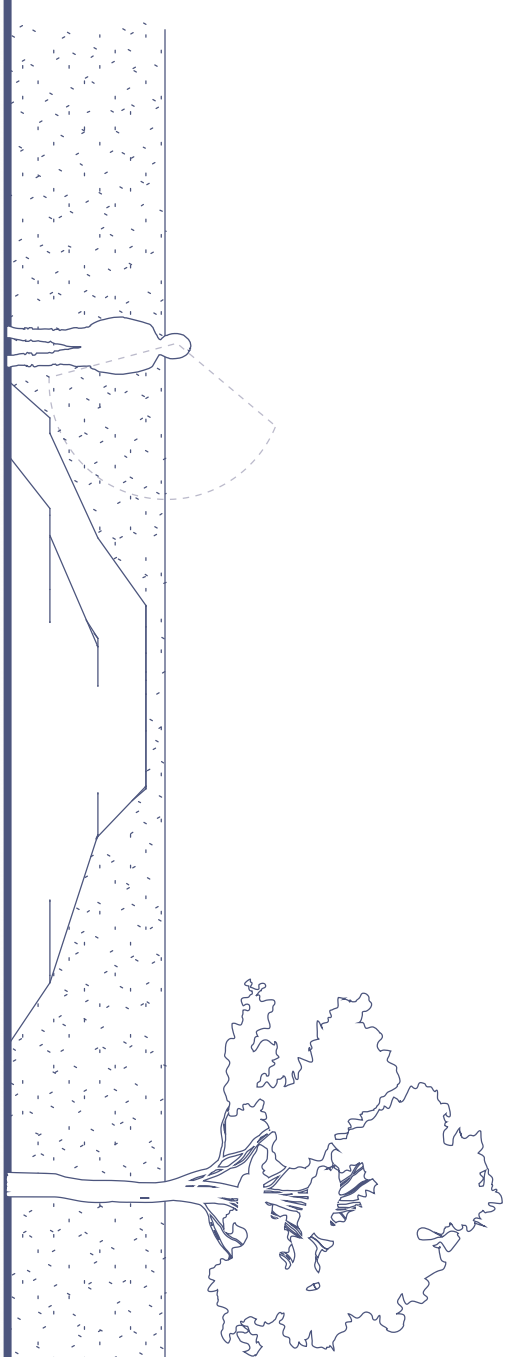


GROSS MOTOR EXPLODED ISOMETRIC

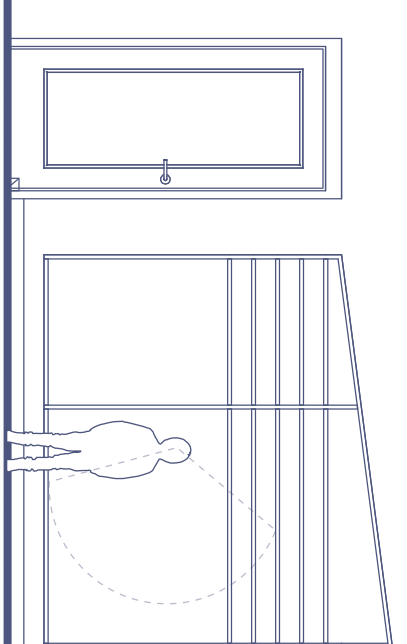
The gross motor area is meant to combine areas of circulation into one space that encourages and connects all activities. This "roof" encloses a climbable hill pit and a large open area for interchangeable activities. The "window" wall extends along the corridor providing seating where necessary and in open areas of glazing milk from the floor as a play bench to climb upon or hide beneath. The gross motor area is meant to inspire children on the way to their classrooms, so that their experience can then be choreographed and displayed within the classrooms.



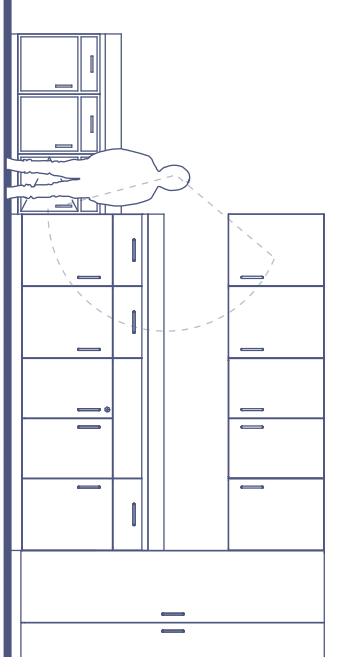
1 CLASSROOM FACADE W/ SITTING WINDOW
SCALE: 1/4" = 1'-0"



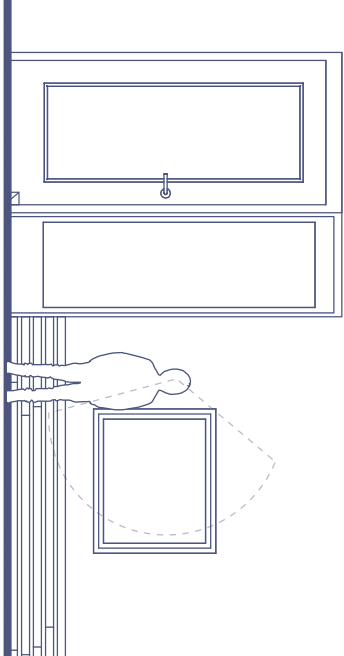
2 KING OF THE HILL MOUND
SCALE: 1/4" = 1'-0"



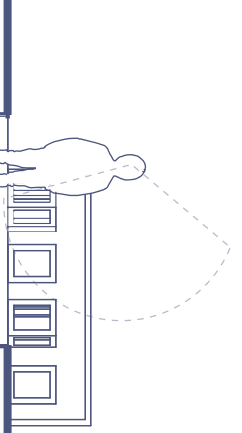
3 INTERIOR CLASSROOM WINDOW
SCALE: 1/4" = 1'-0"



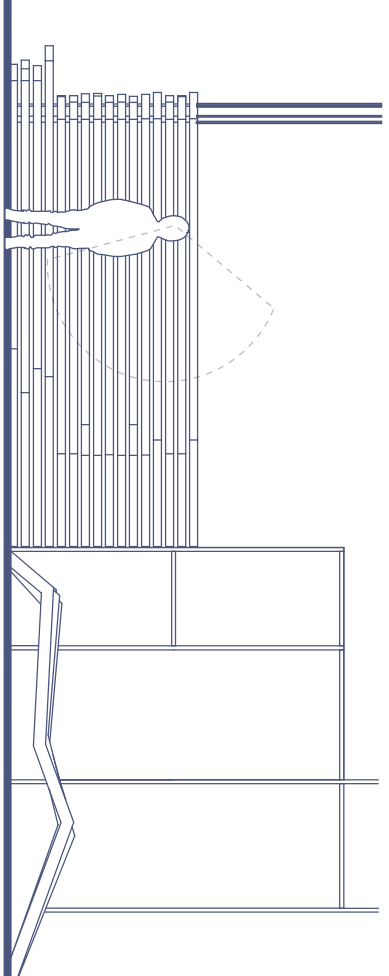
4 CLASSROOM KITCHENETTE
SCALE: 1/4" = 1'-0"



5 CLASSROOM ENTRY W/ SEATING
SCALE: 1/4" = 1'-0"



6 CLASSROOM SEATING
SCALE: 1/4" = 1'-0"



7 GROSS MOTOR SEATING W/ PLAY BENCH
SCALE: 1/4" = 1'-0"

