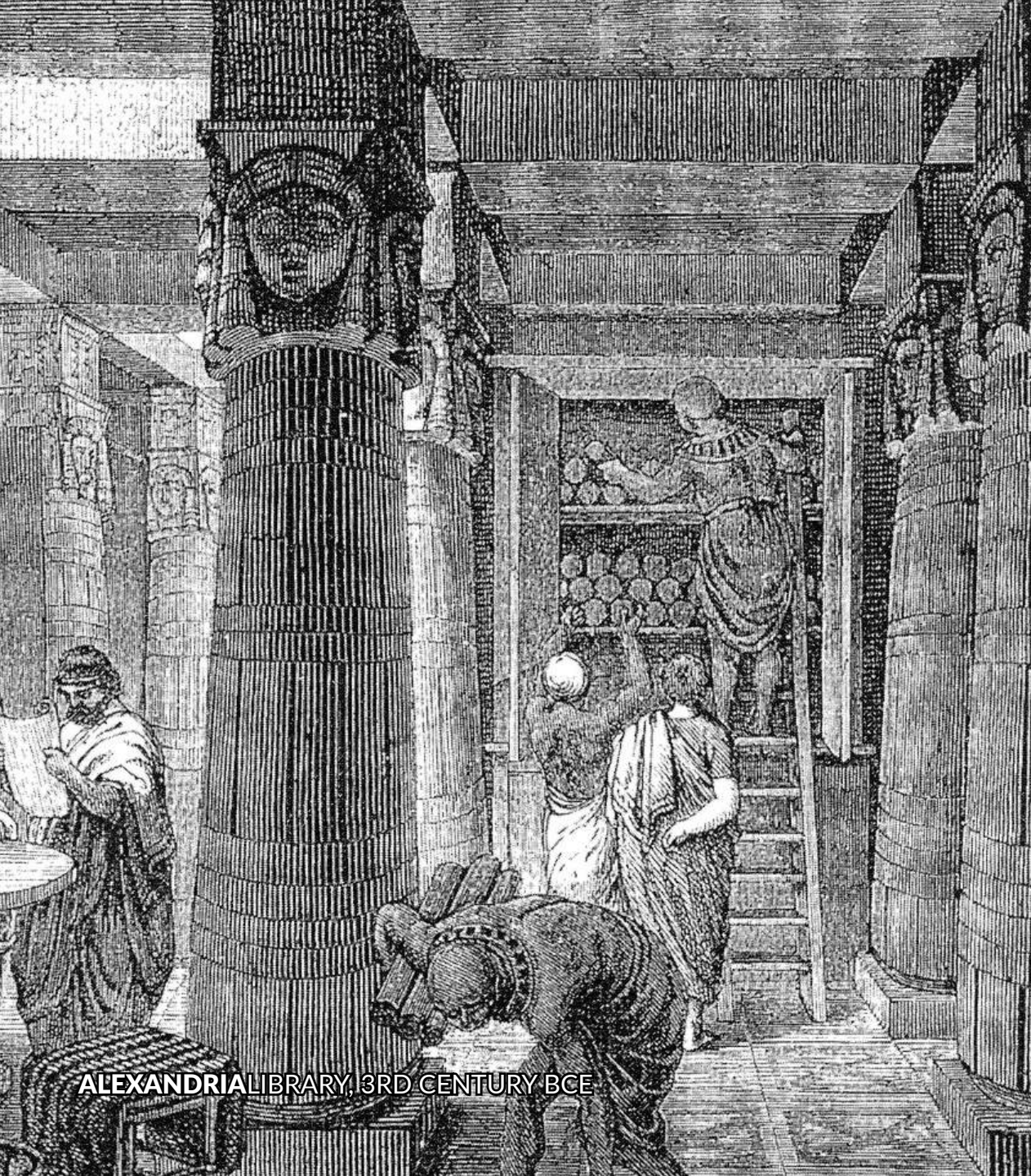


The image features a white background with various black geometric shapes, including rectangles, squares, and irregular polygons. A prominent horizontal yellow line with a slight gradient runs across the middle of the page. The central focus is a large black rectangle containing white text.

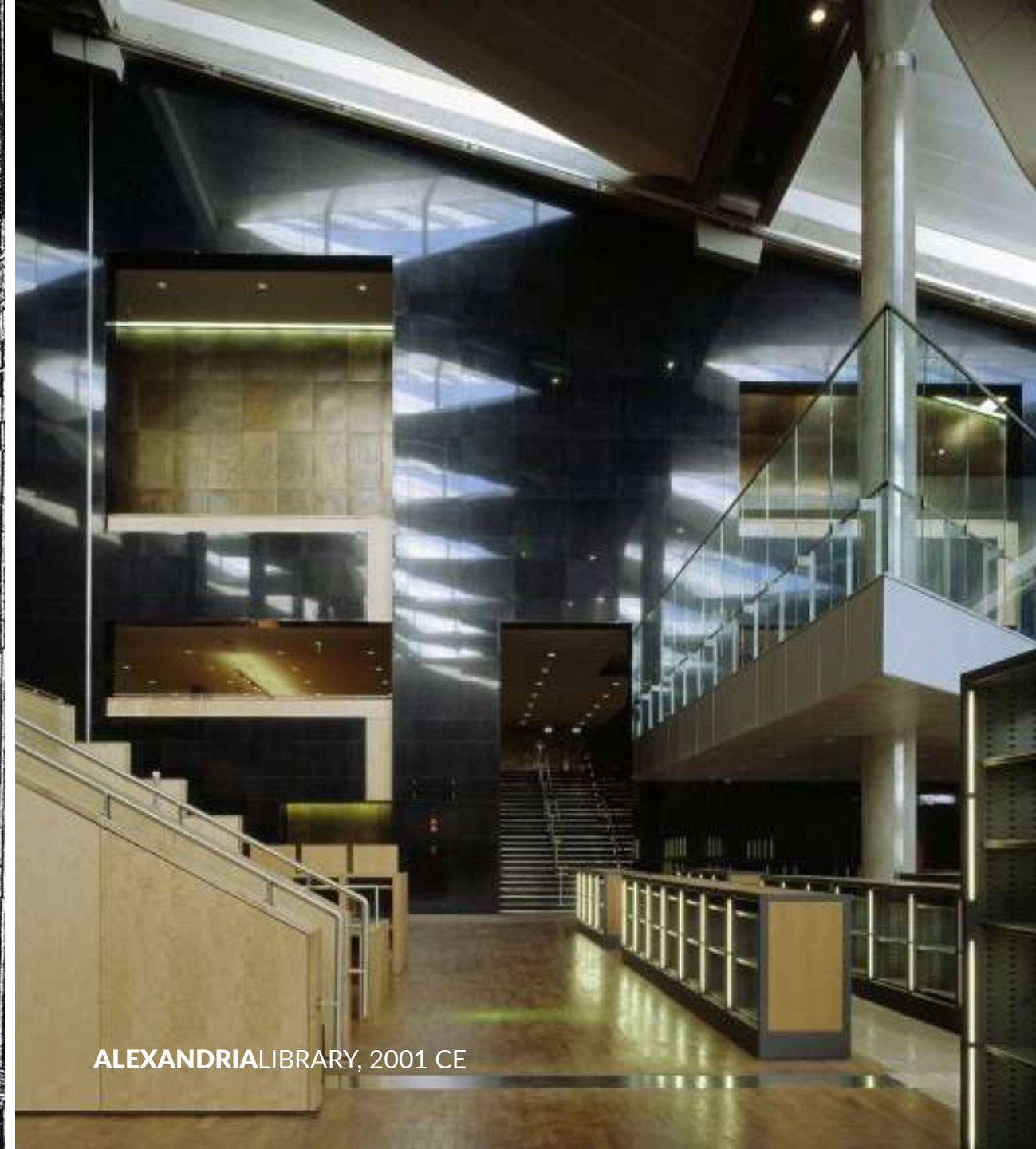
EMERGING PUBLIC

The Public Library's Role in Community

WHAT IS THE **ROLE** OF THE **LIBRARY**?



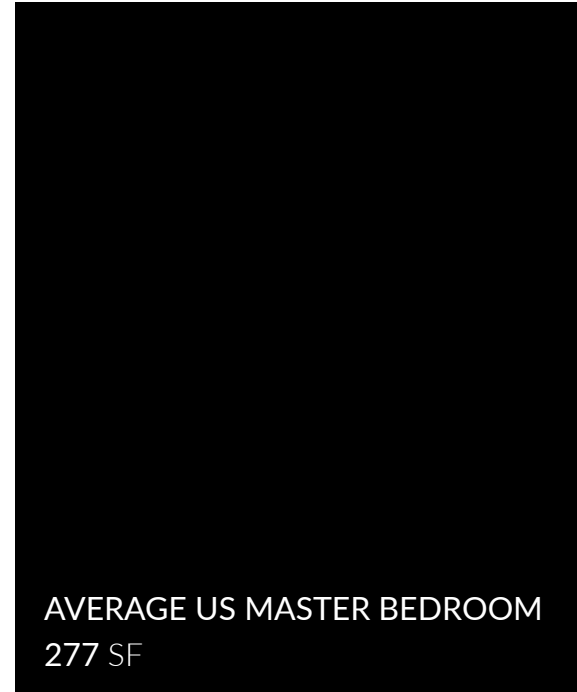
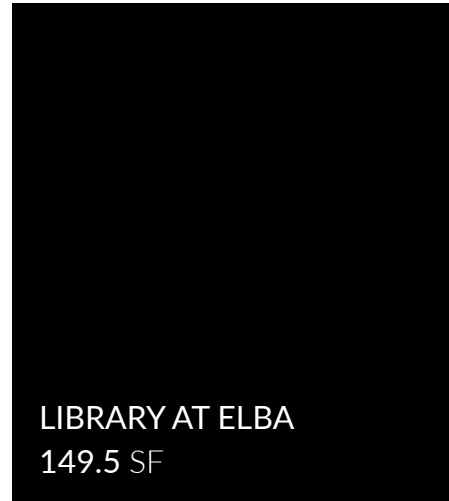
ALEXANDRIALIBRARY, 3RD CENTURY BCE



ALEXANDRIALIBRARY, 2001 CE



URUKMESOPOTAMIA



ELBA LIBRARY 2500 BCE





EXETERLIBRARY



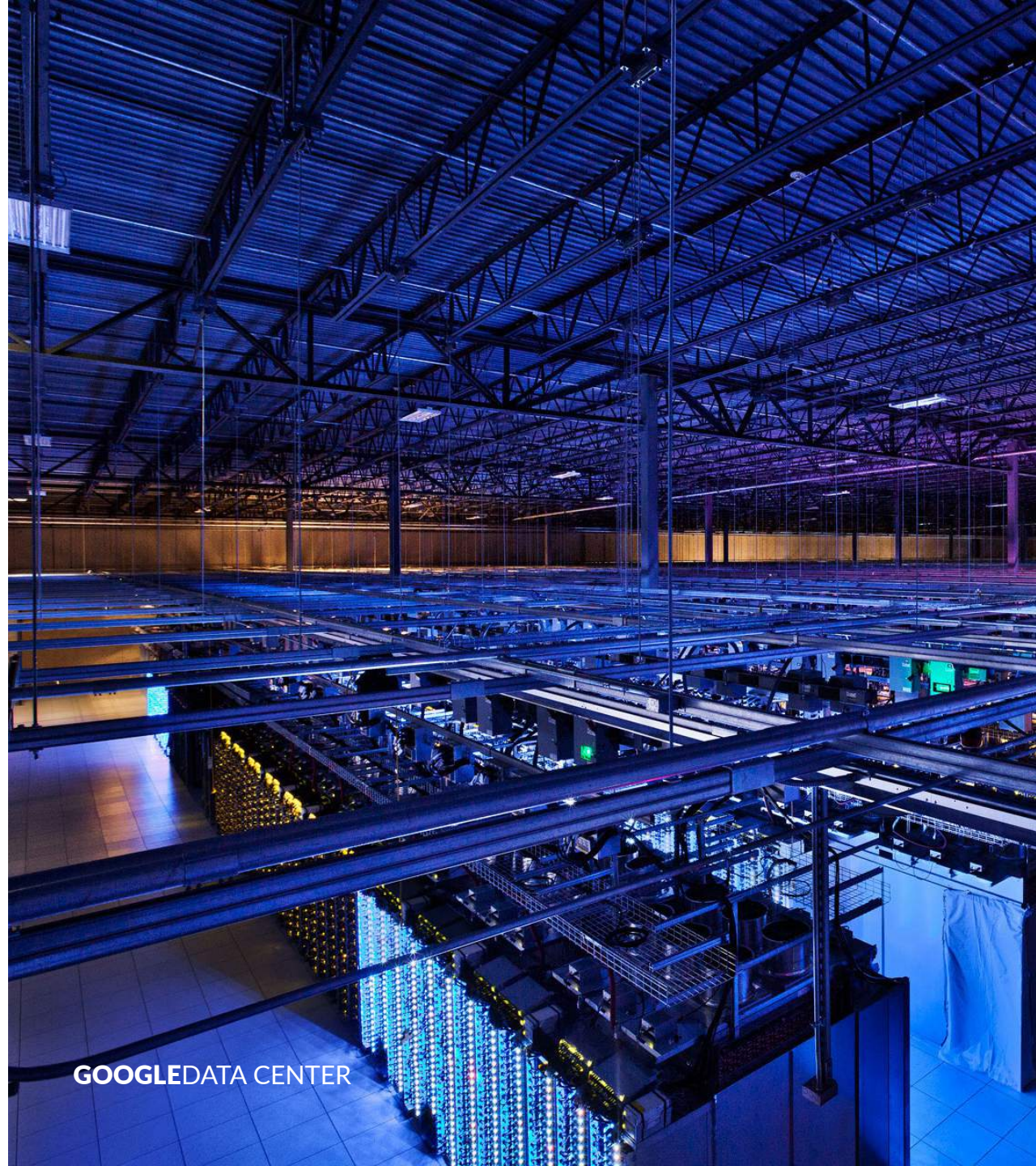
GRIMMCENTER



LIBRARIES CONNECT **INFORMATION, PEOPLE & PLACE**



RIJKSMUSEUM



GOOGLE DATA CENTER

“the **space of flows** . . . links up distant locales around shared functions and meanings on the basis of electronic circuits and fast transportation corridors, while isolating and subduing the logic of experience embodied in the **space of places.**”

-Manuel Castells, *Rise of the Network Society*



SPACE OF PLACES



SPACE OF FLOWS

AS THE WAYS WE CONNECT TO INFORMATION,
PEOPLE & PLACE HAVE CHANGED,

HOW CAN LIBRARY ARCHITECTURE ADAPT?

LIBRARY PRECEDENTS

PRECEDENT ANALYSIS

MUSASHINO ART UNIVERSITY LIBRARY

SOU FUJIMOTO ARCHITECTS

Location: Tokyo, Japan

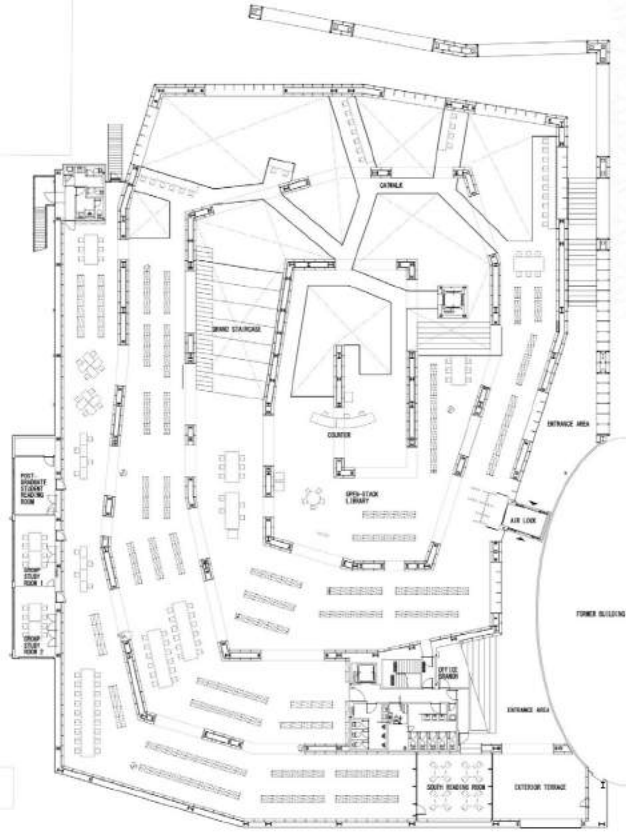
Size: 2883.18 sqm

Year: 2010

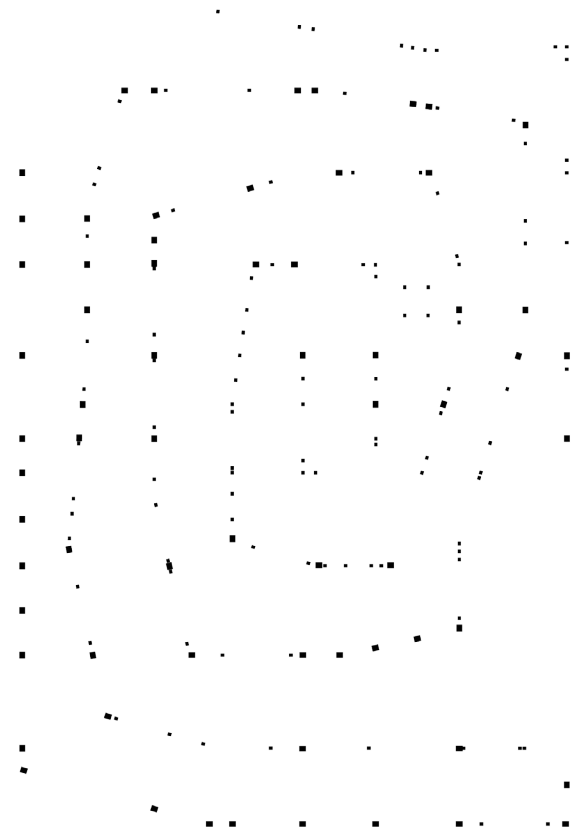


PRECEDENT ANALYSIS

MUSASHINO ART UNIVERSITY LIBRARY

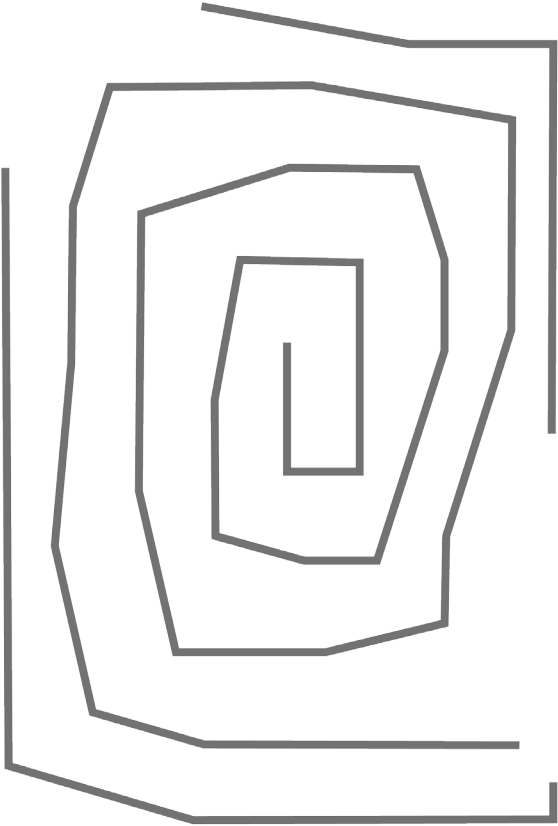


FLOOR PLAN

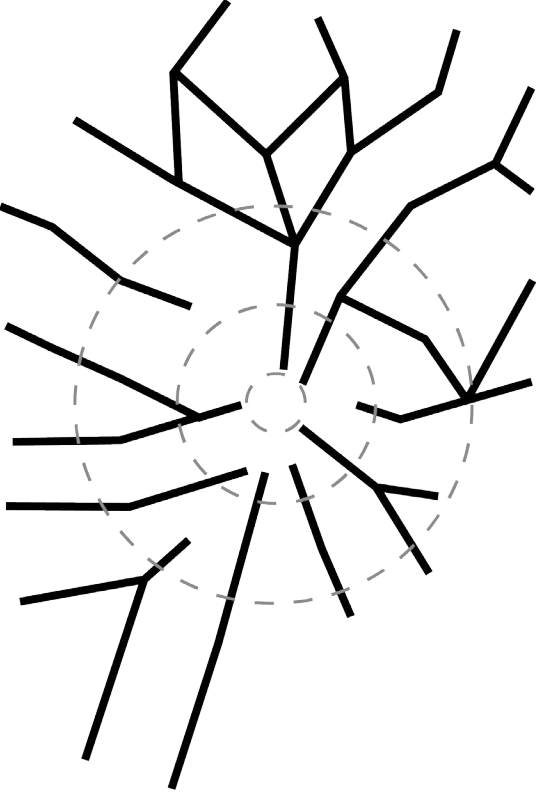


STRUCTURE

PRECEDENT ANALYSIS
MUSASHINO ART UNIVERSITY LIBRARY



ORGANIZATION



HIERARCHY

PRECEDENT ANALYSIS

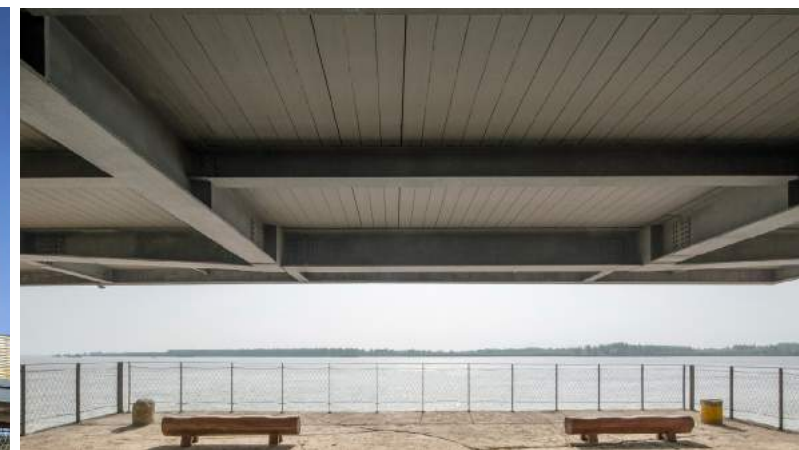
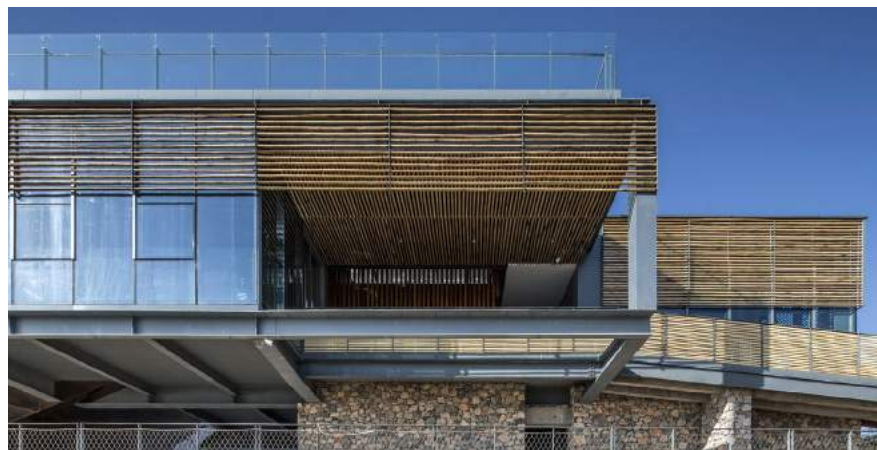
LIBRARY AT THE QUAY

ATA STUDIO

Location: Riverside Park, China

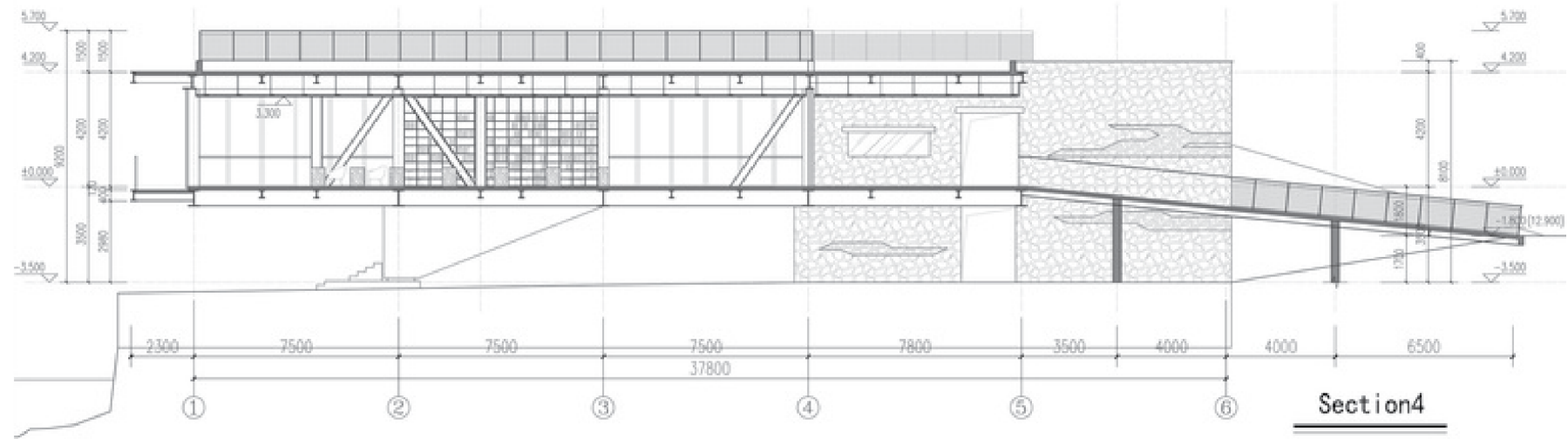
Size: 500 sqm

Year: 2014

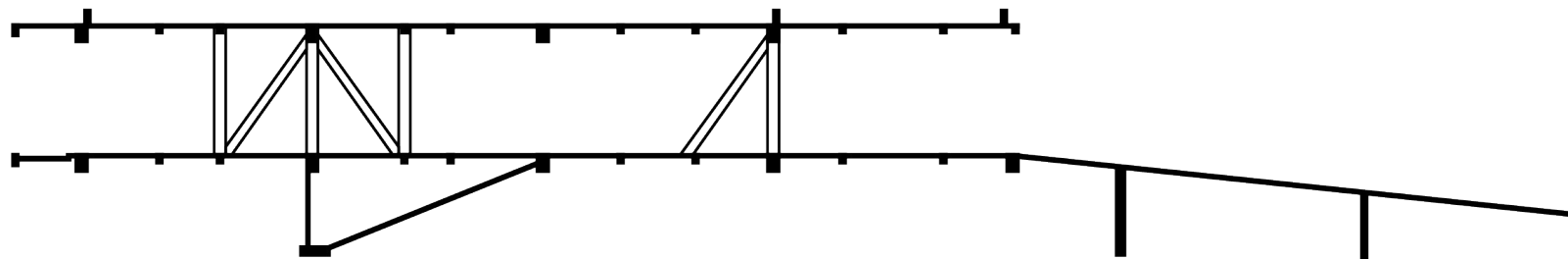


PRECEDENT ANALYSIS

LIBRARY AT THE QUAY

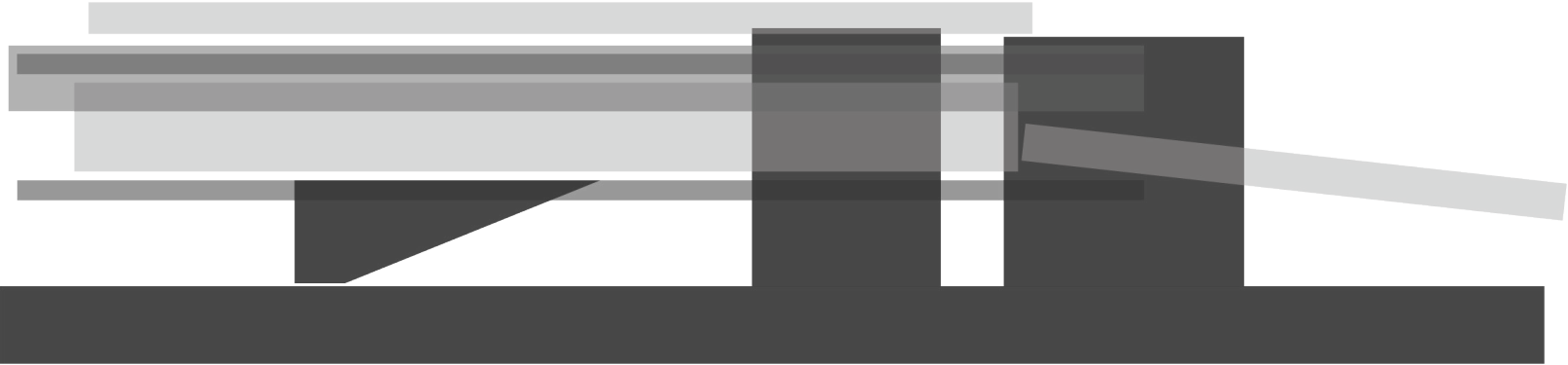


SECTION

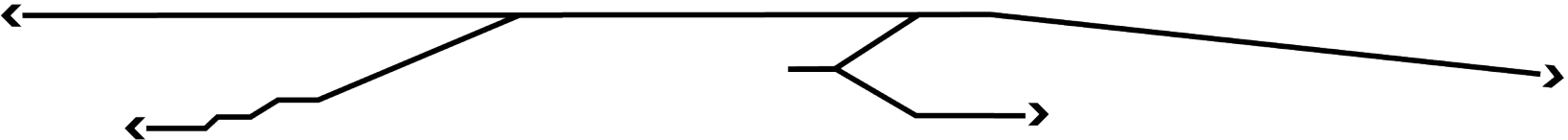


STRUCTURE

PRECEDENT ANALYSIS
LIBRARY AT THE QUAY

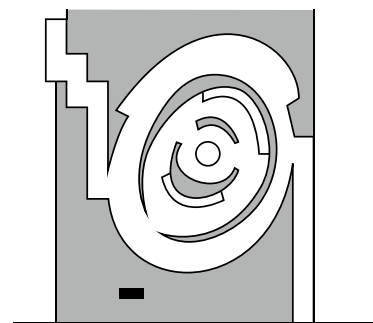


MATERIAL LAYERS

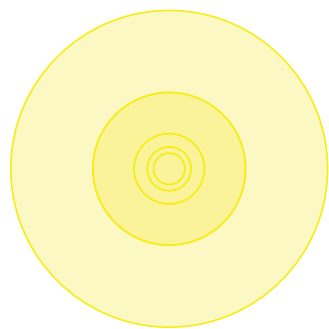


CIRCULATION

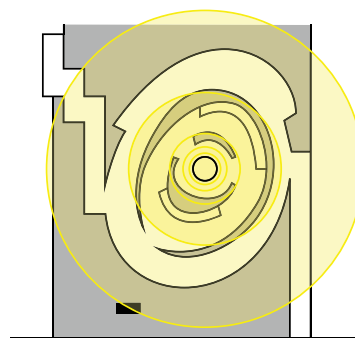
DIGITAL MEDIA PRECEDENTS



PHYSICAL PLAN

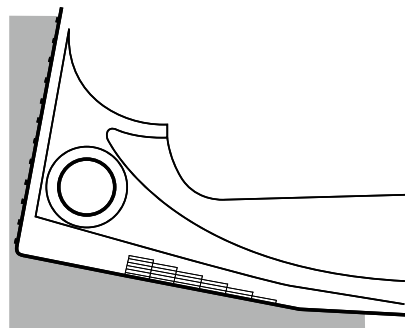


DIGITAL INTERFACE ISOLATED

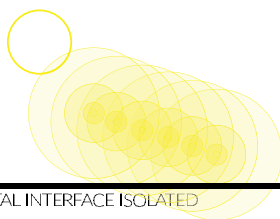


AUGMENTED OVERLAY

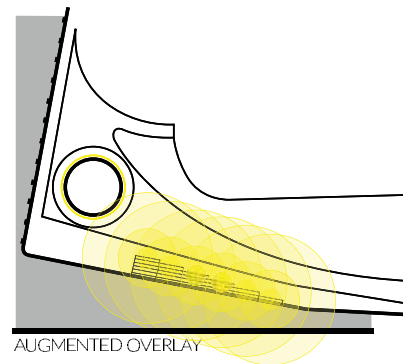
THE THREE ISLANDS OPEN RESEARCH TEAM, COPENHAGEN, DENMARK



PHYSICAL PLAN

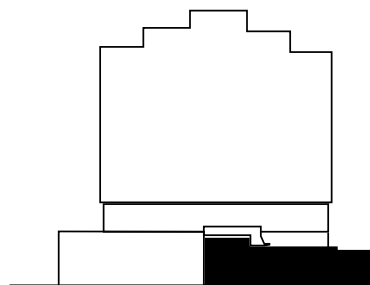


DIGITAL INTERFACE ISOLATED

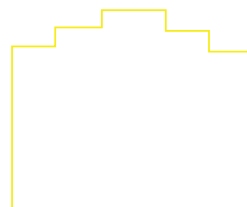


AUGMENTED OVERLAY

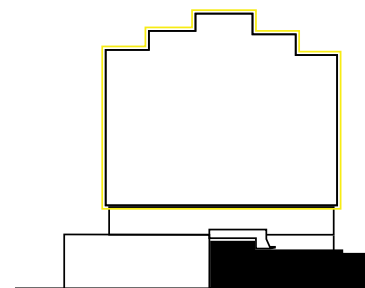
GREETING TO THE SUN NIKOLA BASIC, ZADAR, CROATIA



PHYSICAL ELEVATION



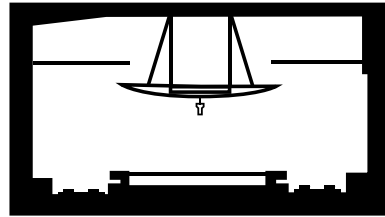
DIGITAL INTERFACE ISOLATED



AUGMENTED OVERLAY

DIGITAL/PHYSICAL OVERLAY

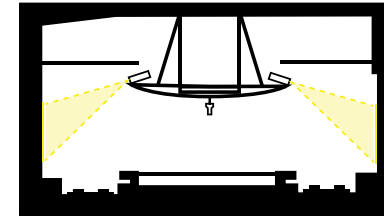
LED ACTION FAÇADE LANGARITA NAVARRO ARQUITECTOS, MADRID, SPAIN



PHYSICAL SECTION

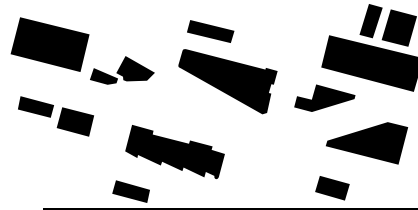


DIGITAL INTERFACE ISOLATED

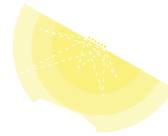


AUGMENTED OVERLAY

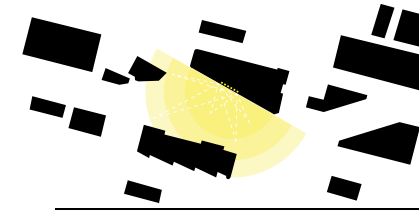
ELSEWHERE TANIA RUIZ GUTIERREZ, MALMO, SWEDEN



PHYSICAL FIGURE GROUND

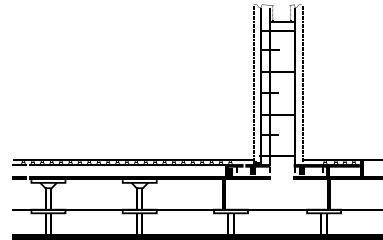


DIGITAL INTERFACE ISOLATED

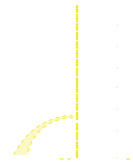


AUGMENTED OVERLAY

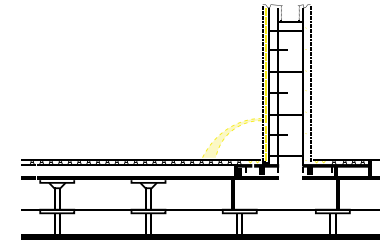
MOTO WALL HEAVY PROJECT, ST. LOUIS, USA



PHYSICAL SECTION

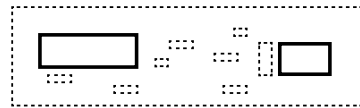


DIGITAL INTERFACE ISOLATED



AUGMENTED OVERLAY

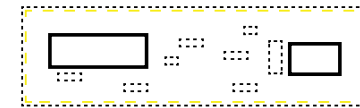
CROWN FOUNTAIN JAUME PLENSA, CHICAGO, USA



PHYSICAL FIGURE GROUND



DIGITAL INTERFACE ISOLATED



AUGMENTED OVERLAY

DIGITAL/PHYSICALOVERLAY

DIGITAL WATER PAVILION, CARLO RATTI, ZARAGOZA, SPAIN

CHALLENGES & OPPORTUNITIES

“This [internet] of course drives the **amount** of information up, and the **quality** of any given piece of information down, ad absurdum. Finding and having information is no longer of much benefit unless one also has ways of knowing its reliability and reputation [...]

Among the strategies used to interpret the rising flood of information, the one of most interest here is **context.**”

-Malcolm McCullough, *Augmented Urban Spaces:
Articulating the Physical and Electronic City*

HOW CAN **ARCHITECTURE** CREATE CONTEXT FOR INFORMATION PRESENTED IN **PUBLIC LIBRARIES** THROUGH BOTH PHYSICAL AND DIGITAL MEDIA?

- 1** Reveal the impacts of different types of connections by sharing physical space along a spectrum of spaces that connect people, information and places in a variety of ways (global networks such as the internet, local networks such as sight lines).
- 2** Create flexible spaces that can accommodate a variety of ways to connect people to information and each other.
- 3** Within the flexible spaces, maintain a connection between people, information, and the city.

PROGRAM INVESTIGATION

EXPERT INTERVIEWS

“Knowledge is not cheap. It takes an expert to make it accessible. And it needs to be preserved for the future.”

-Kathy Enger, Northern Lights Library Network

“The big thing is, because libraries and technologies and communities are always changing, creating spaces that will remain relevant over a long period of time [...] The key thing is flexibility built in.”

-Tim Dirks, Fargo Public Library Director

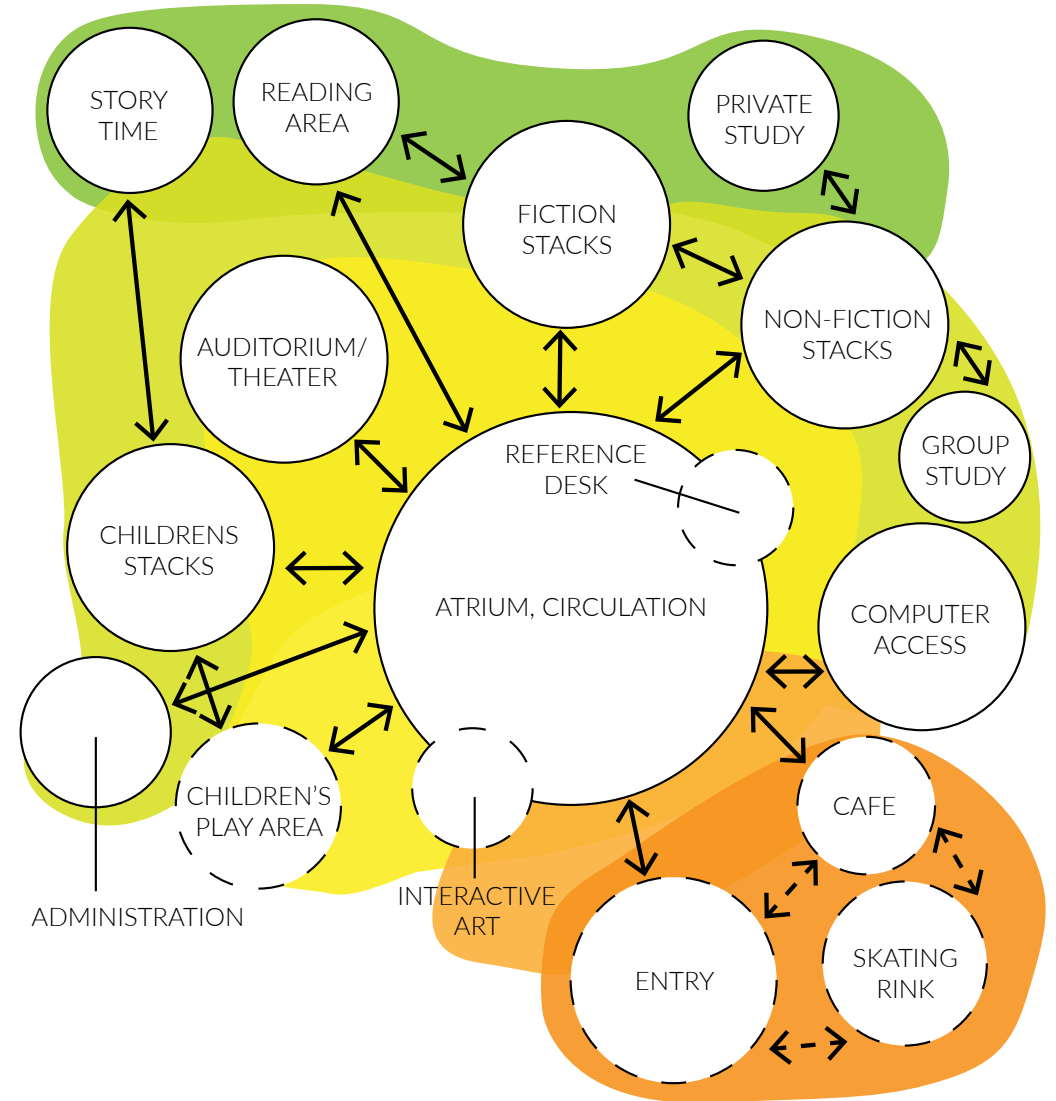
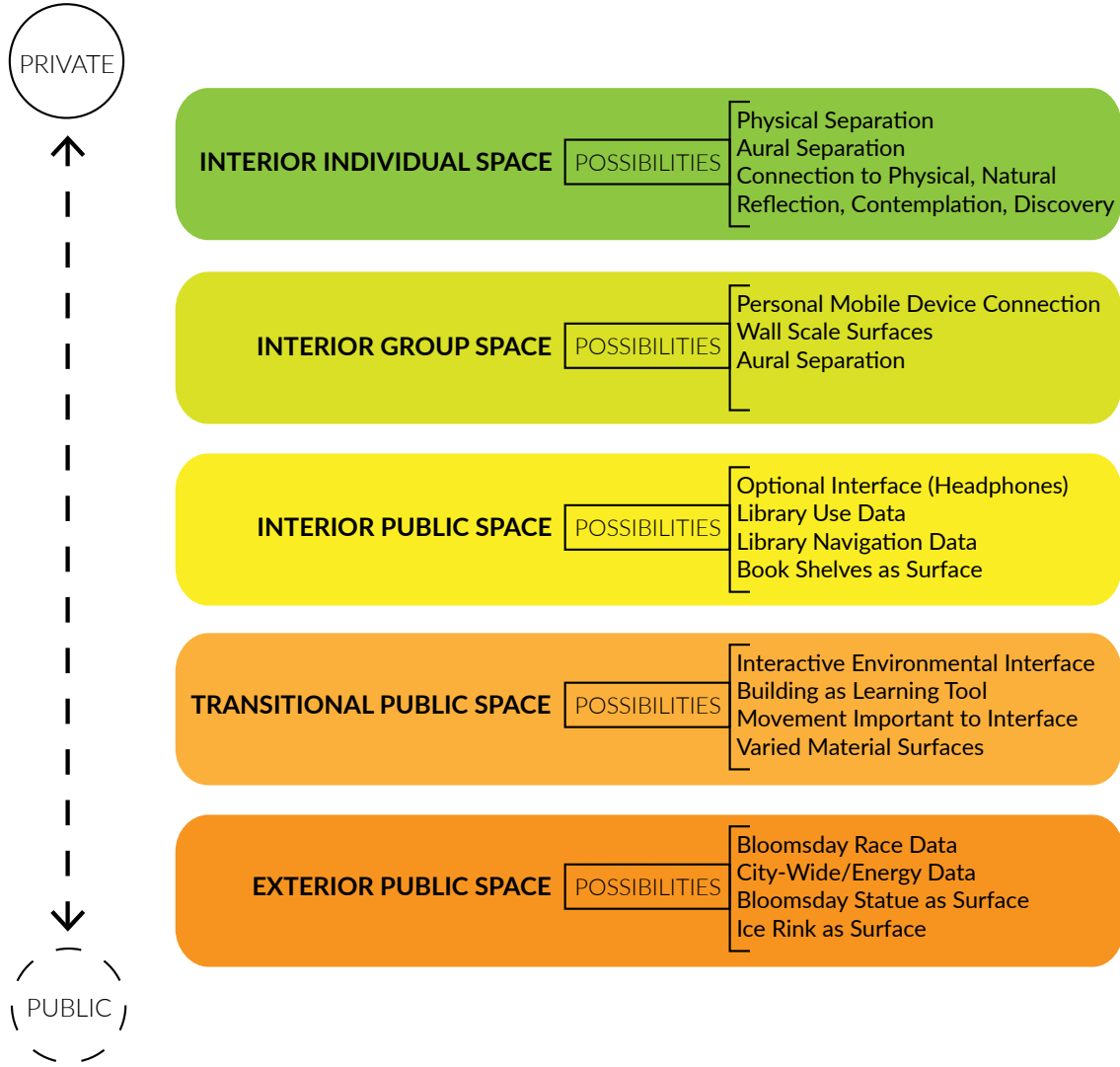
Additional Interviewees

Sandra Hannahs, West Fargo Public Library Director

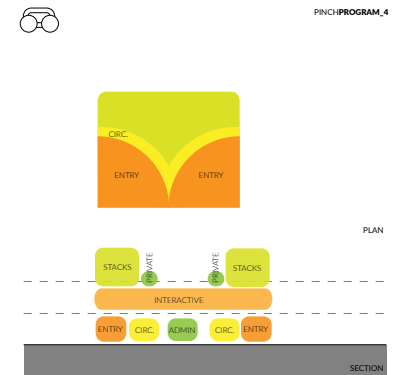
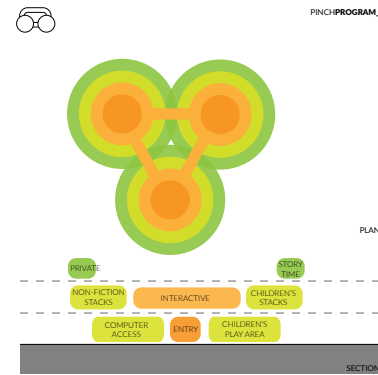
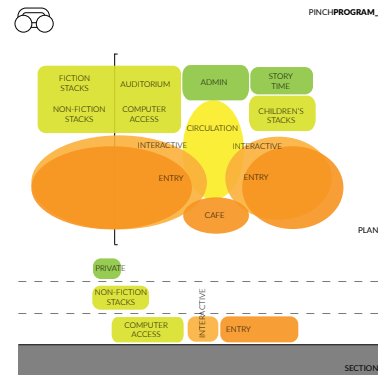
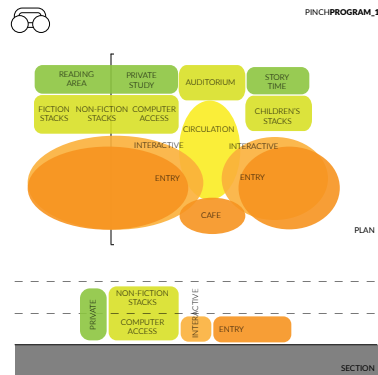
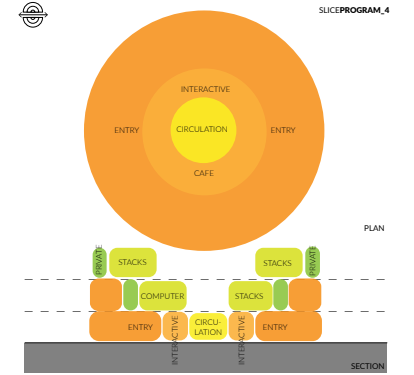
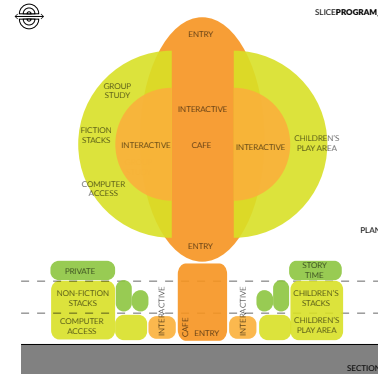
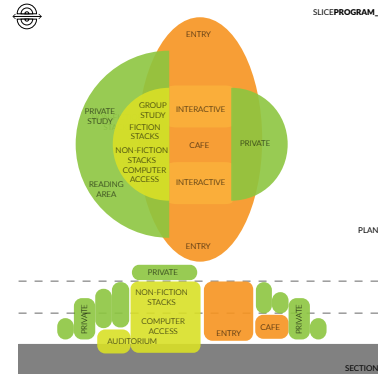
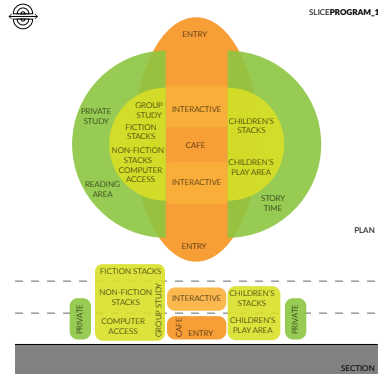
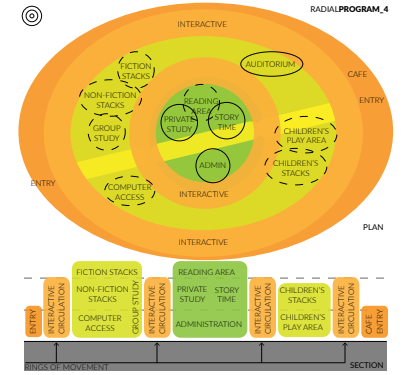
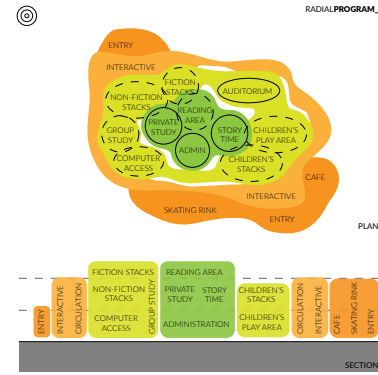
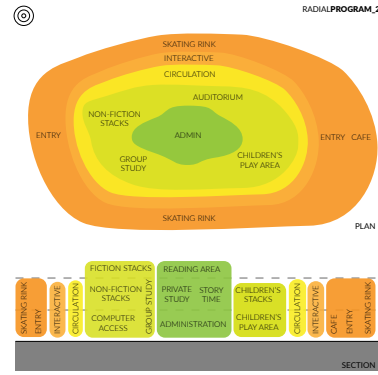
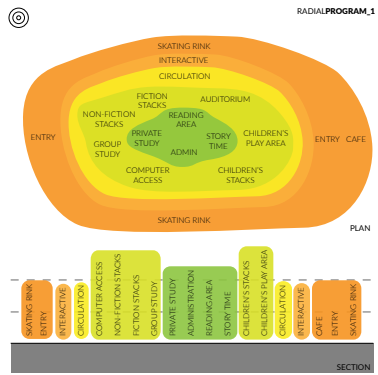
Laura Probst, Concordia Carl B. Ylvisaker Library Director

MEDIAPROGRAM

OVERLAYPROGRAM



PROGRAMINVESTIGATION

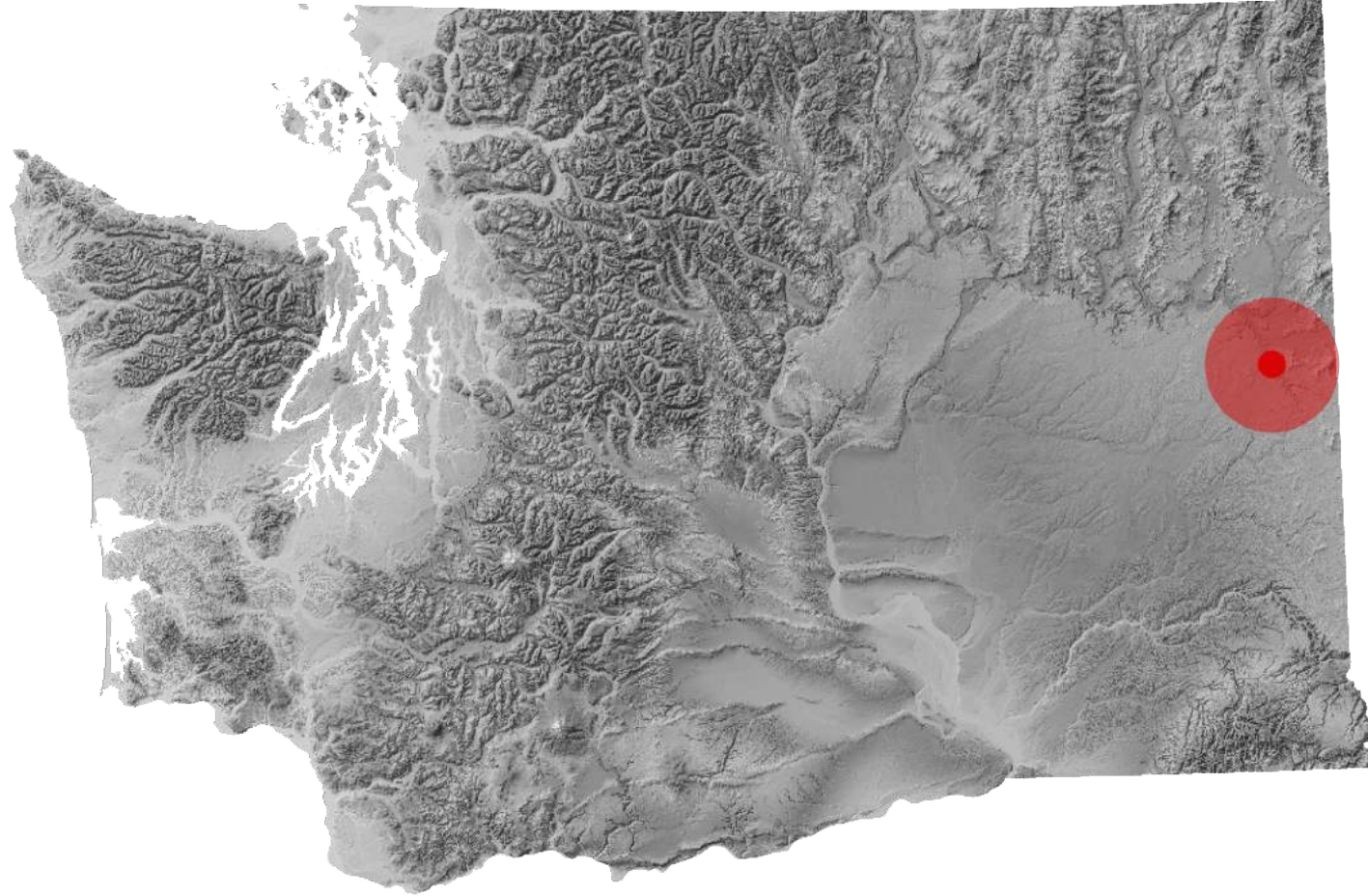


PROGRAMINVESTIGATION

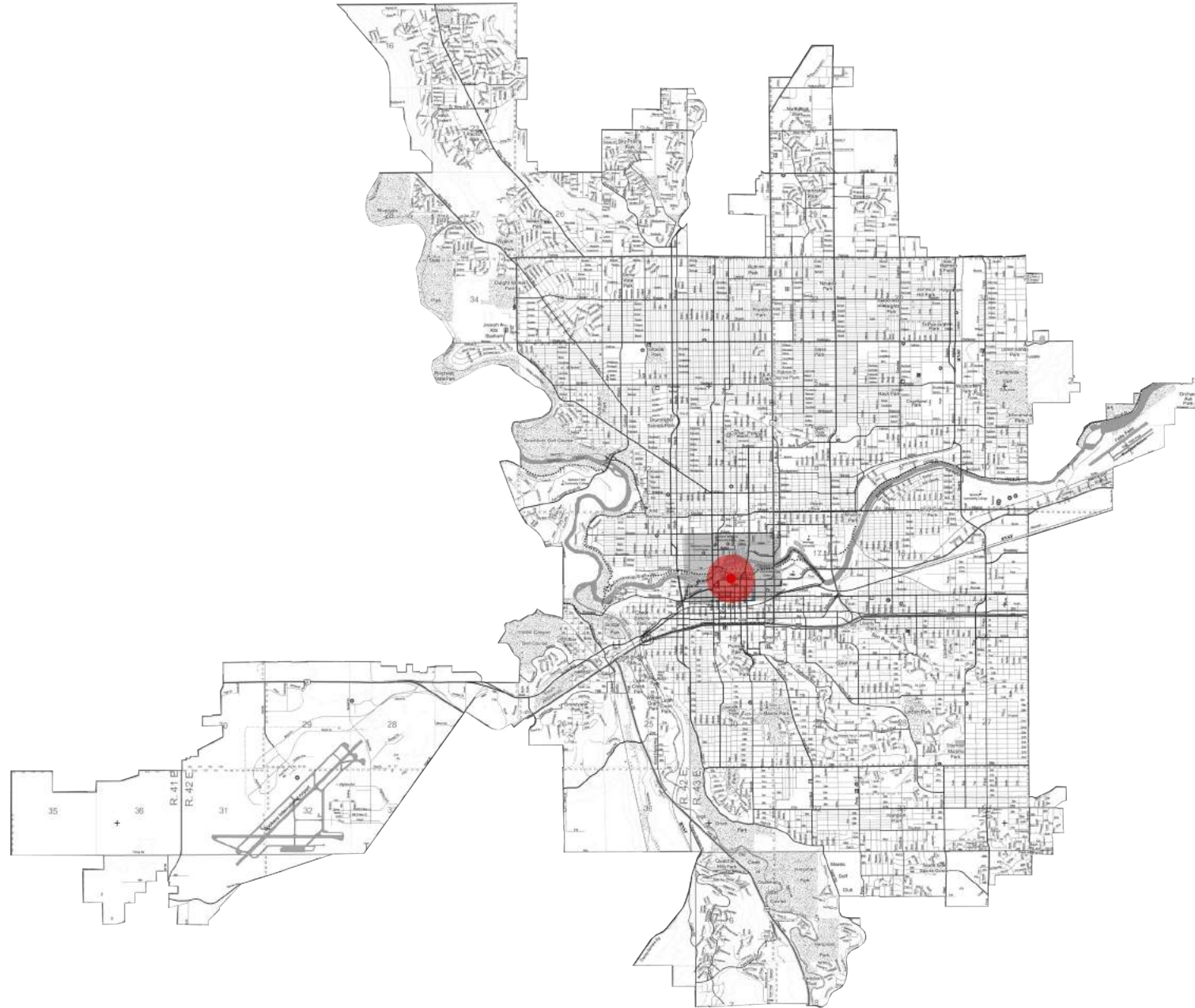
COMBINE WITH SITE INVESTIGATION



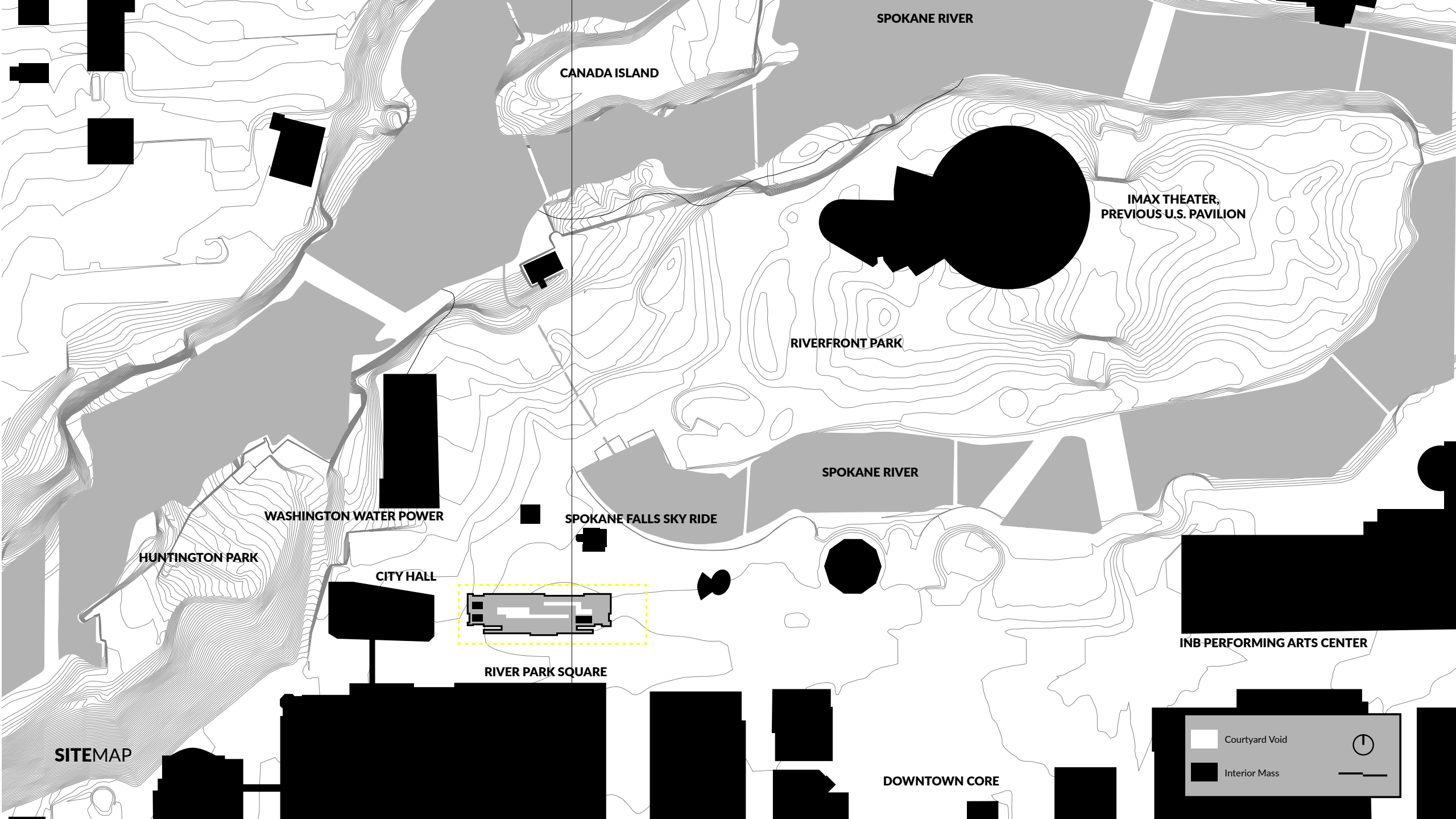
SITEMACRO



SITESTATE



SITECITY



SPOKANE RIVER

CANADA ISLAND

IMAX THEATER,
PREVIOUS U.S. PAVILION

RIVERFRONT PARK

SPOKANE RIVER

WASHINGTON WATER POWER

SPOKANE FALLS SKY RIDE

HUNTINGTON PARK



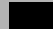
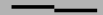
CITY HALL

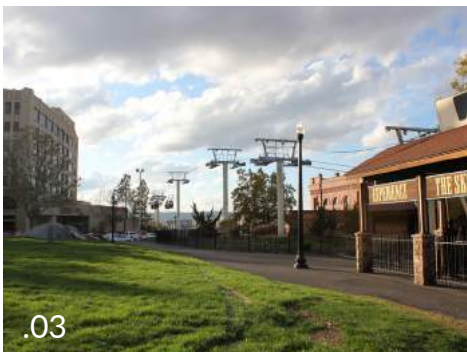
RIVER PARK SQUARE

INB PERFORMING ARTS CENTER

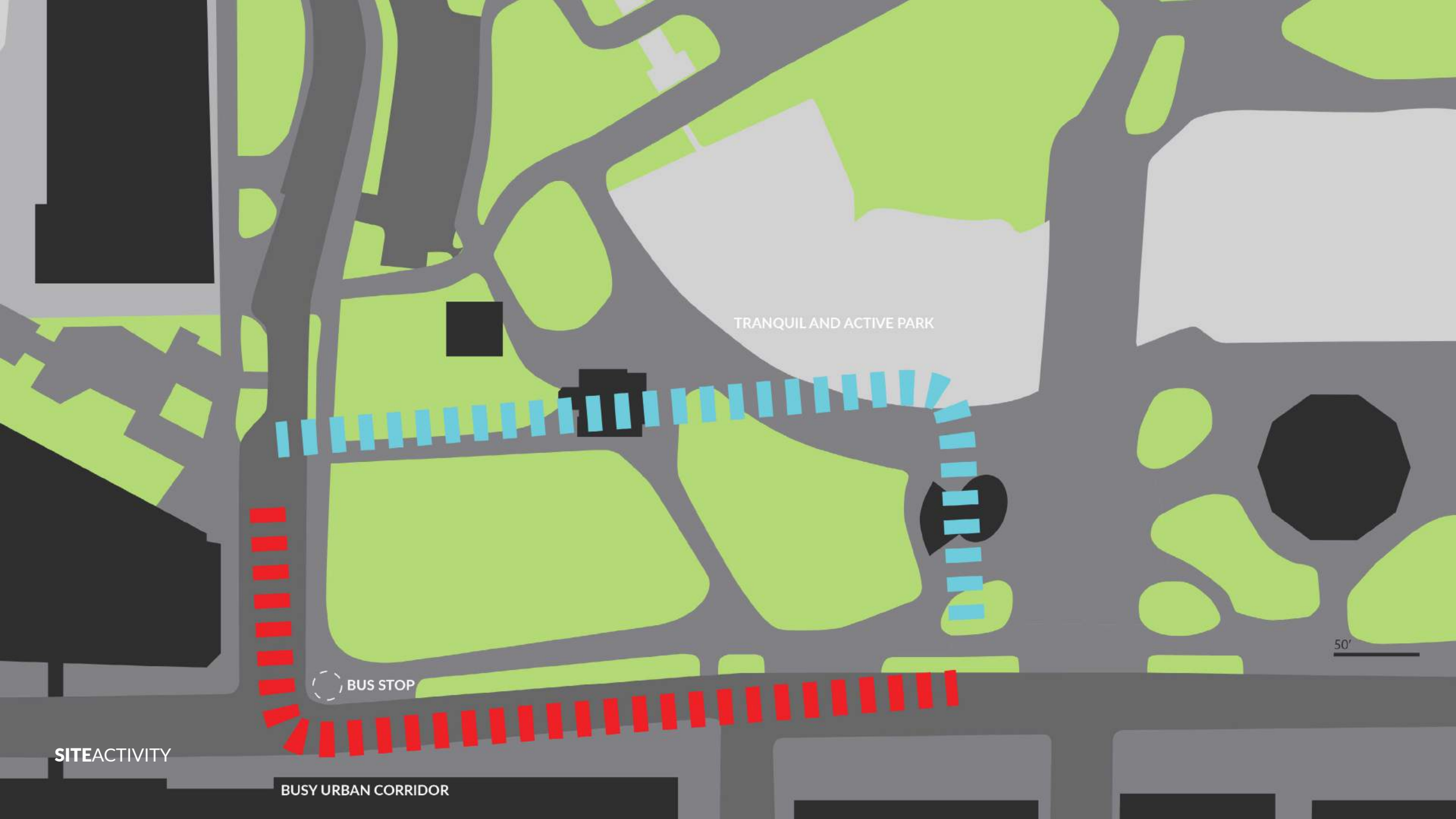
SITEMAP

DOWNTOWN CORE

	Courtyard Void	
	Interior Mass	



SITEVIEWS



TRANQUIL AND ACTIVE PARK

BUS STOP

50'

SITEACTIVITY

BUSY URBAN CORRIDOR

MOBIUS
SCIENCE
CENTER

CITY HALL

BLOOMSDAY
STATUES

50'





SPOKANE FALLS
SKY RIDE

CONNECTS TO
HUNTINGTON PARK

RIVERFRONT
PARK

50'



HIGH HEIGHT
FALLS VIEW

MID-HEIGHT
PARK VIEW

LOW HEIGHT
PARK VIEW

URBAN CORRIDOR
VIEW

50'

SYNTHESIS & ITERATION



RADIAL PROGRAM

RADIAL PROGRAM NESTED



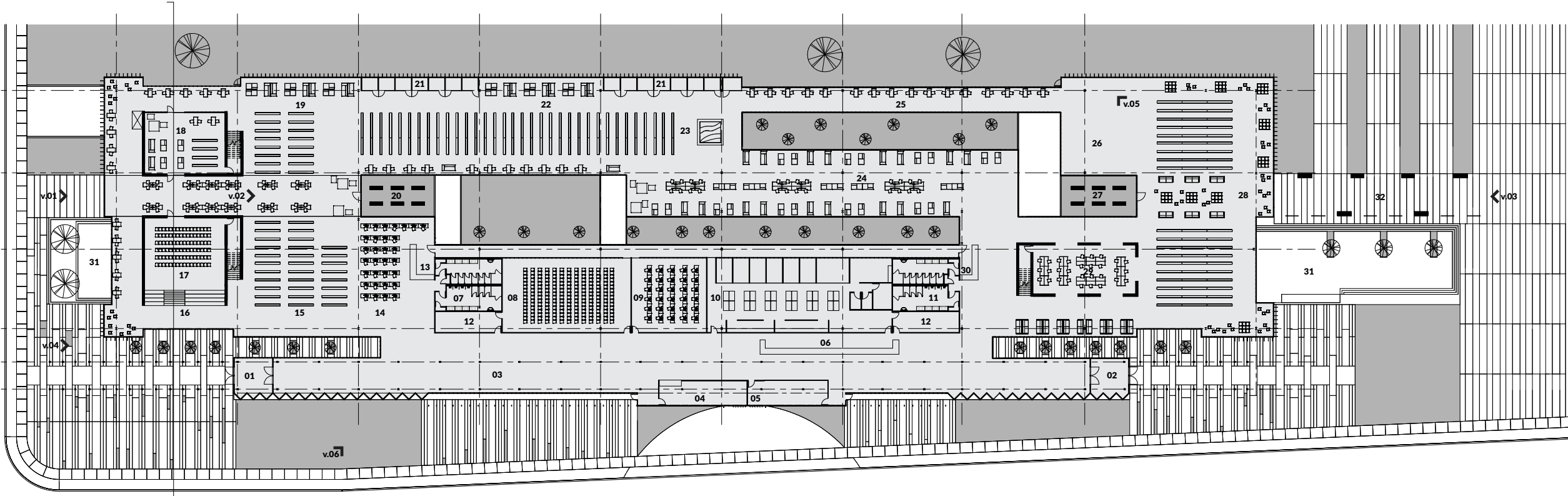


RADIAL PROGRAM SUBTRACTION

RADIAL PROGRAM LIFTED



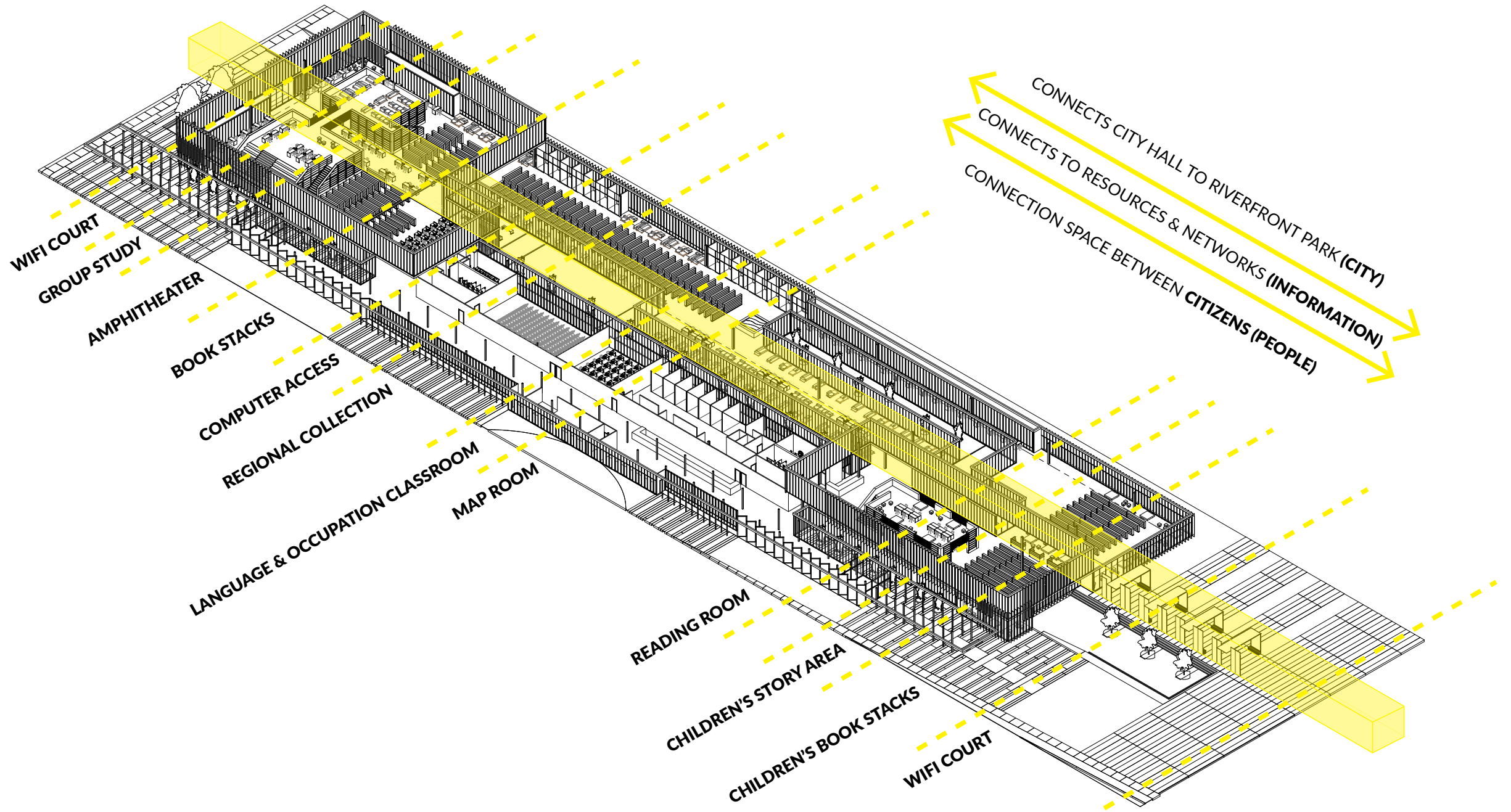
CURRENT ITERATION

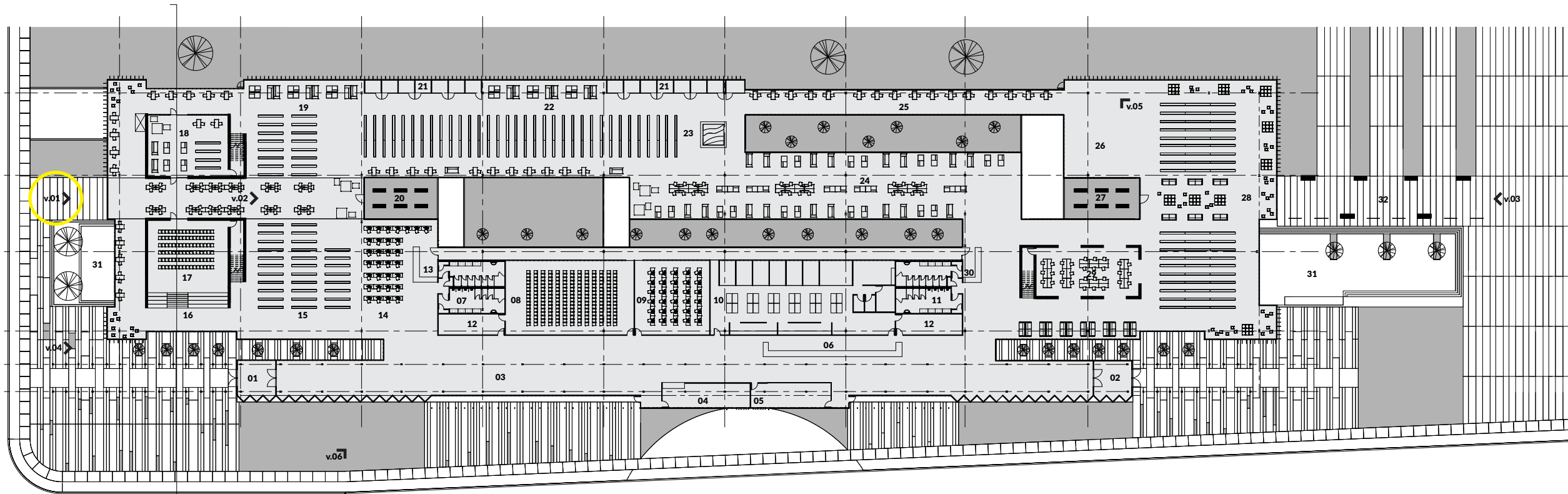


- | | | | | | | | |
|----------------------------|---|---|--------------------------------|--------------------------------|-------------------------------|--------------------------|---|
| 01 WEST ENTRY | 05 RESOURCE DROP-OFF/LOADING/STORAGE | 09 LANGUAGE & OCCUPATION CLASSROOM | 13 ADULT REFERENCE DESK | 17 THEATER/MEETING ROOM | 21 PRIVATE STUDY | 25 MAGAZINES | 29 CHILDREN ACTIVITY |
| 02 EAST ENTRY | 06 MAIN REFERENCE DESK | 10 ADMINISTRATION | 14 COMPUTER ACCESS | 18 YOUNG ADULT | 22 REGIONAL COLLECTION | 26 CHILDREN STORY | 30 CHILDREN REFERENCE DESK |
| 03 EXHIBITION SPACE | 07 RESTROOM WEST | 11 RESTROOM EAST | 15 NON-FICTION | 19 FICTION | 23 MAP ROOM | 27 COURTYARD EAST | 31 EXTERIOR WIFI COURT |
| 04 CAFE | 08 AUDITORIUM/MEETING ROOM | 12 MECHANICAL | 16 AMPHITHEATER | 20 COURTYARD WEST | 24 READING ROOM | 28 CHILDREN | 32 RIVERFRONT PARK ENTRY COLONNADE |

FLOOR PLAN 3/64" = 1'-0"





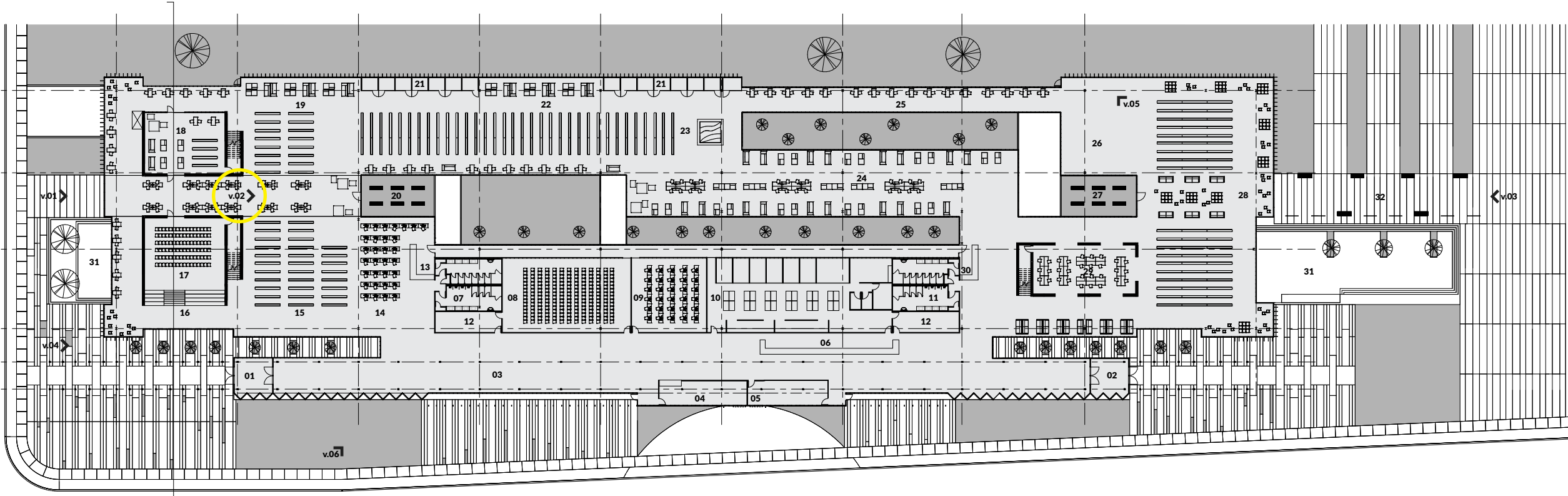


- | | | | | | | | |
|----------------------------|---|---|--------------------------------|--------------------------------|-------------------------------|--------------------------|---|
| 01 WEST ENTRY | 05 RESOURCE DROP-OFF/LOADING/STORAGE | 09 LANGUAGE & OCCUPATION CLASSROOM | 13 ADULT REFERENCE DESK | 17 THEATER/MEETING ROOM | 21 PRIVATE STUDY | 25 MAGAZINES | 29 CHILDREN ACTIVITY |
| 02 EAST ENTRY | 06 MAIN REFERENCE DESK | 10 ADMINISTRATION | 14 COMPUTER ACCESS | 18 YOUNG ADULT | 22 REGIONAL COLLECTION | 26 CHILDREN STORY | 30 CHILDREN REFERENCE DESK |
| 03 EXHIBITION SPACE | 07 RESTROOM WEST | 11 RESTROOM EAST | 15 NON-FICTION | 19 FICTION | 23 MAP ROOM | 27 COURTYARD EAST | 31 EXTERIOR WIFI COURT |
| 04 CAFE | 08 AUDITORIUM/MEETING ROOM | 12 MECHANICAL | 16 AMPHITHEATER | 20 COURTYARD WEST | 24 READING ROOM | 28 CHILDREN | 32 RIVERFRONT PARK ENTRY COLONNADE |

FLOOR PLAN 3/64" = 1'-0"



v.01

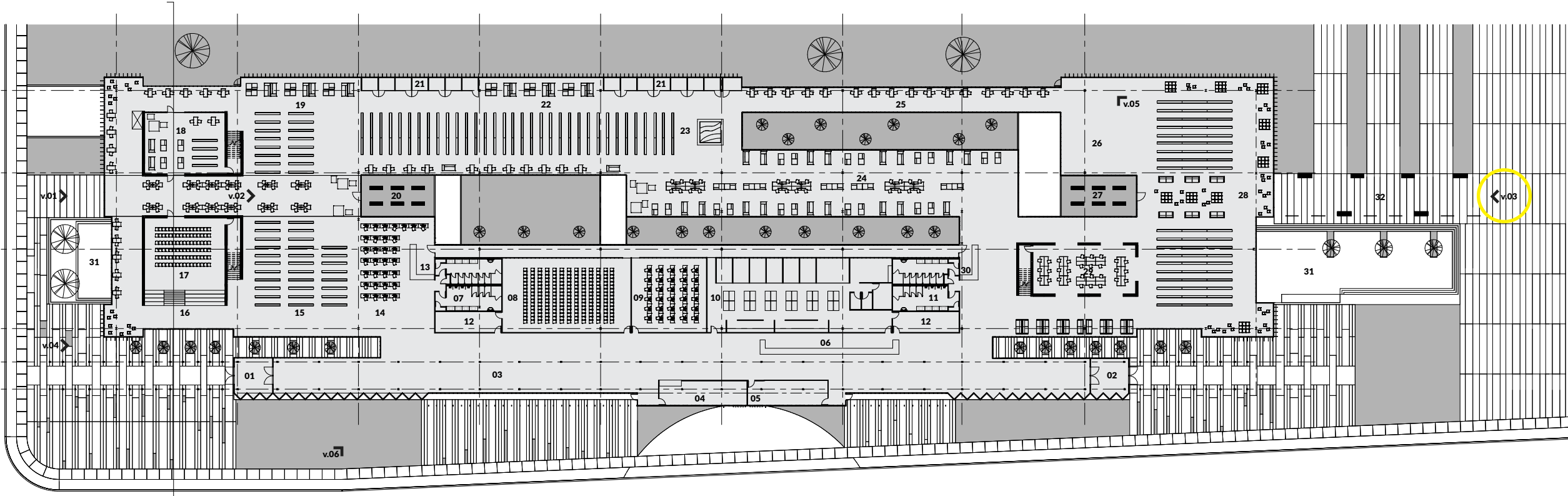


- | | | | | | | | |
|---------------------|--------------------------------------|------------------------------------|-------------------------|-------------------------|------------------------|-------------------|------------------------------------|
| 01 WEST ENTRY | 05 RESOURCE DROP-OFF/LOADING/STORAGE | 09 LANGUAGE & OCCUPATION CLASSROOM | 13 ADULT REFERENCE DESK | 17 THEATER/MEETING ROOM | 21 PRIVATE STUDY | 25 MAGAZINES | 29 CHILDREN ACTIVITY |
| 02 EAST ENTRY | 06 MAIN REFERENCE DESK | 10 ADMINISTRATION | 14 COMPUTER ACCESS | 18 YOUNG ADULT | 22 REGIONAL COLLECTION | 26 CHILDREN STORY | 30 CHILDREN REFERENCE DESK |
| 03 EXHIBITION SPACE | 07 RESTROOM WEST | 11 RESTROOM EAST | 15 NON-FICTION | 19 FICTION | 23 MAP ROOM | 27 COURTYARD EAST | 31 EXTERIOR WIFI COURT |
| 04 CAFE | 08 AUDITORIUM/MEETING ROOM | 12 MECHANICAL | 16 AMPHITHEATER | 20 COURTYARD WEST | 24 READING ROOM | 28 CHILDREN | 32 RIVERFRONT PARK ENTRY COLONNADE |

FLOOR PLAN 3/64" = 1'-0"



v.02



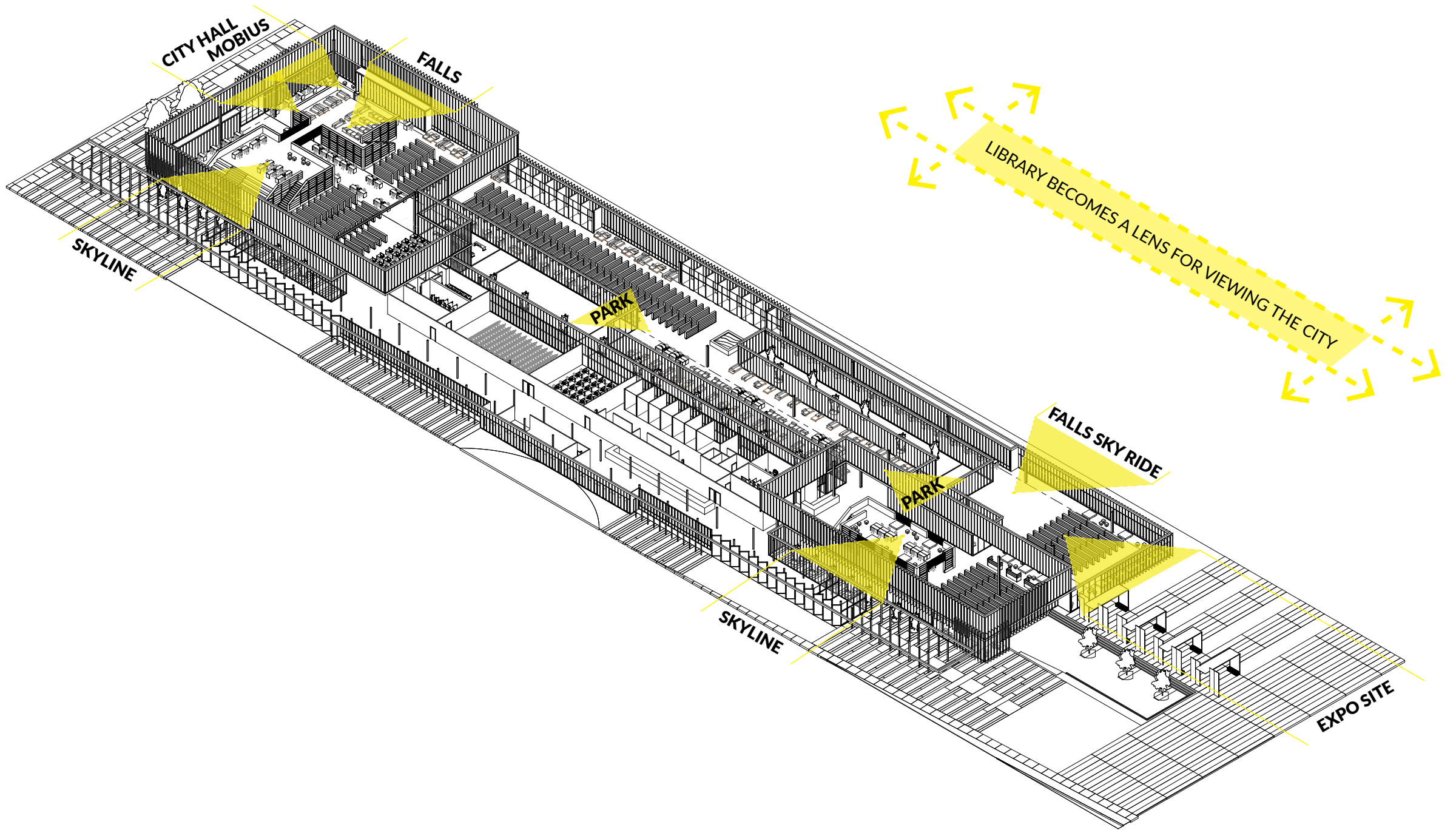
- | | | | | | | | |
|----------------------------|---|---|--------------------------------|--------------------------------|-------------------------------|--------------------------|---|
| 01 WEST ENTRY | 05 RESOURCE DROP-OFF/LOADING/STORAGE | 09 LANGUAGE & OCCUPATION CLASSROOM | 13 ADULT REFERENCE DESK | 17 THEATER/MEETING ROOM | 21 PRIVATE STUDY | 25 MAGAZINES | 29 CHILDREN ACTIVITY |
| 02 EAST ENTRY | 06 MAIN REFERENCE DESK | 10 ADMINISTRATION | 14 COMPUTER ACCESS | 18 YOUNG ADULT | 22 REGIONAL COLLECTION | 26 CHILDREN STORY | 30 CHILDREN REFERENCE DESK |
| 03 EXHIBITION SPACE | 07 RESTROOM WEST | 11 RESTROOM EAST | 15 NON-FICTION | 19 FICTION | 23 MAP ROOM | 27 COURTYARD EAST | 31 EXTERIOR WIFI COURT |
| 04 CAFE | 08 AUDITORIUM/MEETING ROOM | 12 MECHANICAL | 16 AMPHITHEATER | 20 COURTYARD WEST | 24 READING ROOM | 28 CHILDREN | 32 RIVERFRONT PARK ENTRY COLONNADE |

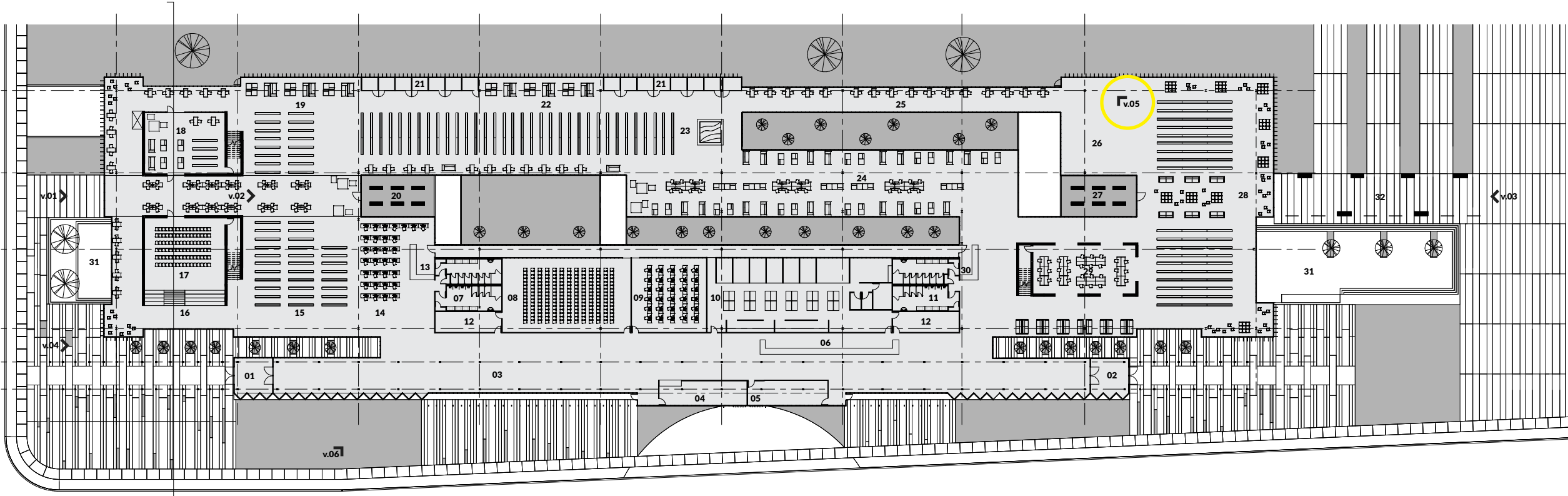
FLOOR PLAN 3/64" = 1'-0"



v.03







- | | | | | | | | |
|---------------------|--------------------------------------|------------------------------------|-------------------------|-------------------------|------------------------|-------------------|------------------------------------|
| 01 WEST ENTRY | 05 RESOURCE DROP-OFF/LOADING/STORAGE | 09 LANGUAGE & OCCUPATION CLASSROOM | 13 ADULT REFERENCE DESK | 17 THEATER/MEETING ROOM | 21 PRIVATE STUDY | 25 MAGAZINES | 29 CHILDREN ACTIVITY |
| 02 EAST ENTRY | 06 MAIN REFERENCE DESK | 10 ADMINISTRATION | 14 COMPUTER ACCESS | 18 YOUNG ADULT | 22 REGIONAL COLLECTION | 26 CHILDREN STORY | 30 CHILDREN REFERENCE DESK |
| 03 EXHIBITION SPACE | 07 RESTROOM WEST | 11 RESTROOM EAST | 15 NON-FICTION | 19 FICTION | 23 MAP ROOM | 27 COURTYARD EAST | 31 EXTERIOR WIFI COURT |
| 04 CAFE | 08 AUDITORIUM/MEETING ROOM | 12 MECHANICAL | 16 AMPHITHEATER | 20 COURTYARD WEST | 24 READING ROOM | 28 CHILDREN | 32 RIVERFRONT PARK ENTRY COLONNADE |

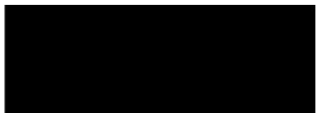
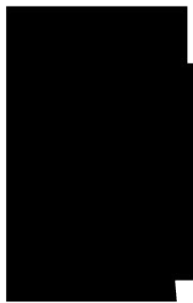
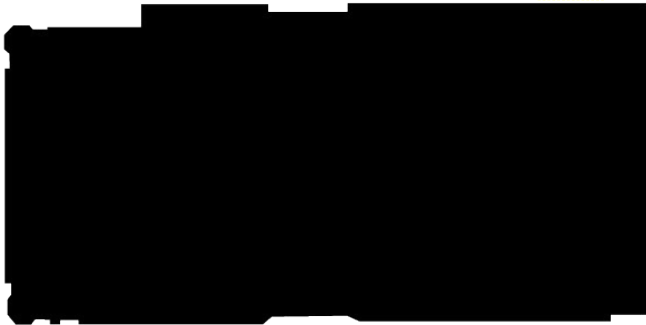
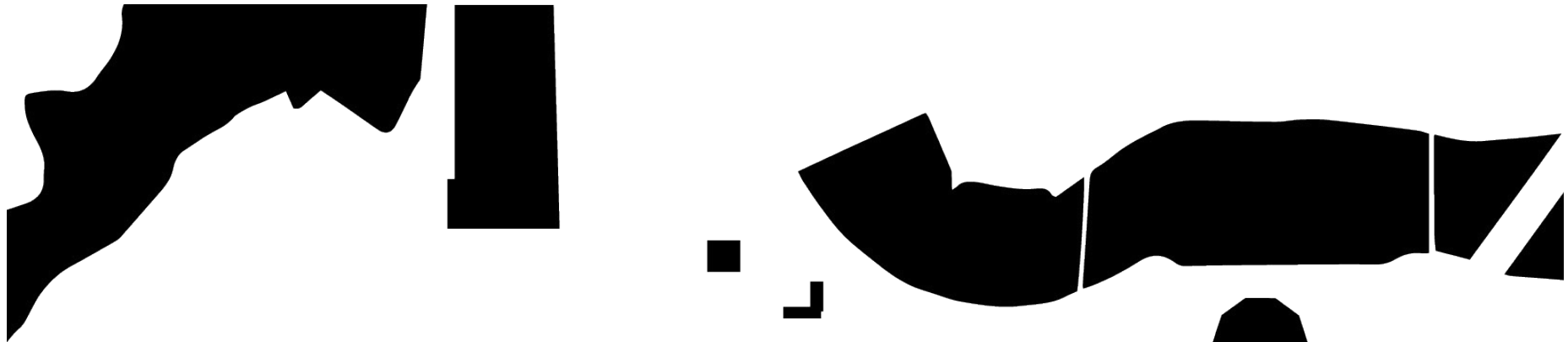
FLOOR PLAN 3/64" = 1'-0"

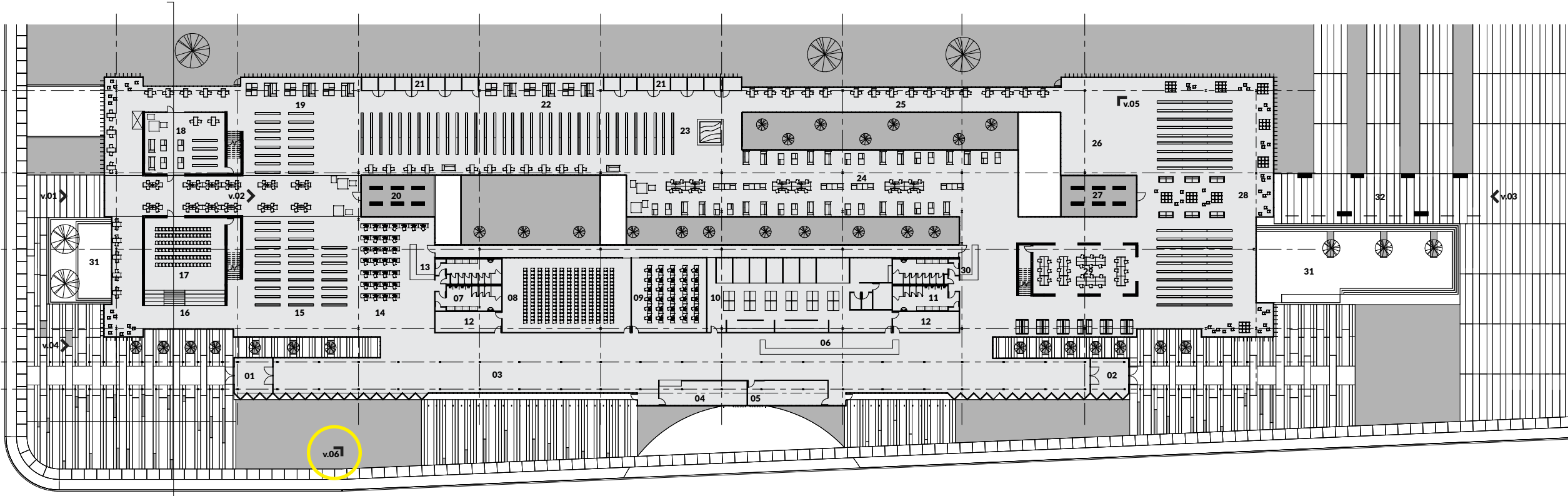


v.05



B SECTION $\frac{3}{32}'' = 1'-0''$





- | | | | | | | | |
|---------------------|--------------------------------------|------------------------------------|-------------------------|-------------------------|------------------------|-------------------|------------------------------------|
| 01 WEST ENTRY | 05 RESOURCE DROP-OFF/LOADING/STORAGE | 09 LANGUAGE & OCCUPATION CLASSROOM | 13 ADULT REFERENCE DESK | 17 THEATER/MEETING ROOM | 21 PRIVATE STUDY | 25 MAGAZINES | 29 CHILDREN ACTIVITY |
| 02 EAST ENTRY | 06 MAIN REFERENCE DESK | 10 ADMINISTRATION | 14 COMPUTER ACCESS | 18 YOUNG ADULT | 22 REGIONAL COLLECTION | 26 CHILDREN STORY | 30 CHILDREN REFERENCE DESK |
| 03 EXHIBITION SPACE | 07 RESTROOM WEST | 11 RESTROOM EAST | 15 NON-FICTION | 19 FICTION | 23 MAP ROOM | 27 COURTYARD EAST | 31 EXTERIOR WIFI COURT |
| 04 CAFE | 08 AUDITORIUM/MEETING ROOM | 12 MECHANICAL | 16 AMPHITHEATER | 20 COURTYARD WEST | 24 READING ROOM | 28 CHILDREN | 32 RIVERFRONT PARK ENTRY COLONNADE |

FLOOR PLAN 3/64" = 1'-0"



v.06

