



A Threshold for the Homeless:

Between the Smooth and the Striated

7 Billion

1.6 Billion

100 Million

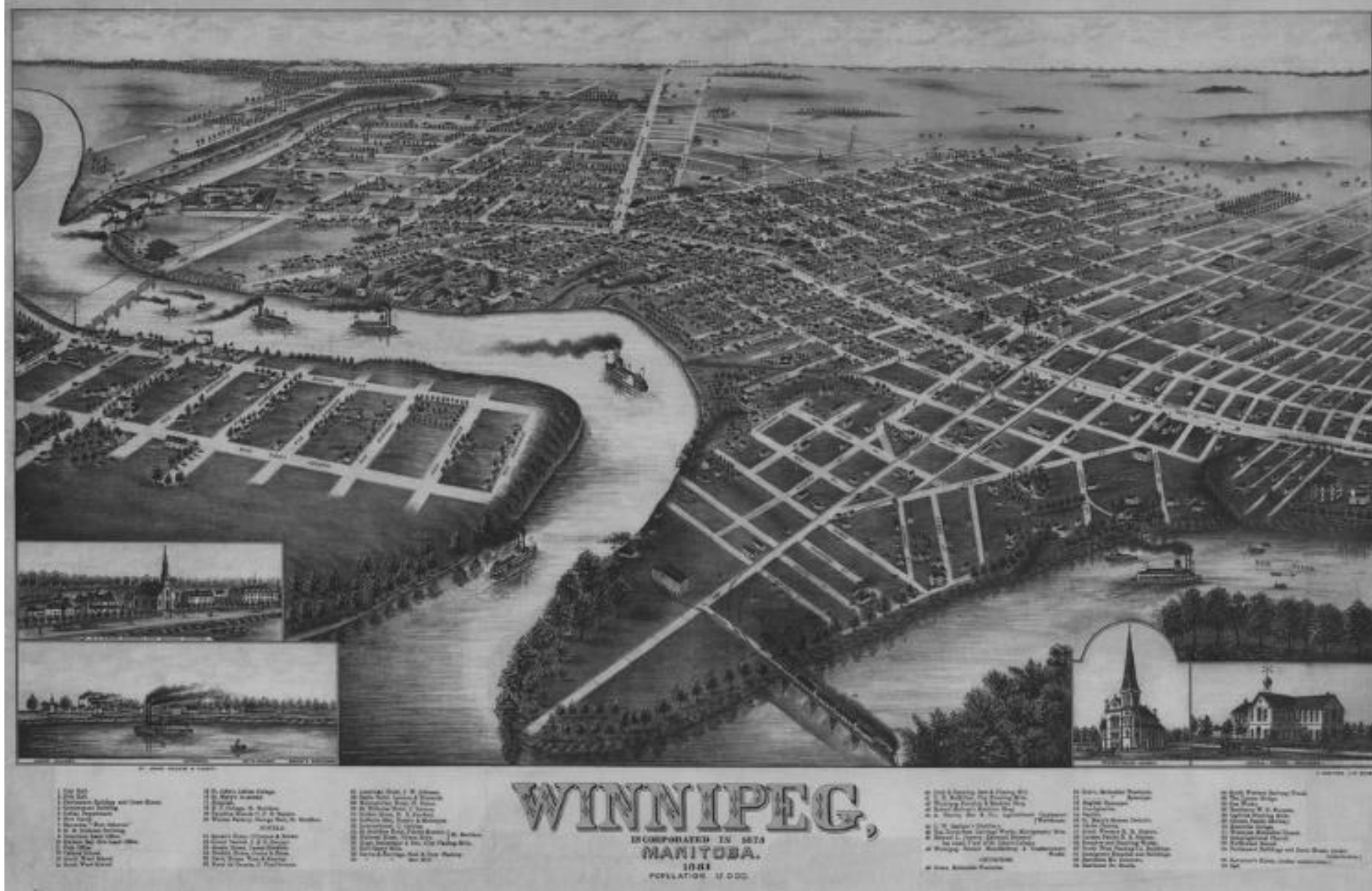
200,000

135,000

7,600

1,915

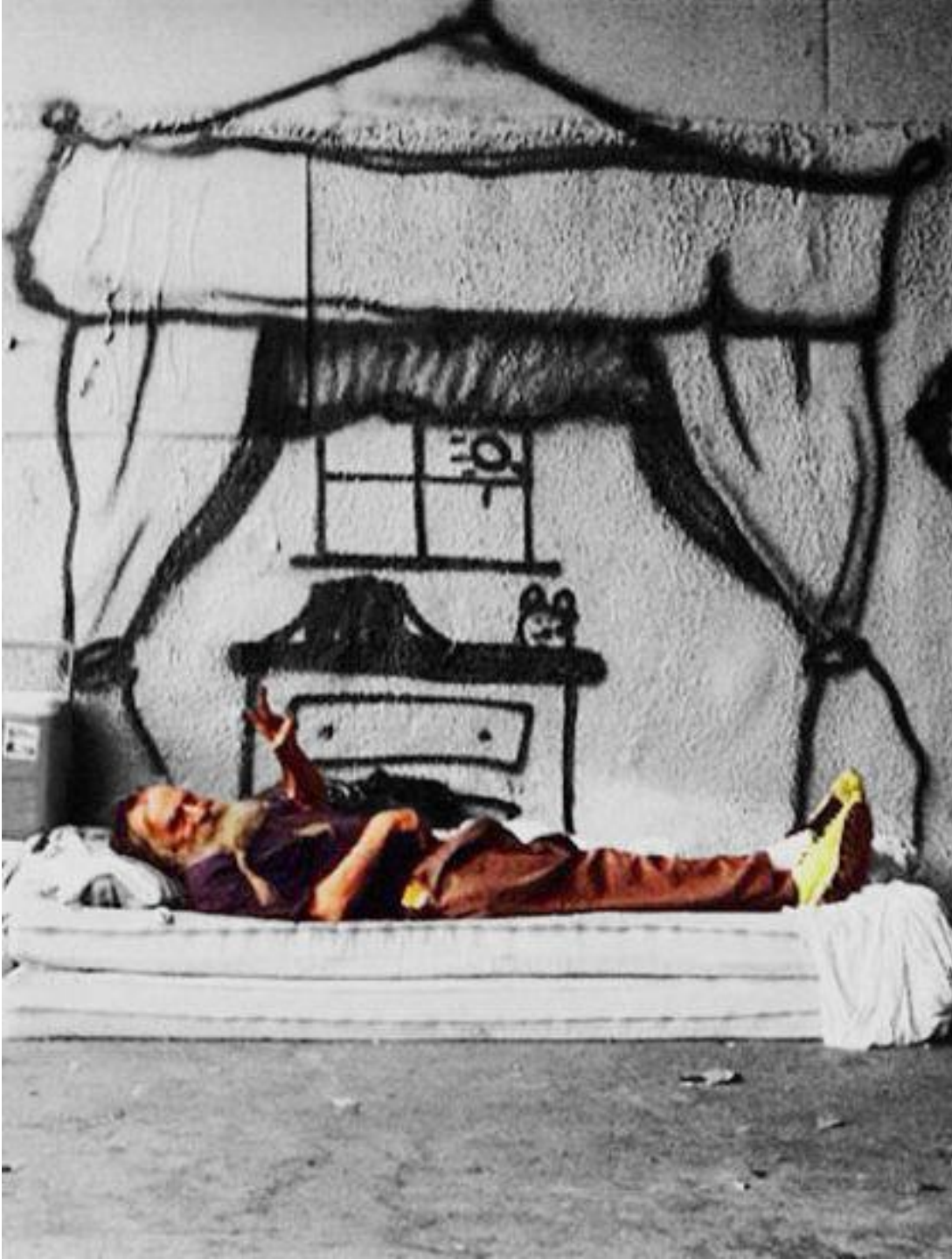
350



magnitude



stereotype



sense of being



purposeful dwelling

point of view
Homeless [
someone with
without having
no housing
for what is

“The emphasis fell on trying to measure how far their efforts fell short.”

-Maurice Merleau-Ponty

stigma



the typical



“The modest gesture of forming these beads is a reminder of how precious and universal the bond is between humans and the earth.”

-Rebecca Belmore

integration



perception



Nostalghia

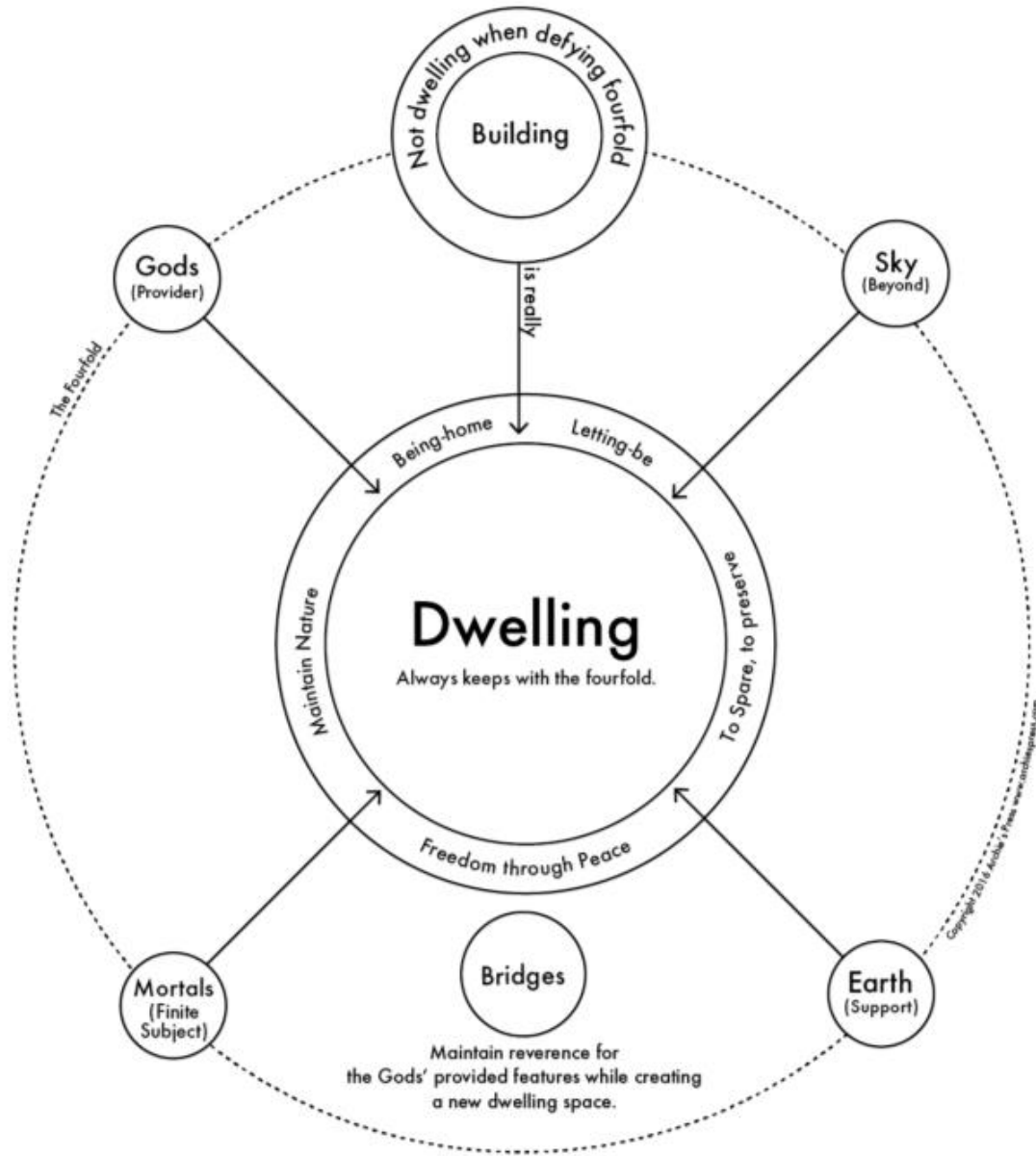


“Initiate [a person’s] own essential being”

-Martin Heidegger

to dwell

"Building, Dwelling, Thinking" by Martin Heidegger



the individual



nomadism



choice



aboriginals



Winnipeg



three levels

Architecture
and
the Crisis of
Modern
Science

Alberto
Pérez-Gómez



“If the law that stipulates the necessary imitation
of antiquity were true, we would not need to
search for new means to acquire the knowledge
that we are lacking.”

-Claude Perrault

antiquity



“Architectural space frames, halts, strengthens,
and focuses our thoughts, and prevents them
from getting lost.”

-Juhani Pallasmaa

Libeskind's Jewish Museum

experience



“In the *Trinity*, one is drawn into the spiritual space of the painting, rather than its material construct, invited to dwell on the eternal rather than the earthly and the temporal.”

-Anne Bordeleau

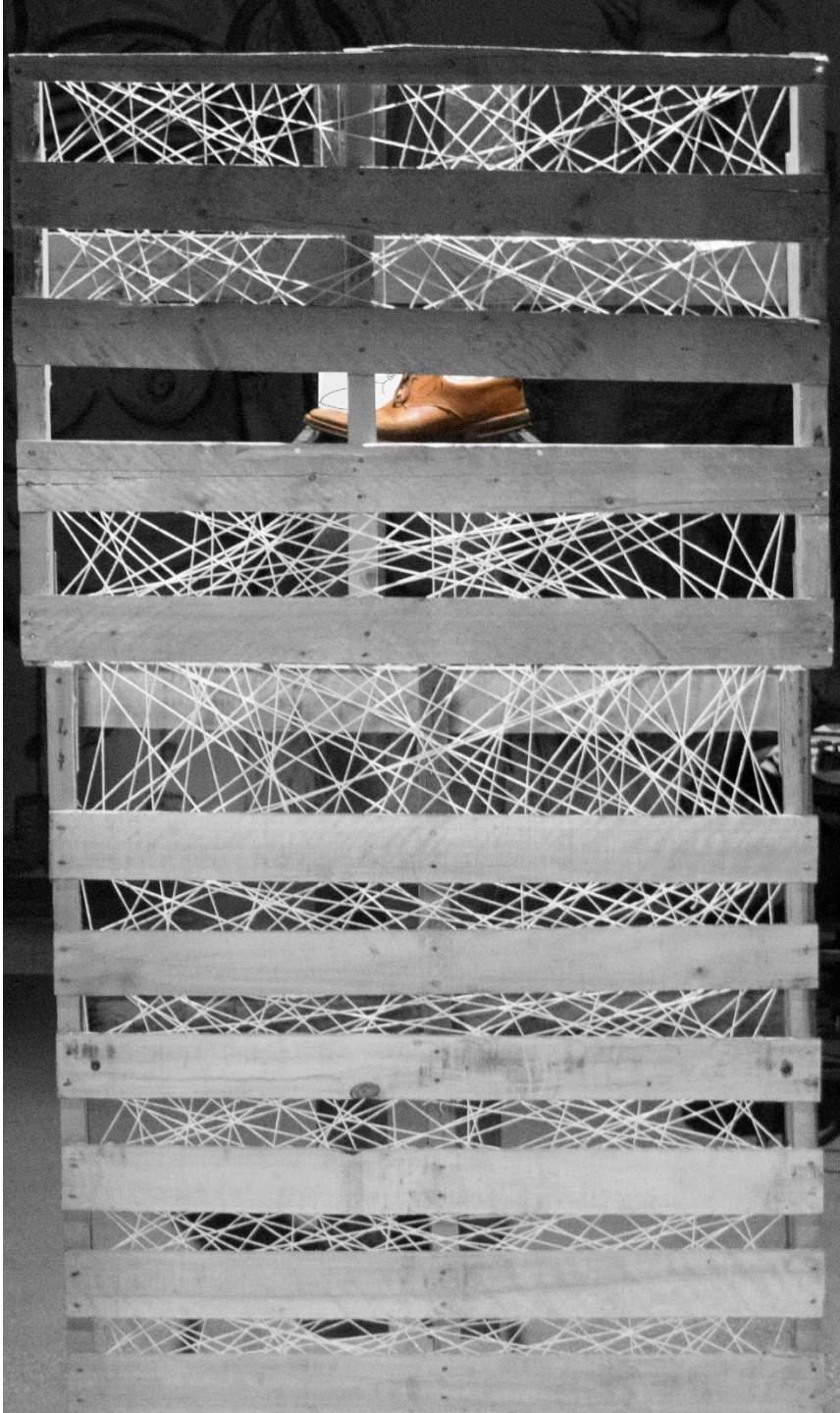
Trinity



The Smooth and the Striated



smooth space



the artefact



framework



“Every new work of architecture intervenes in a specific historical situation. It is essential to the quality of the intervention that the new building should embrace qualities which can enter into a meaningful dialogue with the existing situation. For if the intervention is to find its place, it must make us see what already exists in a new light.”

-Anne Bordeleau



the site



the site



the museum



The United Way

importance



threshold



decisions



diversity



Libeskind's Jewish Museum

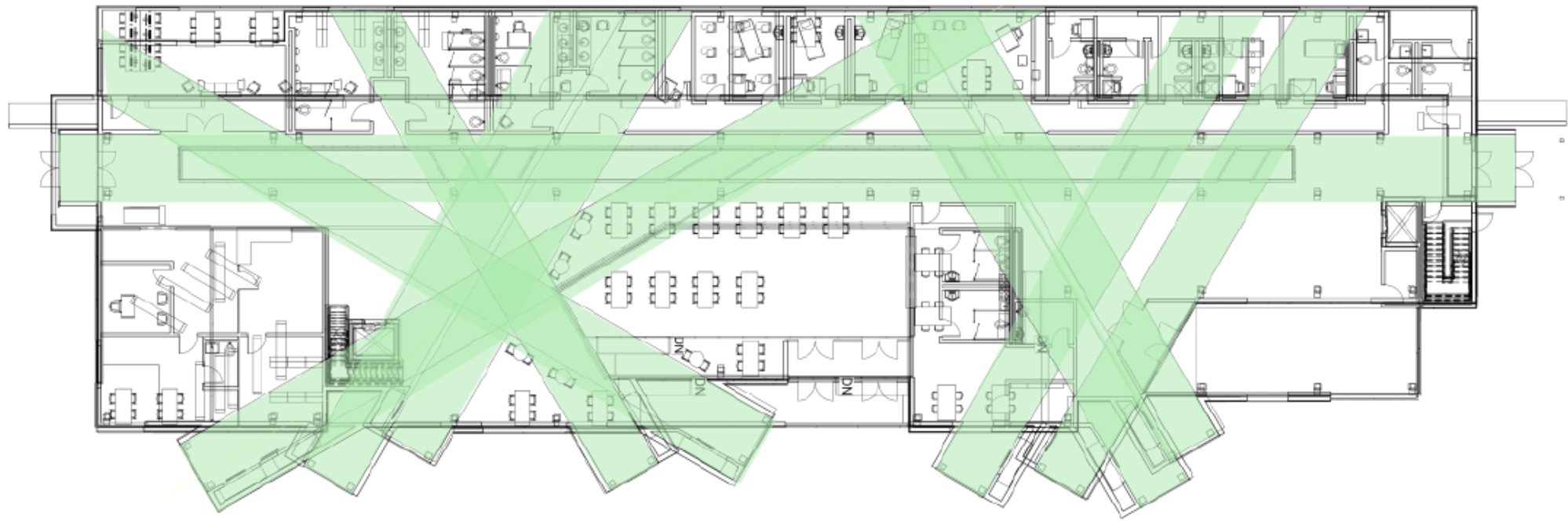
voids



materials



in-between

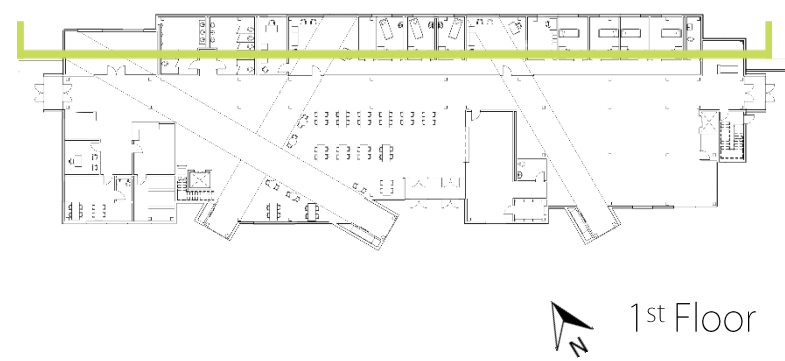
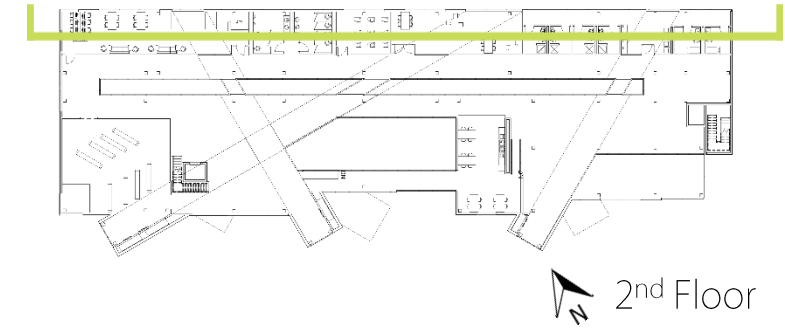
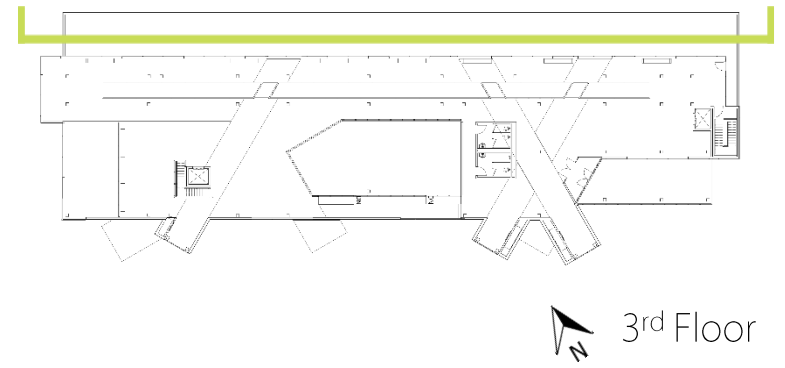


openness



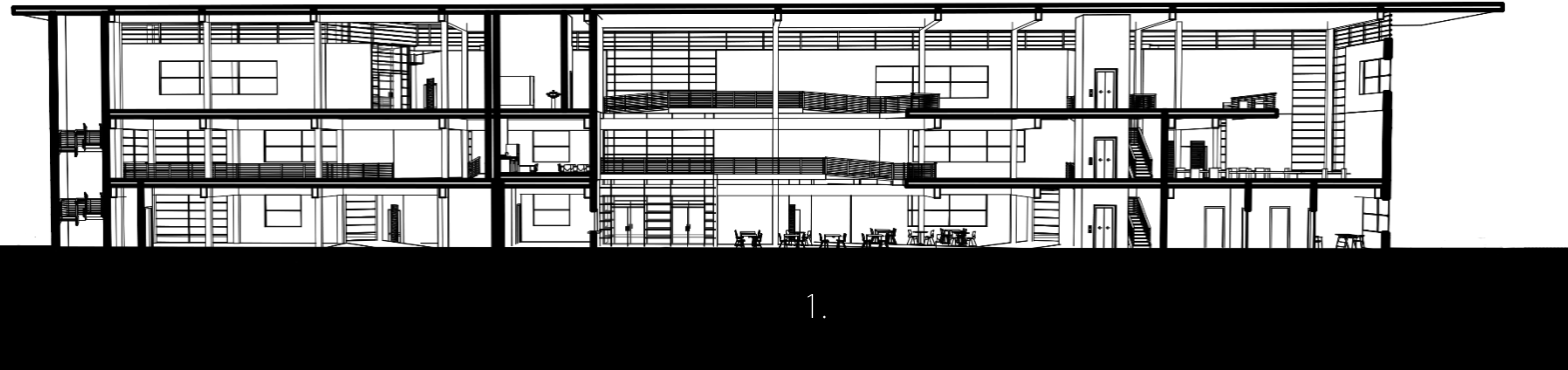
teetering

1. Donation shop
2. Counseling office
3. Clinic
4. Detox center
5. Library
6. Classroom
7. Child center
8. Hygiene center

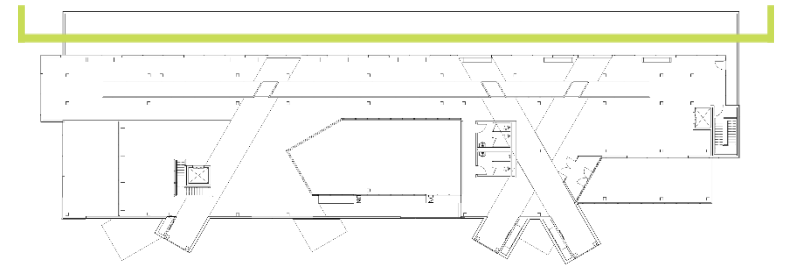


the striated

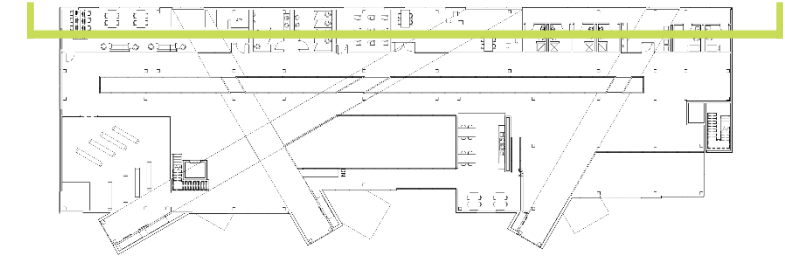
- 1. Dining center
- 2. Chapel



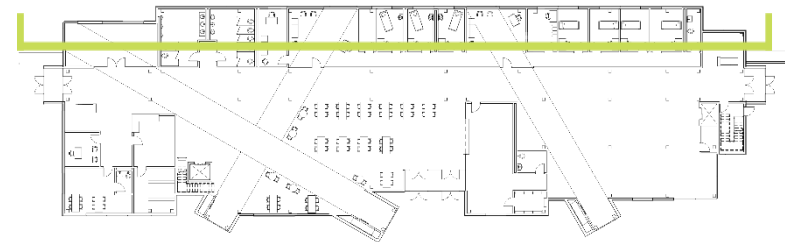
2.



3rd Floor

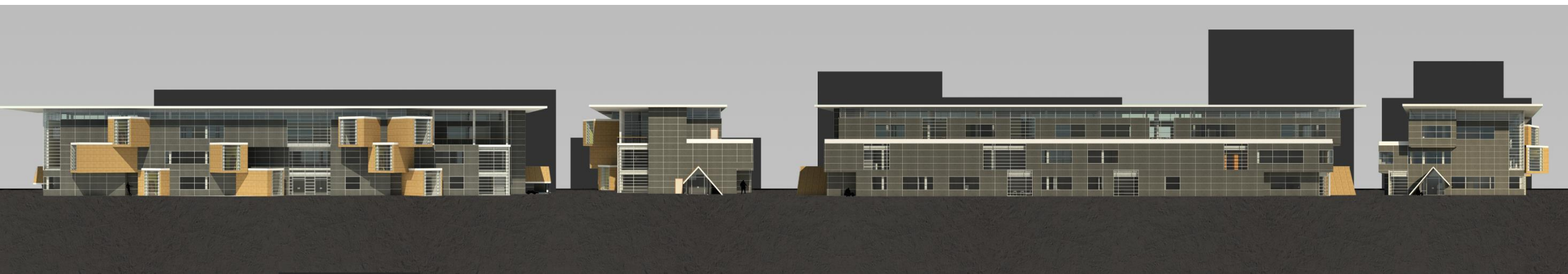


2nd Floor



1st Floor

the smooth



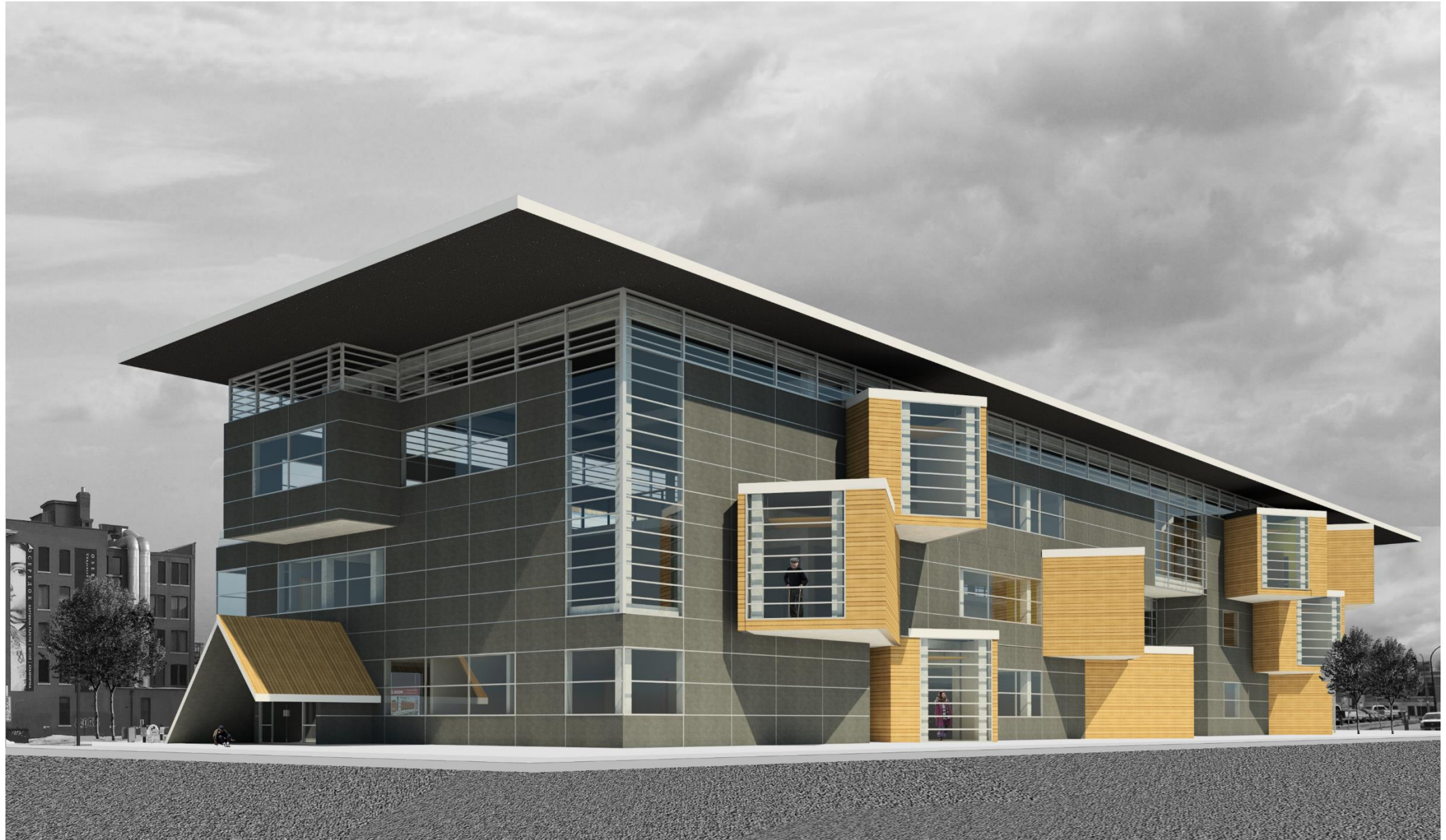
creation



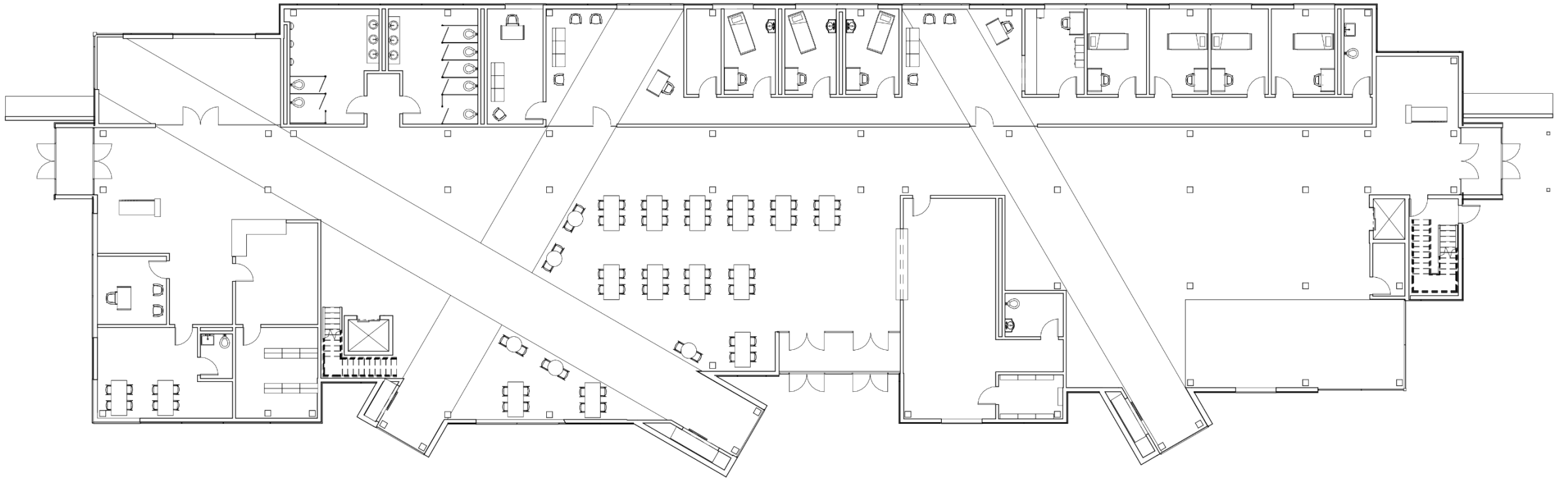
the chapel



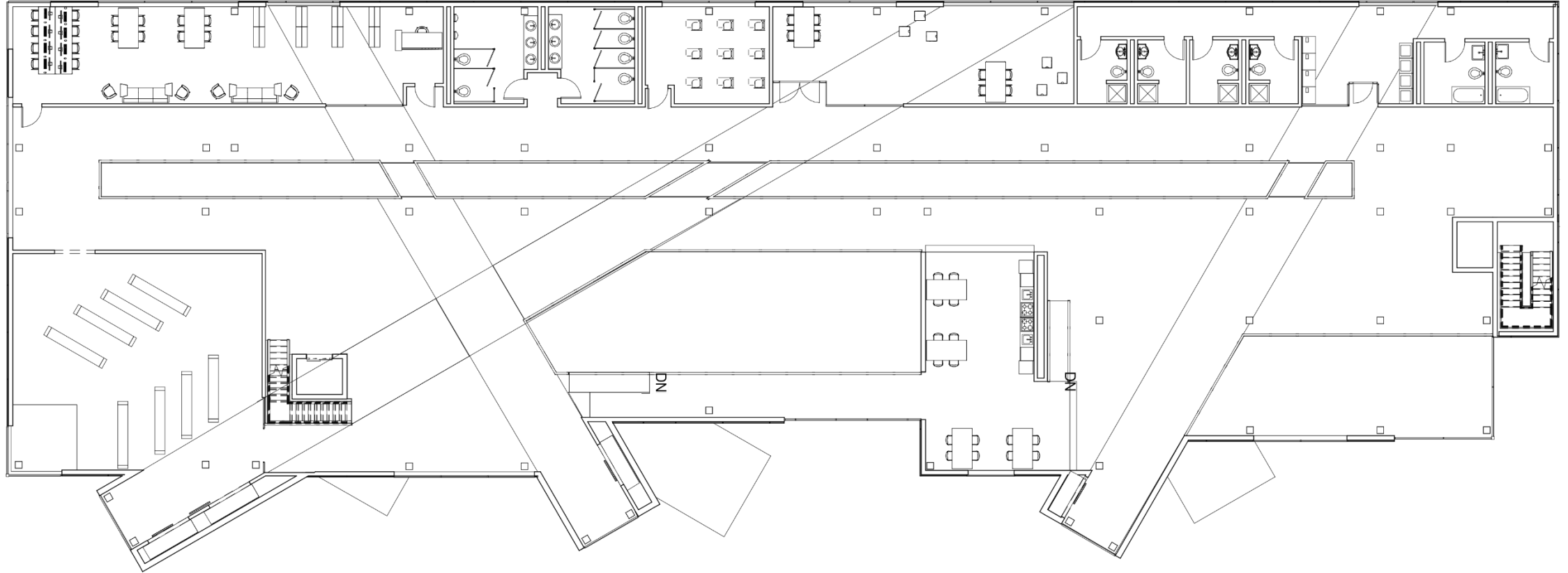
personal spaces



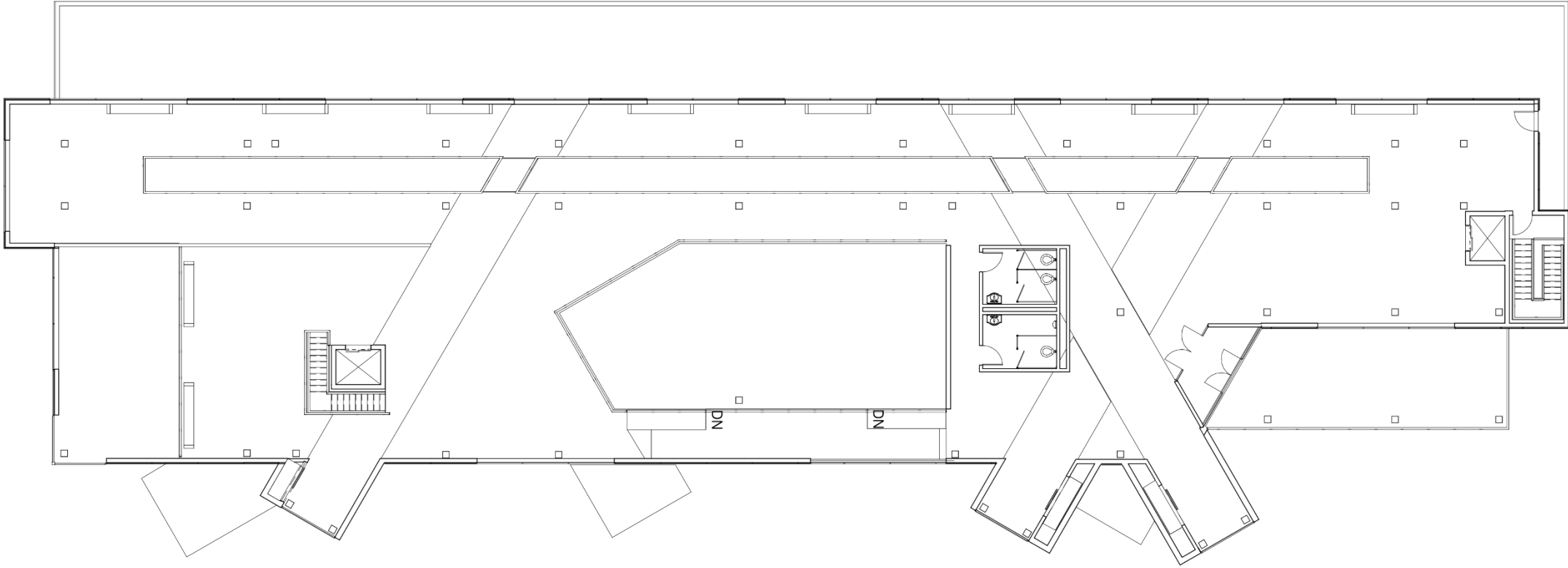
thank you



first floor



second floor



third floor