

# HIROSHIMA, JAPAN

## CENTRAL PARK



## ATOMIC BOMB VICTIMS MEMORIAL

POINTING TO BOTH THE ATOMIC BOMB VICTIMS MEMORIAL AND THE  
LOCATION OF THE BOMB DROPPING THAT ENDED WWII, YOUR BODY IS  
THE NEXT DIMENSION OF THIS ARCHITECTURE - TIME - MOVING INTO  
HISTORY AND BACK TO THE PRESENT

SCALE : 1" = 100'



## ATOMIC BOMB DOME

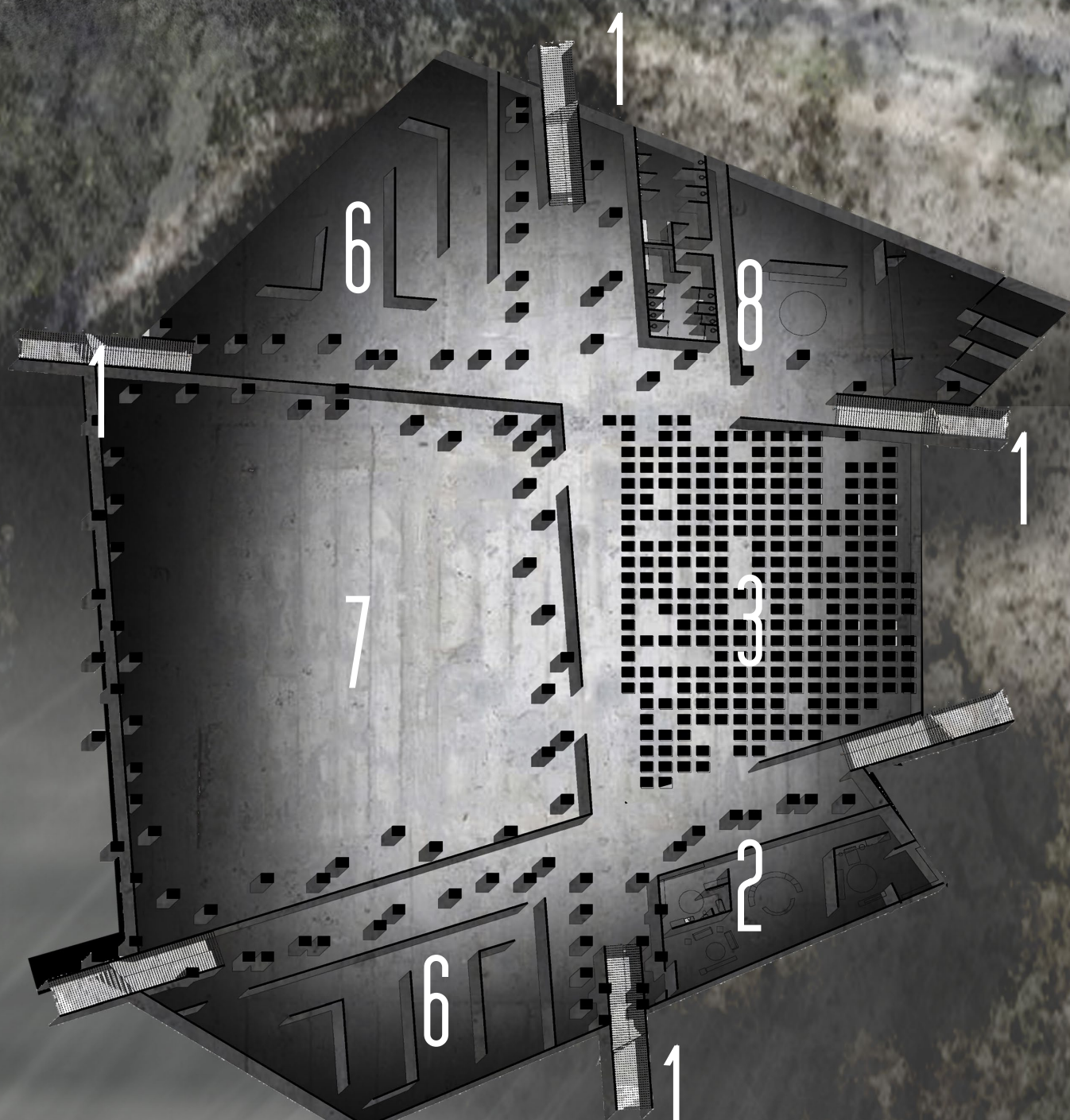
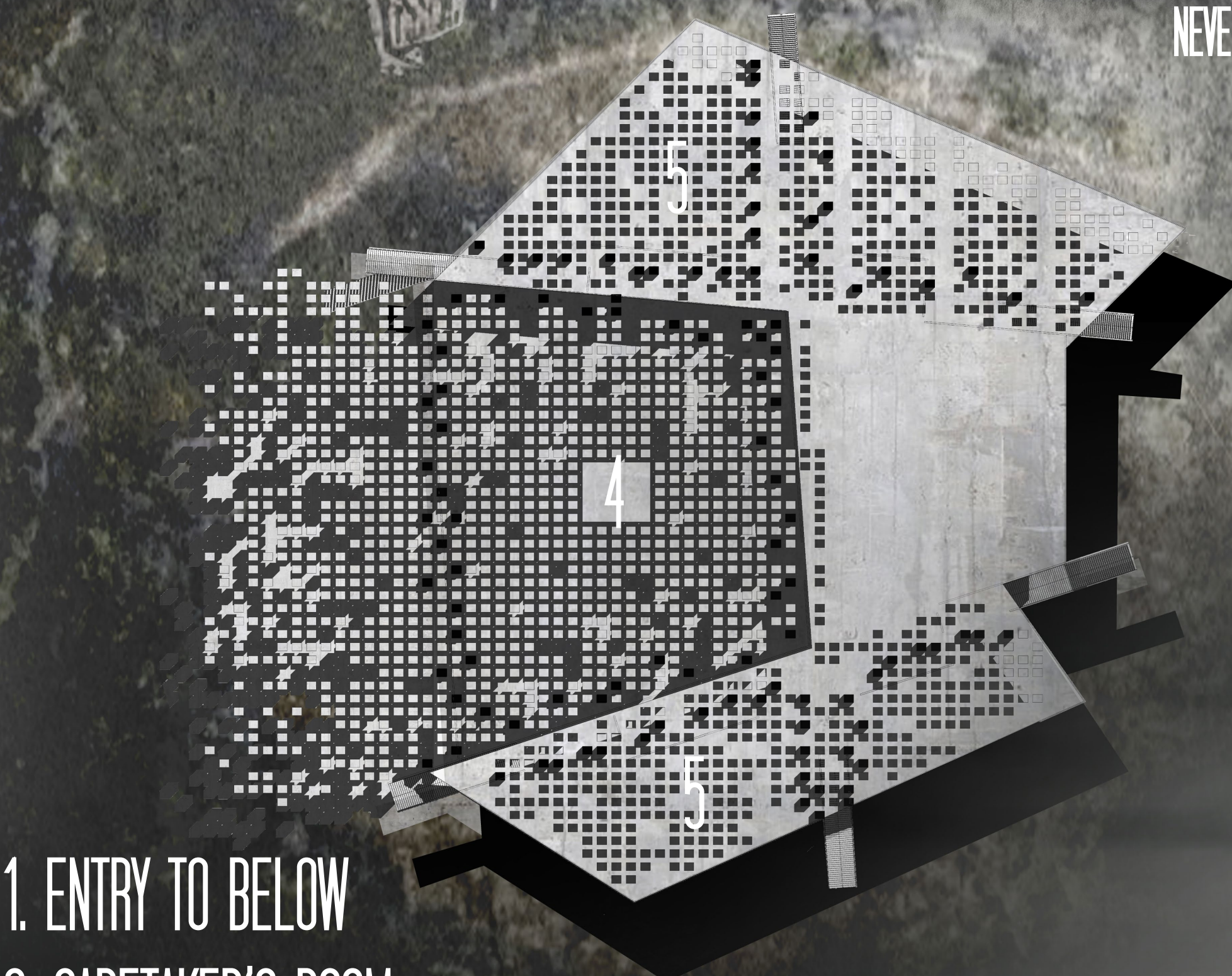
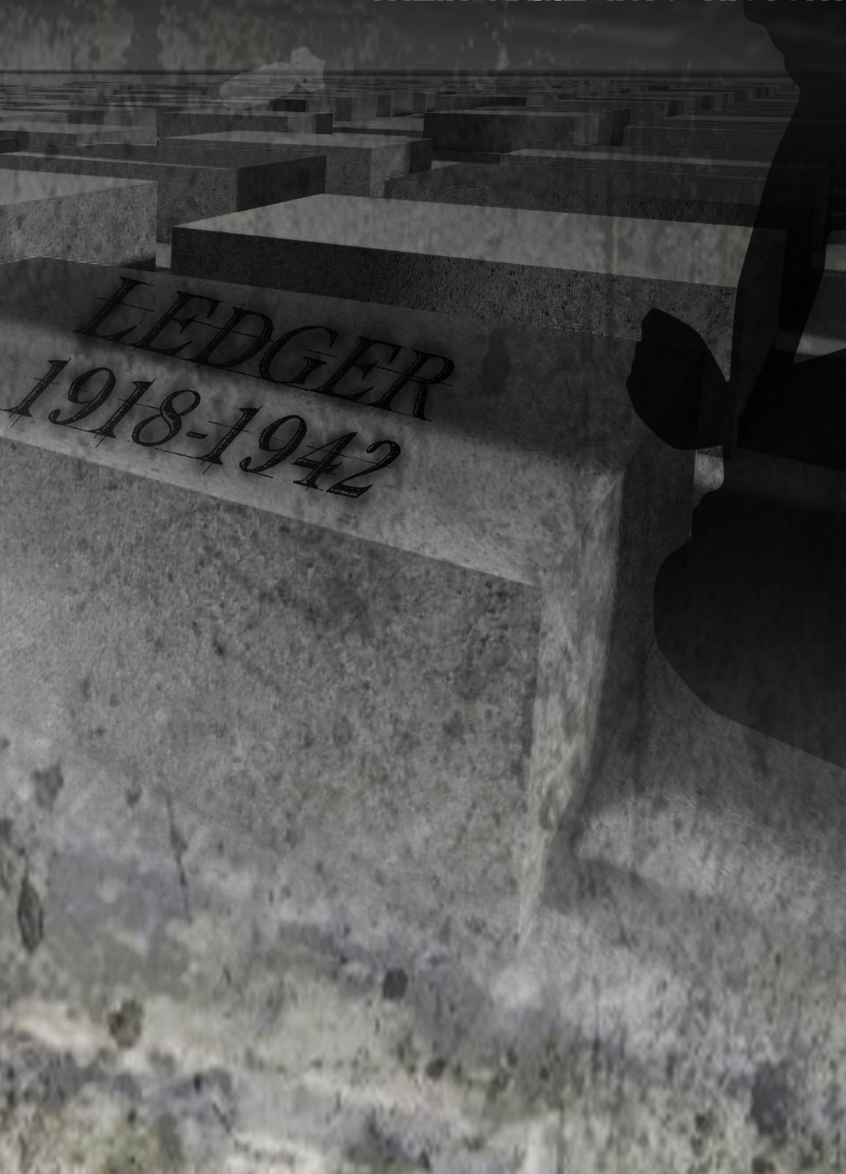
THREE MUSEUMS IN BERLIN, HIROSHIMA, AND CHICAGO, ARE ALL TIED TOGETHER THROUGH THE STORY OF THE  
SECOND WORLD WAR.

## ZERO HOUR THE HOUR ALL STOOD STILL



CITY BELOW  
THE CITY OF STONE AND ERASURES,  
NEVER TO TOWER ABOVE GROUND

## ETCHINGS OF THE FORGOTTEN BLESS THOSE WHO DIED, CARVE THEIR NAME INTO HISTORY



1. ENTRY TO BELOW
2. CARETAKER'S ROOM
3. THE CITY BELOW
4. ETCHINGS OF THE FORGOTTEN
5. GARDEN OF LIFE
6. ARTIFACT/ART STORAGE
7. WAR EXHIBIT
8. RECEPTION

SCALE : 1" = 50'



EACH CARETAKER MAINTAINS THE MUSEUM,  
SENT BY THE CITY TO PROTECT ITS HISTORY

# TRACE

/treys/ noun

a surviving mark, sign, or evidence of the former existence,  
influence, or action of some agent or event

ATOMIC BLEACH

## GARDEN OF LIFE

A SACRED PLACE FOR THE COMMUNITY TO BRING HOPE THROUGH  
THE BIRTH OF SEEDS

ATOMIC BOMB DOME

## ETCHINGS OF THE FORGOTTEN

A PLACE TO COMMEMORATE THOSE LOST, ERASED THROUGH THE  
EVILS OF WAR



# BERLIN, GERMANY

TIERGARTEN PARK

BERLIN VICTORY COLUMN

GLOBAL STONE PROJECT

MEMORIAL TO  
THE MURDERED  
JEWS OF  
EUROPE

STARRING AT THE MEMORIAL TO THE MURDERED JEWS OF EUROPE, THE VICTORY COLUMN, AND THE GLOBAL STONE PROJECT - THIS MUSEUM DOES NOT ALLOW ANY TO GO UNNOTICED

SCALE : 1" = 100'



THROUGH THE ENCOUNTER OF TRACES AND ERASURES, THESE THREE SITES CONSTRUCT A MEMORIAL FOR BOTH THE INCONCEIVABLE DESTRUCTION OF WAR AND THE POSSIBILITY OF A HOPEFUL FUTURE.

WEIGHT OF DEATH

REMEMBER THE MEMORIAL TO THE MURDERED JEWS - FEEL THAT WEIGHT NOW ABOVE YOU

POOL OF HUMILIATION

THE ACTIONS OF ONE INDIVIDUAL BECOME THE ACTIONS OF US ALL

GARDEN OF LIFE

FROM WHERE YOU ETCHED NAMES ON THE STONE, YOU NOW PLANT A SEED OF LIFE

1. ENTRY TO BELOW

2. CARETAKER'S ROOM

3. THE WEIGHT OF DEATH

4. POOL OF HUMILIATION

5. ETCHINGS OF THE FORGOTTEN

6. GARDEN OF LIFE

7. WAR EXHIBIT

8. RECEPTION

SCALE : 1" = 50'



EACH CARETAKER MAINTAINS THE MUSEUM, SENT BY THE CITY TO PROTECT ITS HISTORY

## TROPE

/trohp/ noun

indicating a turning towards, development in the direction of, or affinity to; a turn or a twist, a transformation

BERLIN FROM ABOVE

ETCHINGS OF THE FORGOTTEN

A PLACE TO COMMEMORATE THOSE LOST, ERASED THROUGH THE EVILS OF WAR

GARDEN OF LIFE

A SACRED PLACE FOR THE COMMUNITY TO GIVE HOPE THROUGH THE BIRTH OF SEEDS



# CHICAGO, UNITED STATES

STAGG FIELD

STAGG FIELD, UNIVERSITY OF CHICAGO

METALLURGICAL LAB, BELOW STAGG FIELD - IT CANNOT HIDE. THE DEVELOPMENT OF THE ATOMIC BOMB DERIVED FROM THE BASEMENT IN THAT LOCATION. HUNDREDS OF THOUSANDS DIED - THEY CALLED IT VICTORY.

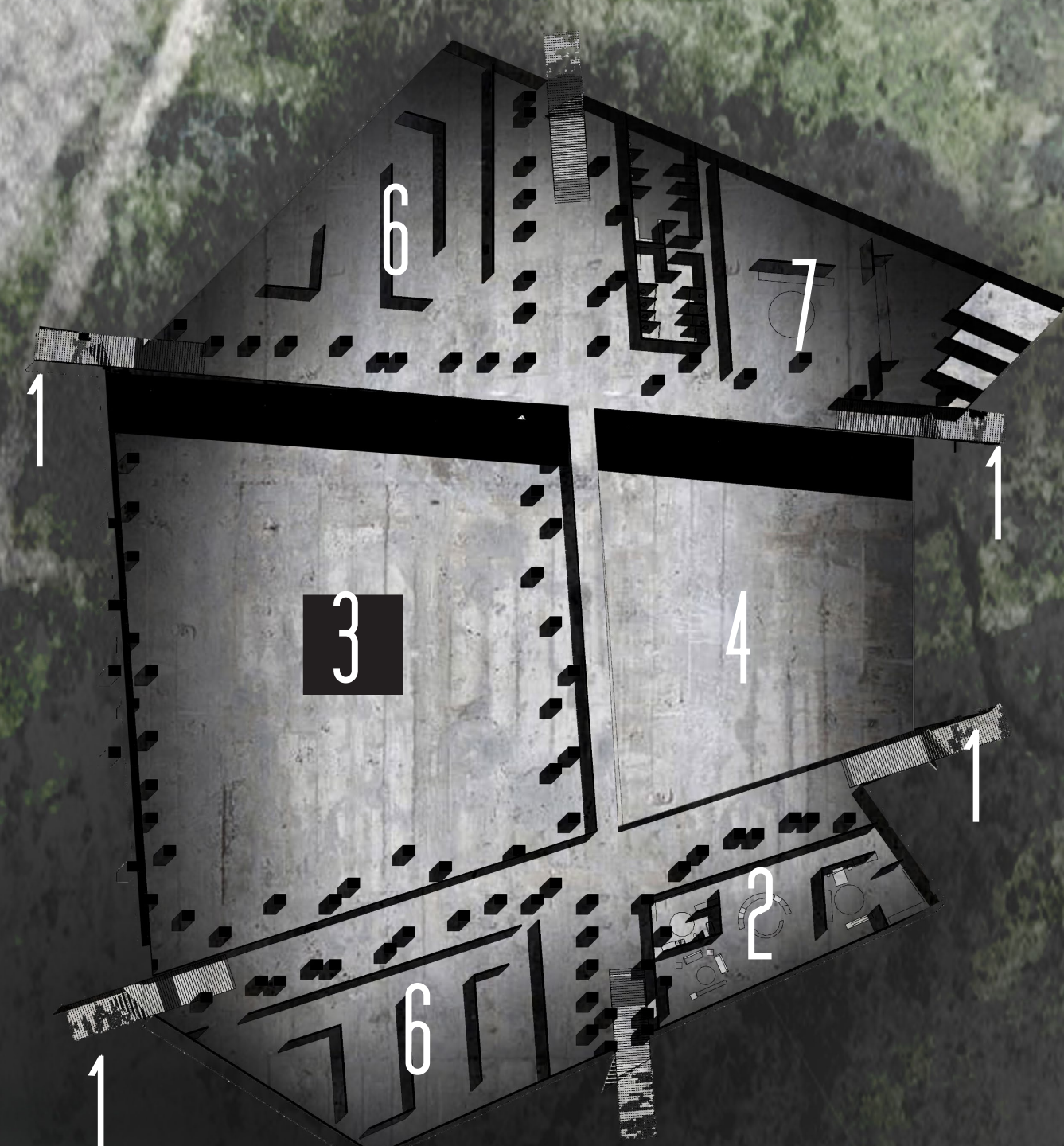
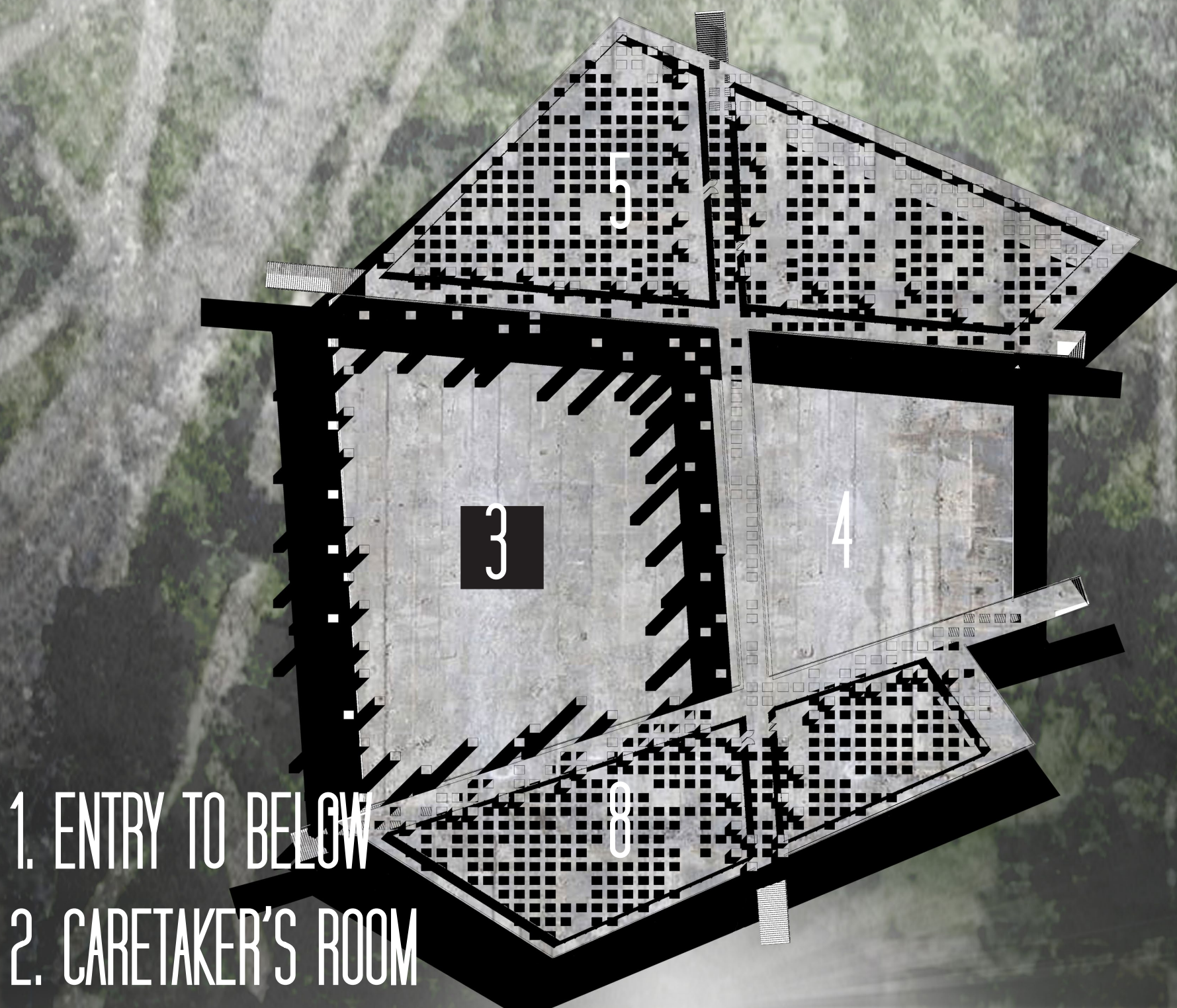
SCALE : 1" = 100'



IT IS NO LONGER ABOUT THE DIRECT REPRESENTATION OF DEATH, RATHER A LABYRINTHINE EXPERIENCE WHERE VISITORS TRANSPORT HISTORICAL MEANINGS BETWEEN SPACES AND OBJECTS.

THE WAY OUT  
CAREFULLY LIT TO ILLUMINATE THE ROWS OF  
LIFE TAKEN, FORGOTTEN

POOL OF REFLECTION  
CHICAGO'S HISTORY - THEIR ACTIONS  
PORTRAYED FOR ALL TO RECOGNIZE

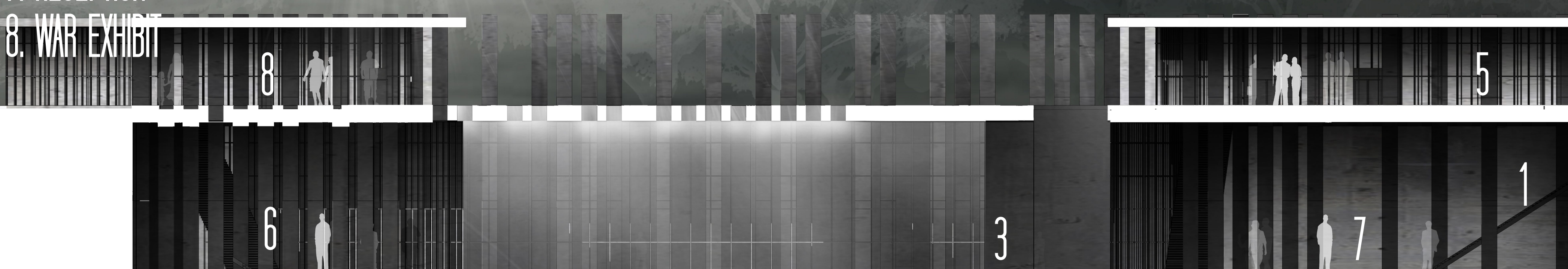


1. ENTRY TO BELOW
2. CARETAKER'S ROOM
3. THE POOL OF REFLECTION
4. WAR EXHIBIT
5. INFINITE ASH
6. ARTIFACT/ART STORAGE
7. RECEPTION
8. WAR EXHIBIT

SCALE : 1" = 50'



EACH CARETAKER MAINTAINS THE MUSEUM,  
SENT BY THE CITY TO PROTECT ITS HISTORY



# TRANSCEND

/tran(t)'scend/ verb

to rise above or go beyond the limits of; to be prior to, beyond,  
and above; to rise above or extend notably beyond ordinary

ATOMIC BOMB DROP



INFINITE ASH

A ROOM OF REFLECTIVE MIRRORS AND ASHES, TURNING A LANDSCAPE OF  
GREEN AND TREES INTO A FLATTENED LANDSCAPE OF ASHES

ZACH MOEN + DESIGN THEISTS | ARCH 372 | SPRING 2013 | UNIVERSITY OF CHICAGO