



Oncology Center:

Healing Through Architecture

Stina Ostlie

Thesis Question:

What is the ideal environment to help patients and their families battling cancer heal emotionally and physiologically through architecture and design?

What and Why

- The emphasis of my project is to focus on the emotional, mental, and spiritual wellbeing of patients with cancer.
- This design must show that there is no specific right way to heal or treat someone. Every person is different and requires different needs.
- It is also important to bring a sense of normalcy upon the patients.
- My plan is to create a uniquely responsive place that has the potential to aid the healing process and provide a space that reinforces dignity, security, control, and normalcy.
- To me, it is imperative that this should be my thesis project. My mom was diagnosed last summer with cancer. I have had a firsthand experience witnessing the reactions and feeling of someone told they have cancer.
- I want to design something that is worthwhile and would lessen the weight on patients with cancers' shoulders.
- Currently, this is a small niche in the architecture world and if something like this was designed and built, it would be the first of its kind in the U.S.

Research



CHOICE AND CONTROL

- » Center Focused
- » Patient Focused



VISUAL, ARTS, COLORS, SOUND

- » Desired Emotional Feeling
- » Textures, Naturals
- » Color Schemes



FURNITURE, PHYSICAL ELEMENTS

- » Small Elements
- » Large Elements



SPATIAL LAYOUT

- » Design Elements
- » Architectural Elements
- » Additional Services
- » Movement, Configuration



Case Study - Maggie Center - West London

- Maggie's Centres provide practical, emotional and social support for people with cancer, and their family and friends, following the ideas about cancer care originally laid out by Maggie Jencks.
- Inspired by Richard Rogers's concept of a heart nestled in the protective wrap of a building's four walls. Rogers said: "The idea was to try to minimize the overbearing impact of Charing Cross Hospital. The roof, the landscaping, the hearth inside, the views out, each was to take you away from the hospital and the bustle of the road."



Location: London,
UK

Project typology:
Cancer Care
Center

Date completed:
2008

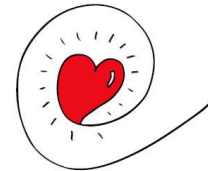
Architect: Rogers
Stirk Harbour +
Partners

Size: 1213 ft²

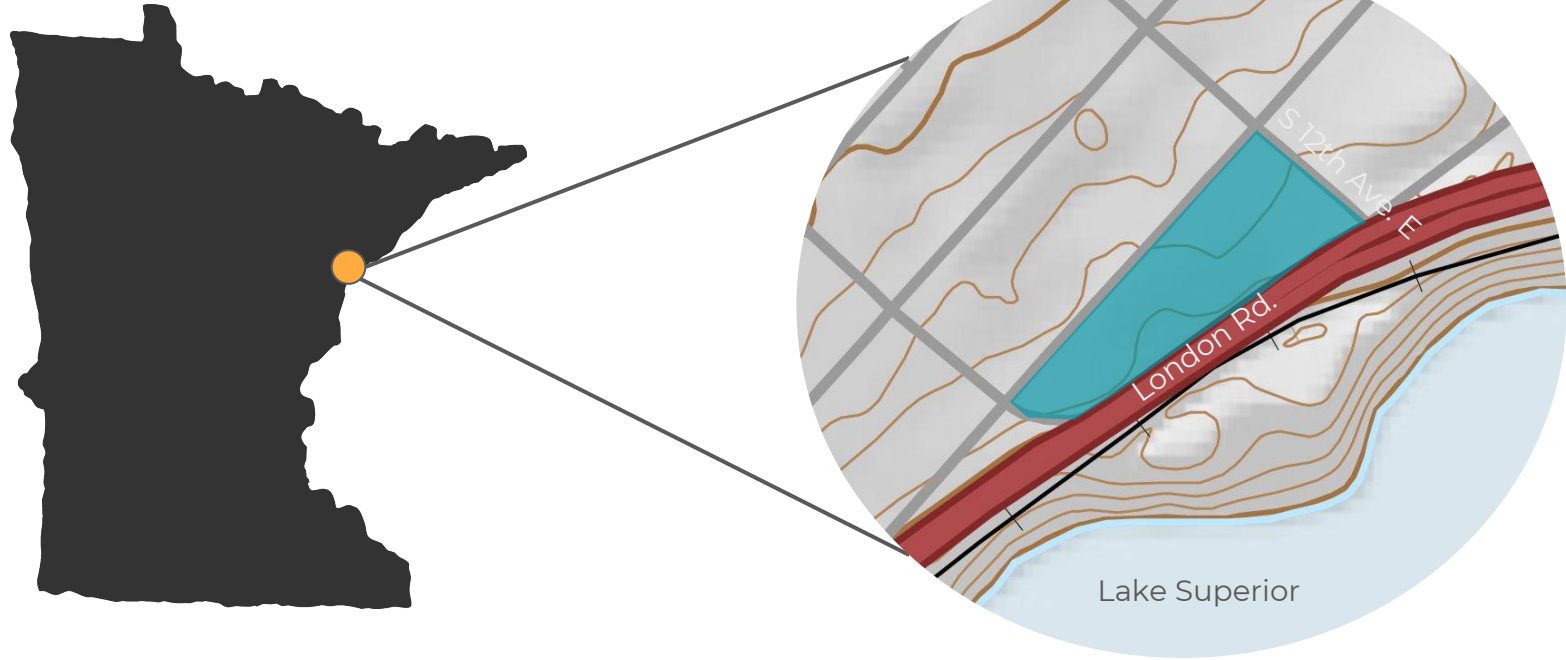
Case Study - Maggie Center - West London



- A kitchen area acts as the heart of the building; its openness and importance is reinforced by its juxtaposition with surrounding courtyard winter gardens, sitting rooms and smaller, more personal caring spaces.




Site: Duluth, MN



- Proximity to nature and other medical facilities.
- Located in an area that has an adequate amount of people for the facility to be staffed and filled with patients.
- Within walking distance to secluded landscape area or nature.
- Within walking distance to:
 - Multiple grocery stores
 - First Lutheran Church
 - CVS
 - Walgreens
 - St. Luke's Hospital
 - Duluth Rose Garden



Pre-Design

- This oncology center is based off Europe's' successful ***Maggie Centers***
- Notes about Maggie Centers:
 - Design is a contrast from opposing hospital buildings
 - Smaller, domestic scale
 - Flexible space that is able to accommodate very different and important tasks
 - Domestic-like retreat
 - Avoid corridors - at least keep space feeling open
 - The kitchen =  of home
 - Size about 950 sq. ft.
 - Interior subdivided into private and communal spaces

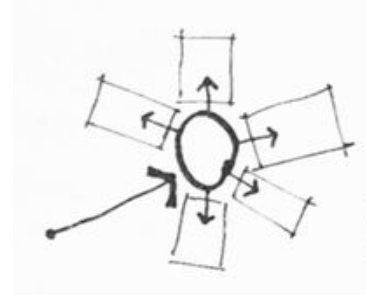
Pre-Design

1. What is the aesthetic of Duluth?
2. What makes it unique?
3. How would a designer/artist describe Duluth?
 - Beauty Lake Superior and wilderness
 - Cold in winter
 - Sense of community
 - Silver Beech trees
 - Timber framing
 - David Salmela
 - Regional architect
 - Vernacular?
 - Based on local needs, availability of construction materials and reflecting local traditions



Design Decisions

- Radial or Centralized organization
- Communal kitchen and dining in the middle, everything else spawn from that
- Spaces:
 - Kitchen
 - Sitting/Yoga
 - Gathering/communal
 - Intimate seating
 - Studio/Art
 - Garden/courtyard
 - Outside path
 - Bathroom
 - Offices
 - Private meeting space
 - Storage
 - Mech.

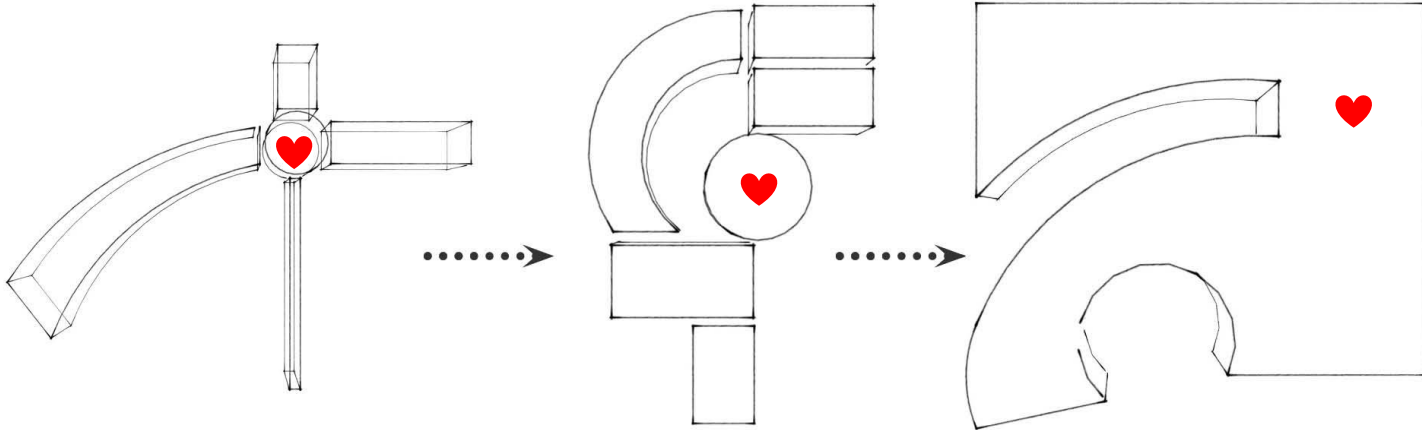


Design Decisions

- Material choices:

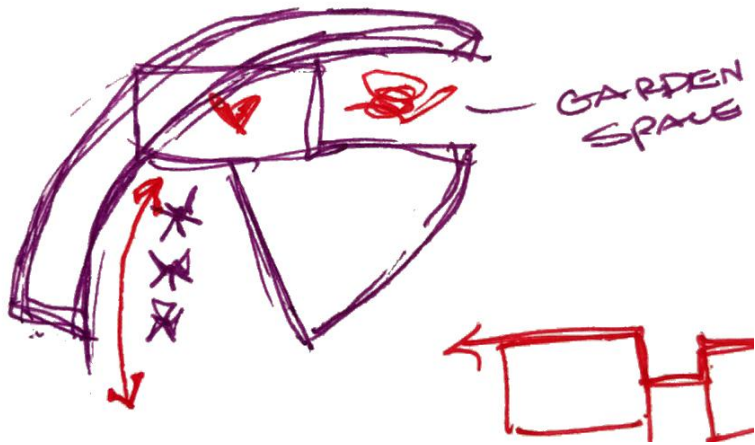
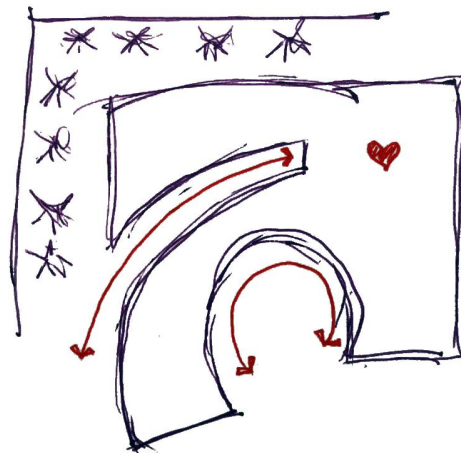
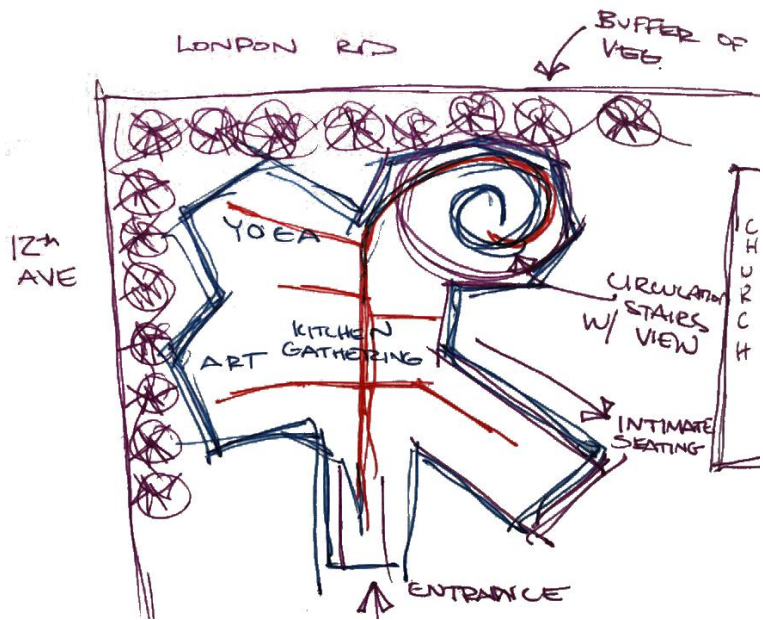


Process

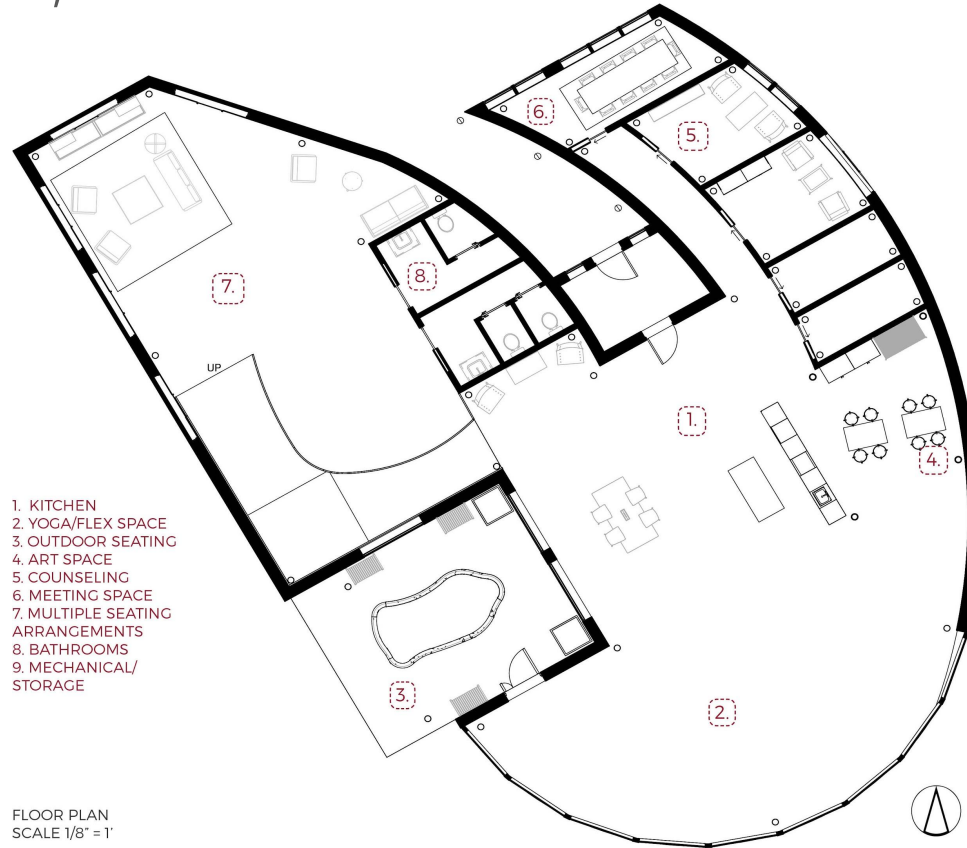


- Centralized and Radial Organization
 - Central - a central dominant space about which a number of secondary spaces are grouped
 - Radial - a central space from which linear organizations of space extend in a radial manner

Iterations



Floor Plan - 4,291 SF



- This solution has great views to Lake Superior and the Duluth Rose Garden.
- The kitchen is centered in the middle.
- Entrance pulls you in with the curved pathway.
- Intimate seating is slightly sunk into the ground.

Spaces



- Support service areas – social workers, dietitians, other members of health care team - Because cancer is a very physically, emotionally, and mentally draining disease, patients need to have access to social support and counseling.



- Multiple different patient room layouts (one person rooms, multiple person rooms) - From my observations and talking to my mom, I think there should be multiple spaces for patients to choose from.

Spaces



- Inpatient/Outpatient services - Just like the multiple different organizations of room layouts, there needs to be the option of inpatient or outpatient services. It depends on the patient, how far along their disease is, how far away they live etc.

Spaces



- Spaces for retreat/rejuvenation - After enduring chemotherapy and the whole process that comes with that, there should be a place for the patient to relax a little bit and rejuvenate.



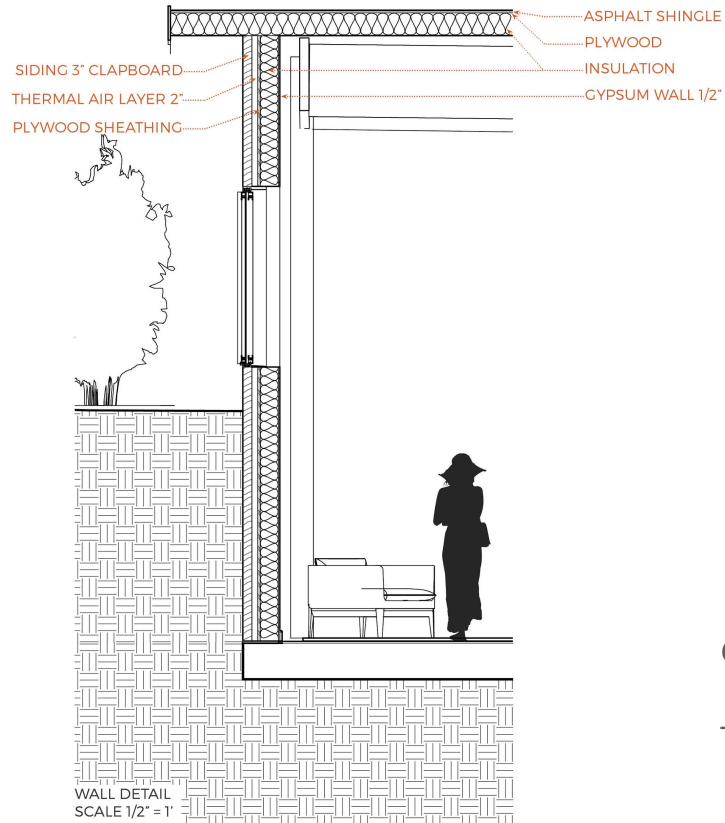
Site Plan



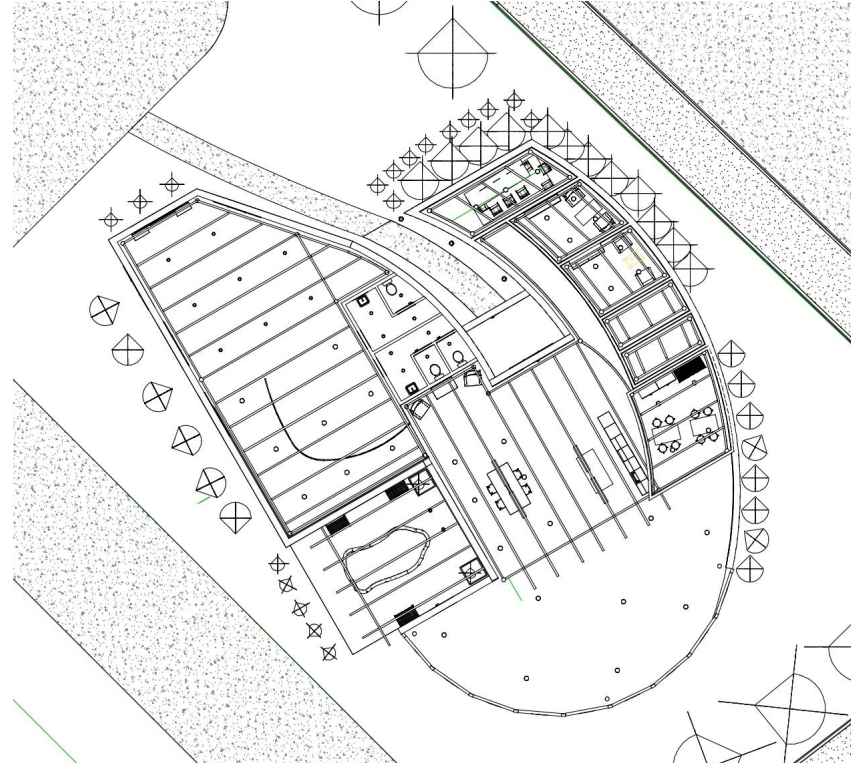
Local Vegetation:

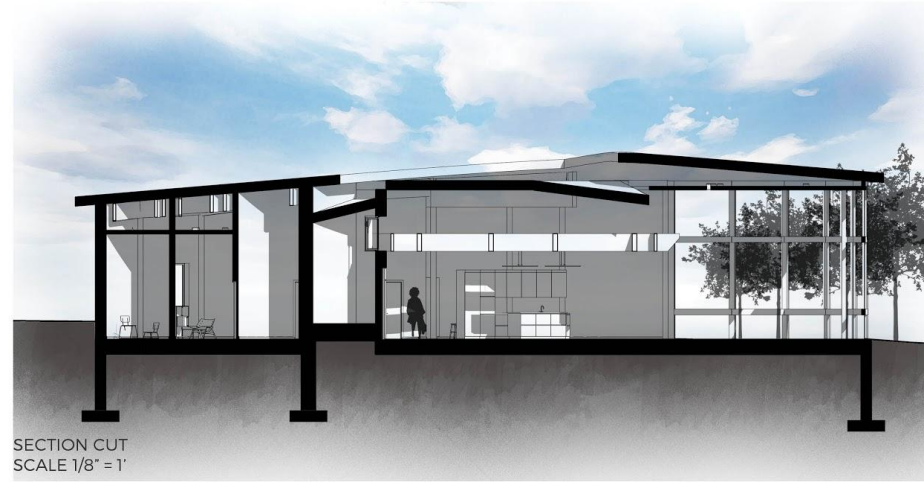
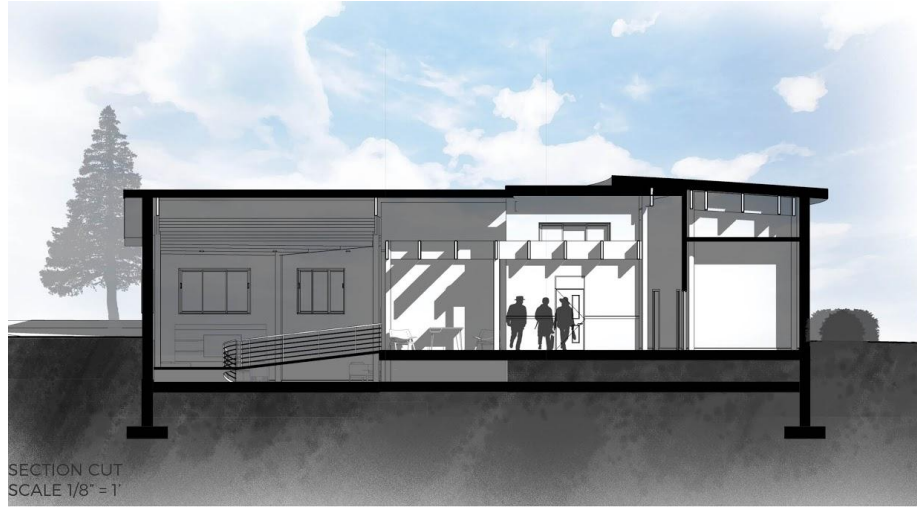
- Red Maple
- Honey Locust
- Eastern Hemlock
- Douglas Fir
- White Pine
- Red Cedar
- Lilac
- Hydrangea
- Viburnum
- Boxwood
- Switchgrass

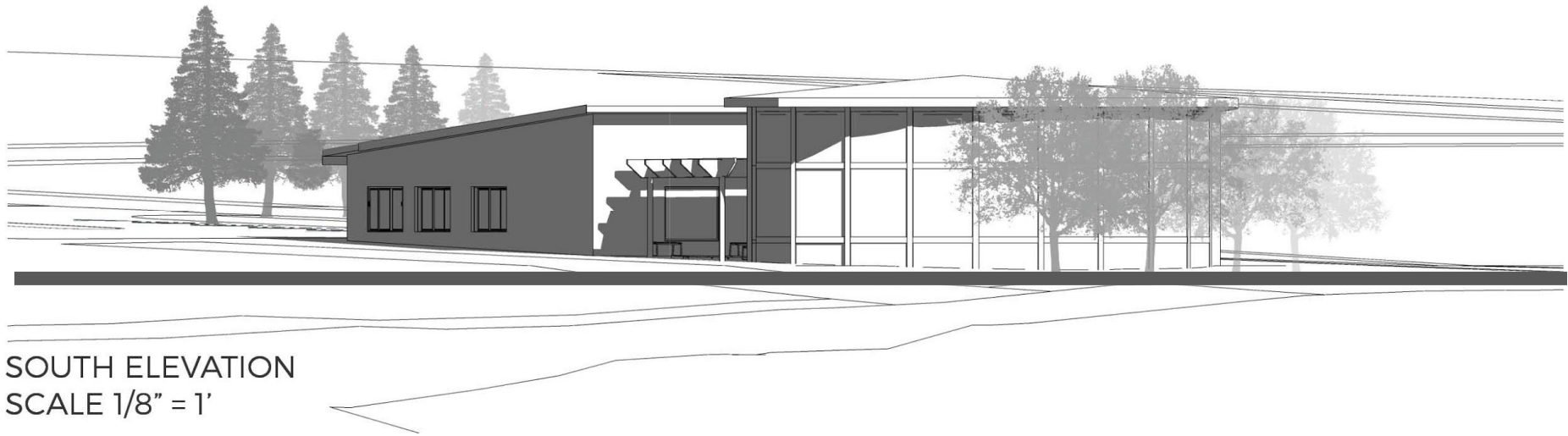
Structure

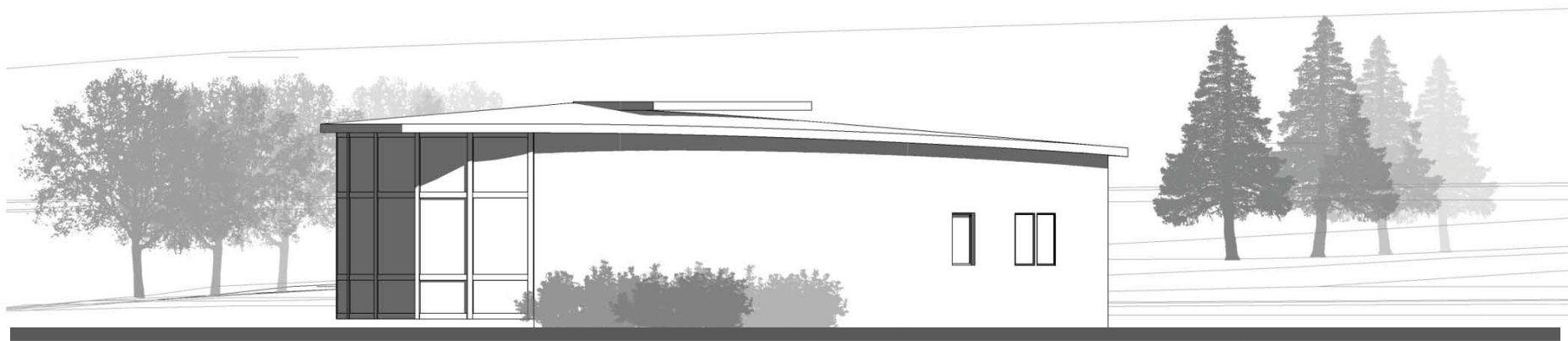


Glulam
&
Timber

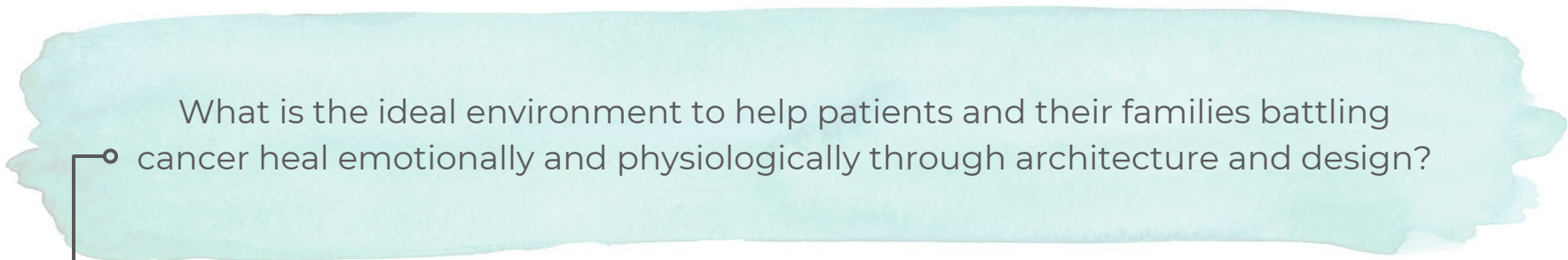









EAST ELEVATION
SCALE 1/8" = 1'



What is the ideal environment to help patients and their families battling cancer heal emotionally and physiologically through architecture and design?



The ideal environment is a space that is comfortable, peaceful, and accommodating. It features natural light and textures, a communal gathering space, various intimate seating arrangements, and multi-use spaces. Using a warm color scheme gives the space a welcoming feeling. The wooden beam system is a nod to the vernacular of Duluth and its local architects. I think that with the research that I have done and the information from the Maggie Centres, this would be a great blueprint of the ideal healing environment for patients with cancer.

Thank You!

