

The background of the slide features a horizontal band of intricate, textured material in shades of gold and white, resembling a woven fabric or a cross-section of a mineral specimen. This band is centered and spans the width of the slide, with the title text overlaid on it.

# The Architecture of Happiness

By Morgan Larson

# Initial Thesis Questions

- Can the quality of space; particularly lighting, space(void), and material, have an impact on the quality of life and perception of a Nursing home?
- How may the results of my research redefine the typology and requirements needed programmatically in a Nursing Home facility?
- How might Phenomenology be used in the process of design in order to answer these questions?

# Phenomenology

Is the philosophical study of the structure of experience and consciousness.

In its most basic form, phenomenology attempts to create conditions from the objective study of topics usually regarded as subjective: consciousness and the content of conscious experience such as **judgements**, **perceptions**, and **emotions**.



The Stanford Encyclopedia of Philosophy says that:

“The central structure of an experience is its intentionality, it's being directed toward something, as it is an experience of or about some object. An experience is directed toward an object by virtue of its content or meaning together with appropriate enabling conditions.”

# Elements of Influence

# Case Studies



Jewish Museum by Daniel Libeskind



Kolumba Museum by Peter Zumthor



Therme Vals by Peter Zumthor



Home for Senior Citizens by Peter Zumthor



Manuel Ocaña's Santa Rita Geriatric Center



Minnesota Masonic Home



Lakeside Senior Apartments; Oakland, California

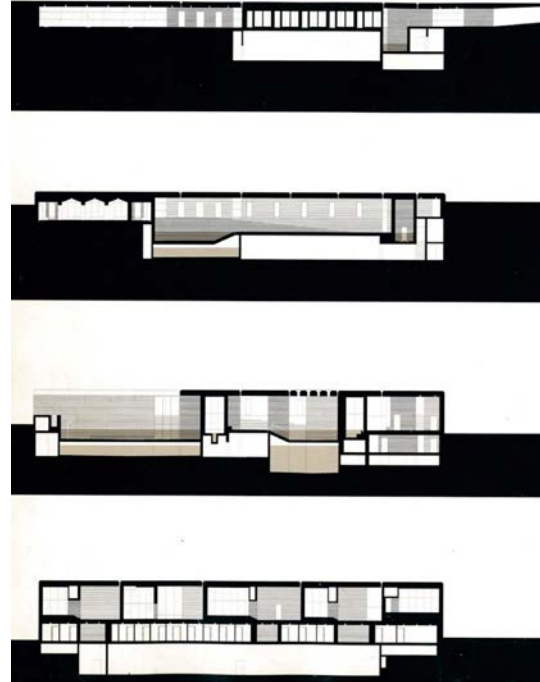
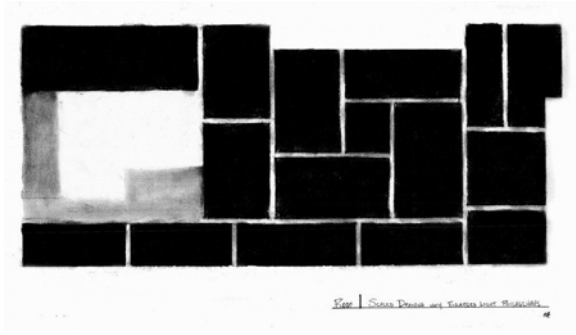


Monteverde Senior Apartments; Orinda, California



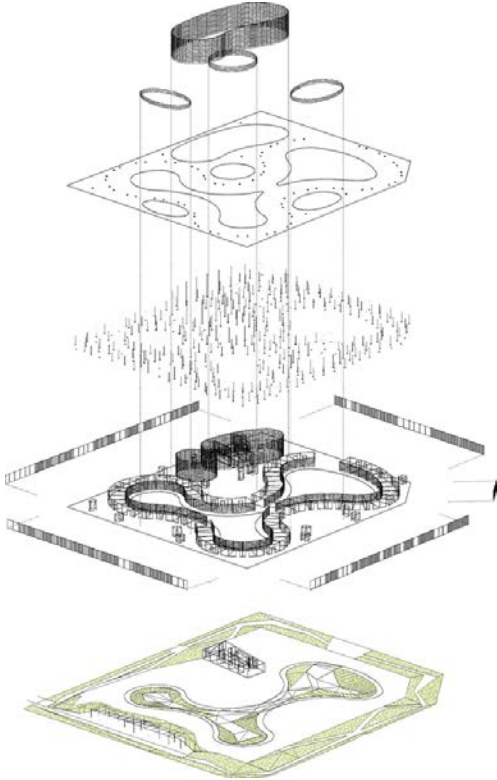
Design Excellence for the Homeless at New Carver  
Apartments; Los Angeles, California

# Therme Vals by Peter Zumthor





# Santa Rita Geriatric Center by Manuel Ocaña







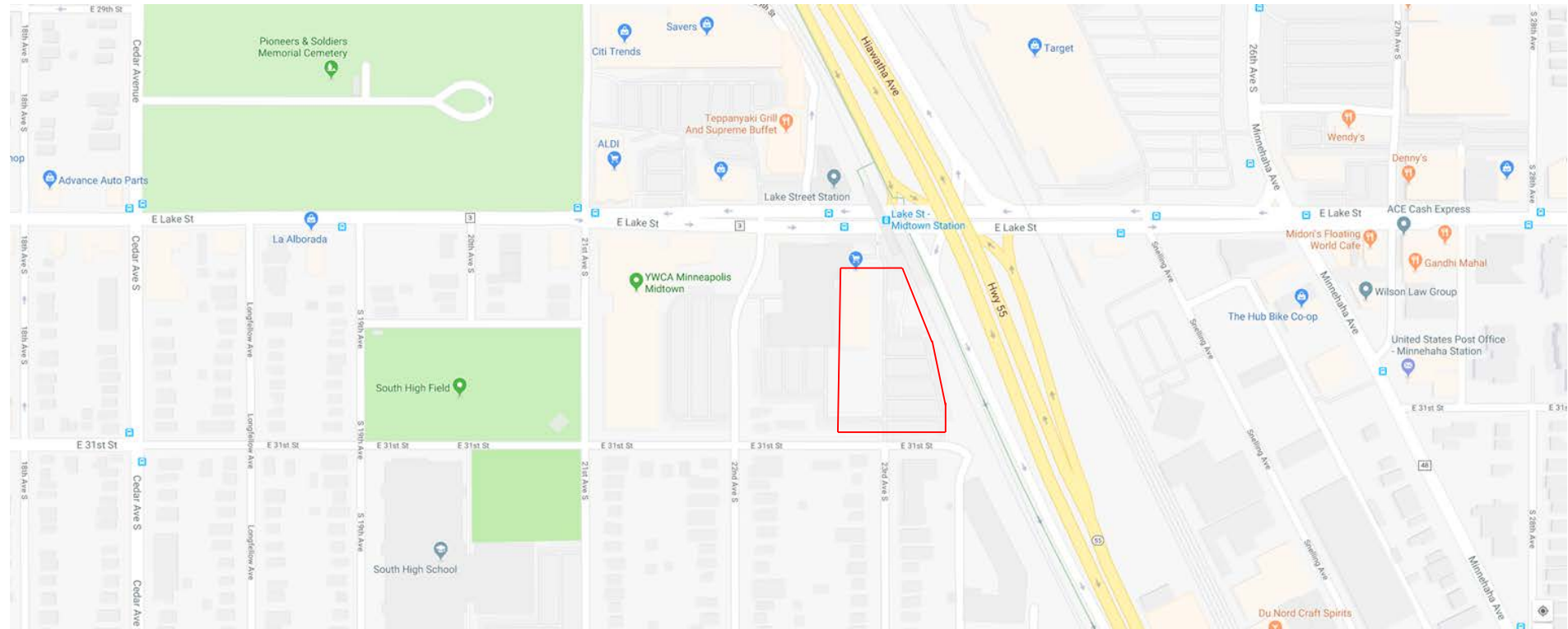
# Nursing Home Research

**Quality of Life for Diverse Older Adults in Assisted Living: The Centrality of Control:** Three Assisted Living facilities, three focus group interview with tenants at each facility and six interviews with staff at each.

## *Case Studies:*

**Friendship Center at Schooley Mountain:** follows the progress of incorporation of a childcare facility into the nursing home and the benefits of it to the tenants.

**Providence Mount St. Vincent in Seattle:** The child care facility was added on the premises to combat the loneliness and boredom the tenants often felt in the nursing facility. Research done by Kumiko Morita and Minako Kobayashi in 2013 suggested that child care within nursing homes is linked to decreases in loneliness, delayed mental decline, lower blood pressure, and reduced risk of disease and death in elders.









# MIDTOWN FARMERS MARKET







eliminating racism  
empowering women  
**ywca**  
Minneapolis







# Typology

Assisted Living Facility with a  
Community Connection

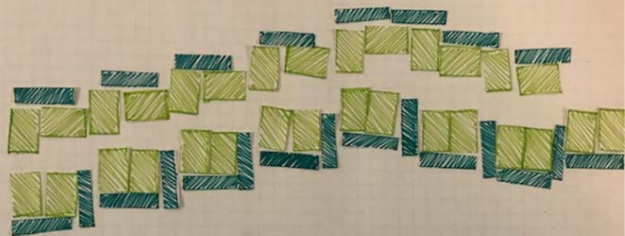
Private:  
1 Bedroom  
Apartments.....500ft<sup>2</sup>  
2 Bedroom  
Apartments.....700ft<sup>2</sup>  
Break Out Community  
Space.....(Variable)  
Private  
gardens/patios.....(Variable)

Public/Community:  
Daycare.....1000ft<sup>2</sup>  
Wellness Center .....1500ft<sup>2</sup>  
Cafe.....1000ft<sup>2</sup>  
Community Classrooms.....360ft<sup>2</sup>  
Interior Garden/Green Space.....(Variable)

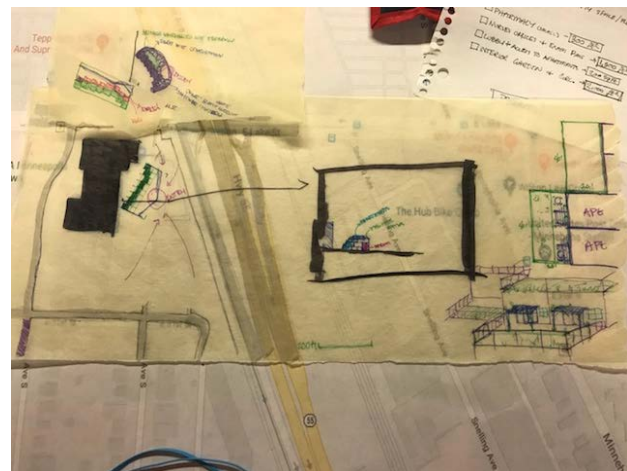
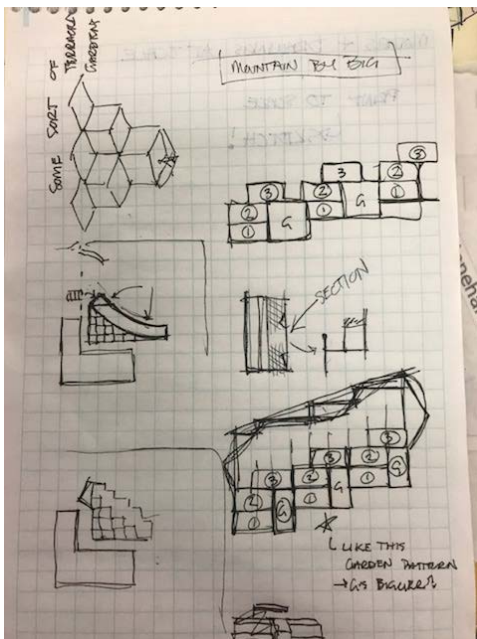
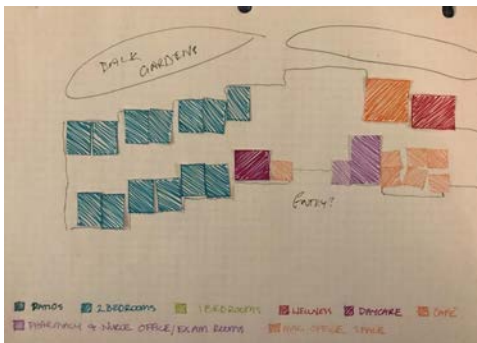
Office:  
Security.....200ft<sup>2</sup>  
Rentable space (Community offices).....1000ft<sup>2</sup>  
Administration offices.....1000ft<sup>2</sup>

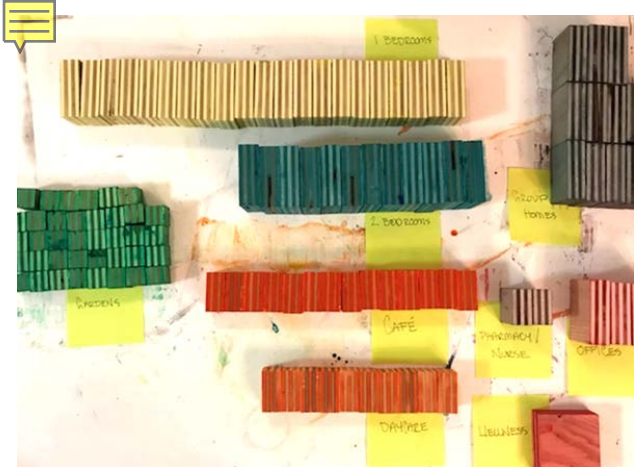
Health:  
Pharmacy.....300ft<sup>2</sup>  
Nurses Offices and Exam Rooms.....1500ft<sup>2</sup>  
Spa.....





■ PLOTS ■ 2 BEDROOMS ■ 1 BEDROOMS ■ WELLNESS ■ DAYCARE ■ CAFE  
 ■ PHARMACY & NURSE OFFICE/EXAM ROOMS ■ MING OFFICE SPACE

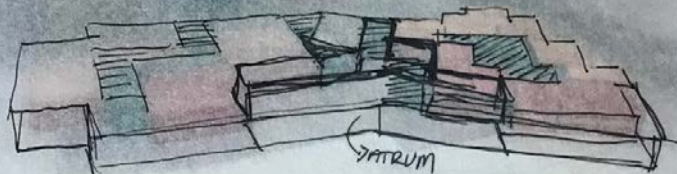




- Garden Spaces
- 2 Bedroom Apartment
- Nursing Offices
- 1 Bedroom Apartment
- Offices
- Childcare Facility
- Cafe
- Wellness Center







atrium

GREEN SPACES FOR PROMOTION OF COMMUNITY, NEIGHBORHOOD BOND → PROMOTE SENSE OF CURIOSITY ON ENVIRONMENT

GREEN SPACE SHARED w/ 2 ONE BEDROOMS & 2 BEDROOM

GREEN SPACE SHARED w/ 1 BEDROOM & 2 BEDROOM

COMMUNITY LOUNGE / FLEX ROOM w/ LARGE KITCHEN + SPACE. CONNECTION POINT ON 2ND FLOOR

SHARED GREEN SPACE BETWEEN 2 2 BEDROOMS & 1 1 BEDROOM

GREEN SPACE SHARED w/ 2 ONE BEDROOMS

GREEN SPACE COMMUNITY

PRIVATE 2 BEDROOM GREEN SPACE

ZEN GARDEN - WALKING PATH FOR CONTEMPLATION  
GREEN WAY TO PROMOTE OFFICES  
GREENWAY AROUND NURSING OFFICE & PHARMACY FOR RELAXING MIND



atrium:

OPEN, EASY TO NAVIGATE, HIGHLY ACCESSABLE

PERMUTIVE QUALITIES:  
SOME LEVEL OF AWE  
WELCOMING  
CHEERFUL

GARDEN SPACE BETWEEN CAFE & DAYCARE.

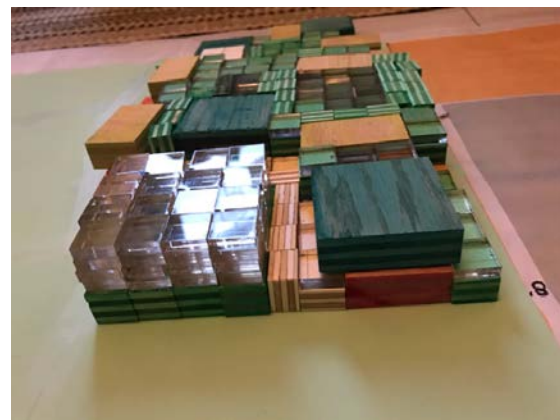
↳ NOT ACCESSABLE TO CAFE → SECURE PLAY GROUND FOR CHILDREN

OUTDOOR SPACE FOR CAFE



- Garden Spaces
- 2 Bedroom Apartment
- Nursing Offices
- 1 Bedroom Apartment
- Offices
- Childcare Facility
- Cafe
- Wellness Center



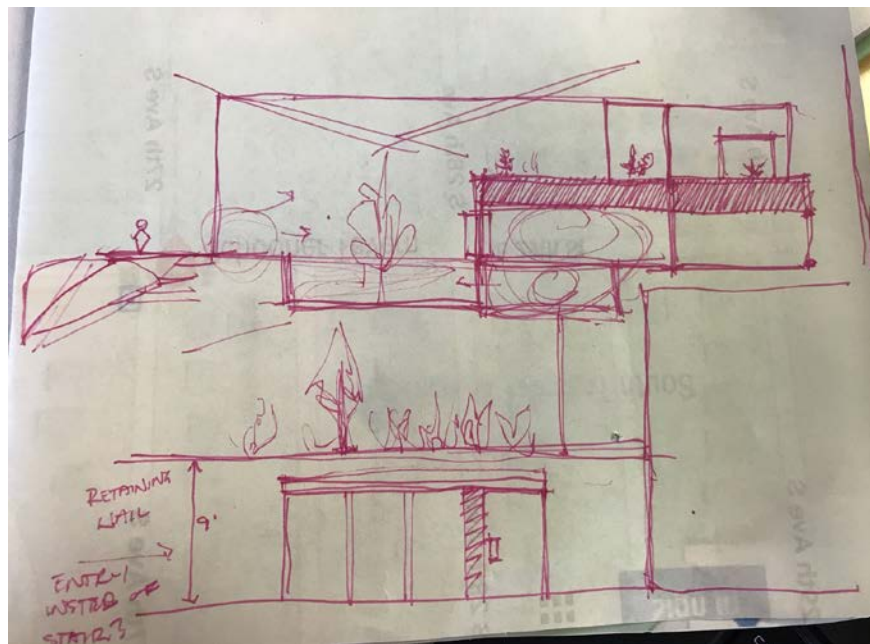


- Garden Spaces
- 2 Bedroom Apartment
- Nursing Offices
- 1 Bedroom Apartment
- Offices
- Childcare Facility
- Cafe
- Wellness Center



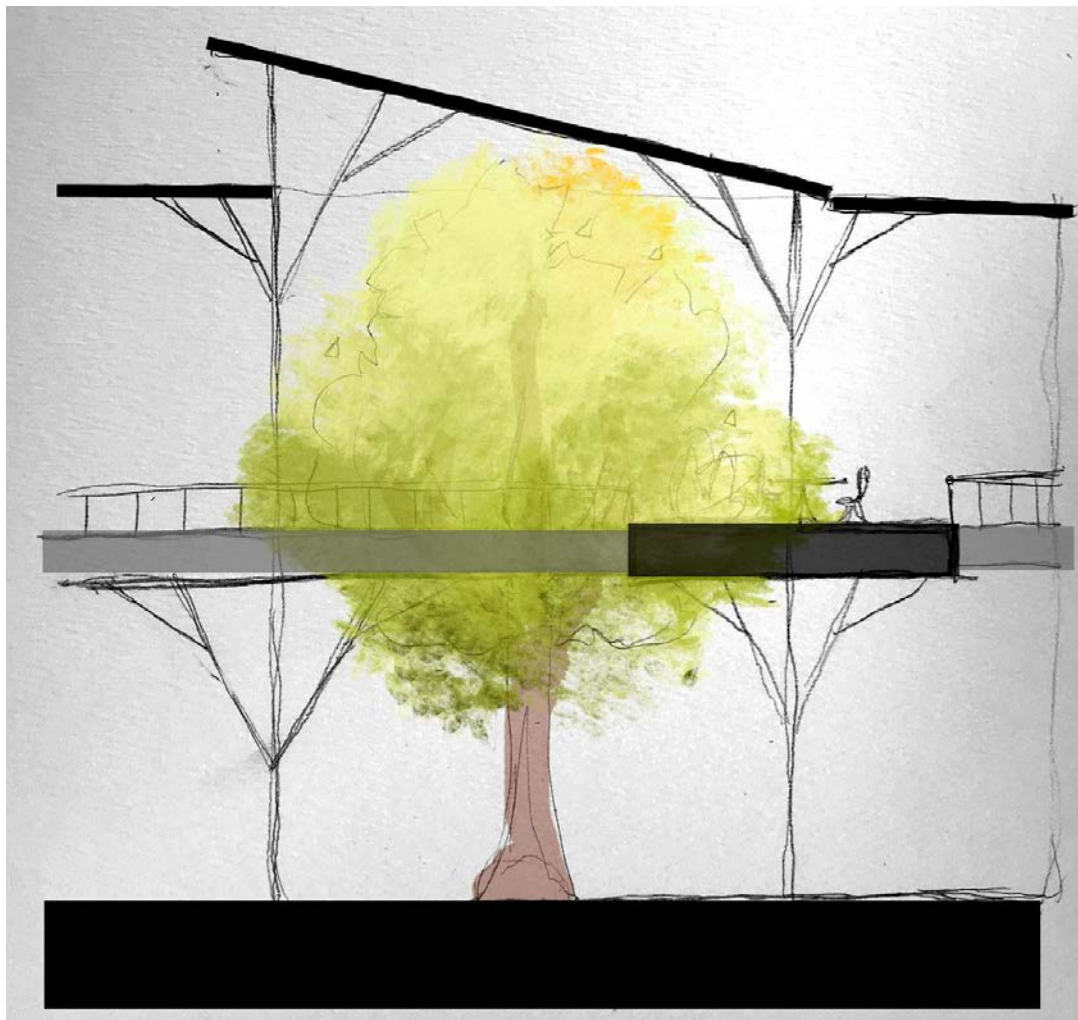


- Garden Spaces
- 2 Bedroom Apartment
- Nursing Offices
- 1 Bedroom Apartment
- Offices
- Childcare Facility
- Cafe
- Wellness Center



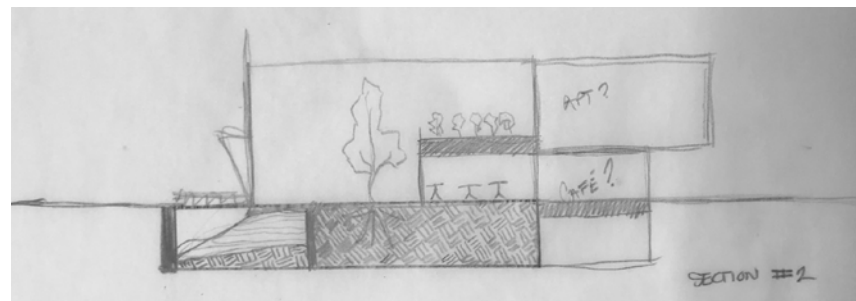
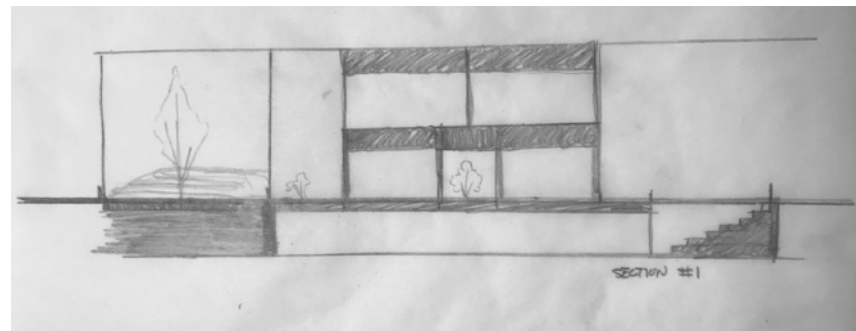
- Garden Spaces
- 2 Bedroom Apartment
- Nursing Offices
- 1 Bedroom Apartment
- Offices
- Childcare Facility
- Cafe
- Wellness Center



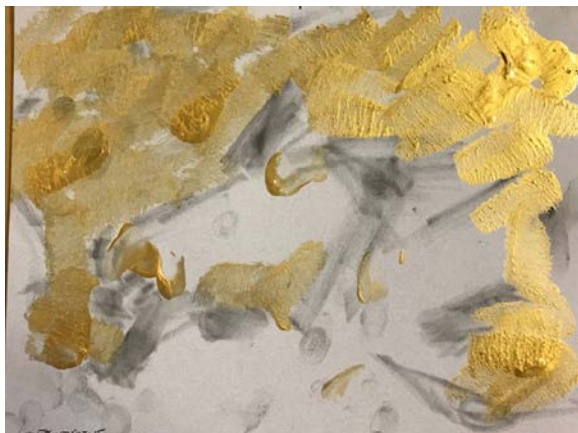


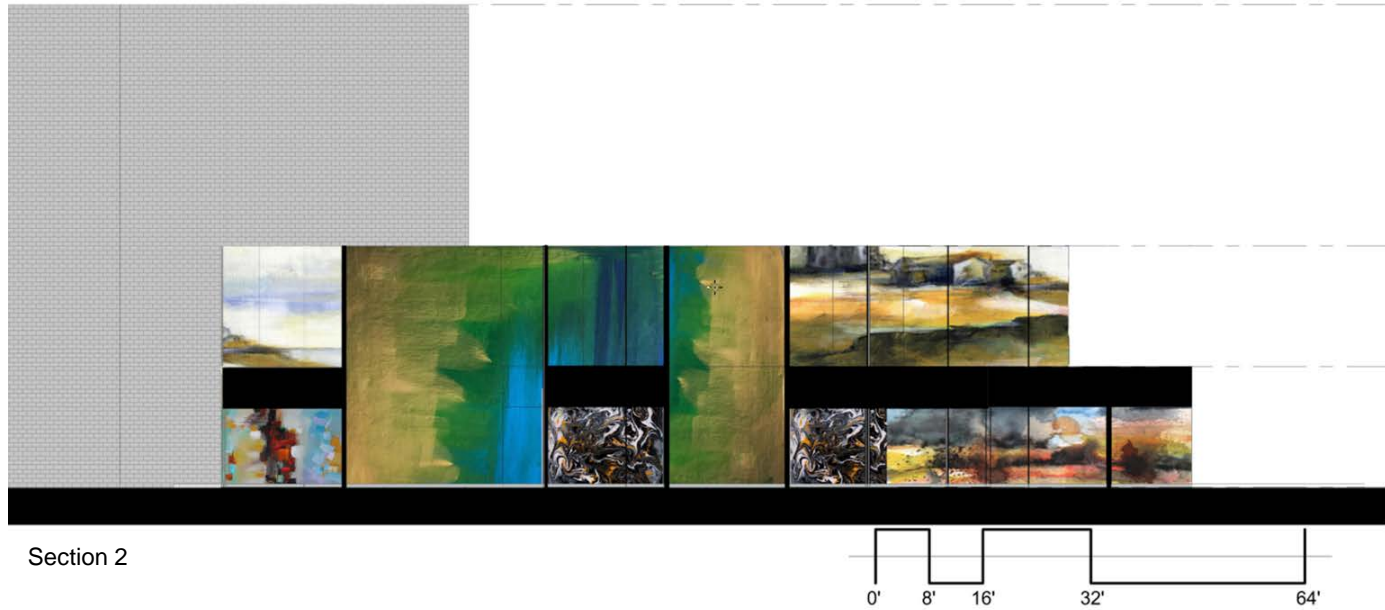
Cafe window design

Preliminary atrium design









The Current Iteration...



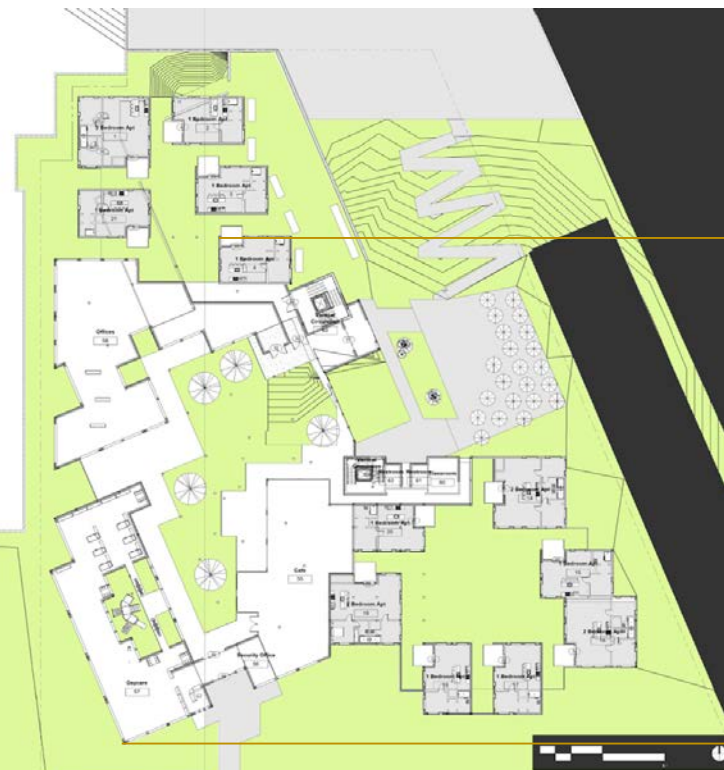


Ground Floor Plan





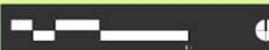




First Floor Plan



Second Floor Plan



## First Floor Plan



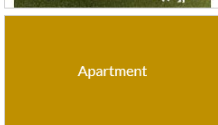
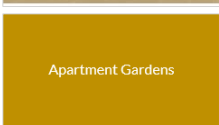
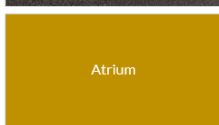
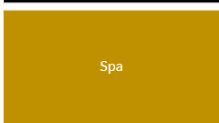
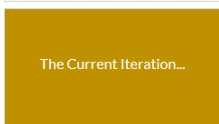
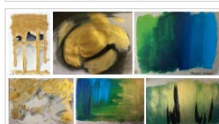
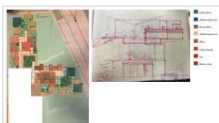
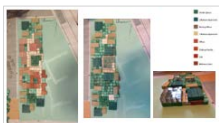
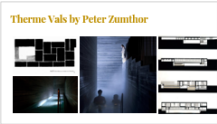
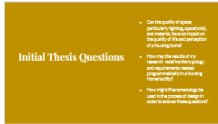




Second Floor Plan

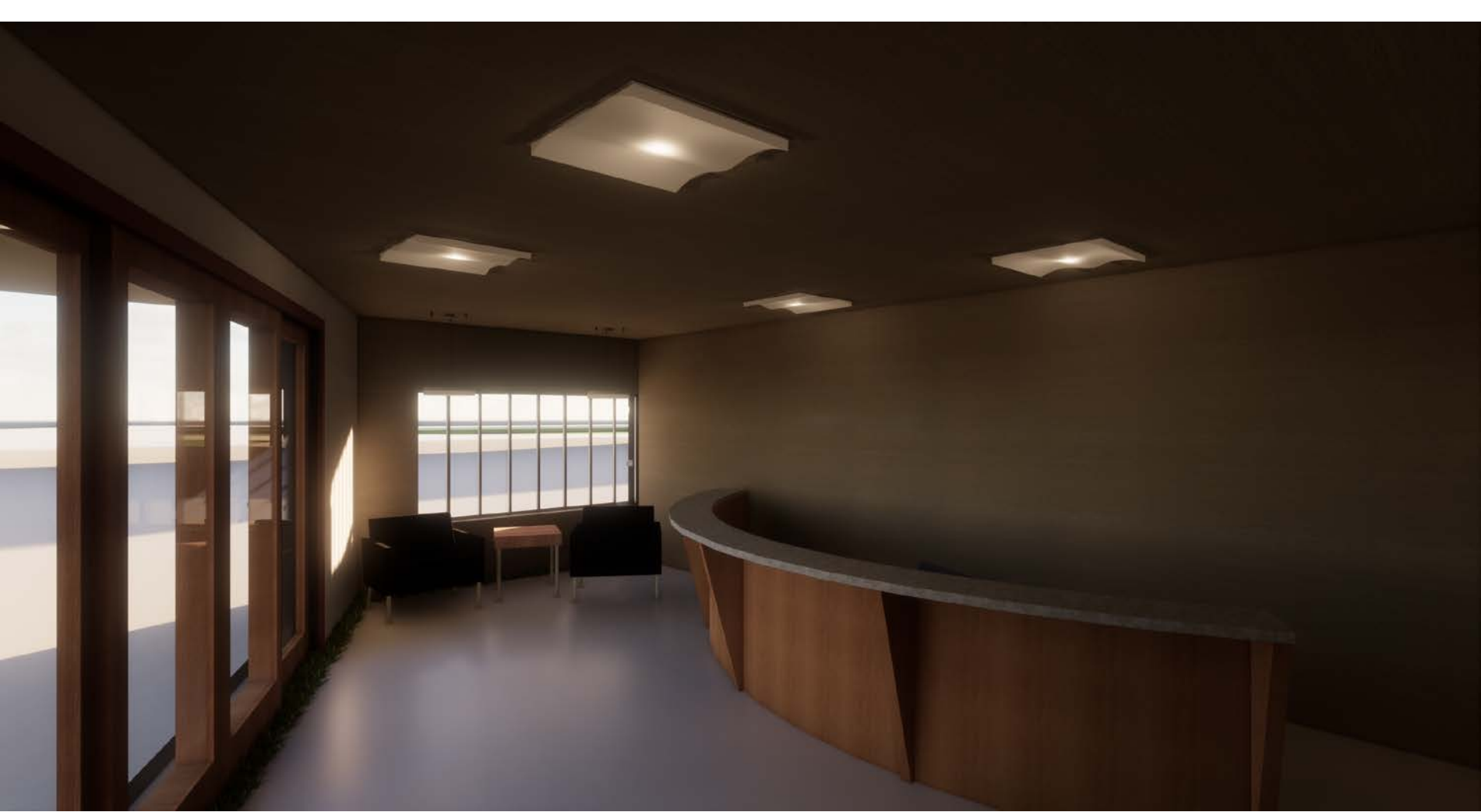




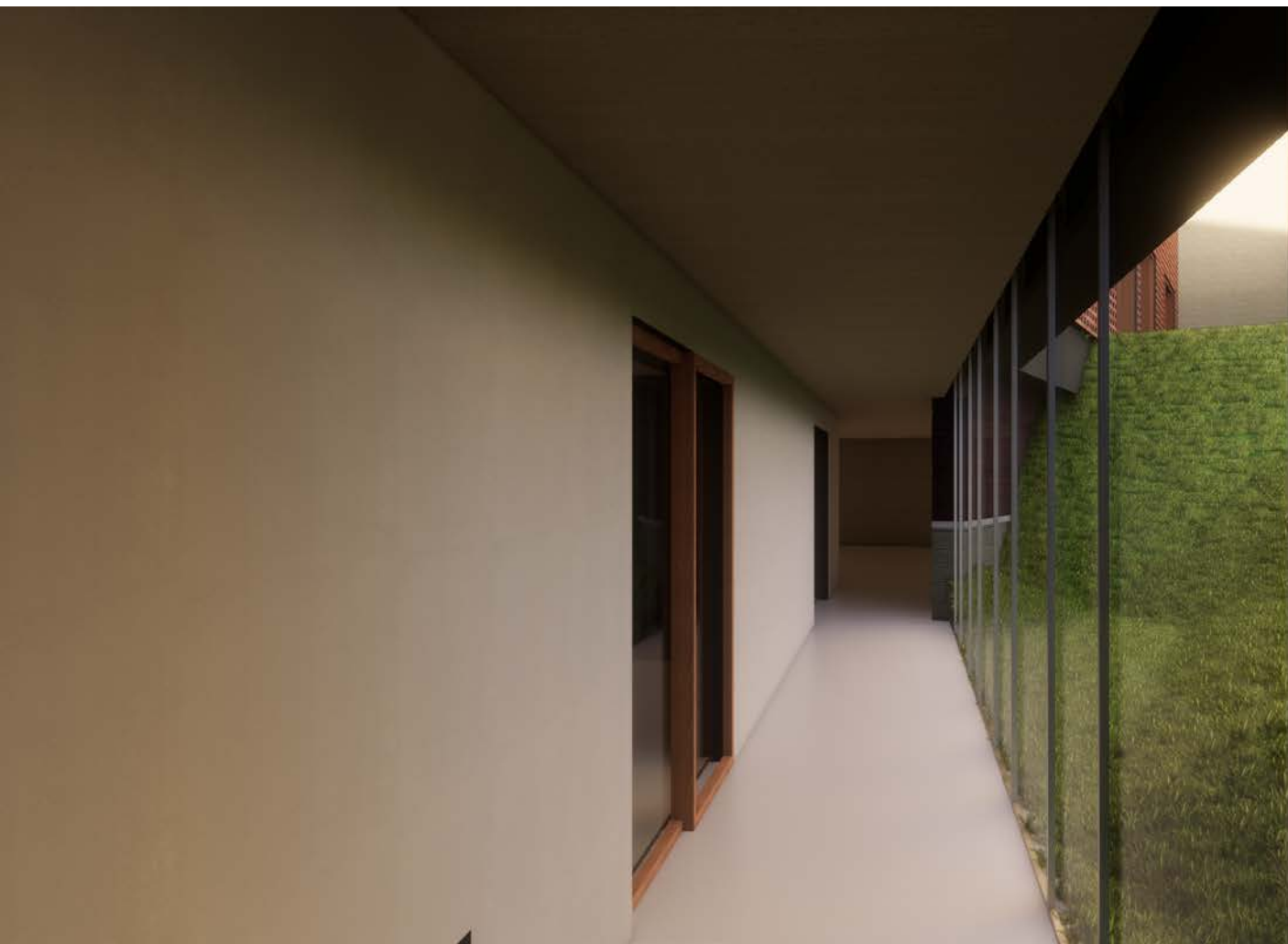




Spa









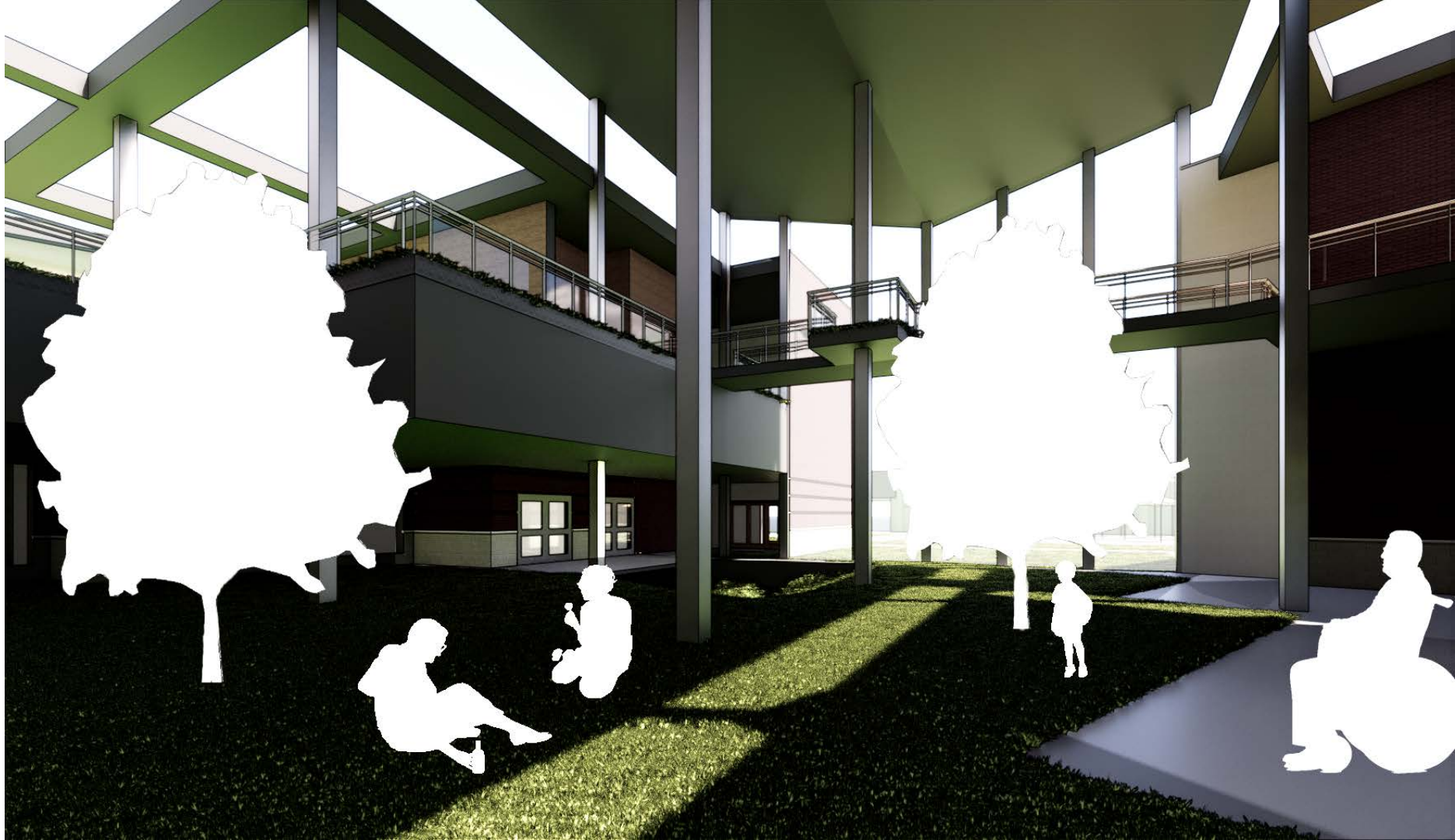
Atrium















# Apartment Gardens











Apartment

