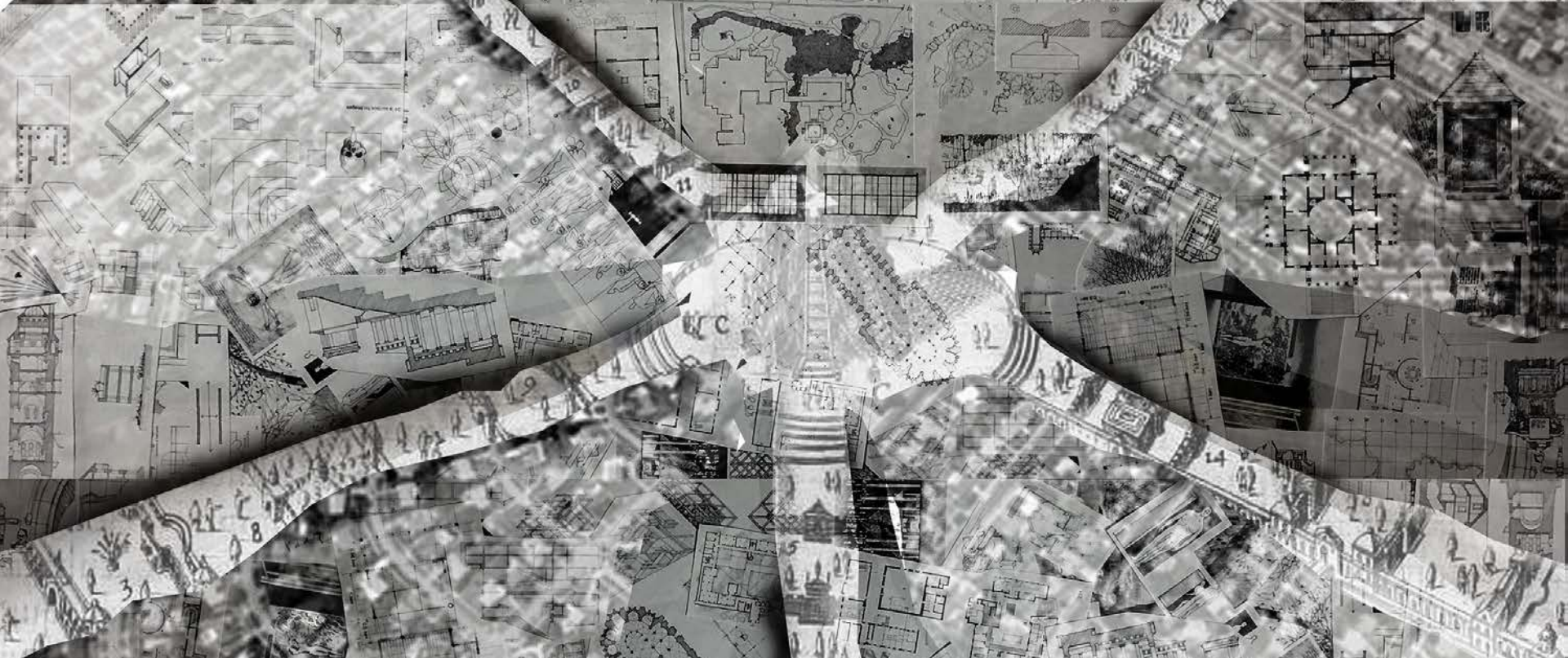


Refractive Architecture

A paradigm shift in educational design.

Matthew Plasencia | Spring 2018 | Wischer



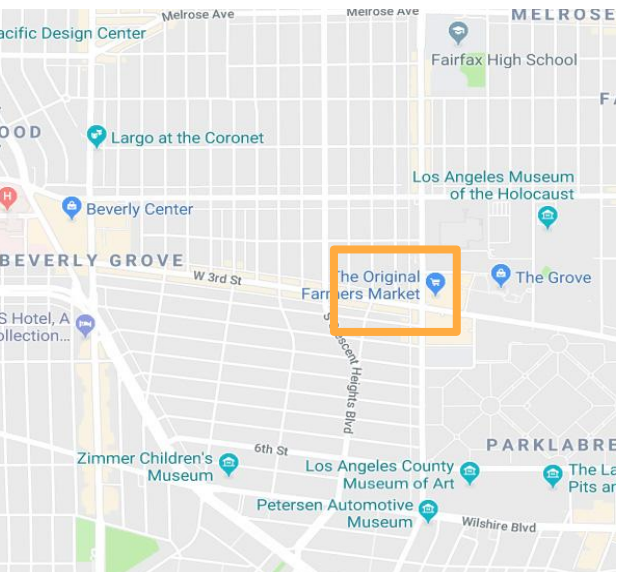
“The mechanical is not something that acts without purpose, but whose purpose can be forgotten.” - Jonathan Powers





A mechanism that lingers over never to be seen

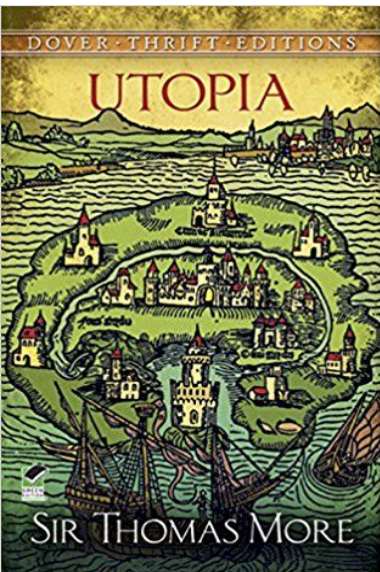






Are we any different?





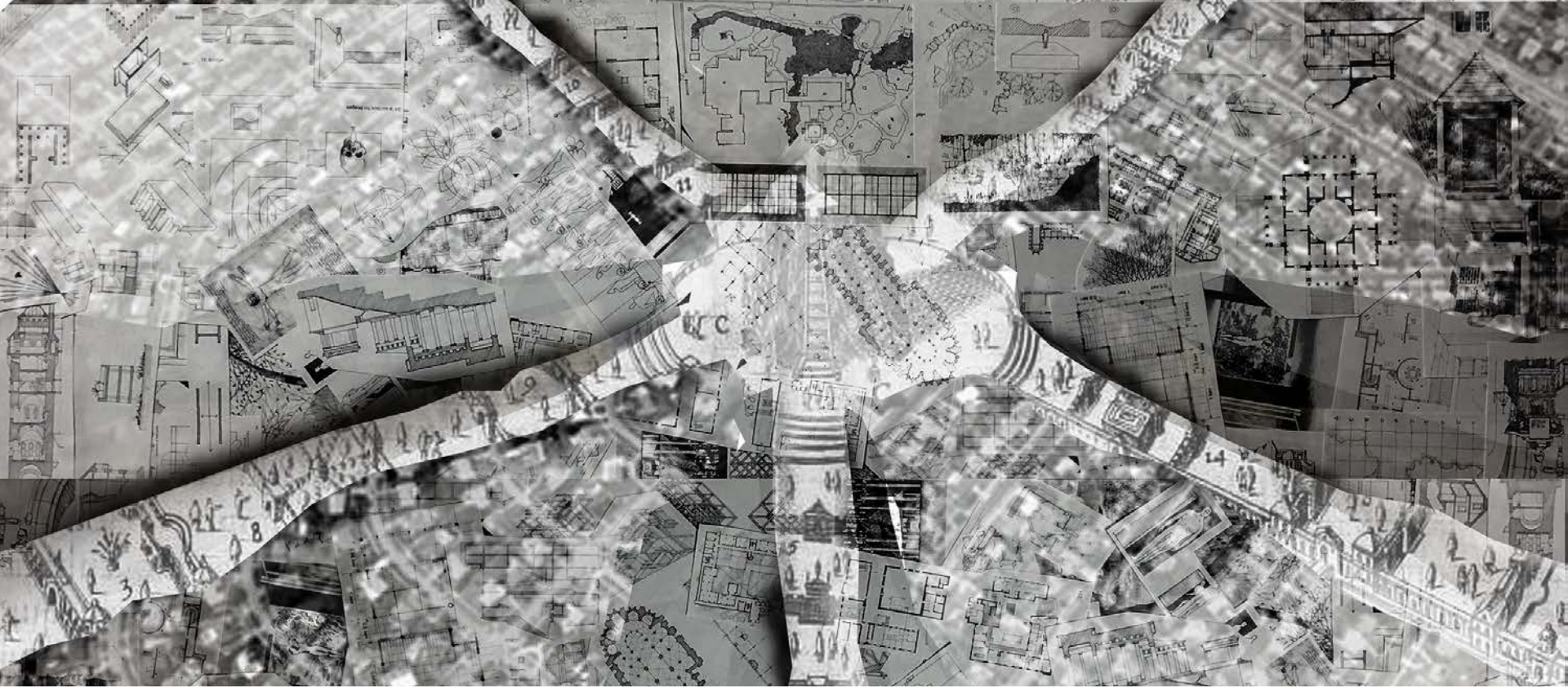


“no place”

A prism of knowledge and education which allows for the optimization of the single in order to propel the many.





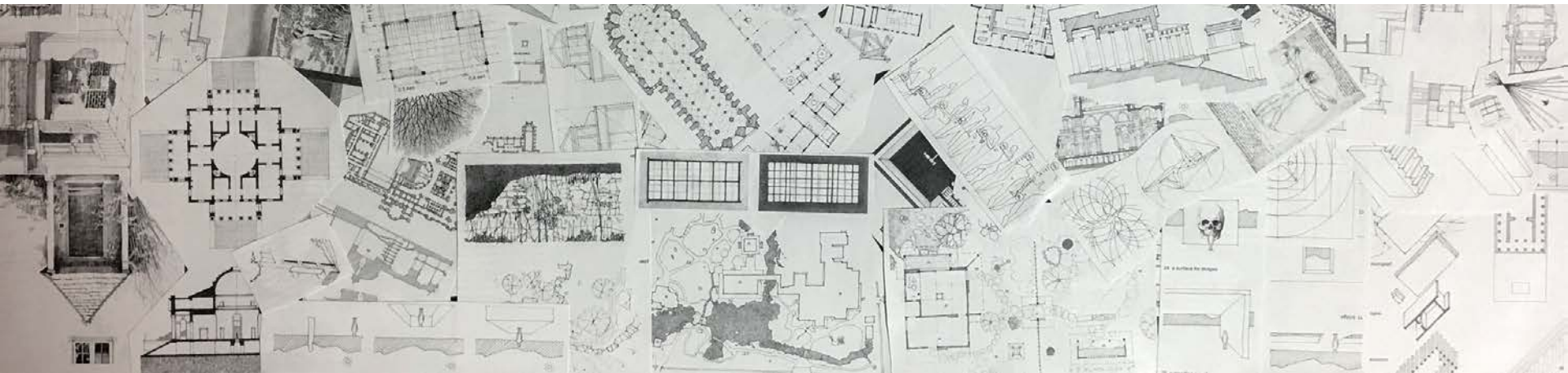
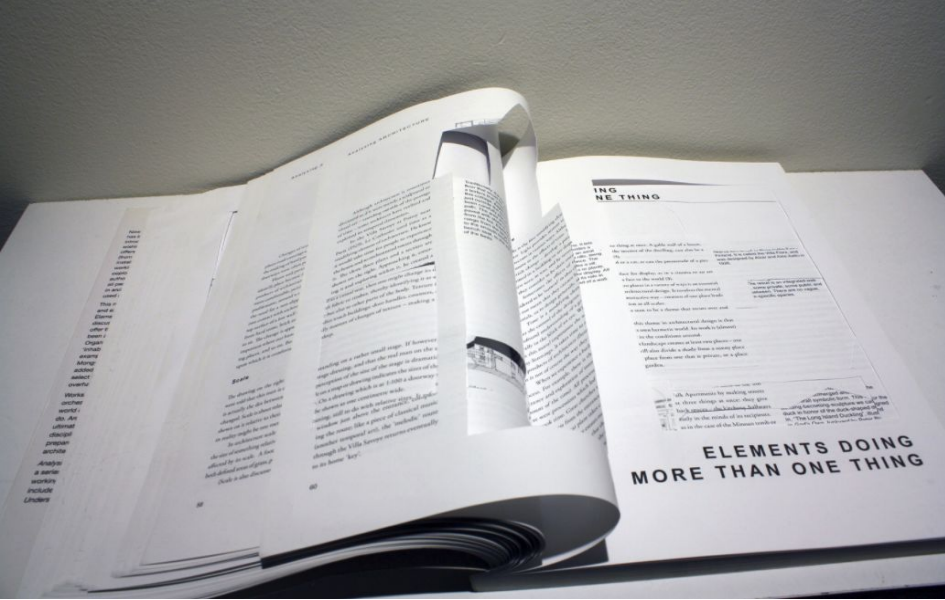


City of the Sun, a reductive utopia free from individuals



"The school is the manufactory of humanity." - Comenius

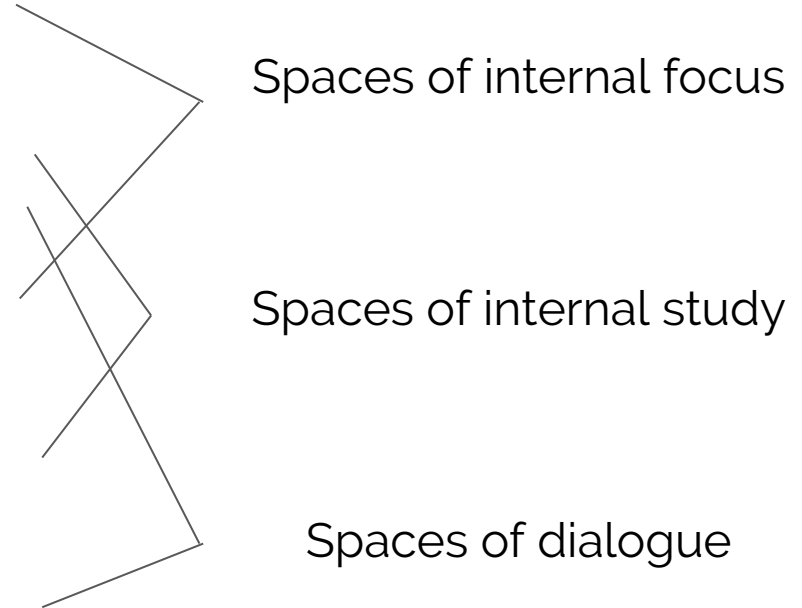




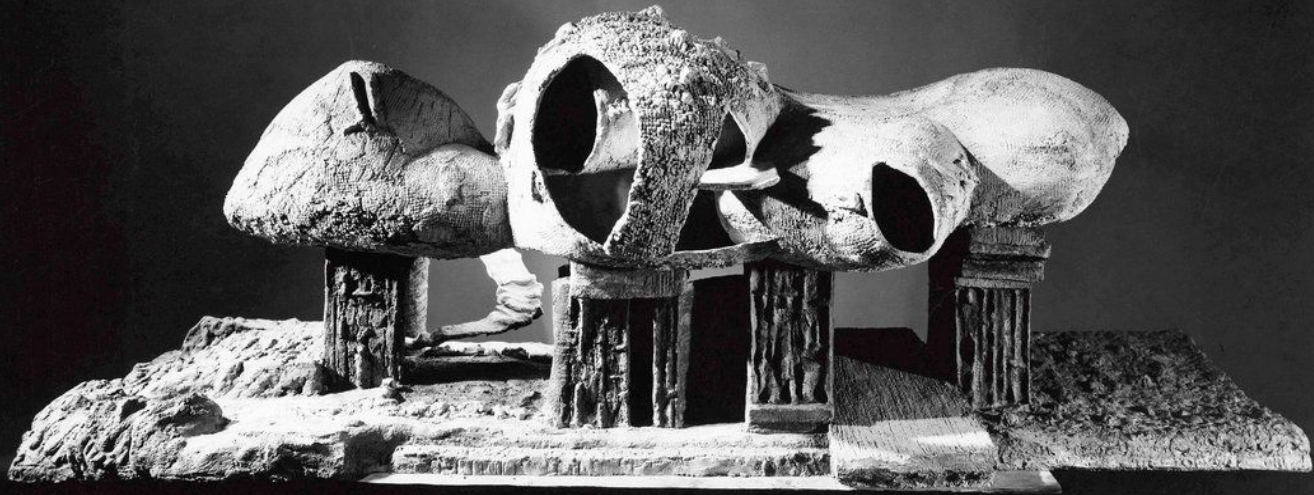


Building Program:

- ❑ Fitness Gym
- ❑ Fitness Studios
- ❑ Meditation Spaces
- ❑ Open Classroom Studio
- ❑ Lecture Breakout Rooms
- ❑ Cafe
- ❑ Library
- ❑ Admin. Offices
- ❑ Outdoor Patios

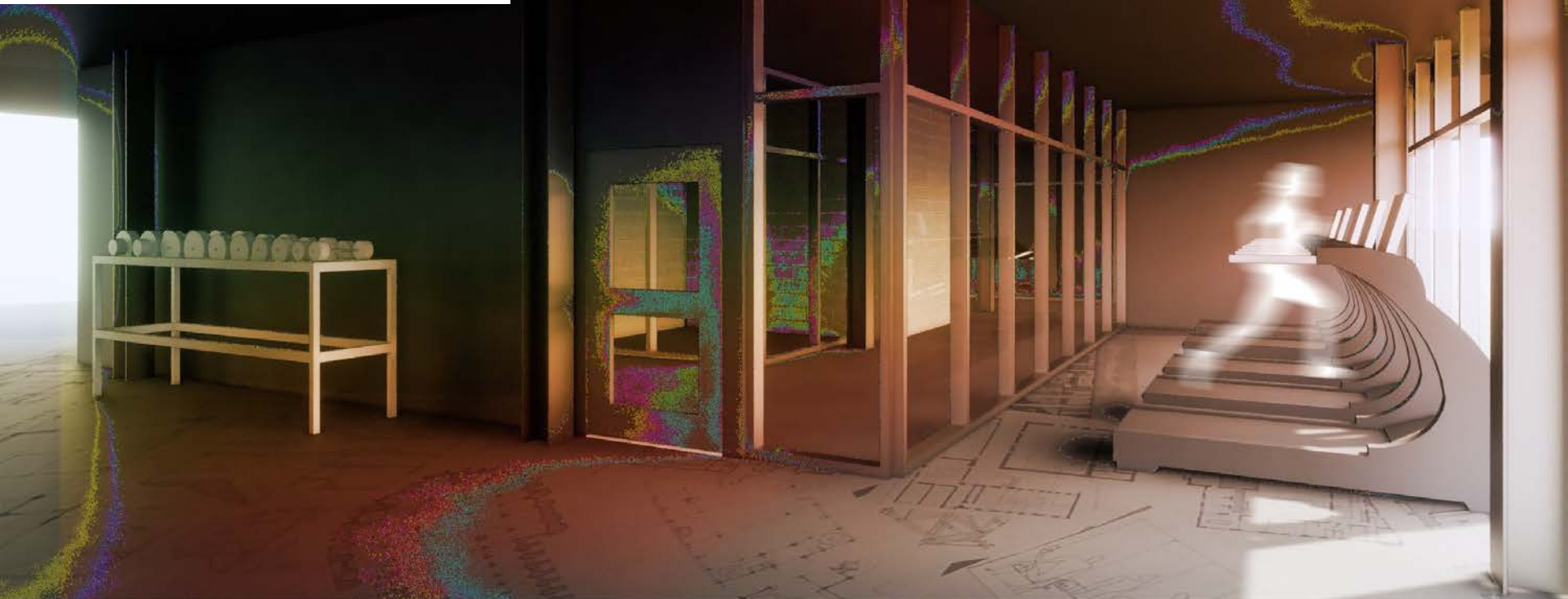
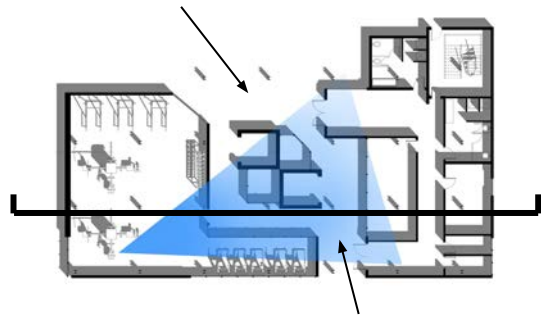


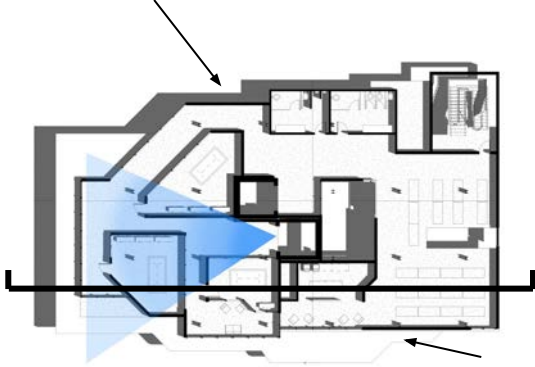
Kiesler's
Endless House



"They could have walked on it's curvilinear floors and imagined flying, sat on it's curved walls and felt the intimacy of their bodies with the flesh of the house."

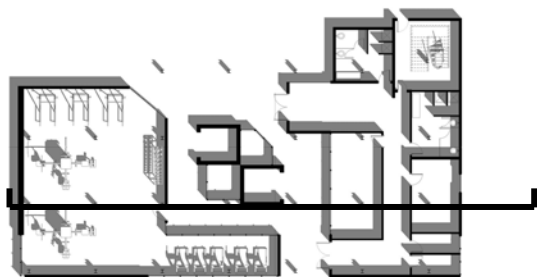








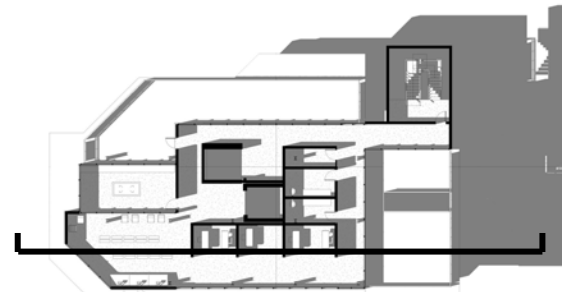




First Floor

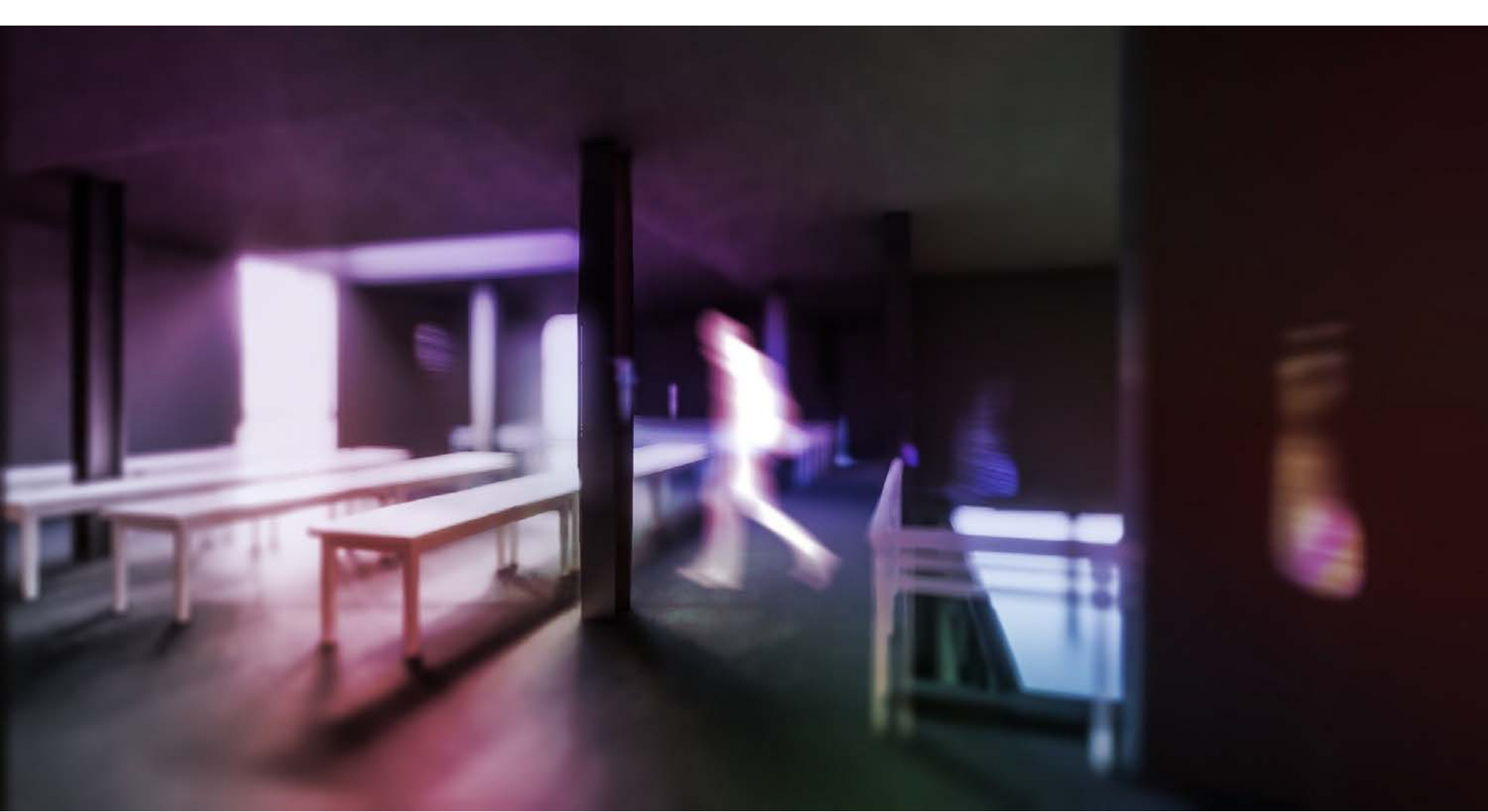


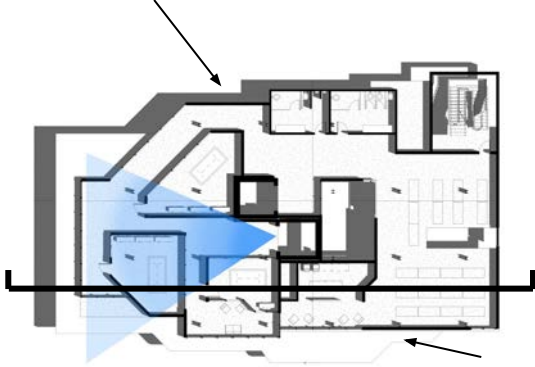
Second Floor



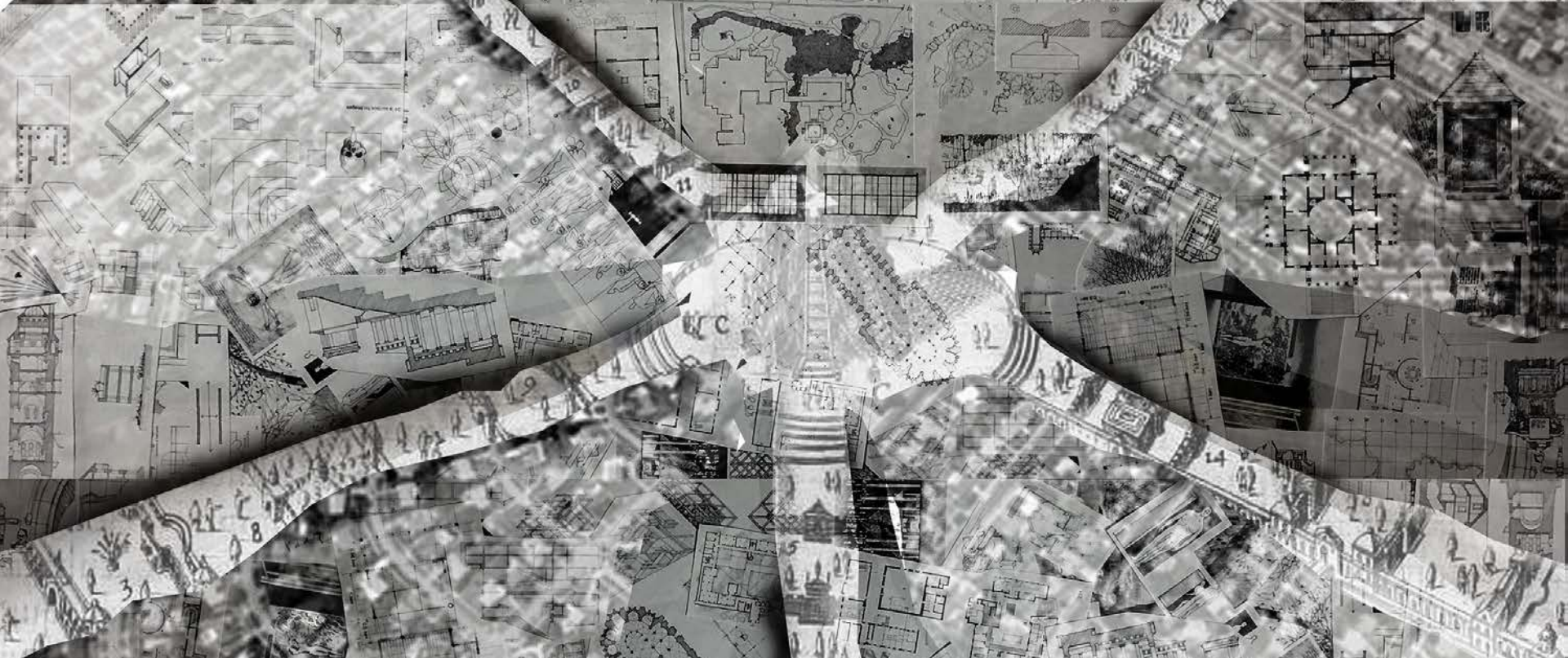
Third Floor











“The mechanical is not something that acts without purpose, but whose purpose can be forgotten.” - Jonathan Powers

