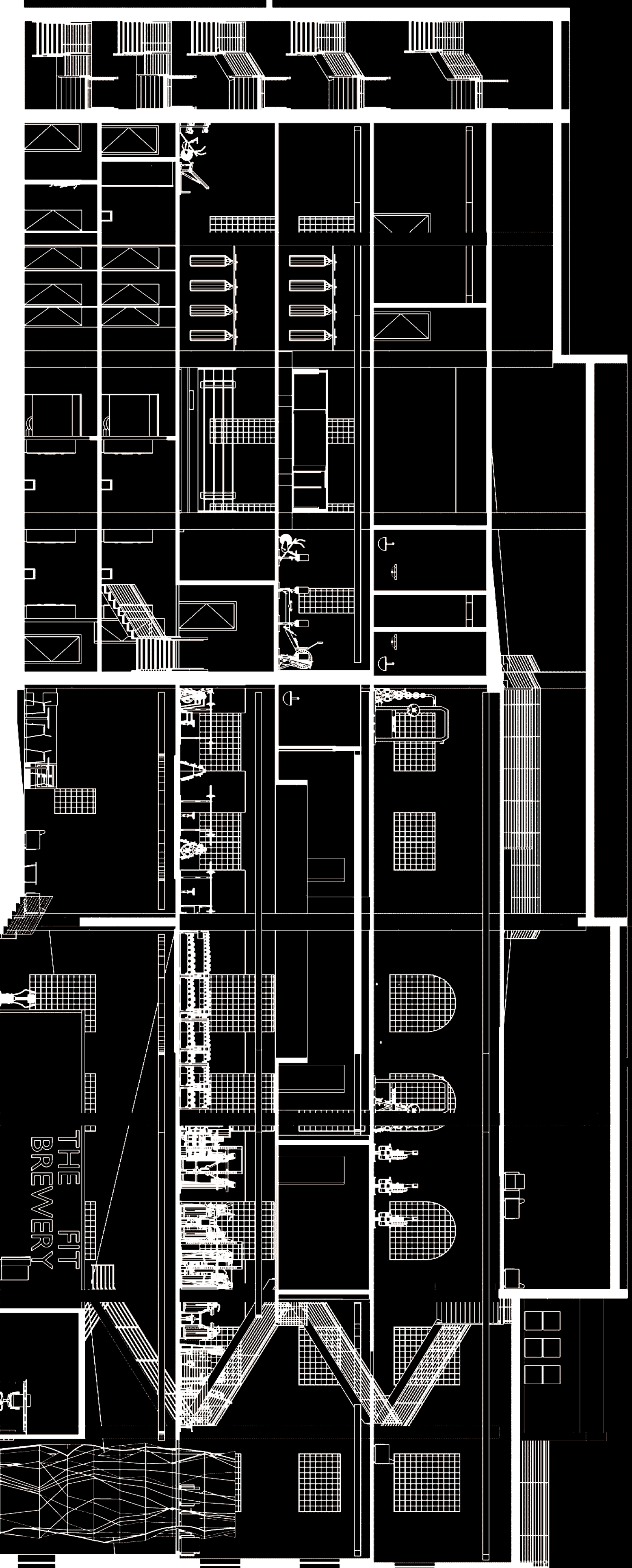


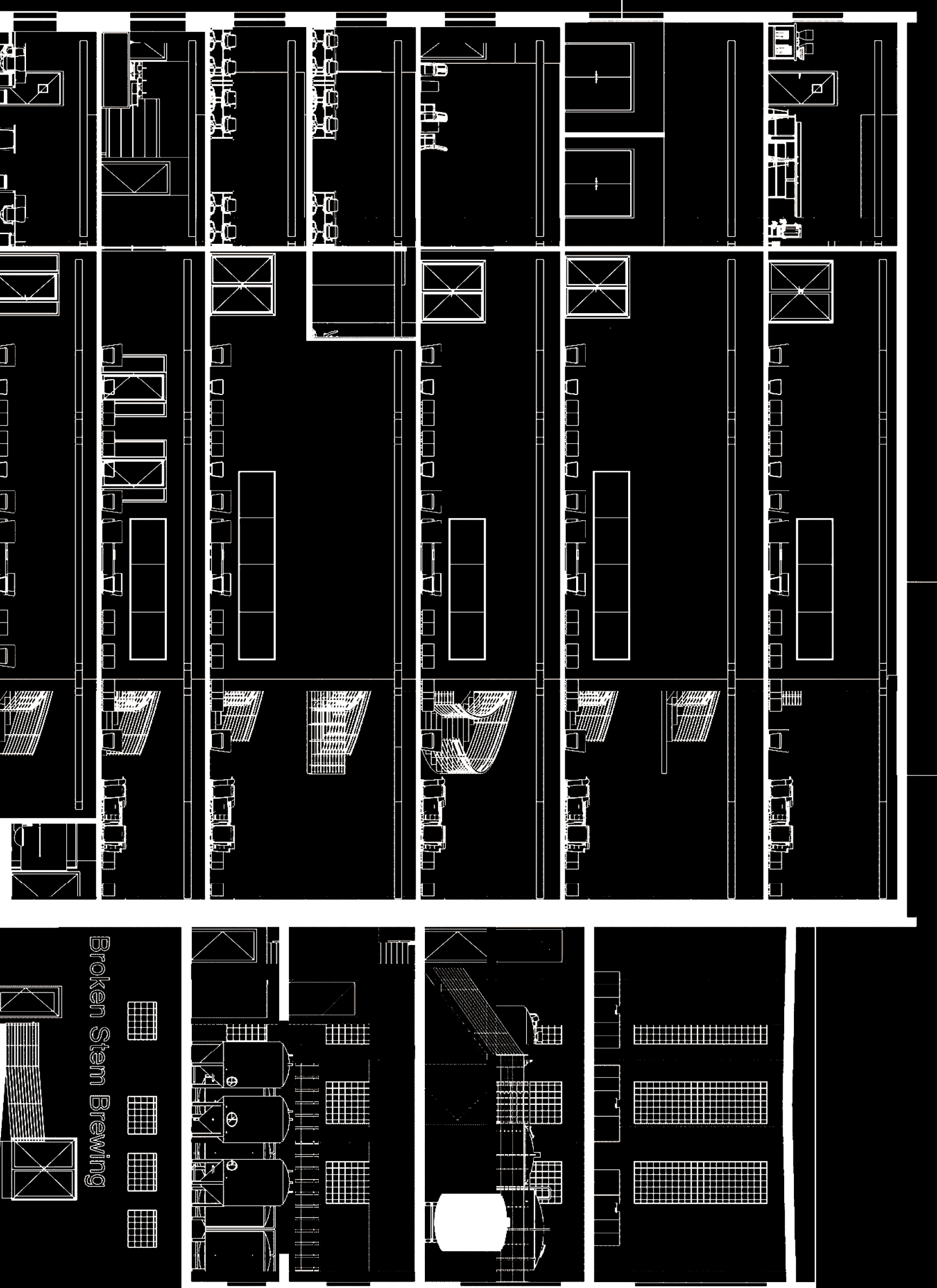
G R O W

- WALKING TRACK
- DANCE STUDIOS
- MIXED MARTIAL ARTS
- BOXING
- LOCKERS
- LOCKERS/LOUNGE



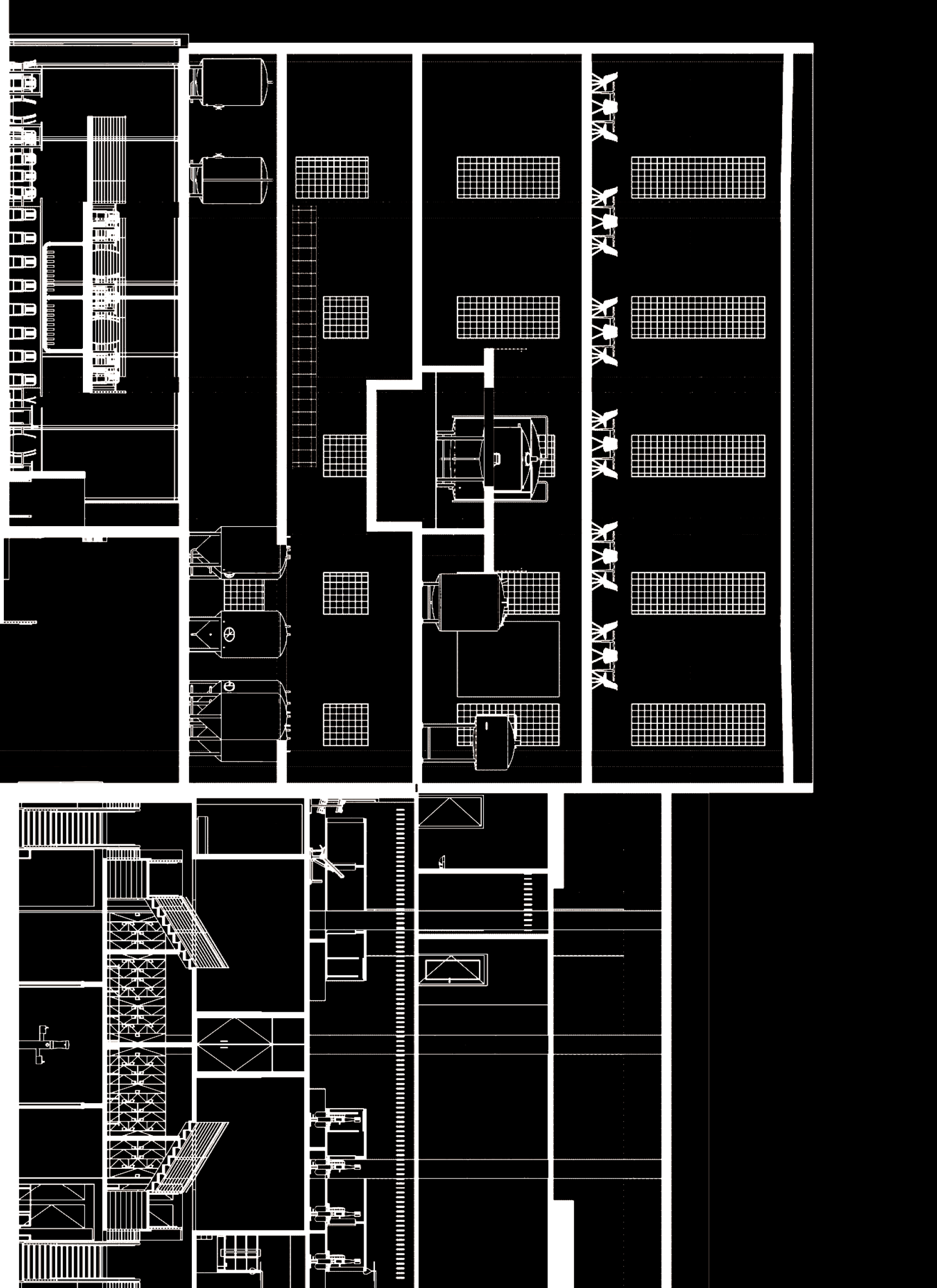
L E A R N

- 7F MAKE-A-BREW
- WALKING TRACK 6F WOODSHOP
- CROSSFIT 5F ART ROOMS
- FITNESS CLASSES 4F TECHNOLOGY LAB
- WEIGHTS 3F COMPUTER LAB
- 2F TEACH KITCHEN
- AEROBICS 1F ADMINISTRATION



P L A Y

- EVENT SPACE
- BREWING/STORAGE
- OFFICE/TOUR
- BREWING STORAGE
- SEATING
- TAPROOM/SEATING



The Fit Brewery sits in the old brew house and gift storage buildings of the complex. On the brew house side of building sits the basic fitness center with floors dedicated to aerobics, lifting weights, CrossFit gym, and dedicated spaces for group workout classes. On the gift storage side sits the intensity fitness portion. On the first two floors are the locker rooms for the whole complex continuing up are dedicated gyms to boxing, Mixed Martial Arts, and dance studios. Sitting above it all is a four lane walking track spanning roughly 300 feet that follows the existing floor plate weaving around structural columns and engaging slopes.

Community's Laboratory sits in the complex's laboratory and wort cooling buildings. Spanning seven tall floors with six floors dedicated to different functions to help grow and teach the surrounding community in different aspects from all ages. Connecting floor-to-floor is a large spiraling staircase with floor-to-ceiling glass walls allowing for learning to happen both hands on and through observation. Additionally, on the outside walls of the circulation on each floor house breakout spaces with screens and whiteboards, allowing for numerous amounts of alternative classes.

Broken Stem Brewing sits in the new brew house building. The first two floors are open to the general public with the sixth floor being a large open event space, floors three, four, five and its corresponding mezzanines house the brewery. To allow for more efficient transferring of beer through the tanks the start of the brewing process is at the top level and ends at the bottom floor where the aging and serving tanks sit. Additionally, on floors four and five sits the offices for both the brewers and general employees.

