

**A New Adventure:** Encouraging people to go out to discover American history through architecture and the environment that surrounds it.

**“How can architectural building draw people inside; in order to promote historical learning for all ages.”**

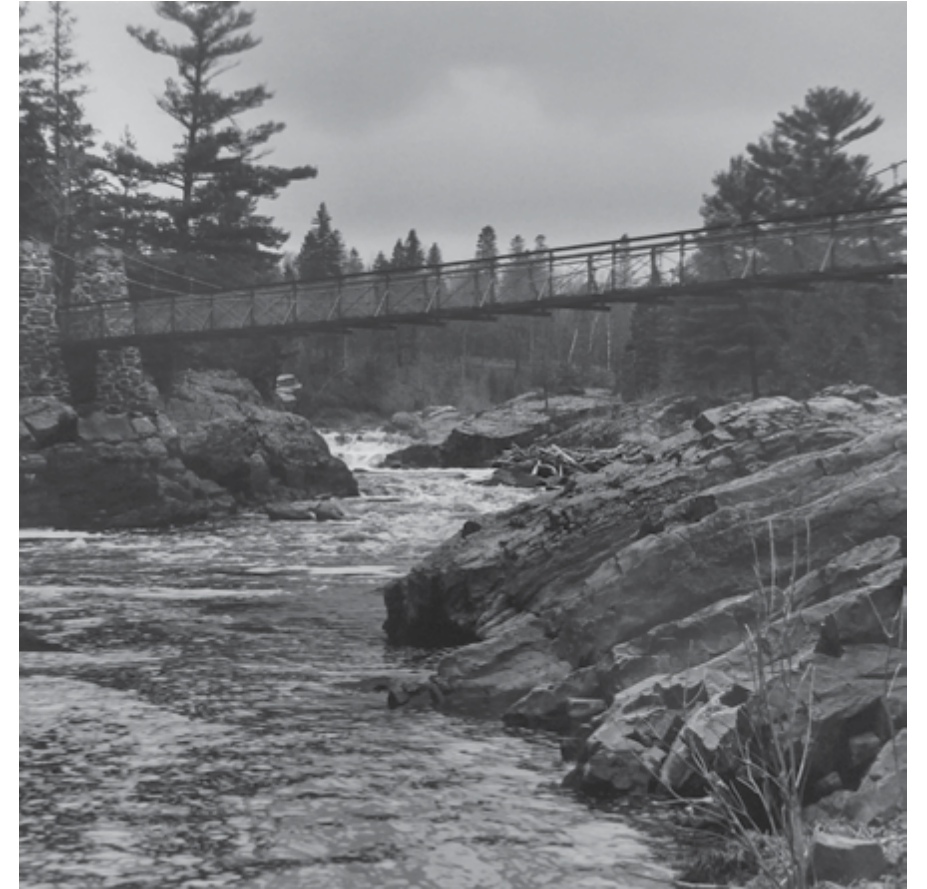
**What comes to mind when we think of a Minnesota state park?**



**Gooseberry Falls State Park  
Two Harbors, MN**



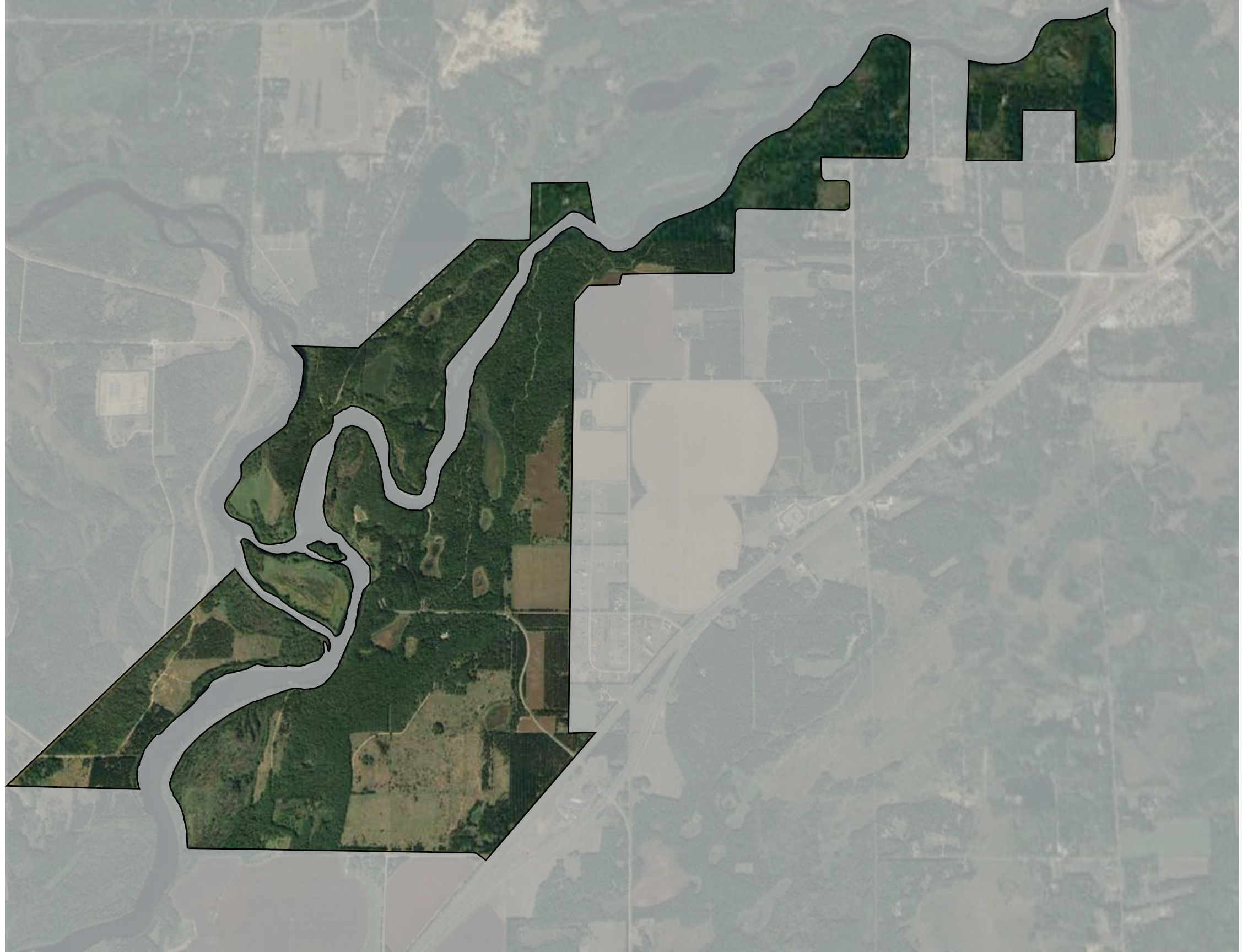
**Banning State Park  
Sandstone, MN**

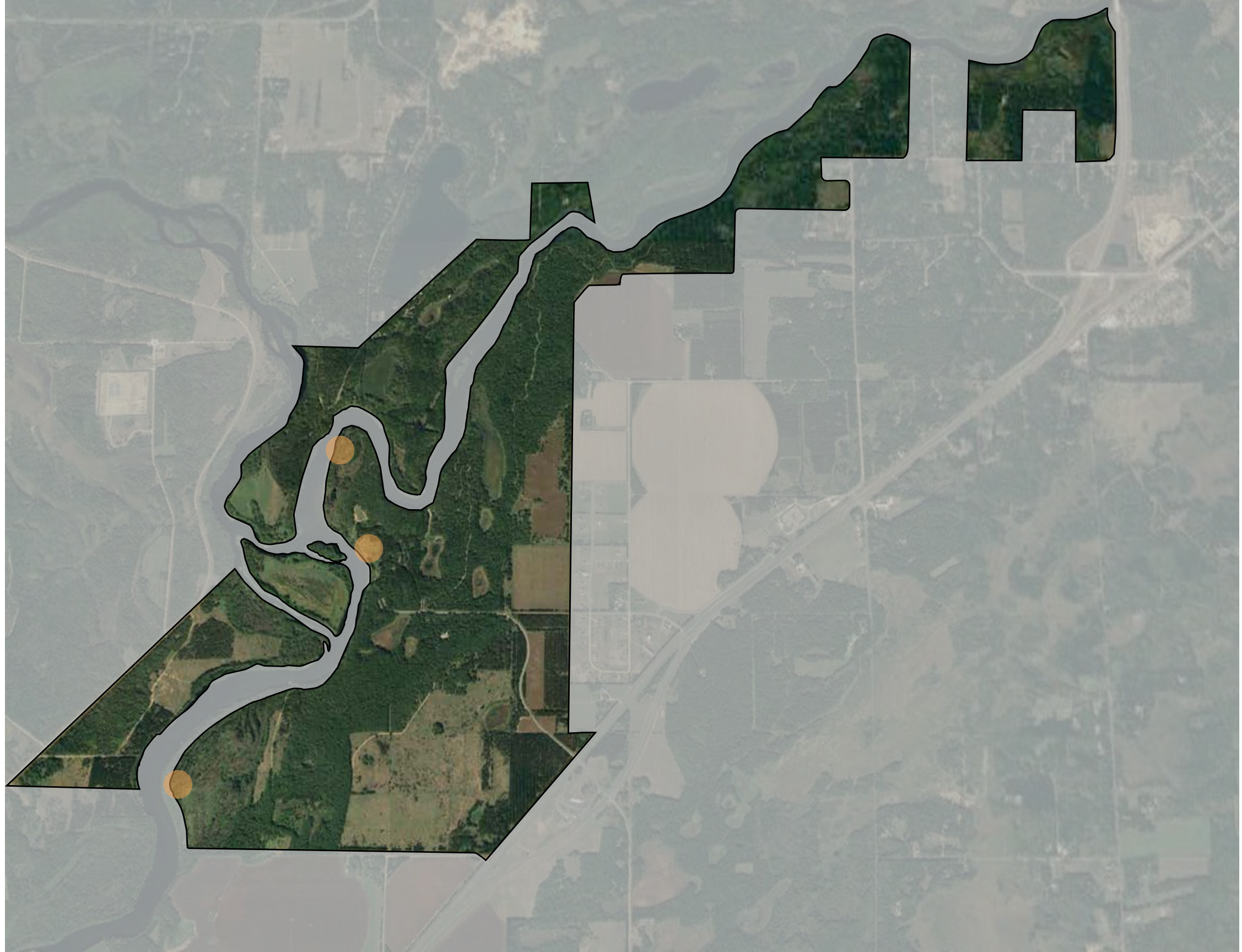


**Jay Cooke State Park  
Carlton, MN**



**Crow Wing State Park  
Brainerd, MN**







**The Battle of 1768  
Between the Dakota and Ojibwe Tribes**





**The Battle of 1768  
Between the Dakota and Ojibwe Tribes**



**The Red River Ox Cart Path and Fur  
Trading Industry**



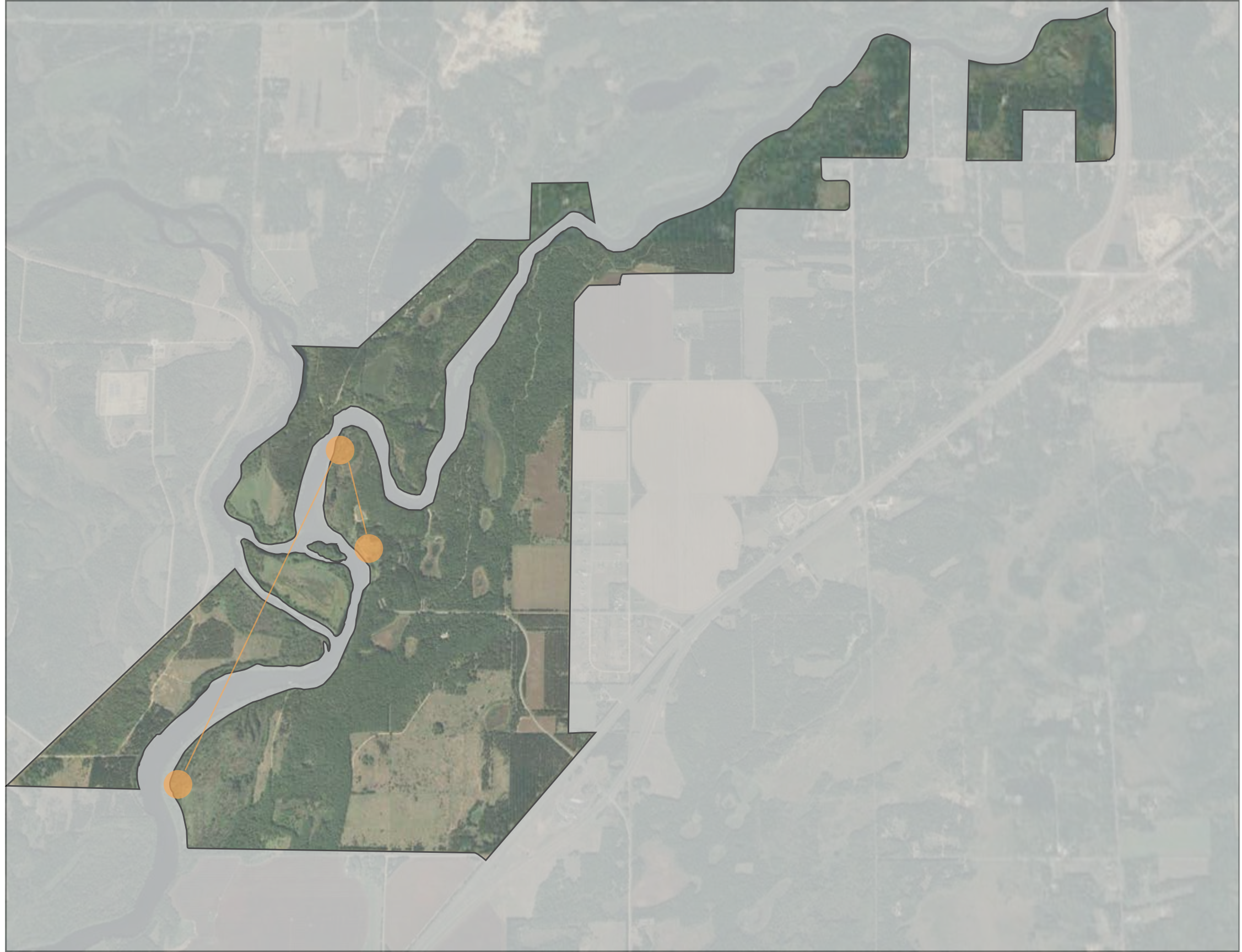
**The Battle of 1768  
Between the Dakota and Ojibwe Tribes**

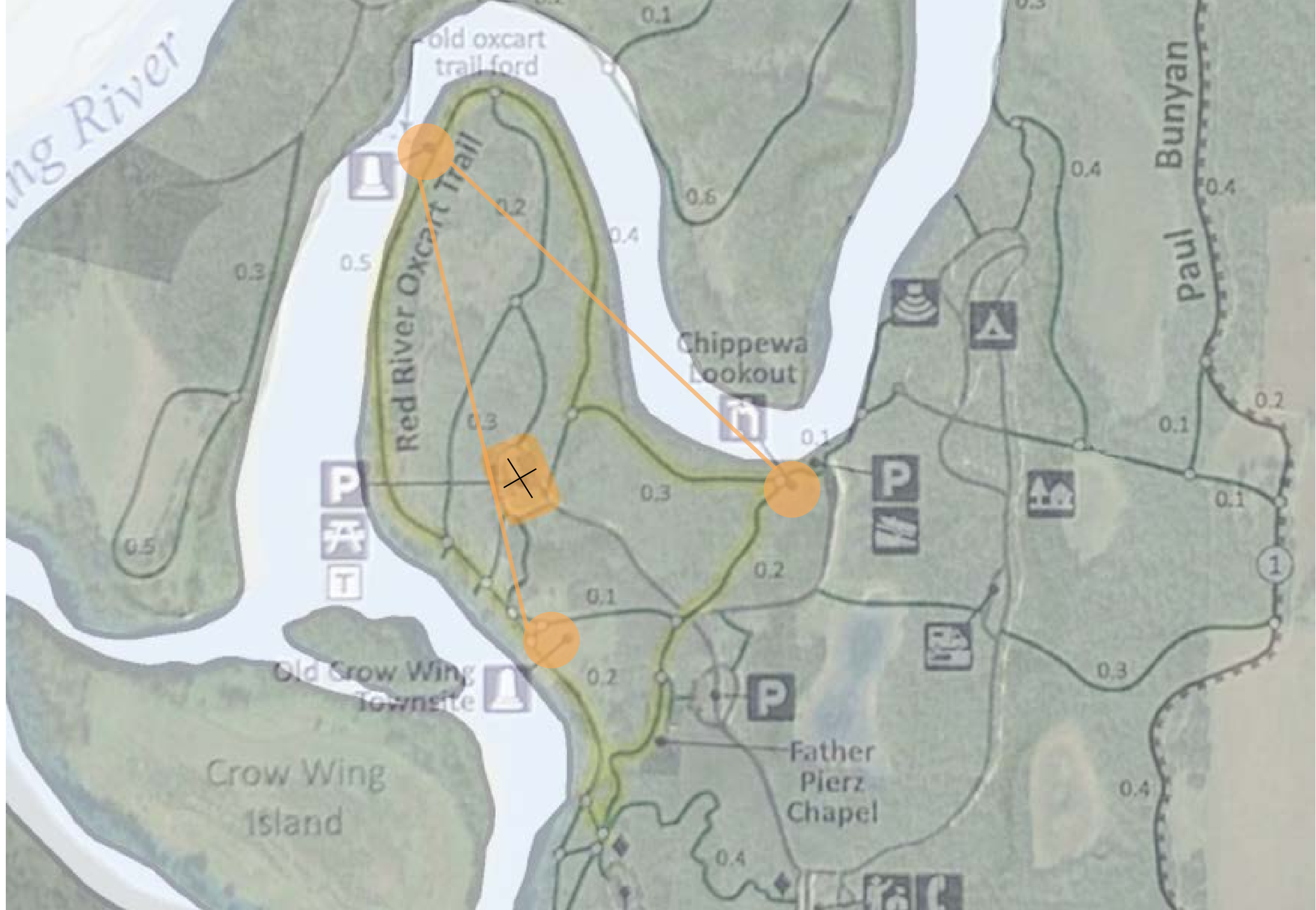


**The Red River Ox Cart Path and Fur  
Trading Industry**



**The Town of Old Crow Wing**







North



West



East

South



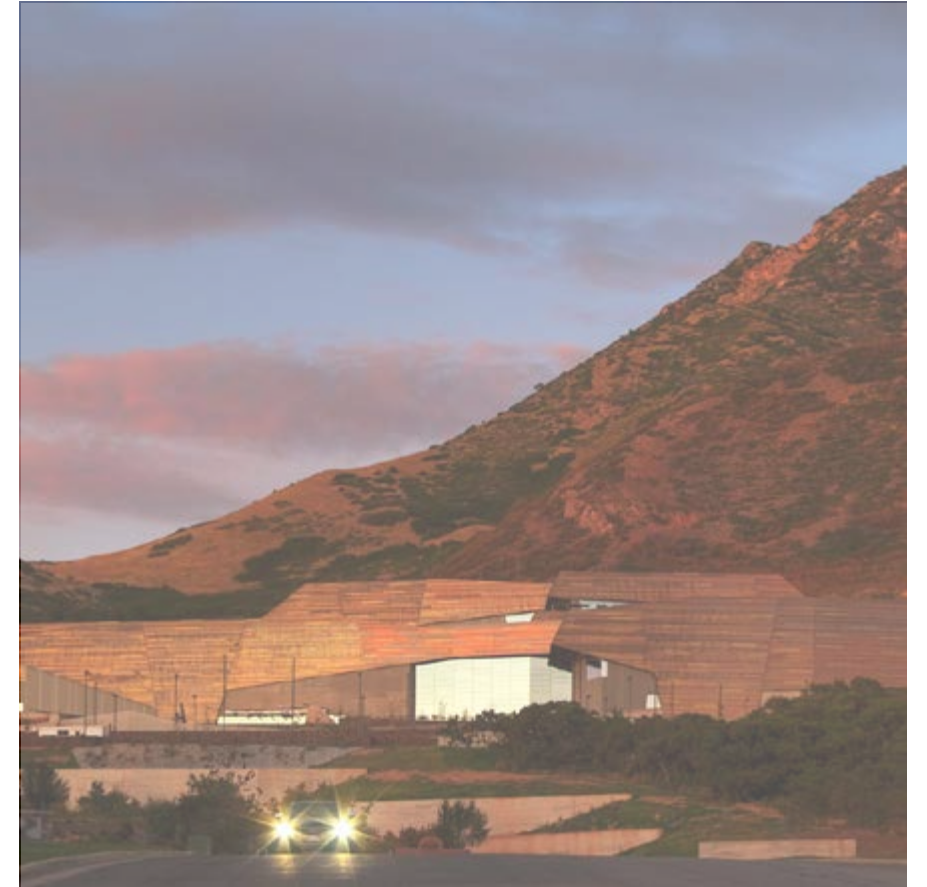
## Case Studies



**Craig Thomas**  
- **Discovery and Visitor Center**  
Grand Teton National Park  
Moose, Wyoming - United States  
Bohlin Cywinski Jackson



**Discovery Centre**  
Mont - Tremblant National Park  
Monroe Lake, QC. - Canada  
Smith Vigeant Architects



**The Rio Tinto Center**  
- **Natural Museum of History of Utah**  
Foothills of the Wasatch Mountain Range  
Salt Lake City, Utah - United States  
GSBS Architects/Ennead Architects

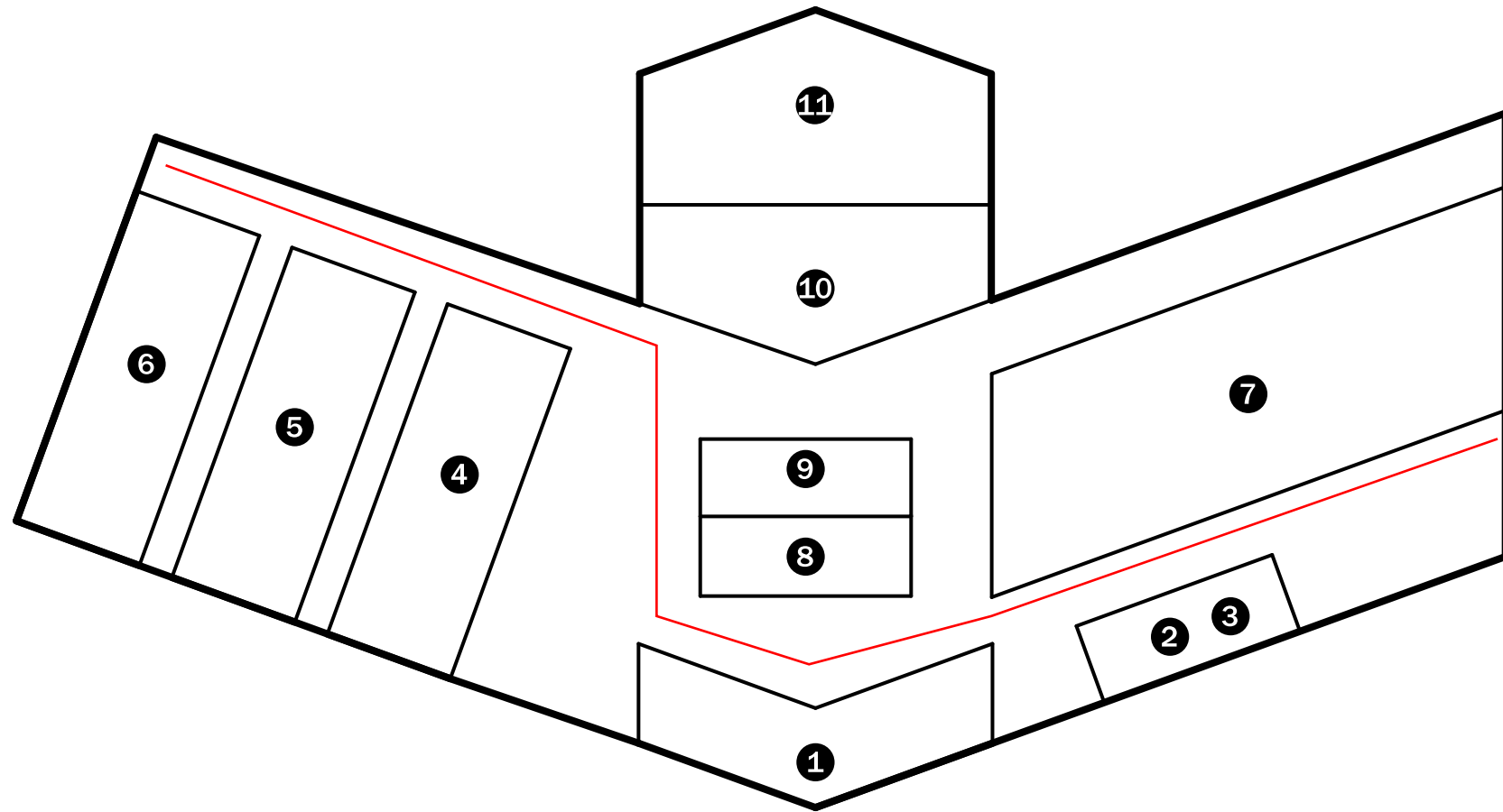
## Theoretical Premise Results

Learning to Teach for Historical Understanding: Preservice Teachers at a Hands-on Museum  
By: Susan Wunder

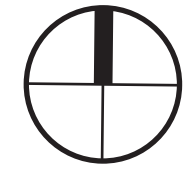
- 1) Create spaces that all children can play in and be apart of.
- 2) Make sure that the different scenes involve real or replicated artifacts.
- 3) Have a period where the students can all come together and talk about the different topics

Museums of Tomorrow: 8 Things to Know About Cultural Institutions in Today's Society  
Gensler Research

1. Crafting Personal Journeys
2. Entertainment Based Experiences
3. Need for Flexibility
4. Seeking Community Engagement
5. The Blurring of Boundaries
6. Tourist Needs vs Local Needs
7. Embracing the Urban Scene
8. Online vs Offline Presence



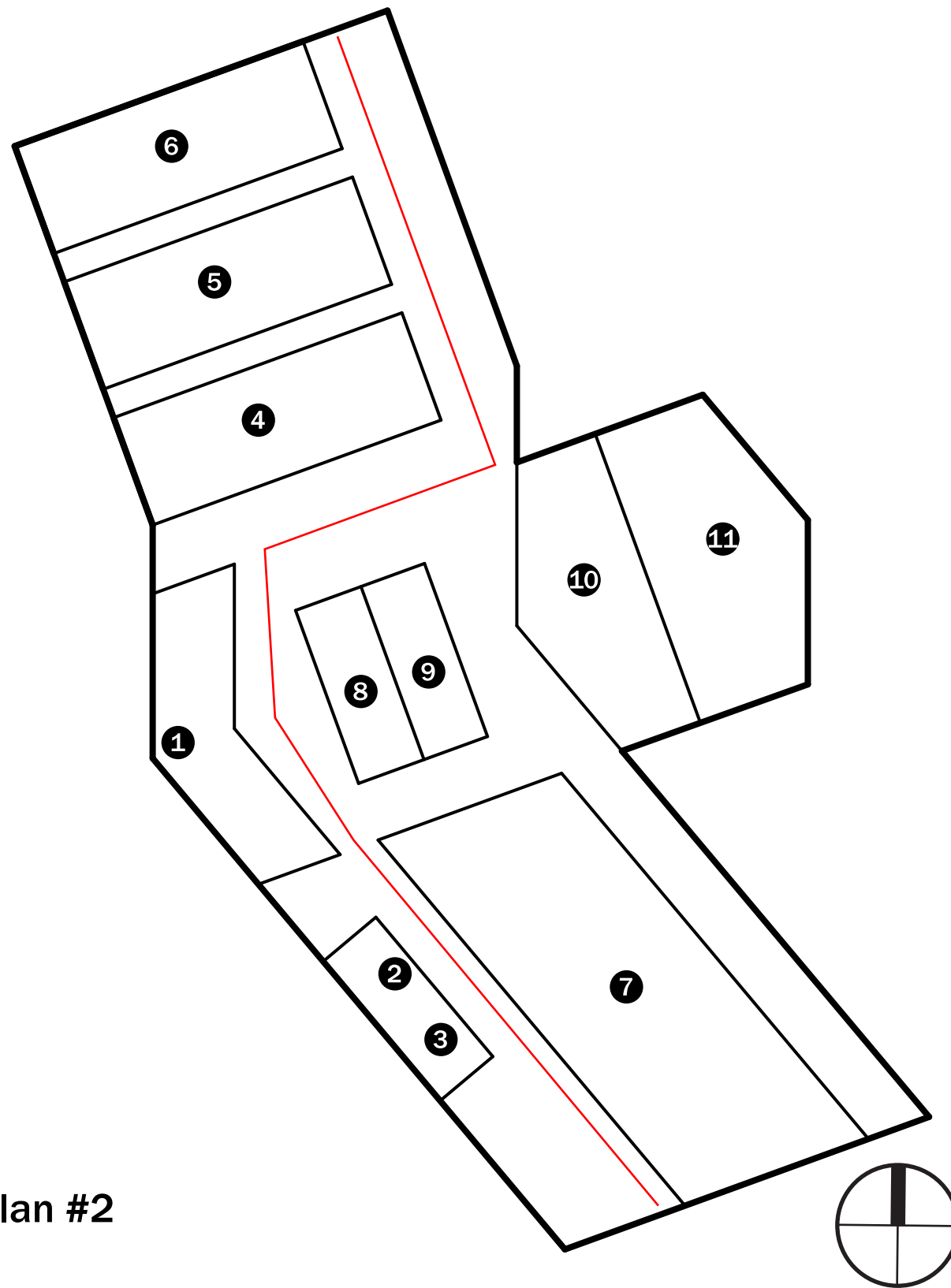
- ① ENTRY
- ② VISITORS DESK
- ③ RETAIL STORE
- ④ OJIBWE EXHIBIT
- ⑤ RED RIVER TRAIL EXHIBIT
- ⑥ OLD CROW WING EXHIBIT
- ⑦ INTERPRATIVE CENTER
- ⑧ WOMANS RESTROOM
- ⑨ MENS RESTROOM
- ⑩ MECHANICAL ROOM
- ⑪ EXHIBIT STORAGE



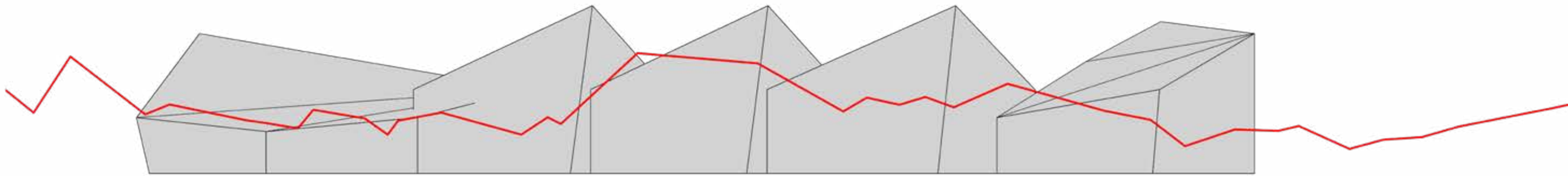
Plan #1



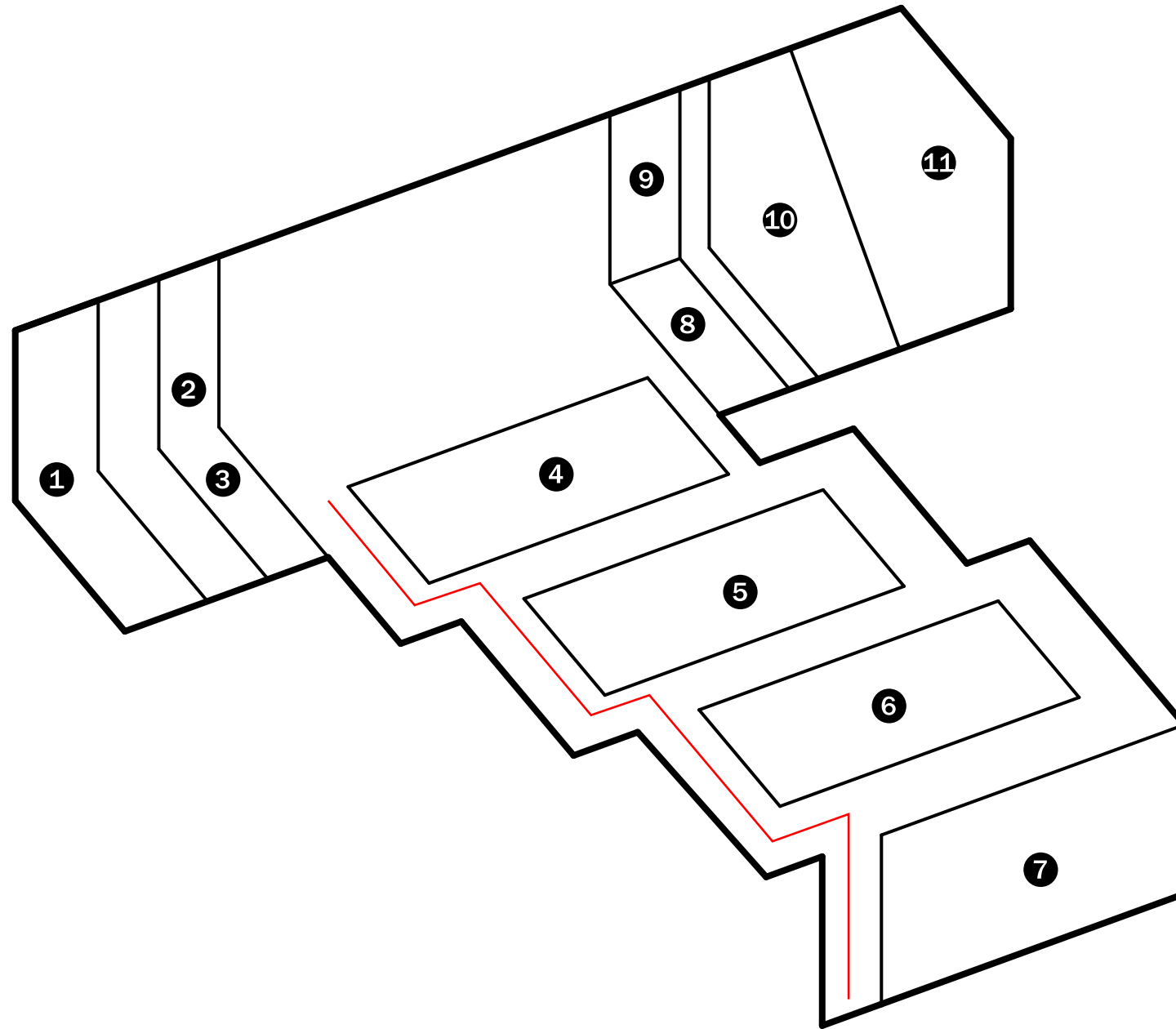
Plan #2



- ① ENTRY
- ② VISITORS DESK
- ③ RETAIL STORE
- ④ OJIBWE EXHIBIT
- ⑤ RED RIVER TRAIL EXHIBIT
- ⑥ OLD CROW WING EXHIBIT
- ⑦ INTERPRATIVE CENTER
- ⑧ WOMANS RESTROOM
- ⑨ MENS RESTROOM
- ⑩ MECHANICAL ROOM
- ⑪ EXHIBIT STORAGE

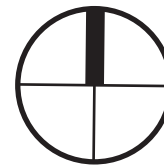


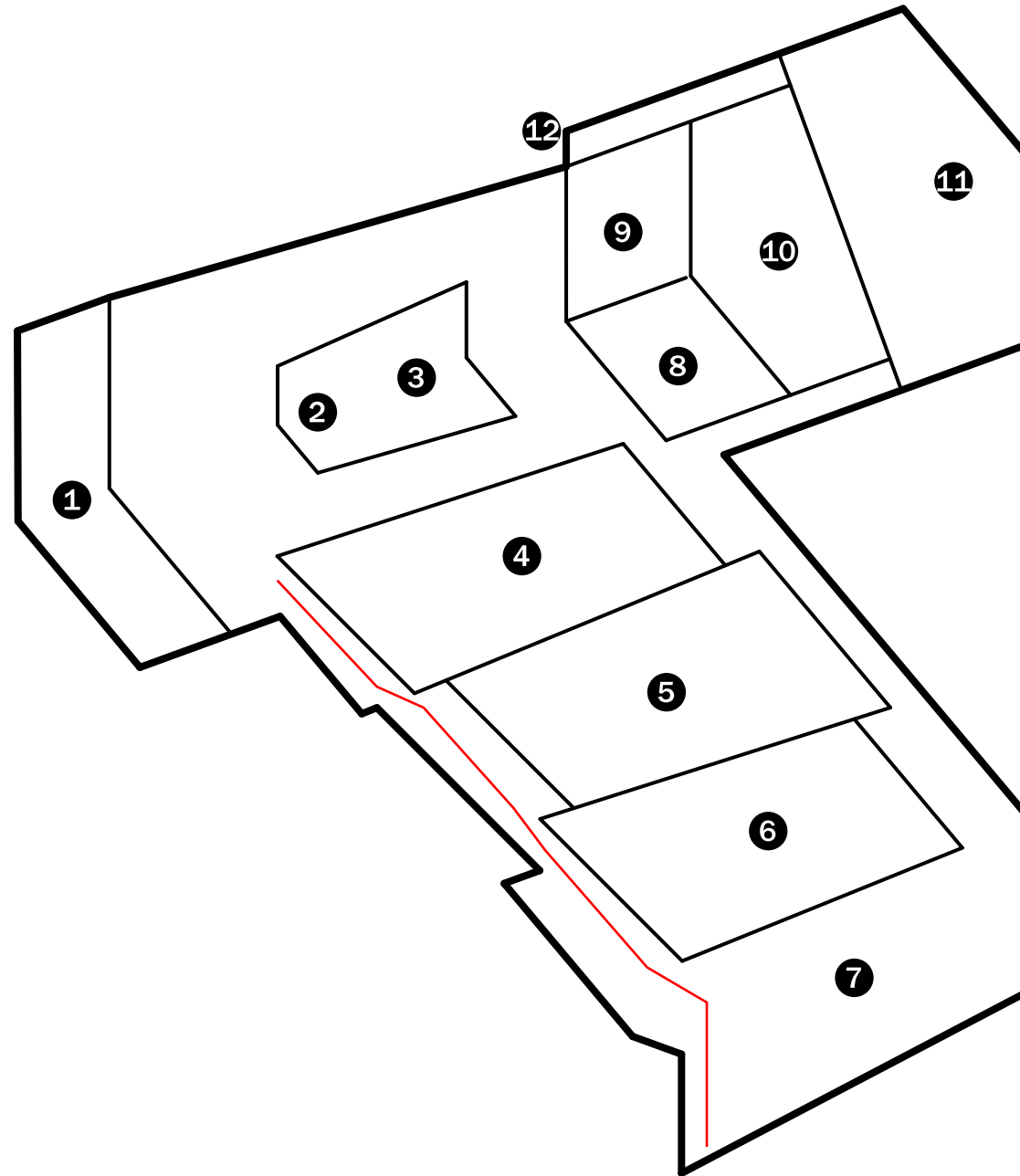
**Form #1**



- ① ENTRY
- ② VISITORS DESK
- ③ RETAIL STORE
- ④ OJIBWE EXHIBIT
- ⑤ RED RIVER TRAIL EXHIBIT
- ⑥ OLD CROW WING EXHIBIT
- ⑦ INTERPRATIVE CENTER
- ⑧ WOMANS RESTROOM
- ⑨ MENS RESTROOM
- ⑩ MECHANICAL ROOM
- ⑪ EXHIBIT STORAGE

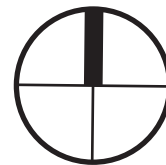
Plan #3

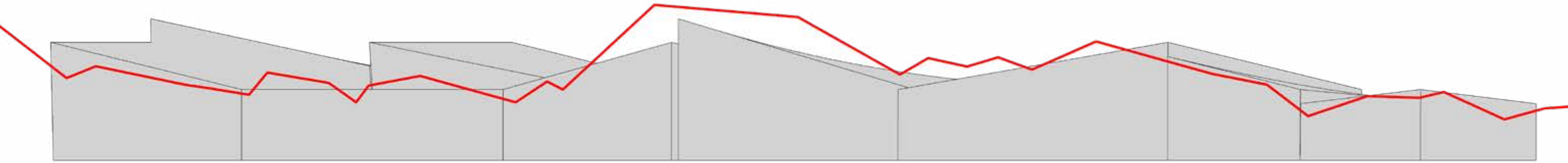




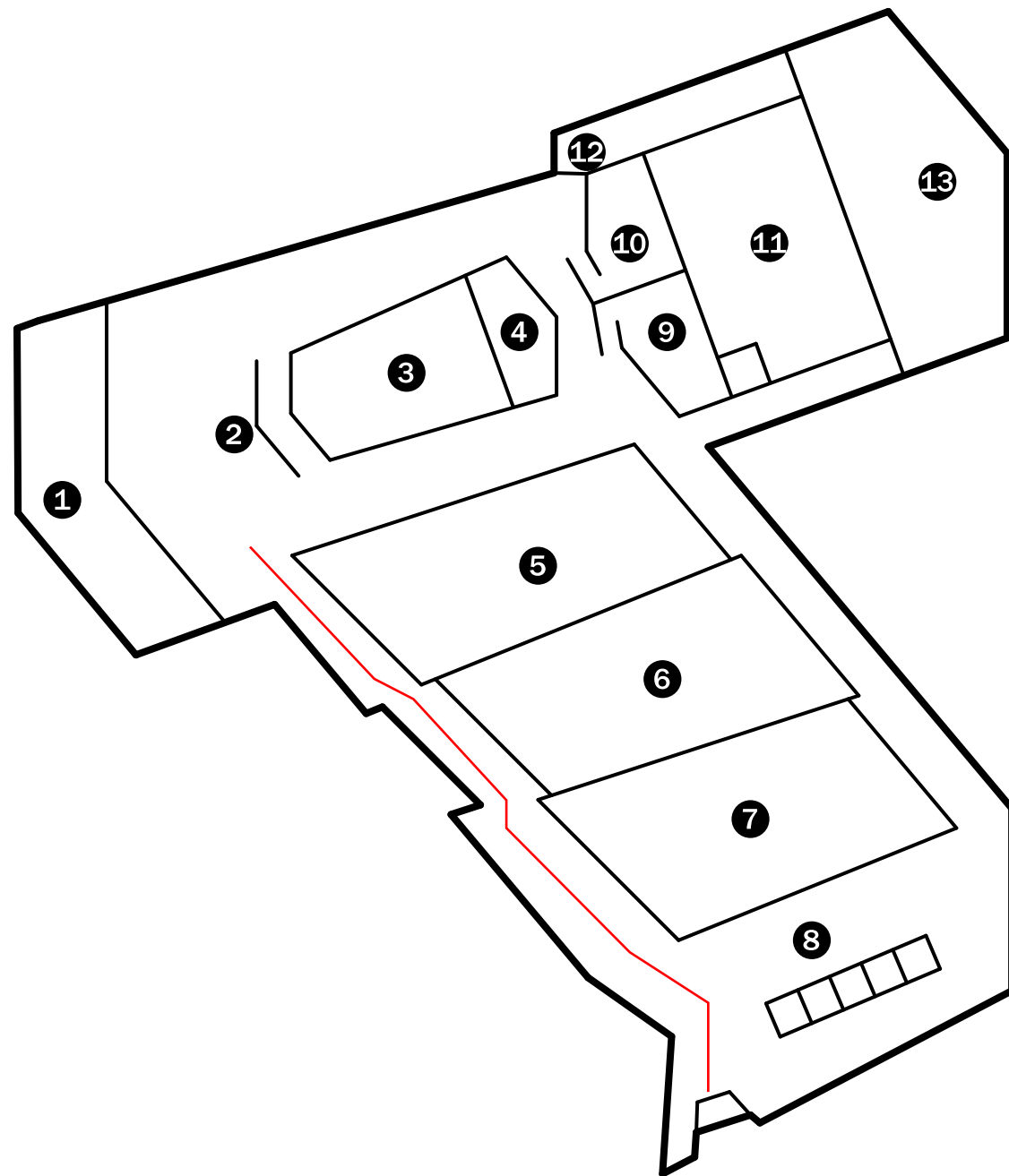
- ① ENTRY
- ② VISITORS DESK
- ③ RETAIL STORE
- ④ OJIBWE EXHIBIT
- ⑤ RED RIVER TRAIL EXHIBIT
- ⑥ OLD CROW WING EXHIBIT
- ⑦ INTERPRATIVE CENTER
- ⑧ WOMANS RESTROOM
- ⑨ MENS RESTROOM
- ⑩ MECHANICAL ROOM
- ⑪ EXHIBIT STORAGE
- ⑫ LOADING DOCK

Plan #4





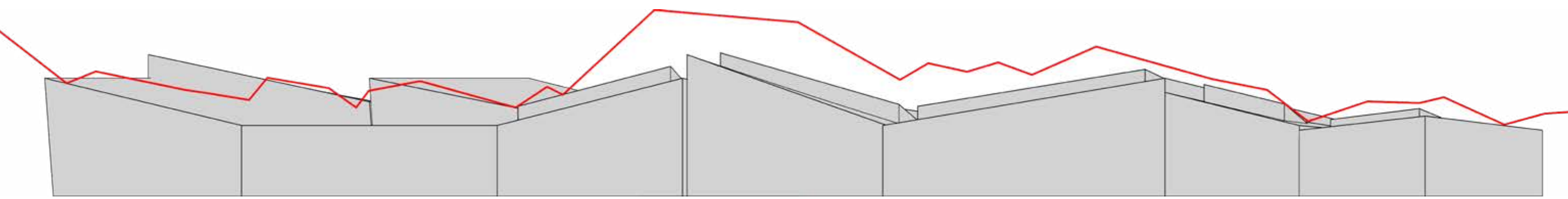
Form #2



- ① ENTRY
- ② VISITORS DESK
- ③ RETAIL STORE
- ④ RETAIL STORAGE
- ⑤ OJIBWE EXHIBIT
- ⑥ RED RIVER TRAIL EXHIBIT
- ⑦ OLD CROW WING EXHIBIT
- ⑧ INTERPRATIVE CENTER
- ⑨ WOMANS RESTROOM
- ⑩ MENS RESTROOM
- ⑪ MECHANICAL ROOM
- ⑫ EXHIBIT STORAGE
- ⑬ LOADING DOCK

Plan #5

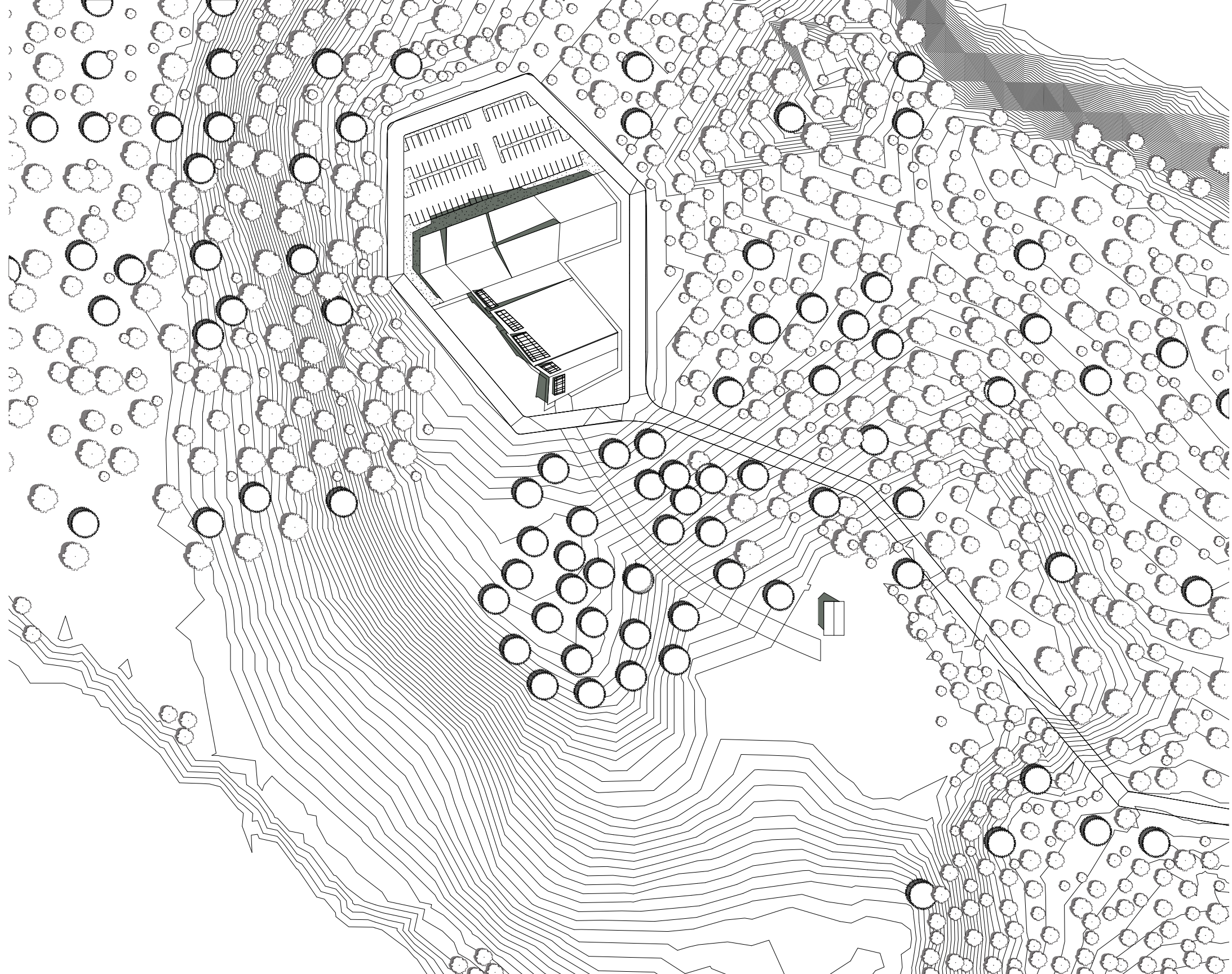




Form #3



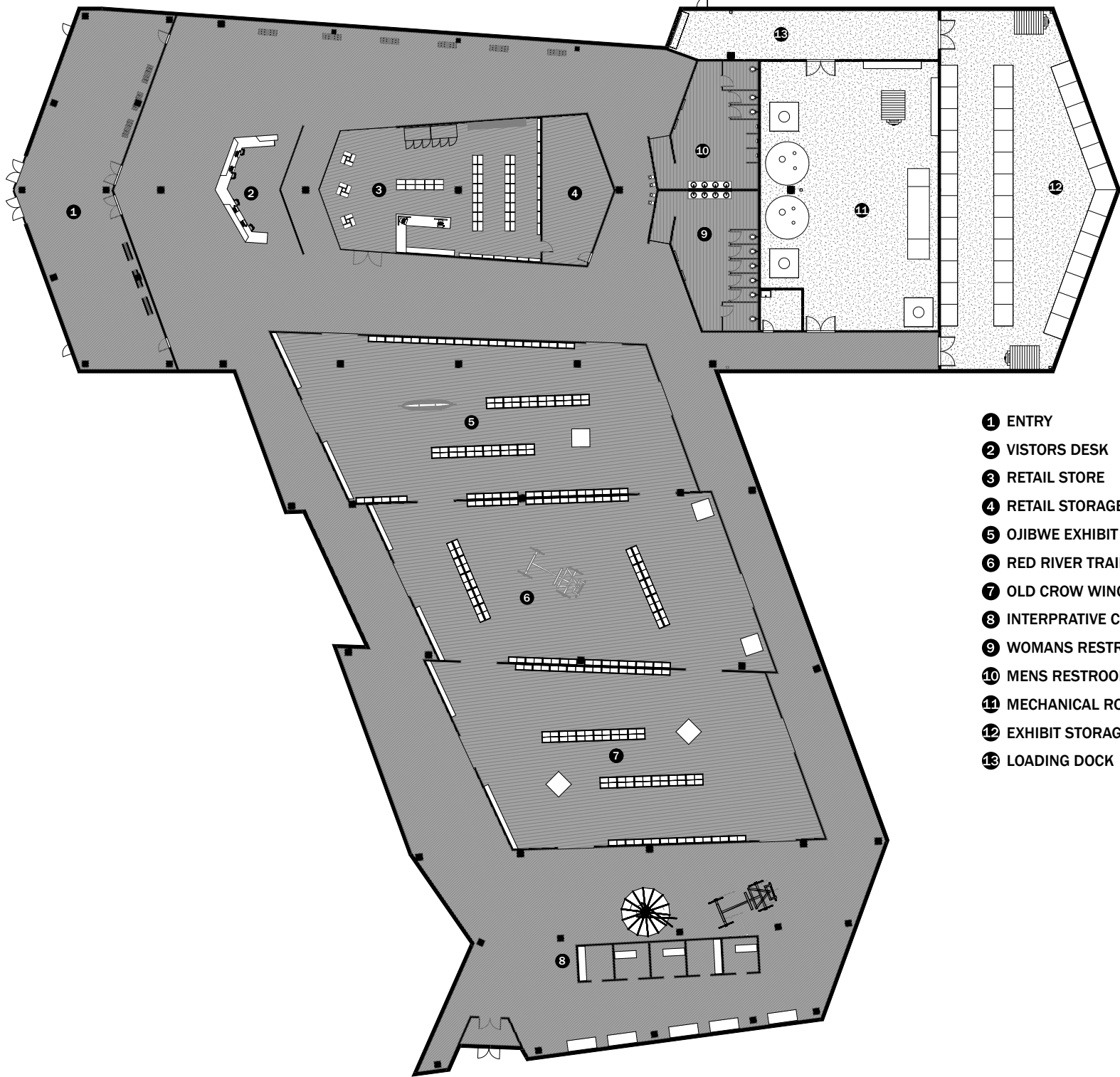






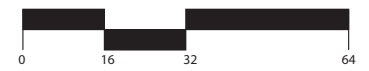






- ① ENTRY
- ② VISITORS DESK
- ③ RETAIL STORE
- ④ RETAIL STORAGE
- ⑤ OJIBWE EXHIBIT
- ⑥ RED RIVER TRAIL EXHIBIT
- ⑦ OLD CROW WING EXHIBIT
- ⑧ INTERPRATIVE CENTER
- ⑨ WOMANS RESTROOM
- ⑩ MENS RESTROOM
- ⑪ MECHANICAL ROOM
- ⑫ EXHIBIT STORAGE
- ⑬ LOADING DOCK

FIRST FLOOR PLAN  
 SCALE: 1' = 1/16"







The University of Georgia  
The University of Georgia  
The University of Georgia



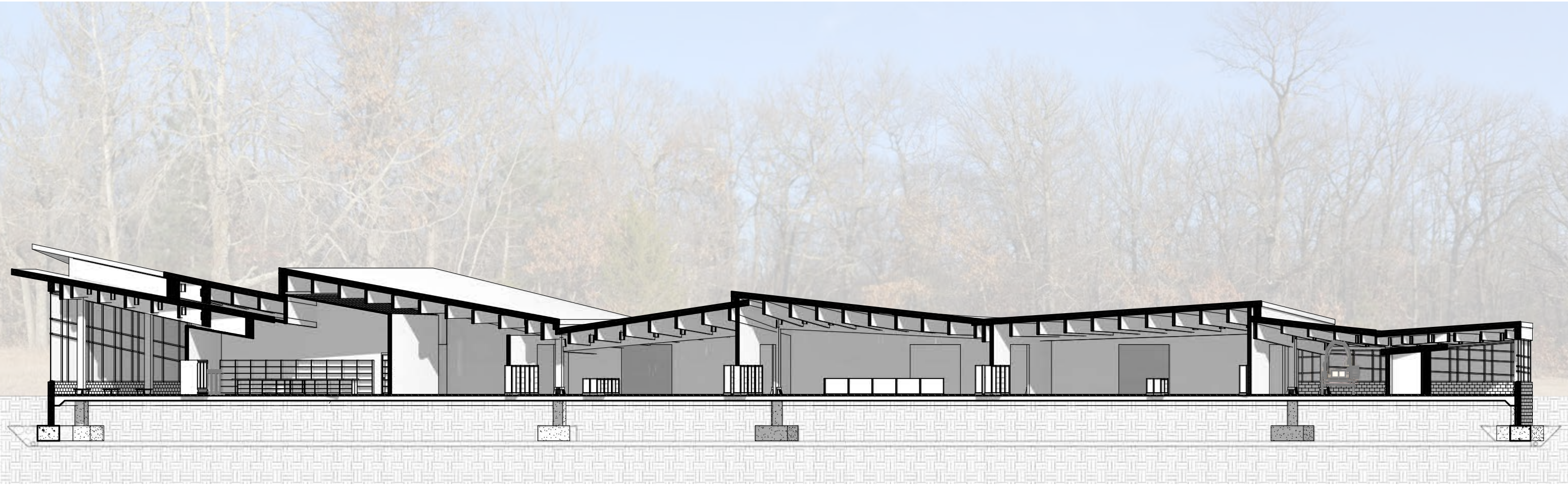


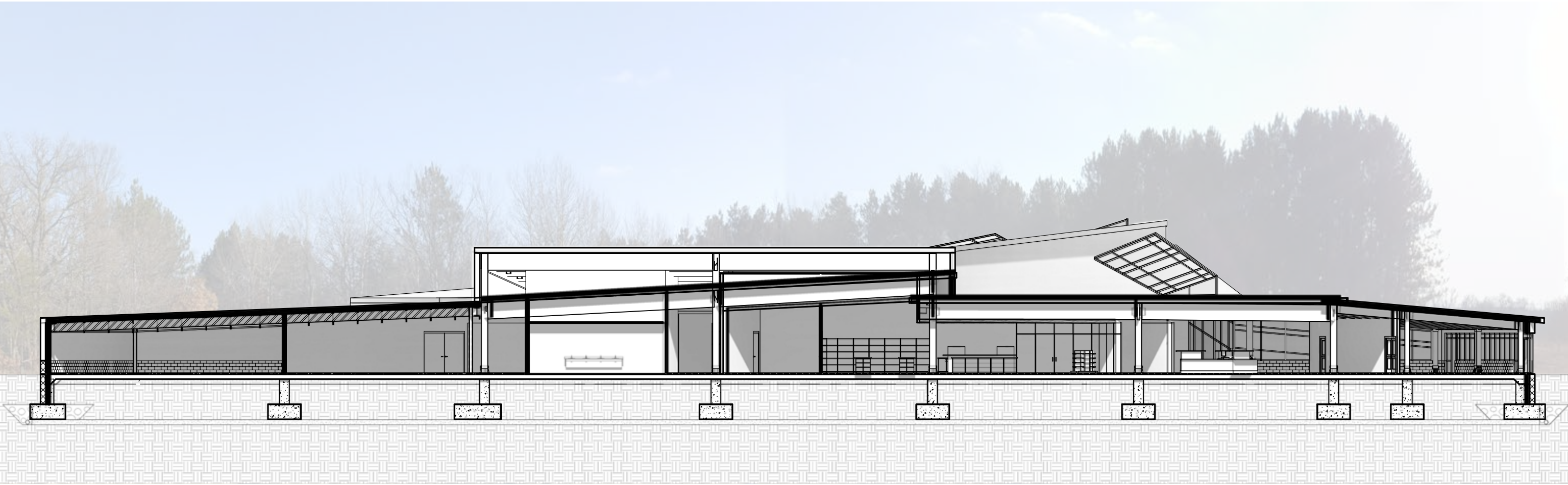


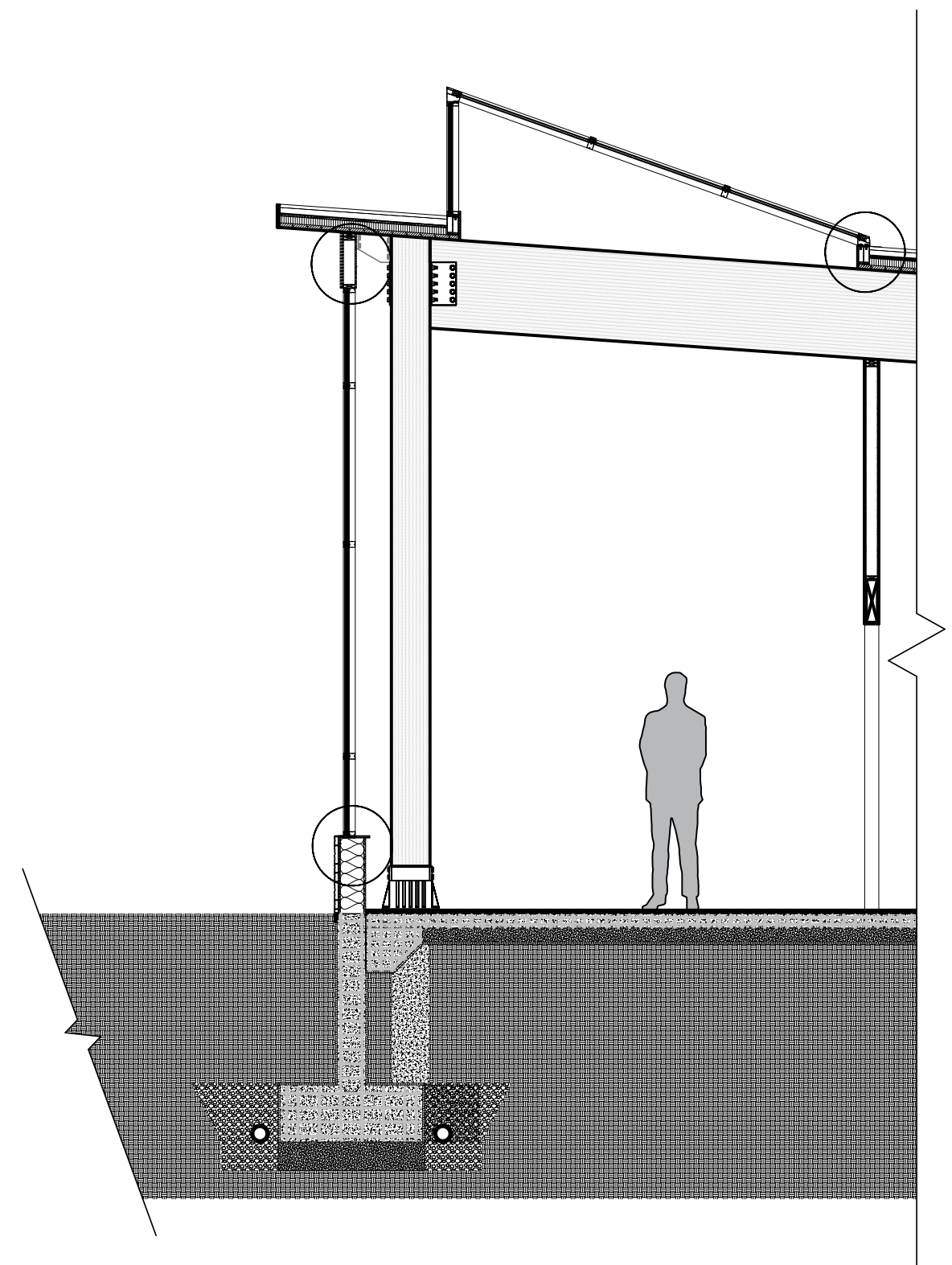
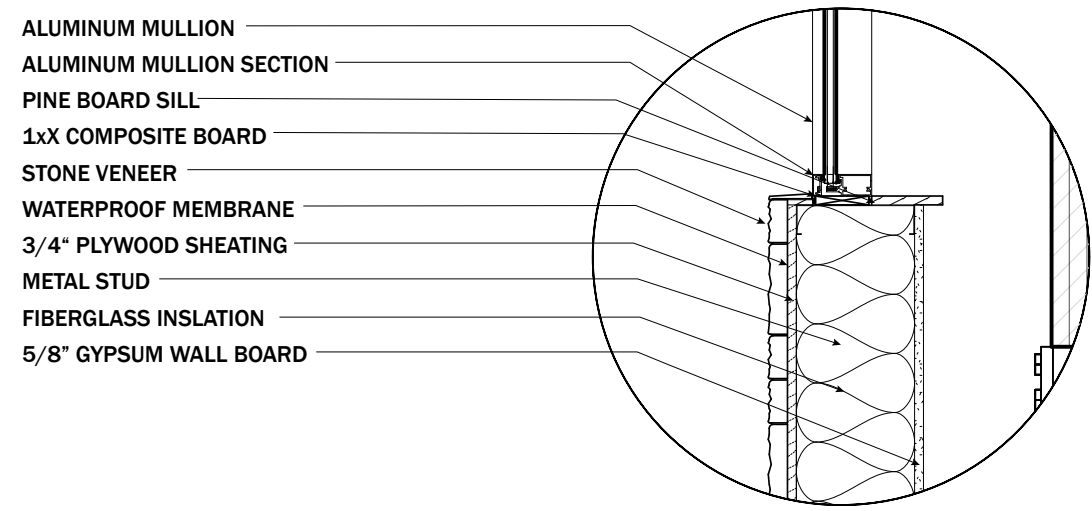
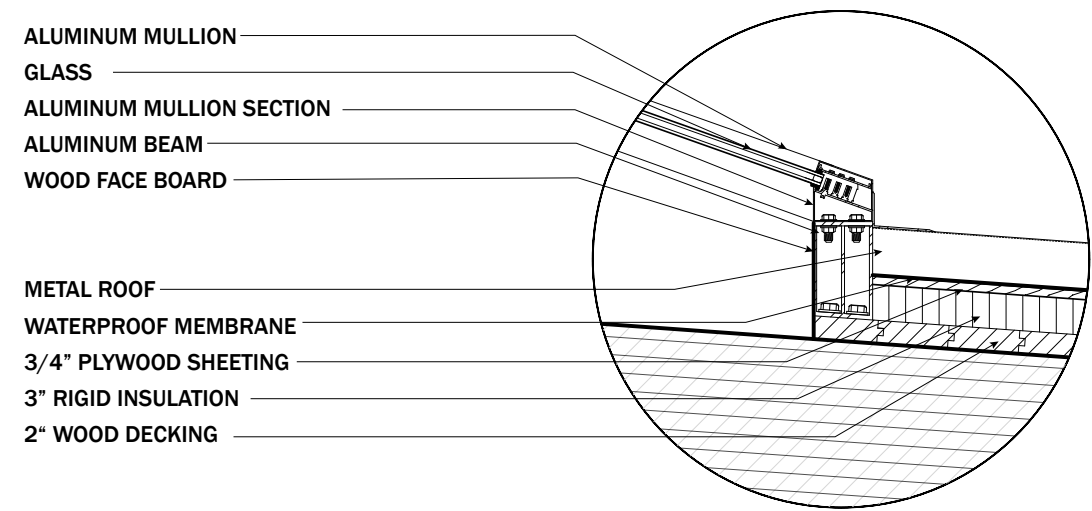
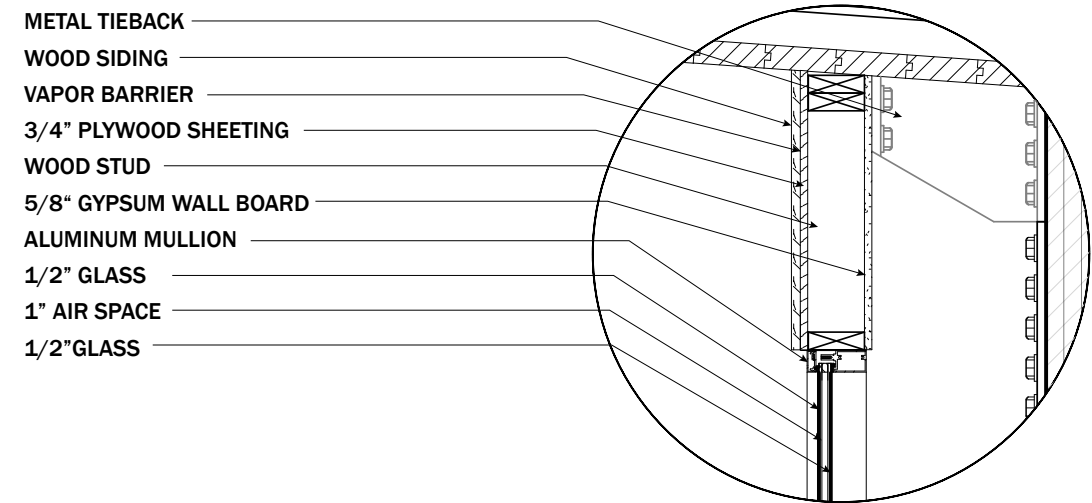


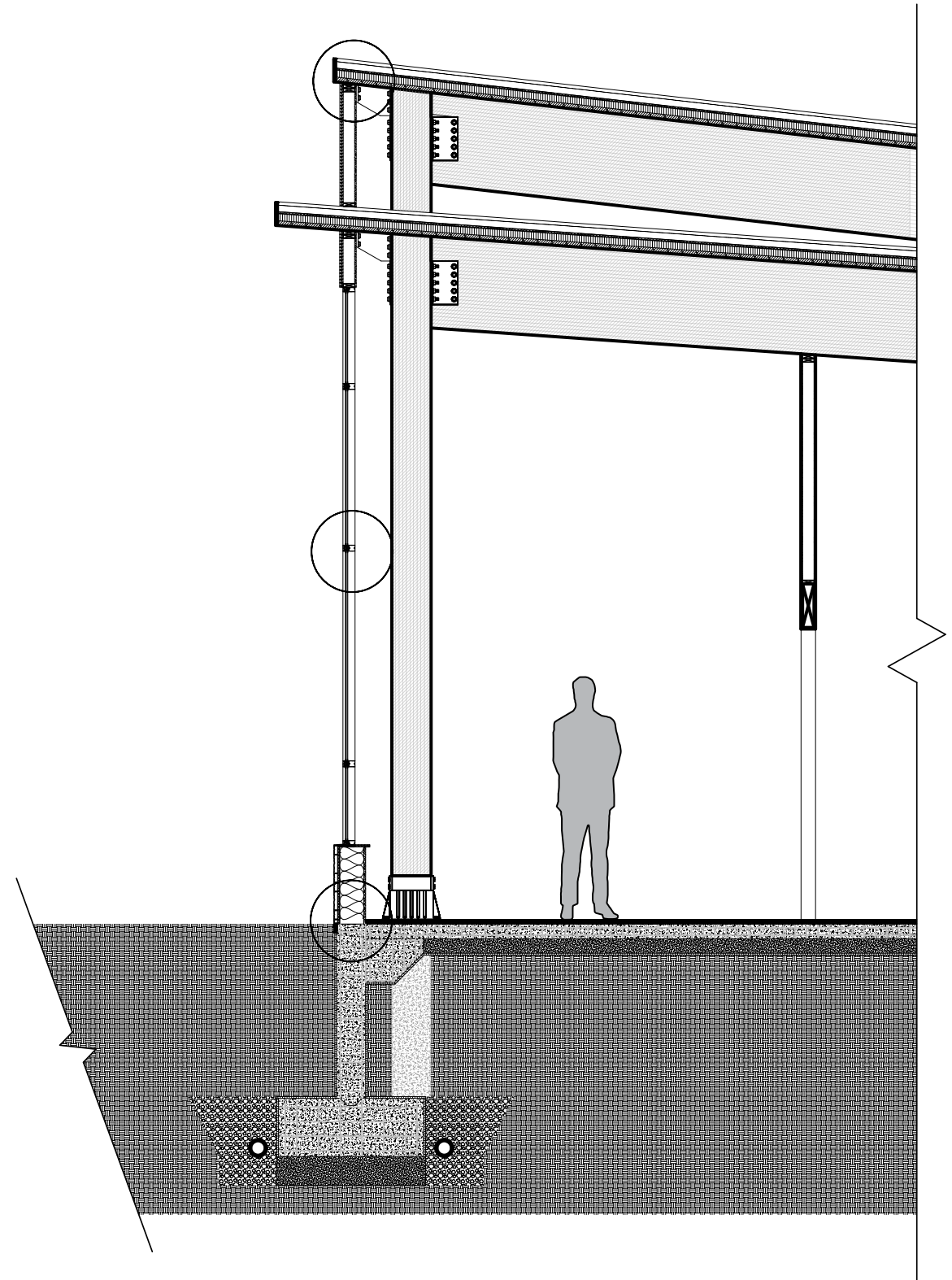
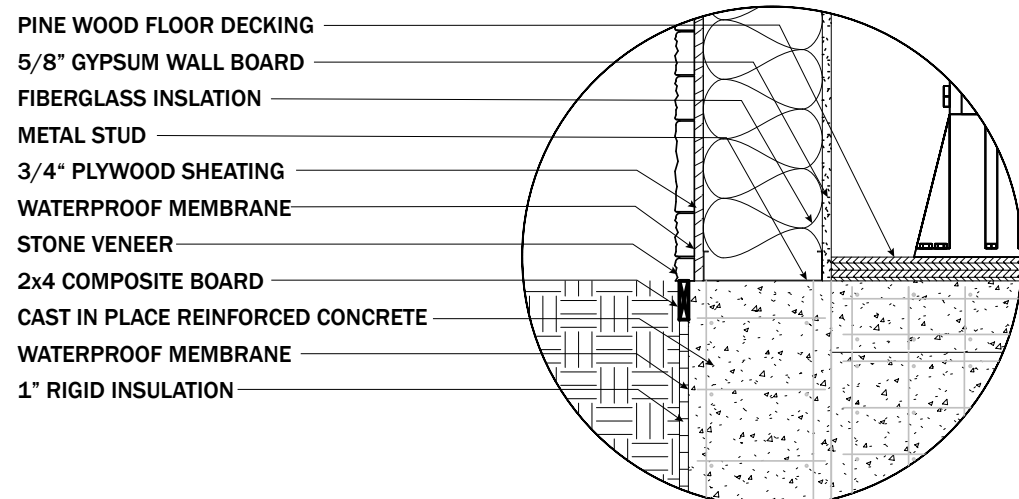
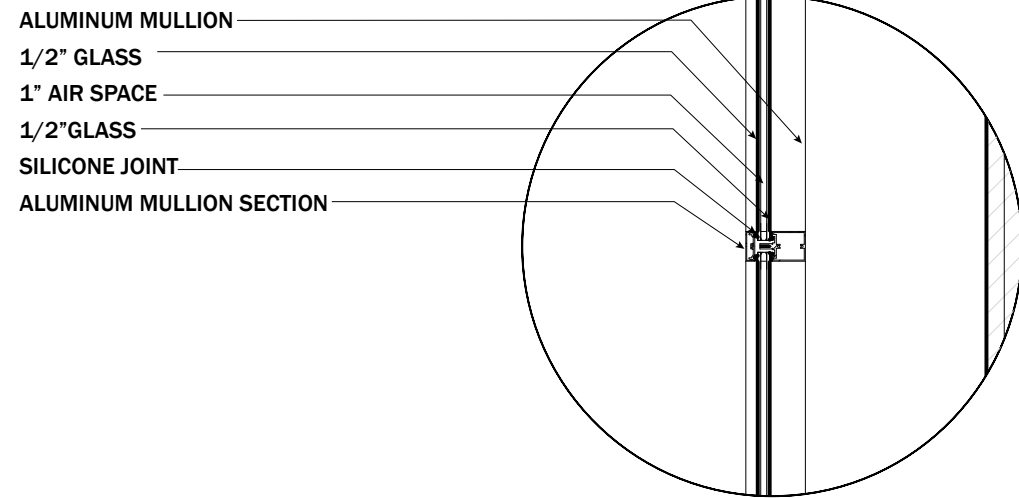
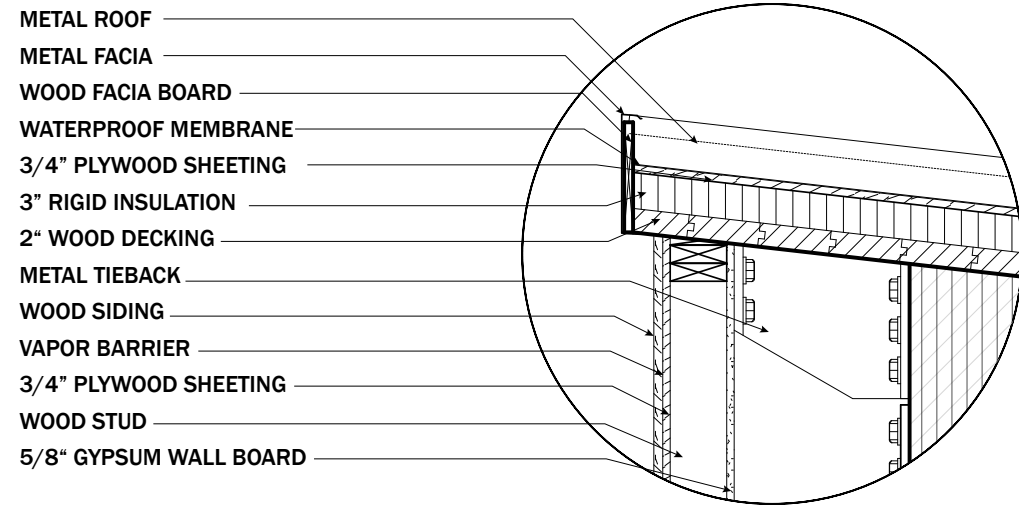












**Questions or Comments?**