

INBETWEEN

LIFE, LOSS, AND HEALING WITHIN ARCHITECTURAL SPACE

**Mental Healthcare must do a better job
in including our environment.**

A person is walking away from the camera in a foggy, misty environment. The person is wearing a dark jacket and pants. The background is a soft, hazy landscape with some faint outlines of trees or structures. The overall mood is somber and reflective.

**Mental Healthcare must do a better job
in including our environment.**



**disappearance of death in our society
specialized space in healthcare architecture**









16 Million

-National Survey on Drug Use and Mental Health
-National Institute of Mental Health



ATLANTA, GEORGIA

OLD FOURTH WARD



lack of capable mental health clinicians
enormous amount of people that cannot get access

ATLANTA, GEORGIA

OLD FOURTH WARD

The background is a faded, light-colored photograph of a modern building. On the left, a dark, angular architectural element is visible. In the center, a balcony with a metal railing runs across the top. On the right, there are some leafy plants. At the bottom, a person's legs and feet are visible, walking on a light-colored surface.

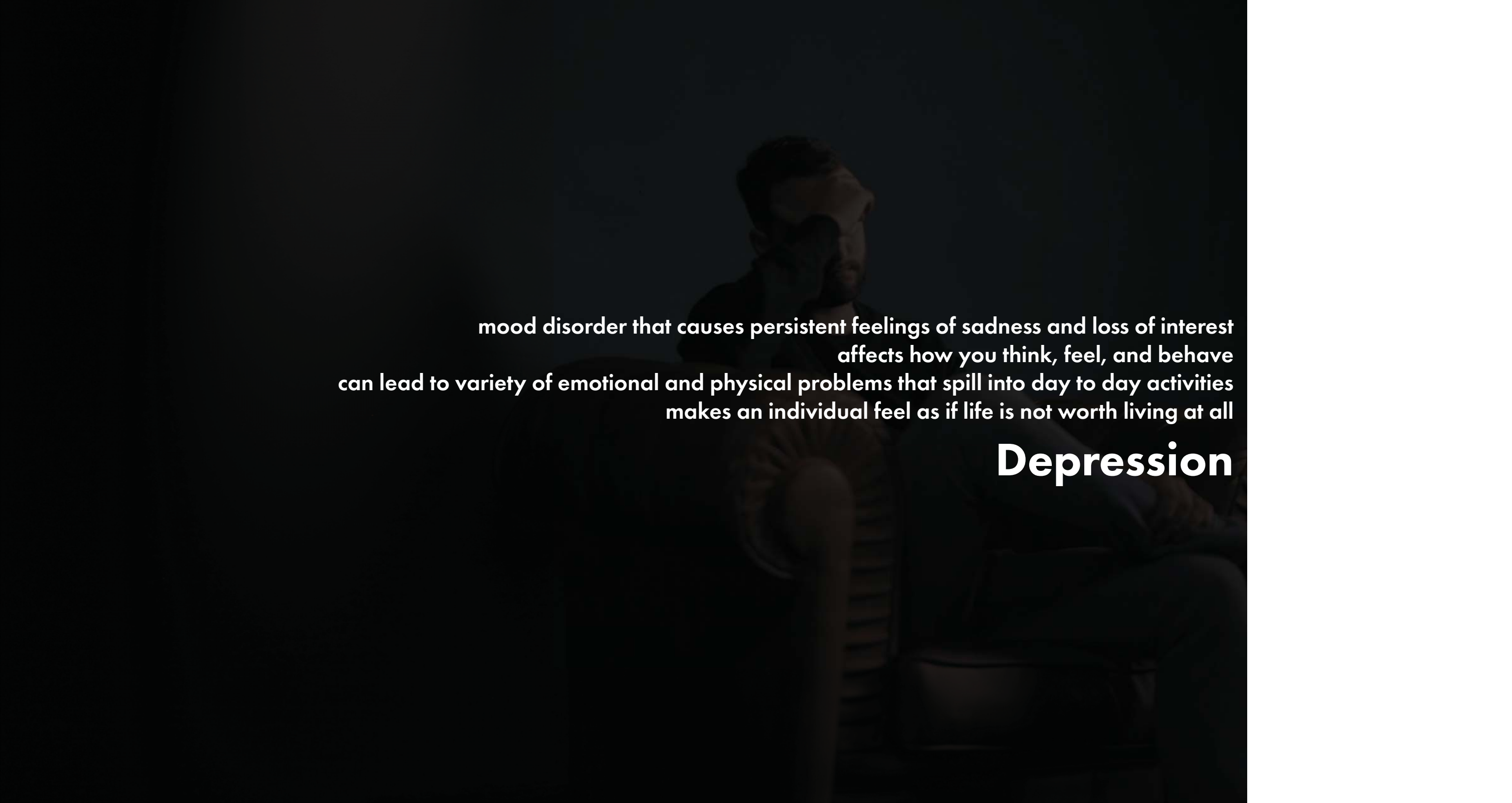
Life, Loss, and Healing



“I am concerned with the lack of representation of death as it has come down to us through the millenia of human memory, whether in the interpretation provided by religion or in the rituals of everyday life. I am concerned with a much more radical and specifically contemporary occurrence, that is, with the gradual disappearance of the representation of death in modern society.”

-Hans-Georg Gadamer





mood disorder that causes persistent feelings of sadness and loss of interest
affects how you think, feel, and behave
can lead to variety of emotional and physical problems that spill into day to day activities
makes an individual feel as if life is not worth living at all

Depression





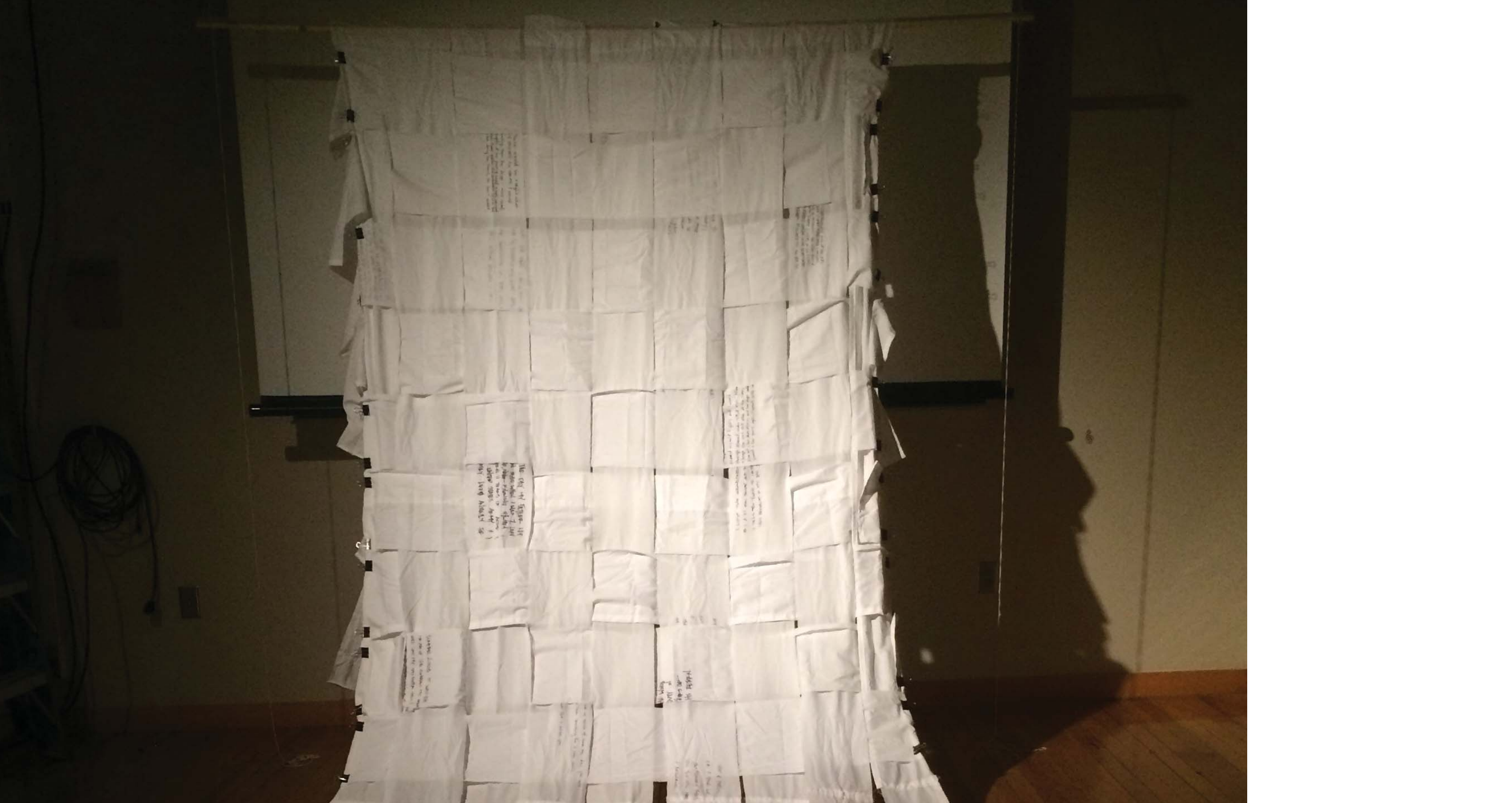


death makes us uncomfortable

quickest way possible

an overreaction





1944
1945
1946
1947
1948
1949
1950
1951
1952
1953
1954
1955
1956
1957
1958
1959
1960
1961
1962
1963
1964
1965
1966
1967
1968
1969
1970
1971
1972
1973
1974
1975
1976
1977
1978
1979
1980
1981
1982
1983
1984
1985
1986
1987
1988
1989
1990
1991
1992
1993
1994
1995
1996
1997
1998
1999
2000
2001
2002
2003
2004
2005
2006
2007
2008
2009
2010
2011
2012
2013
2014
2015
2016
2017
2018
2019
2020
2021
2022
2023
2024
2025

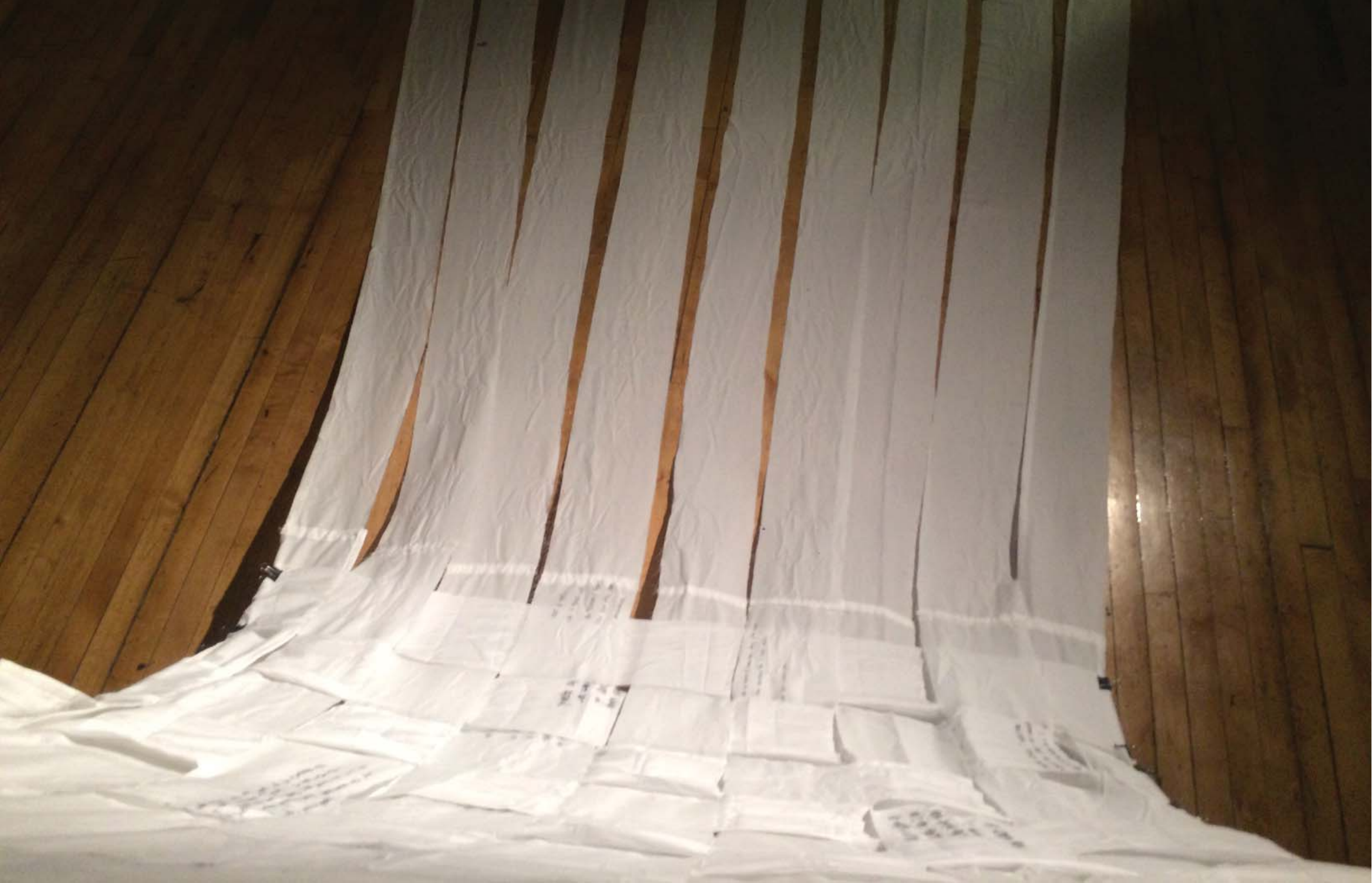
The City of Seattle - It
is a pleasure to have you
in our city. We are
proud to have you
and your family. We
will love to have you
and your family.

1944
1945
1946
1947
1948
1949
1950
1951
1952
1953
1954
1955
1956
1957
1958
1959
1960
1961
1962
1963
1964
1965
1966
1967
1968
1969
1970
1971
1972
1973
1974
1975
1976
1977
1978
1979
1980
1981
1982
1983
1984
1985
1986
1987
1988
1989
1990
1991
1992
1993
1994
1995
1996
1997
1998
1999
2000
2001
2002
2003
2004
2005
2006
2007
2008
2009
2010
2011
2012
2013
2014
2015
2016
2017
2018
2019
2020
2021
2022
2023
2024
2025

1944
1945
1946
1947
1948
1949
1950
1951
1952
1953
1954
1955
1956
1957
1958
1959
1960
1961
1962
1963
1964
1965
1966
1967
1968
1969
1970
1971
1972
1973
1974
1975
1976
1977
1978
1979
1980
1981
1982
1983
1984
1985
1986
1987
1988
1989
1990
1991
1992
1993
1994
1995
1996
1997
1998
1999
2000
2001
2002
2003
2004
2005
2006
2007
2008
2009
2010
2011
2012
2013
2014
2015
2016
2017
2018
2019
2020
2021
2022
2023
2024
2025



14 TH
 IN ARRY I
 MANY THAT YOU SHOULD'VE
 BE' PRIDE
 AS SO
 LIKE A BOSS... OR TH
 AS SO
 EVERY NOW HAS SADDEN TO IT...
 SOMETHING IN YOU, THERE WAS
 BUT NOW I FEEL SILLY...
 TIMES





The Funeral Games of Patroclus - 1778 fresco by Jacques-Louis David



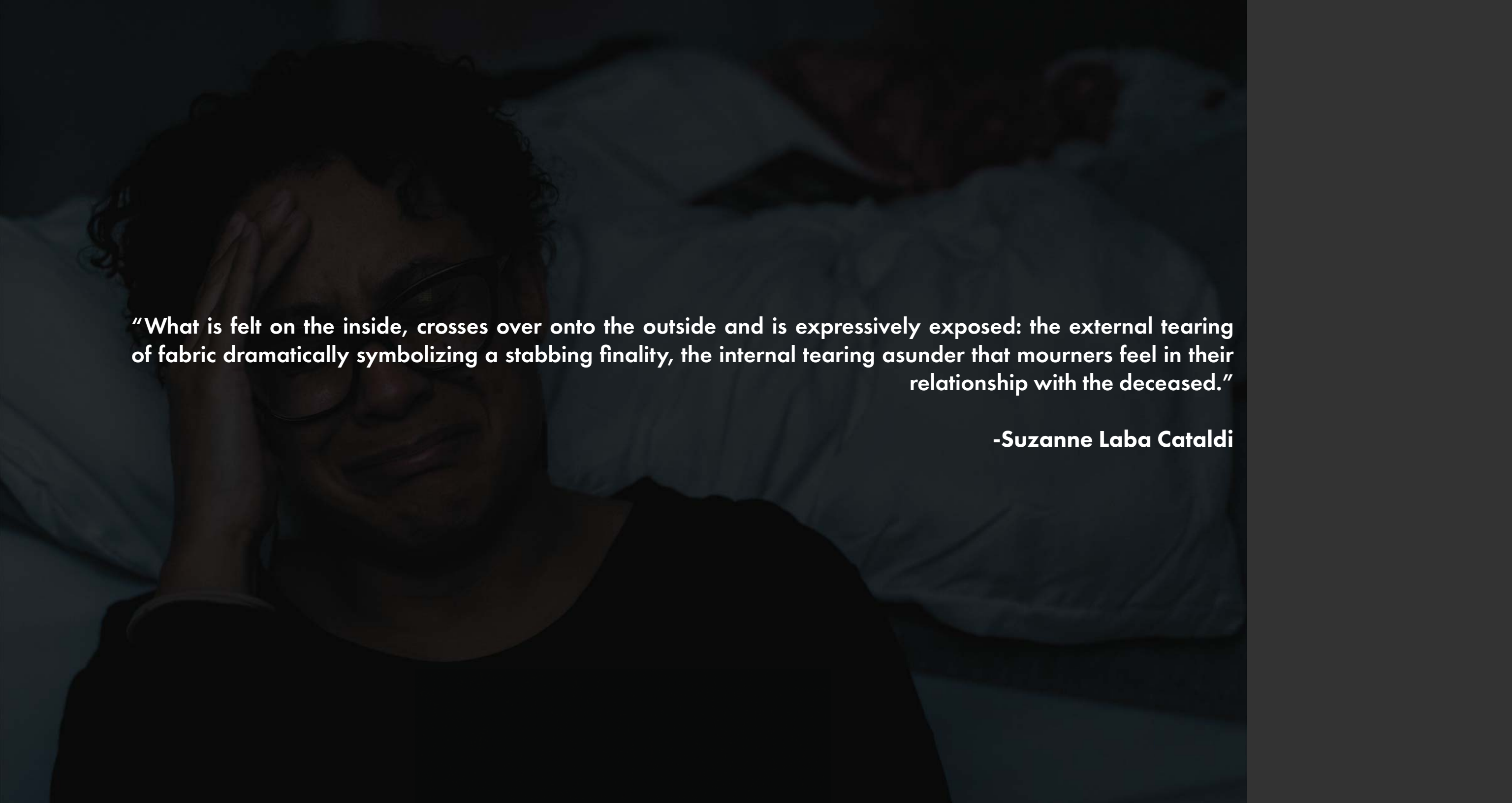


"I image grief as an injury. As a type of open wound; Torn tissue. I came to this sense of grief through reflecting on how I felt as a teenager when my father died completey, unexpectedly all at once. I felt as though he was ripped away and that I was ripped apart from him"

-Suzanne Laba Cataldi

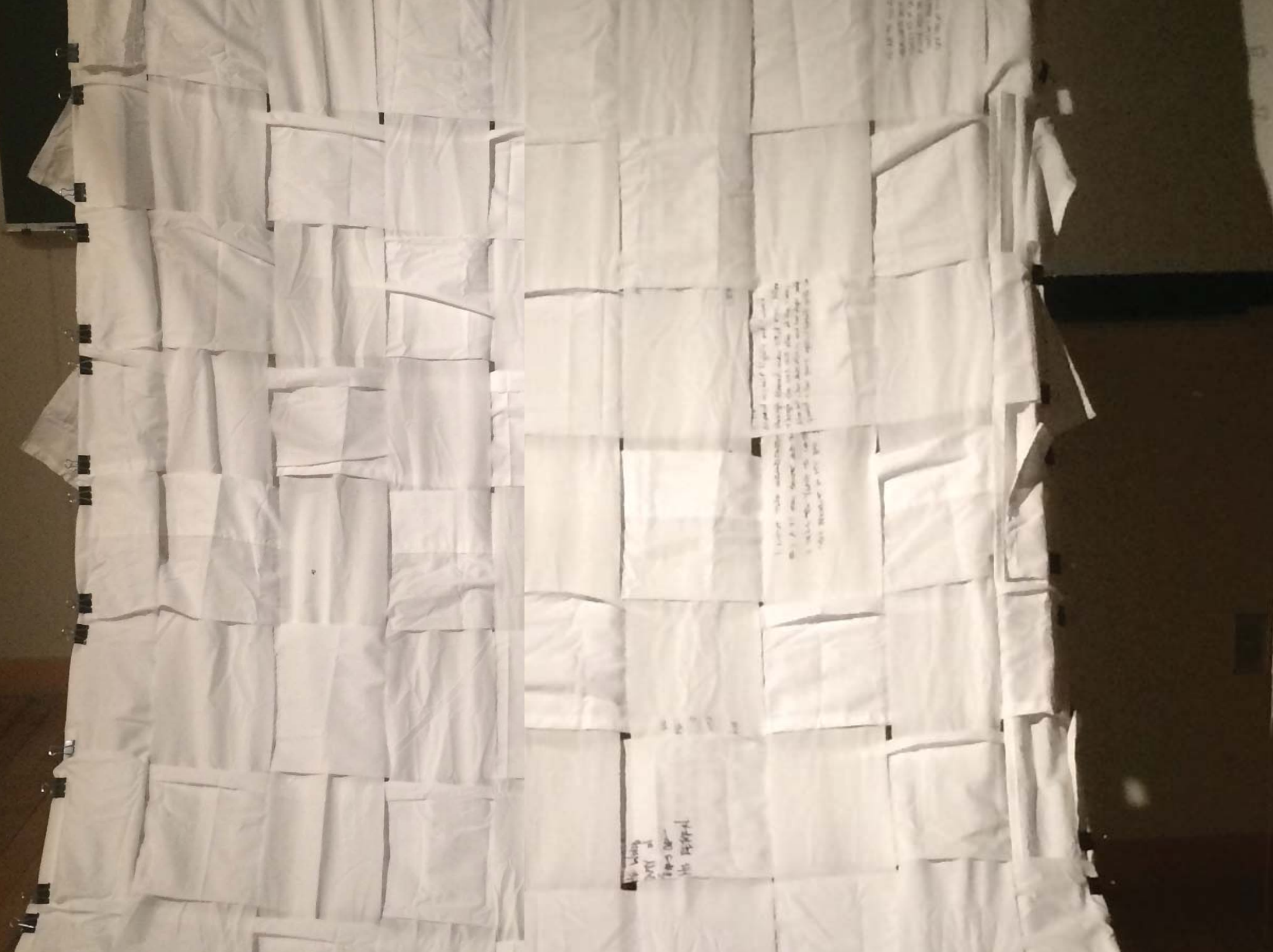




A person with curly hair and glasses is shown from the chest up, covering their face with both hands. They appear to be in a state of grief or distress. The background is a light-colored, possibly white, fabric that is slightly wrinkled. The overall lighting is dim, creating a somber and intimate atmosphere.

“What is felt on the inside, crosses over onto the outside and is expressively exposed: the external tearing of fabric dramatically symbolizing a stabbing finality, the internal tearing asunder that mourners feel in their relationship with the deceased.”

-Suzanne Laba Cataldi



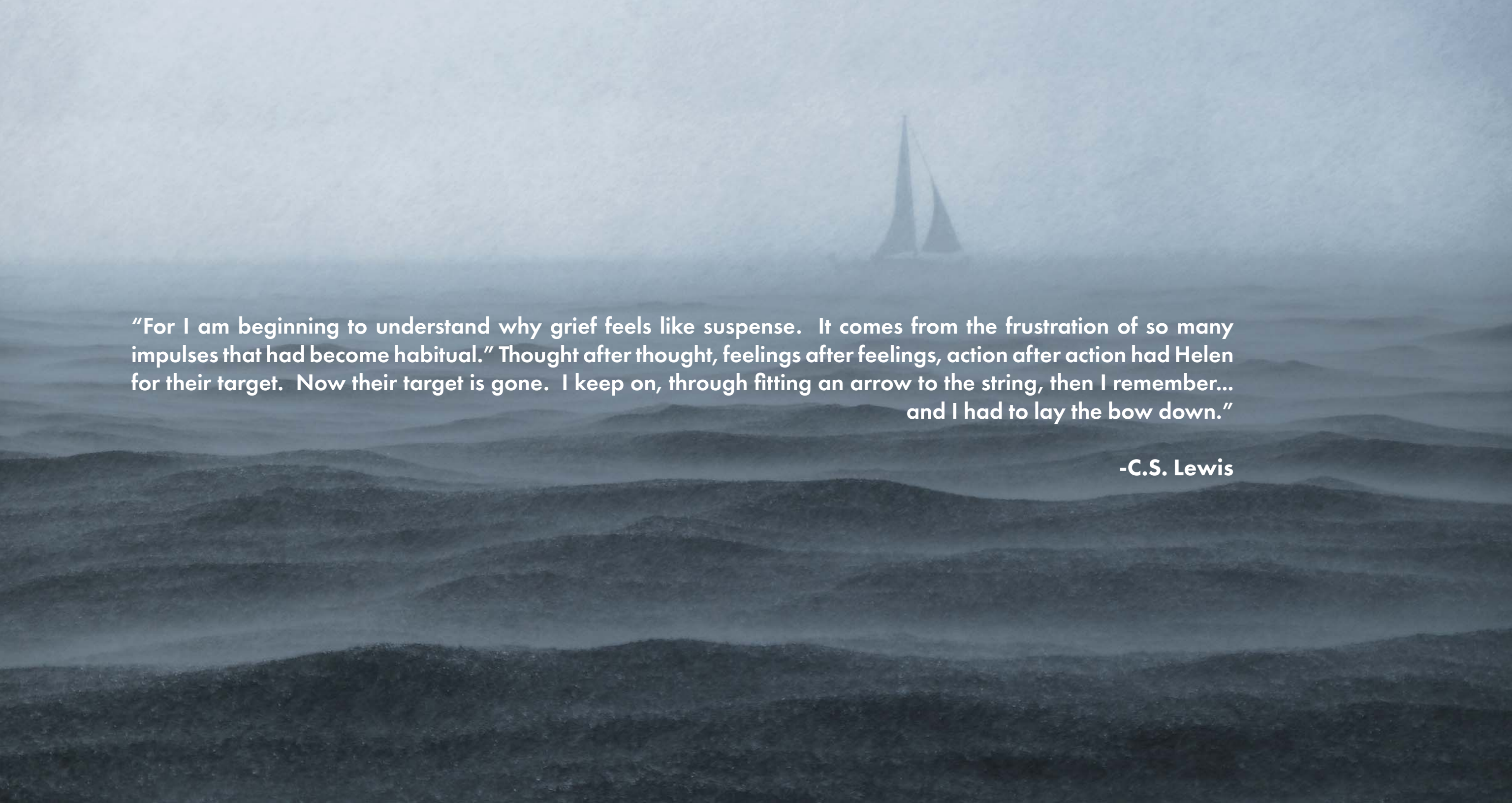
1000
1000
1000
1000

1000
1000
1000
1000

1000
1000
1000
1000





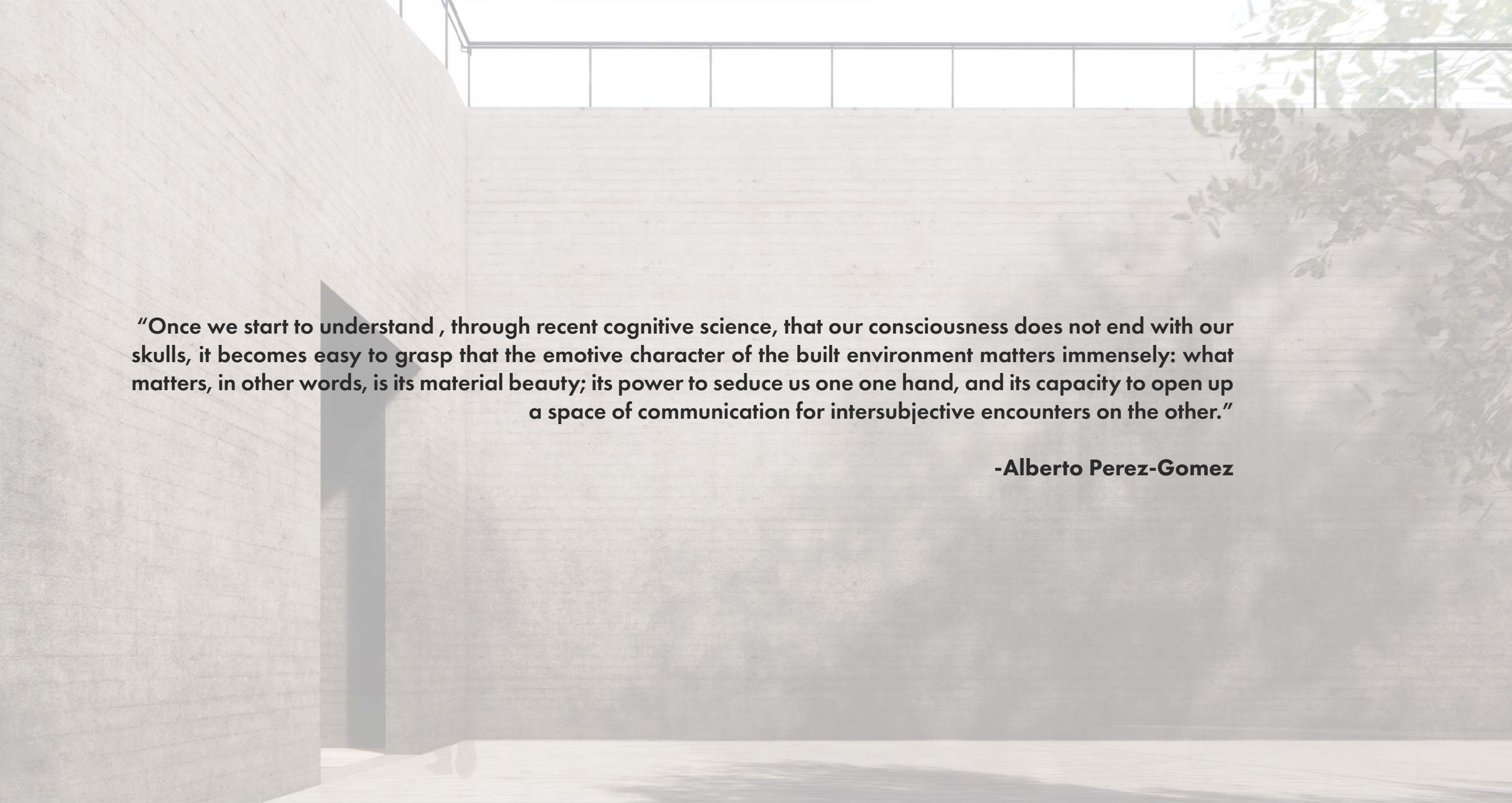
A misty landscape with rolling hills and a sailboat on the horizon. The scene is monochromatic, with shades of blue and grey. The hills are layered, creating a sense of depth and distance. In the upper center, a sailboat with two sails is visible on the horizon, its form softened by the mist. The overall mood is quiet and contemplative.

“For I am beginning to understand why grief feels like suspense. It comes from the frustration of so many impulses that had become habitual.” Thought after thought, feelings after feelings, action after action had Helen for their target. Now their target is gone. I keep on, through fitting an arrow to the string, then I remember... and I had to lay the bow down.”

-C.S. Lewis

“Once we start to understand , through recent cognitive science, that our consciousness does not end with our skulls, it becomes easy to grasp that the emotive character of the built environment matters immensely: what matters, in other words, is its material beauty; its power to seduce us one one hand, and its capacity to open up a space of communication for intersubjective encounters on the other.”

-Alberto Perez-Gomez



“Once we start to understand , through recent cognitive science, that our consciousness does not end with our skulls, it becomes easy to grasp that the emotive character of the built environment matters immensely: what matters, in other words, is its material beauty; its power to seduce us one one hand, and its capacity to open up a space of communication for intersubjective encounters on the other.”

-Alberto Perez-Gomez

Life, Loss, and Healing will be the strands that will be woven together to create this new architectural space.

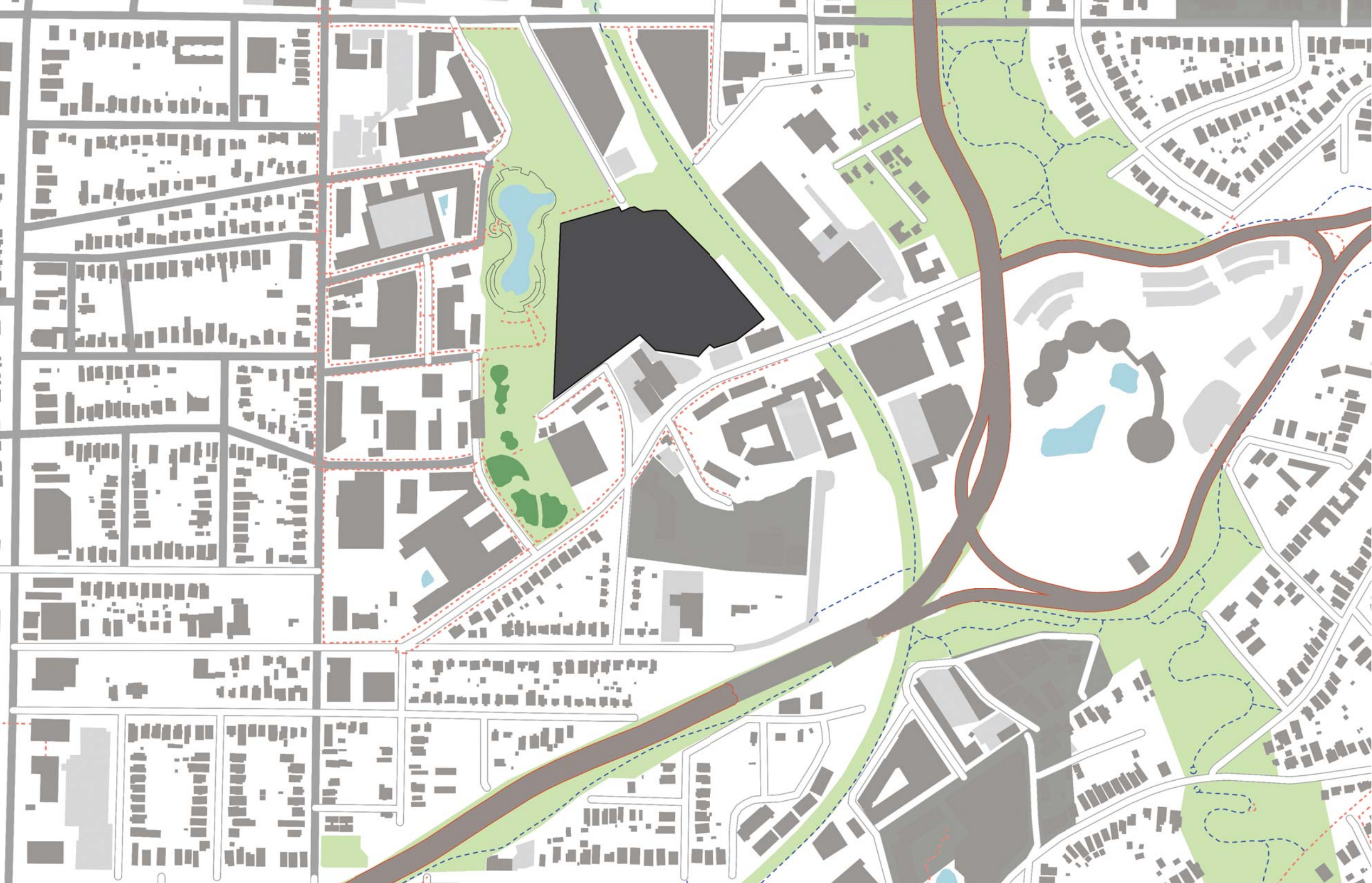
A map of the United States with a semi-transparent grey horizontal band across the middle. The text 'Atlanta Memorial & Mental Health Research Institute' is centered on this band. The map shows state boundaries, and the states of Georgia, Alabama, and Florida are shaded in a darker grey than the rest of the country.

Atlanta Memorial & Mental Health Research Institute

An aerial satellite view of the Atlanta Dream Center and surrounding area in the Old Fourth Ward neighborhood. The image shows a mix of modern commercial buildings, residential structures, green spaces, and a large park area with a lake. A semi-transparent dark banner is overlaid across the center of the image, containing the title text. A red location pin icon is placed on the Atlanta Dream Center building, with a white text label next to it. A red circular icon with the number '360' and a white circular icon with a bicycle symbol are also visible on the map.

Historical Old Fourth Ward Neighborhood

Atlanta Dream Center



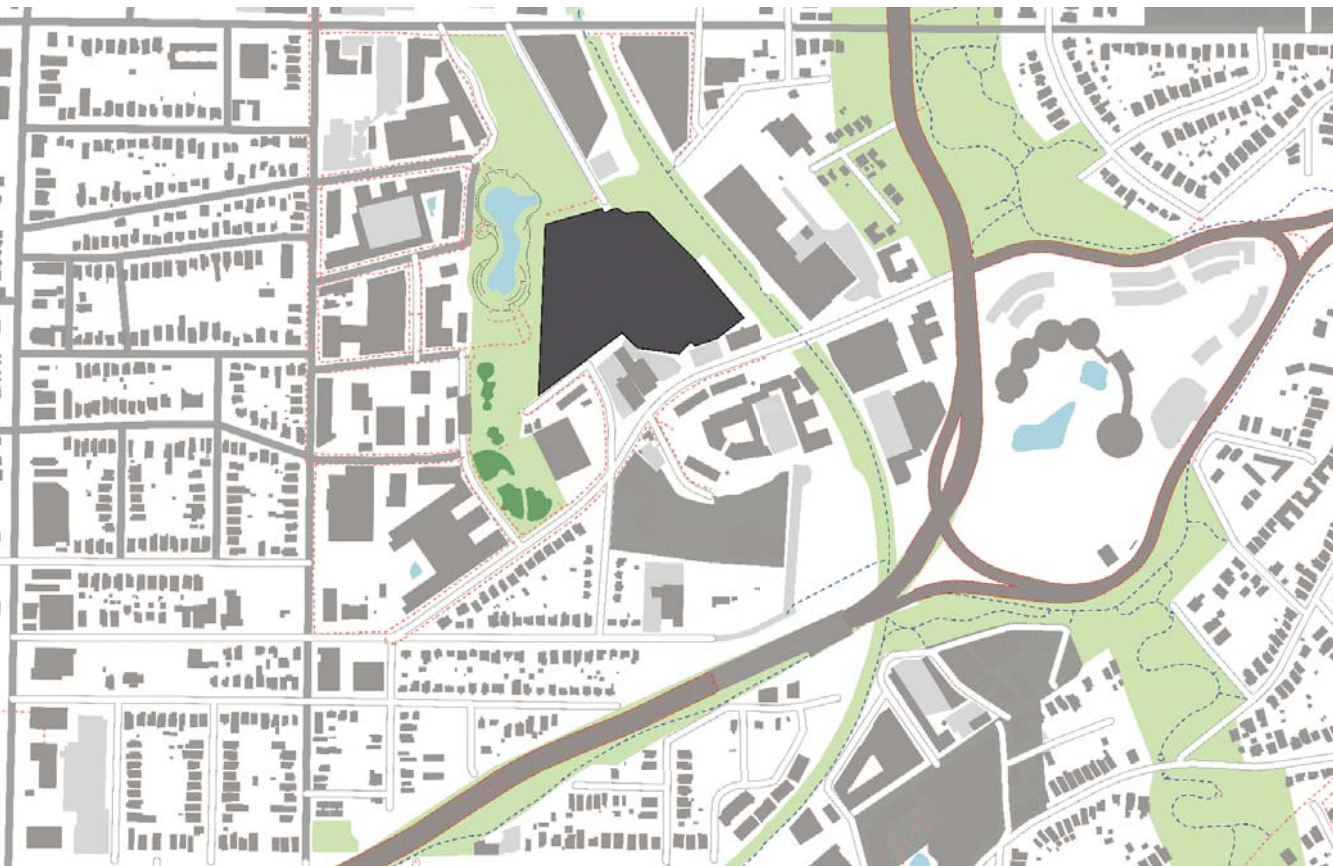


Old Fourth Ward

Upper Left: View of an outdoor Pub and Brewery Local to Old Fourth Ward

Upper Middle: A view of the Fourth Ward Park and the surrounding Residential Buildings that frame the West End

Upper Right: Ponce City Market, a major attraction to the neighborhood. Mixed Use



Old Fourth Ward

Upper Left: Splash Pad

Upper Middle: Playground

Upper Right: Park



