

SENSE-A-TECTURE

EXPERIENCE
BROUGHT TO YOU BY IROS

A PROCESS



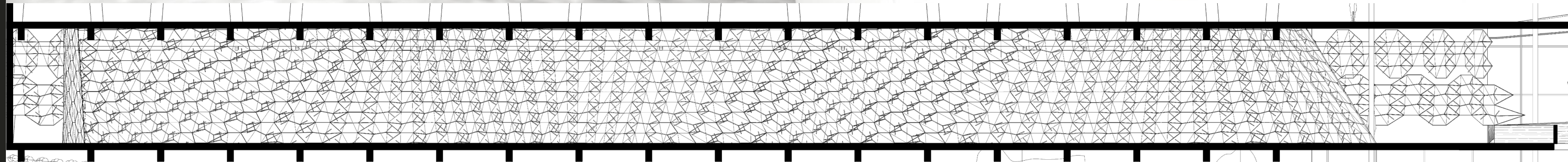


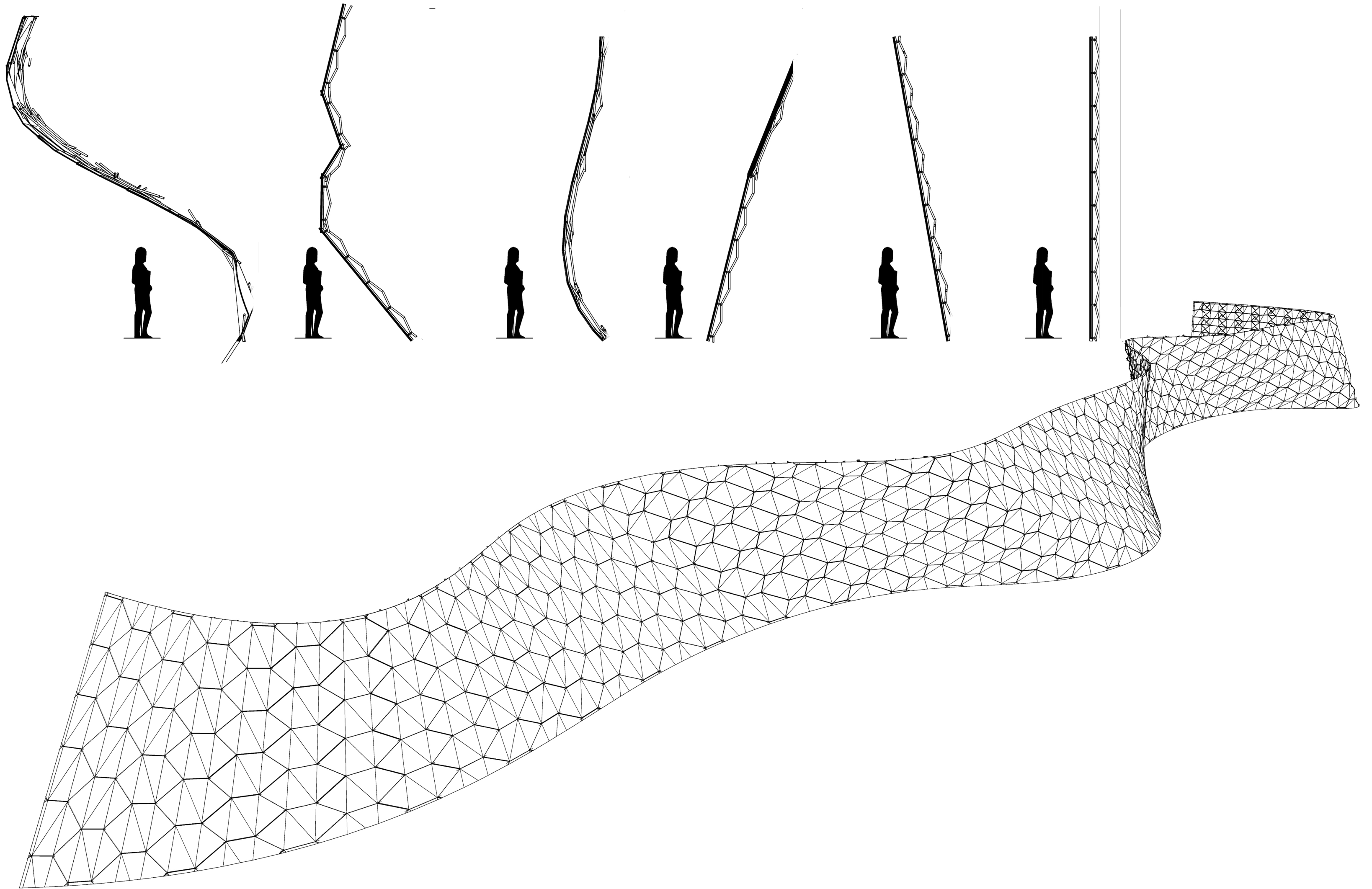
THE BEGINNING
SOUND WITHOUT MOTION

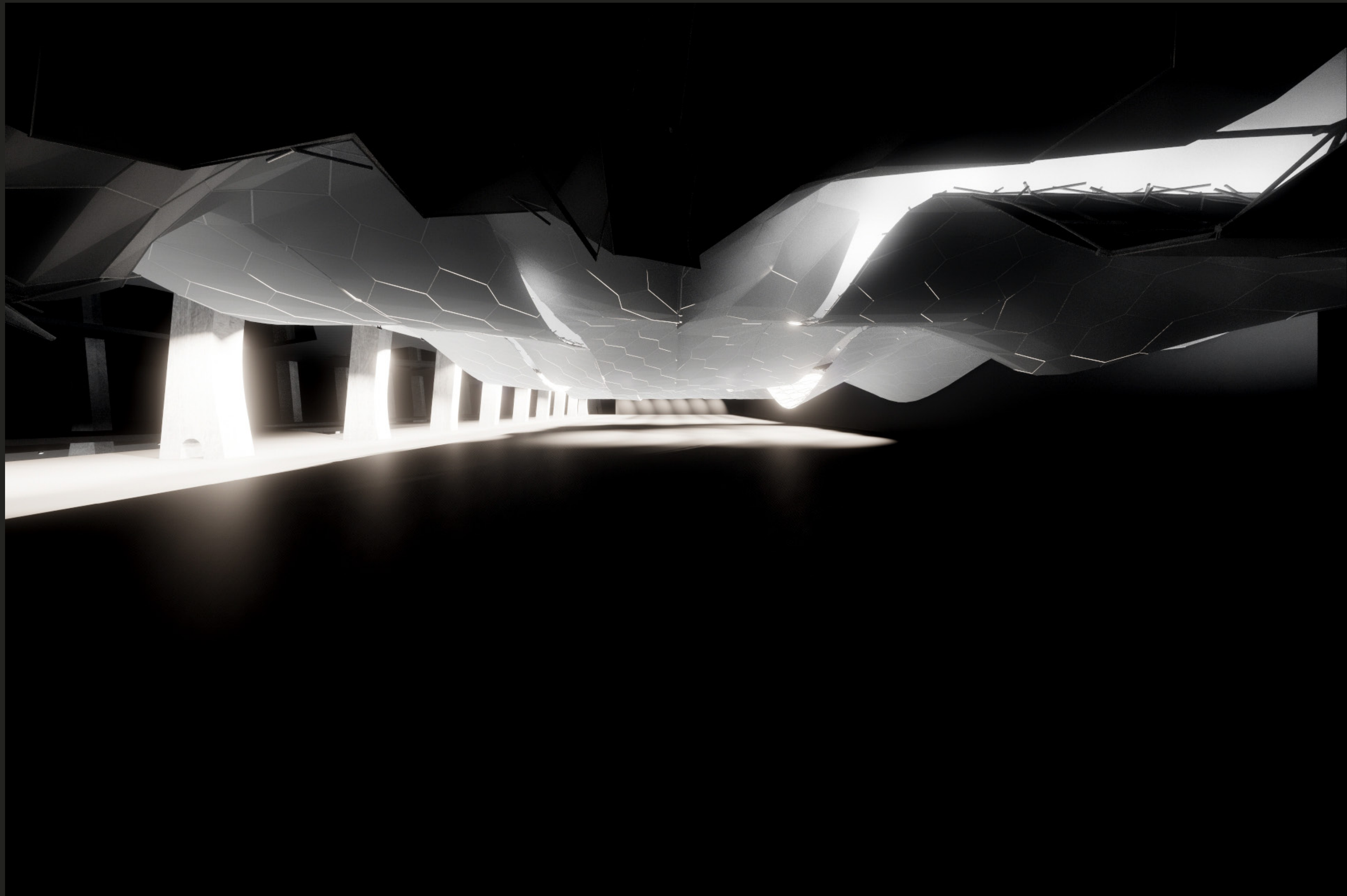
SENSOGRAPHY

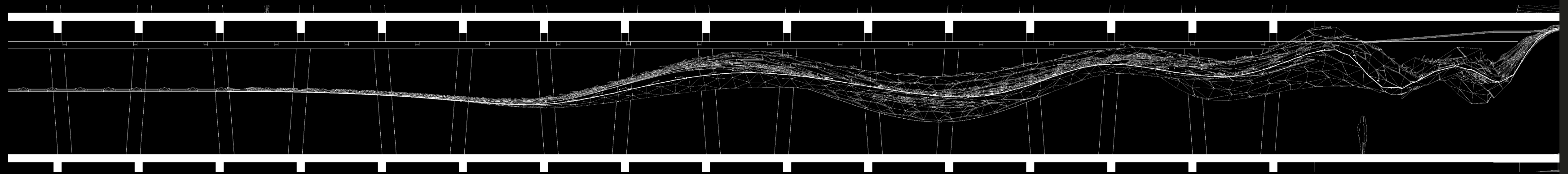
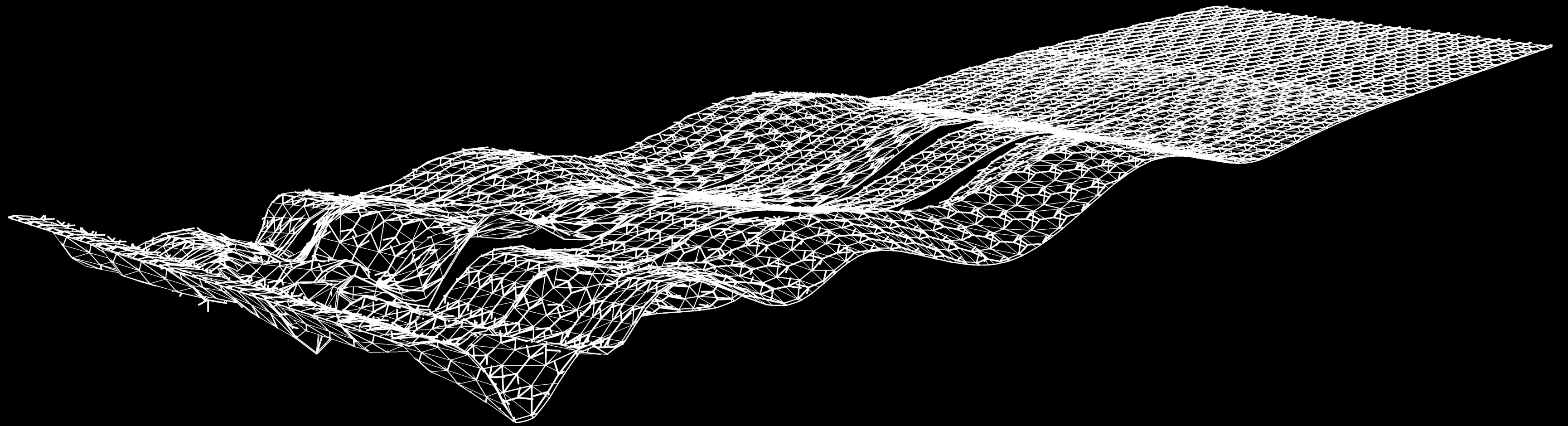
T Y P O L O G Y

FLEXIBILITY

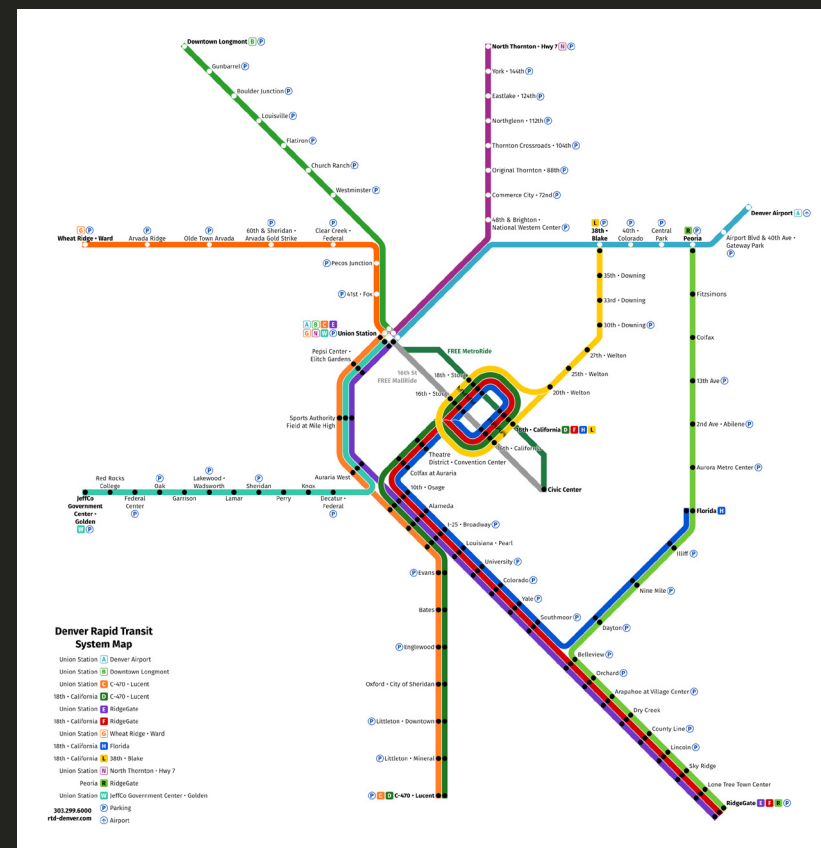
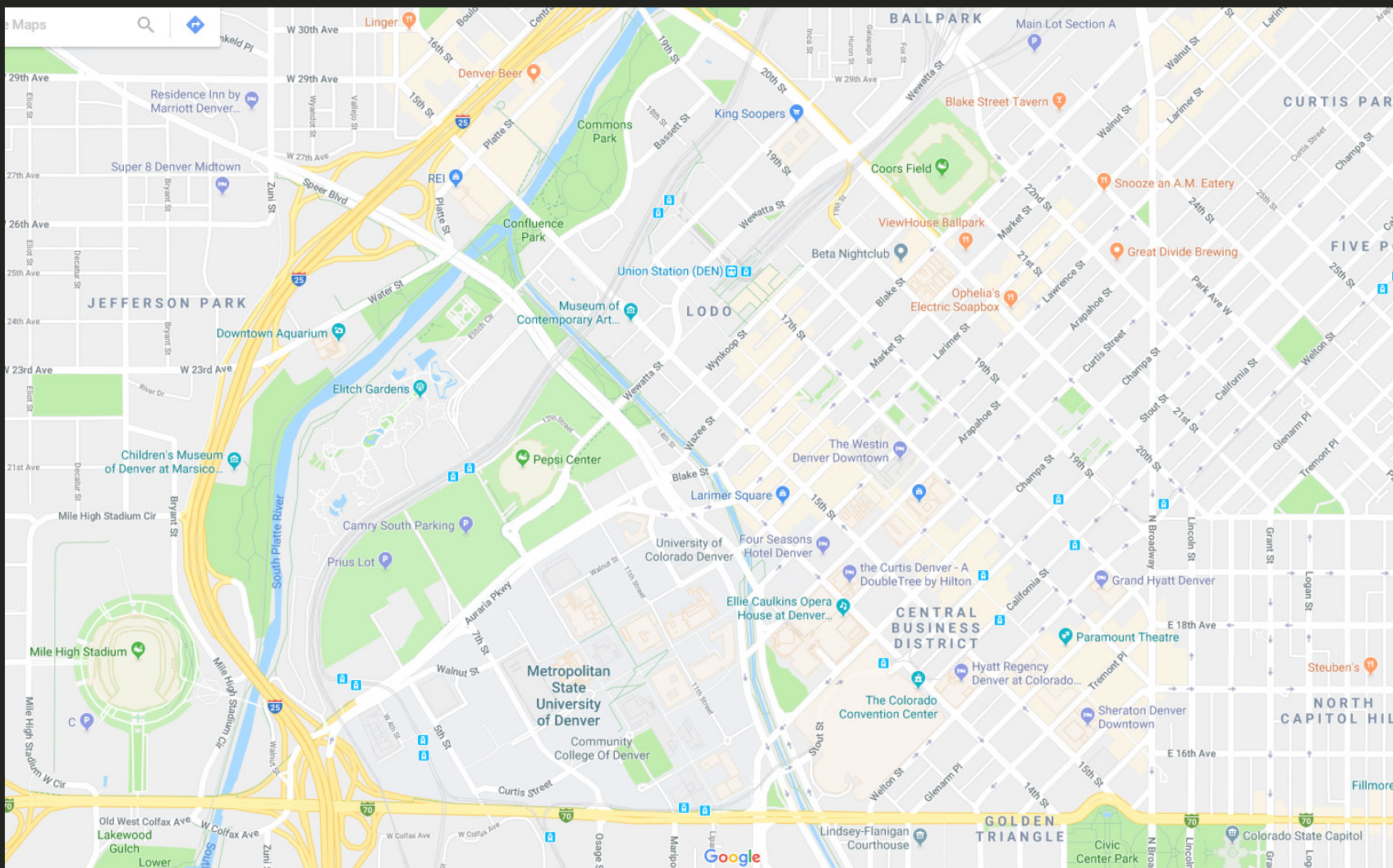
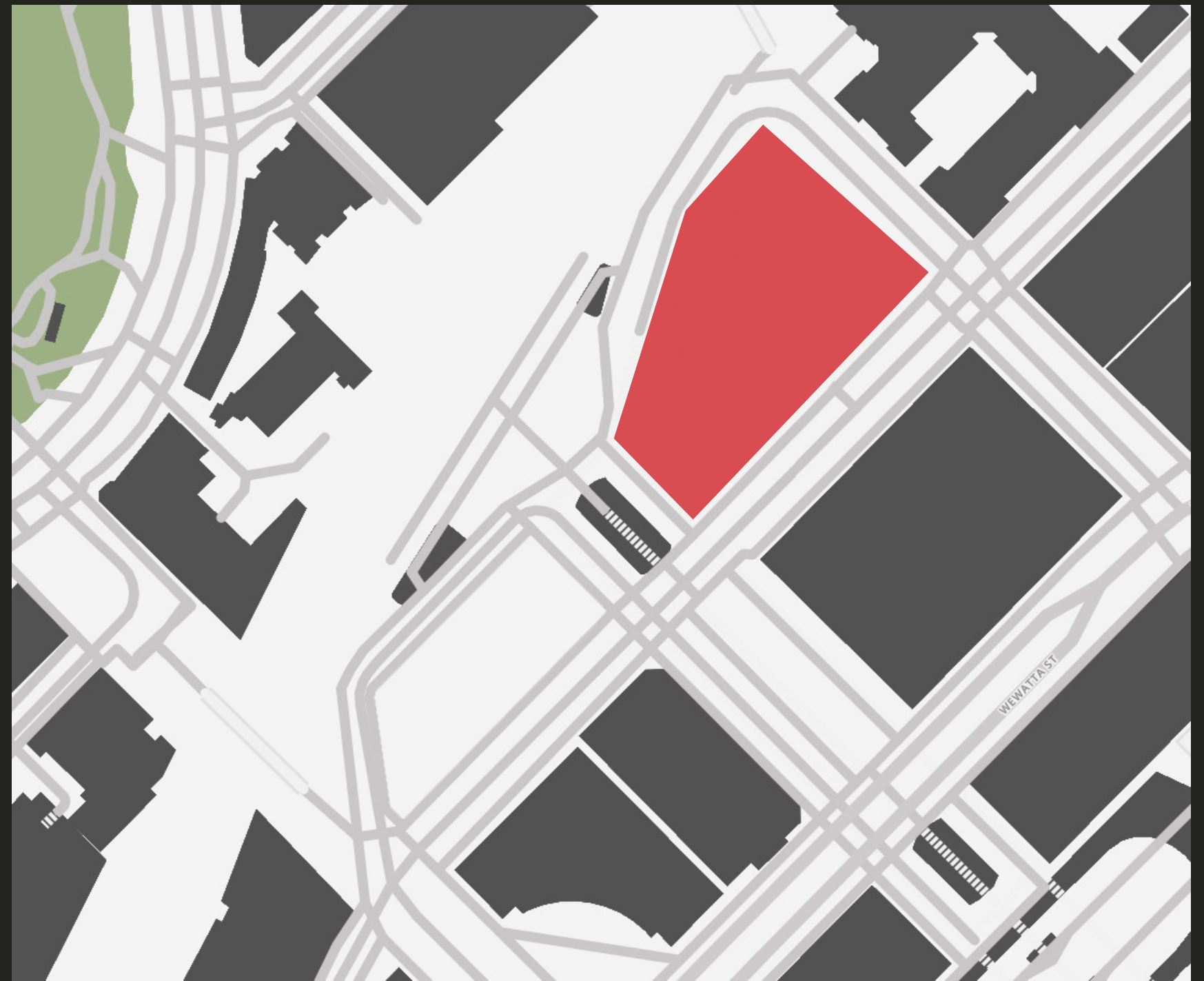
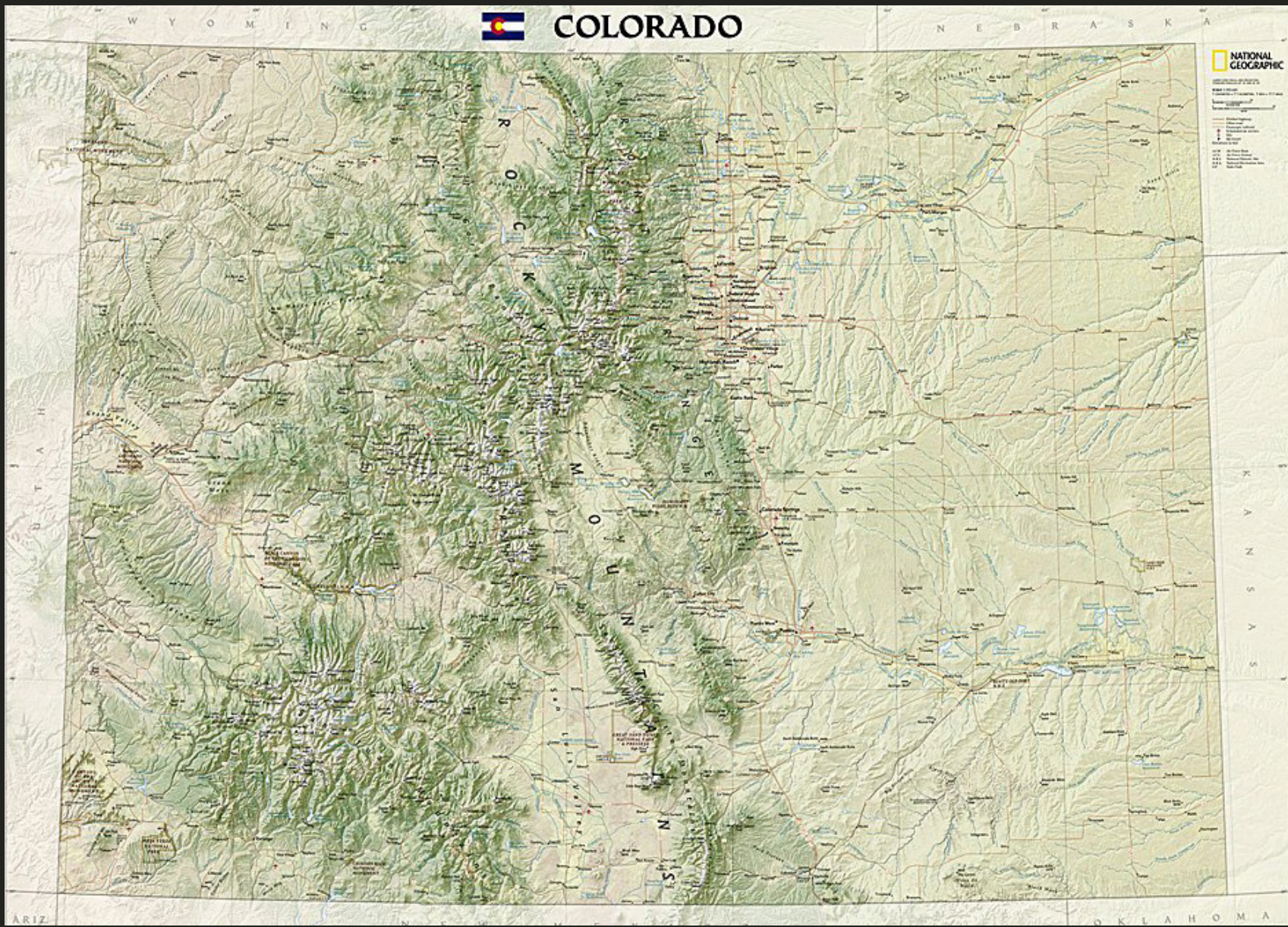








LOCATION

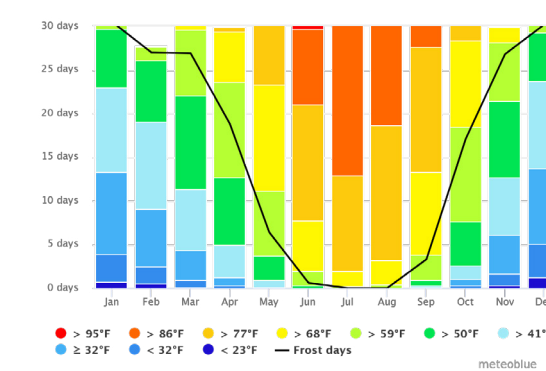
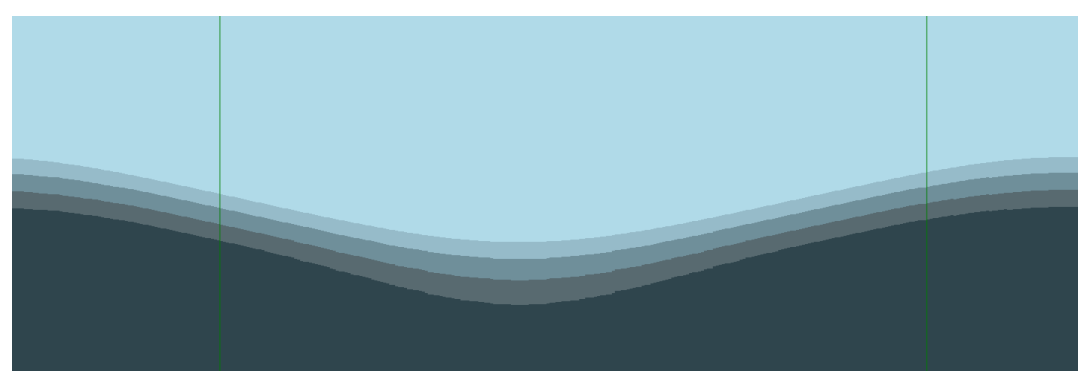
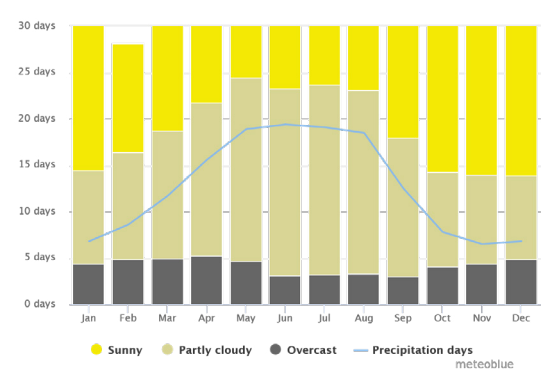
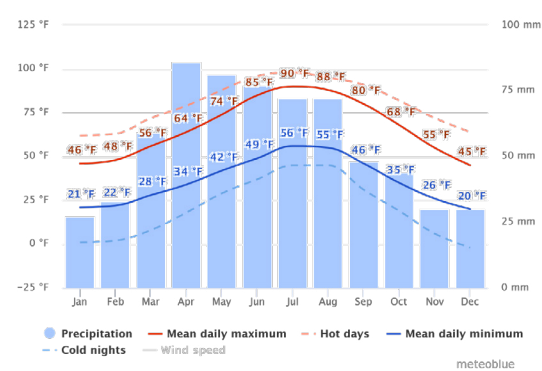
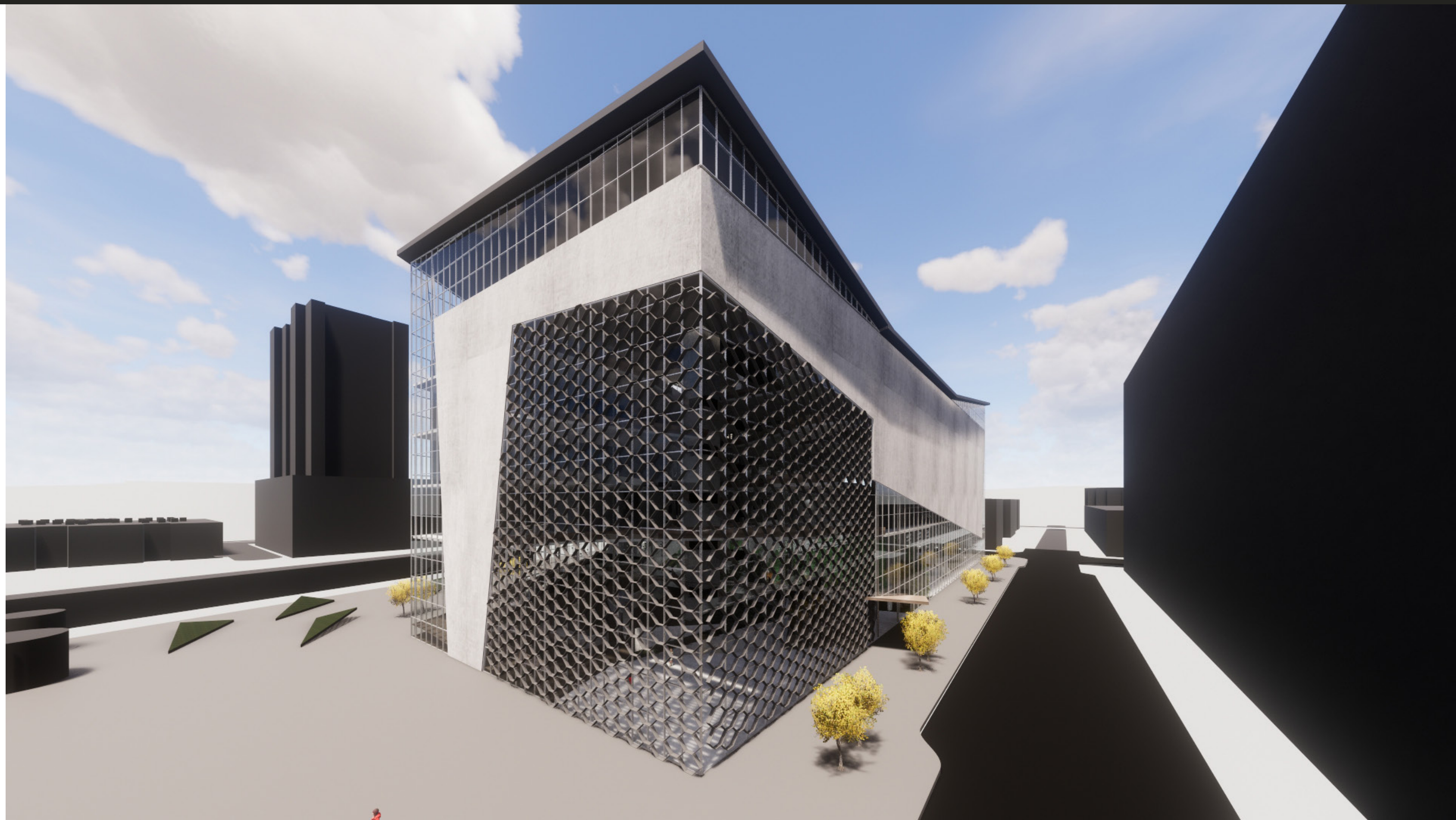


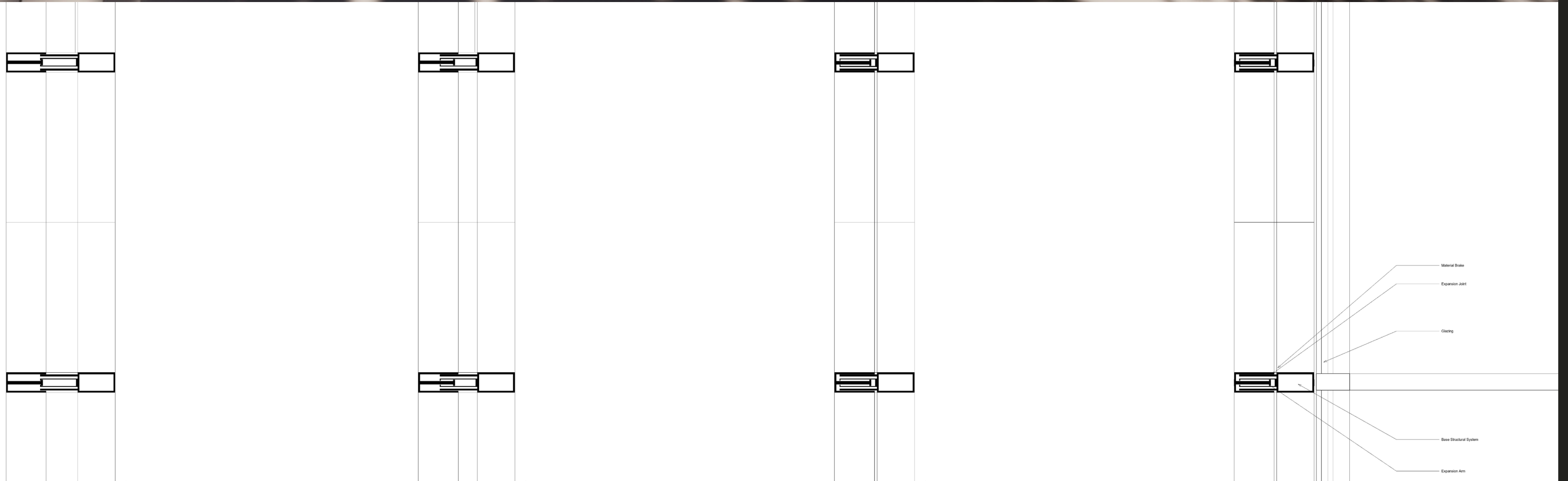
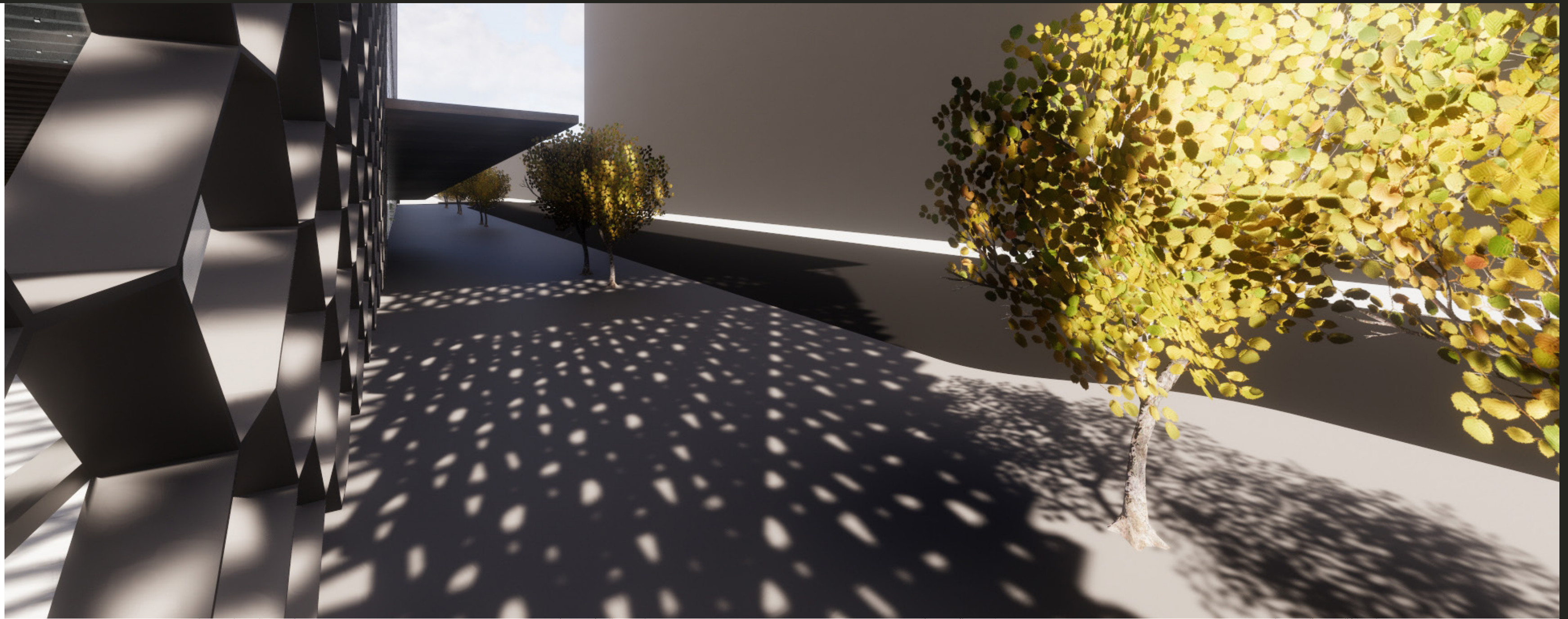




BUILDING EXPERIENCE

FEEL



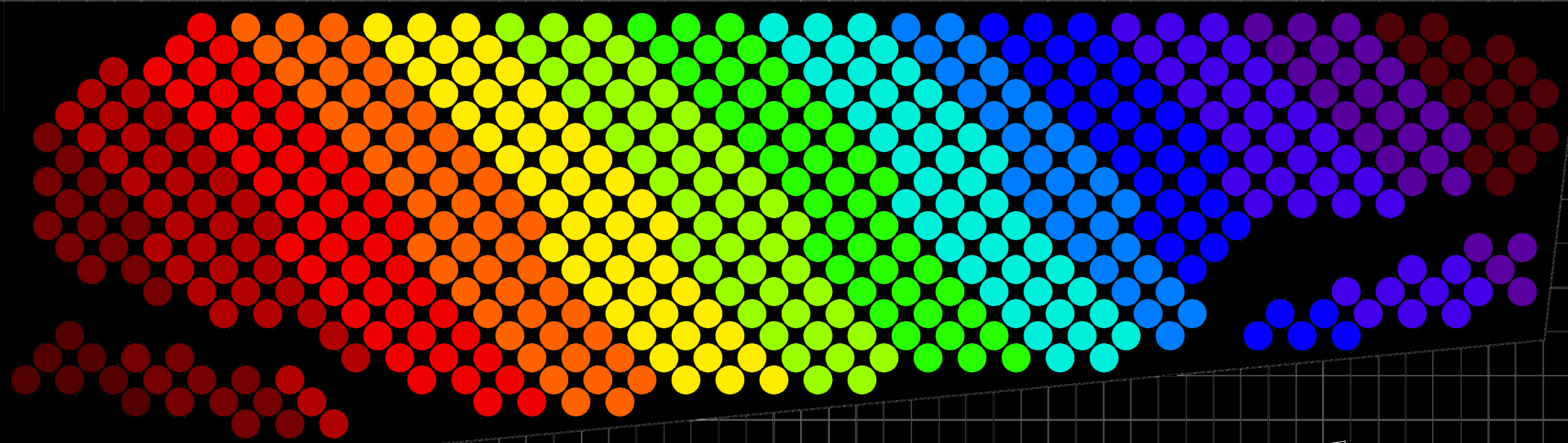
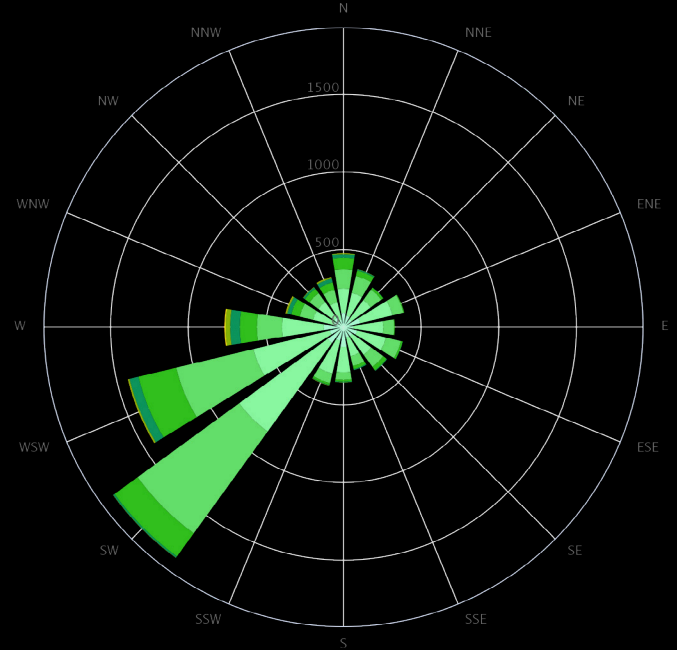
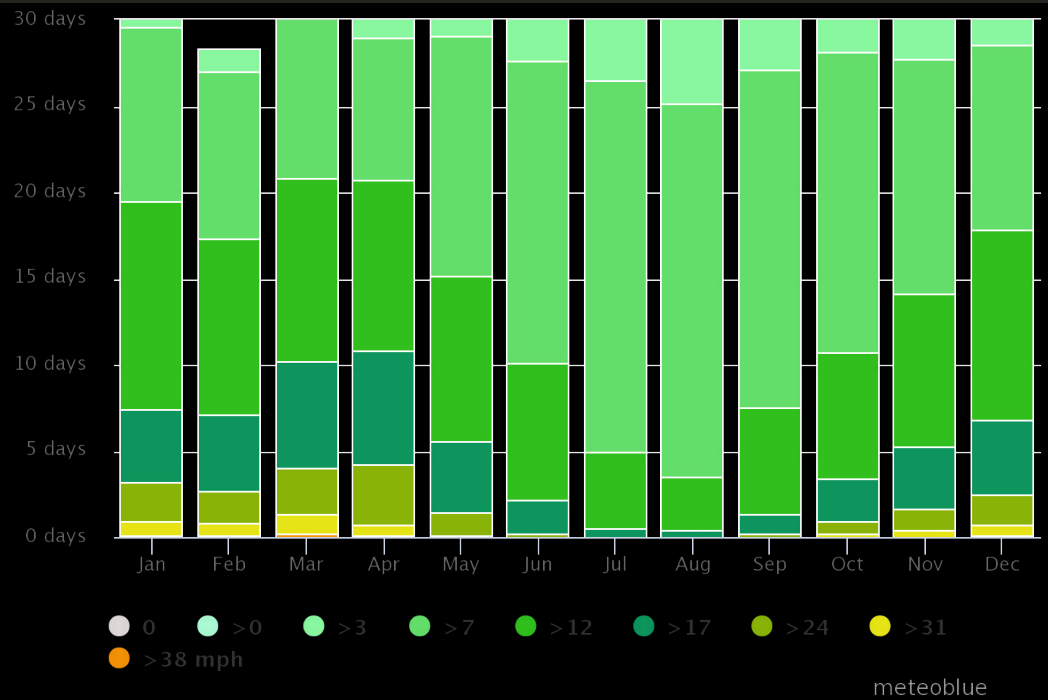


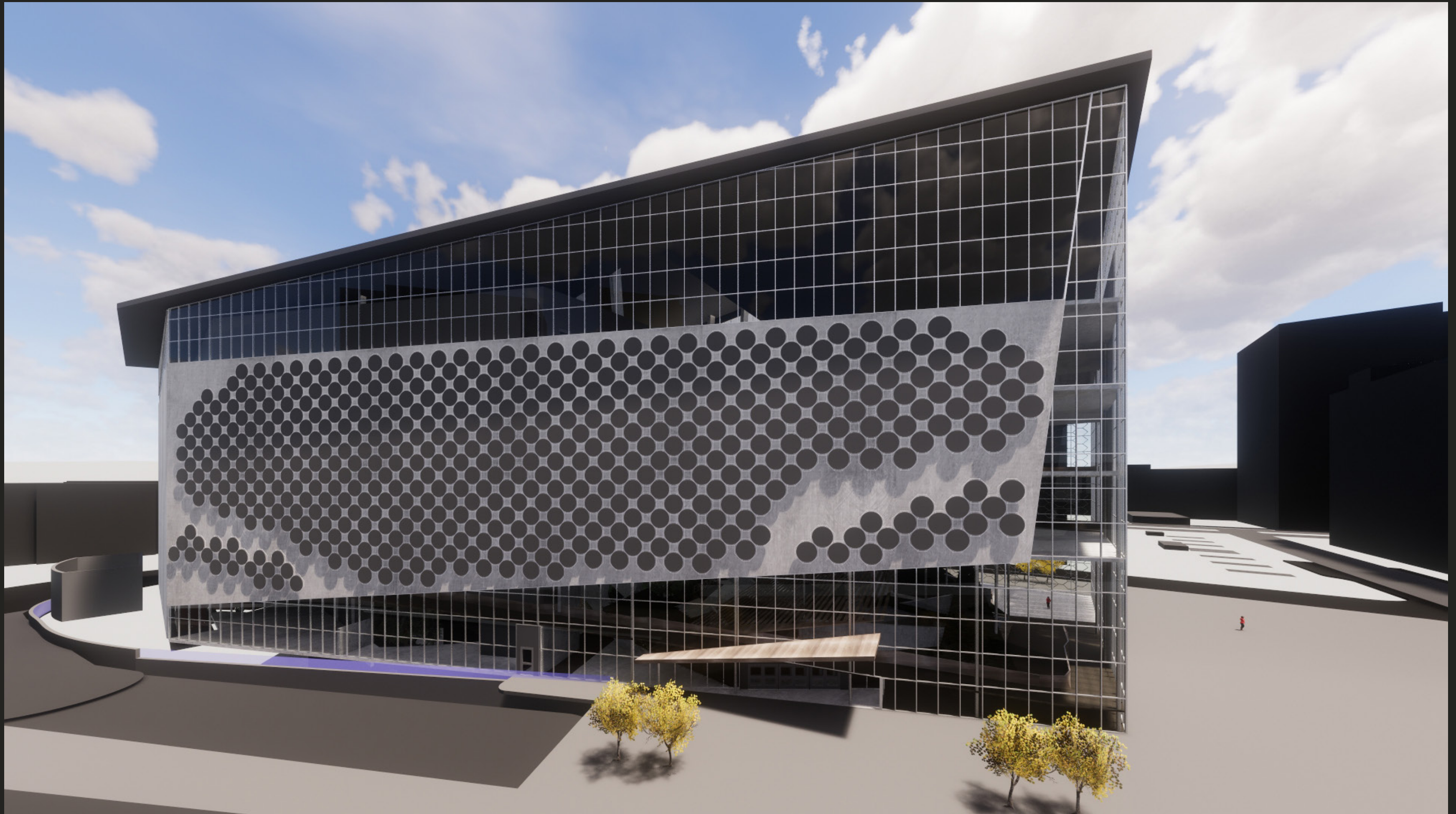
SOUND

The Color of Sound

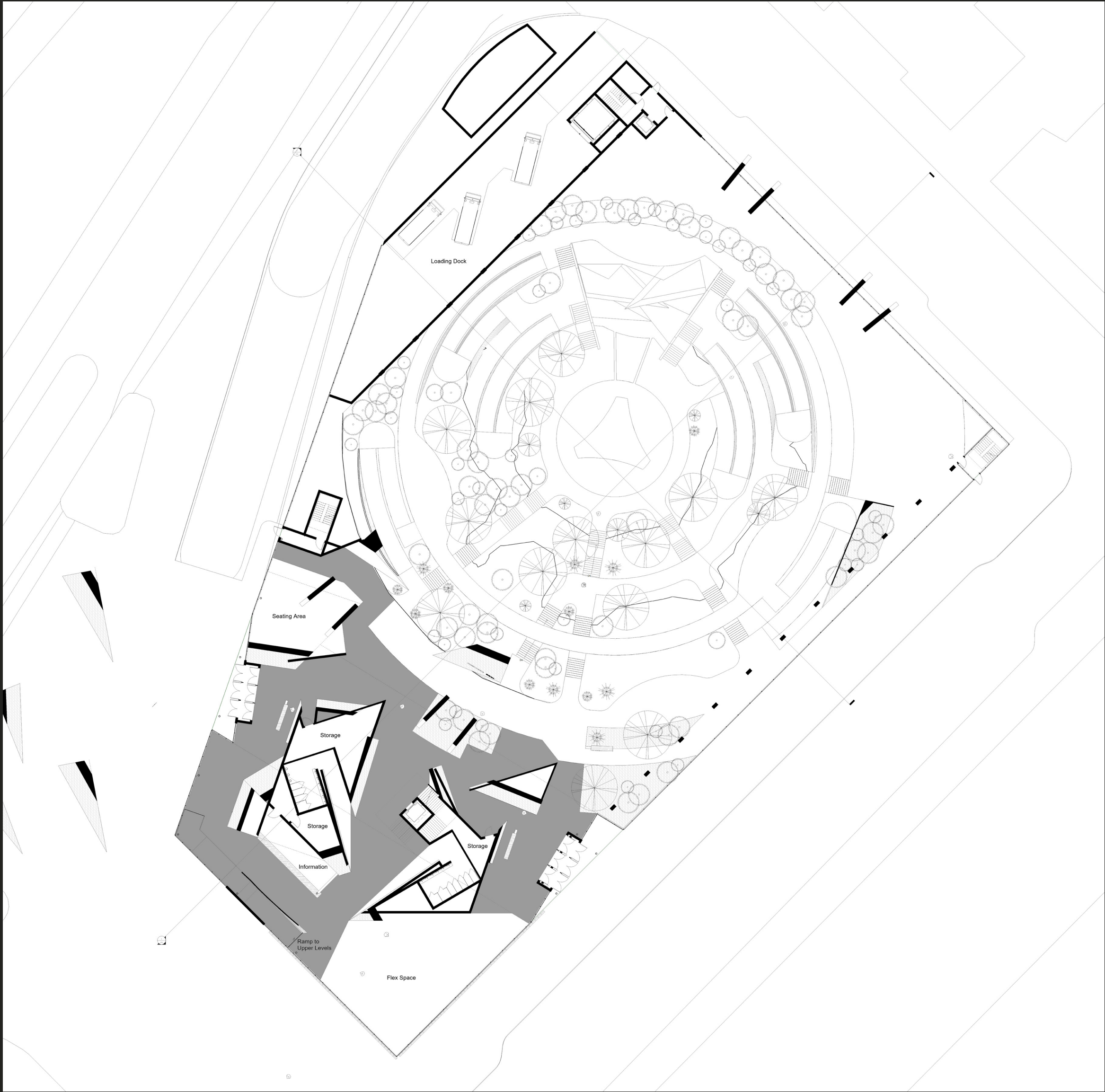
Sound	Frequency (Hz)	349.2	370.0	392.0	415.3	440.0	466.2	493.9	523.2	554.4	587.3	622.2	659.3	698.5	
Wavelength (cm)	98.88	93.33	88.09	83.15	78.48	74.07	69.92	65.99	62.29	58.79	55.49	52.38	49.44		
	F₄	F₄[#]	G₄	G₄[#]	A₄	A₄[#]	B₄	C₅	C₅[#]	D₅	D₅[#]	E₅	F₅	F_{4&5}**	
Light	Frequency (THz)	384.0	406.8	431.0	456.6	483.8	512.5	543.0	575.3	609.5	645.8	684.2	724.9	768.0	
	Wavelength (nm)	780.8	736.9	695.6	656.5	619.7	584.9	552.1	521.1	491.8	464.2	438.2	413.6	390.4	
RGB	Dec/Hex	Red 82/52 Green 0/00 Blue 0/00	116/74 0/00 0/00	179/b3 0/00 0/00	238/ee 0/00 0/00	255/ff 99/63 0/00	255/ff 236/ec 0/00	153/99 255/ff 0/00	40/28 255/ff 232/e8	0/00 255/ff 255/ff	0/00 124/7c 255/ff	5/05 0/00 255/ff	69/45 0/00 234/ea	87/57 0/00 158/9e	85/55 0/00 79/4f
CMY	Dec	Cyan 173 Magenta 255 Yellow 255	139 255 255	76 255 255	17 255 255	0 156 255	0 19 255	102 0 255	215 0 255	255 0 23	255 131 0	250 255 0	186 255 21	168 255 97	170 255 176
CMYK	Dec%	Cyan 53 Magenta 98 Yellow 96 Black 11	40 100 98	11 100 96	1 100 95	0 82 96	3 8 94	54 0 98	80 0 100	69 0 42	98 64 0	99 96 0	99 95 0	92 94 0	73 100 20 2
HSB (HSV)	Degrees	Hue 0 Sat 100 Brightness 32	0 100 45	0 100 70	0 100 93	23 100 100	56 100 100	84 100 100	111 100 100	175 100 100	211 100 100	241 100 100	258 100 92	273 100 62	304 100 33
YIQ (NTSC)	Dec	Luma 25 In-phase 124 Quadrature 109	35 135 112	54 153 119	71 171 125	134 162 101	215 144 65	195 111 49	162 77 38	176 28 70	102 42 107	31 60 140	47 83 144	44 100 134	34 113 121

**The F_{4&5} column provides a combination of the F₄ and F₅ colors. This is useful when a cyclic display of colors is needed, to avoid a jump in color between F and F[#].
 This chart was developed by Nicolas Melendez and Clint Goss. See www.Flutopedia.com/sound_color.htm for more info. Updated: August 20, 2016



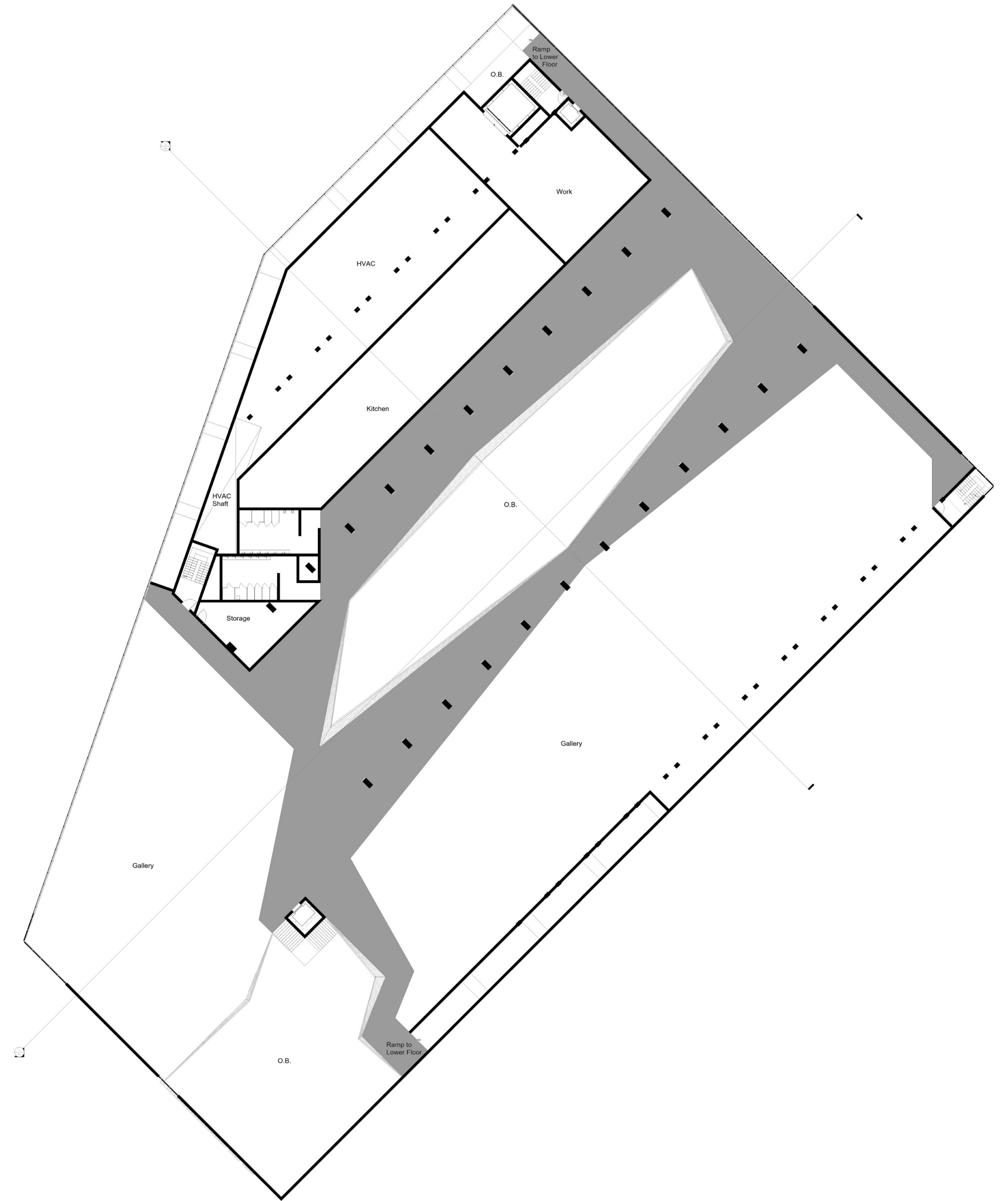
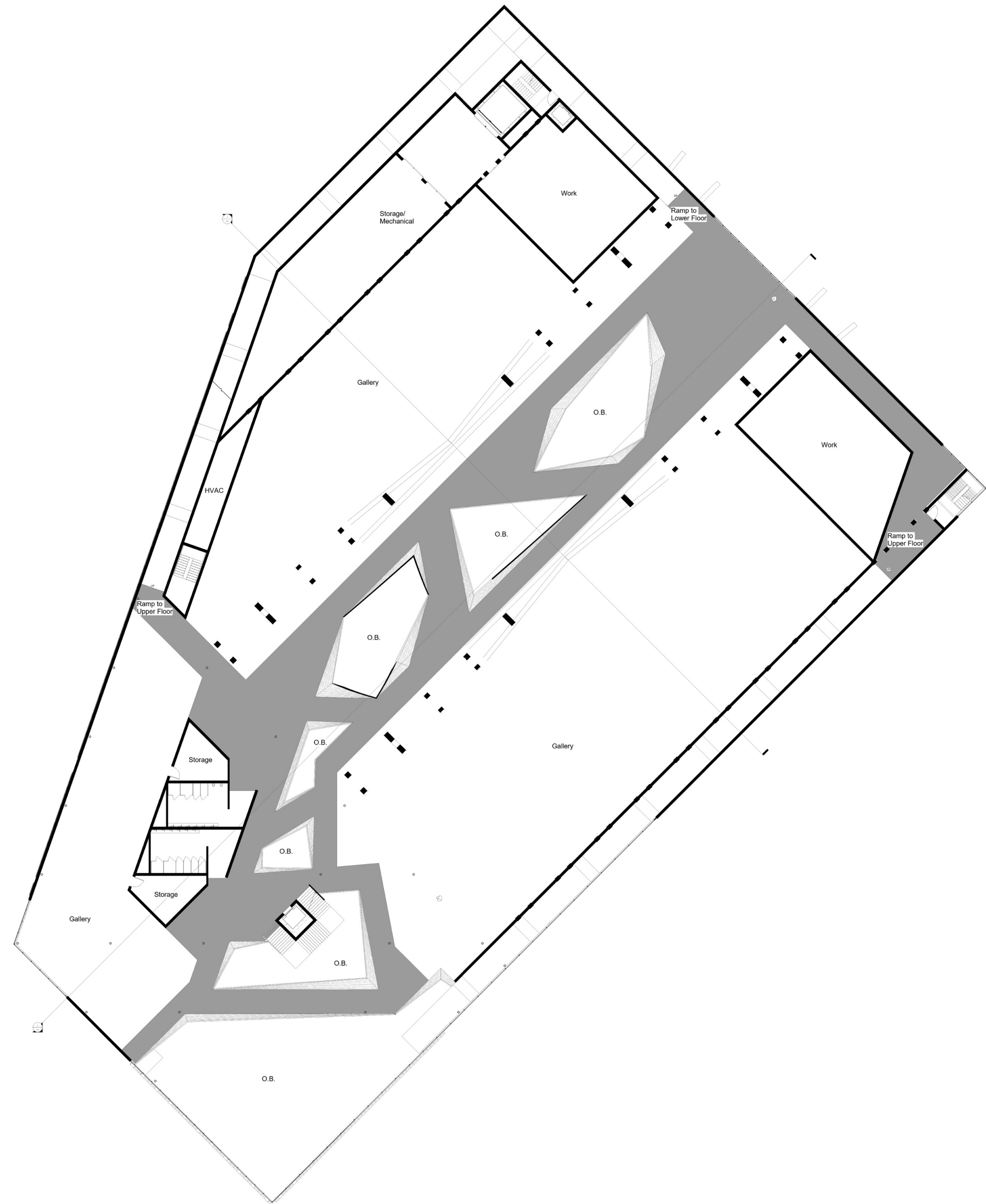


CLEANSING



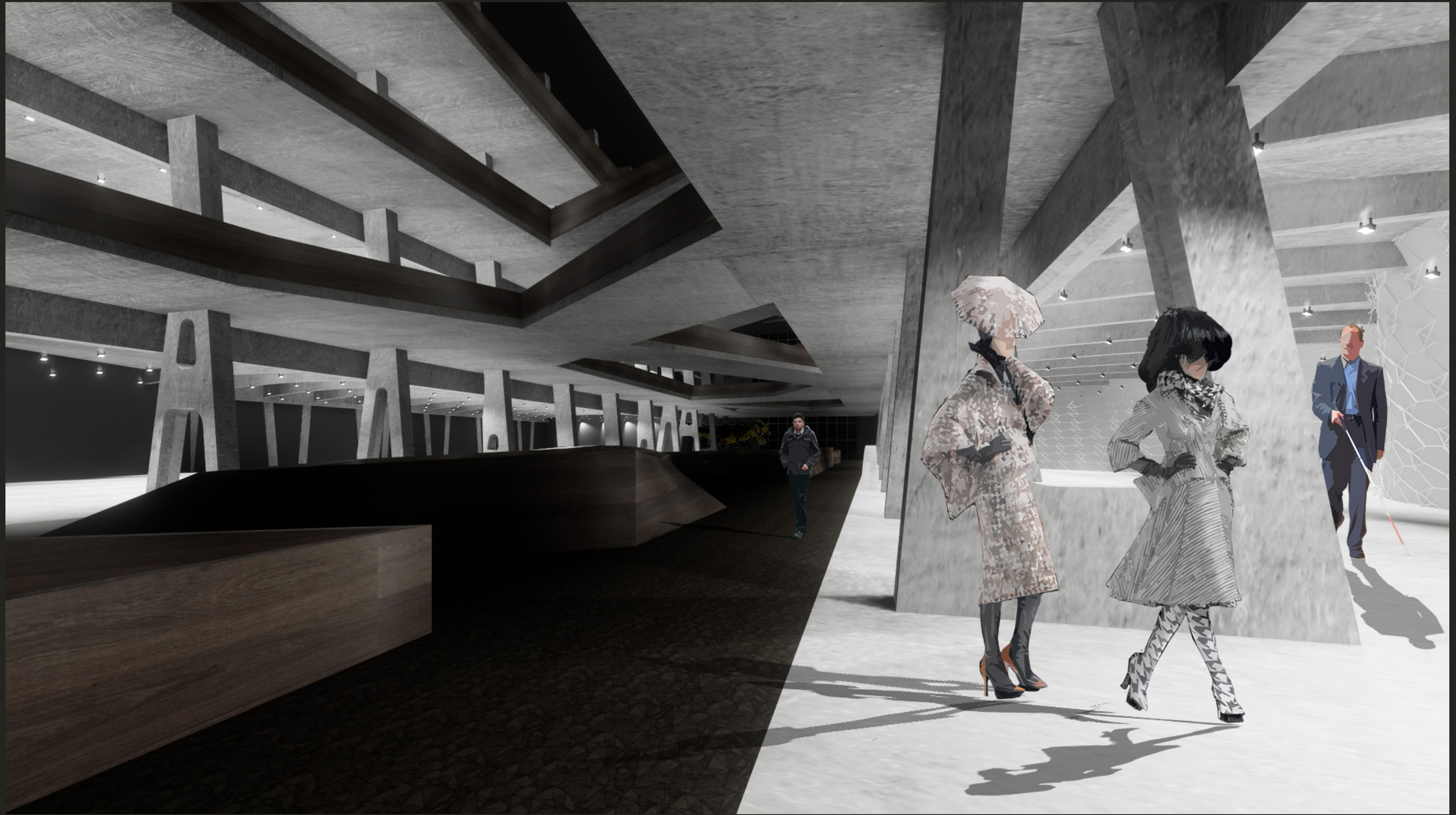


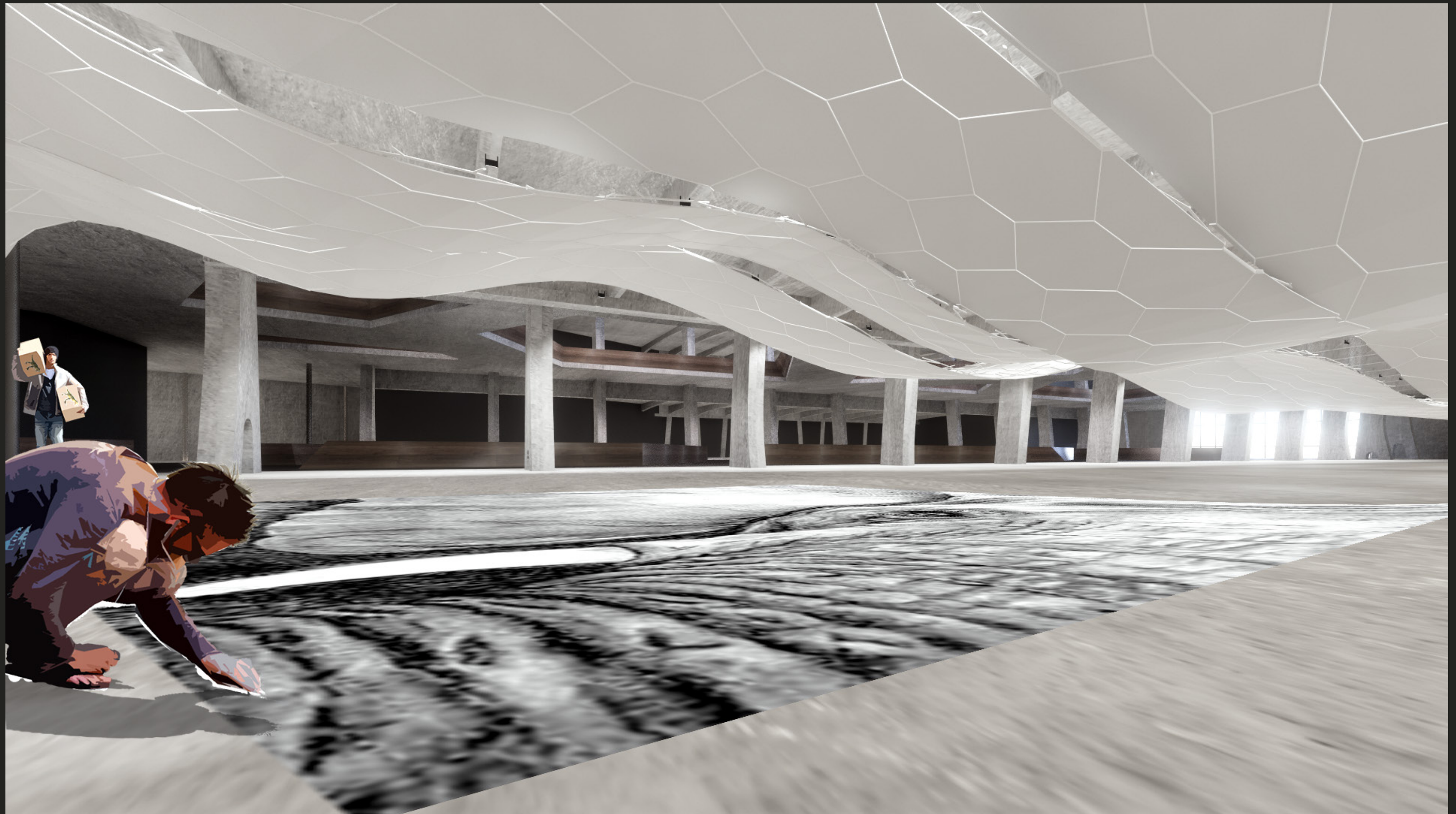












STRUCTURE



