

The Spectrum

Vol. XLVI, No. 9

North Dakota State University, Fargo, North Dakota

November 2, 1966

Defeated By One Vote

Motion Made To Abolish Senate

A motion that Student Senate be abolished was defeated by one vote at Sunday night's senate meeting.

After the defeat of the motion four members of senate walked out of the meeting.

The motion given by Randy Buresh AS 4, was precipitated by a report from Alan Butts AG 4, commissioner of publications. The report stated that as of Nov. 7 the Commission of Publications would be abolished in favor of an administration formulated Board of Publications.

Financial and administrative restrictions of the new purchase order system instituted for activities fees were listed as reasons for the movement of the board of publications into the University administration.

Butts stated that the new board was already approved by President H. R. Albrecht, Dean David Young and the Commission of Publications.

John Schneider AS 4, commissioner of legislative research, stated that such a board could not go into effect without a constitutional amendment which would have a student body election.

Schneider warned senate that if this board was approved it would take away from senate any control over the campus publications. Butts' report was voted down

by senate. Butts then informed Schneider that the Board would go into effect whether or not senate approved it.

Buresh then made his motion under the first item of new business that Student Senate be abolished. Vice-president Bob Challey CH 3, stated that senate could not pass such a motion but that it would have to be taken to the students.

Doc Buchanan AS 2, then interjected that if it were left up to the students, senate would surely be abolished.

Schneider supported the motion stating, "Senate is no more than a rubber stamp for the administration. They expect us to run things like their hideous Sharivar and yet deprive us of control."

Challey said that senate had no choice as they were directly answerable to Dean Young.

"I'm sorry," Schneider answered, "I was under the impression that senators were answerable to the students who elected them."

Larry Fuglesten AS 3, said that if senate passed this motion "It would look as if senate didn't have enough brains to run their own organization."

Butts stated that the motion was childish. "You're acting like a bunch of two year olds."

Schneider reminded senate that the motion was only in protest to the administration. "The motion may be childish but if you want to be heard you make a lot of noise."

The motion was finally brought to a question and the abolishment of senate was defeated by one vote with six senators abstaining.

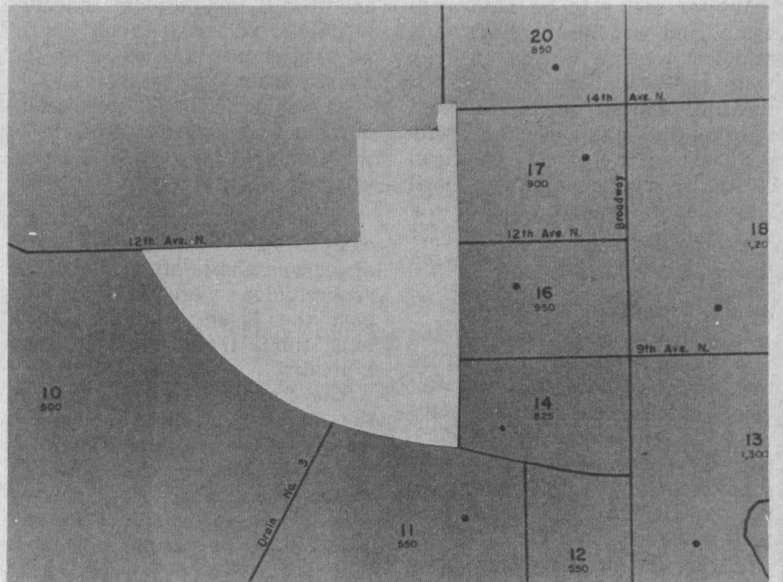
After the defeat Greg Kapaun

AS 3, Chuck Comstock AS 4, Buresh and Schneider walked out of the meeting.

At the same meeting a motion was passed to send a letter to Northern Transit requesting that the letters NDAC be changed to NDSU on the buses.

A report was given from the University Regulations Committee by Rodger Wetzel CH 4. He stated that this was one board that the administration would not be on. The announcement was met with applause from the senate.

The next meeting will be held in Weible hall "to bring senate to the students as the students won't bring themselves to senate."



VOTERS ON CAMPUS will be casting their ballots in Fargo's 15th precinct which is depicted in white on the above map. The precinct is bordered on the east by University drive.

Polls Open Next Tuesday On Campus At Festival and West Court Laundry

Polls will be open in Fargo from 9 a.m. to 7 p.m. on Tues., Nov. 8. Most of the faculty and administration and over 1,000 students are eligible to vote in the state elections.

However, three-fourths of the students over 21 are not Cass County residents and must cast absentee ballots in their home counties if they wish to vote.

Resident requirements dictate that an eligible voter be a resident of the state one year, of the county 90 days (anyone who moved into Cass County at the beginning of Sept. is not eligible) and of the precinct 30 days.

Students, particularly married students, who are in doubt as to whether they have established residence may contact the states

attorney's office. Anyone who is claimed as a dependent some where else is not an eligible voter here.

"In many cases of eligibility it becomes a matter of intent to establishing residence," reports a representative of the states attorney's office.

Most of North Dakota State University which is within the Fargo city limits is included in the 15th precinct (see map). The polls for this precinct will be at Festival Hall.

Polls for those outside of the city limits will be located in the West Court Laundry Building.

Winners Advance In Bowl; Play To Continue Sunday

Five teams will participate in the final rounds of college bowl competition next Sunday, Nov. 6, from 1-3 p.m. in the Ballroom, Union.

In order to qualify, four of the teams each defeated two opponents. The fifth winning team drew a bye and also defeated a team.

Kappa Alpha Theta defeated Gamma Phi Beta 165-0 and Sigma Nu 80-30.

Weible Hall beat Sigma Alpha Epsilon 165-145 and Dinan-Ceres 170-30.

Theta Chi defeated Kappa Delta 115-70 and Sigma Phi Delta 90-80.

Kappa Kappa Gamma beat Sigma Chi 200-125 and Phi Mu 230-115.

Farm House defeated Alpha Gamma Delta 80-65 in the first round and drew a bye in the second.

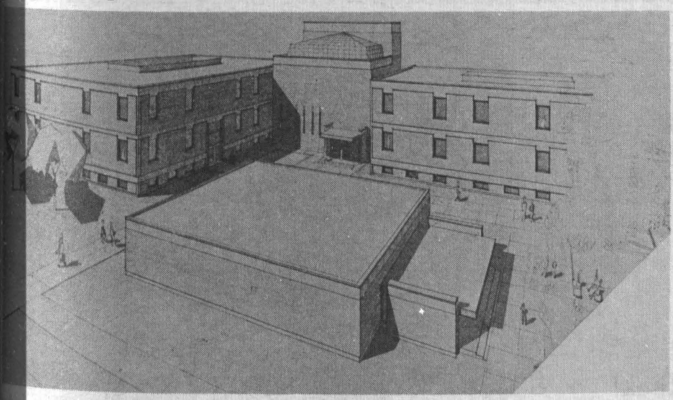
The questions used, drawn up by Dr. Catherine Cater, covered topics including science, mathematics, history, geography, philosophy, economics, current affairs, music and English literature. Quick recall in answering questions was an important factor in the success of the teams, according to Dr. Cater.

Doc Buchanan AS 2, was chairman of the 16 teams, each consisting of four members. The teams were entered by sorority or fraternity houses and dormitories.

According to Buchanan, participation was greater last year. He also stated that some of the groups were at a disadvantage because they specialized in one particular field.

A \$25 certificate to be used at the Varsity Mart will be awarded the winning team along with a traveling trophy.

Last year's college bowl was won by Alpha Tau Omega.



ARCHITECT'S CONCEPTION of North Dakota State University's new biological sciences building is shown at upper left. Construction on phase one, the left and center portion of the rear complex, will begin immediately. Phase two construction awaits approval of state funds. The buildings will be located behind Sheppard arena in the position designated by the white arrow.

As I See It . . .

Winter seems to be here once again and as Sports Illustrious said last week it is time to keep your noses indoors for fear of freezing. Actually during the next ten months, or however long winter lasts in the Great American North, everyone might as well stay indoors snugly tucked under their electric blankets for they won't miss much by braving the outdoors.

RAVE REVIEWS

In recent weeks, milk-producing Silo Tech has been basking in the glow of national publicity. But as delighted as the local populace were to entertain the writers, they were equally irked by their products. Oh, how the view from the outside hurts, no matter how true it may be.

STAMP OUT STUDENT SENATE

While the University's image may not be faring too well, even though it is not because they have not been trying, neither is that of our powerful rubber stamp Student Senate. About the most productive thing they have done in the past two years is consider a motion to stamp themselves out.

The move would have succeeded too if the AGR block hadn't followed form and refused to take a stand. Well Senate is still here

and it will undoubtedly continue to do the administration's house-keeping chores, like clean up the nausea after Sharivar.

Along these lines the cream-puffs have added a receptacle to the Union to help keep it clean.

SUPPORT AS USUAL

Last spring this poorly read campus newsletter took a stand against emphasis on football. The repercussions were the most support the Bison have seen in a long time. Last weekend was typical.

The President was in Nigeria, the majority of the Teammakers were making tea, the cheerleaders were cheering themselves to sleep, the band was playing around and the students weren't doing much per usual.

It was really disheartening to both the few loyal fans and the team to see so few rooters watching one of the better games of the season. The drive wasn't that long, and the cops were few along the route but somehow those very same people who defended the vast expenditures on preserving the herd were not heard.

The small band who make up the band were not missed that much, for wherever they go their marching and playing is by com-

Tanfield Miller



parison to our opponents as bad as the team is good. But whether they are lousy or not is not as important as the fact that whether the game is in Abilene or Vermillion, no one seems to worry about sending them and if they had the chance they probably wouldn't want to go anyhow.

TIME MARCHES ON

Rumors have been circulating all week that at long last a group of interested students are tired of having Student Senate drag their feet in circles to the beat of the Old Main March and have taken it upon themselves to do something about something no one has bothered to do; CHANGE THE REGULATIONS.

Though there is a student committee working on the very same rules and the AWS, not to be confused with the Association for White Supremacy, has also thought about looking into the little blue book. These boys are tired of everyone looking into everything and not doing anything.

DEMONSTRATE?

In a two-pronged attack they are circulating petitions to have the administration stop giving round-about answers and face the issue of extended dorm hours. It seems that some members of the administration claim that the students have not demonstrated a desire for this change. By next week there should be some demonstration.

Branching off on another branch, the group has enlisted some legal support. It seems that if the administration doesn't want to do anything about the violations of our legal rights maybe the courts will.

Benjamin Franklin one wrote, "We must all hang together or we will most assuredly all hang separately." It could be that such is the state of affairs right now at Agricultural State. Wrong? Right!

HIS found at



h.i.s
 Press-Free Post-Grad Shirts and Slacks
 DACRON adds the extra wear power
65% DACRON POLYESTER, 35% COMBED COTTON

New Monthly Series In Poetry Instituted By Four Instructors

An audience of more than 100 was in attendance when Robert Bly inaugurated a monthly program in poetry at North Dakota State University on Oct. 18.

Bly lives at Madison, Minn. He edits his own poetry magazine, "The Sixties." Through this magazine Bly is credited with introducing many American readers to works of European, especially Scandinavian, poets.

In the first part of his program, Bly read from his own works as well as Chippewa, Chinese, Spanish and Arabic translations.

In 1965 Bly organized a series of read-ins in opposition to this country's participation in the Viet Nam war. These read-ins began in the West and were staged in colleges throughout the country.

The latter series started at Harvard and progressed to the University of Minnesota. The second part of Bly's program consisted of poems from these read-ins.

Bly traveled throughout Europe on an Amy Lowell Poetry Fellowship, and recently he published a collection of poems, "Silence in the Snowy Fields."

"Poetry North," according to Richard Lyons, one of four poets on campus originating the new

program, will invite one visiting speaker each month. The program is free and open to the public.

Lyons and the three other originators of "Poetry North" tentatively plan a poetry and jazz program for Nov. 15. The others are Tom McGrath, professor in English; Jack Beeching, poet in residence from England and Anthony Oldknow, also an Englishman and faculty advisor for the new campus magazine "Shop-craft."

Carlson's & Larson
 Optometrists - Contact Lenses
 702 Center Ave. - Moorhead
 Phone 233-1624

A Different Steak
 Special Every Week
 \$1.10
 Dessert and all
 trimmings included
BRIGGS WOODS
 915 Main Ave., Moorhead

This is the Cricketeer Total Look!
 Award winning coordinates for young men

Cricketeer knows how to put an outfit together that really looks like an outfit. A handsomely styled sportcoat, contour shaped slacks and a sweater. And, they're all perfectly coordinated in color, fabric and texture to look better than any outfit you've had on before. Cricketeer has won the Caswell/Massey Fashion Award for coordinates two years running. It's unmistakable. It's the Cricketeer "Total Look".

CRICKETEER® Coordinates from \$39.95

other Cricketeer Sports Coats \$69.95

Briar Shop
 NORTHPORT
 Clothiers FARGO

All Students Are Invited To Exhibit At Art Show

Students, grad students and part-time students are invited to enter original artwork in the first annual Fall Student Art Show. Sponsored by the campus YMCA, the show will be held in Hultz Lounge in the Union Nov. 21 - Dec. 2.

Any North Dakota State University student may enter up to three pieces of artwork in drawing, painting, sculpture, pop and art or mixed media categories.

Dave Alm AE 2, chairman of the YMCA Art Committee said the purpose of the art show is not to compete with the annual spring art show put on by Mortar Board, but instead "to give students a chance to exhibit their works in the fall, and to promote more interest in art on the campus in general."

On The Social Scene

Engagements
 Rosemary Schwoebel (HE 3) to Lowell Linderman (AS 4)
 Carol Marek (HE 3) to Alan Nelson
 Joann Liste (St. Luke's) to Jim Nelson (TKE)
 Marilyn Kolstad (AS 4) to Dick Robertson (AS 3)

Pinnings
 Carol Stabo (KD) to Wes Bettel (TKE)
 Rose Lonski (Kensal) to Gary Davis (SPD)

Back in Circulation
 Freida LongMeir and Dave Dahle (ATO)

Alm added, "We wish to place the emphasis on 'student' in this show — it is sponsored by a student organization, run by students and only students may enter it."

Entry blanks and copies of the rules are available at the YMCA office, Room 206, South Engineering and at the main desk in the Union.

Cash prizes will be awarded to winners. More details will be published later.

CAMPUS NOTICES

Student Wives' Meeting
 Home Decorating Accessories will be the topic of the student wives' "More Imagination Than Money" class. The meeting will be held Thursday, Nov. 3, at 8 p.m. in Room 110 of the home economics building.

Dames Meeting
 A Christmas decorations demonstration by Mr. and Mrs. John Fehr will be featured at the Dames meeting, Wednesday, Nov. 2, at 8 p.m. in the Founders room of the home economics building.

Dance
 Alpha Phi Omega's "Ugly Man On Campus" dance will be held Friday, Nov. 11, from 9 to 11 p.m. in the Union Ballroom. Fraternities will sell tickets and a trophy will be awarded to the fraternity with the most sales.

Proceeds will be given to the Crippled Children's Home in Jamestown.

Camera Club
 Persons interested in photography

Now TGIF

Gaslight Cafe Rescheduled To Fridays

The Gaslight Cafe, located in the Bison Room of the Memorial Union, gets a new name as plans are being set to revise its schedule.

The schedule, 2:30 to 4:30 every Wednesday afternoon, will be abandoned by the dance committee of the Student Union Activities Board.

It was felt by the committee that there wasn't enough interest on the students' part, especially during mid-term week.

Plans are now being made to change the name of the cafe to Thank Goodness It's Friday Cafe. The time schedule will be from 2:30 to 4:30 every Friday afternoon.

Weekly entertainment will continue to include folk singers, poetry readers and old time movies. Most of the entertainment is hoped to be local campus talent.

It was the consensus of the committee that Friday would be a better day because students would have more leisure time and could forget their studies for that time, since there are no classes the following day.

A dance in the Valley Room may be scheduled every month if enough interest is shown.

The TGIF Cafe will be open during these dances so students may buy a snack and relax in its atmosphere.

YOU WILL ENJOY
 SHOPPING OUR STORE
Northern School Supply Co.
 NP Avenue and 8th Street
 Fargo, N. Dak.

WE'RE
 BEHIND
 THE TEAM

NDSU BARBER SHOP
 Appointment or Drop-in Service
 DIAL 232-3134
 5 Barbers Monday through Friday
 8:00 a.m. to 5:30 p.m.
 downstairs Memorial Union



For the very
 Finest in Italian
 Pizza, meet your
 friends at

**UNIVERSITY
 PIZZA SHOP**

813 N. University Drive — Dial 232-2495

Mammoth

Book and Record

BY NOW

for

CHRISTMAS

The
Varsity Mart

has again purchased many

REMAINDER BOOKS & PROMOTION RECORDS

at great discounts

Which means

GREAT SAVINGS

for you

MANY

MANY

TITLES

*Varsity
 Mart*



MEMORIAL UNION



Editorials

Individual Vote Is Vital To Voice Of Education

At the polls is one of the few places our society gives the student an opportunity to have a direct say in the world outside the campus. Granted, only about a quarter of the students are legally of age to vote, but these 1,000 votes are therefore all the more important as they also may represent the opinions of another 3,000 students. But even giving the students 1,000 votes is misleading as about three-fourths of them would have to vote absentee in some other area. Therefore, the political feelings of over 5,000 young educated minds who live here are being represented by about 250 votes. Every single one of these votes becomes very important to the students on campus and any one who is eligible to vote but does not, greatly adds to the loss of representation at the polls.

For the sake of the rest of the students we urge every qualified student to vote on Tuesday, Nov. 8.

Qualifications and polling places for students are described in a story on page one.

The faculty and administrative people of campus also are familiar with the needs and political best interests of the academic world. We as one mass of the educated people in North Dakota should have much to say about law making of the state.

The direction toward a greater political voice from the academic world is spearheaded on this campus by a number of our instructors. In the recent past, they have been taking a more active role in politics.

As a prime example, the head of the department of psychology at North Dakota State University, James Whittaker is running for a 21st district senate seat in Tuesday's election.

We applaud the actions of these instructors. The opinions of educated minds should not be confined to a narrow subject within a small office of one department while persons with less education run our politics and make our laws.

Every eligible voter on campus, student, faculty and administration, should make an honest effort to get his vote counted. It is vital in the effort to lift the academic voice to its proper place in the American political world. JVG

Educational Facilities Should Be Consolidated

That time of year is almost here again when the people of America flock to the polls for their biennial lesson in democracy.

With the spotlight on international affairs and spiraling inflation this year, one of the more important issues to we students and the people of North Dakota as a whole is likely to be overlooked once again.

This state suffers from decreasing population and lack of industry and consequently, with the added help of Mr. McCarney, has difficulty financing all the necessary projects from tax revenue.

With not much money allotted in the first place the state legislators make the problem more acute by spreading what little funds are available to too many institutions of higher learning. The end result is two universities of mediocre caliber and many more smaller colleges below that level.

The solution is obvious but so are the consequences. For woe be it for any state legislator who fails to stick up for his electorate to improve North Dakota College. It seems that while any person can see that fewer better colleges would be more beneficial than the present system no one is willing to risk his political neck to support such a proposition.

If the candidates for the legislature are really sincere in their pledges to work for the betterment of their constituents then they should introduce and support such a measure in the upcoming session. While some community's pride may be hurt by the loss of their college it would be hurt for a good cause: the betterment of the higher education facilities within the state and therefore the improvement of the State of North Dakota as a whole. TCM



The Spectrum
(Oldest Student Organization On Campus)



EDITOR in CHIEF
Joe Satrom

EXECUTIVE EDITOR

Jim Glynn

News Editor

Sports Editor

Photographer

Cartoonist

Faculty Advisor

STAFF: Ted Jacob, Ann Ludvigson, Noel Jordan, John Schneider, Sandi Scheel, Roxanne Trieglaff, Linda Borud, Rosemary Neuman, JeAnne Mittelstad, Marilyn Mathison, Sue Hall, Cheryl Grangard, Jennifer Roden, Rita Opp and Bert Mason.

The opinions stated in the *Spectrum* editorials are those of the editor and editorial board members and do not necessarily represent the opinion of the student body or administration of NDSU. The *Spectrum* is published every Wednesday during the school year except holidays, vacations and examination periods, at Fargo, N. D., by the NDSU Commission of Student Publications, State University Station, Fargo, N. D.

Second class postage is paid at Fargo, N. D. 58102.

Subscription rate \$1.00 per term.

MANAGING EDITOR

Tanfield Miller

Glenn Solberg

Neil Thomas

Alan Cecil

B. K. Lilja

Larry Chambers

Letters to the Editor . . .

By Vet Club Member

Cannon Decorating Termed Childish

To The Editor:

Recent escapades concerning the 90 mm cannon at the southeast corner of the Field House suggest that a letter to the *Spectrum* explaining the significance of this memorial is in order. The escapades to which I refer are: (1) the application of tar and feathers on homecoming weekend; (2) the application of red paint one week later.

Evidently there are persons on this campus who think the cannon was placed there to be decorated on weekends of home football or basketball games. Little do they realize that the cannon is a memorial to all students that have served, are serving or will serve the United State of America in one of the branches of the Armed Forces.

The cannon is not the property of the ROTC Department. It is the property of the North Dako-

ta State University Veterans' Club.

The Veterans' Club of 1957-58 thought it fitting to create a memorial to the servicemen. With the help of Lt. Col. Harry L. Snavely, the Veterans' Club secured an appropriate monument for the memorial.

The expense of having the weapon, a 90 mm anti-tank gun on a carriage, demilitarized, shipped and placed on the stand amounted to approximately \$670. The money was raised by the 200 members of the 1957-59 Veterans' Club, and the Fargo American Legion Post. Has anyone stopped to consider the expense of replacing this memorial at this time?

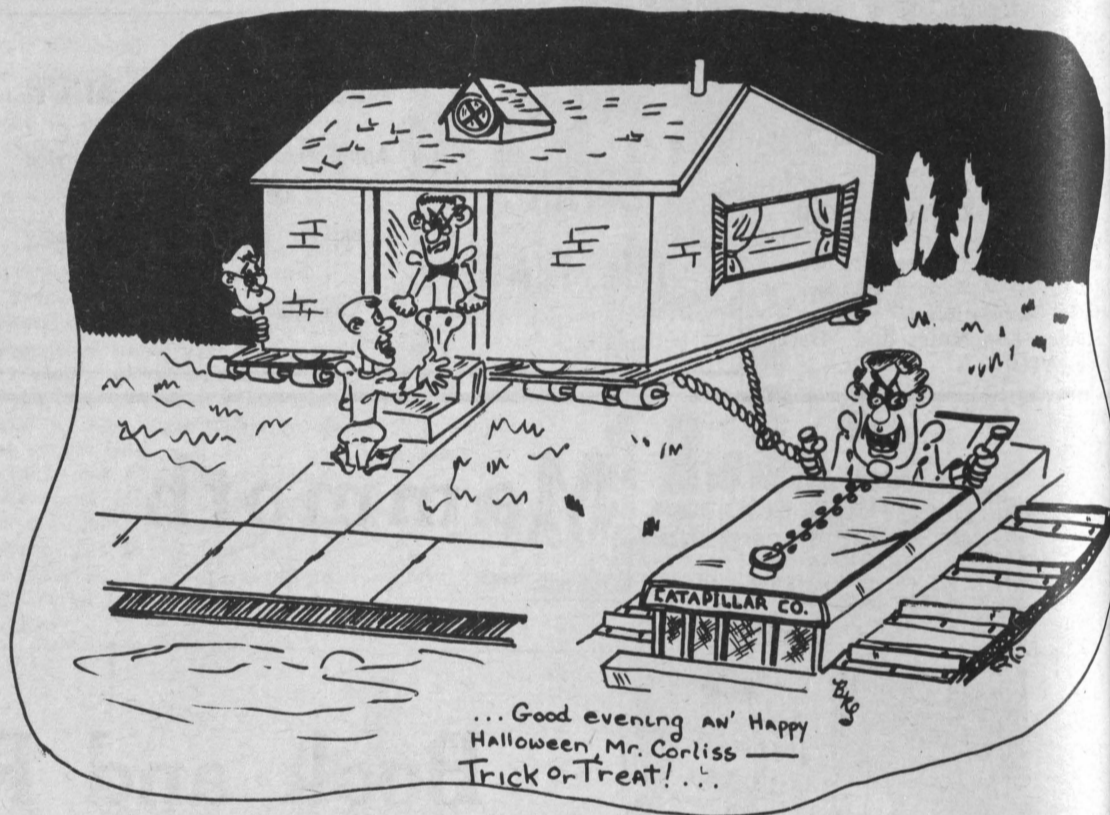
Has anyone taken the time to read the plaque attached to the memorial? For those who have not, I will include it in my letter. It reads:

"A memorial to all NDSU Veterans. May their contribution to college, state and nation help bring peace and brotherhood to mankind."

The cannon is a memorial to all past, present and future veterans. We don't doubt that the pranksters will become veterans, so it is also a memorial to them should they serve in the Armed Forces.

Keeping these thoughts in mind, that this memorial is dedicated to those who have served, are serving or will serve in the defense of the United States, we ask the students of NDSU to stop and think how childish these actions are for responsible adults.

Darrell K. Buck,
Publicity Chairman
NDSU Veterans Club



Speaking Out . . .

Health Center Actions Questioned; Roommate Is Not Relieved Of Pain

Cheryl Gambel, HE 3

Not being an authority on medical ethics, I can not list the North Dakota State University Health Center and its staff as incompetent; but I have along with several other students on this campus, encountered incidents that cause me to question the medical aid acquired there.

Citing one case in point, my roommate has had a history of peptic ulcers for five years and one evening enlisted medical help at the center during a severe ulcer attack.

Her pain was to the point of tears, and she was given a suppository along with a consoling pat on the head, told to go home and come back in an hour if she didn't feel relief.

Within that short span of time, our counselor and I had her in St. Luke's Emergency Ward, where she was completely examined and

registered in the hospital for a period of two days.

I dread to think of the further extent of her suffering had she not received proper treatment and hospitalization.

This is one of the many cases I have been told of or experienced myself, some more serious than others.

An acquaintance of mine complained of extreme exhaustion, accompanied by swollen glands. The Health Center diagnosed his symptoms as a bad head cold.

Upon consulting with his family doctor, he was found to have contracted infectious mononucleosis, which caused him to be absent from school for one quarter.

Another such case of a girl in the dorm illustrates similar mistakes. Upon complaining of an extremely painful toe, a coed was instructed by the center to soak her foot in cold and hot water alternately and to come back in

a week if relief did not come.

She, too, decided to check with one of the downtown physicians, who discovered that a bone in her toe was badly cracked. Shouldn't this have been discovered earlier?

I don't doubt that the NDSU Health Center has brought relief to many students, for major and minor ailments alike. Maybe most, or all, of these above cases can be explained in some manner by the staff or the center; I truly hope so.

But, considering these former points, where would you be likely to take your medical problems to the health center or to the clinic downtown?

(Editors Note: Jack and Jill went up the hill to fetch a pail of water. Jack fell down and broke his crown and the health center treated him for mono.)

Our Mailbag Runneth Over History Repeats Itself As The Once Hunted Bison Return To Haunt Sioux

To The Editor:

History is repeating itself as we see it from delving into the past and bringing it up to the present time.

At the turn of the century, the Sioux were a tribe of Indians west of the Missouri and the Bison roamed the plains. Food for the Sioux as well as poor sportsmanship on the part of the white hunter saw the Bison gradually diminishing in strength and being mercilessly harassed by the modern day Sioux.

The Sioux scattered all over the state and today we find them also well situated to the north of us at Grand Forks. There they have lived and grown stronger and more formidable than ever.

A few years ago some good-thinking people of our state got together and discussed the plight of the Bison. They realized that something must be done soon so they began to work on restocking the Bison in the western half of our state. The results of this project have been outstanding and a beautiful herd is something to be seen.

At the same time, some good sports-minded people got their heads together and decided it was high time to do something about the herd in the eastern half of the state because the Sioux were constantly harassing the once mighty Bison and ruining their chance of ever being able to safely roam this area again.

Just a few years ago the Quarterback Club, with the aid of other groups, began working with North Dakota State University. The first thing they did was to change the Bison feeding grounds from NDAC to NDSU. They then got a new herdsman by the name of Mudra. He and a pair of top

trail hands, Erhardt and Nystrom, plus some other good men, started to work on improving and enlarging our herd.

Last year this herd had grown and improved so much that they became nationally known. This new group of sires just could not be stopped; they trampled down all the barriers that were set up to stop them.

Even the mighty Sioux were put to flight by the onslaught of this fine herd. No longer is the eastern half of the state without the once great herd grazing peacefully in our midst, but ready to stampede over anything that gets in their path. This is evidenced by the second year in a row where they have flattened their foe with their thundering hooves.

Oh, what Zane Grey could have added to his book on the "Thundering Herd," if he had been living today. Yes, Tex Ritter, who sings the song about the "Great

White Buffalo," should also have been here. He may have seen this White Buffalo again as it appeared from nowhere and stood silently by, watching our new herd like it did in the legends of yesteryear.

We, the younger generation, can now more fully appreciate and understand the wonderful old stories of the once well-known Thundering Herd, for now we see it brought back to life with such force that the reverberation is heard throughout all of the states.

We recognize the fact that to be repetitious in speech or writing is not the best, unless you are trying to stress a point; but how can a person in our state help it when he is so engrossed in what this Thundering Herd is doing?

Written by the proud father of a student at this Sports Famous NDSU.

Harvey Gillund

Bubonic Plague Studied

The North Dakota State University Department of Veterinary Science is working in cooperation with the Federal Plague Laboratory, San Francisco, Calif., to screen closely related bacteria specimens of bubonic plague.

The possible related bacteria found by the veterinary department are forwarded to the federal lab.

Myron Andrews of the NDSU Veterinary Department stated that rodent fleas are the cause of the spread of the disease and that the disease is found in

Western United States commonly with prairie dogs, field mice and ground squirrels.

Bubonic Plague is commonly known as the Black Plague. People in the United States occasionally die from the disease when they come in contact with fleas of wild animals.

Dr. Andrews said that the most dangerous time is after animals have been trapped or poisoned, since the fleas will feed on man in absence of their normal host.

The program of research began at NDSU in July, 1966.

**INVENTORY REDUCTION
AUCTION**

**Used Motorcycles - Snowmobiles - Sportscars
PLUS
1 New 1966 Triumph Spitfire Sportscar**

Saturday, November 5 at 1:00 P.M.

UNIVERSITY MOTORS
1920 12th Ave. No.
Howard Borstad, Auctioneer
N. D. License No. 75

WANTED:

Nice young girl for despondent grad student in Electrical Engineering.

Application blanks may be picked up in Room 206, South Engineering.

This Ad Sponsored & Paid for by the COMMITTEE TO GET "UNCA" TIM MARRIED.

(Yer Darn Right This is a Real Ad!)

**DR. HARLAN GEIGER
OPTOMETRIST**

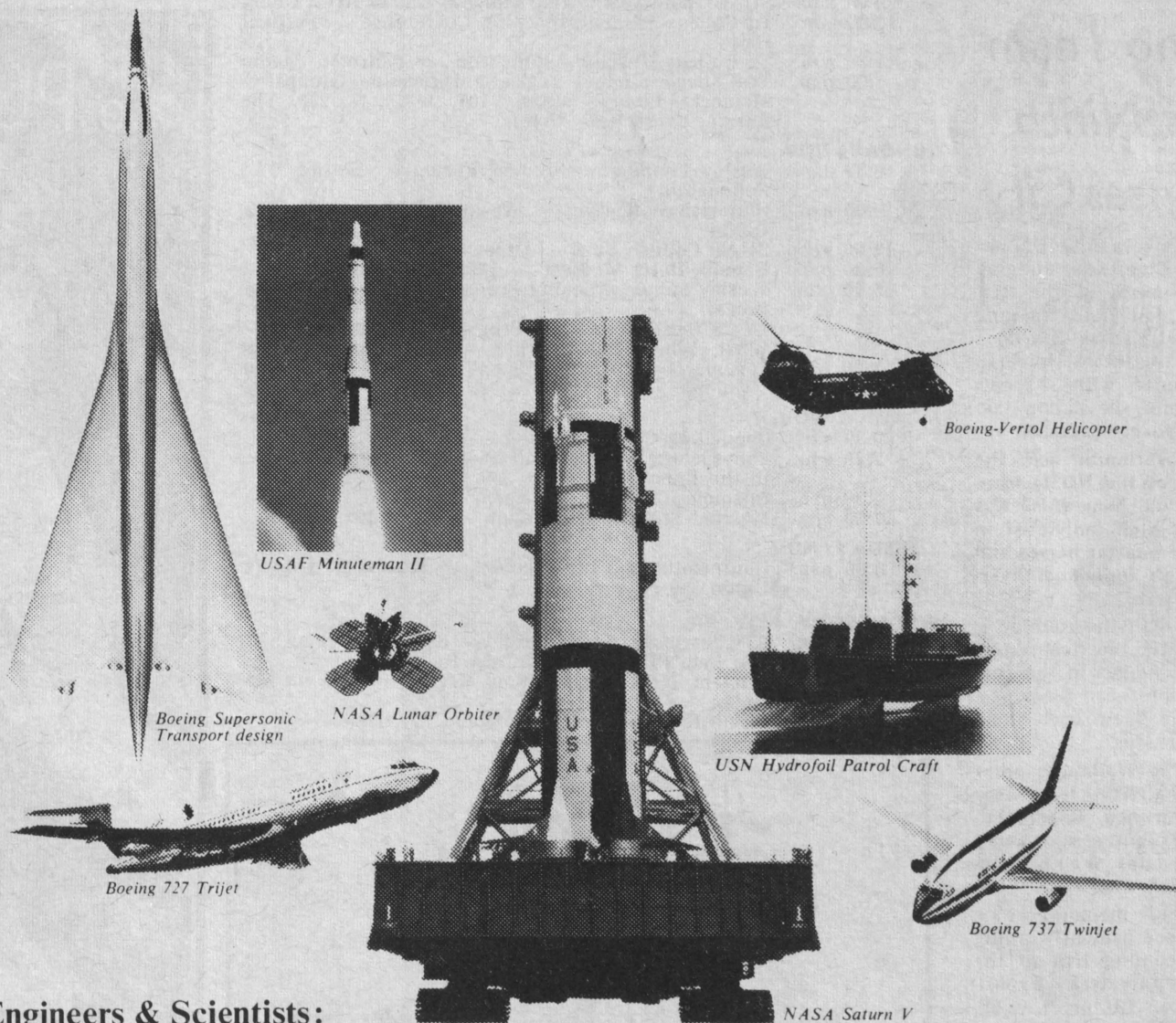
CONTACT LENSES
515 1st Ave. N. Ph. 235-1292

Rawlings & MacGregor

**EMERY
JOHNSON**

WHOLESALE OF ATHLETIC EQUIPMENT
7 S. Broadway
235-5361

Fifty years ago we only made 'aeroplanes'. (See what's happening now!)



Engineers & Scientists:

Campus Interviews, Thursday and Friday, November 17 and 18

In 1916 The Boeing Company's career was launched on the wings of a small seaplane. Its top speed was 75 mph.

Now, half a century later, we can help you launch your career in the dynamic environment of jet airplanes, spacecraft, missiles, rockets, helicopters, or even seacraft.

Pick your spot in applied research, design, test, manufacturing, service or facilities engineering, or computer technology. You can become part of a Boeing

program-in-being, at the leading edge of aerospace technology. Or you might want to get in on the ground floor of a pioneering new project.

You'll work in small groups where initiative and ability get maximum exposure. And if you desire an advanced degree and qualify, Boeing will help you financially with its Graduate Study Program at leading universities and colleges near company facilities.

Often it will be sheer hard work. But we think you'll want it that way when you're helping to create something unique — while building a solid career. Visit your college placement office and schedule an interview with our representative. Boeing is an equal opportunity employer.

BOEING

Divisions: Commercial Airplane • Missile & Information Systems • Space • Supersonic Transport • Vertol • Wichita • Also, Boeing Scientific Research Laboratories

Dr. Doolin Is Guest Lecturer

China Study Scheduled For SUAB

"China" will be the topic for discussion and study on Monday, Nov. 14, when the Student Union Activities Board sponsors a day-long program dealing with the people, places and ideas that make up that Asian country.

The event is to promote and extend international understanding beyond the scope of what might be called a "typical teach-in" by creating a learning situation through as many resources as can possibly be afforded and obtained.

Communist China contains the largest population on earth, dominates the largest continent and holds perhaps the greatest threat to the western way of life. To explore China to the fullest in one day, SAUB has booked for showing in the Union ballroom the Felix Greene film "China!"

This is the only major film by an American or British producer since the revolution.

A review by the "New York Post" said of the film, "Outstanding for its sense of color and beauty . . . intrusive for almost any American. It shows a mighty country and people moving fast. The photography is excellent, the commentary sensible."

A guest on campus during the day will be Dr. Dennis Doolin of the Hoover Institute, Stanford University. Dr. Doolin has studied for seven years in the Far East. He has served the United States

Government as a Consultant in Asian Affairs and is currently in charge of research on East Asian affairs at Hoover Institute.

If time permits, Dr. Doolin will also conduct a seminar in addition to his scheduled lectures on Red China analysis.

As an added feature, the Dakota Inn will serve a Chinese luncheon from 11:30 a.m. until 1:30 p.m.

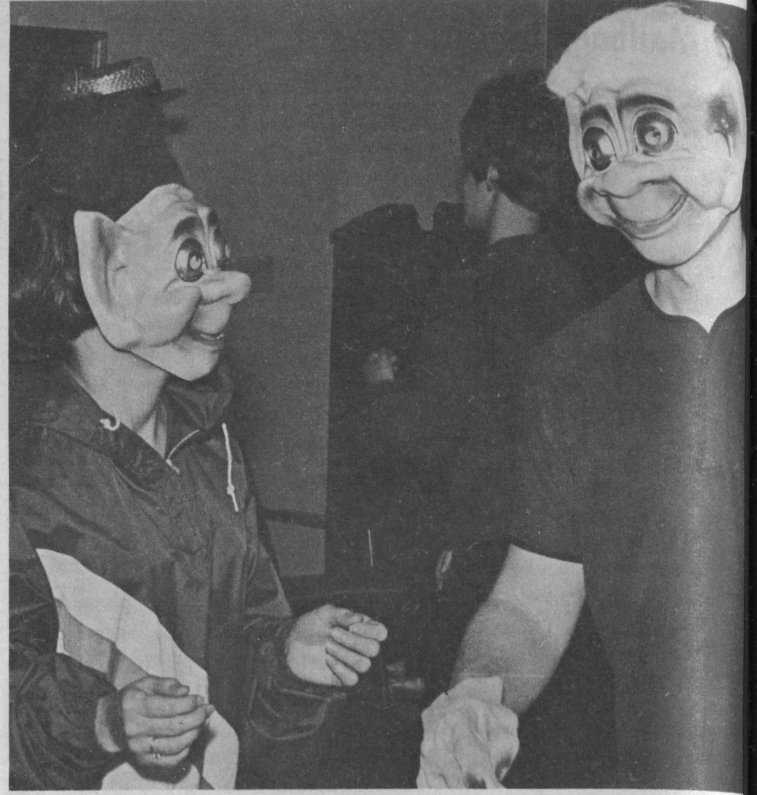
The tentative program schedule calls for the film "China!" to be shown at 10:30 a.m., 12:30 p.m., 3:30 p.m. and 6:30 p.m. Dr. Doolin will lecture in the ballroom

at 1:30 p.m. and 7:45 p.m. Other events to take place in the Union ballroom include a possible seminar at 2:30 p.m., a faculty lecture at 4:30 p.m. and a press conference at 8:30 p.m. An informal reception will conclude the day's activities at 9:30 p.m. in Hultz Lounge of the Union.

All programs will be free to students and faculty of North Dakota State University. There will be a 50c admission charge for others. Contact Union Program Manager Raymond Kril for reservations.

WEEKLY CALENDAR OF EVENTS

- WEDNESDAY, NOV. 2—**
 6:45 p.m. Libra Meeting — Room 102, Union
 7:00 p.m. Circle K Club Meeting — Room 227, Union
 ASME Meeting — Crest Hall, Union.
 7:30 p.m. Wesley Foundation Fireside — Wesley Foundation
- THURSDAY, NOV. 3—**
 3:30 p.m. Faculty Affairs Committee Meeting — The Forum, Union
 4:30 p.m. Department of Cereal Technology, Dr. R. Fulghum: "Anaerobic Techniques in Bacteriology Research"—Room 203, Harris Hall
 5:00 p.m. University Investors Club Meeting — Room 215, Morris Hall (Visitors welcome)
 7:00 p.m. Collegiate FFA Chapter Meeting — Town Hall, Union
- FRIDAY, NOV. 4—**
 12:30 p.m. IVCF Faculty Prayer Meeting — Forum, Union
 2:30 p.m. SUAB Gaslight Cafe — Bison Grill, Union
 7:00 p.m. Lutheran Student Council Games and Recreation Night — Field House
 7:30 p.m. Free Date Night — Games Area, Union
 8:00 p.m. Lutheran Student Congregation Entertainment — LSC
 8:45 p.m. SUAB Concert: Simon and Garfunkel — Field House
- SATURDAY, NOV. 5—**
 9:00 a.m. SUAB Table Tennis Tournament—Games Area, Union
 10:00 a.m. Tri-College Student Teaching Conference — Festival Hall
 11:30 a.m. Tri-College Teaching Luncheon — Ballroom, Union
 1:00 p.m. Tri-College Student Teaching Discussion Groups — Meinecke Lounge, Rooms 101, 102, 227, 233, The Forum, Crest Hall, Union
- SUNDAY, NOV. 6—**
 9:30 a.m. Wesley Foundation Student Forum — Wesley Foundation
 10:00 a.m. Unitarian Fellowship — Town Hall, Room 203, 233, Union
 12:00 noon SUAB College Bowl — Union
 5:00 p.m. Gamma Delta Meeting — 1258 Broadway
 5:30 p.m. Wesley Sunday Evening Program — Wesley Foundation
 UCCF Get-Together and Program: Sin, Sin, Sin, Sin—What, Whee, Whoa, Why? — 1130 College Street
 7:30 p.m. Cinema 66-67: "Two Women" (Italian) — Ballroom, Union
- MONDAY, NOV. 7—**
 8:30 a.m. Counseling Center Meeting — Room 101, Union
 9:30 a.m. Bacteriology Seminar: Lily Wang, "Vitamin Syntheses in the Rumen" — Room 309, Morrill Hall
 4:30 p.m. Intramural Meeting — Room 204, Field House
 7:30 p.m. Married Student Association — Room 101, Union
- TUESDAY, NOV. 8—**
 8:00 p.m. Housemothers' Club Meeting — Meinecke Lounge, Union
- WEDNESDAY, NOV. 9—**
 1:30 p.m. All Pharmacy Convocation — Ballroom, Union
 6:30 p.m. Tau Beta Pi Meeting — Crest Hall, Union
 7:00 p.m. Student NEA Organization Meeting — Room 102, Union
 Circle K Club Meeting — Room 227, Union



TWO APPARENTLY HAPPY TROLLS are Ann Ludvigson, HE 3, and George Hiner, CP 3, as they appeared at the Sigma Alpha Epsilon Halloween Masquerade party Friday night.

Judging Team Places Ninth At Kansas City

The North Dakota State University Senior Livestock Judging Team placed ninth at the 21st Annual Intercollegiate Judging Contest held at Kansas City, Mo., this year. Kansas State University took top honors with 24 teams from throughout the nation taking part in the competition.

Lawrence Wollmuth was the only member of the NDSU team to win individual honors. He was named fourth high individual in the judging of quarter horses and also ninth high individual overall in the contest.

Each college in the country is allowed to enter one team composed of five judges in the contest. In addition, each team usually brings one or two men along to act as alternates.

In addition to Wallmuth, other members of the NDSU team were Charles Troftgruben, Roger Halverson, David Jensen and Larry Griffin. Alternates were John Dilland and Bob Cook.

Twelve men, including the above seven, are presently trying out for the coming trip to the International Livestock Exposition at Chicago, Ill., on Nov. 26. The team will be named from these 12 men by Coach John N. Johnson around Nov. 18.

COBS OPTICIANS
 (FORMERLY LOHN)
 South Plaza
 1621 South University Drive
 FARGO, NORTH DAKOTA
 COMPLETE OPTICAL SERVICE
 CONTACT LENSES REPAIRS
 Ph. 235-5185

Taco's
Taco Shop
 MEXICAN FOOD

Giant Grinders





Char-Broiled Hamburgers

"SPEEDY SERVICE"
 420 NORTH UNIVERSITY, FARGO, NO. DAK.
 PHONE 232-7734

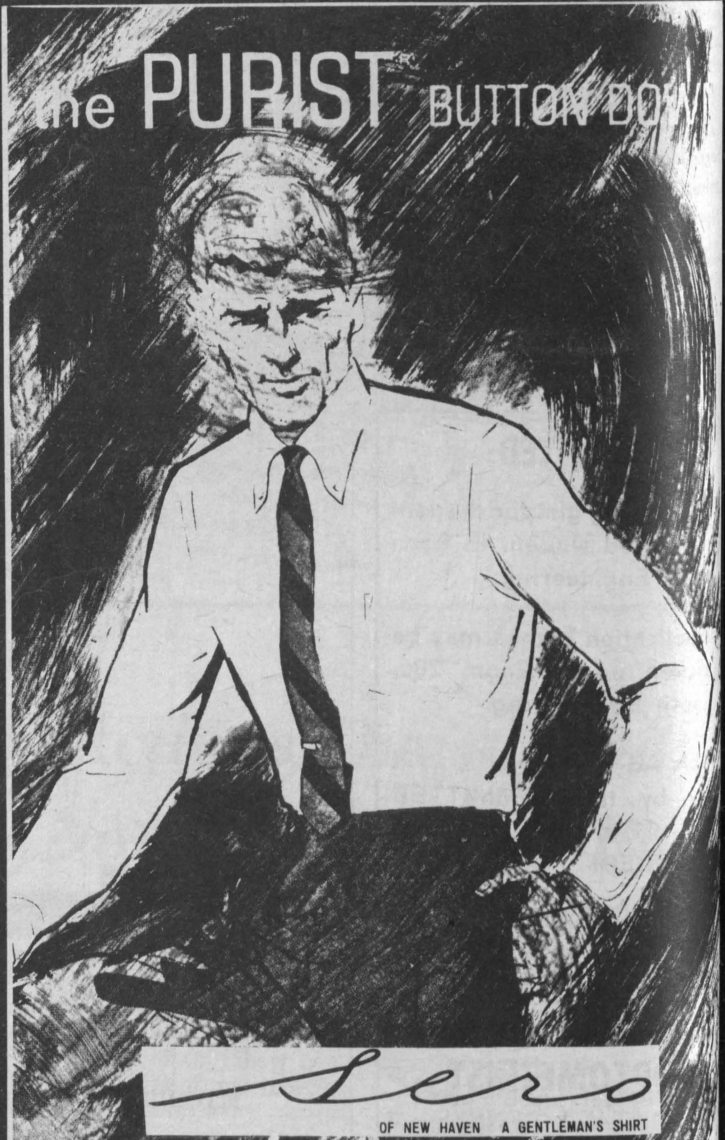
Chile

UNIVERSITY PURE OIL





CALL 232-5405
 SOUTH OF THE CAMPUS

The **PURIST** BUTTON DOWN



SERO
 OF NEW HAVEN A GENTLEMAN'S SHIRT

For the Finest in Quality
 Always Ask for SERO
 Exclusively At
FARGO TOGGERY'S
 Lower Level


WINTER QUARTER 1966-67

Pre-Registration Schedule

All Students in attendance Fall Quarter must register during the pre-registration period and pay fees in accordance with the payment schedule to avoid a \$15.00 late fee.

CRITICAL DATES & LOCATIONS

- Pre-programming with Advisers-November 10-November 16 in Adviser's Offices.
- Obtain your own I.B.M. Master Card at the Prairie Room of the Memorial Union, according to the following schedule:

Seniors & Graduate Students	Thursday Nov.17-8:30a.m.-10:00a.m.	(M-Z),	Thursday Nov.17-10:00a.m.-12Noon	(A-L)
Juniors	Thursday Nov.17-1:30p.m.-3:00p.m.	(M-Z),	Thursday Nov.17-3:00p.m.-4:30p.m.	(A-L)
Sophomores	Friday Nov.18-8:30a.m.-12Noon	(M-Z),	Friday Nov.18-1:30p.m.-4:30p.m.	(A-L)
Freshmen	Monday Nov.21-8:30a.m.-12Noon	(M-Z),	Monday Nov.21-1:30p.m.-4:30p.m.	(A-L)

The Student's classification as of beginning of Fall Quarter will govern Master Card distribution and class cards will not be issued to any student who does not present his Master Card, along with an approved Trial Card, at the appropriate locations.

- Obtain I.B.M. Class Cards by presenting an approved Trial Schedule plus I.B.M. Master Card at the following locations beginning at 8:30a.m., Thursday, November 17.

For all courses in Agriculture, Arts and Sciences, Engineering, and Pharmacy class cards will be distributed at the respective Departmental Offices.

For all courses in Chemistry and Physics, the class cards will be distributed at the Dean's Office.

For all courses in Home Economics, the class cards will be distributed at Room 29 of the Home Economics Building.

- After obtaining all Class Cards, students complete an official registration form, obtain advisor's signature, and present all registration materials to the Registrar's check-out tables in Crest Hall of the Memorial Union. The Registrar's Office will process registration from:

8:30a.m. to 12:00Noon and 1:00p.m. to 4:30p.m. on November 17, 18, 21, 22, 23.

Students must clear the Registrar's tables by 4:30p.m., November 23 to avoid a late fee charge. Students are urged to clear as early in the period as possible to take advantage of the lesser time then required because of shorter lines.

- Fees will be payable December 5,6,7 in Meinecke Lounge of the Memorial Union. Students will receive a fee payment schedule when they clear with the Registrar's Tables.
- Registration for new students as well as for returning students not in attendance Fall Quarter will take place in Departmental Offices on Friday afternoon, December 2 from 1:00-4:00p.m. The Registrar's Office will process these registrations during the same hours in Crest Hall of the Memorial Union.

Schedule of Classes

Department & Subject	Prerequisite	Cr.	Hour & Days	Instructor	Room
COLLEGE OF AGRICULTURE					
GENERAL AGRICULTURE					
303(Agric. Comm.)	Eng.103	3	11:30MW	Richardson	Min401
-Sec 1			2:30-5:20M		Min403
-Sec 2			2:30-5:20T		Min403
304(Agric. Comm.)	Gen.Ag.303	3	10:30Th,2:30-5:20Th	Logan	Ceres TV
305(Agric. Comm.)	Gen.Ag.303	3	11:30Th, 2:30-5:20W	Richardson	Ceres TV
AGRICULTURAL ECONOMICS					
103(Prin.Agric.Econ.)		3	9:30Th,1:30F	Hertsgaard	Mor308
203(Prin.Agric.Econ.)	Ag.Ec.103	5	12:30MW,8:30Th	Cobia	Mor308
320(Farm Mgmt. Prin.)	Ag.Ec.203	3	3:30MW,11:30F	Olson	Mor308
326(Prin.of Mktg.Farm Prod.)	Ag.Ec.203	3	4:30MTW	Cobia	Mor308
327(World Agric.)	Ag.Ec.203	3	9:30MW,1:30Th	Johnson	Mor212
360(Consumption Econ.)	Ag.Ec.203	3	8:30MW,12:30Th	Taylor	Mor308
409(Land Economics)	Ag.Ec.320	3	11:30MW,3:30Th	Johnson	Mor212
411(Marketing-Crops)	Ag.Ec.326	3	1:30MW,9:30F	D. Anderson	Mor308
414(Adv. Marketing)	Ag.Ec.326	3	3:30-5MW	Nelson	Mor212
418(Agric.Credit Inst.)	Ag.Ec.318	3	10:30MW,2:30Th	Taylor	Mor308
442(Agribus.Stds.inCrop Mktg.)	AgE411	3	1:30-5:20Th+hr.	arrgt.D.Anderson	Mor215
496(Special Topics)					
-Sec 4 (Macro-Econ.)	Dept.appr.	3	8:30Th,12:30F	Hertsgaard	Mor210
-Sec 5 (Nat.Res.Use)	Dept.appr.	3	10:30Th,2:30F	Anderson	Mor309
497(Research)	Dept.appr.	1-3	By arrgt.	Staff	Mor208
498(Seminar)	Jr./Sr.Stg.	1	4:30Th	Nelson	Mor308
510(Prob.inEcon.Theory)	Dept.appr.	3	9:30MW,1:30Th	D. Anderson	Mor210
532(Price Analysis)	Dept.appr.	3	2:30MW,10:30F	Cox	Mor212
596(Special Topics)					
-Sec 2 (Res.Meth.)	Dept.appr.	2	By arrgt.	Anderson	Mor204
-Sec 4 (Ad.Prod.Econ.)	Dept.appr.	2	7:30ThF	Anderson	Mor212
597(Research)	Dept.appr.	1-5	By arrgt.	Staff	Mor208
599(Thesis & Research)	Dept.appr.	1-5	By arrgt.	Staff	Mor208
AGRICULTURAL EDUCATION					
321(Meth. Voc'l. Agric.)	Dept.appr.	3	8:30-10:20MTW	Owen	Mor103
322(Superv.Farming&FFA Act.)	AgEd.320	3	8:30MW,12:30Th	DeAlton	Mor212
402(Meth. in Farm Mech.)	Dept.appr.	2	8:30-10:20ThF	Owen	Mor103
403(Directed Teaching)	Dept.appr.	9	By arrgt.	Owen	Mor103
404(Visual Aids in Tchg.Agric.)	appr.	2	1:30Th,1:30-3:20MW	Owen	Mor103
AGRICULTURAL ENGINEERING					
310(Farm Struct.&Utilities)	Math.122	5	9:30Th,1:30F 2:30-5:20Th	Butchbaker	AgE205 AgE208
312(Adv. Farm Mechanics)	AgE112,ME217	3	1:30Th, 9:30-11:20MW	Moilanen	AgE215 AgE210,215
320(Farm Electricity)	Math.122orApr.	3	8:30Th, 2:30-5:20F	Witz	AgE215 AgE210,215
334(Irrigation Meth.)	Soils20lorApr.	3	1:30MW,9:30F	Holmen	AgE205
496(Special Topics)	Dept.appr.	1-5	By arrgt.	Staff	AgE104
497(Research)	Dept.appr.	1-3	By arrgt.	Staff	AgE104
498(Seminar)	Sr.Stg.	1	1:30T	Promesberger	AgE201
599(Thesis & Research)	Dept.appr.	1-5	By arrgt.	Staff	AgE104
AGRONOMY					
103(Introduction)		3	7:30Th	Lund,Messersmith	Mor308
-Sec 1			2:30-4:20M		Wal247
-Sec 2			12:30-2:20T		Wal247
-Sec 3			12:30-2:20F		Wal247
202(Grain Crops)	Agron.103,Biol1101	3	8:30Th	Peterson	Mor212
-Sec 1			2:30-4:20T		Wal247
-Sec 2			12:30-2:20W		Wal247
306(Genetics)	Biol.101	3	9:30Th	Sandal	AgE223
-Sec 1			2:30-4:20W		Wal247
-Sec 2			12:30-2:20Th		Wal247
-Sec 3			9:30-11:20F		Wal247
307(Genetics Lab)	Agron.306	1	By arrgt.	Sandal	Wal237
490(Rpts. in Crop Prod.)	Dept.appr.	2-5	By arrgt.	Staff	Wal202
496(Special Topics)	Dept.appr.	1-5	By arrgt.	Staff	Wal202
497(Research)	Dept.appr.	1-3	By arrgt.	Staff	Wal202
498(Seminar)	Dept.appr.	1	1:30T	Carter	Wal221
524(Cyto.of Aneuploids)	Agron.523	3	By arrgt.	Maan	Wal226
531(Adv.Breed.Small Grns.)	Agron.407	3	9:30MW,1:30Th	Peterson	Wal221
540(Population Genetics)	Agron418,423	3	11:30MW,3:30Th	Bothun	Wal221
or appr.					
596(Special Topics)	Dept.appr.	1-3	By arrgt.	Staff	Wal202
597(Research)	Dept.appr.	1-5	By arrgt.	Staff	Wal202
598(Grad. Seminar)	Dept.appr.	1	3:30F	Carter	Wal221
599(Thesis & Research)	Dept.appr.	1-5	By arrgt.	Staff	Wal202
ANIMAL SCIENCE					
103(Introd. Dairy Husb.)		3	8:30Th,12:30F	Egerly	Da27
105(Introd. An. Husb.)		3	8:30MW	Staff	Shep9
-Sec 1			1:30-4:20M		Shep32
-Sec 2			8:30-11:20F		Shep32
-Sec 3			1:30-4:20F		Shep32
202(Breeds of Livestock)		3	11:30Th	Light	Shep9
-Sec 1			1:30-4:20T		Shep32
-Sec 2			1:30-4:20W		Shep32
-Sec 3			1:30-4:20Th		Shep32
214(Farm Meats)	AnS.105	3	9:30MW	V.Johnson	Shep9
-Sec 1			12:30-5:20T		Shep26
-Sec 2			12:30-5:20Th		Shep26
-Sec 3			8:30-1:20F		Shep26
230(Feeds & Feeding)		4	11:30MW,3:30Th	Haugse	Da27
-Sec 1			1:30-3:20M		Shep12
-Sec 2			10:30-12:20F		Shep12
309(Poultry Breeding)	Agrn306,Ans.201	3	7:30ThF	Staff	VanEs301
314(Dairy Cattle Feeding)	AnS230or330	3	8:30MW,12:30Th	Egerly	Da27

Department & Subject	Prerequisite	Cr.	Hour & Days	Instructor	Room
Animal Science-Continued					
315(Sheep Prod.)	AnS.230or330	3	10:30MW	Light	Shep9
-Sec 1			1:30-4:20T		Sheep Barn
-Sec 2			1:30-4:20W		Sheep Barn
317(Hog Prod.)	AnS.230or330	3	8:30Th	J.Johnson	Shep9
-Sec 1			1:30-4:20W		Hog Barn
-Sec 2			1:30-4:20Th		Hog Barn
330(Prin. An. Nutrition)	Chem.241	5	8:30MW,12:30Th	Erickson	Mor210
-Sec 1			1:30-3:20W		Shep12
-Sec 2			8:30-10:20F		Shep12
332(Nutr. of Monogastric An.)	AnS.330	3	10:30Th,2:30F	Dinussen	Shep9
410(Tech. Control)	Dept.appr.	3	By arrgt.	Jensen	Da29
423(Physiology of Reprod.)	Z211,Ch241	3	12:30MW,8:30F	Tilton	Shep9
427(Animal Breeding)	AgE306	3	11:30MW,3:30Th	Knutson	Shep9
496(Special Topics)	Dept.appr.	1-5	By arrgt.	Staff	Wal306
498(Seminar)	Dept.appr.	1	1:30F	Staff	Shep12
598(Grad. Seminar)	Dept.appr.	1	By arrgt.	Staff	Wal306
599(Thesis & Research)	Dept.appr.	1-5	By arrgt.	Staff	Wal306
BACTERIOLOGY					
202(Bact. for Nurses)		4	1:30MW,9:30F	Parsons	Mor210
-Sec 1			1:30-3:20Th	Parsons	Mor323
-Sec 2			3:30-5:20Th	Fulghum	Mor323
270(General Bact.)	Chem.241	4	7:30ThF	Parsons	AgE223
-Sec A			10:30-12:20M	Parsons	Mor323
-Sec B			10:30-12:20W	Parsons	Mor323
-Sec C			3:30-5:20W	Doubly	Mor323
-Sec D			10:30-12:20F	Doubly	Mor323
320(Public Health)	Bact.270	3	10:30Th,2:30F	Doubly	Mor308
407(Food Microbiology)	Bact.270	4	1:30MW, 9:30-12:20Th	Holm	Mor309
					Mor322
418(Physiology of Bact.)	Bact.417	3	By arrgt.	Sleeper	Mor314
431(Adv. Gen. Bact.)	Bact.270	3	9:30MW,1:30Th	Fulghum	Mor309
432(Bact. Tech.)	Bact.431conc.	2	2:30-5:20MF	Staff	Mor323
496(Special Topics)	Dept.appr.	1-3	By arrgt.	Staff	Mor319
497(Research)	Dept.appr.	1-3	By arrgt.	Staff	Mor319
498(Seminar)	Dept.appr.	1	By arrgt.	Sleeper	Mor314
596(Special Topics)	Dept.appr.	1-3	By arrgt.	Staff	Mor319
597(Research)	Dept.appr.	1-3	By arrgt.	Staff	Mor319
598(Grad. Seminar)	Dept.appr.	1	By arrgt.	Sleeper	Mor314
599(Thesis & Research)	Dept.appr.	1-5	By arrgt.	Staff	Mor319
CEREAL TECHNOLOGY					
441(Cereal Chemistry)	Chem.292or293	3	10:30MW,2:30Th	Staff	Harris 203
460(Ind.Food Processing)	Dept.appr.	5	9:30MW,1:30Th	Staff	Harris 203
597(Research)	Dept.appr.	1-5	By arrgt.	Staff	Harris 210
598(Grad. Seminar)	Grad.Stg.	1	4:30Th	McDonald	Harris 203
599(Thesis & Research)	Grad.Stg.	1-5	By arrgt.	Staff	Harris 210
ENTOMOLOGY					
305(Insects Aff. Crops)	Ent.201	3	10:30Th,2:30F	Callenbach	Mor212
312(Systematic Ent.)	Ent.201	4	7:30Th,1:30-4:20M, +3hrs.arrgt.	Post	Mor223
					Mor223
314(Insects Aff. Animals)	Ent.201	3	12:30MW,8:30-11:20M	Frye	Mor107
416(Adv.Immature Ins.)	Ent.415orSyst.	2	12:30T,1:30-4:20T	Dogger	Mor107
497(Research)	Dept.appr.	1-3	By arrgt.	Staff	Mor219
498(Seminar)	Dept.appr.	1	8:30F	Frye	Mor309
597(Research)	Dept.appr.	1-3	By arrgt.	Staff	Mor219
598(Grad. Seminar)	Dept.appr.	1	8:30F	Frye	Mor309
599(Thesis & Research)	Dept.appr.	3-9	By arrgt.	Staff	Mor219
HORTICULTURE					
206(General)	Bot.110orBiol.101	4	11:30MW,3:30Th	Lana	Mor215
-Sec A			1:30-3:20M	Scholz	Grn.Hse.
-Sec B			3:30-5:20M	Scholz	Grn.Hse.
-Sec C			3:30-5:20T	Scholz	Grn.Hse.
308(Potatoes)	Bot.110orBiol.101	3	12:30MW, 8:30-10:20F	Nelson	Wal315
					Grn.Hse.
320(Hort. Tech.)	Bot.110orBiol.101	3	10:30Th, 1:30-3:20F	Holland	Wal315
					Grn.Hse.
426(Plant Propagation)	B110orBio.101	4	8:30Th, 1:30-3:20Th	Holland	Wal315
					Grn.Hse.
450(Breeding Hort.Crops)	Agron.306	3	By arrgt.	Lana	Wal320
496(Special Topics)					
-Sec 1 (Prin.Ldscpg.)	Dept.appr.	3	8:30MW,12:30Th	Hoag	Mor309
-Sec 2 (Ldscpg.Sp.Purp.)	Appr.	3	1:30-4:20MW	Hoag	AgE208
497(Research)	Dept.appr.	1-3	By arrgt.	Staff	Wal320
498(Seminar)	Dept.appr.	1	By arrgt.	Staff	Wal320
599(Thesis & Research)	Grad.Stg.	1-5	By arrgt.	Staff	Wal320
PLANT PATHOLOGY					
449(Gen.Asp.Host.Par.Rel.)	Dept.appr.	2	By arrgt.	Flor	Wal318
496(Special Topics)	Dept.appr.	1-5	By arrgt.	Staff	Wal318
4					

Department & Subject Prerequisite Cr. Hour & Days Instructor Room

COLLEGE OF ARTS AND SCIENCES

EDUCATION

215 (Educ. Psychology)	Psych.201	3	9:30MW,1:30Th	Bissonnette	Min219
301 (Found. of Educ.)	Educ.450	3	9:30MW,1:30Th	Aarnes	Min322
303 (Hum. Growth&Dev. Adoles.)	Educ.215	3	11:30Th	Flynn	Min319
-Sec A			1:30W+1hr. arrgt.		SE106
-Sec B			2:30W+1hr. arrgt.		Min205
-Sec C			2:30Th+1hr. arrgt.		Min300
-Sec D			3:30Th+1hr. arrgt.		Min314
-Sec E			3:30W+1hr. arrgt.		Min300
318 (Sec.Sch.Methods) (With Educ.450)		3			
-Sec 1 (1st&last week of Qtr.)			8:30-12MTWThF, Anderson		Min331
-Sec 2 (Jr. in Ag.orHEC.)			1:30-4MTWThF		Min331
321 (Introd. Tests&Meas.)	Educ.215	3	3:30-4:45MW	Teigland	Min314
325 (Meth. of Tchg. Instr. Music)	Mus.206	3	9:30MW,1:30Th	Euren	Mus. Annex 4
370 (Spec. Meth. Tchg. English)	Jr. Stg.	3	11:30Th+1hr. arrgt.	Webster	Min205
371 (Spec. Meth. in Tchg. Math.)	Jr. Stg.	3	11:30MW, 3:30Th	Friese	Min205
374 (Meth. in Tchg. Men's PhyEd.)		2	By arrgt.	Nystrom	PEd.
375 (Spec. Meth. Vocal Music)	Mus113,206	2	8:30Th	Godwin	Putn6
378 (Spec. Meth. Tchg. Speech)		3			
-Sec 1 (Gen. Sp. & Drama)			1:30MW, 9:30F	West	Adm207
-Sec 2 (Therapy)			1:30MW, 9:30F	Sigman	Clinic
423 (Ind. Appraisal)		3	5:30-8:00(p.m.)	W Teigland	Min331
443 (Occ. Info. in Guid. Prog.)		3	5:30-8:00(p.m.)	T Teigland	Min331
450 (Student Teaching)	Dept. appr.	9-12			
-Sec 1			By arrgt.	Staff	Min327
-Sec 2			By arrgt.	Kaiser	PEd
-Sec 3			By arrgt.	Gregoire	PEd
460 (Curriculum Building)		3	5:30-8:00(p.m.)	Th Aarnes	Min314
472 (School Finance)	24crds. Ed.	3	5:30-8:00(p.m.)	W Flynn	Min322
496 (Special Topics)					
-Sec 1 (Sch. Plt. Plan. & Maint.)		3	5:30-8:00(p.m.)	M Anderson	Min322
-Sec 2 (A-V Instr.)	With 450	1	By arrgt.	Biggs	Min331
-Sec 3		1-3	By arrgt.	Staff	Min327
515 (Superv. of Instruction)		3	5:30-8:00(p.m.)	T Eland	Min322
535 (Elem. School Curriculum)	30Cr. Ed.	3	9:00-11:30Sat. a.m.	Eland	Min322
542 (Prin. & Tech. of Group Work)	Dpt Appr.	3	9:00-11:30Sat. a.m.	Teigland	Min314
545 (Counseling Practicum)	Dept. appr.	1-5	By arrgt.	Staff	Min331
596 (Special Topics)	Dept. appr.	1-3	By arrgt.	Staff	Min327
597 (Research)	Dept. appr.	1-3	By arrgt.	Staff	Min327
599 (Thesis & Research)	Dept. appr.	8-15	By arrgt.	Staff	Min327

ENGLISH

101 (Freshman English)		3			
-Sec 1			9:30MW,1:30Th	Schlipf	SE106
-Sec 2			9:30Th,1:30F	Schoff	Min310
-Sec 3			10:30MW,2:30Th	Schlipf	SE106
-Sec 4			10:30Th,2:30F	Schlipf	SE106
-Sec 5			1:30MW,9:30F	Schoff	Min310
-Sec 6 (For Foreign Students)			4:30-5:45MW	Oldknow	Min310
102 (Freshman English)	Eng.101	3			
-Sec 1			7:30MW	Orvik	Lib101
-Sec 2			7:30MW	Jury	Min310
-Sec 3			7:30ThF	Forsythe	Min401
-Sec 4			7:30ThF	Zimmerman	SE31
-Sec 5			8:30MW,12:30Th	Jury	Min310
-Sec 6			8:30MW,12:30Th	Orvik	Lib101
-Sec 7			8:30MW,12:30Th	E. McGrath	Min418
-Sec 8			8:30MW,12:30Th	Peet	Lib105
-Sec 9			8:30Th,12:30F	Zimmerman	SE31
-Sec 10			8:30Th,12:30F	Forsythe	Min208
-Sec 11			8:30Th,12:30F	Cabral	SE33
-Sec 12			8:30Th,12:30F	T. McGrath	Lib105
-Sec 13			9:30MW,1:30Th	Johnson	Min418
-Sec 14			9:30MW,1:30Th	Voldal	Lib105
-Sec 15			9:30MW,1:30Th	Peet	Lib101
-Sec 16			9:30MW,1:30Th	Sackett	Min310
-Sec 17			9:30MW,1:30Th	Holmquist	Min305
-Sec 18			9:30Th,1:30F	T. McGrath	Lib105
-Sec 19			9:30Th,1:30F	Cabral	SE33
-Sec 20			9:30Th,1:30F	Sackett	Min305
-Sec 21			9:30Th,1:30F	Lyons	Min418
-Sec 22			9:30Th,1:30F	Schlipf	SE106
-Sec 23			10:30MW,2:30Th	Voldal	Lib105
-Sec 24			10:30MW,2:30Th	Redman	SE35
-Sec 25			10:30MW,2:30Th	Cabral	SE33
-Sec 26			10:30MW,2:30Th	Peet	Lib101
-Sec 27			10:30MW,2:30Th	Beeching	SE34
-Sec 28			10:30MW,2:30Th	Wallum	Min208
-Sec 29			10:30MW,2:30Th	E. McGrath	SE104
-Sec 30			10:30Th,2:30F	Redman	SE31
-Sec 31			10:30Th,2:30F	Wallum	Min310
-Sec 32			10:30Th,2:30F	Beeching	Lib105
-Sec 33			11:30MW,3:30Th	Peet	Lib101
-Sec 34			11:30MW,3:30Th	Perkins	Lib105
-Sec 35			12:30MW,8:30F	Perkins	Lib105
-Sec 36			12:30MW,8:30F	Johnson	SE104
-Sec 37			1:30MW,9:30F	Farnham	Lib105
-Sec 38			1:30MW,9:30F	Pavicic	SE33
-Sec 39			1:30MW,9:30F	Hoverman	SE35
-Sec 40			1:30MW,9:30F	Olson	SE31
-Sec 41			1:30MW,9:30F	Engel	Min208
-Sec 42			2:30MW,10:30F	Farnham	Lib105
-Sec 43			2:30MW,10:30F	Pavicic	SE32
-Sec 44			2:30MW,10:30F	Lyons	Min401
-Sec 45			2:30MW,10:30F	Hoverman	SE34
-Sec 46			2:30MW,10:30F	Pepper	Lib101
-Sec 47			3:30MW,11:30F	Pepper	Lib105
-Sec 48			3:30MW,11:30F	Olson	SE31
-Sec 49			3:30MW,11:30F	Hendrickson	SE34
-Sec 50			4:30-5:45MW	Hendrickson	SE34

210 (Survey of English Lit.)		3	10:30Th,2:30F	Sackett	Min319
227 (Survey of American Lit.)		3	2:30MW,10:30F	Hove	Min219
256 (World Literature)		3	11:30MW,3:30Th	McGrath	SE32
300 (Humanities-Renaissance)		3	7:30-10:00(p.m.)	Th Holmquist	Min301
320 (19th Cent. Amer. Novel.)		3	7:30-10:00(p.m.)	W Engel	Min219
324 (Modern Des. Grammar)		3	5:00-7:30(p.m.)	T Hove	Min301
327 (Practice in Criticism)		3	3:30MW,11:30F	Engel	Min302
338 (Shakespeare 1600-1616)		3	7:30-10:00(p.m.)	T Schoff	Min305
351 (Adv. English Composition)		3			
-Sec 1			9:30MW,1:30Th		Min314
-Sec 2			9:30Th,1:30F		Min302
355 (The Technical Report)		3	2:30MW,10:30F	Cabral	SE31
356 (Introd. to Doc. Film Writing)	Appr	3	11:30Th,3:30F	Beeching	Min300
370 (Spec. Meth. Tchg. English)		3	11:30Th+1hr. arrgt.	Webster	Min205
376 (Poetry&Prose of the Romantic Period)		3	1:30MW,9:30F	Lyons	Min418
400 (Modern British Poetry)		3	10:30MW,2:30Th	Sackett	Min310
406 (Chaucer)		3	10:30Th,2:30F	Oldknow	Min208
426 (Studies in Amer. Real.&Nat.)		3	9:30MW,1:30Th	Cater	Min301
435 (Studies in Regional Lit.)		3	10:30MW,2:30Th	Cater	Min314
438 (18th Cent. English Lit.)		3	2:30MW,10:30F	Schoff	Min304
475 (Non-dramatic Lit. 16th Cent.)		3	8:30Th,12:30F	Beeching	Min310
496 (Special Topics)					
-Sec 1 (Phil. of Language)		3	7:30-10:00(p.m.)	W Brkic	Min310
-Sec 2 (Persp. on the Nat. of Man)		3	7:30-10:00(p.m.)	Th Cater	Min309
-Sec 3 (Poetry Writing)		3	1:30-4:00	Lyons	Min300
-Sec 4 (Introd. to Linguistics)		3	7:30-10:00(p.m.)	M Oldknow	Min310
-Sec 5 (Hist. of Language)		3	9:30Th,1:30F	Oldknow	Min300
596 (Spec. Topics-World Lit.)	Grad. Stg.	3	11:30MW,3:30Th+arrgt.	McGrath	Min300

LIBRARY SCIENCE

121 (Library Usage)		1		Staff	Lib101
-Sec 1			9:30T		
-Sec 2			10:30T		
-Sec 3			11:30T		
-Sec 4			1:30T		
-Sec 5			9:30Th		
-Sec 6			10:30Th		
-Sec 7			11:30Th		
-Sec 8			9:30F		
-Sec 9			2:30T		
-Sec 10			11:30F		
305 (Library Administration)		3	By arrgt.	Stallings	Lib236
306 (Book Selection)		3	By arrgt.	Stallings	Lib236
307 (Reference)		3	By arrgt.	Stallings	Lib236
310 (Practice Work-Res. Tools)	LS121	3	By arrgt.	Stallings	Lib236

Department & Subject Prerequisite Cr. Hour & Days Instructor Room

MATHEMATICS

80 (Refresher Math.)	H.S.Math	0			
109 (College Algebra)	H.S.Alg.	5	7:30MTWThF	Staff	Min322
-Sec 1			9:30Th,1:30MW		SE104
-Sec 2			11:30MW,3:30Th		SE33
111 (Plane Trig.)	H.S.Alg.	4			
-Sec 1			7:30MTWTh		SE33
-Sec 2			7:30MTWTh		Da27
-Sec 3			8:30MW,12:30Th		SE33
-Sec 4			8:30MW,12:30Th		SE104
-Sec 5			9:30Th,1:30MW		SE34
-Sec 6			9:30Th,1:30MW		Min202
-Sec 7			10:30Th,2:30MW		SE33
-Sec 8			11:30MW,3:30Th		SE104
116 (Slide Rule)	Logarithms	1			
-Sec 1			7:30M		Min305
-Sec 2			8:30F		Min305
-Sec 3			10:30Th		Min305
-Sec 4			11:30F		Min301
120A (College Algebra)	H.S.Alg.	3	7:30MTWThF	Staff	Min301
120 (College Algebra)	H.S.Alg.	3			
-Sec 1			7:30ThF		SE104
-Sec 2			2:30MW,10:30F		SE104
-Sec 3			2:30MW,10:30F		SE106
121 (College Algebra)	Math120Aor120	3			
-Sec 1 (Pharm.)			10:30Th,2:30F	Staff	Sud37
-Sec 2			2:30MW,10:30F		Sud224
-Sec 3			2:30MW,10:30F		Min305
-Sec 4			10:30Th,2:30F		SE34
-Sec 5 (Pharm.)			7:30ThF		Sud224
-Sec 6			7:30ThF		Min205
-Sec 7			7:30ThF		Sud37
-Sec 8			7:30ThF		Min202
-Sec 9			9:30MW,1:30Th		Min202
-Sec 10			9:30MW,1:30Th		SE104
-Sec 11			11:30MW,3:30Th		Min305
-Sec 12			7:30-10:00(p.m.)	T	Min208
122 (Plane Trig.)	Math.121	3	7:30ThF	Staff	Min305
125 (Coll. Alg.&Pl.Trig.)	H.S.Alg.	5	7:30MTWThF	Staff	Min309
126 (Analytic Geometry) Coll. Alg.&Trig.		4			
-Sec 1			10:30MW,2:30Th		AgE205
-Sec 2			9:30MW,1:30Th		SE33
150 (Intr. Anal. Geom. & Calc.)	Math125or	5		Staff	
-Sec 1	Equiv.		7:30MTWThF		Min304
-Sec 2			8:30Th,12:30MW		Min302
-Sec 3			8:30MW,12:30Th		AgE201
-Sec 4			10:30MW,2:30Th		Mor210
201 (Diff.&Int. Calculus) Analytic Geom.		5		Staff	
-Sec 1			8:30MW,12:30Th		Min302
-Sec 2			9:30MW,1:30Th		Min302
-Sec 3			8:30MW,12:30Th		Min309
202 (Diff.&Int. Calculus)	Math201.	5		Staff	
-Sec 1			8:30MW,12:30Th		Min208
-Sec 2			9:30MW,1:30Th		

Courses Listed By Colleges and By Departments Within

Department & Subject Prerequisite Cr. Hour & Days Instructor Room

Spanish-Continued
205 (Intermediate) Span.204 4
-Sec 1 9:30Th,1:30M SE36
-Sec 2 9:30Mw,1:30Th SE31
314 (Selected Spanish Readings)Sp.206 3 7:30(p.m.)MWF Urdaneta Min208

MUSIC

111 (Intr. to Music Lit.) 3 12:30Mw,8:30F VanVlissingenFest.Hl.
112 (Symphonic Lit.) Mus.111 3 12:30Mw,8:30F Johnson Putn12
121,122,123 (Elem. Piano) 2 By arrgt. Croal,Koenig Putn17,16
131,132,133 (Elem. Voice) 2 By arrgt. Godwin,M.Ledet Putn10,4
141,142,143 (Elem.Strings&Winds) 2 By arrgt. Euren,JohnsonAnnex4,Putn3
205 (Theory I) Mus.204orApr. 3 1:30Mw,9:30Th Koenig Putn12
221,222,223 (Intermed. Piano) 2 By arrgt. Croal,Koenig Putn17,16
231,232,233 (Intermed. Voice) 2 By arrgt. Godwin,M.Ledet Putn10,4
241,242,243 (Int.Strings&Winds) 2 By arrgt. Euren,Johnson Annex4,Putn3
305 (History of Music) Mus.206 2 1:30Mw Johnson Putn6
308 (Theory II) Mus.307 4 10:30Mw,2:30Th Johnson Putn12
313 (Orchestration) Mus.312 3 2:30Mw,10:30F Johnson Putn12
321,322,323 (Adv. Piano) 2 By arrgt. Croal,Koenig Putn17,16
325 (Meth.ofTchg.Inst.Music) Mus.206 3 9:30Mw,1:30Th Euren Mus.Annex4
331,332,333 (Adv. Voice) 2 By arrgt. Godwin,M.Ledet Putn10,4
341,342,343 (Adv.Strings&Winds) 2 By arrgt. Euren,Johnson Annex4,Putn3
375 (Spec.Meth.Vocal Music)Mus113,206 2 8:30Th Godwin Putn6
151,251,351,451 (Choir) 1 4:30MwTh Godwin Putn6
151,251,351,451 (Oratorio) 1 7:30-9:30(p.m.) W Godwin Putn6
151,251,351,451 (Women's Glee Club) 1 12:30Th M.Ledet Putn6
151,251,351,451 (Men's Glee Club) 1 11:30Mw Godwin Putn6
161,261,361,461 (Band) 1 4:30MwTh,12:30F Euren Mus.Annex4
161,261,361,461 (Orchestra) 1 3:30Mw+1hr.arrgt. D.Ledet Putn6

NATURAL SCIENCES

BIOLOGY

101 (General Biology) 4
-Sec A 11:30Mw,3:30Th Staff Min319
-Sec B 8:30Th,12:30F Min319
-Sec 1 7:30-9:20Th Min102
-Sec 2 9:30-11:20Th Min102
-Sec 3 11:30-1:20Th Min102
-Sec 4 1:30-3:20Th Min102
-Sec 5 3:30-5:20Th Min102
-Sec 6 7:30-9:20F Min102
-Sec 7 9:30-11:20F Min102
-Sec 8 11:30-1:20F Min102
-Sec 9 1:30-3:20F Min102
102 (General Biology) Biol.101 4
-Sec A 9:30Mw,1:30Th Staff Min319
-Sec B 9:30Th,1:30F Min319
-Sec 1 8:30-10:20M Min102
-Sec 2 10:30-12:20M Min102
-Sec 3 12:30-2:20M Min102
-Sec 4 2:30-4:20M Min102
-Sec 5 8:30-10:20M Min102
-Sec 6 10:30-12:20M Min102
-Sec 7 12:30-2:20M Min102
-Sec 8 2:30-4:20M Min102
-Sec 9 8:30-10:20M Min102
-Sec 10 10:30-12:20M Min102

BOTANY

310 (Anatomy of Seed Plts.)Dept.appr. 3 12:30Mw,8:30-11:20F Hayat Min101
319 (Aquatic Plants) Dept.appr. 3 By arrgt. Harms MinAnn4
402 (Exp. Ecology) Bot.304 or apr. 4 10:30Mw,12:30-4:20Th Burgess MinAnn4
403 (Crop Ecology) Bot.402 or apr. 4 By arrgt. Rogers MinAnn4
405 (Range Plants) Bot.214 or apr. 4 By arrgt. Goetz MinAnn4
496 (Special Topics) Dept.appr. 1-5 By arrgt. Staff Min117
497 (Research) Dept.appr. 1-3 By arrgt. Staff Min117
498 (Seminar-New Syst.) Dept.appr. 1 By arrgt. Harms Min101
537 (Photosynthesis) Dept.appr. 3 By arrgt. Duysen Min101
596 (Special Topics) Dept.appr. 1-5 By arrgt. Staff Min117
597 (Research) Dept.appr. 1-5 By arrgt. Staff Min117
598 (Seminar-New Syst.) Grad.Stg. 1 By arrgt. Harms Min101
599 (Thesis & Research) Grad.Stg. 1-5 By arrgt. Staff Min117

GEOGRAPHY

101 (Introductory) 3 1:30Mw,9:30F Kress Min319
252 (Geog. of Settlement) 3 10:30Mw,2:30Th Kress Min219
311 (Geog.ofWest.N.Amer.)JrS,PrevGeog 3 9:30Th,1:30F Kress SE35
497 (Research) Dept.appr. 1-3 By arrgt. Kress Min103A

GEOLOGY

105 (Historical Geology) Phys.Geol. 5 1:30Mw,9:30F Brophy Min219
-Sec A 2:30-5:20M Staff Min101
-Sec B 1:30-4:20F Staff Min101,104
304 (Mineralogy I)Geol.104,105orApr. 4 8:30Mw,1:30-3:20Mw Metzger Min101
312 (Geomorphology) Phys.Geol. 3 10:30Mw,2:30-4:20Th Brophy Min101
496 (Spec.Topics-Clay Mineralogy)appr 3 By arrgt. Metzger Min104B

ZOOLOGY

108 (Human Physiology) Zool.107or111 4 2:30Mw,10:30F Jacobsen Min319
-Sec 1 8:30-10:20M Min121
-Sec 2 10:30-12:20M Min121
-Sec 3 1:30-3:20M Min121
-Sec 4 3:30-5:20M Min121
-Sec 5 8:30-10:20M Min121
-Sec 6 10:30-12:20M Min121
-Sec 7 1:30-3:20Th Min121
-Sec 8 3:30-5:20Th Min121
304 (Comp.Vert.Anatomy)Zoo.113 orApr 5 10:30Mw,2:30Th Sokol Min125
316 (Invertebrate Zool.)Zool.102or112 4 2:30-5:20M,3:30-6:20Th Min104
9:30Mw,1:30Th Comita Min125
1:30-4:20Mw Min104
322 (Prin.of Ecology)Zool.111,Ent.201 3 7:30Th, Cassel Min101
orBot.111 8:30Th+1hr.arrgt. Min115
362 (Mammalian Physiology)Chem.241 or 4 7:30MwF, Jacobsen Min125
Equiv. 9:30-1:20Th Min123
411 (Cytology) Chem.241 4 12:30Mw,8:30F Hayes Min125
7:30-10:20M,8:30-9:20Th Min123
496 (Special Topics)
-Sec 1 (Parasitology) Biol.102 4 8:30Mw,12:30Th Andrews VanEs301
or Zool.112. 8:30-11:20F or 2:30-5:20Th VanEs304
-Sec 2 (W.Life Pop.) Apr. 3 By arrgt. Gross Min125
-Sec 3 (Fisheries Biol.)Dpt.appr. 3 By arrgt. Peterka Min125
-Sec 4 Dept.appr. 1-5 By arrgt. Staff Min117
497 (Research) Dept.appr. 1-3 By arrgt. Staff Min117
498 (Seminar)Req.Upp.Cl.Maj.-noCr.,Jr. 1 11:30F Hayes Min101
499 (Research) Dept.appr. 1-5 By arrgt. Staff Min117
598 (Seminar)Req.of Zool.Grad.Studts. 1 11:30F Hayes Min101
599 (Thesis & Research) 8-15 By arrgt. Staff Min117

PHILOSOPHY

301 (Intro. to Phil.Analysis) 3 10:30Mw,2:30Th Brkic Fest.Hall
302 (Intro. to Philosophy) Phil.301 3 2:30Mw,10:30F Hertel Min418
311 (Hist.ofMed.&Ren.Phil.)Ph301orApr 3 9:30Mw,1:30Th Roach Rel.Ed.Aud.
402 (Phil. of Religion) 3 7:30-10:00(p.m.) Th Brkic Min310
496 (Special Topics) Dept.appr. 3
-Sec 1 (Phil. of Language) Appr. 7:30-10:00(p.m.)W Brkic Min310
-Sec 2 (Persp.on the Nat.ofMan) 7:30-10:00(p.m.)Th Cater Min309

PHYSICAL EDUCATION-MEN

102 (Winter Activities) 1
-Sec 1 7:30Mw Staff PED.Floor
-Sec 2 8:30Mw
-Sec 3 9:30Mw
-Sec 4 2:30Mw
-Sec 5 7:30Th
-Sec 6 8:30Th
-Sec 7 2:30Th
110 (First Aid) 1
-Sec 1 8:30Th Isrow PED.112
-Sec 2 9:30Th PED.112
-Sec 3 10:30Th PED.112
119 (Bowling) 1
-Sec 1 9:30Mw Stu.Union
-Sec 2 10:30Mw Stu.Union
205 (Apparatus) 1 10:30Mw PED.Stage
207 (Wrestling) 1 3:30MwThF Maughan PED.Pool

Department & Subject Prerequisite Cr. Hour & Days Instructor Room

Physical Education-Men-Continued
209 (Basketball) Soph.Stg. 1 3:30MwThF Cowman PED.Floor
212 (Badminton&Archery) 1 8:30Mw,12:30Th Kaiser PED.Floor,Pool
220 (American Country Dance) 1 11:30Mw Gregoire PED.Floor
229 (Intro. to Phy.Educ.) 3 12:30Mw,8:30F Kjelbertson PED.204
302 (Meth.&Tech.of Off.Wtr.Sports) 1 By arrgt. Koppenhaver PED.
305 (Adv. Swimming) PED.105 2 6:15(p.m.) T Manley Fargo H.S.
309 (Kinesiology) PED.308 3 9:30Mw,1:30Th Cowman PED.204
314 (Tchg.of Ind.&Dual Spts.)Dpt.appr 2 8:30F,12:30-2:20T Raer PED.112,Flr
321 (Meth.in Coach.Football) 2 10:30Mw Erhardt PED.112
324 (Meth.in Coach.Wrestling) 2 11:30Th Maughan PED.204
330 (Meth.&Matls.for Hlth.Tchg.) 2 10:30Th Belk PED.204
350 (Elem. School Phy.Ed.) PED.229 3 9:30F,12:30-2:20Mw GregoirePE112,Flr
374 (Meth.inTchg.Men'sPhyEd.) 2 By arrgt. Nystrom PED.
402 (Org.&Admin.of PhyEd.) PED.229 3 8:30Th,12:30F Staff PED.204
407 (Supervision) Sr.Stg. 2 By arrgt. Kaiser PED.
409 (Adapted Act. Program) PED.406 2 11:30Mw Erhardt PED.204
410 (Teaching Traffic Safety) 3 7:30MwF Kaiser PED.204
424 (Tests&Meas.in Phy.Educ.) Sr.Stg. 3 9:30Th,1:30F Kaiser PED.204
497 (Research in Phy.Educ.) 1-3 By arrgt. Koppenhaver PED.
504 (Rec.Lit.&Res.in Phy.Educ.) 3 By arrgt. Belk PED.

PHYSICAL EDUCATION-WOMEN

103 (Fund. of Body Mechanics) 1
-Sec 1 8:30Mw Nass PED.Stage
-Sec 2 9:30Mw Nass PED.Stage
-Sec 3 10:30Mw Hegstad PED.Stage
-Sec 4 11:30Mw Hegstad PED.Pool
-Sec 5 12:30Mw Raer PED.Stage
-Sec 6 1:30Mw Hegstad PED.Stage
-Sec 7 2:30Mw Hegstad PED.Pool
-Sec 8 8:30Th Gregoire PED.Stage
-Sec 9 9:30Th Gregoire PED.Stage
-Sec 10 10:30Th Nass PED.Pool
-Sec 11 11:30Th Nass PED.Stage
-Sec 12 12:30Th Hegstad PED.Stage
-Sec 13 1:30Th Hegstad PED.Stage
-Sec 14 2:30Th Nass PED.Stage
110 (First Aid) 1
-Sec 1 8:30Th PED.112
-Sec 2 9:30Th PED.112
-Sec 3 10:30Th PED.112
119 (Gymnastics) PED.120 1 10:30Th Hegstad PED.Stage
124 (Basketball) PED.124 1 11:30Th Folstad PED.Floor
202 (Bowling) Soph.Stg. 1
-Sec 1 8:30Mw Stu.Union
-Sec 2 9:30Mw Stu.Union
205 (Badminton) Soph.Stg. 1
-Sec 1 9:30Th Raer PED.Floor
-Sec 2 10:30Th PED.Floor
211 (Recreational Games) Soph.Stg. 1 10:30Mw Raer PED.Floor
220 (American Country Dance) Soph.Stg. 1 11:30Mw Gregoire PED.Floor
225 (Beg.Modern Dance) Soph.Stg. 1 2:30Mw Nass PED.Stage
229 (Intro. to Phy.Educ.) 3 12:30Mw,8:30F Kjelbertson PED.204
231 (Fund.of Wtr.Sport Act.)Soph.Stg. 1
-Sec 1 (Curling) 3:30-5:20T FM Curling Club
-Sec 2 (Curling) 3:30-5:20Th FM Curling Club
309 (Kinesiology) PED.308 3 9:30Mw,1:30Th Cowman PED.204
312 (Meth.&Tech.of Off.Basketball)P124 1 9:30M,1:30Th Folstad PED.112,Flr
314 (Tchg.of Ind.&Dual Spts.)Dpt.appr. 2 8:30F,12:30-2:20T Raer PED.112,Flr
317 (Tchg.of Body Mechanics)P103JrStg 1 12:30Mw Nass PED.112,Pool
330 (Meth.&Matls.forHlth.Tchg.)PED116 2 10:30Th Belk PED.204
350 (Elem. School Phy.Ed.) PED.229 3 9:30F,12:30-2:20MwGregoirePE112,Flr
402 (Org.&Admin.of PhyEd.) PED.379 3 8:30Th,12:30F Staff PED.204
409 (Adapted Act. Program) PED.309 2 11:30Mw Erhardt PED.204
424 (Tests&Meas.in Phy.Educ.) Sr.Stg. 3 9:30Th,1:30F Kaiser PED.204

RELIGION

252 (Prophetic Literature) 3 8:30Th,12:30F Roach Rel.Ed.Aud.
261 (Early Church History) 2 9:30Th Vere Rel.Ed.Aud.
274 (Catholic Doctrine II) 2 1:30Mw Matchie Rel.Ed.Aud.
275 (Catholic Doctrine III) 2 10:30Th Sherman Rel.Ed.Aud.
278 (Contemp.Protestant Theology) 2 2:30-4:20T Kvinge Rel.Ed.Aud.
303 (Comparative Religion) 3 2:30Mw,10:30F Roach Rel.Ed.Aud.
311 (Hist.ofMed.&Ren.Phil.) 3 9:30Mw,1:30Th Roach Rel.Ed.Aud.
402 (Philosophy of Religion) 3 7:30-10:00(p.m.) Th Brkic Min310

R.O.T.C.-ARMY

-All MS Students (1Hr.Lab Req.of each MS Student)7:30,9:30,12:30or1:30F FH.
102 (Basic Military) PED.101 1
-Sec 1 8:30M Yauch Long.1
-Sec 2 10:30M
-Sec 3 12:30T
-Sec 4 2:30T
-Sec 5 9:30M
-Sec 6 11:30M
-Sec 7 12:30M
-Sec 8 10:30T
202 (Basic Military) MS201 2
-Sec 1 8:30Mw Rumpel Long.2
-Sec 2 10:30Mw
-Sec 3 12:30Th
-Sec 4 2:30Th
-Sec 5 8:30Th
302 (Advanced Military) MS301 3
-Sec 1 7:15ThF Daugherty Long.2
-Sec 2 3:30Mw,11:30F
402 (Advanced Military) MS401 3
-Sec 1 7:15ThF Perry Long.1
-Sec 2 3:30Mw,11:30F

R.O.T.C.-AEROSPACE STUDIES

-All AS Students (1Hr.Lab Req.of each AS Student)8:30,10:30or11:30F FH
102 (Basic Military) PE101 1
-Sec 1 7:30M Cover FH203
-Sec 2 10:30M
-Sec 3 12:30T
-Sec 4 2:30T
-Sec 5 9:30M
-Sec 6 11:30M
-Sec 7 8:30Th
-Sec 8 9:30Th
202 (Basic Military) AS201 2
-Sec 1 8:30Mw Hanson FH1
-Sec 2 10:30Mw
-Sec 3 12:30Th
-Sec 4 2:30Th
302 (Adv. Aerospace Studies) AS301 3
-Sec 1 7:30ThF Pixley FH203
-Sec 2 3:30Mw,11:30F
402 (Adv. Aerospace Studies) AS401 3
-Sec 1 7:30ThF Ensberg FH1
-Sec 2 3:30Mw,11:30F

SEMINARY-CARDINAL MUENCH

132 (Rel-Creation) 2 8:00-8:50Th Sem.Staff Sem.
152 (Gregorian Chant) 2 8:00-8:50Th Sem.Staff Sem.
182 (Latin) CM181 3 11:00-11:50MwF Sem.Staff Sem.

SOCIAL AND BEHAVIORAL SCIENCES

COMMUNICATIONS
201 (Journalism) Eng.103 3 10:30Th,2:30F L.Richardson Min314
375 (Comm. Practicum) Comm.201,appr. 1-3 9:30F+hrs.arrgt. G.RichardsonC.Ceres

ECONOMICS

242 (Accounting) Econ.241 3
-Sec 1 8:05-9:20Mw Thiel AgE223
-Sec 2 9:30Mw,1:30Th Thiel AgE223
-Sec 3 8:30Th,12:30F Anderson SE32
-Sec 4 9:30Th,1:30F Anderson SE32
250 (Prin. of Economics) Soph.Stg. 3
-Sec 1 8:30Th,12:30F Min219
-Sec 2 10:30Th,2:30F Min309
251 (Prin. of Economics) Econ.250 3
-Sec 1 9:30Mw,1:30Th Cooper SE32
-Sec 2 11:30Mw,3:30Th Min219
312 (Personnel Admin.) 3
-Sec 1 9:30Th,1:30F Myrold Min219
-Sec 2 3:30Mw,11:30F Min309
313 (Money & Banking) Econ.250 3 10:30Mw,2:30Th Pettee Min301
315 (Business Finance) Econ.250 3
-Sec 1 9:30Th,1:30F Min301
-Sec 2 10:30Th,2:30F Min301

Courses Listed By Colleges and By Departments Within

Department & Subject	Prerequisite	Cr.	Hour & Days	Instructor	Room
Economics-Continued					
322(Business Law)	Econ.250	3	12:30MW,8:30F	Yuill	Min219
-Sec 1			1:30MW,9:30F		Min305
-Sec 2			8:30Th,12:30F	Rilling	Min309
323(Business Law)		3			
329(Life Insurance)	Econ.250	3	8:05-9:20MW	Myrold	SE32
-Sec 1			10:30Th,2:30F		Min219
-Sec 2			2:30MW,10:30F	Pettee	Min301
331(Foreign Trade)	Econ.252	3	7:30-10:00(p.m.)	W Anderson	Min309
352(Adv.Accounting Prin.)	Econ.351	3	3:30MW,11:30F	Cooper	Min418
418(Adv. Economics)	Econ.252	3	8:30MW,12:30Th	Lodise	Min301
432(Econ.Dev.&Growth)	Econ.252	3	11:30MW,3:30Th	Lodise	Min309
454(Dev.of Econ.Thought)	Econ.252	3			
HISTORY					
102(U.S. History)		3			
-Sec 1			8:30MW,12:30Th	Merritt	Min319
-Sec 2			10:30MW,2:30Th	Murray	Min319
231(Hist. of West.Civ.)		3	12:30MW,8:30F	Boyle	Min319
302(Amer.Econ.Hist. to1914)	Hist.101, 102 or appr	3	8:30MW,12:30Th	Murray	Min314
321(Europe from 1600-1815)	Hist.231	3	2:30MW,10:30F	Boyle	Min314
324(Hist. of North Dakota)	JStgorappr	3	4:30-5:45Th	Ottersen	Min305
405(Hist.of Amer.Dipl.)	Hist.102,104	3	3:30-4:45Th	Murray	Min310
460(Modern England)	Instr.appr.	3	3:30MW,11:30F	Boyle	Min314
486(Adv.U.S. History)	12cr.U.S. Hist	3	1:30MW,9:30F	Merritt	Min300
597(Research)	Hist.560,Grad.Stg.	1-3	By arrgt.	Staff	Min409
599(Thesis & Research)	Hist.560,appr	3	By arrgt.	Staff	Min409
POLITICAL SCIENCE					
204(Nat'l.Gov't.in Action)		3			
-Sec 1			12:30MW,8:30F	Amlund	AgE223
-Sec 2			3:30MW,11:30F	Amlund	AgE223
-Sec 3			10:30Th,2:30F	Kim	SE32
205(State Government)		3			
-Sec 1			8:30MW,12:30Th		Min219
-Sec 2			10:30MW,2:30Th		AgE223
301(Amer.Political Thought)		3	9:30MW,1:30Th	Amlund	AgE201
324(International Relations)		3			
-Sec 1			9:30Th,1:30F	Bond	Mor210
-Sec 2			1:30MW,9:30F	Kim	AgE201
460(Constitutional Law)		3	1:30MW,9:30F	Bond	AgE223
496(Special Topics)		3			
-Sec 1 (Gov't&Pol.Japan)	Jr.,Sr, Grad.Stg.		10:30MW,2:30Th	Kim	Min302
-Sec 2 (Comp.Legal Syst. in Near & Middle East)			7:30-10:00(p.m.)	W Sharma	Min304
596(Spec.Topics-Presidency)	Grad.Stg.	3	3:30-4:45T+arrgt.	Amlund	Min205
PSYCHOLOGY					
203(Intro.to Psychology)		4	1:30MTW,9:30F	Whittaker	Fest.Hall
215(Educ.Psychology)	Psych.203or201	3		See Education Dept.	
303(Hum.Growth&Dev.:Adoles.)	Psych.203or201	3		See Education Dept.	
304(Mental Hygiene)	Psych.203or201	3	10:30MW,2:30Th	Nelson	SE32
321(Introd.Tests&Meas.)	Psych.215	3		See Education Dept.	
324(Exper.Psych.)	Psych.323,Math329	3	1:30-4:45T	Singh	Min406
327(Diff.Psychology)	Psych.203or201	3	4:30MTW	Yando	Min406
418(Social Psychology)	Psych.203or201	3		See Sociology Dept.	
462(Physiological Psych.)	Psych.203or201	3	3:30-4:45MW	Singh	Min406
496(Spec.Topics-Pers.)	Psych.203or201	3	7:30-10:00(p.m.)	M Query	Min406
497(Research)		3			
-Sec 1 (Physiol.Psych.)	appr.		By arrgt.	Singh	Min405
-Sec 2 (Child Psych.)	appr.		By arrgt.	Yando	Min405
560(Res.Meth.inPsych.)		3	By arrgt.	Whittaker	Min405
599(Thesis & Research)	Dept.appr.	1-6	By arrgt.	Whittaker	Min405
SOCIOLOGY					
204(Introd.to Sociology)	SStg.orappr.	3	8:30Th,12:30F	Zimmerman	Fest.Hall
303(Contemp.Soc.Problems)		3	9:30Th,1:30F	Query	Min401
305(Population Problems)		3	2:30MW,10:30F	Voelker	Mor308
307(Rural Sociology)	Jr.,Sr.orappr.	3	3:30-4:45W+arrgt.	Zimmerman	Min304
418(Social Psychology)	Sr.,Sr.orappr.	3	10:30MW,2:30Th	Query	Min401
422(Dev.of Social Thtg.)	SrStgorappr.	3	2:30MW,10:30F	Query	Min300
496(Special Topics)					
-Sec 1 (Theory&Res.)	Dept.appr.	3	3:30-4:45M+arrgt.	Zimmerman	Min420
-Sec 2 (Persp. on the Nat.of Man)		3	7:30-10:00(p.m.)	Th Cater	Min309
-Sec 3 (Community)		3	7:30-10:00(p.m.)	T Burkeland	Min310
497(Research)	Sr.,Sr.orGrad.Stg.	3	7:30-9:00(p.m.)	M+arrgt.	Query
498(Seminar)		3			
-Sec 1 (Soc.Theory)	Sr.orGradStg.	3	3:30-4:45M+arrgt.	Zimmerman	Min420
-Sec 2 (CDFR Surv.of Fam.Life)ap		3	7:00-9:30(p.m.)	Th Groves	HE10
598(Seminar-Res.inMarr.&Family) Adv. Stg.,1Scr.CDFR,Soc.orPsych.		3	7:00-9:30(p.m.)	W Groves	HE10
SPEECH					
108(Speech Fundamentals)		3			
-Sec A			8:30F	Walsh	LCT
-Sec B			11:30F	West	LCT
-Sec 1			7:30MW	Staff	Adm206
-Sec 2			8:30MW		Adm206
-Sec 3			9:30MW		Adm206
-Sec 4			10:30MW		Adm206
-Sec 5			11:30MW		Adm206
-Sec 6			12:30MW		Adm206
-Sec 7			1:30MW		Adm206
-Sec 8			7:30Th		Adm206
-Sec 9			8:30Th		Adm206
-Sec 10			9:30Th		Adm206
-Sec 11			10:30Th		Adm206
-Sec 12			11:30Th		Adm206
-Sec 13			12:30Th		Adm206
-Sec 14			1:30Th		Adm206
-Sec 15			8:30MW		Adm207
-Sec 16			10:30MW		NE Rm.F.Hall
-Sec 17			11:30MW		NE Rm.F.Hall
110(Introd. to Theatre)		3			
-Sec 1			8:30MW,12:30Th	Mrnak	LCT
-Sec 2			8:30Th,12:30F		LCT
119(Theatre Practice)		1	By arrgt.	Staff	LCT
121(Phonetics)		3	8:30MW,12:30Th	Stockdell	Clinic
208(Stage Scenery&Light.)		3	10:30F	Lane	Adm206
-Sec 1			2:30-4:20MW		LCT
-Sec 2			2:30-4:20Th		LCT
209(Oral Interpretation)	Sp.108	3	10:30MW,2:30Th	West	Adm207
211(Group Dis.&conf.Leadership)	Sp108	3	10:30Th,2:30F	West	Adm207
212(Intermed.Public Spkg.)	Sp.108	3	7:30F	Ubbelohde	Adm206
-Sec 1			9:30Th		NE Rm.F.Hall
-Sec 2			10:30Th		NE Rm.F.Hall
222(Spch.Reading&Aud.Trng.)	Sp.221	3	9:30MW,1:30Th	Stockdell	Clinic
223(Speech Pathology)	Sp.220	3	8:30Th,12:30F	Sigman	Clinic
251(Debate Practice)		1	4:30-5:45W	Ubbelohde	NE Rm.F.Hall
309(Acting)		3	9:30MW,1:30-3:20Th	Mrnak	Adm.LogCab.
311(Contemp.Amer.Speakers)	Sp.212	3	8:30MW,12:30Th	Ubbelohde	NE Rm.F.Hall
320(Clinical Pract.inSpch.Corr.)	appr				
-Sec 1		1-3	By arrgt.	Sigman	Clinic
-Sec 2		1-3	By arrgt.	Stockdell	Clinic
351(Debate Practice)		1	4:30-5:45W	Ubbelohde	NE Rm.F.Hall
378(Meth.ofTchg.Speech)		3			
-Sec 1 (Gen.Sp.&Drama)			1:30MW,9:30F	West	Adm207
-Sec 2 (Therapy)			1:30MW,9:30F	Sigman	Clinic
407(Playwriting)	Dept.appr.	3	By arrgt.	Walsh	Adm201
408(Radio Spch.-Broadcasting)	appr.	3	8:30T,9:30-11:20Th	AbelRadio	Studio
490(Stage Design)		3	9:30Th,1:30F	Lane	Adm207
496(Special Topics)		1-3	By arrgt.	Staff	Adm207
498(Seminar in Speech)		3	By arrgt.	Staff	Adm201
599(Thesis & Research)		3-9	By arrgt.	Walsh	Adm201

COLLEGE OF CHEMISTRY AND PHYSICS

Department & Subject	Prerequisite	Cr.	Hour & Days	Instructor	Room
AGRICULTURAL AND BIOLOGICAL CHEMISTRY					
292(Elements of Biochem.)	Ch.231or242	3	11:30Th,3:30F	Meintzer	Ladd107
293(Elements of Biochem.Lab)	Conc.	1		Meintzer	
-Sec 1	reg.in292		1:30-4:20T		Ladd304
-Sec 2			8:30-11:20F		Ladd304
484(Biochem. Lab)	Chem.483orappr.	2	8:30-11:20ThF	Fleeker	Ladd308
494(Biochemistry)	Chem.243orappr.	3	7:30MW	Klostermann	Ladd254
594(Adv.Biochemistry)	Chem.495	3	7:30Th+thr.arrgt.	Fleeker	Ladd254

Department & Subject	Prerequisite	Cr.	Hour & Days	Instructor	Room
ANALYTICAL CHEMISTRY					
108(Qual. Analysis) Chem.105HorAppr.		5	12:30Th, 9:30-12:20MW,1:30-4:20Th	Broberg	Ladd204 Ladd309
205(Quant. Analysis) Chem.108		4	12:30MW, 1:30-4:20MW	Fleetwood	Ladd204 Ladd309
-Sec A			8:30-11:20Th,1:30-4:20F		Ladd309
-Sec B			1:30-4:20T	Fleetwood	Ladd303
481(Glass App. Fab.)		1			
GENERAL AND INORGANIC CHEMISTRY					
101(General)		5		Staff	
-Sec 1			9:30Th,1:30MW		Ladd207
-Sec 2			10:30MW,2:30Th		Ladd107
104(General)		5	11:30MW,3:30Th	Staff	Ladd207
*The following labs may be taken by those students enrolled in either Chemistry 101 or 104.					
-Sec A			7:30-9:20M	Staff	Ladd101
-Sec B			7:30-9:20Th	Staff	Ladd101
-Sec C			9:30-11:20T	Staff	Ladd101
-Sec D			9:30-11:20F	Staff	Ladd101
-Sec E			11:30-1:20M	Staff	Ladd101
-Sec F			11:30-1:20Th	Staff	Ladd101
-Sec G			1:30-3:20F	Staff	Ladd101
-Sec H			3:30-5:20M	Staff	Ladd101
-Sec J			3:30-5:20T	Staff	Ladd101
102(General) Chem.101		5			
-Sec 1			7:30MTThF		Ladd207
-Sec 2			8:30MW,12:30Th		Ladd207
-Sec 3			11:30Th,3:30MW		Ladd207
*Labs for Chemistry 102 only.					
-Sec K			7:30-9:20T	Staff	Ladd101
-Sec L			7:30-9:20W	Staff	Ladd101
-Sec P			7:30-9:20F	Staff	Ladd101
-Sec Q			9:30-11:20M	Staff	Ladd101
-Sec R			9:30-11:20Th	Staff	Ladd101
-Sec S			1:30-3:20M	Staff	Ladd101
-Sec T			1:30-3:20W	Staff	Ladd101
105(General) Chem.104		5			
-Sec 1			9:30MW,1:30Th		Ladd207
-Sec 2			10:30Th,2:30MW		Ladd207
* Labs for Chemistry 105 only.					
-Sec U			11:30-1:20T	Staff	Ladd101
-Sec V			10:30-12:20W	Staff	Ladd101
-Sec W			11:30-1:20F	Staff	Ladd101
-Sec X			3:30-5:20W	Staff	Ladd101
-Sec Y			2:30-4:20Th	Staff	Ladd101
431(Adv.Inorganic Lab) Dept.appr.		1-3	By arrgt.	Staff	
ORGANIC CHEMISTRY					
241(Prin.of Org.Chem.) Chem.105		5	8:30Th,12:30MW	Rathmann	Ladd207 Ladd304
-Sec A			8:30-11:20Th	Staff	Ladd304
-Sec B			1:30-4:20Th	Staff	Ladd304
-Sec C			1:30-4:20F	Staff	Ladd304
242(Prin.of Org.Chem.) Chem.241,Sec1		5			
-Sec 1			9:30MW,1:30Th	Slater	Ladd254
-Sec 2			1:30-4:20M		Ladd251
-Sec 3			10:30MW,2:30Th	Rathmann	Ladd207
-Sec D			11:30Th,3:30MW	Slater	Ladd204
-Sec E			7:30-10:20M	Staff	Ladd304
-Sec F			8:30-11:20T	Staff	Ladd304
-Sec G			8:30-11:20W	Staff	Ladd304
-Sec H			1:30-4:20M	Staff	Ladd304
-Sec I			1:30-4:20W	Staff	Ladd304

Department & Subject Prerequisite Cr. Hour & Days Instructor Room

ARCHITECTURE AND ARCHITECTURAL ENGINEERING

Table listing architecture and architectural engineering courses including 211 (Arch. Design & Theory), 241 (Arch. Graphics), 321 (Hist. of Arch.), 335 (Working Drawings), 344 (Bldg. Matls. & Constr.), 402 (Freehand Drawing), 411 (Arch. Design), 451 (City & Regional Planning), and 511 (Arch. Design).

CIVIL ENGINEERING

Table listing civil engineering courses including 309 (Fluid Mechanics), 316 (Soil Mechanics I), 332 (Structural Theory I), 405 (Reinforced Concrete II), 409 (Engineering Economics), 410 (Sewerage & Sew. Disp.), 430 (Struct. for Arch. III), 444 (Struct. Theory IV), and 552 (Theory of Elasticity).

ELECTRICAL AND ELECTRONICS ENGINEERING

Table listing electrical and electronics engineering courses including 313 (Circuit Analysis III), 321 (Electronics I), 322 (Electronics Lab I), 332 (Elements of Elect. Engr.), 333 (General Lab I), 357 (Electromag. Energy Conv. I), 358 (Machinery Lab I), 375 (Circuits & Illumination), 380 (Electro-Mech. Devices), 381 (Engr. Lab I), 403 (Electromag. Fields II), 429 (Comm. Engr. II), 430 (Comm. Lab II), 436 (Systems & Design I), 463 (Elect. Power Syst. Engr. II), 490 (Elect. Engr. Materials), 496 (Spec. Topics - Transistors I), 507 (Circuit Anal. V), 510 (Antennas and Waveguides), 532 (Electronics V), 540 (Computer Circuits I), 551 (Servomechanisms II), and 599 (Thesis & Research).

INDUSTRIAL ENGINEERING

Table listing industrial engineering courses including 280 (Intro. to Ind. Engr.), 347 (Safety Engr.), 350 (Work Measurement), 430 (Evaluation of Engr. Data), 455 (Syst. & Proc. Design I), 467 (Plant Layout), 470 (Anal. of Ind. Operations), 480 (Engr. Economy), 496 (Special Topics), 520 (Prod. Integration), 551 (Adv. Ind. Engr.), and 599 (Thesis & Research).

MECHANICAL ENGINEERING

Table listing mechanical engineering courses including 107 (Engineering Graphics I), 108 (Descriptive Geometry), 110 (Engr. Graphics II), 203 (Prod. Proc. I), and 204 (Prod. Proc. II).

Department & Subject Prerequisite Cr. Hour & Days Instructor Room

Mechanical Engineering-Continued

Table listing mechanical engineering courses including 216 (Metal Fab. I), 217 (Metal Fab. II), 230 (Statics), 301 (Mech. Equipment of Bldgs.), 325 (Fuels & Lubricants), 327 (Dynamics), 328 (Mech. of Materials), 335 (Basic Thermodynamics), 336 (Energy Conversion I), 429 (Internal Combustion Engine), 430 (Stress Analysis), 432 (Air Conditioning), 435 (Dynamics of Mach.), 439 (Gas Turbines), 475 (Mechanical Lab), 497 (Research), 532 (Exper. Stress Analysis), 537 (Gas Dynamics II), 596 (Special Topics), and 599 (Thesis & Research).

AERONAUTICAL ENGINEERING

Table listing aeronautical engineering courses including 312 (Aerodynamics I), 424 (Vibration Analysis), and 442 (Airplane Design I).

COLLEGE OF HOME ECONOMICS

GENERAL HOME ECONOMICS

Table listing general home economics courses including 102 (Social Usage).

ART

Table listing art courses including 100 (Intro. to Art), 101 (Fund. of Design), 111 (Costume Des. & Apprec.), 201 (Design I), 215 (Weaving), 217 (Beg. Ceramics), 302 (Home Planning & Furn.), 311 (Drawing II), 315 (Adv. Weaving), 317 (Intermed. Ceramics), 417 (Adv. Ceramics), 496 (Special Topics), and 497 (Research).

CHILD DEVELOPMENT AND FAMILY RELATIONS

Table listing child development and family relations courses including 383 (Child Dev. & Guid. I), 386 (Family Relations), 486 (Family Dynamics), 487 (Child Dev. & Guid. II), 496 (Special Topics), 598 (Seminar - Res. in Marr. & Family Adv.), and 599 (Thesis & Research).

FOOD & NUTRITION

Table listing food and nutrition courses including 148 (Introductory Foods), 150 (Elem. Nutrition), 241 (Food for the Family), 249 (Adv. Food Sel. & Prep.), 347 (Meal Management), 350 (Nutrition & Dietetics), 353 (Maternal & Child Nutr.), 355 (Quantity Food Prod.), 496 (Special Topics), 497 (Research), 498 (Seminar in Nutrition), 552 (Human Digestion), 555 (Geriatric Nutrition), 596 (Special Topics), 597 (Research), 598 (Grad. Seminar - Nutr.), and 599 (Thesis & Research).

Courses Listed By Colleges and By Departments Within

Department & Subject	Prerequisite	Cr.	Hour & Days	Instructor	Room
HOME ECONOMICS EDUCATION					
370 (Homemaking Ed. in H.S.)	HE272, Ed318	4	1:30MW, 9:30-11:20F	Benson	HE110
375 (Extension Education)	Jr. Stg.	3	12:30MW, 8:30F	Spidahl	HE33
472 (Adult Homemaking Ed.)	HEEd.370 or F&N359	3	11:30MW, 3:30Th	Ruud	HE110
475 (Student Teaching)	HEEd.472	9	By arrgt.	Staff	
476 (Tchg. Attitudes & Values)	HEEd.370	3	7:30-10:00(p.m.)	T Ruud	HE110
496 (Special Topics)					
-Sec 1 (Employment Educ.)	HEEd.370	3	8:30Th, 9:30MTWTh (1st half Quarter)	Kraft	HE110
-Sec 2		1-3	By arrgt.	Staff	HE110
497 (Research)		1-3	By arrgt.	Staff	
498 (Sr. Sem. in HEEd.)	HEEd.475	3	8:30Th, 9:30MTWTh (2nd half Quarter)	Benson	HE110
599 (Thesis & Research)			By arrgt.	Staff	
HOME MANAGEMENT & FAMILY ECONOMICS					
260 (Household Equipment)		3		Witz, Moilanen	
-Sec 1			2:30MW, 3:30-5:20M		AgE205, 215
-Sec 2			2:30MW, 3:30-5:20M		AgE205, 215
261 (Consumer Problems)		3	11:30Th, 3:30F	Smith	HE29
262 (Household Mgmt. Practices)		1	2:30-4:20Th	Hassoun	HE20
361 (Family Financial Planning)		2	8:30Th	Holmberg	HE29
461 (Home Management)		3	2:30MW, 10:30F	Walker	HE20
462 (Lab in Home Mgmt.)	HMFE261, 461, F&N347	4	10:30MTWTh, +arrgt.	Walker & Hassoun	HE20
463 (Readings in Home Mgmt.)	HMFE, 461 Par. 462	1	By arrgt.	Walker	HE20
484 (Home Nursing)		1	1:30Th, 1:30-3:20T	Jagim	HE20
496 (Spec. Topics-Housing)	Dept. appr.	4	7:30MTWTh, 4:30W	Holmberg	HE229
497 (Research)	Dept. appr.	1-3	By arrgt.	Staff	HE
TEXTILES AND CLOTHING					
124 (Fund. Cloth. Problems)	Pre-Test	5		Buehl	
-Sec 1			9:30Th, 8:30-10:20MW		HE127
-Sec 2			12:30-2:20Th		HE127
127 (Textiles)		3	8:30Th, 12:30-2:20MW	Williams	HE29
-Sec 1			9:30MW		HE33
-Sec 2			10:30-12:20M		HE33
-Sec 3			10:30-12:20W		HE33
-Sec 4			1:30-3:20T		HE33
128 (Fund. Cloth. Problems)	Pre-Test	3		Litherland	
-Sec 1			11:30F, 3:30-5:20MW		HE128
-Sec 2			3:30F, 11:30-1:20Th		HE128
226 (Intermed. Cloth. Prob.)	Art111, T&C 124 or 128	3		Rising	
-Sec 1			2:30Th, 10:30-12:20MW		HE128
-Sec 2			9:30F, 1:30-3:20MW		HE128
320 (History of Textiles)		3	9:30MW, 1:30Th	Reynolds	HE33
323 (Flat Pattern Tech.)	T&C226	4	2:30T, 10:30-12:20MW	Reynolds	HE127
			2:30-4:20Th		HE127
325 (Cloth. for Pre-School Child)	TC124 or T&C128	3	1:30Th, 8:30-10:20MW	Rising	HE128
422 (Retailing Experience)	T&C420	3	By arrgt.	Reynolds	Downtown Stores
426 (Tailoring)	T&C226.	3	2:30-4:20MW, 10:30-12:20F	Reynolds	HE127
496 (Special Topics)					
-Sec 1 (Tailoring Women's Pts.)	T&C129, 226	3	8:30-10:20Th, 1:30-3:20F	Litherland	HE128
-Sec 2	Sr. Stg, Dept. appr.	1-3	1:30T+arrgt.	Staff	HE127

COLLEGE OF PHARMACY

Department & Subject	Prerequisite	Cr.	Hour & Days	Instructor	Room
PHARMACEUTICAL CHEMISTRY AND BIONUCLEONICS					
346 (Bio-Pharmacy)	Chem. 394	3	12:30Th	Nobles	Sud120
-Sec A			10:30-1:20M	Schreibman	Sud5
-Sec B			2:30-5:20T		Sud5
-Sec C			10:30-1:20W		Sud5
-Sec D			2:30-5:20Th		Sud5
356 (Org. Pharm. Chem.)	Ph.Ch.355	4	9:30ThF, 1:30W	Shelver	Sud120
496 (Special Topics)	Dept. appr.	1-5	By arrgt.	Staff	37 Sud.
497 (Research)	Dept. appr.	1-3	By arrgt.	Staff	Sud37
516 (Chem. of Nat. Occ. Med.)	Dept. appr.	3	By arrgt.	Nobles	Sud37
536 (Adv. Med. Chemistry)	Dept. appr.	3	By arrgt.	Shelver	Sud37
563 (Bionucleonics)	Ph.Ch. 562	3	By arrgt.	Vacik	Sud37
571 (Isotope Tracer Tech.)	Ph.Ch. 570	4	By arrgt.	Staff	Sud37
596 (Special Topics)	Dept. appr.	1-3	By arrgt.	Staff	Sud37
597 (Research)	Dept. appr.	3	By arrgt.	Staff	Sud37
598 (Grad. Seminar)	Dept. appr.	1	By arrgt.	Staff	Sud37
599 (Thesis & Research)	Grad. Stg.		By arrgt.	Staff	Sud37
PHARMACOGNOSY					
361 (General Phcog.)	Phcog. 360	5	10:30Th, 3:30W, 11:30F	Schermeister	Sud224
-Sec A			2:30-5:20T	Bhatti	Sud221
-Sec B			10:30-1:20W		Sud221
-Sec C			2:30-5:20Th		Sud221
404 (Hydro. Cult. of Med. Plts.)	Phcog. 360	3	By arrgt.	Schermeister	Sud218
418 (Crystallography of Med. Prod.)		3	By arrgt.	Schermeister	Sud221
	Chem. 243, appr				
496 (Special Topics)	Dept. appr.	1-5	By arrgt.	Staff	Sud218
497 (Research)	Dept. appr.	1-3	By arrgt.	Staff	Sud218
501 (Adv. Pharmacognosy)	Phcog. 362	1-5	By arrgt.	Staff	Sud221
516 (Methods in Phcog.)	Ph. 552	4	By arrgt.	Bhatti	Sud218
596 (Special Topics)	Dept. appr.	1-5	By arrgt.	Staff	Sud224
597 (Research)	Dept. appr.	1-5	By arrgt.	Staff	Sud224
599 (Thesis & Research)	Grad. Stg.		By arrgt.	Staff	Sud218
PHARMACOLOGY					
311 (Intro. Pharmacology)	Phcol. 310	4	8:30Th, 12:30F	Reopelle	Sud208
-Sec A			9:30-12:20M		Sud205
-Sec B			2:30-5:20M		Sud205
-Sec C			2:30-5:20T		Sud205
412 (Pharmacology)	Phcol. 411	4	11:30MTWThF	Lawrence	Sud120
496 (Special Topics)	Dept. appr.	1-5	By arrgt.	Staff	Sud208
497 (Research)	Dept. appr.	1-3	By arrgt.	Staff	Sud208
502 (Adv. Pharmacology)	Phcol. 501	5	By arrgt.	Glenn	Sud208
511 (Anal. Toxicology I)	Phcol. 510	3	By arrgt.	Prouty	Sud208
596 (Special Topics)	Dept. appr.	1-5	By arrgt.	Staff	Sud208
597 (Research)	Dept. appr.	1-5	By arrgt.	Staff	Sud208
599 (Thesis & Research)	Grad. Stg.		By arrgt.	Staff	Sud208
PHARMACY					
116 (Intro. Pharmacy)	Ph. 115	2		Strommen	
-Sec 1			1:30MW		Sud208
-Sec 2			8:30Th		Sud224
209 (Emergency Treatment)		1	1:30-3:20T	Miller	Sud120
222 (Cosmetic Prin. & Tech.)	Ph. 221	4	10:30MW, 2:30Th	Norquist	Sud224
			8:30-11:20F		Sud111
318 (Pharm. Problems)		3	7:30MW	Vincent	Sud120
371 (Pharm. Preps.)	Ph. 370	4	8:30MW	Ozbun	Sud120
-Sec A			9:30-12:20MW		Sud111
-Sec B			2:30-5:20MW		Sud111
-Sec C			2:30-5:20Th		Sud111
407 (Prescriptions)	Ph. 406	4	1:30Th	Sleight	Sud208
-Sec A			7:30-10:20MW		Sud107
-Sec B			2:30-5:20MW		Sud107
-Sec C			2:30-5:20Th		Sud107
428 (Mfg. Specialties)	Phcol. 410	2	10:30F+2hrs. Lab arrgt. in	Sleight	Sud208, 106
465 (Adjusted Solutions)	Dept. appr.	3	By arrgt.	Sleight	Sud120
472 (Manuf. Pharmacy)	Ph. 371	3	11:30Th	Henderson	Sud37
-Sec A			9:30-12:20W		Sud25
-Sec B			2:30-5:20Th		Sud25
-Sec C			1:30-4:20F		Sud25
473 (Manuf. Pharmacy)	Ph. 472	3	By arrgt.	Henderson	Sud37
496 (Special Topics)					
-Sec 1 (First Aid Instr. Crse.)	Dept. appr.	2	2:30-4:20Th	Miller	Sud120
-Sec 2	Dept. appr.	1-5	By arrgt.	Staff	Sud120
497 (Research)	Dept. appr.	1-3	By arrgt.	Staff	Sud120
498 (Seminar)	Dept. appr.	1	By arrgt.	Norquist	Sud120
501 (Prod. Formulations)	Dept. appr.	3	By arrgt.	Henderson	Sud120
541 (Hosp. Pharm. Residency)	Dept. appr.	5	By arrgt.	Staff	Sud120
551 (Pharm. Chromatography)	Dept. appr.	3	By arrgt.	Vincent	Sud120
596 (Special Topics)	Dept. appr.	1-5	By arrgt.	Staff	Sud120
597 (Research)	Dept. appr.	1-5	By arrgt.	Staff	Sud120
598 (Grad. Seminar)	Dept. appr.	1	4:30T	Henderson	Sud120
599 (Thesis & Research)	Grad. Stg.		By arrgt.	Staff	Sud120

Department & Subject	Prerequisite	Cr.	Hour & Days	Instructor	Room
PHARMACY ADMINISTRATION					
240 (Pharm. Accounting)	Soph. Stg.	3	7:30ThF	Haakenson	Sud208
335 (Prof. & Public Relations)	Soph. Stg.	2	7:30MW	Haakenson	Sud208
450 (Pharm. Mgmt.)	Ph. Ad. 240, 307	4	10:30MW, 8:30Th	Haakenson	Sud120
496 (Special Topics)	Dept. appr.	1-5	By arrgt.	Haakenson	Sud208
497 (Research)	Dept. appr.	1-3	By arrgt.	Haakenson	Sud208

Field Training ROTC Campout Scheduled

Advanced Army ROTC cadets are participating in a semiannual field training exercise in Valley City on Nov. 5. All junior and senior cadets will attend. Some sophomores will also participate.

The purpose of the exercise is to study those things which cannot be effectively taught in the classroom. The subjects they plan to cover are firing of the rifle,

map reading, obstacle course, firing of weapons, first aid and a demonstration on the use of the machine gun. Practical compass and map reading problems, and physical training will be included.

The cadets will leave at 5 a.m. and return to Fargo about 10 p.m. They will eat their noon and evening meals in the field, giving them an opportunity to sample C-rations.

The seniors will instruct the juniors in maneuvers. This is to develop both skills and leadership. The cadre will supervise the instruction.

Cadets will be transported by Army trucks.

Campus Has New Coed Music Group

A new music group on campus this fall is composed of 33 coeds.

The Varsity Women's Glee Club has been formed to promote public relations between North Dakota State University and various alumni, civic and church organizations in the area. The club will perform at campus activities.

Membership is open to all NDSU coeds who have a basic musical knowledge, with final selection being made by audition.

The group will perform both sacred and secular music, a cappella or with accompaniment in up to four parts (first and second soprano and first and second alto), according to Mrs. David Lett, director.

In its first public appearance, the Varsity Women's Glee Club will perform at the Christmas Convocation.

Animal Science Professor Is Honored

William E. Dinusson, professor of Animal Science at North Dakota State University, was awarded the National Farm House Master Builder of Men award at the Biannual conclave held at Manhattan, Kan., this fall. This award is the highest honor that can be bestowed on any Farm House man by his organization.

Dr. Dinusson is a native North Dakotan and has been on the NDSU staff since 1949. He is the first person from NDSU to receive this award. He aided in establishing the Farm House Fraternity



Dinusson on this campus.

Dinusson is also nationally known for his research and articles on livestock nutrition.

The Master Builder Award is awarded to an alumni by the national Farm House organization. Candidates for the award are sponsored by one of 22 Farm House chapters from throughout the nation.

The winners are picked for

outstanding service to Farm House, contributions to worthy young men and outstanding work in their field.

They are picked by a committee from a biographical sketch, a statement of his service to the fraternity and at least three letters from other persons supporting his nomination. This material is supplied by the sponsoring chapter.

FARGO THEATRE

Southwest to Sonora lies the edge of violence!



NOW!
Cont. Shows
Daily From 1:15

MARLON BRANDO

ANJANETTE COMER

JOHN SAXON

THE APPALOOSA

"A Good Place To Meet - A Good Place To Eat"

FOR FAST SERVICE AND TASTY FOOD—IT'S THE

S. U. HASTY TASTY

Across from the Campus
AMPLE PARKING SPACE BOOTHS FOR YOUR CONVENIENCE

SUAB PRESENTS:
Cinema 66-67

TWO WOMEN

An Italian Film
Starring Sophia Loren

Sunday, Nov. 6

Ballroom, Memorial Union
7:30 p.m.

Admission: 50c

HAMBURGER SPECIALISTS


King Leo's



GRAND FORKS - FARGO - MINOT

Drive-Ins

AIRLINE PILOT TRAINING

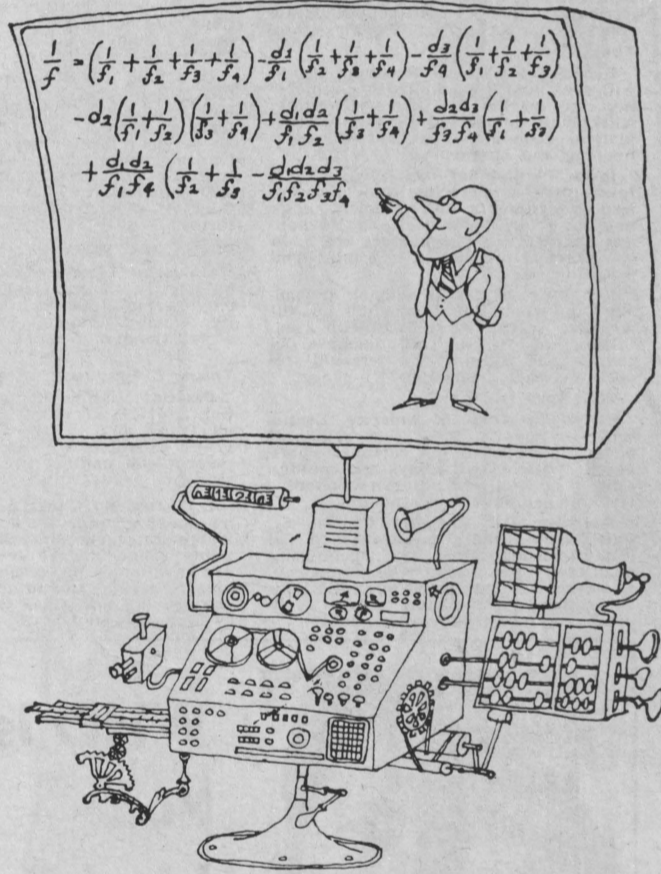


If you meet these basic requirements and are willing to acquire the necessary training, you may qualify for a flight crew position with a Major Airline:

Height - 5' 7" to 6' 4"
Age - 20 to 27
Vision - 20/20 uncorrected
Education - 2 years of college
Pass Qualifying Examinations

For Bulletin Contact—

HERROD SCHOOL OF AVIATION
Phone 259-6152, Area Code 406
Logan Field, Billings, Montana



If communications were good enough, you could stay in the sack all day

Moving your body around is highly inefficient.

If communications were perfect, you would never have to. Of course, you would still have to get exercise. But that's your problem.

We want to make it easier for you to contact people, learn, get information, attend lectures, and hold meetings.

We developed Picturephone* service so you can see as well as talk when you call. And be seen, too. We introduced Tele-Lecture service (two-way amplified phone calls) to let you hear lecturers in distant locations. And so you could ask them questions no matter how far away they were.

Right now, many students can dial from their dormitories to a language lab. Soon a student will be able to dial into a computer thousands of miles away to get information for his courses.

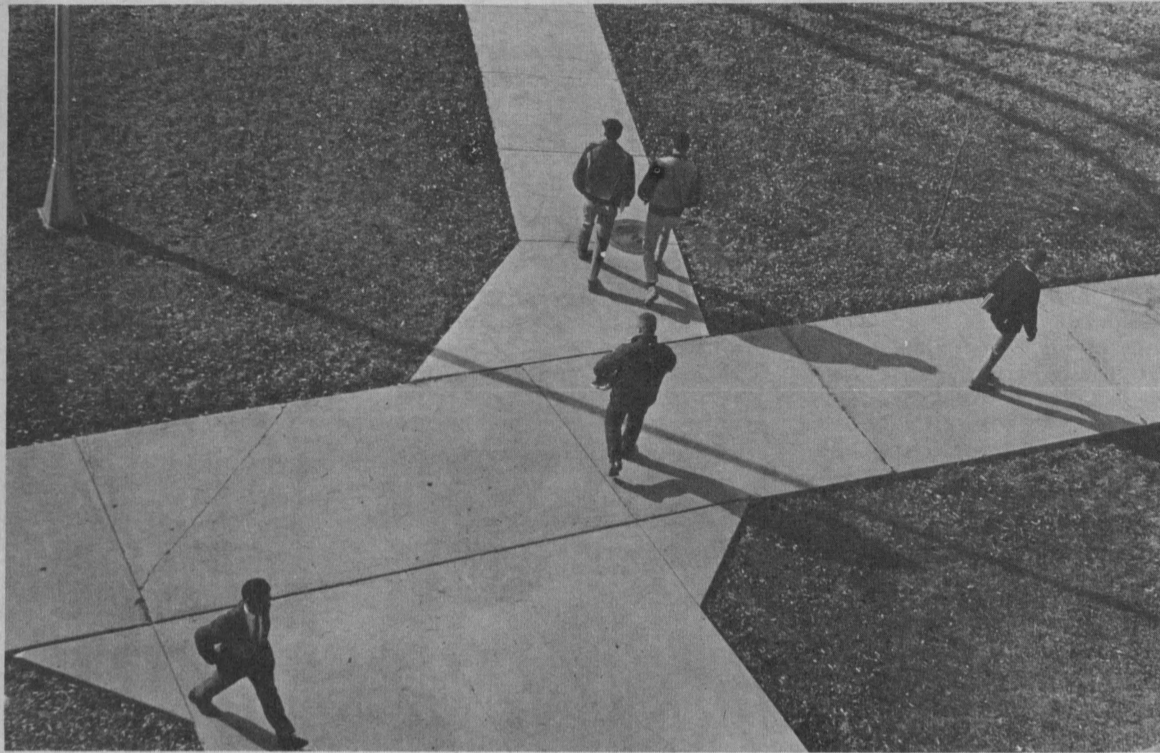
Depending on the nature of the information, he might get his answer back audibly, printed on a teletypewriter, as a video image, or a facsimile print.

Some of these services are available now. Others are being tested.

For the next week or so, better get a move on.

*Service mark

AT&T  **Bell System**
American Telephone & Telegraph and Associated Companies



THE POST-MID-TERM Class attendance dips is demonstrated by the crowd leaving South Engineering during class break.

Placement Opportunities

Wed., Nov. 2—

Collins Radio Co., Cedar Rapids, Iowa, will interview industrial, electrical and mechanical engineering grads at all degree levels. Computer application assignments are available for advanced degree mathematics majors in research areas. Electro-mechanical design, circuit design and production quality control assignments are available to recent grads.

Ling, Temco, & Vought, Inc., Dallas, Tex., is an electronic-aerospace organization involved in the development of command and control aircraft. Tactical warfare engineering students may qualify for assignments in propulsion, guidance, aeroballistics, aerodynamics, reliability systems, design, automatic controls, etc.

Allen-Bradley Co., Milwaukee, Wis., design, develop and manufacture quality motor controls and electronic components. Positions are available for engineering grads in sales, manufacturing, design, research and development and formal training programs.

Wed. & Thurs., Nov. 2 & 3—

General Electric Co., will seek interviews with students majoring in electrical, industrial, mechanical engineering and physics for positions in research, development, design, production, manufacturing and sales. Opportunities are also available in plant engineering, product, service and systems engineering.

Thurs., Nov. 3—

U. S. Coast and Geodetic Survey, a newly formed organization of the government, is consolidating the Coast & Geodetic Survey, Weather Bureau and Radio Propagation Labs. Engineering, mathematics and physics students will be interviewed.

Western Union Telegraph offers electrical engineering grads training at company expense to become supervisory engineers for both installation and maintenance of various electronic apparatus including computers.

Thurs. & Fr., Nov. 3 & 4—

Dow Chemical Company, Midland, Mich., opens interviewing to junior, senior and grad students in all phases of pharmacy, chemistry, engineering and agriculture technology.

Fri., Nov. 4—

Hughes Aircraft offers advanced work in fields of satellites, missiles, radar, computers, microwaves, semiconductors, nucleonics, lasers and materials sciences. All electrical engineering and physics students at all degree levels may register on the sign-up sheet for a personal interview.

Farmers Home Administration offers Assist. County Supervisory positions to students graduating from the College of Agriculture. Summer employment opportunities will also be offered to agricultural students who have completed one year of academic work.

Central Soya Co., Fort Wayne, Ind., is involved in soybean processing, feed manufacturing, grain merchandising, poultry processing and production and isolated protein research and marketing. Positions open include accountants, grain merchandising, plant engineering, production management, credit and sales.

Mon., Nov. 7—

Austin Co. is an engineering construction company. Its main purpose is to design and build large, complex structures throughout the world. While the newly graduated engineer

will be making a real contribution, his first year or so is considered a training period.

Ohio Extension Service, Ohio State Univ., is seeking home economics and agriculture grads to fill county extension agent vacancies in their state.

Tues., Nov. 8—

Green Giant Co. of Lesueur, Minn., will seek to fill positions in engineering and marketing. Primary interest will be students majoring in mathematics, economics, agriculture, engineering and chemistry.

Iowa Public Service, Sioux Falls, Iowa, offers operating and distribution assignments to electrical engineering grads. Industrial and Mechanical engineering assignments are open in electrical production and industrial usage.

Retail Credit Co. is seeking permanent or part time inspectors to fill positions in the Fargo-Moorhead area. Duties include checking business accounts and submitting personal reports on each inspection.

Wed., Nov. 9—

Packaging Corp. of America, Evanston, Ill., manufacturer and seller of paper board, folding cartons, corrugated containers, displays and molded pulp products, will interview chemistry and engineering students.

Northwestern Refining Co. of St. Paul, Minn., seeks applicants to fill numerous marketing and accounting positions open with the company. Management training is provided with sales openings available to both technical and non-technical graduates.

Geigy Chemical Corp. will be interviewing for field sales positions in the agricultural division of the company. Assignments consist of calling on distributors, dealers and agricultural leaders. Putting on demonstrations and coordinating meetings will be included in making product performance evaluations.

U. S. Civil Service Comm., representatives from various federal agencies will meet with students interested in learning more about careers in federal service. The federal service entrance examination will be administered on campus Saturday morning at 8:30 a.m. in the Town Hall, Union. Contact placement for registration forms.

Thurs., Nov. 10—

Universal Electric Corp. of Owasso, Mich., will be interviewing electrical engineering students interested in design, manufacturing and marketing of fractional h.p. motors.

Thurs. & Fri., Nov. 10 & 11—

Pacific Missile Range, Pt. Magu, Calif., offers training assignments to electrical and electronic engineering grads. Positions are also available for mechanical engineering and physics students.

E. I. Dupont Denemours & Co. will be seeking interviews with mechanical engineering and chemistry graduates at all degree levels. Positions are available in research, development; design, manufacturing, plant engineering and sales throughout the 79 plants located in 28 states.



WHO Is Your Ideal Date?

Thousands use a Computer for a Live Answer to this Question . . .

Your IDEAL Date . . . such a person exists, of course. But how to get acquainted? Our computer processes 10,000 names an hour. How long would it take you to meet and form an opinion of that many people?

If you are a college student under 25 years of age, you will be matched with five persons of the opposite sex from our files, with the highest degree of compatibility with you and residing nearest to you. Simply call your local representative at the phone number if listed below, and request a questionnaire; or mail \$3.00 processing fee to address below.

Each of the five will be as perfectly matched with you in interests, outlook and background as computer science makes possible.

COMPATIBILITY TESTING is nationwide, but its programs are completely localized. Thousands of vigorous and alert subscribers, all sharing the desire to meet their ideal dates, have found computer dating to be exciting and highly acceptable.

So hurry and call for your questionnaire, or write—
COMPATIBILITY TESTING
 (COLLEGE PROGRAM)
 PHONE (206) 531-4032
 11457 PACIFIC AVENUE • TACOMA, WASHINGTON 98444

Final Deadlines Are Given On Coed Dorm Contracts

The final deadlines have been set for residence hall contracts for women, according to Miss Billie Sherris, co-ordinator of women's residence halls. The deadline for lease or change in contract is Monday, Nov. 7.

Application deadline for residence hall admission for winter quarter is Wednesday, Nov. 10.

A release from a residence hall contract will be given to students withdrawing from college, student teaching, getting married, living in the home management house and for other approved reasons.

Vacating rooms requires the filing of a written request with the Head Resident and permission in writing from the Director of Housing. These release forms may be obtained from the residence hall counselors.

Students requesting a change in contract may obtain a form from the co-ordinator of women's

residence halls. Room change and hall transfers are limited. Board changes are being accepted.

Board changes are permitted only in the fall of each academic year. All board changes that are approved are for the balance of the academic year and become effective the beginning of winter quarter.

Board contract changes include a switch from five-day to seven-day or seven-day to five-day for Weible Complex. Contract changes from Burgum, Ceres and Diran on the meal ticket basis are the same as Weible Complex. In addition, they may file a release from contract or request for contract.

Applications have been received requesting residence hall admission for 22 students winter quarter.

November 8th

Development Through Leadership

ELECT

Dr. James O. Whittaker

Professor of Psychology at North Dakota State

STATE SENATE
21st DISTRICT

Whittaker for Senate Committee (Gus DuChesne, Chairman)

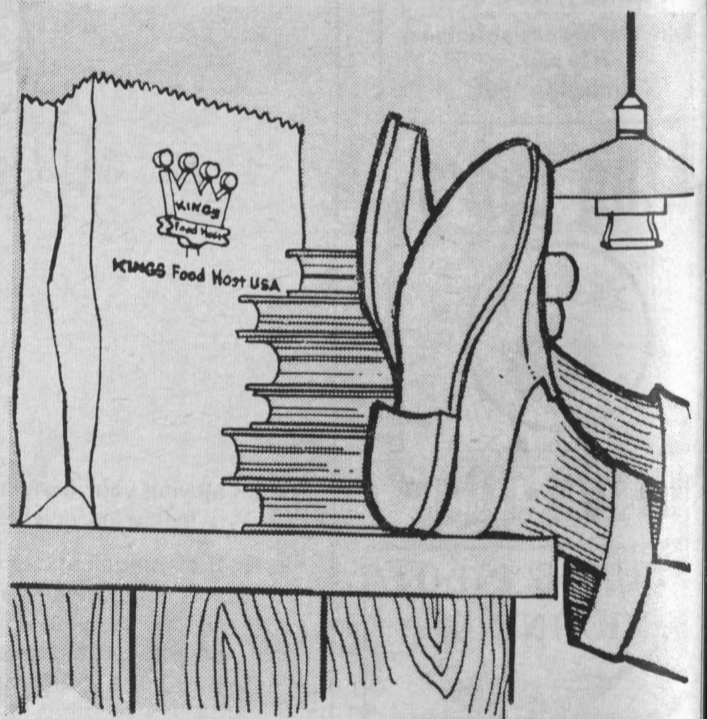


RIDE A

KONEN CAB

An Easy Way To Remember The Good Service Number

AD 57-3-57



NEVER FEAR... KING'S IS HERE!

World's Best Hamburger / Onion Rings
French Fries / Soups / Salads / Desserts



KING'S Food Host U.S.A.

DRS. MELICHER & PRESTON

Optometrists Telephone 232-8353

1st Ave. & Roberts Street
Fargo, North Dakota

AMERICAN LUTHERAN CHURCH

12th Ave. & 10th St. N.

SUNDAY WORSHIP

9:00 & 11:15 A.M.

(Communion 1st Sunday)

Albert E. Erickson, Pastor



"THE DANGLING CONVERSATION" and "Sounds of Silence" are but two of the songs to be performed by nationally acclaimed writers-singers "Simon and Garfunkel" in their performance at North Dakota State University this Friday.

"Simon And Garfunkel" Stage Field House Show This Friday

Simon and Garfunkel will be presented Nov. 4, at 8:45 p.m. in the Field House.

Simon and Garfunkel became famous about a year ago when they put out the song "Sounds of Silence." Since then they have skyrocketed to the top in record sales and personal appearances. Not only are they accomplished singers, but they also write most of the music they sing. This is the reason many of their songs are controversial.

Two songs "Sounds of Silence" and "The Dangling Conversation,"

criticize the lack of communication in the world today.

Their latest song "Silent Night 7:00 News" has Simon and Garfunkel singing "Silent Night" in the background while a broadcaster is giving the 7:00 news of riots, murder and the strife in Viet Nam. This gives a contrast of the hopes of man and the reality of the world situation.

Tickets are on sale at Daveau's and the Union for \$1.50 general admission, \$2.00 reserved and \$2.50 for non-students.

STUDENT SUMMER JOBS IN GERMANY 1967

Offered by LUFTHANSA German Airlines and in cooperation with the German Government Labor Office.

Students, with minimum age of 18 years and some knowledge of the German language, both male and female may work on farms, industry, construction or in hotels, restaurants, hospitals, or homes for children or the aged.

No fee is charged by LUFTHANSA for assisting students in securing summer jobs in Germany. For further information and the official folder and application form, Please write to:



Lufthansa

German Airlines

Lufthansa German Airlines, 814 Roanoke Building

Minneapolis, Minnesota 55402



When it comes to politics, is big business a Mugwump?

Some sharp tongues define "mugwump" as a political animal with his "mug" on one side of the fence, his "wump" on the other. Clearer heads claim it a stamp of independence. The definition and corporate stance Western Electric takes is strictly nonpartisan.

But nonpartisan as WE must be, we recognize that, to be an effective citizen, the individual must become a political partisan. And it means being more active than just showing up at the polls. So we do our best to encourage our 170,000 people to express their political leanings — in whatever direction.

We do it by sponsoring a "Democracy in Action" program that takes no sides, but explores all angles. WE people — white collar, blue collar — lead it. Long before elections, courses are given at WE locations. Background subjects include such Soc. and Eco. considerations as — The Persistent Problem of

Unemployment... The Negro's Long Struggle... America's Balance of Payments. Booklets are handed out that answer questions like: "How can I get started in politics? How can I use my talents to serve my party?"

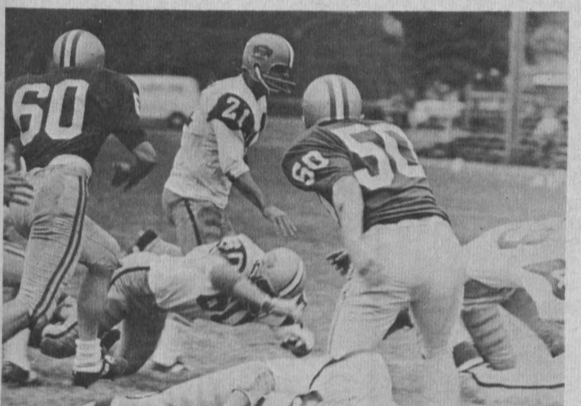
Before elections, *Back Your Party* rallies are held. Bunting and posters hung. Politicians from both national parties are invited to speak. A dialogue develops.

Thousands of WE people participate. It stirs up their political juices. Helps make them better informed, ergo: better citizens.

As a national company, in the Bell System to make ever-better communications equipment, we believe such basic communications are vital. It's also fun!



Western Electric
MANUFACTURING & SUPPLY UNIT OF THE BELL SYSTEM
AN EQUAL OPPORTUNITY EMPLOYER



SCORING RUN begins (above left from top to bottom) as Ken Rota follows pulling guards Bob Sciacca (64) and John Heller (60) around left end, passing a prone Mike Hasbargen (43) (bottom) and (right top to bottom) beats the last USD defender in a footrace to the goal line.

Defensive Effort Affords Win, Assures NCC Tie

by Neil Thomas

A tremendous defensive effort and single touchdowns in each half led the Bison to a 13-0 shut-out win over the University of South Dakota Coyotes at Vermillion Saturday.

The victory assured the Bison of at least a tie in the North Central Conference and it was their 24th straight victory.

The Bison defense held the Coyotes to 34 total yards, 15 by passing and 19 by rushing. The Coyote offense was able to pick up only three first downs the whole game, one coming on a penalty.

Coyote quarterback Jim Nixon was able to complete only five of 18 passing attempts. He was subjected to a constant rush by the Bison forward wall and his receivers were never able to get open against the Bison secondary.

Offensively, the Bison racked up 21 first downs on their way to 321 net yards, 185 by rushing and 136 by passing.

Mike Hasbargen led the Bison backfield trio with 62 yards on 15 carries. Ken Rota had 53 yards in 12 carries and one touchdown and Mike Belmont had 44 yards on 16 tries and caught an eight yard touchdown pass in the third quarter. Rota's touchdown came on a nine yard run in the second quarter.

Ken Blazie's string of consecutive extra point conversions was broken following the second Bison touchdown when a Coyote defender blocked the try.

Although the Bison were guilty of some mistakes during the game, the Bison coaches were

generally pleased with the performance.

"We were disappointed with the mistakes but were pleased with the execution," stated Coach Carl (Buck) Nystrom. He went on to say "We had been worried all week about this game. The defense did a fine job, both up front and in the secondary."

North Central Conference

	W	L	Pct
N. D. State	5	0	1.00
U. of N. D.	3	1	.75
State Col of Iowa	3	1	.75
Augustant	2	2	.50
U. of S. D.	1	4	.20
Morningside	1	4	.20
S. D. State	1	4	.20

Games Area To Hold Ping Pong Tournament

A ping pong tournament will be held on Saturday, Nov. 5, in the Games Area of the Union. First place trophies will be awarded in mens' and womens' singles divisions. In the doubles division, two first place trophies will be given to the mens' and womens' teams.

The winners may have an opportunity to participate in the Association of College Union Tournament. Sign-up places for the tournament are in the game area and the coat check room of the Union.

The trophies will be awarded at the end of the tournament.

Tournament schedules are 9 to 10 a.m., girls' singles; 10 to 11 a.m., girls' doubles and 2 p.m., boys' doubles.

National Qualifying

Cross Country Team To Enter NCC Meet

Six varsity and two freshmen Bison cross-country runners will be entered in the North Central Conference meet at South Dakota State University at Brookings this Saturday.

Varsity runners are Brian MacLaren, Bill Haugen, Roger Olson, John Haskins, Jerry Rafferty and Bob Parmer.

Entered in the freshman division will be Neil Graf and Dave Zuger.

The host SDSU team is the defending champ of the meet. They are rated the favorite of the event.

The Bison are in the middle of the battle for the runner-up spot. As Coach Roger Grooters stated, "We have a good chance to take second or third."

The University of South Dako-

ta will enter Dave Heffern who was third in the national cross-country meet last year.

The meet is a qualifier for the NCCA National Cross - Country Meet to be held in Wheaton, Kan. on Nov. 11. Entries in the national meet will be given to the top

ten places on the four mile course this Saturday.

The Bison's chances for placing runners in the national appear good, and as Grooters stated, "We have three or four boys that could make it."

NWNL LIFE INSURANCE COLLEGE PROTECTOR PLAN

*Available to Students Up to Age 24

\$ 5,000 of Life Insurance only \$20 Per Year

\$10,000 of Life Insurance only \$30 Per Year

See Me:

BOB HECK

Your College Representative

Phone: 232-8015

Dr. M. A. Bursack

Optometrist - Phone 235-8727
Black Building
Suite 502
Fargo, N. Dak.

WE AIM TO PLEASE

Corsages, Bouquets, Centerpieces
Blooming Plants & all Cut Flowers
in season.

YOUR FLOWER MARKET

All Occasion
Flower Supply



By All Occasion
423 N P AVE

Phone 232-8979

THE ALL NEW HIGHWAY HOST



Serving Better Food 24 Hours
A Day

Carpeted Dining Room

Ample Free Parking

While you are here why not fill up with Apco Super
Auto blend gasoline and save 2c per gallon.

HIGHWAY HOST

3001 Main Avenue

Pecan Bowl Champs Former Players Lead Varied Lives

by Noel Jordan
The 1965 Bison team set a standard, which fans hope will be duplicated this season, by being recognized as the number one small college football team in the nation by both UPI and AP press polls. To support this honor they went on to defeat a tough scrambling team in the nationally acclaimed Pecan Bowl.

At the backbone of last year's champs were nine hard-hitting seniors, most of whom played on our rugged defensive team.
Two of the tri-captains, Gene Gebhards and Ardell Wiegandt, both all conference linebackers, led the charge. Wiegandt is assisting with the Bison freshmen as line coach, while completing a master's degree in administration. Last year, Wiegandt received honorable mention to the Little All-American football team.

Gebhards, who signed with the Houston Oilers, is coaching in the Continental Football League. Bothered with boils on his head during Oiler tryouts, he had to quit. Gebhards will return to finish his education here winter quarter.

Ron Hanson, an all-conference safety, is also assisting the Bison freshmen as defensive secondary coach. Hanson, who also signed with the Oilers, will complete an Industrial Engineering curriculum before trying out with Houston this summer.

A top scholar as well as linebacker, Jim Schindler is representing North Dakota State University in Oxford, England, as a Rhodes Scholar.

Former middle linebacker John Newman is returning to school next quarter to receive his degree in Agricultural Engineering.

Steve Irgens, an all-conference end, and Roger Wallentine round out the defensive stalwarts. Irgens, a business major, will join the Air Force at the end of this year. Wallentine is practice teaching in physical education at Moorhead High and may enter graduate school next quarter.

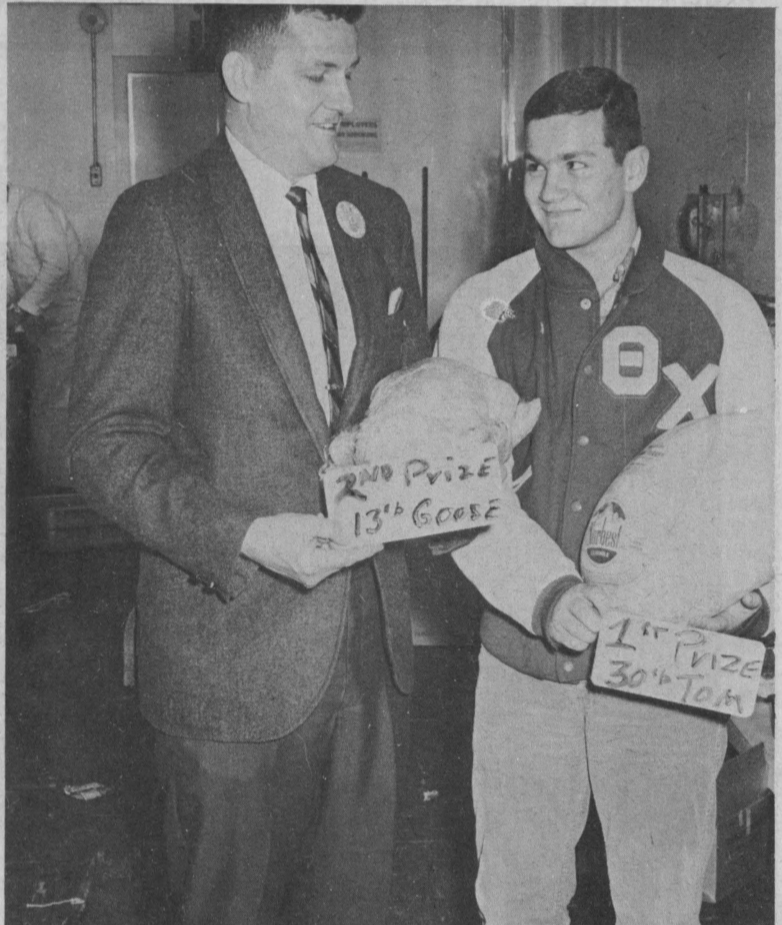
Both all-conference choices,

Gary Benson and Rich Mische, led the Herd's thundering offense. Benson, a physical education major, is practice teaching at Fargo Central. Mische graduated in Electrical Engineering and works in California.

Freshmen Finish Unbeaten

by Neil Thomas
The Baby Bison football team wrapped up their 1966 football season with a resounding 49-0 stampede over the South Dakota State freshman team last Saturday afternoon at Brookings.
The win was the fourth for the team and it gave them an unbeaten season.
Halfback Tim Mjos and end Les Nicholas teamed for all the scoring as Mjos scored five times on runs covering 70, 55 and 16 yards and caught two touchdown passes from Bruce Grasamke on plays of 70 yards each.

Nicholas caught his fifth and sixth touchdown passes of the season on 55 and 20 yard scoring plays.
Kicker - halfback Mike Conze-mius kicked five extra points, ran for another and had the last one blocked as he totaled six points in the contest.
The fine season which the team enjoyed is a reflection of the hard work which the team showed and the able coaching of Erv Kjelbertson, head coach; Ardell Wiegandt, line coach; Ron Hanson, defensive coach and Bill Sturdevant, back-field coach.



WHO WILL BE THE WINNERS of these prizes in tomorrow's IM "Turkey Run"? Holding the prizes are (left) Bud Belk, head of intramurals and Chuck Steinweg, IM board president.

All-Star Game Today TKE Captures IM Touch-Football Crown

TKE (1) defeated Theta Chi (1) team 18-0 to capture the 1966 Intramural Football Championship. They bumped ATO (1) and Kappa Psi in the process. SAE whipped Kappa Psi 18-12 for third place.

The results of last weeks finals were posted as follows:
In the first round, YMCA beat SAE (1) 12-6; Theta Chi whopped Sigma Nu 18-2; Kappa Psi licked SAE (2) 6-0 and TKE defeated ATO 18-0.
In the second round TKE aced Kappa Psi by 33 yards in overtime, and Theta Chi edged SAE 6-0.

This year the "Coca Cola" distributor will sponsor an intramural all-star game today at 4:30 p.m. at the IM Field. It will pit the champion TKE's against an all-star team consisting of one man from every other team. "Coke" will be served to the players afterward.
The long distance "Turkey Race" will be held tomorrow at Elephant Park. Team numbers

were handed out along with a map of the course at this week's meeting. Awards will be given directly after the race.
Bowling schedules were announced this week. Only one forfeit will be allowed each team.

WOULD YOU:

like to work for a company that will have more than 300 management openings within five years—a company that promotes from within? You would? Then consider RETAIL CREDIT COMPANY, the world's largest source of business information.

ON-CAMPUS INTERVIEW

Wednesday, November 2, 9:00 to 5:00

RETAIL CREDIT COMPANY
Home Office:
Atlanta, Georgia

Neil Thomas - - - Another Big One Waits On Coast



With the Bison, playing the number two ranked team in the nation has gotten to be old stuff. They do it again this Saturday and this time it is the Aztecs from San Diego State who have made the long climb up the rankings to the runnerup spot.

When the Bison meet them this Saturday, they will be facing a team which combines a strong running attack and a fine passing game.
Last year San Diego State quarterback Don Horn completed 123 of 206 passes for 21 touchdowns and 1,688 yards. He is currently holding a high position in the national rankings for passing and total offense.

Halfbacks Nate Johns and Don Shy lead the rushing game as attested by the statistics which they compiled last year. Johns accounted for 921 yards and an eight yard average and Shy rolled up 875 yards and held a 6.2 average. Shy, a former track star, has been timed at 9.6 seconds in the 100-yard dash.

San Diego State's 1966 schedule included two teams who were also on the Montana State schedule.

San Diego State defeated Weber State 38-34 and Montana State beat the same team by a 45-36 score. Fresno State was a loser to San Diego by a 34-13 count and the Montanans also defeated them but by a 55-6 margin. Montana, as everyone knows, was a 35-23 victim of the Bison. That item seems noteworthy.

No matter how you look at it, Saturday's game will be possibly the toughest game of the season, but the Bison have had tough ones before.

FOG HIDES GAME

The Bison will have a chance to play under some unusual weather conditions at San Diego. The coastal cities are noted for the heavy fog which sometimes rolls in and obscures such things as football games, as was the case in last Saturday's game between San Diego State and Fresno State.

The fog set in at half-time and the crowd of 15,000 was unable to see as much as the hash marks the rest of the night.

The regional telecast of the game had to be discontinued because the announcers were unable to see the players.

FREE BOWLING

WRA will sponsor free bowling at the Union bowling lanes, Saturday morning Nov. 5 and 12 from 9 a.m. to 12 noon. The event is open to any woman student.

WRA advisor, Elsie Raer, and several physical education majors will assist anyone who wish instructions.

JIGGS PIZZA

PHONE 235-7591
OPEN:
7 Days a Week
6:30 A.M. To 2:00 A.M.
SERVING PIZZA 4:00 P.M. TO 2:00 A.M.
YOUR HOSTS: *Jiggs & Grace*
PERKINS PANCAKE HOUSE
209 BROADWAY

Anyone can GOOF.

With Eaton's Corrasable Bond Typewriter Paper, you can erase that goof without a trace.

Not a telltale smudge remains. A special surface permits quick and easy erasing with an ordinary pencil eraser. For perfect papers every time, get Corrasable. In light, medium, heavy weights and Onion Skin. In handy 100-sheet packets and 500-sheet ream boxes. At Stationery Departments.

Only Eaton makes Corrasable.[®]
EATON PAPER CORPORATION, PITTSFIELD, MASSACHUSETTS

Sex Crimes Speaker Says Park In Well-Lighted Area

The problem of sex crimes was discussed by Lt. Henry McCormick from the Fargo Police Department at Weible Hall, Oct. 26.

The dorm lounge was filled with girls who were present to hear the talk, which lasted from 10 p.m. to 11 p.m.

A film about child molesters was shown. The film was about two girls, eight and nine years old, who were raped and murdered. Actual police pictures of the bodies as they were picked up were shown. The film ended by saying that a few minutes of instruction could be worth a lifetime of grief.

The film brought out several points:

1. It is hard to believe that something as terrible as a sex crime can happen to anyone you know.
2. Information about sex perverts should be given to preschool children; this information should be combined with safety rules and rules of good conduct.
3. Children should be taught to never accept anything from or to go with a stranger, and if a stranger approaches them or touches them, they should immediately tell their parents or a policeman.
4. If you see a strange man around a group of children, report it to the proper authorities.

After the film, McCormick told the group that Fargo has had a

problem with sex crimes for about four and a half years. The first rape victim was a North Dakota State University student who was parked north of town with her boyfriend. A man with a gun opened the car door, forced the boy into the trunk of the car and raped the girl.

Armed men have entered several homes in the Fargo - Moorhead area and attempted rape. A man with a gun has also approached a couple walking through Island Park, a woman by St. John's Hospital and a woman by St. Luke's Hospital.

McCormick offered the following suggestions to prevent any further instances:

1. Always lock your car.
2. Park in a well-lighted area.
3. Have your car key in your hand before you leave a building so you don't have to dig in your purse.
4. Look in the back seat before you get into a car.
5. Lock the door as soon as you get into the car.
6. If you are sitting in a parked car, make sure the doors are locked.
7. Don't allow a boy you have just met to take you home.

McCormick ended the talk by showing some easy methods of self-defense in case of attack.

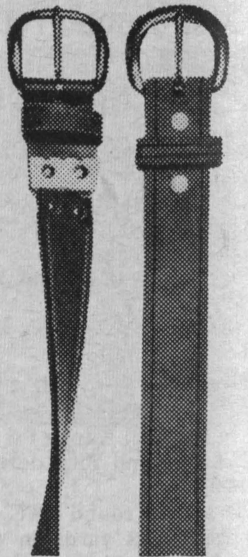


CAMPUS CUTIE ON HALLOWEEN night was found lurking in Ceres Hall.



THIS IS A HOLD-UP.

The big guys are here. Take one of 'em (or both) and you're a cinch to be boss. Twist the swivel buckle on the 1 1/4" saddle-stitched reversible belt and you'll see brushed denim on one side, oiled leather on the other. \$4.00. Or pick the 1 1/4" sueded saddle-stitched job at \$3.50. Be on the lookout for another big deal—a 26" x 39" poster of Bogey! Just send in the Fife & Drum Paris tag to Paris Belts; P. O. Box 5269; Chicago, Illinois 60680 with half a buck.



Fife & Drum Belts by Paris®

Stop down and see Bill Silver, Noel Jordan, Mike Kissick and Tom Bohnet



Straws

Squire Shop

Where The Eye Is On Style

102 Broadway

BIG FAVORITES ON CAMPUS

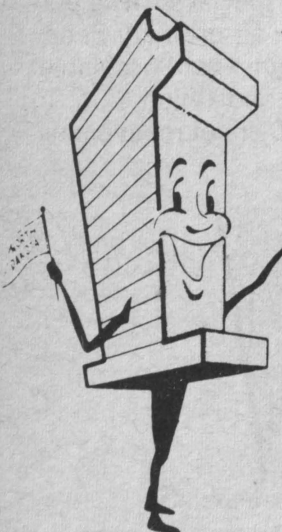


BUY and WRITE

20 CHECKS FOR
\$250

Your Name Printed Free On Every Check

- ★ NO MINIMUM CHARGE
- ★ NO OTHER CHARGES



Freddy First

Sez
"NDSU STUDENTS ARE ALWAYS WELCOME"



MEMBER F.D.I.C.