



LITTLE INTERNATIONAL ROYALTY, including Queen Carol Stabo HE 2 (left), and attendants Janet Eklund AS 2 (center) and Candy Wolf HE 3 (far right), surround this year's manager, Roger Halvorson AG 4.

The Spectrum

Little I Opens Friday With Honors Banquet

The 41st Little International, which includes showmanship contests; agronomy, agricultural engineering and home economics shows and 4-H and FFA crop-

judging contests, will open Friday evening with a banquet.

Clark Robinson, president of North Dakota Farm Bureau, will deliver the principal address at the Saddle and Sirlain Club's banquet honoring R. D. Magill of Verona as "Man of the Year" in North Dakota agriculture.

Robinson's speech will start the 1967 Little International activities at 7:30 p.m., February 10, in the Food Center.

Magill is the 53rd "Man of the Year" award winner chosen to the Saddle and Sirlain Hall of Fame at Sheppard Arena.

During the banquet North Dakota State University's Senior and Junior Livestock Judging Teams and Meats Judging Teams will be introduced by their coaches. The J. H. Sheppard Trophy will be awarded to the outstanding senior judge.

The Little I's Saturday night show will begin at 7:30 p.m. in the Sheppard Arena. The show includes the showmanship, fraternity calf-tying and women's cow-milking contests.

He supports the establishment of a student traffic court and the creation of a student committee which would be responsible for informing the student body on issues before the State Board of Higher Education and the state legislature, and would do necessary

Buchanan and the state legislature, and would do necessary (Continued on Page 12)

Polls for Monday's student government election will open in the Union, Food Center and in Minard Hall at 8 a.m. and close at 6 p.m.

Polling places will also be set up in the dorms from 4-6 p.m. Candidates for one and two year senate terms are pictured on pages 8-9 of this issue. Six candidates will be elected in each of the senate races.

Vol. XLVI, No. 19 North Dakota State University, Fargo, North Dakota February 8, 1967

Monday Elections Coed Enters Two-Way Campus Presidential Race

by Glenn Solberg
Two candidates are seeking election to the office of student body president in Monday's election. Candidates for offices in student government will discuss their platforms tonight at a coffee hour in the Union Ballroom at 8 p.m. and Thursday evening in the Food Center at 8 p.m. Recent history of student government shows no record of a coed vying for the position of student body president.

This year tradition has been broken by the entrance of Marilyn Mathison AS 3 into the SBP race. "I am challenged," states Miss Mathison, "by the opportunities presented by this position to make a positive contribution to the University — opportunities to encourage student concern, which is the most essential factor in

achieving active, successful student government."

She adds that the office of SBP should be one of a public relations nature. The president should serve the entire student body by encouraging interest and participation in campus life by all students.

His role should be a constructive one, aimed not so much at initiating his own favorite new measures, but rather at encouraging concern among the student body, according to Miss Mathison.

"The person in the executive position cannot dictate policy, but he can and should offer creative guidance to the senate and its constituents. Any change or any new program cannot be legislated and implemented without general student support," she concluded.

Opposing Miss Mathison is Larry Fuglesten AS 3 who states that he will "seek to find a clearer understanding of the role of student government in relation to faculty senate and the office of

the Dean of Students."

Fuglesten advocates a system of obtaining student discounts from downtown merchants. "Due to the unique situation of having three colleges with 10,000 students enrolled in Fargo - Moorhead there is an excellent opportunity to try what other student governments have developed in the area of student discounts," he states.

He continued that, "This is entirely feasible because of the force which students have on the economy of the F-M community, which is a major distribution center in the upper midwest."

Running for student body vice-president are three student senators: Doc Buchanan, Greg Kapaun and Mick Anderson.

Buchanan's campaign is based upon four issues.



Fuglesten



Buchanan



Robinson



Mathison

As I

See It . . .

Students in February and the groundhog have much in common; both come out of their holes sometime during the month, look around and then return to their safe secure abodes.

While the animal is looking for his shadow the student is looking for student government.

The groundhog climbs back into his hole whether or not he is scared by what he sees and so does the student even if he is elected to senate.

This race is different than those in past years if only because there are two posts open in the executive branch. More than that, this campaign is characterized by one strong candidate in the president and vice-president races and many inexperienced persons of somewhat questionable competency running for senate.

WHAT AN ANGEL

Larry Fugelsten, the angelic looking frontrunner for the top spot, is going to make a great leader if he does not get bogged down in the establishment which has made him. He is well organized, efficient and knows the ways of campus politics better than any other candidate since Bill Findley.

ANDERSON IN 1867

The race for vice-presidency is less clear. Mick Anderson has the ability and the experience but

this is counter-balanced by his inbred conservatism. His running in 1967 is much like Goldwater's campaign several years ago: Out Dated.

While Anderson's philosophy is a detriment, neither Greg Kapaun nor Doc Buchanan, his opponents, are much better.

So look forward to Fugelsten and Anderson as your next two leaders, and hope that they will accomplish more than did their predecessors.

THE FIRST STREAK

While patriotic students are turning their energies for a short while toward running for election, in larger number than in recent years, another group of literally fired-up males have been doing a little streaking of their own.

It seems that a few Co-ops have been taking rolls in the snow after hot showers and the Sigs didn't want to be outdone.

Last Friday night, or technically Saturday morning, two men were seen zooming from somewhere around the Sig house toward University Drive, then through the 1 a.m. traffic at the Dinan interchange, over to the Union and then back in the direction from which they came.

So what is so unusual about this? Well if you remember, last weekend sported some typically chilly North Dakota weather, and

the streakers were not quite dressed for the occasion. To get to the point they were not dressed at all. Oh, one of the two did have on a pair of shoes.

Informed sources have commented that this latest sport has filtered down from the north where it has been practiced for quite some time. If it catches on here our friendly campus cop should see quite a show come spring.

SLEEP ON THE SUNNY SAND

Though vacation is still many cold days away various groups are already dreaming of basking on some unsoaked beach. One jock though is doing more than dreaming. "Golden Arm" Gary Showers is showing more energy than he did in many seasons as an athlete and has taken steps to organize an economy trip to Daytona Beach.

The round trip excursion fare includes deluxe accommodations on the closest beach with a complimentary swing from a lamp post thrown in.

Some of the basic premises on which the trip was organized are ludicrous but for the 38 people who will get seats for the jaunt (space is going fast), the trip should prove broadening and will be one of the best experiences that any North Dakotan will suffer through.



Tanfield Miller

Placement Opportunities

Wed. & Thurs., Feb. 8 & 9 — Army Material Command offers math, chem. and eng. grads jobs at 30 different R. & D. Labs nationwide. Research and development of all weapons and equipment used by the army are involved.

Wed., Feb. 8 — International Harvester Co. offers econ., math. and eng. grads a wide variety of administrative, production and research assignments throughout the United States. Sales and service assignments are available in all corporate operations.

Detroit Civil Service offers a wide variety of professional positions with the City of Detroit. Starting salary for junior engineers is now \$8,200. Chem. grads are needed for analytical work with the dept. of water supply and many administrative assignments are open to liberal arts grads.

Thurs., Feb. 9 — Ling-Temco Vought Inc., Dallas, Tex., offers eng. assignments in aerodynamics, thermodynamics, acoustics, instrumentation, electromechanical systems, test, R. & D., etc. U. S. citizenship is required.

Kohler Co., Wis., needs mech., ind. and elec. engineers. Liberal arts and other interested students may apply for sales positions available in 16 branch offices.

Security First National Bank of Minneapolis, offers management training programs leading to assignments in branch operations, installment lending, branch examinations, trust operations, administration and examination control services. All interested students invited.

Fri., Feb. 10 — Northern States Power Co. offers openings to graduating elec., mech. and civil eng. students. Assignments include work on power plant facilities, substations and transmissions lines, field eng. and gas plant operations. Industrial sales openings are also available to interested students.

Atomic Energy Commission offers master degree candidates in econ. management positions in budgeting, contract administration. Engineers and scientists will be considered in reactor dev. & nuclear facilities construction.

Detroit Edison Co. will seek elec., mech. and arch. grads for production, design and sales positions with the

company. Project type summer assignments will also be available to undergraduate students in the above areas of study. All interested students are welcome to interview.

Mon. & Tues., Feb. 13 & 14 — Shell Oil Co. offers employment opportunities in ag. sales and technology in addition to petroleum exploration, production, refining and marketing. Primary interest will be shown to grads majoring in math., chem., eng. and ag. sciences.

Mon., Feb. 13 — Central Soya Co., Fort Wayne, Ind., seeks students interested in accounting, grain merchandising, plant engineering, production, credit and sales.

California State Personnel Board offers civ. eng. grads assignments involving design, planning and construction of freeways, bridges, dams, aqueducts and power plants. Eng. control the water supply and waste disposal in the area.

Agricultural Research Service offers a wide variety of research assignments at one of many federal research labs in various locations. Assignments are available for all ag. science majors including eng. ag. bio. and org. chem. grads are in primary demand by the service.

Oscar Bayer & Co., Madison, Wis., will interview for a wide variety of entry and training positions. Typical assignments include livestock buying, ind. eng., pre-management training

programs, mech. eng., food tech. and environmental control for chemists.

Tues. & Wed., Feb. 14 & 15 — U. S. Forest Service offers eng. assignments in the states of Mont., Id. or neighboring forest areas. Primary interest will be in visiting with ag., civ. and mech. eng. seniors. Summer employment will also be available for undergrad and grad students planning to return to school next fall.

Collins Radio with main plant facilities at Cedar Rapids, Iowa, will seek interviews with ind., elec. and mech. eng. grads at all degree levels. Computer application assignments are available for advanced degree candidates in research areas.

Tues., Feb. 14 — Jervis B. Webb Co., Detroit, Mich., design and manufacture ind. conveyor systems. The company offers employment to ind., civ., elec. and mech. eng. students, who are interested in the field of material handling systems. The company is heavily involved in the auto industry.

Wed., Feb. 15 — Hughes Aircraft Co. will offer summer employment to students 18 years of age or older. All interested students are requested to contact the Placement Office to arrange a personal interview. Students should also plan to attend one of the orientation sessions scheduled for 8 a.m. and 12 noon, February 15 in the Ballroom, Union.

For Progressive Student Government

Elect:

GREG KAPAUN

to Student Body

VICE - PRESIDENT

COUPON

SPECTRUM

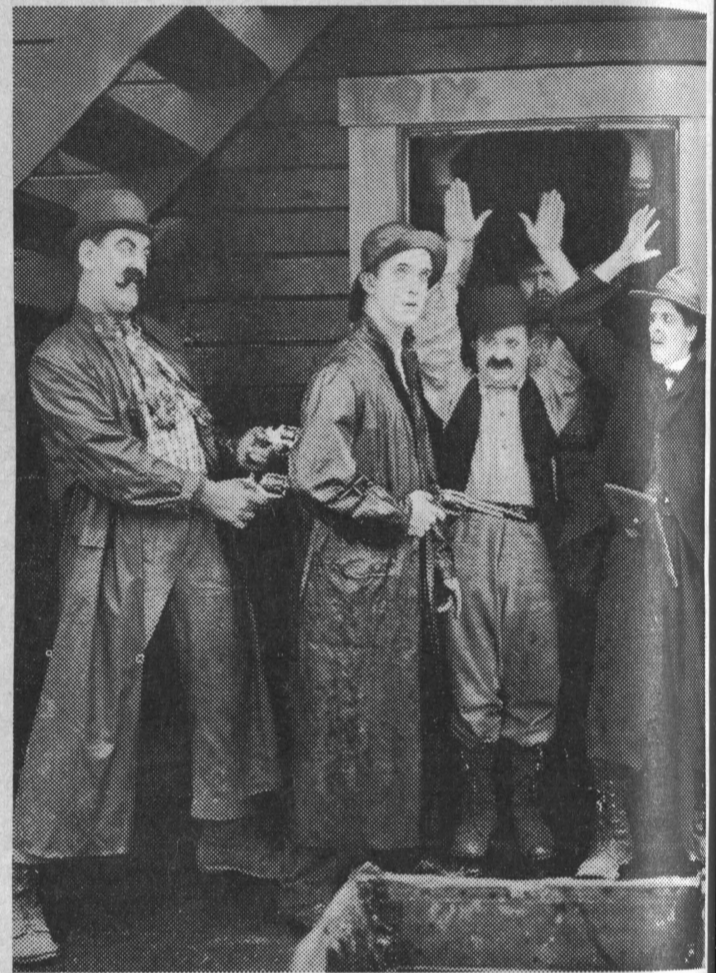
CLASSIFIED

AD SECTION

RATES: \$.05 per word

FOR SALE: Beet Machinery, 1 Gemco Beet Harvester, 1962 Model; 1 Farmhand Defoliator, 6 row (like new); 1 John Deere Beet Drill, Model 66-6 row; 3 Six-row Beet Cultivator; 1 C Farmall Tractor, 1950 Model; 1 Eberhams beet thinner mounted on B Farmall; 1 Marshallton weeder. Albert H. Ledebor, Raymond, Minnesota, Telephone 612-378-8730.

SLEEPING ROOM for rent, 1129 College Street, 235-7230.



When you can't afford to be dull

sharpen your wits with NoDoz

NoDoz keep alert tablets or new chewable mints, safe as coffee, help bring you back to your mental best . . . help you become more alert to the people and conditions around you. Non-habit forming.



Tablets or new Chewable Mints

DON'T FORGET YOUR QUARTER

That's how much you have coming back on the NoDoz you bought for the mid-year exams. Just mail us the front panel or label from any size package of NoDoz* with this coupon. And we'll mail you a quarter (25¢) in return. But hurry. Offer ends Feb. 28. No refunds after March 7, 1967. Mail coupon today!

Bristol-Myers/Grove Division, P.O. Box 4808, Clinton, Iowa 52732
*Enclosed is (check one): Wrapper from NoDoz Mints, or Front panel from package of 15 or 36 NoDoz Tablets, or Front label from bottle of 60 NoDoz Tablets.

Please return 25 cents (one quarter) to:

Name _____
Address _____
City _____ State _____ Zip Code _____

Offer void without this coupon.



VALENTINE SPECIAL

SEND AN ENLARGEMENT
5 x 7 BLACK & WHITE
ENLARGEMENT

Regular 49c. With this coupon 49c for first enlargement, only 29c for each additional from same negative.

631 N.P. Downtown **Epka** Northport Shopping Center

YOUR PHOTO HEADQUARTERS

COUPON

Editorial

Student Government Could Be Effective

Once student government has decided that it will never replace administration, it will choose its place on a continuum between working closely with or working independently of administration.

In the latter type, independent student committees, boards or commissions are set up. These either do very little, or else duplicate at a lower level, the functions of counterpart administrative or faculty committees.

The main student governing body finds that it is left with decisions concerning Bison heads, bus signs and awards to its own members. The strongest and most thoroughly researched proposals are simply written recommendations submitted to the bottom echelon of the higher government.

The student, administration and faculty committees should be combined. Students should be part of every University policy committee, minor or major.

This is the start of a less independent but more realistic and effective student government.

If students are to represent student opinion on major committees, there must be a central student government that actually reflects student opinion.

A senate elected at large has a remote chance of being representative. The possibilities of senators elected by individual interest groups were discussed when the student body constitution was rewritten last year. This idea should be further explored.

Such a representative central governing body is closer to the student and can best decide who will best represent the students on major University committees.

This type of government may never be able to point with pride at a line printed on University Drive and say look what we did by ourselves. But such things as better curriculum, smoother registration and fairer regulation result from better-informed policy making committees.

In the past many have expressed dissatisfaction with University student government. The way to improvement may be revision. A thorough study to change to more effective campus government is in order.

By supporting student government candidates who will wholeheartedly support this study, students can indicate their desire for better government. JVG



The Spectrum

(Oldest Student Organization On Campus)

EDITOR in CHIEF

Joe Satrom



EXECUTIVE EDITOR

Jim Glynn

News Editor

Sports Editor

Photographer

Cartoonist

Faculty Advisor

STAFF: Ted Jacob, Kathy Platt, Noel Jordan, John Schneider, Sandi Scheel, Roxanne Trieglaff, Linda Borud, Rosemary Neuman, JeAnne Mittelstedt, Marilyn Mathison, Cheryl Grangard, Rita Opp, Terry Hoesley, Jim Nelson, Mike Kihne, Roger Gendreau and Bruce Markusen.

The opinions stated in the *Spectrum* editorials are those of the editor and editorial board members and do not necessarily represent the opinion of the student body or administration of NDSU. The *Spectrum* is published every Wednesday during the school year except holidays, vacations and examination periods, at Fargo, N. D., by the NDSU Commission of Student Publications, State University Station, Fargo, N. D.

Second class postage is paid at Fargo, N. D. 58102.

Subscription rate \$1.00 per term.

Under contract with National Educational Advertising Service.

MANAGING EDITOR

Tanfield Miller

Glenn Solberg

Neil Thomas

Alan Cecil

B. K. Lilja

Larry Chambers

Writer Says Paper Has Been Editorializing In News Copy

To The Editor:

It is understandable that a student paper published on a quiet midwestern campus which rarely is able to boast a protest march should become involved in controversial issues outside of the campus sphere. If this is done, it should be done in a manner consistent with good journalism and should not seek to involve the University administration.

The *Spectrum*, in its recent articles on the Bond issue, has been negligent in that while purportedly serving the cause of "freedom of speech" has referred to "cor-

rupt politicians," attempted to involve the University President in a municipal affair and has failed to confine its editorial comments to the editorial section of the paper.

The statement inferring a "feud" between two professors appears to me to be indefensible, unless it results from a statement from one of the writer's limited sources: John Bond, Herschel Lashkowitz or A. E. Dahl.

M. T. Skodje

Civil Engineering

Department

Letters to the Editor . . .

On Dr. Bond Issue

Albrecht Clarifys University Policy

To The Editor:

You are aware that generally it is not the policy of this office to comment in any way on articles or editorials appearing in the *Spectrum*. Certain statements in an article concerned with Dr. John Bond's dismissal from the Fargo Civil Service Commission in the issue of Feb. 1, 1967, however, need clarification.

In the first place, I never denied receiving any correspondence requesting that the University or I take a stand on the issue — I wasn't asked whether such correspondence had been received. I interpreted the question as phrased by the reporter over the telephone, as asking whether contact had been made in recent days and if opposing sides were subjecting us to unusually urgent appeals. I don't feel they have.

The letter received from Mayor Herschel Lashkowitz, dated Dec. 9, 1966, was a request that we enter actively into the support of Dr. Bond's position. It did not call for an answer.

That, as the reporter quoted the Mayor, I have refused to, "even give the City Government the courtesy of a reply on a vital issue," is not pertinent since it is highly improbable that on this

issue, at least, the City Commission would have joined the Mayor in his appeal. Although the letter was typed on City of Fargo stationery, I accepted it as a personal request by Mr. Lashkowitz as a citizen.

Insofar as Mr. A. E. Dahl and KXGO are concerned, I have no way of knowing why he should have received a blind copy of the Mayor's letter. Someone from the station did call to ask for an explanation of the University's position in the case, but no direct appeal was made asking for action.

It is not surprising that Mr. Dahl would not have heard of any reply from the University since it would not have been considered necessary to supply him with a copy of any letter we might have sent the Mayor.

The reference to the physical education project in this instance seems wholly irrelevant. We will continue to go to the people of Fargo and of the State and to the Legislature, the Congress and the State Board of Higher Education whenever we need support for any project, be it the physical education building, increased research in agriculture, more facilities for home economics, a new

computer, classroom building or whatever else may be needed to enlarge and improve our educational services. How else would we grow?

I believe that those who know the true meaning of academic freedom and of freedom of speech will agree that the University's stand protects these principles and is to be preferred. Our position has given assurance to Dr. Bond and all others of the NDSU community that the University respects their right to their opinions and their right to express them.

There is implicit in our stand an encouragement to our people to participate as individuals in community affairs of all kinds — municipal, church, PTA, service clubs, chamber of commerce lodges, military organizations, etc.

The University reaffirms its belief that when its faculty, staff and students participate in off-campus affairs they do so freely as their conscience dictates, and unhampered by whatever University policies or philosophies upon issues may be.

The University's stand gives reassurance to all that its people will be judged solely upon their professional competence and records of performance in the classroom and the laboratory; the University will not equate a person's beliefs or actions, when within legal bounds, against professional performance.

It may be that some people are disappointed that the University has not become more visibly or vocally involved in this instance — but at the same time it has refused to be stampeded by a number of citizens who have demanded that in this case we take action contrary to our principles.

I have never once discussed any of these matters with Dr. Bond but I believe he would agree that we have chosen the course which most adequately guarantees academic freedom and freedom of speech. It is distinctly to his credit that throughout his trying experiences he has not himself involved the University and he has never asked this office for exceptions which would require that it set aside its principles and policies.

H. R. Albrecht, President
P.S. We do not believe any "pinkos" are harbored on this campus.

Student Senate Termed 'Chronic Problem' At SU

To The Editor:

North Dakota State University seems to have the chronic problem of something called student senators. I have heard of their existence ever since I came here, and I understand they existed even before I did.

I am still not sure as to just what they are, but from all that I have heard about them and all I have experienced in relation to them, I will give a definition of NDSU's own student senators.

First, student senators are a nuisance. This become obvious every year about this time, when a handful of unsuspecting students begin to plaster their names all over campus, in some of the most annoying places.

For instance, I walked drowsily into Festival Hall early one morning and was rudely awakened by a huge string of bright red letters placed across the auditorium reading "Fuglesten for SBP."

This annoyed me all through the class, as it hung so low that it partially obstructed my view of the projection screen from which the instructor was lecturing. (It was much like reading a book through a pair of eyeglasses upon which several four-year-olds had been playing tic-tac-toe.)

There is also a nice rope strung between two trees near Minard, just waiting to strangle the next tall person who fails to duck while he walks under it.

Now these physical aspects of our student senators are really quite impersonal, but in a few days there will be a flood of buttons pinned on mighty chests reading, "Gimblesprocket for SBP" or "I. M. Bennet for Student Senate," or some other such nonsensical statements.

The fellow conspirators of the candidates will, of course, high pressure you to vote for their candidate annoying you without mercy while they waste your valuable time.

Student senators are, secondly, great actors. They perch their bodies on small soapboxes in the

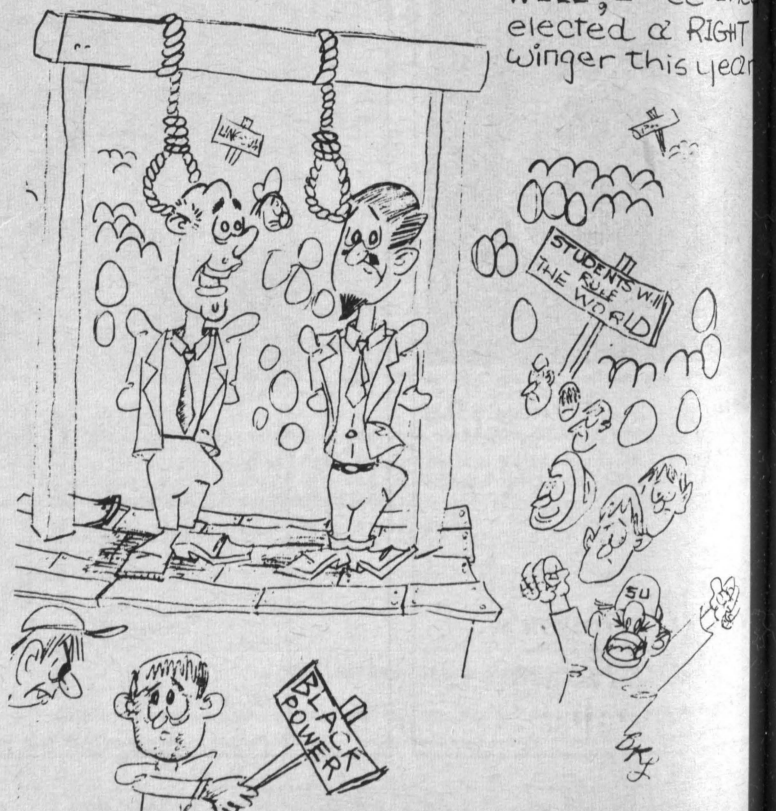
various dormitories, draw in mighty breaths and play Patrick Henry while their audiences decide whether to eliminate them or not.

Candidates make great promises and vow to set the school on its ear if they are elected, all the while maintaining a straight face as they strive to keep from bursting out laughing.

And finally, after all the votes are in, student senators are nothing. They go to their regularly scheduled nothings, held nowhere, anywhere, discuss nothing, submit nothing and vote for nothing.

So student senators then, might be defined as: "Students who make nuisances of themselves while acting like people they aren't, and who make nothing of themselves when they stop acting."

Ardell Faul AS 2





The Fine Arts Festival This Week

by Kathy Platt

The Fine Arts Festival offerings this week should please those with a classical bend as well as those who enjoy lighter entertainment.

RALLY

There is still rallying time to pick up a date and/or tickets for the LCT's performance of "Rally Round the Flag, Boys." The comedy opens a four-night stand tonight at 8:15 p.m. Tickets are available at the Little Country Theatre, Daveau's and the Union for \$1.

SYMPHONY

The 90-member Fargo-Moorhead Symphony, now in its 35th season of performance, will present a concert Sunday at 4 p.m. in Festival Hall under the direction of Sigvald Thompson. There is no charge for admission, but a free-will offering will be taken.

On the program is the overture to a Kabalevsky opera entitled "Colas Breugnon." The title is the name of a sixteenth century Burgundian gentleman who was the master of a large estate. The opera, seldom performed, is a collection of incidents from this man's life.

Mendelssohn's "Symphony No. 4 in A Minor" will also be performed. The piece is often referred to as the "Italian Symphony" as Mendelssohn wrote it to represent his impressions of a youthful journey to Italy.

Fine Arts Festival

Desire N'Kaoua, internationally known pianist, will be the featured guest artist in the symphony's final number. He will perform Maurice Ravel's "Concerto for Piano and Orchestra." (Ravel wrote only one other concerto for piano and that was written for

the left hand; composed for a promising pianist who lost one arm in a war.)

N'Kaoua, a native Algerian, has studied at the Conservatory of Algiers and at the National Conservatory in Paris. Among his awards are first prize in the Alfredo Casella Piano Competition and, in 1961, the first Grand prize at the Geneva International. Last year marked his American debut although he had been touring Europe since 1963.

Y. A. VALENTINES

"Be my Y. A. Valentine" is the slogan imprinted on red ribbons heralding the approach of the Young Americans' concert, appropriately scheduled the evening of February 14. The performance will be in Festival Hall at 8 p.m.

Billed as the group which sings "the sounds of the new music in America," the Young Americans sing folk, jazz and rock music and also draw on the musical

theatre for their repertoire. The combination of nine female and ten male voices began in the mind of a high school music teacher.

Achieving local success, they went on to T.V. appearances, followed by a 25-city tour with Johnny Mathis. Now a successful group in their own right, the Young Americans are on a nation-wide tour.



Senate Needs A Drummer!

Elect

BOB DuBORD

1 Year Senate



HALL - ALLEN

Shoe Sale

\$9 - \$13 - \$19 Values to \$34
Lined Winter Boots \$6 Values to \$15
Slippers \$4 Values to \$10

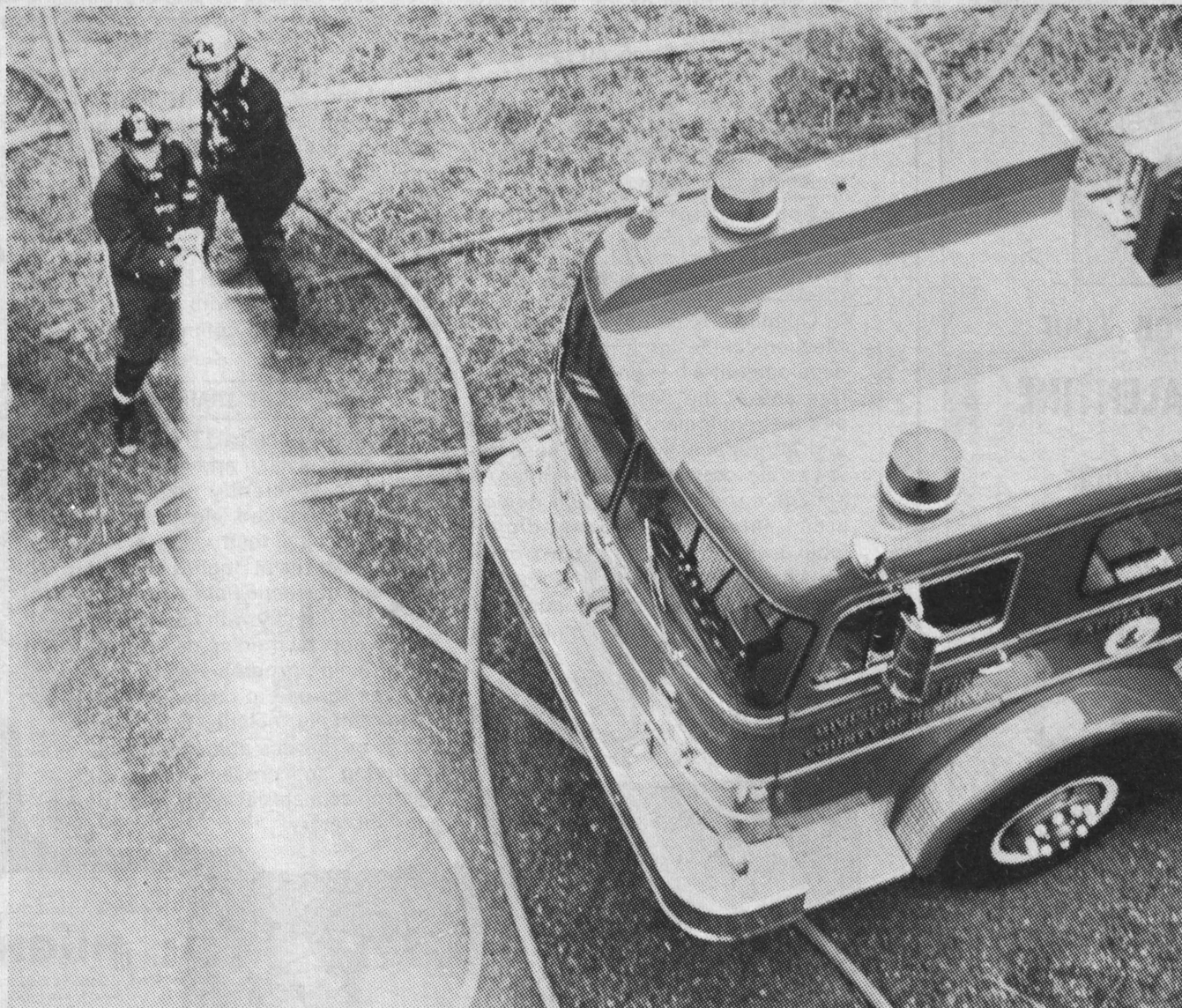
107 Broadway

Who says your only future at International Harvester will be in farm equipment?

This snorkel-equipped fire-fighter is only one of hundreds of different trucks made by International, world's largest producer of heavy-duty trucks. We're also a leader in construction equipment. Our farm equipment business is at an all-time high. We're an important steelmaker, too. We even make marine engines. And we're rapidly expanding our aerospace side.

When you choose a career with International Harvester, you choose a career in POWER. Providing mechanical power for everything from high-speed tractors to helicopters is our business. A two-billion-dollar-a-year business. Because our work at International Harvester is so diversified, we need not only engineers, but also graduates in accounting, business administration, liberal arts and the basic sciences. We offer an ideal combination of opportunity, responsibility and individual treatment. There's plenty of room for you to grow at IH.

Does this look like a plow?



International Harvester puts power in your hands

Interested? Contact your Placement Officer to see an IH representative when he visits your campus. Or write directly to Supervisor of College Relations, International Harvester, 401 North Michigan Avenue, Chicago, Illinois 60611.



AN EQUAL OPPORTUNITY EMPLOYER

DRS. MELICHER & PRESTON

Optometrists Telephone 232-8353
1st Ave. & Roberts Street
Fargo, North Dakota

Orange Blossom
DIAMOND RINGS



ATHENA FROM \$125

Royal
JEWELERS
FINE DIAMONDS FOR OCCASIONS

73 BROADWAY
FARGO, NORTH DAKOTA



CHECKING COMPUTER I/O this week is campus cutie Dianne Haarstick.

On The Social Scene ..

Pinnings

Kathy Seil (Heaton) to Curt Aljets (Co-op)
 Kathy Simonson (UND) to Lowell Kihle (SAE)
 Karen Sullivan (Jamestown) to Lee Kruger (SAE)
 Mary Ellen Quick (KD) to Russ Thurow (TKE)
 Penny Gregory (AS 3) to Larry Rysavy (TKE)
 Bonnie Glatt (AS 2) to Mark Giese (Hays, Kan.)

Beverly Dahl (St. Luke's) to Jerry Johnson (Sigma Nu)
 Becky Johnson (Fargo) to Dave Bendikson (SPD)
 Ginny Albrecht (GPB) to John Henderson (SAE)

Marriages

Mary Holton (Concordia) to John Craft (SAE)
 Karen Kerrigan (Halstad, Minn.) to Allan Nipstad (AGR)

Engagements

Diane Schlafmann (Turtle Lake) to Eugene Bossert (Co-op)
 Sandra Shipley (GPB) to Dave Kantrud (Theta Chi)
 Mary Judge (Chicago) to Dave Bernhauer (Kappa Psi)
 Peggy O'Leary (Fargo) to Pat Klein (Kappa Psi)
 Cheryl Wigtail (Concordia) to Clayton Reiger (TKE)
 Jane Bale (GPB) to Bruce Larson (SAE)

To Patch Up
 Student Government
 Get A

MASON

2 Year Senate

JOHN MASON



South: 235-7535

PIZZA
 Now Open

PIZZA
 at 11 A.M.

UNIVERSITY PIZZA

North: 232-2495

For A
Change
 elect
JOHN GARRAS
 to
 Two Year Senate

"CAROUSEL JEWELERS"



For Your
VALENTINE

Give her
 the Gift of Love

The cherished treasure of a lifetime — a symbolic gift of your love and so appropriate at this time of the year . . . from \$49.75.

Princess
 DIAMOND RINGS

REGISTERED FOR QUALITY - INSURED FOR SAFETY
 Low Monthly Payments Available

Special Terms For Students



Carousel Jewelers
 Card and Gift Shop
 NORTHPORT SHOPPING CENTER
 FARGO, NORTH DAKOTA

INTERESTED IN A REWARDING CAREER IN AEROSPACE/ELECTRONICS?

You can go forward, go fast, go far . . . at Hughes Field Service & Support Division.

If you are seeking a stimulating assignment where you can get in on the ground floor of the rapidly-expanding aerospace/electronics field, capitalize immediately on your background and training, and progress quickly toward your career goals—Hughes Field Service & Support Division in Southern California will welcome your inquiry.

Some of our current fields of interest include:

DESIGN ENGINEERING

Openings exist for Electrical and Mechanical Design Engineers in the development of Trainers & Simulators and in the design of checkout and test equipment for large missile and aerospace systems. These responsible positions require interest and/or experience in such design areas as: analog circuits, digital logic, switch/relay logic, electromechanical packaging, infrared testing, inertial guidance and Command/Control systems. Responsibilities will include all phases of development from concept to final fabrication and evaluation. B.S. degree is required in E.E., M.E. or Physics.

FIELD ENGINEERING

The Field Engineer's job ranges from complete contractor maintenance of electronic systems to technical assistance. His primary function is to help the customer become self-sufficient. Responsibilities include: providing maintenance, operational and technical assistance; formal and informal on-the-job training; logistic assistance and the investigation and solution of equipment problems experienced in the field. Domestic and overseas field assignments are available. Requirements include: B.S. degree in E.E. or Physics and experience with military fire control, radar or communications systems.

TECHNICAL TRAINING

Hughes Technical Training prepares both civilian and military personnel to efficiently operate and maintain advanced electronic systems. Technical Instructors conduct training classes at Hughes California sites and domestic field locations . . . and work directly with customers to evolve special training devices, plan field training programs and prepare courses for use at customer bases. Requirements include: B.S. degree in E.E. or Physics and experience in preparing and presenting technical electronics material in the classroom and laboratory.

ENGINEERING WRITING

Specialists in printed communications convert complex engineering data into simple, accurate, illustrated support publications, including technical manuals, orders, brochures, sales proposals, etc. Fields of interest include: digital computers, digital and voice communications systems . . . and many others. Requires a B.S. degree in E.E. or Physics.

CAMPUS INTERVIEWS

February 15

For additional information on the career opportunities available at Hughes Aircraft Company—and to make arrangements for a personal interview appointment with representatives of our Technical Staff, please contact your College Placement Office or write: Mr. B. P. Ramstack, Hughes Aircraft Company, P.O. Box 90515, Los Angeles, Calif. 90009.

HUGHES

HUGHES AIRCRAFT COMPANY
 FIELD SERVICE & SUPPORT DIV.

An equal opportunity employer
 U.S. citizenship required

SPRING QUARTER 1967

Pre-Registration Schedule

All Students in attendance Winter Quarter must register during the pre-registration period and pay fees in accordance with the payment schedule to avoid a \$15.00 late fee.

CRITICAL DATES AND LOCATIONS

- Pre-programming with Advisers - February 13-February 17 in Adviser's Offices.
- Obtain your own I.B.M. Master Card at the Prairie Room of the Memorial Union, according to the following schedule:

Seniors & Graduate Students	Monday	Feb.20-8:30a.m.-10:00a.m.	(A-L),	Monday	Feb.20-10:00a.m.-12Noon	(M-Z)
Juniors	Monday	Feb.20-1:30p.m.-3:00p.m.	(A-L),	Monday	Feb.20-3:00p.m.-4:30p.m.	(M-Z)
Sophomores	Tuesday	Feb.21-8:30a.m.-12Noon	(A-L),	Tuesday	Feb.21-1:30p.m.-4:30p.m.	(M-Z)
Freshmen	Wednesday	Feb.22-8:30a.m.-12Noon	(A-L),	Wednesday	Feb.22-1:30p.m.-4:30p.m.	(M-Z)

The Student's classification as of beginning of Winter Quarter will govern Master Card distribution and class cards will not be issued to any student who does not present his Master Card, along with an approved Trial Card, at the appropriate locations.

- Obtain I.B.M. Class Cards by presenting an approved Trial Schedule plus I.B.M. Master Card at the following locations beginning at 8:30a.m., Monday, February 20.

For all courses in English, Mathematics, Social and Behavioral Sciences, class cards will be distributed in the Ballroom of the Memorial Union.
For courses in all other Arts and Science departments, class cards will be distributed at the respective Departmental Offices.

For all courses in Agriculture, Engineering, and Pharmacy, class cards will be distributed in the respective Departmental Offices.

For all courses in Chemistry and Physics, the class cards will be distributed at the Dean's Office.

For all courses in Home Economics, the class cards will be distributed at the Founders Room of the Home Economics Building.

- After obtaining all Class Cards, students complete an official registration form, obtain advisor's signature, and present all registration materials to the Registrar's check-out tables in Crest Hall of the Memorial Union. The Registrar's Office will process registration from:

8:30a.m. to 12:00Noon and 1:00p.m. to 4:30p.m. on February 20, 21, 22, 23, 24.

Students must clear the Registrar's tables by 4:30p.m., February 24 to avoid a late fee charge. Students are urged to clear as early in the period as possible to take advantage of the lesser time then required because of shorter lines.

- Fees will be payable March 6,7,8 in Meinecke Lounge of the Memorial Union. Students will receive a fee payment schedule when they clear with the Registrar's Tables.
- Registration for new students as well as for returning students not in attendance Winter Quarter will take place in Departmental Offices on Friday afternoon, March 3 from 1:00-4:00p.m. The Registrar's Office will process these registrations during the same hours in Crest Hall of the Memorial Union.

Schedule of Classes

Department & Subject	Prerequisite	Cr.	Hour & Days	Instructor	Room
----------------------	--------------	-----	-------------	------------	------

COLLEGE OF AGRICULTURE

GENERAL AGRICULTURE

303 (Agric. Comm.)	Eng.103	3	11:30MW	L.Richardson	Min401
-Sec 1			2:30-5:20M		Min406
-Sec 2			2:30-5:20T		Min406
304 (Agric. Comm.)	GAg.303orComm.201	3	10:30TTh,2:30-5:20Th	Logan	Ceres TV
305 (Agric. Comm.)	GAg.303orComm.201	3	11:30TTh, 2:30-5:20W	G.Richardson	Ceres TV

AGRICULTURAL ECONOMICS

103 (Prin. Agric. Econ.)		3	4:30MTW	Staff	Mor308
203 (Prin. Agric. Econ.)	Ag. Ec. 103	5	10:30MWF,2:30TTh	Staff	Mor308
319 (Marketing-Cooperative)	Ag. Ec. 326	3	12:30MW,8:30F	Cobia	Mor308
320 (Farm Mgmt. Prin.)	Ag. Ec. 203	3	8:30MW,12:30Th	Olson	Mor308
326 (Prin. of Mktg. Farm Prod.)	Ag. Ec. 203	3	2:30MW,10:30F	Cobia	Mor210
332 (Intro. to Prices)	Ag. Ec. 203	3	10:30TTh,2:30F	Cox	Mor308
412 (Mktg. Lvstck. & Lvstck. Prod.)	Ag. Ec. 326	3	3:30MW,11:30F	Erlandson	Mor308
416 (Land Ownership & Tenancy)	Ag. Ec. 320	3	11:30MW,3:30Th	Ostenson	Mor215
424 (Agric. Adjustments)	Ag. Ec. 320	3	10:30MW,2:30Th	Olson	Mor210
440 (Agribus. Stds. in Lvstck. Mktg.)		3		Erlandson	Mor208
-Sec 1	Dept. appr.		7:30-11:20T+hr. arrgt.		Mor208
-Sec 2	Dept. appr.		7:30-11:20W+hr. arrgt.		Mor208
493 (Marketing-Prob. & Pract.)	Ag. Ec. 326	3	8:05-9:20MW	D. Anderson	Mor212
496 (Special Topics)	Ag. Ec. 320	4		Johnson	Mor215
-Sec 8 (Farm Appraisals)			9:30MW,1:30Th,1:30-4:20T		Mor215
497 (Research)	Dept. appr.	1-3	By arrgt.	Staff	Mor208
580 (Adv. Prod. Econ.)	Ag. Ec. 480	3	8:30TTh,12:30F	Olson	Mor212
596 (Special Topics)	Dept. appr.				
-Sec 5 (Res. Method)		1	By arrgt.	Hertsgaard	Mor216
-Sec 6 (Macro-Econ.)		3	7:30TWF	Hertsgaard	Mor215
-Sec 7 (Marketing)		3	1:30MW,9:30F	Staff	Mor212
597 (Research)	Dept. appr.	1-5	By arrgt.	Staff	Mor208
598 (Grad. Seminar)	Dept. appr.	1	1:30F	Taylor	Mor208
599 (Thesis & Research)	Dept. appr.		By arrgt.	Staff	Mor208

AGRICULTURAL EDUCATION

320 (Prin. Voc'l. Agric.)	Soph. Stg.	3	12:30MW,8:30F	Owen	Mor215
321 (Meth. Voc'l. Agric.)	Dept. appr.	3	8:30-10:20MTW	Owen	Mor103
402 (Meth. in Farm Mech.)	Dept. appr.	2	8:30-10:20ThF	Owen	Mor103
403 (Directed Teaching)	Dept. appr.	9	By arrgt.	Owen	Mor103
404 (Visual Aids in Tchg. Agric.)	appr.	2	1:30MW,1:30-3:20TTh	Owen	Mor103
487 (Prob. in Tchg. Voc'l. Agric.)	appr.	1-3	By arrgt.	Owen	Mor103
496 (Special Topics)	Dept. appr.	1-5	By arrgt.	Owen	Mor103

AGRICULTURAL ENGINEERING

112 (Farm Mechanics)		4	7:30TTh	Moilanen	AgE205
-Sec 1			2:30-5:20MW		AgE210,215
-Sec 2			2:30-5:20Th,9:30-12:20F		AgE210,215
214 (Conserv. Engr.)	Math.122	3	1:30MW,2:30-5:20Th	Holmen	AgE205,208
321 (Farmstead Conveniences)	Math.122	3	9:30MW,1:30Th	Butchbaker	AgE215
328 (Farm Engines)	Math.122	5	9:30TTh,1:30F,	Promersberger,	AgE201
			3:30-5:20MW	Kucera	AgE123
490 (Spec. Projects in AgEng.)	AgEd.Maj	1-5	By arrgt.	Staff	AgE104
496 (Special Topics)	Dept. appr.	1-5	By arrgt.	Staff	AgE104
497 (Research)	Dept. appr.	1-3	By arrgt.	Staff	AgE104
498 (Seminar)		1	1:30T	Holmen	AgE205
599 (Thesis & Research)	Grad. Stg.	1-3	By arrgt.	Staff	AgE104

AGRONOMY

103 (Introduction)		3	7:30TTh	Messersmith,	Mor308
-Sec 1			2:30-4:20Th	Lund	Wal247
-Sec 2			9:30-11:20F		Wal247
-Sec 3			12:30-2:20F		Wal247
202 (Grain Crops)	Agron.103,Bot.111	3	8:30TTh	Foster	Wal247
-Sec 1			2:30-4:20T		Wal247
-Sec 2			12:30-2:20W		Wal247
306 (Genetics) Bot. or Zool. 111, or Bio101		3	9:30TTh	Sandal	Mor210
-Sec 1			2:30-4:20W		Wal247
-Sec 2			12:30-2:20Th		Wal247
307 (Genetics Lab.)	Agron.306	1	By arrgt.	Sandal	Wal237
403 (Weed Cont. in Fld. Crops)	Ag202or301	3	7:30MW,4:30Th	Nalewaja	Wal221
416 (Crop Production)	Agron.202or301	3	9:30MW,1:30Th	Ebeltoft	Wal221
423 (Adv. Genetics I)	Agron.306	3	9:30TTh,1:30F	Frohberg,Busch	Wal221
490 (Rpts. in Crop Prod.)	Dept. appr.	2-5	By arrgt.	Staff	Wal202
496 (Special Topics)	Dept. appr.	1-5	By arrgt.	Staff	Wal202
497 (Research)	Dept. appr.	1-3	By arrgt.	Staff	Wal202
523 (Cytogenetics)	Agron.423	4	By arrgt.	Schooler	Wal239
532 (Adv. Breed. -Corn & For. Crops)	Ag407	3	11:30MW,3:30Th	Sandal	Wal221
596 (Special Topics)	Dept. appr.	1-5	By arrgt.	Staff	Wal202
597 (Research)	Dept. appr.	1-5	By arrgt.	Staff	Wal202
598 (Grad. Seminar)	Grad. Stg.	1	3:30F	Carter	Wal221
599 (Thesis & Research)	Grad. Stg.		By arrgt.	Staff	Wal202

ANIMAL SCIENCE

103 (Intro. Dairy Husb.)		3	7:30TThF	Ederly	Da27
105 (Intro. An. Husb.)		3	7:30MW	J. Johnson	Shep9
-Sec 1			1:30-4:20T		Shep32
-Sec 2			8:30-11:20F		Shep32
201 (Intro. Poul. Husb.)		3	8:30TTh,12:30F	Sell	VanEs301
202 (Breeds of Livestock)		3	11:30TTh	Light	Shep9
-Sec 1			1:30-4:20Th		Shep32
-Sec 2			1:30-4:20F		Shep32
204 (Dairy Process. Methods)	Dept. appr.	2	12:30T+Lab arrgt.	Beck	Da29
206 (Dairy Ctle, Brds, Jdg. & Show.)		2	8:30F,1:30-4:20F	Ederly	Da27,Shep32

Department & Subject	Prerequisite	Cr.	Hour & Days	Instructor	Room
----------------------	--------------	-----	-------------	------------	------

Animal Science-Continued

214 (Farm Meats)	Instr. appr.	3	2:30T,1:30-4:20MW	V. Johnson	Shep12,26
313 (Meats)		2	9:30-11:20TTh	V. Johnson	Shep9,26
315 (Sheep Prod.)	AnS.230or330	3	8:30TTh	Light	Shep9
-Sec 1			1:30-4:20W		Sheep Barn
-Sec 2			1:30-4:20Th		Sheep Barn
318 (Beef Production)	AnS.230or330	3	8:30MW	Knutson	Shep9
-Sec 1			1:30-4:20T		Beef Barn
-Sec 2			1:30-4:20W		Beef Barn
330 (Prin. An. Nutrition)	AnS105,Ch241	5	7:30MTWTh	Staff	Mor309
-Sec 1			8:30-10:20F		Shep12
-Sec 2			1:30-3:20F		Shep12
332 (Nutr. of Monogastric An.)	AnS.330	3	12:30MW,8:30F	Staff	Shep9
406 (Tech. Lvstck. Judging)	AS319orAppr.	2	1:30-4:20MW	J. Johnson	Barns
411 (Poultry Feeds & Feeding)	AnS.330	3	10:30TTh,2:30F	Sell	VanEs301
427 (Animal Breeding)	Agron.306	3	10:30MW,2:30Th	Haugse	Shep9
490 (Reports in An. Husb.)	Dept. appr.	2-5	By arrgt.	Staff	Wal306
496 (Special Topics)	Dept. appr.	1-3	By arrgt.	Staff	Wal306
498 (Seminar)	Dept. appr.	1	12:30T	Staff	Shep9
598 (Grad. Seminar)	Dept. appr.	1	9:30W	Staff	Wal306
599 (Thesis & Research)	Dept. appr.		By arrgt.	Staff	Wal306

BACTERIOLOGY

270 (General Bact.)		4	7:30TThF	Fulghum	AgE223
-Sec A			9:30-11:20M		Mor323
-Sec B			2:30-4:20M		Mor323
-Sec C			9:30-11:20W		Mor323
-Sec D			2:30-4:20W		Mor323
304 (Soil Microbiology)	Chem.242	4	10:30MW,	Funke	Mor309
			1:30-4:20MW		Mor322
422 (Pathogenic Bact.)	Bact.431	3-5	8:30MW,12:30Th, Doubly		Mor309
			1:30-4:20TTh		Mor323
496 (Special Topics)	Dept. appr.	1-3	By arrgt.	Staff	Mor319
497 (Research)	Dept. appr.	1-3	By arrgt.	Staff	Mor319
498 (Seminar)	Dept. appr.	1	By arrgt.	Doubly	Mor301
560 (Microbial & Molecular Gen.)	D. appr.	4	By arrgt.	Parsons	Mor319
596 (Special Topics)	Dept. appr.	1-3	By arrgt.	Staff	Mor319
597 (Research)	Dept. appr.	1-3	By arrgt.	Staff	Mor319
598 (Grad. Seminar)	Dept. appr.	1	By arrgt.	Doubly	Mor301
599 (Thesis & Research)	Dept. appr.	1-5	By arrgt.	Staff	Mor319

CEREAL TECHNOLOGY

547 (Adv. Cereal Chemistry)	CT441	3	10:30MW,2:30Th	Staff	Harris 203
597 (Research)	Dept. appr.	1-5	By arrgt.	Staff	Harris 106
598 (Grad. Seminar)	Grad. Stg.	1	4:30Th	Banasik	Harris 203
599 (Thesis & Research)	Grad. Stg.	1-5	By arrgt.	Staff	Harris 106

ENTOMOLOGY

201 (General Ent.)		4	11:30MW,3:30Th	Dogger	Mor210
-Sec A			2:30-5:20M	Staff	Mor107
-Sec B			2:30-5:20T	Staff	Mor107
313 (Systematic Ent.)	Ent.201	4	1:30MW,8:30-11:20W+ Post		Mor107
			3hrs. arrgt.		Mor107
496 (Special Topics-Neurophys.)	Appr.	3	By arrgt.	Cook	M&R Lab
497 (Research)	Dept. appr.	1-3	By arrgt.	Staff	Mor219
501 (Adv. Economic Ent.)	Grad. Stg.	4	By arrgt.	Callenbach	Mor104
503 (Insect Ecology)	Intro. Ecol.	3	10:30TTh,2:30F	Mulkern	Mor107
597 (Research)	Dept. appr.	1-3	By arrgt.	Staff	Mor219
599 (Thesis & Research)	Dept. appr.	3-9	By arrgt.	Staff	Mor219

HORTICULTURE

317 (Small Fruits)	Biol.101	3	1:30MW,9:30F	Lana	Mor309
496 (Special Topics)	496-Hort. Sec.-1	3		Hoag	AgE208
-Sec 2 (Landscpg. Sp. Purposes)			8:30-11:20MW		AgE208
497 (Research)	Dept. appr.	1-3	By arrgt.	Staff	Wal320
599 (Thesis & Research)	Grad. Stg.	1-5	By arrgt.	Staff	Wal320

PLANT PATHOLOGY

313 (Introductory)	Bot.112	4	8:30MW,	Huguelet	Wal315

Courses Listed By Colleges and By Departments Within

Department & Subject Prerequisite Cr. Hour & Days Instructor Room

COLLEGE OF ARTS AND SCIENCES

EDUCATION

215 (Educ. Psychology)	Psych.201	3	9:30MW, 1:30Th	Staff	Fest.Hall
301 (Found. of Educ.)	Educ.450	3	9:30MW, 1:30Th	Aarnes	Min219
303 (Hum. Growth&Dev.: Adoles.)	Educ.215	3	11:30Th	Flynn	Min319
-Sec A			1:30W+1hr. arrgt.		Min418
-Sec B			2:30W+1hr. arrgt.		Min418
-Sec C			2:30Th+1hr. arrgt.		Min300
-Sec D			3:30T+1hr. arrgt.		Min309
-Sec E			3:30W+1hr. arrgt.		Min300
318 (Sec. Sch. Methods) (With Educ.450)		3			
-Sec 1 (1st&last week of Qtr.)			9:00-11:30MTWThF	Anderson	Min331
			1:30-4:00MTWThF		Min331
-Sec 2 (Jr. in Ag.orHEC.)			5:30-8:00(p.m.)W	Whiting	Min314
321 (Introd. Tests&Meas.)	Educ.215	3	3:30-4:45MW	Eustice	Min319
326 (Meth. of Tchg. Instr. Music)	Mus.206	3	9:30MW, 1:30Th	Euren	Mus. Annex4
370 (Spec. Meth. Tchg. English)		3	11:30TTh+1hr. arrgt.	Webster	Min322
371 (Spec. Meth. in Tchg. Math.)	Jr. Stg.	3	1:30MW, 9:30F	Friese	Min208
375 (Meth. in Tchg. Men's PhyEd.)		2	By arrgt.	Staff	PEd
377 (Spec. Meth. in Tchg. Soc. Stds.)		3	3:30-4:45TTh	Eland	Min208
407 (Hist. of Educ. in the U.S.)		3	5:00-7:30(p.m.)	T Aarnes	Min310
412 (Educ. Sociology)		3	5:00-7:30(p.m.)	Th Eland	Min322
450 (Student Teaching)	Dept. appr.	9-12			
-Sec 1			By arrgt.	Staff	Min327
-Sec 2			By arrgt.	Kaiser	PEd
-Sec 3			By arrgt.	Gregoire	PEd
496 (Special Topics)					
-Sec 1 (Sch.&Comm. Relations)		3	5:00-7:30(p.m.)	M Anderson	Min322
-Sec 2 (A-V Educ.)	With 450	1	By arrgt.	Biggs	Min331
537 (Elem. School Supervision)		3	7:30-10:00(p.m.)	Th Staff	Min310
540 (Adv. Counseling Theory)	Educ.423, 440,443	3	5:00-7:30(p.m.)	Th Teigland	Min331
544 (Org.&Admin. of Pers. Services)		3	5:30-8:00(p.m.)	W Flynn	Min322
545 (Counseling Practicum)	Dept. appr.	1-5	By arrgt.	Teigland	Min331
598 (Seminar)	Dept. appr.	3			
-Sec 1			7:30-10:00(p.m.)	M Anderson	Min322
-Sec 2			By arrgt.	Teigland	Min331
-Sec 3			8:00-10:30(p.m.)	W Flynn	Min322
599 (Thesis & Research)	Dept. appr.	8-15	By arrgt.	Staff	Min327

ENGLISH

101 (Freshman English)	Foreign Stds.	3	4:30-5:45MW	Oldknow	Min310
102 (Freshman English)	Eng.101	3			
-Sec 1			2:30MW, 10:30F	Schoff	Min310
-Sec 2			10:30TTh, 2:30F	Schoff	Min310
-Sec 3			10:30MW, 2:30Th	Schlipf	Min205
-Sec 4			9:30TTh, 1:30F	Schlipf	Min322
-Sec 5			9:30MW, 1:30Th	Schlipf	Min208
103 (Freshman English)	Eng.102	3			
-Sec 1			7:30MW	Orvik	Min205
-Sec 2			7:30MW	Jury	SE31
-Sec 3			7:30TThF	Winkelman	SE106
-Sec 4			8:30MW, 12:30Th	Orvik	Min205
-Sec 5			8:30MW, 12:30Th	Jury	SE31
-Sec 6			8:30MW, 12:30Th	Peet	Lib105
-Sec 7			8:30MW, 12:30Th	E. McGrath	Min401
-Sec 8			8:30MW, 12:30Th	Olson	SE35
-Sec 9			8:30TTh, 12:30F	Winkelman	SE106
-Sec 10			8:30TTh, 12:30F	Cabral	Lib105
-Sec 11			8:30TTh, 12:30F	Wallum	Min310
-Sec 12			8:30TTh, 12:30F	Staff	SE33
-Sec 13			8:30TTh, 12:30F	Voldal	SE34
-Sec 14			9:30MW, 1:30Th	Sackett	Min310
-Sec 15			9:30MW, 1:30Th	T. McGrath	Lib101
-Sec 16			9:30MW, 1:30Th	Beeching	SE32
-Sec 17			9:30MW, 1:30Th	Peet	Lib105
-Sec 18			9:30MW, 1:30Th	Holmquist	Min314
-Sec 19			9:30TTh, 1:30F	Lyons	Min401
-Sec 20			9:30TTh, 1:30F	Sackett	Min208
-Sec 21			9:30TTh, 1:30F	Staff	SE33
-Sec 22			9:30TTh, 1:30F	Cabral	Lib105
-Sec 23			10:30MW, 2:30Th	E. McGrath	SE104
-Sec 24			10:30MW, 2:30Th	Forsythe	SE34
-Sec 25			10:30MW, 2:30Th	Olson	SE35
-Sec 26			10:30MW, 2:30Th	Peet	Lib105
-Sec 27			10:30MW, 2:30Th	Wallum	Min310
-Sec 28			10:30MW, 2:30Th	Henriksen	SE33
-Sec 29			10:30TTh, 2:30F	Lyons	Min401
-Sec 30			10:30TTh, 2:30F	Voldal	SE33
-Sec 31			10:30TTh, 2:30F	Schlipf	Min205
-Sec 32			11:30MW, 3:30Th	Peet	Lib105
-Sec 33			11:30MW, 3:30Th	Henriksen	SE33
-Sec 34			12:30MW, 8:30F	Redman	SE31
-Sec 35			12:30MW, 8:30F	Forsythe	SE34
-Sec 36			1:30MW, 9:30F	Engel	Min322
-Sec 37			1:30MW, 9:30F	Farnham	SE32
-Sec 38			1:30MW, 9:30F	Hoverman	Lib105
-Sec 39			1:30MW, 9:30F	Redman	SE31
-Sec 40			1:30MW, 9:30F	Johnson	SE106
-Sec 41			2:30MW, 10:30F	Lyons	Min401
-Sec 42			2:30MW, 10:30F	Perkins	SE106
-Sec 43			2:30MW, 10:30F	Farnham	SE33
-Sec 44			2:30MW, 10:30F	Hoverman	Lib101
-Sec 45			2:30MW, 10:30F	Cabral	Lib105
-Sec 46			3:30MW, 11:30F	Johnson	SE104
-Sec 47			3:30MW, 11:30F	Cabral	Lib105
-Sec 48			3:30MW, 11:30F	Perkins	SE106
211 (Survey of English Lit.)		3	10:30TTh, 2:30F	Sackett	Min219
228 (Survey of American Lit.)		3	2:30MW, 10:30F	Hove	Min219
257 (World Literature)		3	11:30MW, 3:30Th	T. McGrath	SE32
300 (Humanities-Age of Enlightenment)		3	7:30-10:00(p.m.)	Th Holmquist	Min219
310 (Victorian Poetry)		3	1:30MW, 9:30F	Lyons	Min401
321 (20th Cent. American Novel)		3	7:30-10:00(p.m.)	W Engel	Min219
324 (Mod. Des. Grammar)		3	10:30TTh, 2:30F	Hove	Min301
332 (Mod. British&Irish Drama)		3	9:30TTh, 1:30F	Schoff	Min301
351 (Adv. English Composition)		3			
-Sec 1			9:30MW, 1:30Th		Min418
-Sec 2			9:30TTh, 1:30F		Min418
353 (Adv. Eng. Composition-Narr.&Des.)		3	8:30MW, 12:30Th	T. McGrath	Lib101
360 (Business Letters)		3			
-Sec 1			8:30MW, 12:30Th		SE36
-Sec 2			9:30TTh, 1:30F		SE106
370 (Spec. Meth. Tchg. English)		3	11:30TTh+1hr. arrgt.	Webster	Min322
408 (Milton)		3	7:30-10:00(p.m.)	Th Cater	Min322
410 (Rest. & 18th Cent. Drama)		3	1:30MW, 9:30F	Schoff	Min301
441 (Victorian Prose Writers)		3	10:30MW, 2:30Th	Sackett	Min304
476 (Non-dramatic Lit.-17th Cent.)		3	8:30TTh, 12:30F	Beeching	Min314
496 (Special Topics)					
-Sec 1 (Middle English Lit.)		3	2:30MW, 10:30F	Oldknow	Min322
-Sec 2 (Persp. on the Nat. of Man)		3	10:30MW, 2:30Th	Cater	Min401
-Sec 3 (Semantics)		3	7:30-10:00(p.m.)	T Oldknow	Min322
-Sec 4 (Spenser)		3	8:30MW, 12:30Th	Beeching	SE32
-Sec 5 (Phonetics)		3	9:30TTh, 1:30F	Oldknow	Min310
-Sec 6 (Humanities-Age of Enlight.)		3	7:30-10:00(p.m.)	Th Holmquist	Min219
596 (Special Topics)					
-Sec 1 (World Literature)		3	11:30MW, 3:30Th+arrgt.	T. McGrath	SE32
-Sec 2 (American Novel)		3	1:30-4:00T	Engel	Min310
-Sec 3 (Stds. in Lit. Scholarship)		3	9:30MW, 1:30Th	Cater	Min401

LIBRARY SCIENCE

121 (Library Usage)		1		Staff	Lib101
-Sec 1			8:30T		
-Sec 2			9:30T		
-Sec 3			10:30T		
-Sec 4			2:30T		
-Sec 5			8:30Th		
-Sec 6			9:30Th		
-Sec 7			10:30Th		
-Sec 8			2:30Th		
-Sec 9			11:30Th		
-Sec 10			9:30F		
306 (Book Selection)	LS121, Jr.	3	By arrgt.	Stallings	Lib236
307 (Reference)	Jr.	3	By arrgt.	Stallings	Lib236
310 (Practice Work-Research Tools)		3	By arrgt.	Stallings	Lib236

Department & Subject Prerequisite Cr. Hour & Days Instructor Room

MATHEMATICS

109 (College Algebra)	H.S. Alg.	5	9:30TTh, 1:30MW	Staff	SE104
111 (Plane Trig.)	Coll. Alg.	4		Staff	
-Sec 1			8:30MW, 12:30TTh		SE34
-Sec 2			9:30TTh, 1:30MW		SE34
-Sec 3			11:30MW, 3:30TTh		Min302
116 (Slide Rule)	Logarithms	1		Staff	
-Sec 1			7:30M		Min305
-Sec 2			8:30F		Min305
-Sec 3			9:30Th		Min305
-Sec 4			11:30F		Min305
120 (College Algebra)	H.S. Alg.	3	7:30TThF	Staff	Min322
121 (College Algebra)	Math.120	3		Staff	
-Sec 1			7:30TThF		SE104
-Sec 2			7:30TThF		SE34
-Sec 3			2:30MW, 10:30F		SE104
122 (Plane Trig.)	Math.121	3		Staff	
-Sec 1 (Pharm., etc.)			10:30TTh, 2:30F		Sud37
-Sec 2 (Pharm., etc.)			2:30MW, 10:30F		Sud224
-Sec 3			2:30MW, 10:30F		SE34
-Sec 4			10:30TTh, 2:30F		SE34
-Sec 5 (Pharm., etc.)			7:30TThF		Sud224
-Sec 6			7:30TThF		Min305
-Sec 7			7:30TThF		SE33
-Sec 8			9:30MW, 1:30Th		Min322
-Sec 9			9:30MW, 1:30Th		Min305
-Sec 10			11:30MW, 3:30Th		Min309
-Sec 11			7:30-10:00(p.m.)	T	Min208
126 (Analytic Geometry)	Alg.&Trig	4		Staff	
-Sec 1			7:30MTWTh		Min310
-Sec 2			8:30MW, 12:30TTh		SE33
-Sec 3			8:30MW, 12:30TTh		SE104
-Sec 4			9:30MW, 1:30Th		SE106
-Sec 5			10:30TTh, 2:30MW		Min302
-Sec 6			11:30MW, 3:30TTh		Min202
150 (Intr. Anal. Geom.&Calc.)	Math.125	5		Staff	
-Sec 1			7:30MTWThF		Min302
-Sec 2			8:30MW, 12:30TTh		SE106
201 (Diff.&Int. Calculus)	Anal. Geom.	5		Staff	
-Sec 1			8:30MW, 12:30TTh		AgE205
-Sec 2			9:30MW, 1:30TTh		Min309
202 (Diff.&Int. Calculus)	Math.201	5		Staff	
-Sec 1			8:30MW, 12:30TTh		Min310
-Sec 2			9:30MW, 1:30TTh		SE33
205 (Descriptive Astronomy)		4		Staff	
-Sec 1			7:30MTWTh		Min301
-Sec 2			8:30MW, 12:30TTh		Min305
-Sec 3			8:30TTh, 12:30MW		Min305
-Sec 4			9:30TTh, 1:30MW		Min302
-Sec 5			11:30MW, 3:30TTh		Min305
219 (Math. of Investment)	Coll. Alg.	4		Staff	
-Sec 1			7:30MTWTh		Min202
-Sec 2			8:30TTh, 12:30MF		Min205
-Sec 3			8:30MW, 12:30TTh		Min202
235 (Spherical Trig.)	Plane Trig.	2	10:30MW	Staff	Min208
250 (Calc. & Anal. Geom.)	Math150orEquiv.	5		Staff	</

Courses Listed By Colleges and By Departments Within

Department & Subject	Prerequisite	Cr.	Hour & Days	Instructor	Room
MUSIC					
110(Fund. of Music)		2	2:30MW	Johnson	Putn12
111(Introd. to Music Lit.)		3	12:30MW, 8:30F	VanVlissingen	Fest.Hall
113(Operatic Lit.)	Mus.111	3	8:30TH, 12:30F	D.Ledet	Putn6
121, 122, 123(Elem.Piano)	Dept.appr.	2	By arrgt. Croal, Koenig	Putn17, 16	
131, 132, 133(Elem.Voice)	Dept.appr.	2	By arrgt. Godwin, M.Ledet	Putn10, 4	
141, 142, 143(Elem.Strings&Winds)	Dept.appr.	2	By arrgt. Euren, Johnson, D.Ledet	Mus.Annex4	Putn3, 1
206(Theory I)	Mus.205	3	1:30MW, 9:30TH	Koenig	Putn6
221, 222, 223(Intermed.Piano)	Dpt.appr.	2	By arrgt. Croal, Koenig	Putn17, 16	
231, 232, 233(Intermed.Voice)	Dpt.appr.	2	By arrgt. Godwin, M.Ledet	Putn10, 4	
241, 242, 243(Intermed.Stgs.&Winds)		2	By arrgt. Euren, Johnson, D.Ledet	Mus.Annex4	Putn3, 1
306(History of Music)	Mus.305	2	1:30MW	Johnson	Putn12
309(Theory II)	Mus.308	4	10:30MW, 2:30TH	Johnson	Putn12
310(Instrumental Conducting)	Mus.325	2	10:30TH	Euren	Mus.Annex4
321, 322, 323(Adv.Piano)	Dept.appr.	2	By arrgt. Croal, Koenig	Putn17, 16	
326(Meth.ofTchg.Instr.Music)	Mus.206	3	9:30MW, 1:30TH	Euren	Mus.Annex4
331, 332, 333(Adv.Voice)	Dept.appr.	2	By arrgt. Godwin, M.Ledet	Putn10, 4	
341, 342, 343(Adv.Strings&Winds)	appr.	2	By arrgt. Euren, Johnson, D.Ledet	Mus.Annex4	Putn3, 1
374(Music Admin.&Org.)	Mus.206, 113	2	2:30MW	Euren	Mus.Annex4
407(Cont.Harmonic Tech.)	Mus.309r	3	By arrgt. Johnson	Putn12	
434(Choral Conducting)	Dept.appr.	2	By arrgt. Godwin	Putn6	
496(Special Topics)					
-Sec 1 (Esthetics)		3	2:30MW, 10:30F	Hertel	Min300
152, 252, 352, 452(Women's Glee Club)		1	12:30TH	M.Ledet	Putn6
152, 252, 352, 452(Men's Glee Club)	appr	1	11:30MW	Godwin	Putn6
152, 252, 352, 452(Choir)	Dept.appr.	1	4:30MTWTh	Godwin	Putn6
152, 252, 352, 452(Oratorio)	Dept.appr.	1	7:30-9:30(p.m.)	W Godwin	Putn6
162, 262, 362, 462(Band)	Dept.appr.	1	4:30MTWTh, 12:30F	Euren	Mus.Annex4
162, 262, 362, 462(Orchestra)	Dept.appr.	1	3:30MW+1hr.arrgt.	D.Ledet	Putn6
NATURAL SCIENCES					
BIOLOGY					
102(General Biology)	Biol.101	4		Staff	Min319
-Sec A			9:30MW, 1:30TH		Min319
-Sec B			9:30TH, 1:30F		Min319
-Sec 1			8:30-10:20M		Min102
-Sec 2			10:30-12:20M		Min102
-Sec 3			12:30-2:20M		Min102
-Sec 4			2:30-4:20M		Min102
-Sec 5			8:30-10:20T		Min102
-Sec 6			10:30-12:20T		Min102
-Sec 7			12:30-2:20T		Min102
-Sec 8			2:30-4:20T		Min102
-Sec 9			8:30-10:20W		Min102
-Sec 10			10:30-12:20W		Min102
BOTANY					
112(General Botany)	Biol.102	4	11:30MW, 3:30TH	Burgess	Min219
-Sec 1			8:30-10:20ThF	Staff	Min102
-Sec 2			1:30-3:20ThF	Staff	Min102
214(Systematic Botany)	Biol.102	4	By arrgt. Harms	MinAnn4	
302(Plant Physiology)	Bot.301	4	8:30TH, 1:30-4:20TH	Duysen	Min123
323(Range Mgmt.&Improvement)	Bot.304, 316r	4	By arrgt. Whitman	MinAnn4	
404(Adv.Plant Ecology)	Bot.304orAppr.	3	By arrgt. Burgess	MinAnn4	
439(Physiology of Fungi)	Bot.302orAppr.	3	By arrgt. Hayat	Wal137	
441(Cell Ultrastructure)	12hrs.Bot.or Zool.orAppr.	3	By arrgt. Hayat	Min111	
496(Special Topics)	Dept.appr.	1-3	By arrgt. Staff	Min117	
497(Research)	Dept.appr.	1-3	By arrgt. Staff	Min117	
498(Seminar-Res.Rpts.)	Dept.appr.	1	By arrgt. Staff	Min101	
596(Special Topics)	Dept.appr.	1-3	By arrgt. Staff	Min117	
597(Research)	Dept.appr.	1-3	By arrgt. Staff	Min117	
598(Seminar-Res.Rpts.)	Dept.appr.	1	By arrgt. Staff	Min101	
599(Thesis & Research)	Dept.appr.	1-5	By arrgt. Staff	Min117	
GEOGRAPHY					
101(Introductory)		3	1:30MW, 9:30F	Kress	Min319
312(Geog.of the Upper Midwest)	Appr.	3	10:30MW, 2:30TH	Kress	Min314
496(Spec.Topics-Adv.Settl.Geog.)	Appr	3	4:30-5:45TH	Kress	Min300
497(Research)	Dept.appr.	1-3	By arrgt. Kress	Min103A	
GEOLOGY					
104(Physical Geology)		5	1:30MTW, 9:30F	Brophy	Min219
-Sec A			2:30-5:20T	Staff	Min101
-Sec B			1:30-4:20F	Staff	Min101
305(Mineralogy II)	Geol.304	4	8:30MW, 1:30-3:20MW	Metzger	Min101
350(Glacial Geology)	Physical Geol.	3	10:30MW, 2:30TH	Brophy	Min101
ZOOLOGY					
204(Elem.Ornithology)	Biol.102	3	7:30T, 8:30-9:20T, 7:30-9:20Th+3hrs.arrgt.	Cassel	Min101
303(Vert. Histology)	Zool.Majors	4	12:30MW, 8:30F, Hayes	Min101	
305(Comp.Vert.Anat.)	Zool.113or304	4	2:30-4:20MW	Min123	
317(Invert.Zoology)	Zool.316orappr.	4	8:30MW, 12:30TH, Sokol	Min125	
363(Mammalian Physiology)	Zool.362or Dept.appr.	4	2:30-5:20TH	Min104	
422(Wildlife Conserv.Prin.)	Dpt.appr.	3	9:30MW, 1:30TH, Comita	Min125	
462(Endocrinology)	Chem.242 or appr.	4	10:30MW, 2:30TH	Jacobsen	Min125
496(Special Topics)					
-Sec 1 (Prin.of Systematics)		3	By arrgt. Cassel	Min101	
-Sec 2 (Fisheries Tech.)	Dpt.appr	4	10:30TH+arrgt. Peterka	Min125, 104	
-Sec 3 (Histology)	(Med.Tech.) Biol.102	3	12:30MW, 8:30F	Hayes	Min101
-Sec 4	Dept.appr.	1-3	By arrgt. Staff	Min117	
497(Research)	Dept.appr.	1-3	By arrgt. Staff	Min117	
498(Seminar)JrStg.-crd.only to Sen.		1	11:30TH	Staff	Min104
596(Special Topics)	Dept.appr.	1-5	By arrgt. Staff	Min117	
597(Research)	Dept.appr.	1-5	By arrgt. Staff	Min117	
598(Seminar)	Grad.Stg.	1	11:30F	Staff	Min104
599(Thesis & Research)	Grad.Prog.appr		By arrgt. Staff	Min117	
PHILOSOPHY					
201(Symbolic Logic)		5	11:30MWF, 3:30TH	Brkie	Min301
301(Introd.to Phil.Analysis)		3	10:30MW, 2:30TH	Brkie	Fest.Hall
302(Introd.to Philosophy)	Phil.301	3	2:30MW, 10:30F	Brkie	Min305
312(Hist.of Mod.Phil.)	Phil301orAppr.	3	9:30MW, 1:30TH	Roach	Rel.Ed.Aud.
313(Hist.of Contemp.Philosophy)		3	2:30MW, 10:30F	Roach	Rel.Ed.Aud.
496(Special Topics)					
-Sec 1 (Esthetics)		3	2:30MW, 10:30F	Hertel	Min300
-Sec 2 (Persp. on the Nat.ofMan)		3	10:30MW, 2:30TH	Cater	Min401
PHYSICAL EDUCATION-MEN					
103(Spring Activities)		1		Staff	Ped.Floor
-Sec 1			7:30MW		
-Sec 2			8:30MW		
-Sec 3			3:30MW		
-Sec 4			7:30TH		
-Sec 5			3:30TH		
104(Golf)	Ped Majors&Minors	1	8:30TH	Staff	Ped.Floor
116(Personal Health)		1	8:30TH, 12:30F	Belk	Ped.204
119(Bowling)		3	10:30MW	Staff	Stu.Union
204(Tennis)	Ped Majors&Minors	1	3:30MTWTh	Maughan	FH& Starting 4-12-67
206(Baseball)	Frosh.&Varsity	1	4:30MTWThF	Kjelbertson	FH
210(Track)	Varsity&Frosh.	1	4:30MTWThF	Staff	Stadium
230(Athletic Injuries)	Majors&Minors	3	10:30MW, 2:30TH	Isrow	Ped.112, Stadium
303(Meth.&Tech.of Off. Spr.Sports)		1	By arrgt. Kjelbertson	Ped.204	
310(Introd.to Safety Education)		3	9:30MW, 1:30TH	Staff	Ped.204
323(Meth.in Coach.Track)		2	2:30TH	Staff	Ped.112
325(Meth.in Coach.Baseball)		2	11:30MW	Kjelbertson	Ped.204
375(Meth.inTchg.Men'sPhyEd.)		2	By arrgt. Staff	Ped	
401(Hist.&Phil.of Ped.)	Sr.Stg.	3	10:30MW, 2:30TH	Erhardt	Ped.204
402(Org.&Admin.of Ped.)	Jr.Stg.	3	8:30MW, 12:30TH	Koppenhaver	Ped.112
403(Rec.&Intramural Activities)	PE318	2	11:30TH	Kaiser	Ped.Floor
405(Mechanics of Movement)	PE309	3	9:30MW, 1:30TH	Cowman	Ped.112
406(Life Saving)	PE305	2	6:15(p.m.)	T Manley	Fargo H.S.
410(Teaching Traffic Safety)	PE310	3	7:30MWF	Kaiser	Ped.204
411(Driver&Safety Educ.II)		3	8:30MW, 12:30TH	Kaiser	Ped.204
496(Special Topic in Ped)	Sr.Stg.	1-3	By arrgt. Koppenhaver		FH

Department & Subject	Prerequisite	Cr.	Hour & Days	Instructor	Room
PHYSICAL EDUCATION-WOMEN					
102(Fund. in Rhythms)		1			Ped.Stage
-Sec 1			8:30MW	Nass	
-Sec 2			9:30MW	Nass	
-Sec 3			10:30MW	Hegstad	
-Sec 4			11:30MW	Hegstad	
-Sec 5			12:30MW	Nass	
-Sec 6			1:30MW	Nass	
-Sec 7			2:30MW	Hegstad	
-Sec 8			10:30TH	Hegstad	
-Sec 9			11:30TH	Hegstad	
-Sec 10			12:30TH	Nass	
-Sec 11			1:30TH	Hegstad	
-Sec 12			2:30TH	Hegstad	
105(Beg. Swimming)	Soph.Stg.	1	3:45-5:15W	Gordon	H.S.Pool
116(Personal Health)		3	8:30TH, 12:30F	Belk	Ped.204
121(Volleyball)		1		Folstad	
-Sec 1			1:30MW		Ped.Floor
-Sec 2 (1st 5 weeks of Quarter)			2:30MTWTh		Ped.Floor
Majors Only					
123(Softball)		1	11:30MW	Folstad	Ped.Floor
130(Track&Field) (2nd 5wks. of Qtr.)		1	2:30MTWTh	Folstad	Ped.Floor
208(Golf)	Soph.Stg.	1		Raer	
-Sec 1			9:30MW		Ped.Floor
-Sec 2			10:30MW		Ped.Floor
-Sec 3			9:30TH		Ped.Floor
-Sec 4			10:30TH		Ped.Floor
209(Tennis)	Soph.Stg.	1		Raer	
-Sec 1			12:30MW		Ped.Floor
-Sec 2			12:30TH		Ped.Floor
-Sec 3			1:30TH		Ped.Floor
310(Camp Leadership)	Soph.Stg.	3	1:30MW, 2:30-5:20T	Gregoire	Ped.112 Pool
320(Tchg. of Modern Dance)	InstrAppr.	1	9:30TH	Nass	Ped.Stage
325(Tchg. of Rhythms)	Ped.220, 224	2	8:30TH, 12:30F	Nass	Ped.112, Stage
340(Adv. Swimming)	Instr.Appr.	1	7:45-9:15(p.m.)	W Gordon	H.S.Pool
401(Hist.&Phil.of Ped.)	Sr.Stg.	3	10:30MW, 2:30TH	Erhardt	Ped.204
402(Org.&Admin.of Ped.)	Sr.Stg.	3	8:30MW, 12:30TH	Koppenhaver	Ped.112
405(Mech. of Movement)	Ped.309	3	9:30MW, 1:30TH	Cowman	Ped.112
496(Special Topic in Ped.)	Sr.Stg.	1-3	By arrgt. Gregoire		Ped.106B
RELIGION					
257(Teachings of Jesus)		2	3:30MW	Roach	Rel.Ed.Aud.
259(Bible Background)		2	7:30-9:30(p.m.)	T Roach	Rel.Ed.Aud.
273(Catholic Doctrine I)		2	12:30TH	Matchie	Rel.Ed.Aud.
275(Catholic Doctrine III)		2	1:30MW	Matchie	Rel.Ed.Aud.
277(Protestant Ethics)		2	9:30TH	Kvinge	Rel.Ed.Aud.
301(Judaism)		2	1:30-3:20T	Benjamin	Rel.Ed.Aud.
303(Comparative Religion)		3	8:30TH, 12:30F	Roach	Rel.Ed.Aud.
312(Hist. of Mod.Phil.)		3	9:30MW, 1:30TH	Roach	Rel.Ed.Aud.
313(Hist. of Contemp.Philosophy)		3	2:30MW, 10:30F	Roach	Rel.Ed.Aud.
401(Sociology of Religion)		3	2:30MW, 10:30F	Sherman	Min304
R.O.T.C.-ARMY					
-All MS Students(1hr.Lab Req.of each MS Student)7:30, 9:30, 12:30or1:30F					
103(Basic Military)	MS102	1		Yauch	Long.1
-Sec 1			7:30M		
-Sec 2			10:30M		
-Sec 3			12:30M		
-Sec 4			10:30T		
-Sec 5			12:30T		
-Sec 6			2:30T		
-Sec 7			9:30W		
-Sec 8			11:30W		
203(Basic Military)	MS202	2		Rumpel	Long.2
-Sec 1			8:30MW		
-Sec 2			10:30MW		
-Sec 3			12:30M		
-Sec 4			10:30T		
-Sec 5			12:30T		
-Sec 6			2:30T		
-Sec 7			9:30W		
-Sec 8			11:30W		

Courses Listed By Colleges and By Departments Within

Department & Subject	Prerequisite	Cr.	Hour & Days	Instructor	Room
POLITICAL SCIENCE					
203(National Government)		3		Kim	
-Sec 1			9:30Th,1:30F		Mor308
-Sec 2			2:30MW,10:30F		AgE223
204(Nat'l.Gov't.in Action)		3		Bond	
-Sec 1			8:30MW,12:30Th		AgE223
-Sec 2			10:30MW,2:30Th		AgE223
301(Amer.Political Thought)		3		Amlund	
-Sec 1			9:30MW,1:30Th		Mor309
-Sec 2			12:30MW,8:30F		Mor212
324(International Relations)		3		Bond	
-Sec 1			9:30Th,1:30F		Mor212
496(Special Topics)		3			
-Sec 1 (International Law)			9:30MW,1:30Th	Kim	Min300
-Sec 2 (U.S.For.Policy SinceWWII)			1:30MW,9:30F	Bond	AgE201
-Sec 3 (Laws of War & Peace)			9:30Th,1:30F	Sharma	Min300
596(Special Topics)		3			
-Sec 1 (Congress)			3:30-4:45M+arrgt.	Amlund	Min205
-Sec 2 (Scope & Methods)			3:30-4:45T+arrgt.	Amlund	Min205
PSYCHOLOGY					
203(Intro. to Psychology)		4		Whittaker	Fest.Hall
215(Educ.Psychology)		3		See Education Dept.	
303(Hum.Growth&Dev.:Adoles.)		3		See Education Dept.	
321(Introd.Tests&Meas.)		3		See Education Dept.	
352(Industrial Psychology) Psych.203		3		By arrgt. Staff	Min403
383(Child Dev.&Guid.I)		4		See Home Economics-CDFR	
422(Adv. Tests&Meas.) Psych.321		3		5:30-8:00(p.m.) T Bentson	Min314
461(Comparative Psychology)Psych.203		3		3:30-4:45MW	Min403
496(Special Topics)		3			
-Sec 1 (Intro.to Clinical Psych.)			5:30-8:00(p.m.)	M Query	Min302
-Sec 2 (Excep. Child)			7:30-10:00(p.m.)	M Yando	Min403
-Sec 3 (Juv. Delinq.)			3:30-4:45Th	Yando	Min403
-Sec 4 (Res.in Physiol.Psych.)			By arrgt.	Singh	Min403
497(Research) Dept.appr.			By arrgt.	Singh	Min403
522(Ind.Intelligence Testing)Psy.203		3		5:30-8:00(p.m.) M Nelson	Min331
596(Special Topics) Dept.appr.		1-5		By arrgt. Whittaker	Min405B
599(Thesis & Research) Dept.appr.		3-15		By arrgt. Whittaker	Min405B
SOCIOLOGY					
202(Sociology for Nurses)		3		Query	St.Lukes
309(The Community)		3		8:30Th,12:30F Zimmerman	Fest.Hall
390(Soc.of the Great Plains)		3		3:30-4:45W+arrgt. Zimmerman	Min401
401(Sociology of Religion)		3		2:30MW,10:30F Sherman	Min304
405(Cult. Anthropology)		3		10:30Th,2:30F Query	Min305
419(Soc. of the Child)		3		9:30MW,1:30Th Groves	HE29
496(Special Topics)		3			
-Sec 1 (Soc. of Medicine)			2:30MW,10:30F	Query	Min205
-Sec 2			By arrgt.	Zimmerman	Min420
498(Seminar) 12crds.CDFR,SocorPsych		3		7:00-9:30(p.m.) M Groves	HE20
-Sec 1 (The Family&the Comm.)			1:30-4:20T	Stohler	HE228
-Sec 2 (Changing Role of Men&Women)			By arrgt.	Zimmerman	Min420
596(Special Topics) Grad.Stg.		1-5		By arrgt. Query	Min422
597(Research) Grad.Stg.		1-3		By arrgt. Query	Min422
598(Seminar)15crds.CDFR,Soc.orPsych.		3		7:00-9:30(p.m.) W Groves	HE20
-Sec 1 (Eval.Fam.Life Trends)			1:30-4:20Th	Stohler	HE110
-Sec 2 (Ethical Issues in Fam.Life)					
SPEECH					
108(Speech Fundamentals)		3			
-Sec A			8:30F	Walsh	LCT
-Sec B			11:30F	West	LCT
-Sec 1			7:30MW	Staff	Adm206
-Sec 2			8:30MW		Adm206
-Sec 3			9:30MW		Adm206
-Sec 4			10:30MW		Adm206
-Sec 5			11:30MW		Adm206
-Sec 6			12:30MW		Adm206
-Sec 7			1:30MW		Adm206
-Sec 8			7:30Th		Adm206
-Sec 9			8:30Th		Adm206
-Sec 10			9:30Th		Adm206
-Sec 11			10:30Th		Adm206
-Sec 12			11:30Th		Adm206
-Sec 13			12:30Th		Adm206
-Sec 14			1:30Th		Adm206
-Sec 15			9:30MW		Adm207
-Sec 16			9:30Th		Adm207
-Sec 17			8:30MW		NE Rm.F.Hall
-Sec 18			10:30MW		NE Rm.F.Hall
110(Introd. to Theatre)		3		Mrnak	
-Sec 1			8:30MW,12:30Th		LCT
-Sec 2			8:30Th,12:30F		LCT
119(Theatre Practice)		1		By arrgt. Staff	LCT
208(Stage Scenery&Light.)		3		10:30F Lane	Adm206
-Sec 1			2:30-4:20MW		LCT
-Sec 2			2:30-4:20Th		LCT
212(Intermed.Public Speaking)Spch.108		3		7:30F Ubbelohde	Adm206
-Sec 1			10:30MW		NE Rm.F.Hall
-Sec 2			10:30Th		NE Rm.F.Hall
-Sec 3			1:30MW		NE Rm.F.Hall
252(Debate Practice)		1		4:30-5:45W Ubbelohde	NE Rm.F.Hall
310(Directing)		3		1:30MTW+arrgt. West	Adm207
320(Clinical Pract.inSpch.Corr.)Appr		1-3			
-Sec 1			By arrgt.	Stockdell	Clinic
-Sec 2			By arrgt.	Sigman	Clinic
352(Debate Practice) Dept.appr.		1		4:30-5:45W Ubbelohde	NE Rm.F.Hall
406(Dev.of the Drama) Spch.110		3		9:30MW,1:30Th Walsh	Adm201
409(Radio Spch.-Production)		3		7:30F, Abel Radio Room Ceres	
411(Adv. Speaking) Spch.212		3		10:30MW,2:30Th West	Adm207
420(Spch.Dev.inChildren) Dept.appr.		3		8:30Th,12:30F Sigman	Clinic
492(Adv. Oral Interpretation)		3		10:30Th,2:30F West	Adm207
496(Special Topics)		3			
-Sec 1 (Esthetics) Dept.appr.			2:30MW,10:30F	Hertel	Min300
-Sec 2 (Anat.&Physiol.of Vocal Mech.)			7:00-9:30(p.m.)	T O'Hearn	Clinic
-Sec 3			By arrgt.	Walsh	Adm201
498(Seminar in Speech) Dept.appr.		3			
-Sec 1			By arrgt.	Stockdell	Clinic
-Sec 2			By arrgt.	Ubbelohde	NE Rm.F.Hall
-Sec 3			By arrgt.	Sigman	Clinic
599(Thesis & Research) Dept.appr.		3-9		By arrgt. Walsh	Adm201

COLLEGE OF CHEMISTRY AND PHYSICS

Department & Subject	Prerequisite	Cr.	Hour & Days	Instructor	Room
AGRICULTURAL AND BIOLOGICAL CHEMISTRY					
394(Intro. Biochemistry)	Chem.242	4		Meintzer	Ladd254
			1:30-4:20T		Ladd304
485(Biochem. Lab.)	Chem.494	2		Meintzer	Ladd308
495(Biochemistry)	Chem.494	3		Klosterman	Ladd254
595(Adv. Biochemistry)	Chem.495	3		Meintzer	Ladd359
ANALYTICAL CHEMISTRY					
108(Qual. Analysis)	Chem.105or107	5		Broberg	Ladd107
-Sec A			8:30-11:20MW	Staff	Ladd309
-Sec B			1:30-4:20MW	Staff	Ladd309
-Sec C			8:30-11:20Th	Staff	Ladd102
228(Quant. Analysis)	Chem.108	5		Garvey	Ladd254
			1:30-4:20Th		Ladd309
401(Fund.of Instr.Analysis)Ch228&242		4		Morris	Ladd254
			8:30-11:20Th		Ladd151
402(Adv.Top.in Instr.-Electron. Micro)Appr.		2		2-3hr. Labs Graf	Ladd361
482(Glass App. Fab.) Chem.481		1		By arrgt. Fleetwood	Ladd303
GENERAL AND INORGANIC CHEMISTRY					
101(General)		5		2:30MTW,10:30F Sands	Ladd107
			1:30-3:20F		Ladd101
102(General)	Chem.101	5			
-Sec 1			8:30Th,12:30WF	Heggeness	Ladd207
-Sec 2			11:30MW,3:30Th	Heggeness	Ladd207
-Sec A			7:30-9:20M	Staff	Ladd101
-Sec B			7:30-9:20W	Staff	Ladd101
-Sec C			9:30-11:20W	Staff	Ladd101
-Sec D			11:30-1:20T	Staff	Ladd101
-Sec E			1:30-3:20W	Staff	Ladd101

Department & Subject	Prerequisite	Cr.	Hour & Days	Instructor	Room
General and Inorganic Chemistry-Continued					
105(General)	Chem.104	5			
-Sec 1			7:30MTThF	Hill	Ladd207
-Sec 2			10:30MW,2:30Th	Satterfield	Ladd207
-Sec F			8:30-10:20F	Staff	Ladd101
-Sec G			9:30-11:20T	Staff	Ladd101
-Sec H			1:30-3:20M	Staff	Ladd101
-Sec J			1:30-3:20T	Staff	Ladd101
-Sec K			1:30-3:20Th	Staff	Ladd101
422(Inorganic Chemistry)	Chem.462	4		Morris	Ladd204
			7:30MW,1:30-4:20F		Ladd151
431(Adv.Inorganic Lab)	Dept.appr.	1-3		By arrgt. Staff	
ORGANIC CHEMISTRY					
242(Prin. of Organic Chem.)	Chem.241	5		Peterson	Ladd204
-Sec A			1:30-4:20M		Ladd304
-Sec B			1:30-4:20W		Ladd304
243(Prin. of Organic Chem.)	Chem.242	3		Rudesill	Ladd207
451(Org. Preparations)	Dept.appr.	2-5		By arrgt. Staff	
457(Org.Qual.Analysis)	Chem.242	4		Slater	Ladd254
			7:30T		Ladd251
			8:30-11:20Th,12:30-3:20F		Ladd254
543(Chem.of Hetero.Cpds.)	Chem.444	3		10:30Th,2:30F Rathmann	Ladd254
PHYSICAL CHEMISTRY					
361(Elm.Physical Chem.)	Chem.242, Math.109	5		8:30MW,12:30Th, Graf	Ladd359
			+1hr.rec.by arrgt.		Ladd359
462(Physical Chemistry)	Chem.461	3		11:30Th,3:30F Luoma	Ladd254
464(Physical Chem.Lab)	Chem.463	2		1:30-4:20MW	Ladd151
566(Colloids)	Chem.462	3		9:30Th,1:30F Fitch	Ladd254
569(Thermodynamics II)	Chem.568	3		9:30MW,1:30Th Satterfield	Ladd254
POLYMERS AND COATINGS					
476(Coatings III)	Chem.475	4		8:30Th,+1hr.arrgt. Rheineck	Ladd254
-Sec A			8:30-11:20F		Ladd51
-Sec B			12:30-3:20F		Ladd51
The following courses are given in Chemistry without reference to specific departments.					
496(Special Topics)	Dept.appr.	1-5		By arrgt. Staff	
497(Research)	Dept.appr.	1-3		By arrgt. Staff	
498(Seminar)	Grad.Stg.	1		4:30T	Ladd254
596(Special Topics)	Dept.appr.	1-5		By arrgt. Staff	
597(Research)	Dept.appr.	1-5		By arrgt. Staff	
598(Seminar)	Grad.Stg.	1		4:30T	Ladd254
599(Thesis & Research)	Dept.appr.	8-15		By arrgt. Staff	
PHYSICS					
107(Introductory Physics)		3		10:30MW,2:30Th Staff	SE22
203(General Physics)	Phys.201	4			
-Sec 1			8:30MW,12:30Th		SE22
-Sec 2			8:30Th,12:30F		SE22
-Sec A			9:30-11:20M		SE17
-Sec B			1:30-3:20M		SE17
-Sec C			9:30-11:20T		SE17
-Sec D			3:30-5:20T		SE17
-Sec E			7:30-9:20W		SE17
-Sec F (Arch)			7:30-9:20Th		SE17
232(General Physics)	Phys.231	5		11:30MW,3:30Th Staff	SE22
-Sec A (ME)			1:30-3:20Th		SE17
-Sec B			7:30-9:20F		SE17
-Sec C			9:30-11:20F		SE17
233(General Physics)	Phys.231-232	5			Staff
-Sec 1			9:30MW,1:30Th		SE22
-Sec 2			9:30Th,1:30MW		SE22
-Sec A (EE)			9:30-11:20M		SE26
-Sec B (ME)			1:30-3:20M		SE26
-Sec C (ME)			3:30-5:20M		SE26
-Sec D (Chem.,Phys.)			7:30-9:20T		SE26
-Sec E (EE)			9:30-11:20T		SE26
-Sec F (CE)			3:30-5:20T		SE26
-Sec G (ME)			3:30-5:20W		SE26
-Sec H (AE,IE)			3:30-5:20Th		SE26
321(Introd.Mod.Phys.Lab)	Phys.320	1		9:30-11:20T Hnojewyj	SE15
-Sec 1			9:30-11:20Th		SE15
343(Electromagnetism)	Phys.342	4		By arrgt. Staff	SE15
406(Nuclear Physics)	Phys.405	3		By arrgt. Staff	
507(Theoretical Phys.III)Phys505-506					

Courses Listed By Colleges and By Departments Within

Department & Subject	Prerequisite	Cr.	Hour & Days	Instructor	Room
Civil Engineering-Continued					
451 (Structural Theory V)	CE443	3	10:30MW, 2:30-5:20M	d'Errico	CE215
461 (Foundation Engr.)	CE417	3	1:30MW, 2:30-5:20T	Jorgenson	CE217
471 (Sanitary Lab. Pract.)	CE408, 410	3	10:30TH, 2:30-5:20F	Butler	CE217
553 (Plates and Shells)	Dept. appr.	3	By arrgt.	Wetterstrom	
554 (Prestressed Concrete)	CE405	3	11:30TH, 2:30-5:20W	Keshava	CE215
596 (Spec. Topics-Pract. & Real. Sr. or Constr. Spec.)	GradStg	2	7:30-9:30 (p.m.)	T Jorgenson	CE215
*Other graduate courses as required by arrangement.					
ELECTRICAL AND ELECTRONICS ENGINEERING					
220 (Circuit Analysis I)	M252, Phys. 232	4	Staff		
-Sec 1			8:30MW, 12:30TH		EEE213
-Sec 2			10:30TH, 2:30WF		EEE213
-Sec 3			8:30MW, 12:30TH		EEE219
221 (Circuits Lab I)	Cr.orReg.inEE220	1	Staff		
-Sec 1			7:30-10:20T		EEE208
-Sec 2			2:30-5:20W		EEE208
-Sec 3			2:30-5:20M		EEE208
-Sec 4			7:30-10:20W		EEE208
-Sec 5			2:30-5:20T		EEE208
-Sec 6			8:30-11:20F		EEE208
-Sec 7			8:30-11:20S		EEE208
314 (Circuit Analysis IV)	EEE313	5	Staff		
-Sec 1			9:30MW, 1:30TH		EEE209
-Sec 2			9:30TH, 1:30MW		EEE219
318 (Engr. Computer Applic.)	Math.380	3	Staff		
328 (Electronics II)	EEE321	4	Staff		
-Sec 1			10:30MW, 2:30TH		EEE209
-Sec 2			10:30TH, 2:30WF		EEE209
329 (Electronics Lab II)	Cr.orReg. in	1	Staff		
-Sec 1	EEE328		8:30-11:20T		EEE206
-Sec 2			12:30-3:20F		EEE206
-Sec 3			8:30-11:20M		EEE206
-Sec 4			2:30-5:20T		EEE206
359 (Electromag. Energy Conv. II)	EEE357	4	Staff		
-Sec 1			11:30MW, 3:30TH		EEE209
-Sec 2			11:30TH, 3:30WF		EEE209
360 (Machinery Lab. II)	Cr.orReg. in	1	Staff		
-Sec 1	EEE359		8:30-11:20Th		EEE117
-Sec 2			12:30-3:20F		EEE117
-Sec 3			2:30-5:20M		EEE117
-Sec 4			8:30-11:20F		EEE117
382 (Electronics & Instrum.)	EEE380	4	Staff		
-Sec 1			9:30MW, 1:30TH		EEE213
-Sec 2			9:30TH, 1:30MW		EEE213
383 (Engr. Lab. II)	Cr.orReg.inEE382	1	Staff		
-Sec 1			8:30-11:20T		EEE207
-Sec 2			8:30-11:20W		EEE207
-Sec 3			2:30-5:20W		EEE207
-Sec 4			2:30-5:20Th		EEE207
-Sec 5			2:30-5:20M		EEE207
-Sec 6			8:30-11:20S		EEE207
404 (Electromag. Fields III)	EEE403	4	Staff		
437 (Systems & Design II)	EEE436	4	Staff		
-Sec 1			8:30TH, 12:30MW		EEE209
-Sec 2			8:30MW, 12:30TH		EEE209
438 (Systems Lab. I)	Cr.orReg.inEE437	1	Staff		
-Sec 1			2:30-5:20M		EEE210
-Sec 2			8:30-11:20F		EEE210
-Sec 3			2:30-5:20T		EEE210
-Sec 4			2:30-5:20Th		EEE210
508 (Circuit Analysis VI)	EEE507	3	Staff		
512 (Elect. Power Syst. Engr. III)	appr.	3	T VanSlyck		EEE219
533 (Electronics VI)	EEE532	3	Staff		
541 (Computer Circuits II)	EEE540	3	Staff		
552 (Servomechanisms III)	EEE551	3	Staff		
599 (Thesis & Research)	Dept. appr.		By arrgt.		EEE
INDUSTRIAL ENGINEERING					
280 (Intro. to Ind. Engr.)		3	Staff		
-Sec 1			1:30MW, 9:30F		CE&IE214
-Sec 2			10:30TH, 2:30F		CE&IE214
366 (Intro. to Op. Res.)	M376, 451IE381	3	Nilson		CE&IE214
446 (Engr. Practice)	Engr. Sr., appr.	3	Nilson		CE&IE214
451 (Methods Engr.)	IE350	3	Nilson		CE&IE214
458 (Syst. & Proc. Design II)	IE455	3	Serrin		CE&IE214
470 (Anal. of Ind. Operations)	IE455, 467	3	Ebeling		CE&IE214
481 (Engr. Valuation)	IE480	3	Serrin		CE&IE214
496 (Special Topics)	Dept. appr.	1-5	By arrgt.		CE&IE238
530 (Engr. Aspects of Wage Det.)	IE385	3	Serrin		CE&IE214
552 (Adv. Ind. Engr.)	IE366, 470	3	Raley		CE&IE214
560 (Adv. Quality Control)	IE462	3	Ebeling		CE&IE214
599 (Thesis & Research)	Dept. appr.		By arrgt.		CE&IE238
MECHANICAL ENGINEERING					
108 (Descriptive Geometry)	ME107	3	Staff		
-Sec 1 (CE)			8:30-10:20MW, 12:30-2:20Th		Do1212
-Sec 2 (AgE)			8:30-10:20MW, 12:30-2:20Th		Do1215
-Sec 3 (Arch)			12:30-2:20MW, 8:30-10:20F		Do1215
-Sec 4 (Arch)			12:30-2:20MW, 8:30-10:20F		Do1202
-Sec 5 (Arch)			2:30-4:20MW, 10:30-12:20F		Do1212
-Sec 6 (CE)			10:30-12:20TH, 2:30-4:20F		Do1215
-Sec 7 (IE&AgE)			10:30-12:20TH, 2:30-4:20F		Do1202
110 (Engr. Graphics II)	ME107	2	Staff		
-Sec 1 (EEE)			8:30-10:20MW, 12:30-2:20Th		Do1202
-Sec 2 (EEE)			8:30-10:20MW, 12:30-2:20Th		Do1.10
-Sec 3 (ME)			10:30-12:20MW, 2:30-4:20Th		Do1202
-Sec 4 (ME)			10:30-12:20MW, 2:30-4:20Th		Do1.10
-Sec 5 (EEE)			8:30-10:20TH, 12:30-2:20F		Do1202
-Sec 6 (ME)			8:30-10:20TH, 12:30-2:20F		Do1.10
-Sec 7 (EEE)			10:30-12:20TH, 2:30-4:20F		Do1212
-Sec 8 (ME)			10:30-12:20TH, 2:30-4:20F		Do1.10
203 (Prod. Processes I)	ME107	2	Staff		
-Sec 1 (AgE)			1:30-5:20F		Do1.118
-Sec 2			8:30-12:20Th		Do1.137
204 (Prod. Processes II)	ME203	2	Staff		
-Sec 1			1:30-5:20M		Do1.118
215 (Engr. Mat'l, Tls., & Proc.)	Chem.107	3	Staff		
216 (Metal Fab. I)	ME107	1	Staff		
-Sec 1			8:30-10:20F		Do1.133
-Sec 2			1:30-3:20T		Do1.133
-Sec 3			3:30-5:20T		Do1.133
217 (Metal Fab. II)	ME216	1	Staff		
-Sec 1			7:30F		Do1.6
-Sec 2			8:30-10:20Th		Do1.133
-Sec 3			3:30-5:20W		Do1.133
-Sec 4			8:30-10:20T		Do1.133
230 (Statics)	Phys. 231, Math. 251	5	Staff		
-Sec 1 (ME)			7:30MTWThF		Do1.117
-Sec 2 (ME)			2:30MW, 10:30TH		Do1.117
-Sec 3 (Arch)			9:30MW, 1:30TH		Do1.117
240 (Kinematics)	Phys. 231, ME110	3	Staff		
-Sec 1 (ME)			11:30M, 10:30-12:20W, 2:30-4:20Th, 2:12		Do1215
-Sec 2			9:30T, 8:30-10:20Th, 12:30-2:20F, Do1215		
-Sec 3 (ME)			9:30T, 8:30-10:20Th, 12:30-2:20F, Do1212		
327 (Dynamics)	ME230	4	Staff		
-Sec 1 (EEE)			10:30MW, 2:30TH		Do1.117
-Sec 2 (EEE)			8:30TH, 12:30WF		Do1.117
-Sec 3 (CE)			8:30MW, 12:30TH		Do1.117
335 (Basic Thermodynamics)	Phys. 233, Math. 252	5	Staff		
-Sec 1 (EEE)			1:30MW, 9:30TH		Do1.118
-Sec 2 (EEE)			9:30MW, 1:30TH		Do1.118
341 (Energy Conversion II)	ME336	5	Staff		
-Sec 1			11:30MW, 3:30TH		Do1.118
-Sec 2			3:30MW, 11:30TH		Do1.118
425 (Modern Power Plants)	Sr. Stg.	3	Staff		
431 (Machine Design)	ME328	4	Staff		
-Sec 1			1:30TH, 9:30W		Do1.6
-Sec 2			9:30-11:20F		Do1.6
436 (System Design)		3	Staff		
-Sec 1	ME429 or 439		12:30F, 8:30-11:20TH		Do1204
-Sec 2	ME429 or 439		12:30F, 8:30-11:20TH		Do1.6
-Sec 3	ME432		2:30M, 2:30-5:20W, 8:30-11:20F		Do1.10
437 (Engr. Materials)	ME441	3	Staff		
476 (Mechanical Lab.)	ME429 or 439	2	Staff		
-Sec 1 (ME)			2:30-5:20W, 8:30-11:20F		Do1.128, 126
-Sec 2 (ME)			2:30-5:20Th		Do1.128, 126
-Sec 3 (Aero)			8:30-11:20MW		Do1.128, 126
477 (Mechanical Lab.)	ME432	2	Staff		
495 (Professional Dev.)	Sr. Stg.	1	Staff		
496 (Spec. Topics-Cryogenics)	ME341	3	Staff		
497 (Research)	Dept. appr.	1-3	By arrgt.		Staff
500 (Automatic Proc. Control)	Dpt. appr.	3	By arrgt.		Staff
526 (Adv. Htg., Vent., Air Cond.)	ME432	4	By arrgt.		Staff

Department & Subject	Prerequisite	Cr.	Hour & Days	Instructor	Room
Mechanical Engineering-Continued					
533 (Adv. Machine Design)	ME531	3	7:30MWF	Staff	Do1.204
538 (Engr. Analysis)	Math.303	3	By arrgt.	Staff	
596 (Spec. Topics-Exp. Ht. Trans.)	ME440	3	By arrgt.	Staff	
599 (Thesis & Research)	Dept. appr.	1-3	By arrgt.	Staff	
AERONAUTICAL ENGINEERING					
314 (Aerodynamics II)	Aero312	3	8:30TH, 12:30F	Staff	Do1201
322 (Airplane Stress Anal.)	ME328	4	8:30MW, 12:30TH	Staff	Do1201
414 (Supersonic Aerodynamics)	CE309	3	12:30MW, 8:30F	Staff	Do1201
416 (Aerodynamics Lab)	Aero412	2	8:30-11:20TH	Staff	Aero Lab
444 (Airplane Design II)	Aero412	4	1:30WF, 2:30-5:20TH	Staff	Do1.6, 11
COLLEGE OF HOME ECONOMICS					
GENERAL HOME ECONOMICS					
102 (Social Usage)		1	Staff	Smith	
-Sec 1			12:30W		HE29
-Sec 2			9:30F		HE29
ART					
100 (Intro. to Art)		3			
-Sec 1			11:30MW	Jurcak	HE29
-Sec 2			1:30-3:20M	Johnson	HE111
-Sec 3			3:30-5:20T	Johnson	HE111
-Sec 4			1:30-3:20W	Johnson	HE111
-Sec 5			10:30-12:20F	Johnson	HE111
103 (Fund. of Design)		1		Johnson	
-Sec 1			1:30-3:20T		HE10
-Sec 2			2:30-4:20TH		HE10
111 (Costume Des. & Apprec.)	Art100	3		Jurcak	
-Sec 1			8:30F		HE29
-Sec 2			9:30-11:20MW		HE111
-Sec 3			3:30-5:20MW		HE111
-Sec 4			9:30-11:20TH		HE111
206 (Drawing I)	Art102	3		Jurcak	
215 (Weaving)		3		Fisher	SE203
217 (Beginning Ceramics)		3		Peotter	HE10
302 (Home Plannng & Furn.)	Art100	5		Berger	HE11
-Sec 1			1:30-3:20F		HE11
312 (Composition & Painting)	Art310	3		Peotter	HE11
315 (Adv. Weaving)	Art215	3		Fisher	SE203
317 (Intermed. Ceramics)	Art217	3		Peotter	HE10
319 (Jewelry & Art Metal)		3		Peotter	HE10
400 (Family Housing)	Art302	3		Berger	HE11
402 (Interior Design)	Art302	3		Berger	HE11
412 (Displays)	Art100	3		Peotter	HE111
417 (Adv. Ceramics)	Art317	3		Peotter	HE10
496 (Special Topics)	Dept. appr.	1-5		Staff	HE6or7
497 (Research)	Dept. appr.	1-3		Staff	HE6or7
CHILD DEVELOPMENT AND FAMILY RELATIONS					
383 (Child Dev. & Guid. I)	Jr. Stg. Psy215	4		Chambers	HE110
-Sec 1			11:30TH, 3:30F	Ceres.	
386 (Family Relations)		3			
-Sec 1			9:30TH, 1:30F		

Courses Listed By Colleges and By Departments Within

Department & Subject	Prerequisite	Cr.	Hour & Days	Instructor	Room
TEXTILES AND CLOTHING					
124 (Fund. Cloth. Problems)	Pretest	5		Buehl	
-Sec 1			9:30Th, 8:30-10:20MW, 12:30-2:20Th		HE127 HE127
-Sec 2			8:30Th, 12:30-2:20MWF		HE127
127 (Textiles)		3		Williams	HE29
-Sec 1			12:30-2:20M		HE33
-Sec 2			12:30-2:20T		HE33
-Sec 3			3:30-5:20T		HE33
-Sec 4			3:30-5:20W		HE33
128 (Fund. Cloth. Problems)	Pretest	3		Litherland	
-Sec 1			11:30F, 3:30-5:20MW		HE128
-Sec 2			3:30F, 11:30-1:20Th		HE128
129 (Fund. Prin. of Construction)		5		Litherland	HE128
	Pretest		8:30-10:20MW, 12:30-2:20F		HE128
226 (Intermed. Cloth. Prob.) T&C124 or 128		3		Rising	
-Sec 1			2:30Th, 10:30-12:20MW		HE128
-Sec 2			9:30F, 1:30-3:20MW		HE128
323 (Flat Pattern Tech.)	T&G226	4		Reynolds	HE127
			2:30-4:20Th		HE127
325 (Cloth. for Pre-Sch. Child)	T&C124, 128 or 129	3		Rising	HE127
			2:30F, 10:30-12:20Th		HE127
327 (Applied Dress Design)	T&C323	3		Reynolds	HE128
425 (Cloth. & Human Behavior) T&C127, 124 or 128, 129 Soc. 201, 418		3		Reynolds	HE33
			9:30MW, 1:30Th		HE33
426 (Tailoring)	T&G226	3		Reynolds	HE127
			2:30-4:20MW, 10:30-12:20F		HE127
496 (Spec. Topics)	Sr. Stg., Dept. appr.	1-3		Staff	HE127
599 (Thesis & Research)	Grad. Stg.		By arrgt.	Staff	HE

COLLEGE OF PHARMACY

PHARMACEUTICAL CHEMISTRY AND BIONUCLEONICS

234 (Quant. Pharm. Assay)	Chem. 205, 242	4		Nobles	Sud37
			9:30Th, 2:30-5:20W, 9:30-12:20F		Sud5
325 (Inorganic Pharm. Chem.)	Chem. 107	3		Nobles	Sud37, 5
357 (Organic Pharm. Chem.)	PhCh. 356	4		Vacik	Sud120
450 (Pharm. Isotope Tech.)	Sr. Stg., Trig, Physics	4		Staiff	Sud120
-Sec A			2:30-5:20M		Sud30
-Sec B			2:30-5:20T		Sud30
-Sec C			2:30-5:20Th		Sud30
-Sec D			8:30-11:20F		Sud30
-Sec E			1:30-4:20F		Sud30
496 (Special Topics)	Dept. appr.	1-5	By arrgt.	Staff	Sud37
497 (Research)	Dept. appr.	1-3	By arrgt.	Staff	Sud37
517 (Chem. of Nat. Occ. Med.)	Dept. appr.	3	By arrgt.	Staff	Sud37
537 (Adv. Med. Chem.)	Dept. appr.	3	By arrgt.	Staff	Sud37
564 (Health Physics)	PhCh. 460	3	By arrgt.	Staff	Sud37
596 (Special Topics)	Dept. appr.	1-5	By arrgt.	Staff	Sud37
597 (Research)	Dept. appr.	1-5	By arrgt.	Staff	Sud37
598 (Grad. Seminar)	Dept. appr.	1	By arrgt.	Staff	Sud37
599 (Thesis & Research)	Grad. Stg.		By arrgt.	Staff	Sud37

PHARMACOLOGY

362 (General Phcog.)	Phcog. 361	5		Schermeister	Sud224
-Sec A			8:30ThF, 12:30W 2:30-5:20M	Bhatti	Sud221
-Sec B			1:30-4:20T		Sud221
-Sec C			2:30-5:20W		Sud221
401 (Pharmacog. of Allergens)	Phcog. 362	3	By arrgt.	Schermeister	Sud224
402 (Nat. Prod. of Med. Plants)	Dept. appr.	4	By arrgt.	Bhatti	Sud224
404 (Hydroponic Cult. of Med. Plts)	Pg360	3	By arrgt.	Schermeister	Sud224
414 (Cult. of Med. Plants)	Phcog. 360	5	By arrgt.	Schermeister	Sud224
496 (Special Topics)	Dept. appr.	1-5	By arrgt.	Staff	Sud224
497 (Research)	Dept. appr.	1-3	By arrgt.	Staff	Sud224
501 (Adv. Pharmacog.)	Phcog. 362	1-5	By arrgt.	Staff	Sud224
596 (Special Topics)	Dept. appr.	1-5	By arrgt.	Staff	Sud224
597 (Research)	Dept. appr.	1-5	By arrgt.	Staff	Sud224
599 (Thesis & Research)	Grad. Stg.		By arrgt.	Staff	Sud224

PHARMACOLOGY

265 (Intro. to Pharmacol.)	Zool. 108 (For Nurses)	2	11:30Th	Reopelle	St. Luke's
410 (Pharmacology)	Phcol. 311, Bact. 270	5		Lawrence	Sud120
-Sec A			11:30MIWTh		Sud205
-Sec B			2:30-5:20M		Sud205
-Sec C			2:30-5:20T		Sud205
430 (Toxicology)	Phcol. 412	3		Glenn	Sud120
-Sec A			10:30MW 7:30-10:20W		Sud205
-Sec B			7:30-10:20Th		Sud205
-Sec C			2:30-5:20Th		Sud205
-Sec D			8:30-11:20F		Sud205
-Sec E			1:30-4:20F		Sud205
496 (Special Topics)	Dept. appr.	1-5	By arrgt.	Staff	Sud208
497 (Research)	Dept. appr.	1-3	By arrgt.	Staff	Sud208
503 (Tech. of Pharmacol. Invest.)	Phc502, Dept. appr.	5	By arrgt.	Glenn, Reopelle	Sud208
512 (Anal. Toxicology II)	Phcol. 510	4	By arrgt.	Prouty	Sud208
596 (Special Topics)	Dept. appr.				
-Sec 1 (Adv. Phcol. III)		5	By arrgt.	Glenn	Sud208
-Sec 2		1-5	By arrgt.	Staff	Sud208
597 (Research)	Dept. appr.	1-5	By arrgt.	Staff	Sud208
598 (Grad. Seminar)	Dept. appr.	1	By arrgt.	Staff	Sud208
599 (Thesis & Research)	Grad. Stg.		By arrgt.	Staff	Sud208

PHARMACY

117 (Intro. Pharmacy)	Ph. 116	2		Strommen	
-Sec 1			11:30Th		Sud224
-Sec 2			1:30MW		Sud120
209 (Emergency Treatment)		1	2:30-4:20T	Miller	Sud120
223 (Cosmetic Prin. & Tech.)	Ph. 222	4		Norquist	Sud208
			10:30MW, 2:30Th 2:30-5:20W		Sud111
311 (Cosmetic Science)	Ph. 371 or Appr.	3	9:30Th, 2:30-5:20T	Norquist	Sd224, 111
318 (Pharm. Problems)		3	11:30MW, 3:30Th	Vincent	Sud224
330 (Intro. to Hosp. Pharm.)	Dept. appr.	3	10:30MW, 2:30Th	Ozbun	Sud224
408 (Prescriptions)	Ph. 407	4		Sleight	Sud208
-Sec A			7:30-10:20MW		Sud107
-Sec B			2:30-5:20MW		Sud107
-Sec C			7:30-10:20Th		Sud107
429 (Manuf. Specialties)	Ph. 428	2		Sleight	Sud120
			12:30T+2hrs. Lab		Sud120
440 (Aerosols)	Dept. appr., Ph. 315	3	By arrgt.	Henderson	Sud120
472 (Manuf. Pharmacy)	Ph. 371	3		Henderson	Sud37
-Sec A			8:30MW		Sud25
-Sec B			2:30-5:20Th		Sud25
-Sec C			9:30-12:20F		Sud25
473 (Manuf. Pharmacy)	Ph. 472	3	By arrgt.	Henderson	Sud120
496 (Special Topics)					
-Sec 1 (First Aid Instr. Crse.)	Dept. appr.	2	2:30-4:20Th	Miller	Sud120
-Sec 2 (Health Center)	Ph. 407	1	By arrgt.	Sleight	Hlth. Center
-Sec 3 (Med. Library Pract.)	SrStg	4	By arrgt.	Stallings	Lib236
-Sec 4	Dept. appr.	1-5	By arrgt.	Staff	Sud120
497 (Research)	Dept. appr.	1-3	By arrgt.	Staff	Sud120
498 (Seminar)	Dept. appr.	1	By arrgt.	Miller	Sud120
-Sec 1			By arrgt.	Norquist	Sud120
-Sec 2			By arrgt.	Henderson	Sud120
502 (Prod. Formulations)	Dept. appr.	3	By arrgt.	Sleight	Sud120
510 (Hosp. Pharm. Proced.)	Ph. 472, appr.	3	By arrgt.	Staff	Sud120
542 (Hosp. Pharm. Residency)	Dept. appr.	5	By arrgt.	Staff	Sud120
552 (Pharm. Chromatography)	Dept. appr.	3	By arrgt.	Vincent	Sud120
596 (Special Topics)	Dept. appr.	1-5	By arrgt.	Staff	Sud120
597 (Research)	Dept. appr.	1-5	By arrgt.	Staff	Sud120
598 (Grad. Seminar)	Dept. appr.	1	4:30T	Henderson	Sud120
599 (Thesis & Research)	Grad. Stg.		By arrgt.	Staff	Sud120

PHARMACY ADMINISTRATION

240 (Pharm. Accounting)	Soph. Stg.	3	7:30ThF	Haakenson	Sud208
403 (Pharm. Jurisprudence)	Econ322, Sr. Stg.	4	1:30MW, 10:30Th	Haakenson	Sud208
445 (Pharm. Detailing)	Sr. Stg.	2	7:30MF	Stone	Sud120
451 (Pharm. Management)	PhAd450	4	By arrgt.	Haakenson	Sud208
460 (Pharm. Personnel Admin.)	Dpt. appr.	3	11:30MW, 3:30Th	Haakenson	Sud208
496 (Special Topics)	Dept. appr.	1-5	By arrgt.	Haakenson	Sud208
497 (Research)	Dept. appr.	1-3	By arrgt.	Haakenson	Sud208

Change From Classic To Modern Theme Of Display

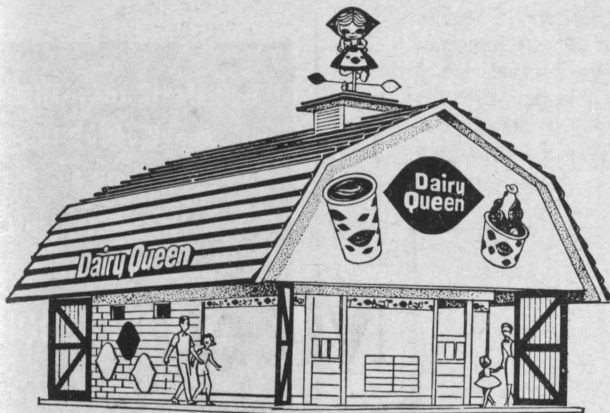
by Kay Dorrance
 The 19th Century Masters art exhibition is now on display in Hultz Lounge in the Union.
 This exhibition consists of 50 original etchings, engravings, mezzotints, woodcuts and lithographs.
 The dominant theme of the prints is the transition from classic to modern art. The greater freedom of expression and vitality of the 19th century is expressed in the simple use of line and beginnings of abstract art.
 Now on exhibit in the Alumni Lounge and Lower Hall of the Union are paintings from "Tokyo Children Look at the

Olympics."
 These paintings depict the color and excitement of the 1964 Olympic Games. Painted by the children of Tokyo, the prints express the Oriental atmosphere and thrills of the competing athletes.
 Lent by the George Binet Print Collection, the 19th Century Masters exhibition is from the Binet Gallery in Massachusetts.
 The paintings from "Tokyo Children Look at the Olympics" were lent by the New York-Tokyo Sister-City Affiliation. Both exhibitions will be displayed throughout February.

Everyone Needs A Doc!

DOC BUCHANAN - SBVP

OPENED FOR THE SEASON



Stop in for hotdogs, barbeques, malts, sundaes and cones in the new enclosed serving area.

It's the one with the

BIG RED ROOF

NORTH SIDE DAIRY QUEEN

(on North University Drive)



WE AIM TO PLEASE

Corsages, Bouquets, Centerpieces
 Blooming Plants & all Cut Flowers
 in season.

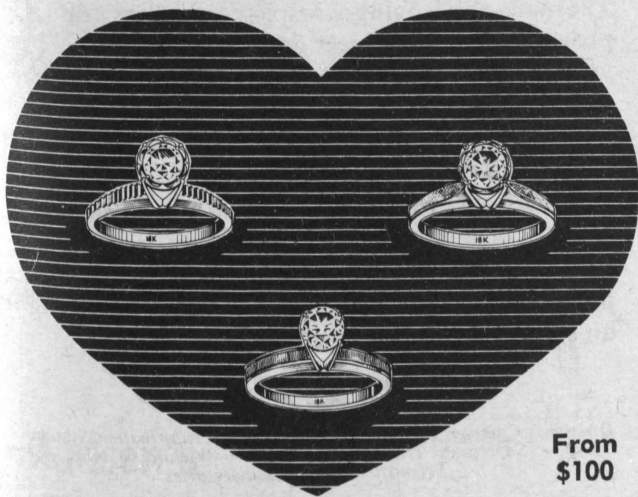
YOUR FLOWER MARKET

All Occasion

Flower Supply

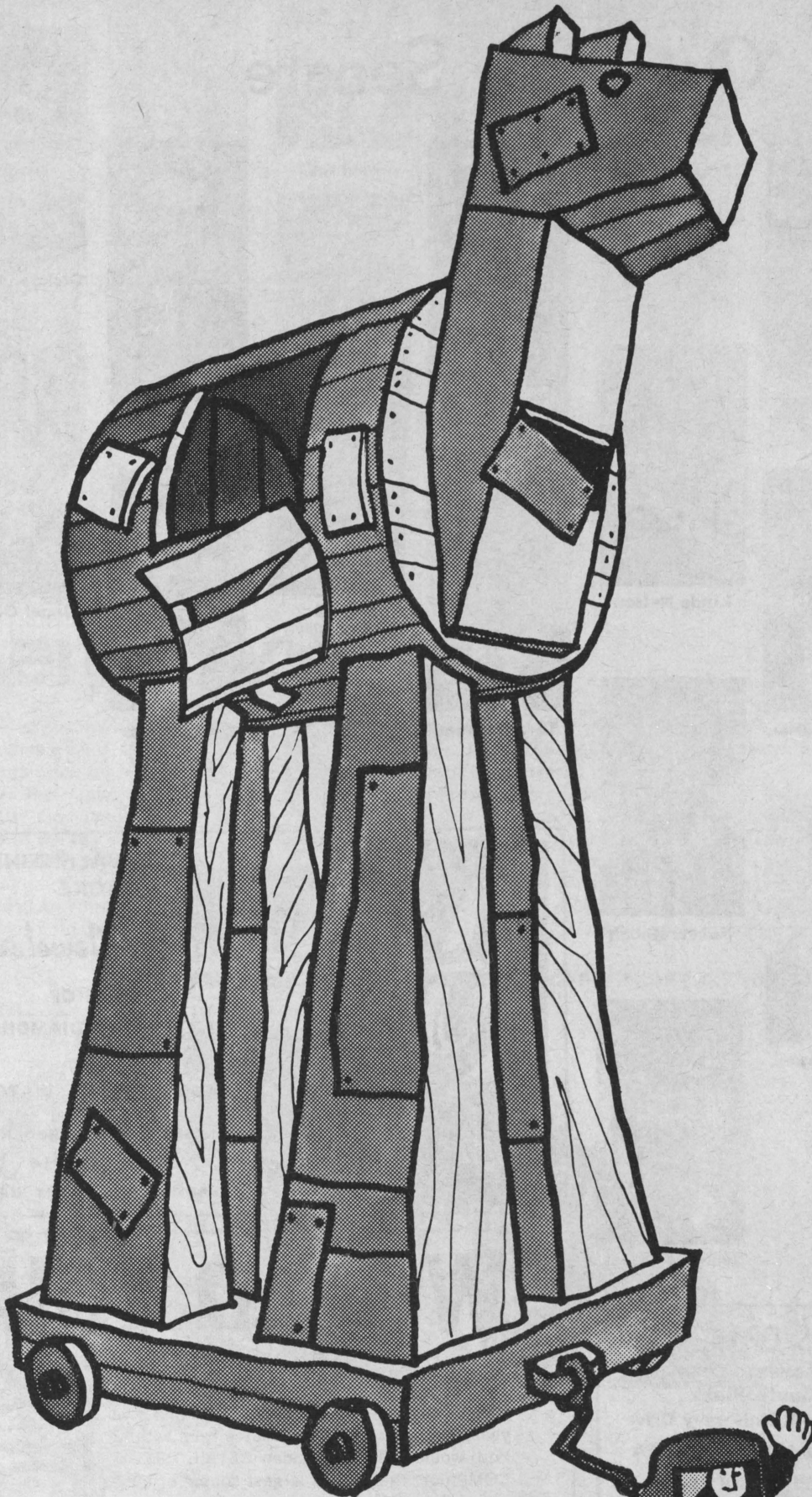
Phone 232-8979

FOR YOUR VALENTINE



From \$100

CRESCENT JEWELERS



It's trade-in time for tired old myths.

Like the one about business. Especially big business. That it is beyond the rugged individualist's wildest daydream to enter this holy of holies because he'll lose something that's very sacred — like his independence.

Sure, it can happen. If a guy or gal wants to hide, or just get by, or not accept responsibility, or challenges.

We're not omniscient enough or stupid enough to speak for all business, but at a company like Western Electric, bright ideas are not only welcome, they are encouraged. And no door is shut. Create a little stir, go ahead, upset an old applecart (we replace shibboleths at a terrific pace — we have to as manufacturing and supply unit of the Bell System — in order to provide your Bell telephone company with equipment it needs to serve you.)

There's an excitement in business. True, we're in it to make a profit, but working to

find new and better ways to make things that help people communicate is very rewarding and satisfying. Did you ever hear these wry words of Oliver Wendell Holmes? "Never trust a generality — not even this one."

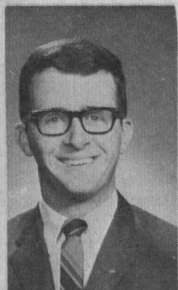
That's how we feel about the generality that claims you'll just become a little cog in a company like Western Electric. You might, of course, but if you consider yourself an individual now, odds are 10 to 1 that you'll keep your individuality. And cherish it. And watch it grow. Even at big, big Western Electric.

You know, that's the only way we'd want you to feel. If you feel like coming in with us.



Western Electric
 MANUFACTURING & SUPPLY UNIT OF THE BELL SYSTEM

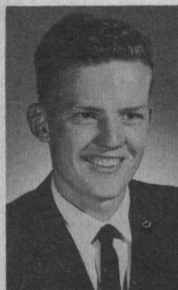
Candidates For One-Year Senate



Bob DuBord



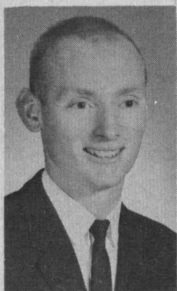
Linda Nelson



Marlow Nelson



Bob Hanson



Robert Keogh



Jeanette Ulfers



John Garaas



Terry Grimm



Doug Christianson



Gary Krump



Chuck Gress



Glenda Brown



Janet Olsen

Young Man Is Named To Dean Of Students Post

David A. Young officially became dean of students of North Dakota State University on Feb. 1, 1967. He was previously acting dean of students.

Dr. Young explained that he was not officially appointed as dean of students earlier because he had been here only since July 1965, and that time was necessary in order to evaluate his abilities.

He pointed out that he is one of the youngest deans of students in the country of a University of this size.


"There is always questions of how involved the faculty should be in the governmental affairs of the students," Young said, "but

in meeting with senate they insisted that the entire administration have a chance to comment on changes."

Young stated that more student involvement in decision making is desirable, but yet the must work within the authority structure of the University.

"Some progress is being made in that direction," Young said. "We are trying to establish a new setup whereby a certain percentage of the senators meet weekly with the dean of students."

"The entire senate would be too large a group to work with but the weekly representatives would have a clear line of responsibility to the rest of the senate. In the same way, senate should have a clear line of responsibility to the entire student body, but this will take some doing."



YOUR VALENTINE STORE

Hale Jewelers

HOME OF
ARTCARVED DIAMONDS
AND
FAMOUS BRAND WATCHES

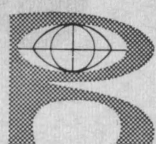
213 BROADWAY, FARGO, N. D.
DIAL 235-4714

CREDIT TERMS FOR STUDENTS

WOULD YOU:

like to work for a company that will have more than 300 management openings within five years—a company that promotes from within? You would? Then consider RETAIL CREDIT COMPANY, the world's largest source of business information.

ON-CAMPUS INTERVIEW. February 13, 9 to 5
MEMORIAL UNION



RETAIL CREDIT COMPANY
Home Office:
Atlanta, Georgia

KOBS OPTICIANS
(FORMERLY LOHN)
South Plaza
1621 South University Drive
FARGO, NORTH DAKOTA

COMPLETE OPTICAL SERVICE
CONTACT LENSES REPAIRS

Ph. 235-5185

It's
Unamerican
Not To Elect
LINCOLN HUSEBY
Two Year Senate

AMERICAN LUTHERAN CHURCH
12th Ave. & 10th St. N.
SUNDAY WORSHIP
9:00 & 11:15 A.M.
(Communion 1st Sunday)
Albert E. Erickson, Pastor

Dr. M. A. Bursack
Optometrist - Phone 235-8727
Black Building
Suite 502
Fargo, N. Dak.

Taco's

Taco Shop

MEXICAN FOOD

Giant Grinders



Char-Broiled Hamburgers

"SPEEDY SERVICE"
420 NORTH UNIVERSITY, FARGO, NO. DAK.
PHONE 232-7734

Chile


Engineers:

Meet Boeing

Campus Interviews Thursday and Friday February 16 and 17

The many challenging aerospace programs at Boeing provide a dynamic career growth environment. Pick your spot in applied research, design, test, manufacturing, service or facilities engineering, or computer technology. If you desire an advanced degree and qualify, Boeing will help you financially with its Graduate Study Program at leading universities near company facilities.

Visit your college placement office and schedule an interview with the Boeing representative. Boeing is an equal opportunity employer.



Divisions: Commercial Airplane • Missile and Information Systems • Space • Supersonic Transport • Vertol • Wichita • Also, Boeing Scientific Research Laboratories

Candidates For Two Year Senate



Dan Devlin



James Hauge



John Mason



Donald Hagen



Roger Beaver



Rodney Link



Nelson Berg



Roger Hegvik



Jim Johnson



Dale Carpentier



William Harbeke



Mel Nelson

ORELL SCHMITZ

for

1 Year Senate

and a
more effective
Student Government

A Different Steak
Special Every Week
\$.90

Dessert and all
trimmings included

BRIGGS WOODS

915 Main Ave., Moorhead



SORITA \$100 TO 2100



JUDD \$300.00
WEDDING RING 150

Beautiful styling enhances
the brilliance and beauty of
the perfect Keepsake center
diamond.

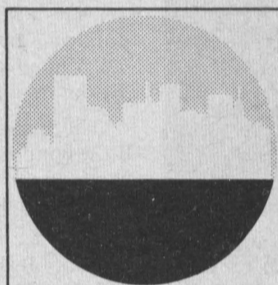
Rings enlarged to show detail.
Trade-Mark Reg.

REGISTERED
Keepsake
DIAMOND RINGS

Madsen's Jewelry

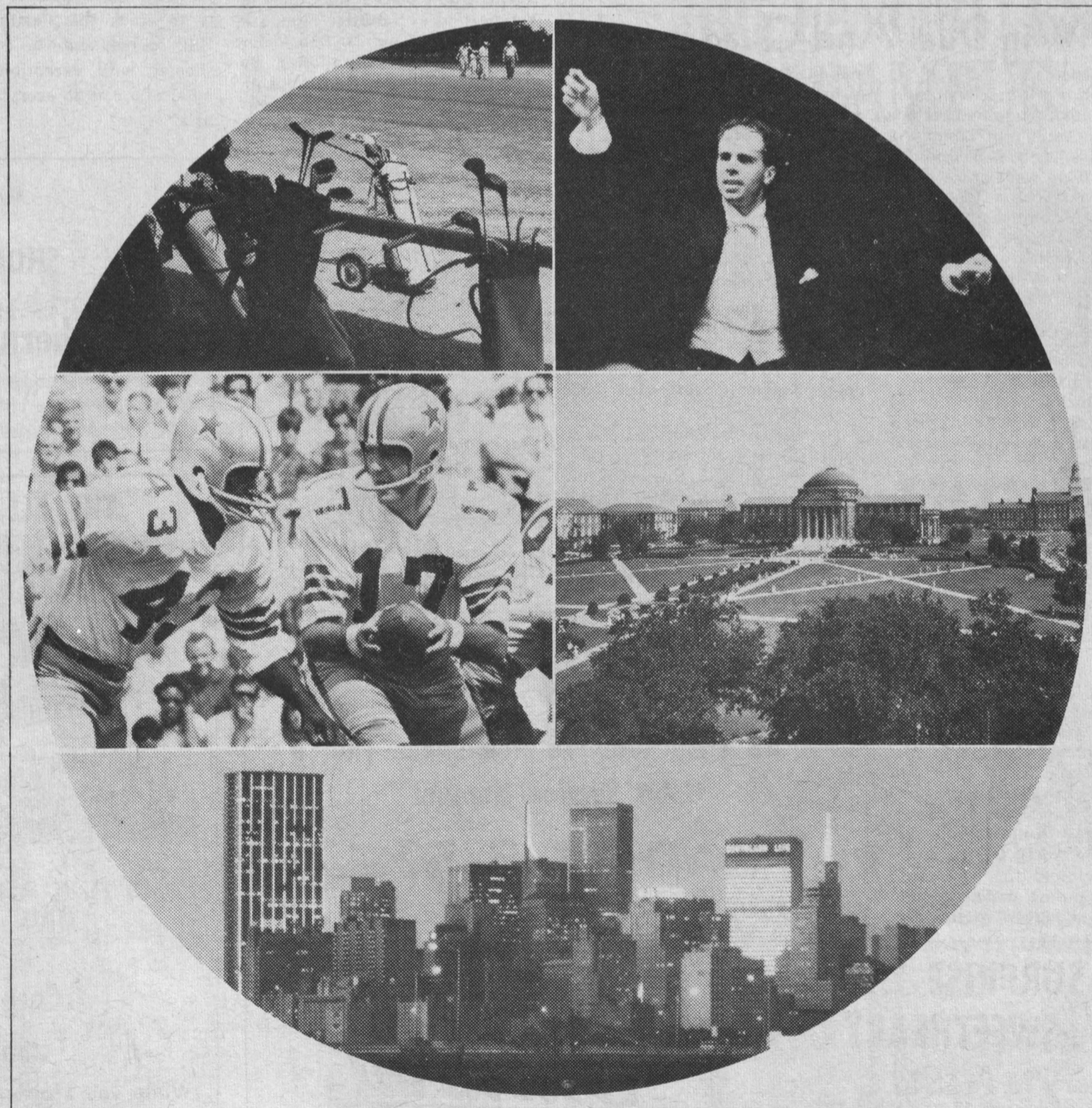
Dallas...home of LTV Aerospace

As one of the nation's social, cultural and educational capitals, Dallas offers its residents a clean, modern city, temperate climate, abundant housing and living costs substantially lower than most cities of comparable size. Dallas is also the home of LTV Aerospace Corporation, one of the city's largest industrial citizens and a major participant in the United States' defense efforts. Current programs include the Navy and Air Force A-7 Corsair II, the new low-level, close support light attack aircraft; SCOUT launch vehicle for



NASA, DOD and AEC; XC-142A, the world's most successful V/STOL; ADAM II, a future generation V/STOL and many others. LTV Aerospace programs... challenge the imagination of engineers and create diversified career positions. Ask your Placement Office, then see our representative when he visits your campus. Or write College Relations Office, P.O. Box 5907, Dallas, Texas 75222. An equal opportunity employer

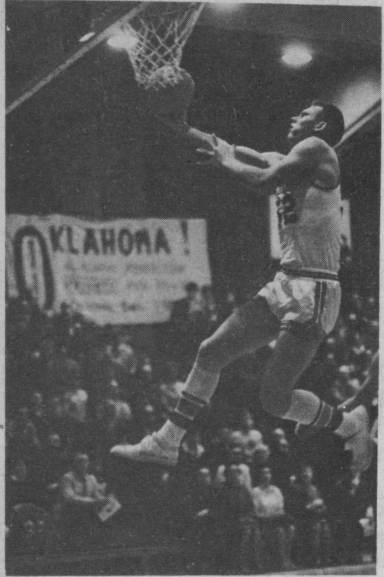
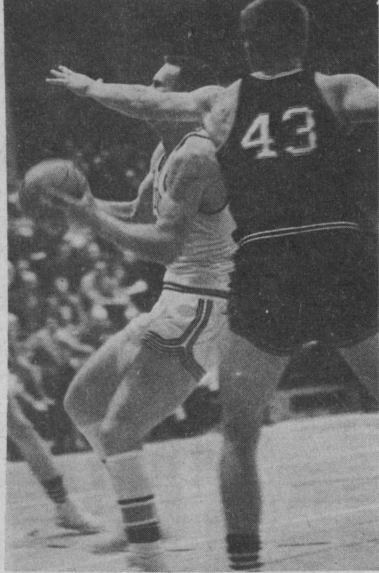
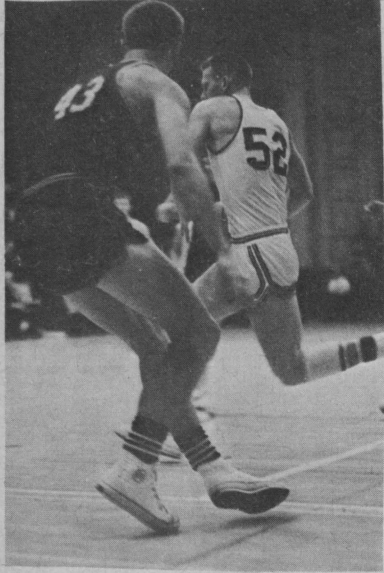
LTV AEROSPACE CORPORATION
DALLAS



MISSILES AND SPACE DIVISION ■ VOUGHT AERONAUTICS DIVISION ■ KENTRON HAWAII, LTD ■ RANGE SYSTEMS DIVISION

Campus Interviews

THURSDAY, FEBRUARY 9



DRIVING FOR THE BUCKET, forward Ron Waggoner makes his move (upper left) driving past SDS's Richard Larson (43) (upper right) to lay it up (lower left) and turns to watch ball about to fall through (lower right).

Weekend Surge Elevates Bison Into Second Place Behind Defeated Sioux

by Neil Thomas

The North Central Conference race took on a new look this past weekend as the Bison gunned down Augustana 88-62, Friday night and toppled South Dakota State University 96-74 Saturday night.

The two wins, coupled with Augustana's 81-76 surprise victory over previously unbeaten University of North Dakota vaulted the Bison into second place in the NCC, just one game back of UND.

The Bison, for the present time at least, must share second place spot with State College of Iowa. Both teams have identical 4-2 records as a result of the pair of Bison wins and SCI's 85-80 win over USD, despite Jack Theeler's 49 points for USD.

The Bison were led to victory by Gerry Suman and Ron Schlieman — the back-court duo scoring 96 points in the two game series.

Against Augustana, Schlieman scored a career high 28 points, followed by Suman with 22. Palma Chandler was the only other Bison in double figures with 13.

The Bison also reigned supreme in rebounding, holding a 63-37 advantage on the boards. Suman's 20 rebounds were the tops in that department for either team.

Gary Baack and John Eggers led the Vikings with 16 and 14 points respectively.

The Bison placed four men in double figures Saturday night led by Suman's 27 points. Bob Maier was next with 20 followed by Schlieman with 19. Ron Waggoner picked up 11 points and was the leading rebounder for the Bison with 13.

Vern Schoolmeester led the Jackrabbits with 21 points followed by John Thomas with 18 and Gene Zulk, who came off the bench to score 17.

The Bison have another crucial series this weekend when they travel to Morningside for a game Friday night and the University of South Dakota Saturday night.

The Bison defeated Morningside at home earlier in a tight 84-82 battle. The Chiefs, no stranger to Bison fans, are said to have the best guard combo in the league in Ray Lill and John Vermilyea. Vermilyea scored 35 points against the Bison; most of them coming on long jump shots.

The Bison will meet the Coyotes of USD for the first time this season Saturday night.

All-Conference forward Jack Theeler will be the man to watch in this one. Theeler has scored 48 and 49 points in two games this season.

The Coyotes have good height, led by 6' 9" center Mike Hyde, 6' 4" Theeler, 6' 6" forward Steve Stille and 6' 5" Skip Moehring.

Bob Brewster, Jim Christensen and Mel Durant have been sharing one guard spot. The other spot being manned by 5' 10" sophomore Art Gelow who appeared to be the sophomore most likely to crack the starting lineup. USD sources state he is "a great shooter with exceptional quickness, who can do everything with ball."

North Central Conference

	W	L	Pct
U. North Dakota	5	1	.83
N. Dakota State U.	4	2	.67
St. College Iowa	4	2	.67
U. South Dakota	3	2	.60
Augustana	3	4	.43
Morningside	2	5	.29
S. Dakota State U.	1	6	.14

Bison Win Dual And Quadrangular

by Noel Jordan

The Bison wrestling team picked up its fourth dual meet victory over the University of Minnesota Morris 24-3 here Wednesday night. The team went on to win a quadrangular meet at Dickinson State College Saturday, with a score of 86. Dickinson was second with 69 points.

In the meet with Morris, the Bison swept all the weight classes with the exception of the 167 pound class where Emory Knudson was decisioned 12-9 in a wild, free-scoring battle.

Coach Bucky Maughn noted that Jack Skjonsby and Herb Schmidt "had outstanding and exciting matches."

In the Dickinson Quadrangular, Captain John Hollman was upset by Dickinson's Willie Ressler after Hollman had collected his 13th and 14th straight victories in the morning, bringing his season record to 14-0 and setting a new North Dakota State University record.

Hollman suffered a pinched nerve and a hyperextended elbow in his second match of the day against his Black Hills State opponent. Hollman went on to pin him but suffered severe pain and had to quit the match with Ressler before it was over. Coach Maughn hopes Hollman will be ready for the North Central Conference meet and the Nationals.

The outstanding match of the afternoon was staged in the 191

pound class with Mike Ahneman, a new recruit from the Bison football team, decisioning his Black Hills State opponent.

Dick Ovsak, Bison 160 pounder, picked up his ninth straight win as he won all three of his matches.

Heavyweight Herb Schmidt won all three of his matches to bring his season record to 13-2.

Others who won all three matches were Knudson and Fred Schroeder. Larry Mollins won two matches, Ahneman, John Sem and John Kreamelmeyer each won one match.

The Bison wrestling team will return to NCC for the first time since December 3 this weekend when it has a dual meet with the University of South Dakota at Vermillion Friday and a dual with Morningside on Saturday at Brookings, S. D.

Rawlings & MacGregor

EMERY JOHNSON

WHOLESALE OF ATHLETIC EQUIPMENT

7 S. Broadway
235-5361

RIDE A

KONEN CAB

An Easy Way To Remember The Good Service Number

AD 57-3-57

SURPRISE YOUR SWEETHEART

- ☆ PLANTS
- ☆ CORSAGES
- ☆ BOUQUETS

Store: Broadway at Main

with a floral gift

Shotwell FLORAL CO.
Since 1888

Phone 235-5515

The Tailored Look Is "In"



TAMPICO \$175 WEDDING RING 100

Keepsake
REGISTERED DIAMOND RINGS

New, exciting designs . . . contemporary, classic. In every Keepsake Engagement Ring there is an eternal treasure—a perfect center diamond.

BUDGET TERMS

Wimmer's
610 Main Ave.
PARK AND SHOP

YOU WILL ENJOY SHOPPING OUR STORE

Northern School Supply Co.

NP Avenue and 8th Street
Fargo, N. Dak.

THE ALL NEW HIGHWAY HOST



Serving Better Food 24 Hours A Day

Carpeted Dining Room Ample Free Parking

While you are here why not fill up with Apco Super Auto blend gasoline and save 2c per gallon.

HIGHWAY HOST

3001 Main Avenue

Frosh Win String Increased To Nine

The Baby Bison picked up their eighth and ninth consecutive victories this past weekend at the expense of Kallod Carpet and the Jamestown College Junior Varsity.

The Frosh handled Kallod Carpet on Friday evening 83-77 to bring their season record to 8-1.

Freshman Coach Bud Belk cited Joe Roller for the fine, all-around performance he turned in to lead the frosh scoring with 23 points.

The Baby Bison used balanced scoring on Saturday evening as they beat the Jamestown J. V.'s 63-52 for their ninth win, pushing their record to 9-1.

Roller and Mitch Felchle led the Baby Bison in the scoring department with 13 and 12 points respectively.

John Buckhaus led Jamestown with 22 points.

Coach Belk praised Felchle and Roller for their fine defensive performances.

Belk also stated that the 19 team assists which the team had was a high for the year.

The Frosh's next game will be with the undefeated University of North Dakota Papooses at Grand Forks on February 18. It will be a preliminary to the Varsity game.

Last year the two freshman teams split their two game series, the Baby Bison winning a 64-63 verdict at home and losing at

UND 89-83.

Players on the Papoose team include Wally Koch, a 5' 8" guard who played on Mandan's State

Championship team last year; Evan Lips, a 5' 11" guard from Bismarck High and John Sandager, a 6' 6" forward from Fargo.

Intramurals Near Final Playoffs

The Interfraternity Council will give a trophy to the fraternity with the most points in intramurals. This will make it possible for a fraternity to win two trophies, the first place trophy from the IM department and the IFC trophy.

At the last meeting, discussion began on intramural volleyball play which will begin when basketball is completed.

Table tennis and billiards finals began this week with the standings as follows:

Table Tennis	
Kappa Psi	19
Churchill	18
Theta Chi	17
YMCA	17
Co-op	15

Billiards	
YMCA	23
SAE	18
Kappa Psi	11
Theta Chi	11

Bowling standings for the four leagues giving the top five places in each league are as follows:

Metropolitan		
W	L	
FFA 1	21	15
Vets 2	21	15
Churchill	20	16
Farmhouse II	19	17
SPD	18½	17½

Classic		
W	L	
Vets I	25	7
ATO II	18	14
Theta Chi	18	14
SN	17	15
MSA	17	11

Major		
W	L	
Co-op	23	17
Sig Chi	21½	14½
TKE	21	15
AGR II	20½	15½
Johnson	15	21

Masters		
W	L	
Kappa Psi	28	8
SAE	24½	11½
ATO	21	13
ASCE	21	15
Theta Chi	18	18

Teams in intramural basketball have been seeded into the finals on the basis of their bracket and record. Teams seeded in are all those in brackets 2, 5 and 8 and the top two teams in brackets 1, 3, 4, 6 and 7 of the following standings.

Bracket 1		
W	L	
Lettermen's Club	4	0
Sig Chi 2	3	1
Farmhouse 2	2	1
Kappa Psi	1	3
Reed 3	1	3
Johnson 1	0	4

Bracket 2		
W	L	
Co-op 1	4	0
APHA	3	1
AGR 1	2	2
Sig Nu	2	2
Churchill 2	1	3

Bracket 3		
W	L	
Johnson 2	4	1
Co-op 2	3	2
FFA	3	2
Reed 1	2	3
Theta Chi	2	3

Bracket 4		
W	L	
SAE 1	5	0
Johnson 3	3	2
Reed 2	3	2
AGR 2	2	3
Mar. St.	2	3
Kappa Psi 2	0	5

Bracket 5		
W	L	
Stock 2	4	1
Theta Chi 1	4	1
ATO 2	3	2
SPD	2	3
YMCA 1	2	3
TKE 1	0	5

Bracket 6		
W	L	
Stock 3	5	0
SAE 3	4	1
ATO	3	2
Co-op 3	1	4
Theta Chi 3	1	4

Bracket 7		
W	L	
ATO 1	4	1
Sig Chi 1	4	1
Wesley	3	2
Chem Club	1	4
Kappa Psi 3	1	4

Bracket 8		
W	L	
Churchill 1	4	1
SAE 2	4	1
TKE 2	3	2
Farmhouse 1	2	3
YMCA 3	1	4
ASCE	1	4

Neil Thomas - - -



Standings Could Have Shake-up

This weekend will be another big one in the North Central Conference basketball race. Five of the seven teams in the conference play games both Friday and Saturday nights. Only Augustana and South Dakota State have one game this weekend.

Last weekend's action saw the Bison move into a second place tie with State College of Iowa and gain a game on the frontrunning University of North Dakota Sioux who were stunned by fifth place Augustana Saturday night.

This weekend UND is at the University of South Dakota and the Bison are at Morningside on Friday night. On Saturday night the two teams will trade opponents.

A complete shakeup in the standings is possible with the six conference games being played. There are many possibilities for conference leader; four teams could conceivably hold the lead — the Sioux, Bison, SCI and USD.

The Bison must win both games to remain in the running for the showdown battle with the Sioux a week from Saturday at Grand Forks.

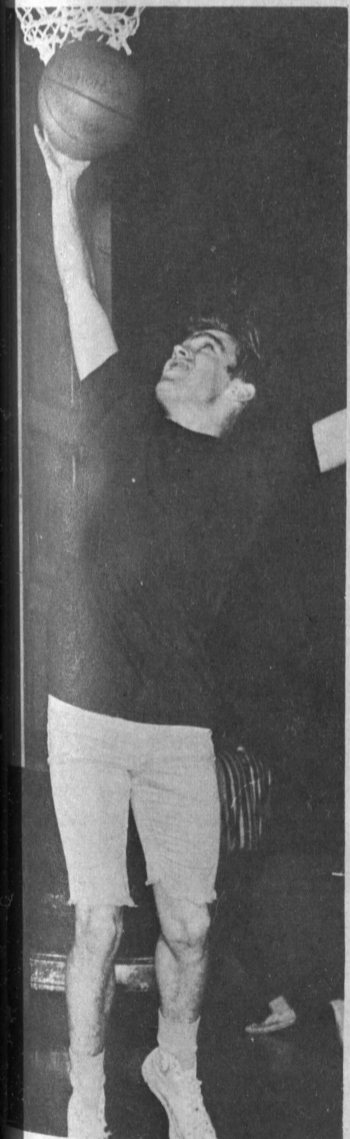
The Bison had two of their best games of the season here last weekend. It is hoped that this kind of a performance can carry over into the weekend engagements.

Although anything can happen, the Bison's most serious threat — and UND's for that matter — will come from USD. The Coyotes, behind Jack Theeler's hot hand, can give anybody a good game on a given night.

Theeler's latest antics were his 49 point scoring spree against SCI to tie a NCC record this past weekend. The scoring record has been getting kicked around by Theeler and Augustana's John Eggers. Theeler first broke the record of 47 set by SU's Marv Bachmier when he scored 48 earlier this season only to have it broken the next night by Eggers, who scored 49.

The Augustana Vikings did a lion's share of the work in evening up the conference race by beating the Sioux. It is not known at this time what the loss will do to the Sioux or what effect it will have on the rest of the teams in the conference.

You can be sure that it took a big psychological load from the shoulders of the other teams in the conference to see UND beaten at home, after winning 33 straight and conquering some big college foes there.



TOUGH ON THE BOARDS, Jim Drege pulls one down in this Co-op intramural action.

Sweetheart Will Be Chosen

One of the newest re-organized groups on campus, the Letterman's Club, has decided to select a Letterman's Sweetheart for the year.

All women's residence halls and sororities have been contacted by the club so that they may submit coeds to run for the position.

The winner will be selected by means of a contest. More information about the contest will be released by the Lettermen at a later date.

The Sweetheart will be selected March 4, the day of the home game between the Bison and the Sioux. She and the first and second runners-up will receive trophies at this time.

A traveling trophy will also be given at the game.

DR. HARLAN GEIGER
OPTOMETRIST
 CONTACT LENSES
 515 1st Ave. N. Ph. 235-1292

THE CROWN JEWELS

A DIAMOND is the Gift of Love:
 It is also an important investment.
 For the facts SEE US

605 N. P. Ave. Fargo, North Dakota

MEMBER AMERICAN GEM SOCIETY

VOTE FOR
NEW BLOOD

VOTE FOR
Marlow Nelson

BIG FAVORITES ON CAMPUS

BUY and WRITE

20 CHECKS FOR
\$250

Your Name Printed Free On Every Check

- ★ NO MINIMUM CHARGE
- ★ NO OTHER CHARGES

Freddy First

Sez
"NDSU STUDENTS ARE ALWAYS WELCOME"

NATIONAL BANK
 and Trust Company of Fargo

MEMBER F.D.I.C.

WEEKLY CALENDER OF EVENTS

THURSDAY, FEB. 9—

- 8:00 a.m. Extension Home Economics Staff Workshop — Prairie Room, Union
- 3:30 p.m. Cereal Technology Seminar: Mr. Matthew Lin, "Process for Peeling Wheat" — Room 203, Harris Hall Faculty Affairs Meeting — Room 102, Union
- 5:00 p.m. AWS Mtg. — Forum, Union
- 7:30 p.m. Rodeo Club Mtg. — Sheppard Arena
- 8:00 p.m. Dames Mtg. — Room 101, Union Seminar: "Evolution" — St. Paul's Student Center Little Country Theater Production: "Rally 'Round the Flag, Boys" — LCT

FRIDAY, FEB. 10—

- 8:00 a.m. Extension Home Economics Workshop — Town Hall, Union
- 12:00 noon IVC Faculty Prayer Mtg. — Room 101, Union
- 2:30 p.m. SAB TGIF Cafe — Bison Grill, Union
- 7:30 p.m. Free Faculty Staff Recreation Night — Games Area, Union Lutheran Student Congregation Pizza Party — LSC

SATURDAY, FEB. 11—

- 7:30 a.m. FCPD Test — Room 227, Union SAB Leadership Training Conference — Room 101, 102, 203, 233, Forum, Union
- 7:30 p.m. SAB Movie: "Psycho" — Prairie Room, Union
- 8:00 p.m. Basketball: Newman Foundation vs. KQWB Crazy Cagers — Shanley High School Gym

SUNDAY, FEB. 12—

- 9:30 a.m. Wesley Foundation Student Forum — Wesley Foundation
- 10:00 a.m. Unitarian Fellowship — Town Hall, Union
- 1:00 p.m. Farmhouse Dedication Dinner — Town Hall, Union
- 4:00 p.m. SAB Movie: "Psycho" — Ballroom, Union Fargo-Moorhead Symphony Orchestra Concert — Festival Hall
- 5:00 p.m. Gamma Delta Mtg. — 1258 Broadway
- 5:30 p.m. UCCF - Wesley Foundation Sunday Evening Program — Wesley Foundation Pizza Supper — St. Paul's Student Center
- 7:00 p.m. SAB Cinema 66-67: "Winter Light" — Ballroom, Union
- 9:00 p.m. Lutheran Student Congregation Mtg. — Town Hall, Union

MONDAY, FEB. 13—

- 8:00 a.m. Veterinary Short Course — Prairie Room, Union
- 12:00 noon Veterinary Short Course Luncheon — Dacotah Inn, Union
- 5:00 p.m. Student Election Board — Room 203, 233, Union

TUESDAY, FEB. 14—

- 9:00 a.m. Veterinary Short Course — 102, Prairie Room, Dacotah Inn, Union Student Affairs Mtg. — Board Room, Union
- 12:00 noon LSC Pastors Conference Luncheon — Ballroom, Union
- 8:00 p.m. Housemothers Club Mtg. — Room 102, Union Young Americans Concert — Festival Hall

Three Enter Vice Presidential Race

(Continued from Page 1)

lobbying in support of the betterment of NDSU.

He also concerns himself with the role of SBVP. "The status and scope of SBVP is presently rather unclear. The responsibility of the next vice-president is to make that office a responsible position, and make it more than a place for SBP's "understudy."

Director Of Counseling Is Named

LaVerne W. Nelson has been named director of the counseling center by the State Board of Higher Education, according to President H. R. Albrecht.

Nelson has served as acting director of the center since last July 1, when he replaced David Young, now dean of students.

Before coming to North Dakota State University, Nelson served as supervisor of the study skills center at the University of Wyoming.

Kapaun's views on issues are much the same as Buchanan's, except that he is interested in investigating Student Senate's constitution and possibly making changes in the present form of government.

He also advocates further research, and action concerning rules and regulations changes, and feels that "by holding senate meetings at places where interest groups can view them, students will become better informed as to what their student government is doing."

Teacher evaluation and class registration are areas of concern

mentioned by Anderson. He states "The office of SBVP is largely administrative in its nature; therefore, I would like to work on improving and getting the teacher evaluation program off the ground."

Anderson ground."

"Also, this campus has lacked a sound, broad, leadership program, one that would allow more students to participate, and would come under the office of vice president."

"A Good Place To Meet - A Good Place To Eat"
FOR FAST SERVICE AND TASTY FOOD—IT'S THE
S. U. HASTY TASTY
Across from the Campus
AMPLE PARKING SPACE BOOTHS FOR YOUR CONVENIENCE

Starts Today



A Carlo Ponti Production

Michelangelo Antonioni's first English language film.

"BEST FILM OF 1966!"
National Society of Film Critics*



Antonioni's camera never flinches.
At love without meaning.
At murder without guilt.
At the dazzle and the madness of London today.

Vanessa Redgrave

BLOW-UP

co-starring
David Hemmings
Sarah Miles

COLOR

A Premier Productions Co., Inc. Release

Suggested for mature audiences.



GLENDABROWN

1 Year Senate

A

"REVISIONIST"

For Progress In Student Government

VOTE FOR

2 Year Senators

ROGER BEAVER

and

RODNEY LINK

MILITARY BALL

MARCH 17, 1967

8:00 - 12:00

Theme

"Fly Me To The Moon"

Tickets May Be Purchased From
Arnold Air Society, AUSA And All
Advanced Cadets

\$4.00 PER COUPLE

FARGO THEATRE

THAT "CAT BALLOU" GIRL Really Howls In . . .

SHOWS DAILY From 1:15 p.m.

JANE FONDA

Dean Jones Jason Robards

It's Naughty!

It's Risque!

It's All in Color!

Any Wednesday

First Fargo - Moorhead Showing!

GRAND THEATRE

A GREAT CAST!

BATTLE OF THE BULGE

— In Color —

EVENINGS 7:00 - 9:30 P.M.
SATURDAY MATINEE 2:00 P.M.
SUNDAY AT 2:00 - 4:30 - 7:00 - 9:30
A GREAT MOVIE!



SAB PRESENTS: Cinema 66-67

WINTER LIGHT

A Swedish Film Directed by Bergman

Sunday, Feb. 12

Ballroom, Memorial Union 7:30 p.m.

Admission: 50c