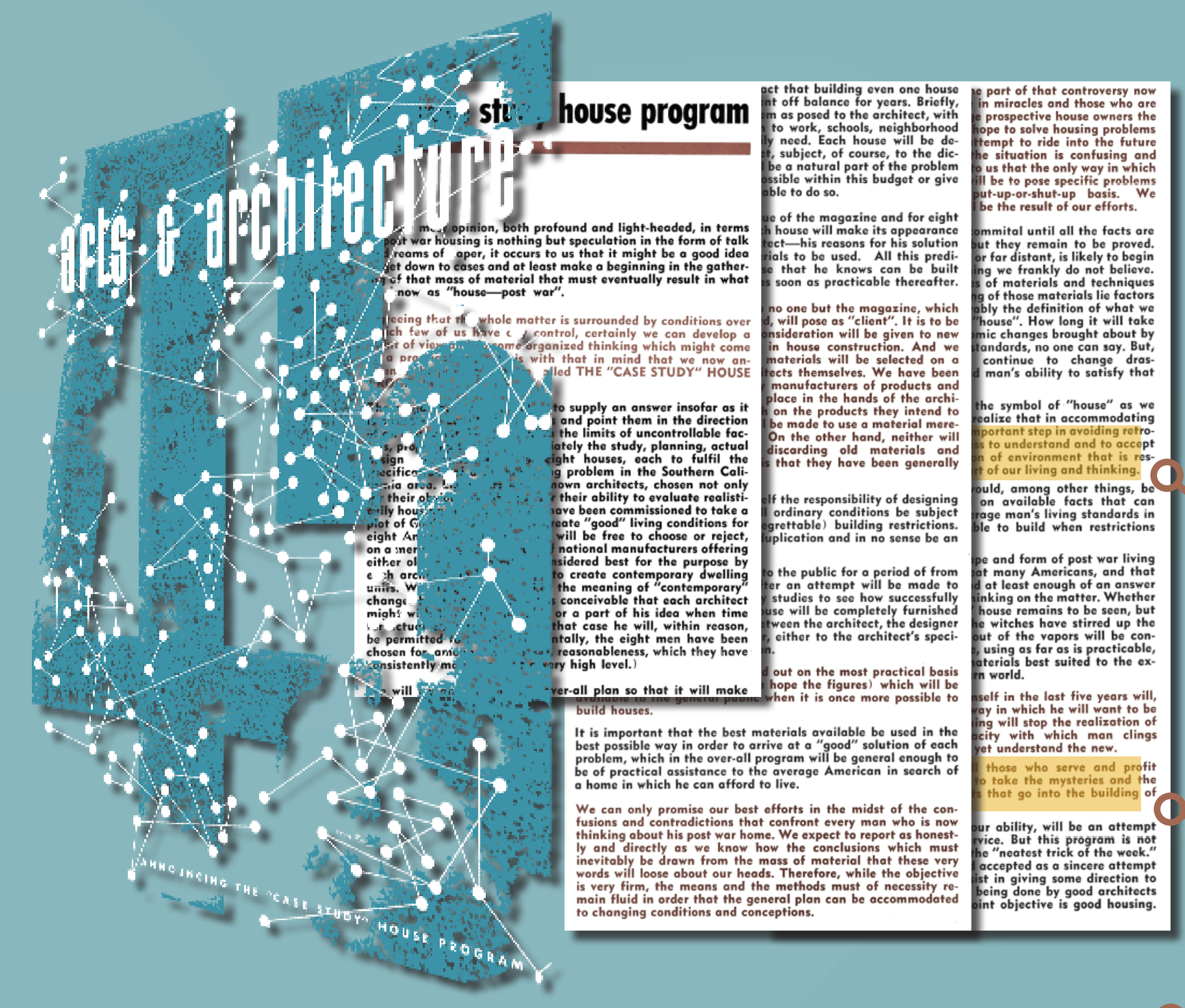


# Theater of life

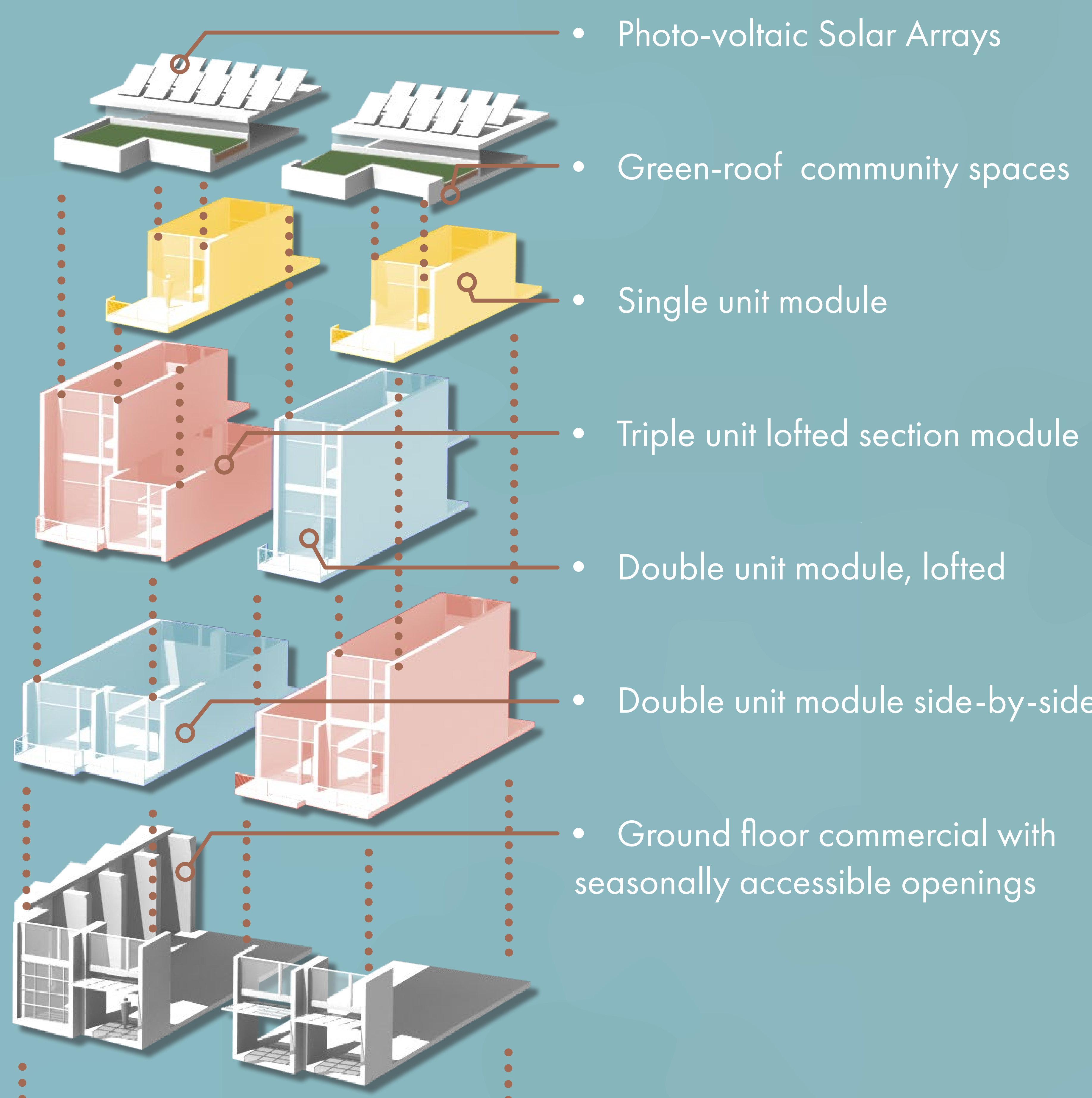
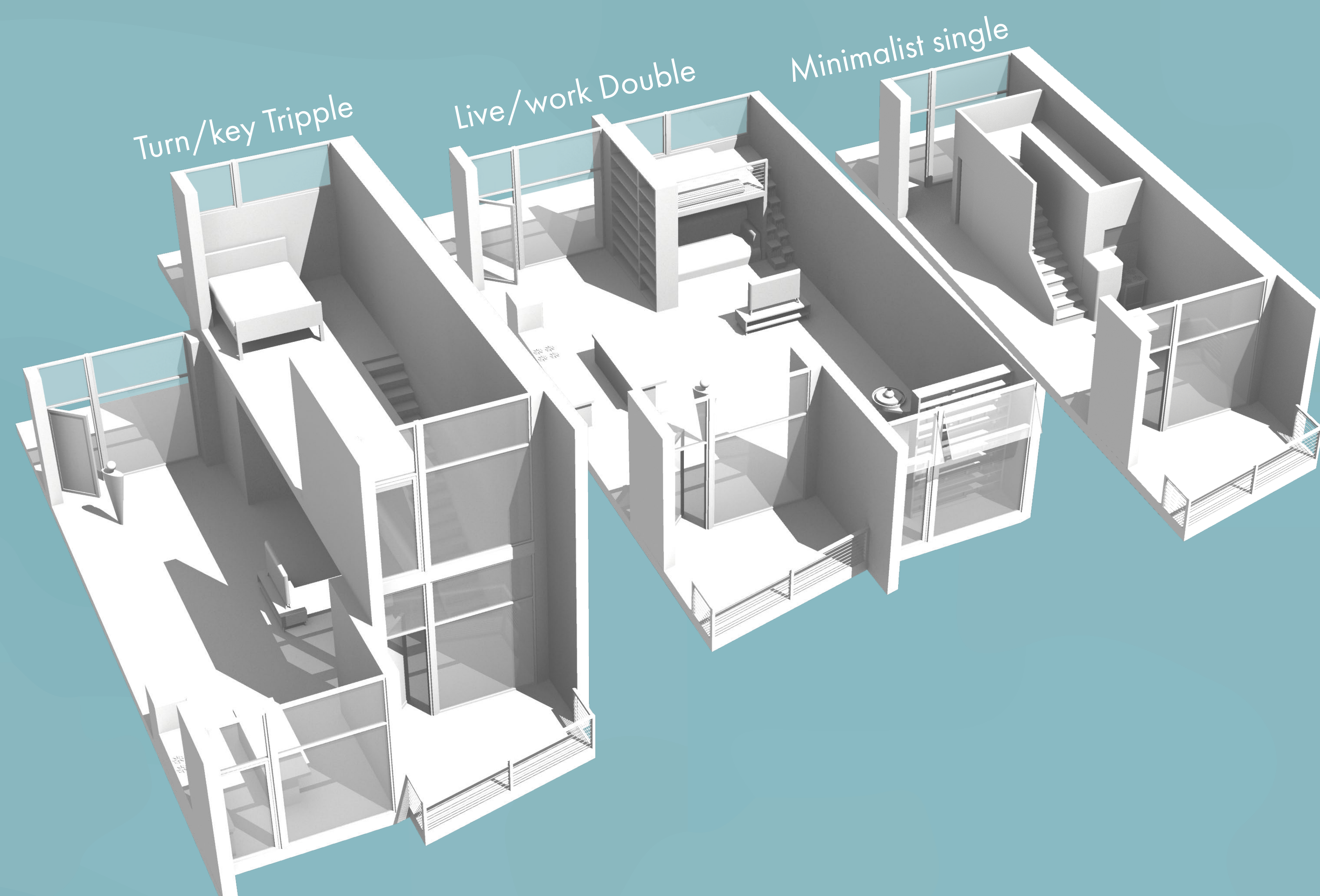
Participatory design as a feature for intentional adaptation to a diverse set of lifestyles.

In the immediate postwar boom, housing was a critical issue. There were many explorations of affordable housing concepts including the already established Sears catalogue house and Frank Lloyd Wright's Usonia. Catalogue houses managed to deliver houses affordably but lacked significant customization and personalization, producing 'cookie-cutter' housing. Usonian homes provided tailor homes but routinely cost two to three times original estimates. The Case Study Houses mostly managed to achieve affordability and personalized homes through clever and intuitive use of new materials and construction methods. However, each home still required an architect to deliver an expression of the client's character, limiting it's mass market potential. With the emergence of DIY/maker movements, spacial expression is even more sought after than in past iterations of housing. Theater of Life seeks to expand the potential of housing in a dense urban environment with blank canvas units for custom turn-key renovators to thrifty minimalists to live-work artisans.



It becomes the obligation of all those who serve and profit through man's wish to live well, to take the mysteries and the black magic out of the hard facts that go into the building of "house".

Perhaps we will cling longest to the symbol of "house" as we have known it, or perhaps we will realize that in accommodating ourselves to a new world the most important step in avoiding retrogression into the old, is a willingness to understand and to accept contemporary ideas in the creation of environment that is responsible for shaping the largest part of our living and thinking.



- Photo-voltaic Solar Arrays
- Green-roof community spaces
- Single unit module
- Triple unit lofted section module
- Double unit module, lofted
- Double unit module side-by-side
- Ground floor commercial with seasonally accessible openings



"...we only want for the most simple and modest of dwellings, to recover a quality in accordance with its mission: to be an Elemental piece of the city and the stage of daily life."

Rodrigo Perez de Arce,  
Architect and professor at UC School of Architecture



Hiawatha Bike Trail

Interstate 35W

S. Washington Ave

Cedar Ave

Riverside Ave

Light Rail-Green Line  
Future Hiawatha bike trail extension

- ① US Bank Stadium
- ② Cedar Riverside Station (Blue Line)
- ③ Riverside Plaza Housing Development
- ④ West Bank Station (Green Line)

