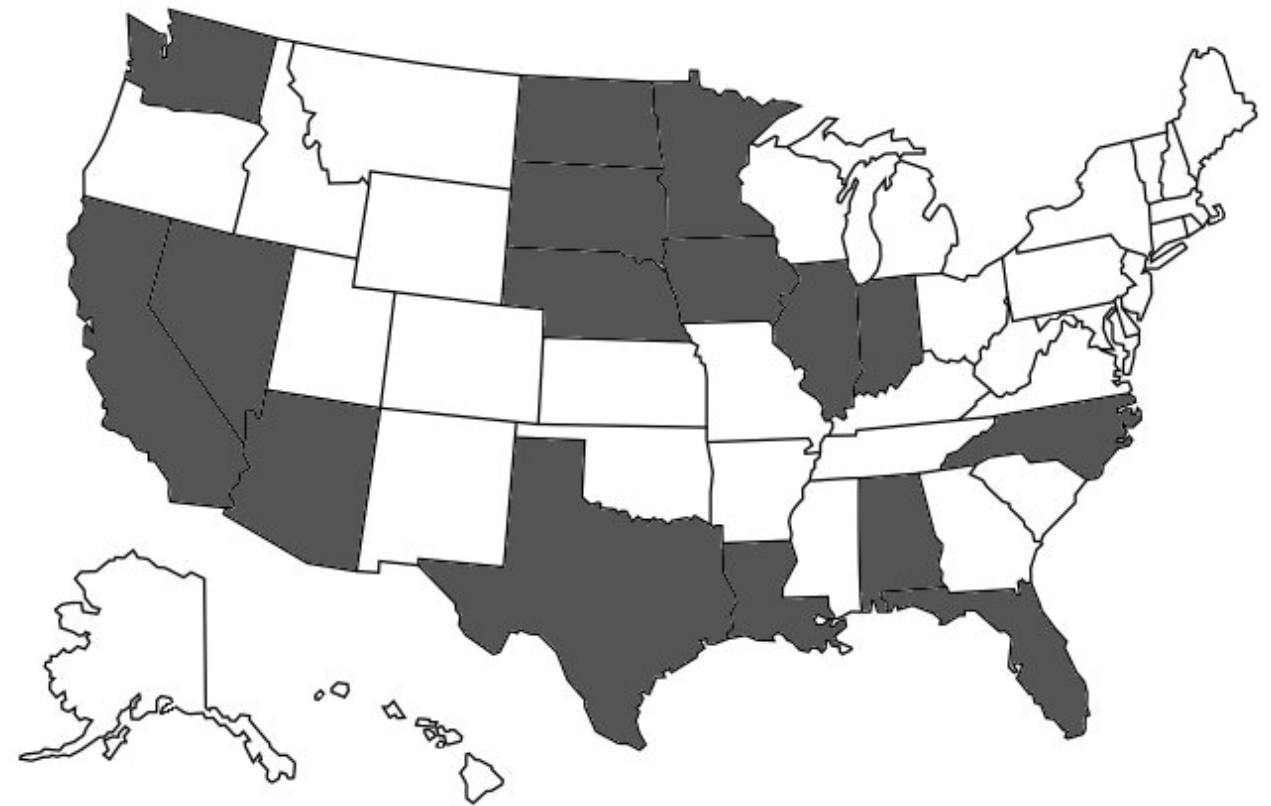


# ***NDSU SOFTBALL COMPLEX RENOVATION: ENHANCING THE BALLPARK EXPERIENCE***



***HALEY HEINTZMAN***

# WHY THIS PROJECT?





***HOW CAN I IMPROVE THE BALLPARK  
EXPERIENCE FOR ALL USERS?***



# ***HISTORY OF SITE***



# ***CURRENT SITE***



# ***GOALS***

- SPRING SOFTBALL VS. ND CLIMATE***
- ALL-IN-ONE DESIGN***
- CREATE A PLACE WHERE PEOPLE WANT TO GO***
- PROMOTE THE SPORT, SCHOOL***
- RECRUITING TOOL***
- FOR THE STUDENT ATHLETES***



# RESEARCH METHODS

**- CASE STUDIES**

**- HISTORICAL RESEARCH**

**- PERSONAL INTERVIEWS**

**- PERSONAL EXPERIENCES**

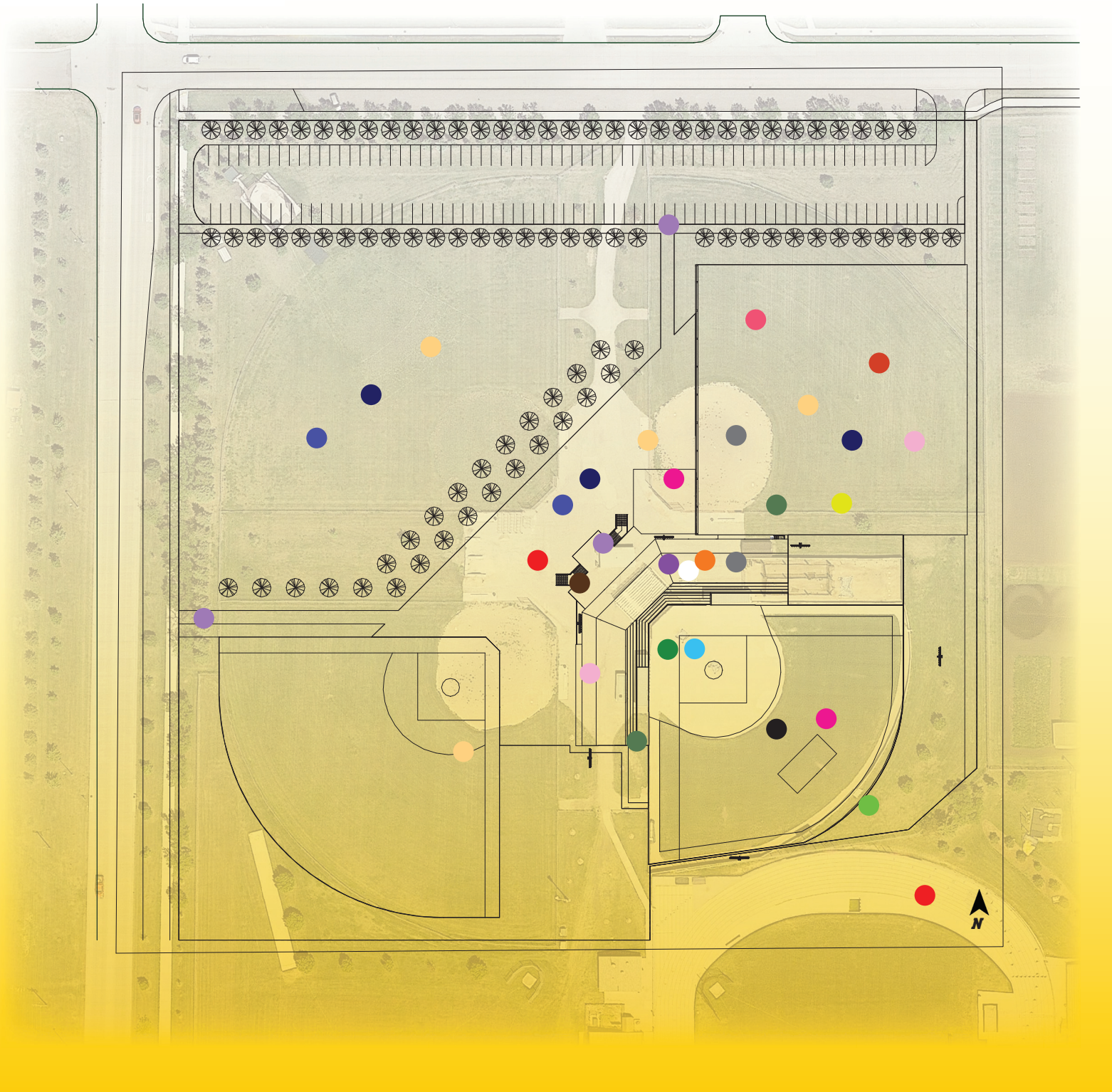


	fueling stations for the athletes who use the facility daily.	right food and drink for the athletes who are working hard every day to improve themselves. They need proper fuel to make them more focused, feel better and healthier, and help physical and mental performance.	for this facility. I will also need to make a map diagram to show how access to these elements will be addressed.	
Supportive equipment	A lot of supportive equipment comes into the facility after design is done, but it is important to plan ahead and design for	Having supportive equipment will physically make experiences better for all users.	I will do case studies on all of the proper and best equipment that teams/media/facilities people need and will benefit from having. I could also make a diagram showing what is needed/recommended.	
Supportive Facility	It is possible to create a supportive facility by making sure that all of the best performance increasing features are there for the players, coaches and staff. This includes making sure that there is overall organization to the whole complex.	Supportive facility = happy facility. This will make experiences better for everyone all around by decreasing stressors and	Case Studies – study plans of other facilities to see what their facilities have that help them. I will study codes on accessibility and public facility design. I can either make a chart or an annotated diagram of different features that can be implemented in the design to make better supportive facilities for all users.	
Field Conditions	One way to design to help improve field conditions is to make sure to include proper space in the program for field maintenance crews to keep the field under the best possible conditions. It is also important to research the different types of field surfaces and then make a	This will improve field experience for players and coaches immensely. Having good field conditions makes everything easier, better, and more importantly, safer for everyone. If players and coaches are safe and happy, they can put on a better display for all fans and staff as well.	I will need to do research on how to properly maintain a softball field and what is necessary to provide the best playing conditions for the athletes. I will also research different types of field surfaces to determine the best type for this environment, which will lead to improving overall experience for the field surface users.	



# ELEMENTS

-  **AESTHETICS**  
OVERALL BUILDING LOOK, SURROUNDING SCENERY, VIEWS, BUILDING DETAILS
-  **MEMORABLE EVENTS**  
CLOSE GAMES, UNIQUE SPACES, ART, BRANDING, DETAILING WHAT WILL BRING PEOPLE BACK TO THE SPACE
-  **STRESS**  
MINIMIZING STRESS FOR ALL USERS - ON FIELD, IN PUBLIC AREAS, ACCESS TO THE FACILITY AND THROUGHOUT IT
-  **EXCITEMENT**  
ENHANCING EXCITING MOMENTS THROUGHOUT FACILITY ON GAMEDAYS, AS WELL AS YEAR ROUND FOR THOSE USERS. WINS, SPECIAL EVENTS
-  **FOCUS**  
ALLOWING APPROPRIATE AMOUNTS OF FOCUS FOR PLAYERS ON FIELD OR AT PRACTICE, COACHES/STAFF WHILE WORKING, FANS WATCHING GAMES
-  **DISTRACTION**  
ADDRESSES GOOD AND BAD DISTRACTIONS FOR ALL USERS. HOW TO MINIMIZE BAD DISTRACTIONS AND INFLUENCE GOOD DISTRACTIONS
-  **INSPIRATION**  
ABILITY TO INSPIRE ALL USERS. PLAYERS, COACHES, AND STAFF DAILY. INSPIRE FANS ON GAMEDAYS AND AT SPECIAL EVENTS
-  **SUPPORTIVE EQUIPMENT**  
INCLUDES PROPER EQUIPMENT TO ASSIST ATHLETES ON IMPROVING THEIR PERFORMANCE. ALSO FOR STAFF ASSISTING IN GAMEDAY PRODUCTION
-  **SUPPORTIVE FACILITIES**  
HAVING THE PROPER FACILITY NEEDS FOR ALL TYPES OF EVENTS THAT WILL BE HELD THERE - WITH MAXIMUM EFFICIENCY
-  **RELAXATION**  
ABILITY FOR ALL USERS TO FIND RELAXATION DURING THEIR TIME AT THE FACILITY. FANS IN PUBLIC AREAS, PLAYERS IN LOCKER ROOMS AND ON FIELD
-  **MOTIVATION**  
PRODUCES MOTIVATION FOR ALL USERS. IMPORTANT IN PRIVATE TEAM AREAS, IN PRACTICE FACILITY, AND ON FIELD
-  **COPING**  
ALLOWS PROPER SPACES FOR USERS TO COPE WHEN DEALING WITH DIFFICULT SITUATIONS, SUCH AS LOSING GAMES, NOT PLAYING WELL, DAILY ISSUES
-  **ACCESS**  
WELL-PLANNED ACCESS ROUTES FOR ALL TYPES OF USERS. FROM GETTING TO THE SITE, TO MOVING THROUGHOUT THE CONCOURSE AND TO SEATS IN STANDS
-  **THERMAL COMFORT**  
ADDRESSES CLIMATE CONDITIONS FOR NORTH DAKOTA. PROPER BARRIERS AND PROTECTION TO KEEP USERS COMFORTABLE. INDOOR FACILITY
-  **VISUAL COMFORT**  
PROPER LIGHTING AND SITE LINES DURING GAMES, PRACTICES, EVENTS AND AROUND THE WHOLE FACILITY
-  **ACOUSTICS**  
ADDRESSES PROPER ACOUSTIC LEVELS THROUGHOUT THE FACILITY. GAME DAY SPEAKERS, PROPER ACOUSTICS IN PRACTICE FACILITY
-  **FREE MOVEMENT**  
ALLOWS FOR FREE MOVEMENT FOR ALL USERS AT FACILITY, WHILE ALSO CONSIDERING SECURITY AND PUBLIC VS. PRIVATE AREAS
-  **PHYSICAL COMFORT**  
CREATES OVERALL PHYSICAL COMFORT WHILE SPENDING TIME IN THE FACILITY FOR ALL USERS - WILL BRING PEOPLE BACK IF GOOD
-  **FOOD & DRINK**  
HAVING PROPER SPACES AND FACILITIES TO PROVIDE CONCESSIONS ON GAMEDAYS AND FOR EVENTS. FUELING THE ATHLETES DAILY
-  **FIELD CONDITIONS**  
PROPER FIELD CONDITIONS ARE NECESSARY TO KEEP FAIRNESS OF GAME PLAY. ABILITY TO PLAY IN DIFFERENT WEATHER CONDITIONS



***AESTHETICS***

***MEMORABLE EVENTS***

***STRESS***

***EXCITEMENT***





**AESTHETICS**

OVERALL BUILDING LOOK, SURROUNDING SCENERY, VIEWS, BUILDING DETAILS

**MEMORABLE EVENTS**

CLOSE GAMES, UNIQUE SPACES, ART, BRANDING, DETAILING WHAT WILL BRING PEOPLE BACK TO THE SPACE

**STRESS**

MINIMIZING STRESS FOR ALL USERS - ON FIELD, IN PUBLIC AREAS, ACCESS TO THE FACILITY AND THROUGHOUT IT

**EXCITEMENT**

ENHANCING EXCITING MOMENTS THROUGHOUT FACILITY ON GAMEDAYS, AS WELL AS YEAR ROUND FOR THOSE USERS. WINS, SPECIAL EVENTS

**FOCUS**

ALLOWING APPROPRIATE AMOUNTS OF FOCUS FOR PLAYERS ON FIELD OR AT PRACTICE, COACHES/STAFF WHILE WORKING, FANS WATCHING GAMES

**DISTRACTION**

ADDRESSES GOOD AND BAD DISTRACTIONS FOR ALL USERS. HOW TO MINIMIZE BAD DISTRACTIONS AND INFLUENCE GOOD DISTRACTIONS

**INSPIRATION**

ABILITY TO INSPIRE ALL USERS. PLAYERS, COACHES, AND STAFF DAILY. INSPIRE FANS ON GAMEDAYS AND AT SPECIAL EVENTS

**SUPPORTIVE EQUIPMENT**

INCLUDES PROPER EQUIPMENT TO ASSIST ATHLETES ON IMPROVING THEIR PERFORMANCE. ALSO FOR STAFF ASSISTING IN GAMEDAY PRODUCTION

**SUPPORTIVE FACILITIES**

HAVING THE PROPER FACILITY NEEDS FOR ALL TYPES OF EVENTS THAT WILL BE HELD THERE - WITH MAXIMUM EFFICIENCY

**RELAXATION**

ABILITY FOR ALL USERS TO FIND RELAXATION DURING THEIR TIME AT THE FACILITY. FANS IN PUBLIC AREAS, PLAYERS IN LOCKER ROOMS AND ON FIELD

**MOTIVATION**

PRODUCES MOTIVATION FOR ALL USERS. IMPORTANT IN PRIVATE TEAM AREAS, IN PRACTICE FACILITY, AND ON FIELD

**COPING**

ALLOWS PROPER SPACES FOR USERS TO COPE WHEN DEALING WITH DIFFICULT SITUATIONS, SUCH AS LOSING GAMES, NOT PLAYING WELL, DAILY ISSUES

**ACCESS**

WELL-PLANNED ACCESS ROUTES FOR ALL TYPES OF USERS. FROM GETTING TO THE SITE, TO MOVING THROUGHOUT THE CONCOURSE AND TO SEATS IN STANDS

**THERMAL COMFORT**

ADDRESSES CLIMATE CONDITIONS FOR NORTH DAKOTA. PROPER BARRIERS AND PROTECTION TO KEEP USERS COMFORTABLE. INDOOR FACILITY

**VISUAL COMFORT**

PROPER LIGHTING AND SITE LINES DURING GAMES, PRACTICES, EVENTS AND AROUND THE WHOLE FACILITY

**ACOUSTICS**

ADDRESSES PROPER ACOUSTIC LEVELS THROUGHOUT THE FACILITY. GAME DAY SPEAKERS, PROPER ACOUSTICS IN PRACTICE FACILITY

**FREE MOVEMENT**

ALLOWS FOR FREE MOVEMENT FOR ALL USERS AT FACILITY, WHILE ALSO CONSIDERING SECURITY AND PUBLIC VS. PRIVATE AREAS

**PHYSICAL COMFORT**

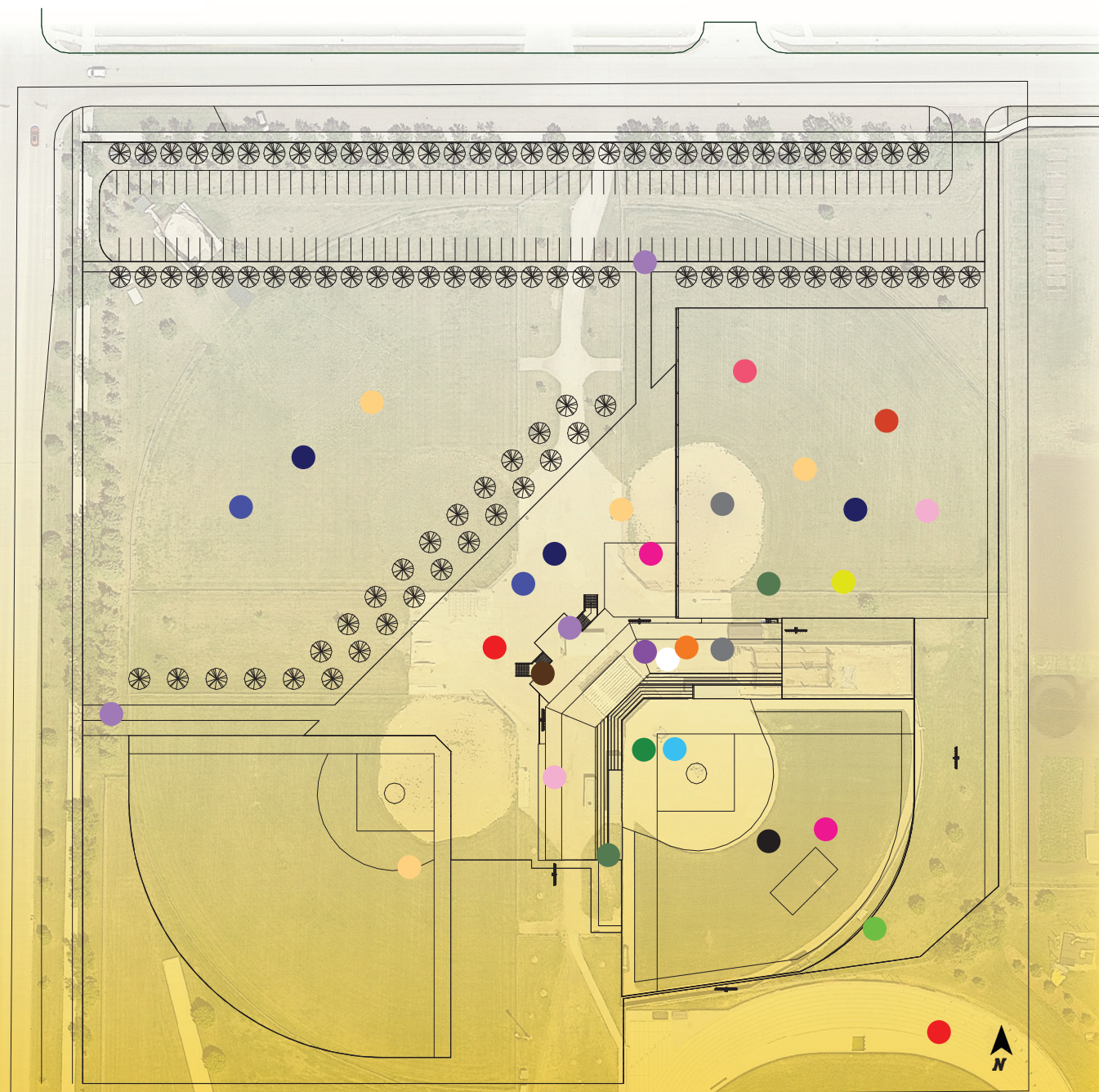
CREATES OVERALL PHYSICAL COMFORT WHILE SPENDING TIME IN THE FACILITY FOR ALL USERS - WILL BRING PEOPLE BACK IF GOOD

**FOOD & DRINK**

HAVING PROPER SPACES AND FACILITIES TO PROVIDE CONCESSIONS ON GAMEDAYS AND FOR EVENTS. FUELING THE ATHLETES DAILY

**FIELD CONDITIONS**

PROPER FIELD CONDITIONS ARE NECESSARY TO KEEP FAIRNESS OF GAME PLAY. ABILITY TO PLAY IN DIFFERENT WEATHER CONDITIONS





***FOCUS***

***DISTRACTION***



***INSPIRATION***

***MOTIVATION***



**AESTHETICS**

OVERALL BUILDING LOOK, SURROUNDING SCENERY, VIEWS, BUILDING DETAILS

**MEMORABLE EVENTS**

CLOSE GAMES, UNIQUE SPACES, ART, BRANDING, DETAILING WHAT WILL BRING PEOPLE BACK TO THE SPACE

**STRESS**

MINIMIZING STRESS FOR ALL USERS - ON FIELD, IN PUBLIC AREAS, ACCESS TO THE FACILITY AND THROUGHOUT IT

**EXCITEMENT**

ENHANCING EXCITING MOMENTS THROUGHOUT FACILITY ON GAMEDAYS, AS WELL AS YEAR ROUND FOR THOSE USERS. WINS, SPECIAL EVENTS

**FOCUS**

ALLOWING APPROPRIATE AMOUNTS OF FOCUS FOR PLAYERS ON FIELD OR AT PRACTICE, COACHES/STAFF WHILE WORKING, FANS WATCHING GAMES

**DISTRACTION**

ADDRESSES GOOD AND BAD DISTRACTIONS FOR ALL USERS. HOW TO MINIMIZE BAD DISTRACTIONS AND INFLUENCE GOOD DISTRACTIONS

**INSPIRATION**

ABILITY TO INSPIRE ALL USERS. PLAYERS, COACHES, AND STAFF DAILY. INSPIRE FANS ON GAMEDAYS AND AT SPECIAL EVENTS

**SUPPORTIVE EQUIPMENT**

INCLUDES PROPER EQUIPMENT TO ASSIST ATHLETES ON IMPROVING THEIR PERFORMANCE. ALSO FOR STAFF ASSISTING IN GAMEDAY PRODUCTION

**SUPPORTIVE FACILITIES**

HAVING THE PROPER FACILITY NEEDS FOR ALL TYPES OF EVENTS THAT WILL BE HELD THERE - WITH MAXIMUM EFFICIENCY

**RELAXATION**

ABILITY FOR ALL USERS TO FIND RELAXATION DURING THEIR TIME AT THE FACILITY. FANS IN PUBLIC AREAS, PLAYERS IN LOCKER ROOMS AND ON FIELD

**MOTIVATION**

PRODUCES MOTIVATION FOR ALL USERS. IMPORTANT IN PRIVATE TEAM AREAS, IN PRACTICE FACILITY, AND ON FIELD

**COPING**

ALLOWS PROPER SPACES FOR USERS TO COPE WHEN DEALING WITH DIFFICULT SITUATIONS, SUCH AS LOSING GAMES, NOT PLAYING WELL, DAILY ISSUES

**ACCESS**

WELL-PLANNED ACCESS ROUTES FOR ALL TYPES OF USERS. FROM GETTING TO THE SITE, TO MOVING THROUGHOUT THE CONCOURSE AND TO SEATS IN STANDS

**THERMAL COMFORT**

ADDRESSES CLIMATE CONDITIONS FOR NORTH DAKOTA. PROPER BARRIERS AND PROTECTION TO KEEP USERS COMFORTABLE. INDOOR FACILITY

**VISUAL COMFORT**

PROPER LIGHTING AND SITE LINES DURING GAMES, PRACTICES, EVENTS AND AROUND THE WHOLE FACILITY

**ACOUSTICS**

ADDRESSES PROPER ACOUSTIC LEVELS THROUGHOUT THE FACILITY. GAME DAY SPEAKERS, PROPER ACOUSTICS IN PRACTICE FACILITY

**FREE MOVEMENT**

ALLOWS FOR FREE MOVEMENT FOR ALL USERS AT FACILITY, WHILE ALSO CONSIDERING SECURITY AND PUBLIC VS. PRIVATE AREAS

**PHYSICAL COMFORT**

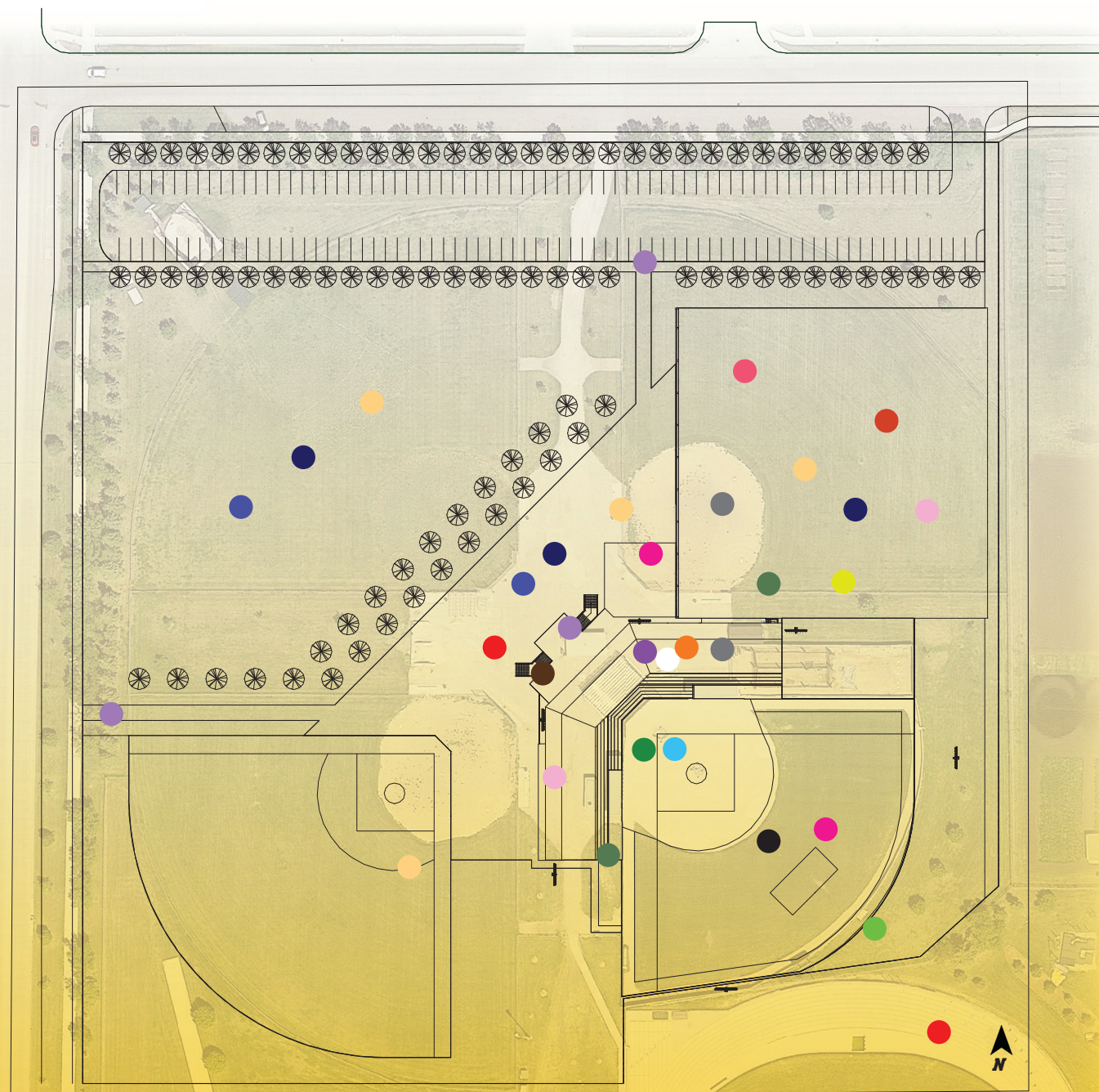
CREATES OVERALL PHYSICAL COMFORT WHILE SPENDING TIME IN THE FACILITY FOR ALL USERS - WILL BRING PEOPLE BACK IF GOOD

**FOOD & DRINK**

HAVING PROPER SPACES AND FACILITIES TO PROVIDE CONCESSIONS ON GAMEDAYS AND FOR EVENTS. FUELING THE ATHLETES DAILY

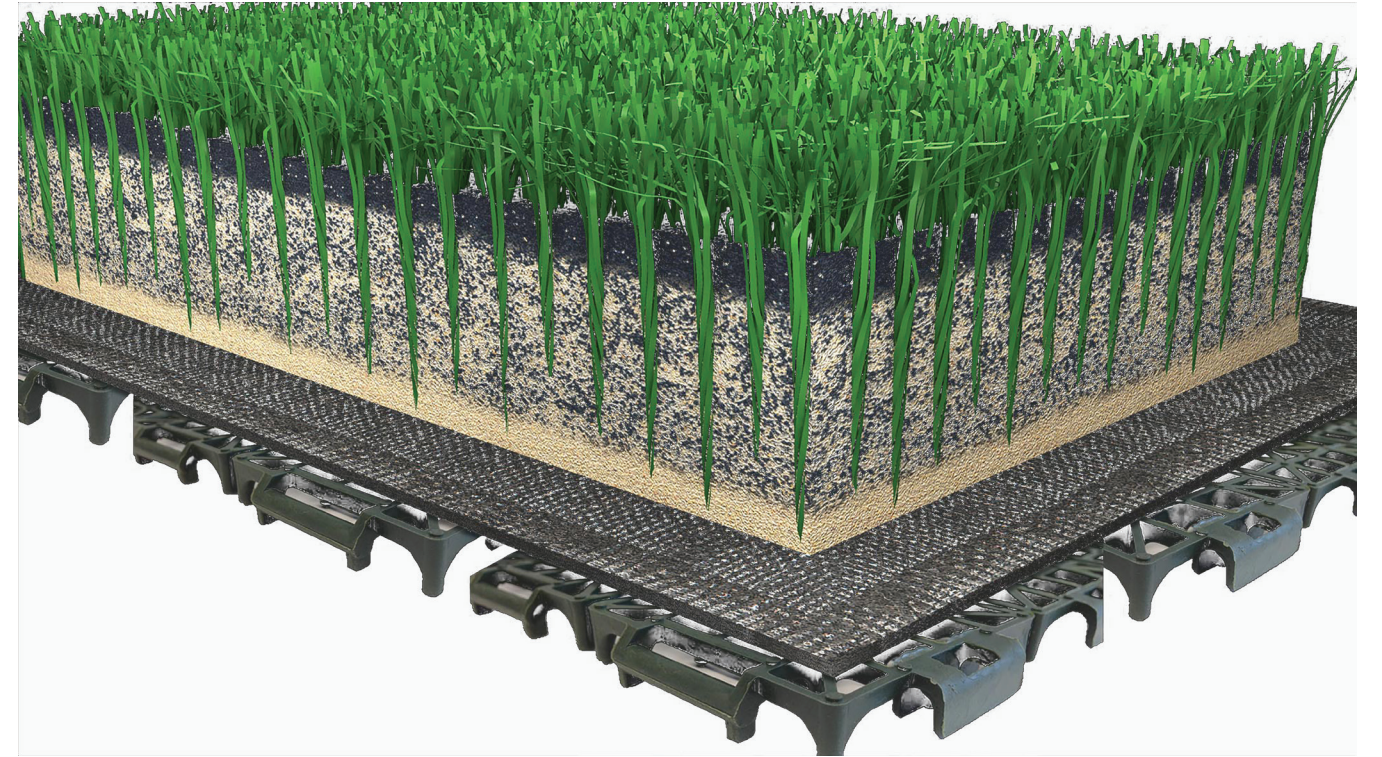
**FIELD CONDITIONS**

PROPER FIELD CONDITIONS ARE NECESSARY TO KEEP FAIRNESS OF GAME PLAY. ABILITY TO PLAY IN DIFFERENT WEATHER CONDITIONS



***SUPPORTIVE FACILITIES***

***SUPPORTIVE EQUIPMENT***



***RELAXATION***

***COPING***





**AESTHETICS**

OVERALL BUILDING LOOK, SURROUNDING SCENERY, VIEWS, BUILDING DETAILS

**MEMORABLE EVENTS**

CLOSE GAMES, UNIQUE SPACES, ART, BRANDING, DETAILING WHAT WILL BRING PEOPLE BACK TO THE SPACE

**STRESS**

MINIMIZING STRESS FOR ALL USERS - ON FIELD, IN PUBLIC AREAS, ACCESS TO THE FACILITY AND THROUGHOUT IT

**EXCITEMENT**

ENHANCING EXCITING MOMENTS THROUGHOUT FACILITY ON GAMEDAYS, AS WELL AS YEAR ROUND FOR THOSE USERS. WINS, SPECIAL EVENTS

**FOCUS**

ALLOWING APPROPRIATE AMOUNTS OF FOCUS FOR PLAYERS ON FIELD OR AT PRACTICE, COACHES/STAFF WHILE WORKING, FANS WATCHING GAMES

**DISTRACTION**

ADDRESSES GOOD AND BAD DISTRACTIONS FOR ALL USERS. HOW TO MINIMIZE BAD DISTRACTIONS AND INFLUENCE GOOD DISTRACTIONS

**INSPIRATION**

ABILITY TO INSPIRE ALL USERS. PLAYERS, COACHES, AND STAFF DAILY. INSPIRE FANS ON GAMEDAYS AND AT SPECIAL EVENTS

**SUPPORTIVE EQUIPMENT**

INCLUDES PROPER EQUIPMENT TO ASSIST ATHLETES ON IMPROVING THEIR PERFORMANCE. ALSO FOR STAFF ASSISTING IN GAMEDAY PRODUCTION

**SUPPORTIVE FACILITIES**

HAVING THE PROPER FACILITY NEEDS FOR ALL TYPES OF EVENTS THAT WILL BE HELD THERE - WITH MAXIMUM EFFICIENCY

**RELAXATION**

ABILITY FOR ALL USERS TO FIND RELAXATION DURING THEIR TIME AT THE FACILITY. FANS IN PUBLIC AREAS, PLAYERS IN LOCKER ROOMS AND ON FIELD

**MOTIVATION**

PRODUCES MOTIVATION FOR ALL USERS. IMPORTANT IN PRIVATE TEAM AREAS, IN PRACTICE FACILITY, AND ON FIELD

**COPING**

ALLOWS PROPER SPACES FOR USERS TO COPE WHEN DEALING WITH DIFFICULT SITUATIONS, SUCH AS LOSING GAMES, NOT PLAYING WELL, DAILY ISSUES

**ACCESS**

WELL-PLANNED ACCESS ROUTES FOR ALL TYPES OF USERS. FROM GETTING TO THE SITE, TO MOVING THROUGHOUT THE CONCOURSE AND TO SEATS IN STANDS

**THERMAL COMFORT**

ADDRESSES CLIMATE CONDITIONS FOR NORTH DAKOTA. PROPER BARRIERS AND PROTECTION TO KEEP USERS COMFORTABLE. INDOOR FACILITY

**VISUAL COMFORT**

PROPER LIGHTING AND SITE LINES DURING GAMES, PRACTICES, EVENTS AND AROUND THE WHOLE FACILITY

**ACOUSTICS**

ADDRESSES PROPER ACOUSTIC LEVELS THROUGHOUT THE FACILITY. GAME DAY SPEAKERS, PROPER ACOUSTICS IN PRACTICE FACILITY

**FREE MOVEMENT**

ALLOWS FOR FREE MOVEMENT FOR ALL USERS AT FACILITY, WHILE ALSO CONSIDERING SECURITY AND PUBLIC VS. PRIVATE AREAS

**PHYSICAL COMFORT**

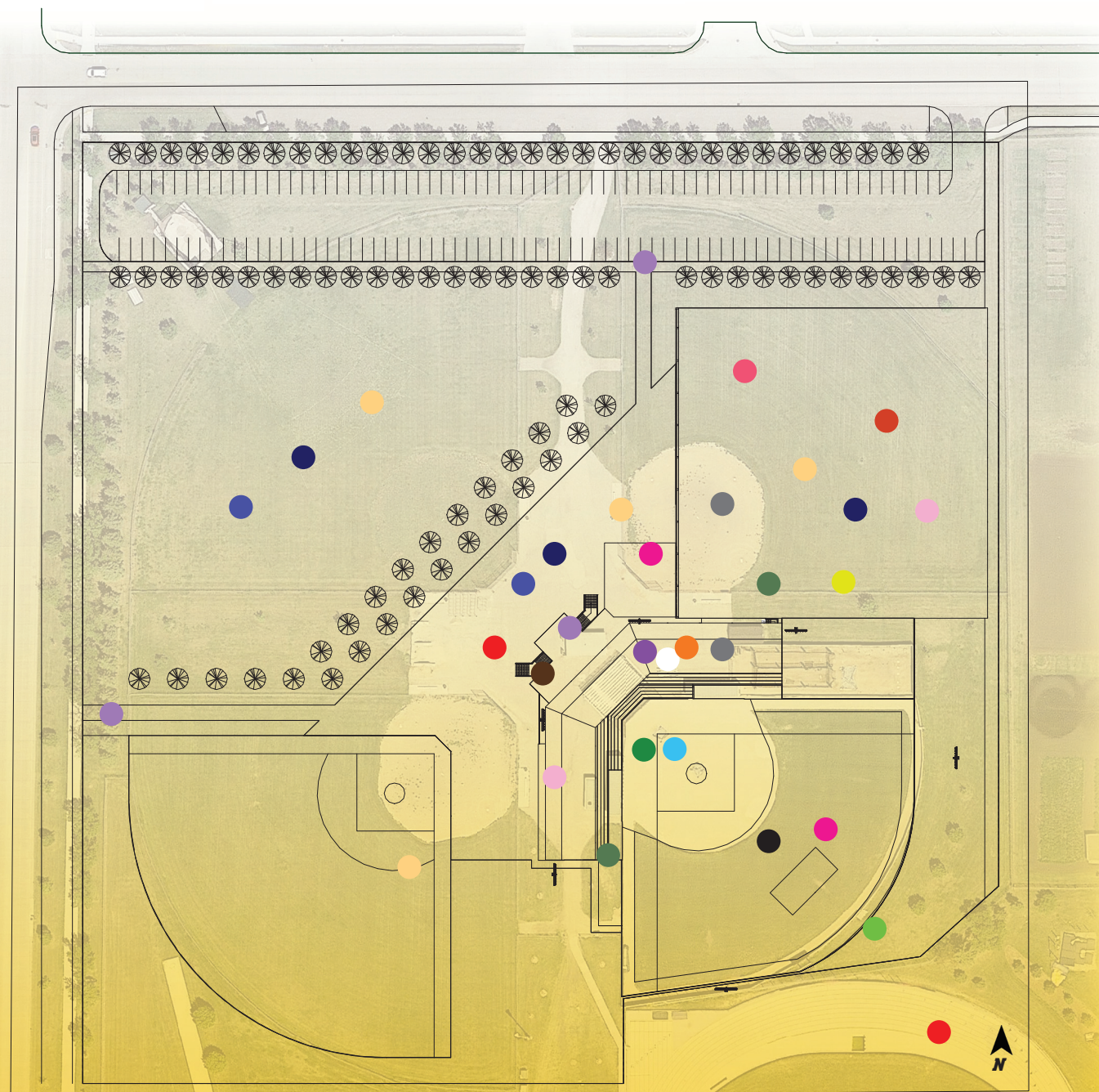
CREATES OVERALL PHYSICAL COMFORT WHILE SPENDING TIME IN THE FACILITY FOR ALL USERS - WILL BRING PEOPLE BACK IF GOOD

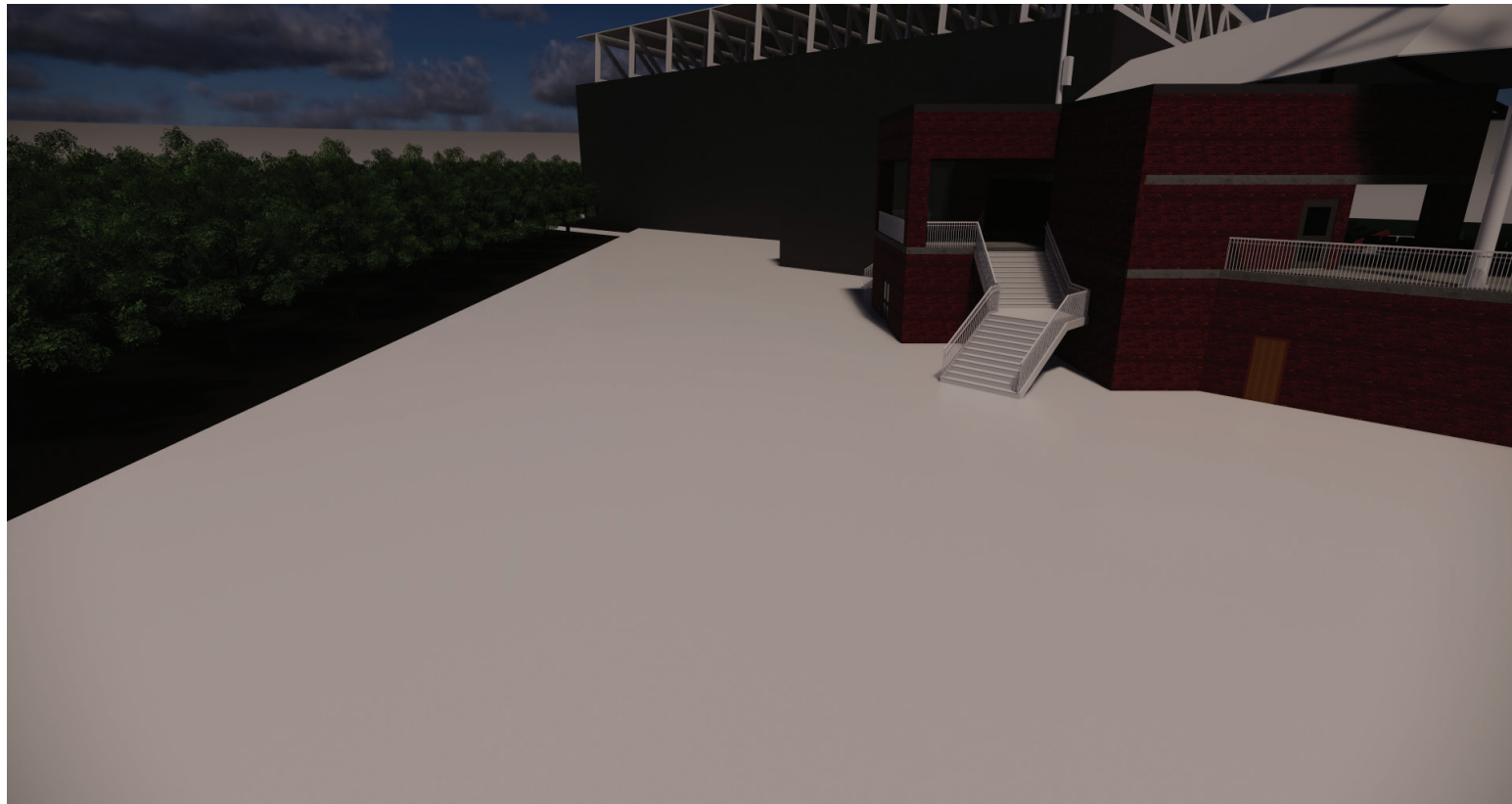
**FOOD & DRINK**

HAVING PROPER SPACES AND FACILITIES TO PROVIDE CONCESSIONS ON GAMEDAYS AND FOR EVENTS. FUELING THE ATHLETES DAILY

**FIELD CONDITIONS**

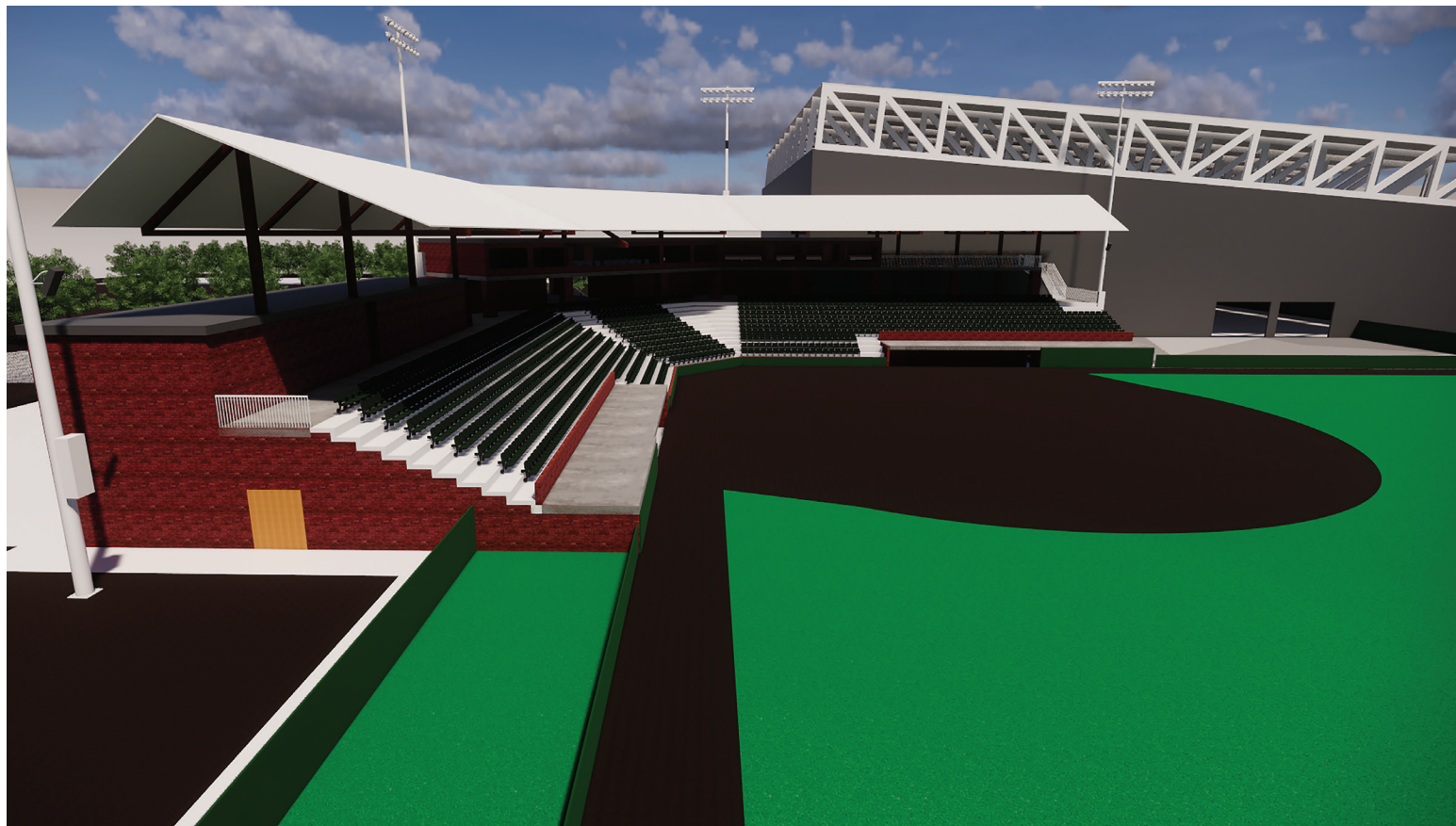
PROPER FIELD CONDITIONS ARE NECESSARY TO KEEP FAIRNESS OF GAME PLAY. ABILITY TO PLAY IN DIFFERENT WEATHER CONDITIONS





***ACCESS***

***THERMAL COMFORT***



***VISUAL COMFORT***

***ACOUSTICS***





**AESTHETICS**

OVERALL BUILDING LOOK, SURROUNDING SCENERY, VIEWS, BUILDING DETAILS

**MEMORABLE EVENTS**

CLOSE GAMES, UNIQUE SPACES, ART, BRANDING, DETAILING WHAT WILL BRING PEOPLE BACK TO THE SPACE

**STRESS**

MINIMIZING STRESS FOR ALL USERS - ON FIELD, IN PUBLIC AREAS, ACCESS TO THE FACILITY AND THROUGHOUT IT

**EXCITEMENT**

ENHANCING EXCITING MOMENTS THROUGHOUT FACILITY ON GAMEDAYS, AS WELL AS YEAR ROUND FOR THOSE USERS. WINS, SPECIAL EVENTS

**FOCUS**

ALLOWING APPROPRIATE AMOUNTS OF FOCUS FOR PLAYERS ON FIELD OR AT PRACTICE, COACHES/STAFF WHILE WORKING, FANS WATCHING GAMES

**DISTRACTION**

ADDRESSES GOOD AND BAD DISTRACTIONS FOR ALL USERS. HOW TO MINIMIZE BAD DISTRACTIONS AND INFLUENCE GOOD DISTRACTIONS

**INSPIRATION**

ABILITY TO INSPIRE ALL USERS. PLAYERS, COACHES, AND STAFF DAILY. INSPIRE FANS ON GAMEDAYS AND AT SPECIAL EVENTS

**SUPPORTIVE EQUIPMENT**

INCLUDES PROPER EQUIPMENT TO ASSIST ATHLETES ON IMPROVING THEIR PERFORMANCE. ALSO FOR STAFF ASSISTING IN GAMEDAY PRODUCTION

**SUPPORTIVE FACILITIES**

HAVING THE PROPER FACILITY NEEDS FOR ALL TYPES OF EVENTS THAT WILL BE HELD THERE - WITH MAXIMUM EFFICIENCY

**RELAXATION**

ABILITY FOR ALL USERS TO FIND RELAXATION DURING THEIR TIME AT THE FACILITY. FANS IN PUBLIC AREAS, PLAYERS IN LOCKER ROOMS AND ON FIELD

**MOTIVATION**

PRODUCES MOTIVATION FOR ALL USERS. IMPORTANT IN PRIVATE TEAM AREAS, IN PRACTICE FACILITY, AND ON FIELD

**COPING**

ALLOWS PROPER SPACES FOR USERS TO COPE WHEN DEALING WITH DIFFICULT SITUATIONS, SUCH AS LOSING GAMES, NOT PLAYING WELL, DAILY ISSUES

**ACCESS**

WELL-PLANNED ACCESS ROUTES FOR ALL TYPES OF USERS. FROM GETTING TO THE SITE, TO MOVING THROUGHOUT THE CONCOURSE AND TO SEATS IN STANDS

**THERMAL COMFORT**

ADDRESSES CLIMATE CONDITIONS FOR NORTH DAKOTA. PROPER BARRIERS AND PROTECTION TO KEEP USERS COMFORTABLE. INDOOR FACILITY

**VISUAL COMFORT**

PROPER LIGHTING AND SITE LINES DURING GAMES, PRACTICES, EVENTS AND AROUND THE WHOLE FACILITY

**ACOUSTICS**

ADDRESSES PROPER ACOUSTIC LEVELS THROUGHOUT THE FACILITY. GAME DAY SPEAKERS, PROPER ACOUSTICS IN PRACTICE FACILITY

**FREE MOVEMENT**

ALLOWS FOR FREE MOVEMENT FOR ALL USERS AT FACILITY, WHILE ALSO CONSIDERING SECURITY AND PUBLIC VS. PRIVATE AREAS

**PHYSICAL COMFORT**

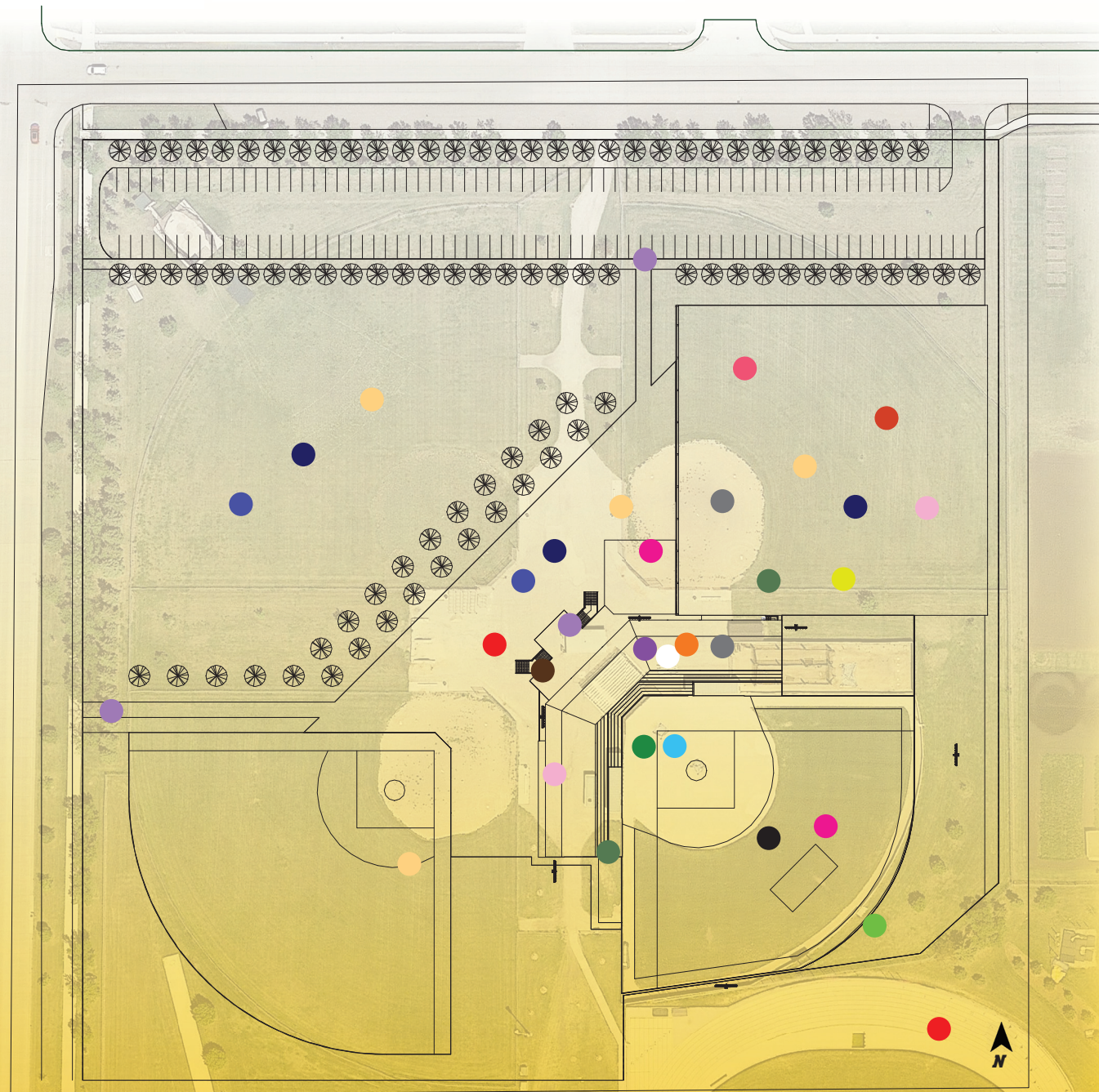
CREATES OVERALL PHYSICAL COMFORT WHILE SPENDING TIME IN THE FACILITY FOR ALL USERS - WILL BRING PEOPLE BACK IF GOOD

**FOOD & DRINK**

HAVING PROPER SPACES AND FACILITIES TO PROVIDE CONCESSIONS ON GAMEDAYS AND FOR EVENTS. FUELING THE ATHLETES DAILY

**FIELD CONDITIONS**

PROPER FIELD CONDITIONS ARE NECESSARY TO KEEP FAIRNESS OF GAME PLAY. ABILITY TO PLAY IN DIFFERENT WEATHER CONDITIONS



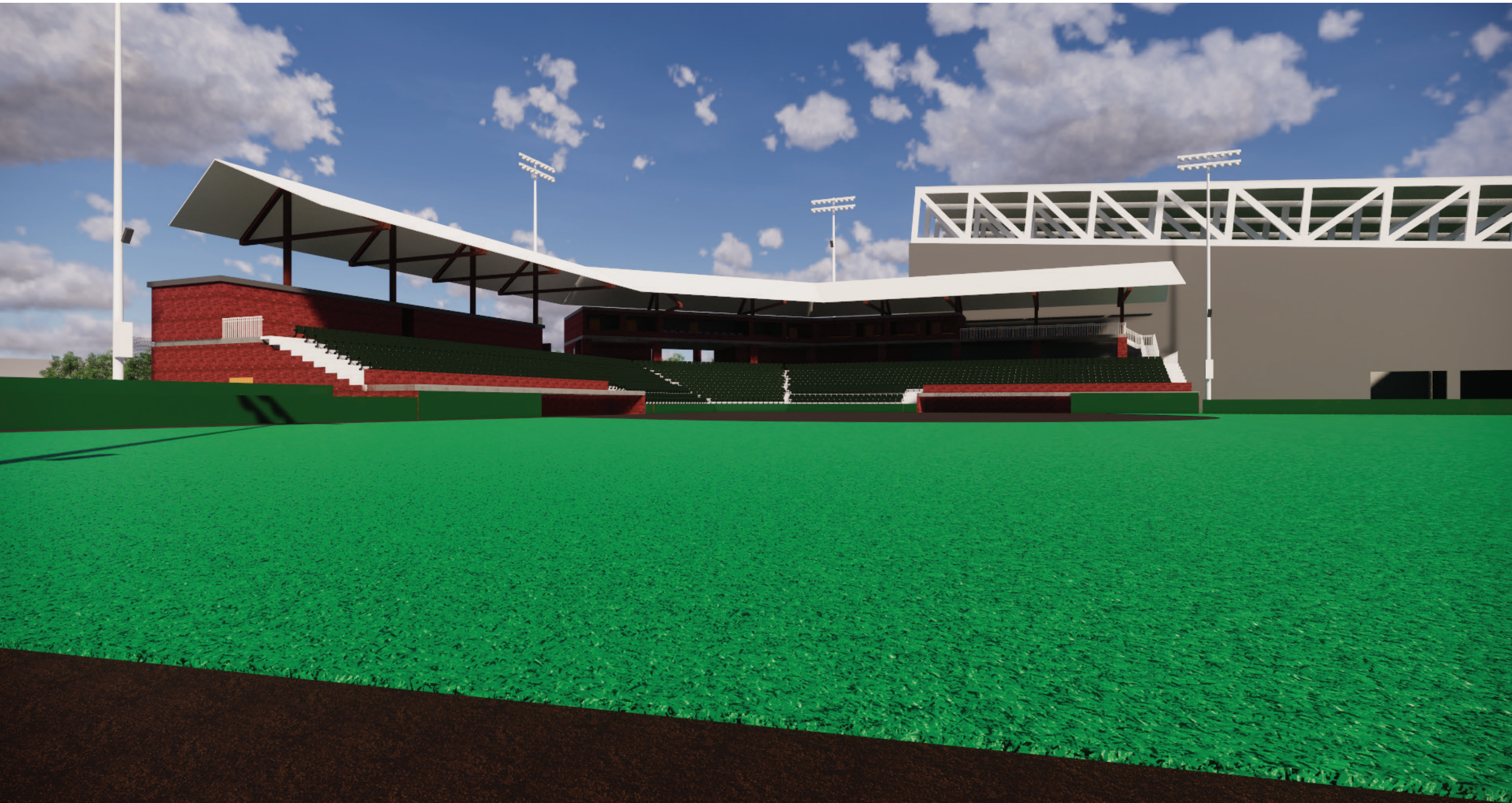
***FREE MOVEMENT***

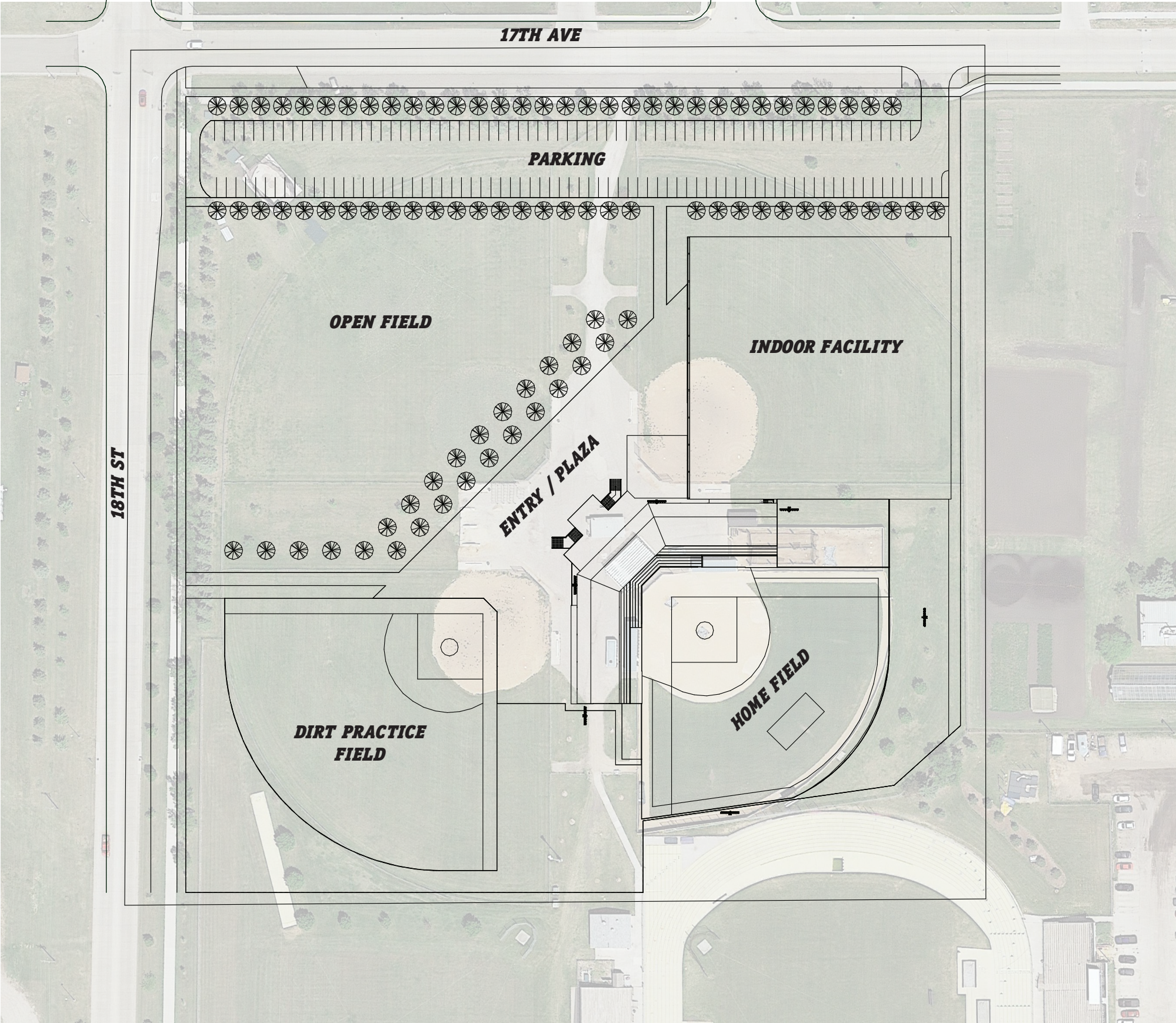
***PHYSICAL COMFORT***

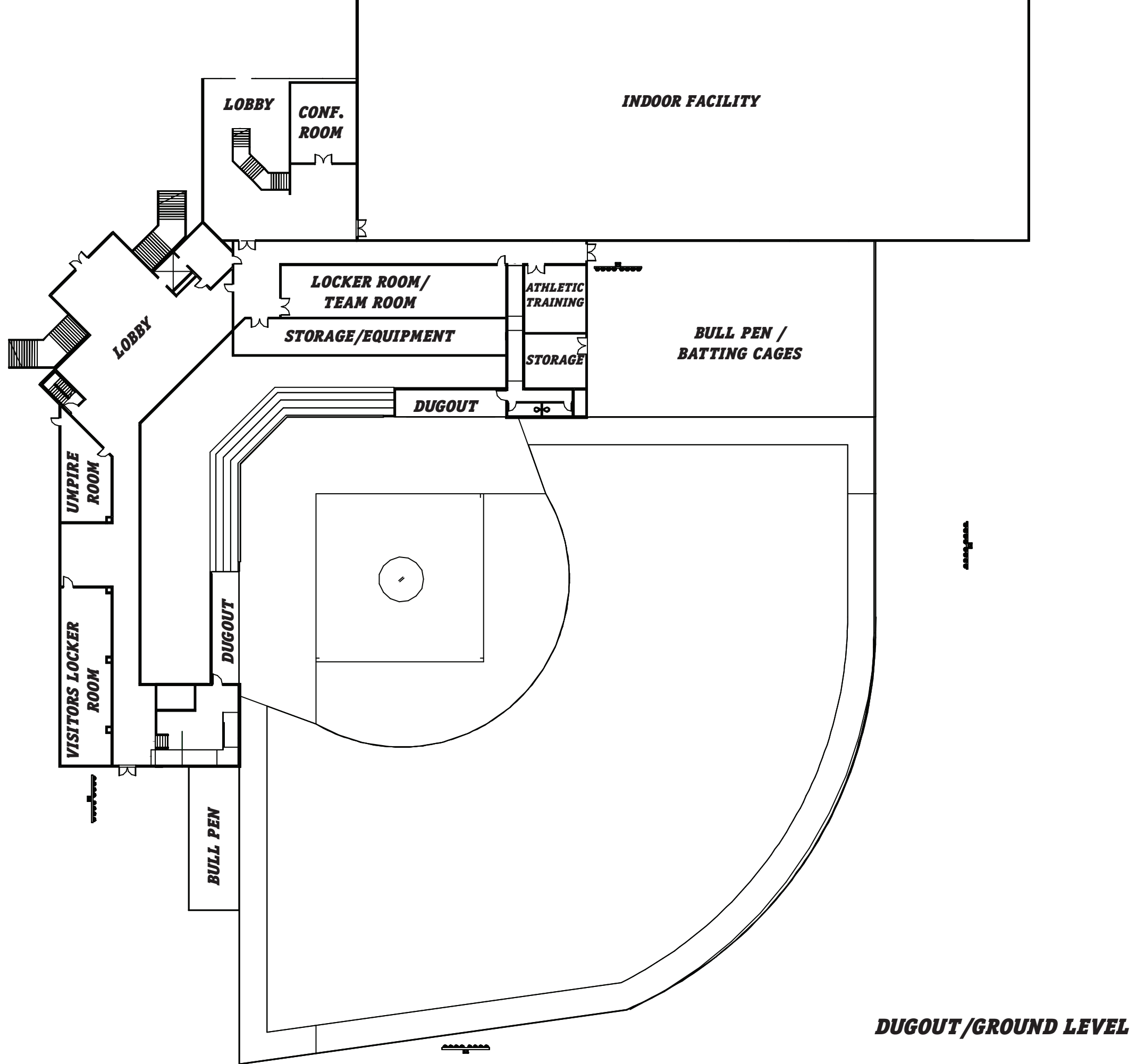
***FOOD & DRINK***

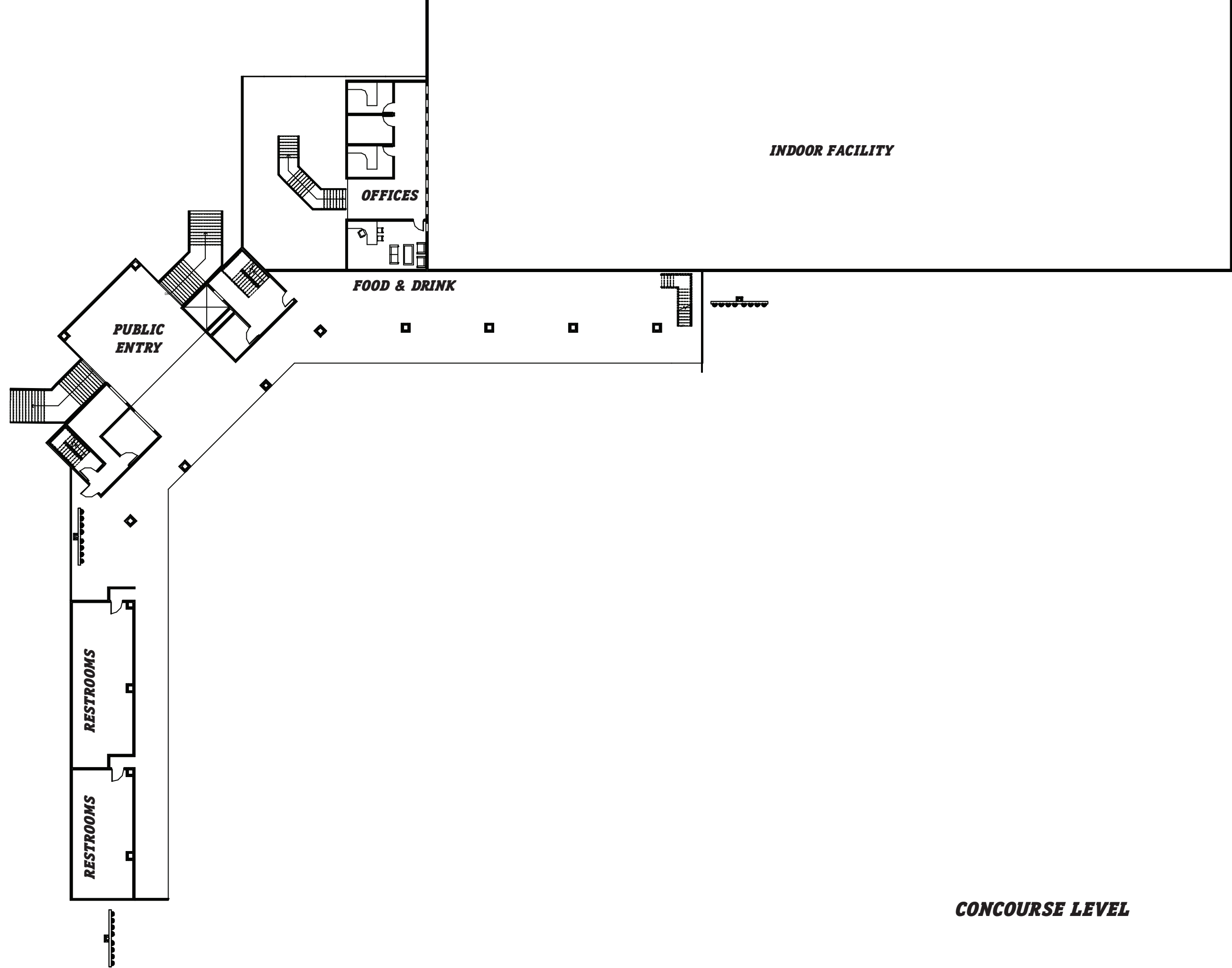
***FIELD CONDITIONS***



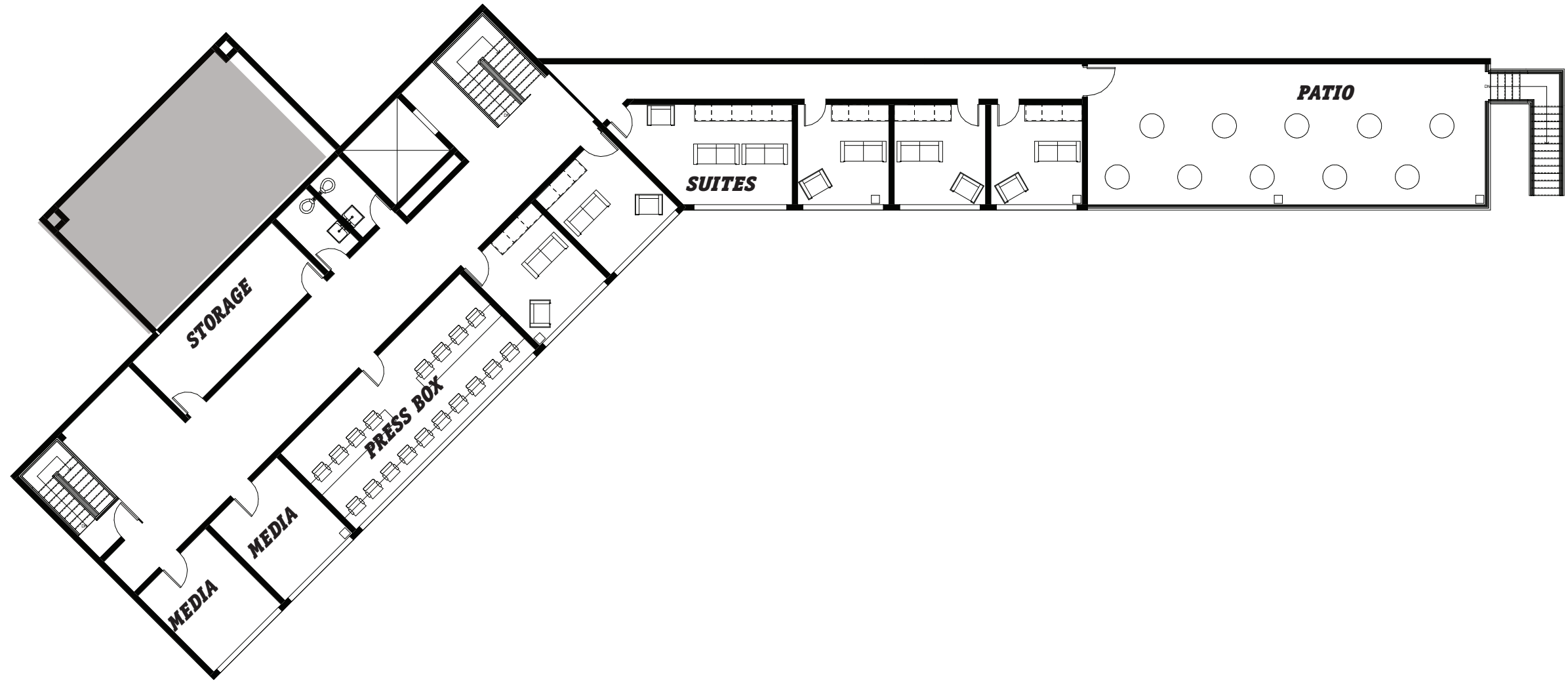




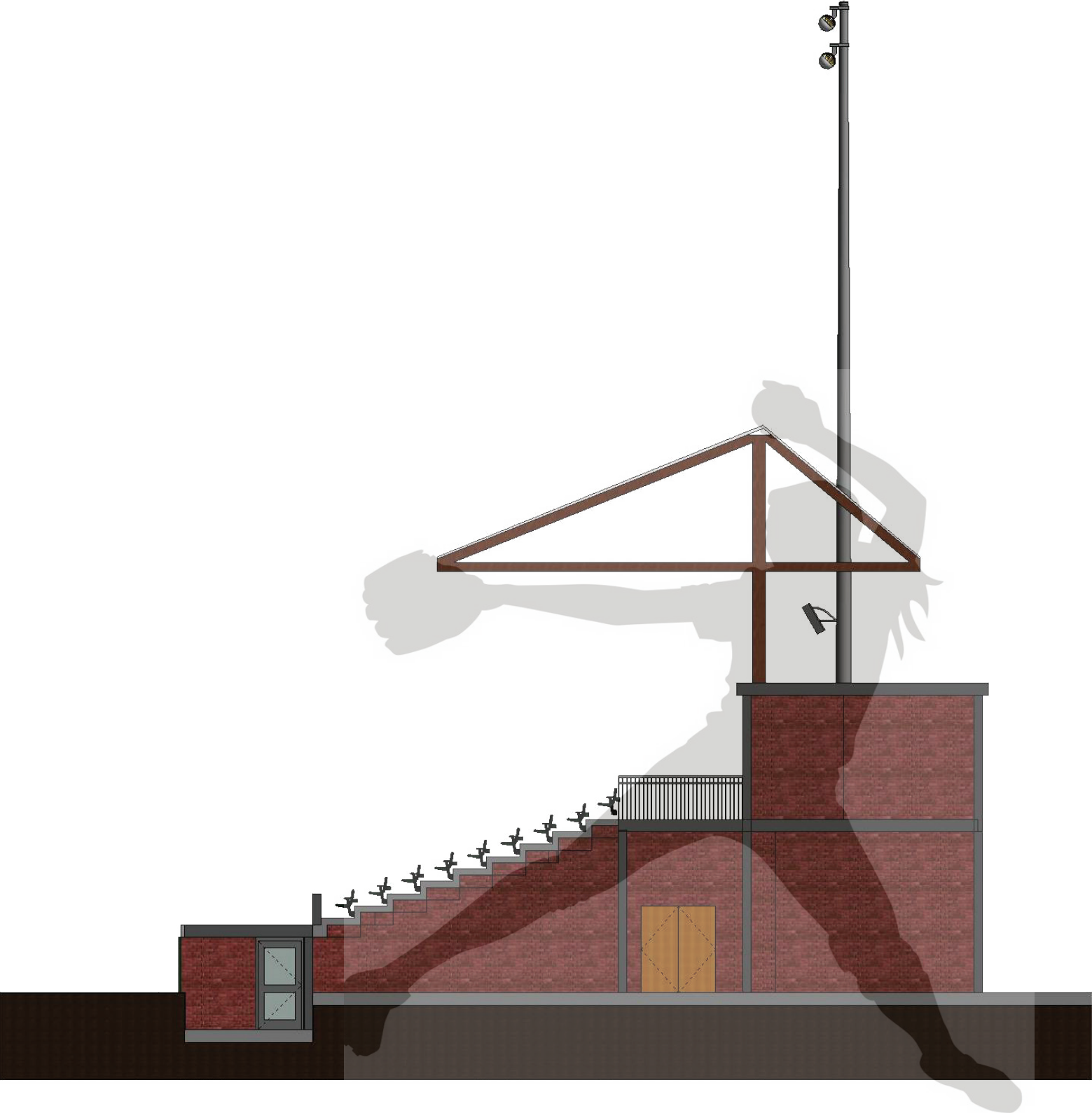




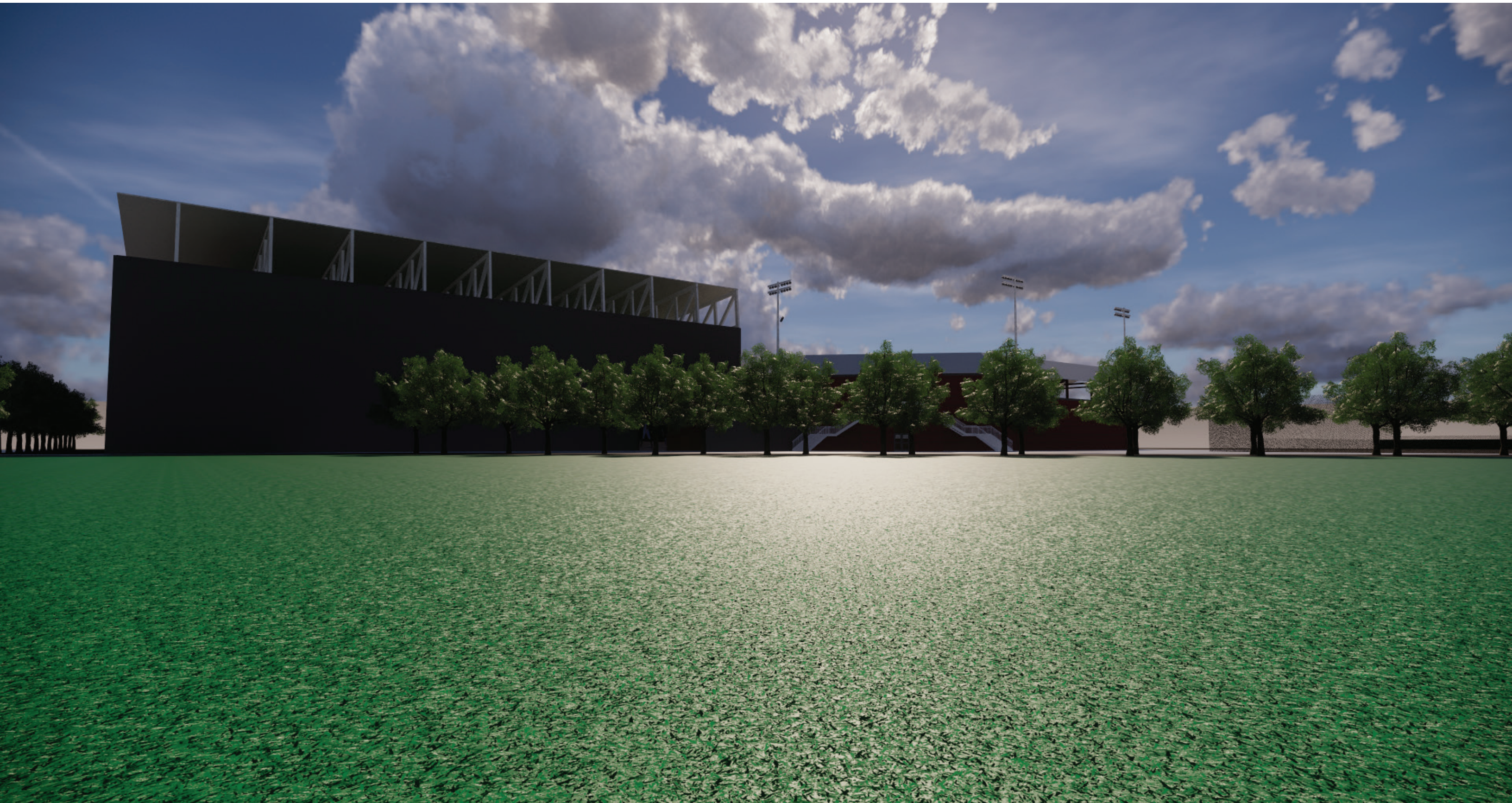
**CONCOURSE LEVEL**



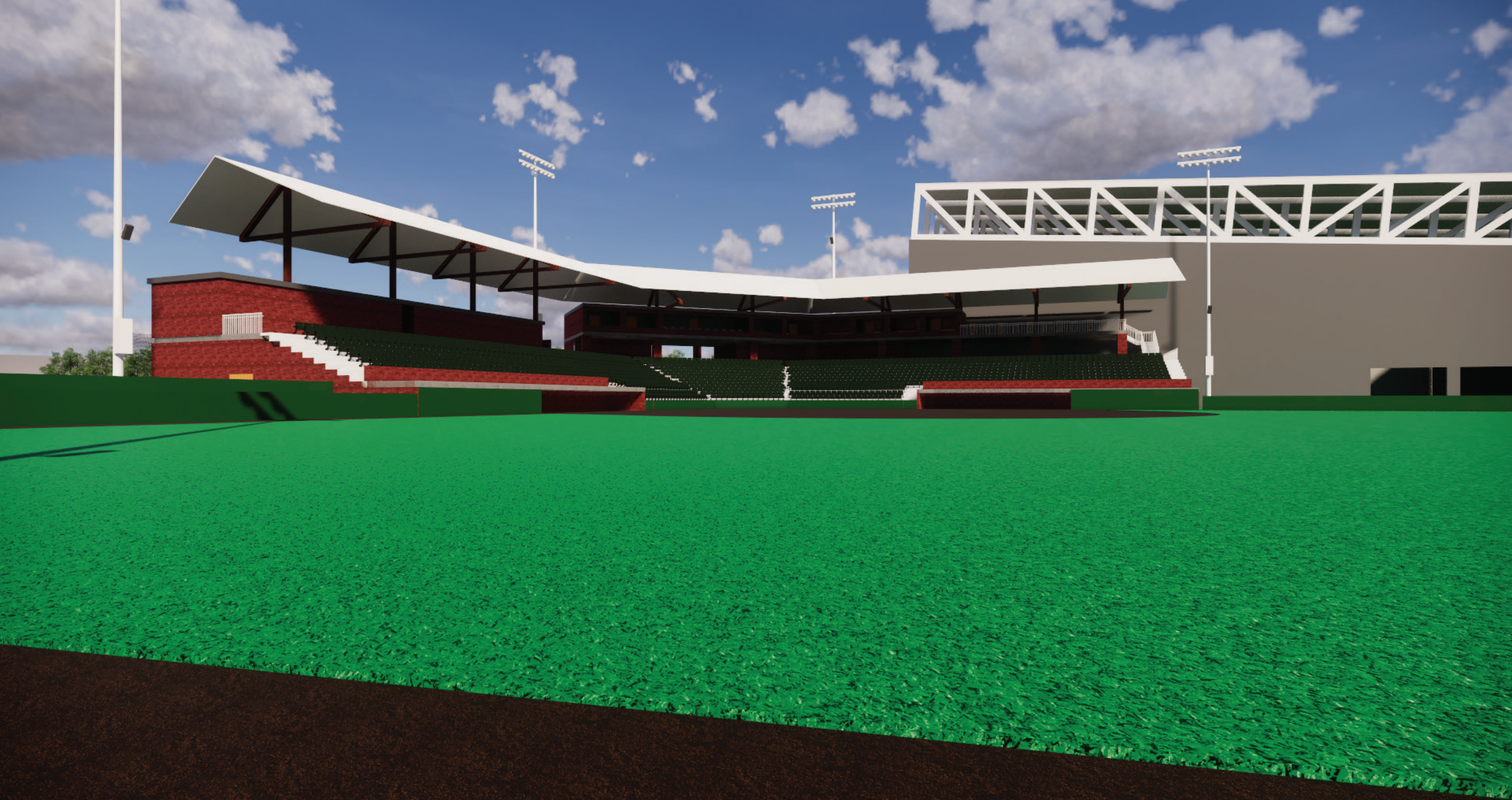
**PRESS BOX LEVEL**











***QUESTIONS/COMMENTS?***