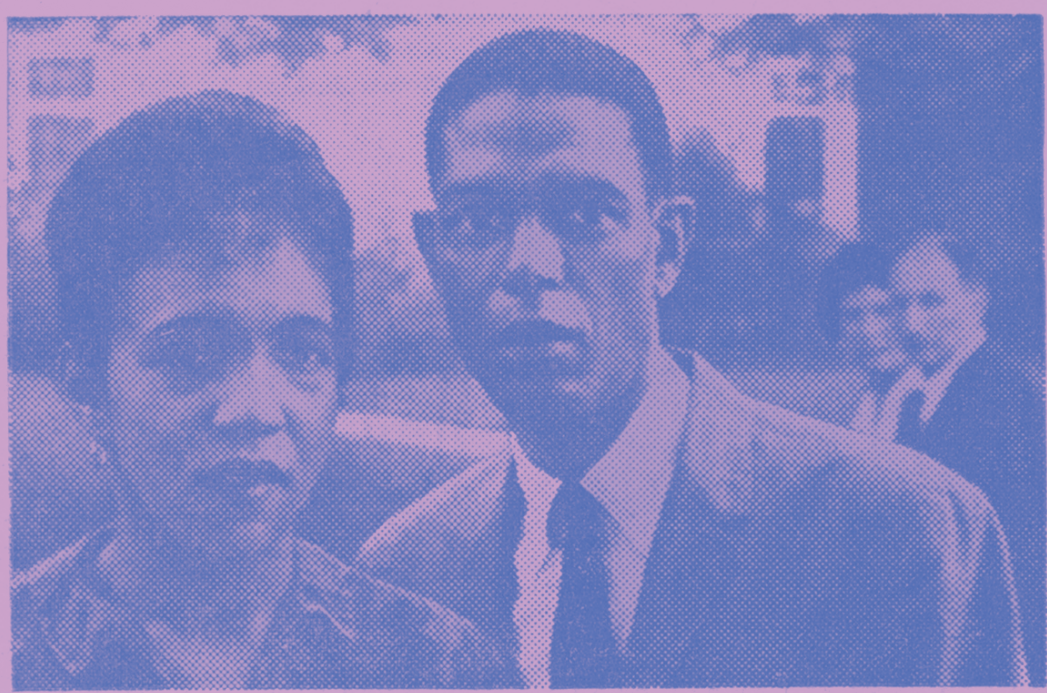


PAINOPTICISM:

THE SOCIALIZATION OF URBAN DWELLERS IN PUBLIC DESIGN

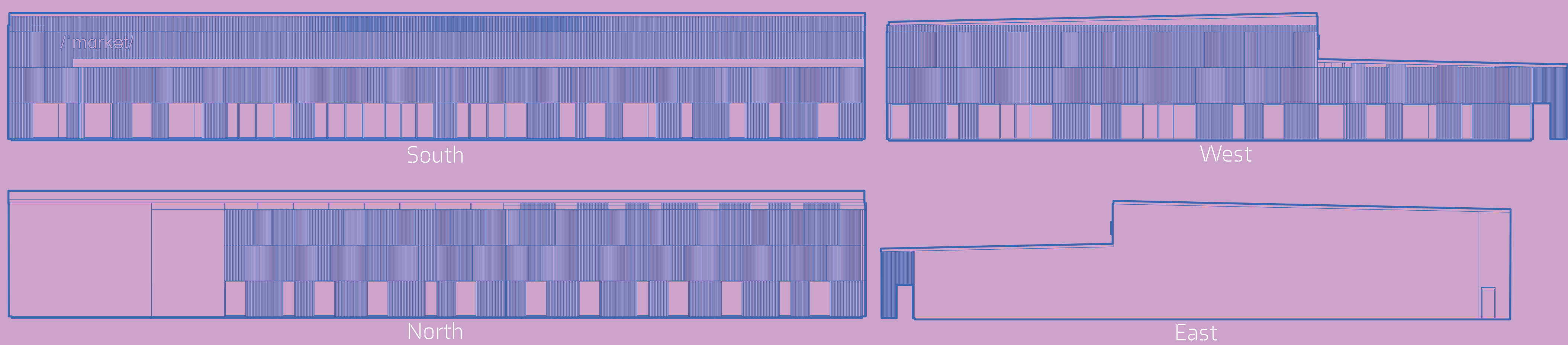


Would you panic if a Negro moved next door?
"I'm broad-minded," said one home owner when Negroes moved into his block. But a short time later he panicked—and sold his house at a loss. In this week's Post, you'll read how speculators decide which blocks are "ripe" for racial change. How they use vicious tactics to force

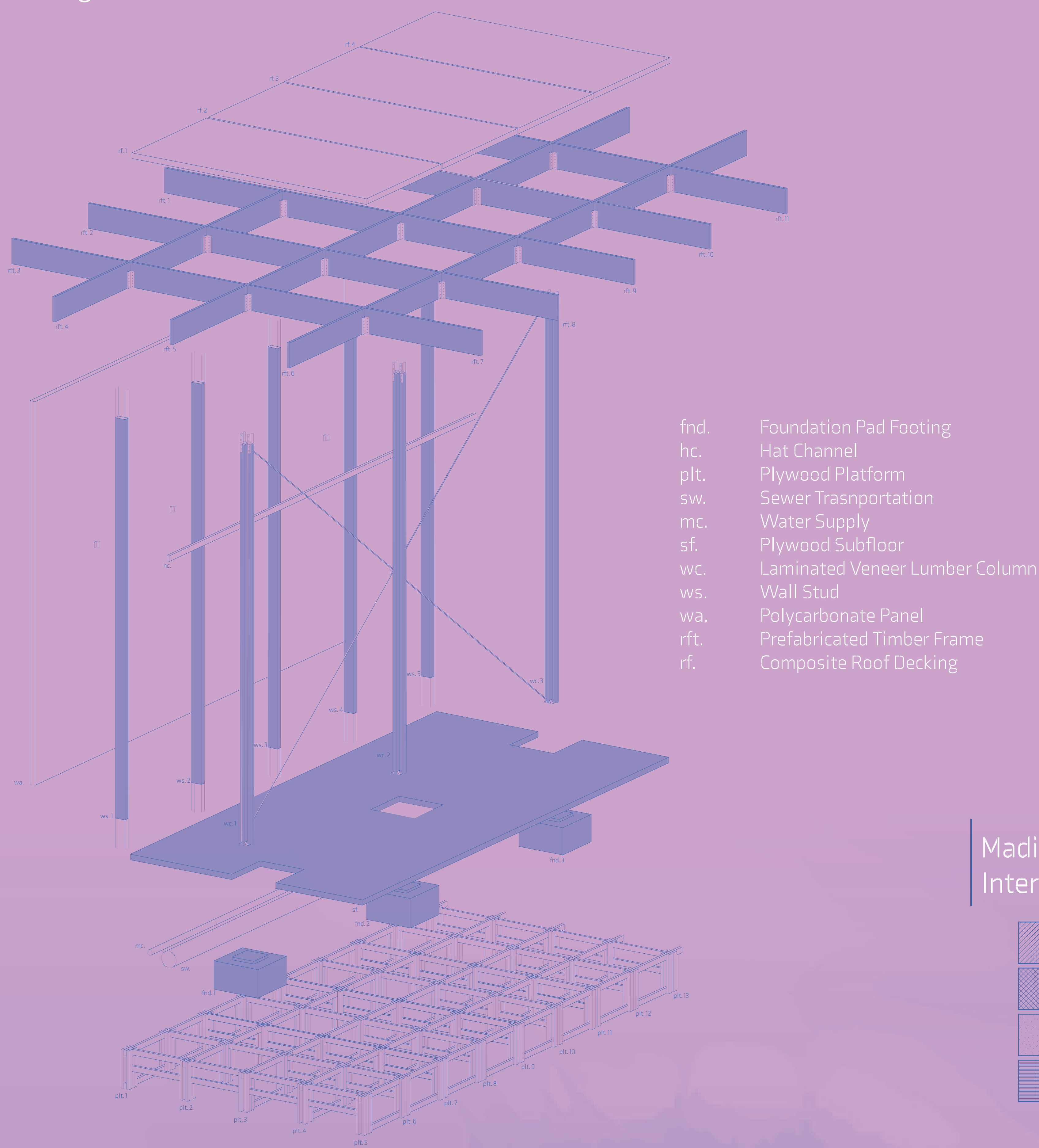
Chicago's Southwest neighborhood Austin has been victimized by vulgar acts of discrimination and violence since the 1960's. As America began integration, the primarily Caucasian neighborhood's racial makeup changed rapidly as a result of dishonest lending practices and blockbusting. Since then, the community has fallen into dilapidation and has remained that way due the city's idleness in finding a permanent solution.

As a response, this thesis identifies a plausible starting point that could stimulate long term social and economic growth: A temporary space which allows itself to meet the changing needs of the community and adapt to several prototypical sites along one of Chicago's most notable streets. The goal is to aid residents in overcoming the many barriers of starting their own business while nurturing the community's most basic needs.

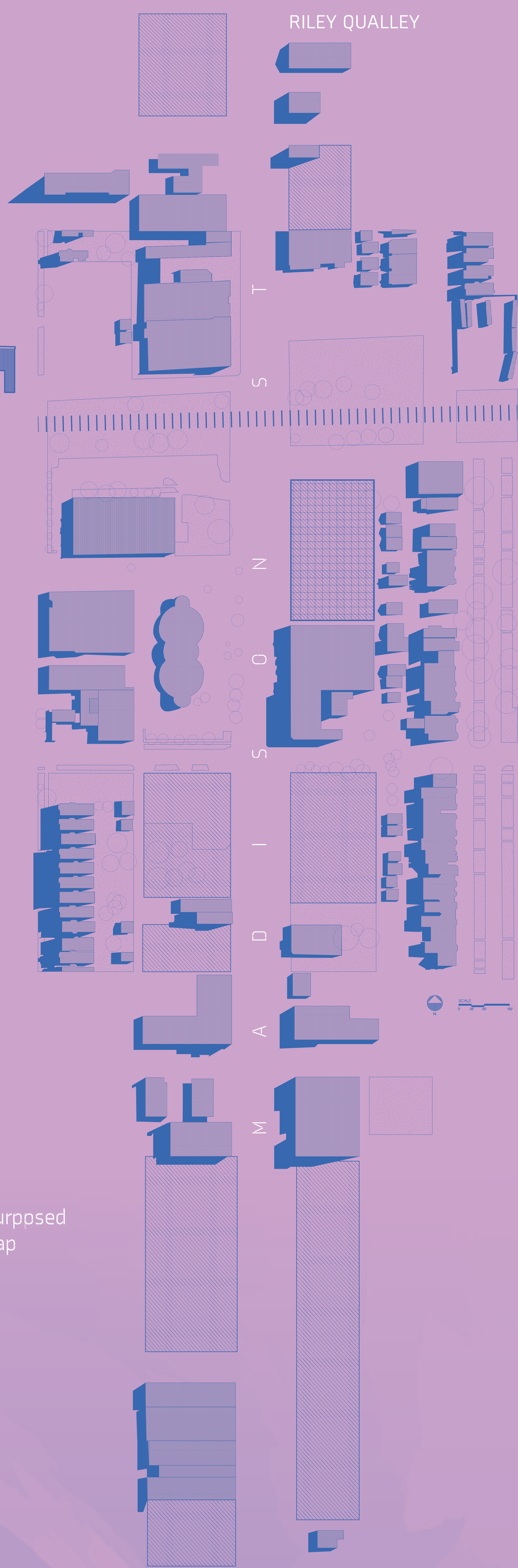
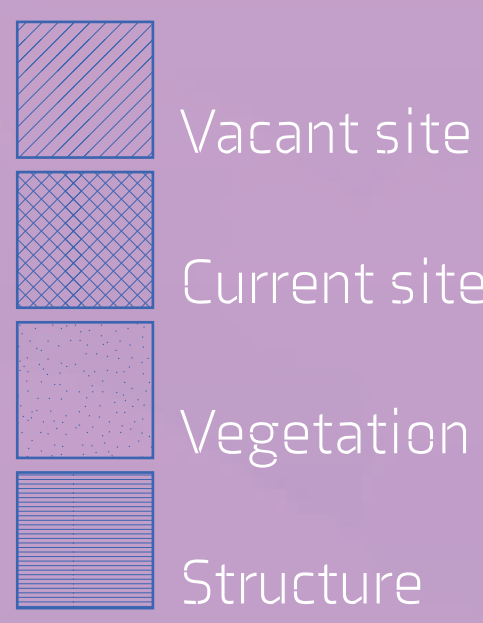
Building Elevations 1/8" = 1' 0"



Exploded Axonometric Structural Diagram No Scale



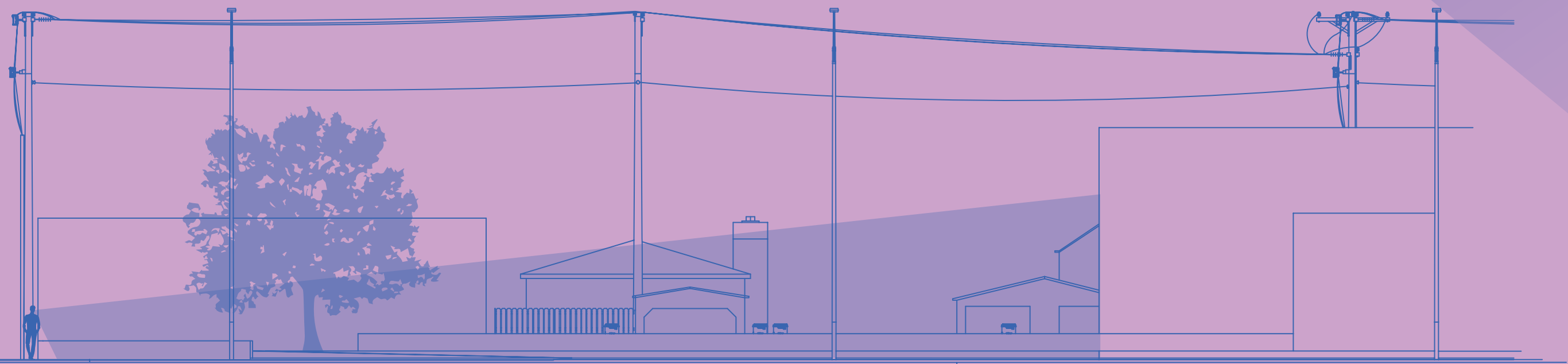
Madison Ave Purposed Intervention Map



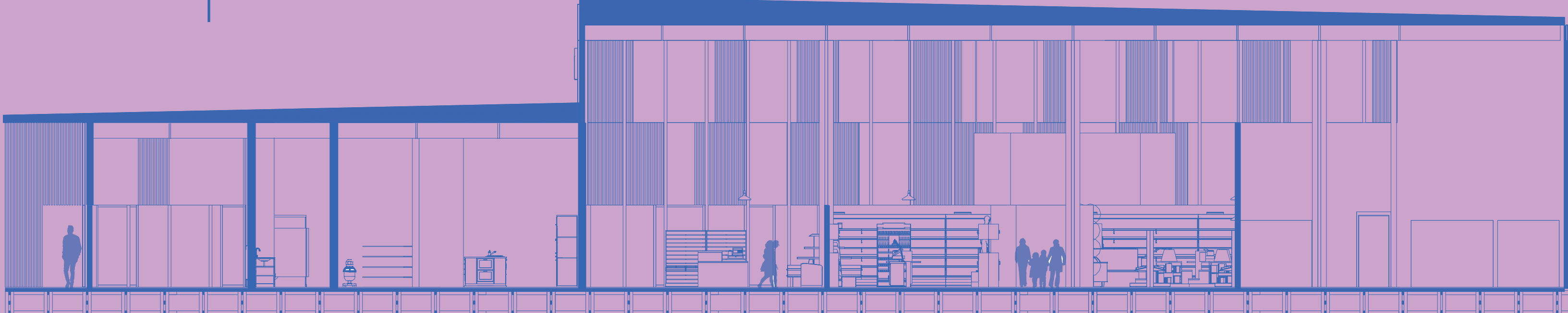


"For our low income populations security in their residential environment, security from the natural elements, from criminals, and from authority is the first step to liberation" - Oscar Newman

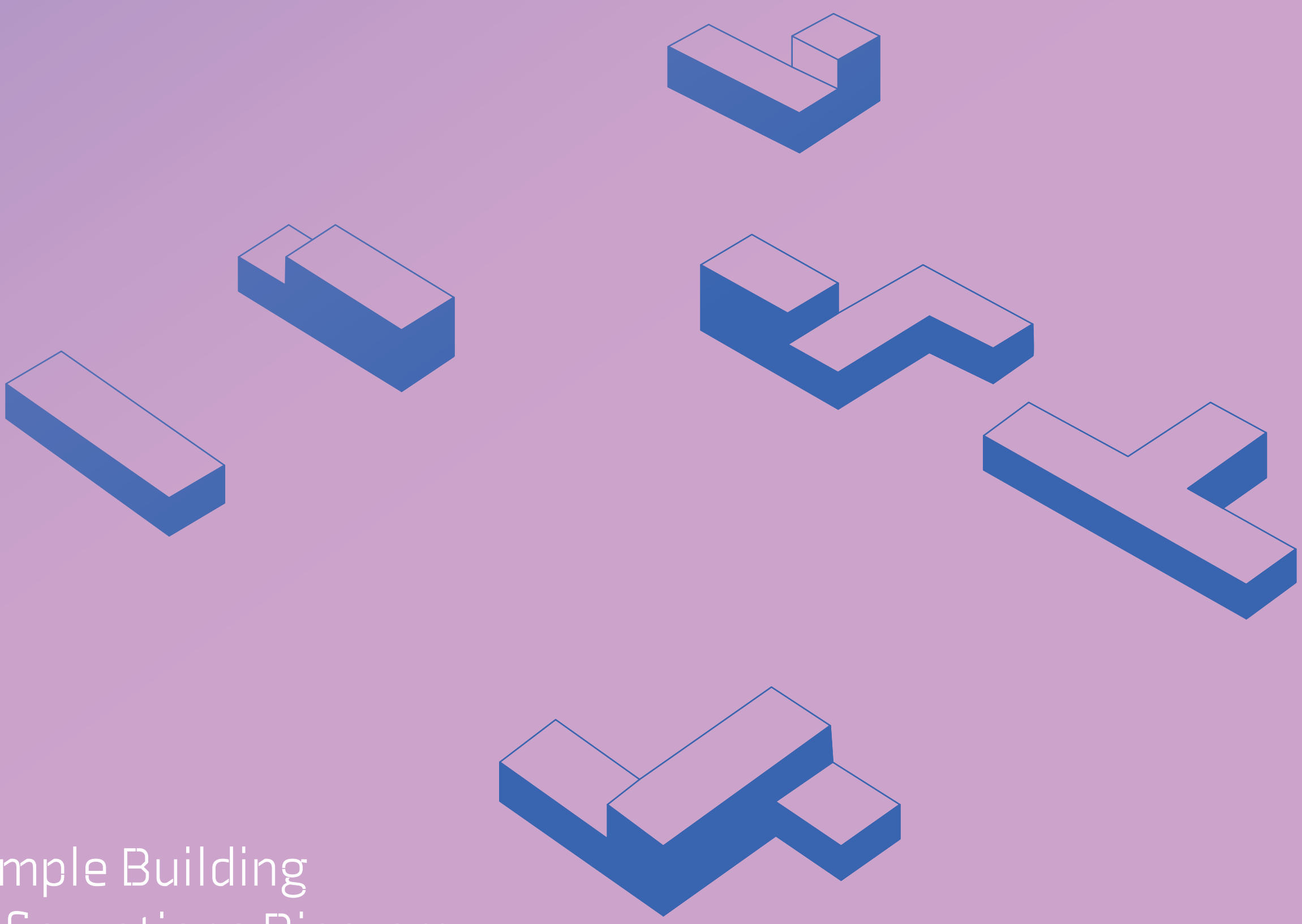
Clear Sight Lines Diagram
No Scale



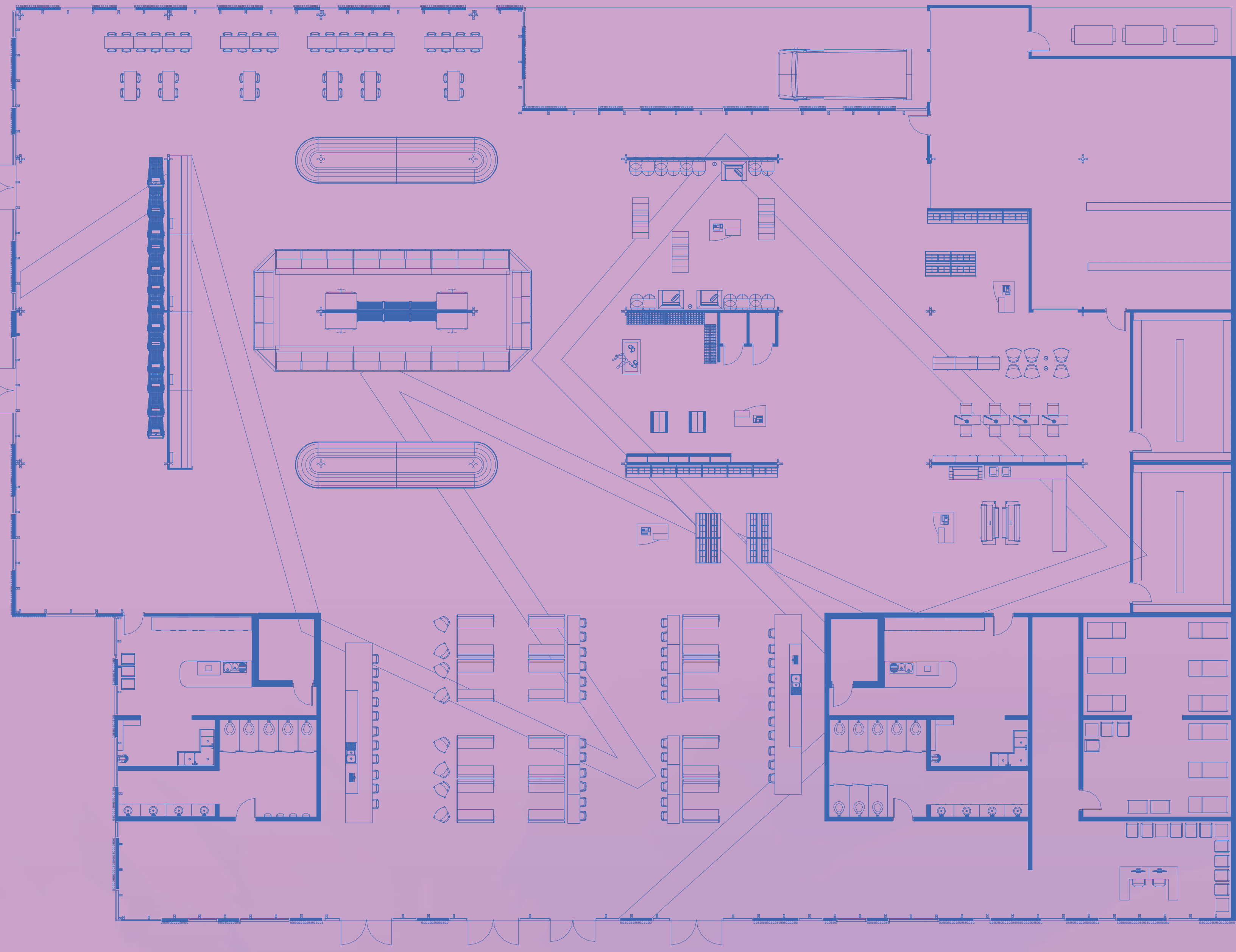
Section Cut
Scale 1/8" = 1' - 0"



Example Building Configurations Diagram
No Scale



Ground Floor Plan
Scale 1/8" = 1' - 0"



Alternative Escape Route Diagram
Scale 1/32" = 1' - 0"

