



healing the invisible



how can we better design for healing?

my experience



photo credit: Ian Horner

project goals



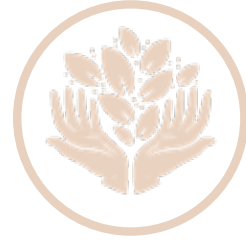
photo credit: Amy Luschen



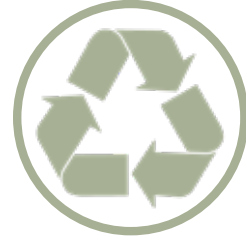
better healing environment



supportive community



connections with nature



eco-friendly/sustainability



spreading awareness



research

"...however practical, straight lines and rectangular spaces - hence forms - aren't found anywhere in the human body, human movement, human activity, nor anywhere in nature. Nothing living is rectanguloid."

- Christopher Day

Places of the Soul; Architecture and Environmental Design as Healing Art

"multitrack systems [that] make the whole living place seem a living being."

- Christopher Day
Places of the Soul; Architecture and Environmental Design as Healing Art



"buildings whose allegiance is to life are quite different. Rather than assert themselves, they create places. With materials attractive to touch, see and smell, their very substance welcomes us through our senses. Their forms are more mobile, life-compatible, and their qualities change with the light, weather and season. They feed the soul and emanate messages of care and respect - key foundations of beauty. They nourish heart and spirit"

- Christopher Day

Places of the Soul; Architecture and Environmental Design as Healing Art

biophilic & daylighting design

integrating views to the outdoors, allowing large amounts of daylighting, and application of warm natural materials makes for much more comforting spaces throughout a healthcare environment.



typical waiting room



warm lighting and materials



large curtain wall systems



heightened ceilings



Room without daylighting and nature



Room with daylighting and views of nature

patients who received higher amounts of sunlight intensity took 22% less analgesic medication and had 21% lower medication costs" - overall these patients felt less pain throughout their visit and were feeling better upon leaving

22%

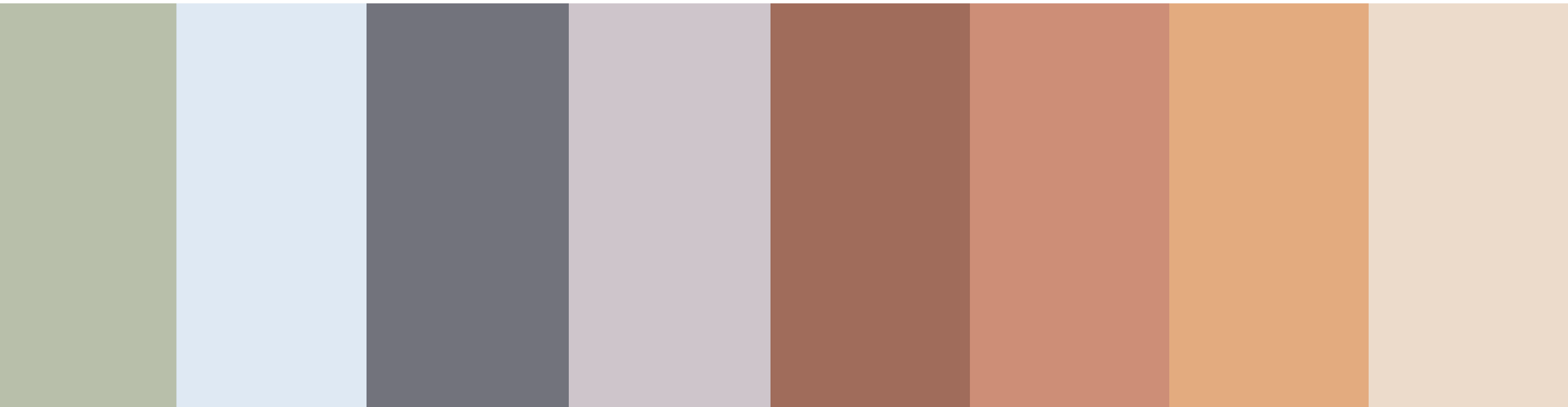
21%

color psychology

"The physicians of old revered it, belived in it's healing properties,
diagnosed through color, and perscibed color."

-Faber Birren

*Color & Human Response; Aspects of light and color bearing on the reactions of living
things and the welfare of human beings*



supportive and comfortable communities

Zayed Center for Research into Rare Diseases in Children



<https://www.elsevier.com/connect/the-right-healthcare-environment-can-reduce-your-stress>

Maggies Cancer Caring Centers



<https://www.archdaily.com/498519/the-story-of-maggie-s-centres-how-17-architects-came-to-tackle-cancer-care>



design response

program and users

a wellness and rehab center for those suffering from autoimmune and chronic disorders. This facility aims to heal those who are suffering, provide a supportive community, educate those effected with knowledge of their illnesses, spread awareness of them, and to aid them in pursuing the best life possible while managing their illnesses.

the user group for this facility includes:

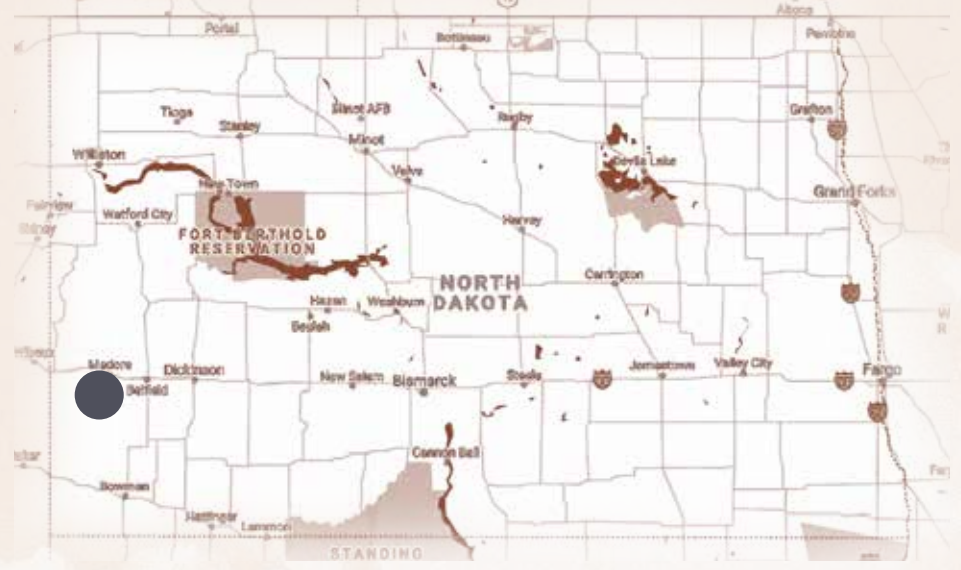
- those living with an autoimmune or chronic disorder, visiting after a diagnosis or after a flare in a recovering sense
- family and friends of patients, anyone involved who is looking to learn more about these invisible illnesses
- providers; doctors, nurses, therapists, social workers
- researchers, those working closely with patients and clinicians in order to learn more about the illnesses



the site



photo credit: Ian Horner



Little Missouri National Grasslands
and Badlands of North Dakota



photo credit: Amy Luschen



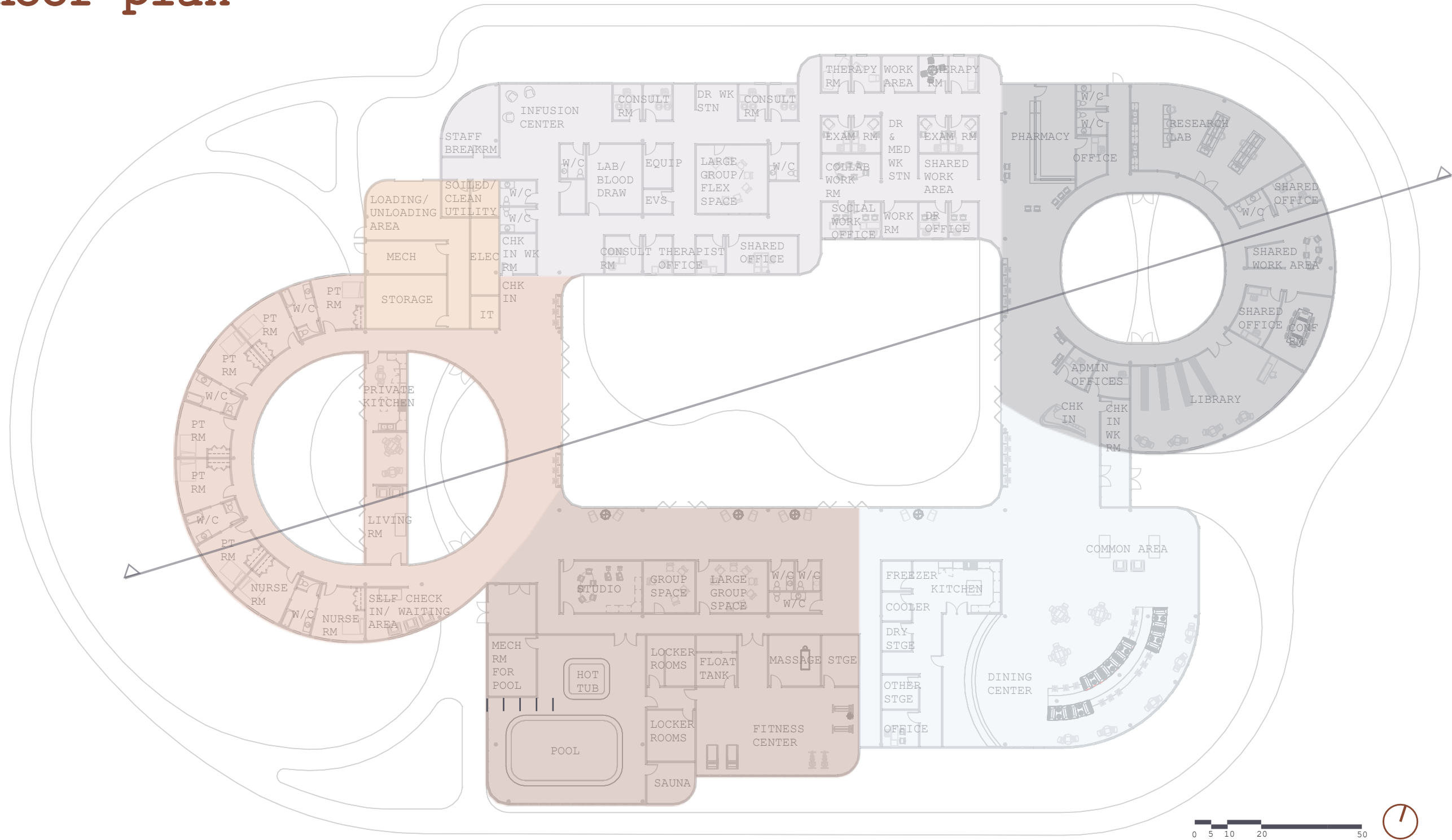
Theodore Roosevelt National Park
and the Petrified Forest



photo credit: Amy Luschen



main floor plan



living areas

mechanical

clinic

research and library

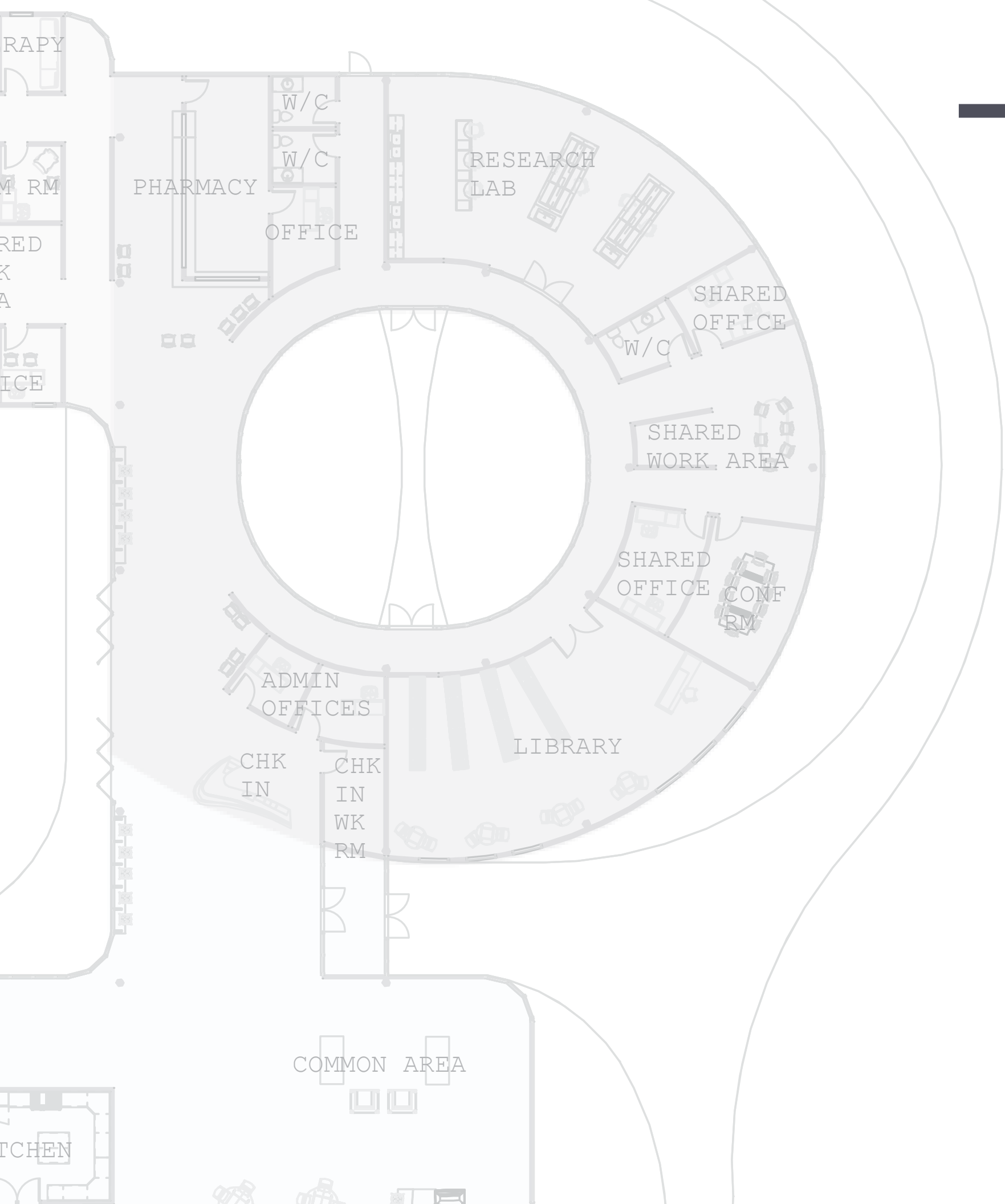
common area

wellness area



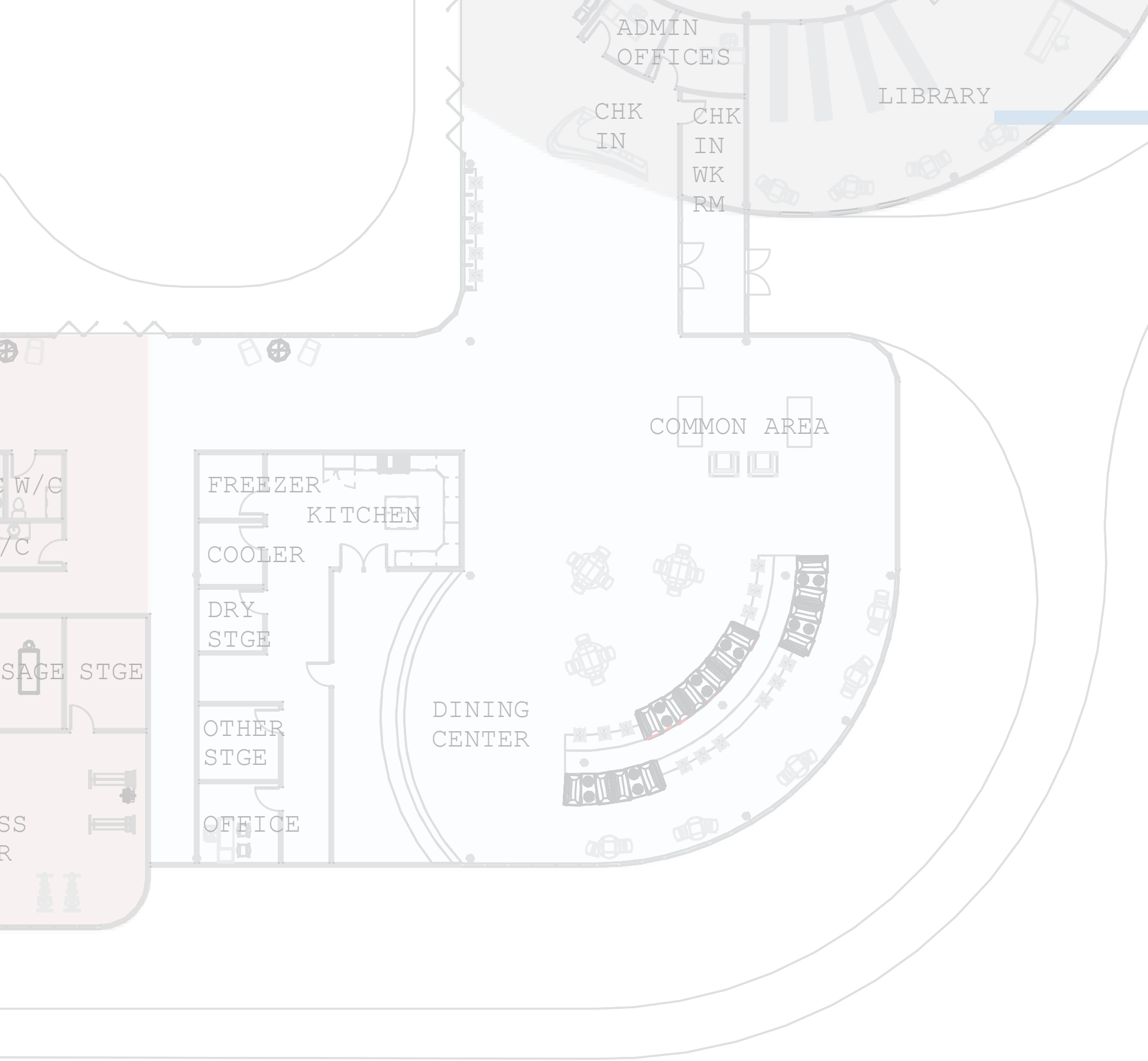


research center and library



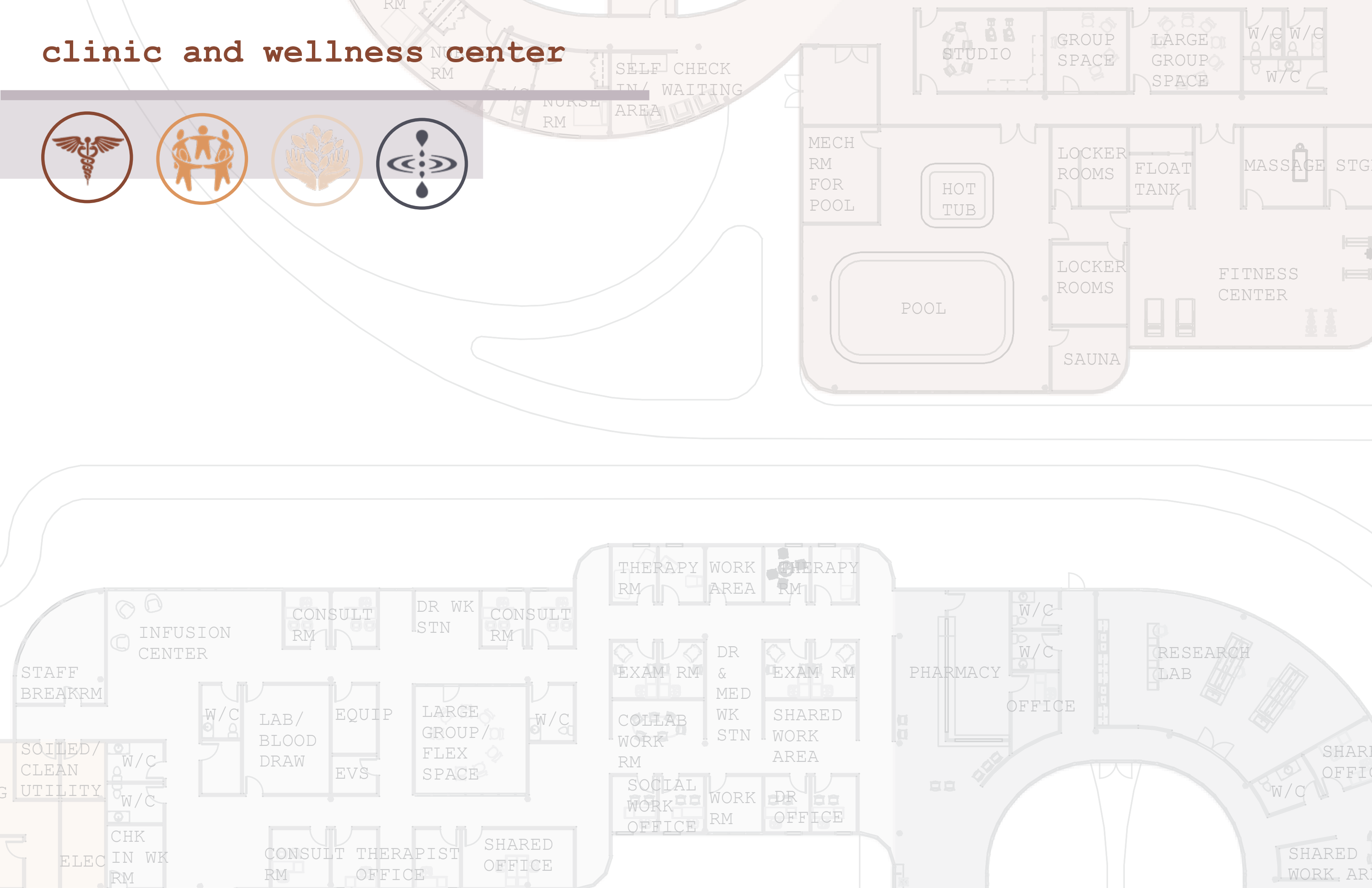
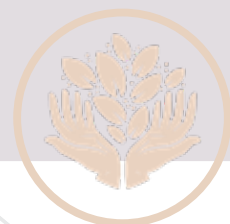


the common areas



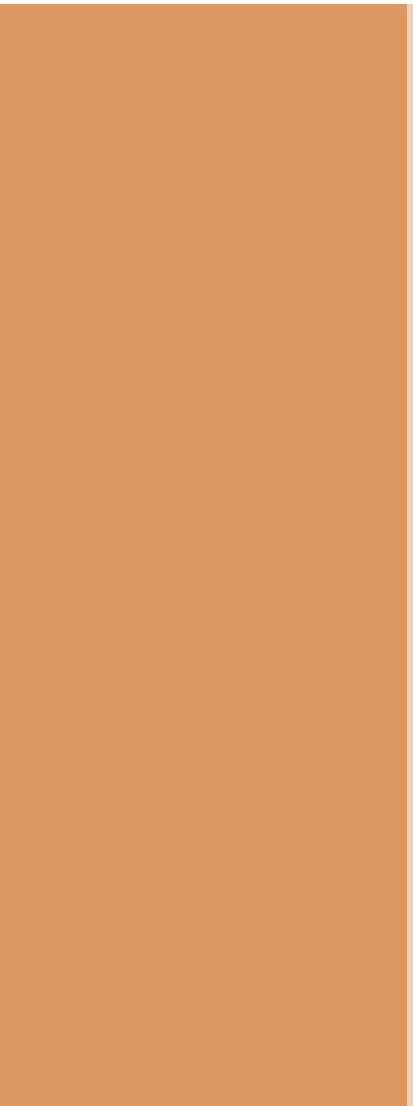
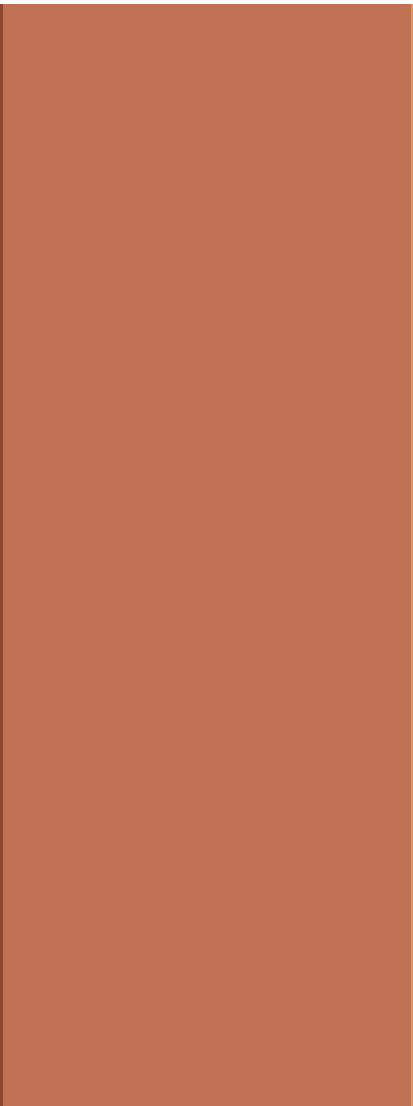
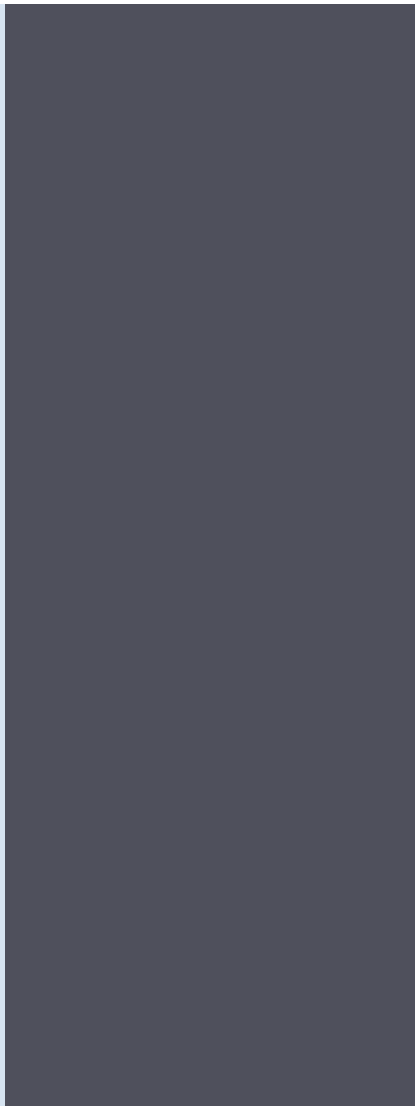
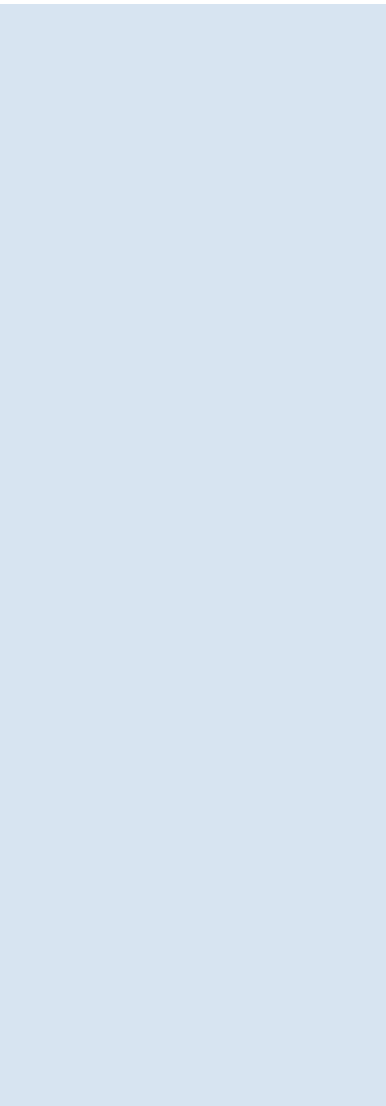


clinic and wellness center



the healing properties of color





courtyards



sustainable efforts



courtyards



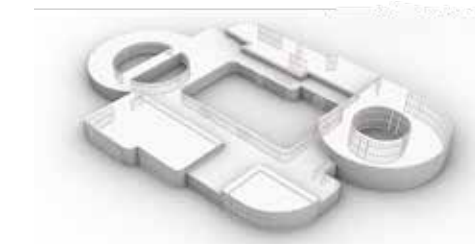
green roof system



solar panels



geothermal system



curtain wall system

the aging of corten



.5 mo



1.5 mo



6 mo



2 yr



5 yr



22 yr



40 yr



