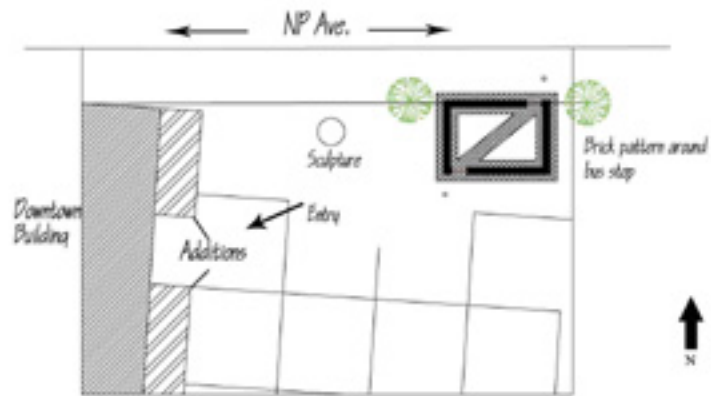


# From the old comes the **NEW**



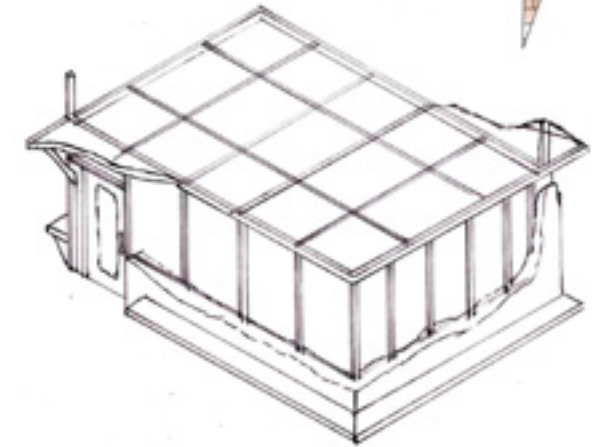
Sketch of the finished downtown project



Site Plan 1/16 = 1 Scale



Site is inbetween trees



Elev of Northeast corner  
1/4 = 1 Scale



The main idea behind the design of the bus stop is represented in this example. The bus stop is trying to achieve the look of a structure being erected from a former building once standing, made of a brick material.

