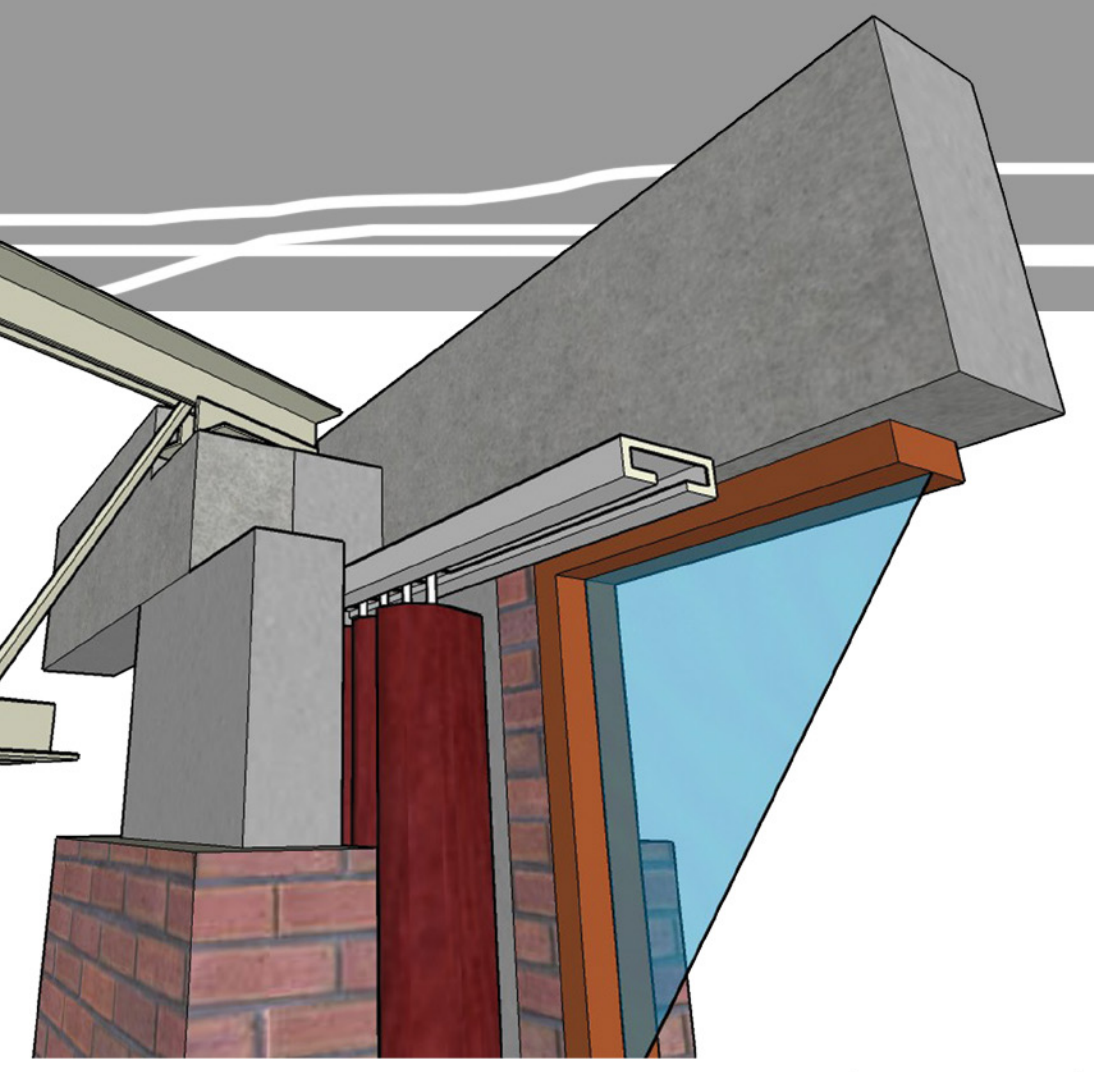


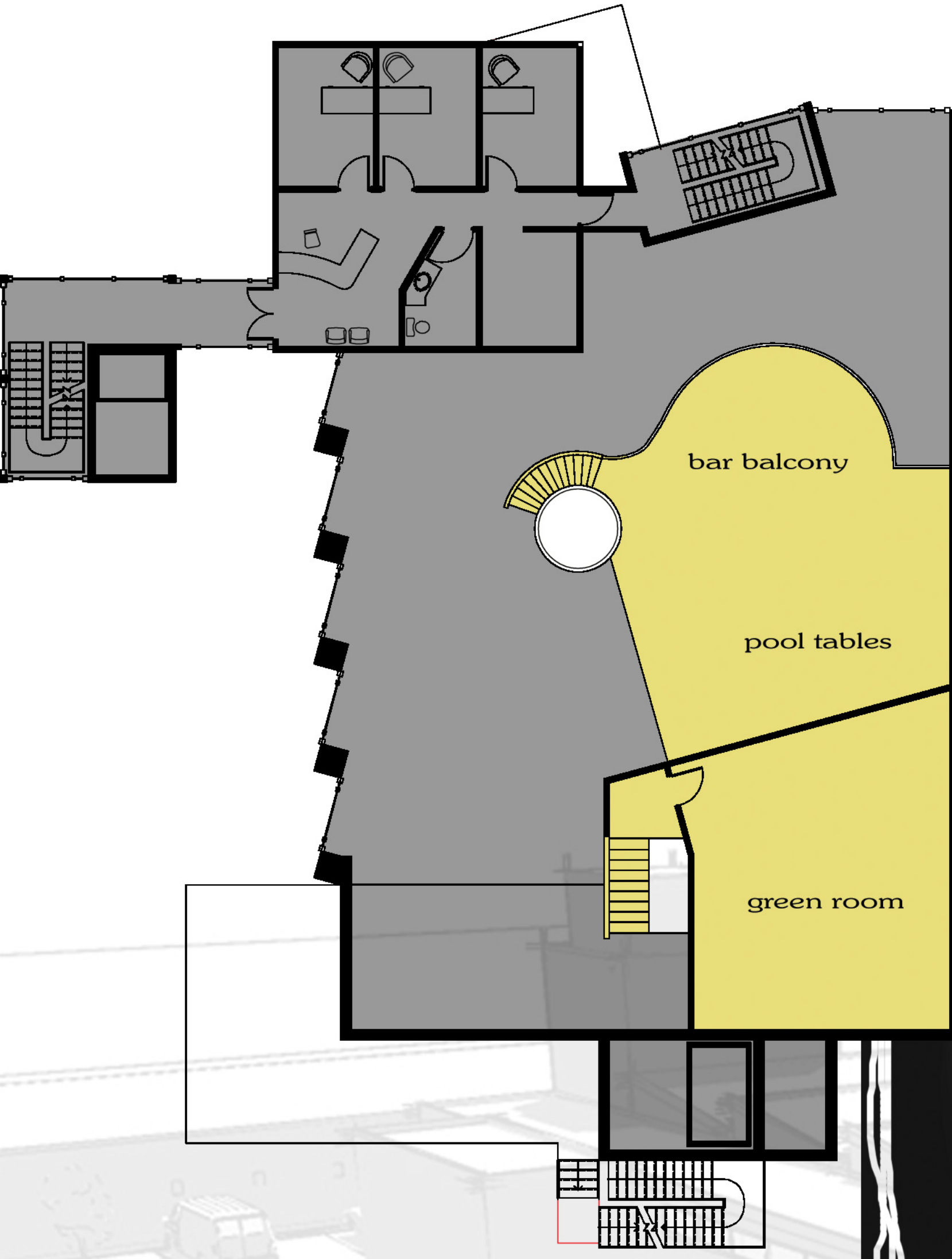
The 'Power Plant' bar offers seating that ranges from private couches to high tables right on the dance floor. There's also a loft that features two pool tables and an unobstructed view of the stage.



the power plant's bar

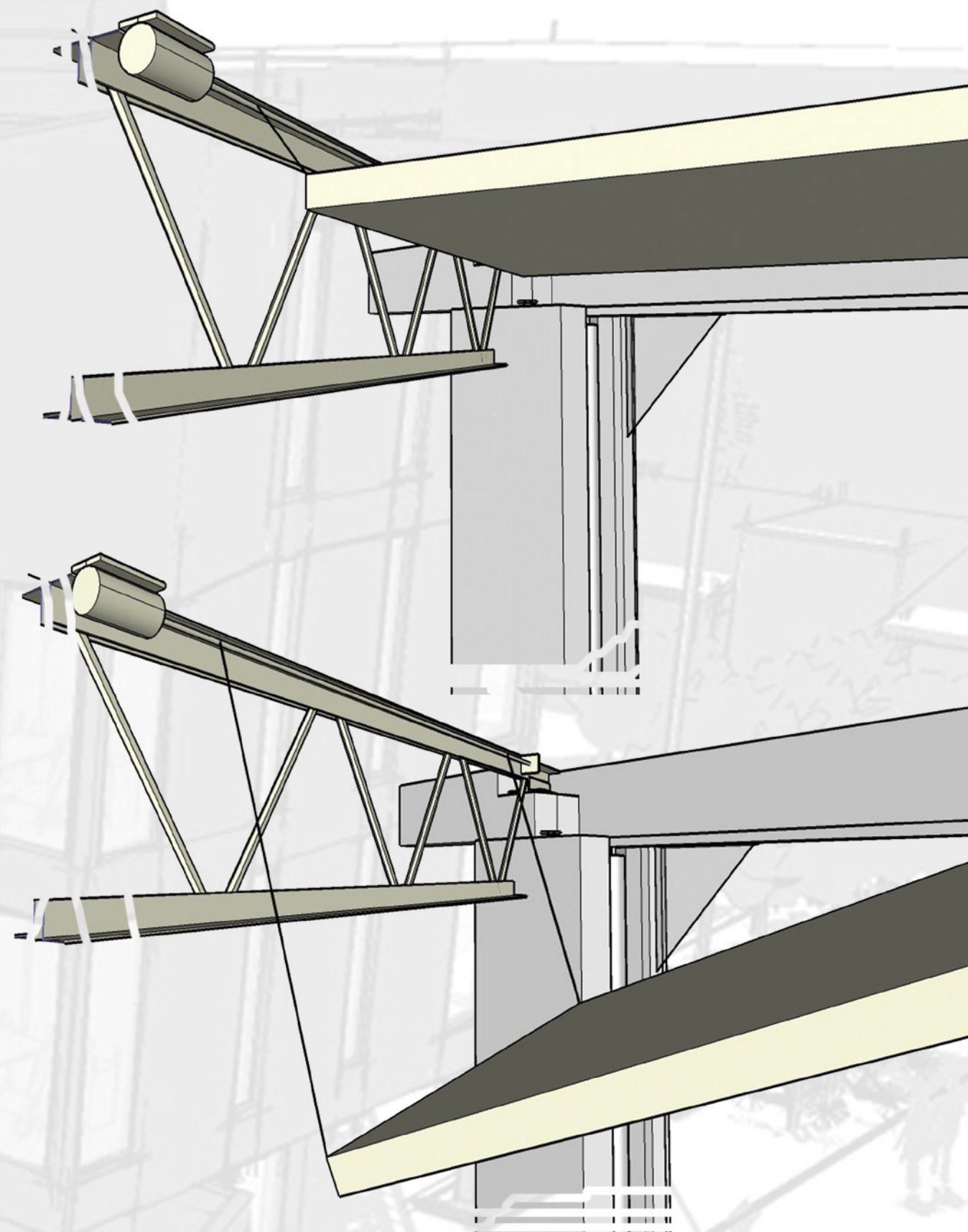


structure detail showing precast concrete beams, steel truss and acoustical curtain system which can be closed over the curtain wall for sound dampening



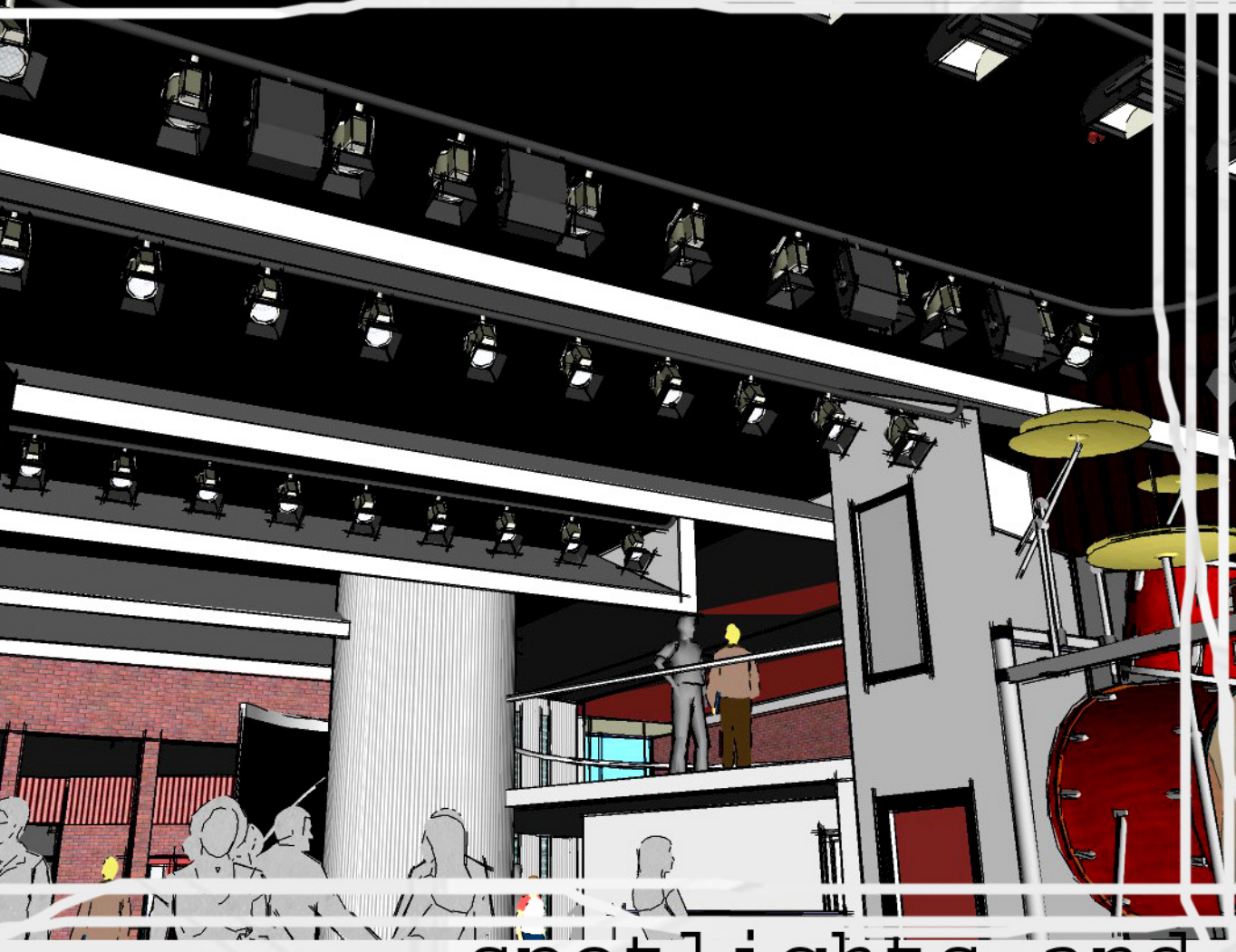
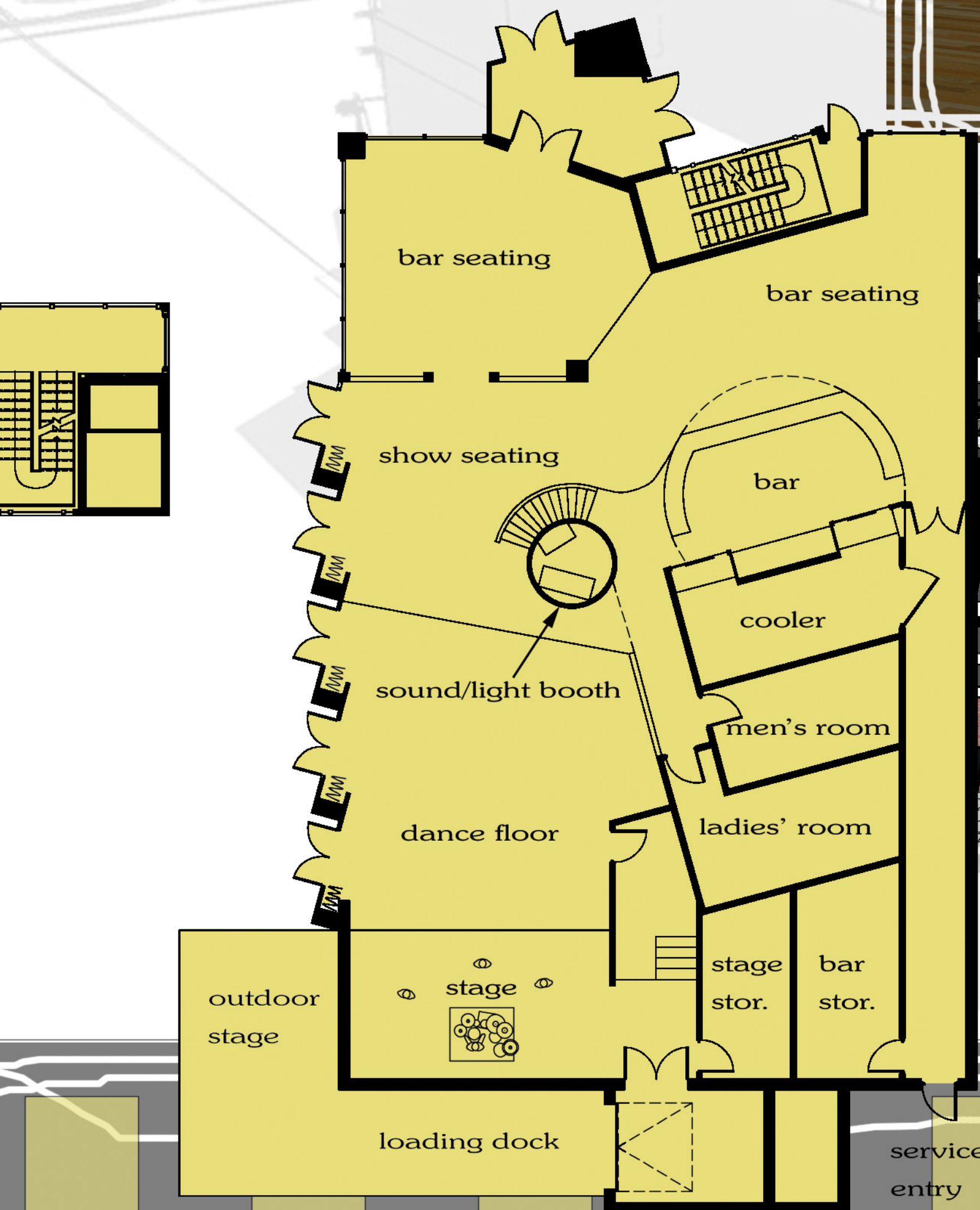
entry vestibule

detail illustrating the adjustable ceiling system. The ceiling can be raised to reverberate sound or lowered to absorb it.



stage with show lighting

The stage area is equipped with a solid sound system and a comprehensive lighting package. Both are controlled from the control "silo" near the bar. The sound system in the club can be patched into the studio below making live recordings easy to create.

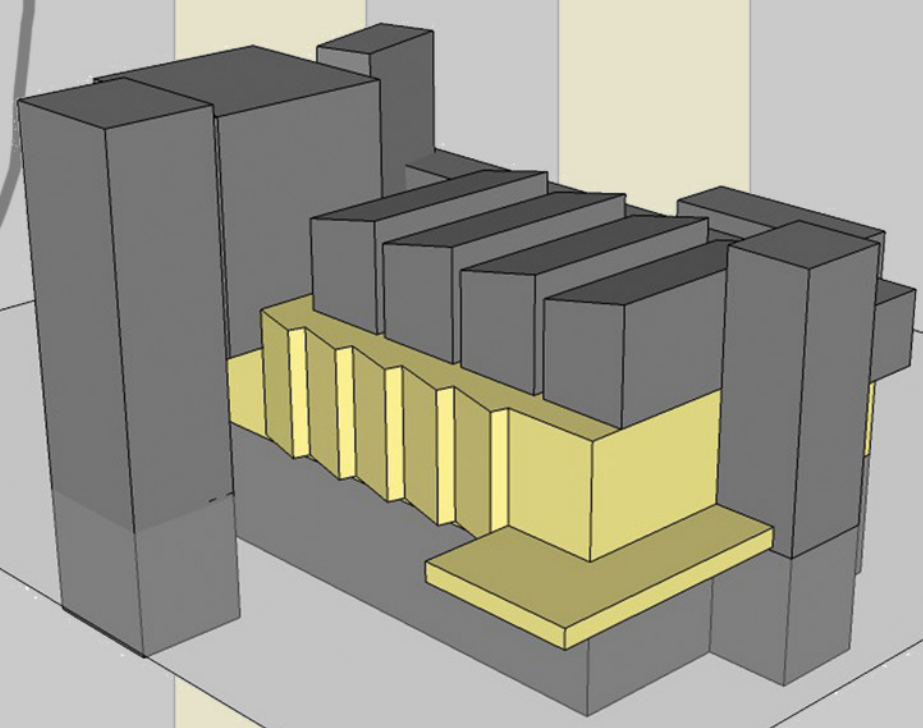


spotlights and ceiling system

rhythm:

movement or variation characterized by the regular recurrence or alternation of different quantities or conditions

architectural rhythms are created by repeating an idea regularly



the bar

